



KANSAS

#KUsoccer

f /KANSASSOCCER

t /KUWSOCCER

i /KANSASSOCCER

OCT. 5, 2018 | KANSAS STATE | GAME NOTES

KANSAS COMMUNICATIONS

JAYHAWKS

8-2-2 OVERALL

United Soccer rank: **RV**

Head Coach: Mark Francis

2-1-0

RPI rank: **25**

Record: 215-159-33 (20th year)



-vs-



4-6-2 OVERALL

United Soccer rank: **NR**

Head Coach: Mike Dibbini

0-3-0

RPI rank: **114**

Record: 14-26-6 (3rd year)

WILDCATS

SERIES AT A GLANCE

OVERALL	KSU LEADS, 1-0-0
in Manhattan	First Meeting
Last Meeting	KSU, 1-0 @ KU (10.6.17)



8-2-2	W-L-D	4-6-2
25	RPI RANK	114
1.50	GOALS PER GAME	1.00
15.6	SHOTS PER GAME	15.6
.096	SHOT PERCENTAGE	.064
.364	SHOT ON GOAL PERCENTAGE	.471
0.83	GOALS ALLOWED PER GAME	1.17
2.0	SAVES PER GAME	5.1
.706	SAVE PERCENTAGE	.813
0-0	PENALTIES	0-2
9.9	FOULS PER GAME	11.0
4-0	YELLOW - RED CARDS	6-0

GAME

13

KANSAS AT KANSAS STATE

Dillons Sunflower Showdown
Manhattan, Kansas • K-State Soccer Complex (1,100)
Friday, October 5, 2018 • 7 p.m. CST



Play-by-Play: Brian Smoller
Analyst: Oscar Montenegro
Reporter: Bridget Howard



Radio: IMG Jayhawk Radio Network
Webcast: KUathletics.com/Radio
Play-by-Play: Nick Springer

STARTERS

- The second soccer edition of the Dillons Sunflower Showdown is on tap for Friday, Oct. 5 as in-state rivals Kansas and Kansas State meet in Manhattan. The Jayhawks and Wildcats will kick off from K-State Soccer Complex at 7 p.m. on ESPN3.
- Kansas was slotted at No. 25 in this week's Rating Percentage Index (RPI) released by the NCAA this week. The Jayhawks join a strong showing by the Big 12, which is the nation's No. 2 RPI conference and features six squads inside the top-25.
- Nine of the Jayhawks' 18 goals scored this season have come in the 60th minute or later. That number includes six goals Kansas has tallied in the final 10 minutes of regulation or in overtime.
- Over the first half of her junior year forward Katie McClure has notched six goals and three assists, and has already twice been named the Big 12's Offensive Player of the Week. Her 15 points are tied for second in the league.
- Goalkeeper Sarah Peters' six shutouts are the most ever by a Jayhawk freshman goalkeeper in a single season. The program record for single-season shutouts belongs to Meghan Miller, who tallied 11 clean sheets during her senior season in 2004.
- Kansas is currently navigating through the 54th-toughest schedule in the NCAA. The Jayhawks have played or will play 11 teams that are ranked 56th or better in this week's RPI.
- The KU defense has amassed a goals-against average of 0.78 after its first 12 outings, a number that ranks the Jayhawks fifth in the Big 12 and 47th in the NCAA.
- Staying on defense, the KU back line has held its first 12 opponents to an average of 7.1 shots per game, which includes seven matches when the Jayhawks conceded seven or fewer shots.
- Head coach Mark Francis is just two victories shy from claiming No. 250 in his collegiate head coaching career. Francis boasts a career record of 248-184-34 in 23 seasons at the NCAA DI level, with 215 of his wins coming at KU.

2018 SCHEDULE

	#18 PEPPERDINE Aug. 17 Lawrence, Kan. 7 p.m.	W, 1-0
	SOUTH DAKOTA STATE Aug. 19 Lawrence, Kan. 12 p.m.	W, 3-0
	vs. Oregon State Aug. 24 Lincoln, Neb. 4 p.m.	W, 3-0
	vs. Oregon Aug. 26 Lincoln, Neb. 10 a.m.	T, 1-1 ^{20T}
	UTAH Aug. 31 Lawrence, Kan. 7 p.m.	W, 2-1 ^{20T}
	#25 BUTLER Sept. 2 Lawrence, Kan. 7 p.m.	W, 1-0
	at Cincinnati Sept. 6 Cincinnati, Ohio 6 p.m. (CT)	T, 0-0 ^{20T}
	SAINT LOUIS Sept. 14 Lawrence, Kan. 7 p.m.	W, 3-2
	at #4 Texas A&M Sept. 16 College Station, Texas 1 p.m.	L, 0-3
	OKLAHOMA Sept. 21 Lawrence, Kan. 7 p.m.	W, 2-1 ^{20T}
	#15 OKLAHOMA STATE Sept. 23 Lawrence, Kan. 1 p.m.	L, 1-2
	IOWA STATE Sept. 29 Lawrence, Kan. 7 p.m.	W, 1-0
	at Kansas State Oct. 5 Lawrence, Kan. 7 p.m. ESPN3	
	TCU Oct. 12 Lawrence, Kan. 7 p.m. ESPN+	
	TEXAS TECH Oct. 14 Lawrence, Kan. 1 p.m. ESPN+	
	at Texas Oct. 19 Austin, Texas 7 p.m. Longhorn Network	
	at Baylor Oct. 21 Waco, Texas 2 p.m. ESPN	
	at West Virginia Oct. 25 Morgantown, W.Va. 6 p.m. (CT)	
	Big 12 Championship Oct. 28 - Nov. 4 Kansas City, Mo.	

LAST MATCH STARTERS



COMMUNICATIONS

BRAD GILBERT
Assistant Communications Director
email: brgilbert@ku.edu
phone: 785.424.4008

NUMERICAL ROSTER

NO.	NAME	POS.	HT.	YR.	HOMETOWN (PREVIOUS SCHOOL)
0	Lauren Breshears	.GK	5-8	Sr.	St. Peters, Mo. (Fort Zumwalt South HS)
00	Sarah Peters	.GK	5-10	Fr.	Lee's Summit, Mo. (Lee's Summit North HS)
1	Regan Gibbs	.GK	5-9	Jr.	Naches, Wash. (West Valley HS)
2	Kaycie Young	.M.	5-7	TR-Sr.	Castle Rock, Colo. (Rock Canyon HS/Portland)
3	Maya Swaby-Wallerson	.D	5-7	Fr.	Hamilton, Ont. (Bishop Ryan Secondary)
4	Kailey Lane	.F	5-9	RS-Fr.	Omaha, Neb. (Millard North HS)
5	Olivia Pesek	.M/F	5-5	So.	Omaha, Neb. (Millard West HS)
6	Kaela Hansen	.D/M	5-7	Fr.	Burnaby, B.C. (Burnaby Central Secondary)
7	Avery Hall	.D	5-5	So.	McKinney, Texas (McKinney Boyd HS)
8	Anna Courtney	.M.	5-4	RS-Jr.	Parkville, Mo. (Park Hill South HS)
9	Madison Meador	.D/M	5-7	Jr.	Ballwin, Mo. (Marquette HS/Ole Miss)
10	Miriam Melugin	.M.	5-8	RS-Sr.	Springfield, Mo. (Kickapoo HS)
11	Chais Wright	.D	5-4	Fr.	Kansas City, Mo. (Park Hill HS)
12	Katie McClure	.F	5-4	Jr.	Wichita, Kan. (Maize HS)
13	Kathryn Castro	.M.	5-3	So.	Plano, Texas (Plano West Senior High)
14	Samantha Barnett	.F	5-8	Fr.	Edmond, Okla. (Edmond Memorial HS)
15	Ceri Holland	.M.	5-5	So.	West Yorkshire, England (South Craven School)
16	Italia Bradley	.D	5-7	Fr.	Coppell, Texas (Coppell HS)
17	Taylor Christie	.F	5-6	Jr.	Overland Park, Kan. (Shawnee Mission South HS)
18	Emilie Gavillet	.GK	5-9	Fr.	Montreux, Switzerland (Wilhelm Hausenstein Gymnasium)
19	Eva Elíasdóttir	.D	5-9	Jr.	Thorlakshofn, Iceland (Fjölbautaskóli Suðurlands)
20	Avery Ripple	.M.	5-3	Fr.	Papillion, Neb. (Papillion La-Vista South HS)
21	Isabella Cavalcante	.D	5-7	So.	Glen Ellyn, Ill. (Glenbard West HS)
22	Mandi Duggan	.F	5-2	RS-So.	Aurora, Colo. (Grandview HS)
23	Grace Wiltgen	.D/F	5-6	Fr.	Denton, Texas (Denton HS)
24	Elise Reina	.D	5-2	Jr.	Fayetteville, Ark. (Har-Ber HS)
25	Grace Hagan	.F	5-10	Sr.	Wichita, Kan. (Kapaun Mt. Carmel Catholic HS)
26	Addisyn Merrick	.D	5-6	Jr.	Lee's Summit, Mo. (Lee's Summit North HS)
27	Sophie Maierhofer	.M.	5-7	Jr.	Graz, Austria (University of Bremen)
28	Bri Amos	.D/M	5-7	Fr.	Tulsa, Okla. (Union HS)

STAFF

NAME	POSITION // YEAR AT KU	ALMA MATER // YEAR
Mark Francis	Head Coach // 20th	SMU // 1987
Kelly Miller	Assoc. Head Coach // 20th	Copper Union // 1996
Bri Young	Assistant Coach // 3rd	Texas A&M // 2011
Derek Shoare	Volunteer Asst. Coach // 4th	St. Mary's (London) // 1980
Maddie Dobyns	Dir. of Operations // 1st	Kansas // 2015
John Zirkelbach	Athletic Trainer // 16th	Iowa State // 1999
Ali Kershner	Strength and Cond. // 4th	Duke // 2012

PRONUNCIATION GUIDE

Isabella CAVALCANTE	kav-uhl-KAHN-tay
Mandi DUGGAN	DEW-guhn
Eva ELIASDÓTTIR	ell-EYE-iss-daw-ter
Emilie GAVILLET	GAH-vee-ay
Grace HAGAN	HAY-gen
CERI Holland	CARE-ee
Madison MEADOR	MEH-der
Sophie MAIERHOFER	MY-er-ha-fur
Miriam MELUGIN	Mel-OO-jin
Olivia PESEK	PEH-shik
Maya SWABY-Wallerson	SWAY-bee
Grace WILTGEN	WILL-chen
CHAIS Wright	CHASE

RADIO/TV ROSTER

 0 LAUREN BRESHEARS Sr. // GK // 5-8 St. Peters, Mo.	 00 SARAH PETERS Fr. // GK // 5-10 Lee's Summit, Mo.	 1 REGAN GIBBS Jr. // GK // 5-9 Naches, Wash.	 2 KAYCIE YOUNG TR-Sr. // M // 5-7 Castle Rock, Colo.	 3 MAYA SWABY-WALLERSON Fr. // D // 5-7 Hamilton, Ont.	 4 KAILEY LANE RS-Fr. // F // 5-9 Omaha, Neb.	 5 OLIVIA PESEK So. // M/F // 5-5 Omaha, Neb.	 6 KAELA HANSEN Fr. // D/M // 5-7 Burnaby, B.C.	 7 AVERY HALL So. // D // 5-5 McKinney, Texas	 8 ANNA COURTNEY RS-Jr. // M // 5-4 Parkville, Mo.
 9 MADISON MEADOR Jr. // D/M // 5-7 Ballwin, Mo.	 10 MIRIAM MELUGIN RS-Sr. // M // 5-8 Springfield, Mo.	 11 CHAIS WRIGHT Fr. // D // 5-4 Kansas City, Mo.	 12 KATIE MCCLURE Jr. // F // 5-4 Wichita, Kan.	 13 KATHRYN CASTRO So. // M // 5-3 Plano, Texas	 14 SAMANTHA BARNETT Fr. // F // 5-8 Edmond, Okla.	 15 CERI HOLLAND So. // M // 5-5 West Yorkshire, England	 16 ITALIA BRADLEY Fr. // D // 5-7 Coppell, Texas	 17 TAYLOR CHRISTIE Jr. // F // 5-6 Overland Park, Kan.	 18 EMILIE GAVILLET Fr. // GK // 5-9 Montreux, Switzerland
 19 EVA ELIASDÓTTIR Jr. // D // 5-9 Thorlakshofn, Iceland	 20 AVERY RIPPLE Fr. // M // 5-3 Papillion, Neb.	 21 ISABELLA CAVALCANTE So. // D // 5-7 Glen Ellyn, Ill.	 22 MANDI DUGGAN RS-So. // F // 5-2 Aurora, Colo.	 23 GRACE WILTGEN Fr. // D/F // 5-6 Denton, Texas	 24 ELISE REINA Jr. // D // 5-2 Fayetteville, Ark.	 25 GRACE HAGAN Sr. // F // 5-10 Wichita, Kan.	 26 ADDISYN MERRICK Jr. // D // 5-6 Lee's Summit, Mo.	 27 SOPHIE MAIERHOFER Jr. // M // 5-7 Graz, Austria	 28 BRI AMOS Fr. // D/M // 5-7 Tulsa, Okla.

KANSAS STATE WILDCATS

NO.	NAME	POS.	HT.	HOMETOWN / PREVIOUS SCHOOL
00	Angie Ojeda	.GK	.5-8	Dodge City, Kan. / Dodge City HS
1	Olivia Elofsson	.GK	.5-10	Loeddekoepinge, Sweden / Malmoe Idrottsgymnasium
2	Rylie Albers	.D	.5-6	Omaha, Neb. / Elkhorn South HS
3	Haley Sutter	.D	.5-6	Overland Park, Kan. / Blue Valley Northwest HS
4	Taylor Gardner	.D	.5-7	Lee's Summit, Mo. / Blue Springs South HS
5	Krista Haddock	.F	.5-2	Hemet, Calif. / Hemet HS
6	Morgan Egan	.D	.5-4	Naperville, Ill. / Neuqua Valley HS
8	Brookelynn Entz	.M	.5-4	Newton, Kan. / Newton HS
9	Megan Kalkofen	.D	.5-9	Wheaton, Ill. / Neuqua Valley HS
10	Chloe Fisher	.F	.5-9	Warrington, Chesire, England / Cronton Sixth Form College
12	Riley Dietrich	.M	.5-8	Fort Collins, Colo. / Fort Collins HS
13	Bailey Nemechek	.M	.5-7	Fort Collins, Colo. / Fort Collins HS
14	Ashley Zane	.M	.5-7	Wichita, Kan. / Maize HS
15	Emma Malsy	.GK	.5-11	Westminster, Calif. / Ocean View HS
17	Grace Brennan	.D	.5-8	Edmond, Okla. / Edmond North HS
18	Emily Crain	.D	.5-8	Temecula, Calif. / Chaparral HS
19	Christina Baxter	.M	.5-4	Papillion, Neb. / Bellevue West HS
20	Katie Cramer	.F	.5-6	Goddard, Kan. / Wichita Northwest HS
21	Shelby Lierz	.D	.5-8	Overland Park, Kan. / Blue Valley West HS
22	Hannah Davis	.F	.5-2	Lincoln, Neb. / Lincoln Southwest HS
23	Laramie Hall	.M	.5-3	Oklahoma City, Okla. / Edmond Memorial HS
24	Maguire Sullivan	.D	.5-5	Andale, Kan. / Bishop Carroll HS
25	Mikayla Edwards	.D	.5-8	Huntington Beach, Calif. / Edison HS
26	Aly Rocha	.D	.5-4	Huntington Beach, Calif. / Mater Dei HS
27	Nora Faines	.D/M	.5-6	Stavanger, Norway / Wang Toppidrett
28	Leah Kellogg	.M	.5-8	Los Alamitos, Calif. / Los Alamitos HS
29	Morgan Mauck	.M	.5-8	Overland Park, Kan. / Shawnee Mission West HS
30	Brooke Ramos	.F	.5-3	Waipahu, Hawaii / Kamehameha Schools-Kapalama
31	Avery Green	.D	.5-7	Wichita, Kan. / Maize South HS
36	Maddie Souder	.M	.5-6	Lee's Summit, Mo. / Lee's Summit HS
44	Tatum Wagner	.F	.5-7	Tulsa, Okla. / Bixby HS

Head Coach: Mike Dibbini (Kansas Wesleyan '99 - 3rd Season)

Associate Head Coach: Jessica Smith (Kansas '06 - 3rd Season)

Assistant Coach: Gabe Romo (Kansas Wesleyan '09 - 3rd Season)

ABOUT THE SERIES

RECORD

Kansas State leads, 1-0-0

OVERVIEW

The in-state rivals will meet for just the second time ever Friday night and the first time in Manhattan. The two schools began the soccer portion of the Dillons Sunflower Showdown in 2017, a 1-0 KSU win in Lawrence, after the Wildcats began the program in 2016.

COACHES

Kansas coach Mark Francis is in his 20th season at KU with a 215-159-33 record and is 248-184-34 in his 23rd season overall. Kansas State head coach Mike Dibbini is in his third campaign at the helm of the Wildcats. Dibbini has a 14-26-6 record during his time in Manhattan.

POLLS

Neither Kansas or Kansas State find themselves ranked in this week's national polls, however the Jayhawks are receiving votes in the United Soccer Coaches' poll.

ABOUT THE JAYHAWKS

Kansas, receiving votes in the latest United Soccer Coaches' poll, is coming off a 1-0 home win over Iowa State on Sept. 29. The Jayhawks began the season going unbeaten in their first eight outings, but have tallied just three victories in their six most recent matches, but with losses to a pair of teams currently ranked in the top-13 of the national rankings.

The Jayhawk offense has enjoyed a solid to 2018 thus far, averaging over 15 shots in its first 12 matches, and averaging nearly six of those shots on target per match. Seven different Jayhawks have tallied double-digit shots this season and 11 different players have posted a goal or an assist. KU forwards Katie McClure and Grace Hagan have combined for 10 of the Jayhawks' 18 goals, netting six and four, respectively.

The KU defense got out to an impressive start to the season, allowing just two goals in its first seven matches and notching five shutouts. However in their next five contests, the Jayhawks have conceded eight goals and have tallied one clean sheet. KU is holding opponents to 7.1 shots per match and less than three shots on goal per match. Freshman Sarah Peters was the starting keeper in all 12 contests, keeping a clean sheet in six of those appearances and has collected 23 saves for a .697 save percentage.

LAST TIME OUT

Another goal in the waning moments of the match lifted the Kansas Jayhawks to a 1-0 victory over the Iowa State Cyclones Sept. 29 inside Rock Chalk Park. Sophomore midfielder Ceri Holland netted the first of the year in the 82nd minute to hand her team its eighth win of the year.

The first 45 minutes of action were played a snail's pace, with neither squad managing much in the way of offense. The two teams combined for only six shots and nearly matched one another in every other statistical category. Kansas doubled up on Iowa State in the shots column in the first stanza, 4-2.

Kansas picked up the pace in the second half, doubling its first-half offensive output within the first 10 minutes after the restart. Kansas tallied 13 shots overall in the final 45 minutes and eight of those, came during the early minutes of the second frame.

As it appeared the Jayhawks were destined for their fifth overtime of the season, Holland saved the day with just eight minutes left in regulation. Senior forward Grace Hagan connected a pass to her sophomore teammate at the top of the Iowa State box, where she needed just one swift kick to send in her first goal of 2018 and the second of her Kansas career. The helper marked Hagan's second assist of her senior season and 14th of her three-plus years donning the Crimson and Blue.

2018 QUICK FACTS

GENERAL INFORMATION

Location	Lawrence, Kan.
Enrollment	28,401
Founded	1866
Nickname	Jayhawks
School Colors	Crimson and Blue (PMS: Blue 293; Crimson 186)
Conference	Big 12
Chancellor	Douglas A. Girod
Athletics Director	Jeff Long
Associate Athletics Director/Soccer Administrator	Jane Fulton
Athletics Website	www.kuathletics.com
Ticket Office Phone	1.800.34.HAWKS (42957)

SOCCER FACILITY

Home Facility (Capacity)	Rock Chalk Park (2,500)
KU Record at Rock Chalk Park	24-14-2 (.625)
Opened	2014
Surface	Natural Grass (Bermuda and Rye)

COACHING STAFF/SUPPORT STAFF

Head Coach	Mark Francis (SMU, 1987)
Record at Kansas	215-159-33 (20th season)
Overall	248-184-34 (23rd season)
Associate Head Coach	Kelly Miller (The Cooper Union, 1996)
Year at Kansas	20th
Assistant Coach	Bri Young (Texas A&M, 2011)
Year at Kansas	Third
Volunteer Assistant	Derek Shoare
Year at Kansas	Fourth

2017 IN REVIEW

Overall Record	8-9-3 (.475)
Big 12 Record	3-5-1 (.389)
Big 12 Finish	6th
Home	4-5-0 (.444)
Away	4-4-2 (.500)
Neutral	0-0-1 (.500)

PROGRAM HISTORY

First Year of Soccer at Kansas	1995 (24th season)
All-Time Record	239-207-36 (.533)
All-Time Big 12 Record	89-105-17 (.462)
Conference Titles	1 (2004)
NCAA Postseason Appearances	7
(2001, 2003, 2004, 2008, 2011, 2014, 2016)	
NCAA Postseason Record	5-7-0 (.417)

2018 TEAM INFORMATION

Letterwinners Returning/Lost	17/6
Starters Returning/Lost	7/4
Newcomers	11

CARD ACCUMULATIONS

Player	Yellow	Red
Bri Amos	1	0
Ceri Holland	1	0
Katie McClure	1	0
Addisyn Merrick	1	0

Yellow Accumulation Rule: Any player(s) or coach(es) who have received a total of five cautions in one season shall be suspended and shall not participate in the next regularly scheduled game, including postseason games.

2018 UNITED SOCCER COACHES PRESEASON POLL

OCT. 2, 2018

Rank	Team	Previous	Record
1.	Stanford (34)	1.	.10-0-1
2.	Southern California (1)	2.	.9-1-1
3.	North Carolina	3.	.9-2-1
4.	Santa Clara	4.	.10-1-1
5.	Georgetown	7.	.10-0-2
6.	Texas A&M	5.	.11-1-1
7.	Washington State	9.	.10-0-0
8.	Virginia	6.	.9-2-0
9.	Tennessee	12.	.9-1-1
10.	Florida State	10.	.9-2-1
11.	Boston College	11.	.11-1-0
12.	South Carolina	14.	.9-2-0
13.	Texas	8.	.9-0-2
14.	Northwestern	17.	.8-2-2
15.	UCLA	16.	.6-3-1
16.	West Virginia	RV.	.7-2-3
17.	Duke	15.	.8-2-2
18.	Memphis	20.	.10-1-0
19.	Vanderbilt	25.	.11-1-0
20.	Colorado	18.	.9-0-3
21.	Oklahoma State	13.	.10-2-1
22.	Nebraska	RV.	.8-3-3
23.	North Carolina State	21.	.8-3-2
24.	Baylor	NR.	.9-4-0
25.	Mississippi State	RV.	.8-2-1

Others receiving votes: Princeton (43), South Florida (38), California-Riverside (31), North Texas (29), Rutgers (28), Wisconsin (26), Auburn (18), Arizona (11), Penn State (10), Louisville (9), Virginia Tech (9), BYU (5), **KANSAS (4)**, Oregon (4), Wake Forest (3)

Kansas 2018 opponents are in italics

ABOUT THE WILDCATS

Located in Manhattan, Kansas with an enrollment of 22,795, Kansas State enters Friday's match with a 4-6-2 record in its third season as a program. K-State returned 16 letterwinners and 10 starters from 2017, which saw the Wildcats finish with a record of 6-11-1.

The KSU offense has been up and down in 2018, scoring multiple goals in three of its contests, however also enduring six shutouts. K-State is posting 15.6 shots per game and is scoring on just over six percent of those attempts. The Wildcats have also managed to put 47 percent of those 15.6 shots per game on target. Junior Katie Cramer and sophomore Brookelynn Entz lead the team with two goals on the year and are joined by eight of their teammates who have notched at least one goal in 2018.

The Kansas State defense has conceded 14 goals this season, however eight of those have come in the last three contests. Wildcat opponents are averaging nearly 16 shots per match and are putting 40 percent of those attempts on frame. Sophomore goalkeeper Emma Malsy has played all but 20 minutes this season in goal for KSU. In her 12 outings she has collected 59 saves and has amassed a goals-against average of 1.06.

Mike Dibbini enters his third official season at the helm of K-State women's soccer in the 2018 season after being hired in December of 2014 as Kansas State's first women's soccer coach. He has led the Wildcats to a 14-26-6 record.

NO GAMES OFF

Before Kansas soccer even hit the pitch for its first match of the season, the Jayhawks knew they would be in for a gauntlet of a schedule. The 2018 schedule, which is currently sits as the 54th-toughest in all of NCAA DI, features eight teams that competed in the NCAA Tournament a year ago as well as four reigning conference champions. The Jayhawks, sitting at 8-2-2 after their first 12 games of the season, have played or will play six teams that are ranked or receiving votes in the most recent United Soccer Coaches' top-25 poll. That number includes three squads inside the top-16.

The Jayhawks have already played four top-25 teams over the first six weeks of the season, which included two wins over ranked squads (No. 18 Pepperdine and No. 25 Butler). It appears as though KU will face several more battles with top-25 teams this season with the bulk of Big 12 Conference play still to come. The conference currently features five teams that are ranked or receiving votes in the Coaches' poll and that includes No. 13 Texas, No. 16 West Virginia, No. 21 Oklahoma State and No. 24 Baylor. The Big 12's winning percentage, 64.1 percent, after the first seven weeks of the season ranks fourth out of the 31 DI conferences.

SPREADING THE WEALTH

The Kansas offense has shown to be a tough assignment for opposing defenses this year after a host of Jayhawks have made their presence known on the stat sheet. Eleven different Jayhawks have had their hand in at least one of the team's goals thus far in 2018, either scoring or assisting. A total of seven players have managed to tally double-digit shots which includes four players who have posted 22 or more attempts.

This is a trend that has been carried over from last year's squad which was also an unselfish bunch, as eight different players managed to post double-figure shots and 13 Jayhawks tallied at least one goal or assist in 2017.

LATE MATCH MAGIC

The Jayhawks have been clutch in crunch time during the first half of the 2018 campaign. Nine of the Jayhawks' 18 goals scored thus far have come in the 60th minute or later. That number includes six goals Kansas has tallied in the final 10 minutes of regulation or in overtime.

The Jayhawks have come out on top in four of those matches that have seen Kansas score in the 80th minute or later. KU has netted a pair of golden goals already in 2018, both off the boot of junior forward Katie McClure. McClure scored overtime game-winners against Utah (8/31) and Oklahoma (9/21), which are included in her four game-winners this season. Those four game-winning strikes rank her first among Big 12 players and are fifth-most by a Jayhawk in school history.

McClure's two golden goals have given Kansas two victories that have come by way of an overtime this season, which marks the first time the Jayhawks have tallied multiple OT wins in a season since 2015. That 2015 squad holds the program record for overtime wins in a season with three.

MEDIA INFORMATION

WEEKLY PRESS RELEASE

Each Wednesday a complete release previewing the upcoming weekend's games and reviewing the season will be available on KUathletics.com. The release will also be emailed to media requesting this service each Wednesday.

INTERVIEWS

Contact the communications office for all player or coach interview requests. All interviews with players and coaches will take place after practice on Mondays and Wednesdays. To request players media should contact Brad Gilbert, Assistant Communications Director, by noon each day preceding interviews at brgilbert@ku.edu or (785) 864-7788. Out-of-town media wishing to interview Kansas players should also contact the communications office with their requests by noon the day prior to the interview.

Home and cell phone numbers for players will not be provided and players have been instructed not to accept calls from media without prior notice from the communications office. Please do not contact a player or coach without scheduling the interview through the communications office.

COVERING HOME GAMES

CREDENTIALS

All credential requests can be made by contacting the communications office or soccer contact Brad Gilbert (brgilbert@ku.edu). Credentials will be available for pickup at the KU communications office or in the ticket office at Rock Chalk Park on game days. Credentials will only be granted to members of legitimate media entities.

GETTING TO ROCK CHALK PARK

From Kansas City (Kansas City International Airport), Take I-29 North to I-435 South toward Topeka. Merge onto I-70 West to Topeka. Use exit 197 (west exit) in Lawrence and drive south on KS-10 E to W 6th Street. Take a left (east) on 6th Street followed by another left (north) on George Williams Way. The Rock Chalk Park parking lot will then be on the left.

WIRELESS INTERNET

Complimentary access to wireless internet is available at Rock Chalk Park and information about how to access it will be available in the pressbox.

INJURY INFORMATION

The University of Kansas Athletics department will abide by HIPAA - a federal privacy act policy - with regard to the release of injury information.

TOP DRAWER SOCCER PRESEASON POLL

OCT. 1, 2018

Rank	Team	Record	Conf.
1.	Stanford	10-0-1	.3-0-0
2.	North Carolina	9-2-1	.4-0-0
3.	USC	9-1-1	.2-1-0
4.	Texas A&M	11-1-1	.2-1-1
5.	Washington State	10-0-0	.3-0-0
6.	Santa Clara	10-1-1	.1-0-0
7.	Georgetown	10-0-2	.3-0-0
8.	Virginia	9-2-0	.2-2-0
9.	South Carolina	9-2-0	.3-1-0
10.	Tennessee	9-1-1	.3-1-0
11.	Texas	9-1-2	.1-1-1
12.	Florida State	9-2-1	.2-2-0
13.	UCLA	6-3-1	.1-2-0
14.	Duke	8-2-2	.2-1-1
15.	Vanderbilt	11-1-0	.4-0-0
16.	Boston College	11-1-0	.3-1-0
17.	Colorado	9-0-3	.1-0-2
18.	Mississippi State	8-2-1	.1-2-1
19.	Princeton	6-2-2	.1-0-1
20.	Arizona	8-2-1	.1-1-1
21.	Nebraska	8-3-3	.4-0-2
22.	Auburn	9-2-1	.1-2-1
23.	Oklahoma State	10-2-1	.2-1-1
24.	Memphis	10-1-0	.2-0-0
25.	South Florida	6-2-0	.1-1-0

Others receiving votes: KANSAS (8-2-2), NC State (8-3-2), Louisville (9-2-0), Arkansas (8-2-2), Butler (9-3-0)

Kansas 2018 opponents are in italics

THIS AND THAT

AFTER KU's victory over No. 25 Butler on Sept. 2, the Jayhawks have now notched five victories over top-25 teams at Rock Chalk Park since 2016. This includes a pair of wins over top-10 squads, both coming last season in victories over No. 7 USC and No. 9 Texas.

FOUR reigning conference champions, eight 2017 NCAA Tournament participants and 10 teams coming off seasons with 12 or more wins is just a taste of what the 2018 Kansas soccer team have faced and will face in its fall schedule.

KANSAS has been a pretty formidable foe in matches when it is coming off a loss over the last few seasons. Since the start of the 2016 season, the Jayhawks are 8-3-4 in those contests that follow a loss, which includes a 2-0 record this season.

ROCK Chalk Park has been a tough venue for KU opponents over the last four-plus years. The Jayhawks are 29-13-2 in their last 44 regular-season outings on their home pitch. In that span, KU had a goal differential of +25 and boasted a goals-against average of 0.88.

DATING back to the start of the 2016 season, Grace Hagan and Katie McClure have been involved (scoring or assisting) in 48 of the Jayhawks' 69 goals scored in that span, which includes 14 of KU's 18 goals this season.

THE shutout at the hands of Cincinnati on Sept. 6 ended a seven-game-stretch that saw Kansas score at least once in each of those games. Last season, KU put together a nine-game streak of scoring a goal and has not been shutout in back-to-back games since 2015.

FRANCIS APPROACHING 250 COLLEGIATE WINS

With Kansas' 1-0 win over Iowa State on Sept. 29, Mark Francis claimed his 248th victory as the head coach at the NCAA DI level. He has now amassed a record of 248-184-34 over his 23 years as a collegiate coach. The veteran coach has averaged nearly 11 wins per season during his first 22 years on the sideline. He is currently second among the active Big 12 coaches in career victories behind West Virginia's Nikki Izzo-Brown.

RPI REVIEW

With the release of the season's third Ratings Percentage Index (RPI) report by the NCAA this week, several good signs stick out for the Jayhawks. Kansas checked in at No. 25 on the list that takes numerous factors into account including strength of schedule, record against top-50 teams and home versus road record. The ranking marked the third-straight week the Jayhawks found themselves in the top-25 after being slotted at No. 17 last week.

This week's report shows that the Big 12 is one of the nation's toughest conference. The league was listed as the nation's No. 2 conference with this week's RPI boasting six of its 10 teams inside the top-25. The conference's high ranking also means the Jayhawks will get plenty of chances to up their national standing as four of their final five regular-season contests will be against teams currently ranked inside the top-70 of the RPI.

ROAD WARRIORS

With four of their final six regular-season matches on the road, the Jayhawks will look to continue their trend of relatively strong performances in matches away from Rock Chalk Park in the recent years. Kansas can hang its hat on an impressive record in road games over the past four years. Including the Jayhawks' draw at Cincinnati on Sept. 6, KU has played 41 regular-season games away from Rock Chalk Park since the start of the 2014 season, amassing a record of 20-13-8, which included a 4-4-2 record last year. KU has posted a .500 record or better in regular-season road or neutral matches every year since 2014.

HOT START HAWKS

The impressive early performance in the 2018 campaign puts this year's Jayhawk squad among just a few other Kansas teams that have gotten their seasons off to a fast start. This bunch joined two other KU teams that suffered one or fewer losses over the first 10 games of the season (2014 and 2004).

The Jayhawks' early success bodes well for the bunch, as each of those past two KU teams went on to make the NCAA Tournament and posted 15 or more victories. Kansas logged top-three finishes in the final Big 12 standings in both of those years as well.

LET'S GET DEFENSIVE

In their first 12 matches of 2018, the Jayhawks have once again proven to be a stout defensive team, carrying over the trend from their last several seasons. Kansas currently boasts a goals-against average of 0.78 this year, which encompasses six shutouts in those 12 outings. The Jayhawks are allowing just over seven opponent shots per match, which includes seven games that they held their opponents to seven or fewer attempts.

KU has already put together an impressive shutout streak to start this season. Kansas went 354-straight minutes without conceding a goal over its first four matches. The figure is the eighth-longest shutout streak in program history and marked the fourth time over the last five seasons the Jayhawks have tallied an opponent scoreless streak of 300 minutes or longer.

FIRST TO SCORE, WINS GALORE

Dating back to the beginning of the 2012 season, now at 135 games, Kansas has developed an interesting trend when it comes to which team tallies the first goal of the match. During that 135-game span, the Jayhawks were on the losing end only twice in contests which they put in the match's first goal. Kansas has amassed a record of 61-2-8 in those games (91.5 winning %), which included a 6-1-2 mark last year and already a 5-0-1 mark in 2018. The Jayhawks' loss at BYU on Sept. 18 of 2017 was their first in 51 matches when they scored first.

On the flip side, KU wasn't quite as fortunate when its opponents have gotten on the board first. Kansas' win over Oklahoma on Sept. 21 marked just the eighth victory for the Jayhawks in that same 135-game span when finding itself trailing 1-0 at any point in a match. Kansas is now 8-48-4 in those games over the last five seasons, which included eight of KU's losses and a tie in 2017.

KANSAS IN THE BIG 12/NCAA

Big 12 Top-10 (10.1.18); NCAA Top-100 (10.1.18)



TEAM

W-L-T Percentage (.750, 8-2-2)	3	37
Points Per Game (4.3)	8	-
Goals Per Game (1.5)	8	-
Assists Per Game (1.3)	6	-
Shots Per Game (15.6)	5	70
Shots on Goal Per Game (5.7)	9	-
Corners Per Game (3.7)	9	-
Offsides Per Game (2.2)	1	-
Fouls Per Game (9.9)	6	-
Goals-Against Avg. (0.78)	5	47
Saves Per Game (2.0)	8	-
Save Percentage (.706)	10	-
Shutouts (6)	5	45

INDIVIDUAL (ALL GAMES)

TOTAL POINTS
Katie McClure (15) 2 89

POINTS PER GAME
Katie McClure (1.3) 2 107

TOTAL GOALS
Katie McClure (6) 2 79

GAME-WINNING GOALS
Katie McClure (4) 1 6

SHUTOUTS
Sarah Peters (6) 2 16

GOALS AGAINST AVERAGE
Sarah Peters (0.78) 6 55

GOALKEEPER MINUTES PLAYED
Sarah Peters (1155) 4 33

KU'S LONGEST OPPONENT SCORELESS STREAKS

Rnk	Year (Dates of Streak)	Length
1.	2001 (Oct. 21-Nov. 8)550 min.
2.	2004 (Aug. 28-Sept. 11)492 min.
3.	2017 (Aug. 18-Sept. 3)450 min.
4.	2004 (Oct. 8-24)385 min.
5.	2006 (Oct. 13-27)374 min.
6.	2014 (Sept. 19-Oct. 3)360 min.
	2002 (Sept. 13-27)360 min.
8.	2018 (Aug. 17-26)354 min.
9.	2012 (Aug. 24-Sept. 2)351 min.
10.	2013 (Aug. 23-Sept. 1)348 min.

GAMES STARTED STREAKS

Player	Current	Career Long
Katie McClure	48	48
Addisyn Merrick	40	40
Ceri Holland	32	32
Grace Hagan	31	32
Kaycie Young	13	36
Sarah Peters	12	12
Kaela Hansen	12	12
Miriam Melugin	11	11
Elise Reina	11	11
Madison Meador	6	6
Eva Eliasdottir	5	20
Isabella Cavalcante	0	21
Sophie Maierhofer	0	8
Mandi Duggan	0	4
Kathryn Castro	0	3
Regan Gibbs	0	2
Anna Courtney	0	2
Bri Amos	0	1
Taylor Christie	0	1
Grace Wiltgen	0	1

SOCCER AMERICA POLL

OCT. 2, 2018

Rank	Team	Record	Last Wk
1.	Stanford	10-1-0	.1
2.	USC	9-1-1	.2
3.	Santa Clara	10-1-1	.3
4.	North Carolina	9-2-1	.4
5.	Washington State	10-0-0	.5
6.	Tennessee	9-1-1	.7
7.	Georgetown	10-0-2	.11
8.	South Carolina	9-2-0	.15
9.	Florida State	9-2-1	.16
10.	Texas A&M	11-1-1	.10
11.	Boston College	11-1-0	.8
12.	Virginia	9-2-0	.9
13.	Texas	9-1-2	.6
14.	Colorado	9-0-3	.13
15.	UCLA	6-3-1	.14
16.	Duke	8-2-2	.17
17.	Vanderbilt	11-1-0	.20
18.	West Virginia	7-2-3	.23
19.	Auburn	9-2-1	.18
20.	Virginia Tech	7-2-3	.NR
21.	Memphis	10-1-0	.NR
22.	Nebraska	8-3-3	.NR
23.	Princeton	6-2-2	.22
24.	Oklahoma State	10-2-1	.12
25.	Arizona	8-2-1	.NR

Kansas 2018 opponents are in italics

RPI TOP-25

Rank	Team	Record
1.	Stanford	10-0-1
2.	Santa Clara	10-1-1
3.	North Carolina	9-2-1
4.	Florida St.	9-2-1
5.	Texas A&M	11-1-1
6.	Georgetown	10-0-2
7.	South Carolina	9-2-0
8.	Mississippi St.	8-2-1
9.	Baylor	9-4-0
10.	Texas	9-1-2
11.	Tennessee	9-1-1
12.	NC State	8-3-2
13.	Boston College	11-0-0
14.	Memphis	10-1-0
15.	Southern California	9-1-1
16.	Oklahoma St.	10-2-1
17.	Nebraska	8-3-3
18.	Virginia	9-2-0
19.	West Virginia	7-2-3
20.	Auburn	9-2-1
21.	Arizona	8-2-1
22.	Oregon	7-3-1
23.	Washington St.	10-0-0
24.	TCU	8-3-2
25.	KANSAS	8-2-2

RPI WATCH

RECORD VS.

RPI 1-25	0-2-1
RPI 26-50	1-0-1
RPI 51-100	2-0-0
RPI 101-150	3-0-0
RPI 150+	2-0-0

GOAL DIFFERENTIAL VS.

RPI 1-25	-4
RPI 26-50	+1
RPI 51-100	+2
RPI 101-150	+3
RPI 150+	+6

BEST RESULTS

vs #22 Oregon	T, 1-1
vs #37 Butler	W, 1-0
at #46 Cincinnati	T, 0-0

WORST RESULTS

at #5 Texas A&M	L, 0-3
vs #16 Oklahoma State	L, 1-2

UPCOMING OPPONENTS

RPI	Team	Conference
114	at Kansas State	Big 12
24	TCU	Big 12
63	Texas Tech	Big 12
10	Texas	Big 12

KANSAS RANK

25

KANSAS Strength of Schedule

54

BIG 12 RPI

2

HERO SPORTS POLL

OCT. 1, 2018

Rank	Team	Record	Last Wk
1.	Stanford	9-0-1	.1
2.	USC	8-1-1	.2
3.	Texas A&M	11-1-1	.3
4.	North Carolina	9-2-1	.5
5.	Florida State	9-2-1	.4
6.	Santa Clara	11-1-1	.6
7.	Virginia	9-1-0	.22
8.	UCLA	7-2-1	.10
9.	Penn St.	7-4-0	.18
10.	Texas	9-1-2	.7
11.	Georgetown	10-0-2	.8
12.	Boston College	12-0-0	.17
13.	West Virginia	7-2-3	.12
14.	South Carolina	9-2	.20
15.	Colorado	9-0-2	.19
16.	Oklahoma State	10-2-1	.9
17.	Memphis	10-1	.16
18.	Tennessee	10-1-1	.14
19.	Mississippi State	8-2-1	.11
20.	Duke	8-2-2	.21
21.	Washington State	9-0-0	.13
22.	Northwestern	8-2-2	.23
23.	Vanderbilt	11-1	.NR
24.	Baylor	10-4	.NR
25.	Arizona	7-2-1	.25

Kansas 2018 opponents are in italics

EXPERIENCE VS. YOUTH

The 2018 edition of the Jayhawks is a youthful bunch, with 16 of the 30-woman roster boasting only one season of collegiate experience or less. There are 11 newcomers on this season's roster, including 10 true freshmen, who the coaches are leaning on to contribute almost immediately. The squad will feature four seniors, two of whom are in their fifth year.

HOME SWEET HOME

Rock Chalk Park has been a welcome site for the Jayhawks this season, with Kansas going 6-1-0 in its first seven outings on its home pitch. Including this year's hot start, the Jayhawks are 28-13-2 in matches played at home during the regular season since the start of the 2014 campaign. From 2013-14, Kansas also enjoyed an 11-match home winning streak, the longest in program history.

Since moving into Rock Chalk Park, Kansas has built a goal differential of +24 and boasts a goals-against average of 0.90, a number that includes 15 shutouts.

AMAZING GRACE

Senior forward Grace Hagan hopes to put an emphatic stamp on an already outstanding career at KU. Last year saw her make headlines across the state, the region and the nation. She kicked off the year beginning named to the MAC Hermann Trophy Watch List and ended it on the All-Big 12 Second Team and the All-South Region Third Team. She led the Jayhawks with seven goals, five assists and 19 points, figures that ranked the Wichita product among the top-10 in the Big 12 in their respective categories.

As she works through her senior season, she will be in prime position to make big jumps on some impressive lists, creeping closer to inserting her name among the top offensive players in Jayhawk history. Her 22 career goals currently rank her eighth on Kansas' all-time goal scorer chart and her 14 career assists also have her at No. 11 on KU's all-time assists list.

FEEDING ON NONCON

With the nonconference portion of the season in the rear view mirror, the Jayhawks have wrapped up another dominating preconference campaign. This season, KU made it 11-straight seasons with a .500 winning percentage or better against regular-season nonconference foes. Since the start of the 2012 season, Kansas has posted an impressive 43-20-9 mark in its 72 regular-season nonconference matches (66%), which includes a 31-13-6 mark since 2014. In the last six seasons, KU has outscored noncon opponents by a tally of 120-72. Mark Francis has now led KU to a winning record in noncon in 19 of his 20 seasons in Lawrence and is 123-52-13 in regular-season nonconference games.

UP NEXT

The Jayhawks will return to Lawrence for the final home stand of the regular season when they go up against a pair of squads out of the Lone Star State. On Friday, Oct. 12, the TCU Horned Frogs will come to Rock Chalk Park for a 7 p.m. match. Two days later the Texas Tech Red Raiders will come to town for a Sunday afternoon battle scheduled for 1 p.m. Both matches will be televised on ESPN+.

KANSAS CAREER GOAL SCORING LEADERS

Rnk	Name (Yrs.)	Goals
1.	Caroline Smith (2002-05)	51
2.	Liana Salazar (2011-15)	28
3.	Caroline Kastor (2010-13)	26
	Rachel Gilfillan (2001-04)	26
5.	Whitney Berry (2009-12)	23
	Emily Cressy (2007-10)	23
	Monica Dolinsky (2006-09)	23
8.	Grace Hagan (2015-Present)	22
9.	Ashley Williams (2012-15)	21
10.	Monica Brothers (2001-04)	19

AROUND THE BIG 12

	BIG 12						OVERALL					
	Record	%	Home	Away	Strk	Pts	Record	%	Home	Away	Neut	Stk
West Virginia	3-0	1.000	1-0	2-0	0-0	9	7-2-3	.708	4-1	3-1-1	0-0	W6
Oklahoma State	2-1-1	.625	0-0-1	2-1	0-0	7	10-2-1	.808	5-0-1	5-2	0-0	L1
Oklahoma	2-1-1	.625	1-0-1	1-1	0-0	7	6-5-2	.538	3-2-2	3-3	0-0	W1
KANSAS	2-1-0	.667	2-1	0-0	0-0	6	8-2-2	.750	7-1	0-1-1	1-0	W1
Baylor	2-1-0	.667	1-0	1-1	0-0	6	9-4-0	.692	6-0	2-4	1-0	W2
Texas	1-1-1	.500	1-0	0-1-1	0-0	4	9-1-2	.833	7-0	1-1-2	1-0	L1
Texas Tech	1-2-1	.375	1-2	0-0-1	0-0	4	9-3-1	.731	6-2	3-1-1	0-0	L1
TCU	1-2-1	.375	1-1-1	0-1	0-0	4	8-3-2	.692	6-1-2	2-2	0-0	W1
Iowa State	0-2-1	.167	0-0	0-2-1	0-0	1	2-9-2	.231	2-3	0-5-2	0-1	L2
Kansas State	0-3-0	.000	0-2	0-1	0-0	0	4-6-2	.417	3-4	1-2-2	0-0	L3

CONFERENCE NEWS & NOTES

- Four Big 12 teams are ranked in the United Soccer Coaches Top 25 poll: Texas at No. 13, West Virginia at No. 16, Oklahoma State at No. 21 and Baylor at No. 24. Kansas also received votes.
- The Big 12 ranks as the No. 2 conference in RPI.
- Six Big 12 teams are ranked within the top 25 in the NCAA RPI rankings: No. 9 Baylor, No. 10 Texas, No. 16 Oklahoma State, No. 19 West Virginia, No. 24 TCU and No. 25 Kansas. Other teams within the top 70 include No. 56 Oklahoma and No. 63 Texas Tech.
- In 2018, the Big 12 owns a 57-22-11 (.637) non-conference record.
- Baylor and Texas Tech are tied for fifth in the nation in shutouts (8).
- West Virginia is unbeaten in their last 40 home conference matches, the longest unbeaten streak in Big 12 history and the third-longest active streak nationally.
- Oklahoma's 2-1 win over then-ranked No. 13 Oklahoma State marked the first victory over a ranked opponent since defeating No. 25 Loyola Marymount on Aug. 21, 2016.

PRESEASON ALL-BIG 12 TEAM

Pos.	Name	School	Year
GK	Rylee Foster	West Virginia	Jr.
D	Bianca St. Georges	West Virginia	Sr.
D	Easther Mayi Kith	West Virginia	Sr.
D	Sarah King	Baylor	Sr.
MF	Julie James	Baylor	Sr.
MF	Haley Berg	Texas	So.
MF	Karitas Tomasdottir	TCU	Sr.
F	Haley Woodard	Oklahoma State*	Sr.
F	Sh'Nia Gordon	West Virginia	Sr.
F	Cyera Hintzen	Texas	Jr.
F	Yazmeen Ryan	TCU	So.

* Unanimous selection

LEAGUE LEADERS

INDIVIDUAL

Shots	Haley Woodard, OSU	51
Points	Cyera Hintzen, UT	22
Goals	Cyera Hintzen, UT9
Assists	Katie Glenn, UT6
	Marissa McMahan, OU6
GW Goals	Katie McClure, KU	4
	Marlo Zoller, OSU	4
GAA	Hannah Warner, OSU034
Saves	McKinley, Crone69
Shutouts	Marissa Zucchetto, TTU8
Save Pct.	Hannah Warner, OSU920

TEAM

Shots	West Virginia.	267 (22.3 avg/Gm)
Goals	Baylor.	28 (2.2 avg/Gm)
Assists	Texas	29 (2.4 avg/Gm)
Goals Allowed	West Virginia.	6 (0.5 avg/Gm)
Saves	Oklahoma71 (5.5 avg/Gm)
Fouls	Baylor.158 (12.2 avg/Gm)
Corners	West Virginia.	110 (9.2 avg/Gm)
Shutouts	Baylor.8
	Texas Tech8

THIS WEEKEND'S BIG 12 SCHEDULE

FRIDAY, OCT. 5

Baylor at West Virginia	6 p.m.
Texas Tech at Oklahoma State	6 p.m.
Kansas at Kansas State7 p.m.
Texas at Iowa State7 p.m.
TCU at Oklahoma	8 p.m.

SUNDAY, OCT. 7

Texas at West Virginia	12 p.m.
Baylor at Iowa State	1 p.m.

LAST WEEKEND'S BIG 12 RESULTS

FRIDAY, SEPT. 28

Kansas State 0, at West Virginia 4
TCU 0, at Baylor 1
Texas Tech 0, at Oklahoma 0 (2ot)
Texas 1, at Oklahoma State 1 (2ot)

SATURDAY, SEPT. 29

Iowa State 0, at Kansas 1

SUNDAY, SEPT. 30

Texas 0, at TCU 1
Baylor 2, at Texas Tech 0
Oklahoma State 1, at Oklahoma 2

PLAYER OF THE WEEK AWARDS

Week 1 (Aug. 21)

Offensive . . .	KATIE MCCLURE (KU)
Defensive . . .	Marissa Zucchetto (TTU)
Freshman . . .	Maddie Algya (BU)

Week 2 (Aug. 28)

Offensive . . .	Cyera Hintzen (UT)
Defensive . . .	Nicole Curry (UT)
Freshman . . .	Taylor Moon (BU)

Week 3 (Sept. 4)

Offensive . . .	KATIE MCCLURE (KU)
Defensive . . .	Easther Mya Kith (WVU)
Freshman . . .	Mackenzie McFarland (UT)

Week 4 (Sept. 11)

Offensive . . .	Katie Glenn (UT)
Defensive . . .	Bianca St. Georges (WVU)
Freshman . . .	Maddy Warren (TCU)

Week 5 (Sept. 18)

Offensive . . .	Cyera Hintzen (UT)
Defensive . . .	Jennifer Wandy (BU)
Freshman . . .	Grace Yochum (OSU)
Freshman . . .	Giulianna Cunningham (OSU)

Week 6 (Sept. 25)

Offensive . . .	Marlo Zoller (OSU)
Defensive . . .	Easther Mayi Kith (WVU)
Freshman . . .	Mackenzie McFarland (UT)

Week 7 (Oct. 2)

Offensive . . .	Jackie Crowther (BU)
Defensive . . .	Jennifer Wandt (BU)
Freshman . . .	Alina Stahl (WVU)

Week 8 (Oct. 9)

Offensive	
Defensive	
Freshman	

Week 9 (Oct. 16)

Offensive	
Defensive	
Freshman	

Week 10 (Oct. 23)

Offensive	
Defensive	
Freshman	

Week 11 (Oct. 30)

Offensive	
Defensive	
Freshman	

PRESEASON BIG 12 COACHES' POLL

Rk	School	Points
1.	West Virginia (8)	.79
2.	Oklahoma State (1)	.69
T3.	Baylor	.59
T3.	Texas (1)	.59
5.	TCU	.54
6.	Texas Tech	.40
7.	Kansas	.39
8.	Oklahoma	.23
9.	Kansas State	.16
10.	Iowa State	.12

2018 CATEGORICAL RECORDS

	Big 12	Overall		Big 12	Overall
Overall2-1-0	.8-2-2	vs. RPI 1-25 opponents0-1-0	.0-2-1
Home2-1-0	.7-1-0	vs. RPI 26-50 opponents	0-0-0	.1-0-1
Road	0-0-0	.0-1-1	vs. RPI 51-100 opponents1-0-0	.2-0-0
Neutral Sites	0-0-0	.1-0-1	vs. RPI 101-150 opponents1-0-0	.3-0-0
			vs. RPI 151+ opponents	0-0-0	.2-0-0
On Thursdays	0-0-0	.0-0-1	vs. UnitedSoccer ranked opponents0-1-0	.3-2-0
On Fridays1-0-0	.5-0-0	vs. UnitedSoccer Top-10 opponents	0-0-0	.0-1-0
On Saturdays1-0-0	.1-0-0	vs. UnitedSoccer unranked opponents2-0-0	.5-0-2
On Sundays0-1-0	.2-2-1			
When Scoring First1-0-0	.5-0-1	vs. nonconference opponents	0-0-0	.6-1-2
When Opponent Scores First1-1-0	.3-2-0	In one-goal games2-1-0	.6-1-0
When Leading at Half	0-0-0	.2-0-1	In 90+ degrees	0-0-0	.1-1-0
When Trailing at Half1-0-0	.1-1-0	In 80-89 degrees	0-0-0	.4-0-0
When Tied at Half0-1-0	.4-1-1	In 70-79 degrees0-1-0	.1-1-2
			In 60-69 degrees2-0-0	.2-0-0
In Regulation1-1-0	.6-2-0	In 50-59 degrees	0-0-0	0-0-0
In Overtime1-0-0	.2-0-2	In sub-50 degrees	0-0-0	0-0-0
In August	0-0-0	.4-0-1	Wearing white uniforms	0-0-0	.3-1-0
In September2-1-0	.4-2-1	Wearing blue uniforms1-0-0	.2-0-1
In October	0-0-0	0-0-0	Wearing red uniforms1-0-0	.2-0-0
In November	0-0-0	0-0-0	Wearing alternate uniforms0-1-0	.1-1-1
When scoring zero goals	0-0-0	.0-1-1	In televised games2-1-0	.7-2-2
When scoring one goal1-1-0	.3-1-1			
When scoring two goals1-0-0	.2-0-0			
When scoring three goals	0-0-0	.3-0-0			
When scoring four goals or more	0-0-0	0-0-0			
When allowing zero goals1-0-0	.5-0-1			
When allowing one goal1-0-0	.2-0-1			
When allowing two goals0-1-0	.1-1-0			
When allowing three goals	0-0-0	.0-1-0			
When allowing four goals or more	0-0-0	0-0-0			
When outshooting opponent2-1-0	.7-1-2			
When being outshot	0-0-0	.1-0-0			
When tied in shots	0-0-0	.0-1-0			

MISCELLANEOUS STATS

QUICKEST GOAL:
16:36 - Madise Meador vs. South Dakota St., 8/19/18

QUICKEST GOAL AGAINST:
16:46 - Kaylee Dao of Oklahoma, 9/21/18

GAME-WINNING GOALS AFTER 75':
81:06 - Ceri Holland vs. Iowa State, 9/29/18
84:27 - Elise Reina vs. Butler, 9/2/18
106:11 - Katie McClure vs. Utah, 8/31/18
109:06 - Katie McClure vs. Oklahoma, 9/21/18

GAME-TYING GOALS AFTER 75':
86:16 - Katie McClure vs. Utah, 8/31/18

GAME-WINNING GOALS AGAINST AFTER 75':
None

GAME-TYING GOALS AGAINST AFTER 75':
83:46 - Emma Eddy of Oregon, 8/26/18

MULTI-GOAL GAMES:
Katie McClure vs. Utah, 8/31/18
Taylor Christie vs. Oregon State, 8/24/18

MULTI-GOAL GAMES AGAINST:
None

HAT TRICKS:
Grace Hagan vs. Saint Louis, 9/14/18

HAT TRICKS AGAINST:
None

OWN GOALS FOR:
None

OWN GOALS AGAINST:
None

RED CARDS:
None

OPPONENT RED CARDS:
None

STARTERS - BY MATCH

	GK	F	F	M	M	M	D	D	D	D	D
Pepperdine (8/17)	Peters	McClure	Hagan	Young	Maierhofer	Holland	Amos	Hansen	Meador	Merrick	Cavalcante
South Dakota State (8/19)	Peters	McClure	Hagan	Young	Melugin	Holland	Wiltgen	Hansen	Meador	Merrick	Reina
Oregon State (8/24)	Peters	McClure	Hagan	Young	Melugin	Holland	Reina	Hansen	Meador	Merrick	Cavalcante
Oregon (8/26)	Peters	McClure	Hagan	Young	Melugin	Holland	Reina	Hansen	Meador	Merrick	Cavalcante
Utah (8/31)	Peters	McClure	Hagan	Young	Melugin	Holland	Reina	Hansen	Meador	Merrick	Cavalcante
Butler (9/2)	Peters	McClure	Hagan	Young	Melugin	Holland	Reina	Hansen	Merrick	Cavalcante	Wiltgen
Cincinnati (9/6)	Peters	McClure	Hagan	Young	Melugin	Holland	Reina	Hansen	Meador	Merrick	Cavalcante
Saint Louis (9/14)	Peters	McClure	Hagan	Young	Melugin	Holland	Reina	Hansen	Meador	Merrick	Eliasdottir
Texas A&M (9/16)	Peters	McClure	Hagan	Young	Melugin	Holland	Reina	Hansen	Meador	Merrick	Eliasdottir
Oklahoma (9/21)	Peters	McClure	Hagan	Young	Melugin	Holland	Reina	Hansen	Meador	Merrick	Eliasdottir
Oklahoma State (9/23)	Peters	McClure	Hagan	Young	Melugin	Holland	Reina	Hansen	Meador	Merrick	Eliasdottir
Iowa State (9/29)	Peters	McClure	Hagan	Young	Melugin	Holland	Reina	Hansen	Meador	Merrick	Eliasdottir
Kansas State (10/5)											
TCU (10/12)											
Texas Tech (10/14)											
Texas (10/19)											
Baylor (10/21)											
West Virginia (10/25)											

OVERALL STATISTICS

2018 Kansas Soccer Kansas Overall Individual Statistics (as of Sep 29, 2018) All games

Overall: 8-2-2 Conf: 2-1-0 Home: 7-1-0 Away: 0-1-1 Neut: 1-0-1

##	Player	gp-gs	min	g	a	pts	sh	sh%	sog	sog%	yc	rc	gwg	pk-att	foul	cnr
12	McClure, Katie	12-12	794	6	3	15	26	.231	15	.577	1	0	4	0-0	0	20
25	Hagan, Grace	12-12	897	4	2	10	37	.108	15	.405	0	0	1	0-0	0	2
17	Christie, Taylor	12-0	412	3	0	6	22	.136	7	.318	0	0	0	0-0	0	0
24	Reina, Elise	12-11	968	2	2	6	12	.167	5	.417	0	0	1	0-0	0	23
15	Holland, Ceri	12-12	956	1	3	5	26	.038	7	.269	1	0	1	0-0	0	1
2	Young, Kaycie	12-12	937	1	1	3	17	.059	5	.294	0	0	0	0-0	0	0
9	Meador, Madison	11-11	995	1	0	2	5	.200	1	.200	0	0	1	0-0	0	0
10	Melugin, Miriam	12-11	894	0	1	1	13	.000	5	.385	0	0	0	0-0	0	5
19	Eliasdottir, Eva	7-5	315	0	1	1	4	.000	0	.000	0	0	0	0-0	0	0
28	Amos, Bri	10-1	228	0	1	1	3	.000	0	.000	1	0	0	0-0	0	2
21	Cavalcante, Isabella	7-6	476	0	1	1	1	.000	1	1.000	0	0	0	0-0	0	0
13	Castro, Kathryn	12-0	302	0	0	0	4	.000	2	.500	0	0	0	0-0	0	0
8	Courtney, Anna	7-0	124	0	0	0	4	.000	1	.250	0	0	0	0-0	0	1
23	Wiltgen, Grace	12-2	551	0	0	0	3	.000	2	.667	0	0	0	0-0	0	0
14	Barnett, Samantha	12-0	221	0	0	0	3	.000	0	.000	0	0	0	0-0	0	1
27	Maierhofer, Sophie	5-1	107	0	0	0	2	.000	0	.000	0	0	0	0-0	0	1
26	Merrick, Addisyn	12-12	1142	0	0	0	2	.000	1	.500	1	0	0	0-0	0	0
6	Hansen, Kaela	12-12	968	0	0	0	2	.000	1	.500	0	0	0	0-0	0	0
22	Duggan, Mandi	3-0	31	0	0	0	1	.000	0	.000	0	0	0	0-0	0	0
16	Bradley, Italia	7-0	106	0	0	0	0	.000	0	.000	0	0	0	0-0	0	0
7	Hall, Avery	3-0	45	0	0	0	0	.000	0	.000	0	0	0	0-0	0	0
5	Pesek, Olivia	1-0	11	0	0	0	0	.000	0	.000	0	0	0	0-0	0	0
4	Lane, Kailey	4-0	30	0	0	0	0	.000	0	.000	0	0	0	0-0	0	0
3	Swaby-Wallerson, Maya	2-0	21	0	0	0	0	.000	0	.000	0	0	0	0-0	0	0
Total		12	-	18	15	51	187	.096	68	.364	4	0	8	0-0	119	-
Opponents		12	-	10	10	30	85	.118	34	.400	3	0	2	0-0	95	-

#	Goalie	gp-gs	Goal Average			Saves		Record				Shots faced
			min	ga	gaavg	saves	pct	w	l	t	sho/cbo	
00	Peters, Sarah	12-12	1155:17	10	0.78	23	.697	8	2	2	6/0	84
TM	TEAM	-	0:00	0	0.00	1	1.000	0	0	0	0/0	0
Total		12	1155:17	10	0.78	24	.706	8	2	2	6	84
Opponents		12	1155:17	18	1.40	50	.735	2	8	2	2	187

Team saves: 1

Goals by Period	1st	2nd	OT	OT2	Total
Kansas	7	9	0	2	18
Opponents	4	6	0	0	10

Corners by Period	1st	2nd	OT	OT2	Total
Kansas	20	28	3	5	56
Opponents	16	21	3	2	42

Shots by Period	1st	2nd	OT	OT2	Total
Kansas	70	102	8	7	187
Opponents	33	45	2	5	85

Fouls by Period	1st	2nd	OT	OT2	Total
Kansas	57	57	2	3	119
Opponents	39	50	3	3	95

Saves by Period	1st	2nd	OT	OT2	Total
Kansas	12	11	0	1	24
Opponents	17	30	0	3	50

Attendance Summary	KU	Opponent
Total	5867	2423
Dates/Avg Per Date	8/733	2/1212
Neutral Site #/Avg	2/158	

CONFERENCE STATISTICS

**2018 Kansas Soccer
Kansas Overall Individual Statistics (as of Sep 29, 2018)
Conference games**

Overall: 2-1-0 Conf: 2-1-0 Home: 2-1-0 Away: 0-0-0 Neut: 0-0-0

##	Player	gp-gs	min	g	a	pts	sh	sh%	sog	sog%	yc	rc	gwg	pk-att	foul	cnr
24	Reina, Elise	3-3	247	1	1	3	7	.143	3	.429	0	0	0	0-0	0	13
25	Hagan, Grace	3-3	258	1	1	3	6	.167	3	.500	0	0	0	0-0	0	0
15	Holland, Ceri	3-3	248	1	0	2	10	.100	3	.300	1	0	1	0-0	0	1
12	McClure, Katie	3-3	221	1	0	2	4	.250	2	.500	0	0	1	0-0	0	7
10	Melugin, Miriam	3-3	239	0	1	1	6	.000	3	.500	0	0	0	0-0	0	0
19	Eliasdottir, Eva	3-3	169	0	1	1	3	.000	0	.000	0	0	0	0-0	0	0
17	Christie, Taylor	3-0	93	0	0	0	7	.000	2	.286	0	0	0	0-0	0	0
2	Young, Kaycie	3-3	235	0	0	0	5	.000	1	.200	0	0	0	0-0	0	0
28	Amos, Bri	2-0	49	0	0	0	3	.000	0	.000	0	0	0	0-0	0	0
27	Maierhofer, Sophie	3-0	66	0	0	0	2	.000	0	.000	0	0	0	0-0	0	1
23	Wiltgen, Grace	3-0	113	0	0	0	2	.000	1	.500	0	0	0	0-0	0	0
26	Merrick, Addisyn	3-3	289	0	0	0	1	.000	0	.000	0	0	0	0-0	0	0
13	Castro, Kathryn	3-0	43	0	0	0	1	.000	1	1.000	0	0	0	0-0	0	0
16	Bradley, Italia	1-0	33	0	0	0	0	.000	0	.000	0	0	0	0-0	0	0
14	Barnett, Samantha	3-0	28	0	0	0	0	.000	0	.000	0	0	0	0-0	0	1
9	Meador, Madison	3-3	272	0	0	0	0	.000	0	.000	0	0	0	0-0	0	0
8	Courtney, Anna	1-0	6	0	0	0	0	.000	0	.000	0	0	0	0-0	0	0
6	Hansen, Kaela	3-3	272	0	0	0	0	.000	0	.000	0	0	0	0-0	0	0
4	Lane, Kailey	1-0	7	0	0	0	0	.000	0	.000	0	0	0	0-0	0	0
Total		3	-	4	4	12	57	.070	19	.333	1	0	2	0-0	29	-
Opponents		3	-	3	2	8	19	.158	11	.579	0	0	1	0-0	24	-

#	Goalie	gp-gs	Goal Average			Saves		Record				Shots faced
			min	ga	gaavg	saves	pct	w	l	t	sho/cbo	
00	Peters, Sarah	3-3	289:06	3	0.93	8	.727	2	1	0	1/0	19
Total		3	289:06	3	0.93	8	.727	2	1	0	1	19
Opponents		3	289:06	4	1.25	15	.789	1	2	0	0	57

Team saves: 0

Goals by Period	1st	2nd	OT	OT2	Total
Kansas	0	3	0	1	4
Opponents	1	2	0	0	3

Corners by Period	1st	2nd	OT	OT2	Total
Kansas	4	17	1	1	23
Opponents	1	7	2	0	10

Shots by Period	1st	2nd	OT	OT2	Total
Kansas	16	35	2	4	57
Opponents	5	12	1	1	19

Fouls by Period	1st	2nd	OT	OT2	Total
Kansas	11	16	1	1	29
Opponents	12	11	1	0	24

Saves by Period	1st	2nd	OT	OT2	Total
Kansas	2	5	0	1	8
Opponents	5	8	0	2	15

Attendance Summary	KU	Opponent
Total	3017	0
Dates/Avg Per Date	3/1006	0/0
Neutral Site #/Avg	0/0	

RESULTS

2018 Kansas Soccer
Kansas Game Results (as of Sep 29, 2018)
All games

Date	Opponent		Score	Overall	Conf	Att.	Goals scored
Aug 17	#18 PEPPERDINE	W	1-0	1-0-0	0-0-0	557	McClure, Katie (unassisted)
Aug 19	SOUTH DAKOTA STATE	W	3-0	2-0-0	0-0-0	213	Meador, Madison (McClure, Katie) McClure, Katie (Hagan, Grace) Christie, Taylor (unassisted)
Aug 24	vs Oregon State	W	3-0	3-0-0	0-0-0	152	McClure, Katie (Reina, Elise) Christie, Taylor (McClure, Katie) Christie, Taylor (unassisted)
Aug 26	vs Oregon	TO2	1-1	3-0-1	0-0-0	163	Young, Kaycie (Cavalcante, Isabella)
Aug 31	UTAH	WO2	2-1	4-0-1	0-0-0	665	McClure, Katie (Young, Kaycie) McClure, Katie (Holland, Ceri)
Sep 02	#25 BUTLER	W	1-0	5-0-1	0-0-0	754	Reina, Elise (McClure, Katie; Amos, Bri)
Sep 06	at Cincinnati	TO2	0-0	5-0-2	0-0-0	197	-
Sep 14	SAINT LOUIS	W	3-2	6-0-2	0-0-0	661	Hagan, Grace (Holland, Ceri) Hagan, Grace (unassisted) Hagan, Grace (Holland, Ceri)
Sep 16	at #4 Texas A&M	L	0-3	6-1-2	0-0-0	2226	-
* Sep 21	OKLAHOMA	WO2	2-1	7-1-2	1-0-0	1271	Reina, Elise (unassisted) McClure, Katie (Eliasdottir, Eva; Melugin, Miriam)
* Sep 23	#15 OKLAHOMA STATE	L	1-2	7-2-2	1-1-0	832	Hagan, Grace (Reina, Elise)
* Sep 29	IOWA STATE	W	1-0	8-2-2	2-1-0	914	Holland, Ceri (Hagan, Grace)

Team Record	W-L-T	Attendance	Dates	Total	Avg.
Overall:	8-2-2	Total:	12	8605	717
Conference:	2-1	Home:	8	5867	733
Home:	7-1	Away:	2	2423	1212
Away:	0-1-1	Neutral:	2	315	158
Neutral:	1-0-1				
Overtime:	2-0-2				

KANSAS TEAM STATS GAME-BY-GAME

Date	Opponent	Score	G	A	Pts	Sh	Sh%	Sog	Sog%	GW	PK-Att	YC	RC	Min
Aug 17, 2018	PEPPERDINE	1-0	1	0	2	6	.167	2	.333	1	0-0	0	0	990
Aug 19, 2018	SOUTH DAKOTA STATE	3-0	3	2	8	24	.125	7	.292	1	0-0	0	0	992
Aug 24, 2018	vs Oregon State	3-0	3	2	8	13	.231	6	.462	1	0-0	0	0	972
Aug 26, 2018	vs Oregon	1-1	1	1	3	19	.053	7	.368	0	0-0	0	0	1210
Aug 31, 2018	UTAH	2-1	2	2	6	16	.125	7	.438	1	0-0	0	0	1167
Sep 02, 2018	BUTLER	1-0	1	2	4	10	.100	4	.400	1	0-0	1	0	990
Sep 06, 2018	at Cincinnati	0-0	0	0	0	19	.000	6	.316	0	0-0	1	0	1209
Sep 14, 2018	SAINT LOUIS	3-2	3	2	8	11	.273	8	.727	1	0-0	0	0	990
Sep 16, 2018	at Texas A&M	0-3	0	0	0	12	.000	2	.167	0	0-0	1	0	989
Sep 21, 2018	OKLAHOMA	2-1	2	2	6	19	.105	6	.316	1	0-0	1	0	1198
Sep 23, 2018	OKLAHOMA STATE	1-2	1	1	3	21	.048	6	.286	0	0-0	0	0	990
Sep 29, 2018	IOWA STATE	1-0	1	1	3	17	.059	7	.412	1	0-0	0	0	989
Kansas		18-10	18	15	51	187	.096	68	.364	8	0-0	4	0	12686
			10	10	30	85	.118	34	.400	2	0-0	3	0	-

TEAM PER-GAME

Games played: 12

Shots per game: 15.58;Goals per game: 1.50

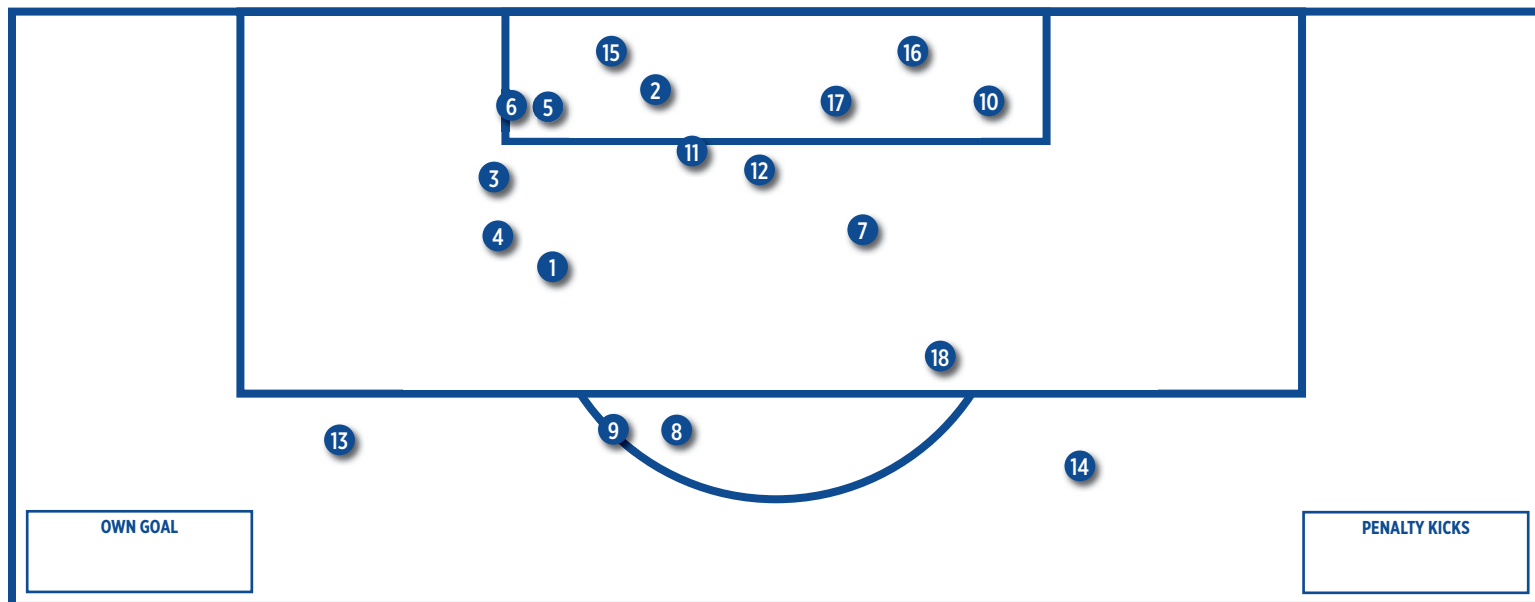
Assists per game: 1.25;Points per game: 4.25

KANSAS GAME-BY-GAME COMPARISON (KANSAS/OPPONENT)

Date	Opponent	Score	Goals	Assists	Shots	On Goal	Corners	CKgoals	Fouls	YC	RC	Offside
Aug 17	PEPPERDINE	1-0	1/0	0/0	6/8	2/2	2/5	0/0	5/6	0/0	0/0	5/3
Aug 19	SOUTH DAKOTA STATE	3-0	3/0	2/0	24/7	7/2	5/3	1/0	11/5	0/0	0/0	1/2
Aug 24	Oregon State	3-0	3/0	2/0	13/2	6/0	1/1	0/0	11/9	0/0	0/0	1/2
Aug 26	Oregon	1-1	1/1	1/1	19/6	7/3	5/3	0/0	9/5	0/0	0/0	1/6
Aug 31	UTAH	2-1	2/1	2/0	16/12	7/2	4/5	0/0	14/12	0/1	0/0	4/1
Sep 02	BUTLER	1-0	1/0	2/0	10/6	4/2	2/2	1/0	10/9	1/1	0/0	1/0
Sep 06	Cincinnati	0-0	0/0	0/0	19/7	6/1	7/2	0/0	11/6	1/0	0/0	3/4
Sep 14	SAINT LOUIS	3-2	3/2	2/3	11/6	8/3	5/2	0/0	8/10	0/0	0/0	2/0
Sep 16	Texas A&M	0-3	0/3	0/4	12/12	2/8	2/9	0/0	11/9	1/1	0/0	2/3
Sep 21	OKLAHOMA	2-1	2/1	2/1	19/9	6/5	6/5	0/0	9/8	1/0	0/0	4/2
Sep 23	OKLAHOMA STATE	1-2	1/2	1/1	21/6	6/5	9/3	1/0	9/7	0/0	0/0	0/2
Sep 29	IOWA STATE	1-0	1/0	1/0	17/4	7/1	8/2	0/0	11/9	0/0	0/0	0/1
Totals		18-10	18/10	15/10	187/85	68/34	56/42	3/0	119/95	4/3	0/0	24/26

Note: Game totals are displayed in the format TEAM/OPPONENT for each category

KANSAS GOAL CHART

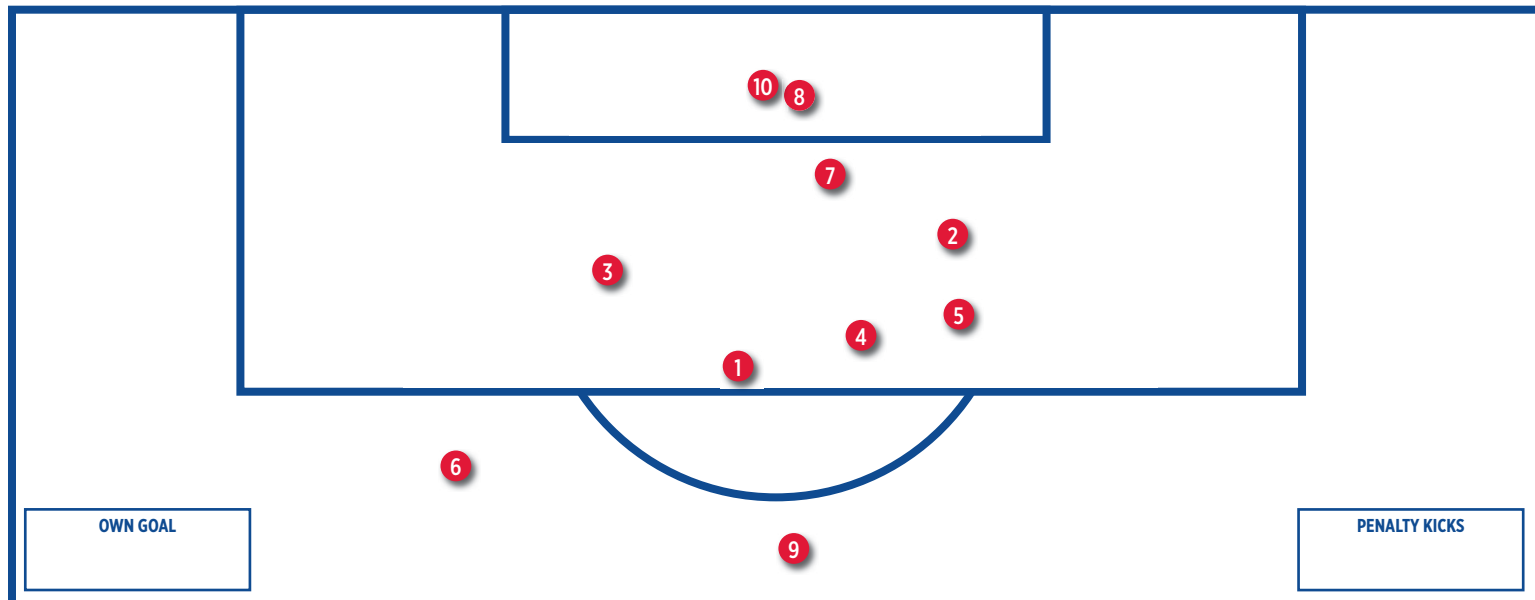


KANSAS GOAL INFORMATION

- 1 - Katie McClure (unassisted) vs. Pepperdine, 60:05
- 2 - Madison Meador (McClure) vs. South Dakota State, 16:36 *
- 3 - Katie McClure (Hagan) vs. South Dakota State, 47:38
- 4 - Taylor Christie (unassisted) vs. South Dakota State, 75:34
- 5 - Katie McClure (Reina) vs. Oregon State, 16:57
- 6 - Taylor Christie (McClure) vs. Oregon State, 27:42
- 7 - Taylor Christie (unassisted) vs. Oregon State, 39:06
- 8 - Kaycie Young (Cavalcante) vs. Oregon, 25:01
- 9 - Katie McClure (Young) vs. Utah, 86:16
- 10 - Katie McClure (Holland) vs. Utah, 106:11

- 11 - Elise Reina (McClure, Amos) vs. Butler, 84:27 *
- 12 - Grace Hagan (Holland) vs. Saint Louis, 20:56 +
- 13 - Grace Hagan (unassisted) vs. Saint Louis, 30:51
- 14 - Grace Hagan (Holland) vs. Saint Louis, 52:12
- 15 - Elise Reina (unassisted) vs. Oklahoma, 59:24
- 16 - Katie McClure (Eliasdottir, Melugin) vs. Oklahoma, 109:06
- 17 - Grace Hagan (Reina) vs. Oklahoma State, 89:47 *
- 18 - Ceri Holland (Hagan) vs. Iowa State, 81:06

OPPONENT GOAL CHART



OPPONENT GOAL INFORMATION

- 1 - Emma Eddy (Oregon), 83:46
- 2 - Hailey Skolmoski (Utah), 85:40
- 3 - Alyssa Seitzer (Saint Louis), 18:00
- 4 - Hannah Friedrich (Saint Louis), 19:02
- 5 - Abby Grace Cooper (Texas A&M), 38:52
- 6 - Addie McCain (Texas A&M), 64:44
- 7 - Ally Watt (Texas A&M), 66:14
- 8 - Kaylee Dao (Oklahoma), 16:46
- 9 - Haley Woodard (Oklahoma State), 47:29
- 10 - Marlo Zoller (Oklahoma State), 66:53 +

Key: + Off free kick, < Penalty Kick, * Off Corner

SINGLE MATCH INDIVIDUAL RECORDS

POINTS

No.	Player	Points
1.	Shannon McCabe (vs. Francis Marion, Oct. 19, 2008)	7
	Caroline Smith (vs. Northwestern, Aug. 29, 2003)	7
3.	Grace Hagan (vs. Saint Louis, Sept. 14, 2018)	6
	Monica Dolinsky (at Missouri, Oct. 15, 2006)	6
	Jessica Smith (vs. Oklahoma State, Oct. 7, 2005)	6
	Caroline Smith (vs. Florida State, Sept. 12, 2003)	6
	Monica Brothers (at Oklahoma State, Sept. 30, 2001)	6
	Natalie Hoogveld (at Colorado, Oct. 14, 2001)	6
	Brianna Valento (vs. St. Louis, Oct. 30, 2001)	6

GOALS

No.	Player	Goals
1.	Grace Hagan (vs. Saint Louis, Sept. 14, 2018)	3
	Shannon McCabe (vs. Francis Marion, Oct. 19, 2008)	3
	Jessica Smith (vs. Oklahoma State, Oct. 7, 2005)	3
	Caroline Smith (vs. Florida State, Sept. 12, 2003)	3
	Caroline Smith (vs. Northwestern, Aug. 29, 2003)	3
	Brianna Valento (vs. St. Louis, Oct. 30, 2001)	3
	Natalie Hoogveld (at Colorado, Oct. 14, 2001)	3
	Monica Brothers (vs. Oklahoma State, Sept. 30, 2001)	3

ASSISTS

No.	Player	Goals
1.	Hilla Rantala (at Oklahoma State, Sept. 30, 2001)	4
2.	Whitney Berry (vs. Texas, Sept. 30, 2011)	3
	Monica Dolinsky (vs. Texas A&M, Nov. 5, 2008)	3
	Jessica Bush (vs. UAB, Sept. 5, 2008)	3
	Hilla Rantala (vs. St. Louis, Oct. 30, 2001)	3
	Melanie Schroeder (vs. UNLV, Sept. 7, 2001)	3

SHOTS

No.	Player	Shots
1.	Caroline Smith (vs. Missouri, Oct. 28, 2005)	12
2.	Caroline Smith (vs. Colorado, Sept. 27, 2002)	10
	Denise Cooke (vs. CMSU, Oct. 13, 1995)	10

SHOTS ON GOAL

No.	Player	SOG
1.	Caroline Smith (vs. Missouri, Oct. 28, 2005)	7
2.	Caroline Smith (at Mississippi State, Sept. 8, 2002)	6
3.	Grace Hagan (vs. Saint Louis, Sept. 14, 2018)	5
	Ingrid Vidal (at Missouri, Oct. 21, 2011)	5
	Jessica Smith (vs. Oklahoma State, Oct. 7, 2005)	5
	Caroline Smith (vs. UC Irvine, Sept. 16, 2005)	5
	Caroline Smith (vs. Baylor, Oct. 3, 2004)	5
	Nicole Cauzillo (vs. Texas Tech, Oct. 1, 2004)	5

	Caroline Smith (vs. Colorado, Sept. 27, 2002)	5
	Monica Brothers (vs. North Texas, Aug. 31, 2001)	5

SAVES

No.	Player	Saves
1.	Betsy Pollard (at Texas Tech, Oct. 3, 1999)	16
2.	Kat Liebetrau (at Georgia, Aug. 29, 2010)	15
	Laura Rohde (at Mississippi, Oct. 29, 1999)	15
	Jen Fecke (vs. UTEP, Oct. 6, 1996)	15
5.	Betsy Pollard (at Georgia, Sept. 17, 1999)	14
	Betsy Pollard (at Utah, Sept. 3, 1999)	14
	Jen Fecke (at Baylor, Sept. 14, 1997)	14

INDIVIDUAL STREAKS

Consecutive Matches w/ a Point	9
(Hilla Rantala, Aug. 31-Oct. 5, 2001)	
Consecutive Matches w/ a Goal	5 (twice)
(Liana Salazar, Aug. 22 - Sept. 5 2014)	
(Hilla Rantala, Sept. 1-Sept. 23, 2001)	
Consecutive Matches w/ an Assist	4
(Whitney Berry, Sept. 27-Oct. 9, 2009)	
Consecutive Matches w/ a GWG	3 (twice)
(Jessica Bush, Oct. 13-Oct. 20, 2006)	
(Ashley Williams Oct. 3- Oct. 10, 2014)	

Single Match Team Records

Points	19
(vs. Francis Marion, Oct. 19, 2008)	
Goals	7
(vs. Francis Marion, Oct. 19, 2008)	
Assists	6 (four times)
(at Texas Tech, Oct. 14, 2005), (vs. Creighton, Nov. 12, 2004)	
(vs. Texas Tech, Oct. 1, 2004), (vs. Colorado, Sept. 27, 2002)	
Shots	36
(vs. Michigan, Aug. 26, 2005)	
Shots on Goal	20
(vs. Wyoming, Aug. 29, 1999)	
Saves	16
(at Texas Tech, Oct. 3, 1999)	
Shots Allowed	45
(at Nebraska, Sept. 22, 1995)	
Shots on Goal Allowed	19
(at Nebraska, Oct. 15, 1999)	
Fewest Shots	0
(at Virginia, Sept. 19, 1997)	
Fewest Shots on Goal	0 (3 times)
(vs. Baylor, Oct. 15, 2017), (vs. West Virginia, Nov. 6, 2013),	
(at Virginia, Sept. 19, 1997)	
Corner Kicks	21
(vs. Baylor, Sept. 23, 2005)	
Fouls	25
(at Oklahoma State, Oct. 9, 1998)	
Goals (In Defeat)	4
(vs. Nebraska, Oct. 23, 2009 [L, 4-7])	
Goals (Both Teams)	11
(vs. Nebraska, Oct. 23, 2009 [L, 4-7])	
Goals Allowed	8 (twice)
(at Nebraska, Oct. 15, 1999), (at Nebraska, Sept. 22, 1995)	
Consecutive Shutouts	5
(Meghan Miller, Aug. 28-Sept. 9, 2004)	
OPPONENT HIGHS	
Points	7
(Anna Caniglia, Nebraska, Oct. 23, 2009)	
Goals	3 (nine times)
Last: (Anna Caniglia, Nebraska, Oct. 23, 2009)	
Assists	3
(Kristen Koop, Texas A&M, Sept. 13, 1996)	
(Sandy Smith, Nebraska, Sept. 22, 1995)	
Shots	13
(Courtney Saunders, Baylor, Oct. 2, 1998)	
Shots on Goal	6
(Becky Nelson, Oklahoma, Oct. 24, 2003)	
Saves	16
(Amanda Vandervort, Wyoming, Aug. 29, 1999)	
Goals Allowed (In Victory)	3 (three times)
(vs. Duke, Sept. 10, 2006 [W, 4-3])	
(at Oklahoma State, Sept. 30, 2001 [W, 5-3])	
(vs. Colorado, Sept. 28, 1997 [W, 4-3])	
First Half Goals	4
(vs. Central Missouri State, Oct. 18, 2002)	
Second Half Goals	5
(vs. Francis Marion, Oct. 19, 2008)	
Margin of Victory	7
(vs. Francis Marion, Oct. 19, 2008 [W, 7-0])	
Margin of Defeat	7 (twice)
(at Nebraska, 10/15/1999 [1-8, L]), (at Nebraska, 9/22/1995 [1-8, L])	
Quickest Goal	0:18
(Caroline Kastor, at Colorado, Oct. 25, 2010)	
Quickest Goal Allowed	0:11
(Whitney Palmer, Oklahoma, Oct. 10, 2010)	
Quickest Goal (Second Half)	45:11
(Shayna Teutsch, at UTEP, Oct. 6, 1996)	
Quickest Goal Allowed (Second Half)	45:39
(Katy Lindenmuth, Wisconsin, Aug. 28, 2005)	
Quickest Goal (Overtime)	91:55
(Kim Boyer, vs. Missouri State, Sept. 18, 2007)	
Quickest Goal Allowed (Overtime)	92:03
(Kasey Langdon, Oklahoma St., Oct. 10, 2008)	
Shortest Span Between Goals	0:15
(Lindsey Horner, Carmel Kaplinger vs. Iowa State, Sept. 29, 2000)	
Shortest Span Between Goals Allowed	0:14
(Katie Baruth and Carol Ditch, Texas, Sept. 15, 1996)	
Shortest Span Between Goals (Both Teams)	0:08
(KayAnne Gummersall, Duke and Holly Gault, Kansas, Sept. 10, 2006)	
Attendance (Home)	2,514
(vs. Kansas State, Oct. 6, 2017)	
Attendance (Away)	5,205
(at Saint Louis, Sept. 8, 2017)	

SINGLE SEASON RECORDS

POINTS

No.	Player	Points
1.	.Caroline Smith (2003) (19 goals, 3 assists)	41
2.	.Caroline Smith (2004) (11 goals, 10 assists)	32
	.Hilla Rantala (2001) (10 goals, 12 assists)	32
4.	.Liana Salazar (2014) (13 goals, 4 assists)	30
5.	.Whitney Berry (2011) (8 goals, 13 assists)	29
6.	.Ingrid Vidal (2011) (11 goals, 6 assists)	28
	.Monica Dolinsky (2008) (9 goals, 10 assists)	28
8.	.Emily Cressy (2009) (12 goals, 3 assists)	27
	.Caroline Smith (2002) (12 goals, 3 assists)	27
10.	.Caroline Smith (2005) (9 goals, 8 assists)	26

GOALS

No.	Player	Goals
1.	.Caroline Smith (2003)	19
2.	.Liana Salazar (2014)	13
3.	.Emily Cressy (2009)	12
	.Caroline Smith (2002)	12
5.	.Caroline Kastor (2012)	11
	.Ingrid Vidal (2011)	11
	.Caroline Smith (2004)	11
8.	.Hilla Rantala (2001)	10
9.	.Monica Dolinsky (2008)	9
	.Shannon McCabe (2008)	9
	.Caroline Smith (2005)	9
	.Monica Brothers (2001)	9

GAME-WINNING GOALS

No.	Player	GWG
1.	.Caroline Smith (2003)	7
2.	.Caroline Kastor (2012)	5
	.Emily Cressy (2009)	5
	.Rachel Gilfillan (2004)	5
5.	Katie McClure (2018)	4
	.Liana Salazar (2014)	4
	.Ashley Williams (2014)	4
	.Ingrid Vidal (2011)	4
	.Emily Cressy (2008)	4
	.Shannon McCabe (2008)	4
	.Jessica Bush (2006)	4
	.Caroline Smith (2002)	4
	.Monica Brothers (2001)	4

ASSISTS

No.	Player	Assists
1.	.Whitney Berry (2011)	13
2.	.Hilla Rantala (2001)	12
3.	.Monica Dolinsky (2009)	10
	.Monica Dolinsky (2008)	10
	.Caroline Smith (2004)	10
6.	.Whitney Berry (2009)	9
7.	.Caroline Smith (2005)	8
	.Melanie Schroeder (2000)	8
	.Meghann Haven (1999)	8
10.	.Ali Kimura (2014)	7
	.Whitney Berry (2012)	7
	.Caroline Kastor (2011)	7
	.Jessica Bush (2008)	7
	.Holly Gault (2006)	7
	.Lauren Williams (2004)	7

SHOTS

No.	Player	Shots
1.	.Caroline Smith (2005)	98
2.	.Caroline Smith (2004)	92
3.	.Whitney Berry (2011)	85
	.Caroline Smith (2003)	85
5.	.Monica Dolinsky (2008)	79
6.	.Emily Cressy (2009)	73
7.	.Monica Dolinsky (2009)	71
8.	.Denise Cooke (1995)	68
9.	.Whitney Berry (2012)	66
10.	.Whitney Berry (2010)	65

SHOTS ON GOAL

No.	Player	SOG
1.	.Caroline Smith (2003)	46
2.	.Caroline Smith (2004)	45
3.	.Caroline Smith (2005)	43
4.	.Emily Cressy (2009)	42
5.	.Whitney Berry (2011)	41
6.	.Monica Dolinsky (2008)	37
7.	.Caroline Kastor (2012)	32
	.Caroline Smith (2002)	32
9.	.Whitney Berry (2012)	30
	.Hilla Rantala (2001)	30

* - Individual shots on goal kept since 1999

MINUTES PLAYED (FIELD)

No.	Player	Minutes
1.	.Estelle Johnson (2008)	2,110
2.	.Shelby Williamson (2009)	2,012
3.	.Estelle Johnson (2009)	1,987
4.	.Kayla Morrison (2016)	1,985
5.	.Afton Sauer (2004)	1,981
6.	.Kayla Morrison (2015)	1,977
7.	.Morgan Williams (2015)	1,963
8.	.Geneva Magness (2009)	1,958
9.	.Lauren Jackson (2009)	1,916
10.	.Afton Sauer (2007)	1,911

* - Individual minutes kept since 2004

MINUTES PLAYED (KEEPERS)

No.	Player	Minutes
1.	.Meghan Miller (2003)	2,281
2.	.Maddie Dobyms (2015)	2,074
2.	.Meghan Miller (2004)	2,060
3.	.Colleen Quinn (2007)	1,952
4.	.Julie Hanley (2008)	1,899

SAVES

No.	Player	Saves
1.	.Jen Fecke (1996)	150
2.	.Jen Fecke (1997)	147
3.	.Betsy Pollard (1999)	125
4.	.Kat Liebetrau (2010)	113
5.	.Meghan Miller (2003)	111

GOALS AGAINST AVG. (MINIMUM 1,000 MIN.)

No.	Player	GAA
1.	.Meghan Miller (2004) (13 GA, 2,061 min.)	0.57
2.	.Kaitlyn Stroud (2014) (14 GA, 1,722 min.)	0.73
3.	.Meghan Miller (2003) (19 GA, 2,281 min.)	0.75
4.	Sarah Peters (2018) (10 GA, 1,155 min.)	0.78
5.	.Maddie Dobyms (2016) (14 GA, 1,554 min.)	0.81
6.	.Julie Hanley (2006) (19 GA, 1,738 min.)	0.98

SAVE PERCENTAGE (MINIMUM 1,000 MIN.)

No.	Player	Save Pct.
1.	.Meghan Miller (2004) (13 GA, 96 saves)	.881
2.	.Meghan Miller (2003) (19 GA, 111 saves)	.854
3.	.Kaitlyn Stroud (2014) (14 GA, 77 saves)	.846
4.	.Betsy Pollard (1999) (29 GA, 125 saves)	.812
5.	.Kaitlyn Stroud (2013) (25 GA, 107 saves)	.811

SHUTOUTS

No.	Player	Shutouts
1.	.Meghan Miller (2004)	11
2.	.Meghan Miller (2003)	10
3.	.Kaitlyn Stroud (2014)	8
4.	.Julie Hanley (2006)	7
5.	Sarah Peters (2018)	6
	.Maddie Dobyms (2015)	6

WINS

No.	Player	Wins
1.	.Meghan Miller (2004)	18
	.Meghan Miller (2003)	18
3.	.Kaitlyn Stroud (2014)	14
4.	.Julie Hanley (2008)	13
	.Meghan Miller (2001)	13
6.	.Julie Hanley (2006)	11

CAREER RECORDS

POINTS

No.	Player	Pts.
1.	Caroline Smith (2002-05) (51 goals, 24 assists)	126
2.	Whitney Berry (2009-12) (23 goals, 32 assists)	78
3.	Monica Dolinsky (2006-09) (23 goals, 30 assists)	76
4.	Liana Salazar (2011-15) (28 goals, 12 assists)	68
	Rachel Gilfillan (2001-04) (26 goals, 16 assists)	68
6.	Caroline Kastor (2010-13) (26 goals, 14 assists)	66
7.	Grace Hagan (2015-Present) (22 goals, 14 assists)	58
8.	Ashley Williams (2012-15) (21 goals, 10 assists)	52
	Emily Cressy (2008-10) (23 goals, 6 assists)	52

GOALS

No.	Player	Goals
1.	Caroline Smith (2002-05)	51
2.	Liana Salazar (2011-15)	28
3.	Caroline Kastor (2010-13)	26
	Rachel Gilfillan (2001-04)	26
5.	Whitney Berry (2009-12)	23
	Emily Cressy (2008-10)	23
	Monica Dolinsky (2006-09)	23
8.	Grace Hagan (2015-Present)	22
9.	Ashley Williams (2012-15)	21
10.	Monica Brothers (2001-04)	19

GAME-WINNING GOALS

No.	Player	GWG
1.	Caroline Smith (2002-05)	14
2.	Emily Cressy (2008-10)	11
3.	Ashley Williams (2012-15)	10
	Rachel Gilfillan (2001-04)	10
5.	Katie McClure (2016-Present)	8
	Monica Brothers (2001-04)	8
7.	Liana Salazar (2011-15)	7
	Caroline Kastor (2010-13)	7
	Monica Dolinsky (2006-09)	7
	Jessica Bush (2005-08)	7
11.	Jamie Fletcher (2011-14)	6
	Shannon McCabe (2006-09)	6

ASSISTS

No.	Player	Assists
1.	Whitney Berry (2009-12)	32
2.	Monica Dolinsky (2006-09)	30
3.	Caroline Smith (2002-05)	24
4.	Jessica Bush (2005-08)	21
5.	Holly Gault (2003-06)	19
	Hilla Rantala (1999-2001)	19
7.	Amy Geha (2001-04)	17
	Melanie Schroeder (1998-2001)	17
9.	Rachel Gilfillan (2001-04)	16
10.	Meghan Haven (1997-2000)	15
11.	Grace Hagan (2015-Present)	14

SHOTS

No.	Player	Shots
1.	Caroline Smith (2002-05)	333
2.	Whitney Berry (2009-12)	267
3.	Monica Dolinsky (2006-09)	226
4.	Jamie Fletcher (2011-14)	206
5.	Liana Salazar (2011-15)	194
6.	Rachel Gilfillan (2001-04)	175
7.	Caroline Kastor (2010-13)	159
8.	Ashley Williams (2012-15)	154
9.	Grace Hagan (2015-Present)	153
10.	Jessica Bush (2005-08)	150

SHOTS ON GOAL

No.	Player	SOG
1.	Caroline Smith (2002-05)	166
2.	Whitney Berry (2009-12)	113
3.	Monica Dolinsky (2006-09)	96
4.	Rachel Gilfillan (2001-04)	92
5.	Liana Salazar (2011-15)	86
6.	Jamie Fletcher (2011-14)	79
7.	Emily Cressy (2008-10)	78
8.	Caroline Kastor (2010-13)	77
9.	Ashley Williams (2012-15)	74
10.	Jessica Bush (2005-08)	70

GAMES PLAYED (FIELD)

No.	Player	Games
1.	Amy Geha (2001-04)	88
2.	Rachel Gilfillan (2001-04)	87
	Lauren Williams (2001-04)	87
4.	Estelle Johnson (2006-09)	85
	Holly Gault (2003-06)	85
	Monica Brothers (2001-04)	85
7.	Lacey Novak (2003-06)	84
	Stacy Leeper (2001-04)	84
9.	Kayla Morrison (2014-17)	83
	Liana Salazar (2011-15)	83
	Kim Boyer (2006-09)	83
	Monica Dolinsky (2006-09)	83
	Jessica Bush (2005-08)	83
	Afton Sauer (2004-07)	83
	Jessica Smith (2002-05)	83

GAMES STARTED (FIELD)

No.	Player	Games
1.	Kayla Morrison (2014-17)	83
	Estelle Johnson (2006-09)	83
	Afton Sauer (2004-07)	83
4.	Liana Salazar (2011-15)	82
	Whitney Berry (2009-12)	82
	Shelby Williamson (2009-12)	82
	Jessica Bush (2005-08)	82
	Holly Gault (2003-06)	82
9.	Taylor Estrada (2013-16)	80
10.	Caroline Smith (2002-05)	79
11.	Jamie Fletcher (2011-14)	76
12.	Monica Dolinsky (2006-09)	75
	Amy Geha (2001-04)	75
	Jackie Dowell (1995-98)	75

MINUTES PLAYED (FIELD)*

No.	Player	Minutes
1.	Estelle Johnson (2006-09)	7,470
2.	Afton Sauer (2004-07)	7,459
3.	Kayla Morrison (2014-17)	7,368
4.	Shelby Williamson (2009-12)	7,232
5.	Liana Salazar (2011-15)	6,933
6.	Whitney Berry (2009-12)	6,739
7.	Taylor Estrada (2013-16)	6,578
8.	Missy Geha (2005-08)	6,416
9.	Jamie Fletcher (2011-14)	6,337
10.	Jessica Bush (2005-08)	6,307

* Minutes played became an official stat in 2004

GAMES PLAYED (KEEPERS)

No.	Player	Games
1.	Meghan Miller (2001-04)	88
2.	Julie Hanley (2005-09)	65
3.	Kaitlyn Stroud (2010-14)	63
4.	Maddie Dobyns (2014-Present)	60
5.	Kat Liebetrau (2009-12)	54

SAVES

No.	Player	Saves
1.	Jen Fecke (1996-98)	375
2.	Meghan Miller (2001-04)	362
3.	Kaitlyn Stroud (2010-2014)	281
4.	Kat Liebetrau (2009-12)	228
	Julie Hanley (2005-09)	228

GOALS AGAINST AVG. (MIN. 2,000 MIN.)

No.	Player	GAA
1.	Meghan Miller (2001-04) (85 GA, 7,836 min.)	0.98
2.	Maddie Dobyns (2014-17) (64 GA, 5,427 min.)	1.06
3.	Kaitlyn Stroud (2010-14) (75 GA, 5,582 min.)	1.21
4.	Julie Hanley (2005-09) (81 GA, 5,515 min.)	1.32
5.	Colleen Quinn (2004-07) (44 GA, 2,923 min.)	1.35

SAVE PERCENTAGE (MIN. 100 SHOTS FACED)

No.	Player	Save Pct.
1.	Betsy Pollard (1996-99) (29 GA, 127 saves)	.814
2.	Meghan Miller (2001-04) (85 GA, 362 saves)	.810
3.	Kaitlyn Stroud (2010-14) (75 GA, 281 saves)	.789
4.	Colleen Quinn (2004-07) (44 GA, 157 saves)	.781
5.	Jen Fecke (1996-98) (110 GA, 375 saves)	.773

SHUTOUTS

No.	Player	Shutouts
1.	Meghan Miller (2001-04)	28
2.	Julie Hanley (2005-09)	16
3.	Maddie Dobyns (2014-17)	14
4.	Kaitlyn Stroud (2010-14)	13
5.	Kat Liebetrau (2009-12)	12

WINS

No.	Player	Wins
1.	Meghan Miller (2001-04)	60
2.	Julie Hanley (2005-09)	36
3.	Kaitlyn Stroud (2010-14)	32
4.	Maddie Dobyns (2014-17)	29
5.	Kat Liebetrau (2009-12)	23

THE LAST TIME...

TEAM

Home Win.....	1-0 vs. Iowa State, Sept. 29, 2018
Home Loss.....	1-2 vs. Oklahoma State, Sept. 23, 2018
Home Tie.....	1-1 vs. Oklahoma State, Oct. 9, 2016
Away Win.....	3-1 at Oklahoma, Oct. 20, 2017
Away Loss.....	0-3 at Texas A&M, Sept. 16, 2018
Away Tie.....	0-0 (2 OT) at Cincinnati, Sept. 6, 2018
Neutral Win.....	3-0 vs. Oregon State, Aug. 24, 2018
Neutral Loss.....	0-2 vs. North Carolina, Nov. 18, 2016
Neutral Tie.....	1-1 (2 OT) vs. Oregon, Aug. 26, 2018
OT Win.....	2-1 (2OT) vs. Oklahoma, Sept. 21, 2018
OT Loss.....	0-1 (2OT) at Nebraska, Sept. 2, 2016
Played 2 OTs.....	0-0 (2OT) at Cincinnati, Sept. 6, 2018
Big 12 Win.....	1-0 vs. Iowa State, Sept. 29, 2018
Big 12 Loss.....	1-2 vs. Oklahoma State, Sept. 23, 2018
Big 12 Tie.....	1-1 at Texas Tech, Sept. 24, 2017
Win over Top-25 team.....	1-0 vs. #25 Butler, Sept. 2, 2018
Win over Top-10 team.....	2-1 vs. #9 Texas, Oct. 13, 2017
Scored 0 Goals.....	at Texas A&M, Sept. 16, 2018
Scored 1 Goal.....	vs. Iowa State, Sept. 29, 2018
Scored 2 Goals.....	vs. Oklahoma, Sept. 21, 2018
Scored 3 Goals.....	vs. Saint Louis, Sept. 14, 2018
Scored 4 Goals.....	vs. Iowa State, Oct. 4, 2015
Score 5+ Goals.....	5 vs. North Colorado, Oct. 26, 2012
Allowed 0 Goals.....	vs. Iowa State, Sept. 29, 2018
Allowed 1 Goal.....	vs. Oklahoma, Sept. 21, 2018
Allowed 2 Goals.....	vs. Oklahoma State, Sept. 23, 2018
Allowed 3 Goals.....	at Texas A&M, Sept. 16, 2018
Allowed 4 Goals.....	at Arizona State, Sept. 8, 2013
Allowed 5+ Goals.....	5 vs. Texas A&M, Sept. 10, 2017
Amassed 20+ Shots.....	21 vs. Oklahoma State, Sept. 23, 2018
Amassed 30+ Shots.....	35 vs. Iowa State, Oct. 24, 2014
Allowed 20+ Shots.....	(27) TCU, Nov. 1, 2017
Allowed 30+ Shots.....	(33) Texas, Nov. 5, 2004
Amassed 10+ Shots on Goal.....	10 at Oklahoma, Oct. 20, 2017
Amassed 15+ Shots on Goal.....	15 vs. Iowa State, Oct. 24, 2014
Allowed 10+ Shots on Goal.....	11 by BYU, Sept. 18, 2017
Allowed 15+ Shots on Goal.....	20 by Georgia, Aug. 29, 2010
Amassed 10+ Corner Kicks.....	10 at Iowa State, Sept. 29, 2017
Allowed 10+ Corner Kicks.....	12 vs. TCU, Nov. 1, 2017
Called for 15+ Fouls.....	17 vs. TCU, Nov. 1, 2017
Called for 25+ Fouls.....	25 vs. Oklahoma State, Oct. 9, 1998
Opponent Called for 15+ Fouls.....	(17) Texas Tech, Sept. 24, 2017
Opponent Called for 25+ Fouls.....	(27) Oklahoma State, Oct. 9, 2016
Scored 1 Penalty Kick.....	at Utah, Sept. 15, 2017
Scored 2 Penalty Kicks.....	vs. Texas Tech, Sept. 23, 2016
Allowed 1 Penalty Kick.....	vs. BYU, Sept. 18, 2017
Allowed 2 Penalty Kicks.....	Oral Roberts, Sept. 27, 2009

INDIVIDUAL

Hat Trick.....	Grace Hagan vs. Saint Louis (Sept. 14, 2018)
Multi-Goal Match.....	(3) Grace Hagan vs. Saint Louis (Sept. 14, 2018)
2 Assists.....	Ceri Holland vs. Saint Louis (Sept. 14, 2018)
3 Assists.....	Whitney Berry vs. Texas (Sept. 30, 2011)
3 Points (Goal+Assist).....	Katie McClure vs. Oregon State (Aug. 24, 2018)
5+ Points.....	(6) Grace Hagan vs. Saint Louis (Sept. 14, 2018)
8+ Shots.....	(8) Grace Hagan at Cincinnati (Sept. 6, 2018)
10+ Shots.....	(12) Caroline Smith vs. Missouri (Oct. 28, 2005)
5+ Shots on Goal.....	(5) Grace Hagan vs. Saint Louis (Sept. 14, 2018)
Scored Penalty Kick.....	Grace Hagan at Utah (Sept. 15, 2017)
Missed Penalty Kick.....	Liana Salazar vs. Texas Tech (Nov. 8, 2015)
10+ Saves.....	(11) Kaitlyn Stroud vs. Oklahoma (Nov. 1, 2013)
Shutout.....	Sarah Peters vs. Iowa State (Sept. 29, 2018)
Red Card.....	Hannah Lukinac at TCU (Sept. 22, 2017)

INDIVIDUAL OPPONENT

Hat Trick.....	Anna Canniglia, Nebraska (Oct. 23, 2009)
Multi-Goal Match.....	(2) Nadia Gomes, BYU (Sept. 18, 2017)
2 Assists.....	Carla Portillo, West Virginia (Oct. 27, 2017)
3+ Assists.....	(3) Kristen Kopp, Texas A&M (Sept. 13, 1996)
3 Points.....	Ally Watt, Texas A&M (Sept. 16, 2018)
5+ Points.....	(5) Amanda Hill, West Virginia (Oct. 16, 2015)
8+ Shots.....	(8) Nadia Gomes, BYU (Sept. 18, 2017)
10+ Shots.....	(13) Courtney Saunders, Baylor (Oct. 2, 1998)
5+ Shots on Goal.....	(5) Cameron Tucker, BYU (Sept. 18, 2017)
Scored Penalty Kick.....	Nadia Gomes, BYU (Sept. 18, 2017)
Missed Penalty Kick.....	Paula Leblic, Oregon State (Aug. 27, 2017)
10+ Saves.....	(13) Andrea Swanson, Iowa State (Oct. 24, 2014)
Shutout.....	Cosette Morche, Texas A&M (Sept. 16, 2018)
Red Card.....	Kassidie Stade, Oklahoma (Nov. 1, 2013)

BOX SCORES

1

KANSAS 1, #18 PEPPERDINE 0

AUG. 17, 2018 | LAWRENCE, KAN. | ROCK CHALK PARK



Pepperdine (0-1-0) vs.
Kansas (1-0-0)
Date: Aug 17, 2018 • Attendance: 557
Weather: Clear, 85F, Wind N 7mph

Pepperdine	Sh	SO	G	A	Fo	Min
gk 1 CLEVELY, Zoe	-	-	-	-	-	90
d 2 HARRISON, Hailey	-	-	-	-	-	86
m 3 MERRILL, Courtney	-	-	-	-	-	47
m 6 SETTLES, Christine	1	-	-	-	-	90
m 7 BYRNE, Katy	-	-	-	-	-	40
m 9 ANDERSON, Joelle	2	-	-	-	-	75
f 11 WELCH, Brie	1	1	-	-	-	63
d 12 MAEMONE, Michelle	1	1	-	-	-	90
d 15 THOMAS, Danielle	1	-	-	-	-	90
d 18 SAMPLE, Emily	1	-	-	-	-	90
m 24 STAMBERG, Hailey	-	-	-	-	-	60
Substitutes --						
5 ZENNER, Brooke	-	-	-	-	-	9
8 NELSON, Isabel	-	-	-	-	-	2
10 REYES, Calista	1	-	-	-	-	27
14 MORRIS, Tara	-	-	-	-	-	66
16 GAYNOR, Chloe	-	-	-	-	-	9
17 PACKER, Olivia	-	-	-	-	-	9
22 MCFARLAND, Leyla	-	-	-	-	-	27
27 LEWIS, Nicolette	-	-	-	-	-	13
30 ISHIKAWA, Laura	-	-	-	-	-	8
Totals	8	2	0	0	6	

# Goalkeepers	Min	GA	Saves
1 CLEVELY, Zoe	90:00	1	1

Shots by period	1	2	Total
Pepperdine	4	4	8
Kansas	2	4	6

Corner kicks	1	2	Total
Pepperdine	3	2	5
Kansas	2	0	2

Scoring summary:					
No.	Time	Team	Goal scorer	Assist	Description
1.	60:05	KU	McClure, Katie (1)	(unassisted)	turnover at midfield taken by 12 to goal a in

Cautions and ejections:

Win-Peters, Sarah (1-0-0). Loss-CLEVELY, Zoe (0-1-0).
Stadium: Rock Chalk Park

Officials: Referee: Michael Lavergne; Asst. Referee: Gregorio Garza; Chris Gordon;
Alt. Official: Tony Gulliano; Timekeeper: Krysti Cole; Scorer: Brad Gilbert;
Offsides: Pepperdine 3, Kansas 5.

Goals by period	1	2	Total
Pepperdine	0	0	0
Kansas	0	1	1

Kansas	Sh	SO	G	A	Fo	Min
gk 00 Peters, Sarah	-	-	-	-	-	90
m 2 Young, Kaycie	1	-	-	-	-	76
d 6 Hansen, Kaela	-	-	-	-	-	67
d 9 Meador, Madison	-	-	-	-	-	90
f 12 McClure, Katie	2	2	1	-	-	63
m 15 Holland, Ceri	-	-	-	-	-	68
d 21 Cavalcante, Isabella	-	-	-	-	-	55
f 25 Hagan, Grace	-	-	-	-	-	90
d 26 Merrick, Addisyn	-	-	-	-	-	60
d 27 Maierhofer, Sophie	-	-	-	-	-	27
m 28 Amos, Bri	-	-	-	-	-	26
Substitutes --						
8 Courtney, Anna	-	-	-	-	-	23
10 Melugin, Miriam	-	-	-	-	-	54
13 Castro, Kathryn	-	-	-	-	-	14
14 Barnett, Samantha	-	-	-	-	-	15
17 Christie, Taylor	3	-	-	-	-	34
23 Wiltgen, Grace	-	-	-	-	-	66
24 Reina, Elise	-	-	-	-	-	64
Totals	6	2	1	0	5	

# Goalkeepers	Min	GA	Saves
00 Peters, Sarah	90:00	0	2

Saves by period	1	2	Total
Pepperdine	1	0	1
Kansas	1	1	2

Fouls	1	2	Total
Pepperdine	6	0	6
Kansas	4	1	5

2

KANSAS 3, SOUTH DAKOTA STATE 0

AUG. 19, 2018 | LAWRENCE, KAN. | ROCK CHALK PARK



South Dakota State (0-2-0) vs.
Kansas (2-0-0)
Date: Aug 19, 2018 • Attendance: 213
Weather: Rain 74F, Calm winds

South Dakota State	Sh	SO	G	A	Fo	Min
gk 1 Maggie Smither	-	-	-	-	-	81
m 2 Kyla Nelson	1	-	-	-	-	66
d 4 Kaitlin Zabel	1	1	-	-	-	90
m 7 Carina McLennan	-	-	-	-	-	57
f 11 Leah Manuleleua	1	-	-	-	-	64
m 12 Darien Poelstra	1	-	-	-	-	53
d 14 Hannah Evans	-	-	-	-	-	37
f 20 Karlee Manding	-	-	-	-	-	69
d 22 Alexa Hepner	-	-	-	-	-	90
d 23 Annie Williams	1	1	-	-	-	80
f 24 Bianca Madonia	-	-	-	-	-	45
Substitutes --						
00 Hailee Fischer	-	-	-	-	-	9
3 Rachel Preston	-	-	-	-	-	23
5 Rachel Hewitt	1	-	-	-	-	24
6 Kelsi Wipf	-	-	-	-	-	31
9 Cecelia Limongi	-	-	-	-	-	7
10 Sunira Dunagan	-	-	-	-	-	50
13 Madison Chapman	-	-	-	-	-	10
16 Marisa Schulz	-	-	-	-	-	32
17 Aile Zueger	1	-	-	-	-	17
18 Stephanie Dashiell	-	-	-	-	-	9
19 Shayna Stubbs	-	-	-	-	-	18
21 Abigail Kastens	-	-	-	-	-	27
Totals	7	2	0	0	5	

# Goalkeepers	Min	GA	Saves
1 Maggie Smither	81:41	3	4
00 Hailee Fischer	8:19	0	0

Shots by period	1	2	Total
South Dakota State	6	1	7
Kansas	16	8	24

Corner kicks	1	2	Total
South Dakota State	2	1	3
Kansas	5	0	5

Scoring summary:					
No.	Time	Team	Goal scorer	Assist	Description
1.	16:36	KU	Meador, Madison (1)	McClure, Katie	Headed in off corner
2.	47:38	KU	McClure, Katie (2)	Hagan, Grace	Passing combination with 12 shooting in a post.
3.	75:34	KU	Christie, Taylor (1)	(unassisted)	17 beat defender and took it 40 yards to

Cautions and ejections:

Win-Peters, Sarah (2-0-0). Loss-Maggie Smither (0-2-0).
Stadium: Rock Chalk Park

Officials: Referee: Mark Kadleck; Asst. Referee: Emily Fletcher; Forrest Ambrose;
Alt. Official: Aaron Rench; Timekeeper: Krysti Cole; Scorer: Brad Gilbert;
Offsides: South Dakota State 2, Kansas 1.

Goals by period	1	2	Total
South Dakota State	0	0	0
Kansas	1	2	3

Kansas	Sh	SO	G	A	Fo	Min
gk 00 Peters, Sarah	-	-	-	-	-	90
m 2 Young, Kaycie	2	-	-	-	-	57
d 6 Hansen, Kaela	-	-	-	-	-	80
d 9 Meador, Madison	3	1	1	-	-	90
m 10 Melugin, Miriam	2	-	-	-	-	59
f 12 McClure, Katie	2	1	1	1	-	51
m 15 Holland, Ceri	1	1	-	-	-	69
d 23 Wiltgen, Grace	-	-	-	-	-	26
d 24 Reina, Elise	1	-	-	-	-	51
f 25 Hagan, Grace	5	2	-	-	-	58
d 26 Merrick, Addisyn	-	-	-	-	-	90
Substitutes --						
3 Swaby-Wallerson, Ma	-	-	-	-	-	10
4 Lane, Kaley	-	-	-	-	-	9
7 Hall, Avery	-	-	-	-	-	21
8 Courtney, Anna	2	-	-	-	-	25
13 Castro, Kathryn	1	-	-	-	-	39
14 Barnett, Samantha	-	-	-	-	-	23
16 Bradley, Italia	-	-	-	-	-	10
17 Christie, Taylor	4	2	1	-	-	31
21 Cavalcante, Isabella	-	-	-	-	-	55
22 Duggan, Mandi	1	-	-	-	-	9
28 Amos, Bri	-	-	-	-	-	39
Totals	24	7	3	2	11	

# Goalkeepers	Min	GA	Saves
00 Peters, Sarah	90:00	0	2

Saves by period	1	2	Total
South Dakota State	4	0	4
Kansas	2	0	2

Fouls	1	2	Total
South Dakota State	1	4	5
Kansas	4	7	11

3

#18 KANSAS 3, OREGON STATE 0

AUG. 24, 2018 | LINCOLN, NEB. | HIBNER STADIUM



Kansas (3-0) vs.
Oregon State (0-3)
Date: Aug 24, 2018 • Attendance: 152
Weather: 90 degrees, sunny, light wind

Kansas	Sh	SO	G	A	Fo	Min
gk 00 Peters, Sarah	-	-	-	-	-	90
mf 2 Young, Kaycie	-	-	-	-	-	57
d 6 Hansen, Kaela	-	-	-	-	-	51
d 9 Meador, Madison	-	-	-	-	-	90
mf 10 Melugin, Miriam	1	-	-	-	-	67
f 12 McClure, Katie	2	1	1	1	-	46
mf 15 Holland, Ceri	1	1	-	-	-	52
d 21 Cavalcante, Isabella	1	1	-	-	-	69
d 24 Reina, Elise	-	-	-	-	-	54
f 25 Hagan, Grace	3	-	-	-	-	51
d 26 Merrick, Addisyn	-	-	-	-	-	79
Substitutes --						
3 Swaby-Wallerson, Ma	-	-	-	-	-	11
4 Lane, Kaley	-	-	-	-	-	11
5 Pesek, Olivia	-	-	-	-	-	11
7 Hall, Avery	-	-	-	-	-	23
8 Courtney, Anna	2	1	-	-	-	29
13 Castro, Kathryn	-	-	-	-	-	24
14 Barnett, Samantha	1	-	-	-	-	27
16 Bradley, Italia	-	-	-	-	-	19
17 Christie, Taylor	2	2	2	-	-	36
22 Duggan, Mandi	-	-	-	-	-	9
23 Wiltgen, Grace	-	-	-	-	-	9
28 Amos, Bri	-	-	-	-	-	25
Totals	13	6	3	2	11	

# Goalkeepers	Min	GA	Saves
00 Peters, Sarah	90:00	0	0

Shots by period	1	2	Total
Kansas	8	5	13
Oregon State	0	2	2

Corner kicks	1	2	Total
Kansas	1	0	1
Oregon State	0	1	1

Scoring summary:					
No.	Time	Team	Goal scorer	Assist	Description
1.	16:57	KU	McClure, Katie (3)	Reina, Elise	Cross to middle of field
2.	27:42	KU	Christie, Taylor (2)	McClure, Katie	Chip shot from cross
3.	39:06	KU	Christie, Taylor (3)	(unassisted)	Steal from Beavers, 1-on-1

Cautions and ejections:

Win-Peters, Sarah (3-0). Loss-Bridgette Skiba (0-3-3).
Stadium: Hibner Stadium

Officials: Referee: Jason Francois; Asst. Referee: Michael Barton; Sarah Curry;
Alt. Official: Wayne Wilson; Timekeeper: Juan Rico; Scorer: Connor Stange;
Offsides: Kansas 1, Oregon State 2.

Goals by period	1	2	Total
Kansas	3	0	3
Oregon State	0	0	0

Oregon State	Sh	SO	G	A	Fo	Min
gk 0 Bridgette Skiba	-	-	-	-	-	90
d 3 Taylie Liddell	-	-	-	-	-	90
f 6 Toni Malone	1	-	-	-	-	62
d 7 Helena Brown	-	-	-	-	-	72
d 9 Ashleigh Fonsen	-	-	-	-	-	66
d 10 Kate Evans	-	-	-	-	-	44
f 11 Shea O'Connor	-	-	-	-	-	48
mf 17 Allison Pentuso	-	-	-	-	-	77
mf 22 Sydney Studer	-	-	-	-	-	83
mf 25 Emery Wallerich	1	-	-	-	-	56
d 28 Jessi Witherington	-	-	-	-	-	68
Substitutes --						
2 Kaileen Fried	-	-	-	-	-	53
5 Gabrielle Hackbarth	-	-	-	-	-	40
12 Diana Santiago	-	-	-	-	-	55
13 McKenzie Weimert	-	-	-	-	-	45
14 Taylor Lemmond	-	-	-	-	-	42
Totals	2	0	0	0	9	

# Goalkeepers	Min	GA	Saves
0 Bridgette Skiba	90:00	3	3

Saves by period	1	2	Total
Kansas	0	0	0
Oregon State	1	2	3

BOX SCORES

5

#19 KANSAS 2, UTAH 1 (20T)

AUG. 31, 2018 | LAWRENCE, KAN. | ROCK CHALK PARK



Utah (1-2-1) vs. Kansas (4-0-1)
Date: Aug 31, 2018 • Attendance: 665
Weather: Partly cloudy, 87F, Wind SE 15 mph

Utah

Po #	Player	Sh	SO	G	A	Fo	Min
gk 1	NELSON, Carly	-	-	-	-	-	106
f 00	CHRISTENSEN, Maka	-	-	-	-	-	45
d 2	LEACHMAN, Tavia	1	-	-	-	-	106
m 5	CACCIACARNE, Hayle	1	-	-	-	-	96
d 9	GWERTDER, Alelea	-	-	-	-	-	106
m 10	LOPEZ, Demi	-	-	-	-	-	33
d 12	DAUGIRDA, Holly	1	-	-	-	-	92
m 14	VAN DER VEEN, Paol	2	-	-	-	-	99
d 17	STODDEN, Halley	-	-	-	-	-	82
f 19	SKOLMOSKI, Hailey	6	1	1	-	-	88
d 24	RUSHLOW, Alexis	1	1	-	-	-	60
-- Substitutes --							
3	BORGES, Lulu	-	-	-	-	-	47
4	HIXSON, Jessica	-	-	-	-	-	29
11	FLOM, Max	-	-	-	-	-	47
20	THORNTON, Tatum	-	-	-	-	-	53
21	DUNN, Ireland	-	-	-	-	-	71
22	ESCOBEDO, Anna	-	-	-	-	-	8
Totals							

#	Goalkeepers	Min	GA	Saves
1	NELSON, Carly	106:11	2	5

Shots by period		1	2	OT	O2	Total
Utah		5	4	1	2	12
Kansas		3	9	3	1	16

Corner kicks		1	2	OT	O2	Total
Utah		2	1	1	1	5
Kansas		3	1	0	0	4

Scoring summary:

No.	Time	Team	Goal scorer	Assist	Description
1.	85:40	UTAH	SKOLMOSKI, Hailey (1)	(unassisted)	headed in off goalie clearance
2.	86:16	KU	McClure, Katie (4)	Young, Kaycie	shot in from 20 yards out
3.	106:11	KU	McClure, Katie (5)	Holland, Ceri	15 pass to 12, who shot it in far post

Cautions and ejections:
YC-UTAH #11 (88:51)

Win-Peters, Sarah (4-0-2). Loss-NELSON, Carly (1-2-1).
Stadium: Rock Chalk Park
Officials: Referee: Brian Miller; Asst. Referee: Phillip Gomez; Phil Ochsner;
Alt. Official: Rey Ramirez; Timekeeper: Erin Penning; Scorer: Brad Gilbert;
Offsides: Utah 1, Kansas 4.

6

#19 KANSAS 1, #25 BUTLER 0

SEPT. 2, 2018 | LAWRENCE, KAN. | ROCK CHALK PARK



Butler (4-1-0) vs. Kansas (5-0-1)
Date: Sep 02, 2018 • Attendance: 754
Weather: Mostly cloudy, 83F, Wind SE 8 mph

Butler

Po #	Player	Sh	SO	G	A	Fo	Min
g	00 LUEDTKE, Hannah	-	-	-	-	-	45
m	2 SODERSTROM, Katie	-	-	-	-	-	83
f	4 MONAGHAN, Paige	1	-	-	-	-	90
d	5 KOWALSKI, Amanda	-	-	-	-	-	38
d	6 LEONARD, Julia	-	-	-	-	-	90
f	7 SAVICH, Anja	1	-	-	-	-	73
f	12 STELBASKY, Halle	2	1	-	-	-	90
m	17 RAPADUSKI, Amanda	-	-	-	-	-	59
d	25 TOTH, Madison	-	-	-	-	-	90
d	27 SCHMIDT, Annika	-	-	-	-	-	90
f	29 BLACHA, Cassidy	-	-	-	-	-	71
-- Substitutes --							
8	KLOOSTERMAN, Mor	2	1	-	-	-	66
14	MILLER, Macy	-	-	-	-	-	14
20	BLACK, Payton	-	-	-	-	-	39
30	DISARCINA, Caitlyn	-	-	-	-	-	7
99	DOEGE, Leonie	-	-	-	-	-	45
Totals							

#	Goalkeepers	Min	GA	Saves
00	LUEDTKE, Hannah	45:00	0	1
99	DOEGE, Leonie	45:00	1	2

Shots by period		1	2	Total
Butler		1	5	6
Kansas		3	7	10

Corner kicks		1	2	Total
Butler		0	2	2
Kansas		0	2	2

Scoring summary:

No.	Time	Team	Goal scorer	Assist	Description
1.	84:27	KU	Reina, Elise (1)	McClure, Katie	Shot in off corner kick.

Cautions and ejections:
YC-BUTLER #4 (59:15); YC-KU #12 (87:23)

Win-Peters, Sarah (5-0-1). Loss-DOEGE, Leonie (0-1-0).
Stadium: Rock Chalk Park
Officials: Referee: Daniel Radford; Asst. Referee: Reza Namavar; Victor Greer;
Alt. Official: Marc Tiemann; Timekeeper: Krystl Cole; Scorer: Brad Gilbert;
Offsides: Butler 0, Kansas 1.

7

#16 KANSAS 0, CINCINNATI 0 (20T)

SEPT. 6, 2018 | CINCINNATI, OHIO | GETTLER STADIUM



Kansas (5-0-2) vs. Cincinnati (3-2-1)
Date: Sep 06, 2018 • Attendance: 197
Weather: high 70s; intermittent rain and cloudy

Kansas

Po #	Player	Sh	SO	G	A	Fo	Min
gk 00	Peters, Sarah	-	-	-	-	-	110
m 2	Young, Kaycie	2	-	-	-	-	102
d 6	Hansen, Kaela	1	-	-	-	-	110
d 9	Meador, Madison	1	-	-	-	-	110
m 10	Melugin, Miriam	-	-	-	-	-	100
f 12	McClure, Katie	3	2	-	-	-	75
m 15	Holland, Ceri	3	-	-	-	-	92
d 21	Cavalcante, Isabella	-	-	-	-	-	15
d 24	Reina, Elise	-	-	-	-	-	101
m 25	Hagan, Grace	8	3	-	-	-	93
d 26	Merrick, Addisyn	1	1	-	-	-	110
-- Substitutes --							
13	Castro, Kathryn	-	-	-	-	-	28
14	Barnett, Samantha	-	-	-	-	-	17
17	Christie, Taylor	-	-	-	-	-	43
19	Eliasdottir, Eva	-	-	-	-	-	37
23	Wiltgen, Grace	-	-	-	-	-	57
28	Amos, Bri	-	-	-	-	-	9
Totals							

#	Goalkeepers	Min	GA	Saves
00	Peters, Sarah	110:00	0	1

Shots by period		1	2	OT	O2	Total
Kansas		5	11	2	1	19
Cincinnati		3	4	0	0	7

Corner kicks		1	2	OT	O2	Total
Kansas		2	1	1	3	7
Cincinnati		1	1	0	0	2

Scoring summary:

No.	Time	Team	Goal scorer	Assist	Description
No goals scored.					

Cautions and ejections:
YC-KU #28 (78:01)

Kansas-Peters, Sarah (5-0-2). Cincinnati-EUSTAQUIO, Claudia (1-1-1).
Stadium: Gettler Stadium
Officials: Referee: Michael Kinder; Asst. Referee: Jeff Swartzel; Brad Kowler;
Alt. Official: Mikael Lundqvist; Scorer: UC SID;
Offsides: Kansas 3, Cincinnati 4.
Game start delayed 45 mins due to lighting

8

#18 KANSAS 3, SAINT LOUIS 2

SEPT. 14, 2018 | LAWRENCE, KAN. | ROCK CHALK PARK



Saint Louis (4-3-1) vs. Kansas (6-0-2)
Date: Sep 14, 2018 • Attendance: 661
Weather: Clear, 85F, Wind SE 6 mph

Saint Louis

Po #	Player	Sh	SO	G	A	Fo	Min
gk 18	SILVERMAN, Olivia	-	-	-	-	-	90
d 2	KLUG, Aili	-	-	-	-	-	90
f 3	POKORNY, Maddie	1	-	-	-	-	76
m 5	REIMER, Courtney	-	-	-	-	-	79
f 7	SEITZER, Alyssa	2	1	1	-	-	83
d 8	FARLEY, Emma	-	-	-	-	-	90
m 11	FRIEDRICH, Hannah	2	2	1	1	-	76
m 14	LAVELLE, Evie	-	-	-	-	-	57
d 15	PETIT, Olivia	-	-	-	-	-	84
d 19	PALAZZOLO, Isabella	-	-	-	-	-	82
d 26	BURKE, Isabel	-	-	-	-	-	90
-- Substitutes --							
9	NEWSOM, Kassie	-	-	-	-	-	10
16	SANDS, Lindsay	-	-	-	-	-	37
20	COPELAND, Annabell	1	-	-	-	-	13
24	COX, Haley	-	-	-	-	-	35
Totals							

#	Goalkeepers	Min	GA	Saves
18	SILVERMAN, Olivia	90:00	3	5

Shots by period		1	2	Total
Saint Louis		2	4	6
Kansas		3	8	11

Corner kicks		1	2	Total
Saint Louis		1	1	2
Kansas		1	4	5

Scoring summary:

No.	Time	Team	Goal scorer	Assist	Description
1.	18:00	SLU	SEITZER, Alyssa (5)	FRIEDRICH, Hannah	Passing combo shot in by 7 from 10 yard
2.	19:02	SLU	FRIEDRICH, Hannah (4)	LAVELLE, Evie	Cross to top of box shot in from 18
3.	20:56	KU	Hagan, Grace (1)	Holland, Ceri	Headed in off free kick
4.	30:51	KU	Hagan, Grace (2)	(unassisted)	Shot in from top of box.
5.	52:12	KU	Hagan, Grace (3)	Holland, Ceri	Shot in through keepers legs from 20 yard

Cautions and ejections:
Win-Peters, Sarah (6-0-2). Loss-SILVERMAN, Olivia (4-3-1).
Stadium: Rock Chalk Park
Officials: Referee: Chris Strickland; Asst. Referee: Eric Proctor; Emmanuel Darriba;
Alt. Official: Blake Fraley; Timekeeper: Krystl Cole; Scorer: Brad Gilbert;
Offsides: Saint Louis 0, Kansas 2.

BOX SCORES

9 #4 TEXAS A&M 3, #18 KANSAS 0 SEPT. 16, 2018 | COLLEGE STATION, TEXAS | ELLIS FIELD



Kansas (6-1-2) vs. Texas A&M (10-0-0)
Date: Sep 16, 2018 • Attendance: 2226
Weather: 96, partly cloudy, humid, wind SSE 5-7 MPH

Goals by period	1	2	Total
Kansas	0	0	0
Texas A&M	1	2	3

Kansas Po #	Player	Sh	SO	G	A	Fo
gk 00	Peters, Sarah	-	-	-	-	-
m 2	Young, Kaycie	1	-	-	-	-
d 6	Hansen, Kaela	-	-	-	-	-
d 9	Meador, Madison	-	-	-	-	-
m 10	Melugin, Miriam	-	-	-	-	-
f 12	McClure, Katie	4	2	-	-	-
m 15	Holland, Ceri	1	-	-	-	-
d 19	Eliasdottrir, Eva	1	-	-	-	-
d 24	Reina, Elise	-	-	-	-	-
f 25	Hagan, Grace	4	-	-	-	-
d 26	Merrick, Addisyn	-	-	-	-	-
-- Substitutes --						
4	Lane, Kailey	-	-	-	-	-
7	Hall, Avery	-	-	-	-	-
8	Courtney, Anna	-	-	-	-	-
13	Castro, Kathryn	-	-	-	-	-
14	Barnett, Samantha	1	-	-	-	-
16	Bradley, Italia	-	-	-	-	-
17	Christie, Taylor	-	-	-	-	-
22	Duggan, Mandi	-	-	-	-	-
23	Wiltgen, Grace	-	-	-	-	-
28	Amos, Bri	-	-	-	-	-
Totals		12	2	0	0	11

Texas A&M Po #	Player	Sh	SO	G	A	Fo
gk 0	Morche, Cosette	-	-	-	-	-
lf 1	Watt, Ally	3	2	1	1	-
lb 4	Ritchie, Kendall	1	1	-	-	-
dm 9	Piper, Grace	2	1	-	-	-
ro 10	Ziemer, Tera	-	-	-	-	-
lrm14	Lopez, Jimena	-	-	-	-	-
lam18	McCain, Addie	1	1	1	-	-
ra 20	Haldorsdottrir, Asdis	2	-	1	-	-
rf 22	Smith, Rheagan	-	-	-	-	-
rb 27	Hill, Jordan	-	-	1	-	-
cb 99	Alston, Briana	-	-	-	-	-
-- Substitutes --						
2	Bates, Emily	-	-	-	-	-
5	Crabtree, Brittany	-	-	-	-	-
6	Hajdu, Kate	-	-	-	-	-
16	Kolb, Macie	-	-	-	-	-
17	Arrieta, Cienna	1	1	1	-	-
19	Bates, Kendall	-	-	-	-	-
24	Walton, Callyn	-	-	-	-	-
55	Cooper, Abby Grace	2	2	1	-	-
Totals		12	8	3	4	9

#	Goalkeepers	Min	GA	Saves
00	Peters, Sarah	90:00	3	4
TM	TEAM	0:00	0	1

#	Goalkeepers	Min	GA	Saves
0	Morche, Cosette	90:00	0	2

Shots by period	1	2	Total
Kansas	6	6	12
Texas A&M	7	5	12

Saves by period	1	2	Total
Kansas	4	1	5
Texas A&M	1	1	2

Corner kicks	1	2	Total
Kansas	1	1	2
Texas A&M	5	4	9

Fouls	1	2	Total
Kansas	4	7	11
Texas A&M	4	5	9

Scoring summary:

No.	Time	Team	Goal scorer	Assist	Description
1.	38:52	TAMU	Cooper, Abby Grace (1)	Hill, Jordan	shot from 12 yards out, right of keeper
2.	64:44	TAMU	McCain, Addie (3)	Watt, Ally	shot from 22 yards
3.	66:14	TAMU	Watt, Ally (8)	Arrieta, Cienna	Volley from 8 off Haldorsdottrir shot off c bar

Cautions and ejections:

YC-TAMU #17 (43:35); YC-KU #26 (53:23)

Win-Morche, Cosette (10-0-0). Loss-Peters, Sarah (6-1-2).
Stadium: Ellis Field
Officials: Referee: Timothy Debyingh; Asst. Referee: Deleana Quan; Chris Scruggs;
Alt. Official: Diego Blas;

11 #15 OKLAHOMA STATE 2, #24 KANSAS 1 SEPT. 23, 2018 | LAWRENCE, KAN. | ROCK CHALK PARK



Oklahoma State 10-1-0 (2-0-0 Big12) vs. Kansas 7-2-2 (1-1-0 Big 12)
Date: Sep 23, 2018 • Attendance: 832
Weather: Sunny, 75F, Wind SW 7mph

Goals by period	1	2	Total
Oklahoma State	0	2	2
Kansas	0	1	1

Oklahoma State Po #	Player	Sh	SO	G	A	Fo	Min
gk 4	Greenlee, Dani	-	-	-	-	-	45
m 4	Siragusa, Kirsten	-	-	-	-	-	85
m 5	Webb, Hannah	-	-	-	-	-	83
m 6	Yochum, Grace	-	-	-	-	-	90
d 7	Jackson, Ally	-	-	-	-	-	76
m 8	Lenhardt, Julia	-	-	-	-	-	90
f 9	Jones, Jaci	-	-	-	-	-	84
f 14	Zoller, Marlo	3	3	1	-	-	59
f 23	Woodard, Haley	2	1	1	-	-	56
m 24	Gantzer, Claire	-	-	-	-	-	47
d 26	Rodriguez, Kim	-	-	-	1	-	85
-- Substitutes --							
1	Warner, Hannah	-	-	-	-	-	45
11	Olson, Taylor	1	1	-	-	-	28
13	Huddleston, Camy	-	-	-	-	-	43
20	Neville, Grace	-	-	-	-	-	50
29	VanFossen, Rachel	-	-	-	-	-	23
Totals		6	5	2	1	7	

Kansas Po #	Player	Sh	SO	G	A	Fo	Min
gk 00	Peters, Sarah	-	-	-	-	-	90
m 2	Young, Kaycie	1	1	-	-	-	67
d 6	Hansen, Kaela	-	-	-	-	-	73
d 9	Meador, Madison	-	-	-	-	-	73
m 10	Melugin, Miriam	2	1	-	-	-	77
f 12	McClure, Katie	1	-	-	-	-	68
m 15	Holland, Ceri	2	-	-	-	-	78
d 19	Eliasdottrir, Eva	2	-	-	-	-	75
d 24	Reina, Elise	4	1	-	-	-	80
f 25	Hagan, Grace	2	2	1	-	-	79
d 26	Merrick, Addisyn	1	-	-	-	-	90
-- Substitutes --							
4	Lane, Kailey	-	-	-	-	-	7
8	Courtney, Anna	-	-	-	-	-	6
13	Castro, Kathryn	-	-	-	-	-	13
14	Barnett, Samantha	-	-	-	-	-	11
17	Christie, Taylor	1	-	-	-	-	39
23	Wiltgen, Grace	2	1	-	-	-	32
27	Malerhofer, Sophie	1	-	-	-	-	5
28	Amos, Bri	2	-	-	-	-	27
Totals		21	6	1	1	9	

#	Goalkeepers	Min	GA	Saves
4	Greenlee, Dani	45:00	0	2
1	Warner, Hannah	45:00	1	3

#	Goalkeepers	Min	GA	Saves
00	Peters, Sarah	90:00	2	3

Shots by period	1	2	Total
Oklahoma State	2	4	6
Kansas	6	15	21

Saves by period	1	2	Total
Oklahoma State	2	3	5
Kansas	1	2	3

Corner kicks	1	2	Total
Oklahoma State	0	3	3
Kansas	1	8	9

Fouls	1	2	Total
Oklahoma State	3	4	7
Kansas	4	5	9

Scoring summary:

No.	Time	Team	Goal scorer	Assist	Description
1.	47:29	OSU	Woodard, Haley (5)	(unassisted)	Shot in from break away
2.	66:53	OSU	Zoller, Marlo (6)	Rodriguez, Kim	Headed in off free kick
3.	89:47	KU	Hagan, Grace (4)	Reina, Elise	Headed in off corner

Cautions and ejections:

Win-Warner, Hannah (5-0-0). Loss-Peters, Sarah (7-2-2).
Stadium: Rock Chalk Park
Officials: Referee: Corey Rockwell; Asst. Referee: Hayden Oscaño; Aaron Schumacher;
Alt. Official: Bryan Auten; Timekeeper: Krysti Cole; Scorer: Brad Gilbert;
Offsides: Oklahoma State 2, Kansas 0.

10 #24 KANSAS 2, OKLAHOMA 1 (2OT) SEPT. 21, 2018 | LAWRENCE, KAN. | ROCK CHALK PARK



Oklahoma 4-5-1 (0-1-0 Big 12) vs. Kansas 7-1-2 (1-0-0 Big 12)
Date: Sep 21, 2018 • Attendance: 1271
Weather: Cloudy, 66F, Wind SW 9mph

Goals by period	1	2	OT	O2	Total
Oklahoma	1	0	0	0	1
Kansas	0	1	0	1	2

Oklahoma Po #	Player	Sh	SO	G	A	Fo
gk 1	Crone, McKinley	-	-	-	-	-
d 2	Davidson, Halley	-	-	-	-	-
m 6	Reilly, Megan	2	2	-	-	-
m 7	Haivala, Lauren	3	1	-	-	-
f 11	Dao, Kaylee	2	2	1	-	-
d 12	Smith, Olivia	-	-	-	-	-
f 14	Ledbetter, Emma	-	-	-	-	-
d 19	Hobart, Jordan	-	-	-	-	-
d 27	Welch, Paige	-	-	-	-	-
m 28	McMahon, Marissa	-	-	1	-	-
f 29	Rivas, Ivanna	1	-	-	-	-
-- Substitutes --						
4	Molone, Hannah	-	-	-	-	-
9	Thompson, Paige	-	-	-	-	-
18	Thuy, Lauren	-	-	-	-	-
24	Yost, Erika	1	-	-	-	-
74	Parker, Emily	-	-	-	-	-
Totals		9	5	1	1	8

Kansas Po #	Player	Sh	SO	G	A	Fo
gk 00	Peters, Sarah	-	-	-	-	-
m 2	Young, Kaycie	1	-	-	-	-
d 6	Hansen, Kaela	-	-	-	-	-
d 9	Meador, Madison	-	-	-	-	-
m 10	Melugin, Miriam	2	1	1	-	-
f 12	McClure, Katie	2	1	1	-	-
m 15	Holland, Ceri	4	1	-	-	-
d 19	Eliasdottrir, Eva	1	-	-	-	-
d 24	Reina, Elise	3	2	1	-	-
f 25	Hagan, Grace	-	-	-	-	-
d 26	Merrick, Addisyn	-	-	-	-	-
-- Substitutes --						
13	Castro, Kathryn	1	1	-	-	-
14	Barnett, Samantha	-	-	-	-	-
17	Christie, Taylor	3	-	-	-	-
23	Wiltgen, Grace	-	-	-	-	-
27	Malerhofer, Sophie	1	-	-	-	-
28	Amos, Bri	1	-	-	-	-
Totals		19	6	2	2	9

#	Goalkeepers	Min	GA	Saves
1	Crone, McKinley	109:06	2	4

#	Goalkeepers	Min	GA	Saves
00	Peters, Sarah	109:06	1	4

Shots by period	1	2	OT	O2	Total
Oklahoma	2	5	1	1	9
Kansas	6	7	2	4	19

Saves by period	1	2	OT	O2	Total
Oklahoma	1	1	0	2	4
Kansas	0	3	0	1	4

Corner kicks	1	2	OT	O2	Total
Oklahoma	1	2	2	0	5
Kansas	2	2	1	1	6

Fouls	1	2	OT	O2	Total
Oklahoma	5	2	1	0	8
Kansas	3	4	1	1	9

Scoring summary:

No.	Time	Team	Goal scorer	Assist	Description
1.	16:46	OU	Dao, Kaylee (5)	McMahon, Marissa (unassisted)	Headed in on cross.
2.	59:24	KU	Reina, Elise (2)	Eliasdottrir, Eva	Off rebound.
3.	109:06	KU	McClure, Katie (6)	Melugin, Miriam	pass into box tipped by 10 to 12, shot in.

Cautions and ejections:

YC-KU #15 (57:05)
Win-Peters, Sarah (7-1-2). Loss-Crone, McKinley (4-5-1).
Stadium: Rock Chalk Park
Officials: Referee: Chris Calderon; Asst. Referee: Emily Fletcher; Craig Bohner; Alt. Official: Marc Tiemann; Timekeeper: Krysti Cole; Scorer: Brad Gilbert; Offsides: Oklahoma 2, Kansas 4.

12 KANSAS 1, IOWA STATE 0 SEPT. 29, 2018 | LAWRENCE, KAN. | ROCK CHALK PARK



Iowa State 8-2 (0-2-1 Big 12) vs. Kansas 8-2-2 (2-1-0 Big 12)
Date: Sep 29, 2018 • Attendance: 914
Weather: Overcast, 68F, Calm winds

Goals by period	1	2	Total
Iowa State	0	0	0
Kansas	0	1	1

Iowa State Po #	Player	Sh	SO	G	A	Fo	Min
gk 0	Schwichtenberg, D.	-	-	-	-	-	90
m 4	Stell, Emily	-	-	-	-	-	72
d 9	Sullivan, Shealyn	-	-	-	-	-	73
d 13	Daniel, Marin	-	-	-	-	-	90
d 14	Bee, Taylor	-	-	-	-	-	34
d 15	Schultz, McKenna	-	-	-	-	-	90
m 17	Mundt, Merin	1	-	-	-	-	40
f 18	Medelberg, Klasey	1	-	-	-	-	80
f 20	Ginther, Kassi	-	-	-	-	-	64
m 22	Powell, Courtney	1	1	-	-	-	61
d 23	Enga, Jordan	-	-	-	-	-	90
-- Substitutes --							
3	Privertera, Kara						

LAUREN BRESHEARS

SR • Goalkeeper • 5-8 • St. Peters, Mo. • Fort Zumwalt South HS

0



Was forced to sit out the entire 2017 season with a foot injury ... Did not log any minutes in 2016 ... Spent her time in 2015 season as the Jayhawks' No. 2 keeper ... Saw over 83 minutes in goal over three appearances for the Jayhawks in her first season of eligibility in 2015.

	GP-GS	Min	GA	GAAvg	Sv	Sv%	W	L	T	Sho
2015	3-0	83:23	2	2.16	1	.333	0	1	0	0
2016	0-0	0:00	0	0.00	0	.000	0	0	0	0
2017	0-0	0:00	0	0.00	0	.000	0	0	0	0
2018	0-0	0:00	0	0.00	0	.000	0	0	0	0
TOTAL	3-0	83:23	2	2.16	1	.333	0	1	0	0

SARAH PETERS

FR • Goalkeeper • 5-10 • Lee's Summit, Mo. • Lee's Summit North HS

00



In her first 12 collegiate starts, logged six shutouts to go along with 23 saves ... Her six clean sheets are the most ever by a KU freshman ... A three-year letterwinner for Ryan Kelley's Lee's Summit North squad ... Named the Class 4 Missouri Goalkeeper of the Year following her junior year in 2017 ... Also garnered First Team All-State, All-Conference and All-District selections in 2017.

	GP-GS	Min	GA	GAAvg	Sv	Sv%	W	L	T	Sho
2018	12-12	1155:17	10	0.78	23	.697	8	2	2	6
	12-12	1155:17	10	0.78	23	.697	8	2	2	6

REGAN GIBBS

JR • Goalkeeper • 5-9 • Naches, Wash. • West Valley HS

1



Logged only minutes of 2017 in 45-minute outing vs. Texas A&M (9/10) ... Entered 2017 as the No. 2 keeper ... Saw action in six matches as a redshirt freshman in 2016, which included starts in four of those contests ... The Jayhawks' starting keeper in their two 2016 NCAA Tournament matches, allowing two goals, facing 32 shots and making eight saves in over 190 minutes.

	GP-GS	Min	GA	GAAvg	Sv	Sv%	W	L	T	Sho
2016	6-4	446:28	5	1.01	19	.792	1	2	1	1
2017	1-0	45:00	3	6.00	1	.250	0	0	0	0
2018	0-0	0:00	0	0.00	0	.000	0	0	0	0
TOTAL	7-4	491:28	8	1.47	20	.714	1	2	1	1

KAYCIE YOUNG

SR • Midfielder • 5-7 • Castle Rock, Colo. • Rock Canyon HS • Portland

2



Scored first goal in a KU uniform against Oregon (8/26) ... Transferred to KU after appearing in 52 matches from 2014-17 at Portland ... averaged over 83 minutes per game in those 52 matches, which included 51 starts ... As a senior at Rock Canyon HS, was named the Colorado State Gatorade Player of the Year, landed on the NSCAA All-Region Team, earned Continental League Player of the Year honors.

	GP-GS	Min	G	A	Pts	Shot	Sh%	SOG	SOG%	GW	PK-Att
2014	14-14	1175	0	2	2	6	.000	2	.333	0	0-0
2015											
Redshirt Year											
2016	19-19	1579	1	2	4	17	.059	7	.412	0	0-0
2017	19-18	1594	1	1	3	24	.042	8	.333	1	1-1
2018	12-12	937	1	1	3	17	.059	5	.294	0	0-0
TOTAL	64-63	5285	3	6	12	61	.047	22	.344	1	1-1

MAYA SWABY-WALLERSON

FR • Defender • 5-7 • Hamilton, Ontario • Bishop Secondary School

3



Has seen several stints with the Jamaican Youth National Teams, including securing a roster spot for the team's CONCACAF Champions Qualifier ... Spent five years with the Stoney Creek Soccer Club, which was highlighted by National Cup and Ontario Cup titles in 2014, back-to-back League Cup championships in 2012 and 2013.

	GP-GS	Min	G	A	Pts	Shot	Sh%	SOG	SOG%	GW	PK-Att
2018	2-0	21	0	0	0	0	.000	0	.000	0	0-0
TOTAL	2-0	21	0	0	0	0	0	0	.000	0	0-0

KAILEY LANE

RS-FR • Forward • 5-9 • Omaha, Neb. • Millard North HS

4



Logged first minutes as a Jayhawk in nine-minute outing against South Dakota State (8/19) ... Forced to sit out the 2017 season following a preseason leg injury ... Helped Millard North to four-straight district titles (2014-17) as well as three state runner-up finishes in 2014, 2016 and 2017 ... Was named to the Nebraska All-State Second Team following her sophomore season in 2015.

	GP-GS	Min	G	A	Pts	Shot	Sh%	SOG	SOG%	GW	PK-Att
2017											
Redshirt Year											
2018	4-0	30	0	0	0	0	.000	0	.000	0	0-0
TOTAL	4-0	30	0	0	0	0	.000	0	.000	0	0-0

OLIVIA PESEK

SO • Midfielder • 5-5 • Omaha, Neb. • Millard West HS

5



Four-time letterwinner at Millard West HS, where she scored 15 goals and added 10 assists over the last three seasons ... Helped the Wildcats to three-straight conference and district titles in 2015, 2016 and 2017 and added a Nebraska Class A state championship in 2015.

	GP-GS	Min	G	A	Pts	Shot	Sh%	SOG	SOG%	GW	PK-Att
2017	5-0	35	0	0	0	0	.000	0	.000	0	0-0
2018	1-0	11	0	0	0	0	.000	0	.000	0	0-0
TOTAL	6-0	46	0	0	0	0	.000	0	.000	0	0-0

KAELA HANSEN

FR • Midfielder • 5-7 • Burnaby, British Columbia • Burnaby Central

6



Started and averaged 80.7 min/gm in the Jayhawks' first 12 matches of 2018 ... Was 16 years old when she made her debut in the Canadian Youth National Team in 2016 ... Earned first cap and played all 90 minutes in Canada's 3-2 victory over Cameroon in the group stage of the U17 Women's World Cup in 2016 ... Has also spent time in camp with Canada's U20 squad, making the roster for the Three Nations Tournament in Australia in Summer of 2017.

	GP-GS	Min	G	A	Pts	Shot	Sh%	SOG	SOG%	GW	PK-Att
2018	12-12	968	0	0	0	2	.000	1	.500	0	0-0
TOTAL	12-12	968	0	0	0	2	.000	1	.500	0	0-0

AVERY HALL

SO • Defender • 5-5 • McKinney, Texas • McKinney Boyd HS

7



Has seen 45 minutes during three appearances this year ... A four-time all-district first-team selection for the Broncos at McKinney as well as the team's defensive MVP following 2015-16 ... Named 6-6A Defender of the Year following her senior season in 2017 ... Spent four years with Solar Chelsea, where she was the team captain for the last three years ... In 2013-14, helped Chelsea to the ECNL Texas Conference State

	GP-GS	Min	G	A	Pts	Shot	Sh%	SOG	SOG%	GW	PK-Att
2017	1-0	13	0	0	0	0	.000	0	.000	0	0-0
2018	3-0	45	0	0	0	0	.000	0	.000	0	0-0
TOTAL	4-0	58	0	0	0	0	.000	0	.000	0	0-0

ANNA COURTNEY

RS-Jr • Midfielder • 5-4 • Parkville, Mo. • Park Hill South HS

8



Averaged 17.7 min/gam in her seven outings this season ... Forced to sit out the season after tearing her ACL in a spring exhibition match in April 2017 ... Appeared in 20 of KU's 21 outings in 2016, averaging 30.6 minutes per outing ... Named to the 2016 Academic All-Big 12 First Team.

	GP-GS	Min	G	A	Pts	Shot	Sh%	SOG	SOG%	GW	PK-Att
2015	21-1	597	2	0	4	5	.400	2	.400	1	0-0
2016	20-3	613	0	0	0	10	.000	3	.300	0	0-0
2017											
Redshirt Year											
2018	7-0	124	0	0	0	4	.000	1	.250	0	0-0
TOTAL	48-4	1334	2	0	4	19	.105	6	.316	1	0-0

MADISON MEADOR (MEH-der)

JR • Midfielder • 5-7 • Ballwin, Mo. • Marquette HS • Ole Miss

9



Scored first-career goal and eventual game-winner in KU's 3-0 win over South Dakota State (8/17) ... Averaged 37 min/gm in 18 appearances as a midfielder in 2017 ... Assisted on Hannah Lukinac's game-winner vs. Oregon State (8/27) ... Transferred to Kansas following a solid freshman season at Ole Miss, where she started on the back line in 18 of the Rebels' 20 matches.

	GP-GS	Min	G	A	Pts	Shot	Sh%	SOG	SOG%	GW	PK-Att
2016*	20-18	-	0	0	0	13	.000	4	.308	0	0-0
2017	18-3	726	0	2	2	3	.000	1	.333	0	0-0
2018	11-11	995	1	0	2	8	.125	2	.250	1	0-0
TOTAL	49-32	1721	1	2	4	21	.048	6	.286	1	0-0

MIRIAM MELUGIN (mel-OO-jin)

RS-SR • Midfielder • 5-8 • Springfield, Mo. • Kickapoo HS

10



Starter in 11 of KU's 12 outings, averaging 74.5 min/gm ... Forced to sit out the 2017 season after tearing her ACL over the summer ... Appeared in 19 of the Jayhawks' 21 matches in 2016, which included her first-career start in KU's 1-0 win at Texas (10/2) ... Her 458 minutes of field action more than doubled her total minutes from her first two seasons combined.

	GP-GS	Min	G	A	Pts	Shot	Sh%	SOG	SOG%	GW	PK-Att
2014	7-0	125	0	0	0	2	.000	0	.000	0	0-0
2015	13-0	219	0	0	0	5	.000	1	.200	0	0-0
2016	19-1	458	0	0	0	8	.000	3	.375	0	0-0
2017	Redshirt Season										
2018	12-11	894	0	1	1	13	.000	5	.385	0	0-0
TOTAL	51-12	1696	0	1	1	28	.000	9	.321	0	0-0

CHAS WRIGHT

FR • Defender • 5-5 • Kansas City, Mo. • Park Hill HS

11



A key member of the Park Hill Lady Trojans' impressive run over the last three years, which included a state-record 25 wins in 2016 ... With her holding down the back line, Park Hill tallied three-straight district and sectional championships from 2015-17 and posted shutouts in 23 of its contests in 2016, which included 12-straight clean sheets during that season.

	GP-GS	Min	G	A	Pts	Shot	Sh%	SOG	SOG%	GW	PK-Att
2018	0-0	0	0	0	0	0	.000	0	.000	0	0-0
TOTAL	0-0	0	0	0	0	0	.000	0	.000	0	0-0

KATIE McCLURE

JR • Forward • 5-4 • Wichita, Kan. • Maize HS

12



Second in the Big 12 with 15 points (6 goals, 3 assists) ... Already a two-time Big 12 Offensive Player of the Week this season (8/21, 9/4) ... A starter in 20 games last season, averaging 69 min/gm ... Tallied first-career multi-goal game in KU's win over Oklahoma (10/22) ... Saw action in all 21 of KU's matches in 2016 and was a member of the starting line-up in each of the final 16 contests.

	GP-GS	Min	G	A	Pts	Shot	Sh%	SOG	SOG%	GW	PK-Att
2016	21-16	1405	5	2	12	54	.093	28	.519	3	0-0
2017	20-20	1412	6	2	14	52	.115	25	.481	1	0-0
2018	12-12	794	6	3	15	26	.231	15	.577	4	0-0
TOTAL	53-48	3611	17	7	41	132	.129	68	.515	8	0-0

KATHRYN CASTRO

SO • Midfielder • 5-3 • Plano, Texas • Plano West Senior High

13



A reserve midfielder who is averaging 25.2 min/gm in 12 outings this season ... Named HS team's most valuable offensive player following the 2016 season ... Helped the Wolves to the 6A District 6 title in 2015 ... Spent four successful years as a member of the Solar Chelsea Soccer Club from 2013-17.

	GP-GS	Min	G	A	Pts	Shot	Sh%	SOG	SOG%	GW	PK-Att
2017	18-4	550	0	0	0	7	.000	3	.429	0	0-0
2018	12-0	302	0	0	0	4	.000	2	.500	0	0-0
TOTAL	30-4	852	0	0	0	11	.000	5	.455	0	0-0

SAMANTHA BARNETT

FR • Forward • 5-8 • Edmond, Okla. • Edmond Memorial HS

14



A reserve forward who averaged 18.4 min/game in KU's first 12 games this season ... Named to the all-city second team along with the Central Oklahoma All-Conference squad following her sophomore season in 2016 ... Father, Maurice, played soccer at Oklahoma City University ... Joins two cousins as a student-athlete in the Big 12, Kristian Doolittle is a sophomore on the Oklahoma men's basketball team, and Kameron Doolittle was a wide receiver at Oklahoma State from 2013-15.

	GP-GS	Min	G	A	Pts	Shot	Sh%	SOG	SOG%	GW	PK-Att
2018	12-0	221	0	0	0	3	.000	0	.000	0	0-0
TOTAL	12-0	221	0	0	0	3	.000	0	.000	0	0-0

CERI HOLLAND (CARE-ee)

SO • Midfielder • 5-5 • West Yorkshire, England • South Craven School

15



A key piece to the KU midfield, averaging 79.7 min/game this season ... Scored eventual game-winner in KU's victory over Iowa State (9/29) ... Named to 2017 Big 12 All-Freshman team ... Came to Kansas after three-year stint with Manchester City's developmental team ... A member of Wales' U19 National Team during qualifiers for the 2016 UEFA European Championship, making three appearances.

	GP-GS	Min	G	A	Pts	Shot	Sh%	SOG	SOG%	GW	PK-Att
2017	20-20	1564	1	1	3	34	.029	14	.412	0	0-0
2018	12-12	956	1	3	5	26	.038	7	.269	1	0-0
TOTAL	32-32	2520	2	4	8	60	.033	21	.350	1	0-0

ITALIA BRADLEY

FR • Defender • 5-7 • Coppell, Texas • Coppell HS

16



Member of the Coppell Cowgirls squad that claimed the 2015 6A Texas State title ... Also helped the Cowgirls to the NSCAA National Championship in 2015 ... Named to the all-tournament team after stellar performances in the Allison Horn Memorial in 2015 ... A key player for Solar Chelsea's impressive run over the last four years, which has seen the club claim four-consecutive conference titles.

	GP-GS	Min	G	A	Pts	Shot	Sh%	SOG	SOG%	GW	PK-Att
2018	7-0	106	0	0	0	0	.000	0	.000	0	0-0
TOTAL	7-0	106	0	0	0	0	.000	0	.000	0	0-0

TAYLOR CHRISTIE

JR • Forward • 5-6 • Overland Park, Kan. • Shawnee Mission South HS

17



Posted first-career multi-goal game in KU's 3-0 win over Oregon State (8/24) ... Scored first career goal in KU's 3-0 win over South Dakota State (8/19) ... Averaged just over 27.2 minutes in KU's 20 outings last year ... Saw first start of career in KU's 1-1 draw at Texas Tech (9/24/17) ... Logged a career-high three shots in draw at Saint Louis (9/8/17).

	GP-GS	Min	G	A	Pts	Shot	Sh%	SOG	SOG%	GW	PK-Att
2015	Redshirt Season										
2016	1-0	6	0	0	0	0	.000	0	.000	0	0-0
2017	20-1	545	0	0	0	13	.000	4	.308	0	0-0
2018	12-0	412	3	0	6	22	.136	7	.318	0	0-0
TOTAL	33-1	963	3	0	6	35	.086	11	.314	0	0-0

EMILIE GAVILLET (GAH-vee-ay)

FR • GK • 5-9 • Montreux, Switzerland • Wilhelm Hausenstein Gymnasium

18



Has seen two different stints with the Swiss youth national team at the U17 and U19 levels ... Spent the last two years on the second squad of Bayern Munich, which plays in the Bundesliga, Germany's premier league ... In 2017-18, her squad claimed the Vize German Champion for the second division of the Bundesliga.

	GP-GS	Min	GA	GAAvg	Sv	Sv%	W	L	T	Sho
2018	0-0	0:00	0	0	0	.000	0	0	0	0
TOTAL	0-0	0:00	0	0	0	.000	0	0	0	0

EVA ELÍASDÓTTIR

JR • Defender • 5-9 • Thorlakshofn, Iceland • Fjölbrautskóli Suðurlands

19



Saw first action of 2018 vs. Butler (9/2) after injury sidelined her for the first five outings of the season ... A starter on KU's back line in all 20 matches in 2017 ... Saw action in 16 of KU's 21 matches as a freshman, which included each of the final 10 contests ... Averaged 18.5 points per match and 22 minutes per game in the final five games of the season ... Helped team place second in Iceland Women's Cup

	GP-GS	Min	G	A	Pts	Shot	Sh%	SOG	SOG%	GW	PK-Att
2016	16-0	297	0	1	1	3	.000	2	.667	0	0-0
2017	20-20	1640	1	1	3	5	.200	1	.200	0	0-0
2018	7-5	315	0	1	1	4	.000	0	.000	0	0-0
TOTAL	43-25	2252	1	3	5	12	.083	3	.250	0	0-0

AVERY RIPPLE

FR • Midfielder • 5-3 • Papillion, Neb. • Papillion La-Vista South HS

20



A member of Elite Girls Academy's highly successful run over the last four years ... Helped the club to back-to-back state titles in 2016 and 2015 as well as a runner-up state finish in 2014 ... Led the Elites to qualification runs to regionals in both 2015 and 2016 ... Father, Reggie, played baseball at St. Ambrose University in Iowa.

	GP-GS	Min	G	A	Pts	Shot	Sh%	SOG	SOG%	GW	PK-Att
2018	0-0	0	0	0	0	0	.000	0	.000	0	0-0
TOTAL	0-0	0	0	0	0	0	.000	0	.000	0	0-0

ISABELLA CAVALCANTE

SO • Defender • 5-7 • Glen Ellyn, Ill. • Glenbard West HS

21



Averaged 68 min/gm in first seven matches of 2018 before injury sidelined her for KU's last five outings ... Started each of the Jayhawks' 20 matches at right-back in 2017, averaging 83.3 min/gm ... Member of the Sockers FC club team out of Chicago ... Helped Sockers to ECNL national playoffs in three-straight years from 2014-16 ... Selected to the Illinois Olympic Development team in 2011.

	GP-GS	Min	G	A	Pts	Shot	Sh%	SOG	SOG%	GW	PK-Att
2017	20-20	1663	1	1	3	10	.100	4	.400	1	0-0
2018	7-6	476	0	1	1	1	.000	1	1.000	0	0-0
TOTAL	27-26	2139	1	2	4	11	.091	5	.455	1	0-0

MANDI DUGGAN

RS-SO • Forward • 5-2 • Aurora, Colo. • Grandview HS

22



Logged first minutes since being forced to sit last season after suffering a knee injury in KU's 3-0 win over South Dakota State (8/19)... Appeared in 20 of KU's 21 matches in 2016 and notched four starts ... Scored three goals in her debut season, all of which came within the first seven games.

	GP-GS	Min	G	A	Pts	Shot	Sh%	SOG	SOG%	GW	PK-Att
2016	20-4	504	3	0	6	10	.300	3	.300	3	0-0
2017	Redshirt Season										
2018	3-0	31	0	0	0	1	.000	0	.000	0	0-0
TOTAL	23-4	535	3	0	6	11	.273	3	.273	3	0-0

GRACE WILTGEN

FR • Defender/Forward • 5-3 • Denton, Texas • Denton HS

23



Tallied first start of career in KU's 3-0 win over South Dakota State (8/19) ... Collected three letters as a member of Rock Monk's Denton Broncos team ... With her on the squad, the Broncos repeated as bidistrict champions in 2016 and 2017 and added district and area titles in last year as well ... Turned in a school-record 41 goals in 2017, surpassing the previous mark of 20 ... Played the last three years with FC Dallas.

	GP-GS	Min	G	A	Pts	Shot	Sh%	SOG	SOG%	GW	PK-Att
2018	12-2	551	0	0	0	3	.000	2	.667	0	0-0
TOTAL	12-2	551	0	0	0	3	.000	2	.667	0	0-0

ELISE REINA

JR • Defender • 5-8 • Fayetteville, Ark. • Har-Ber HS

24



Netted first-career goal and eventual game-winner in KU's win over Butler (9/2) ... A starter at wide defender in 11 of KU's 12 matches ... Averaged 30.3 min/gm in 18 outings last season ... Tallied first collegiate assist on Grace Hagan's goal vs. Texas A&M (9/10) ... Named first all-state in 2013 and 2016 at Har-Ber HS ... Earned all-conference honors all four years of HS.

	GP-GS	Min	G	A	Pts	Shot	Sh%	SOG	SOG%	GW	PK-Att
2016	3-0	12	0	0	0	1	.000	0	.000	0	0-0
2017	18-2	566	0	1	1	5	.000	0	.000	0	0-0
2018	12-11	968	2	1	5	12	.167	5	.417	1	0-0
TOTAL	33-13	1546	2	2	6	18	.111	5	.278	1	0-0

GRACE HAGAN

SR • Forward • 5-10 • Wichita, Kan. • Kapaun Mt. Carmel Catholic HS

25



Tallied first-career hat trick in KU's 3-2 win over Saint Louis (9/14) ... Scored or assisted in 10 of KU's 20 matches last season ... Entered 2017 as 1 of 30 players on the MAC Hermann Trophy Watch List ... Called to the U.S. National Team's U23 Camp in late July 2017 ... Named to the NSCAA All-Central Region First Team and to the All-Big 12 First Team as a sophomore in 2016.

	GP-GS	Min	G	A	Pts	Shot	Sh%	SOG	SOG%	GW	PK-Att
2015	21-21	1486	4	3	11	30	.133	10	.333	1	0-0
2016	21-19	1646	7	4	18	47	.149	23	.489	2	3-3
2017	20-19	1649	7	5	19	39	.179	21	.538	1	2-2
2018	12-12	897	4	2	10	37	.108	15	.405	1	0-0
TOTAL	74-71	5678	22	14	58	153	.144	69	.451	5	5-5

ADDISYN MERRICK

JR • Defender • 5-5 • Lee's Summit, Mo. • Lee's Summit North HS

26



KU's leader in minutes, averaging 95.2 min/gm in 12 starts this season ... Appeared in all 20 of Kansas' matches in 2017, which included starts in 14 of the team's last 15 contests ... Named to the Big 12 All-Newcomer team in 2016 ... Scored her lone goal of 2017 in KU's 3-1 win over Baylor (10/23) ... Averaged 77.6 min/game and played the full match in 14 of her 21 appearances.

	GP-GS	Min	G	A	Pts	Shot	Sh%	SOG	SOG%	GW	PK-Att
2016	21-14	1630	1	0	2	11	.091	5	.455	0	0-0
2017	20-20	1867	0	0	0	1	.000	1	1.000	0	0-0
2018	12-12	1142	0	0	0	2	.000	1	.500	0	0-0
TOTAL	53-46	4639	1	0	2	14	.071	7	.500	0	0-0

SOPHIE MAIERHOFER

JR • Midfielder • 5-7 • Graz, Austria • University of Bremen

27



Saw first action since season-opener in KU's 2-1 win over Utah following injury ... Sent in her fourth and final goal of 2017 in KU's 1-1 draw at Texas Tech (9/24) ... Posted first multi-goal match of her career with a pair vs. Central Michigan (8/20) ... Member of Austrian squad that advanced to the semifinals of the 2017 UEFA European Championships.

	GP-GS	Min	G	A	Pts	Shot	Sh%	SOG	SOG%	GW	PK-Att
2016	12-9	714	1	0	2	3	.333	2	.667	0	0-0
2017	18-16	1159	4	1	9	25	.160	12	.480	1	0-0
2018	5-1	107	0	0	0	2	.000	0	.000	0	0-0
TOTAL	35-26	1980	5	1	11	30	.167	14	.467	1	0-0

BRI AMOS

FR • Midfielder • 5-7 • Tulsa, Okla. • Union HS

28



A four-year starter for a Union High School squad that claimed three-straight 6A Oklahoma State titles in 2015, 2016 and 2017 ... Also helped Union win three district championships from 2015-17 ... Member of the teams that won Top Drawer Soccer national championships in 2015 and 2016 and was a finalist in 2017 ... Named to the All-Conference team following her junior year in 2017.

	GP-GS	Min	G	A	Pts	Shot	Sh%	SOG	SOG%	GW	PK-Att
2018	10-1	228	0	1	1	3	.000	0	.000	0	0-0
TOTAL	10-1	228	0	1	1	3	.000	0	.000	0	0-0