

UNIVERSITY INFORMATION

Location	Lawrence, Kansas
School Founded	1866
Enrollment	27,784
Nickname	Jayhawks
Colors	Crimson (Pantone 186) and Blue (Pantone 293)
Chancellor	Dr. Bernadette Gray-Little (Marywood College, 1966)
Director of Athletics	Dr. Sheahon Zenger (Kansas State, 1988)

COACHING STAFF

Head Coach	Erin O'Neil
Alma Mater	Georgia, 1997
Assistant Coach	Katy Nahm
Alma Mater	Coastal Carolina, 2007

SUPPORT STAFF

Bill Cowgill	Associate Director of Sports Medicine
Debbie Van Saun	Senior Associate AD/SWA/ Golf Administrator
Patricia Dietz	Assistant Strength and Conditioning Coach

Quick Facts

COMMUNICATIONS

Primary Contact	Allan Parker
Office Phone	785.864.3417
Cell Phone	816.223.8823
Email	a877p711@ku.edu
Sport Supervisor	Chris Theisen
Office Phone	785.864.3474
Cell Phone	785.331.9356
Email	theisen@ku.edu
Office Manager	Erin Penning
Office Phone	785.864.3417
Email	epenning@ku.edu
Website	www.KUAthletics.com
Social Media	@KUWomensGolf

2014-15 SCHEDULE

September		
8-9	Marilynn Smith Invitational	Lawrence, Kan.
15-16	Minnesota Invitational	Minneapolis, Minn.
21-23	Lady Paladin Invitational	Greenville, S.C.
October		
10-12	Ron Moore Intercollegiate	Littleton, Colo.
26-28	Palmetto Intercollegiate	Kiawah Island, S.C.
February		
22-24	All State Sugar Bowl Intercollegiate	New Orleans, La.
March		
16-17	Arizona Wildcat Invitational	Tuscon, Ariz.
23-25	SDSU Farms Invitational	San Diego, Calif.
April		
10-11	DAC/SMU Invitational	Dallas, Texas
24-26	Big 12 Championship	San Antonio, Texas
May		
7-9	NCAA Regionals	TBD
22-27	NCAA Championships	Brandenton, Fla.

2014-15 ROSTER

Name	Class	Hometown/Previous School
Gabriella DiMarco	Senior	West Chester, Pa./West Chester East HS
Kallie Gonzales	Freshman	Clovis, N.M./Montgomery HS
Carly Humes	Junior	The Woodlands, Texas/Heritage Academy
Yupaporn Kawinpakorn	Junior	Samuthprakan, Thailand/Praphamontree II School
Minami Levonowich	Senior	Houston, Texas/Kennesaw State
Pornvipa Sakdee	Sophomore	Kampheang Phet, Thailand/Watchara Wittay School
Mackenzie Sexe	Freshman	Savage, Minn./Prior Lake HS
Mackenzie Thayer	Junior	Garden City, Kan./Garden City HS
Pitsinee Winyarat	Freshman	Bangkok Thailand/Bromsgrove International School
Michelle Woods	Senior	Manhattan, Kan./Manhattan HS

TABLE OF CONTENTS

1.	Quick Facts
2-3.	Alvamar Golf Club
4-5.	Jayhawks in Ireland
6-7.	Jayhawks at Nationals
8.	Life as a Jayhawk
9.	Jayhawks in the Community
10.	Student Support- KU Leads
11.	Academic Support
12-13.	Athletic Department Success
14-15.	Athletic Facilities
16-17.	The University of Kansas
18-19.	Campus Living
20.	Famous Alumni
21.	Kansas City
22-23.	The City of Lawrence
24-25.	KU Traditions
26-35.	Players Bios
36-37.	Coaches Bios
38.	Support Staff
39.	University Chancellor
40.	Director of Athletics
41-45.	2013-14 Team Recap
46.	Marilynn Smith Sunflower Invitational History
47.	History/All-Time Letterwinners
48-49.	History/Individual Records
50.	History/Individual Honors
51.	History/Team Records
52.	History/NCAA Championship
53.	History/Conference Championships
54.	History/Year-by-Year Results

The University of Kansas prohibits discrimination on the basis of race, color, ethnicity, religion, sex, national origin, age, ancestry, disability, status as a veteran, sexual orientation, marital status, parental status, gender identity, gender expression and genetic information in the University's programs and activities. The following person has been designated to handle inquiries regarding the non-discrimination policies: Director of the Office of Institutional Opportunity and Access, IOA@ku.edu, 1246 W. Campus Road, Room 153A, Lawrence, KS, 66045, (785) 864-6414, 711 TTY.

ALVAMAR GOLF CLUB



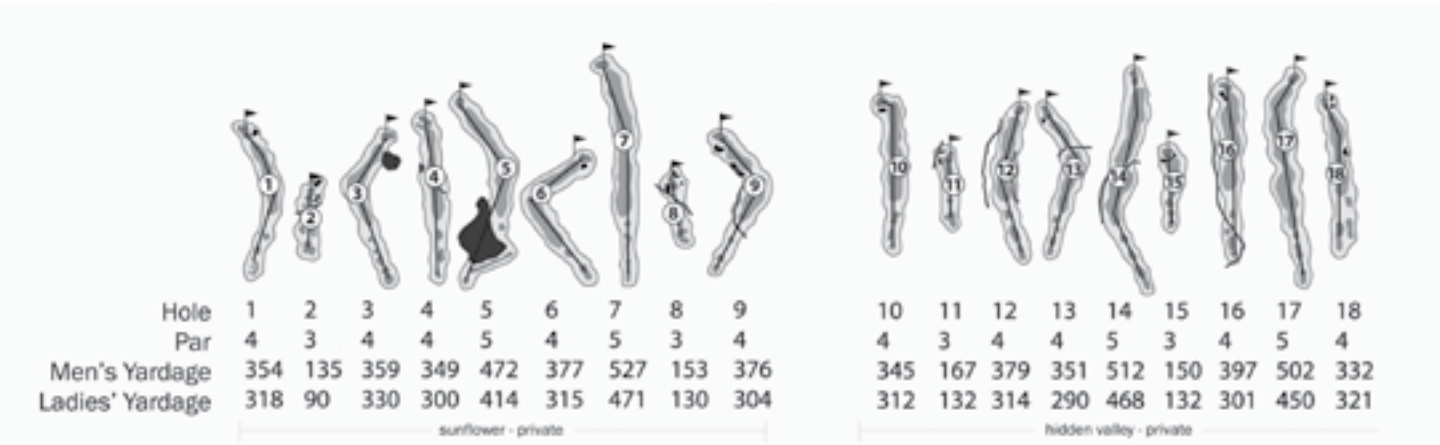
- THE CHAMPIONSHIP COURSE WAS NAMED ONE OF AMERICA'S TOP-75 PUBLIC COURSES BY *GOLF DIGEST*
- THE MEMBERS COURSE WAS INCLUDED IN THE "BEST IN STATE" RANKINGS BY THE KANSAS GOLF ASSOCIATION
- RANKED AMONG THE TOP 75 BEST PUBLIC COURSES BY *USA TODAY*

Alvamar Golf Club was opened for play May 15, 1968, with the two original nines, Jayhawk and Quail Creek, joined by the Hidden Valley nine in 1973. The Sunflower nine opened in 1978 and in 1982, the Hidden Valley and Sunflower nines became Alvamar Country Club.

Alvamar was named by developer and one time men's golf coach Bob Billings from the contraction of the names of his parents, Alva and Margaretta Billings of Russell, Kan. In all, Alvamar Golf Club and Country Club encompasses more than 3,000 acres of west Lawrence. The 36 holes at Alvamar were designed by Mel Anderson and Bob Dunning and include a public and private clubhouse, driving range and three practice greens. The two courses at Alvamar were the first in the

United States to utilize zoysia grass for its fairways and tees. The course currently uses cohansey bent green on both surfaces.

In 1991, Alvamar Country Club hosted the Kansas Amateur. Alvamar Golf Club annually hosts the Kansas Open and has been the site of the United States Golf Associations Women's Public Links tournament. It was the site of the Big Eight Conference Men's Championship for eight consecutive years, and in 1990, the Big Eight Conference Women's Championship was held at Alvamar and won by the Jayhawks. Alvamar Golf Club hosted the inaugural Big 12 Women's Championship in 1997 and has been the site of the KU men's Kansas Invitational and women's Marilynn Smith Sunflower Invitational.



Having been honored as one of the "Best maintained golf courses in the United States" by *Grounds Maintenance Magazine*, Alvamar continues to improve its attractive golf venue. At Alvamar Golf Club, the Director of Golf is Eric Magnuson, while Paul Hooser serves as head professional at Alvamar Country Club.

Alvamar Country Club is considered one of the finest golf courses in the state. Alvamar's reputation is one of the reasons KU attracts some of the top golfers in the country.

In addition to Alvamar's public and private courses, golf options in Douglas County include Lawrence Country Club and Eagle Bend Golf Course. Furthermore, there are more than 20 golf courses within an hours' drive of campus.



KNAPHEIDE FAMILY PRACTICE FACILITY

The Kansas women's golf program added a new member to the Jayhawk family in 2008: the state-of-the-art Knapheide Family Practice Facility.

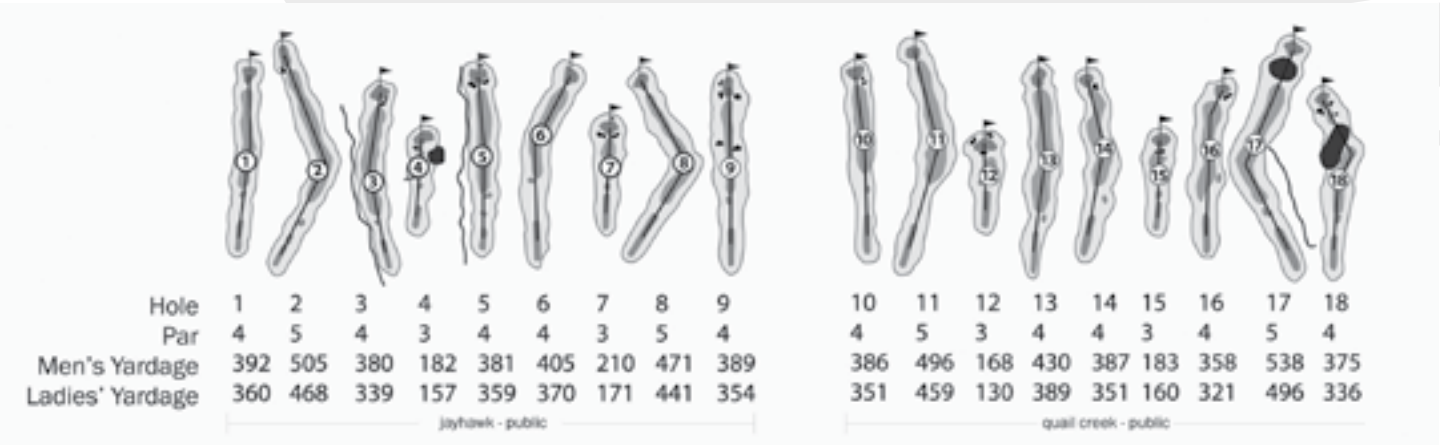
The practice facility includes four heated hitting bays to go along with cutting-edge swing technology.

The bays are part of a climate-controlled facility that allows the Kansas golfers to hit balls out into the driving range at Alvamar Golf Club.

The facility is equipped with three smaller bays in addition to the one larger bay. The larger bay features a V1 video system, along with a Trackman radar launch monitoring system.

Each smaller bay is equipped to provide two putting holes along with mirror technology that monitors the fundamentals of the golfers.

Five different golfers can use the radiant heated facility with three golfers in each of the small bays, along with two golfers utilizing the larger bay, at one time.



JAYHAWKS IN IRELAND 2013



JAYHAWKS IN IRELAND 2013



JAYHAWKS AT NATIONALS 2014



JAYHAWKS AT NATIONALS 2014



LIFE AS A JAYHAWK

**1. TRAVEL IN STYLE**

The Kansas women's golf team travels in a luxurious Mercedes touring bus.

2. ADIDAS GEAR

Kansas student-athletes are decked out in top-of-the-line Adidas gear. The current women's golf attire is pictured here.

3. HALLOWEEN AT ALVAMAR

The golf team plays a practice round in full costume at Alvamar golf course.

JAYHAWKS IN THE COMMUNITY

**1. BOYS & GIRLS CLUB**

Gabriella DiMarco tutors a Lawrence boy on his putting technique.

2. LOCAL SOUP KITCHEN

The women's golf team spent a day volunteering at a local soup kitchen.

3. BOYS & GIRLS CLUB

Yupaporn Kawinpakorn demonstrates proper swing technique to a group of local Lawrence youths.

4. LOCAL SOUP KITCHEN

The team poses for a picture while serving food at a Lawrence soup kitchen.

STUDENT SUPPORT - KU LEADS



1



2



3



4



5



6



1

represent the University of Kansas and its intercollegiate athletic programs with pride, integrity and intense competitive spirit.

2. EMERGENT LEADER RETREATS

Student-athletes, selected by their coaches, attend an overnight Jayhawk Leadership Retreat twice a year. They participate in activities, exercises and discussions designed to enhance leadership skills from a strengths-based perspective.

3. CAREER DEVELOPMENT

A career development progression; beginning with a career interest inventory, resume review, career coaching, mock interviews, utilizing KU Career Connections and Kansas Athletics' Career Fair.

4. JAYHAWKS AFTER COMPETITION

Kansas Athletics Career Services and K Club have teamed up to assist student-athletes who have exhausted athletic eligibility, but are finishing up academic responsibilities while transitioning into life after competition.

5. STUDENT-ATHLETE ADVISORY COMMITTEE

SAAC's mission is to enhance the total student-athlete experience, protect student-athlete welfare and promote a positive student-athlete image.

6. COMMUNITY SERVICE

Developing leaders off the field by fostering an environment in which the student athletes understand and value the benefits of giving back to their community.

2,000+
HOURS OF COMMUNITY
SERVICE COMPLETED TOTAL
BY KU STUDENT-ATHLETES IN
THE PAST YEAR

45
STUDENT ATHLETES SERVE
AS SAAC MEMBERS

ACADEMIC SUPPORT



ACADEMICS

The Student-Athlete Support Services staff focuses all collective resources in support of the academic, personal and interpersonal development of each individual it serves. As part of its commitment to the academic success of its athletes, Kansas Athletics completed a new academic complex in the summer of 2009. The facility features individual study rooms, a computer lab and offices for all Student-Athlete Support Services personnel.

STRATEGIC AND INSTRUCTIONAL
TUTORING PROGRAMS (STP)

- Tutoring is available to any student-athlete, regardless of scholarship status or sport.
- Many of the tutors working within STP are instructors or teaching assistants at KU. Some are undergraduate students who have excelled in their respective subject areas.
- Both programs offer individualized tutoring as well as small study groups.
- STP schedules nearly 2,000 tutoring sessions per week for more than 350 student-athletes working with tutors each week each semester.
- STP has more than 120 tutors who work with student-athletes who request tutoring assistance.

28
NGCA ALL- AMERICAN SCHOLARS IN TEAM
HISTORY, INCLUDING 21 UNDER COACH
ERIN O'NEIL

64
ACADEMIC ALL- BIG 12 SELECTIONS,
INCLUDING 39 UNDER COACH ERIN O'NEIL

27
TEAM TITLES, 12 UNDER
COACH ERIN O'NEIL

4
BIG 12 FIRST TEAM ALL-CONFERENCE
PLAYERS IN THE COACH ERIN O'NEIL ERA

2,000
TUTORING SESSIONS
SCHEDULED PER WEEK FOR
MORE THAN 350 STUDENT-
ATHLETES

120+
TUTORS WHO WORK
WITH STUDENT-ATHLETES
WHO REQUEST TUTORING
ASSISTANCE

3.26
KANSAS WOMEN'S GOLF
GPA FOR THE 2014 SPRING
SEMESTER

ATHLETIC DEPARTMENT SUCCESS (2013-14)

1. **BASEBALL**
TEAM: NCAA Tournament appearance (Louisville Regional), Six players drafted (tied for most in Big 12 in 2014)

Stephen Villines, Second-team freshman All-American (NCBWA)
2. **M. BASKETBALL**
TEAM: 10-straight Big 12 Championships and 25 consecutive NCAA Tournament appearances

Joel Embiid, No. 3 Pick in the 2014 NBA Draft; Big 12 Defensive Player of the Year, All-Big 12 Second Team, Big 12 All-Newcomer Team

Andrew Wiggins, No. 1 Pick in the 2014 NBA Draft; Consensus Second Team All-American, Big 12 Freshman of the Year, All-Big 12 First Team
3. **W. BASKETBALL**
Chelsea Gardner, All-Big 12 First Team, WBCA All-Region Team
4. **FOOTBALL**
James Sims, All-Big 12 First Team, First player in school history with back-to-back 1,000-yard rushing seasons
5. **W. GOLF**
TEAM: Highest finish in conference championship (T-4th) since 1992, NCAA at-large regional selection, Advanced to NCAA Championship

Yupaporn Kawinpakorn, All-Big 12 First Team, Big 12 All-Tournament Team
6. **ROWING**
Elizabeth Scherer, All-Big 12 First Team, Dr. Gerald Lage Award, Dr. Prentice Gautt Postgraduate Scholarship, C-USA Scholar Athlete of the Year
7. **SOCCER**
Liana Salazar, All-Big 12 First Team (2013)
8. **SOFTBALL**
TEAM: NCAA Tournament appearance, first since 2006

Chaley Brickey, All-Big 12 Second Team, All-Region First Team (Midwest Region)

9. **SWIMMING & DIVING**
Chelsie Miller, All-American (400 IM), Big 12 Swimmer of the Meet, First Big 12 Champion in school history (400 IM)

Clark Campbell, Big 12 Women's Swim Coach of the Year, Big 12 Championships Coach of the Meet
10. **TENNIS**
TEAM: Listed as high as No. 33 in Intercollegiate Tennis Association (ITA) poll during the season, the Jayhawks' highest rank in program history
11. **M. TRACK & FIELD**
Casey Bowen, 2014 Big 12 Outdoor Pole Vault Champion

Michael Stigler, Three-time Big 12 Outdoor 400m Hurdles Champion (2012, 2013, 2014), Two-time NCAA Outdoor 400m Hurdles runner-up (2013, 2014), 2014 Midwest Track Athlete of the Year
12. **W. TRACK & FIELD**
TEAM: 2013 NCAA Outdoor National Champion

Jessica Maroszek, Big 12 Outdoor Discus Champion (2013, 2014)

Lindsay Vollmer, Big 12 Heptathlon Champion (2013, 2014), 2013 NCAA Heptathlon Champion
13. **VOLLEYBALL**
TEAM: Back-to-back NCAA Tournament appearances (2012 Second Round, 2013 Sweet 16), Four All-Big 12 First Team honorees

Ray Bechard, Big 12 Coach of the Year (2012, 2013), 2013 AVCA Midwest Region Coach of the Year

2013 All-Americans, Caroline Jarmoc (Third Team), Erin McNorton (Honorable Mention), Chelsea Albers (Honorable Mention) and Sara McClinton (Honorable Mention)



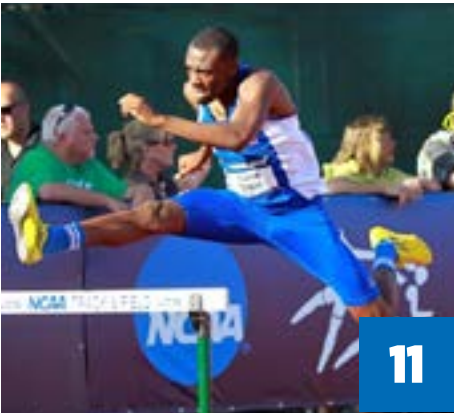
1



4



7



11



2



3



5



6



8



9



10



12



13

KU ATHLETIC FACILITIES



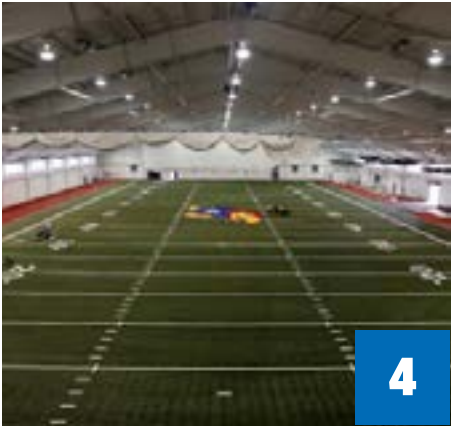
1



2



3



4



5



6



7



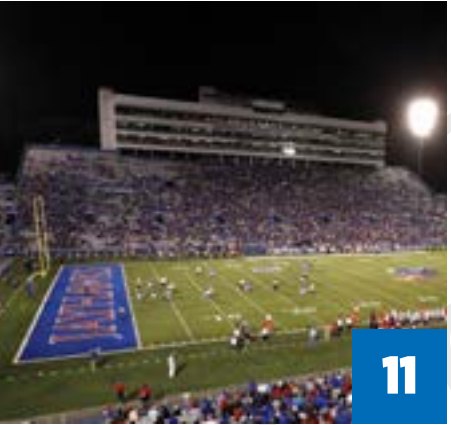
8



9



10



11



12

“THESE FACILITIES ARE CRITICALLY IMPORTANT TO MAINTAINING OUR COMPETITIVE EDGE.”
SHEAHON ZENGER, DIRECTOR OF ATHLETICS, UNIVERSITY OF KANSAS

- 1. **ALLEN FIELDHOUSE**
Allen Fieldhouse is labeled by many as one of the best places in America to watch a college basketball game; Hosts approximately 35 home basketball games (men and women combined) each year; Largest basketball arena in the state of Kansas and the second largest in the Big 12 Conference
- 2. **ANDERSON FAMILY FOOTBALL COMPLEX**
Completed in July 2008, now the headquarters of Kansas Football; Adjacent to Memorial Stadium, the two-level building includes offices, academic areas, a weight room, locker rooms, an audio-visual room, meeting rooms, a cardio room, a hydro-therapy room, a nutrition area and a display area; The stand-alone, 80,000 square-foot facility is the state-of-the-art centerpiece of a \$33 million project, which also includes two practice fields and additional parking
- 3. **ANDERSON FAMILY STRENGTH & CONDITIONING CENTER**
State-of-the-art weight room that helps KU compete with other universities for top student-athletes; \$8 million, 42,000-square-foot complex

- 4. **ANSCHUTZ PAVILLION**
Indoor practice facility for many Jayhawk teams; 40,000-square-foot multi-purpose building; Renovated in August of 2011 and features a new turf surface
- 5. **ARROCHA BALLPARK AT ROCK CHALK PARK**
Home of Kansas softball; In its first season at the current location, Arrocha Ballpark was originally located south of Allen Fieldhouse, but the name transferred to honor the \$2 million gift by Cheryl Womack in November 2002
- 6. **ALVAMAR GOLF AND COUNTRY CLUB**
Considered “home” to the University of Kansas men’s and women’s golf programs; With a state-of-the-art practice facility and 36 of the finest-kept golf holes in Kansas, the teams are able to challenge themselves on a daily basis; The Knapheide Family Practice Facility consists of four climate-controlled hitting bays with cutting-edge swing technology; Three smaller bays in addition to one larger bay, which is equipped with a V1 video swing analysis system and a Trackman radar launch monitoring system

- 7. **HOGLUND BALLPARK**
Home of the Jayhawk baseball program; The entire field is covered in turf, with a different color and grade on the basepaths, at home plate and on the warning track
- 8. **HOREJSI FAMILY ATHLETICS CENTER**
Home of Kansas volleyball since 1999; One of five volleyball-only facilities in the Big 12 Conference, the HFAC also houses a locker room and separate team room for pregame meetings and downtime between classes
- 9. **KU SOCCER COMPLEX AT ROCK CHALK PARK**
Home of Kansas soccer; Opened in October 2014, this dedicated facility features a berm surrounding the playing surface and seats over 2,300 fans
- 10. **JAYHAWK TENNIS CENTER**
Indoor and outdoor home of Kansas Jayhawks tennis; A full-service facility with a slate of programming for all ages



13



14



15

- 11. **KIVISTO FIELD AT MEMORIAL STADIUM**
Recognized as the first stadium built on a college campus west of the Mississippi River, Memorial Stadium is the seventh-oldest collegiate stadium in the nation, as it opened in 1921; Located at the north base of Mt. Oread at 11th and Maine Street in Lawrence, it has a capacity of 50,071; In recent years, the stadium complex has been the focus of major renovations with more than \$30 million in improvements completed
- 12. **RIM ROCK FARM**
Located northwest of Lawrence; Has been the home of the Jayhawks since the 1974 season; Hosted the

- 2014 Big 12 Conference Cross Country Championships in November
- 13. **ROBINSON NATATORIUM**
Home of Kansas swimming and diving for more than 40 years; Current structure features a 25-meter, eight-lane competition pool, a 25-yard, six-lane pool and a diving well
- 14. **ROWING BOATHOUSE**
Home of Kansas rowing since 2009; Sits near the Kansas River in Lawrence’s Burcham Park; 14,000 square foot facility was dedicated on February 28, 2009

- 15. **KU TRACK COMPLEX AT ROCK CHALK PARK**
Home of Kansas track & field; 87th annual Kansas Relays were the first meet to be held at the new facility in April 2014; Recognized by the International Association of Athletics Federations (IAAF) as the fifth Class I Certified track on United States soil and one of only 105 in the entire world; Will host its first NCAA West Preliminary May 26-28, 2016

THE UNIVERSITY OF KANSAS

The University of Kansas is a major public research and teaching institution with lofty goals and a global outlook. The historic buildings and tree-covered campus, along with top-ranked academic programs and growing research endeavors, provide an environment that inspires and challenges students and faculty. Students find a home that is wireless yet historic, on the edge of both prairie and a metropolis with a myriad of opportunities and activities.



UNIVERSITY OF KANSAS

#1

NATIONAL RANKING,
CITY MANAGEMENT/
URBAN POLICY

26

RHODES SCHOLARS,
MORE THAN ALL OTHER
KANSAS UNIVERSITIES
COMBINED

\$296

MILLION DOLLARS IN
FINANCIAL AID PROVIDED TO
KU STUDENTS

25.3

STUDENTS' COMPOSITE ACT
SCORE. HIGHEST IN THE
STATE AND ABOVE NATIONAL
AVERAGE (22.5)

46

NATIONALLY RANKED
GRADUATE ACADEMIC
PROGRAMS — MORE THAN
ALL OTHER PUBLIC KANSAS
UNIVERSITIES COMBINED

27,784

CURRENT ENROLLMENT



CAMPUS LIVING



- 1. JAYHAWKER TOWERS**
KU student-athletes have the opportunity to live in fully-furnished Jayhawk Towers apartments, conveniently located near Allen Fieldhouse, Burge Union and Wagnon Student-Athlete Center. The Towers are equipped with king size beds and separate living quarters.
- 2. APARTMENTS**
All apartments are two-bedroom and are shared by two residents. Apartments have wireless internet, are cable-ready, are carpeted and partially furnished with beds, desks, chairs, and window blinds. A small kitchen is provided in each apartment.
- 3. BURGE UNION**
Jayhawk student-athletes often dine at the Burge Union, located adjacent to Allen Fieldhouse, Wagnon Student-Athlete Center and Jayhawk Towers. The Burge Union features a wide variety of food options and also houses the training table for KU student-athletes, which serves breakfast and dinner.
- 4. OTHER AMENITIES**
Greater privacy and independence
On-site staff
Information desk
Academic Resource Center
KU card-operated laundry
WiFi

2009

JAYHAWKER TOWERS
RENOVATION BEGAN

800

MEN & WOMEN STUDENT
RESIDENTS

\$14

MILLIONS SPENT ON
RENOVATIONS SINCE 2009

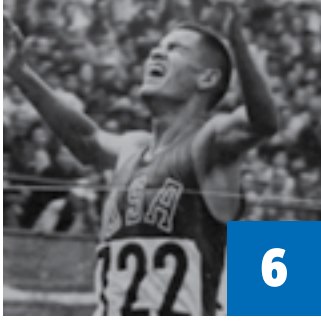
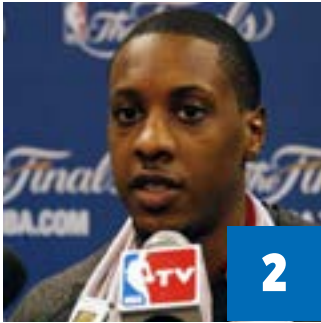
6

FLOORS + BASEMENT EACH
IN TOWERS A, B, C & D

.7

MILES TO THE
CAMPAÑILE

FAMOUS ALUMNI



- 1. **FORREST C. "PHOG" ALLEN (1885-1974)**
"Father of Basketball Coaching"; KU coach (1919-56, national championships 1921, 1922, 1952); creator of NCAA basketball tournament; Coached by James Naismith at KU
- 2. **MARIO CHALMERS**
NBA player with the Miami Heat, Two-time World Champion
- 3. **WILT CHAMBERLAIN (1936-99)**
NBA superstar (1959-73) for the Philadelphia/San Francisco Warriors, Philadelphia 76ers, Los Angeles Lakers
- 4. **BOB DOLE**
Kansas senator (1966-96), U.S. Senate majority leader; Presidential and vice-presidential nominee

- 5. **NANCY LANDON KASSEBAUM**
First female U.S. senator (1979-97) elected in own right
- 6. **BILLY MILLS**
Only American athlete to win the Olympic gold medal in the 10,000 meters (1964)
- 7. **BRIAN MCCLENDON**
Google Earth vice president for geo-products; Made Lawrence and KU the center of Google Earth
- 8. **MANDY PATINKIN**
Actor and singer ("The Princess Bride"; TV's "Chicago Hope," "Criminal Minds," "Homeland")
- 9. **PAUL PIERCE**
NBA Player with the Washington Wizards; NBA Champion (2008) with the Boston Celtics; NBA Finals MVP (2008); Ten-time NBA All-Star.

- 10. **ROB RIGGLE**
Comedian, actor ("The Hangover," "The Other Guys," "Step Brothers", TV's "Saturday Night Live" and "The Daily Show")
- 11. **PAUL RUDD**
Actor ("Clueless," "Knocked Up," TV's "Friends")
- 12. **KATHLEEN SEBELIUS**
Former U.S. Secretary of Health & Human Services, 44th Governor of Kansas
- 13. **GALE SAYERS**
Football running back (Chicago Bears 1965-71); Member NFL Hall of Fame
- 14. **LYNETTE WOODARD**
Major college women's basketball career scoring leader; Olympic gold medalist (1984); First female member of the Harlem Globetrotters

KANSAS CITY

Located 25 miles to the east of Lawrence is the Kansas City metro area. Home to the second-busiest live entertainment venue in the country (Sprint Center), and some of the fastest internet speeds in the world (Google Fiber), the city known as the "Paris of the Plains" is a modern metropolis in the midst of a downtown revitalization.



- 1. **DOWNTOWN**
In March 2012, downtown Kansas City was selected as one of America's best downtowns by *Forbes Magazine*.
- 2. **SPORTS**
The metro area is home to the Kansas City Chiefs, Kansas City Royals, Sporting KC, FC Kansas City and the Kansas City Explorers.
- 3. **ARTS & ENTERTAINMENT**
Opened in 2011, the \$415 million Kauffman Center for the Performing Arts is located in the Crossroads District, one of the five largest arts districts in the nation.
- 4. **LEGENDS OUTLET**
Kansas City's only outlet destination with more than 100 stores and restaurants is located east of Lawrence on the west side of KC metro area.
- 5. **SHOPPING**
The Country Club Plaza is Kansas City's outdoor, upscale shopping district. Over 180 shops and dozens of fine restaurants reside amidst the Spanish-inspired architecture.

79,000

NUMBER OF SEATS IN ARROWHEAD STADIUM, HOME OF THE CHIEFS FOOTBALL TEAM

100+

EVENTS HOSTED AT SPRINT CENTER LAST YEAR INCLUDING CONCERTS, FAMILY SHOWS, COLLEGIATE, AMATEUR AND PROFESSIONAL SPORTS

90+

BBQ JOINTS SMOKING IN THE KC METRO AREA

81

HOME ROYALS BASEBALL GAMES SCHEDULED IN 2015

25

NUMBER OF MILES FROM LAWRENCE, KS

THE CITY OF LAWRENCE

Named one of the “best lil’ college towns” in the country by *Rolling Stone Magazine* and listed ninth on the American Institute for Economic Research’s “College Destinations Index,” Lawrence is home to a diverse and progressive population of over 90,000 citizens who are proud to provide a home for The University of Kansas and the Jayhawks.

ONE OF “THE COUNTRY’S MOST BIKE-FRIENDLY TOWNS”

THE LEAGUE OF AMERICAN CYCLISTS

ALVAMAR GOLF COURSE IS AMONG “THE 100 BEST PUBLIC GOLF COURSES” IN THE NATION

GOLF DIGEST

ONE OF THE “BEST LIL’ COLLEGE TOWNS”

ROLLING STONE MAGAZINE

“THE 6TH-BEST SMALLER METRO AREA TO LAUNCH A BUSINESS OR A CAREER”

FORBES MAGAZINE

TOP 15 IN “THE 100 BEST SMALL ARTS TOWNS IN AMERICA”

JOHN VILLANI, AUTHOR

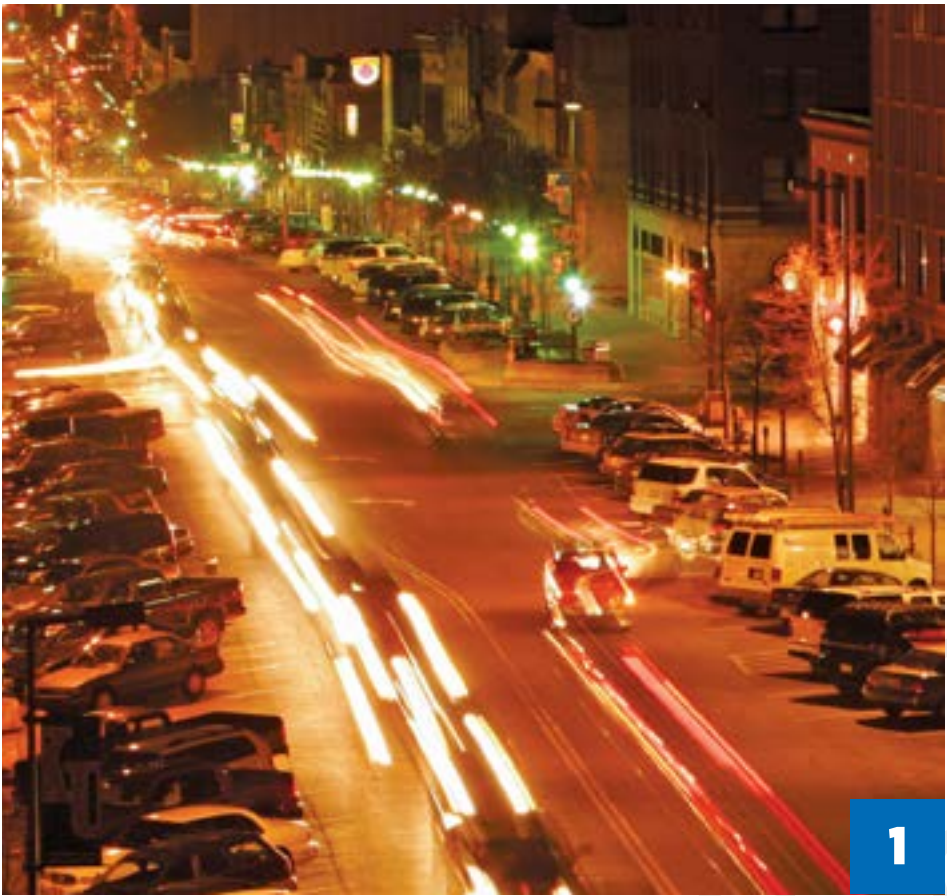
“NAMED ONE OF THE NINE ‘HIGHEST ACHIEVERS’ IN THE WORLD OF SPORTS”

SPORTS TRAVEL

1,000
UNIQUE SHOPPING & DINING OPTIONS
DOWNTOWN

75
LOCALLY OWNED BOUTIQUES & GALLERIES

50
CITY PARKS



1



2



3



4



5

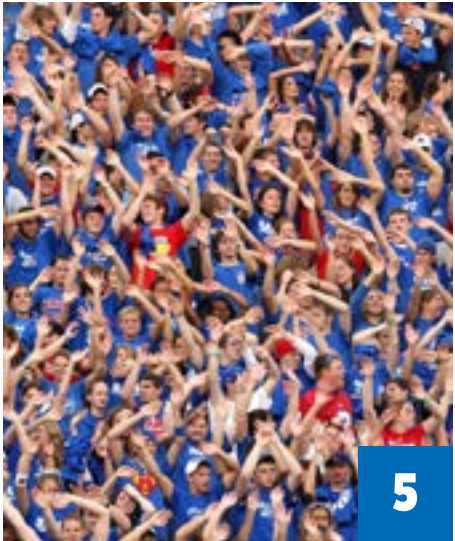


- 1. DOWNTOWN**
Less than a mile from campus, downtown Lawrence provides a uniquely historic yet modern setting with world-class restaurants, dynamic arts and energetic nightlife.
- 2. MUSIC**
Take a short walk on downtown’s main thoroughfare, Massachusetts Street, and you’ll be in the midst of what *The New York Times* called “the most vital music scene between Chicago and Denver.”
- 3. SHOPPING**
Iowa Street and 31st Street: Big box stores like Best Buy, Target, Walmart and others can all be found at this intersection in southwest Lawrence. Downtown: Trendy fashion, vintage bookstores and completely unique record stores.
- 4. DINING**
Steaks, seafood, Mexican, Greek, Italian, Spanish, Chinese, sushi, gourmet burgers, fish & chips, Thai, barbecue, vegetarian — you name it — Lawrence has it!
- 5. OUTDOORS**
The outdoor aquatic center downtown, Clinton Lake Park to the west and South Park on the east side provide a wide variety of opportunities for outdoor activities.

TRADITIONS



“YOU COME TO KU FOR THE TRADITION, AND YOU LEAVE A PART OF IT.”
DANNY MANNING



“GIVE THE WORLD THE BEST YOU’VE GOT AND THE BEST WILL COME BACK TO YOU.”
PHOG ALLEN

- 1. THE NICKNAME: JAYHAWK**
The University of Kansas is the home of the Jayhawk, a mythical bird with a fascinating history. Its origin is rooted in the historic struggles of Kansas settlers. The term “Jayhawk” was probably coined about 1848. Accounts of its use appeared from Illinois to Texas. The name combines two birds - the blue jay, a noisy, quarrelsome thing known to rob other nests, and the sparrow hawk, a stealthy hunter.
- 2. THE ALMA MATER**
In 1891, professor George Barlow Penny searched for a school song for the Glee and Mandolin Club to sing on its tour through Kansas to Denver and back. No one responded with an original song in answer to his appeals. Just before departure, he thought of the Cornell song “Far Above Cayuga’s Waters.” Hastily changing a few words, he gave it to the glee club men to sing on the trip. He did not expect the song to be used after their return, but “Crimson and the Blue” still goes on. The music is not Cornell’s but an old English folk tune, “Annie Lisle.”
- 3. CAMPANILE HILL**
Campanile Hill forms the picturesque backdrop for Memorial Stadium. On a sunny fall Saturday, the “Hill” is transformed into a congregating place for watching Jayhawk football, sunning and barbequing. Potter Lake, just to the southwest of Memorial Stadium and at the bottom of Campanile Hill, adds to the beauty of the Kansas campus.
- 4. THE K RING**
The K Ring symbolizes a uniquely shared experience between generations of varsity letter winners at the University of Kansas. As a Jayhawk you are expected to uphold tradition and retain the characteristics of a champion while continuing to create your own legacy.
- 5. WAVING THE WHEAT**
Since the early days of KU sports, it has been a ritual of Jayhawk fans to “wave the wheat” following every Kansas scoring drive in football. The tradition also extends to Allen Fieldhouse where fans “wave the wheat” when an opponent fouls out and at the conclusion of every Jayhawk victory. The ritual consists of fans waving their arms in the air, an activity which, when done by a large crowd, resembles a breezy Kansas wheat field.
- 6. THE ROCK CHALK CHANT**
The Rock Chalk Chant has been the battle cry of KU fans for more than 80 years. This strange, traditional chant, which is among the most famous of all college cheers, was started by E.H.S. Bailey, a professor of chemistry. On May 21, 1886, Bailey submitted the cheer to his club.



GABRIELLA DIMARCO
Senior
West Chester, Pa.
West Chester East HS

CAREER HONORS

2011-12: Athletic Director’s & Big 12 Commissioner’s Honor Rolls (Fall 2011, Spring 2012)... Academic All-Big 12 First Team...National Golf Coaches Association (NGCA) All-American Scholar Team.

2012-13: All-American Scholar Women’s Golf Coaches Association (WGCA)... Athletic Director’s & Big 12 Commissioner’s Honor Rolls (Fall 2012, Spring 2013)

2013-14: Athletic Director’s & Big 12 Commissioner’s Honor Rolls (Fall 2013).

AS A SENIOR (2014-15)

Competed in five events during the 2014 fall season... Recorded a career low 221 (71-74-76) at the Minnesota Invitational... Had highest placing at the Minnesota Invitational, finishing tied for sixth... Finished in the top-20 at the Marilynn Smith Sunflower Invitational, placing tied for 19th.

AS A JUNIOR (2013-14)

Competed in five events for the season... Had a top-10 finish at the UMKC Kangaroo Invitational (Sept. 30-Oct. 1)... Recorded a 79.4 per round average with eight rounds in the 70s... Shot lowest round of the year (72) at UMKC Kangaroo Invitational... Recorded a top-15 finish at



the Marilynn Smith Sunflower Invitational (Sept. 23-24), where she shot a 235 to tie for 12th.

AS A SOPHOMORE (2012-13)

Competed in 11 events on the year... Had three top-25 finishes... Best three-round total was 222 at Price’s “Give ‘Em Five” Intercollegiate (Oct. 8-10)... Shot her career-low with a 71 in the final round of the Price’s “Give‘Em Five” Intercollegiate... Finished seventh at the Marilynn Smith Sunflower Invitational with a three-round 228 as KU won the team title... Wrapped up the year with a tie for 27th in the Indiana Invitational where she shot a 233 and competed individually.

AS A FRESHMAN (2011-12)

Competed in eight-of-11 tournaments, including four as an individual... Participated in five-of-six spring events, including the Big 12 Championship... Had an 80.3 average in 24 rounds as a freshman... Best finish of the year was a tie for 24th at the Marilyn Smith Sunflower Invitational in Manhattan, Kansas, a three-round 233, her low score for a tournament... Twice shot a low round of 75; in the second round of the UCF Challenge in Orlando, Florida and in the final round of the Mountain View Collegiate in Tucson, Arizona.

HIGH SCHOOL

Coached by Rich Rivello at West Chester East High School in West Chester, Pennsylvania... A member of the National Honor Society as well as the Italian National Honor Society... All-Chestmont First Team selection her junior and senior seasons (2009-10)... second place at the state tournament her senior year and finished in the top-10 as a junior... Qualified for state all four years of high school... Also participated on the boys’ golf team in high school... Named Athlete of the Year her senior year... Played basketball for West Chester East HS as well.

PERSONAL

Full name is Gabriella Rose DiMarco... Born in Broomall, Pennsylvania... Daughter of Steve and Rose Mary DiMarco... Has one sibling, Giana... Advanced to the quarterfinal of the Pennsylvania State Amateur in August 2014... Home course is Penn Oaks Golf Club in West Chester, Pennsylvania... Dad played basketball at Lycoming College... Her first and only hole-in-one was at Duke University’s golf course when she was 13... An accounting and finance major.



KALLIE GONZALES
Freshman
Montgomery, Texas
Montgomery HS

AS A FRESHMAN (2014-15)

Competed in two events in the fall 2014... Best finish came at the Marylinn Smith Sunflower Invitational, where she tied for 35th with a 54-hole score of 238 (79-76-85)... Also participated at the Minnesota Invitational.

HIGH SCHOOL

Played for Coach Rusty Herridge at Montgomery High School in Montgomery, Texas... Comes from a strong high school program where she lettered in golf all four years.... Won MVP of the team in 2012 and 2013... Match play champion (2012, 2013 and 2014)... Helped Montgomery HS win District and Regional titles 2011-14... Montgomery was the 4A state champion team in 2011 and 2012 and runner-up in 2013 and 2014... Second-Team All-State selection in 2012 and 2013... Captain of the team in 2012, 2013 and 2014... First-Team All-



District honoree in 2012, 2013 and 2014... All-Greater Houston High School Golf Team in 2012 and 2013... First Team High School Golf Scoreboard (HSGSB) in 2012 and 2013... Recorded three top-10 finishes in American Junior Golf Association events.

PERSONAL

Full name is Kallie Hanna Gonzales... Born in Clovis, New Mexico... Has lived in Texas for 14 years... Parents are Johnny and Kris Gonzales... Has one sister, Keslie, one brother, Jonathan, and one sister-in-law, Jeannine... Named Academic All-State First Team for the Texas Girls Coaches Association in 2014... Father played college soccer at Hardin Simmons University... Brother, Jonathan, played soccer at Hartwick University in New York and club soccer at Texas A&M... Cousin, Trevor Gonzales, plays soccer at Notre Dame.... Cousin, Valerie

Gonzales, plays softball at Concordia University... Has two cats, Rory and Irish... Plans to study chemical engineering.

DiMarco at Kansas												
Tournament	Score		Place		Spring 2013							
Fall 2011					FSU Matchup Invitational							
Marilynn Smith Invitational	77-77-79--233		T24th		82-77-82--241							
Johnie Imes Invitational	81-79-81--241		T72nd		83-77-73--233							
Susie Maxwell Berning Classic	78-80-82--240		T79th		82-81-74--237							
UCF Challenge	80-75-82--237		T85th		85							
					89-89-84--262							
					89-89-84--262							
Spring 2011					Fall 2013							
Sir Pizza Cards Challenge	82-83-79--244		75th		Marilynn Smith Invitational							
Mountain View Collegiate	79-83-75--237		T79th		UMKC Kangaroo Invitational							
Knights and Pirates Invitational	76-86-80--242		T74th		72-83-75--230							
Big 12 Championship	89-80-84--253		50th		79-78-78--235							
					3M Lady Jaguar Intercollegiate (Individual)							
					87-82-79--248							
					84-81-78--243							
					77th							
Fall 2012					Fall 2014							
Dale McNamara Invitational	74-78-80--232		T50th		Marilynn Smith Invitational							
Marilynn Smith Invitational	74-75-79--228		7th		73-76-79--228							
Price’s “Give ‘Em Five” Intercollegiate	75-76-71--222		T15th		Minnesota Invitational							
Susie Maxwell Berning Classic	76-75-77--228		T40th		71-74-76--221							
Palmetto Intercollegiate	80-82-81--243		84th		72-78-81--231							
					75-75-80--230							
					80-76-84--240							
					T87th							

Year	Events	Rounds	Strokes	Low-Hi	Average	Wins	T-5	T-10	T-20	In 60’s	Low 54	Top Finish
2011-12	8	24	1,927	75-89	80.29	--	--	--	--	--	233	T24th
2012-13	11	31	2,444	71-89	78.83	--	--	1	3	--	222	7th
2013-14	5	15	1,191	72-87	79.4	--	--	1	2	--	230	T9th
2014-15	5	15	1,150	71-81	76.67	--	--	--	1	--	230	T6th
Total	29	85	6,712	71-89	78.96	--	--	2	6	--	221	T6th

Gonzales at Kansas

Tournament	Score	Place
Fall 2014		
Marilynn Smith Invitational	79-76-83--238	T35th
Minnesota Invitational	80-78-85--243	T67th

Year	Events	Rounds	Strokes	Low-Hi	Average	Wins	T-5	T-10	T-20	In 60’s	Low 54	Top Finish
2014-15	2	6	238	76-85	80.16	--	--	--	--	--	--	T35th
Total	2	6	238	76-85	80.16	--	--	--	--	--	--	T35th



CARLY HUMES

Redshirt Junior

The Woodlands, Texas

Heritage Academy



AS A SOPHOMORE (2013-14)

Competed in one event during the fall 2013 season, finishing tied for 55th at the 2013 UMKC Invitational (Sept. 30-Oct. 1)... Competed as an individual in the event and improved her score in each round, finishing with a 270 (93-91-86).

AS A REDSHIRT FRESHMAN (2012-13)

Competed in one event during the fall 2012 season, finishing 73rd at the Marilynn Smith Sunflower Invitational in Lawrence (Sept. 24-25)... Played as an individual in the event and improved every round with a 96-91-86--273.

AS A FRESHMAN (2011-12)

Took a redshirt in 2011-12.

HIGH SCHOOL

Coached by Josh Nahm and Tom Torrington at Heritage Academy in Hilton Head, South Carolina... Student of the Year in 2010... Received honor roll accolades in 2009 and 2010.

PERSONAL

Full name is Carly Kathryn Humes... Born in Fairfax, Virginia... Daughter of Larry and Deborah Humes... Home course is Willow Creek Golf Club in Spring, Texas... A fourth-generation Jayhawk (parents, grandparents and great-grandparents attended KU)... Attended the Hank Haney International Golf Academy for three years... Majoring in psychology with a minor in communications.

Humes at Kansas

Tournament	Score	Place
Fall 2012		
Marilynn Smith Invitational	96-91-86--273	73rd
Fall 2013		
UMKC Invitational	93-91-86--270	T55th
Fall 2014		
Marilynn Smith Invitational	86-88-85--259	60th

Year	Events	Rounds	Strokes	Low-Hi	Average	Wins	T-5	T-10	T-20	In 60's	Low 54	Top Finish
2012-13	1	3	273	86-96	90.5	--	--	--	--	--	273	73
2013-14	1	3	270	86-93	90	--	--	--	--	--	270	T55
2014-15	1	3	259	85-88	86.3	--	--	--	--	--	259	60th
Total	3	9	802	85-96	89.1	--	--	--	--	--	259	T55



YUPAPORN KAWINPAKORN

Junior

Samutprakan, Thailand

Praphamontree II School

CAREER HONORS

2012-13: Athletic Director's & Big 12 Commissioner's Honor Rolls (Fall 2012, Spring 2013), Big 12 All-Tournament Team.

2013-14: Athletic Director's & Big 12 Commissioner's Honor Rolls (Fall 2013, Spring 2014), All-Big 12 Conference Team, Big 12 All-Tournament Team and Academic All-Big 12 First Team.

2014-15: Big 12 Golfer of the Month (October, 2014).

AS A JUNIOR (2014-15)

Competed in all five events for KU in the fall... Named Big 12 Golfer of the Month for October... Finished second in two tournaments, the Ron Moore Women's Intercollegiate with a score of 215 (71-72-72) and the Palmetto Intercollegiate 213 (69-76-68)... Led the team in average stroke per tournament in the fall with a 73.1.

AS A SOPHOMORE (2013-14)

Competed in all 13 events for Kansas... 2014 All-Big 12 selection... Big 12 All-Tournament Team, finishing tied for second... Academic All-Big 12 First Team selection... Led KU with a 74.46 scoring



average, breaking her own KU single-season record (74.83 in 2012-13)... Had a team-best 12 rounds of even par or better... KU counted 33 of her 36 rounds (91.7 percent), a team best... Shot five rounds in the 60s, including two at the Big 12 Championship (April 25-27) and one at the NCAA Central Regional (May 8-10)... Best finish was second three times: at the Diane Thomason (Oct. 12-13) in Iowa City, Iowa; at the Cardinal Cup (Sept.16-17) in Simpsonville, Kentucky; and at the Big 12 Championship (April 25-27) at the UT Golf Club in Austin, Texas... Best 54-hole total (211) came at Big 12 Championship which also set the KU 54-hole record... Led KU with the lowest 54-hole total in seven of the 13 events.

AS A FRESHMAN (2012-13)

Set the school season per-round average record with a 75.42 average... Competed in all five fall events for Kansas... Finished first or second for Kansas in nine of 11 events... Claimed her first individual collegiate title at Price's "Give Em' Five" Intercollegiate (Oct. 8-10), shooting a three-round total score of 213 (69-71-73)... Her 213 in Las Cruces was her best 54-hole score of 2012-13... Her

69 in the first round established her career low... Shot 75 or better in 16 rounds, including six rounds of par or under par... Earned Big 12 All-Tournament honors by finishing tied for 10th at the Big 12 Championship (April 19-21) with a three-round 229 (+11).

HIGH SCHOOL

Coached by Somsaksri S. Srisuwan... Attended Praphamontee II School in Samutprakan, Thailand.

PERSONAL

Full name is Yupaporn Kawinpakorn... Nickname is "Mook"... Born in Samutprakan, Thailand... Parents are Samai and Apicha Kawinpakorn... Shot a career-low 66 in 2006 in the Philippines... Participated for the Thai National Team at the Sea Games winning a team gold medal in 2007 and a silver medal (team and individual) in 2009... Won the 2008 Malaysia Amateur... In 2010, won the Thailand Amateur Ladies Open and Thailand Amateur Stroke Play individual titles... Majoring in sport management.

Kawinpakorn at Kansas

Tournament	Score	Place	2013 Challenge at Onion Creek	74-71-73--218	7th
Fall 2012			Diane Thomason Invitational	78-70-75--223	2nd
Marilynn Smith Invitational	73-73-77--223	5th	Palmetto Intercollegiate	75-76-69--220	T7th
Price's "Give 'Em Five" Intercollegiate	69-71-73--213	1st	Spring 2014		
Susie Maxwell Berning Classic	78-80-82--240	T79th	FSU Matchup Invitational	79-80-75--234	T45th
UCF Challenge	71-75-81--227	T30th	3M Lady Jaguar Intercollegiate	77-81-72--230	T19th
Palmetto Intercollegiate	79-73-75--227	T32nd	Briar's Creek Invitational	776-75-72--223	T15th
Spring 2013			SMU Invitational	71-76--147	T7th
FSU Matchup Invitational	80-74-72--226	T26th	Lady Buckeye Invitational	76-74-77--227	T6th
Sir Pizza Terrapin Challenge	72-72-81--225	T12th	Big 12 Championship	69-73-69--211	T2nd
Clover Cup	75-75-79--229	T38th	NCAA Regional	75-69-80--224	T24th
Jayhawk-Cornhusker Challenge	82	T9th	NCAA Championship	83-71-75-70--299	T84th
Briar's Creek Invitational	779-77-76--232	T25th	Fall 2014		
Indiana Invitational	78-73-74--225	8th	Marilynn Smith Invitational	74-69-79--222	T5th
Big 12 Championships	76-77-76--229	10th	Minnesota Invitational	74-82-73--229	T28th
Fall 2013			Lady Paladin Invitational	75-73-70--218	T10th
Cardinal Cup	72-68-73--213	T2nd	Ron Moore Women's Intercollegiate	71-72-72--215	2nd
Marilynn Smith Invitational	72-74-89--235	T12th	Palmetto Intercollegiate	69-76-68--213	2nd

Year	Events	Rounds	Strokes	Low-Hi	Average	Wins	T-5	T-10	T-20	In 60's	Low 54	Top Finish
2012-13	11	28	2,109	69-81	75.32	1	2	4	5	1	213	1st
2013-14	13	39	2,904	68-89	74.46	--	3	7	7	5	211	2nd
2014-15	5	15	1,097	68-82	73.13	--	3	4	4	3	213	2nd
Total	29	85	6,339	68-89	74.57	1	8	15	19	9	211	1st



MINAMI LEVONOWICH
Senior
Houston, Texas
Heritage Academy/Kennesaw State

CAREER HONORS
2012-13: Athletic Director’s & Big 12 Commissioner’s Honor Rolls (Spring 2013).
2013-14: Athletic Director’s & Big 12 Commissioner’s Honor Rolls (Fall 2013, Spring 2014), Academic All-Big 12 First Team.

AS A SENIOR (2014-15)
Competed in four events in the fall... Finished in the top-10 at the Ron Moore Women’s Intercollegiate by placing eighth with an overall score of 223 (73-75-75).

AS A JUNIOR (2013-14)
Competed in all 13 events... 2014 Academic All-Big 12 First Team selection... Led Kansas at the NCAA Central Regional (May 8-10), tying for 19th with a 222 (+6), which tied her low for 54 holes in her KU career... KU counted 31 of her 39 rounds played for 79 percent... Had two rounds of even par, including the second round at the NCAA Central Regional... Best finish of the season was a tie for seventh at the Diane Thomason Invitational (Oct. 12-13) in Iowa City, Iowa... Placed eighth at the Marilynn Smith Sunflower Invitational (Sept.23-24) at Colbert Hills Golf Club in Manhattan, Kansas... Shot a 222 (+6) at The Palmetto Intercollegiate (Oct. 27-28) in Kiawah Island, South Carolina... Shot lowest round of her KU career (71) at the



NCAA Championship (May 20-23) in Tulsa... Recorded two eagles in NCAA Championship competition with one at the NCAA Regional and the other at the NCAA Championship.

AS A SOPHOMORE (2012-13)
Transferred from Kennesaw State and did not compete until the spring... Tied for second at the Jayhawk-Cornhusker Challenge (March 20) in Lawrence, Kansas, with a 79... Placed 16th in the Big 12 Championship (April 19-21) in Rhodes, Iowa, with a three-round 232... Shot a low-round 72 in her first round for KU at the Sir Pizza Cards Challenge (Feb. 25-26).

AS A FRESHMAN (2011-12 at Kennesaw State)
Competed in five events at Kennesaw State... Was in the lineup for the first four tournaments of the season with a 78.5 scoring average... Tied for 34th with a three-round +15 at the Lady Jaguar Invitational (March 16-18) in Augusta, Georgia... Shot best 18 holes, 75, in her final round of the season at the Lady Jaguar Invitational... Kennesaw State went on to win the Atlantic Sun Conference championship and participate in the NCAA West Regional.

HIGH SCHOOL
Coached by Josh Nahm at Heritage Academy in Hilton Head,

South Carolina... A member of the National Honor Society in 2010-11... On the Scholastic All-American Team Honor Roll.

PERSONAL
Full name is Minami Ann Levonowich... Born in London, England, and moved to the Hank Haney Academy in Hilton Head, South Carolina... Calls Houston home... Parents are Peter and Yuri Levonowich... Had an outstanding summer in 2014 qualifying for the U.S. Public Links Championship and competing as an amateur in the LPGA Meiji Cup in Hokkaido, Japan... Rated as the No. 69 player in the class of 2011 by *Golfweek Magazine*... Had a 25th-place finish at the 2010 Callaway Junior World Championship... Recorded a fourth-place finish at the 2010 AJGA Rome Classic... *Golfweek Magazine* National Player of the Week in August 2011 after winning the Golfweek Junior Series Tournament and earning a place in the Golfweek Junior Invitational Championship... Finished 45th out of 115 golfers at the Colorado Women’s Open in June 2012... Participated in the Women’s Western Golf Association Amateur Championship in 2012 where she shot rounds of 76-74 to qualify for championship flight match play... Father played soccer at the University of Wisconsin-Parkside... Major is journalism.

Levonowich at Kansas														
Tournament	Score						Place		Spring 2014					
Spring 2013									FSU Match Up				84-76-74--234	T45th
Sir Pizza Terrapin Challenge	72-78-80--230						T35th		3M Lady Jaguar Intercollegiate				80-78-79--237	T39th
Clover Cup	79-79-81--239						76th		Briar's Creek Invitational				75-80-75--230	T43rd
Jayhawk-Cornhusker Challenge	79						T2nd		SMU Invitational				76-78--154	T28th
Briar's Creek Invitational	79-83-81--243						T75th		Lady Buckeye Invitational				79-78-78--235	T31st
Indiana Invitational	77-79-73--229						16th		Big 12 Championship				76-75-76--227	T26th
Big 12 Championship	80-73-79--232						16th		NCAA Regional				77-72-73--222	T19th
									NCAA Championship				74-71-80-77--302	T98th
Fall 2013									Fall 2014					
Cardinal Cup	74-74-76--224						T14th		Marilynn Smith Invitational				79-85-77--241	T44th
Marilynn Smith Invitational	78-76-78--232						8th		Lady Paladin Invitational				74-73-80--227	T36th
2013 Challenge at Onion Creek	80-75-75--230						37th		Ron Moore Women's intercollegiate				73-75-75--223	8th
Diane Thomason Invitational	76-76-75--227						T7th		Palmetto Intercollegiate				74-80-77--231	T46th
Palmetto Intercollegiate	74-72-76--222						T11th							
Year	Events	Rounds	Strokes	Low-Hi	Average	Wins	T-5	T-10	T-20	In 60's	Low 54	Top Finish		
2012-13	6	16	1,252	72-83	78.25	--	1	1	2	--	229	T2nd		
2013-14	13	39	2,976	71-84	76.31	--	--	2	5	--	222	T7th		
2014-15	4	12	922	73-85	76.83	--	--	1	1	--	223	8th		
Total	23	64	4,927	71-84	77	--	1	4	8	--	222	T2nd		



PORNVIPA SAKDEE
Sophomore
Kamphaeng Phet, Thailand
Watchara Wittaya School

AS A SOPHOMORE (2014-15)
Competed in all five events during the fall... Won her first event as a Jayhawk at the Marilynn Smith Sunflower Invitational with a career-low 54-hole score of 216 (70-73-73)... Shot a career-low round 68 at the Lady Paladin Invitational...Finished third at the Ron Moore Women’s Intercollegiate with a 217 (70-75-72)... Had four rounds of par or under during the fall 2014 season.

AS A FRESHMAN (2013-14)
Played in all 13 events for the Jayhawks... Averaged 76.54 with 39 rounds scored... Third on the team with four rounds of even par or better... KU counted 30-of-39 rounds played for 76.9 percent... Finished in the top 20 of four events... Finished 14th at the Challenge at Onion Creek (Sept. 30-Oct. 1) with a 221 (+1)... Best finish of the year was at the Palmetto Intercollegiate (Oct. 27-28) where she tied for fourth with a 217 (+1)... Had best round of the year, 69 (-3), in the final round of the Palmetto Intercollegiate... Tied for eighth at the 3M Lady Jaguar Intercollegiate (March 14-16)



with a 225 (+9)... Tied for KU’s second-best score at the Big 12 Championship (April 25-27) with a 211 (+11), which tied for 26th place.

HIGH SCHOOL
Played at Watchara Wittaya School in Kamphaeng Phet, Thailand... A top-50 player according to the World Junior Golf Rankings... Ranked No. 37 in the world and No. 5 in her class after claiming top-medalist honors at the TOYA Polish Junior Golf Championship in July 2012, a World Junior Golf Series event in Poland... Placed third at both the Thailand Ladies Amateur and Thailand Ladies Open... Previous medalist of the Thailand Northern Junior Golf Championship and was runner-up at the Hank Haney Junior Golf Championship... As a 16-year-old in 2011, bolted to the top of the leader board at the Malaysian Ladies Amateur with a one-under 70 before finishing in the top-five... Second runner-up of Thailand Junior Golf Championship in Phuket, Tailand...Two-time certification of the excellent academic results in high school.

PERSONAL
Nickname is “Faii”... Born in Kamphaeng Phet, Thailand... Daughter of Viroj and Siriporn... Has two younger siblings, Kanatip and Sasikarn... Majoring in business/management and leadership.

Sakdee at Kansas												
Tournament	Score						Place					
Fall 2013												
Cardinal Cup	75-74-75--224						T14th		SMU Invitational 79-74--153 T23rd			
Marilynn Smith Invitational	83-78-81--242						T32nd		Lady Buckeye Invitational 77-86-74--237 T38th			
2013 Challenge at Onion Creek	70-77-74--221						14th		Big 12 Championship 76-72-79--227 T26th			
Diane Thomason Invitational	80-76-81--237						T57th		NCAA Regional 77-75-79--231 T51st			
Palmetto Intercollegiate	74-74-69--217						T4th		NCAA Championship 89-77-74-72--312 T122nd			
Spring 2014												
FSU Match Up	75-74-75--224						T40th		Marilynn Smith Invitational 70-73-73--216 1st			
3M Lady Jaguar Intercollegiate	81-70-74--225						14th		Minnesota Invitational 77-77-75--229 T28th			
Briar's Creek Invitational	81-74-72--227						T31st		Lady Paladin Invitational 68-79-80--227 T36th			
Ron Moore Women's Intercollegiate 70-75-72--217 3rd												
Year	Events	Rounds	Strokes	Low-Hi	Average	Wins	T-5	T-10	T-20	In 60's	Low 54	Top Finish
2013-14	13	39	2,985	69-89	76.54	--	1	2	4	1	217	T4th
2014-15	5	15	1,112	68-80	74.13	1	2	2	3	1	216	1st
Total	18	54	4,097	68-89	75.96	1	3	4	7	2	216	1st



MACKENZIE SEXE

Freshman
Savage, Minn.
Prior Lake HS



AS A FRESHMAN (2014-15)

Competed in one event during the fall 2014 season, finishing tied for 57th at the Marilyn Smith Sunflower Invitational... Recorded a three-round 255 (87-83-85) in her lone tournament of the fall.

HIGH SCHOOL

Played for coach Corey Carney at Prior Lake High School in Savage, Minnesota, lettering all four years... Won the South Suburban Conference in stroke average in spring 2014.... Four-time All-Academic Team member in the South Suburban Conference, from 2011-14... Voted most valuable player at Prior Lake HS, three times, from 2012-14... All-Conference Honorable Mention in the South Suburban Conference in 2011... South Suburban Conference Rookie of the Year in 2011... Voted team captain her junior and senior seasons... Finished 12th at the High School Class AAA State

Tournament in 2012... Finished 10th the next year in the High School Class AAA State Tournament in 2013... Conference tournament runner-up in 2012... Conference champion in 2014... National Honor Society Member from 2012-14... Board Scholar from 2011-14... National Business Honor Society from 2013-14.

PERSONAL

Full name is MacKenzie Jo Sexe... Nickname is “Kenzie”... Born in Topeka, Kansas... Parents are Kendra and Ed Sexe... Has a younger brother, Luke... Home course is The Wilds Golf Club in Prior Lake, Minnesota... Competed in the Women’s South Atlantic Amateur in 2014... Helps her community by being a part of the Junior Optimist Club and assisting with the First Tee program... Optimist Club essay contest winner in 2014... Plans to study business and pre-medicine.

Sexe at Kansas

Tournament	Score	Place
Fall 2014		
Marilynn Smith Invitational	87-83-85--249	T57th

Year	Events	Rounds	Strokes	Low-Hi	Average	Wins	T-5	T-10	T-20	In 60’s	Low 54	Top Finish
2014-15	1	3	255	83-87	85	--	--	--	--	--	255	T57th
Total	1	3	255	83-87	85	--	--	--	--	--	255	T57th



MACKENZIE THAYER

Junior
Garden City, Kan.
Garden City HS



CAREER HONORS

2013-14: Athletic Director’s & Big 12 Commissioner’s Honor Rolls (Fall 2013).

AS A JUNIOR (2014-15)

Competed in two events during the fall 2014... Recorded a career-best score at the Marilyn Smith Sunflower Invitational with a 232 (82-74-76)... Tied her KU career-low round twice in the fall in the second round of the Marilyn Smith Sunflower Invitational and the second round of the Lady Paladin Invitational.

AS A SOPHOMORE (2013-14)

Competed in two events as an individual... Recorded a top-25 finish at the UMKC Invitational (Sept. 30-Oct. 1) where she finished tied for 21st (238)... Improved her stroke average from 82.5 her freshman year to 79.5 her sophomore campaign... Shot the low round of her career, 74, at the UMKC Invitational.

AS A FRESHMAN (2012-13)

Competed in two events as an individual... Finished 57th at the Marilyn Smith Sunflower Invitational (Sept. 24-25) in Lawrence... Tied for seventh in the Jayhawk-Cornhusker Challenge (March 20) in Lawrence with an 81.

HIGH SCHOOL

Played for Lloyd Tiffany at Garden City High School in Garden City, Kansas... Won 22 tournaments during her high school career... Included was the team 6A High School State Championship at Shadow Glen Country Club in October 2011... Set the state tournament nine-hole record by shooting 5-under as a senior, breaking her own record of 3-under set the previous year... Finished sixth in state her freshman year and third her junior year... Named the girls golf Western Athletic Conference (WAC) most valuable player all four years in high school... Honored as the *Garden City Telegram* Player of the Year her junior and senior years and an all-area golfer by the publication all four years during high school...

Received the Marine Corps “Best Athlete” honor her senior year at Garden City... A Kansas Honors Scholar.

PERSONAL

Full name is Mackenzie Ann Thayer... Born in Garden City, Kansas... Parents are Sean and Ronell Thayer... Has an older sister, Allison, and a younger brother, Cooper... Grandmother, father, aunt, uncle and sister all attended KU... Father played golf at Kansas from 1989-90 and went on to play professionally... Plans to study business.

Thayer at Kansas

Tournament	Score	Place	Fall 2014	82-74-76--232	T26th
Fall 2012			Marilynn Smith Invitational	84-74-75--233	T82nd
Marilynn Smith Invitational	83-83-83--249	57th			
Spring 2013					
Jayhawk-Cornhusker Challenge	81	T7th			
Fall 2013					
Cardinal Cup	77-82-80--239	53rd			
UMKC Kangaroo Invitational	83-74-81--238	T21st			

Year	Events	Rounds	Strokes	Low-Hi	Average	Wins	T-5	T-10	T-20	In 60’s	Low 54	Top Finish
2012-13	2	4	330	81-83	82.5	--	--	1	1	--	249	T7th
2013-14	2	6	477	74-83	79.5	--	--	--	--	--	238	T21st
2014-15	2	6	474	74-83	79	--	--	--	--	--	232	T26th
Total	6	16	1,281	74-84	80.1	--	--	1	1	--	232	T7th



MICHELLE WOODS

Senior
Manhattan, Kan.
Manhattan HS

CAREER HONORS

2013-14: Athletic Director’s & Big 12 Commissioner’s Honor Rolls (Fall, 2013).
2012-13: Athletic Director’s & Commissioner’s Honor Rolls (Fall 2012, Spring 2013)
2011-12: Athletic Director’s and Big 12 Commissioner’s Honor Rolls (Fall 2011, Spring 2012).

AS A SENIOR (2014-15)

Competed in all five events during the fall 2014... Shot a career-best 222 (75-71-76) and career-tying best, fifth place at the Marilynn Smith Sunflower Invitational... Tied for 28th at the Minnesota Invitational with a score of 231 (81-74-76).

AS A JUNIOR (2013-14)

Competed in five events for the Jayhawks and recorded two top-20 finishes... Had her best season scoring average while at KU at 78.47 per round... Finished tied for 16th at the Cardinal Cup (Sept. 16-17) with a 79-70-76--225 (+9)... Her second-round 70 at the Cardinal Cup set her career-low round while at KU... Placed tied for 17th at the Marilynn Smith Sunflower



Invitational in Manhattan, Kansas, with an 82-80-75--237 (+21)... Tied her career-low 70 at the Challenge at Onion Creek (Sept. 30-Oct. 1) finishing tied for 33rd (80-79-70--229)... Included was a hole-in-one during her opening round... Eight of 12 rounds were in the 70’s.

AS A SOPHOMORE (2012-13)

Competed in three events on the year with an 81.14 per round average in seven rounds... Tied for 58th in the Florida State Match Up (Feb. 15-17) in Tallahassee, Florida, with a three-round score of 244 (+28)... Finished tied for fifth with an 80 in the Jayhawk-Cornhusker Challenge (March 20) in Lawrence... Tied for 45th at the Marilynn Smith Sunflower Invitational (Sept. 24-25) in Lawrence with a 244 (+28).

AS A FRESHMAN (2011-12)

Competed in six events for Kansas as a freshman... Averaged 80.3 in 18 rounds... Highest finish of 2011-12 was a tie for 43rd at the Marilynn Smith Sunflower Invitational (Sept. 26-27) in Manhattan, Kansas, where she shot a 240 (+24)... Lowest 54-hole total was a 233 (+14) at the MountainView Collegiate

(March 23-24) in Tucson, Arizona, where she tied for 68th.

HIGH SCHOOL

Played for Chris George at Manhattan High School in Manhattan, Kansas... A multi-sport athlete who lettered in golf for four years, basketball for four years and swimming for two years... Finished in the top-10 at the state golf tournament all four years of high school: ninth as a freshman, 10th as a sophomore, seventh as a junior and second as a senior... Named Student-Athlete of the Week in 2009 by a local radio station (KMAN)... Manhattan HS was the 2009 Kansas state golf team champion... Named KMAN Student-Athlete of the Week during her junior year... A 2011 Wendy’s High School Heisman winner... A four-year member of the honor roll at Manhattan HS.

PERSONAL

Full name is Michelle Lynn Woods... Born in Wichita, Kansas... Parents are Denny and Tonya Woods... Has twin brothers, David and Scott... Majoring in communications.

Woods at Kansas												
Tournament	Score	Place										
Fall 2011												
Dale McNamara Invitational	85-78-82--245	69th										
Marilynn Smith Invitational	79-78-83--240	T43rd										
Johnnie Imes Invitational	85-73-83--241	T72nd										
Spring 2012												
UCF Challenge	78-78-83--239	T90th										
MountainView Collegiate	79-79-75--233	T68th										
Knights and Pirates Invitational	84-77-86--247	83rd										
Fall 2012												
Marilynn Smith Invitational	82-80-82--244	T45th										
			Spring 2013									
			FSU Match Up Invitational									
			77-80-87--244									
			T58th									
			Fall 2013									
			Cardinal Cup									
			79-70-76--225									
			T16th									
			Marilynn Smith Invitational									
			82-80-75--237									
			T17th									
			2013 Challenge at Onion Creek									
			80-79-70--229									
			T33rd									
			Diane Thomason Invitational									
			82-77-76--235									
			T34th									
			Fall 2014									
			Marilynn Smith Invitational									
			75-71-76--222									
			T5th									
			Minnesota Invitational									
			81-74-76--231									
			T28th									
			Lady Paladin Invitational									
			84-74-75--233									
			T59th									
			Ron Moore Women’s Intercollegiate									
			77-74-80--231									
			34th									
			Palmetto Intercollegiate									
			72-82-82--236									
			T69th									

Year	Events	Rounds	Strokes	Low-Hi	Average	Wins	T-5	T-10	T-20	In 60's	Low 54	Top Finish
2011-12	6	18	1,445	73-86	80.2	--	--	--	--	--	233	T43rd
2012-13	3	7	568	77-87	81.14	--	1	1	1	--	244	T5th
2013-14	5	15	1,177	70-82	78.47	--	--	--	2	--	225	T16th
2014-15	5	15	1,153	71-84	76.22	--	1	1	1	--	222	T5th
Total	19	55	4,343	70-87	78.96	--	2	2	4	--	222	T5th



PITSINEE WINYARAT

Freshman
Bangkok, Thailand
Bromsgrove International School Thailand

AS A FRESHMAN (2014-15)

Competed in two events for the Jayhawks during the fall 2014 season... Best finish came at the Marilynn Smith Sunflower Invitational, finishing 47th with a score of 222 (81-83-79)... Also competed at the Ron Moore Women’s Intercollegiate shooting a 238 (80-79-79) and placing tied for 54th.

HIGH SCHOOL

Competed at Bromsgrove International School in Bangkok for her high school career... Bromsgrove is located within the grounds of a 36-hole golf course and is home of junior golf in Thailand.

PERSONAL

Nickname is “Lizzie”... Parents are Pisant and Janthana Winyarat... Member of the Thailand Ladies National Team in 2012... Ranked No. 30 in the 2015 Recruiting Class in *Golfweek* Rankings... Won a bronze medal for individual and



silver medal for Bangkok Team at 41st Chaing Mai National Games... Won a gold medal for Bangkok Team at 34th Phrae Student National Games... Won a gold medal for Bangkok Team at 29th Maha Srakham Junior National Games... 2013 runner-up finish at Callaway World Match Play.

Winyarat at Kansas												
Tournament	Score	Place										
Fall 2014												
Marilynn Smith Invitational	81-83-79--222	47th										
Ron Moore Women’s Intercollegiate	80-79-79--238	T54th										

Year	Events	Rounds	Strokes	Low-Hi	Average	Wins	T-5	T-10	T-20	In 60's	Low 54	Top Finish
2014-15	2	6	481	79-83	80.17	--	--	--	--	--	222	47th
Total	2	6	481	79-83	80.17	--	--	--	--	--	222	47th



ERIN O’NEIL
HEAD COACH
11th Season



O’NEIL FILE

Alma Mater Georgia, 1997

COACHING HISTORY

2004-present Kansas
2000-04 Auburn (Assistant)

KU ACHIEVEMENTS

- 11 career team titles
- 11 NGCA All-American Scholars
- 17 Academic All-Big 12 Conference Honorees
- 10 tournament champions
- In 2014 , coached KU to Its first NCAA Championship appearance since 1990 and its first-ever NCAA Regional bid

Erin O’Neil is in her 11th season as head coach of the Kansas women’s golf team.

O’Neil came to KU in 2004 after four seasons as an assistant at Auburn. In her first season as head coach, O’Neil led the Jayhawks to a first-place finish at the Marilyn Smith Sunflower Invitational, the program’s first team title since 2000. Under O’Neil, Kansas has won 11 tournaments, including two in the fall 2013. Additionally, O’Neil has guided Kansas to 68 top-10 finishes and 41 in the top five.

O’Neil coached KU to a historical season in 2013-14. The Jayhawks finished the 2014 Big 12 Championship tied for fourth place, the best conference finish ever for KU since it finished third in 1992 in the Big Eight Championship. She helped lead the Jayhawks to their first ever NCAA Regional appearance in school history. The Jayhawks not only qualified, but finished in the top five in the 2014 NCAA Central Regional tournament. After a strong showing in regionals ,they also qualified for the NCAA Championship for the second time in school history, the first time since 1990.

O’Neil has overseen the development of several individual champions while at KU, including former Jayhawk Meghan Potee (2013 Marilyn Smith Invitational) as well as Yupaporn Kawinpakorn (2012 Price’s “Give `Em Five” New Mexico State Invitational) and recent graduates Grace Thiry (2010 Marilyn Smith Invitational), Emily Powers (2008 Marilyn Smith Invitational, U.S. Open qualifier), Annie Giangrosso (2006 Kansas Women’s



Amateur champion), Meghan Gockel (Duramed Collegiate Invitational 2009), Amanda Costner (2005 Lady Boilermaker Champion, All-Big 12 First Team, NCAA Regional qualifier, 2007 Big 12 Champion and 2007 Big 12 Sportsman of the Year) and Chelsey Pryor (2005 ORU Shootout winner).

While at Auburn, O’Neil helped lead the Tigers to three top-10 NCAA Championship team finishes, including a tie for second in 2002. She coached four All-Americans and seven all-conference selections during her stint there. Before joining the Auburn program, O’Neil played professionally for three years on the Futures Tour and the Kosaido Ladies Asian Tour.

O’Neil was a four-year letterwinner at the University of Georgia from 1994-97 and led the Bulldogs to a pair of SEC Championships in 1994 and 1997. She was a three-time All-SEC selection from 1994-96 and earned SEC Freshman of the Year honors in 1994. She won the 1995 Auburn Tiger-Derby Invitational and shot a 66 at the 1997 SEC Championship, the second-lowest round in UGA history.

O’Neil was listed on the Director’s Honor Roll for six quarters while at Georgia and was a two-time SEC Academic Honor Roll selection in 1996 and 1997. As an amateur, O’Neil qualified for seven United States Amateur Championships, as well as two United States Opens.



KATY NAHM
ASSISTANT COACH
Fourth Season



NAHM FILE

Alma Mater . . . Coastal Carolina, 2007
Husband. Josh

COACHING HISTORY

2011-present Kansas (Assistant)
2009-11 Hank Haney Academy
2007-09 . Coastal Carolina (Assistant)

Katy (Heher) Nahm came to Kansas in July 2011 as an assistant women’s golf coach. Prior to KU, Nahm spent two years as an instructor/coach at the Hank Haney International Junior Golf Academy in Hilton Head Island, South Carolina. One of her strong areas is working with players on their short games.

Since Nahm came to Kansas, the Jayhawks have won six tournaments, had 14 top-five finishes and 27 top-10 finishes. Under the development of Nahm, six Jayhawks were able to improve their average stroke score in the 2013-14 season. She also helped the Jayhawks qualify for regionals and nationals in the 2013-14 season.

A member of the PGA, prior to Hank Haney’s Academy, Nahm was an assistant coach at Coastal Carolina from 2007-09 and helped the team to a Big South Conference Championship in 2009.

Nahm played golf at Coastal Carolina and was a three-time All-Big South selection, as well as the league’s freshman of the year, in 2004. In her sophomore season the Lady Chanticleers won the conference team title and she was the individual runner-up.

Nahm was a four-time All-American Scholar, a two-time All-Big South Academic selection and played in a school-record 127 rounds.

The Nichols, South Carolina native graduated with a degree in marketing from Coastal Carolina in 2007 and earned her master’s in business administration from Coastal Carolina in 2009.

She is married to Josh Nahm, a golf instructor at Firekeeper Golf Course in Mayetta, Kansas, just north of Topeka, and former instructor at the Hank Haney International Junior Academy in Hilton Head, South Carolina.



SUPPORT STAFF



DEBBIE VAN SAUN
SENIOR ASSOCIATE AD/
SWA/GOLF ADMINISTRATOR



SANDY ARBUTHNOT
ADMINISTRATIVE ASSISTANT



AARON CARBUHN
SPORTS NUTRITIONIST



BILL COWGILL
ASSOCIATE DIRECTOR OF SPORTS
MEDICINE



SHERIECE SADBERRY
COUNSELING AND SPORT
PSYCHOLOGIST



PATRICIA DIETZ
ASSISTANT STRENGTH AND
CONDITIONING COACH

UNIVERSITY CHANCELLOR



DR. BERNADETTE GRAY-LITTLE
FIFTH YEAR

Since arriving at the University of Kansas in 2009, Bernadette Gray-Little has advanced KU's mission of lifting students and society by educating leaders, building healthy communities, and making discoveries that change the world.

Through the Bold Aspirations strategic plan, KU is changing the way it prepares students for success. It's fostering research and scholarship across all disciplines, and sharing the benefits of a flagship university with the state and world.

Gray-Little led the effort to create new admission standards for the University of Kansas. These new standards take effect in 2016 and will give students and families a more accurate picture of what it takes to be successful at a research university.

Under Chancellor Gray-Little's leadership, the university has also revamped financial aid, creating four-year renewable scholarships and expanding the Jayhawk Generations Scholarship. And it has launched its first university-wide curriculum, the KU Core, which incorporates both classes and experiences, making KU a leader among its national peers.

Gray-Little has also been instrumental to Far Above: The Campaign for Kansas, KU Endowment's \$1.2 billion comprehensive fundraising campaign. Additionally, the university's Changing for Excellence initiative is making administrative operations more efficient, with the savings being invested in education and research.

As chancellor, Gray-Little is the chief executive officer of the university, overseeing campuses in Lawrence, Kansas City, Overland Park, Salina and Wichita, as well as research and educational centers in Garden City, Hays, Parsons, Pittsburg, Topeka and Yoder.

Gray-Little was one of four university leaders selected to represent the Association of Public and Land-grant Universities at a White House summit on math and science education in January 2010. She is also on the board of trustees for the Online Computer Library Center, an international organization dedicated to expanding public access to information and research.

Prior to becoming KU's 17th Chancellor, Gray-Little held leadership positions at the University of North Carolina-Chapel Hill, including executive vice chancellor and provost.



GRAY-LITTLE FILE

Alma Mater Marywood College, 1966
. St. Louis University, 1968, 1970
Husband. Shade Keys Little

PROFESSIONAL HISTORY

2009-present. Kansas (Chancellor)
2007-09. North Carolina (Executive Vice
Chancellor and Provost)
2004-06 . . . North Carolina (Dean Arts & Sciences)
2001-04 . . . North Carolina (Exec. Vice Provost)
1999-2001. . . North Carolina (Sr. Assoc. Dean)
1993-98 . . . North Carolina (Psychology Chair)
1982-93 North Carolina (Director,
Psychology Graduate Program)



DIRECTOR OF ATHLETICS



DR. SHEAHON ZENGER
FOURTH YEAR

ZENGER FILE
Alma Mater.....Kansas State, 1988, 1992
..... Kansas, 1996
Wife.....Pam
Children..... Luke, Abby, Jake

ADMINISTRATIVE HISTORY

2011-presentKansas (Athletic Director)
2005-11Illinois State (Athletic Director)
2001-05Kansas State (Assoc. Athletic Dir.)

COACHING HISTORY

1998-2000 . Wyoming (Assistant Head Coach)
1997 Wyoming (Rec. Coord.)
1996 South Florida (Rec. Coord.)
1989-92 Kansas State (Dir. Football Ops)
1988 Drake (Assistant Coach)
1987 Manhattan HS (Head Coach)

Dr. Sheahon (SHAY-un) Zenger is a coach at heart. But when KU Chancellor Bernadette Gray-Little introduced the Hays, Kan., native as KU’s Athletics Director January 3, 2011, he promised not to call any plays for the coaches. That doesn’t mean, though, that he won’t be right there with them – and their student-athletes – every step of the way. For it’s his genuine care for coaches and student-athletes that has stamped his career in intercollegiate athletics.

Since Zenger’s arrival at KU, those coaches and student-athletes have raised the bar with outstanding performances on both the conference and national stages. Highlights include:

- A National Championship for the Women’s Outdoor Track & Field team, and two individual national champions.
- An NCAA Final Four appearance for Men’s Basketball and four more Big 12 regular-season Championships, raising that streak of titles to 10.
- Two NCAA Sweet 16 appearances for Women’s Basketball.
- Two NCAA Sweet 16 (and three straight NCAA appearances) for Volleyball.
- NCAA appearances for Baseball, Soccer, Softball and Women’s Golf.
- A National Coach-of-the-Year award (Stanley Redwine, women’s track and field) and several Big 12 Conference Coach-of-the-Year awards – Bill Self, men’s basketball (twice), Stanley Redwine, women’s track and field (twice), Ray Bechard, volleyball (twice), and Clark Campbell (swimming).

In fact, during the 2013-14 academic year, 11 KU teams reached postseason play, the most KU appearances in one year in more than a decade.

Zenger has spearheaded a tremendous upgrade in Kansas Athletics’ facilities as well – improvements he expects will help KU’s coaches and student-athletes continue their run of outstanding performances. Most notable among these is the completion of Rock Chalk Park, which contains new, state-of-the-art stadiums for KU’s Track & Field, Soccer and Softball programs. Memorial Stadium has received a facelift as well. In summer 2014 the track surrounding the football field was removed, replaced with new artificial turf, bringing the turf to within 10 feet of the stands. In addition, construction is underway on the DeBruce Center, the permanent home of James Naismith’s original “Rules

of Basket Ball,” adjacent to historic Allen Fieldhouse. Finally, construction has begun on McCarthy Hall, which will house the men’s basketball team and an equal number of distinguished non-student-athletes.

Zenger came to KU after serving for five years as athletics director at Illinois State University, helping steer ISU Athletics to a place of prominence in the Missouri Valley Conference. The Redbirds won a conference-leading seven league titles during the 2009-10 season and captured their second Valley All-Sports Trophy in three years. ISU also reached highs in fundraising, academics and community service during Zenger’s tenure there.

Zenger’s career took several turns before landing in athletics administration. After playing football at Fort Hays State and Mid-American Nazarene College, and even before he finished his undergraduate degree at Kansas State, he was pursuing his dream of coaching by assisting the football coaches at Manhattan (Kan.) High School. His first college football coaching job came at Drake University right after graduation; he then joined Bill Snyder’s staff at Kansas State, serving in key roles as assistant recruiting coordinator and director of football operations.

-more-
It became evident, though, that more than coaching was in store for Zenger. He came to KU to earn his Ph.D. in educational policy and leadership, while strengthening his understanding of university leadership at the highest levels.

Still, coaching stayed in his blood. He joined the football staff at the University of South Florida and then at the University of Wyoming before returning to Kansas State, eventually serving as KSU’s associate athletics director for development. He held that position until becoming Athletics Director at Illinois State in 2005.

Zenger served for three years on the NCAA Division I Committee on Student-Athlete Reinstatement. He also served on two NCAA Division I Football Championship Subdivision (FCS) Division committees, and was a member of the Executive Committee of NACDA’s Division I FCS Athletic Directors Association. He is married to the former Pam McNarney; they have three children: Luke, Abby and Jake.



TEAM RESULTS

Date	Tournament	1st	2nd	3rd	4th	Score	+/-	Finish	Teams	Par	Top Individual
9/16-17	Cardinal Cup	295	286	300	--	881	+17	2nd	13	72	Y. Kawinpakorn, T2 (213)
9/23-24	Marilynn Smith Invitational	303	299	307	--	910	+46	1st	15	72	Meghan Potee, 1 (224)
9/30-10/1	Challenge at Onion Creek	294	289	292	--	876	+36	4th	11	70	T.Boonraksasat, 6 (216)
9/30-10/1	UMKC Invitational (Individuals Only)	--	--	--	--	--	--	-	--	72	Gabriella DiMarco, T9 (230)
10/12-13	Diane Thomason Invitational	303	298	303	--	904	+40	2nd	12	72	Y.Kawinpakorn, 2 (223)
10/27-28	Palmetto Intercollegiate	297	295	284	--	876	+12	1st	19	72	Pornvipa Sakdee, T4 (217)
2/14-16	Florida State Matchup	309	311	301	--	921	+57	9th	11	72	T.Boonraksasat, T32 (229)
3/14-16	3M Lady Jaguar Intercollegiate	316	294	300	--	910	+46	3rd	14	72	Pornvipa Sakdee, T8 (225)
3/24-25	2014 Briar’s Creek Invitational	308	301	294	--	903	+39	7th	17	72	Y.Kawinpakorn, T15 (223)
4/4-6	SMU Invitational	306	299	--	--	605	+29	5th	16	72	Y.Kawinpakorn, T7 (147)
4/19-20	Lady Buckeye Invitational	305	307	304	--	916	+52	5th	12	72	Y. Kawinpakorn, T.Boonraksasat, T6 (227)
4/25-27	Big 12 Championship	297	295	294	--	886	+22	T4th	9	72	Y.Kawinpakorn, T2 (211)
5/8-10	NCAA Regionals	309	290	300	--	899	+35	T5th	24	72	Minami Levonowich, T19 (222)
5/20-23	NCAA Championship	313	293	303	292	1,201	+81	24th	24	70	Y.Kawinpakorn, T84 (299)

TEAM STATISTICS

	Rounds	Total Strokes	Team Average	1st Round	2nd Round	3rd Round	4th Round	Player Average
Fall	15	4,447	296.46	1,492 / 298.4	1,467 / 293.4	1,486 / 297.2	--	74.12
Spring	24	7,241	301.71	2,463 / 307.88	2,390 / 298.75	2,096 / 299.43	292 / 292	75.43
Overall	39	11,688	299.69	3, 955 / 304.23	3,857 / 296.69	3,582 / 298.5	292 / 292	74.92

INDIVIDUAL STATISTICS (INDIVIDUAL ROUNDS INCLUDED)

Student-Athlete	Events	Rounds	Strokes	Low-Hi	Average	Avg. vs. Par	Wins	T-5	T-10	T-20	Rounds in 60’s	Low 54	Top Finish
Thanuttra Boonraksasat	13	39	2,949	70-86	75.62	+11.9	--	1	2	4	--	216	2
Gabriella DiMarco	5	15	1,191	72-87	79.4	+22.2	--	--	1	1	--	230	T9
Carly Humes	1	3	270	86-93	90	+54	--	--	--	--	--	270	T55
Yupaporn Kawinpakorn	13	39	2,904	68-89	74.46	+8.5	--	3	4	3	5	211	2
Minami Levonowich	13	39	2,976	71-84	76.31	+14	--	--	2	3	--	222	T7
Meghan Potee	12	36	2,786	71-85	77.39	+17.3	1	--	1	1	--	222	1
Pornvipa Sakdee	13	39	2,985	69-89	76.54	+14.7	--	1	1	2	1	217	T4
Mackenzie Thayer	2	6	477	74-83	79.5	+22.5	--	--	--	--	--	238	T40
Michelle Woods	5	15	1,177	70-86	78.47	+20.6	--	--	--	2	--	225	T16

2013-14 TOURNAMENT RESULTS

CARDINAL CUP

SEPT. 16-17, 2013 // SIMPSONVILLE, KY. // CARDINAL CLUB

Team Results	Score	To Par
1. Louisville	283-284-292--859	-5
2. Kansas	295-286-300--881	+17
3. Louisville (B)	295-289-309--893	+29
4. Chattanooga	301-293-307--901	+37
5. Middle Tennessee	302-301-302--905	+42
6. Murray State	303-300-304--907	+44
7. Cincinnati	303-299-312--914	+51
8. Memphis	307-306-306--919	+55
9. Illinois State	301-314-305--920	+56
10. South Florida	314-305-308--927	+63
11. Ball State	315-312-307--934	+70
12. Marshall	325-320-327--972	+108
13. Northern Kentucky	332-317-324--973	+109

Kansas Individual Results		
T2. Yupaporn Kawinpakorn	72-68-73--213	-3
T14. Minami Levonowich	74-74-76--224	+8
T14. Pornvipa Sakdee	75-74-75--224	+8
T16. Michelle Woods	79-70-76--225	+9
T26. Thanuttra Boonraksasat	74-76-78--228	+12
53. Mackenzie Thayer (Individual)	77-82-80--239	+23

MARILYNN SMITH SUNFLOWER INVITATIONAL

SEPT. 22 - 23, 2013 // MANHATTAN, KAN. // COLBERT HILLS GOLF COURSE

Team Results	Score	To Par
1. Kansas	303-299-308--910	+46
2. Kansas State	313-302-311--926	+62
3. Tulsa	319-306-316--941	+77
4. Arkansas State	324-306-316--944	+80
5. Oral Roberts	320-313-321-954	+90
T6. Nebraska	313-329-318--960	+96
T6. Colorado State	326-320-314--960	+96
8. New Mexico State	314-324-337--975	+111
9. North Texas	322-322-332--976	+112
10. Northern Iowa	337-324-329-990	+124
11. UMKC	328-324-339--991	+125
12. Redlands CC	330-330-337--997	+131
13. Wichita State	334-328-336-998	+132
14. Southern Illinois	345-327-351--1023	+159
15. Creighton	372-335-351--1058	+194

Kansas Individual Results		
1. Meghan Potee	75-75-74--224	+8
2. Thanuttra Boonraksasat	78-74-75--227	+11
8. Minami Levonowich	78-76-78--232	+16
T12. Yupaporn Kawinpakorn (Individual)	72-74-89--235	+19
T12. Gabby DiMarco (Individual)	81-80-74--235	+19
T17. Michelle Woods	82-80-75--237	+21
T32. Pornvipa Sakdee	83-78-81--242	+26



THANUTTRA BOONRAKSASAT AND MEGHAN POTEE

2013 CHALLENGE AT ONION CREEK

SEPT. 30-OCT. 1, 2013 // AUSTIN, TEXAS // ONION CREEK GOLF CLUB

Team Results	Score	To Par
1. Texas Tech	291-291-286--868	+28
2. Miami	293-291-286--871	+31
3. Coastal Carolina	291-298-286--875	+35
4. Kansas	294-289-292--876	+36
5. Texas State	294-291-300--885	+45
6. Iowa	297-292-308--898	+58
7. Kansas State	303-303-298--904	+64
8. Grand Canyon	297-302-312--911	+71
9. Michigan	307-309-299--915	+75
10. St. Edwards	311-311-317--939	+99
11. UTPA	322-333-312--967	+127

Kansas Individual Results		
6. Thanuttra Boonraksasat	72-70-75--216	+6
T7. Yupaporn Kawinpakorn	74-71-73--218	+8
14. Pornvipa Sakdee	70-77-74--221	+11
T15. Meghan Potee	78-73-71--222	+12
T33. Michelle Woods (Individual)	80-79-70--229	+19
T37. Minami Levonowich	80-75-75--230	+20

UMKC KANGAROO INVITATIONAL

SEPT. 30-OCT. 1, 2013 // KANSAS CITY, MO. // SHOAL CREEK GOLF CLUB

Kansas Individual Results (Competing as Individuals)		
T9. Gabriella DiMarco	72-83-75--230	+14
T21. Mackenzie Thayer	83-74-81--238	+22
T55. Carly Humes	93-91-86--270	+54

2013-14 TOURNAMENT RESULTS

DIANE THOMASON INVITATIONAL

OCT. 12-13, 2013 // IOWA CITY, IOWA // FINKBINE GOLF COURSE

Team Results	Score	To Par
1. Illinois	299-301-299--899	+35
2. Kansas	303-298-303--904	+40
3. Wisconsin	304-305-298--907	+43
4. Ohio State	305-301-305--911	+47
5. GRU Augusta	303-300-314--917	+53
6. Iowa	304-312-306--922	+58
7. Campbell	311-303-309--923	+59
8. Chattanooga	320-307-305--932	+68
9. Kansas State	310-311-317--938	+74
10. Middle Tennessee	313-307-319--939	+75
11. Michigan	322-318-306--946	+82
12. South Florida	319-316-325--960	+96

Kansas Individual Results		
2. Yupaporn Kawinpakorn	78-70-75--223	+7
T7. Minami Levonowich	76-76-75--227	+11
T7. Meghan Potee	77-76-74--227	+11
T15. Thanuttra Boonraksasat	72-78-79--229	+13
T34. Gabby DiMarco (Individual)	79-78-78--235	+19
T34. Michelle Woods (Individual)	82-77-76--235	+19
T47. Pornvipa Sakdee	80-76-81--237	+21

2013 PALMETTO INTERCOLLEGIATE

OCT. 27-28, 2013 // KIAWAH ISLAND, S.C. // TURTLE POINT GOLF COURSE

Team Results	Score	To Par
1. Kansas	297-295-284--876	+12
2. Georgia State	308-288-283--879	+15
3. East Tennessee State	294-306-299--899	+35
4. GRU Augusta	298-311-292--901	+37
T5. Charleston	299-303-300--902	+38
T5. Illinois	301-302-299--902	+38
7. Maryland	305-312-288--905	+41
8. Xavier	307-314-292--913	+49
T9. Coastal Carolina	311-310-298--919	+55
T9. South Florida	304-305-310--919	+55
11. James Madison	308-316-298--922	+58
12. Jacksonville State	304-311-311--926	+62
13. Elon	317-305-307--929	+65
14. Cincinnati	315-305-311--931	+67
15. Eastern Michigan	310-319-306--935	+71
16. Michigan	306-316-317--939	+75
17. Missouri State	317-327-304--948	+84
18. Charleston Southern	322-314-320--956	+92
19. Bucknell	320-320-317--957	+93

Kansas Individual Results		
T4. Pornvipa Sakdee	74-74-69--217	+1
T7. Yupaporn Kawinpakorn	75-76-69--220	+4
T11. Minami Levonowich	74-72-76--222	+6
T14. Thanuttra Boonraksasat	74-79-70--223	+7
T22. Meghan Potee	76-73-77--226	+10

2014 FLORIDA STATE MATCHUP

FEB. 14-16, 2014 // TALLAHASSEE, FLA. // SOUTHWOOD GOLF CLUN

Team Results	Score	To Par
1. South Carolina	293-293-285--871	+7
2. Clemson	297-292-284--873	+9
3. Florida State	294-298-289--881	+17
4. Virginia	298-296-294--888	+24
5. Texas A&M	293-307-293--893	+29
6. Mississippi State	305-298-292--895	+31
T7. Mercer University	298-303-299--900	+36
T7. Furman	302-302-296--900	+36
9. Kansas	309-311-301--921	+57
10. Kansas State	315-304-304--923	+59
11. Florida Gulf Coast	310-310-307--927	+63

Kansas Individual Results		
T32. Thanuttra Boonraksasat	71-79-79--229	+13
T40. Pornvipa Sakdee	78-80-74--232	+16
T45. Yupaporn Kawinpakorn	79-80-75--234	+18
T45. Minami Levonowich	84-76-74--234	+18
T51. Meghan Potee	81-76-78--235	+1



PORNVIPA SAKDEE

2013-14 TOURNAMENT RESULTS

3M LADY JAGUAR INTERCOLLEGIATE

MARCH 14-16, 2014 // AUGUSTA, GA.// FOREST HILLS GOLF CLUB

Team Results	Score	To Par
1. Vanderbilt	299-302-295--896	+32
2. Mercer	312-288-306--906	+42
3. Kansas	316-294-300--910	+46
4. East Tennessee	309-299-303--911	+47
5. Campbell	318-301-303--922	+58
6. GRU Augusta	318-299-309--926	+62
7. Illinois	311-300-317--928	+64
T8. Purdue	321-309-300--930	+66
T8. Troy	320-307-303--930	+66
10. Coastal Carolina	318-311-306--935	+71
11. Chattanooga	325-312-299--936	+72
12. Lamar	332-305-311--948	+84
13. Southern Mississippi	337-315-316--968	+104
14. Boston College	348-338-328--1,014	+150

Kansas Individual Results

T8. Pornvipa Sakdee	81-70-74--225	+9
T12. Thanuttra Boonraksasat	79-73-75--227	+11
T19. Yupaporn Kawinpakorn	77-81-72--230	+14
T27. Meghan Potee	80-73-79--232	+16
T39. Minami Levonowich	80-78-79--237	+21
T69. Gabby DiMarco (Individual)	87-82-79--248	+32

2014 BRIAR'S CREEK INVITATIONAL

MARCH 24-25, 2014 // JOHN'S ISLAND, S.C.// GOLF CLUB AT BRIAR'S CREEK

Team Results	Score	To Par
1. Texas Tech	299-303-286--888	+24
2. Penn State	309-294-289--892	+28
3. East Carolina	294-306-294--894	+30
4. GRU Augusta	300-296-299--895	+31
5. Clemson	303-298-298--899	+35
6. Chattanooga	303-304-294--901	+37
7. Kansas	308-301-294--903	+39
T8. Wisconsin	309-303-295--907	+43
T8. East Tennessee State	300-303-304--907	+43
10. South Florida	311-303-298--912	+48
11. Illinois	316-310-293--919	+55
T12. Coastal Carolina	310-311-299--920	+56
T12. Maryland	315-303-302--920	+56
14. Indiana	310-305-306--921	+57
15. College of Charleston	309-305-308--922	+58
16. Princeton	328-332-324--984	+120
17. Charleston Southern	329-331-325--985	+121

Kansas Individual Results

T15. Yupaporn Kawinpakorn	76-75-72--223	+7
T18. Thanuttra Boonraksasat	76-73-75--224	+8
T31. Pornvipa Sakdee	81-74-72--227	+11
T43. Minami Levonowich	75-80-75--230	+14
T72. Meghan Potee	85-79-77--241	+25
77. Gabriella DiMarco	84-81-78--243	+27

SMU INVITATIONAL

APRIL 4-6, 2014 // DALLAS, TEXAS // DALLAS ATHLETIC CLUB

Team Results	Score	To Par
1. Baylor	294-297--591	+15
2. LSU	301-294--595	+19
3. North Carolina	307-290--597	+21
4. UT San Antonio	307-297--604	+28
5. Kansas	306-299--605	+29
6. Oklahoma State	305-301--606	+30
7. Wake Forest	311-300--611	+35
8. SMU	308-305--613	+37
9. Texas Tech	307-312--619	+43
T10. Kansas State	318-302--620	+44
T10. TCU	309-311--620	+44
12. Kent State	314-310--624	+48
T13. Nebraska	319-308--627	+51
T13. Purdue	315-312--627	+51
15. Iowa	315-315--630	+54
16. North Texas	321-321--642	+66

Kansas Individual Results

T7. Yupaporn Kawinpakorn	71-76--147	+3
T23. Pornvipa Sakdee	79-74--153	+9
28. Minami Levonowich	76-78--154	+10
T28. Meghan Potee	80-74--154	+10
T64. Thanuttra Boonraksasat	86-75--161	+17

LADY BUCKEYE INVITATIONAL

APRIL 19-20, 2014 // COLUMBUS, OHIO // SCARLET COURSE

Team Results	Score	To Par
1. Ohio State	303-298-294--895	+31
2. Michigan State	305-306-292--903	+39
3. Kent State	299-302-303--904	+40
4. Purdue	306-309-297--912	+48
5. Kansas	305-307-304--916	+52
6. Illinois	315-316-306--937	+73
7. Iowa	320-306-312--938	+74
8. Nebraska	316-313-310--939	+75
9. Texas Tech	320-308-312--940	+76
10. Toledo	321-313-317--951	+87
11. Ohio	318-321-318--957	+93
12. Indiana	324-318-316--928	+94

Kansas Individual Results

T6. Yupaporn Kawinpakorn	76-74-77--227	+11
T6. Thanuttra Boonraksasat	74-78-75--227	+11
T31. Minami Levonowich	79-78-78--235	+19
T34. Meghan Potee	78-77-81--236	+20
T38. Pornvipa Sakdee	77-86-74--237	+21
T68. Michelle Woods (Individual)	86-83-82--251	+35

2013-14 TOURNAMENT RESULTS



YUPAPORN KAWINPAKORN

BIG 12 CHAMPIONSHIP

APRIL 25-27, 2014 // AUSTIN, TEXAS // UNIVERSITY OF TEXAS GOLF CLUB

Team Results	Score	To Par
1. Oklahoma	291-292-278--861	-3
2. Texas	297-289-292--878	+14
3. Baylor	297-299-288--884	+20
T4. Iowa State	302-293-291--886	+22
T4. Kansas	297-295-294--886	+22
6. Texas Tech	295-306-300--901	+37
7. Oklahoma State	298-308-300--906	+42
8. Kansas State	293-311-312--916	+52
9. TCU	310-306-301--917	+53

Kansas Individual Results

T2. Yupaporn Kawinpakorn	69-73-69--211	-5
T26. Minami Levonowich	76-75-76--227	+11
T26. Pornvipa Sakdee	76-72-79--227	+11
T33. Thanuttra Boonraksasat	82-75-71--228	+12
35. Meghan Potee	76-76-78--230	+14

NCAA REGIONALS

MAY 8-10, 2014 // STILLWATER, OKLA. // KARSTEN CREEK GOLF CLUB

Team Results	Score	To Par
1. UCLA	299-289-287--875	+11
2. Alabama	295-297-300--892	+28
3. Mississippi State	302-294-297--893	+29
4. California	295-294-305--894	+30
T5. Kansas	309-290-300--899	+35
T5. Ohio State	305-288-306--899	+35
7. Arizona	306-289-306--901	+37
T8. Florida	296-296-310--902	+38
T8. Oklahoma State	298-298-306--902	+38
10. Kent State	296-298-309--903	+39
T11. Arkansas	309-295-300--904	+40
T11. Minnesota	299-304-301--904	+40
13. Harvard	308-297-306--911	+47

14. North Carolina	302-301-313--916	+52
15. UNLV	307-307-303--917	+53
16. Colorado	306-302-319--927	+63
T17. Miami (Florida)	318-297-315--930	+66
T17. SMU	315-303-312--930	+66
19. Texas	309-298-324--931	+67
20. LSU	309-313-314--936	+72
21. Lamar	318-307-319--944	+80
22. Wichita State	303-322-320--945	+81
23. LIU Brooklyn	337-329-334--1,000	+136
24. Siena	334-342-339--1,015	+151

Kansas Individual Results

T19. Minami Levonowich	77-72-73--222	+6
T24. Yupaporn Kawinpakorn	75-69-80--224	+8
T45. Thanuttra Boonraksasat	81-74-74--229	+13
T51. Pornvipa Sakdee	77-75-79--231	+15
T66. Meghan Potee	80-79-74--233	+17

NCAA CHAMPIONSHIP

MAY 20-23, 2014 // TULSA, OKLA. // TULSA COUNTRY CLUB

Team Results	Score	To Par
1. Duke	293-285-278-274--1,130	+10
2. Southern California	293-291-278-270--1,132	+12
3. UCLA	291-293-283-278--1,145	+25
4. Oklahoma	288-287-291-281--1,147	+27
5. Arizona State	293-287-291-279--1,150	+30
6. Mississippi State	302-285-283-287--1,157	+37
T7. Arizona	298-286-287-287-1,157	+38
T7. Ohio State	299-291-288-28--1,158	+38
9. Alabama	305-285-289-282--1,161	+41
T10.. North Carolina State	307-284-280-292-1,163	+43
T10. Texas A&M	305-292-288-278--1,163	+43
T10. Vanderbilt	303-290-286-284--1,163	+43
13. South Carolina	301-299-283-281--1,164	+44
14. Virginia	303-295-288-279--1,165	+45
T15. Northwestern	305-289-284-288--1,166	+46
T15. Tulane	303-294-278-291--1,166	+46
17. Washington	299-289-293-286--1,167	+47
T18. Florida	305-292-290-282--1,169	+49
T18. Stanford	300-286-294-289--1,169	+49
T20. Campbell	305-303-289-281--1,178	+58
T20. Michigan State	305-283-302-288--1,178	+58
22. California	296-305-289-290--1,180	+60
23. Iowa State	306-289-292-290--1,186	+66
24. Kansas	313-293-303-292--1,201	+81

Kansas Individual Results

T84. Yupaporn Kawinpakorn	83-71-75-70--299	+19
T90. Thanuttra Boonraksasat	76-74-77-73--300	+20
T98. Minami Levonowich	74-71-80-77--302	+22
T122. Pornvipa Sakdee	89-77-74-72--312	+32
126. Meghan Potee	80-84-77-85--326	+46

MARILYNN SMITH

Marilynn Smith, 85, was one of the original 13 founders of the Ladies Professional Golf Association (LPGA) in 1950. She is a charter member of the organization. She is a three time President of the LPGA.

Smith won 22 times on the LPGA tour, including the 1963 Titleholders, one of the major women's events at the time, in an 18-hole playoff over Mickey Wright. Before creating the LPGA tour, Smith won the Kansas Women's Amateur Championship three times (1946-47-48). She arrived on the Kansas golf scene from Wichita. Her two-year career at Kansas was highlighted by a 1949 National Collegiate Individual title. Following the title, Smith accepted an offer from Spaulding to turn pro at \$5,000 a year. From 1954-72, she won at least one tour event in 14 of 19 years. In 1963 and 1964, she won the Titleholders Championship.

Smith's contributions and honors include serving as the two-year president of the organization she helped found. She was the first ever female television commentator for a men's professional golf tournament in 1973. In 1979, Smith received the inaugural Patty Berg Award for distinguished service to women's golf. Golf Digest presented her the LPGA Founders Cup for charitable service off the course in 1983. She was selected as one of the Distinguished Champions of the Vincent T. Lombardi Tournament in 1987. The award recognized leadership in sports and demonstration of high ideals of public good. Smith was inducted into the World Golf Hall of Fame under the Lifetime Achievement category.



1994 (Oct. 17-18) - Prairie Dunes Country Club (Hutchinson, Kan.)

Top Individual	Team Winner	Top KU Individual
Stacy Kolb-236 (Texas Tech)	Oklahoma State (966)	Michelle Uher- t15th-(253)

1995 (Oct. 16-17) - Crestview Country Club (Wichita, Kan.)

Top Individual	Team Winner	Top KU Individual
Jennifer Hubbard-233 (SMU)	SMU (951)	Mandy Munsch-t12th-(243)

1996 (Oct.14-15) - Alvamar Golf Club (Lawrence, Kan.)

Top Individual	Team Winner	Top KU Individual
Rachelle Tacha-230 (Nebraska)	Texas A&M (949)	Anne Clark- t21st-(243)

1997 (Oct.21-22) - Terradyne Country Club (Andover, Kan.)

Top Individual	Team Winner	Top KU Individual
Jamie Tucker-226 (KU) and Natasha Ausderau (Wichita State)	Kansas(932)	Jamie Tucker-t1st-(226)

2000 (Oct.15-17)-Colbert Hills (Manhattan, Kan.)

Top Individual	Team Winner	Top KU Individual
Amelia Moses-221 (Missouri)	Missouri (916)	Kristy Straub-t12th-(236)

2001 (Oct.15-16) - Alvamar Golf Club (Lawrence, Kan.)

Top Individual	Team Winner	Top KU Individual
Julie Hary-72 (Nothern Iowa)	Oklahoma (306)	Heather Rose-t9th-(77)

2002 (Oct.13-15) - Willowbend Golf Club (Wichita, Kan.)

Top Individual	Team Winner	Top KU Individual
Randi Gauthier-222 (N. Texas)	Kansas State (903)	Heather Rose-t7th-(226)

2003 (Oct.13-14) - Colbert Hills (Manhattan, Kan.)

Top Individual	Team Winner	Top KU Individual
Samantha Richdale-223 (Ill. St.)	Kansas State (925)	Jill Womble-8th-(234)

2004 (Oct.11-12) - Alvamar Golf Club (Lawrence, Kan.)

Top Individual	Team Winner	Top KU Individual
Liz Bennett-230 (Iowa)	Kansas (946)	Annie Giangrso-5th-(236)

2005 (Oct.10-11) - Colbert Hills (Manhattan, Kan.)

Top Individual	Team Winner	Top KU Individual
Helene Robert-215 (Kansas State)	TCU (869)	Amanda Costner-6th-(220)

2006 (Oct.2-3) - Alvamar Golf Club (Lawrence, Kan.)

Top Individual	Team Winner	Top KU Individual
Anita Ojeda-221 (UALR)	Kansas (917)	Emily Powers-4th-(225)

2007 (Oct. 1-2) - Colbert Hills (Manhattan, Kan.)

Top Individual	Team Winner	Top KU Individual
Julia Potter-143 (Missouri)	Kansas (600)	Camilla Svensson-t4th-(147)

2008 (Sept. 22-23) -Alvamar Golf Club (Lawrence, Kan.)

Top Individual	Team Winner	Top KU Individual
Emily Powers-149 (Kansas)	Oral Roberts (615)	Emily Powers-1st-(149)

2009 (Sept.28-29) - Colbert Hills (Manhattan, Kan.)

Top Individual	Team Winner	Top KU Individual
Kelli Shean- 209 (Arkansas)	Tulsa (901)	Emily Powers-t7th-(231)

2010 (Sept. 27-28) - Alvamar Golf Club (Lawrence, Kan.)

Top Individual	Team Winner	Top KU Individual
Grace Thiry-219 (Kansas)	Kansas (903)	Grace Thiry-1st-(219)

2011 (Sept. 26-27) - Colbert Hills (Manhattan, Kan.)

Top Individual	Team Winner	Top KU Individual
Malin Lundberg-217 (UALR)	UALR (891)	Thanuttra Boonraksasat-t4th- (221)

2012 (Sept. 24-25) - Alvamar Golf Club (Lawrence, Kan.)

Top Individual	Team Winner	Top KU Individual
Abigail Laker-143 (Arkansas St.)	Kansas (601)	Yupaporn Kawinpakorn-2nd-(146)

2013 (Sept. 23-24) - Colbert Hills (Manhattan, Kan.)

Top Individual	Team Winner	Top KU Individual
Meghan Potee-224 (Kansas)	Kansas (910)	Meghan Potee-1st-(224)

ALL-TIME LETTERWINNERS

-A-

Atchison, Sherri 1987-88-89-90

-B-

Bal, Meghna 2008-09-10-11
Bauerle, Linda1986
Bawanan, Jennifer 2001-02-03-04
Belisle, Tracy1993-94-95
Birdsell, Kelly 2005-06
Bishop, Ashely 1998-99-00-01
Black, Lisa1983-84
Boonraksasat, Thanuttra2011-12-13-14
Boozer, Barbara 1975-76
Boozer, Beth 1975-76-77-78
Boozer, Beverly1982-83
Braymen, Ann1985-86
Burgess, Sarah 1978-79-80-81

-C-

Carson, Kalynd 2009
Clark, Anne 1994-95-96-97
Clark, Jennifer 2008-09-10-11
Coe, Patricia 1980-81-82-83
Costner, Amanda 2004-05-06-07

-D-

DeLong, A. Jacqueline1977
DiMarco, Gabriella2012-13-14
Donnelly, Tara1994

-E-

Eyre, Catherine1979

-G-

Giangrosso, Annie2005-06-07-08
Gnewuch, Tina1985-86-87-88
Gockel, Meghan 2007-08-09-10
Goetsche, Pamela 1977-78
Goolsbe, Barbara1977-78-80
Gustafson, Karen1982

-H-

Hadl, Charneil1977
Hallenbeck, Jo Jo2006-07-08
Helleberg, Jane1985-86
Hepler, Sara1989
Hiatt, Jaci2006-07-08
Hoins, Nancy 1976-77-78-79
Holbrook, Ann1993-94-95
Howard, Barbara1980
Howard, Lisa1979-80-81-82
Humes, Carly 2013-14

-J-

Jackson, Maria2009-10-11-12
Johnson, Cynthia1979

-K-

Kawinpakorn, Yupaporn 2013-14
Kelly, Maureen 1983-84-85-86
Kierl, Sarah2005-06-07-08
Kruggel, Tiffany2000-01-02-03

-L-

Lauritsen, Lori 1994-96-97
Levonowich, Minami 2013-14
Loeffelholz, LeeAnn1983-84
Loftus, Ellen1981
Lowen, Donna 1987-88-89-90
Lowery, Ashley1999

-M-

MacDonald, Jill2002-03
Mahoney, Sarah 2000-01
Marney, Kelly1996-97
Martin, Laura1990-91-92
Merwald, Julie1980
Morrison, Patricia1975-77
Mossberg, Suzanne1987-89
Mulvihill, Michelle1986-87-88
Munsch, Mandy 1996-97-98-99
Myers, Laura1989-90-91

-N-

Nugent, Katy2011-12

-P-

Padden, Carrie1997-98-99-00
Pekar, Susan1985-86-87-88
Potee, Meghan2011-12-13-14
Powers, Emily 2007-08-09-10
Pryor, Chelsey 2003-04-05-06

-R-

Rainbolt, Alyssa2008-09-10
Reinbeck, Cathy1991-93
Renz, Lauren2005
Reuter, Beth1995-96-97-98
Reynolds, Holly1991-92-93-94
Rose, Heather2000-01-02-03
Russell, Missy1994-95-96-97

-S-

Sakdee, Pornvipa 2013-14
Sanders, Brenda1983-84-85-86

-T-

Scheid, Marilee1984-85-86
Schultz, Andi1999-2000
Schwerman, Kendall2004
Shockley, Toni1985-86-87
Shogren, Sharon1977
Simpson, Jill1997-99
Straub, Kristy2000-01-02-03
Svensson, Camilla2007-08

Tessary, Susan1997-98-99-00
Thayer, Mackenzie 2013-14
Thiry, Grace2008-09-10-11
Thompson, Jessica1996
Thornberry, Tegan2002
Thorsteindottir, Solveig1983-84
Triplett, Shelly1989-90-91-92
Tucker, Jamie1998

-U-

Uher, Michelle1992-93-94-95

-W-

Webb, Kathy1975-76
White, Sally1979-80
Williams, Deann1981-82
Williamson, Lynn1993-94-95-96
Wilson, Sydney2008-09-10
Wineinger, Pam1993-94
Winkelmann, Meredith2004-05-06
Womble, Jill2004-05-06-07
Woods, Michelle2012-13-14
Woods, Tiffany2004-05

-Y-

Yowell, Audrey2010-11-12-13

Active players in bold

KANSAS COACHES



ROSS RANDALL
1981-84



KENT WEISER
1985-87



BRAD DEMO
1988-90



SARAH JOHNSON
1991-92



JERRY WAUGH
1993-99



NICOLE HOLLINGSWORTH
2000-02



MEGAN MENZEL
2003-04



ERIN O'NEIL
2004-PRESENT

INDIVIDUAL RECORDS

INDIVIDUAL MEDALISTS		
Year	Player (Score)	Tournament
1987	Sue Pekar (150)	Missouri Invitational
1988	Shelly Triplett (155)	Texas Invitational
1988	Sherri Atchison (155)	Texas Invitational
1991	Laura Myers (153)	Minnesota Intercollegiate
1991	Shelly Triplett (226)	Alabama Intercollegiate
1992	Holly Reynolds (220)	Azalea Seahawk Invitational
1992	Holly Reynolds (156)	Cyclone Classic
1992	Holly Reynolds (153)	Yale Intercollegiate
1992	Holly Reynolds (234)	Shocker Fall Classic
1993	Holly Reynolds (224)	Utah Dixie Classic
1994	Holly Reynolds (227)	Aztec Invitational
1994	Holly Reynolds (223)	Indiana Invitational
1996	Missy Russell (234)	SW MO State Invitational
1997	Jamie Tucker (226)	Sunflower Invitational
2000	Sarah Mahoney	Kansas v. Coastal Carolina
2000	Ashely Bishop (75)	Kansas v. College of Charleston
2001	Jennifer Bawanan (71)	Sunflower Invitational
2002	Heather Rose (235)	Waterwood Spring Invitational
2003	Jennifer Bawanan (148)	Aztec Spring Invitational
2005	Chelsey Pryor (226)	ORU Shootout
2007	Amanda Costner (221)	Big 12 Championsip
2008	Emily Powers (223)	Sunflower Invitational
2009	Meghan Gockel (218)	Duramed Collegiate Invitational
2010	Grace Thiry (219)	Marilynn Smith Invitational
2012	Yupaporn Kawinpakorn (213)	Price's "Give 'Em Five"
2013	Meghan Potee (224)	Marilynn Smith Invitational
2014	Pornvipa Sakdee (216)	Marilynn Smith Invitational

KU CAREER TOP-10 FINISHES		
1.	Holly Reynolds (1991-94)	21
2.	Yupaporn Kawinpakorn (current)	15
3.	Emily Powers (2007-10)	13
4.	Thanuttra Boonraksasat (2011-14)	12
5.	Laura Myers (1989-92)	11
6.	Sue Pekar (1985-88)	10
7.	Amanda Costner (2004-07)	8
8.	Tina Gneuwuch (1985-88)	7
9.	Shelly Triplett (1989-92)	6
10.	Donna Lowen (1987-90)	5
	Missy Russell (1994-97)	5
12.	Meghan Potee (2011-12)	4
	Sherri Atchison (1987-90)	4
	Maureen Kelly (1986)	4
	Chelsey Pryor (2003-06)	4
	Susan Tessary (1997-2000)	4

KU CAREER TOP-5 FINISHES		
1.	Holly Reynolds (1991-94)	13
2.	Thanuttra Boonraksasat (2011-14)	8
	Yupaporn Kawinpakorn (current)	8
3.	Laura Myers (1989-92)	6
4.	Amanda Costner (2004-07)	5
	Sue Pekar (1985-88)	5
7.	Emily Powers (2007-10)	4
	Donna Lowen (1987-90)	4
9.	Susan Tessary (1997-2000)	3
	Shelly Triplett (1989-92)	3

TOP SEASON AVERAGES		
Average	Player	Year
74.46	Yupaporn Kawinpakorn	2013-14
75.4	Yupaporn Kawinpakorn	2012-13
75.45	Amanda Costner	2005-06
75.53	Emily Powers	2007-08
75.57	Emily Powers	2009-10
75.62	Thanuttra Boonraksasat	2013-14
75.75	Thanuttra Boonraksasat	2010-11
75.87	Amanda Costner	2006-07
75.9	Thanuttra Boonraksasat	2012-13
76.03	Katy Nugent	2010-11
76.31	Minami Levonowich	2013-14
76.33	Chelsey Pryor	2005-06
76.45	Emily Powers	2008-09
76.5	Meghan Potee	2012-13
76.54	Pornvipa Sakdee	2013-14
76.63	Grace Thiry	2010-11
76.67	Thanuttra Boonraksasat	2011-12
76.88	Meghna Bal	2010-11
77	Grace Thiry	2009-10
77.3	Katy Nugent	2011-12
77.39	Meghan Potee	2013-14
77.4	Audrey Yowell	2012-13
77.5	Meghna Bal	2009-10
77.5	Amanda Costner	2004-05
77.65	Emily Powers	2006-07
77.66	Grace Thiry	2007-08
77.86	Meghna Bal	2007-08
77.87	Camilla Svensson	2007-08
78.06	Chelsey Pryor	2003-04
78.09	Annie Giangrosso	2007-08
78.12	Meghan Potee	2011-12
78.15	Amanda Costner	2003-04
78.2	Sue Tessary	1998-99
78.3	Minami Levonowich	2012-13
78.33	Meghan Potee	2010-11
78.4	Mandy Munsch	1998-99

INDIVIDUAL RECORDS

LOWEST 18-HOLE TOTALS			
Score	Player	Event	Date
67	Meghan Potee	Edwin Watts/Palmetto	10/24/11
67	Emily Powers	Ron Moore Intercollegiate	9/17/07
67	Amanda Costner	Marilynn Smith	10/10/05
68	Yupaporn Kawinpakorn	Palmetto Intercollegiate	10/28/14
68	Pornvipa Sakdee	Lady Paladin Invitational	9/21/14
68	Yupaporn Kawinpakorn	Cardinal Cup	9/16/13
68	Thanuttra Boonraksasat	Baylor Spring Invitational	4/12/11
69	Yupaporn Kawinpakorn	Marilynn Smith invitational	9/8/14
69	Yupaporn Kawinpakorn	Palmetto Intercollegiate	10/26/14
69	Pornvipa Sakdee	Palmetto Intercollegiate	10/28/13
69	Yupaporn Kawinpakorn	Big 12 Championship (2)	4/25-27/14
69	Yupaporn Kawinpakorn	Palmetto Intercollegiate	10/28/13
69	Yupaporn Kawinpakorn	Price's "Give 'Em Five" Intercollegiate	10/8/12
69	Meghan Potee	Price's "Give 'Em Five" Intercollegiate	10/8/12
69	Katy Nugent	Marilynn Smith	9/27/10
69	Emily Powers	Mountain View Collegiate	3/26/07
69	Amanda Costner	Mountain View Collegiate	3/26/07
69	Amanda Costner	Ptarmigan/Ram Fall Classic	9/13/05
69	Chelsey Pryor	Dick McGuire	9/15/04
69	Amanda Costner	Mountain View Collegiate	3/27/04
69	Sue Tessary	Mountain View Collegiate	3/13/99
70	Thanuttra Boonraksasat	Mountain View Collegiate	3/26/11
70	Grace Thiry	Edwin Watts/Palmetto	10/25/10
70	Thanuttra Boonraksasat	Price's "Give 'Em Five" Intercollegiate	10/13/10
70	Katy Nugent	Marilynn Smith Invitational	9/27/10
70	Emily Powers	Edwin Watts/Palmetto	10/26/09
70	Emily Powers	Chip-N-Club	9/15/09
70	Emily Powers	Mountain View Collegiate	3/30/08
70	Annie Giangrosso	Mountain View Collegiate	3/29/08
70	Amanda Costner	Ptarmigan/Ram Fall Classic	9/11/06
70	Chelsey Pryor	Mountain View Collegiate	3/25/06
70	Amanda Costner	Lady Razorback Invitational	10/16/05
70	Tiffany Woods	Mary Fossum Invitational	9/20/03
70	Heather Rose	Anteater Invitational	3/10/03
70	Jill MacDonald	Hawkeye Invitational	4/13/02
70	Jill MacDonald	Sam Houston Invitational	3/11/02
70	Ashely Bishop	Mountain View Intercollegiate	3/13/99
70	Thanuttra Boonraksasat	Palmetto Intercollegiate	10/28/13
70	Yupaporn Kawinpakorn	Diane Thomason Invitational	10/12/13
70	Thanuttra Boonraksasat	Challenge at Onion Creek	9/29/13
70	Pornvipa Sakdee	Challenge at Onion Creek	9/30/13
70	Meghan Potee	Indiana Invitational	4/13/13
70	Thanuttra Boonraksasat	Clover Cup	3/10/13

LOWEST 54-HOLE TOTALS			
Score	Player	Event	Dates
211	Yupaporn Kawinpakorn	Big 12 Championship	4/25-27/14
212	Amanda Costner	Ptarmigan/Ram Fall Classic	9/12-13/05
213	Yupaporn Kawinpakorn	Palmetto Intercollegiate	10/26-29/14
213	Yupaporn Kawinpakorn	Cardinal Cup	9/16-17/13
213	Yupaporn Kawinpakorn	Price's "Give 'Em Five"	10/9-10/12
213	Emily Powers	Chip-N-Club	9/15-16/09
215	Yupaporn Kawinpakorn	Ron Moore Women's intercollegiate	10/10-12/14
216	Pornvipa Sakdee	Marilynn Smith invitational	9/8-9/14



216	Katy Nugent	Edwin Watts/Palmetto	10/25-26/13
216	Amanda Costner	Lady Razorback Invitational	10/17-18/13
216	Thanuttra Boonraksasat	Challenge at Onion Creek	9/29-30/13
217	Pornvipa Sakdee	Ron Moore Women's Intercollegiate	10/10-12/14
217	Pornvipa Sakdee	Palmetto Intercollegiate	10/27-28/13
217	Chelsey Pryor	Mountain View Intercollegiate	3/25-26/13
217	Meghan Potee	Edwin Watts/Palmetto	10/23-24/12
217	Thanuttra Boonraksasat	Ole Miss Rebel Intercollegiate	4/1-3/11
217	Thanuttra Boonraksasat	Challenge at Onion Creek	9/30-10/1
217	Amanda Costner	Lady Boilmaker	4/9-10/05
218	Yupaporn Kawinpakorn	Challenge at Onion Creek	9/29-30/13
218	Annie Giangrosso	Mountain View Intercollegiate	3/25-26/13
218	Meghan Gockel	Duramed Invitational	3/6-8/09
219	Thanuttra Boonraksasat	Palmetto Intercollegiate	10/28-29/13
219	Grace Thiry	Marilynn Smith Invitational	9/27-28/10
219	Meghna Bal	Price's "Give 'Em Five"	10/8-10/09
220	Thanuttra Boonraksasat	Price's "Give 'Em Five"	10/8-10/12
220	Yupaporn Kawinpakorn	Palmetto Intercollegiate	10/27-28/13
220	Katy Nugent	Rio Verde Collegiate	3/9-11/12
220	Thanuttra Boonraksasat	Sir Pizza Cards Challenge	2/27-28/12
220	Katy Nugent	Marilynn Smith Invitational	9/27-28/10
220	Emily Powers	Mountain View Collegiate	3/29-30/08
220	Amanda Costner	Marilynn Smith Invitational	10/10-11/05
220	Annie Giangrosso	Mountain View Collegiate	3/26-27/05
220	Sue Tessary	Utah Dixie Classic	4/3-4/00
221	Thanuttra Boonraksasat	Marilynn Smith Invitational	9/24-25/12
221	Pornvipa Sakdee	Challenge at Onion Creek	9/30- 10/1
221	Thanuttra Boonraksasat	Marilynn Smith Invitational	9/26-27/11
221	Emily Powers	Edwin Watts/Palmetto	10/26-27/09
221	Emily Powers	Johnie Imes Invitational	9/29-30/08
221	Emily Powers	Ron Moore Intercollegiate	9/17-18/07
221	Amanda Costner	Big 12 Championship	4/16-18/07
221	Emily Powers	Sunflower Invitational	10/2-3/06

INDIVIDUAL HONORS

BIG 12 ALL-TOURNAMENT

2004	Amanda Costner	7th
2007	Amanda Costner	1st
2009	Meghan Gockel	T6th
2013	Yupaporn Kawinpakorn	T10th
2014	Yupaporn Kawinpakorn	T2nd

BIG 12 FIRST TEAM ALL-CONFERENCE

2006	Amanda Costner
2007	Amanda Costner
2008	Emily Powers
2014	Yupaporn Kawinpakorn

BIG 12 SPORTSPERSON OF THE YEAR

2007	Amanda Costner
------	----------------

NGCA ALL-AMERICAN SCHOLARS

1992	Laura Myers
	Shelly Triplett
2002	Jennifer Bawanan
	Jill MacDonald
2003	Jennifer Bawanan
2004	Jennifer Bawanan
	Chelsey Pryor
2005	Chelsey Pryor
2006	Chelsey Pryor
	Amanda Costner
2007	Meghan Gockel
2008	Meghan Gockel
	Sydney Wilson
2009	Meghna Bal
	Jennifer Clark
	Meghan Gockel
	Sydney Wilson
2010	Meghan Gockel
2011	Meghna Bal
	Jennifer Clark
	Katy Nugent
	Grace Thiry
2012	Gabriella DiMarco
	Katy Nugent
	Meghan Potee
2013	Gabriella DiMarco
	Meghan Potee
2014	Meghan Potee

ACADEMIC ALL-BIG 12 CONFERENCE

1997	Lori Lauritsen (First Team)		Annie Giangrosso (First Team)
	Anne Clark (HM)	2008	Annie Giangrosso (First Team)
	Kelly Marney (HM)		Meghan Gockel (First Team)
	Missy Russell (HM)		Jaci Hiatt (First Team)
1998	Ashely Bishop (First Team)		JoJo Hallenbeck (Second Team)
	Jamie Tucker (First Team)	2009	Meghna Bal (First Team)
	Beth Reuter (HM)		Meghan Gockel (First Team)
	Susan Tessary (HM)		Jennifer Clark (First Team)
1999	Ashely Bishop (First Team)		Emily Powers (First Team)
	Ashley Lowery (Second Team)		Grace Thiry (First Team)
2000	Ashely Bishop (First Team)		Sydney Wilson (First Team)
	Carrie Padden (First Team)	2010	Meghna Bal (First Team)
	Andi Schultz (First Team)		Jennifer Clark (First Team)
2001	Tiffany Kruggel (First Team)		Meghan Gockel (First Team)
	Sarah Mahoney (First Team)		Emily Powers (First Team)
	Ashely Bishop (Second Team)		Grace Thiry (First Team)
2002	Jennifer Bawanan (First Team)		Sydney Wilson (First Team)
	Tiffany Kruggel (Second Team)	2011	Meghna Bal (First Team)
2003	Jennifer Bawanan (First Team)		Jennifer Clark (First Team)
	Tiffany Kruggel (First Team)		Grace Thiry (First Team)
	Jill MacDonald (First Team)		Thanuttra Boonraksasat(Second Team)
	Heather Rose (Second Team)	2012	Maria Jackson (First Team)
2004	Jennifer Bawanan (First Team)		Katy Nugent (First Team)
	Chelsey Pryor (First Team)		Meghan Potee (First Team)
	Meredith Winkelmann (First Team)		Audrey Yowell (First Team)
2005	Amanda Costner (First Team)	2013	Gabriella DiMarco (First Team)
	Chelsey Pryor (First Team)		Meghan Potee (First Team)
	Meredith Winkelmann(First Team)		Audrey Yowell (First Team)
2006	Amanda Costner (First Team)	2014	Yupaporn Kawinpakorn (First Team)
	Annie Giangrosso (First Team)		Minami Levonowich (First Team)
	Chelsey Pryor (First Team)		Meghan Potee (First Team)
	Meredith Winkelmann (First Team)		
2007	Amanda Costner (First Team)		



Amanda Costner
2007 Big 12 Medalist



Meghan Potee
2012, 2013, 2014
Academic All-Big 12



Meghan Gockel
2008, 2009, 2010
Academic All-Big 12



Emily Powers
2009, 2010
Academic All-Big 12

TEAM RECORDS

KANSAS TEAM TITLES

Year	Tournament	Team Score
1978	Wichita State Invitational	332-329--661
1983	Kansas Mini-Invitational	--
1986	North-South Classic	331-312-163--806
1986	Kansas Invitational (Kansas A)	321-313-320--954
1989	Snowbird Intercollegiate	322-305--627
1989	Shocker Classic (Kansas A)	326-325-326--977
1990	Big Eight Championship	312-311-313--936
1991	Alabama Intercollegiate	309-314-318--941
1992	Azalea Seahawk Invitational	316-307-297--920
1992	Yale Intercollegiate	321-333--654
1994	Aztec Invitational	334-334-333--1012
1997	SW Missouri State Invitational	321-336-348--1005
1997	Sunflower Invitational	315-317-300--932
2000	Kansas vs. Coastal Carolina	317--317
2000	Kansas vs. College of Charleston	308--308
2004	Sunflower Invitational	311-319-316--946
2006	Mountain View Collegiate	297-297-290--884
2006	Sunflower Invitational	304-306-307--917
2007	Marilynn Smith Invitational	302-298--600
2009	Duramed Collegiate Invitational	294-295-294--883
2010	Marilynn Smith Invitational	313-290-300--903
2012	Rio Verde Collegiate Invitational	312-297-291--900
2012	Marilynn Smith Sunflower Invitational	303-298-305--906
2012	Price's "Give Em' Five" Intercollegiate	294-289-288--871
2013	Jayhawk-Cornhusker Challenge	317--317
2013	Marilynn Smith Sunflower Invitational	303-299-308--910
2013	Palmetto Intercollegiate	297-295-284--876

KANSAS TEAM LOWEST ROUNDS

Year	Tournament	Score	Round
2013	Palmetto Intercollegiate	284	Third
2013	Cardinal Cup	286	Second
2007	Mountain View Collegiate	286	Third
2011	Edwin Watts/Palmetto Intercollegiate	287	Third
2012	Price's "Give Em' Five" Intercollegiate	288	Third
2012	Price's "Give Em' Five" Intercollegiate	289	Second
2010	Marilynn Smith Invitational	290	Second
2014	NCAA Regionals	290	Second
2007	Mountain View Collegiate	291	Second
2013	Sir Terrapin Pizza Challenge	292	First
2014	NCAA Championship	292	Fourth
2014	NCAA Championship	293	Second
2013	Indiana Invitational	293	Third
2005	Ptarmigan Ram Fall Classic	293	Second
1999	Moutnain View Collegiate	293	Second
2013	2013 Challenge at Onion Creek	294	Second
2009	Duramed Collegiate Invitational	294	Third
2009	Edwin Watts/Palmetto Intercollegiate	294	Third
2007	Susie Maxwell Berning Classic	294	Second
1999	Utah Dixie Classic	294	First
2014	3M Lady Jaguar Intercollegiate	294	Second
2014	2014 Briar's Creek Invitational	294	Third

KANSAS TEAM LOWEST 54 HOLES

Year	Tournament	Score	Finish
2012	Price's "Give Em' Five" Intercollegiate	871	First
2007	Mountain View Collegiate	874	T-Fourth
2013	Palmetto Intertollegiate	876	First
2013	Challenge at Onion Creek	876	Fourth
2013	Cardinal Cup	881	Second
2014	Ron Moore Women's Intercollegiate	884	Second
2006	Mountain View Collegiate	884	First
2007	Susie Maxwell Berning Classic	884	Fourth
2014	Big 12 Championship	886	T- Fourth
2010	Edwinn Watts/Palmetto Intercollegiate	887	Fourth



1990 Big Eight Champions

Front row (left to right): Carol Pfaff, Kim Herrelson, Cathy Keinbeck, Trisa Leibig
Back row (left to right): Lisa Luigs (assistant coach), Sherri Atchison, Laura Martin, Laura Myers, Donna Lowen, Shelly Triplett, Brad Demo (head coach)

NCAA CHAMPIONSHIP HISTORY

NCAA CHAMPIONSHIP HISTORY

1990 NCAA Championships

Arthur Hills Golf Course // Hilton Head, S.C. // May 23-26

	Rd 1	Rd 2	Rd 3	Rd 4	Total
14. KANSAS	323	324	310	313	1,270
T52. Laura Myers	82	78	86	80	316
T52. Sherri Atchison	84	78	80	74	316

1993 NCAA Championships

University of Georgia Golf Course // Athens, Ga. // May 26-29

	Rd 1	Rd 2	Rd 3	Rd 4	Total
T15. Holly Reynolds	77	72	76	74	299

2014 NCAA Championships

Tulsa Country Club // Tulsa, Okla. // May 20-23

	Rd 1	Rd 2	Rd 3	Rd 4	Total
24. KANSAS	323	324	310	313	1,270
T84. Yupaporn Kawinpakorn	83	71	75	70	299
T90. Thanuttra Boonraksasat	76	74	77	73	300
T94. Minami Levonowich	74	71	80	77	302
T122. Pornvipa Skadee	89	77	74	72	312
126. Meghan Potee	80	84	77	85	326

NCAA REGIONAL HISTORY

1993 NCAA West Regional

Randolph North Golf Course // Tucson, Ariz. // May 13-15

	Rd 1	Rd 2	Rd 3	Total
T9. Holly Reynolds	71	70	74	215

1994 NCAA West Regional

New Mexico Championship Golf Course // Albuquerque, N.M. // May 13-14

	Rd 1	Rd 2	Rd 3	Total
T15. Holly Reynolds	74	74	74	222

2006 NCAA Central Regional

Traditions Golf Club // Bryan, Texas // May 11-13

	Rd 1	Rd 2	Rd 3	Total
T26. Amanda Costner	78	76	75	229

2008 NCAA West Regional

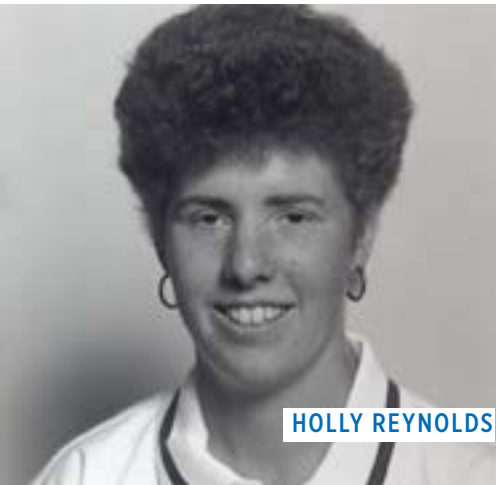
Lincoln Hills Golf Club // Lincoln, Calif. // May 8-10

	Rd 1	Rd 2	Rd 3	Total
T56. Emily Powers	80	77	71	228

2014 NCAA Central Regional

Karsten Creek Golf Club // Stillwater, Okla. // May 8-10

	Rd1	Rd 2	Rd 3	Total
T5. KANSAS	309	290	300	899
T19. Minami Levonowich	77	72	73	222
T24. Yupaporn Kawinpakorn	75	69	80	224
T45. Thanuttra Boonraksasat	81	74	74	229
T51. Pornvipa Sakdee	77	75	79	231
T66. Meghan Potee	80	79	74	233



HOLLY REYNOLDS

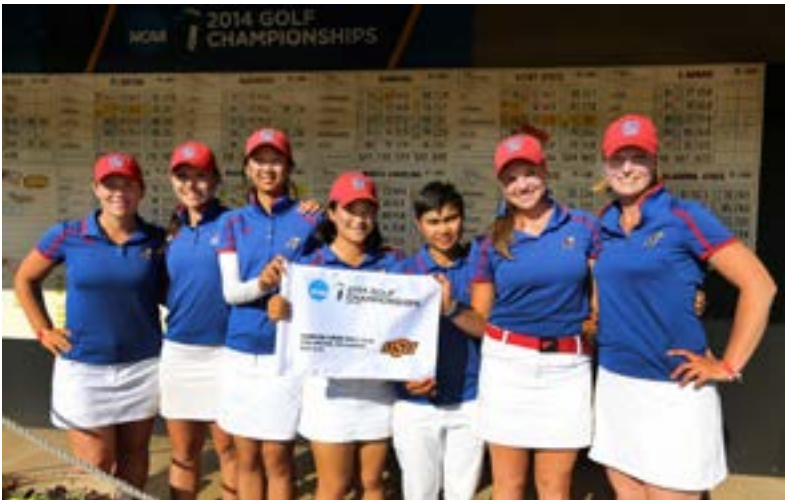
KU INDIVIDUAL RECORDS IN THE NCAA

Low Round: 69, Yupaporn Kawinpakorn (2014, Rd.2)

Low 54-hole Total: 215, Holly Reynolds (1993)

Best Finish (Regional): T9, Holly Reynolds (1993)

Best Finish (Championship): T15, Holly Reynolds (1993)



2014 NCAA Central Regional
Karsten Creek Golf Club, Stillwater, Oklahoma

BIG EIGHT / BIG 12 CHAMPIONSHIP HISTORY

BIG EIGHT CHAMPIONSHIP RESULTS

Year	Champion	Medalist	KU Finish	Top KU Finisher
1976	Nebraska, 684	Lindsey Wetzel, Oklahoma (164)	2/6 (701)	
1977	Oklahoma State, 671	Patty Zimmer, Oklahoma State (158)	2/6 (697)	
1978	Oklahoma, 653	Alicia Ogrin, Oklahoma State (154)	3/6 (663)	
1979	Oklahoma State, 949	Alicia Ogrin, Oklahoma State (232)	6/7 (1,004)	
1980	Oklahoma State, 930	Val Skinner, Oklahoma State (225)	6/7 (1,001)	
1981	Oklahoma, 922	Dorea Mitchell, Oklahoma (227)	6/7 (329-335-344--1,008)	T11. Patty Coe (80-79-81--241)
1982	Oklahoma State, 917	Val Skinner, Oklahoma State (216)	6/7 (338-341-331--1,010)	T12. Bev Boozer (83-79-86--248)
1983	Nebraska, 953	Janice Burba, Oklahoma State (233)	t4/7 (1,009)	T8. Patty Coe (241)
1984	Oklahoma State, 934	Robin Hood, Oklahoma State (224)	6/7 (352-340-347--1,039)	T16. Brenda Sanders (82-83-87--252)
1985	Oklahoma State, 934	Lisa Stone, Oklahoma State (231)	3/7 (324-337-347--1,008)	10. Tina Gnewuch (79-82-88--249)
1986	Oklahoma State, 924	Robin Hood, Oklahoma State (220)	6/7 (330-334-333--997)	13. Susan Pekar (81-81-78--240)
1987	Oklahoma State, 912	Eva Dahloff, Oklahoma State (228)	4/7 (342-320-314--976)	15. Tina Gnewuch (86-80-76--242)
1988	Oklahoma State, 944	Eva Dahloff, Oklahoma State (234)	4/7 (1,009)	11. Susan Pekar (82-81-87--250)
1989	Oklahoma State, 935	Eva Dahloff, Oklahoma State (229)	5/7 (329-324-337--990)	T11. Sherri Atchison (80-83-76--241)
1990	KANSAS, 936	Marnie McGuire, Oklahoma State (230)	1/7 (312-311-313--936)	2. Donna Lowen (80-76-75--231)
1991	Oklahoma, 943	Cathy Stevens, Oklahoma (232)	4/7 (335-324-322--981)	9. Shelly Triplett (81-75-81--237)
1992	Oklahoma State, 914	Arantza Sison, Oklahoma State (220)	3/7 (323-311-317--951)	T6. Holly Reynolds (82-76-77--235)
1993	Iowa State, 945	Shelley Finnestad, Iowa State (232)	t5/8 (333-340-344--1,017)	T8. Holly Reynolds (78-83-80--241)
1994	Oklahoma State, 919	Charlotta Eliasson, Oklahoma State (221)	6/8 (325-322-331--978)	10. Holly Reynolds (76-75-81--232)
1995	Oklahoma State, 937	Amy Weeks, Oklahoma State (226)	6/8 (337-339-339--1,015)	4. Michelle Uher (81-78-79--238)
1996	Oklahoma State, 946	Rachelle Tacha, Nebraska (227)	7/8 (353-342-330--1,025)	T21. Missy Russell (89-86-76--251)

BIG 12 CHAMPIONSHIP RESULTS

Year	Champion	Medalist	KU Finish	Top KU Finisher
1997	Texas, 924	Heather Bowie, Texas (212)	7/12 (311-320-328--959)	T16. Missy Russell (77-82-80--239)
1998	Texas A&M, 919	Isabelle Rosberg, Texas A&M (225)	9/12 (329-315-328--972)	T39. Mandy Munsch (80-83-91--244)
1999	Oklahoma State, 906	Maria Boden, Oklahoma State (219)	11/12 (310-314-327--951)	T16. Mandy Munsch (74-79-77--230)
2000	Oklahoma, 916	Amelia Moses, Missouri (222)	12/12 (327-321-330--978)	T25. Sarah Mahoney (80-78-78--236)
2001	Oklahoma State, 925	Maria Boden, Oklahoma State (227)	12/12 (358-324-255--1,007)	T29. Heather Rose (82-79-83--244)
2002	Oklahoma State, 909	Emma Zackrisson, Oklahoma St. (223)	12/12 (332-321-336--989)	T32. Heather Rose (89-78-77--238)
2003	Oklahoma State, 909	Sarah Sasse, Nebraska (220)	11/12 (325-322-326--973)	T22. Jennifer Bawanan (80-79-77--235)
2004	Texas, 952	Annie Thruman, Oklahoma State (137)	8/12 (305-312--617)	T7. Amanda Costner (75-73--148)
2005	Oklahoma State, 900	Annie Thurman-Young, Okla. St. (212)	9/12 (311-331-310--952)	T26. Chelsey Pryor (73-81-81--235)
2006	Texas A&M, 899	Ashley Knoll, Texas A&M (215)	11/12 (316-318-321--955)	T14. Amanda Costner (79-78-74--231)
2007	Texas A&M, 911	AMANDA COSTNER, KANSAS (221)	9/12 (312-314-319--945)	1. AMANDA COSTNER (71-73-77--221)
2008	Oklahoma State, 912	Jaclyn Sweeny, Oklahoma State (225)	10/12 (333-325-340--998)	T29. Emily Powers (80-82-85--247)
2009	Oklahoma State, 909	Kendall Dye, Oklahoma (225)	5/12 (312-310-323--945)	T6. Meghan Gockel (75-76-79--230)
		Ashley Freeman, Texas A&M (225)		
2010	Texas A&M, 896	Caroline Hedwall, Okla. St. (210)	12/12 (314-312-312--938)	T28. Emily Powers (78-77-76--231)
2011	Texas, 872	Madison Pressel, Texas (208)	11/12 (302-305-304--911)	T23. Thanuttra Boonraksasat (76-73-75--224)
2012	Oklahoma, 904	Chirapat Jao-Javanil, Oklahoma (220)	10/10 (338-307-306--951)	T30. Thanuttra Boonraksasat (83-75-78--236)
				T30. Audrey Yowell (78-84-74--236)
2013	Oklahoma State, 905	Lauren Taylor, Baylor (213)	8/9 (322-304-315--941)	T10. Yupaporn Kawinpakorn (76-77-76--229)
2014	Oklahoma, 861	Chirapat Jao-Javanil (209)	T4/9 (297-295-294--886)	T2. Yupaporn Kawinpakorn (69-73-69--211)

KU WOMEN'S GOLF HISTORY (SINCE 1980)

Date	Tournament	Result	Top KU Individual
FALL 1980			
Sept. 15-17	Susie Maxwell Berning Classic	21/24 (325-346-339—1,010)	Patty Coe – 247
Sept. 26-27	Iowa State Invitational	7/13 (327-333—660)	Sally Donnini – T32/166
Oct. 9-10	Kansas Invitational	3/6 (335-355—690)	Cathy Eyre – T10/168
SPRING 1981			
April 9-12	Tiger Classic	4/6 (1,001)	Patty Coe – 239
April 19-22	Sooner Invitational	8/10 (1,018)	Sarah Burgess – 246
April 27-29	Big Eight Championship	6/7 (329-335-344—1,008)	Patty Coe – T11/240
FALL 1981			
Sept. 14-16	Susie Maxwell Berning Classic	21/21 (323-338-335—996)	Bev Boozer – T74/245
Sept. 21-22	Iowa State Invitational	9/11 (331-321-338—990)	Bev Boozer – 150
Oct. 16-18	Mizzou Invitational	6/10 (327-328-345—1,000)	Lisa Bradley – T1/242
Oct. 22-23	Kansas Invitational	4/6 (338-330-324—992)	Lisa Bradley – 3/237
SPRING 1982			
March 18-20	Tiger Tangle	6/7 (1,080)	Bev Boozer – 279
April 2-4	Missouri Invitational	3/5 (1,036)	Bev Boozer – 254
April 26-28	Big Eight Championship	6/7 (338-341-331—1,010)	Bev Boozer – T12/248
May 1-2	Stephens Invitational	4/8 (916)	Bev Boozer – T3/224
FALL 1982			
Sept. 13-15	Susie Maxwell Berning Classic	18/18 (327-335-344—1,006)	Bev Boozer – T42/238
Sept. 30-Oct. 2	Iowa State Invitational	6/9 (347-321-352—1,020)	Bev Boozer – T13/254
Oct. 14-15	Kansas Invitational	4/7 (336-336-343—1,015)	Bev Boozer – 2/236
Oct. 21-23	Missouri Invitational	5/6 (322-342-325—999)	Patty Coe – 245
FALL 1981			
Sept. 14-16	Susie Maxwell Berning Classic	21/21 (325-346-339 – 1,010)	Bev Boozer – T74/245
Sept. 21-22	Iowa State Invitational	9/11 (331-321-338 – 990)	Bev Boozer – 150
Oct. 16-18	Mizzou Invitational	6/10 9327-328-345 – 1,000)	Lisa Bradley – T1/242
Oct. 22-23	Kansas Invitational	4/6 (338-330-324 – 992)	Lisa Bradley – 2/237
SPRING 1982			
March 18-20	Tiger Tangle	6/7 (1,080)	Bev Boozer – 279
April 2-4	Missouri Invitational	3/5 (1,036)	Bev Boozer – 254
April 26-28	Big Eight Championship	6/7 (338-341-331—1,010)	Bev Boozer – T12/248
May 1-2	Stephens Invitational	4/8 (916)	Bev Boozer – T3/224
FALL 1982			
Sept. 13-15	Susie Maxwell Berning Classic	18/18 (327-335-344—1,006)	Bev Boozer – T42/238
Sept. 30-Oct. 2	Iowa State Invitational	6/9 (347-321-352—1,020)	Bev Boozer – T13/254
Oct. 14-15	Kansas Invitational	4/7 (336-336-343—1,015)	Bev Boozer – 2/236
Oct. 21-23	Missouri Invitational	5/6 (322-342-325—999)	Patty Coe – 245
SPRING 1983			
March 31-April 1	Missouri Invitational	5/7 (333)	Patty Coe – T3/77
April 18	Kansas Mini-Invitational	1/8	Bev Boozer – 79
April 25-27	Big Eight Championship	t4/8 (1,009)	Patty Coe – 241
May 1	Stephens College Invitational	4/6 (323)	Patty Coe – 117

KU WOMEN'S GOLF HISTORY

Date	Tournament	Result	Top KU Individual
FALL 1983			
Sept. 12-14	Susie Maxwell Berning Classic	16/16 (342-346-344—1,032)	Solveig Thorsteindottir – 255
Sept. 30-Oct. 2	Lady Northern	17/19 (337-334-331—1,002)	Sue Pekar – 241
Oct. 9-10	Missouri Invitational	4/6 (353-336-334—1,023)	Brenda Sanders – 11/248
Oct. 17-18	Kansas Invitational	4/8 (339-341-340—1,020)	Brenda Sanders – 10/246
SPRING 1984			
April 3	Big Red Invitational	8/8 (352-349-359—1,060)	LeeAnn Loeffelholz – 24/255
April 16-17	Kansas State Invitational	4/6 (355-336-342—1,033)	Maureen Kelly – T10/252
April 23-25	Big Eight Championship	6/7 (352-340-347—1,039)	Brenda Sanders – T16/252
April 28-29	Stephens College Invitational	4/5 (337-349-335—1,021)	Solveig Thorsteindottir – T9/249
FALL 1984			
Sept. 10-12	Susie Maxwell Berning Classic	6/8 (335-315-332—984)	Maureen Kelly – T5/236
Sept. 16-18	Oklahoma State Invitational	13/14 (360-345-357—1,062)	Maureen Kelly – T54/258
Sept. 28-29	Northern Iowa Invitational	4/6 (331-319-318—968)	Maureen Kelly – T6/237
Oct. 15-16	Kansas Invitational	2/8 (327-338—665)	Tina Gnewuch – 3/161
Oct. 20-21	Missouri Invitational	4/9 (337-335-323—995)	Tina Gnewuch – T3/241
SPRING 1985			
March 31	South Carolina Invitational	14/14 (337-342-332—1,011)	Marilee Scheid – 53/251
April 8-9	Big Red Invitational	6/10 (338-335-337—1,010)	Maureen Kelly – T11/246
April 12-13	Illini Spring Classic	11/16 (342-352-352—1,046)	Brenda Sanders – T26/254
April 22-23	Big Eight Championship	3/7 (324-337-347—1,008)	Tina Gnewuch – 10/249
April 25-27	Washington Gearhart Invitational	4/4 (331-350—681)	Maureen Kelly – 9/165
FALL 1985			
Sept. 20-22	Lady Seminole Invitational	17/19 (337-324-330—991)	Tina Gnewuch – T75/246
Sept. 26-28	Northern Iowa Invitational	3/8(334-327-328—989)	Maureen Kelly – 7/244
Oct. 3-6	Memphis Invitational	15/17 (334-324-335—993)	Tina Gnewuch – T250
Oct. 12-15	Beacon Woods Invitational	5/7 (334-312-321—967)	Marilee Scheid – T250
Oct. 21-22	Kansas Invitational		Maureen Kelly – 234
	Kansas A	4/8 (324-318-330—972)	Marilee Scheid – T10/241
	Kansas B	6/8 (333-333-334—1,000)	Sue Pekar – 14/243
SPRING 1986			
March 13-15	North-South Classic	1/6 (331-312-163—806)	Sue Pekar – T2/195
March 21-22	Rayburn Classic	3/4 (338-347-338—1,023)	Marilee Scheid – 250
March 29-30	South Carolina Invitational	13/13 (345-331-336—1,012)	Tina Gnewuch – T48/246
April 7-8	Susie Maxwell Berning Classic	9/12 (350-327-346—1,023)	Tina Gnewuch – T19/251
April 14-15	Pepsi Women's Classic	6/8 (371-340—711)	Tina Gnewuch – T8/171
April 28-29	Big Eight Championship	6/7 (330-334-333—997)	Sue Pekar – 13/240
FALL 1986			
Sept. 12-13	Iowa State Invitational	5/10 (331-329-335—995)	Sue Pekar – T7/240
Sept. 10-12	All College Kickoff	10/12(334-317-318—969)	Sue Pekar – T30/241
Sept. 26-28	Lady Seminole Invitational	9/17 (315-319-330—964)	Sue Pekar – T9/232
Oct. 3-5	Beacon Woods Invitational	9/12 (318-320-325—963)	Sue Pekar – 232
Oct. 20-21	Kansas Invitational		

KU WOMEN’S GOLF HISTORY

Date	Tournament	Result	Top KU Individual
SPRING 1987			
March 18-19	Illini Spring Break Classic	3/13 (305-314—619)	Sue Pekar – T7/152
March 29-31	Peggy Kirk Bell Invitational	6/10 (345)	Sue Pekar - 84
April 6-7	Susie Maxwell Berning Classic	7/14 (338-338-334—1,010)	Tina Gnewuch – T22/253
April 11-12	Missouri Invitational	3/12 (321-314—635)	Sue Pekar – 1/150
April 18-19	Lady Buckeye Invitational	7/14 (322-317-319—951)	Tina Gnewuch – T8/226
April 27-28	Big Eight Championship	4/7 (342-320-314—976)	Sue Pekar – T12/238

FALL 1986

Sept. 10-12	All College Kickoff	10/12(334-317-318—969)	Sue Pekar – T30/241
Sept. 12-13	Iowa State Invitational	5/10 (331-329-335—995)	Sue Pekar – T7/240
Sept. 26-28	Lady Seminole Invitational	9/17 (315-319-330—964)	Sue Pekar – T9/232
Oct. 3-5	Beacon Woods Invitational	9/12 (318-320-325—963)	Sue Pekar – 232
Oct. 20-21	Kansas Invitational		
	Kansas A	1/8 (321-313-320—954)	Sue Pekar – T4/236
	Kansas B	3/8 (318-323-318—959)	Marilee Scheid – T4/236

SPRING 1987

March 18-19	Illini Spring Break Classic	3/13 (305-314—619)	Sue Pekar – T7/152
March 29-31	Peggy Kirk Bell Invitational	6/10 (345)	Sue Pekar - 84
April 6-7	Susie Maxwell Berning Classic	7/14 (338-338-334—1,010)	Tina Gnewuch – T22/253
April 11-12	Missouri Invitational	3/12 (321-314—635)	Sue Pekar – 1/150
April 18-19	Lady Buckeye Invitational	7/14 (322-317-319—951)	Tina Gnewuch – T8/226
April 27-28	Big Eight Championship	4/7 (342-320-314—976)	Sue Pekar – T12/238

FALL 1987

Sept. 4-5	Iowa State Cyclone Classic	3/9 (325-323-332—980)	Tina Gnewuch – T5/237
Sept. 12-13	Iowa Invitational	6/8 (327-321-330—978)	Sue Pekar – 8/27
Oct. 9-11	Beacon Woods Invitational	13/14 (337-327-315—979)	Sue Pekar – 52/244
Oct. 19-20	Kansas Invitational	3/8 (344-321-338—1,003)	Tina Gnewuch – 2/241

SPRING 1988

March 19-20	Peggy Kirk Bell Invitational	3/16 (320-333-331—984)	Sue Pekar – T6/237
March 29-30	Illini Spring Break Classic	4/8 (317-307-320—944)	Sue Pekar – 2/226
April 11-12	Nebraska Invitational	3/9 (320-328-318—966)	Sue Pekar – 2/231
April 25-26	Big Eight Championship	4/7 (335-325-349—1,009)	Sue Pekar – 11/250

FALL 1988

Sept. 2-3	Iowa State Cyclone Classic	3/9 (317-333—650)	Laura Myers – 4/160
Sept. 23-24	Air Force Academy Classic	2/10 (346-332-318—996)	Shelly Triplett – 2/242
Sept. 30-Oct. 1	Wichita State Shocker Classic		
	Kansas A	1/7 (308-316-318—942)	Laura Myers – T3/231
	Kansas B	3/7 (339-333-334—1,006)	Donna Lowen – 6/233
Nov. 2-4	Texas Invitational	1/5 (310-314—624)	Shelly Triplett – T1/155
			Sherri Atchison – T1/155

KU WOMEN’S GOLF HISTORY

Date	Tournament	Result	Top KU Individual
SPRING 1989			
March 5-6	Utah Dixie Classic	3/12 (308-307-311—926)	Shelly Triplett – 2/220
March 13-14	Snowbird Intercollegiate	1/8 (322-305—627)	Laura Meyers – T2/155
			Shelly Triplett – T2/155
March 24-25	USF Summerfield Invitational	6/10 (325-325-316—966)	Laura Myers – 13/237
April 8-9	Lady Paladin Golf Tournament	8/12 (330)	Laura Myers – T8/78
April 17-18	Nebraska Invitational	2/6 (329-308-318—955)	Donna Lowen - 233
April 24-25	Big Eight Championship	5/7 (329-324-327—990)	Sherri Atchison – T11/243

FALL 1989

Sept. 15-17	Roadrunner Invitational	3/12 (318-318-317—953)	Sherri Atchison – T8/236
			Laura Myers – T8/236
Sept. 23-24	All-College Kickoff	2/11 (329-330-313—972)	Donna Lowen – T4/238
Oct. 2-3	Shocker Classic		
	Kansas A	1/7 (326-325-326—977)	Sherri Atchison – 2/241
	Kansas B	5/7 (1081)	Trisa Leibig – 11/258
Nov. 5-6	Lamar Cardinal Invitational	5/10 (320-309-312—941)	Sherri Atchison – T8/230

SPRING 1990

March 5-6	Utah Dixie Classic	4/18 (314-333-313—960)	Laura Myers – 16/240
March 12-13	Peggy Kirk Bell Invitational	4/17 (311-310-311—932)	Donna Lowen – 4/226
April 2-3	Susie Maxwell Berning Classic	2/12 (331-318-308—957)	Laura Myers – T4/237
April 13-15	Azalea Festival Tournament	2/6 (316-310-308—934)	Donna Lowen – 3/229
April 23-24	Big Eight Championship	1/7 (312-311-313—936)	Donna Lowen – 2/231
May 23-26	NCAA Championship	14/17 (323-324-310-313—1,270)	Laura Myers – T52/316
			Sherri Atchison - T52/316

FALL 1990

Sept. 16-18	Roadrunner Invitational	5/12 (318-311-322—951)	Shelly Triplett - 231
Oct. 15-17	Edean Ihlanfeldt Invitational	4/15 (327-324-314—965)	Laura Myers – T9/237
Nov. 16-18	Palmetto Dunes Collegiate	11/12 (323-317-325—965)	Shelly Triplett – T32/238

SPRING 1991

March 4-5	Utah Dixie Classic	4/19 (317-320-335—972)	Laura Myers – 11/241
March 11-12	Peggy Kirk Bell Invitational	7/19 (328-331-317—976)	Laura Myers – T8/238
April 6-7	Earl Steward Lady Mustang	8/12 (317-321-311—949)	Laura Myers – T11/229
April 12-14	Azalea/Seahawk Invitational	4/13 (326-316-314—956)	Laura Myers – T4/233
April 29-30	Big Eight Championship	4/7 (335-324-322—981)	Shelly Triplett – 9/237

FALL 1991

Sept. 14-15	Minnesota Invitational	3/9 (312-315—627)	Laura Myers – 2/153
Sept. 26-28	Dick McGuire Invitational	6/18 (320-313-314—947)	Laura Myers – T12/233
			Holly Reynolds – T12/233
Oct. 6-8	Alabama Intercollegiate	1/9 (309-314-318—941)	Shelly Triplett – 1/226
Oct. 14-16	Edean Ihlandfeldt Invitational	5/15 (326-305-319—950)	Laura Myers –T14/235

KU WOMEN'S GOLF HISTORY

Date	Tournament	Result	Top KU Individual
SPRING 1992			
March 9-10	Utah Dixie Classic	2/18 (318-317-309—944)	Laura Myers – 1/226
March 27-29	South Carolina Invitational	10/14 (318-311-325—954)	Shelly Triplett – T13/234
April 10-12	Azalea Seahawk Invitational	1/9 (316-307-297—920)	Holly Reynolds – 1/220
April 27-28	Big Eight Championship	3/7 (323-311-317—951)	Holly Reynolds – T6/235
FALL 1992			
Sept. 11-13	Roadrunner Invitational	T7/14 (334-325-332—991)	Holly Reynolds – T2/228
Sept. 26-27	Cyclone Classic	3/11 (331-336—667)	Holly Reynolds – 1/156
Oct. 3-4	Yale Intercollegiate	1/10 (321-333—654)	Holly Reynolds – 1/153
Oct. 12-13	Shocker Fall Classic	2/10 (334-330-347—1,011)	Holly Reynolds – 1/234
SPRING 1993			
March 8-9	Utah Dixie Classic	T12/15 (326-324-324—974)	Holly Reynolds – 1/224
March 26-28	Lady Gamecock Classic	12/18 (319-331-323—973)	Holly Reynolds – T13/230
April 3-4	Indiana Invitational	1014 (336-349—685)	Holly Reynolds – T5/158
April 11-13	Susie Maxwell Berning Classic	8/11 (338-313-332—983)	Holly Reynolds – 6/232
April 25-26	Big Eight Championship	T5/7 (333-340-344—1,017)	Holly Reynolds – T8/241
May 13-15	NCAA West Regional	No team participation	Holly Reynolds – T9/215
May 26-29	NCAA Championships	No team participation	Holly Reynolds – T15/299
FALL 1993			
Sept. 10-12	Roadrunner Invitational	11/16 (341-338-331—1,010)	Holly Reynolds –T7/230
Sept. 26	Hawkeye Invitational	3/10 (312—312)	Holly Reynolds – T4/75
Oct. 1-2	OSU Nike Invitational	5/13 (318-315-322—955)	Holly Reynolds – T2/223
Oct. 18-19	Jayhawk Invitational	4/9 (326-336-327—989)	Holly Reynolds – T2/226
Nov. 5-7	Texas A&M Bookstore Memorial	12/17 (335-335-338—1,008)	Holly Reynolds – T8/240
SPRING 1994			
March 7-8	Utah Dixie Classic	9/19 (322-316-321—959)	Holly Reynolds – 2/220
March 24-25	Aztec Invitational	1/5 (334-335-333—1,012)	Holly Reynolds – 1/227
April 2-3	Indiana Invitational	9/18 (317-319-338—974)	Holly Reynolds – 1/223
April 11-12	Susie Maxwell Berning Classic	5/12 (324-327-330—981)	Holly Reynolds – T6/237
April 25-26	Big Eight Championship	6/7 (325-322-331—978)	Holly Reynolds – 10/232
May 13-14	NCAA West Regional	No team participation	Holly Reynolds - T15/222
FALL 1994			
Sept. 9-11	Roadrunner Invitational	9/17 (331-323-314—968)	Missy Russell – T22/237
Sept. 24-25	Spartan Fall Invitational	9/21 (329-324—653)	Michelle Uher – T15/158
Oct. 3-4	Nike Invitational	6/16 (329-328-316—973)	Lynn Williamson – T27/238
Oct. 17-18	Sunflower Invitational	6/11 (350-344-335—1,029)	Michelle Uher – T15/253
SPRING 1995			
March 6-7	Utah Dixie Classic	10/18 (321-327—648)	Michelle Uher – T28/160
March 20-22	Lady Bronc Classic	5/9 (345-335-334—1,014)	Ann Holbrook – T9/250
March 24-25	Texas A&M Bookstore Memorial	T4/17 (321-317-317—955)	Missy Russell – T9/234
April 1-2	Indiana Invitational	T4/15 (313-320-325—958)	Missy Russell – T4/231
April 10-11	Susie Maxwell Berning Classic	5/12 (326—326)	Michelle Uher – 2/75
April 24-25	Big Eight Championship	6/8 (337-339-339—1,015)	Michelle Uher – 4/238

KU WOMEN'S GOLF HISTORY

Date	Tournament	Result	Top KU Individual
FALL 1995			
Sept. 9-10	Minnesota Invitational	5/11 (323-326—649)	Lori Lauritsen – T6/158
Sept. 25-26	Northwest Women's Collegiate	12/18 (326-312-327—965)	Mandy Munsch – T21/264
Oct. 7-8	Lady Buckeye Fall Invitational	5/13 (322-340-324—986)	Mandy Munsch – 8/238
Oct. 16-17	Sunflower Invitational	7/14 (324-322-348—994)	Mandy Munsch – T12/243
Oct. 30-31	Lamar Lady Cardinal Invite	10/12 (331-330-331—992)	Anne Clark – T24/246
SPRING 1996			
March 18-20	Lady Bronc Classic	T7/16 (361-327-321—1,009)	Missy Russell – T7/245
April 1-2	SW Missouri State Invitational	2/16 (328-330-330—988)	Missy Russell – 1/234
April 8-9	Susie Maxwell Berning Classic	8/12 (337-329-326—992)	Anne Clark – T21/243
April 13-14	Boilermaker Invitational	9/12 (331-320-333—984)	Beth Reuter – T19/243
April 22-23	Big Eight Championship	7/8 (353-342-330—1,025)	Missy Russell – T21/251
FALL 1996			
Sept. 14-15	Minnesota Invitational	4/15 (327-313—640)	Missy Russell – T15/158
Sept. 23-25	Northwest Invitational	6/18 (330-318-318—966)	Missy Russell – T13/238
Oct. 7-8	Big 12 Preview	7/12 (318-316-315—949)	Anne Clark – T20/236
Oct. 14-15	Sunflower Invitational	T6/14(326-324-335—985)	Anne Clark – T8/239
Oct. 28-30	Roadrunner Invitational	9/19 (342-321-319—982)	Missy Russell – T16/238
SPRING 1997			
Feb. 24-25	Texas A&M Bookstore Memorial	10/18 (324-328-350—1,002)	Mandy Munsch – T25/245
March 3-4	Bay Area Classic	8/17 (347-329—676)	Beth Reuter – T21/169
			Missy Russell – T21/169
			Susan Tessary – T21/169
March 17-19	UNM Spring Intercollegiate	8/15 (326-330-315—971)	Susan Tessary – T20/239
March 24-25	SW Missouri State Invitational	1/8 (321-336-348—1,005)	Anne Clark – 5/248
April 7-8	Utah Dixie Classic	8/18 (327-311-329—967)	Anne Clark – T28/238
April 14-15	Susie Maxwell Berning Classic	6/11 (315-327-326—968)	Missy Russell – 6/232
April 21-23	Big 12 Championship	7/12 (311-320-328—959)	Missy Russell – T16/23
FALL 1997			
Sept. 22-23	Northwest Invitational	8/14 (338-326-333—997)	Mandy Munsch – T25/244
Sept. 25-27	Dick McGuire Invitational	16/18 (315-311-317—943)	Jamie Tucker – T31/232
Oct. 21-22	Sunflower Invitational	1/11 (315-317-300—932)	Jamie Tucker – T1/226
Nov. 2-4	Diet Coke Roadrunner Invite	7/19 (304-313-315—932)	Mandy Munsch – T20/229
			Susan Tessary – T20/229
SPRING 1998			
Feb. 23-24	GTE “Mo”morial Invitational	8/16 (322-322-325—969)	Jamie Tucker – T22/237
March 2-3	Bay Area Classic	6/19 (326-311—637)	Jamie Tucker – T7/151
March 14-16	Betsy Rawls Longhorn Classic	12/14 (340-331-333—1,004)	Jamie Tucker – T21/237
April 6-7	Utah Dixie Classic	T5/24 (311-310—621)	Jamie Tucker – T11/151
			Susan Tessary – T11/151
			Susan Tessary – T7/229
April 18-19	Hawkeye Invitational	8/10 (325-312-313—950)	Beth Reuter – T33/241
April 24-26	Big 12 Championship	9/12 (329-315-328—972)	

KU WOMEN'S GOLF HISTORY

Date	Tournament	Result	Top KU Individual
FALL 1998			
Sept. 14-15	Chip-N Club Invitational	13/15 (328-322-316—966)	Susan Tessary - T11/227
Sept. 21-22	Heather Farr Memorial Tournament	11/14 (310-319-327—956)	Susan Tessary - T26/234
Oct. 3-4	Big 12 Fall Preview	11/12 (326-323-323—972)	Susan Tessary - T23/235
Oct. 12-13	Shoot-out at the Legends	10/15 (313-304-319—936)	Mandy Munsch - T28/232
Oct. 30-Nov. 1	Diet Coke/Roadrunner Invitational	9/18 (321-306-313—940)	Susan Tessary - T13/230
SPRING 1999			
Feb. 26-28	Sun Trust Lady Gator Invitational	18/19 (337-332—669)	Mandy Munsch - T54/163
March 13-14	Mountain View Collegiate	3/9 (314-293—607)	Mandy Munsch - T5/148
March 26-28	Betsy Rawls Longhorn Classic	7/8 (326-324-318—968)	Susan Tessary - 13/234
April 4-6	Utah Dixie Classic	4/24 (294-314-319—927)	Mandy Munsch - T2/223
April 12-13	Susie Maxwell Berning Classic	9/15 (321-314-323—958)	Mandy Munsch - T18/235
April 19-21	Big 12 Championship	11/12 (310-314-327—951)	Mandy Munsch - T16/230
FALL 1999			
Sept. 13-14	Big 12 Preview	11/12 (320-318-322—960)	Sarah Mahoney - T8/228
Sept. 23-24	Dick McGuire Invitational	17/18 (319-325-320—964)	Sarah Mahoney - T49/234
Oct. 11-12	Shoot-out at the Legends	12/12 (318-310-314—942)	Susan Tessary - T13/224
Nov. 1-3	Diet Coke/Roadrunner Invitational	21/21 (330-339-317—986)	Sarah Mahoney - T69/242
SPRING 2000			
Feb. 18-19	Kansas vs. Indiana	2/2 (336-327—663)	Susan Tessary - 3/162
Feb. 28-29	Carolinas Classic	5/26 (317-314—631)	Susan Tessary - T2/152
March 10-11	N. Illinois Springlake Intercollegiate	4/18 (313-310—623)	Sarah Mahoney - T11/154
March 22	Kansas vs. Coastal Carolina	1/2 (317—317)	Sarah Mahoney - 1/7
March 23	Kansas vs. College of Charleston	1/2 (308—308)	Ashely Bishop - T1/75
April 3-4	Utah Dixie Classic	5/20 (309-304-310—923)	Susan Tessary - T5/220
April 10-11	Susie Maxwell Berning Classic	9/13 (328-327-327—982)	Carrie Padden - 19/241
April 21-23	Big 12 Championship	12/12 (327-321-330—978)	Sarah Mahoney - T25/236
FALL 2000			
Sept. 8-10	Unlimited Potential Baytree Classic	14/18 (313-319-310—942)	Ashely Bishop - T30/233
Sept. 23-24	Mary Fossum Invitational	15/15 (328—328)	Tiffany Kruggel - T46/79
Oct. 2-3	Big 12 Fall Preview	12/12 (329-324-316—969)	Ashely Bishop - T28/233
Oct. 9-10	Shoot-out at the Legends	14/15 (322-325-312—959)	Ashely Bishop - T45/231
Oct. 15-17	Sunflower Invitational	5/8 (321-304-341—966)	Jennifer Bawanan - T22/240
SPRING 2001			
Feb. 19-20	Islander Invitational	4/15 (324-324-309—957)	Chrystal Thayer - T2/234
Feb. 26-27	Carolinas Classic	T6/22 (323-321—644)	Tiffany Kruggel - T9/156
March 5-6	Verizon "Mo"morial Invitational	10/17 (321-313-321—955)	Tiffany Kruggel - T27/237
April 7-8	Indiana Invitational	10/15 (335-328-319—982)	Ashely Bishop - T36/244
April 14-15	Hawkeye Invitational	9/12 (316-313-319—948)	Ashely Bishop - T23/235
April 23-25	Big 12 Championship	12/12 (358-324-325—1,007)	Heather Rose - T29/244
FALL 2001			
Sept. 7-9	Unlimited Potential Bay Tree Classic	14/31 (324-320-322—966)	Heather Rose - T45/241
Sept. 26	Sunflower Cup	2/2 (320—320)	Jennifer Bawanan - 1/71
Oct. 1-2	Big 12 Invitational	14/16 (322-325-340—987)	Jill MacDonald - T19/234
Oct. 8-9	Shoot-out at the Legends	16/19 (307-311-321—939)	Heather Rose - T33/229
Oct. 15-16	Sunflower Invitational	10/17 (328—328)	Heather Rose - T9/77

Date	Tournament	Result	Top KU Individual
SPRING 2002			
Feb. 18-19	Islander Invitational	3/13 (338-319-306—963)	Jill MacDonald - T9/239
Feb. 25-26	Carolinas Classic	T12/22 (320-328—648)	Jennifer Bawanan - T32/159
March 4-5	Verizon "Mo"morial Invitational	T16/18 (346-324—670)	Jill MacDonald - T36/163
March 11-12	Waterwood National Spring Invitational	7/17 (334-314-339—987)	Heather Rose - 1/235
April 6-7	Indiana Invitational	13/14 (329-329-322—980)	Heather Rose - T28/240
April 13-14	Hawkeye Invitational	7/10 (306-311-320—937)	Jill MacDonald - 3/221
April 19-21	Big 12 Championship	12/12 (332-321-336—989)	Heather Rose - T32/238
FALL 2002			
Sept. 6-8	Unlimited Potential Bay Tree Classic	14/35 (318-322-309—949)	Jill MacDonald - T39/235
Sept. 16-17	Chip-N Club Invitational	8/14 (319-310-309—938)	Jennifer Bawanan - T15/232
Oct. 7-8	Shoot-out at the Legends	11/16 (309-306-310—925)	Tiffany Kruggel - T17/226
Oct. 13-15	Sunflower Invitational	T3/17 (309-303-312—924)	Heather Rose - 7/226
Oct. 29-30	Kent Youel Invitational	11/17 (308-314-308—930)	Jill MacDonald - T37/231
SPRING 2003			
Feb. 17-18	Lady Aztec Spring Invitational	2/15 (304-309—613)	Jennifer Bawanan - 1/148
Feb. 28-March 2	Carolinas Classic	9/22 (323-313-334—970)	Chelsey Pryor - T13/233
March 10-11	Anteater Invitational	8/13 (322-330-314—966)	Heather Rose - T14/234
March 23-25	Betsy Rawls Longhorn Invitational	12/12 (333-345-335—1013)	Tiffany Kruggel - T42/248
April 7-8	Susie Maxwell Berning Classic	8/16 (325-316-333—974)	Chelesy Pryor - T22/241
April 21-23	Big 12 Championship	11/12 (325-322-326—973)	Jennifer Bawanan - T22/235
FALL 2003			
Sept. 8-9	Ptarmigan Ram Fall Classic	7/16 (303-302-300—905)	Chelsey Pryor - T14/224
Sept. 20-21	Mary Fossum Invitational	4/16 (320-304-313—937)	Tiffany Woods - T15/232
Oct. 6-7	Shoot-out at the Legends	15/18 (315-311-304—930)	Jill Womble - T20/223
Oct. 13-14	Sunflower Invitational	4/12 (305-323-316—944)	Jill Womble - 8/234
Nov. 3-4	Edwin Watts/Palmetto Intercollegiate	11/18 (314-308-322—944)	Chelsey Pryor - T28/233
SPRING 2004			
March 1-2	Texas A&M "Mo"morial Invitational	T7/16 (302-302-312—916)	Amanda Costner - T2/221
March 15-16	Anteater Invitational	5/13 (322-301-303—926)	Amanda Costner - T11/227
March 21-23	Betsy Rawls Longhorn Invitational	15/18 (349-333-324—1,006)	Amanda Costner - T52/249
March 27-28	Mountain View Collegiate	7/17 (297-302-311—910)	Chelsey Pryor - T28/228
April 12-13	Susie Maxwell Berning Classic	7/15 (305-318-311—934)	Chelsey Pryor - T10/229
April 23-25	Big 12 Championship	8/12 (305-312-DNP—617)	Amanda Costner - T7/148
FALL 2004			
Sept. 13-15	Dick McGuire Invitational	13/17 (308-312-307—927)	Chelsey Pryor - T22/225
Sept. 24-26	Jeannie McHaney Invitational	13/18 (311-PPD-317—628)	Amanda Costner - T17/151
Oct. 4-5	Price's "Give Em' Five" Intercollegiate	5/18 (310-307-304—921)	Jill Womble - T15/228
Oct. 11-12	Sunflower Invitational	1/11 (311-319-316—946)	Tiffany Woods - T5/236
Oct. 17-19	Lady Razorback Invitational	9/19 (316-310-312—938)	Chelsey Pryor - T29/235
SPRING 2005			
Feb. 28-March 1	Texas A&M "Mo"morial Invitational	T14/15 (338-325-329—992)	Amanda Costner - T15/238
March 11-13	Betsy Rawls Invitational	16/17 (329-330-319—978)	Amanda Costner - T42/241
March 18-20	LSU/Cleveland Classic	15/18 (325-307-302—934)	Amanda Costner - T35/231
March 26-27	Mountain View Intercollegiate	9/15 (297-299-296—892)	Annie Giangrosso - T15/220
April 9-10	Lady Boilermaker Invitational	6/13 (302-305-305—912)	Amanda Costner - 1/217
April 22-24	Big 12 Championship	9/12 (311-331-310—952)	Chelsey Pryor - T26/235

KU WOMEN’S GOLF HISTORY

Date	Tournament	Result	Top KU Individual
FALL 2005			
Sept. 12-13	Ptarmigan Ram Fall Classic	6/18 (304-293-297—894)	Amanda Costner - 3/212
Oct. 3-4	ORU Shootout	2/17 (312-298-309—919)	Chelsey Pryor - 1/226
Oct. 10-11	Sunflower Invitational	6/12 (315-297-311—923)	Amanda Costner - 6/220
Oct. 16-18	Embassy Suites Invitational	8/16 (303-309-306—918)	Amanda Costner - 4/216
Nov. 4-6	The Derby Invitational	16/17 (317-319-311—947)	Chelsey Pryor - T16/225
SPRING 2006			
Feb. 20-21	Central District Invitational	7/14 (307-309-306—922)	Chelsey Pryor - T5/223
March 10-12	Texas A&M “Mo”morial	10/18 (321-328-322—971)	Amanda Costner - T11/231
March 17-19	Betsy Rawls Longhorn Invitational	13/15 (317-328-318—963)	Amanda Costner - T22/236
March 25-26	Mountain View Collegiate	1/15 (297-297-290—884)	Chelsey Pryor - 6/217
April 9-10	Susie Maxwell Berning Classic	T9/17 (310-303-310—923)	Amanda Costner - T6/222
April 17-19	Big 12 Championship	11/12 (316-318-321—955)	Amanda Costner - T14/231
FALL 2006			
Sept. 11-12	Ptarmigan Ram Fall Classic	9/17 (295-310-298—903)	Amanda Costner - T18/223
Sept. 18-19	Chip-N Club Invitational	3/14 (322-317-304—943)	Meghan Gockel - T4/231
Oct. 2-3	Sunflower Invitational	1/16 (304-306-307—917)	Emily Powers - 4/225
Oct. 16-18	Price’s “Give Em’ Five” Intercollegiate	14/17 (313-313-307—933)	Amanda Costner - T13/225
Oct. 27-29	The Derby Invitational	15/17 (327-309—636)	Amanda Costner - T39/156
SPRING 2007			
Feb. 5-6	Baja Invitational	T9/15 (322-317—639)	Amanda Costner - T32/158
Feb. 24-26	FSU Chrysler Challenge	7/10 (323-328-316—967)	Amanda Costner - T22/238
March 17-19	Betsy Rawls Longhorn Classic	11/15 (323-309-311—943)	Amanda Costner - 15/229
March 25-26	Mountain View Collegiate	T4/17 (297-291-286—874)	Emily Powers - T7/215
April 8-9	Susie Maxwell Berning Classic	4/18 (295-294-295—884)	Amanda Costner - T10/217
April 16-18	Big 12 Championship	9/12 (312-314-319—945)	Amanda Costner - 1/221
FALL 2007			
Sept. 10-11	Chip-N Club Invitational	5/19 (313-305-303—921)	Emily Powers - T10/224
Sept. 17-18	Ron Moore Intercollegiate	8/11 (309-308-294—911)	Emily Powers - T7/221
Oct. 1-2	Marilynn Smith Invitational	1/13 (302-298—600)	Camilla Svensson - T4/147
Oct. 15-17	Price’s “Give Em’ Five” Intercollegiate	T4/16 (302-302-304—908)	Emily Powers - T8/223
Oct. 26-28	UA-Ann Rhoads Intercollegiate	13/18 (317-312-297—926)	Emily Powers - T11/223
SPRING 2008			
Feb. 17-19	Qdoba Invitational	6/12 (307-314-300—921)	Grace Thiry - T7/224
Feb. 25-26	Kitahara Invitational	3/16 (295-301—596)	Emily Powers - T2/145
March 17-19	Betsy Rawls Invitational	13/17 (325-332—657)	Grace Thiry - T24/160
March 29-30	Mountain View Collegiate	11/18 (299-308-302—909)	Emily Powers - T7/220
April 6-8	Susie Maxwell Berning Classic	3/16 (304-300-294—898)	Emily Powers - T14/223
April 25-27	Big 12 Championship	10/12 (333-325-340—998)	Emily Powers - T29/247
FALL 2008			
Sept. 15-16	Chip-N Club Invitational	6/12 (306-306-304—916)	Grace Thiry - 10/223
Sept. 22-23	Marilynn Smith Sunflower Invitational	5/16 (318-308-308—934)	Emily Powers - 1/223
Sept. 29-30	Johnie Imes Invitational	5/18 (306-306-301—913)	Emily Powers - T6/221
Oct. 6-7	McHaney/Morehead Invitational	7/14 (313-316-314—943)	Emily Powers - T7/227
Oct. 24-26	The Derby	14/18 (311-306-314—931)	Meghna Bal - T12/224

KU WOMEN’S GOLF HISTORY

Date	Tournament	Result	Top KU Individual
SPRING 2009			
Feb. 16-17	Cenral District Invitational	T13/15 (318-308-320—946)	Emily Powers - T29/230
March 6-8	Duramed Collegiate Invitational	1/20 (294-295-294—883)	Meghan Gockel - 1/218
March 27-29	Liz Murphey Collegiate Classic	18/18 (327—327)	Emily Powers - T30/77
April 5-6	Susie Maxwell Berning Classic	4/15 (327-314-317—958)	Emily Powers - T11/237
April 18-19	Lady Buckeye Invitational	T9/15 (309-314-327—950)	Emily Powers - T33/235
April 24-26	Big 12 Championship	5/12 (312-310-323—945)	Meghan Gockel - T6/230
FALL 2009			
Sept. 15-16	Chip-N Club Invitational	3/14 (301-295-299—895)	Emily Powers - 2/213
Sept. 28-29	Marilynn Smith Sunflower Invitational	6/13 (324-325-305—954)	Emily Powers - T7/231
Oct. 5-6	Johnie Imes Invitational	10/18 (319-313-303—935)	Emily Powers - T24/235
Oct. 12-14	Price’s “Give Em’ Five” Intercollegiate	T7/18 (306-297-297—900)	Meghna Bal - T6/219
Oct. 26-27	Edwin Watts/Palmetto Intercollegiate	2/18 (306-295-294—895)	Emily Powers - T6/221
SPRING 2010			
Feb. 21-23	Edwin Watts/Kiawah Island Classic	T12/19 (303-314-298—915)	Emily Powers - T11/221
March 5-7	Duramed/Rio Verde Collegiate	5/19 (303-297-317—917)	Meghna Bal - T15/229
March 15-17	Northern Migration Invite	11/19 (299-308-322—929)	Meghna Bal - T29/231
April 2-4	Ole Miss Rebel Intercollegiate	9/20 (300-305-305—910)	Grace Thiry - T24/225
April 23-25	Big 12 Championship	12/12 (314-312-312—938)	Emily Powers - T28/231
FALL 2010			
Sept. 13-14	Chip-N Club Invitational	2/15 (300-299—599)	Meghna Bal - T4/148
Sept. 27-28	Marilynn Smith Sunflower Invitational	1/12 (313-290-300—903)	Grace Thiry - T4/148
Oct. 4-5	Johnie Imes Invitational	8/15 (306-302-303—911)	Grace Thiry - 1/219
Oct. 11-13	Price’s “Give ‘Em Five” Intercollegiate	9/14 (302-300-297—899)	Grace Thiry - T27/227
Oct. 25-26	Edwin Watts/Palmetto Intercollegiate	4/18 (296-296-295—887)	Katy Nugent - T22/224
SPRING 2011			
Feb. 13-14	Claud Jacobs Challenge	2/16 (301-311-308—920)	Meghna Bal - T3/227
Feb. 27-March 1	Louisville Cards Challenge	5/14 (312-305-296—913)	Katy Nugent - T7/222
March 25-26	Mountain View Collegiate	17/18 (307-309-297—913)	Thanuttra Boonraksasat - T45/225
April 1-3	Ole Miss Rebel Intercollegiate	9/18 (308-306-306—920)	Thanuttra Boonraksasat - T4/217
April 11-12	Baylor Spring Invitational	6/18 (312-317-296—925)	Meghan Potee - T15/228
April 22-24	Big 12 Championship	11/12 (302-305-304—911)	Thanuttra Boonraksasat - T23/224
FALL 2011			
Sept. 12-14	Dale McNamara Invitational	T11/15 (313-304-310—927)	Nadia Luttner - T19/224
Sept. 26-27	Marilynn Smith Sunflower Invitational	5/12 (307-301-313—921)	Thanuttra Boonraksasat - T4/221
Oct. 3-4	Johnie Imes Invitational	11/15 (313-302-307 —922)	Thanuttra Boonraksasat - T27/227
Oct. 16-18	Susie Maxwell Berning Classic	8/17 (302-301-308 —311)	Meghan Potee - T26/226
Oct. 23-24	Edwin Watts/Palmetto Intercollegiate	T9/17 (312-313-287—912)	Meghan Potee - T3/217
SPRING 2012			
Feb. 12-14	UCF Challenge	16/18 (306-302-309—917)	Katie Nugent - T38/224
Feb. 27-28	Sir Pizza Challenge	T9/14 (306-308-305—919)	Thanuttra Boonraksasat - 8/220
March 9-11	Rio Verde Collegiate Invitational	1/16 (312-297-291—900)	Katy Nugent - 2/220
March 23-24	MountainView Collegiate	14/15 (301-312-302—915)	Katy Nugent - T37/224
April 9-10	Knights and Pirates Invitational	15/15 (317-316-323—956)	Thanuttra Boonraksasat - 67/238
April 27-29	Big 12 Championship	10/10 (338-307-306—951)	Thanuttra Boonraksasat - T30/236
			Audrey Yowell - T30/236

KU WOMEN'S GOLF HISTORY

Date	Tournament	Result	Top KU Individual
FALL 2012			
Sept. 17-18	Dale McNamara Invitational	11/15 (295-303-312—910)	Thanuttra Boonraksasat - T24/ 223
Sept. 24-25	Marilynn Smith Sunflower Invitational	1/13 (303-298-305—906)	Thanuttra Boonraksasat - 2/221
Oct. 8-10	Price's "Give Em' Five" Intercollegiate	1/13 (294-289-288—871)	Yupaporn Kawinpakorn - 1/213
Oct. 15-17	Susie Maxwell Berning Classic	9/18 (297-303-307—907)	Meghan Potee - T24/226
Oct. 28-29	Edwin Watts/Palmetto Intercollegiate	7/17 (307-296-299—902)	Thanuttra Boonraksasat - T5/219
SPRING 2013			
Feb. 15-17	Florida State Matchup	10/12 (310-306-305—921)	Meghan Potee - T18/225
Feb. 25-26	Sir Pizza Terrapin Challenge	9/16 (292-305-321—918)	Yupaporn Kawinpakorn - T12/225
March 8-10	Notre Dame Clover Cup	11/16 (312-301-304—917)	Thanuttra Boonraksasat - T19/223
March 20	Jayhawk-Cornhusker Challenge	1/2 (317)	Meghan Potee - 1/76
March 25-26	Briar's Creek Invitational	8/18 (309-315-301—925)	Thanuttra Boonraksasat - T4/222
April 13-14	Indiana Invitational	2/15 (304-296-293—893)	Thanuttra Boonraksasat - 2/222
April 19-21	Big 12 Championship	8/9 (322-304-315—941)	Yupaporn Kawinpakorn - T10/229
FALL 2013			
Sept. 16-17	Cardinal Cup	2/13 (295-286-300—881)	Yupaporn Kawinpakorn - T2/213
Sept. 23-24	Marilynn Smith Invitational	1/15 (303-299-307—910)	Meghan Potee - 1/224
Sept. 30 - Oct. 1	Challenge at Onion Creek	4/11 (294-289-292—876)	Thanuttra Boonraksasat - 6/216
Oct. 12-13	Diane Thomason Invitational	2/12 (303-298-303—904)	Yupaporn Kawinpakorn - 2/223
Oct. 27-28	Palmetto Intercollegiate	1/19 (297-295-284—876)	Pornvipa Sakdee - T4/217
SPRING 2014			
Feb. 14-16	Florida State Matchup	9/11 (309-311-301—921)	Thanuttra Boonraksasat - T32/229
March 14-16	3M Lady Jaguar Intercollegiate	3/14 (316-294-300—910)	Pornvipa Sakdee - T8/225
March 24-25	2014 Briar's Creek Invitational	7/17 (308-301-294—903)	Yupaporn Kawinpakorn - T15/223
April 4-6	SMU Invitational	5/16 (306-299—605)	Yupaporn Kawinpakorn - T7/147
April 19-20	Lady Buckeye Invitational	5/12 (305-307-304—916)	Yupaporn Kawinpakorn - T6/227
			Thanuttra Boonraksasat - T6/227
April 25-27	Big 12 Championship	T4/9 (297-295-294—886)	Yupaporn Kawinpakorn - T2/211
May 8-10	NCAA Regional	T5/24 (309-290-200—899)	Minami Levonowich - T19/222
May 20-23	NCAA Championship	24/24 (313-293-303—292)	Yupaporn Kawinpakorn - T84/299
FALL 2014			
Sept. 8-9	Marilynn Smith Invitational	2/11 (296-294-310—900)	Pornvipa Sakdee - 1/216
Sept. 15-16	Minnesota Invitational	3/14 (302-303-300—905)	Gabriella Dimarco - T6/229
Sept. 21-23	Lady Paladin Invitational	T5/18 (289-298-305—892)	Yupaporn Kawinpakorn - T10/218
Oct. 10-12	Ron Moore Women's Intercollegiate	2/12 (289-296-299—884)	Yupaporn Kawinpakorn - 2/215
Oct. 26-28	Palmetto Intercollegiate	5/20 (288-303-306—897)	Yupaporn Kawinpakorn - 2/213