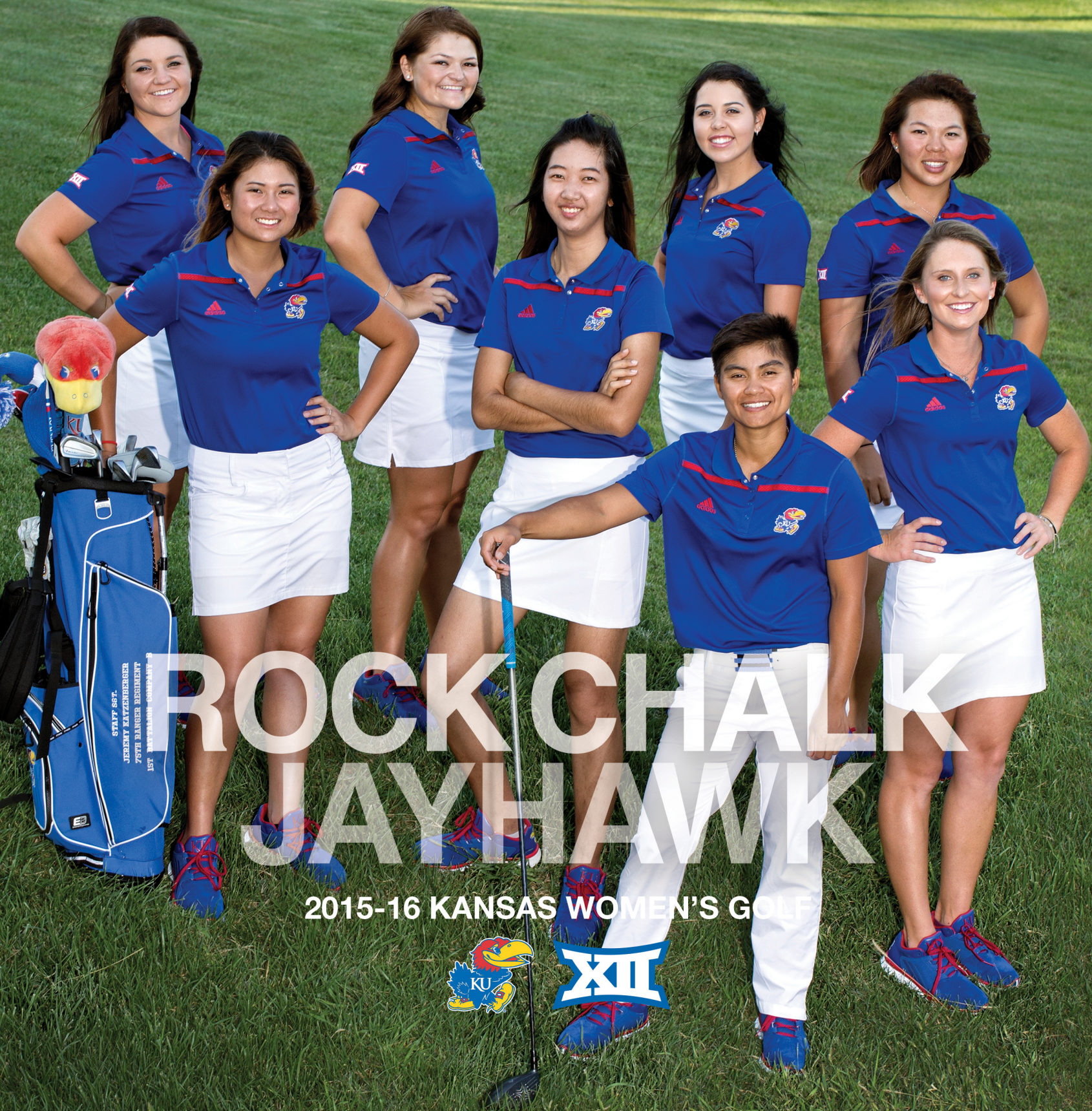


 /KANSASWOMENSGOLF

 @KUWOMENSGOLF

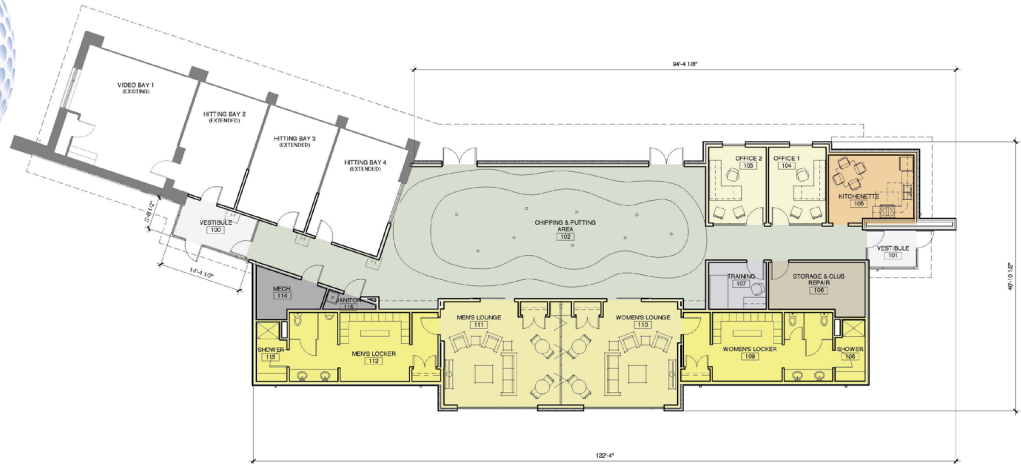
 KUWOMENSGOLF





GOLF PRACTICE FACILITY

Alvamar Golf Course, Lawrence, Kansas



BUILDING PROGRAM

Existing Building	Qty.
Hitting Bays	3
Video Bay	1
Subtotal:	1,102 sf
New Building	Qty.
Team Lounges	2
Locker Rooms (each)	1
Indoor Chipping Area	1
Indoor Putting Area	1
Coach's Offices	2
Kitchenette	1
Storage & Club Repair	1
Training Room	1
Building Mechanical	1
Subtotal:	3,988 sf
Total Square Footage	5,090 sf





MAJOR DAN ROONEY MEETING THE TEAM

CREDITS

CREDITS

The 2016 University of Kansas Women's Golf Media Guide was produced by the Kansas Communications office.

Editor:
James Saat

Guide Layout and Design:
Jackie Berra

Cover Design:
Jackie Berra

Editorial Assistance:
Erin Penning, Chris Theisen and Todd Kober

Photography:
Jeff and Laura Jacobsen

Additional Photos:
Doug Stremel, Jason Dailey, Harland J Schuste, KU Student Housing, KU Marketing Communications, Communications Archives, Lawrence Convention and Visitor's Bureau.



TABLE OF CONTENTS

INTRODUCTION

Quick Facts	2
Folds of Honor	3
Alvamar Golf Club	4
Jayhawks at 2014 Nationals	6

THIS IS KANSAS

Life as a Jayhawk	9
Student Support - KU Leads	10
Academic Support	11
Athletic Department Success	12
Facilities	14
The University of Kansas	16
Campus Living	18
Traditions	20
City of Lawrence	22
Kansas City	24
Famous Alumni	25
Jayhawks in the Community	26

MEET THE JAYHAWKS

Victoria Chandra	28
Laine Evans	29
Ariadna Fonseca Diaz	30
Kallie Gonzales	31
Yupaporn Kawinpakorn	32
Pornvipa Sakdee	34
Makenzie Sexe	35
Pitsinee Winyarat	36

THE COACHES

Head Coach Erin O'Neil	38
Assistant Coach Katy Nahm	40

THE ADMINISTRATION

Support Staff	42
Dr. Bernadette Gray-Little	43
Dr. Sheahon Zenger	44

RECORD BOOK

2014-15 Season	46
2014-15 Tournament Results	47
Marilynn Smith Sunflower Invitational	51
All-Time Letterwinners	52
Individual Records	53
Individual Honors	55
Team Records	56
NCAA Championship/Regional History	57
Conference Championship History	58
Year-by-Year Results (Since 1980)	59

The University of Kansas prohibits discrimination on the basis of race, color, ethnicity, religion, sex, national origin, age, ancestry, disability, status as a veteran, sexual orientation, marital status, parental status, gender identity, gender expression and genetic information in the University's programs and activities. The following person has been designated to handle inquiries regarding the non-discrimination policies: Director of the Office of Institutional Opportunity and Access, IOA@ku.edu, 1246 W. Campus Road, Room 153A, Lawrence, KS, 66045, (785) 864-6414, 711 TTY.

Quick Facts

Location	Lawrence, Kan.
School Founded	1866
Enrollment	27,983
Nickname	Jayhawks
Colors	Crimson (Pantone 186) and Blue (Pantone 293)
Chancellor	Dr. Bernadette Gray-Little (Marywood College, 1966)
Director of Athletics	Dr. Sheahon Zenger (Kansas State, 1988)

COACHING STAFF

Head Coach **Erin O'Neil**
 Alma Mater Georgia, 1997

Assistant Coach **Katy Nahm**
 Alma Mater Coastal Carolina, 2007

SUPPORT STAFF

Bill Cowgill..... Associate Dir. of Sports Medicine
 Debbie Van Saun..... Sr. Associate AD/SWA/Golf Admin.
 Glenn Cain Jr. Strength and Conditioning
 Stephanie Soash..... Administrative Assistant
 Aaron Carbuhn..... Sports Nutritionist
 Sheriece Sadberry Counseling & Sport Psychologist
 Glenn Quick..... Assoc. AD - Acad. & Career Counseling

COMMUNICATIONS

Primary Contact **James Saat**
 Office Phone 785.864.3417
 Cell Phone 908.752.2523
 Email james.saat@ku.edu

Sport Supervisor **Chris Theisen**
 Office Phone 785.864.3474
 Cell Phone 785.331.9356
 Email theisen@ku.edu

Office Manager **Erin Penning**
 Office Phone 785.864.3417
 Email epenning@ku.edu

Website **www.KUathletics.com**
Social Media **@KUWomensGolf**

2015-16 SCHEDULE

Date	Event	Location	Finish
September			
7-8	Marilynn Smith Invitational	Manhattan, Kan.	7/12 (922)
14-15	Minnesota Invitational	Minneapolis, Minn.	12/12 (943)
19-21	Schooner Fall Classic	Norman, Okla.	4/12 (566)
October			
5-6	Chip-N Club Invitational	Lincoln, Neb.	3/13 (893)
25-27	Palmetto Intercollegiate	Johns Island, S.C.	8/20 (898)
March			
14-15	Arizona Wildcat Invitational	Tuscon, Ariz.	
21-23	SDSU Farms Invitational	San Diego, Calif.	
April			
1-2	DAC/SMU Invitational	Dallas, Texas	
8-9	Texas Tech Invitational	Lubbock, Texas	
22-24	Big 12 Championship	San Antonio, Texas	
May			
5-7	NCAA Regionals	TBA	
20-25	NCAA Championships	Eugene, Ore.	

2015-16 ROSTER

Name	Class	Hometown/Previous School
Victoria Chandra	Freshman	Denpasar, Bali/CHIS HS
Laine Evans	Freshman	Wichita, Kan./Maize South HS
Ari Fonseca Diaz	Freshman	Caracas, Venezuela/Foundation Academy
Kallie Gonzales	Sophomore	Clovis, N.M./Montgomery HS
Yupaporn Kawinpakorn	Senior	Samuthprakan, Thailand/Praphamontree II School
Pornvipa Sakdee	Junior	Kampheang Phet, Thailand/Watchara Wittay School
Mackenzie Sexe	Sophomore	Savage, Minn./Prior Lake HS
Pitsinee Winyarat	Sophomore	Bangkok Thailand/Bromsgrove International School
Xinyun Yu	Freshman	Shanghai, China/ Shanghai Yan'an High School

Folds of Honor



DEDICATION TO STAFF SGT. KATZENBERGER



KAWINPAKORN AND THE KATZENBERGERS

Founded in 2007 by Major Dan Rooney, a former KU men's golfer and F-16 fighter pilot in the Oklahoma National Guard, the Folds of Honor has raised \$70 million for families of deceased or disabled veterans and expects to raise \$13 million more just this fall.

Each tournament, a Jayhawk will carry a specially-embroidered Folds of Honor golf bag. At the end of the year the bag will be auctioned off and the proceeds will benefit the Katzenberger family of Parkville, Missouri.

Staff Sargent Jeremy Katzenberger died serving his country in 2011 and is survived by his wife Colleen and son Everett. Through the Folds of Honor organization, Mrs. Katzenberger was able to receive a scholarship and pursue her goal of becoming a teacher.



FOLDS OF HONOR GOLF BAG



DAN ROONEY SPEAKS TO TEAM

Alvamar Golf Club



- THE CHAMPIONSHIP COURSE WAS NAMED ONE OF AMERICA'S TOP-75 PUBLIC COURSES BY GOLF DIGEST
- THE MEMBERS COURSE WAS INCLUDED IN THE "BEST IN STATE" RANKINGS BY THE KANSAS GOLF ASSOCIATION
- RANKED AMONG THE TOP 75 BEST PUBLIC COURSES BY USA TODAY

Alvamar Golf Club was opened for play May 15, 1968, with the two original nines, Jayhawk and Quail Creek, joined by the Hidden Valley nine in 1973. The Sunflower nine opened in 1978 and in 1982, the Hidden Valley and Sunflower nines became Alvamar Country Club.

Alvamar was named by developer and one time men's golf coach Bob Billings from the contraction of the names of his parents, Alva and Margaretta Billings of Russell, Kan. In all, Alvamar Golf Club and Country Club encompasses more than 3,000 acres of west Lawrence. The 36 holes at Alvamar were designed by Mel Anderson and Bob Dunning and include a public and private clubhouse, driving range and three practice greens. The two courses at Alvamar were the first in the United States

to utilize zoysia grass for its fairways and tees. The course currently uses cohansey bent green on both surfaces.

In 1991, Alvamar Country Club hosted the Kansas Amateur. Alvamar Golf Club annually hosts the Kansas Open and has been the site of the United States Golf Associations Women's Public Links tournament. It was the site of the Big Eight Conference Men's Championship for eight consecutive years, and in 1990, the Big Eight Conference Women's Championship was held at Alvamar and won by the Jayhawks. Alvamar Golf Club hosted the inaugural Big 12 Women's Championship in 1997 and has been the site of the KU men's Kansas Invitational and women's Marilynn Smith Sunflower Invitational.

Hole	1	2	3	4	5	6	7	8	9		10	11	12	13	14	15	16	17	18
Par	4	3	4	4	5	4	5	3	4		4	3	4	4	5	3	4	5	4
Men's Yardage	354	135	359	349	472	377	527	153	376		345	167	379	351	512	150	397	502	332
Ladies' Yardage	318	90	330	300	414	315	471	130	304		312	132	314	290	468	132	301	450	321

(Public - Private)

(Public - Private)



Having been honored as one of the “Best maintained golf courses in the United States” by Grounds Maintenance Magazine, Alvamar continues to improve its attractive golf venue. At Alvamar Golf Club, the Director of Golf is Eric Magnuson, while Paul Hooser serves as head professional at Alvamar Country Club.

Alvamar Country Club is considered one of the finest golf courses in the state. Alvamar’s reputation is one of the reasons KU attracts some of the top golfers in the country.

In addition to Alvamar’s public and private courses, golf options in Douglas County include Lawrence Country Club and Eagle Bend Golf Course. Furthermore, there are more than 20 golf courses within an hours’ drive of campus.



KNAPHEIDE FAMILY PRACTICE FACILITY

The Kansas women’s golf program added a new member to the Jayhawk family in 2008: the state-of-the-art Knapheide Family Practice Facility.

The practice facility includes four heated hitting bays to go along with cutting-edge swing technology.

The bays are part of a climate-controlled facility that allows the Kansas golfers to hit balls out into the driving range at Alvamar Golf Club.

The facility is equipped with three smaller bays in addition to the one larger bay. The larger bay features a V1 video system, along with a Trackman radar launch monitoring system.

Each smaller bay is equipped to provide two putting holes along with mirror technology that monitors the fundamentals of the golfers.

Five different golfers can use the radiant heated facility with three golfers in each of the small bays, along with two golfers utilizing the larger bay, at one time.



Hole	1	2	3	4	5	6	7	8	9	10	11	12	13	14	15	16	17	18
Par	4	5	4	3	4	4	3	5	4	4	5	3	4	4	3	4	5	4
Men's Yardage	392	505	380	182	381	405	210	471	389	386	496	168	430	387	183	358	538	375
Ladies' Yardage	360	468	339	157	359	370	171	441	354	351	459	130	389	351	160	321	496	336

Jayhawks at 2014 Nationals





National Presence

The Jayhawks have maintained a presence in the NAAs the past two years. An appearance by Kansas in the 2014 Central Regional marked the first time Kansas women's golf had competed in the NAAs as a team since 1990. After tying for fifth place at the NCAA Regional, KU moved on to the NCAA Championships for just the second time in program history.

In 2015, Yupaporn Kawinpakorn qualified for NCAA Regionals as an individual, joining Amanda Costner and Emily Powers as Jayhawks that have reached NCAA regional play as individuals during head coach Erin O'Neil's tenure.

An aerial photograph of a university campus during autumn. The scene features several large, multi-story academic buildings with light-colored facades and flat roofs. A prominent building with a grey roof is in the center. To the right, a tall, slender, grey tower rises above the surrounding trees. The campus is interspersed with green lawns and numerous trees displaying vibrant autumn foliage in shades of yellow, orange, and red. A winding road with parked cars is visible on the left. A blue semi-transparent rectangle is overlaid in the center of the image, containing the text "This is Kansas".

This is Kansas

Life as a Jayhawk

1



2

1. TRAVEL IN STYLE

The Kansas women's golf team travels in a luxurious Mercedes touring bus.

2. ADIDAS GEAR

Kansas student-athletes are decked out in top-of-the line adidas gear. The current women's golf attire is pictured here.

3. HALLOWEEN AT ALVAMAR

The golf team celebrates the end of the fall season with some Halloween fun at Alvamar.

3



Student Support - KU LEADS



1



2

1. FRESHMAN LEADERSHIP MENTOR

To develop committed leaders who represent the University of Kansas and its intercollegiate athletic programs with pride, integrity and intense competitive spirit.

2. EMERGENT LEADER RETREATS

Student-athletes, selected by their coaches, attend an overnight Jayhawk Leadership Retreat twice a year. They participate in activities, exercises and discussions designed to enhance leadership skills from a strengths-based perspective.



3



4

3. CAREER DEVELOPMENT

A career development progression; beginning with a career interest inventory, resume review, career coaching, mock interviews, utilizing KU Career Connections and Kansas Athletics' Career Fair.

4. JAYHAWKS AFTER COMPETITION

Kansas Athletics Career Services and K Club have teamed up to assist student-athletes who have exhausted athletic eligibility, but are finishing up academic responsibilities while transitioning into life after competition.



5



6

5. STUDENT-ATHLETE ADVISORY COMMITTEE

SAAC's mission is to enhance the total student-athlete experience, protect student-athlete welfare and promote a positive student-athlete image.

6. COMMUNITY SERVICE

Developing leaders off the field by fostering an environment in which the student athletes understand and value the benefits of giving back to their community.

2,500+

HOURS OF COMMUNITY
SERVICE COMPLETED TOTAL BY
KU STUDENT-ATHLETES IN THE
PAST YEAR



Academic Support



WOODS, HUMES AND DIMARCO

ACADEMICS

The Student-Athlete Support Services staff focuses all collective resources in support of the academic, personal and interpersonal development of each individual it serves. As part of its commitment to the academic success of its athletes, Kansas Athletics completed a new academic complex in the summer of 2009. The facility features individual study rooms, a computer lab and offices for all Student-Athlete Support Services personnel.

STRATEGIC AND INSTRUCTIONAL TUTORING PROGRAMS (STP)

- Tutoring is available to any student-athlete, regardless of scholarship status or sport.
- Many of the tutors working within STP are instructors or teaching assistants at KU. Some are undergraduate students who have excelled in their respective subject areas.
- Both programs offer individualized tutoring as well as small study groups.
- STP schedules nearly 2,000 tutoring sessions per week for more than 350 student-athletes working with tutors each week each semester.
- STP has more than 120 tutors who work with student-athletes who request tutoring assistance.

2,000

TUTORING SESSIONS
SCHEDULED PER WEEK FOR
MORE THAN 350 STUDENT-
ATHLETES

120+

TUTORS WHO WORK WITH
STUDENT-ATHLETES
WHO REQUEST TUTORING
ASSISTANCE

29

WGCA ALL- AMERICAN SCHOLARS IN
TEAM HISTORY, INCLUDING 24 UNDER
COACH ERIN O'NEIL

3.05

KANSAS WOMEN'S GOLF
GPA FOR THE 2015 SPRING
SEMESTER

67

ACADEMIC ALL- BIG 12
SELECTIONS, INCLUDING 42
UNDER COACH ERIN O'NEIL

27

TEAM TITLES, 12 UNDER
COACH ERIN O'NEIL

4

BIG 12 FIRST TEAM
ALL-CONFERENCE PLAYERS IN THE
ERIN O'NEIL ERA

Athletic Department Success

1. BASEBALL

Team: Five NCAA Tournament appearances, most recent in 2014

Ben Krauth: 2015 Big 12 Newcomer of the Year; **Connor McKay:** All-Big 12 First Team

2. MEN'S BASKETBALL

Team: Won unprecedented 11th-consecutive and NCAA-leading 58th overall conference regular-season title in 2014-15; Four Jayhawks named to the all-conference squad; Advanced to the NCAA Tournament for the 27th-straight season

Perry Ellis: All-Big 12 First Team; **Bill Self:** 2015 Associated Press Big 12 Coach of the Year

3. WOMEN'S BASKETBALL

Chelsea Gardner: Seventh Jayhawk to be drafted after being selected by the Indiana Fever as the 21st pick of the 2015 WNBA Draft; Two-time All-America Honorable Mention; WBCA All-Region; All-Big 12 First Team

4. FOOTBALL

Team: Three players were selected in the 2015 NFL Draft as **Ben Heeney** and **Dexter McDonald** were tabbed by the Oakland Raiders and **JaCorey Shepherd** was taken by the Philadelphia Eagles

5. MEN'S GOLF

Team: Won the Desert Shootout and posted seven top-five tournament finishes; Five Academic All-Big 12 selections

6. WOMEN'S GOLF

Team: In 2013-14, received its first-ever NCAA Regional bid and advanced to its second-ever NCAA Championship; A year later, the Jayhawks posted five top-five tournament finishes

Yupaporn Kawinpakorn: Broke her own KU single-season record for scoring average at 73.6

7. ROWING

Team: 18 Jayhawks on the 2015 Academic All-Big 12 Rowing Team; Fourth place at Big 12 Championship

Claudijah Lever: 2015 Marlene Mawson Exemplary Student-Athlete Award (first rower in school history to claim the accolade); 2015 All-Big 12 Rowing Team

8. SOCCER

Team: 2014 NCAA Tournament; Peak 2014 NCAA ranking: Ninth; Program record 8-0 start; Three All-Big 12 First Team honorees

Liana Salazar: Third Team All-American, First Team All-Big 12, First Team All-Region; **Caroline Van Slambrouck:** Academic All-America Second Team, First Team All-Big 12

9. SOFTBALL

Team: Second-consecutive NCAA Tournament appearance; In the national polls for seven weeks with highest ranking No. 22; Upset No. 5 Oklahoma, 4-2, in extra innings; Five All-Big 12 selections

Daniella Chavez: Big 12 Co-Freshman of the Year; All-Big 12 First Team; NFCA All-Region; Claimed KU's single-season RBI record with 67 runs batted in

10. SWIMMING & DIVING

Team: CSCAA Scholar All-America Team, having posted a 3.0 GPA or better in all 26 semesters (13 years) under Clark Campbell

Chelsie Miller: Earned All-America honors; Competed at the NCAA Championships for the second-consecutive year after finishing as runner-up in three events at the Big 12 Championships; Posted a second-place finish in the 400 IM at the 2014 USA Winter Nationals

11. TENNIS

Team: Nationally-ranked each of the last two seasons; Top-20 recruiting class

Maria Belen Luduena: Big 12 Player of the Week; **Smith Hinton:** Big 12 Player of the Week

12. MEN'S TRACK & FIELD

Michael Stigler: 2015 NCAA 400m Hurdles Champion, Four-time First Team All-American; four-time Big 12 Conference Champion; **Casey Bowen:** Two-time Big 12 Conference Pole Vault Champion

13. WOMEN'S TRACK & FIELD

Team: 2013 NCAA Outdoor National Champion

Sydney Conley: 2015 Big 12 Long Jump Champion; Three-time First Team All-American; **Lindsay Vollmer:** 2013 NCAA Heptathlon Champion; Four-time Big 12 Champion

14. VOLLEYBALL

Team: Three-straight NCAA Tournament appearances; No. 15 recruiting class in 2014; Six All-Big 12 honorees

Chelsea Albers: 2014 All-America Honorable Mention; **Ainise Havili:** 2014 All-America Honorable Mention; **Ray Bechard:** Named the Big 12 Coach of the Year in 2012 and 2013, Bechard reached the 1,000 career wins milestone in 2014



1



2



3



7



11



4



8



12



5



9



13



6



10

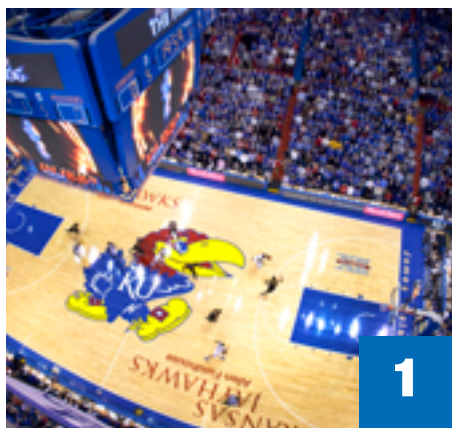


14

THIS IS KANSAS

Kw
Mj
Rb

Facilities



1



2



3



7



8



9

"THESE FACILITIES ARE CRITICALLY IMPORTANT TO MAINTAINING OUR COMPETITIVE EDGE."

SHEAHON ZENGER, DIRECTOR OF ATHLETICS, UNIVERSITY OF KANSAS

1. ALLEN FIELDHOUSE

Allen Fieldhouse is labeled by many as one of the best places in America to watch a college basketball game; Hosts approximately 35 home basketball games (men and women combined) each year; Largest basketball arena in the state of Kansas and the second largest in the Big 12 Conference

2. ANDERSON FAMILY FOOTBALL COMPLEX

Completed in July 2008, now the headquarters of Kansas Football; Adjacent to Memorial Stadium, the two-level building includes offices, academic areas, a weight room, locker rooms, an audio-visual room, meeting rooms, a cardio room, a hydro-therapy room, a nutrition area and a display area; The stand-alone, 80,000 square-foot facility is the state-of-the-art centerpiece of a \$33 million project, which also includes two practice fields and additional parking

3. ANDERSON STRENGTH CENTER

State-of-the-art weight room that helps KU compete with other universities for top student-athletes; \$8 million, 42,000-square-foot complex

4. ANSCHUTZ PAVILLION

Indoor practice facility for many Jayhawk teams; 40,000-square-foot multi-purpose building; Renovated in August of 2011 and features a new turf surface

5. ARROCHA BALLPARK AT ROCK CHALK PARK

Home of Kansas softball; 2015 was the first season at the current location, Arrocha Ballpark was originally located south of Allen Fieldhouse, but the name transferred to honor the \$2 million gift by Cheryl Womack in November 2002

6. ALVAMAR GOLF AND COUNTRY CLUB

Considered "home" to the University of Kansas men's and women's golf programs; With a state-of-the-art practice facility and 36 of the finest-kept golf holes in Kansas, the teams are able to challenge themselves on a daily basis; The Knapheide Family Practice Facility consists of four climate-controlled hitting bays with cutting-edge swing technology; Three smaller bays in addition to one larger bay, which is equipped with a V1 video swing analysis system and a Trackman radar launch monitoring system

7. HOGLUND BALLPARK

Home of the Jayhawk baseball program; The entire field is covered in turf, with a different color and grade on the basepaths, at home plate and on the warning track

8. HOREJSI FAMILY ATHLETICS CENTER

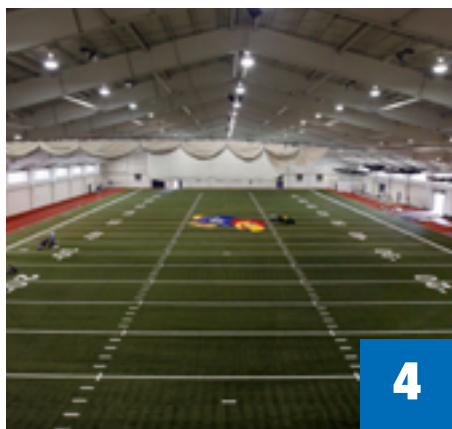
Home of Kansas volleyball since 1999; One of five volleyball-only facilities in the Big 12 Conference, the HFAC also houses a locker room and separate team room for pregame meetings and downtime between classes

9. KU SOCCER COMPLEX AT ROCK CHALK PARK

Home of Kansas soccer; Opened in October 2014, this dedicated facility features a berm surrounding the playing surface and seats over 2,300 fans; Hosted the 2014 NCAA Tournament First Round

10. JAYHAWK TENNIS CENTER

Indoor and outdoor home of Kansas Jayhawks tennis; A full-service facility with a slate of programming for all ages



4



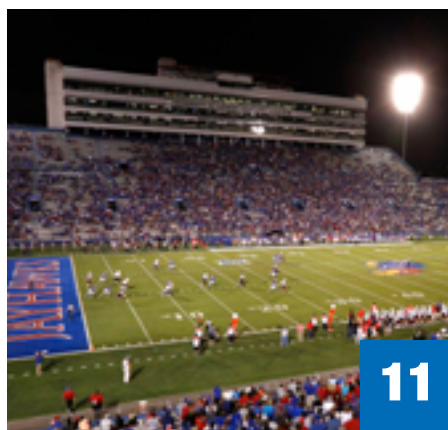
5



6



10



11



12



13



14



15

11. KIVISTO FIELD AT MEMORIAL STADIUM

Recognized as the first stadium built on a college campus west of the Mississippi River, Memorial Stadium is the seventh-oldest collegiate stadium in the nation, as it opened in 1921; Located at the north base of Mt. Oread at 11th and Maine streets in Lawrence, it has a capacity of 50,071; In recent years, the stadium complex has been the focus of major renovations with more than \$30 million in improvements completed

12. RIM ROCK FARM

Located northwest of Lawrence; Has been the home of the Jayhawks since the 1974 season; Hosted the 2014 Big 12 Conference Cross Country Championships; 2015 NCAA Midwest Regional Site Host

13. ROBINSON NATATORIUM

Home of Kansas swimming and diving for more than 40 years; Current structure features a 25-meter, eight-lane competition pool, a 25-yard, six-lane pool and a diving well

14. ROWING BOATHOUSE

Home of Kansas rowing since 2009; Sits near the Kansas River in Lawrence's Burcham Park; 14,000 square foot facility was dedicated on February 28, 2009

15. KU TRACK COMPLEX AT ROCK CHALK PARK

Home of Kansas track & field; 87th annual Kansas Relays were the first meet to be held at the new facility in April 2014; Recognized by the International Association of Athletics Federations (IAAF) as the fifth Class I Certified track on United States soil and one of only 105 in the entire world; Will host its first NCAA West Preliminary May 26-28, 2016

The University of Kansas

The University of Kansas is a premier research institution with a mission to educate leaders, build healthy communities and make discoveries that change the world. The university has more than 40 nationally ranked academic programs and is home to major centers overseeing research in life span issues, the humanities, the environment, biodiversity, and polar ice sheets. KU also has nationally designated cancer and Alzheimer's centers and the state's only schools of medicine and pharmacy, which are vital to training healthcare providers for the state's underserved communities. In addition to making discoveries that change the world, KU research grows the Kansas economy. Last year, KU conducted \$238.8 million in externally funded research, which is new money that flows into Kansas as a result of our research. There are 28 active startup companies based on KU technologies, and nearly a dozen out-of-state companies have relocated to Kansas to partner with KU researchers since 2010.



27,983

TOTAL ENROLLMENT,
HIGHEST AMONG ALL
KANSAS UNIVERSITIES

44

GRADUATE PROGRAMS RANKED
BY *U.S. NEWS & WORLD REPORT*

26

RHODES SCHOLARS,
MORE THAN ALL OTHER
KANSAS UNIVERSITIES COMBINED

#1

RANKING AMONG ALL KANSAS PUBLIC
UNIVERSITIES IN SCHOLARSHIP
FUNDS, GRADUATION RATE, RESEARCH
EXPENDITURES



THIS IS KANSAS

28

ACTIVE COMPANIES BASED
ON KU RESEARCH OR
TECHNOLOGIES



#1

NATIONAL PUBLIC UNIVERSITY
RANKING IN CITY MANAGEMENT &
URBAN POLICY, SPECIAL EDUCATION

Campus Living



2009

JAYHAWKER TOWERS
RENOVATION BEGAN

800

MEN & WOMEN STUDENT
RESIDENTS

14

MILLIONS SPENT ON
RENOVATIONS SINCE 2009



1. JAYHAWKER TOWERS

KU student-athletes have the opportunity to live in fully-furnished Jayhawker Towers apartments, conveniently located near Allen Fieldhouse, Burge Union and Wagnon Student-Athlete Center. The Towers are equipped with queen size beds and separate living quarters.

2. APARTMENTS

All apartments are two-bedroom and are shared by two residents. Apartments have wireless internet, are cable-ready, carpeted and fully-furnished with beds, desks, chairs, a living room set and window blinds. A small kitchen is provided in each apartment.

3. BURGE UNION

Jayhawk student-athletes often dine at the Burge Union, located adjacent to Allen Fieldhouse, Wagnon Student-Athlete Center and Jayhawker Towers. The Burge Union features a wide variety of food options and also houses the training table for KU student-athletes, which serves breakfast and dinner.

4. OTHER AMENITIES

Greater privacy and independence
On-site staff
Information desk
Academic Resource Center
KU card-operated laundry
WiFi

6

FLOORS + BASEMENT EACH
IN TOWERS A, B, C & D

.7

MILES TO THE
CAMPANILE

Kwg

Ks

Mj

Rb

Traditions



"YOU COME TO KU FOR
THE TRADITION, AND YOU
LEAVE A PART OF IT."

DANNY MANNING





4



5



6

1. THE NICKNAME: JAYHAWK

The University of Kansas is the home of the Jayhawk, a mythical bird with a fascinating history. Its origin is rooted in the historic struggles of Kansas settlers. The term "Jayhawk" was probably coined about 1848. Accounts of its use appeared from Illinois to Texas. The name combines two birds - the blue jay, a noisy, quarrelsome thing known to rob other nests, and the sparrow hawk, a stealthy hunter.

2. THE ALMA MATER

In 1891, professor George Barlow Penny searched for a school song for the Glee and Mandolin Club to sing on its tour through Kansas to Denver and back. No one responded with an original song in answer to his appeals. Just before departure, he thought of the Cornell song "Far Above Cayuga's Waters." Hastily changing a few words, he gave it to the glee club men to sing on the trip. He did not expect the song to be used after their return, but "Crimson and the Blue" still goes on. The music is not Cornell's but an old English folk tune, "Annie Lisle."

3. CAMPANILE HILL

Campanile Hill forms the picturesque backdrop for Memorial Stadium. On a sunny fall Saturday, the "Hill" is transformed into a congregating place for watching Jayhawk football, sunning and barbecuing. Potter Lake, just to the southwest of Memorial Stadium and at the bottom of Campanile Hill, adds to the beauty of the Kansas campus.

4. THE K RING

The K Ring symbolizes a uniquely shared experience between generations of varsity letter winners at the University of Kansas. As a Jayhawk you are expected to uphold tradition and retain the characteristics of a champion while continuing the create your own legacy.

5. WAVING THE WHEAT

Since the early days of KU sports, it has been a ritual of Jayhawk fans to "wave the wheat" following every Kansas scoring drive in football. The tradition also extends to Allen Fieldhouse where fans "wave the wheat" when an opponent fouls out and at the conclusion of every Jayhawk victory. The ritual consists of fans waving their arms in the air, an activity which, when done by a large crowd, resembles a breezy Kansas wheat field.

6. THE ROCK CHALK CHANT

The Rock Chalk Chant has been the battle cry of KU fans for more than 80 years. This strange, traditional chant, which is among the most famous of all college cheers, was started by E.H.S. Bailey, a professor of chemistry. On May 21, 1886, Bailey submitted the cheer to his club.

"GIVE THE WORLD THE BEST YOU'VE GOT AND THE
BEST WILL COME BACK TO YOU."

PHOG ALLEN

Kwq

Ks

Mj

Rb

City of Lawrence

Named one of the “best lil’ college towns” in the country by *Rolling Stone* magazine and a “slam dunk college town” by *National Geographic*, Lawrence is home to a diverse and progressive population of over 90 thousand citizens who are proud to provide a home for The University of Kansas and the Jayhawks.

ONE OF “THE
COUNTRY’S MOST
BIKE-FRIENDLY
TOWNS”

THE LEAGUE OF
AMERICAN CYCLISTS

THE 9TH-SMARTEST
CITY IN AMERICA

LUMOSITY

THE 7TH-BEST
CITY FOR
COLLEGE GRADS

AMERICAN INSTITUTE FOR
ECONOMIC RESEARCH

ONE OF THE TOP 20
“COOLEST” TOWNS
IN AMERICA

DISCOVERAMERICA.COM

TOP 15 IN
“THE 100 BEST
SMALL ARTS TOWNS
IN AMERICA”

JOHN VILLANI, AUTHOR

“NAMED ONE OF
THE NINE ‘HIGHEST
ACHIEVERS’ IN THE
WORLD OF SPORTS”

SPORTS TRAVEL



1,000

UNIQUE SHOPPING &
DINING OPTIONS
DOWNTOWN

75

LOCALLY OWNED
BOUTIQUES & GALLERIES

50

CITY PARKS



1



2



3



4



5

1. DOWNTOWN

Less than a mile from campus, downtown Lawrence provides a uniquely historic yet modern setting with world-class restaurants, dynamic arts and energetic nightlife.

2. MUSIC

Take a short walk on downtown's main thoroughfare, Massachusetts Street, and you'll be in the midst of what *The New York Times* called "the most vital music scene between Chicago and Denver."

3. SHOPPING

Iowa Street and 31st Street: Big box stores like Best Buy, Target, Walmart and others can all be found at this intersection in southwest Lawrence. Downtown: Trendy fashion, vintage bookstores and completely unique record stores.

4. DINING

Steaks, seafood, Mexican, Greek, Italian, Spanish, Chinese, sushi, gourmet burgers, fish & chips, Thai, barbecue, vegetarian — you name it — Lawrence has it!

5. OUTDOORS

The outdoor aquatic center downtown, Clinton State Park to the west and South Park on the east side provide a wide variety of opportunities for outdoor activities.



Kansas City

Located 25 miles to the east of Lawrence is the Kansas City metro area. Home to the fourth-busiest live entertainment venue in the country (Sprint Center), and some of the fastest internet speeds in the world (Google Fiber), the city known as the "Paris of the Plains" is a modern metropolis in the midst of a downtown revitalization.



1



2



3



4



5



6

1. CULTURE

Citing the Nelson Atkins, Kemper, and Nerman art museums as proof, Kansas City was selected by *Travel & Leisure* magazine as the fourth-most cultured city in America in April 2015.

2. TECHNOLOGY

Thanks to a \$15 million investment in infrastructure, Kansas City is set to become the largest "Smart City" in North America. The "Smart City" network is expected to use a public Wi-Fi system that would also be available to residents and visitors for free.

3. SPORTS

The metro area is home to the Kansas City Chiefs, Sporting KC, FC Kansas City, and the 2014 American League Champions and 2015 World Champion Kansas City Royals.

79,000

NUMBER OF SEATS IN
ARROWHEAD STADIUM,
HOME OF THE CHIEFS
FOOTBALL TEAM

4. ARTS & ENTERTAINMENT

Opened in 2007, the \$276 million Sprint Center arena is located in Kansas City's Power & Light District, a nine block entertainment district with shopping, restaurants, a movie theatre and arts venues.

5. CUISINE

Famous for a dish called "Burnt Ends" many agree that Kansas City is home to the best barbeque in the world. KC original Joe's Kansas City was named the "manliest restaurant" in America by *Men's Health* magazine. (November 2012).

6. SHOPPING:

The Country Club Plaza is Kansas City's outdoor, upscale shopping district. Over 180 shops and dozens of restaurants ranging from five-star to laidback reside amidst the Spanish-inspired architecture.

90+

BBQ JOINTS SMOKING IN
THE KC METRO AREA

Famous Alumni



1. **FORREST C. "PHOG" ALLEN (1885-1974)**
"Father of Basketball Coaching"; KU coach (1919-56, national championships 1921, 1922, 1952); Creator of NCAA basketball tournament; Coached by James Naismith at KU

2. **MARIO CHALMERS**
NBA player with the Miami Heat; Two-time World Champion

3. **WILT CHAMBERLAIN (1936-99)**
NBA superstar (1959-73) for the Philadelphia/San Francisco Warriors, Philadelphia 76ers, Los Angeles Lakers

4. **BOB DOLE**
Kansas senator (1966-96), U.S. Senate majority leader; Presidential and vice-presidential nominee

5. **NANCY LONDON KASSEBAUM**
First female U.S. senator (1979-97) elected in own right

6. **BILLY MILLS**
Only American athlete to win the Olympic gold medal in the 10,000 meters (1964)

7. **BRIAN MCCLENDON**
Google Earth vice president for geo-products; Made Lawrence and KU the center of Google Earth

8. **MANDY PATINKIN**
Actor and singer ("The Princess Bride"; TV's "Chicago Hope," "Criminal Minds," "Homeland")

9. **PAUL PIERCE**
NBA player with the Los Angeles Clippers, World Champion with the Boston Celtics; 2008 NBA Finals MVP

10. **ROB RIGGLE**
Comedian, actor ("The Hangover," "The Other Guys," "Step Brothers," TV's "Saturday Night Live" and "The Daily Show")

11. **PAUL RUDD**
Actor ("Clueless," "Ant-Man," "Knocked Up," TV's "Friends")

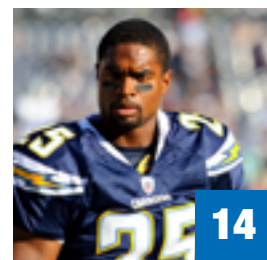
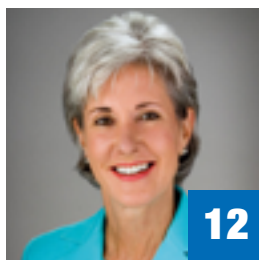
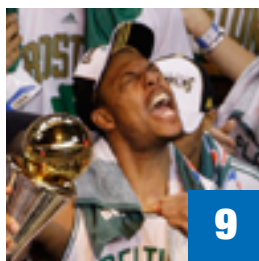
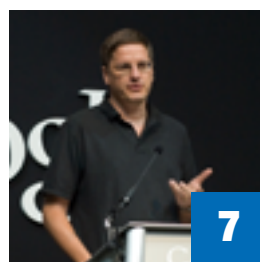
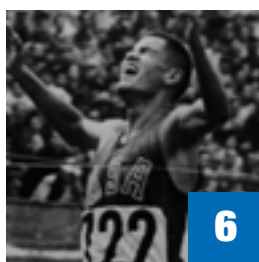
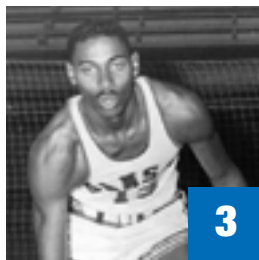
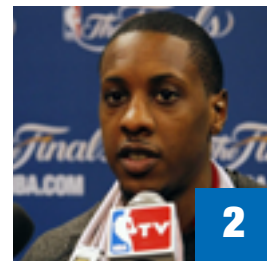
12. **KATHLEEN SEBELIUS**
U.S. Secretary of Health & Human Services 2009-14, Governor of Kansas 2003-09

13. **GALE SAYERS**
Football running back (Chicago Bears 1965-71); Member NFL Hall of Fame

14. **DARRELL STUCKEY**
NFL defensive back who is entering his sixth season in the league all, with the San Diego Chargers; Four-time team captain; Earned his first Pro Bowl invitation in 2015

15. **JEN WIDERSTROM**
Former student-athlete on both the Kansas rowing and track & field teams who has turned her personal training career into stardom; Enters her second season on the reality TV show "The Biggest Loser"

16. **LYNETTE WOODARD**
Major college women's basketball career scoring leader; Olympic gold medalist (1984); First female member of the Harlem Globetrotters



Jayhawks in the Community

1



1. LCC INSTRUCTION

Yupaporn Kawinpakorn tutors a Lawrence boy on his technique.

2. LCC INSTRUCTION

The women's golf team spent a day giving instruction to young aspiring golfers at the Lawrence Country Club.

3. FOLDS OF HONOR

The team supports the Katzenbergers of Parkville, Missouri through the Folds of Honor organization. Kawinpakorn is pictured here decorating a pumpkin with Colleen and Everett Katzenberger.



3





Meet the Jayhawk





VICTORIA CHANDRA

Freshman
Denpasar, Bali
CHIS High School



PERSONAL

Born in Surabaya, Indonesia... Nickname is "Vicky"... Parents are Rudy Chandra and Rita Hartono... Has three older siblings: William, Stephanie and Edward... Plans to study business.

Championships... Finished eighth at the 2013 Thailand Amateur Open... Finished 11th at the 2013 Southeast Asian (SEA) Games... Finished 12th at the True Vision International Junior Golf Championships.

AS A FRESHMAN (FALL 2015)

Competed in three events during the 2015 fall season... Tied for 55th at the Marilyn Smith Sunflower Invitational (Sept. 7-8)... Shot a career-best 54-hole score of 233 to tie for 32nd, her career-best finish, at the Chip-N Club Invitational (Oct. 5-6)... Averaged 80.5 strokes per round.

HIGH SCHOOL

Finished tied for 22nd at the 2014 Callaway Junior World Golf Championships... Placed tied for 18th at the 2014 Future Champions Golf (FCG) International Championship... Runner-up at the 2013 Optimist International Junior

CHANDRA AT KANSAS

Tournament	Score	Place
Fall 2015		
Chip-N Club Invitational	79-73-81--233	T32nd
Minnesota Invitational	DQ-79-88--167	67th
Marilynn Smith Sunflower Invitational	77-84-83--244	T55th

Year	Events	Rounds	Strokes	Low-High	Average	Wins	T-5	T-10	T-20	in 60's	Low-54	Top Finish
15-16	3	8	644	73-88	80.5	0	0	0	0	0	233	T32nd
Total	3	8	644	73-88	80.5	0	0	0	0	0	233	T32nd



LAINE EVANS
Freshman
Wichita, Kan.
Maize South High School

CAREER HONORS

2012-14 All-State Honoree... National Honor Society member.

PERSONAL

Full name is Laine Rylie Evans... Born in Summerville, South Carolina... Has called Wichita, Kansas home for the past 15 years... Parents are Bart and Toni Evans... Has an older sister named Kacie... Father played football for Fort Hays State University... Grandfather, James Ellis Evans, played in the NFL for the Dallas Cowboys and the New York Jets... Majoring in health and physical education.

AS A FRESHMAN (FALL 2015)

Competed in all five events in the fall... Debuted with a top-20 finish at the Marilyn Smith Sunflower Invitational (Sept. 7-8) and a career-best 226... Recorded a career-best 18-hole score of 72 at the par-71 Schooner Classic (Sept. 19-



21)... Tied for 40th at the Chip-N Club Invitational (Oct. 5-6) after carding a 235... Shot a 228 to tie for 45th at the Palmetto Intercollegiate... Averaged 76.79 strokes per round.

HIGH SCHOOL

Four-time letter winner at Maize South High School in Wichita, Kansas... Coached by Steve Martling... Two-time academic letterwinner... 2012-14 All-State Honoree... National Honor Society member... Set school girls golf records for most wins and lowest score posted at Maize South... Recorded a single best tournament round of 66... 2014 Kansas Junior Girl's State Champion... 2014 & 2015 Kansas Big "I" Trusted Choice Champion... Finished 33rd in the 2014 Optimist International Junior Golf Championship... 2013 and 2014 Individual AVCTL Division II League Champion... 2013 and 2014 Individual AVCTL Division II Regional Champion... Finished second in 2013

Kansas 5A State Championship... Member of the 2014 Regional Championship team.

EVANS AT KANSAS

Tournament	Score	Place
Fall 2015		
Palmetto Intercollegiate	74-77-77--228	T45th
Chip-N Club Invitational	77-78-80--235	T40th
Schooner Classic	77-72--149	T39th
Minnesota Invitational	77-78-82--237	T56th
Marilynn Smith Sunflower Invitational	78-73-75--226	T20th

Year	Events	Rounds	Strokes	Low-High	Average	Wins	T-5	T-10	T-20	in 60's	Low-54	Top Finish
15-16	5	14	1,075	72-82	76.79	--	--	--	1	--	226	
Total	5	14	1,075	72-82	76.79	--	--	--	1	--	226	



ARIADNA FONSECA DIAZ

Freshman
Caracas, Venezuela
Foundation Academy



PERSONAL

Full name is Ariadna Fonseca Diaz... Nickname is "Ari"... Born in Bogota, Columbia, but raised in Venezuela. Came to the U.S. in 2013... Parents are Pedro Fonseca and Myriam Diaz... Has a younger brother, Pedro Fonseca... Plans to major in business.

AS A FRESHMAN (FALL 2015)

Competed in all five fall events... Tied for 24th at the Marilyn Smith Sunflower Invitational (Sept. 7-8) after carding a 230 (+14)... Finished in the top-10 twice... Tied for sixth at the Chip-N Club Invitational (Oct. 5-6) after shooting a career-best 54-hole score of 218 (+2)... Shot under 70 in both rounds of the Schooner Classic (Sept. 19-21) en route to tying for a career-best fourth place... Averaged 74.79 strokes per round... Shot three rounds in the 60s.

HIGH SCHOOL

Attended Foundation Academy in Winter Garden, Fla... Trained at Westwood Golf Academy in Orlando, Florida during her junior and senior years... Career-best round of 66 (-6)... Recorded back-to-back runner-up finishes at the 2014 and 2015 Optimist International Junior Golf Championship... Competed for Venezuela at the 2015 Pan American Games in Toronto, finishing tied for 16th after shooting a 307 (+19) over four rounds... Top-20 finishes in the Polo Golf Junior Classic and the Callaway Junior Golf World Championships in 2014... In 2015 tied for fourth place at the Future Collegians World Tour at Mission Inn... Finished third at FCWT at Metro West... Tied for second at the 2015 Hurricane Junior Golf Tour Space Coast Junior Classic... Tied for second at the Florida Junior Tour Major... Won the 2015 HJGT Orange Lake Junior Open... Placed 10th at the 2015 South American Junior Championships in Chile.

FONSECA DIAZ AT KANSAS

Tournament	Score	Place
Fall 2015		
Palmetto Intercollegiate	75-77-75--227	T38th
Chip-N Club Invitational	75-75-68--218	T6th
Schooner Classic	69-68--137	T4th
Minnesota Invitational	77-80-78--235	T49th
Marilynn Smith Sunflower Invitational	77-76-77--230	T24th

Year	Events	Rounds	Strokes	Low-High	Average	Wins	T-5	T-10	T-20	in 60's	Low-54	Top Finish
15-16	5	14	1,047	68-80	74.79	--	2	2	2	3	218	T4th
Total	5	14	1,047	68-80	74.79	--	2	2	2	3	218	T4th

**KALLIE GONZALES**

Sophomore
Montgomery, Texas
Montgomery High School

**PERSONAL**

Full name is Kallie Hannah Gonzales... Born in Clovis, New Mexico... Has lived in Texas for 14 years... Parents are Johnny and Kris Gonzales... Has one sister, Keslie, one brother, Jonathan, and one sister-in-law, Jeannine... Named Academic All-State First Team for the Texas Girls Coaches Association in 2014... Father played college soccer at Hardin Simmons University... Brother, Jonathan, played soccer at Hartwick University in New York and club soccer at Texas A&M... Cousin, Trevor Gonzales, played soccer at Notre Dame... Has two cats, Rory and Irish... Plans to study chemical engineering.

AS A SOPHOMORE (FALL 2015)

Competed in three events in the fall... Recorded a career-best finish and 54-hole score at the Chip-N Club Invitational (Oct. 5-6) by tying for 29th and shooting a 235... Averaged 80.36 strokes per round.

AS A FRESHMAN (2014-15)

Competed in three team events for the Jayhawks and three individual events... Best finish was a tie for 12th at the Kansas-Tulsa Dual in Owasso, Oklahoma (Feb. 8)... Shot a career-low of 73 in the second round of the Kansas City Shootout (April 6-7)... Also competed in the Marilyn Smith Sunflower Invitational (Sept. 8-9), Minnesota Invitational (Sept. 15-16), Arizona Wildcat (March 16-17) and SDSU Farms Invitational (March 23-25).

HIGH SCHOOL

Played for Coach Rusty Herridge at Montgomery High School in Montgomery, Texas... Comes from a strong high school program where she lettered in golf all four years... Won MVP of the team in 2012 and 2013... Match play champion (2012, 2013 and 2014)... Helped Montgomery HS win District and Regional titles 2011-14... Montgomery was the 4A state champion team in 2011 and 2012 and

runner-up in 2013 and 2014... Second-Team All-State selection in 2012 and 2013... Captain of the team in 2012, 2013 and 2014... First-Team All-District honoree in 2012, 2013 and 2014... All-Greater Houston High School Golf Team in 2012 and 2013... First Team High School Golf Scoreboard (HSGSB) in 2012 and 2013... Recorded three top-10 finishes in American Junior Golf Association events.

CONZALES AT KANSAS

Tournament	Score	Place
Fall 2015		
Palmetto Intercollegiate	81-84-82--247	T95th
Chip-N Club Invitational	76-77-78--235	T29th
Marilynn Smith Sunflower Invitational	86-76-85--247	58th
Spring 2015		
Kansas City Shootout	81-73-81--235	T36th
SDSU Farms Invitational	0-4 (L-L-L-L)	--
Arizona Wildcat Invitational	84-81-80--245	82nd
Kansas-Tulsa Dual	82	T12th
Fall 2014		
Palmetto Intercollegiate	81-84-82--247	T95th
Minnesota Invitational	80-78-85--243	T67th
Marilynn Smith Sunflower Invitational	79-76-83--238	T35th

Year	Events	Rounds	Strokes	Low-High	Average	Wins	T-5	T-10	T-20	in 60's	Low-54	Top Finish
14-15	5	13	1,043	73-85	80.2	--	--	--	--	--	238	T35th
15-16	3	9	725	76-86	80.56	--	--	--	--	--	233	T29th
Total	8	22	1,768	73-86	80.36	--	--	--	--	--	233	T29th

Kwq

Ks

Mj

Rb



YUPAPORN KAWINPAKORN

Senior
Samutprakan, Thailand
Praphamontree II School

CAREER HONORS

2015-16: September Big 12 Golfer of the Month. **2014-15:** Athletic Director's Honor Roll and Big 12 Commissioner's Honor Roll (fall 2014, spring 2015)... Women's Golf Coaches Association All-Region Team... Big 12 All-Tournament Team... Academic All-Big 12 First Team... October Big 12 Golfer of the Month. **2013-14:** All-Big 12 Conference Team... Big 12 All-Tournament Team... Academic All-Big 12 First Team... Athletic Director's & Big 12 Commissioner's Honor Rolls (fall 2013, spring 2014). **2012-13:** Big 12 All-Tournament Team... Athletic Director's & Big 12 Commissioner's Honor Rolls (fall 2012, spring 2013).

PERSONAL

Full name is Yupaporn Kawinpakorn... Nickname is "Mook"... Born in Samutprakan, Thailand... Parents are Tiradech and Apicha Kawinpakorn... Has a younger brother named Burapa and a younger sister named Wiliporn... Shot a career-low 66 in 2006 in the Philippines... Participated for the Thai National Team at the Sea Games winning a team gold medal in 2007 and a silver medal (team and individual) in 2009... Won the 2008 Malaysia Amateur... In 2010 won the Thailand Amateur Ladies Open and Thailand Amateur Stroke Play individual titles... Majoring in sport management.

AS A SENIOR (FALL 2015)

Competed in all five fall events... Finished in the top-10 in all her events... Carded a 218 to tie for seventh at the Marilyn Smith Sunflower Invitational (Sept. 7-8)... Tied for 10th at the Minnesota Invitational (Sept. 14-15) after shooting a 223... Set a school record for a 18-hole score and tournament record for 18-hole-versus-par in the first round of the Schooner Classic (Sept. 19-21) en route to an individual title... Recorded a 212 to win her second-straight individual title at the Chip-N Club Invitational (Oct. 5-6)... Shot a 213 to capture a third-straight title at the Palmetto Intercollegiate (Oct. 25-27), the only Jayhawk to win three straight other than Holly Reynolds in 1992-93... Shot in the 60s three times... Set the KU record for career top-10 finishes with her victory at the Schooner Classic... Also set the KU record for career top-five finishes with her victory at the Palmetto Intercollegiate... Averaged 71.21 strokes per round.



AS A JUNIOR (2014-15)

Competed in 12 events, including the NCAA Regionals in San Antonio (May 7-9) as an individual... Recorded six top-five finishes... Earned her third-straight Big-12 All-Tournament Team honor by placing tied for fifth at the Big 12 Championship in San Antonio (April 24-26) after shooting 217 (73-69-75)... Tied for first at the SMU/DAC Invitational in Dallas (April 10-11) with a 215 (76-70-69)... Finished second at the Ron Moore Women's Intercollegiate in Highlands Ranch, Colorado (Oct. 10-12) with a 215 (71-72-72)... Recorded season-best 213 at the Palmetto Intercollegiate in Kiawah Island, South Carolina en route to a second place finish and at the NCAA Regionals to place tied for 10th... Placed fourth at the Kansas-Tulsa Dual in Owasso, Oklahoma (Feb. 8) with a score of 74... Finished tied for fifth in the Marilyn Smith Invitational in Lawrence (Sept. 24-25) with a 223 (73-73-77)... Shot a career-best single round score of 67 in the first round of the NCAA Regionals... Broke her own KU single-season record for averages strokes per round with 73.35... First Jayhawk to make a repeat trip to the NCAA Regionals in Kansas history... Led the team with six rounds in the 60s... Shot a team-leading 14 rounds even or under par... Had the most Top-five finishes on the team with six.

AS A SOPHOMORE (2013-14)

Competed in all 13 events for Kansas... 2014 All-Big 12 selection... Earned Big 12 All-Tournament honors for the second straight season finishing tied for second in 2014... Academic All-Big 12 First Team selection who was nominated for CoSIDA Academic All-America studying sports science/sports management... Led Kansas with a (74.46) scoring average, breaking her own KU single-season record of 74.83 set in 2012-13... Finished with a team-best 12 rounds of even par or better... Kansas counted 33 of her 36 rounds (91.7 percent) played in 2013-2014, a team best... Shot five rounds in the 60s, including two at the Big 12 Championship and one at the NCAA Central Regional (May 8-10)... Best finish was second three times: at the Diane Thomason (Oct. 12-13) in Iowa City, Iowa; tied for second at the Cardinal Cup (Sept. 16-17) in Simpsonville, Kentucky; and tied for second at the Big 12 Championship (April 25-27) at the UT Golf Club in Austin, Texas... Best 54-hole total (211) came at Big 12

Championship at the UT Golf Club in Austin, Texas, which also set the KU 54-hole record... Led Kansas with the lowest 54-hole total in seven of the 13 events.

AS A FRESHMAN (2012-13)

Set the school season per round average record with a 75.42 average... Competed in all five fall events for Kansas... Finished first or second for Kansas in nine of 11 events... Claimed her first individual collegiate title at Price's "Give Em' Five" Intercollegiate (Oct. 8-10), shooting a three-round total score of 69-71-73--213... Her 213 in Las Cruces was her best 54-hole score of 2012-13... Her 69 in the first round would establish her career low... Shot 75 or better in 16 rounds, including six rounds of par or under par... Earned Big 12 All-Tournament honors by finishing tied for 10th at the Big 12 Championship (April 19-21) with a three-round 229 (+11).

HIGH SCHOOL

Coached by Somsaksri S. Srisuwan... Attended Praphamontree II School in Samutprakan, Thailand.

KAWINPAKORN AT KANSAS

Tournament	Score	Place			
Fall 2015			Lady Buckeye Invitational	76-74-77--227	T6th
Palmetto Intercollegiate	70-73-70--213	1st	SMU Invitational	71-76--147	T7th
Chip-N Club Invitational	72-72-68--212	1st	Briar's Creek Invitational	76-75-72--223	T15th
Schooner Classic	63-68--131	1st	3M Lady Jaguar Invitational	77-81-72--230	T19th
Minnesota Invitational	74-75-74--223	T-10th	FSU Match Up	79-80-75--234	T45th
Marilynn Smith Sunflower Invitational	72-73-73--218	T-7th	Fall 2013		
Spring 2015			Palmetto Intercollegiate	75-76-69--220	T7th
NCAA Regionals	67-71-75--213	T10th	Diane Thomason Invitational	78-70-75--223	T2nd
Big 12 Conference Championship	73-69-75--217	T5th	Challenge at Onion Creek	74-71-73--218	7th
SMU/DAC Invitational	76-70-69--215	T1st	Marilynn Smith Invitational	72-74-89--235	T12th
SDSU Farms Invitational	3-1 (W-W-L-W)	--	Cardinal Cup	72-68-73--213	T2nd
Arizona Wildcat Invitational	79-72-76--227	T49th	Spring 2013		
Allstate Sugar Bowl Intercollegiate	71-78-82--231	T38th	Big 12 Championship	76-77-76--229	T10th
Kansas-Tulsa Dual	74	4th	Indiana Invitational	78-73-74--225	28th
Fall 2014			Briar's Creek Invitational	79-77-76--232	T25th
Palmetto Intercollegiate	69-76-68--213	2nd	Jayhawk Cornhusker Challenge	82	T9th
Ron Moore Women's Intercollegiate	71-72-72--215	2nd	Clover Cup	75-75-79--229	T38th
Lady Paladin Invitational	75-73-70--218	T10th	Sir Pizza Cards Challenge	72-72-81--225	T12th
Minnesota Invitational	74-82-73--229	T28th	FSU Match Up	80-74-72--226	T26th
Marilynn Smith Sunflower Invitational	74-69-79--222	T-5th	Fall 2012		
Spring 2014			Edwin Watts/Palmetto Intercollegiate	79-73-75--227	T32nd
NCAA Championship	83-71-75-70--299	T84th	Susie Maxwell Berning Classic	71-75-81--227	T30th
NCAA Regional	75-69-80--224	T24th	Price's "Give 'Em Five" Intercollegiate	69-71-73--213	1st
Big 12 Championship	69-73-69--211	T2nd	Marilynn Smith Sunflower Invitational	73-73-77--223	5th

Year	Events	Rounds	Strokes	Low-High	Average	Wins	T-5	T-10	T-20	in 60's	Low-54	Top Finish
12-13	11	31	2,338	69-82	75.42	1	2	4	5	1	213	1st
13-14	13	39	2,904	68-89	74.46	--	3	7	10	5	211	T2nd
14-15	11	31	2,274	67-82	73.35	--	6	8	8	6	213	T1st
15-16	5	14	997	63-75	71.21	3	3	5	5	3	212	1st
Total	40	115	8,513	63-89	74.02	4	14	24	28	15	211	1st

School Record	Kawinpakorn	Year(s)	Previous Holder
Season Stroke Average	73.57	2014-15	Yupaporn Kawinpakorn, 74.46 (13-14)
Career Top-10 Finishes	24	2012-15	Holly Reynolds, 21 (1991-94)
Career Top-5 Finishes	14	2012-15	Holly Reynolds, 13 (1991-94)
Lowest 18-Hole Total	63	Fall 2015	Yupaporn Kawinpakorn, 67 (Spring 2015)
			Meghan Potee, 67 (Fall 2011)
			Emily Powers, 67 (Fall 2007)
			Amanda Costner, 67 (Fall 2005)
Lowest 54-Hole Total	211	Spring 2014	Amanda Costner, 212 (Fall 2005)



PORNVIPA SAKDEE

Junior

Kamphaeng Phet, Thailand

Watchara Wittaya School



CAREER HONORS

2014-15: Big 12 All-Tournament Team.

PERSONAL

Nickname is "Fai"... Born in Kamphaeng Phet, Thailand... Daughter of Viroj and Siriporn... Has two younger siblings, Kanatip and Sasikarn... Majoring in Business/Management and Leadership.

AS A SOPHOMORE (2014-15)

Played in 11 events for the Jayhawks... Improved her average stroke per round score to 74.9... KU counted 31 of her 32 rounds played for 96.8 percent... Won the Marilyn Smith Sunflower Invitational in Lawrence (Sept. 8-9) with a score of 216... Also had a score of 216 at the Big 12 Conference Championship in San Antonio (April 23-25) which earned her fourth place and a spot on the Big 12 All-Tournament Team... Best rounds came at the Lady Paladin Invitational in Greenville, South Carolina (Sept. 21-23)

where she shot a 68 (-4) and also the Big 12 Conference Championship where she broke a conference-record low round with the same score... Finished second on the team in top-five finishes with three... Second on the team with three top five finishes... Low 54 score of 216 was second on the team... Shot two rounds in the 60's.

AS A FRESHMAN (2013-14)

Played in all 13 events for the Jayhawks... Averaged 76.54 with 39 rounds scored... Third on the team with four rounds of even par or better... KU counted 30 of 39 rounds played for 76.9 percent... Finished in the top-20 of four events... Finished 14th at the Challenge at Onion Creek (Sept. 30-Oct. 1) with a 221 (+11)... Best finish of the year was at the Palmetto Intercollegiate (Oct. 27-28) where she tied for fourth with a 217 (+1)... Shot best round of the year, 69 (-3), in the final round of the Palmetto Intercollegiate... Tied for eighth at the 3M Lady Jaguar Intercollegiate (March 14-16) with a 225 (+9)... Tied for

KU's second-best score at the Big 12 Championship (April 25-27) with a 211 (+11), which tied for 26th.

HIGH SCHOOL

Played at Watchara Wittaya School in Kamphaeng Phet, Thailand... A top-50 player according to the World Junior Golf Rankings... Ranked No. 37 in the world and No. 5 in her class after claiming top-medalist honors at the TOYA Polish Junior Golf Championship in July 2012, a World Junior Golf Series event in Poland... Placed third at both the Thailand Ladies Amateur and Thailand Ladies Open... Previous medalist of the Thailand Northern Junior Golf Championship and was runner-up at the Hank Haney Junior Golf Championship... As a 16-year-old in 2011, she bolted to the top of the leaderboard at the Malaysian Ladies Amateur with a one-under 70 before finishing in the top-five... Second runner-up of Thailand Junior Golf Championship in Phuket, Thailand... Two-time certification of the excellent academic results in high school.

SAKDEE AT KANSAS

Tournament				Score		Place		Spring 2014				
Spring 2015								NCAA Championship		89-77-74-72--312		T122nd
Big 12 Conference Championship				68-74-74--216		4th		NCAA Regional		77-75-79--231		T51st
SMU/DAC Invitational				73-79-78--230		T39th		Big 12 Championship		76-72-79--227		T26th
SDSU Farms Invitational				1-3 (L-L-L-W)		--		Lady Buckeye Invitational		77-86-74--237		T38th
Arizona Wildcat Invitational				78-75-75--228		T53rd		SMU Invitational		79-74--153		T23rd
Allstate Sugar Bowl Intercollegiate				81-78-78--237		T51st		Briar's Creek Invitational		81-74-72--227		T31st
Kansas-Tulsa Dual				75		T12th		3M Lady Jaguar Invitational		81-70-74--225		T8th
Fall 2014								FSU Match Up		78-80-74--232		T40th
Palmetto Intercollegiate				73-71-79--223		T20th		Fall 2013				
Ron Moore Women's Intercollegiate				70-75-72--217		3rd		Palmetto Intercollegiate		74-74-69--217		T4th
Lady Paladin Invitational				68-79-80--227		T36th		Diane Thomason Invitational		80-76-81--237		T47th
Minnesota Invitational				77-77-75--229		T28th		Challenge at Onion Creek		70-77-74--221		14th
Marilynn Smith Sunflower Invitational				70-73-73--216		1st		Marilynn Smith Invitational		83-78-81--242		T32nd
								Cardinal Cup		75-74-75--224		T14th
Year	Events	Rounds	Strokes	Low-High	Average	Wins	T-5	T-10	T-20	in 60's	Low-54	Top Finish
13-14	13	39	2,985	69-89	76.5	--	1	2	4	1	217	T4th
14-15	10	28	2,098	68-80	74.9	1	3	3	4	2	216	1st
Total	23	67	5,083	68-89	75.86	1	4	5	8	3	216	1st

**MACKENZIE SEXE**

Sophomore
Savage, Minn.
Prior Lake High School

**PERSONAL**

Full name is MacKenzie Sexe... Nickname is "Kenzie"... Born in Topeka, Kansas... Parents are Kendra and Ed Sexe... Has a younger brother, Luke... Home course is The Wilds Golf Club in Prior Lake, Minnesota... Competed in the Women's South Atlantic Amateur in 2014... Helps her community by being a part of the Junior Optimist Club and assisting with the First Tee program... Optimist Club essay contest winner in 2014... Plans to study business and pre-medicine.

AS A SOPHOMORE (FALL 2015)

Competed in four events in the fall... Carded a career-best 54-hole score of 238 at the Minnesota Invitational (Sept. 14-15) to tie for 58th... Recorded a career-best 18-hole score of 73 in the second round of the Schooner Classic (Sept. 19-21) en route to tying for 59th place... Tied for a career-best 49th place at the Chip-N Club Invitational after shooting 240.

AS A FRESHMAN (2014-15)

Competed in two events, the Marilyn Smith Sunflower Invitational in Lawrence (Sept. 8-9) and Kansas-Tulsa Dual in Owasso, Oklahoma (Feb. 8)... Recorded a career-best round of 78 at the Kansas-Tulsa Dual... Averaged 83.2 strokes per round on the year.

HIGH SCHOOL

Played for coach Corey Carney at Prior Lake High School in Savage, Minnesota, lettering all four years... Won the South Suburban Conference in stroke average in spring 2014... Four-time All-Academic Team member in the South Suburban Conference from 2011-14... Voted Most Valuable Player three times at Prior Lake HS from 2012-14... All-Conference Honorable Mention in the South Suburban Conference in 2011... South Suburban Conference Rookie of the Year in 2011... Voted team captain her junior and senior seasons... Laced 12th at the High School Class AAA State Tournament in 2012... Finished 10th the next year in

the High School Class AAA State Tournament in 2013... Conference tournament runner-up in 2012... Conference champion in 2014... National Honor Society Member from 2012-14... Board Scholar from 2011-14... National Business Honor Society from 2013-14.

SEXE AT KANSAS

Tournament	Score	Place
Fall 2015		
Chip-N Club Invitational	79-83-78--240	T49th
Schooner Classic	84-73--157	T59th
Minnesota Invitational	81-80-77--238	T58th
Marilynn Smith Sunflower Invitational	81-78-83--242	T50th
Spring 2015		
Kansas-Tulsa Dual	78	T9th
Fall 2014		
Marilynn Smith Sunflower Invitational	87-83-85--255	T57th

Year	Events	Rounds	Strokes	Low-High	Average	Wins	T-5	T-10	T-20	in 60's	Low-54	Top Finish
14-15	2	4	333	78-87	83.2	--	--	1	1	--	255	T57th
15-16	4	11	877	73-83	79.73	--	--	--	--	--	238	T49th
Total	6	15	1,210	73-87	80.67	--	--	1	1	--	238	T49th



PITSINEE WINYARAT
Sophomore
Bsnkok, Thailand
Bromsgrove International School



PERSONAL

Nickname is "Lizzie"... Parents are Pisant and Janthana Winyarat... Member of the Thailand Ladies National Team in 2012... Ranked No. 30 in the 2015 recruiting class in *Golfweek* Rankings... Won a bronze medal for individual and silver medal for Bangkok Team at the 41st Chaing Mai National Games... Won a gold medal for Bangkok Team at 34th Phrae Student National Games... Won a gold medal for Bangkok Team at 29th Maha Srakham Junior National Games... 2013 runner-up finish at Callaway World Match Play.

AS A SOPHOMORE (FALL 2015)

Competed in all five fall events... Carded a 234 (+18) to tie for 36th at the Marilyn Smith Sunflower Invitational (Sept. 7-8)... Shot a career-best 230 (+14) twice at the end of the fall... Tied for 24th at the Chip-N Club Invitational (Oct. 5-6) and 57th at the Palmetto Intercollegiate (Oct. 25-27) with

scores of 230 in both events... Averaged 78.64 strokes per round.

AS A FRESHMAN (2014-15)

Competed in seven events for the Jayhawks in her freshman campaign... Recorded best round at the Kansas-Tulsa Dual (Feb. 8) with a score of 72... Best finish also came at the Kansas-Tulsa Dual where she finished third... Best 54-hole finish was tied for 39th place at the Kansas City Shootout (April 6-7) with a 251 (83-79-89).

HIGH SCHOOL

Competed at Bromsgrove International School in Bangkok for her high school career... Bromsgrove is located within the grounds of a 36-hole golf course and is the home of junior golf in Thailand.

WINYARAT AT KANSAS

Tournament	Score	Place
Fall 2015		
Palmetto Intercollegiate	75-79-76--230	T57th
Chip-N Club Invitational	75-77-78--230	T24th
Schooner Classic	76-77--153	T48th
Minnesota Invitational	86-81-83--250	65th
Marilynn Smith Sunflower Invitational	82-75-77--234	T36th
Spring 2015		
Big 12 Conference Championship	83-86-83--252	45th
Kansas City Shootout	79-80-78--237	T39th
Arizona Wildcat Invitational	83-75-90--248	T75th
Allstate Sugar Bowl Intercollegiate	83-79-89--251	T79th
Kansas-Tulsa Dual	72	3rd

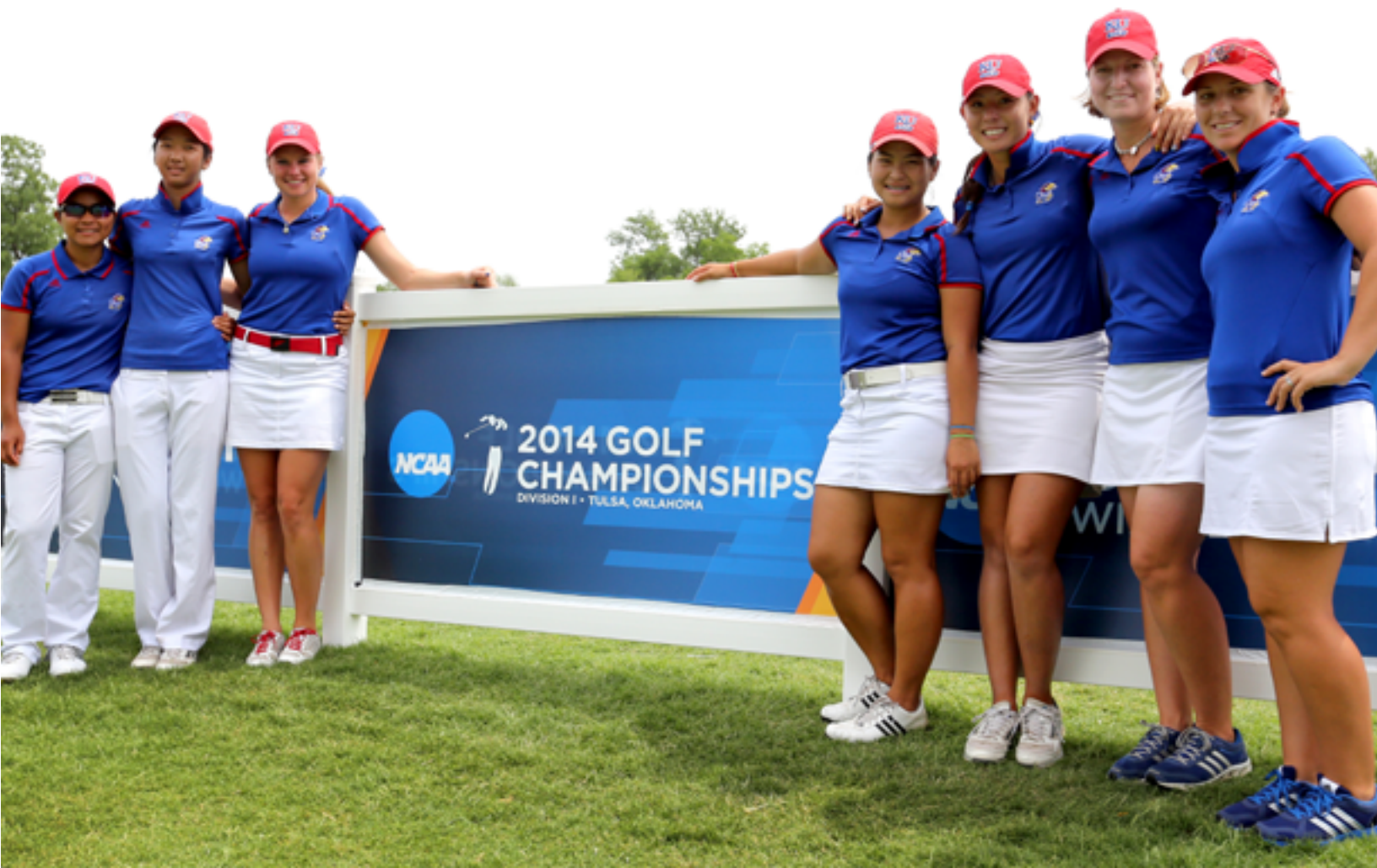
Fall 2014

Ron Moore Women's Intercollegiate	80-79-79--238	T54th
Marilynn Smith Sunflower Invitational	81-83-79--243	47th

Year	Events	Rounds	Strokes	Low-High	Average	Wins	T-5	T-10	T-20	in 60's	Low-54	Top Finish
14-15	7	19	1,541	72-89	81.11	--	1	1	1	--	238	T39th
15-16	5	14	1,101	75-86	78.64	--	--	--	--	--	230	T24th
Total	12	33	2,642	72-89	80.06	--	1	1	1	--	230	T24th



The Coaches





Erin O'Neil

POSITION

HEAD COACH

ALMA MATER

GEORGIA, '97

HOMETOWN

ZEPHYRHILLIS, FL

HISTORY

KANSAS

2000-04

AUBURN

Erin O'Neil is in her 12th season as head coach of the Kansas women's golf team, the longest tenure of any women's golf coach at KU.

O'Neil came to KU in 2004 after four seasons as an assistant at Auburn. In her first season as head coach, O'Neil led the Jayhawks to a first-place finish at the Marilynn Smith Sunflower Invitational, the program's first team title since 2000. Under O'Neil, Kansas has won 12 tournaments. Additionally, O'Neil has guided Kansas to 74 top-10 finishes and 46 in the top five.

Her second season at KU continued building upon the foundation of success she erected her first year with another tournament victory at the 2006 Mountain View Collegiate as well as an individual championship for Chelsey Pryor at the 2005 ORU Shootout. The third season of the O'Neil era brought even more success; another tournament win at the 2006 Sunflower Invitational on top of three top-five finishes. O'Neil also guided Amanda Costner to an individual Big 12 Championship. The 2007-08 season saw Kansas win a tournament yet again after KU captured the title at the Marilynn Smith Invitational. O'Neil extended her impressive streak to five straight years of winning a tournament when the Jayhawks won the team and Emily Powers won the individual 2009 Duramed Collegiate Invitational.

O'Neil coached KU to a historical season in 2013-14. The Jayhawks finished the 2014 Big 12 Championship tied for fourth place, the best conference finish ever for KU since it finished third in 1992 in the Big Eight Championship. She helped lead the Jayhawks to their first NCAA Regional appearance in school history. The Jayhawks not only qualified, but finished in the top five in the 2014 NCAA Central Regional Tournament. After a strong showing at regionals, they also qualified for the NCAA Championship for the second time in school history, the first time since 1990.

O'Neil has overseen the development of several individual champions while at KU, including junior Pornvipa Sakdee (2014 Marilynn Smith Invitational) and senior Yupaporn Kawinpakorn (2012 Price's "Give 'Em Five," 2015 Schooner Classic, 2015 Chip-N Club Invitational and 2015 Palmetto Intercollegiate) as well as graduated Jayhawks Meghan Potee (2013 Marilynn Smith Invitational), Grace Thiry (2010 Marilynn Smith Invitational), Emily Powers (2008 Marilynn Smith Invitational, U.S. Open qualifier), Annie Giangrosso (2006 Kansas Women's Amateur champion), Meghan Gockel (Duramed Collegiate Invitational 2009), Amanda Costner (2005 Lady Boilermaker Champion, All-Big 12 First Team, NCAA Regional qualifier, 2007 Big 12 Champion and 2007 Big 12 Sportsperson of the Year) and Chelsey Pryor (2005 ORU Shootout winner).





Under O'Neil, the Kansas record book has practically been rewritten. The 15 lowest 18-hole individual scores, 25 lowest season stroke averages, 17 lowest 18-hole team scores and 10 lowest 54-hole scores have all been recorded during O'Neil's tenure. Without a doubt, O'Neil has ushered in the most successful era of KU women's golf, capturing 12 of the program's 27 team titles.

Student-athletes have also thrived off the golf course during O'Neil's tenure. O'Neil has overseen 42 Jayhawks placed on an Academic All-Big 12 Conference Team, as well as 24 Women's Golf Coaches Association All-American Scholars. In 2007, Amanda Costner was awarded Big 12 Sportsperson of the Year, an honor based on athletic performance, academic achievement and citizenship.

Prior to coming to KU, O'Neil was an assistant coach at Auburn, O'Neil helped lead the Tigers to three top-10 NCAA Championship team finishes, including a tie for second in 2002. She coached four All-Americans and seven all-conference selections during her stint there. Before joining the Auburn program, O'Neil played professionally for three years on the Futures Tour and the Kosaido Ladies Asian Tour.

O'Neil was a four-year letterwinner at the University of Georgia from 1994-97 and led the Bulldogs to a pair of SEC Championships in 1994 and 1997. She was a three-time All-SEC selection from 1994-96 and earned SEC Freshman of the Year honors in 1994. She won the 1995 Auburn Tiger-Derby Invitational and shot a 66 at the 1997 SEC Championship, the second-lowest round in UGA history.

O'Neil was listed on the Director's Honor Roll for six quarters while at Georgia and was a two-time SEC Academic Honor Roll selection in 1996 and 1997. As an amateur, O'Neil qualified for seven United States Amateur Championships, as well as two United States Opens.

Kansas Under O'Neil

11 Individual Medalists

12 Team Titles

24 WGCA All-American Scholars



Katy Nahm

POSITION	ASSISTANT COACH
ALMA MATER	CCU, '07
HOMETOWN	NICHOLS, S.C.
HUSBAND	JOSH
HISTORY	KANSAS
2009-11	HANK HANEY ACAD.
2007-09	CCU

Katy (Heher) Nahm came to Kansas in July 2011 as an assistant women's golf coach. Prior to KU, Nahm spent two years as an instructor/coach at the Hank Haney International Junior Golf Academy in Hilton Head Island, South Carolina. One of her strengths is working with players on their short games.

Since Nahm came to Kansas, the Jayhawks have won six tournaments, had 19 top-five finishes and 35 top-10 finishes. Under the development of Nahm, six Jayhawks were able to improve their average stroke score in the 2013-14 season. She also helped the Jayhawks qualify for regionals and nationals in the 2013-14 season.

A member of the Professional Golfers' Association of America, prior to Hank Haney's Academy, Nahm was an assistant coach at Coastal Carolina from 2007-09 and helped the team to a Big South Conference Championship in 2009.

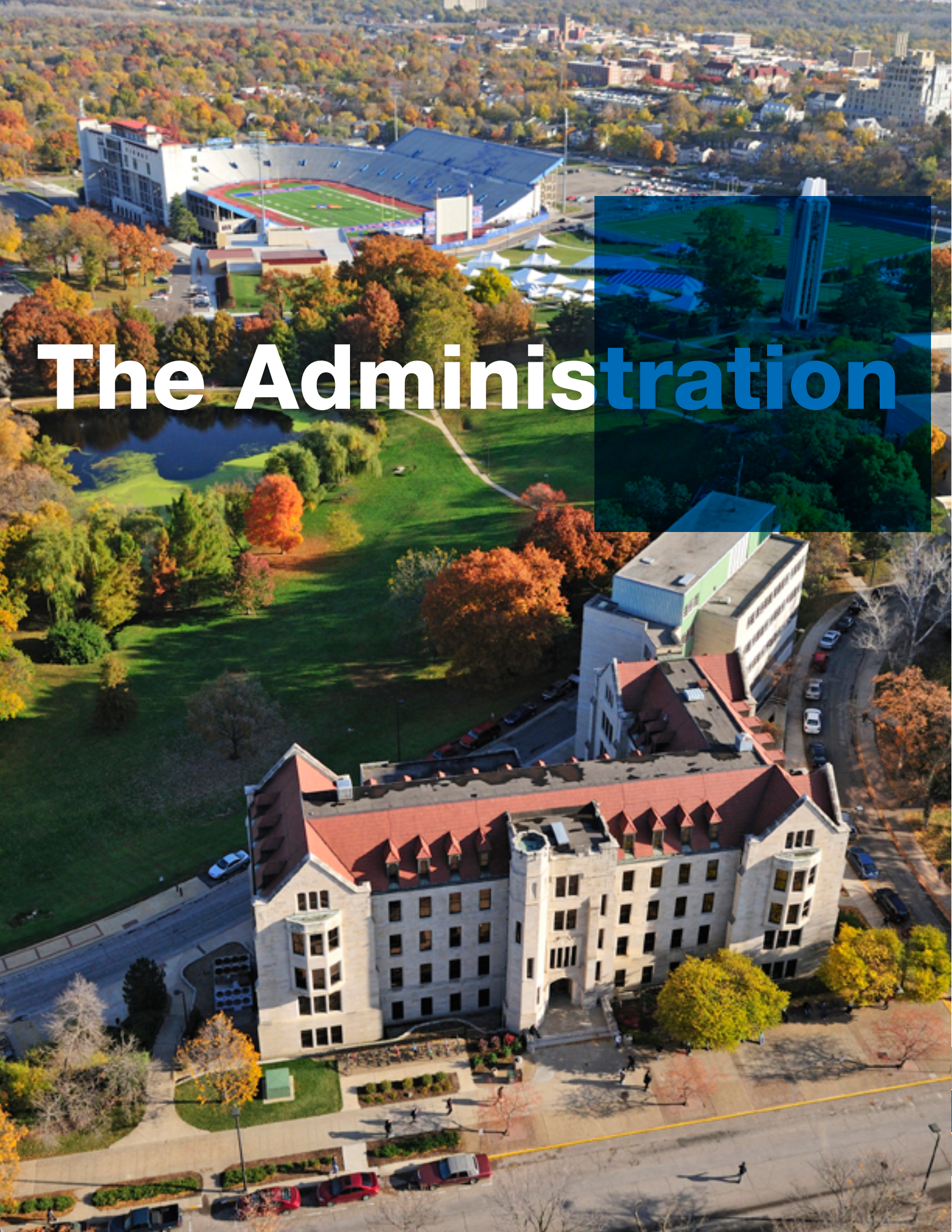
Nahm played golf at Coastal Carolina and was a three-time All-Big South selection, as well as the league's freshman of the year, in 2004. In her sophomore season the Lady Chanticleers won the conference team title and she was the individual runner-up.

Nahm was a four-time All-American Scholar, a two-time All-Big South Academic selection and played in a school-record 127 rounds.

The Nichols, South Carolina native graduated with a degree in marketing from Coastal Carolina in 2007 and earned her master's in business administration from Coastal Carolina in 2009.

She is married to Josh Nahm, a golf instructor at Firekeeper Golf Course in Mayetta, Kansas, just north of Topeka, and a former instructor at the Hank Haney International Junior Academy in Hilton Head, South Carolina.





The Administration

**DEBBIE VAN SAUN****POS.**SENIOR ASSOCIATE AD/SWA
ADMINISTRATOR**STEPHANIE SOASH****POS.**

ADMINISTRATIVE ASSISTANT

**AARON CARBUHN****POS.**

SPORTS NUTRITIONIST

**BILL COWGILL****POS.**ASSOCIATE DIRECTOR OF SPORTS
MEDICINE**SHERIECE SADBERRY****POS.**COUNSELING AND SPORT
PSYCHOLOGIST**GLENN CAIN JR.****POS.**ASSISTANT STRENGTH AND
CONDITIONG COACH**GLENN QUICK****POS.**ASSOCIATE ATHLETICS DIRECTOR -
ACADEMIC AND CAREER COUNSELING



BERNADETTE GRAY-LITTLE

POSITION

CHANCELLOR

EXPERIENCE

SIXTH AT KANSAS

ALMA MATER

MARYWOOD COLLEGE

HUSBAND

SHADE KEYS LITTLE

HISTORY

NORTH CAROLINA,
VICE CHANCELLOR / PROVOSTNORTH CAROLINA,
DEAN OF ARTS AND SCIENCESNORTH CAROLINA,
EXECUTIVE VICE PROVOSTNORTH CAROLINA,
SENIOR ASSOC. DEANNORTH CAROLINA,
PSYCHOLOGY CHAIRNORTH CAROLINA,
DIR. CLINICAL PSYCHOLOGY GRAD.

Since arriving at the University of Kansas in 2009, Bernadette Gray-Little has advanced KU's mission of lifting students and society by educating leaders, building healthy communities, and making discoveries that change the world.

Through the Bold Aspirations strategic plan, KU is changing the way it prepares students for success. It's fostering research and scholarship across all disciplines, and sharing the benefits of a flagship university with the state and world.

Gray-Little led the effort to create new admission standards for the University of Kansas. These new standards take effect in 2016 and will give students and families a more accurate picture of what it takes to be successful at a research university.

Under Chancellor Gray-Little's leadership, the university has also revamped financial aid, creating four-year renewable scholarships and expanding the Jayhawk Generations Scholarship. And it has launched its first university-wide curriculum, the KU Core, which incorporates both classes and experiences, making KU a leader among its national peers.

Gray-Little has also been instrumental to Far Above: The Campaign for Kansas, KU Endowment's \$1.2 billion comprehensive fundraising campaign. Additionally, the university's Changing for Excellence initiative is making administrative operations more efficient, with the savings being invested in education and research.

As chancellor, Gray-Little is the chief executive officer of the university, overseeing campuses in Lawrence, Kansas City, Overland Park, Salina and Wichita, as well as research and educational centers in Garden City, Hays, Parsons, Pittsburg, Topeka and Yoder.

Gray-Little was one of four university leaders selected to represent the Association of Public and Land-grant Universities at a White House summit on math and science education in January 2010. She is also on the board of trustees for the Online Computer Library Center, an international organization dedicated to expanding public access to information and research.

Prior to becoming KU's 17th Chancellor, Gray-Little held leadership positions at the University of North Carolina-Chapel Hill, including executive vice chancellor and provost.





SHEAHON ZENGER

POSITION ATHLETICS DIRECTOR

EXPERIENCE FIFTH AT KANSAS

ALMA MATER KANSAS STATE

WIFE PAM

CHILDREN LUKE, ABBY, JAKE

HISTORY ILLINOIS STATE,
ATHLETICS DIRECTOR

KANSAS STATE,
ASSOC. ATHLETICS DIRECTOR

WYOMING,
ASST. HEAD FOOTBALL COACH

WYOMING,
FOOTBALL RECRUITING COORD.

SOUTH FLORIDA,
FOOTBALL RECRUITING COORD.

KANSAS STATE,
DIRECTOR OF FOOTBALL OPS.

DRAKE,
ASST. FOOTBALL COACH

MANHATTAN HIGH SCHOOL,
HEAD FOOTBALL COACH

•A National Championship for the Women's Outdoor Track & Field team, and seven individual national championships.

•An NCAA Final Four appearance for Men's Basketball and five more Big 12 regular-season Championships, raising that streak of titles to 11.

•Two NCAA Sweet 16 appearances for Women's Basketball.

•An NCAA Sweet 16 (and three straight NCAA appearances) for Volleyball.

•NCAA Championship appearances for Softball (twice), Baseball, Soccer and Women's Golf.

•A National Coach-of-the-Year award (Stanley Redwine, women's track and field) and several Big 12 Conference Coach-of-the-Year awards – Bill Self, men's basketball (twice), Stanley Redwine, women's track and field (twice), Ray Bechard, volleyball (twice), and Clark Campbell, swimming.

During the last two academic years – 2013-14 and 2014-15 – 11 KU teams were represented in NCAA postseason competition, the most KU appearances in one year in more than a decade.

Zenger has spearheaded a tremendous upgrade in Kansas Athletics' facilities as well – improvements he expects will help KU's coaches and student-athletes continue their run of outstanding performances. Most notable among these is the completion of Rock Chalk Park, which contains new, state-of-the-art stadiums for KU's Track & Field, Soccer and Softball programs. Memorial Stadium has received a facelift as well. In summer 2014 the track surrounding the football field was removed, replaced with new artificial turf, bringing the turf to within 10 feet of the stands. In addition, construction is underway on the DeBruce Center, the permanent home of James Naismith's original "Rules of Basket Ball," adjacent to historic Allen Fieldhouse. Finally, the beautiful new McCarthy Hall, which houses the men's basketball team and an equal number of distinguished non-student-athletes, opens its doors for the 2015-16 academic year.

Zenger came to KU after serving for five years as athletics director at Illinois State University, helping steer ISU Athletics to a place of prominence in the Missouri Valley Conference. The Redbirds won a conference-leading seven league titles during the 2009-10 season and captured their second Valley All-Sports Trophy in three years. ISU also reached highs in fundraising, academics and community service during Zenger's tenure there.

Zenger's career took several turns before landing in athletics administration. After playing football at Fort Hays State and Mid-American Nazarene College, and even before he finished his undergraduate degree at Kansas State, he was pursuing his dream of coaching by assisting the football coaches at Manhattan (Kansas) High School. His first college football coaching job came at Drake University right after graduation; he then joined Bill Snyder's staff at Kansas State, serving in key roles as assistant recruiting coordinator and director of football operations.

It became evident, though, that more than coaching was in store for Zenger. He came to KU to earn his Ph.D. in educational policy and leadership, while strengthening his understanding of university leadership at the highest levels.

Still, coaching stayed in his blood. He joined the football staff at the University of South Florida and then at the University of Wyoming before returning to Kansas State, eventually serving as KSU's associate athletics director for development. He held that position until becoming Athletics Director at Illinois State in 2005.

Zenger served for three years on the NCAA Division I Committee on Student-Athlete Reinstatement. He also served on two NCAA Division I Football Championship Subdivision (FCS) Division committees, and was a member of the Executive Committee of NACDA's Division I FCS Athletic Directors Association. He is married to the former Pam McAnarney; they have three children: Luke, Abby and Jake.

Dr. Sheahon (SHAY-un) Zenger is a coach at heart. But when KU Chancellor Bernadette Gray-Little introduced the Hays, Kansas, native as KU's Athletics Director January 3, 2011, he promised not to call any plays for the coaches. That doesn't mean, though, that he won't be right there with them – and their student-athletes – every step of the way. For it's his genuine care for coaches and student-athletes that has stamped his career in intercollegiate athletics.

Since Zenger's arrival at KU, those coaches and student-athletes have raised the bar with outstanding performances on both the conference and national stages. Highlights include:





Record Book



2014-15 Season



TEAM RESULTS

DATE	TOURNAMENT	1ST	2ND	3RD	4TH	SCORE	+/-	FINISH	TEAMS	PAR	TOP INDIVIDUAL
9/8-9	MARILYNN SMITH SUNFLOWER INVITATIONAL	296	294	310	--	900	+36	2ND	11	72	PORNVIPA SAKDEE, 1ST (216)
9/15-16	MINNESOTA INVITATIONAL	302	303	300	--	905	+41	3RD	14	72	GABRIELLA DIMARCO, T6TH (221)
9/21-23	LADY PALADIN INVITATIONAL	289	298	305	--	892	+28	T5TH	18	72	YUPAPORN KAWINPAKORN, T10TH (218)
10/10-12	RON MOORE WOMEN'S INTERCOLLEGIATE	289	296	299	--	884	+20	2ND	12	72	YUPAPORN KAWINPAKORN, 2ND (215)
10/26-28	PALMETTO INTERCOLLEGIATE	288	303	306	--	897	+18	5TH	20	72	YUPAPORN KAWINPAKORN, 2ND (213)
2/8	KANSAS-TULSA DUAL	292	--	--	--	292	+4	1ST	2	72	MINAMI LEVONOWICH, 1ST (71)
2/22-24	ALLSTATE SUGAR BOWL INTERCOLLEGIATE	306	309	316	--	931	+28	12TH	15	72	MINAMI LEVONOWICH, T35TH (230)
3/16-17	ARIZONA WILDCAT INVITATIONAL	312	299	302	--	913	+49	13TH	15	72	MINAMI LEVONOWICH, T45TH (226)
3/23-25	SDSU FARMS INVITATIONAL (MATCH PLAY)	L(2-3)	W(2.5-2.5)	L(1-3)	W(3-2)	--	--	11TH	16	72	GABRIELLA DIMARCO, (4-0)
4/10-11	DAC/SMU INVITATIONAL	304	298	311	--	913	+49	8TH	16	72	YUPAPORN KAWINPAKORN, T1 (215)
4/23-25	BIG 12 CHAMPIONSHIP	301	301	304	--	906	+42	8TH	9	72	PORNVIPA SAKDEE, 4TH (216)

TEAM STATISTICS

	ROUNDS	TOTAL STROKES	TEAM AVERAGE	1ST ROUND	2ND ROUND	3RD ROUND	4TH ROUND
FALL	15	4,478	298.53	1,464/ 292.8	1,494/ 298.8	1,520/ 304	--
SPRING	13	3,955	304.2	1,515/ 303	1,207/ 301.75	1,233/ 308.25	--
OVERALL	28	8,433	301.2	2,979/ 297.9	2,701 / 300.11	2,753/ 305.9	--

INDIVIDUAL STATISTICS (INDIVIDUAL ROUNDS INCLUDED)

STUDENT-ATHLETE	EVENTS	ROUNDS	STROKES	LOW-HI	AVERAGE	AVG. VS. PAR	WINS	T-5	T-10	T-20	ROUNDS IN 60'S	LOW 54	TOP FINISH
YUPAPORN KAWINPAKORN	11	31	2,273	67-82	73.57	+3.8	--	6	1	--	6	213	T1ST
GABRIELLA DIMARCO	10	28	2,193	71-85	78.3	+17.8	--	--	1	1	--	221	T6TH
PORNVIPA SAKDEE	10	28	2,098	68-81	74.9	+8.2	1	3	0	1	2	216	1ST
MICHELLE WOODS	7	19	1,477	71-84	77.7	+15.6	--	1	1	--	--	222	T5TH
KALLIE GONZALES	5	13	1,043	73-85	80.2	+21.4	--	--	--	--	--	238	T35TH
MINAMI LEVONOWICH	9	25	1,914	71-85	76.6	+12.1	1	--	1	--	--	223	T1ST
MACKENZIE THAYER	4	10	804	74-84	80.4	+21	--	--	--	--	--	232	T26TH
CARLY HUMES	2	4	339	80-88	84.7	+25.5	--	--	--	--	--	259	60TH
MACKENZIE SEXE	2	4	333	78-87	83.2	+21	--	--	--	--	--	255	57TH
PITSINEE WINYARAT	7	19	1,541	72-90	81.1	+23.3	--	1	--	--	--	243	T39TH

2014-15 Tournament Results

MARILYNN SMITH SUNFLOWER INVITATIONAL

SEPT. 8-9 2014 // LAWRENCE, KAN.

ALVAMAR GOLF COURSE - 6,158 YARDS - PAR-72

Team Results	Score	
1. Kansas State	300-296-298--894	+30
2. KANSAS (BLUE)	296-294-310--900	+36
3. Central Arkansas	303-306-298--907	+43
4. Texas Tech	304-303-301--908	+44
5. Oral Roberts	303-304-304-911	+47
T6. Arkansas-Little Rock	306-306-304--916	+52
T6. Arkansas State	313-304-308--925	+61
8. Florida Gulf Coast	316-312-309--937	+73
9. KANSAS (CRIMSON)	322-313-314--949	+85
10. UMKC	326-317-318--961	+97
11. Redlands CC	337-323-326--986	+122

Kansas Individual Results

1. Pornvipa Sakdee (Blue)	70-73-73--216	+E
T5. Yupaporn Kawinpakorn (Blue)	74-69-79--222	+6
T5. Michelle Woods (Crimson)	75-71-76--222	+6
T19. Gabby DiMarco (Blue)	73-76-79--228	+12
T44. Mackenzie Thayer (Crimson)	82-74-76--232	+16
T35. Kallie Gonzales (Blue)	79-76-83--238	+22
T44. Minami Levonowich (Crimson)	79-85-77--241	+25
47. Lizzie Winyarat (Blue)	81-83-79--243	+27
T57. MacKenzie Sexe (Crimson)	87-83-85--255	+39
T32. Carly Humes (Crimson)	86-88-85--259	+43

MINNESOTA INVITATIONAL

SEPT. 15-16, 2014 // MINNEAPOLIS, MINN.

MINIKAHDA CLUB - 6,119 YARDS - PAR-72

Team Results	Score	
1. East Carolina	294-287-298--879	+15
2. Colorado	309-297-294--900	+36
3. KANSAS	302-303-300--905	+41
T4. GRU Augusta	300-301-306--907	+43
T4. Texas	305-301-301--907	+43
6. Purdue	308-292-310--910	+46
7. Minnesota	311-299-302--912	+48
8. Kent State	301-307-306--914	+50
9. SMU	307-305-306--918	+54
10. Illinois	319-293-308--920	+56
11. Fresno State	311-313-300--924	+60
12. Nebraska	312-309-308--929	+65
13. CSU Fullerton	309-308-314--931	+67
14. Texas State	314-299-319--932	+68

Kansas Individual Results

T6. Gabby DiMarco	71-74-76--221	+5
T28. Yupaporn Kawinpakorn	74-82-73--229	+8
T28. Pornvipa Sakdee	77-77-75--229	+11
T37. Michelle Woods	81-74-76--231	+15
T67. Kallie Gonzales	80-78-85--243	+27

LADY PALADIN INVITATIONAL

SEPT. 21-23 // GREENVILLE, S.C.

FURMAN UNIVERSITY GOLF COURSE - 6,266 - PAR-72

Team Results	Score	
1. Furman	286-288-286--860	-4
2. Wake Forest	288-295-299--882	+18
3. Texas Tech	293-290-300--883	+19
4. Florida State	293-294-302--889	+25
T5. Yale	298-292-302--892	+28
T5. KANSAS	289-298-305--892	+28
T7. Kennesaw State	297-294-302--893	+29
T7. North Carolina	295-298-300--893	+29
9. Coastal Carolina	298-300-303--901	+37
10. East Carolina	305-293-312--910	+46
11. ETSU	298-310-305--913	+49
12. Samford	310-294-310--914	+50
13. Tulsa	311-308-296--915	+51
14. Georgia State	303-310-307--920	+56
15. Western Carolina	312-302-307--921	+57
16. Southern Miss	325-311-305--941	+77
17. UNCG	324-309-320--953	+89
18. Wofford	311-314-329--954	+96

Kansas Individual Results

T10. Yupaporn Kawinpakorn	75-73-70--218	+2
T36. Minami Levonowich	74-73-80--227	+11
T36. Pornvipa Sakdee	68-79-80--227	+11
T54. Gabriella DiMarco	72-78-81--231	+15
T59. Michelle Woods	84-74-75--233	+17
T82. Mackenzie Thayer (Ind.)	78-80-84--242	+26

RON MOORE WOMEN'S INTERCOLLEGIATE

OCT. 10-12, 2014 // HIGHLANDS RANCH, COLO.

FURMAN UNIVERSITY GOLF CLUB - 6,457 YARDS - PAR-72

Team Results	Score	
1. Kansas State	291-292-294--877	+13
2. KANSAS	289-296-299--884	+20
3. Long Beach State	293-298-299--888	+24
4. Nebraska	306-296-298--900	+36
5. Denver	301-301-302--904	+40
6. Georgetown	309-302-308--919	+55
T7. Northern Arizona	310-317-300--927	+63
T7. North Dakota	313-309-305--927	+63
9. Northern Colorado	307-314-311--932	+68
10. Wyoming	316-315-311--938	+74
11. Montana State	319-315-308--942	+78
12. North Dakota	332-325-322--979	+115

Kansas Individual Results

2. Yupaporn Kawinpakorn	71-72-72--215	-1
3. Pornvipa Sakdee	70-75-72--217	+1
8. Minami Levonowich	73-75-75--223	+7
T27. Gabriella DiMarco	75-75-80--230	+14
T34. Michelle Woods	77-74-80--231	+15
T54. Pitsinee Winyarat (Ind.)	80-79-79--238	+22

GABRIELLE DIMARCO



KANSAS-TULSA DUAL

FEB 8, 2015 // OWASSO OKLAHOMA

PATRIOT GOLF COURSE - 5,972 YARDS - PAR-72

Team Results	Score	
1. KANSAS	292	+4
2. Tulsa	299	+11

Kansas Individual Results

T1. Minami Levoniwich	71	-1
3. Lizzie Winyarat	72	E
4. Yupaporn Kawinpakorn	74	+2
T5. Pornvipa Sakdee	75	+3
8. Michelle Woods (Ind)	76	+4
T9. MacKenzie Sexe (Ind)	78	+6
11. Carly Humes (Ind)	80	+8
T12. Kallie Gonzales (Ind)	82	+10
T12. Gabby Dimarco (Ind)	82	+10
T12. MacKenzie Thayer (Ind)	82	+10

PALMETTO INTERCOLLEGIATE

OCT 26-28, 2014 // KIAWAH ISLAND, S.C.

TURTLE POINT GOLF COURSE - 5,972 YARDS - PAR-72

Team Results	Score	
1. Coastal Carolina	282-290-294--866	+2
2. GRU Augusta	288-296-294--878	+14
3. Furman	285-305-289--879	+15
4. South Florida	303-299-289--891	+27
5. KANSAS	288-303-306--897	+33
6. College of Charleston	303-301-298--902	+38
7. Campbell	305-297-303--905	+41
T8. Kansas State	298-301-307--906	+42
T8. Chattanooga	304-297-305--906	+42
10. East Tennessee State	305-299-303--907	+43
11. Xavier	303-300-309--912	+48
12. Charleston Southern	307-303-304--914	+50
13. Eastern Michigan	302-306-315--923	+59
14. Elon	304-317-313-928	+64
15. Maryland	309-310-310--929	+65
16. James Madison	304-317-316--937	+73
17. Western Carolina	314-308-318--940	+76
18. Georgia State	322-313-317--952	+88
19. UNCG	326-320-324--970	+106
20. Jacksonville State	333-321-342--996	+132

Kansas Individual Results

2. Yupaporn Kawinpakorn	69-76-68--213	-3
T20. Pornvipa Sakdee	73-71-79--223	+7
T46. Minami Levonowich	74-80-77--231	+15
T69. Michelle Woods	72-82-82--236	+20
T87. Gabriella DiMarco	80-76-84--240	+24

ALLSTATE SUGAR BOWL INTERCOLLEGIATE

FEB. 22-24, 2015 // NEW ORLEANS, LA.

ENGLISH TURN GOLF & COUNTRY CLUB - 6,189 YARDS - PAR-72

Team Results	Score	
1. LSU	284-304-286--874	+10
2. Florida	297-301-288--886	+22
3. UCLA	292-297-297--886	+22
T4. Arizona	301-295-296--892	+28
T4. Tulane	291-298-303--892	+28
6. Oklahoma State	304-304-299--907	+43
7. Vanderbilt	294-306-311--911	+47
8. Mississippi State	308-305-299--912	+48
9. Texas	296-306-313--915	+51
10. UCF	295-320-302--917	+53
11. Denver	310-309-307--926	+62
12. KANSAS	306-309-316--931	+67
13. Michigan State	310-312-314--936	+72
T14. UTSA	319-313-312--944	+80
T14. Clemson	311-320-313--944	+80

Kansas Individual Results

T35. Minami Levonowich	77-74-79--230	+14
T38. Yupaporn Kawinpakorn	71-78-82--231	+15
T51. Pornvipa Sakdee	81-78-78--237	+21
T63. Gabriella DiMarco	77-85-77--239	+23
T79. Pitsinee Winyarat	83-79-89--251	+35

ARIZONA WILDCAT INVITATIONAL

MARCH 16-17, 2015 // TUCSON, ARIZ.

SEWALILO GOLF CLUB- 6,386 YARDS - PAR-72

Team Results	Score	
1. USC	280-271-283--834	-30
2. Arizona	277-285-283--845	-19
3. UNLV	291-292-282--865	+1
4. Campbell	295-287-288--870	+6
5. Texas A&M	295-290-288--873	+9
6. Texas Tech	301-296-291--888	+24
7. Michigan	296-298-300--894	+30
8. New Mexico State	297-297-307--901	+37
9. Houston	296-306-301--903	+39
10. Long Beach State	308-299-297--904	+40
11. Wisconsin	303-291-316--910	+46
12. Washington State	306-300-305--911	+47
13. KANSAS	312-299-302--913	+49
14. Idaho	301-310-304-915	+51
15. Clemson	315-302-305--922	+58

Kansas Individual Results

T45. Minami Levonowich	75-77-74--226	+14
T49. Yupaporn Kawinpakorn	71-78-82--231	+15
T53. Pornvipa Sakdee	81-78-78--237	+21
T63. Gabriella DiMarco	77-85-77--239	+23
82. Kallie Gonzales	84-81-80--245	+29
T84. Pitsinee Winyarat	83-75-90--248	+32

**SDSU FARMS INVITATIONAL**

MARCH 23-25, 2015 // SAN DIEGO, CALIF.

FARMS GOLF CLUB- 6,237 YARDS - PAR-72

Team Results
1. Tennessee
2. Colorado
3. SDSU
4. Arizona State
5. Oklahoma State
6. UNLV
7. Pepperdine
8. California
9. Long Beach State
10. Houston
11. KANSAS
12. Michigan
13. UC Irvine
14. Nevada
15. Boise State

Round One Results

Kansas lost University of California (2-3)

Round Two Results

Kansas def New Mexico (2.5-2.5) Tiebreaker

Round Three Results

Kansas lost Long Beach State (2-3)

Round Four Results

Kansas def Michigan (3-2)

Kansas Individual Results**Record in Tournament**

Gabriella DiMarco	(4-0)
RD1: def Carly Childs (2&1); RD2: def Eva Saulnier (3&2); RD3: def Shawnee Martinez (5&4); RD4: def Kathy Lim (3&1)	
Yupaporn Kawinpakorn	(3-1)
RD1: def Marthe Wold (4&3); RD2: def Katerina Jaeger (4&3); RD3: lost Savannah Knox (4&2); RD4: def Megan Kim (2-up)	
Minami Levonowich	(1-1-1)
RD1: lost Lucia Gutierrez; RD2: tied Manon Molle (Half); RD3: defeated Janelle Sua (DNF); RD4: def Grace Choi (2&1)	
Pornvipa Sakdee	(1-3)
RD1: lost Pauline Loulier (1-up); RD2: lost Alexandra Moisand (3&2); RD3: lost Cassidy Teare (4&3); RD4: def Catherine Peters (4&3)	
Kallie Gonzales	(0-4)
RD1: lost Hannah Suh (4&2); RD2: lost Ingrid Guterrez (3&2); RD3: lost Cheawon Park (2-Up); RD4: lost Emily White (8&7)	

DAC/SMU INVITATIONAL

APRIL 10-11, 2015 // DALLAS, TEXAS

DALLAS ATHLETIC CLUB - 6,345 YARDS - PAR-72

Team Results	Score	
1. Oklahoma State	293-286-296--875	+11
2. Purdue	290-302-291--883	+19
T3. Texas Tech	303-291-294--888	+24
T3. UC Davis	298-288-302--888	+24
5. Houston	300-302-298--900	+36
6. Miami (Florida)	301-296-291--888	+24
7. Kansas State	296-298-300--894	+30
8. KANSAS	304-298-311--913	+37
9. Iowa State	296-306-301--914	+39
10. SMU	308-299-297--915	+40
11. TCU	303-291-316--920	+46
12. Tulsa	306-300-305--927	+47
13. Grand Canyon	312-299-302--933	+49
14. UTSA	301-310-304-935	+51
15. Nebraska	315-302-305--942	+58
16. North Texas	326-310-324--960	+96

Kansas Individual Results

T1. Yupaporn Kawinpakorn	76-70-69--215	-1
T39. Pornvipa Sakdee	73-79-78--230	+14
T42. Minami Levonowich	80-72-80--232	+16
72. Gabriella DiMarco	75-81-88--244	+28
77. Michelle Woods	87-77-84--248	+32

2015 BIG 12 CONFERENCE CHAMPIONSHIP

APRIL 24-26, 2015 // SAN ANTONIO, TEXAS

DOMINION COUNTRY CLUB - 6,246 YARDS - PAR-72

Team Results	Score	
1. Baylor	282-291-294--867	+3
2. TCU	296-295-288--879	+15
3. Texas Tech	289-294-297--880	+16
4. Iowa State	290-300-291--881	+17
5. Oklahoma State	291-293-300--884	+20
6. Texas	300-296-291--887	+23
7. Oklahoma	295-302-297--894	+30
8. KANSAS	301-301-304--906	+42
9. Kansas State	301-305-304--910	+46

Kansas Individual Results

4. Pornvipa Sakdee	68-74-74--216	E
T5. Yupaporn Kawinpakorn	73-69-75--217	+1
T40. Minami Levonowich	81-76-76--233	+17
44. Gabriella DiMarco	79-82-79--240	+24
45. Pitsinee Winyarat	83-86-83--252	+36

MINAMI LEVONOWICH



Marilynn Smith Sunflower Invitational

51

ROCK
CHALK

JAYHAWK

RECORD BOOK

MARILYNN SMITH

Marilynn Smith, 86, was one of the original 13 founders of the Ladies Professional Golf Association (LPGA) in 1950. She is a charter member of the organization. She is a three time President of the LPGA.

Smith won 22 times on the LPGA tour, including the 1963 Titleholders, one of the major women's events at the time, in an 18-hole playoff over Mickey Wright. Before creating the LPGA tour, Smith won the Kansas Women's Amateur Championship three times (1946-47-48). She arrived on the Kansas golf scene from Wichita. Her two-year career at Kansas was highlighted by a 1949 National Collegiate Individual title. Following the title, Smith accepted an offer from Spaulding to turn pro at \$5,000 a year. From 1954-72, she won at least one tour event in 14 of 19 years. In 1963 and 1964, she won the Titleholders Championship.

Smith's contributions and honors include serving as the two-year president of the organization she helped found. She was the first ever female television commentator for a men's professional golf tournament in 1973. In 1979, Smith received the inaugural Patty Berg Award for distinguished service to women's golf. *Golf Digest* presented her the LPGA Founders Cup for charitable service off the course in 1983. She was selected as one of the Distinguished Champions of the Vincent T. Lombardi Tournament in 1987. The award recognized leadership in sports and demonstration of high ideals of public good. Smith was inducted into the World Golf Hall of Fame under the Lifetime Achievement category.



1994 (Oct. 17-18) - Prairie Dunes Country Club (Hutchinson, Kan.)

Top Individual	Team Winner	Top KU Individual
Stacy Kolb-236 (Texas Tech)	Oklahoma State (966)	Michelle Uher-T15th-(253)

1995 (Oct. 16-17) - Crestview Country Club (Wichita, Kan.)

Top Individual	Team Winner	Top KU Individual
Jennifer Hubbard-233 (SMU)	SMU (951)	Mandy Munsch-T12th-(243)

1996 (Oct. 14-15) - Alvarmar Golf Club (Lawrence, Kan.)

Top Individual	Team Winner	Top KU Individual
Rachelle Tacha-230 (Nebraska)	Texas A&M (949)	Anne Clark-T21st-(243)

1997 (Oct. 21-22) - Terradyne Country Club (Andover, Kan.)

Top Individual	Team Winner	Top KU Individual
Jamie Tucker-226 (KU) and Natasha Ausderau (Wichita State)	Kansas (932)	Jamie Tucker-T1st-(226)

2000 (Oct. 15-17)-Colbert Hills (Manhattan, Kan.)

Top Individual	Team Winner	Top KU Individual
Amelia Moses-221 (Missouri)	Missouri (916)	Kristy Straub-T12th-(236)

2001 (Oct. 15-16) - Alvarmar Golf Club (Lawrence, Kan.)

Top Individual	Team Winner	Top KU Individual
Julie Hary-72 (Northern Iowa)	Oklahoma (306)	Heather Rose-T9th-(77)

2002 (Oct. 13-15) - Willowbend Golf Club (Wichita, Kan.)

Top Individual	Team Winner	Top KU Individual
Randi Gauthier-222 (N. Texas)	Kansas State (903)	Heather Rose-T7th-(226)

2003 (Oct. 13-14) - Colbert Hills (Manhattan, Kan.)

Top Individual	Team Winner	Top KU Individual
Samantha Richdale-223 (Ill. St.)	Kansas State (925)	Jill Womble-8th-(234)

2004 (Oct. 11-12) - Alvarmar Golf Club (Lawrence, Kan.)

Top Individual	Team Winner	Top KU Individual
Liz Bennett-230 (Iowa)	Kansas (946)	Annie Giangrasso-5th-(236)

2005 (Oct. 10-11) - Colbert Hills (Manhattan, Kan.)

Top Individual	Team Winner	Top KU Individual
Helene Robert-215 (Kansas State)	TCU (869)	Amanda Costner-6th-(220)

2006 (Oct. 2-3) - Alvarmar Golf Club (Lawrence, Kan.)

Top Individual	Team Winner	Top KU Individual
Anita Ojeda-221 (UALR)	Kansas (917)	Emily Powers-4th-(225)

2007 (Oct. 1-2) - Colbert Hills (Manhattan, Kan.)

Top Individual	Team Winner	Top KU Individual
Julia Potter-143 (Missouri)	Kansas (600)	Camilla Svensson-T4th-(147)

2008 (Sept. 22-23) -Alvarmar Golf Club (Lawrence, Kan.)

Top Individual	Team Winner	Top KU Individual
Emily Powers-149 (Kansas)	Oral Roberts (615)	Emily Powers-1st-(149)

2009 (Sept. 28-29) - Colbert Hills (Manhattan, Kan.)

Top Individual	Team Winner	Top KU Individual
Kelli Shean- 209 (Arkansas)	Tulsa (901)	Emily Powers-T7th-(231)

2010 (Sept. 27-28) - Alvarmar Golf Club (Lawrence, Kan.)

Top Individual	Team Winner	Top KU Individual
Grace Thiry-219 (Kansas)	Kansas (903)	Grace Thiry-1st-(219)

2011 (Sept. 26-27) - Colbert Hills (Manhattan, Kan.)

Top Individual	Team Winner	Top KU Individual
Malin Lundberg-217 (UALR)	UALR (891)	Thanuttra Boonraksasat-T4th- (221)

2012 (Sept. 24-25) - Alvarmar Golf Club (Lawrence, Kan.)

Top Individual	Team Winner	Top KU Individual
Abigail Laker-143 (Arkansas St.)	Kansas (601)	Yupaporn Kawinpakorn-2nd-(146)

2013 (Sept. 23-24) - Colbert Hills (Manhattan, Kan.)

Top Individual	Team Winner	Top KU Individual
Meghan Potee-224 (Kansas)	Kansas (910)	Meghan Potee-1st-(224)

2014 (Sept. 8-9) - Alvarmar Golf Club (Lawrence, Kan.)

Top Individual	Team Winner	Top KU Individual
Pornvipa Sakdee-216 (Kansas)	Kansas State (894)	Pornvipa Sakdee-1st-(216)

2015 (Sept. 7-8) - Colbert Hills (Manhattan, Kan.)

Top Individual	Team Winner	Top KU Individual
Lindsey McCurdy-214 (SMU)	SMU	Yupaporn Kawinpakorn-T7th-(218)

Kwq

Ks

Mj

Rb

All-Time Letterwinners

-A-

Atchison, Sherri 1987-88-89-90

-B-

Bal, Meghna 2008-09-10-11
 Bauerle, Linda 1986
 Bawanan, Jennifer 2001-02-03-04
 Belisle, Tracy 1993-94-95
 Birdsell, Kelly 2005-06
 Bishop, Ashely 1998-99-00-01
 Black, Lisa 1983-84
 Boonraksasat, Thanuttra 2011-12-13-14
 Boozer, Barbara 1975-76
 Boozer, Beth 1975-76-77-78
 Boozer, Beverly 1982-83
 Braymen, Ann 1985-86
 Burgess, Sarah 1978-79-80-81

-C-

Carson, Kalynd 2009
 Clark, Anne 1994-95-96-97
 Clark, Jennifer 2008-09-10-11
 Coe, Patricia 1980-81-82-83
 Costner, Amanda 2004-05-06-07

-D-

DeLong, A. Jacqueline 1977
 DiMarco, Gabriella 2012-13-14-15
 Donnelly, Tara 1994

-E-

Eyre, Catherine 1979

-G-

Giangrosso, Annie 2005-06-07-08
 Gnewuch, Tina 1985-86-87-88
 Gockel, Meghan 2007-08-09-10
 Goetsche, Pamela 1977-78
Gonzales, Kallie 2014-15
 Goolsbe, Barbara 1977-78-80
 Gustafson, Karen 1982

-H-

Hadl, Charneil 1977
 Hallenbeck, Jo Jo 2006-07-08
 Helleberg, Jane 1985-86
 Hepler, Sara 1989
 Hiatt, Jaci 2006-07-08
 Hoins, Nancy 1976-77-78-79
 Holbrook, Ann 1993-94-95
 Howard, Barbara 1980
 Howard, Lisa 1979-80-81-82
 Humes, Carly 2013-14-15

-J-

Jackson, Maria 2009-10-11-12
 Johnson, Cynthia 1979

-K-

Kawinpakorn, Yupaporn 2013-14-15
 Kelly, Maureen 1983-84-85-86
 Kierl, Sarah 2005-06-07-08
 Kruggel, Tiffany 2000-01-02-03

-L-

Lauritsen, Lori 1994-96-97
 Levonowich, Minami 2013-14-15
 Loeffelholz, LeeAnn 1983-84
 Loftus, Ellen 1981
 Lowen, Donna 1987-88-89-90
 Lowery, Ashley 1999

-M-

MacDonald, Jill 2002-03
 Mahoney, Sarah 2000-01
 Marney, Kelly 1996-97
 Martin, Laura 1990-91-92
 Merwald, Julie 1980
 Morrison, Patricia 1975-77
 Mossberg, Suzanne 1987-89
 Mulvihill, Michelle 1986-87-88
 Munsch, Mandy 1996-97-98-99
 Myers, Laura 1989-90-91

-N-

Nugent, Katy 2011-12

-P-

Padden, Carrie 1997-98-99-00
 Pekar, Susan 1985-86-87-88
 Potee, Meghan 2011-12-13-14
 Powers, Emily 2007-08-09-10
 Pryor, Chelsey 2003-04-05-06

-R-

Rainbolt, Alyssa 2008-09-10
 Reinbeck, Cathy 1991-93
 Renz, Lauren 2005
 Reuter, Beth 1995-96-97-98
 Reynolds, Holly 1991-92-93-94
 Rose, Heather 2000-01-02-03
 Russell, Missy 1994-95-96-97

-S-

Sakdee, Pornvipa 2013-14-15
 Sanders, Brenda 1983-84-85-86
 Scheid, Marilee 1984-85-86

Schultz, Andi 1999-2000
 Schwerman, Kendall 2004
Sexe, MacKenzie 2014-15
 Shockley, Toni 1985-86-87
 Shogren, Sharon 1977
 Simpson, Jill 1997-99
 Straub, Kristy 2000-01-02-03
 Svensson, Camilla 2007-08

-T-

Tessary, Susan 1997-98-99-2000
 Thayer, Mackenzie 2013-14-15
 Thiry, Grace 2008-09-10-11
 Thompson, Jessica 1996
 Thornberry, Tegan 2002
 Thorsteindottir, Solveig 1983-84
 Triplett, Shelly 1989-90-91-92
 Tucker, Jamie 1998

-U-

Uher, Michelle 1992-93-94-95

-W-

Webb, Kathy 1975-76
 White, Sally 1979-80
 Williams, Deann 1981-82
 Williamson, Lynn 1993-94-95-96
 Wilson, Sydney 2008-09-10
 Wineinger, Pam 1993-94
 Winkelmann, Meredith 2004-05-06
Winyarat, Pitsinee 2014-15
 Womble, Jill 2004-05-06-07
 Woods, Michelle 2012-13-14-15
 Woods, Tiffany 2004-05

-Y-

Yowell, Audrey 2010-11-12-13

Active players in bold

KANSAS COACHES



ROSS RANDALL
1981-84



KENT WEISER
1985-87



BRAD DEMO
1988-90



SARAH JOHNSON
1991-92



JERRY WAUGH
1993-99



NICOLE HOLLINGSWORTH
2000-02



MEGAN MENZEL
2003-04



ERIN O'NEIL
2004-PRESENT

Individual Records

INDIVIDUAL MEDALISTS

Year	Player (Score)	Tournament
1987	Sue Pekar (150)	Missouri Invitational
1988	Shelly Triplett (155)	Texas Invitational
1988	Sherri Atchison (155)	Texas Invitational
1991	Laura Myers (153)	Minnesota Invitational
1991	Shelly Triplett (226)	Alabama Intercollegiate
1992	Holly Reynolds (220)	Azalea Seahawk Invitational
1992	Holly Reynolds (156)	Cyclone Classic
1992	Holly Reynolds (153)	Yale Intercollegiate
1992	Holly Reynolds (234)	Shocker Fall Classic
1993	Holly Reynolds (224)	Utah Dixie Classic
1994	Holly Reynolds (227)	Aztec Invitational
1994	Holly Reynolds (223)	Indiana Invitational
1996	Missy Russell (234)	SW MO State Invitational
1997	Jamie Tucker (226)	Sunflower Invitational
2000	Sarah Mahoney	Kansas v. Coastal Carolina
2000	Ashely Bishop (75)	Kansas v. College of Charleston
2001	Jennifer Bawanan (71)	Sunflower Invitational
2002	Heather Rose (235)	Waterwood Spring Invitational
2003	Jennifer Bawanan (148)	Aztec Spring Invitational
2005	Chelsey Pryor (226)	ORU Shootout
2007	Amanda Costner (221)	Big 12 Championship
2008	Emily Powers (223)	Sunflower Invitational
2009	Meghan Gockel (218)	Duramed Collegiate Invitational
2010	Grace Thiry (219)	Marilynn Smith Invitational
2012	Yupaporn Kawinpakorn (213)	Price's "Give 'Em' Five"
2013	Meghan Potee (224)	Marilynn Smith Invitational
2014	Pornvipa Sakdee (216)	Marilynn Smith Invitational
2015	Yupaporn Kawinpakorn (131)	Schooner Classic
2015	Yupaporn Kawinpakorn (212)	Chip-N Club Invitational
2015	Yupaporn Kawinpakorn (213)	Palmetto Intercollegiate

KU CAREER TOP-10 FINISHES

1.	Yupaporn Kawinpakorn (current)	24
2.	Holly Reynolds (1991-94)	21
3.	Emily Powers (2007-10)	13
4.	Thanuttra Boonraksasat (2011-14)	12
5.	Laura Myers (1989-92)	11
6.	Sue Pekar (1985-88)	10
7.	Amanda Costner (2004-07)	8
8.	Tina Gneuwuch (1985-88)	7
9.	Shelly Triplett (1989-92)	6
10.	Pornvipa Sakdee (current)	5
	Minami Levonowich (2012-15)	5
	Missy Russell (1994-97)	5
	Donna Lowen (1987-90)	5

KU CAREER TOP-5 FINISHES

1.	Yupaporn Kawinpakorn (current)	14
2.	Holly Reynolds (1991-94)	13
3.	Thanuttra Boonraksasat (2011-14)	8
4.	Laura Myers (1989-92)	6
5.	Amanda Costner (2004-07)	5
	Sue Pekar (1985-88)	5
7.	Pornvipa Sakdee (current)	4
	Emily Powers (2007-10)	4
	Donna Lowen (1987-90)	4
10.	Susan Tessary (1997-2000)	3
	Shelly Triplett (1989-92)	3

TOP SEASON AVERAGES

Average	Player	Year
73.57	Yupaporn Kawinpakorn	2014-15
74.46	Yupaporn Kawinpakorn	2013-14
74.90	Pornvipa Sakdee	2014-15
75.40	Yupaporn Kawinpakorn	2012-13
75.45	Amanda Costner	2005-06
75.53	Emily Powers	2007-08
75.57	Emily Powers	2009-10
75.62	Thanuttra Boonraksasat	2013-14
75.75	Thanuttra Boonraksasat	2010-11
75.87	Amanda Costner	2006-07
75.90	Thanuttra Boonraksasat	2012-13
76.03	Katy Nugent	2010-11
76.31	Minami Levonowich	2013-14
76.33	Chelsey Pryor	2005-06
76.45	Emily Powers	2008-09
76.50	Meghan Potee	2012-13
76.54	Pornvipa Sakdee	2013-14
76.60	Minami Levonowich	2014-15
76.63	Grace Thiry	2010-11
76.67	Thanuttra Boonraksasat	2011-12
76.88	Meghna Bal	2010-11
77.00	Grace Thiry	2009-10
77.30	Katy Nugent	2011-12
77.39	Meghan Potee	2013-14
77.40	Audrey Yowell	2012-13
78.4	Mandy Munsch	1998-99

Active players in bold

Individual Records

LOWEST 18-HOLE TOTALS

Score	Player	Event	Date
63*	Yupaporn Kawinpakorn	Schooner Classic	9/19/15
67	Yupaporn Kawinpakorn	NCAA Regionals	5/7/15
67	Meghan Potee	Edwin Watts/Palmetto	10/24/11
67	Emily Powers	Ron Moore Intercollegiate	9/17/07
67	Amanda Costner	Marilynn Smith	10/10/05
68	Yupaporn Kawinpakorn	Chip-N Club Invitational	10/6/15
68	Ariadna Fonseca Diaz	Chip-N Club Invitational	10/6/15
68*	Yupaporn Kawinpakorn	Schooner Classic	9/21/15
68*	Ariadna Fonseca Diaz	Schooner Classic	9/21/15
68	Pornvipa Sakdee	Big 12 Championship	4/24/15
68	Yupaporn Kawinpakorn	Palmetto Intercollegiate	10/28/14
68	Pornvipa Sakdee	Lady Paladin Invitational	9/21/14
68+	Yupaporn Kawinpakorn	Cardinal Cup	9/16/13
68	Thanuttra Boonraksasat	Baylor Spring Invitational	4/12/11
69*	Ariadna Fonseca Diaz	Schooner Classic	9/19/15
69	Yupaporn Kawinpakorn	Big 12 Championship	4/25/15
69	Yupaporn Kawinpakorn	SMU/DAC Invitational	4/11/15
69	Yupaporn Kawinpakorn	Palmetto Intercollegiate	10/26/14
69	Yupaporn Kawinpakorn	Marilynn Smith Sunflower Invitational	9/8/14
69	Yupaporn Kawinpakorn	Big 12 Championship (2)	4/25-27/14
69	Yupaporn Kawinpakorn	Palmetto Intercollegiate	10/28/13
69	Pornvipa Sakdee	Palmetto Intercollegiate	10/28/13
69	Yupaporn Kawinpakorn	Price's "Give 'Em Five" Intercollegiate	10/8/12
69	Meghan Potee	Price's "Give 'Em Five" Intercollegiate	10/8/12
69	Katy Nugent	Marilynn Smith Sunflower Invitational	9/27/10
69	Emily Powers	Mountain View Collegiate	3/26/07
69	Amanda Costner	Mountain View Collegiate	3/26/07
69	Amanda Costner	Ptarmigan/Ram Fall Classic	9/13/05
69	Chelsey Pryor	Dick McGuire	9/15/04
69	Amanda Costner	Mountain View Collegiate	3/27/04
69	Sue Tessary	Mountain View Collegiate	3/13/99

LOWEST 54-HOLE TOTALS

Score	Player	Event	Dates
211	Yupaporn Kawinpakorn	Big 12 Championship	4/25-27/14
212	Yupaporn Kawinpakorn	Chip-N Club Invitational	10/5-6/15
212	Amanda Costner	Ptarmigan/Ram Fall Classic	9/12-13/05
213	Yupaporn Kawinpakorn	Palmetto Intercollegiate	10/25-27/15
213	Yupaporn Kawinpakorn	NCAA Regionals	5/7-9/15
213	Yupaporn Kawinpakorn	Palmetto Intercollegiate	10/26-28/14
213+	Yupaporn Kawinpakorn	Cardinal Cup	9/16-17/13
213	Yupaporn Kawinpakorn	Price's "Give 'Em Five"	10/9-10/12
213	Emily Powers	Chip-N-Club	9/15-16/09
215	Yupaporn Kawinpakorn	SMU/DAC Invitational	4/10-11/15
215	Yupaporn Kawinpakorn	Ron Moore Women's Intercollegiate	10/10-12/14
216	Pornvipa Sakdee	Big 12 Championship	4/24-26/15
216	Pornvipa Sakdee	Marilynn Smith Sunflower Invitational	9/8-9/14
216	Katy Nugent	Edwin Watts/Palmetto	10/25-26/13
216	Amanda Costner	Lady Razorback Invitational	10/17-18/13
216	Thanuttra Boonraksasat	Challenge at Onion Creek	9/29-30/13
217	Yupaporn Kawinpakorn	Big 12 Championship	4/24-26/15
217	Pornvipa Sakdee	Ron Moore Women's Intercollegiate	10/10-12/14
217	Pornvipa Sakdee	Ron Moore Women's Intercollegiate	10/10-12/14
217	Pornvipa Sakdee	Palmetto Intercollegiate	10/27-28/13
217	Thanuttra Boonraksasat	Challenge at Onion Creek	9/30-10/1/13
217	Chelsey Pryor	Mountain View Intercollegiate	3/25-26/13
217	Meghan Potee	Edwin Watts/Palmetto	10/23-24/12
217	Thanuttra Boonraksasat	Ole Miss Rebel Intercollegiate	4/1-3/11
217	Amanda Costner	Lady Boilermaker	4/9-10/05
218	Ariadna Fonseca Diaz	Chip-N Club Invitational	10/5-6/15
218	Meghan Gockel	Duramed Invitational	3/6-8/09
219	Grace Thiry	Marilynn Smith Invitational	9/27-28/10
219	Meghna Bal	Price's "Give 'Em Five"	10/8-10/09

Active players in bold

* - par-71

+-par-70



Individual Honors

BIG 12 ALL-TOURNAMENT

2004	Amanda Costner	7th
2007	Amanda Costner	1st
2009	Meghan Gockel	T6th
2013	Yupaporn Kawinpakorn	T10th
2014	Yupaporn Kawinpakorn	T2nd
2015	Pornvipa Sakedee	4th
	Yupaporn Kawinpakorn	T5th

BIG 12 FIRST TEAM ALL-CONFERENCE

2006	Amanda Costner
2007	Amanda Costner
2008	Emily Powers
2014	Yupaporn Kawinpakorn

BIG 12 SPORTSPERSON OF THE YEAR

2007	Amanda Costner
------	----------------

WGCA ALL-AMERICAN SCHOLARS

1992	Laura Myers
	Shelly Triplett
2002	Jennifer Bawanan
	Jill MacDonald
2003	Jennifer Bawanan
2004	Jennifer Bawanan
	Chelsey Pryor
2005	Chelsey Pryor
2006	Chelsey Pryor
	Amanda Costner
2007	Meghan Gockel
2008	Meghan Gockel
	Sydney Wilson
2009	Meghna Bal
	Jennifer Clark
	Meghan Gockel
	Sydney Wilson
2010	Meghan Gockel
2011	Meghna Bal
	Jennifer Clark
	Katy Nugent
	Grace Thiry
2012	Gabriella DiMarco
	Katy Nugent
	Meghan Potee
2013	Gabriella DiMarco
	Meghan Potee
2014	Meghan Potee
2015	Michelle Woods

ACADEMIC ALL-BIG 12 CONFERENCE

1997	Lori Lauritsen (First Team)	2009	Jaci Hiatt (First Team)
	Anne Clark (HM)		JoJo Hallenbeck (Second Team)
	Kelly Marney (HM)		Meghna Bal (First Team)
	Missy Russell (HM)		Meghan Gockel (First Team)
1998	Ashely Bishop (First Team)	2010	Jennifer Clark (First Team)
	Jamie Tucker (First Team)		Emily Powers (First Team)
	Beth Reuter (HM)		Grace Thiry (First Team)
	Susan Tessary (HM)		Sydney Wilson (First Team)
1999	Ashely Bishop (First Team)	2011	Meghna Bal (First Team)
	Ashley Lowery (Second Team)		Jennifer Clark (First Team)
2000	Ashely Bishop (First Team)	2012	Meghan Gockel (First Team)
	Carrie Padden (First Team)		Emily Powers (First Team)
	Andi Schultz (First Team)		Grace Thiry (First Team)
	Tiffany Kruggel (First Team)		Sydney Wilson (First Team)
2001	Sarah Mahoney (First Team)	2013	Meghna Bal (First Team)
	Ashely Bishop (Second Team)		Jennifer Clark (First Team)
	Jennifer Bawanan (First Team)		Grace Thiry (First Team)
2002	Tiffany Kruggel (Second Team)	2014	Thanuttra Boonraksasat (Second Team)
	Jennifer Bawanan (First Team)		Maria Jackson (First Team)
	Tiffany Kruggel (First Team)		Katy Nugent (First Team)
2003	Jill MacDonald (First Team)	2015	Meghan Potee (First Team)
	Heather Rose (Second Team)		Audrey Yowell (First Team)
	Jennifer Bawanan (First Team)		Gabriella DiMarco (First Team)
	Chelsey Pryor (First Team)		Meghan Potee (First Team)
2004	Meredith Winkelmann (First Team)	2016	Audrey Yowell (First Team)
	Amanda Costner (First Team)		Yupaporn Kawinpakorn (First Team)
	Chelsey Pryor (First Team)		Minami Levonowich (First Team)
2005	Meredith Winkelmann (First Team)	2017	Meghan Potee (First Team)
	Amanda Costner (First Team)		Gabriella DiMarco (First Team)
	Annie Giangrosso (First Team)		Carly Humes (First Team)
2006	Chelsey Pryor (First Team)	2018	Yupaporn Kawinpakorn (First Team)
	Meredith Winkelmann (First Team)		Minami Levonowich (First Team)
	Amanda Costner (First Team)		Michelle Woods (First Team)
	Annie Giangrosso (First Team)		
2007	Annie Giangrosso (First Team)	2019	
	Meghan Gockel (First Team)		



Amanda Costner
2007 Big 12 Medalist



Meghan Potee
2012, 2013, 2014
Academic All-Big 12



Meghan Gockel
2008, 2009, 2010
Academic All-Big 12



Emily Powers
2009, 2010
Academic All-Big 12

Kwq

Ks

Mj

Rb

Team Records

KANSAS TEAM TITLES

Year	Tournament	Team Score
1978	Wichita State Invitational	332-329--661
1983	Kansas Mini-Invitational	--
1986	North-South Classic	331-312-163--806
1986	Kansas Invitational (Kansas A)	321-313-320--954
1989	Snowbird Intercollegiate	322-305--627
1989	Shocker Classic (Kansas A)	326-325-326--977
1990	Big Eight Championship	312-311-313--936
1991	Alabama Intercollegiate	309-314-318--941
1992	Azalea Seahawk Invitational	316-307-297--920
1992	Yale Intercollegiate	321-333--654
1994	Aztec Invitational	334-334-333--1012
1997	SW Missouri State Invitational	321-336-348--1005
1997	Sunflower Invitational	315-317-300--932
2000	Kansas vs. Coastal Carolina	317--317
2000	Kansas vs. College of Charleston	308--308
2004	Sunflower Invitational	311-319-316--946
2006	Mountain View Collegiate	297-297-290--884
2006	Sunflower Invitational	304-306-307--917
2007	Marilynn Smith Invitational	302-298--600
2009	Duramed Collegiate Invitational	294-295-294--883
2010	Marilynn Smith Invitational	313-290-300--903
2012	Rio Verde Collegiate Invitational	312-297-291--900
2012	Marilynn Smith Sunflower Invitational	303-298-305--906
2012	Price's "Give Em' Five" Intercollegiate	294-289-288--871
2013	Jayhawk-Cornhusker Challenge	317--317
2013	Marilynn Smith Sunflower Invitational	303-299-308--910
2013	Palmetto Intercollegiate	297-295-284--876

* - par-71

+ - par-70

KANSAS TEAM LOWEST ROUNDS

Year	Tournament	Score	Round
2015	Schooner Fall Classic*	281	Second
2013	Palmetto Intercollegiate	284	Third
2015	Schooner Fall Classic*	285	First
2013	Cardinal Cup+	286	Second
2007	Mountain View Collegiate	286	Third
2011	Edwin Watts/Palmetto Intercollegiate	287	Third
2012	Price's "Give Em' Five" Intercollegiate	288	Third
2012	Price's "Give Em' Five" Intercollegiate	289	Second
2010	Marilynn Smith Invitational	290	Second
2014	NCAA Regionals	290	Second
2007	Mountain View Collegiate	291	Second
2013	Sir Terrapin Pizza Challenge	292	First
2014	NCAA Championship	292	Fourth
2015	Chip-N Club Invitational	292	Third
2014	NCAA Championship	293	Second
2013	Indiana Invitational	293	Third
2005	Ptarmigan Ram Fall Classic	293	Second
1999	Mountain View Collegiate	293	Second
2013	2013 Challenge at Onion Creek	294	Second
2009	Duramed Collegiate Invitational*	294	Third
2009	Edwin Watts/Palmetto Intercollegiate	294	Third
2007	Susie Maxwell Berning Classic	294	Second
1999	Utah Dixie Classic	294	First
2014	3M Lady Jaguar Intercollegiate	294	Second
2014	2014 Briar's Creek Invitational	294	Third

KANSAS TEAM LOWEST 54 HOLES

Year	Tournament	Score	Finish
2012	Price's "Give Em' Five" Intercollegiate	871	First
2007	Mountain View Collegiate	874	T-Fourth
2013	Palmetto Intercollegiate	876	First
2013	Challenge at Onion Creek	876	Fourth
2013	Cardinal Cup+	881	Second
2014	Ron Moore Women's Intercollegiate	884	Second
2006	Mountain View Collegiate	884	First
2007	Susie Maxwell Berning Classic	884	Fourth
2014	Big 12 Championship	886	T- Fourth
2010	Edwinn Watts/Palmetto Intercollegiate	887	Fourth



1990 Big Eight Champions

Front row (left to right): Carol Pfaff, Kim Herrelson, Cathy Keinbeck, Trisa Leibig

Back row (left to right): Lisa Luigs (assistant coach), Sherri Atchison, Laura Martin, Laura Myers, Donna Lowen, Shelly Triplett, Brad Demo (head coach)

NCAA Championship History

1990 NCAA Championships

Arthur Hills Golf Course // Hilton Head, S.C. // May 23-26

	Rd 1	Rd 2	Rd 3	Rd 4	Total
14. KANSAS	323	324	310	313	1,270
T52. Laura Myers	82	78	86	80	316
T52. Sherri Atchison	84	78	80	74	316

1993 NCAA Championships

University of Georgia Golf Course // Athens, Ga. // May 26-29

	Rd 1	Rd 2	Rd 3	Rd 4	Total
T15. Holly Reynolds	77	72	76	74	299

2014 NCAA Championships

Tulsa Country Club // Tulsa, Okla. // May 20-23

	Rd 1	Rd 2	Rd 3	Rd 4	Total
24. KANSAS	323	324	310	313	1,270
T84. Yupaporn Kawinpakorn	83	71	75	70	299
T90. Thanuttra Boonraksasat	76	74	77	73	300
T94. Minami Levonowich	74	71	80	77	302
T122. Pornvipa Skadee	89	77	74	72	312
126. Meghan Potee	80	84	77	85	326



2014 NCAA Central Regional
Karsten Creek Golf Club
Stillwater, Oklahoma

NCAA Regional History

1993 NCAA West Regional

Randolph North Golf Course // Tucson, Ariz. // May 13-15

	Rd 1	Rd 2	Rd 3	Total
T9. Holly Reynolds	71	70	74	215

1994 NCAA West Regional

New Mexico Championship Golf Course // Albuquerque, N.M. // May 13-14

	Rd 1	Rd 2	Rd 3	Total
T15. Holly Reynolds	74	74	74	222

2006 NCAA Central Regional

Traditions Golf Club // Bryan, Texas // May 11-13

	Rd 1	Rd 2	Rd 3	Total
T26. Amanda Costner	78	76	75	229

2008 NCAA West Regional

Lincoln Hills Golf Club // Lincoln, Calif. // May 8-10

	Rd 1	Rd 2	Rd 3	Total
T56. Emily Powers	80	77	71	228

2014 NCAA Central Regional

Karsten Creek Golf Club // Stillwater, Okla. // May 8-10

	Rd1	Rd 2	Rd 3	Total
T5. KANSAS	309	290	300	899
T19. Minami Levonowich	77	72	73	222
T24. Yupaporn Kawinpakorn	75	69	80	224
T45. Thanuttra Boonraksasat	81	74	74	229
T51. Pornvipa Sakdee	77	75	79	231
T66. Meghan Potee	80	79	74	233

2015 NCAA West Regional

Dominion Golf Club // San Antonio, Tex. // May 7-9

	Rd 1	Rd 2	Rd 3	Total
T10. Yupaporn Kawinpakorn	67	71	75	213

KU INDIVIDUAL RECORDS IN THE NCAA

Low Round	67, Yupaporn Kawinpakorn (2015, Rd.1)
Low 54-hole Total.....	213, Yupaporn Kawinpakorn (2015)
Best Finish (Regional)	T9, Holly Reynolds (1993)
Best Finish (Championship).....	T15, Holly Reynolds (1993)



Conference Championship History

BIG EIGHT CHAMPIONSHIP RESULTS

Year	Champion	Medalist	KU Finish	Top KU Finisher
1976	Nebraska, 684	Lindsey Wetzell, Oklahoma (164)	2/6 (701)	
1977	Oklahoma State, 671	Patty Zimmer, Oklahoma State (158)	2/6 (697)	
1978	Oklahoma, 653	Alicia Ogrin, Oklahoma State (154)	3/6 (663)	
1979	Oklahoma State, 949	Alicia Ogrin, Oklahoma State (232)	6/7 (1,004)	
1980	Oklahoma State, 930	Val Skinner, Oklahoma State (225)	6/7 (1,001)	
1981	Oklahoma, 922	Dorea Mitchell, Oklahoma (227)	6/7 (329-335-344--1,008)	T11. Patty Coe (80-79-81--241)
1982	Oklahoma State, 917	Val Skinner, Oklahoma State (216)	6/7 (338-341-331--1,010)	T12. Bev Boozer (83-79-86--248)
1983	Nebraska, 953	Janice Burba, Oklahoma State (233)	4/7 (1,009)	T8. Patty Coe (241)
1984	Oklahoma State, 934	Robin Hood, Oklahoma State (224)	6/7 (352-340-347--1,039)	T16. Brenda Sanders (82-83-87--252)
1985	Oklahoma State, 934	Lisa Stone, Oklahoma State (231)	3/7 (324-337-347--1,008)	10. Tina Gnewuch (79-82-88--249)
1986	Oklahoma State, 924	Robin Hood, Oklahoma State (220)	6/7 (330-334-333--997)	13. Susan Pekar (81-81-78--240)
1987	Oklahoma State, 912	Eva Dahloff, Oklahoma State (228)	4/7 (342-320-314--976)	15. Tina Gnewuch (86-80-76--242)
1988	Oklahoma State, 944	Eva Dahloff, Oklahoma State (234)	4/7 (1,009)	11. Susan Pekar (82-81-87--250)
1989	Oklahoma State, 935	Eva Dahloff, Oklahoma State (229)	5/7 (329-324-337--990)	T11. Sherri Atchison (80-83-76--241)
1990	KANSAS, 936	Marnie McGuire, Oklahoma State (230)	1/7 (312-311-313--936)	2. Donna Lowen (80-76-75--231)
1991	Oklahoma, 943	Cathy Stevens, Oklahoma (232)	4/7 (335-324-322--981)	9. Shelly Triplett (81-75-81--237)
1992	Oklahoma State, 914	Arantza Sison, Oklahoma State (220)	3/7 (323-311-317--951)	T6. Holly Reynolds (82-76-77--235)
1993	Iowa State, 945	Shelley Finnstad, Iowa State (232)	15/8 (333-340-344--1,017)	T8. Holly Reynolds (78-83-80--241)
1994	Oklahoma State, 919	Charlotta Eliasson, Oklahoma State (221)	6/8 (325-322-331--978)	10. Holly Reynolds (76-75-81--232)
1995	Oklahoma State, 937	Amy Weeks, Oklahoma State (226)	6/8 (337-339-339--1,015)	4. Michelle Uher (81-78-79--238)
1996	Oklahoma State, 946	Rachelle Tacha, Nebraska (227)	7/8 (353-342-330--1,025)	T21. Missy Russell (89-86-76--251)

BIG 12 CHAMPIONSHIP RESULTS

Year	Champion	Medalist	KU Finish	Top KU Finisher
1997	Texas, 924	Heather Bowie, Texas (212)	7/12 (311-320-328--959)	T16. Missy Russell (77-82-80--239)
1998	Texas A&M, 919	Isabelle Rosberg, Texas A&M (225)	9/12 (329-315-328--972)	T39. Mandy Munsch (80-83-91--244)
1999	Oklahoma State, 906	Maria Boden, Oklahoma State (219)	11/12 (310-314-327--951)	T16. Mandy Munsch (74-79-77--230)
2000	Oklahoma, 916	Amelia Moses, Missouri (222)	12/12 (327-321-330--978)	T25. Sarah Mahoney (80-78-78--236)
2001	Oklahoma State, 925	Maria Boden, Oklahoma State (227)	12/12 (358-324-255--1,007)	T29. Heather Rose (82-79-83--244)
2002	Oklahoma State, 909	Emma Zackrisson, Oklahoma St. (223)	12/12 (332-321-336--989)	T32. Heather Rose (89-78-77--238)
2003	Oklahoma State, 909	Sarah Sasse, Nebraska (220)	11/12 (325-322-326--973)	T22. Jennifer Bawanan (80-79-77--235)
2004	Texas, 952	Annie Thruman, Oklahoma State (137)	8/12 (305-312--617)	T7. Amanda Costner (75-73--148)
2005	Oklahoma State, 900	Annie Thurman-Young, Okla. St. (212)	9/12 (311-331-310--952)	T26. Chelsey Pryor (73-81-81--235)
2006	Texas A&M, 899	Ashley Knoll, Texas A&M (215)	11/12 (316-318-321--955)	T14. Amanda Costner (79-78-74--231)
2007	Texas A&M, 911	AMANDA COSTNER, KANSAS (221)	9/12 (312-314-319--945)	1. Amanda Costner (71-73-77--221)
2008	Oklahoma State, 912	Jaclyn Sweeny, Oklahoma State (225)	10/12 (333-325-340--998)	T29. Emily Powers (80-82-85--247)
2009	Oklahoma State, 909	Kendall Dye, Oklahoma (225)	5/12 (312-310-323--945)	T6. Meghan Gockel (75-76-79--230)
		Ashley Freeman, Texas A&M (225)		
2010	Texas A&M, 896	Caroline Hedwall, Okla. St. (210)	12/12 (314-312-312--938)	T28. Emily Powers (78-77-76--231)
2011	Texas, 872	Madison Pressel, Texas (208)	11/12 (302-305-304--911)	T23. Thanuttra Boonraksasat (76-73-75--224)
2012	Oklahoma, 904	Chirapat Jao-Javanil, Oklahoma (220)	10/10 (338-307-306--951)	T30. Thanuttra Boonraksasat (83-75-78--236)
				T30. Audrey Yowell (78-84-74--236)
2013	Oklahoma State, 905	Lauren Taylor, Baylor (213)	8/9 (322-304-315--941)	T10. Yupaporn Kawinpakorn (76-77-76--229)
2014	Oklahoma, 861	Chirapat Jao-Javanil (209)	T4/9 (297-295-294--886)	T2. Yupaporn Kawinpakorn (69-73-69--211)
2015	Baylor, 867	Kenzie Neisen-Oklahoma State (212)	8th/9 (301-301-304--906)	4. Pornvipa Sakdee (68-74-74--216)

Year-By-Year Results (Since 1980)

Date	Tournament	Location	Result	Top KU Individual
FALL 1980				
Sept. 15-17	Susie Maxwell Berning Classic	Oklahoma City, Okla.	21/24 (325-346-339—1,010)	Patty Coe – 247
Sept. 26-27	Iowa State Invitational	Ames, Iowa	7/13 (327-333—660)	Sally Donnini – T32/166
Oct. 9-10	Kansas Invitational	Lawrence, Kan.	3/6 (335-355—690)	Cathy Eyre – T10/168
SPRING 1981				
April 9-12	Tiger Classic	Columbia, Mo.	4/6 (1,001)	Patty Coe – 239
April 19-22	Sooner Invitational	Norman, Okla.	8/10 (1,018)	Sarah Burgess – 246
April 27-29	Big Eight Championship	Lawrence, Kan.	6/7 (329-335-344—1,008)	Patty Coe – T11/240
FALL 1981				
Sept. 14-16	Susie Maxwell Berning Classic	Oklahoma City, Okla.	21/21 (323-338-335—996)	Bev Boozer – T74/245
Sept. 21-22	Iowa State Invitational	Ames, Iowa	9/11 (331-321-338—990)	Bev Boozer – 150
Oct. 16-18	Mizzou Invitational	Columbia, Mo.	6/10 (327-328-345—1,000)	Lisa Bradley – 11/242
Oct. 22-23	Kansas Invitational	Lawrence, Kan.	4/6 (338-330-324—992)	Lisa Bradley – 3/237
SPRING 1982				
March 18-20	Tiger Tangle	Huntsville, Tex.	6/7 (1,080)	Bev Boozer – 279
April 2-4	Missouri Invitational	Springfield, Mo.	3/5 (1,036)	Bev Boozer – 254
April 26-28	Big Eight Championship	Ames, Iowa	6/7 (336-336-343—1,015)	Bev Boozer – T12/248
May 1-2	Stephens Invitational	Columbia, Mo.	4/8 (916)	Bev Boozer – T3/224
FALL 1982				
Sept. 13-15	Susie Maxwell Berning Classic	Oklahoma City, Okla.	18/18 (327-335-344—1,006)	Bev Boozer – T42/238
Sept. 30-Oct. 2	Iowa State Invitational	Ames, Iowa	6/9 (347-321-352—1,020)	Bev Boozer – T13/254
Oct. 14-15	Kansas Invitational	Lawrence, Kan.	4/7 (336-336-343—1,015)	Bev Boozer – 2/236
Oct. 21-23	Missouri Invitational	Columbia, Mo.	5/6 (322-342-325—999)	Patty Coe – 245
SPRING 1983				
March 31-April 1	Missouri Invitational	Columbia, Mo.	5/7 (333)	Patty Coe – T3/77
April 18	Kansas Mini-Invitational	Lawrence, Kan.	1/8	Bev Boozer – 79
April 25-27	Big Eight Championship	Oklahoma City, Okla.	t4/8 (1,009)	Patty Coe – 241
May 1	Stephens Invitational	Columbia, Mo.	4/6 (323)	Patty Coe – 117
FALL 1983				
Sept. 12-14	Susie Maxwell Berning Classic	Oklahoma City, Okla.	16/16 (342-346-344—1,032)	Solveig Thorsteindottir – 255
Sept. 30-Oct. 2	Lady Northern Intercollegiate	Iowa City, Iowa	17/19 (337-334-331—1,002)	Sue Pekar – 241
Oct. 9-10	Missouri Invitational	Columbia, Mo.	4/6 (353-336-334—1,023)	Brenda Sanders – 11/248
Oct. 17-18	Kansas Invitational	Lawrence, Kan.	4/8 (339-341-340—1,020)	Brenda Sanders – 10/246
SPRING 1984				
April 3	Big Red Invitational	Norman, Okla.	8/8 (352-349-359—1,060)	LeeAnn Loeffelholz – 24/255
April 16-17	Kansas State Invitational	Manhattan, Kan.	4/6 (355-336-342—1,033)	Maureen Kelly – T10/252
April 23-25	Big Eight Championship	Columbia, Mo.	6/7 (352-340-347—1,039)	Brenda Sanders – T16/252
April 28-29	Stephens College Invitational	Columbia, Mo.	4/5 (337-349-335—1,021)	Solveig Thorsteindottir – T9/249
FALL 1984				
Sept. 10-12	Susie Maxwell Berning Classic	Norman, Okla.	6/8 (335-315-332—984)	Maureen Kelly – T5/236
Sept. 16-18	Oklahoma State Invitational	Stillwater, Okla.	13/14 (360-345-357—1,062)	Maureen Kelly – T54/258
Sept. 28-29	Northern Iowa Invitational	Cedar Falls, Iowa	4/6 (331-319-318—968)	Maureen Kelly – T6/237
Oct. 15-16	Kansas Invitational	Lawrence, Kan.	2/8 (327-338—665)	Tina Gnewuch – 3/161
Oct. 20-21	Missouri Invitational	Columbia, Mo.	4/9 (337-335-323—995)	Tina Gnewuch – T3/241

Year-By-Year Results (Since 1980)

Date	Tournament	Location	Result	Top KU Individual
SPRING 1985				
March 31	South Carolina Invitational	Columbia, S.C.	14/14 (337-342-332—1,011)	Marilee Scheid – 53/251
April 8-9	Big Red Invitational	Norman, Okla.	6/10 (338-335-337—1,010)	Maureen Kelly – T11/246
April 12-13	Illini Spring Classic	Champaign, Ill.	11/16 (342-352-352—1,046)	Brenda Sanders - T26/254
April 22-23	Big Eight Championship	Manhattan, Kan.	3/7 (324-337-347—1,008)	Tina Gnewuch - 10/249
April 25-27	Washington Gearhart Invitational	Gearhart, Ore.	4/4 (331-350—681)	Maureen Kelly – 9/165
FALL 1985				
Sept. 20-22	Lady Seminole Invitational	Tallahassee, Fla.	17/19 (337-324-330—991)	Tina Gnewuch – T75/246
Sept. 26-28	Northern Iowa Invitational	Cedar Falls, Iowa	3/8(334-327-328—989)	Maureen Kelly – 7/244
Oct. 3-6	Memphis Invitational	Memphis Tennessee	15/17 (334-324-335—993)	Tina Gnewuch – T250
				Marilee Scheid – T250
Oct. 12-15	Beacon Woods Invitational	Tampa, Fla.	5/7 (334-312-321—967)	Maureen Kelly - 234
Oct. 21-22	Kansas Invitational	Lawrence, Kan.		
	Kansas A		4/8 (324-318-330—972)	Marilee Scheid – T10/241
	Kansas B		6/8 (333-333-334—1,000)	Sue Pekar – 14/243
SPRING 1986				
March 13-15	North-South Classic	Orlando, Fla.	1/6 (331-312-163—806)	Sue Pekar – T2/195
March 21-22	Rayburn Classic	Rayburn, Tex.	3/4 (338-347-338—1,023)	Marilee Scheid – 250
March 29-30	South Carolina Invitational	Columbia, S.C.	13/13 (345-331-336—1,012)	Tina Gnewuch – T48/246
April 7-8	Susie Maxwell Berning Classic	Oklahoma City, Okla.	9/12 (350-327-346—1,023)	Tina Gnewuch – T19/251
April 14-15	Kansas State/Pepsi Women's Classic	Manhattan, Kan.	6/8 (371-340—711)	Tina Gnewuch – T8/171
April 28-29	Big Eight Championship	Lincoln, Neb.	6/7 (330-334-333—997)	Sue Pekar – 13/240
FALL 1986				
Sept. 12-13	Iowa State Invitational	Ames, Iowa	5/10 (331-329-335—995)	Sue Pekar – T7/240
Sept. 10-12	All College Kickoff	Edmond, Okla.	10/12(334-317-318—969)	Sue Pekar – T30/241
Sept. 26-28	Lady Seminole Invitational	Tallahassee, Fla.	9/17 (315-319-330—964)	Sue Pekar – T9/232
Oct. 3-5	Beacon Woods Invitational	Tampa, Fla.	9/12 (318-320-325—963)	Sue Pekar – 232
Oct. 20-21	Kansas Invitational	Lawrence, Kan.		
	Kansas A		1/8 (321-313-320—954)	Sue Pekar – T4/236
	Kansas B		3/8 (318-323-318—959)	Marilee Scheid – T4/236
SPRING 1987				
March 18-19	Illini Spring Break Classic	Tampa, Fla.	3/13 (305-314—619)	Sue Pekar – T7/152
March 29-31	Peggy Kirk Bell Invitational	Winter Springs, Fla.	6/10 (345)	Sue Pekar - 84
April 6-7	Susie Maxwell Berning Classic	Norman, Okla.	7/14 (338-338-334—1,010)	Tina Gnewuch – T22/253
April 11-12	Missouri Invitational	Columbia, Mo.	3/12 (321-314—635)	Sue Pekar – 1/150
April 18-19	Lady Buckeye Invitational	Columbus, Ohio	7/14 (322-317-319—951)	Tina Gnewuch – T8/226
April 27-28	Big Eight Championship	Oklahoma City, Okla.	4/7 (342-320-314—976)	Sue Pekar – T12/238
FALL 1987				
Sept. 4-5	Iowa State Cyclone Classic	Ames, Iowa	3/9 (325-323-332—980)	Tina Gnewuch – T5/237
Sept. 12-13	Iowa Invitational	Iowa City, Iowa	6/8 (327-321-330—978)	Sue Pekar – 8/27
Oct. 9-11	Beacon Woods Invitational	Bayonet Point, Fla.	13/14 (337-327-315—979)	Sue Pekar – 52/244
Oct. 19-20	Kansas Invitational	Lawrence, Kan.	3/8 (344-321-338—1,003)	Tina Gnewuch – 2/241
SPRING 1988				
March 19-20	Peggy Kirk Bell Invitational	Orlando, Fla.	3/16 (320-333-331—984)	Sue Pekar – T6/237
March 29-30	Illini Spring Break Classic	Tampa, Fla.	4/8 (317-307-320—944)	Sue Pekar – 2/226
April 11-12	Nebraska Invitational	Lincoln, Nebraska	3/9 (320-328-318—966)	Sue Pekar – 2/231
April 25-26	Big Eight Championship	Stillwater, Okla.	4/7 (335-325-349—1,009)	Sue Pekar – 11/250

FALL 1988

Sept. 2-3	Iowa State Cyclone Classic	Ames, Iowa	3/9 (317-333—650)	Laura Myers – 4/160
Sept. 23-24	Air Force Academy Classic	Colorado Springs, Colo.	2/10 (346-332-318—996)	Shelly Triplett – 2/242
Sept. 30-Oct. 1	Wichita State Shocker Classic	Wichita, Kan.	1/7 (308-316-318—942)	Laura Myers – T3/231
	Kansas A		3/7 (339-333-334—1,006)	Donna Lowen – 6/233
	Kansas B		1/5 (310-314—624)	Shelly Triplett – T1/155
Nov. 2-4	Texas Invitational	El Paso, Texas		Sherri Atchison – T1/155

SPRING 1987

March 18-19	Illini Spring Break Classic	Tampa, Fla.	3/13 (305-314—619)	Sue Pekar – T7/152
March 29-31	Peggy Kirk Bell Invitational	Winter Springs, Fla.	6/10 (345)	Sue Pekar - 84
April 6-7	Susie Maxwell Berning Classic	Norman, Okla.	7/14 (338-338-334—1,010)	Tina Gnewuch – T22/253
April 11-12	Missouri Invitational	Columbia, Mo.	3/12 (321-314—635)	Sue Pekar – 1/150
April 18-19	Lady Buckeye Invitational	Columbus, Ohio	7/14 (322-317-319—951)	Tina Gnewuch – T8/226
April 27-28	Big Eight Championship	Oklahoma City, Okla.	4/7 (342-320-314—976)	Sue Pekar – T12/238

FALL 1987

Sept. 4-5	Iowa State Cyclone Classic	Ames, Iowa	3/9 (325-323-332—980)	Tina Gnewuch – T5/237
Sept. 12-13	Iowa Invitational	Iowa City, Iowa	6/8 (327-321-330—978)	Sue Pekar – 8/27
	All-College Kickoff Classic	Edmond, Okla.	7/10 (334-319-319—972)	Tina Gnewuch – T13/238
Oct. 9-11	Beacon Woods Invitational	Bayonet Point, Fla.	13/14 (337-327-315—979)	Sue Pekar – 52/244
Oct. 19-20	Kansas Invitational	Lawrence, Kan.	3/8 (344-321-338—1,003)	Tina Gnewuch – 2/241

SPRING 1988

March 19-20	Peggy Kirk Bell Invitational	Orlando, Fla.	3/16 (320-333-331—984)	Sue Pekar – T6/237
March 29-30	Illini Spring Break Classic	Tampa, Fla.	4/8 (317-307-320—944)	Sue Pekar – 2/226
April 11-12	Nebraska Invitational	Lincoln, Nebraska	3/9 (320-328-318—966)	Sue Pekar – 2/231
April 25-26	Big Eight Championship	Stillwater, Okla.	4/7 (335-325-349—1,009)	Sue Pekar – 11/250

FALL 1988

Sept. 2-3	Iowa State Cyclone Classic	Ames, Iowa	3/9 (317-333—650)	Laura Myers – 4/160
Sept. 23-24	Air Force Academy Classic	Colorado Springs, Colo.	2/10 (346-332-318—996)	Shelly Triplett – 2/242
Sept. 30-Oct. 1	Wichita State Shocker Classic	Wichita, Kan.	1/7 (308-316-318—942)	Laura Myers – T3/231
	Kansas A		3/7 (339-333-334—1,006)	Donna Lowen – 6/233
	Kansas B		1/5 (310-314—624)	Shelly Triplett – T1/155
Nov. 2-4	Texas Invitational	El Paso, Texas		Sherri Atchison – T1/155

SPRING 1989

March 5-6	BYU-Dixie Classic	St. George, Utah	3/12 (308-307-311—926)	Shelly Triplett – 2/220
March 13-14	Snowbird Intercollegiate	Sebring, Fla.	1/8 (322-305—627)	Laura Meyers – T2/155
				Shelly Triplett – T2/155
March 24-25	USF Summerfield Invitational	Tampa, Fla.	6/10 (325-325-316—966)	Laura Myers – 13/237
April 8-9	Lady Paladin Golf Tournament	Greenville, S.C.	8/12 (330)	Laura Myers – T8/78
April 17-18	Nebraska Invitational	Lincoln, Neb.	2/6 (329-308-318—955)	Donna Lowen - 233
April 24-25	Big Eight Championship	Ames, Iowa	5/7 (329-324-327—990)	Sherri Atchison – T11/243

FALL 1989

Sept. 15-17	Roadrunner Invitational	Las Cruces, N.M.	3/12 (318-318-317—953)	Sherri Atchison – T8/236
				Laura Myers – T8/236
Sept. 23-24	All-College Kickoff	Stillwater, Okla.	2/11 (329-330-313—972)	Donna Lowen – T4/238
Oct. 2-3	Shocker Classic	Wichita, Kan.	1/7 (326-325-326—977)	Sherri Atchison – 2/241
	Kansas A		5/7 (1081)	Trisa Leibig – 11/258
	Kansas B			Sherri Atchison – T8/230
Nov. 5-6	Lamar Cardinal Invitational	Beaumont, Texas	5/10 (320-309-312—941)	

Year-By-Year Results (Since 1980)

Date	Tournament	Location	Result	Top KU Individual
SPRING 1990				
March 5-6	Utah Dixie Classic	St. George, Utah	4/18 (314-333-313—960)	Laura Myers – 16/240
March 12-13	Peggy Kirk Bell Invitational	Winter Park, Fla.	4/17 (311-310-311—932)	Donna Lowen – 4/226
April 2-3	Susie Maxwell Berning Classic	Norman, Okla.	2/12 (331-318-308—957)	Laura Myers – T4/237
April 13-15	Azalea Festival Tournament	Hampstead, N.C.	2/6 (316-310-308—934)	Donna Lowen – 3/229
April 23-24	Big Eight Championship	Lawrence, Kan.	1/7 (312-311-313—936)	Donna Lowen – 2/231
May 23-26	NCAA Championship	Columbia, S.C.	14/17 (323-324-310-313—1,270)	Laura Myers – T52/316 Sherri Atchison – T52/316
FALL 1990				
Sept. 16-18	Roadrunner Invitational	Las Cruces, N.M.	5/12 (318-311-322—951)	Shelly Triplett – 231
Oct. 15-17	Edean Ihlanfeldt Invitational	Seattle, Wash.	4/15 (327-324-314—965)	Laura Myers – T9/237
Nov. 16-18	Palmetto Dunes Collegiate	Hilton Head, S.C.	11/12 (323-317-325—965)	Shelly Triplett – T32/238
SPRING 1991				
March 4-5	Utah Dixie Classic	St. George, Utah	4/19 (317-320-335—972)	Laura Myers – 11/241
March 11-12	Peggy Kirk Bell Invitational	Oviedo, Fla.	7/19 (328-331-317—976)	Laura Myers – T8/238
April 6-7	Earl Steward Lady Mustang	Dallas, Texas	8/12 (317-321-311—949)	Laura Myers – T11/229
April 12-14	Azalea/Seahawk Invitational	Hampstead, N.C.	4/13 (326-316-314—956)	Laura Myers – T4/233
April 29-30	Big Eight Championship	Columbia, Mo.	4/7 (335-324-322—981)	Shelly Triplett – 9/237
FALL 1991				
Sept. 14-15	Minnesota Invitational	Minneapolis, Minn.	3/9 (312-315—627)	Laura Myers – 2/153
Sept. 26-28	Dick McGuire Invitational	Albuquerque, N.M.	6/18 (320-313-314—947)	Laura Myers – T12/233 Holly Reynolds – T12/233
Oct. 6-8	Alabama Intercollegiate	Tuscaloosa, Ala.	1/9 (309-314-318—941)	Shelly Triplett – 1/226
Oct. 14-16	Edean Ihlanfeldt Invitational	Redmond, Wash.	5/15 (326-305-319—950)	Laura Myers – T14/235
SPRING 1992				
March 9-10	Utah Dixie Classic	St. George, Utah	2/18 (318-317-309—944)	Laura Myers – 1/226
March 27-29	South Carolina Invitational	Columbia, S.C.	10/14 (318-311-325—954)	Shelly Triplett – T13/234
April 10-12	Azalea Seahawk Invitational	Wilmington, N.C.	1/9 (316-307-297—920)	Holly Reynolds – 1/220
April 27-28	Big Eight Championship	Manhattan, Kan.	3/7 (323-311-317—951)	Holly Reynolds – T6/235
FALL 1992				
Sept. 11-13	Roadrunner Invitational	Las Cruces, N.M.	T7/14 (334-325-332—991)	Holly Reynolds – T2/228
Sept. 26-27	Cyclone Classic	Ames, Iowa	3/11 (331-336—667)	Holly Reynolds – 1/156
Oct. 3-4	Yale Intercollegiate	New Haven, Conn.	1/10 (321-333—654)	Holly Reynolds – 1/153
Oct. 12-13	Shocker Fall Classic	Andover, Kan.	2/10 (334-330-347—1,011)	Holly Reynolds – 1/234
SPRING 1993				
March 8-9	Utah Dixie Classic	St. George, Kan.	T12/15 (326-324-324—974)	Holly Reynolds – 1/224
March 26-28	Lady Gamecock Classic	Columbia, S.C.	12/18 (319-331-323—973)	Holly Reynolds – T13/230
April 3-4	Indiana Invitational	Bloomington, Ind.	1014 (336-349—685)	Holly Reynolds – T5/158
April 11-13	Susie Maxwell Berning Classic	Norman, Okla.	8/11 (338-313-332—983)	Holly Reynolds – 6/232
April 25-26	Big Eight Championship	Lincoln, Neb.	T5/7 (333-340-344—1,017)	Holly Reynolds – T8/241
May 13-15	NCAA West Regional	Tuscon, Ariz.	No team participation	Holly Reynolds – T9/215
May 26-29	NCAA Championships	Athens, Ga.	No team participation	Holly Reynolds – T15/299
FALL 1993				
Sept. 10-12	Roadrunner Invitational	Las Cruces, N.M.	11/16 (341-338-331—1,010)	Holly Reynolds – T7/230
Sept. 26	Hawkeye Invitational	Iowa City, Iowa	3/10 (312—312)	Holly Reynolds – T4/75
Oct. 1-2	OSU Nike Invitational	Corvallis, Ore.	5/13 (318-315-322—955)	Holly Reynolds – T2/223
Oct. 18-19	Jayhawk Invitational	Lawrence, Kan.	4/9 (326-336-327—989)	Holly Reynolds – T2/226
Nov. 5-7	Texas A&M Bookstore Memorial	College Station, Texas	12/17 (335-335-338—1,008)	Holly Reynolds – T8/240

SPRING 1994

March 7-8	Utah Dixie Classic	St. George, Utah	9/19 (322-316-321—959)	Holly Reynolds – 2/220
March 24-25	Aztec Invitational	Santee, Calif.	1/5 (334-335-333—1,012)	Holly Reynolds – 1/227
April 2-3	Indiana Invitational	Bloomington, Ind.	9/18 (317-319-338—974)	Holly Reynolds – 1/223
April 11-12	Susie Maxwell Berning Classic	Norman, Okla.	5/12 (324-327-330—981)	Holly Reynolds – T6/237
April 25-26	Big Eight Championship	Oklahoma City, Okla.	6/7 (325-322-331—978)	Holly Reynolds – 10/232
May 13-14	NCAA West Regional	Albuquerque, N.M.	No team participation	Holly Reynolds – T15/222

FALL 1994

Sept. 9-11	Roadrunner Invitational	Las Cruces, N.M.	9/17 (331-323-314—968)	Missy Russell – T22/237
Sept. 24-25	Spartan Fall Invitational	East Lansing, Mich.	9/21 (329-324—653)	Michelle Uher – T15/158
Oct. 3-4	Nike Invitational	Corvallis, Ore.	6/16 (329-328-316—973)	Lynn Williamson – T27/238
Oct. 17-18	Sunflower Invitational	Hutchinson, Kan.	6/11 (350-344-335—1,029)	Michelle Uher – T15/253

SPRING 1995

March 6-7	Utah Dixie Classic	St. George, Utah	10/18 (321-327—648)	Michelle Uher – T28/160
March 20-22	Lady Bronc Classic	Harlingen, Texas	5/9 (345-335-334—1,014)	Ann Holbrook – T9/250
March 24-25	Texas A&M Bookstore Memorial	College Station, Texas	T4/17 (321-317-317—955)	Missy Russell – T9/234
April 1-2	Indiana Invitational	Bloomington, Ind.	T4/15 (313-320-325—958)	Missy Russell – T4/231
April 10-11	Susie Maxwell Berning Classic	Norman, Okla.	5/12 (326—326)	Michelle Uher – 2/75
April 24-25	Big Eight Championship	Stillwater, Okla.	6/8 (337-339-339—1,015)	Michelle Uher – 4/238

FALL 1995

Sept. 9-10	Minnesota Invitational	Minneapolis, Minn.	5/11 (323-326—649)	Lori Lauritsen – T6/158
Sept. 25-26	Northwest Women's Collegiate	Corvallis, Ore.	12/18 (326-312-327—965)	Mandy Munsch – T21/264
Oct. 7-8	Lady Buckeye Fall Invitational	Columbus, Ohio	5/13 (322-340-324—986)	Mandy Munsch – 8/238
Oct. 16-17	Sunflower Invitational	Wichita, Kan.	7/14 (324-322-348—994)	Mandy Munsch – T12/243
Oct. 30-31	Lamar Lady Cardinal Invite	Beaumont, Texas	10/12 (331-330-331—992)	Anne Clark – T24/246

SPRING 1996

March 18-20	Lady Bronc Classic	Harlingen, Texas	T7/16 (361-327-321—1,009)	Missy Russell – T7/245
April 1-2	SW Missouri State Invitational	Springfield, Mo.	2/16 (328-330-330—988)	Missy Russell – 1/234
April 8-9	Susie Maxwell Berning Classic	Norman, Okla.	8/12 (337-329-326—992)	Anne Clark – T21/243
April 13-14	Boilermaker Invitational	West Lafayette, Ind.	9/12 (331-320-333—984)	Beth Reuter – T19/243
April 22-23	Big Eight Championship	Des Moines, Iowa	7/8 (353-342-330—1,025)	Missy Russell – T21/251

FALL 1996

Sept. 14-15	Minnesota Invitational	St. Paul, Minn.	4/15 (327-313—640)	Missy Russell – T15/158
Sept. 23-25	Northwest Invitational	Corvallis, Ore.	6/18 (330-318-318—966)	Missy Russell – T13/238
Oct. 7-8	Big 12 Preview	College Station, Texas	7/12 (318-316-315—949)	Anne Clark – T20/236
Oct. 14-15	Sunflower Invitational	Lawrence, Kan.	T6/14 (326-324-335—985)	Anne Clark – T8/239
Oct. 28-30	Roadrunner Invitational	Las Cruces, N.M.	9/19 (342-321-319—982)	Missy Russell – T16/238

SPRING 1997

Feb. 24-25	Texas A&M Bookstore Memorial	College Station, Texas	10/18 (324-328-350—1,002)	Mandy Munsch – T25/245
March 3-4	Bay Area Classic	Vallejo, Calif.	8/17 (347-329—676)	Beth Reuter – T21/169
March 17-19	UNM Spring Intercollegiate	Albuquerque, N.M.	8/15 (326-330-315—971)	Missy Russell – T21/169
March 24-25	SW Missouri State Invitational	Springfield, Mo.	1/8 (321-336-348—1,005)	Susan Tessary – T21/169
April 7-8	Utah Dixie Classic	St. George, Utah	8/18 (327-311-329—967)	Susan Tessary – T20/239
April 14-15	Susie Maxwell Berning Classic	Norman, Okla.	6/11 (315-327-326—968)	Anne Clark – 5/248
April 21-23	Big 12 Championship	Lawrence, Kan.	7/12 (311-320-328—959)	Anne Clark – T28/238
				Missy Russell – 6/232
				Missy Russell – T16/23

Year-By-Year Results (Since 1980)

Date	Tournament	Location	Result	Top KU Individual
FALL 1997				
Sept. 22-23	Northwest Invitational	Corvallis, Ore.	8/14 (338-326-333—997)	Mandy Munsch – T25/244
Sept. 25-27	Dick McGuire Invitational	Albuquerque, N.M.	16/18 (315-311-317—943)	Jamie Tucker – T31/232
Oct. 21-22	Sunflower Invitational	Wichita, Kan.	1/11 (315-317-300—932)	Jamie Tucker – T1/226
Nov. 2-4	Diet Coke Roadrunner Invite	Las Cruces, N.M.	7/19 (304-313-315—932)	Mandy Munsch – T20/229 Susan Tessary – T20/229

SPRING 1998				
Feb. 23-24	GTE "Mo"rmorial Invitational	College Station, Texas	8/16 (322-322-325—969)	Jamie Tucker – T22/237
March 2-3	Bay Area Classic	Vallejo, Calif.	6/19 (326-311—637)	Jamie Tucker – T7/151
March 14-16	Betsy Rawls Longhorn Classic	Austin, Texas	12/14 (340-331-333—1,004)	Jamie Tucker – T21/237
April 6-7	Utah Dixie Classic	St. George, Utah	T5/24 (311-310—621)	Jamie Tucker – T11/151 Susan Tessary – T11/151 Susan Tessary – T7/229 Beth Reuter – T33/241
April 18-19	Hawkeye Invitational	Iowa City, Iowa	8/10 (325-312-313—950)	
April 24-26	Big 12 Championship	Norman, Okla.	9/12 (329-315-328—972)	

FALL 1998				
Sept. 14-15	Chip-N Club Invitational	Lincoln, Neb.	13/15 (328-322-316—966)	Susan Tessary – T11/227
Sept. 21-22	Heather Farr Memorial Tournament	Louisville, Colo.	11/14 (310-319-327—956)	Susan Tessary – T26/234
Oct. 3-4	Big 12 Fall Preview	Austin, Texas	11/12 (326-323-323—972)	Susan Tessary – T23/235
Oct. 12-13	Shoot-out at the Legends	Franklin, Ind.	10/15 (313-304-319—936)	Mandy Munsch – T28/232
Oct. 30-Nov. 1	Diet Coke/Roadrunner Invitational	Las Cruces, N.M.	9/18 (321-306-313—940)	Susan Tessary – T13/230

SPRING 1999				
Feb. 26-28	Sun Trust Lady Gator Invitational	Gainesville, Fla.	18/19 (337-332—669)	Mandy Munsch - T54/163
March 13-14	Mountain View Collegiate	Tucson, Ariz.	3/9 (314-293—607)	Mandy Munsch - T5/148
March 26-28	Betsy Rawls Longhorn Classic	Austin, Texas	7/8 (326-324-318—968)	Susan Tessary - T3/234
April 4-6	Utah Dixie Classic	St. George, Utah	4/24 (294-314-319—927)	Mandy Munsch - T2/223
April 12-13	Susie Maxwell Berning Classic	Norman, Okla.	9/15 (321-314-323—958)	Mandy Munsch - T18/235
April 19-21	Big 12 Championship	Boulder, Colo.	11/12 (310-314-327—951)	Mandy Munsch - T16/230

FALL 1999				
Sept. 13-14	Big 12 Preview	Lincoln, Neb.	11/12 (320-318-322—960)	Sarah Mahoney - T8/228
Sept. 23-24	Dick McGuire Invitational	Albuquerque, N.M.	17/18 (319-325-320—964)	Sarah Mahoney - T49/234
Oct. 11-12	Shoot-out at the Legends	Franklin, Ind.	12/12 (318-310-314—942)	Susan Tessary - T13/224
Nov. 1-3	Diet Coke/Roadrunner Invitational	Las Cruces, N.M.	21/21 (330-339-317—986)	Sarah Mahoney - T69/242

SPRING 2000				
Feb. 18-19	Kansas vs. Indiana	Tampa, Fla.	2/2 (336-327—663)	Susan Tessary - T3/162
Feb. 28-29	Carolinas Classic	Pinehurst, N.C.	5/26 (317-314—631)	Susan Tessary - T2/152
March 10-11	N. Illinois Springlake Intercollegiate	Sebring, Fla.	4/18 (313-310—623)	Sarah Mahoney - T11/154
March 22	Kansas vs. Coastal Carolina	Myrtle Beach, S.C.	1/2 (317—317)	Sarah Mahoney - T1/7
March 23	Kansas vs. College of Charleston	Charleston, S.C.	1/2 (308—308)	Ashely Bishop - T1/75
April 3-4	Utah Dixie Classic	St. George, Utah	5/20 (309-304-310—923)	Susan Tessary - T5/220
April 10-11	Susie Maxwell Berning Classic	Norman, Okla.	9/13 (328-327-327—982)	Carrie Padden - T19/241
April 21-23	Big 12 Championship	Lubbock, Texas	12/12 (327-321-330—978)	Sarah Mahoney - T25/236

FALL 2000				
Sept. 8-10	Unlimited Potential Baytree Classic	Myrtle Beach, S.C.	14/18 (313-319-310—942)	Ashely Bishop - T30/233
Sept. 23-24	Mary Fossum Invitational	East Lansing, Mich.	15/15 (328—328)	Tiffany Kruggel - T46/79
Oct. 2-3	Big 12 Fall Preview	Waco, Texas	12/12 (329-324-316—969)	Ashely Bishop - T28/233
Oct. 9-10	Shoot-out at the Legends	Franklin, Ind.	14/15 (322-325-312—959)	Ashely Bishop - T45/231
Oct. 15-17	Sunflower Invitational	Manhattan, Kan.	5/8 (321-304-341—966)	Jennifer Bawanan - T22/240

SPRING 2001

Feb. 19-20	Islander Invitational	Corpus Christi, Texas	4/15 (324-324-309—957)	Chrystal Thayer - T2/234
Feb. 26-27	Carolinas Classic	Camp Lejeune, N.C.	T6/22 (323-321—644)	Tiffany Kruggel - T9/156
March 5-6	Verizon "Mo"morial Invitational	Houston, Texas	10/17 (321-313-321—955)	Tiffany Kruggel - T27/237
April 7-8	Indiana Invitational	Bloomington, Ind.	10/15 (335-328-319—982)	Ashely Bishop - T36/244
April 14-15	Hawkeye Invitational	Iowa City, Iowa	9/12 (316-313-319—948)	Ashely Bishop - T23/235
April 23-25	Big 12 Championship	Harvester, Iowa	12/12 (358-324-325—1,007)	Heather Rose - T29/244

FALL 2001

Sept. 7-9	Unlimited Potential Bay Tree Classic	Myrtle Beach, S.C.	14/31 (324-320-322—966)	Heather Rose - T45/241
Sept. 26	Sunflower Cup	East Lansing, Mich.	2/2 (320—320)	Jennifer Bawanan - 1/71
Oct. 1-2	Big 12 Invitational	Stillwater, Okla.	14/16 (322-325-340—987)	Jill MacDonald - T19/234
Oct. 8-9	Shoot-out at the Legends	Franklin, Ind.	16/19 (307-311-321—939)	Heather Rose - T33/229
Oct. 15-16	Sunflower Invitational	Lawrence, Kan.	10/17 (328—328)	Heather Rose - T9/77

SPRING 2002

Feb. 18-19	Islander Invitational	Corpus Christi, Texas	3/13 (338-319-306—963)	Jill MacDonald - T9/239
Feb. 25-26	Carolinas Classic	Pinehurst, N.C.	T12/22 (320-328—648)	Jennifer Bawanan - T32/159
March 4-5	Verizon "Mo"morial Invitational	Bryan, Texas	T16/18 (346-324—670)	Jill MacDonald - T36/163
March 11-12	Waterwood National Spring Invitational	Huntsville, Texas	7/17 (334-314-339—987)	Heather Rose - 1/235
April 6-7	Indiana Invitational	Bloomington, Ind.	13/14 (329-329-322—980)	Heather Rose - T28/240
April 13-14	Hawkeye Invitational	Iowa City, Iowa	7/10 (306-311-320—937)	Jill MacDonald - 3/221
April 19-21	Big 12 Championship	Manhattan, Kan.	12/12 (332-321-336—989)	Heather Rose - T32/238

FALL 2002

Sept. 6-8	Unlimited Potential Bay Tree Classic	Myrtle Beach, S.C.	14/35 (318-322-309—949)	Jill MacDonald - T39/235
Sept. 16-17	Chip-N Club Invitational	Lincoln, Neb.	8/14 (319-310-309—938)	Jennifer Bawanan - T15/232
Oct. 7-8	Shoot-out at the Legends	Franklin, Ind.	11/16 (309-306-310—925)	Tiffany Kruggel - T17/226
Oct. 13-15	Sunflower Invitational	Wichita, Kan.	T3/17 (309-303-312—924)	Heather Rose - 7/226
Oct. 29-30	Kent Youel Invitational	Honolulu, Hawaii	11/17 (308-314-308—930)	Jill MacDonald - T37/231

SPRING 2003

Feb. 17-18	Lady Aztec Spring Invitational	San Diego, Calif.	2/15 (304-309—613)	Jennifer Bawanan - 1/148
Feb. 28-March 2	Carolinas Classic	Pinehurst, N.C.	9/22 (323-313-334—970)	Chelsey Pryor - T13/233
March 10-11	Anteater Invitational	Coto de Caza, Calif.	8/13 (322-330-314—966)	Heather Rose - T14/234
March 23-25	Betsy Rawls Longhorn Invitational	Austin, Texas	12/12 (333-345-335—1013)	Tiffany Kruggel - T42/248
April 7-8	Susie Maxwell Berning Classic	Norman, Okla.	8/16 (325-316-333—974)	Chelsey Pryor - T22/241
April 21-23	Big 12 Championship	Columbia, Mo.	11/12 (325-322-326—973)	Jennifer Bawanan - T22/235

FALL 2003

Sept. 8-9	Ptarmigan Ram Fall Classic	Fort Collins, Colo.	7/16 (303-302-300—905)	Chelsey Pryor - T14/224
Sept. 20-21	Mary Fossum Invitational	East Lansing, Mich.	4/16 (320-304-313—937)	Tiffany Woods - T15/232
Oct. 6-7	Shoot-out at the Legends	Franklin, Ind.	15/18 (315-311-304—930)	Jill Womble - T20/223
Oct. 13-14	Sunflower Invitational	Manhattan, Kan.	4/12 (305-323-316—944)	Jill Womble - 8/234
Nov. 3-4	Edwin Watts/Palmetto Intercollegiate	Kiawah Island, S.C.	11/18 (314-308-322—944)	Chelsey Pryor - T28/233

SPRING 2004

March 1-2	Texas A&M "Mo"morial Invitational	Houston, Texas	T7/16 (302-302-312—916)	Amanda Costner - T2/221
March 15-16	Anteater Invitational	Irvine, Calif.	5/13 (322-301-303—926)	Amanda Costner - T11/227
March 21-23	Betsy Rawls Longhorn Invitational	Austin, Texas	15/18 (349-333-324—1,006)	Amanda Costner - T52/249
March 27-28	Mountain View Collegiate	Tucson, Ariz.	7/17 (297-302-311—910)	Chelsey Pryor - T28/228
April 12-13	Susie Maxwell Berning Classic	Norman, Okla.	7/15 (305-318-311—934)	Chelsey Pryor - T10/229
April 23-25	Big 12 Championship	College Station, Texas	8/12 (305-312-DNP—617)	Amanda Costner - T7/148

Year-By-Year Results (Since 1980)

Date	Tournament	Location	Result	Top KU Individual
FALL 2004				
Sept. 13-15	Dick McGuire Invitational	Albuquerque, N.M.	13/17 (308-312-307—927)	Chelsey Pryor - T22/225
Sept. 24-26	Jeannie McHaney Invitational	Lubbock, Texas	13/18 (311-PPD-317—628)	Amanda Costner - T17/151
Oct. 4-5	Price's "Give Em' Five" Intercollegiate	Las Cruces, N.M.	5/18 (310-307-304—921)	Jill Womble - T15/228
Oct. 11-12	Sunflower Invitational	Lawrence, Kan.	1/11 (311-319-316—946)	Tiffany Woods - T5/236
Oct. 17-19	Lady Razorback Invitational	Rogers, Ark.	9/19 (316-310-312—938)	Chelsey Pryor - T29/235
SPRING 2005				
Feb. 28-March 1	Texas A&M "Mo" morial Invitational	College Station, Texas	T14/15 (338-325-329—992)	Amanda Costner - T15/238
March 11-13	Betsy Rawls Invitational	Austin, Texas	16/17 (329-330-319—978)	Amanda Costner - T42/241
March 18-20	LSU/Cleveland Classic	Batoun Rouge, La.	15/18 (325-307-302—934)	Amanda Costner - T35/231
March 26-27	Mountain View Intercollegiate	Tucson, Ariz.	9/15 (297-299-296—892)	Annie Giangrosso - T15/220
April 9-10	Lady Boilermaker Invitational	West Lafayette, Ind.	6/13 (302-305-305—912)	Amanda Costner - 1/217
April 22-24	Big 12 Championship	Austin, Texas	9/12 (311-331-310—952)	Chelsey Pryor - T26/235
FALL 2005				
Sept. 12-13	Ptarmigan Ram Fall Classic	Fort Collins, Colo.	6/18 (304-293-297—894)	Amanda Costner - 3/212
Oct. 3-4	ORU Shootout	Tulsa, Okla.	2/17 (312-298-309—919)	Chelsey Pryor - 1/226
Oct. 10-11	Sunflower Invitational	Manhattan, Kan.	6/12 (315-297-311—923)	Amanda Costner - 6/220
Oct. 16-18	Embassy Suites Invitational	Rogers, Ark.	8/16 (303-309-306—918)	Amanda Costner - 4/216
Nov. 4-6	The Derby Invitational	Auburn, Ala.	16/17 (317-319-311—947)	Chelsey Pryor - T16/225
SPRING 2006				
Feb. 20-21	Central District Invitational	Parrish, Fla.	7/14 (307-309-306—922)	Chelsey Pryor - T5/223
March 10-12	Texas A&M "Mo" morial	Bryan, Texas	10/18 (321-328-322—971)	Amanda Costner - T11/231
March 17-19	Betsy Rawls Longhorn Invitational	Austin, Texas	13/15 (317-328-318—963)	Amanda Costner - T22/236
March 25-26	Mountain View Collegiate	Tucson, Ariz.	1/15 (297-297-290—884)	Chelsey Pryor - 6/217
April 9-10	Susie Maxwell Berning Classic	Norman, Okla.	T9/17 (310-303-310—923)	Amanda Costner - T6/222
April 17-19	Big 12 Championship	Lincoln, Neb.	11/12 (316-318-321—955)	Amanda Costner - T14/231
FALL 2006				
Sept. 11-12	Ptarmigan Ram Fall Classic	Fort Collins, Colo.	9/17 (295-310-298—903)	Amanda Costner - T18/223
Sept. 18-19	Chip-N Club Invitational	Lincoln, Neb.	3/14 (322-317-304—943)	Meghan Gockel - T4/231
Oct. 2-3	Sunflower Invitational	Lawrence, Kan.	1/16 (304-306-307—917)	Emily Powers - 4/225
Oct. 16-18	Price's "Give Em' Five" Intercollegiate	Las Cruces, N.M.	14/17 (313-313-307—933)	Amanda Costner - T13/225
Oct. 27-29	The Derby Invitational	Auburn, Ala.	15/17 (327-309—636)	Amanda Costner - T39/156
SPRING 2007				
Feb. 5-6	Baja Invitational	Baja, Calif.	T9/15 (322-317—639)	Amanda Costner - T32/158
Feb. 24-26	FSU Chrysler Challenge	Tallahassee, Fla.	7/10 (323-328-316—967)	Amanda Costner - T22/238
March 17-19	Betsy Rawls Longhorn Classic	Austin, Texas	11/15 (323-309-311—943)	Amanda Costner - 15/229
March 25-26	Mountain View Collegiate	Tucson, Ariz.	T4/17 (297-291-286—874)	Emily Powers - T7/215
April 8-9	Susie Maxwell Berning Classic	Norman, Okla.	4/18 (295-294-295—884)	Amanda Costner - T10/217
April 16-18	Big 12 Championship	Waco, Texas	9/12 (312-314-319—945)	Amanda Costner - 1/221
FALL 2007				
Sept. 10-11	Chip-N Club Invitational	Lincoln, Neb.	5/19 (313-305-303—921)	Emily Powers - T10/224
Sept. 17-18	Ron Moore Intercollegiate	Highlands Ranch, Colo.	8/11 (309-308-294—911)	Emily Powers - T7/221
Oct. 1-2	Marilynn Smith Invitational	Manhattan, Kan.	1/13 (302-298—600)	Camilla Svensson - T4/147
Oct. 15-17	Price's "Give Em' Five" Intercollegiate	Las Cruces, N.M.	T4/16 (302-302-304—908)	Emily Powers - T8/223
Oct. 26-28	UA-Ann Rhoads Intercollegiate	Tuscaloosa, Ala.	13/18 (317-312-297—926)	Emily Powers - T11/223

SPRING 2008

Feb. 17-19	Qdoba Invitational	Miami Lakes, Fla.	6/12 (307-314-300—921)	Grace Thiry - T7/224
Feb. 25-26	Kitahara Invitational	Fresno, Calif.	3/16 (295-301—596)	Emily Powers - T2/145
March 17-19	Betsy Rawls Invitational	Austin, Texas	13/17 (325-332—657)	Grace Thiry - T24/160
March 29-30	Mountain View Collegiate	Tucson, Ariz.	11/18 (299-308-302—909)	Emily Powers - T7/220
April 6-8	Susie Maxwell Berning Classic	Norman, Okla.	3/16 (304-300-294—898)	Emily Powers - T14/223
April 25-27	Big 12 Championship	Stillwater, Okla.	10/12 (333-325-340—998)	Emily Powers - T29/247

FALL 2008

Sept. 15-16	Chip-N Club Invitational	Lincoln, Neb.	6/12 (306-306-304—916)	Grace Thiry - 10/223
Sept. 22-23	Marilynn Smith Sunflower Invitational	Lawrence, Kan.	5/16 (318-308-308—934)	Emily Powers - 1/223
Sept. 29-30	Johnie Imes Invitational	Columbia, Mo.	5/18 (306-306-301—913)	Emily Powers - T6/221
Oct. 6-7	McHaney/Morehead Invitational	Lubbock, Texas	7/14 (313-316-314—943)	Emily Powers - T7/227
Oct. 24-26	The Derby	Auburn, Ala.	14/18 (311-306-314—931)	Meghna Bal - T12/224

SPRING 2009

Feb. 16-17	Central District Invitational	Parrish, Fla.	T13/15 (318-308-320—946)	Emily Powers - T29/230
March 6-8	Duramed Collegiate Invitational	Rio Verde, Ariz.	1/20 (294-295-294—883)	Meghan Gockel - 1/218
March 27-29	Liz Murphey Collegiate Classic	Athens, Ga.	18/18 (327—327)	Emily Powers - T30/77
April 5-6	Susie Maxwell Berning Classic	Norman, Okla.	4/15 (327-314-317—958)	Emily Powers - T11/237
April 18-19	Lady Buckeye Invitational	Columbus, Ohio	T9/15 (309-314-327—950)	Emily Powers - T33/235
April 24-26	Big 12 Championship	Lubbock, Texas	5/12 (312-310-323—945)	Meghan Gockel - T6/230

FALL 2009

Sept. 15-16	Chip-N Club Invitational	Lincoln, Neb.	3/14 (301-295-299—895)	Emily Powers - 2/213
Sept. 28-29	Marilynn Smith Sunflower Invitational	Manhattan, Kan.	6/13 (324-325-305—954)	Emily Powers - T7/231
Oct. 5-6	Johnie Imes Invitational	Columbia, Mo.	10/18 (319-313-303—935)	Emily Powers - T24/231
Oct. 12-14	Price's "Give Em' Five" Intercollegiate	Las Cruces, N.M.	T7/18 (306-297-297—900)	Meghna Bal - T6/219
Oct. 26-27	Edwin Watts/Palmetto Intercollegiate	Kiawah Island, S.C.	2/18 (306-295-294—895)	Emily Powers - T6/221

SPRING 2010

Feb. 21-23	Edwin Watts/Kiawah Island Classic	Kiawah Island, S.C.	T12/19 (303-314-298—915)	Emily Powers - T11/221
March 5-7	Duramed/Rio Verde Collegiate	Rio Verde, Ariz.	5/19 (303-297-317—917)	Meghna Bal - T15/229
March 15-17	Northern Migration Invite	Florence, Ariz.	11/19 (299-308-322—929)	Meghna Bal - T29/231
April 2-4	Ole Miss Rebel Intercollegiate	Oxford, Miss.	9/20 (300-305-305—910)	Grace Thiry - T24/225
April 23-25	Big 12 Championship	Norman, Okla.	12/12 (314-312-312—938)	Emily Powers - T28/231

FALL 2010

Sept. 13-14	Chip-N Club Invitational	Lincoln, Neb.	2/15 (300-299—599)	Meghna Bal - T4/148
Sept. 27-28	Marilynn Smith Sunflower Invitational	Lawrence, Kan.	1/12 (313-290-300—903)	Grace Thiry - T4/148
Oct. 4-5	Johnie Imes Invitational	Columbia, Mo.	8/15 (306-302-303—911)	Grace Thiry - 1/219
Oct. 11-13	Price's "Give 'Em Five" Intercollegiate	Las Cruces, N.M.	9/14 (302-300-297—899)	Grace Thiry - T27/227
Oct. 25-26	Edwin Watts/Palmetto Intercollegiate	Dr. Johns Island, S.C.	4/18 (296-296-295—887)	Katy Nugent - T22/224
				Katy Nugent - T4/216

SPRING 2011

Feb. 13-14	Claud Jacobs Challenge	Victoria, Texas	2/16 (301-311-308—920)	Meghna Bal - T3/227
Feb. 27-March 1	Louisville Cards Challenge	Weston, Fla.	5/14 (312-305-296—913)	Katy Nugent - T7/222
March 25-26	Mountain View Collegiate	Tucson, Ariz.	17/18 (307-309-297—913)	Thanuttra Boonraksasat - T45/225
April 1-3	Ole Miss Rebel Intercollegiate	University, Miss.	9/18 (308-306-306—920)	Thanuttra Boonraksasat - T4/217
April 11-12	Baylor Spring Invitational	Waco, Texas	6/18 (312-317-296—925)	Meghan Potee - T15/228
April 22-24	Big 12 Championship	Columbia, Mo.	11/12 (302-305-304—911)	Thanuttra Boonraksasat - T23/224

Year-By-Year Results (Since 1980)

Date	Tournament	Location	Result	Top KU Individual
FALL 2011				
Sept. 12-14	Dale McNamara Invitational	Tulsa, Okla.	T11/15 (313-304-310—927)	Nadia Luttner - T19/224
Sept. 26-27	Marilynn Smith Sunflower Invitational	Manhattan, Kan.	5/12 (307-301-313—921)	Thanuttra Boonraksasat - T4/221
Oct. 3-4	Johnie Imes Invitational	Columbia, Mo.	11/15 (313-302-307 —922)	Thanuttra Boonraksasat - T27/227
Oct. 16-18	Susie Maxwell Berning Classic	Norman, Okla.	8/17 (302-301-308 —311)	Meghan Potee - T26/226
Oct. 23-24	Edwin Watts/Palmetto Intercollegiate	Charleston, S.C.	T9/17 (312-313-287—912)	Meghan Potee - T3/217
SPRING 2012				
Feb. 12-14	UCF Challenge	Orlando, Fla.	16/18 (306-302-309—917)	Katie Nugent - T38/224
Feb. 27-28	Sir Pizza Challenge	Weston, Fla.	T9/14 (306-308-305—919)	Thanuttra Boonraksasat - 8/220
March 9-11	Rio Verde Collegiate Invitational	Rio Verde, Ariz.	1/16 (312-297-291—900)	Katy Nugent - 2/220
March 23-24	MountainView Collegiate	Tucson, Ariz.	14/15 (301-312-302—915)	Katy Nugent - T37/224
April 9-10	Knights and Pirates Invitational	Melbourne, Fla.	15/15 (317-316-323—956)	Thanuttra Boonraksasat - 67/238
April 27-29	Big 12 Championship	Lawrence, Kan.	10/10 (338-307-306—951)	Thanuttra Boonraksasat - T30/236
				Audrey Yowell - T30/236
FALL 2012				
Sept. 17-18	Dale McNamara Invitational	Tulsa, Okla.	11/15 (295-303-312—910)	Thanuttra Boonraksasat - T24/223
Sept. 24-25	Marilynn Smith Sunflower Invitational	Lawrence, Kan.	1/13 (303-298-305—906)	Thanuttra Boonraksasat - 2/221
Oct. 8-10	Price's "Give Em' Five" Intercollegiate	Las Cruces, N.M.	1/13 (294-289-288—871)	Yupaporn Kawinpakorn - 1/213
Oct. 15-17	Susie Maxwell Berning Classic	Norman, Okla.	9/18 (297-303-307—907)	Meghan Potee - T24/226
Oct. 28-29	Edwin Watts/Palmetto Intercollegiate	Kiawah Island, S.C.	7/17 (307-296-299—902)	Thanuttra Boonraksasat - T5/219
SPRING 2013				
Feb. 15-17	Florida State Matchup	Tallahassee, Fla.	10/12 (310-306-305—921)	Meghan Potee - T18/225
Feb. 25-26	Sir Pizza Terrapin Challenge	Weston, Fla.	9/16 (292-305-321—918)	Yupaporn Kawinpakorn - T12/225
March 8-10	Notre Dame Clover Cup	Mesa, Ariz.	11/16 (312-301-304—917)	Thanuttra Boonraksasat - T19/223
March 20	Jayhawk-Cornhusker Challenge	Lawrence, Kan.	1/2 (317)	Meghan Potee - 1/76
March 25-26	Briar's Creek Invitational	Johns Island, S.C.	8/18 (309-315-301—925)	Thanuttra Boonraksasat - T4/222
April 13-14	Indiana Invitational	Bloomington, Ind.	2/15 (304-296-293—893)	Thanuttra Boonraksasat - 2/222
April 19-21	Big 12 Championship	Rhodes, Iowa	8/9 (322-304-315—941)	Yupaporn Kawinpakorn - T10/229
FALL 2013				
Sept. 16-17	Cardinal Cup	Simpsonville, Ky.	2/13 (295-286-300—881)	Yupaporn Kawinpakorn - T2/213
Sept. 23-24	Marilynn Smith Invitational	Manhattan, Kan.	1/15 (303-299-307—910)	Meghan Potee - 1/224
Sept. 30 - Oct. 1	Challenge at Onion Creek	Austin, Texas	4/11 (294-289-292--876)	Thanuttra Boonraksasat - 6/216
Oct. 12-13	Diane Thomason Invitational	Iowa City, Iowa	2/12 (303-298-303—904)	Yupaporn Kawinpakorn - 2/223
Oct. 27-28	Palmetto Intercollegiate	Kiawah Island, S.C.	1/19 (297-295-284—876)	Pornvipa Sakdee - T4/217
SPRING 2014				
Feb. 14-16	Florida State Matchup	Tallahassee, Fla.	9/11 (309-311-301—921)	Thanuttra Boonraksasat - T32/229
March 14-16	3M Lady Jaguar Intercollegiate	Augusta, Ga.	3/14 (316-294-300—910)	Pornvipa Sakdee - T8/225
March 24-25	2014 Briar's Creek Invitational	Johns Island, S.C.	7/17 (308-301-294—903)	Yupaporn Kawinpakorn - T15/223
April 4-6	SMU Invitational	Dallas, Texas	5/16 (306-299—605)	Yupaporn Kawinpakorn - T7/147
April 19-20	Lady Buckeye Invitational	Columbus, Ohio	5/12 (305-307-304—916)	Yupaporn Kawinpakorn - T6/227
				Thanuttra Boonraksasat - T6/227
April 25-27	Big 12 Championship	Austin, Texas	T4/9 (297-295-294—886)	Yupaporn Kawinpakorn - T2/211
May 8-10	NCAA Regional	Stillwater, Okla.	T5/24 (309-290-200—899)	Minami Levonowich - T19/222
May 20-23	NCAA Championship	Tulsa, Okla.	24/24 (313-293-303—292)	Yupaporn Kawinpakorn - T84/299
FALL 2014				
Sept. 8-9	Marilynn Smith Invitational	Lawrence, Kan.	2nd/11 (296-294-310—900)	Pornvipa Sakdee - 1st/216
Sept. 15-16	Minnesota Invitational	Minneapolis, Minn.	3rd/14 (302-303-300—905)	Gabriella DiMarco - T6th/229
Sept. 21-23	Lady Paladin Invitational	Greenville, S.C.	T5th/18 (289-298-305—892)	Yupaporn Kawinpakorn - T10th/218
Oct. 10-12	Ron Moore Women's Intercollegiate	Littleton, Colo.	2nd/12 (289-296-299—884)	Yupaporn Kawinpakorn - 2nd/215
Oct. 26-28	Palmetto Intercollegiate	Kiawah Island, S.C.	5th/20 (288-303-306—897)	Yupaporn Kawinpakorn - 2nd/213

SPRING 2015

Feb. 8	Kansas-Tulsa Dual	Owasso, Oklahoma	1st/2 (292)	Minami Levonowich - T1st/71
Feb. 22-24	ALLSTATE Sugar Bowl Intercollegiate	New Orleans, La.	12th/15 (306-309-316)	Minami Levonowich - T35th/230
Mar. 16-17	Arizona Wildcat Invitational	Tucson, Ariz.	13th/15 (312-299-302)	Minami Levonowich - T45th/226
Mar. 23-25	SDSU Farms Invitational (Match Play)	San Diego, Calif.	2-2 (L(2-3), W(2.5-2.5), L(1-3), W(3-2))	Gabriella DiMarco - 4-0
Apr. 10-11	DAC/SMU Invitational	Dallas, Texas	8th/16 (304-298-311)	Yupaporn Kawinpakorn - T1st/215
Apr. 23-25	Big 12 Championship	San Antonio, Texas	8th/9 (301-301-304)	Pornvipa Sakdee - 4th/216

FALL 2015

Sept. 7-8	Marilynn Smith Sunflower Invitational	Manhattan, Kan.	7th/12 (312-300-310)	Yupaporn Kawinpakorn - T7th/218
Sept. 14-15	Minnesota Invitational	Minneapolis, Minn.	12th/12 (314-312-317)	Yupaporn Kawinpakorn - T10th/223
Sept. 19-21	Schooner Fall Classic	Norman, Okla.	4th/12 (285-282)	Yupaporn Kawinpakorn - 1st/131
Oct. 5-6	Chip-N Club Invitational	Lincoln, Neb.	3rd/13 (299-302-292)	Yupaporn Kawinpakorn - 1st/212
Oct. 25-27	Palmetto Intercollegiate	Kiawah Island, S.C.	8th/20 (294-306-298)	Yupaporn Kawinpakorn - 1st/213