



KANSAS

#KUsoccer

f /KANSASSOCCER

t /KUWSOCCER

ig /KANSASSOCCER

OCT. 10, 2019 | OKLAHOMA | MATCH NOTES

KANSAS COMMUNICATIONS

JAYHAWKS

9-4-0 OVERALL

United Soccer rank: --

Head Coach: Mark Francis

1-2-0

TopDrawer rank: --

Record: 228-167-34 (21st year)



-vs-



6-4-3 OVERALL

United Soccer rank: --

Head Coach: Matt Potter

1-1-1

TopDrawer rank: --

Record: 61-72-23 (Eighth year)

SOONERS

2019 SCHEDULE

Date	KU Rnk	OPP Rnk	Opponent	TV	Time/Result
AUGUST (3-0-0)					
22	rv/-	-/-	NEBRASKA	ESPN+	W, 4-0
25	rv/-	-/-	LOYOLA-CHICAGO	ESPN+	W, 6-0
29	18/-	20/18	MEMPHIS	ESPN+	W, 2-1
SEPTEMBER (6-3-0)					
1	18/-	-/-	FLORIDA ATLANTIC	ESPN+	W, 1-0
6	11/-	-/-	vs. DePaul*		L, 0-1
8	11/-	rv/-	at Purdue*	BTN+	W, 2-1
13	18/-	-/-	at Northwestern	BTN+	W, 1-0
15	18/-	-/-	at Western Michigan		W, 2-0
19	14/rv	7/7	BYU	ESPN+	L, 0-2
22	14/rv	-/-	KENNESAW STATE	ESPN+	W, 3-1
26	17/rv	-/-	TEXAS*	FSI	L, 0-1
29	17/rv	-/-	BAYLOR*	ESPN+	W, 4-1
OCTOBER (0-1-0)					
3	21/rv	25/-	at Oklahoma State*	ESPN+	L, 2-5
10	rv/-	-/-	at Oklahoma*	FS Oklahoma	7 p.m.
13	rv/-	14/25	at Texas Tech*	FS Southwest	1 p.m.
18	-/-	-/-	KANSAS STATE*	ESPN+	7 p.m.
24	-/-	-/-	WEST VIRGINIA*	ESPN+	7 p.m.
27	-/-	-/-	at TCU*	FS Southwest	1 p.m.
31	-/-	-/-	at Iowa State*		7 p.m.
NOVEMBER					
3-10	Big 12 Championship<			TBD	TBD

All times Central and subject to change; Home games **BOLD** and played at Rock Chalk Park; Rank: United Soccer Coaches Top 25 / TopDrawer Soccer Top 25; *Boilermaker Challenge Cup (West Lafayette, Ind.); *Big 12 Conference Game; < Big 12 Championship (Kansas City, Mo.)

BY THE NUMBERS

5 Senior Katie McClure's five game-winning goals is second in the NCAA. The Wichita native now has 16 game-winners in her collegiate career, the most ever by a Jayhawk.

27 At 27 goals scored so far this season, the Jayhawks are already just one from tying their total from the entire 2018 campaign and have already surpassed their goals-scored numbers from 2017, 2016 and 2015.

70 Katie McClure has started in 70-consecutive matches for the Jayhawks, dating back to 2016. The streak marks the sixth-longest by a field player in program history.



GAME

14

KANSAS at OKLAHOMA

Norman, Okla. • John Crain Field (3,500)
Thursday, October 10, 2019 • 7 p.m. CT



Play-by-Play: Chad McKee
Analyst: Liz Keester



Radio: IMG Jayhawk Radio Network
Webcast: KUathletics.leanplayer.com
Play-by-Play: Jack Nadeau

QUICK KICKS

- KU will continue its three-match road stint on Thursday, Oct. 10 when it travels to Oklahoma for a 7 p.m. match against the Sooners. The contests at John Crain Field will be streamed on Fox Sports Go.
- Kansas is coming off a 5-2 loss to Oklahoma State in Stillwater on Oct. 3. Juniors Ceri Holland and Mandi Duggan scored in the loss as the Jayhawks conceded five goals in a league game for just the second time since 2011.
- Kansas was slotted at No. 18 in the season's third Rating Percentage Index (RPI) released by the NCAA this week. It marked the first time since 2014 that the Jayhawks were slotted in the top-20 of the RPI in three-straight weeks.
- The Jayhawks carry a four-match unbeaten streak against the Sooners into Thursday's match. This stretch came after KU claimed just one win over Oklahoma in six tries from 2010-14.
- Kansas' 27 goals scored this season rank 33rd in the NCAA and fourth in the conference. The figure has already surpassed the goals scored by the 2015, 2016 and 2017 squads, with KU's next goal matching the total from the entire 2018 campaign.
- Since 2014, the Jayhawks are 49-2-1 in matches in which they score two or more goals. This includes a 15-1-0 mark since the start of the 2018 season, with the lone blemish coming in the 5-2 loss to OSU last week in Stillwater.
- Ten different Jayhawks have scored a goal this season. McClure leads the team with nine goals, which ranks her 19th in the NCAA.
- McClure's nine goals are the most by a Jayhawk through her first 13 games of a season since 2003, when Caroline Smith netted 11 goals in her first 13 outings en route to posting 19 that season.
- The KU defense has amassed a goals-against average of 1.00 after its first 13 outings, a number that ranks the Jayhawks third in the Big 12.
- Staying on defense, the KU backline has held its first 13 opponents to an average of 9.6 shots per game, which includes five matches when the Jayhawks conceded five or fewer opponent shots.

SERIES AT A GLANCE

OVERALL **KU LEADS, 13-9-2**
in Norman Tied, 4-4-2
Last Meeting W, 2-1, @ KU (9.21.18)



9-4-0

W-L-D

6-4-3

-

UNITED SOCCER RANK

-

2.08

GOALS PER GAME

1.38

14.7

SHOTS PER GAME

12.5

.141

SHOT PERCENTAGE

.110

.403

SHOT ON GOAL PERCENTAGE

.436

1.00

GOALS ALLOWED PER GAME

1.46

2.5

SAVES PER GAME

3.5

.717

SAVE PERCENTAGE

.703

2-2

PENALTIES

3-6

9.3

FOULS PER GAME

11.1

7-0

YELLOW - RED CARDS

12-1

LAST MATCH STARTERS



NUMERICAL ROSTER

NO.	NAME	POS.	HT.	YR.	HOMETOWN (PREVIOUS SCHOOL)
0	Gabbie Dawe	.GK	5-10	Fr.	Memphis, Tenn. (Houston HS)
00	Sarah Peters	.GK	5-10	So.	Lee's Summit, Mo. (Lee's Summit North HS)
1	Melania Pasar	.GK	5-11	Fr.	Portoroz, Slovenia (Ginnasio Antonio Sema Pirano)
2	Ellie Prybylski	.D/F	5-5	Fr.	Forsyth County, Ga. (Lambert HS)
3	Mya Sheridan	.F	5-5	Fr.	Schertz, Texas (Samuel Clemens HS)
4	Kailey Lane	.F	5-9	So.	Omaha, Neb. (Millard North HS)
6	Kaela Hansen	.D	5-7	So.	Burnaby, B.C. (Burnaby Central Secondary)
7	Avery Hall	.M	5-5	Jr.	McKinney, Texas (McKinney Boyd HS)
8	Ebba Costow	.M	5-5	Fr.	Uppsala, Sweden (Celsiuskolan)
9	Madison Meador	.D	5-7	Sr.	Ballwin, Mo. (Marquette HS/Ole Miss)
10	Gracely Briley	.M	5-9	Fr.	Olathe, Kan. (Blue Valley Southwest HS)
11	Chais Wright	.D	5-4	RS-Fr.	Kansas City, Mo. (Park Hill HS)
12	Katie McClure	.F	5-4	Sr.	Wichita, Kan. (Maize HS)
13	Kathryn Castro	.M	5-3	Jr.	Plano, Texas (Plano West Senior High)
14	Samantha Barnett	.M	5-8	So.	Edmond, Okla. (Edmond Memorial HS)
15	Ceri Holland	.M	5-5	Jr.	West Yorkshire, England (South Craven School)
16	Italia Bradley	.D	5-7	So.	Coppell, Texas (Coppell HS)
17	Lia Beyer	.D	5-7	Fr.	Parker, Colo. (Legend HS)
18	Emilie Gavillet	.GK	5-9	RS-Fr.	Montreux, Switzerland (Wilhelm Hausenstein Gymnasium)
19	Eva Eliasdóttir	.F	5-9	Sr.	Thorlakhofn, Iceland (Fjölbrotaskóli Suðurlands)
20	Margherita Giubilato	.F	5-4	Fr.	Martellago, Italy (Accademia Dante Alighieri)
21	Isabella Cavalcante	.D	5-7	Jr.	Glen Ellyn, Ill. (Glenbard West HS)
22	Mandi Duggan	.F	5-2	Jr.	Aurora, Colo. (Grandview HS)
23	Grace Wiltgen	.D	5-6	So.	Denton, Texas (Denton HS)
24	Elise Reina	.D	5-2	Sr.	Fayetteville, Ark. (Har-Ber HS)
26	Addisyn Merrick	.D	5-6	Sr.	Lee's Summit, Mo. (Lee's Summit North HS)
27	Sophie Maierhofer	.M	5-7	Sr.	Graz, Austria (University of Bremen)
28	Bri Amos	.F	5-7	So.	Tulsa, Okla. (Union HS)

STAFF

NAME	POSITION // YEAR AT KU	ALMA MATER // YEAR
Mark Francis	Head Coach // 21st	SMU // 1987
Kelly Miller	Assoc. Head Coach // 21st	Copper Union // 1996
Laura Jackson	Assistant Coach // 1st	Iona // 2012
Derek Shoare	Volunteer Asst. Coach // 5th	St. Mary's (London) // 1980
Shelby Larson	Dir. of Operations // 1st	Tampa // 2014

PRONUNCIATION GUIDE

Isabella CAVALCANTE	kav-uhl-KAHN-tay
Ebba COSTOW	COST-ov
Mandi DUGGAN	DEW-guhn
Eva ELIASDÓTTIR	ell-EYE-iss-daw-ter
Emilie GAVILLET	GAH-vee-ay
MARGHERITA GIUBILATO	marg-uh-REET-uh joo-bee-LAH-toe
CERI Holland	CARE-ee
Madison MEADOR	MEH-der
Sophie MAIERHOFER	MY-er-ha-fur
Ellie PRYBYLSKI	.prib-ILL-skee
Grace WILTGEN	WILL-chen
CHAIS Wright	CHASE

RADIO/TV ROSTER

 0 GABBIE DAWE Fr. // GK // 5-10 Memphis, Tenn.	 00 SARAH PETERS So. // GK // 5-10 Lee's Summit, Mo.	 1 MILANIA PASAR Fr. // GK // 5-11 Portoroz, Slovenia	 2 ELLIE PRYBYLSKI Fr. // D/F // 5-5 Forsyth County, Ga.	 3 MYA SHERIDAN Fr. // F // 5-5 Schertz, Texas	 4 KAILEY LANE So. // F // 5-9 Omaha, Neb.	 6 KAELA HANSEN So. // D // 5-7 Burnaby, B.C.	 7 AVERY HALL So. // M // 5-5 McKinney, Texas	 8 EBBA COSTOW Fr. // M // 5-5 Uppsala, Sweden	 9 MADISON MEADOR Sr. // D // 5-7 Ballwin, Mo.
 10 GRACELY BRILEY Fr. // M // 5-9 Olathe, Kan.	 11 CHAIS WRIGHT R-Fr. // D // 5-4 Kansas City, Mo.	 12 KATIE McCLURE Sr. // F // 5-4 Wichita, Kan.	 13 KATHRYN CASTRO Jr. // M // 5-3 Plano, Texas	 14 SAMANTHA BARNETT So. // M // 5-8 Edmond, Okla.	 15 CERI HOLLAND Jr. // M // 5-5 West Yorkshire, England	 16 ITALIA BRADLEY So. // D // 5-7 Coppell, Texas	 17 LIA BEYER Fr. // D // 5-7 Parker, Colo.	 18 EMILIE GAVILLET R-Fr. // GK // 5-9 Montreux, Switzerland	 19 EVA ELÍASDÓTTIR Sr. // D // 5-9 Thorlakhofn, Iceland
 20 MARGHERITA GIUBILATO Fr. // F // 5-4 Martellago, Italy	 21 ISABELLA CAVALCANTE Jr. // D // 5-7 Glen Ellyn, Ill.	 22 MANDI DUGGAN Jr. // F // 5-2 Aurora, Colo.	 23 GRACE WILTGEN So. // D // 5-6 Denton, Texas	 24 ELISE REINA Sr. // D // 5-2 Fayetteville, Ark.	 26 ADDISYN MERRICK Sr. // D // 5-6 Lee's Summit, Mo.	 27 SOPHIE MAIERHOFER Sr. // M // 5-7 Graz, Austria	 28 BRI AMOS So. // F // 5-7 Tulsa, Okla.	 HC MARK FRANCIS Head Coach 21st season	

SERIES VS. OKLAHOMA

The contest Thursday will mark the 25th between Kansas and Oklahoma since the series' first match in 1997. KU leads the match up 13-9-2 all-time and is unbeaten against the Sooners in the most recent four meetings. KU is 4-4-2 against the Sooners in Norman, winning the last contest on John Crain Field, 3-1, in 2017.

SCOUTING THE SOONERS

Oklahoma State enters Thursday's match coming off a 3-2 overtime win over Kansas State last week in Norman. Prior to the win over the Wildcats, OU had claimed just two wins their previous eight outings. The Sooners began their season at 4-1-1 after six matches and have since added a 1-1 draw to their resume at then-No. 25 Texas Tech on Sept. 29.

Offensively, OU is led by Kaylee Dao who has netted 11 of her team's 18 goals on the year, a figure that is tied for the lead in the Big 12. Megan Reilly is tops on her squad with three assists and nine different Sooners have already tallied double-figure shots, led by Dao with 45 on the year.

On defense, Oklahoma has conceded 19 goals and picked up three shutouts through their first 13 outings of 2019. Nikki Panas has started in goal for OU in its last five matches. She boasts a goals-against average of 1.35 and has collected 18 saves.

Oklahoma is led by Matt Potter, who is in his eighth season at the helm in Norman. Potter has a record of 61-72-23 as the OU head coach.

NO GAMES OFF

Before Kansas soccer even hit the pitch for its first match of the season, the Jayhawks knew they would be in for a gauntlet of a schedule in 2019.

The 2019 Jayhawks' slate, which currently sits as the 19th-toughest in all of NCAA DI, features nine teams that competed in the NCAA Tournament a year ago as well as three reigning conference champions. The Jayhawks, sitting at 9-4-0 after their first 13 games of the season, have played or will play five teams that are ranked or receiving votes in the most recent United Soccer Coaches' top-25 poll. That number includes two squads inside the top-10.

The Jayhawks have already played three top-25 teams over the first two months of the season - No. 20 Memphis (W, 2-1), No. 7 BYU (L, 0-2) and No. 25 Oklahoma State (L, 2-5).

It appears as though KU will face several more battles with top-25 teams this season with the bulk of Big 12 Conference play still to come. The conference currently features four teams that are ranked or receiving votes in the Coaches' poll and that includes No. 14 Texas Tech and No. 18 Oklahoma State.

SPREADING THE WEALTH

The KU offense has shown to be a tough assignment for opposing defenses this year after a host of Jayhawks have made their presence known on the stat sheet. Thirteen different Jayhawks have had their hand in at least one of the team's goals thus far in 2019, either scoring or assisting. A total of eight players have managed to tally double-digit shots.

This is a trend that has been carried over from last year's squad which was also an unselfish bunch, as 11 different Jayhawks tallied at least one goal or assist in 2018.

LAST TIME OUT

The No. 21 Kansas Jayhawks were unable to contain the offensive attack of No. 25 Oklahoma State as the Cowgirls sprinted to a 5-2 victory on Oct. 3 in Stillwater. Juniors Ceri Holland and Mandi Duggan tallied their fourth and third goals of the season, respectively, in the loss.

The Cowgirls jumped on Kansas early, netting the match's opening goal in the 10th minute off a corner kick service. The deficit went to 2-0 less than 20 minutes later when OSU's Charme Morgan knocked in a rebound as the Jayhawks exited the opening 30 minutes of action in a two-goal hole.

The offensive onslaught continued less than three minutes later when OSU found the back of the net off another set piece, this time off a freekick.

After the Cowgirls netted their fourth goal of the night just over seven minutes after the intermission, KU responded with a pair to cut the OSU lead in half. Holland got on the end of a cross from Katie McClure to put in the Jayhawks' first goal of the night in the 53rd minute. Nine minutes later, Duggan let loose a shot from nearly 30 yards out that made its way through a crowded OSU box and into the back of the net. It marked Duggan's third goal in two games.

IRON JAYHAWK

Senior Katie McClure has continued an impressive streak into her final year in Lawrence as she has started each of the Jayhawks' last 70 matches of the Jayhawks' matches dating back to her freshman year in 2016. McClure's mark is already among the longest in program history as it sits sixth on the all-time list among field players.

CONSECUTIVE MATCHES STARTED BY A JAYHAWK FIELD PLAYER

Rnk	Name (Yrs.)	Games
1.	Kayla Morrison (2014-17)	83
	Estelle Johnson (2006-09)	83
	Afton Sauer (2004-07)	83
4.	Whitney Berry (2009-12)	82
	Shelby Williamson (2009-12)	82
6.	Katie McClure (2016-Present)	70

QUICK FACTS**GENERAL INFORMATION**

Location	Lawrence, Kan.
Enrollment	28,401
Founded1866
NicknameJayhawks
School Colors	Crimson and Blue (PMS: Blue 293; Crimson 186)
ConferenceBig 12
ChancellorDouglas A. Giron
Athletics DirectorJeff Long
Associate Athletics Director/Soccer AdministratorJane Fulton
Athletics Websitewww.kuathletics.com
Ticket Office Phone1.800.34.HAWKS (42957)

SOCCER FACILITY

Home Facility (Capacity)	Rock Chalk Park (2,500)
KU Record at Rock Chalk Park	32-17-2 (.647)
Opened2014
SurfaceNatural Grass (Bermuda and Rye)

COACHING STAFF/SUPPORT STAFF

Head CoachMark Francis (SMU, 1987)
Record at Kansas228-167-34 (21st season)
Overall261-192-35 (24th season)
Associate Head CoachKelly Miller (The Cooper Union, 1996)
Year at Kansas21st
Assistant CoachLaura Jackson (Iona, 2012)
Year at KansasFirst
Volunteer AssistantDerek Shoare
Year at KansasFifth

2018 IN REVIEW

Overall Record12-6-3 (.643)
Big 12 Record5-4-0 (.556)
Big 12 Finish6th
Home9-2-0 (.810)
Away2-4-1 (.357)
Neutral1-0-2 (.500)

PROGRAM HISTORY

First Year of Soccer at Kansas1995 (25th season)
All-Time Record252-215-37 (.538)
All-Time Big 12 Record93-109-17 (.463)
Conference Titles1 (2004)
NCAA Postseason Appearances8
.	(2001, 2003, 2004, 2008, 2011, 2014, 2016, 2018)
NCAA Postseason Record6-8-0 (.429)

2019 TEAM INFORMATION

Letterwinners Returning/Lost18/9
Starters Returning/Lost9/3
Newcomers8

BIG 12 STANDINGS**BIG 12****OVERALL**

	Record	%	Home	Away	Stk	Pts	Record	%	Home	Away	Neut	Stk
Texas	3-1-0	0.750	1-1-0	2-0-0	L1	9	8-5-0	0.615	5-3	3-2	0-0	L1
Texas Tech	2-0-1	0.833	1-0-1	1-0-0	W1	7	10-1-1	0.875	5-0-1	3-1-0	2-0-0	W1
Oklahoma State	2-1-1	0.625	2-0-0	0-1-1	W2	7	9-1-3	0.808	7-0-1	2-1-2	0-0-0	W2
TCU	2-1-1	0.625	1-0-1	1-1-0	W1	7	8-4-1	0.654	4-1-1	4-3-0	0-0-0	W1
Baylor	2-1-0	0.667	1-0-0	1-1-0	W1	6	6-3-3	0.625	3-1-1	3-2-2	0-0-0	W1
West Virginia	2-1-0	0.667	1-0-0	1-1-0	W1	6	7-4-1	0.625	6-0-1	1-3-0	0-1-0	W1
Oklahoma	1-1-1	0.500	1-0-0	0-1-1	W1	4	6-4-3	0.577	3-1-1	3-3-2	0-0-0	W1
KANSAS	1-2-0	0.333	1-1-0	0-1-0	L1	3	9-4-0	0.692	6-2	3-1	0-1	L1
Iowa State	0-3-0	0.000	0-2-0	0-1-0	L3	0	3-9-0	0.250	1-3	2-6	0-0	L4
Kansas State	0-4-0	0.000	0-2-0	0-2-0	L4	0	2-9-2	0.231	2-5-0	0-4-2	0-0-0	L5

THIS WEEK IN THE BIG 12*All times central***Thursday, October 10**

Texas Tech at West Virginia [WVUsports.com], 6 p.m.
 Kansas at Oklahoma [FSOK], 7 p.m.
 Baylor at TCU [FSSW+], 7 p.m.

Sunday, October 11

Iowa State at Kansas State [Big 12 Now on ESPN+], 7 p.m.
 Oklahoma State at Texas [Longhorn Network], 7 p.m.

UNITED SOCCER COACHES POLL

OCT. 8, 2019

Rank	Team	Previous	Record
1.	Virginia (22)	1.	10-0-2
2.	Stanford (2)	2.	10-1-0
3.	North Carolina (3)	3.	11-1-0
4.	Southern California (1)	5.	9-1-1
5.	Florida State	6.	10-2-0
6.	BYU	4.	10-0-1
7.	South Carolina	7.	10-1-0
8.	Memphis	9.	12-1-0
9.	Clemson	8.	8-2-1
10.	Georgetown	11.	9-2-1
11.	Duke	10.	6-1-4
12.	Wisconsin	13.	9-2-1
13.	Arkansas	15.	9-2-1
14.	Texas Tech	18.	10-1-1
15.	Washington State	14.	9-2-0
16.	Louisville	19.	10-1-0
17.	Texas A&M	12.	9-2-2
18.	Oklahoma State	25.	9-1-3
19.	Florida	RV.	8-4-0
20.	Virginia Tech	23.	9-2-1
21.	Rutgers	NR.	9-2-1
22.	UCLA	16.	7-3-1
23.	Central Florida	RV.	8-2-2
24.	Santa Clara	NR.	6-5-1
25.	Arizona	RV.	7-3-0

Others receiving votes: KANSAS (47), Iowa (45), Michigan (43), Colorado (26), South Florida (25), California (22), Oregon State (15), Vanderbilt (14), Alabama (12), Saint Louis (11), Pepperdine (9), Baylor (6), SMU (5), North Texas (2), Wisconsin-Milwaukee (1), NC State (1)

Kansas 2019 opponents are in italics

RPI TOP-25

Rank	Team	Record
1.	Stanford	10-1-0
2.	North Carolina	11-1-0
3.	Florida St.	10-2-0
4.	Clemson	8-2-1
5.	Southern California	9-1-1
6.	Arkansas	9-2-1
7.	South Carolina	10-1-0
8.	Virginia Tech	9-2-1
9.	Wisconsin	9-2-1
10.	Brown	8-1-1
11.	Florida	8-4-0
12.	Virginia	10-0-2
13.	Louisville	10-1-0
14.	Washington State	9-2-0
15.	Duke	6-1-4
16.	BYU	10-0-1
17.	Texas Tech	10-1-1
18.	KANSAS	9-4-0
19.	Alabama	7-4-1
20.	South Florida	8-3-0
21.	Texas A&M	9-2-2
22.	NC State	6-4-2
23.	Georgetown	9-2-1
24.	Rutgers	9-2-1
25.	Oregon St.	9-1-1

RPI WATCH

RECORD VS.

RPI 1-25	0-1-0
RPI 26-50	3-1-0
RPI 51-100	3-2-0
RPI 101-150	3-0-0
RPI 150+	0-0-0

GOAL DIFFERENTIAL VS.

RPI 1-25	-2
RPI 26-50	+2
RPI 51-100	+6
RPI 101-150	+9
RPI 150+	-

BEST RESULTS

vs. #27 Memphis	W, 2-1
vs. #30 Florida Atlantic	W, 1-0
vs. #41 Baylor	W, 4-1

WORST RESULTS

vs. #59 DePaul	L, 0-1
vs. #58 Texas	L, 0-1

UPCOMING OPPONENTS

RPI	Team	Conference
54	at Oklahoma	Big 12
17	at Texas Tech	Big 12
149	Kansas State	Big 12
38	West Virginia	Big 12

KANSAS RANK
18

KANSAS
Strength of Schedule
19

BIG 12 RPI
4

RPI REVIEW

With the release of the season's second official Ratings Percentage Index (RPI) report by the NCAA this week, several good signs stick out for the Jayhawks. Kansas checked in at No. 18 on the list that takes numerous factors into account including strength of schedule, record against top-50 teams and home versus road record. In the first report released on Sept. 24, KU was slotted at No. 8, it's highest to start the year since the weekly RPI report became public in 2011.

This week's report shows that the Big 12 is among the nation's toughest conferences after the conclusion of nonconference play. The league tallied the fourth-highest ranking in the week's RPI and boasts eight of its 10 teams inside the top-65. The conference's high ranking also means the Jayhawks will get plenty of chances to up their national standing as three of their next four contests will be against teams currently ranked inside the top-60 of the RPI.

LET'S GET DEFENSIVE

In the first half of the 2019 season, the Jayhawks have once again proven to be a stout defensive team, carrying over the trend from their last several seasons. Kansas currently boasts a goals-against average of 1.00 this season, which encompasses five shutouts in those first 13 outings. The Jayhawks are allowing just over three opponent shots on goal per match.

KU has already put together several impressive shutout streaks to start this season. Kansas went 189-straight minutes without conceding a goal to start the year, and recently wrapped up a 295-minute opponent scoreless stretch. KU has tallied four opponent scoreless streaks of 300 minutes or more in the last five seasons.

BOUNCING BACK

The Jayhawks have been good bouncing back when they are coming off a loss, especially when they are playing on their home turf. KU has carried over this trend into this season, claiming wins following each of their three losses so far this season.

Since moving to Rock Chalk Park in 2014, Kansas is 9-3-2 when playing a home match following a loss. That includes a 4-0-0 since the start of the 2018 season.

The KU offense has also proven to be potent in games coming off being shutout. The Jayhawks have not been blanked in consecutive matches since 2015 and are 10-1-4 in matches coming off being shut out in that span.

KATIE McCLUTCH

Senior Katie McClure has firmly positioned herself as one of the most clutch players in program history. Already this season, the Wichita product has tallied five game-winning goals, including the winner in the final seconds against No. 20 Memphis on Aug. 26. These late-match heroics are nothing new for McClure, who has proved time and time again throughout her career that she performs best when the match is in its final stages.

Her goal against Kennesaw State on Sept. 22 marked the 16th game-winner of her career and has her at No. 1 on the Kansas all-time list.

Of McClure's 31-career goals, 10 of them have come in the final 15 minutes of regulation or overtime, which includes four golden goals last season.

TOP-25 TAKEDOWNS

The Aug. 29 over No. 20 Memphis marked the fourth-consecutive season the Jayhawks have tallied at least one victory over a team ranked among the top-25 in the nation.

Kansas is 8-15-2 against ranked foes since 2016, with seven of those losses coming against teams inside the top-10. Prior to this recent run, the Jayhawks managed just six victories over top-25 teams from 2010-15.

McCLURE MINUTES

Senior Katie McClure is putting an emphatic stamp on an already outstanding career at KU, having already posted nine goals (five game-winners) and three assists through her first 13 outings this

TOP DRAWER SOCCER POLL

OCT. 7, 2019

Rank	Team	Record	Conf.
1.	Virginia	10-0-2	2-0-2
2.	North Carolina	11-1-0	5-0-0
3.	Stanford	10-1-0	3-0-0
4.	Florida State	10-2-0	4-0-0
5.	USC	9-1-1	2-1-0
6.	South Carolina	10-1-0	4-0-0
7.	BYU	10-0-1	0-0-1
8.	Memphis	12-1-0	4-0-0
9.	Georgetown	9-2-1	3-0-0
10.	Louisville	10-1-0	3-1-0
11.	Washington State	9-2-0	2-1-0
12.	Duke	6-1-4	1-0-3
13.	Texas A&M	9-2-2	3-1-0
14.	Brown	8-1-1	2-0-0
15.	Wisconsin	9-2-1	5-0-0
16.	UCLA	7-3-1	1-2-0
17.	Clemson	8-2-1	2-2-0
18.	Virginia Tech	9-2-1	1-2-1
19.	Rutgers	9-2-1	3-2-0
20.	Colorado	9-2-1	1-1-1
21.	South Florida	8-3-0	3-1-0
22.	Vanderbilt	9-3-0	2-2-0
23.	Arkansas	9-2-1	3-1-0
24.	Florida	8-4-0	4-0-0
25.	Texas Tech	10-1-1	2-0-1

Others receiving votes: California (9-3-0), Oregon State (9-1-1), Oklahoma State (9-1-3), UCF (8-2-2), Michigan (9-3-1)

Kansas 2019 opponents are in italics

WEEK-BY-WEEK IN THE POLLS

	PS	1	2	3	4	5	6	7	8	9	10	FINAL
United Soccer Coaches	RV	18	11	18	14	17	21	RV				
Top Drawer Soccer	--	--	--	--	RV	RV	RV	--				
RPI	--	--	--	--	--	8	13	18				

BIG 12 PLAYER OF THE WEEK AWARDS

AUG. 27 Offensive . . . Katie McClure (KU) Defensive . . . Nikki Panas (OU) Freshman . . . Olyvia Dowell (OSU)	SEPT. 17 Offensive . . . Kirsten Davis (TTU) Defensive . . . Addisyn Merrick (KU) Freshman . . . Mira Emma (JSU)
SEPT. 3 Offensive . . . Kaylee Dao (OU) Defensive . . . Emily Alvarado (TCU) Freshman . . . Gracie Brian (TCU)	SEPT. 24 Offensive . . . Grace Yochum (OSU) Defensive . . . Jennifer Wandt (BU) Freshman . . . Madison White (TTU)
SEPT. 10 Offensive . . . Haley Berg (UT) Defensive . . . Kim Rodriguez (OSU) Freshman . . . Grace Collins (TCU)	OCT. 1 Offensive . . . Yazmeen Ryan (TCU) Defensive . . . Nicole Curry (UT) Freshman . . . Madison White (TTU)

OCT. 8 Offensive . . . Kaylee Dao (OU) Defensive . . . Madison White (TTU) Freshman . . . Elizabeth Kooiman (BU)	OCT. 29 Offensive . . . Defensive . . . Freshman . . .
OCT. 15 Offensive . . . Defensive . . . Freshman . . .	NOV. 1 Offensive . . . Defensive . . . Freshman . . .
OCT. 22 Offensive . . . Defensive . . . Freshman . . .	

season. Last year saw her make headlines across the state, the region and the nation. She led the Jayhawks with 11 goals, seven game-winning goals, 28 shots on goal and 25 points, figures that ranked the Wichita product among the top-10 in the Big 12 in their respective categories.

Thirteen matches into her career finale, she has already made big jumps on some impressive lists, creeping closer to inserting her name among the top offensive players in Jayhawk history. Her 31 career goals currently rank her second on Kansas' all-time goal scorer chart. McClure's 16 game-winning goals are the most ever for a Jayhawk.

KANSAS CAREER GOAL SCORING LEADERS

Rnk	Name (Yrs.)	Goals
1.	Caroline Smith (2002-05)	51
2.	Katie McClure (2016-Present)	31
3.	Liana Salazar (2011-15)	28
4.	Caroline Kastor (2010-13)	26
	Rachel Gilfillan (2001-04)	26

LATE MATCH MAGIC

The Jayhawks have been a clutch bunch so far this season, a trend which they have carried over from a year ago. Kansas has netted seven goals in the final 15 minutes of regulation, three of which have been game-winners.

The Jayhawks were also clutch in crunch time during the 2018 campaign. Thirteen of the Jayhawks' 28 goals scored came in the 60th minute or later. That number included 10 goals Kansas tallied in the final 10 minutes of regulation or in overtime.

The Jayhawks came out on top in seven of those matches that saw Kansas score in the 80th minute or later. KU netted five golden goals in 2018, four off the boot of senior forward Katie McClure and one from senior forward Eva Eliasdottir in KU's 2-1 win over TCU (10/12). McClure scored seven game-winners last season. Those seven game-winning strikes ranked her first among Big 12 players and were tied for the most by a Jayhawk in school history.

A TIP OF THE HAT

Katie McClure began her senior year with a bang on Aug. 22 when she netted her first-career hat trick against Nebraska. The feat is not one that many Jayhawks can say they've achieved as only nine hat tricks have been posted by Jayhawks in the first 24 years of the program.

In adding an assist to her three-goal outing, McClure tied the program record for points in a game. She became just the third Jayhawk to score seven points in a match, joining Shannon McCabe (2008) and Caroline Smith (2003).

The hat trick was also just the second in a Kansas season-opener. In 2003, Smith scored three times in a 4-1 KU win over Northwestern in Lawrence. She went on to score a program-record 19 goals that season, which led all players in the Big.

KU PICKED SIXTH IN BIG 12 PRESEASON COACHES' POLL

Kansas soccer was predicted to finish sixth in the 2019 league standings according to the Big 12 preseason coaches' poll which was released two weeks ago. The ranking marked the seventh time in the last eight years that KU has been picked sixth or higher in the conference's preseason poll.

Just three points separated the 2018 Big 12 Championship title-winning Mountaineers from the defending regular-season champion Bears at the top of the poll with 75 and 72 points, respectively. The Longhorns were slotted third with 65 total points ahead of TCU in fourth with 57 points. Texas Tech, Kansas and Oklahoma State were next at fifth, sixth and seventh, while Oklahoma, Iowa State and Kansas State rounded out the poll in the eighth, ninth and tenth spots.

PRESEASON BIG 12 COACHES POLL

RNK	TEAM (1ST PLACE VOTES)	POINTS
1	West Virginia	75
2	Baylor	72
3	Texas	65
4	TCU	57
5	Texas Tech	52
6	Kansas	44
7	Oklahoma State	33
8	Oklahoma	26
9	Iowa State	17
10	Kansas State	9

FIRST TO SCORE, WINS GALORE

Dating back to the beginning of the 2012 season, now at 157 games, Kansas has developed an interesting trend when it comes to which team tallies the first goal of the match. During that 157-game span, the Jayhawks were on the losing end only four times in contests which they put in the match's first goal. Kansas has amassed a record of 72-4-8 in those games (90.5 winning %), which includes seven of KU's wins this season.

UP NEXT

The Jayhawks will take on the No. 14-ranked Texas Tech Red Raiders in Lubbock on Oct. 13. Kickoff from John Walker Soccer Complex is slated for 1 p.m.

NCAA / BIG 12 RANKINGS

BIG 12 Top-10 (10.6.19); NCAA Top-100 (10.6.19)



TEAM

W-L-T Percentage (.692, 9-4-0)	3	66
Points Per Game (5.9)	5	62
Goals Per Game (2.1)	4	60
Assists Per Game (1.7)	4	69
Shots Per Game (14.7)	8	83
Shots on Goal Per Game (5.9)	8	-
Corners Per Game (5.9)	5	50
Offsides Per Game (1.8)	6	-
Fouls Per Game (8.8)	8	-
Goals-Against Avg. (1.00)	3	86
Saves Per Game (2.5)	9	-
Save Percentage (.717)	9	-
Shutouts (5)	3	-

INDIVIDUAL (ALL GAMES)

TOTAL POINTS
Katie McClure (24) 2 16

TOTAL GOALS
Katie McClure (9) 3 19

GAME-WINNING GOALS
Katie McClure (5) 1 2

SHOTS PER GAME
Katie McClure (3.3) 6 79

SHUTOUTS
Sarah Peters (4) 3 -

GOALS-AGAINST AVERAGE
Sarah Peters (0.96) 4 85

GAMES STARTED STREAKS

Player	Current	Career Long
Katie McClure	70	70
Ceri Holland	53	53
Sarah Peters	33	33
Kaela Hansen	33	33
Isabella Cavalcante	17	21
Addisyn Merrick	15	44
Sophie Maierhofer	12	12
Kailey Lane	7	7
Ellie Prybylski	6	6
Ebba Costow	1	4
Grace Wiltgen	1	1
Elise Reina	0	24
Eva Eliasdottir	0	20
Madison Meador	0	15
Kathryn Castro	0	6
Bri Amos	0	4
Mandi Duggan	0	4
Italia Bradley	0	2

CARD ACCUMULATIONS

Player	Yellow	Red
Isabella Cavalcante	1	0
Mandi Duggan	1	0
Ceri Holland	1	0
Katie McClure	1	0
Addisyn Merrick	1	0
Sarah Peters	1	0
Mya Sheridan	1	0

Yellow Accumulation Rule: Any player(s) or coach(es) who have received a total of **five cautions in one season** shall be suspended and shall not participate in the next regularly scheduled game, including postseason games.



HEAD COACH

MARK FRANCIS

21st SEASON AT KANSAS, 1999-PRESENT

Collegiate Record: 261-192-35 (.571)

At Kansas: 228-167-34 (.571) / **Big 12:** 87-88-14 (.497)

Alma Mater: SMU, 1987 / **Hometown:** London, England

Continuity is an essential part of a successful athletic program, and in his first 20 seasons at the helm of Kansas soccer, head coach Mark Francis has brought just that.

After taking over a program just past its infancy, Francis effectively etched his signature on Kansas soccer by becoming not only the winningest coach in its history, but leading his team to eight NCAA Tournaments, 16 Big 12 Championship Tournaments and helping 74 student-athletes garner all-conference accolades, including six that went on to earn All-America status.

Since 1999, Francis has amassed a 219-163-34 record, with 14 seasons of at least 10 victories. He is ranked second among active Big 12 coaches in wins at a single school. He also leads the league among active coaches with his 86 career Big 12 victories.

Francis' résumé is extensive, as he has coached and played at nearly all levels of the game. Francis worked his way up through the head coaching ranks wearing a whistle at the high school, junior college, Division I and professional levels. As a player, Francis was a three-time All-American at SMU and spent 10 seasons playing professionally in the APSL, the NPSL and the USISL.

After moving into its new, state-of-the-art facility at Rock Chalk Park in 2014, Francis' program took another step forward, elevating itself as one of the top teams in the Big 12 and a perennial top-25 NCAA squad. Now as the tenants of one of the top soccer facilities in the U.S., Francis and his staff are attracting some of the top talent from across the globe to Lawrence and the results over the last five seasons can back up the progress being made. Francis saw his Jayhawk team take the program even further in 2018 as he coached Kansas to its eighth NCAA Tournament appearance and their fifth in the second round of the Big Dance.

Francis helped his squad to their highest Big 12 finish in over a decade in 2016 as the Jayhawks posted a second-place finish on the league table, only suffering one loss in the conference season.

It was a season to remember for Francis and the Jayhawks in 2014, as he led his squad to one of the best seasons in program history. He picked up his 200th career coaching victory in KU's 4-1 win over Wake Forest and proceed to see his team reel off eight-straight wins to start the season, the best start in program history. His team ended the year with 15 victories, the third-most ever by a Jayhawk squad and made the program's sixth NCAA tournament appearance. Junior Liana Salazar also had a breakout season in becoming Kansas' sixth All-America honoree after she was named to the Third Team.

Francis tallied his 150th KU coaching victory in 2012 and led his squad to its 10th 10-win season during his tenure in Lawrence. Senior Whitney Berry became KU's all-time assists leader (32) and the program's 11th player to be named to the All-Big 12 First Team.

The 2008 season was one for the record books as Kansas recorded 13 wins and returned to the NCAA Tournament. The Jayhawks knocked off four nationally-ranked teams en route to their tournament berth, including a pair of wins over long-time nemesis Texas A&M. KU became the first team in three years to defeat the Aggies twice in the same season.

The Jayhawks topped four other ranked teams during the season and capped their remarkable run with a 2-1 triumph over Denver in the first round of the NCAA Tournament. Several players received accolades throughout and following the season. Freshman Emily Cressy was

named a Freshman All-American by Soccer Buzz as well as Soccer America, while teammates Monica Dolinsky and Johnson joined her on the All-Central Region Team. Dolinsky was also named All-Big 12 First Team, while Cressy became KU's first Big 12 Rookie of the Year.

The 2004 season was a year filled with program firsts as numerous records were broken. The Jayhawks compiled a program-best record of 18-5 on their way to the Big 12 Championship. It was the first for the soccer team and second among KU women's sports, the first going to basketball in 1997. Francis earned Big 12 Coach of the Year as well as the Central Region Coach of the Year honors. He also won his 100th overall match with a victory against Texas Tech on Oct. 1.

In 2003, Kansas soccer reached new heights under Francis' leadership. The Jayhawks posted an 18-6-1 mark and advanced to the Sweet 16 round of the NCAA Tournament. With a 6-3-1 record in the Big 12, KU finished third. Along with the team accomplishments, several players were honored for their efforts during the 2003 campaign, including Caroline Smith being named to several All-America teams as well as Holly Gault being selected as a Freshman All-American by Soccer Buzz. With Francis' help, KU's players etched their names in the record book, as Smith became the program's all-time leader in goals, points and game-winning goals and Miller set the school mark in career shutouts and career GAA.

In 2002, Francis led Kansas to an overall record of 11-7-2, including a then-school record six-straight wins and a seven-game unbeaten streak during the first half of the season. The Jayhawks opened the season 6-1-1, marking their best start ever. Francis' team ranked in the Central Region's Top 10 for 10 consecutive weeks.

KU IN THE FRANCIS ERA

14 seasons with 10 or more victories
 First-Ever Big 12 Championship in **2004**
Eight NCAA Tournament Appearances
 KU's First-Ever **Sweet 16** Appearance
 Achieved First-Ever **Top-10** Ranking
Six All-Americans
Four Freshman All-Americans
74 All-Big 12 Selections
25 NSCAA All-Central Region Players
Four Academic All-Americans
177 Academic All-Big 12 Selections
14-Time NSCAA Team Academic Award

In 2001, Francis guided the Jayhawks to a 13-7-0 overall record and a 7-3-0 Big 12 mark. For his efforts, Soccer Buzz named Francis the 2001 Central Region Coach of the Year, as he led his Jayhawks into the NCAA Tournament for the first time in school history. Kansas finished the season ranked sixth in the Central Region, marking the ninth-best turnaround in the nation, improving five games from the previous season.

A standout player in his own right, Francis is a 1987 graduate of Southern Methodist University where he was a three-time All-America selection for the Mustangs. As a senior, he was named SMU's Male Athlete of the Year, the Dallas All-Sports Association College Athlete of the Year and was selected to Soccer America's All-College MVP Team. In addition, he was a two-time nominee for the Hermann Trophy, given to the nation's most outstanding soccer player.

Professionally, Francis played 10 seasons as a member of the Dayton Dynamis (NPSL), Mobile Revelers, Dallas Rockets (USISL) and the Orlando Lions (APSL).

After being hired at South Alabama just a few weeks prior to the start of the 1996 season, Francis inherited a depleted roster and finished his first season with a 2-17 record. The following year, he led the Jaguars to an 18-3-1 mark, including an unbeaten regular season in Big South Conference play. The 16-win turnaround is still the biggest in NCAA Division I soccer history.

A native of London, England, Francis resides in Lawrence and has three children: Carlin (26), Hayley (24) and Caleb (22).

FRANCIS BY THE NUMBERS

Year	School	Record	Conf. Rec(Finish)	Conf. Tournament	NCAA
1996	South Alabama	2-17-0	--	--	--
1997	South Alabama	18-3-1	5-0-0 (1st)	Champion (2-0-0)	--
1998	South Alabama	13-5-0	5-0-0 (1st)	Semifinals (0-1-0)	--
1999	Kansas	8-10-1	3-6-1 (9th)	--	--
2000	Kansas	7-11-2	3-6-1 (18th)	Quarterfinals (0-1-0)	--
2001	Kansas	13-7-0	7-3-0 (4th)	Quarterfinals (0-1-0)	First Round (0-1-0)
2002	Kansas	11-7-2	4-5-1 (6th)	Quarterfinals (0-1-0)	--
2003	Kansas	18-6-1	6-3-1 (3rd)	Semifinals (1-1-0)	Sweet 16 (2-1-0)
2004	Kansas	18-5-0	8-2-0 (1st)	Semifinals (1-1-0)	Second Round (1-1-0)
2005	Kansas	11-7-2	6-3-1 (12nd)	Quarterfinals (0-1-0)	--
2006	Kansas	11-7-1	6-4-0 (4th)	Quarterfinals (0-0-1)	--
2007	Kansas	7-10-4	5-2-3 (13rd)	Quarterfinals (0-1-0)	--
2008	Kansas	13-8-2	4-5-1 (7th)	Semifinals (1-0-1)	Second Round (1-1-0)
2009	Kansas	12-8-2	4-6-0 (17th)	Quarterfinals (0-1-0)	--
2010	Kansas	6-13-0	1-9-0 (11th)	--	--
2011	Kansas	11-9-1	3-5-0 (16th)	Quarterfinals (0-0-1)	First Round (0-1-0)
2012	Kansas	10-8-2	3-5-0 (6th)	Quarterfinals (0-1-0)	--
2013	Kansas	7-11-2	2-5-1 (8th)	Quarterfinals (0-1-0)	--
2014	Kansas	15-6-0	5-3-0 (3rd)	Quarterfinals (0-1-0)	First Round (0-1-0)
2015	Kansas	10-9-2	3-4-1 (6th)	Final (2-1-0)	--
2016	Kansas	11-6-4	5-1-2 (2nd)	Quarterfinals (0-1-0)	Second Round (1-1-0)
2017	Kansas	8-9-3	3-5-1 (6th)	Quarterfinals (0-1-0)	--
2018	Kansas	12-6-3	5-4-0 (6th)	Quarterfinals (0-0-1)	Second Round (1-1-0)
2019	Kansas	9-4-0	1-2-0	--	--
At Kansas	21 seasons	228-167-34 (.571)	87-88-14 (.497)	5-14-4 (.212)	5-8-0 (.385)
OVERALL	24 seasons	261-192-35 (.571)	96-88-14 (.522)	7-15-4 (.346)	5-8-0 (.385)

CATEGORICAL RECORDS

	Big 12	Overall		Big 12	Overall
Overall	1-2-0	9-4-0	vs. RPI 1-25 opponents	0-0-0	0-1-0
Home	1-1-0	6-2-0	vs. RPI 26-50 opponents	1-1-0	3-1-0
Road	0-1-0	3-1-0	vs. RPI 51-100 opponents	0-1-0	3-2-0
Neutral Sites	0-0-0	0-1-0	vs. RPI 101-150 opponents	0-0-0	3-0-0
			vs. RPI 151+ opponents	0-0-0	0-0-0
On Thursdays	0-2-0	2-3-0	vs. UnitedSoccer ranked opponents	0-1-0	1-2-0
On Fridays	0-0-0	1-1-0	vs. UnitedSoccer Top-10 opponents	0-0-0	0-1-0
On Sundays	1-0-0	6-0-0	vs. UnitedSoccer unranked opponents	1-1-0	8-2-0
When Scoring First	1-0-0	7-0-0	vs. nonconference opponents	0-0-0	8-2-0
When Opponent Scores First	0-2-0	2-4-0	In one-goal games	0-1-0	4-2-0
When Leading at Half	1-0-0	5-0-0	In 90+ degrees	0-0-0	0-0-0
When Trailing at Half	0-1-0	2-1-0	In 80-89 degrees	1-0-0	2-1-0
When Tied at Half	0-1-0	1-2-0	In 70-79 degrees	0-1-0	5-2-0
In Regulation	1-2-0	9-4-0	In 60-69 degrees	0-1-0	2-1-0
In Overtime	0-0-0	0-0-0	In 50-59 degrees	0-0-0	0-0-0
			In sub-50 degrees	0-0-0	0-0-0
In August	0-0-0	3-0-0	Wearing white uniforms	0-1-0	2-2-0
In September	1-1-0	6-3-0	Wearing blue uniforms	0-0-0	5-1-0
In October	0-1-0	0-1-0	Wearing red uniforms	0-1-0	1-1-0
In November	0-0-0	0-0-0	Wearing alternate uniforms	1-0-0	1-0-0
When scoring zero goals	0-1-0	0-3-0	In televised games	1-2-0	8-3-0
When scoring one goal	0-0-0	2-0-0			
When scoring two goals	0-1-0	3-1-0			
When scoring three goals	0-0-0	1-0-0			
When scoring four goals or more	1-0-0	3-0-0			
When allowing zero goals	0-0-0	5-0-0			
When allowing one goal	1-1-0	4-2-0			
When allowing two goals	0-0-0	0-1-0			
When allowing three goals	0-0-0	0-0-0			
When allowing four goals or more	0-1-0	0-1-0			
When outshooting opponent	0-2-0	5-3-0			
When being outshot	1-0-0	4-1-0			
When tied in shots	0-0-0	0-0-0			

MISCELLANEOUS STATS

- QUICKEST GOAL:**
Katie McClure (2:54) vs. Nebraska, 8/22/19
- QUICKEST GOAL AGAINST:**
Stasia Mallin (8:44) of Memphis, 8/29/19
- GAME-WINNING GOALS AFTER 75':**
Katie McClure (88:54) vs. Memphis, 8/29/19
Kailey Lane (84:51) at Purdue, 9/8/19
Chais Wright (79:43) at W. Michigan, 9/15/19
- GAME-TYING GOALS AFTER 75':**
- GAME-WINNING GOALS AGAINST AFTER 75':**
- GAME-TYING GOALS AGAINST AFTER 75':**
- MULTI-GOAL GAMES:**
Katie McClure (3) vs. Nebraska, 8/22/19
Ceri Holland (2) vs. Loyola-Chicago, 8/25/19
Katie McClure (2) vs. Kennesaw State, 9/22/19
Mandi Duggan (2) vs. Baylor, 9/29/19
- MULTI-GOAL GAMES AGAINST:**
Charme Margan (2) vs. Oklahoma State, 10/3/19
- HAT TRICKS:**
Katie McClure vs. Nebraska, 8/22/19
- HAT TRICKS AGAINST:**
- OWN GOALS FOR:**
- OWN GOALS AGAINST:**
- RED CARDS:**
- OPPONENT RED CARDS:**

STARTERS - BY MATCH

	GK	F	F	M	M	M	D	D	D	D	D
Nebraska (8/22)	Peters	McClure	Amos	Costow	Maierhofer	Holland	Prybylski	Hansen	Merrick	Cavalcante	Reina
Loyola-Chicago (8/25)	Peters	McClure	Amos	Costow	Maierhofer	Holland	Prybylski	Hansen	Merrick	Cavalcante	Reina
Memphis (8/29)	Peters	McClure	Amos	Costow	Maierhofer	Holland	Prybylski	Hansen	Merrick	Cavalcante	Reina
Florida Atlantic (9/1)	Peters	McClure	Amos	Costow	Maierhofer	Holland	Reina	Hansen	Merrick	Meador	Cavalcante
DePaul (9/6)	Peters	McClure	Amos	Costow	Maierhofer	Holland	Bradley	Hansen	Merrick	Meador	Cavalcante
Purdue (9/8)	Peters	McClure	Lane	Castro	Maierhofer	Holland	Bradley	Hansen	Merrick	Meador	Cavalcante
Northwestern (9/13)	Peters	McClure	Lane	Castro	Maierhofer	Holland	Prybylski	Hansen	Merrick	Meador	Cavalcante
Western Michigan (9/15)	Peters	McClure	Lane	Castro	Maierhofer	Holland	Prybylski	Hansen	Merrick	Meador	Cavalcante
BYU (9/19)	Peters	McClure	Lane	Castro	Maierhofer	Holland	Prybylski	Hansen	Merrick	Meador	Cavalcante
Kennesaw State (9/22)	Peters	McClure	Lane	Castro	Maierhofer	Holland	Prybylski	Hansen	Merrick	Meador	Cavalcante
Texas (9/26)	Peters	McClure	Lane	Castro	Maierhofer	Holland	Prybylski	Hansen	Merrick	Meador	Cavalcante
Baylor (9/29)	Peters	McClure	Lane	Costow	Maierhofer	Holland	Prybylski	Hansen	Merrick	Cavalcante	Wiltgen
Oklahoma State (10/3)	Peters	McClure	Lane	Costow	Maierhofer	Holland	Prybylski	Hansen	Merrick	Cavalcante	Wiltgen
Oklahoma (10/10)											
Texas Tech (10/13)											
Kansas State (10/18)											
West Virginia (10/24)											
TCU (10/27)											
Iowa State (10/31)											

THE LAST TIME...

TEAM

Home Win.....	4-1 vs. Baylor, Sept. 29, 2019
Home Loss.....	0-1 vs. Texas, Sept. 16, 2019
Home Tie.....	1-1 vs. Oklahoma State, Oct. 9, 2016
Away Win.....	2-0 at Western Michigan, Sept. 15, 2019
Away Loss.....	2-5 at Oklahoma State, Oct. 3, 2019
Away Tie.....	0-0 (2 OT) at Cincinnati, Sept. 6, 2018
Neutral Win.....	3-0 vs. Oregon State, Aug. 24, 2018
Neutral Loss.....	0-1 vs. DePaul, Sept. 6, 2019
Neutral Tie.....	0-0 (2 OT) vs. Texas, Oct. 28, 2018
OT Win.....	2-1 (2OT) vs. Saint Louis, Nov. 9, 2018
OT Loss.....	1-2 (OT) vs. Texas Tech, Oct. 14, 2018
Played 2 OTs.....	2-1 (2OT) vs. Saint Louis, Nov. 9, 2018
Big 12 Win.....	4-1 vs. Baylor, Sept. 29, 2019
Big 12 Loss.....	2-5 vs. Oklahoma State, Oct. 3, 2019
Big 12 Tie.....	1-1 at Texas Tech, Sept. 24, 2017
Win over Top-25 team.....	2-1 vs. #20 Memphis, Aug. 29, 2019
Win over Top-10 team.....	2-1 vs. #9 Texas, Oct. 13, 2017
Scored 0 Goals.....	vs. Texas, Sept. 26, 2019
Scored 1 Goal.....	at Northwestern, Sept. 13, 2019
Scored 2 Goals.....	at Oklahoma State, Oct. 3, 2019
Scored 3 Goals.....	vs. Kennesaw State, Sept. 22, 2019
Scored 4 Goals.....	vs. Baylor, Sept. 29, 2019
Score 5+ Goals.....	6 vs. Loyola-Chicago, Aug. 25, 2019
Allowed 0 Goals.....	at Western Michigan, Sept. 15, 2019
Allowed 1 Goal.....	vs. Baylor, Sept. 29, 2019
Allowed 2 Goals.....	vs. BYU, Sept. 19, 2019
Allowed 3 Goals.....	at Baylor, Oct. 21, 2018
Allowed 4 Goals.....	at North Carolina, Nov. 16, 2018
Allowed 5+ Goals.....	5 at Oklahoma State, Oct. 6, 2019
Amassed 20+ Shots.....	31 at Western Michigan, Sept. 15, 2019
Amassed 30+ Shots.....	31 at Western Michigan, Sept. 15, 2019
Allowed 20+ Shots.....	(20) DePaul, Sept. 6, 2019
Allowed 30+ Shots.....	(33) Texas, Nov. 5, 2004
Amassed 10+ Shots on Goal.....	15 at Western Michigan, Sept. 15, 2019
Amassed 15+ Shots on Goal.....	15 at Western Michigan, Sept. 15, 2019
Allowed 10+ Shots on Goal.....	10 at Oklahoma State, Oct. 3, 2019
Allowed 15+ Shots on Goal.....	20 by Georgia, Aug. 29, 2010
Amassed 10+ Corner Kicks.....	10 at Iowa State, Sept. 29, 2017
Allowed 10+ Corner Kicks.....	12 vs. TCU, Nov. 1, 2017
Called for 15+ Fouls.....	15 vs. Oklahoma State, Oct. 3, 2019
Called for 25+ Fouls.....	25 vs. Oklahoma State, Oct. 9, 1998
Opponent Called for 15+ Fouls.....	(17) Texas Tech, Sept. 24, 2017
Opponent Called for 25+ Fouls.....	(27) Oklahoma State, Oct. 9, 2016
Scored 1 Penalty Kick.....	vs. Memphis, Aug. 29, 2019
Scored 2 Penalty Kicks.....	vs. Texas Tech, Sept. 23, 2016
Allowed 1 Penalty Kick.....	vs. Texas, Oct. 19, 2018
Allowed 2 Penalty Kicks.....	Oral Roberts, Sept. 27, 2009

INDIVIDUAL

Hat Trick.....	Katie McClure vs. Nebraska (Aug. 22, 2019)
Brace.....	(2) Mandi Duggan vs. Baylor (Sept. 29, 2019)
2 Assists.....	Katie McClure vs. Baylor (Sept. 19, 2019)
3 Assists.....	Whitney Berry vs. Texas (Sept. 30, 2011)
3 Points (Goal+Assist).....	Katie McClure vs. Purdue (Sept. 8, 2019)
5+ Points.....	(5) Ceri Holland vs. Loyola-Chicago (Aug. 25, 2019)
8+ Shots.....	(8) Grace Hagan at Cincinnati (Sept. 6, 2018)
10+ Shots.....	(12) Caroline Smith vs. Missouri (Oct. 28, 2005)
5+ Shots on Goal.....	(5) Grace Hagan vs. Saint Louis (Sept. 14, 2018)
Scored Penalty Kick.....	Ceri Holland vs. Memphis (Aug. 29, 2019)
Missed Penalty Kick.....	Ceri Holland vs. Texas (Oct. 19, 2018)
10+ Saves.....	(11) Kaitlyn Stroud vs. Oklahoma (Nov. 1, 2013)
Shutout.....	Sarah Peters at Western Michigan (Sept. 15, 2019)
Red Card.....	Hannah Lukinac at TCU (Sept. 22, 2017)

INDIVIDUAL OPPONENT

Hat Trick.....	Anna Canniglia, Nebraska (Oct. 23, 2009)
Brace.....	Charme Morgan, Oklahoma State (Oct. 3, 2019)
2 Assists.....	Jaci Jones, Oklahoma State (Oct. 3, 2019)
3+ Assists.....	(3) Julia Ashley, North Carolina (Nov. 16, 2018)
3 Points.....	Julia Ashley & Rachael Dorwart, North Carolina (Nov. 16, 2018)
5+ Points.....	(5) Amanda Hill, West Virginia (Oct. 16, 2015)
8+ Shots.....	(8) Nadia Gomes, BYU (Sept. 18, 2017)
10+ Shots.....	(13) Courtney Saunders, Baylor (Oct. 2, 1998)
5+ Shots on Goal.....	(6) Maddie Pokorny, Saint Louis (Nov. 9, 2017)
Scored Penalty Kick.....	Kayra Dollas, Texas (Oct. 19, 2018)
Missed Penalty Kick.....	Paula Leblic, Oregon State (Aug. 27, 2017)
10+ Saves.....	(13) Maggie Rogers, Western Michigan (Sept. 15, 2019)
Shutout.....	Nicole Curry, Texas (Sept. 26, 2019)
Red Card.....	Kassidie Stade, Oklahoma (Nov. 1, 2013)

OVERALL STATISTICS



2019 Kansas Soccer
Kansas Overall Individual Statistics (as of Oct 03, 2019)
All games



Overall: 9-4-0 Conf: 1-2-0 Home: 6-2-0 Away: 3-1-0 Neut: 0-1-0

##	Player	gp-gs	min	g	a	pts	sh	sh%	sog	sog%	yc	rc	gwg	pk-att	fg	ot	hat	gtg	foul	cnr
12	McClure, Katie	13-13	807	9	6	24	43	.209	15	.349	1	0	5	0-0	3	0	1	1	5	0
15	Holland, Ceri	13-13	933	4	3	11	32	.125	12	.375	1	0	0	2-2	0	0	0	1	3	1
4	Lane, Kailey	13-8	611	4	1	9	11	.364	6	.545	0	0	3	0-0	1	0	0	0	3	0
22	Duggan, Mandi	13-0	398	3	0	6	14	.214	9	.643	1	0	0	0-0	1	0	0	0	1	0
28	Amos, Bri	13-5	507	1	3	5	9	.111	5	.556	0	0	0	0-0	0	0	0	0	4	3
27	Maierhofer, Sophie	13-13	984	2	0	4	11	.182	4	.364	0	0	0	0-0	1	0	0	0	3	2
8	Costow, Ebba	13-7	550	1	2	4	2	.500	1	.500	0	0	0	0-0	0	0	0	0	1	24
2	Prybylski, Ellie	13-10	658	0	4	4	4	.000	1	.250	0	0	0	0-0	0	0	0	0	0	15
14	Barnett, Samantha	13-0	374	1	1	3	12	.083	6	.500	0	0	0	0-0	0	0	0	0	1	0
13	Castro, Kathryn	13-6	513	1	0	2	15	.067	7	.467	0	0	0	0-0	0	0	0	0	0	3
11	Wright, Chais	8-0	174	1	0	2	5	.200	3	.600	0	0	1	0-0	1	0	0	0	0	0
21	Cavalcante, Isabella	13-13	964	0	2	2	10	.000	3	.300	1	0	0	0-0	0	0	0	0	2	0
26	Merrick, Addisyn	13-13	1112	0	1	1	2	.000	0	.000	1	0	0	0-0	0	0	0	0	0	0
10	Briley, Gracely	6-0	122	0	0	0	6	.000	1	.167	0	0	0	0-0	0	0	0	0	0	2
19	Eliasdottir, Eva	6-0	185	0	0	0	3	.000	0	.000	0	0	0	0-0	0	0	0	0	0	0
7	Hall, Avery	6-0	87	0	0	0	3	.000	2	.667	0	0	0	0-0	0	0	0	0	0	0
6	Hansen, Kaela	13-13	926	0	0	0	3	.000	0	.000	0	0	0	0-0	0	0	0	0	2	0
23	Wiltgen, Grace	12-2	436	0	0	0	2	.000	1	.500	0	0	0	0-0	0	0	0	0	0	0
9	Meador, Madison	12-8	651	0	0	0	2	.000	0	.000	0	0	0	0-0	0	0	0	0	0	0
24	Reina, Elise	4-4	236	0	0	0	1	.000	1	1.000	0	0	0	0-0	0	0	0	0	0	8
16	Bradley, Italia	11-2	311	0	0	0	1	.000	0	.000	0	0	0	0-0	0	0	0	0	0	1
20	Giubilato, Margherit	3-0	38	0	0	0	0	.000	0	.000	0	0	0	0-0	0	0	0	0	0	0
18	Gavillet, Emilie	1-0	10	0	0	0	0	.000	0	.000	0	0	0	0-0	0	0	0	0	0	0
17	Beyer, Lia	3-0	63	0	0	0	0	.000	0	.000	0	0	0	0-0	0	0	0	0	0	0
3	Sheridan, Mya	7-0	73	0	0	0	0	.000	0	.000	1	0	0	0-0	0	0	0	0	0	0
1	Pasar, Melania	2-0	37	0	0	0	0	.000	0	.000	0	0	0	0-0	0	0	0	0	0	0
00	Peters, Sarah	13-13	1123	0	0	0	0	.000	0	.000	1	0	0	0-0	0	0	0	0	1	0
Total		13	-	27	23	77	191	.141	77	.403	7	0	9	2-2	7	0	1	2	121	-
Opponents		13	-	13	9	35	125	.104	46	.368	6	0	4	0-0	6	0	0	0	108	-

#	Goalie	gp-gs	Goal Average			Saves		Record			Shots faced	
			min	ga	gaavg	saves	pct	w	l	t sho/cbo		
18	Gavillet, Emilie	1-0	9:31	0	0.00	0	.000	0	0	0	0/1	0
00	Peters, Sarah	13-13	1123:43	12	0.96	31	.721	9	4	0	4/1	120
1	Pasar, Melania	2-0	36:46	1	2.45	0	.000	0	0	0	0/1	3
TM TEAM		-	0:00	0	0.00	2	1.000	0	0	0	1/0	0
Total		13	1170:00	13	1.00	33	.717	9	4	0	5	123
Opponents		13	1170:00	27	2.08	50	.649	4	9	0	3	189

Team saves: 2

Goals by Period	1st	2nd	Total
Kansas	13	14	27
Opponents	5	8	13

Corners by Period	1st	2nd	Total
Kansas	26	51	77
Opponents	23	24	47

Shots by Period	1st	2nd	Total
Kansas	83	108	191
Opponents	66	59	125

Fouls by Period	1st	2nd	Total
Kansas	56	65	121
Opponents	55	53	108

Saves by Period	1st	2nd	Total
Kansas	20	13	33
Opponents	23	27	50

Attendance Summary	KU	Opponent
Total	4580	2200
Dates/Avg Per Date	8/572	4/550
Neutral Site #/Avg	1/137	

CONFERENCE STATISTICS



2019 Kansas Soccer
Kansas Overall Individual Statistics (as of Oct 03, 2019)
Conference games



Overall: 1-2-0 Conf: 1-2-0 Home: 1-1-0 Away: 0-1-0 Neut: 0-0-0

##	Player	gp-gs	min	g	a	pts	sh	sh%	sog	sog%	yc	rc	gwg	pk-att	fg	ot	hat	gtg	foul	cnr
22	Duggan, Mandi	3-0	145	3	0	6	4	.750	3	.750	0	0	0	0-0	1	0	0	0	0	0
12	McClure, Katie	3-3	218	0	3	3	9	.000	1	.111	1	0	0	0-0	0	0	0	0	0	0
15	Holland, Ceri	3-3	233	1	0	2	6	.167	3	.500	1	0	0	0-0	0	0	0	0	0	1
4	Lane, Kailey	3-3	155	1	0	2	3	.333	1	.333	0	0	1	0-0	0	0	0	0	0	0
8	Costow, Ebba	3-2	128	1	0	2	1	1.000	1	1.000	0	0	0	0-0	0	0	0	0	0	8
2	Prybylski, Ellie	3-3	156	0	1	1	3	.000	1	.333	0	0	0	0-0	0	0	0	0	0	5
28	Amos, Bri	3-0	92	0	1	1	0	.000	0	.000	0	0	0	0-0	0	0	0	0	0	1
14	Barnett, Samantha	3-0	96	0	0	0	3	.000	2	.667	0	0	0	0-0	0	0	0	0	0	0
21	Cavalcante, Isabella	3-3	270	0	0	0	2	.000	1	.500	0	0	0	0-0	0	0	0	0	0	0
19	Eliasdottir, Eva	3-0	102	0	0	0	2	.000	0	.000	0	0	0	0-0	0	0	0	0	0	0
27	Maierhofer, Sophie	3-3	270	0	0	0	1	.000	0	.000	0	0	0	0-0	0	0	0	0	0	0
23	Wiltgen, Grace	3-2	137	0	0	0	1	.000	0	.000	0	0	0	0-0	0	0	0	0	0	0
13	Castro, Kathryn	3-1	119	0	0	0	1	.000	0	.000	0	0	0	0-0	0	0	0	0	0	2
26	Merrick, Addisyn	3-3	264	0	0	0	0	.000	0	.000	0	0	0	0-0	0	0	0	0	0	0
16	Bradley, Italia	3-0	56	0	0	0	0	.000	0	.000	0	0	0	0-0	0	0	0	0	0	0
11	Wright, Chais	1-0	21	0	0	0	0	.000	0	.000	0	0	0	0-0	0	0	0	0	0	0
9	Meador, Madison	2-1	39	0	0	0	0	.000	0	.000	0	0	0	0-0	0	0	0	0	0	0
6	Hansen, Kaela	3-3	187	0	0	0	0	.000	0	.000	0	0	0	0-0	0	0	0	0	0	0
3	Sheridan, Mya	1-0	10	0	0	0	0	.000	0	.000	1	0	0	0-0	0	0	0	0	0	0
Total		3	-	6	5	17	36	.167	13	.361	3	0	1	0-0	1	0	0	0	25	-
Opponents		3	-	7	6	20	37	.189	19	.514	4	0	2	0-0	2	0	0	0	26	-

#	Goalie	gp-gs	Goal Average			Saves		Record				Shots faced
			min	ga	gaavg	saves	pct	w	l	t	sho/cbo	
00	Peters, Sarah	3-3	270:00	7	2.33	11	.611	1	2	0	0/0	36
TM	TEAM	-	0:00	0	0.00	1	1.000	0	0	0	0/0	0
Total		3	270:00	7	2.33	12	.632	1	2	0	0	36
Opponents		3	270:00	6	2.00	7	.538	2	1	0	1	36

Team saves: 1

Goals by Period

	1st	2nd	Total
Kansas	1	5	6
Opponents	3	4	7

Shots by Period

	1st	2nd	Total
Kansas	13	23	36
Opponents	23	14	37

Saves by Period

	1st	2nd	Total
Kansas	6	6	12
Opponents	2	5	7

Corners by Period

	1st	2nd	Total
Kansas	5	12	17
Opponents	7	7	14

Fouls by Period

	1st	2nd	Total
Kansas	11	14	25
Opponents	12	14	26

Attendance Summary

	KU	Opponent
Total	1448	741
Dates/Avg Per Date	2/724	1/741
Neutral Site #/Avg	0/0	

KANSAS TEAM STATS GAME-BY-GAME

Date	Opponent	Score	G	A	Pts	Sh	Sh%	Sog	Sog%	GW	GT	UA	OT	PK-Att	YC	RC	Min
Aug 22, 2019	NEBRASKA	4-0	4	3	11	15	.267	6	.400	1	0	2	0	0-0	0	0	991
Aug 25, 2019	LOYOLA-CHICAGO	6-0	6	6	18	23	.261	12	.522	1	0	2	0	1-1	0	0	991
Aug 29, 2019	MEMPHIS	2-1	2	1	5	10	.200	7	.700	1	1	1	0	1-1	1	0	991
Sep 01, 2019	FLORIDA ATLANTIC	1-0	1	2	4	4	.250	1	.250	1	0	0	0	0-0	0	0	990
Sep 06, 2019	vs DePaul	0-1	0	0	0	20	.000	3	.150	0	0	0	0	0-0	0	0	990
Sep 08, 2019	at Purdue	2-1	2	3	7	13	.154	5	.385	1	1	0	0	0-0	2	0	989
Sep 13, 2019	at Northwestern	1-0	1	1	3	8	.125	4	.500	1	0	0	0	0-0	1	0	991
Sep 15, 2019	at Western Michigan	2-0	2	1	5	31	.065	15	.484	1	0	1	0	0-0	0	0	990
Sep 19, 2019	BYU	0-2	0	0	0	12	.000	4	.333	0	0	0	0	0-0	0	0	1003
Sep 22, 2019	KENNESAW STATE	3-1	3	1	7	19	.158	7	.368	1	0	2	0	0-0	0	0	989
Sep 26, 2019	TEXAS	0-1	0	0	0	12	.000	1	.083	0	0	0	0	0-0	0	0	989
Sep 29, 2019	BAYLOR	4-1	4	4	12	10	.400	5	.500	1	0	1	0	0-0	1	0	989
Oct 03, 2019	at Oklahoma State	2-5	2	1	5	14	.143	7	.500	0	0	1	0	0-0	2	0	990
		27-13	27	23	77	191	.141	77	.403	9	2	10	0	2-2	7	0	12883
Opponent			13	9	35	125	.104	46	.368	4	0	6	0	0-0	6	0	-

TEAM PER-GAME

Games played: 13

Shots per game: 14.69;Goals per game: 2.08

Assists per game: 1.77;Points per game: 5.92

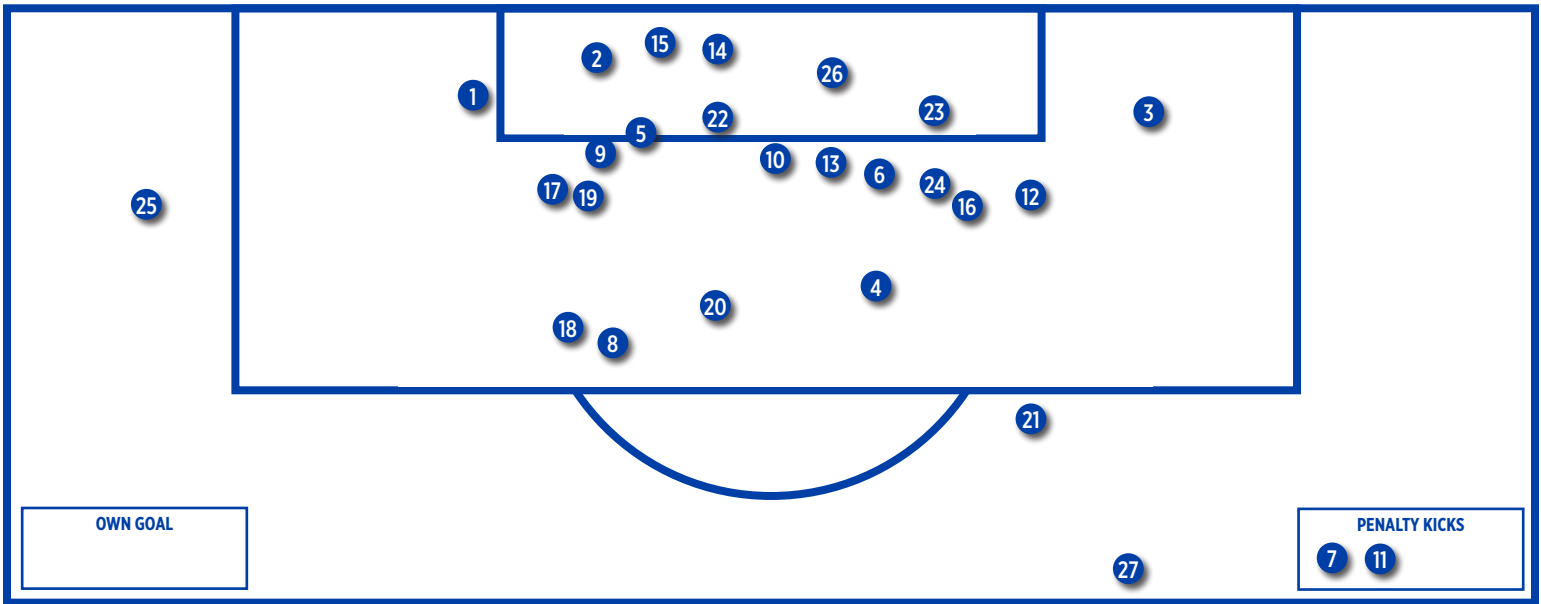
Date	Opponent	Score	Minutes	GA	GAAvg	Saves	Save%	W	L	T	Sho	Faced
Aug 22, 2019	NEBRASKA	4-0	90:00	0	0.00	3	1.000	1	0	0	1	12
Aug 25, 2019	LOYOLA-CHICAGO	6-0	90:00	0	0.00	0	.000	1	0	0	1/3	3
Aug 29, 2019	MEMPHIS	2-1	90:00	1	0.33	2	.667	1	0	0	-	11
Sep 01, 2019	FLORIDA ATLANTIC	1-0	90:00	0	0.25	2	1.000	1	0	0	1	9
Sep 06, 2019	vs DePaul	0-1	90:00	1	0.40	0	.000	0	1	0	-	5
Sep 08, 2019	at Purdue	2-1	90:00	1	0.50	7	.875	1	0	0	-	18
Sep 13, 2019	at Northwestern	1-0	90:00	0	0.43	3	1.000	1	0	0	1	3
Sep 15, 2019	at Western Michigan	2-0	90:00	0	0.38	1	1.000	1	0	0	1	5
Sep 19, 2019	BYU	0-2	90:00	2	0.56	2	.500	0	1	0	-	16
Sep 22, 2019	KENNESAW STATE	3-1	90:00	1	0.60	1	.500	1	0	0	-	5
Sep 26, 2019	TEXAS	0-1	90:00	1	0.64	4	.800	0	1	0	-	9
Sep 29, 2019	BAYLOR	4-1	90:00	1	0.67	3	.750	1	0	0	-	15
Oct 03, 2019	at Oklahoma State	2-5	90:00	5	1.00	5	.500	0	1	0	-	12
		27-13	1170:00	13	1.00	33	.717	9	4	0	5	123
Opponent			1170:00	27	1.00	50	.649	4	9	0	3	189

KANSAS GAME-BY-GAME COMPARISON (KANSAS/OPPONENT)

Date	Opponent	Score	Goals	Assists	Shots	On Goal	Corners	CKgoals	Fouls	YC	RC	Offside
Aug 22	NEBRASKA	4-0	4/0	3/0	15/13	6/3	3/5	0/0	9/4	0/0	0/0	4/3
Aug 25	LOYOLA-CHICAGO	6-0	6/0	6/0	23/3	12/0	8/2	1/0	10/8	0/0	0/0	0/1
Aug 29	MEMPHIS	2-1	2/1	1/0	10/11	7/3	4/4	0/1	18/14	1/0	0/0	1/1
Sep 01	FLORIDA ATLANTIC	1-0	1/0	2/0	4/9	1/2	8/4	0/0	8/13	0/1	0/0	4/1
Sep 06	DePaul	0-1	0/1	0/0	20/5	3/1	9/2	0/0	6/6	0/0	0/0	1/0
Sep 08	Purdue	2-1	2/1	3/1	13/18	5/8	3/3	0/0	13/11	2/0	0/0	3/3
Sep 13	Northwestern	1-0	1/0	1/0	8/3	4/3	6/4	0/0	7/10	1/0	0/0	0/1
Sep 15	Western Michigan	2-0	2/0	1/0	31/5	15/1	6/2	0/0	13/7	0/0	0/0	2/0
Sep 19	BYU	0-2	0/2	0/1	12/16	4/4	6/5	0/0	6/5	0/1	0/0	4/3
Sep 22	KENNESAW STATE	3-1	3/1	1/1	19/5	7/2	7/2	0/0	6/4	0/0	0/0	4/0
Sep 26	TEXAS	0-1	0/1	0/2	12/9	1/5	9/3	0/0	5/8	0/1	0/0	2/1
Sep 29	BAYLOR	4-1	4/1	4/1	10/15	5/4	4/9	1/1	5/9	1/2	0/0	2/4
Oct 03	Oklahoma State	2-5	2/5	1/3	14/13	7/10	4/2	0/1	15/9	2/1	0/0	0/2
		27-13	27/13	23/9	191/125	77/46	77/47	2/3	121/108	7/6	0/0	27/20

Note: Game totals are displayed in the format TEAM/OPPONENT for each category

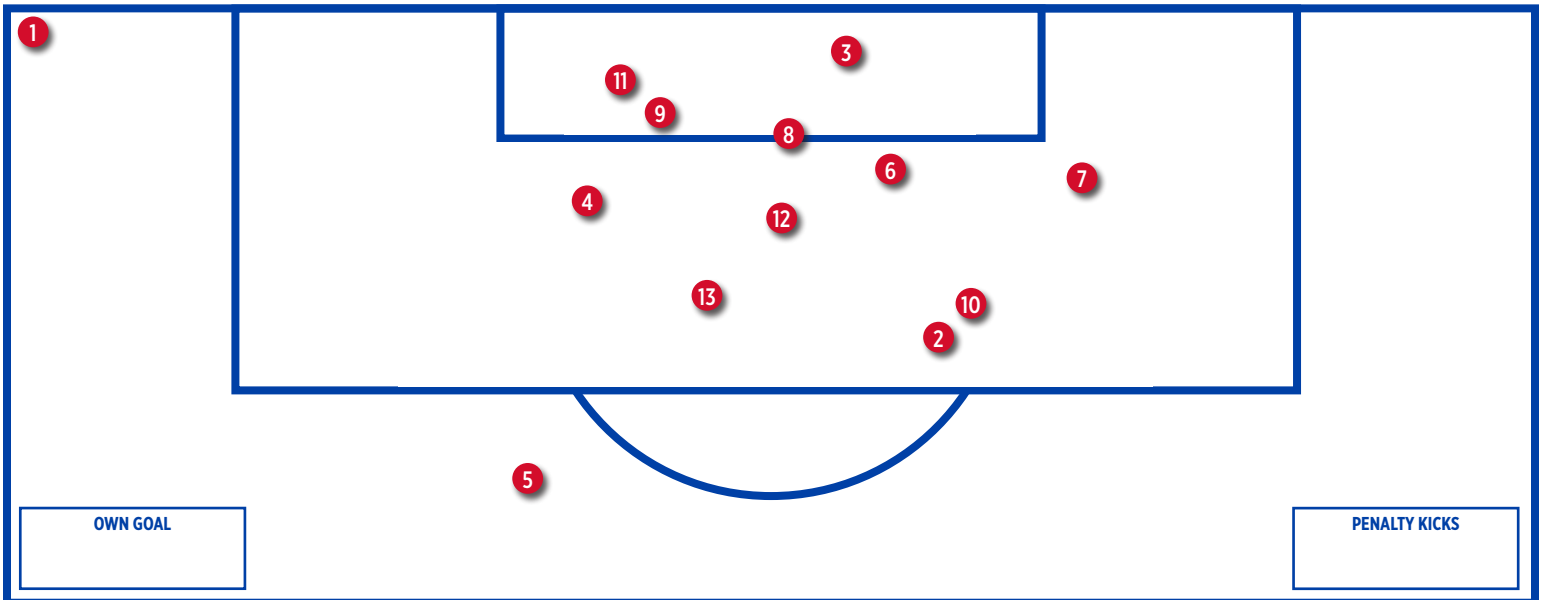
KANSAS GOAL CHART



KANSAS GOAL INFORMATION

- | | | |
|--|---|---|
| 1 - Katie McClure (Amos) vs. Nebraska, 2:54 | 11 - Ceri Holland (penalty) vs. Memphis, 51:42 < | 21 - Katie McClure (unassisted) vs. Kennesaw State, 55:38 |
| 2 - Bri Amos (McClure, Holland) vs. Nebraska, 8:07 | 12 - Katie McClure (Cavalcante) vs. Memphis, 88:54 | 22 - Mandi Duggan (Amos) vs. Baylor, 29:09 |
| 3 - Katie McClure (unassisted) vs. Nebraska, 24:18 | 13 - Katie McClure (Amos, Cavalcante) vs. Florida Atlantic, 12:21 | 23 - Kailey Lane (McClure, Prybylski) vs. Baylor, 49:52 |
| 4 - Katie McClure (unassisted) vs. Nebraska, 77:40 | 14 - Katie McClure (Barnett) vs. Purdue, 58:14 | 24 - Mandi Duggan (McClure) vs. Baylor, 80:42 |
| 5 - Katie McClure (Holland) vs. Loyola-Chicago, 3:27 | 15 - Kailey Lane (Prybylski, McClure) vs. Purdue, 84:51 | 25 - Ebba Costow (unassisted) vs. Baylor, 89:59 * |
| 6 - Sophie Maierhofer (McClure, Prybylski) vs. Loyola-Chicago, 26:59 | 16 - Kailey Lane (Prybylski) vs. Northwestern, 24:06 * | 26 - Ceri Holland (McClure) vs. Oklahoma St., 52:38 |
| 7 - Ceri Holland (unassisted) vs. Loyola-Chicago, 27:22 < | 17 - Chais Wright (unassisted) vs. Western Michigan, 79:43 * | 27 - Mandi Duggan (unassisted) vs. Oklahoma St., 61:22 |
| 8 - Kathryn Castro (Lane, Merrick) vs. Loyola-Chicago, 34:41 | 18 - Samantha Barnett (Costow) vs. Western Michigan, 80:29 | |
| 9 - Kailey Lane (unassisted) vs. Loyola-Chicago, 41:22 | 19 - Sophie Maierhofer (Holland) vs. Kennesaw State, 7:47 | |
| 10 - Ceri Holland (Costow) vs. Loyola-Chicago, 53:04* | 20 - Katie McClure (unassisted) vs. Kennesaw State, 17:00 | |

OPPONENT GOAL CHART



OPPONENT GOAL INFORMATION

- | | |
|--|---|
| 1 - Stasia Mallin (Memphis), 8:44 * | 11 - Julia Lenhardt (Oklahoma St), 31:01 + |
| 2 - Jade Eriksen-Russo (DePaul), 45:26 | 12 - Charme Morgan (Oklahoma St), 52:08 |
| 3 - Hannah Melchiorre (Purdue), 20:57 * | 13 - Gabriella Coleman (Oklahoma St), 70:11 |
| 4 - Elise Flake (BYU), 45:33 | |
| 5 - Mikayla Colohan (BYU), 47:14 | |
| 6 - Camryn Simmons (Kennesaw State), 73:32 | |
| 7 - Cyera Hintzen (Texas), 69:36 + | |
| 8 - Michaela Gorman (Baylor), 85:38 * | |
| 9 - Camy Huddleston (Oklahoma St), 9:52 * | |
| 10 - Charme Morgan (Oklahoma St), 28:28 | |

Key: + Off free kick, < Penalty Kick, * Off Corner

SINGLE MATCH INDIVIDUAL RECORDS

POINTS

No.	Player	Points
1.	Katie McClure (vs. Nebraska, Aug. 22, 2019)	7
	Shannon McCabe (vs. Francis Marion, Oct. 19, 2008)	7
	Caroline Smith (vs. Northwestern, Aug. 29, 2003)	7
3.	Grace Hagan (vs. Saint Louis, Sept. 14, 2018)	6
	Monica Dolinsky (at Missouri, Oct. 15, 2006)	6
	Jessica Smith (vs. Oklahoma State, Oct. 7, 2005)	6
	Caroline Smith (vs. Florida State, Sept. 12, 2003)	6
	Monica Brothers (at Oklahoma State, Sept. 30, 2001)	6
	Natalie Hoogveld (at Colorado, Oct. 14, 2001)	6
	Brianna Valento (vs. St. Louis, Oct. 30, 2001)	6

GOALS

No.	Player	Goals
1.	Katie McClure (vs. Nebraska, Aug. 22, 2019)	3
	Grace Hagan (vs. Saint Louis, Sept. 14, 2018)	3
	Shannon McCabe (vs. Francis Marion, Oct. 19, 2008)	3
	Jessica Smith (vs. Oklahoma State, Oct. 7, 2005)	3
	Caroline Smith (vs. Florida State, Sept. 12, 2003)	3
	Caroline Smith (vs. Northwestern, Aug. 29, 2003)	3
	Brianna Valento (vs. St. Louis, Oct. 30, 2001)	3
	Natalie Hoogveld (at Colorado, Oct. 14, 2001)	3
	Monica Brothers (vs. Oklahoma State, Sept. 30, 2001)	3

ASSISTS

No.	Player	Goals
1.	Hilla Rantala (at Oklahoma State, Sept. 30, 2001)	4
2.	Whitney Berry (vs. Texas, Sept. 30, 2011)	3
	Monica Dolinsky (vs. Texas A&M, Nov. 5, 2008)	3
	Jessica Bush (vs. UAB, Sept. 5, 2008)	3
	Hilla Rantala (vs. St. Louis, Oct. 30, 2001)	3
	Melanie Schroeder (vs. UNLV, Sept. 7, 2001)	3

SHOTS

No.	Player	Shots
1.	Caroline Smith (vs. Missouri, Oct. 28, 2005)	12
2.	Caroline Smith (vs. Colorado, Sept. 27, 2002)	10
	Denise Cooke (vs. CMSU, Oct. 13, 1995)	10

SHOTS ON GOAL

No.	Player	SOG
1.	Caroline Smith (vs. Missouri, Oct. 28, 2005)	7
2.	Caroline Smith (at Mississippi State, Sept. 8, 2002)	6
3.	Grace Hagan (vs. Saint Louis, Sept. 14, 2018)	5
	Ingrid Vidal (at Missouri, Oct. 21, 2011)	5
	Jessica Smith (vs. Oklahoma State, Oct. 7, 2005)	5
	Caroline Smith (vs. UC Irvine, Sept. 16, 2005)	5

	Caroline Smith (vs. Baylor, Oct. 3, 2004)	5
	Nicole Cauzillo (vs. Texas Tech, Oct. 1, 2004)	5
	Caroline Smith (vs. Colorado, Sept. 27, 2002)	5
	Monica Brothers (vs. North Texas, Aug. 31, 2001)	5

SAVES

No.	Player	Saves
1.	Betsy Pollard (at Texas Tech, Oct. 3, 1999)	16
2.	Kat Liebetrau (at Georgia, Aug. 29, 2010)	15
	Laura Rohde (at Mississippi, Oct. 29, 1999)	15
	Jen Fecke (vs. UTEP, Oct. 6, 1996)	15
5.	Betsy Pollard (at Georgia, Sept. 17, 1999)	14
	Betsy Pollard (at Utah, Sept. 3, 1999)	14
	Jen Fecke (at Baylor, Sept. 14, 1997)	14

INDIVIDUAL STREAKS

Consecutive Matches w/ a Point	9
(Hilla Rantala, Aug. 31-Oct. 5, 2001)	
Consecutive Matches w/ a Goal	.5 (twice)
(Liana Salazar, Aug. 22 - Sept. 5 2014)	
(Hilla Rantala, Sept. 1-Sept. 23, 2001)	
Consecutive Matches w/ an Assist	4
(Whitney Berry, Sept. 27-Oct. 9, 2009)	

Single Match Team Records

Points	19
(vs. Francis Marion, Oct. 19, 2008)	
Goals	7
(vs. Francis Marion, Oct. 19, 2008)	
Assists	6 (five times)
(last vs. Loyola Chicago, Aug. 25, 2019)	
Shots	36
(vs. Michigan, Aug. 26, 2005)	
Shots on Goal	20
(vs. Wyoming, Aug. 29, 1999)	
Saves	16
(at Texas Tech, Oct. 3, 1999)	
Shots Allowed	45
(at Nebraska, Sept. 22, 1995)	
Shots on Goal Allowed	19
(at Nebraska, Oct. 15, 1999)	
Fewest Shots	0
(at Virginia, Sept. 19, 1997)	
Fewest Shots on Goal	.0 (3 times)
(vs. Baylor, Oct. 15, 2017), (vs. West Virginia, Nov. 6, 2013), (at Virginia, Sept. 19, 1997)	
Corner Kicks	21
(vs. Baylor, Sept. 23, 2005)	
Fouls	25
(at Oklahoma State, Oct. 9, 1998)	
Goals (In Defeat)	4
(vs. Nebraska, Oct. 23, 2009 [L, 4-7])	
Goals (Both Teams)	11
(vs. Nebraska, Oct. 23, 2009 [L, 4-7])	
Goals Allowed	8 (twice)
(at Nebraska, Oct. 15, 1999), (at Nebraska, Sept. 22, 1995)	

Consecutive Matches w/ a GWG 4
(Katie McClure, Aug. 22-Sept. 1, 2019)

Consecutive Shutouts 5
(Meghan Miller, Aug. 28-Sept. 9, 2004)

OPPONENT HIGHS

Points 7
(Anna Caniglia, Nebraska, Oct. 23, 2009)

Goals 3 (nine times)
Last: (Anna Caniglia, Nebraska, Oct. 23, 2009)

Assists 3
(Julia Ashley, North Carolina, Nov. 16, 2018)
(Kristen Koop, Texas A&M, Sept. 13, 1996)
(Sandy Smith, Nebraska, Sept. 22, 1995)

Shots 13
(Courtney Saunders, Baylor, Oct. 2, 1998)

Shots on Goal 6 (two times)
(Maddie Pokorny, Saint Louis, Nov. 9, 2018)
(Becky Nelson, Oklahoma, Oct. 24, 2003)

Saves 16
(Amanda Vandervort, Wyoming, Aug. 29, 1999)

Goals Allowed (In Victory) 3 (three times)
(vs. Duke, Sept. 10, 2006 [W, 4-3])
(at Oklahoma State, Sept. 30, 2001 [W, 5-3])
(vs. Colorado, Sept. 28, 1997 [W, 4-3])

First Half Goals 5
(vs. Loyola-Chicago, Aug. 25, 2019)

Second Half Goals 5
(vs. Francis Marion, Oct. 19, 2008)

Margin of Victory 7
(vs. Francis Marion, Oct. 19, 2008 [W, 7-0])

Margin of Defeat 7 (twice)
(at Nebraska, 10/15/1999 [-8, L]), (at Nebraska, 9/22/1995 [-8, L])

Quickest Goal 0:18
(Caroline Kastor, at Colorado, Oct. 25, 2010)

Quickest Goal Allowed 0:11
(Whitney Palmer, Oklahoma, Oct. 10, 2010)

Quickest Goal (Second Half) 45:11
(Shayna Teutsch, at UTEP, Oct. 6, 1996)

Quickest Goal Allowed (Second Half) 45:33
(Elise Flake, BYU, Sept. 19, 2019)

Quickest Goal (Overtime) 91:55
(Kim Boyer, vs. Missouri State, Sept. 18, 2007)

Quickest Goal Allowed (Overtime) 92:03
(Kasey Langdon, Oklahoma St., Oct. 10, 2008)

Shortest Span Between Goals 0:15
(Lindsey Horner, Carmel Kaplinger vs. Iowa State, Sept. 29, 2000)

Shortest Span Between Goals Allowed 0:14
(Katie Baruth and Carol Ditch, Texas, Sept. 15, 1996)

Shortest Span Between Goals (Both Teams) 0:08
(KayAnne Gummertsall, Duke and Holly Gault, Kansas, Sept. 10, 2006)

Attendance (Home) 2,514
(vs. Kansas State, Oct. 6, 2017)

Attendance (Away) 5,205
(at Saint Louis, Sept. 8, 2017)

SINGLE SEASON RECORDS

POINTS

No.	Player	Points
1.	.Caroline Smith (2003) (19 goals, 3 assists)	41
2.	.Caroline Smith (2004) (11 goals, 10 assists)	32
	.Hilla Rantala (2001) (10 goals, 12 assists)	32
4.	.Liana Salazar (2014) (13 goals, 4 assists)	30
5.	.Whitney Berry (2011) (8 goals, 13 assists)	29
6.	.Ingrid Vidal (2011) (11 goals, 6 assists)	28
	.Monica Dolinsky (2008) (9 goals, 10 assists)	28
8.	.Emily Cressy (2009) (12 goals, 3 assists)	27
	.Caroline Smith (2002) (12 goals, 3 assists)	27
10.	.Caroline Smith (2005) (9 goals, 8 assists)	26

GOALS

No.	Player	Goals
1.	.Caroline Smith (2003)	19
2.	.Liana Salazar (2014)	13
3.	.Emily Cressy (2009)	12
	.Caroline Smith (2002)	12
5.	.Katie McClure (2018)	11
	.Caroline Kastor (2012)	11
	.Ingrid Vidal (2011)	11
	.Caroline Smith (2004)	11
9.	.Hilla Rantala (2001)	10
10.	.Katie McClure (2019)	9
	.Monica Dolinsky (2008)	9
	.Shannon McCabe (2008)	9
	.Caroline Smith (2005)	9
	.Monica Brothers (2001)	9

GAME-WINNING GOALS

No.	Player	GWG
1.	.Katie McClure (2018)	7
	.Caroline Smith (2003)	7
3.	.Katie McClure (2019)	5
	.Caroline Kastor (2012)	5
	.Emily Cressy (2009)	5
	.Rachel Gilfillan (2004)	5
7.	.Eight Times	4

ASSISTS

No.	Player	Assists
1.	.Whitney Berry (2011)	13
2.	.Hilla Rantala (2001)	12
3.	.Monica Dolinsky (2009)	10
	.Monica Dolinsky (2008)	10
	.Caroline Smith (2004)	10
6.	.Whitney Berry (2009)	9
7.	.Caroline Smith (2005)	8
	.Melanie Schroeder (2000)	8
	.Meghann Haven (1999)	8
10.	.Ali Kimura (2014)	7
	.Whitney Berry (2012)	7
	.Caroline Kastor (2011)	7
	.Jessica Bush (2008)	7
	.Holly Gault (2006)	7
	.Lauren Williams (2004)	7

SHOTS

No.	Player	Shots
1.	.Caroline Smith (2005)	98
2.	.Caroline Smith (2004)	92
3.	.Whitney Berry (2011)	85
	.Caroline Smith (2003)	85
5.	.Monica Dolinsky (2008)	79
6.	.Emily Cressy (2009)	73
7.	.Monica Dolinsky (2009)	71
8.	.Denise Cooke (1995)	68
9.	.Whitney Berry (2012)	66
10.	.Whitney Berry (2010)	65

SHOTS ON GOAL

No.	Player	SOG
1.	.Caroline Smith (2003)	46
2.	.Caroline Smith (2004)	45
3.	.Caroline Smith (2005)	43
4.	.Emily Cressy (2009)	42
5.	.Whitney Berry (2011)	41
6.	.Monica Dolinsky (2008)	37
7.	.Caroline Kastor (2012)	32
	.Caroline Smith (2002)	32
9.	.Whitney Berry (2012)	30
	.Hilla Rantala (2001)	30

* - Individual shots on goal kept since 1999

MINUTES PLAYED (FIELD)

No.	Player	Minutes
1.	.Estelle Johnson (2008)	2,110
2.	.Shelby Williamson (2009)	2,012
3.	.Estelle Johnson (2009)	1,987
4.	.Kayla Morrison (2016)	1,985
5.	.Afton Sauer (2004)	1,981
6.	.Kayla Morrison (2015)	1,977
7.	.Morgan Williams (2015)	1,963
8.	.Geneva Magness (2009)	1,958
9.	.Lauren Jackson (2009)	1,916
10.	.Afton Sauer (2007)	1,911

* - Individual minutes kept since 2004

MINUTES PLAYED (KEEPERS)

No.	Player	Minutes
1.	.Meghan Miller (2003)	2,281
2.	.Maddie Dobyys (2015)	2,074
3.	.Meghan Miller (2004)	2,060
4.	.Sarah Peters (2018)	1,989
5.	.Colleen Quinn (2007)	1,952

SAVES

No.	Player	Saves
1.	.Jen Fecke (1996)	150
2.	.Jen Fecke (1997)	147
3.	.Betsy Pollard (1999)	125
4.	.Kat Liebetrau (2010)	113
5.	.Meghan Miller (2003)	111

GOALS AGAINST AVG. (MINIMUM 1,000 MIN.)

No.	Player	GAA
1.	.Meghan Miller (2004) (13 GA, 2,061 min.)	0.57
2.	.Kaitlyn Stroud (2014) (14 GA, 1,722 min.)	0.73
3.	.Meghan Miller (2003) (19 GA, 2,281 min.)	0.75
4.	.Maddie Dobyys (2016) (14 GA, 1,554 min.)	0.81
5.	.Sarah Peters (2019) (12 GA, 1,124 min.)	0.96
6.	.Julie Hanley (2006) (19 GA, 1,738 min.)	0.98

SAVE PERCENTAGE (MINIMUM 1,000 MIN.)

No.	Player	Save Pct.
1.	.Meghan Miller (2004) (13 GA, 96 saves)	.881
2.	.Meghan Miller (2003) (19 GA, 111 saves)	.854
3.	.Kaitlyn Stroud (2014) (14 GA, 77 saves)	.846
4.	.Betsy Pollard (1999) (29 GA, 125 saves)	.812
5.	.Kaitlyn Stroud (2013) (25 GA, 107 saves)	.811

SHUTOUTS

No.	Player	Shutouts
1.	.Meghan Miller (2004)	11
2.	.Meghan Miller (2003)	10
3.	.Sarah Peters (2018)	9
4.	.Kaitlyn Stroud (2014)	8
5.	.Julie Hanley (2006)	7
6.	.Maddie Dobyys (2015)	6

WINS

No.	Player	Wins
1.	.Meghan Miller (2004)	18
	.Meghan Miller (2003)	18
3.	.Kaitlyn Stroud (2014)	14
4.	.Julie Hanley (2008)	13
	.Meghan Miller (2001)	13
6.	.Sarah Peters (2018)	12
7.	.Julie Hanley (2006)	11

CAREER RECORDS**POINTS**

No.	Player	Pts.
1.	Caroline Smith (2002-05) (51 goals, 24 assists)	126
2.	Whitney Berry (2009-12) (23 goals, 32 assists)	78
3.	Monica Dolinsky (2006-09) (23 goals, 30 assists)	76
4.	Katie McClure (2016-Present) (31 goals, 13 assists)	75
5.	Liana Salazar (2011-15) (28 goals, 12 assists)	68
	Rachel Gilfillan (2001-04) (26 goals, 16 assists)	68
7.	Grace Hagan (2015-18) (25 goals, 17 assists)	67
8.	Caroline Kastor (2010-13) (26 goals, 14 assists)	66
9.	Ashley Williams (2012-15) (21 goals, 10 assists)	52
	Emily Cressy (2008-10) (23 goals, 6 assists)	52

GOALS

No.	Player	Goals
1.	Caroline Smith (2002-05)	51
2.	Katie McClure (2016-Present)	31
3.	Liana Salazar (2011-15)	28
4.	Caroline Kastor (2010-13)	26
	Rachel Gilfillan (2001-04)	26
6.	Grace Hagan (2015-18)	25
7.	Whitney Berry (2009-12)	23
	Emily Cressy (2008-10)	23
	Monica Dolinsky (2006-09)	23
10.	Ashley Williams (2012-15)	21

GAME-WINNING GOALS

No.	Player	GWG
1.	Katie McClure (2016-Present)	16
2.	Caroline Smith (2002-05)	14
3.	Emily Cressy (2008-10)	11
4.	Ashley Williams (2012-15)	10
	Rachel Gilfillan (2001-04)	10
6.	Monica Brothers (2001-04)	8
7.	Liana Salazar (2011-15)	7
	Caroline Kastor (2010-13)	7
	Monica Dolinsky (2006-09)	7
	Jessica Bush (2005-08)	7
11.	Jamie Fletcher (2011-14)	6
	Shannon McCabe (2006-09)	6

ASSISTS

No.	Player	Assists
1.	Whitney Berry (2009-12)	32
2.	Monica Dolinsky (2006-09)	30
3.	Caroline Smith (2002-05)	24
4.	Jessica Bush (2005-08)	21
5.	Holly Gault (2003-06)	19
	Hilla Rantala (1999-2001)	19
7.	Grace Hagan (2015-18)	17
	Amy Geha (2001-04)	17
	Melanie Schroeder (1998-2001)	17
10.	Rachel Gilfillan (2001-04)	16

SHOTS

No.	Player	Shots
1.	Caroline Smith (2002-05)	333
2.	Whitney Berry (2009-12)	267
3.	Monica Dolinsky (2006-09)	226
4.	Katie McClure (2016-Present)	207
5.	Jamie Fletcher (2011-14)	206
6.	Liana Salazar (2011-15)	194
7.	Grace Hagan (2015-Present)	179
8.	Rachel Gilfillan (2001-04)	175
9.	Caroline Kastor (2010-13)	159
10.	Ashley Williams (2012-15)	154

SHOTS ON GOAL

No.	Player	SOG
1.	Caroline Smith (2002-05)	166
2.	Whitney Berry (2009-12)	113
3.	Monica Dolinsky (2006-09)	96
4.	Katie McClure (2016-Present)	94
5.	Rachel Gilfillan (2001-04)	92
6.	Liana Salazar (2011-15)	86
7.	Grace Hagan (2015-18)	82
8.	Jamie Fletcher (2011-14)	79
9.	Emily Cressy (2008-10)	78
10.	Caroline Kastor (2010-13)	77

GAMES PLAYED (FIELD)

No.	Player	Games
1.	Amy Geha (2001-04)	88
2.	Rachel Gilfillan (2001-04)	87
	Lauren Williams (2001-04)	87
4.	Estelle Johnson (2006-09)	85
	Holly Gault (2003-06)	85
	Monica Brothers (2001-04)	85
7.	Lacey Novak (2003-06)	84
	Stacy Leeper (2001-04)	84
9.	Grace Hagan (2015-18)	83
	Kayla Morrison (2014-17)	83
	Liana Salazar (2011-15)	83
	Kim Boyer (2006-09)	83
	Monica Dolinsky (2006-09)	83
	Jessica Bush (2005-08)	83
	Afton Sauer (2004-07)	83
	Jessica Smith (2002-05)	83

GAMES STARTED (FIELD)

No.	Player	Games
1.	Kayla Morrison (2014-17)	83
	Estelle Johnson (2006-09)	83
	Afton Sauer (2004-07)	83
4.	Liana Salazar (2011-15)	82
	Whitney Berry (2009-12)	82
	Shelby Williamson (2009-12)	82
	Jessica Bush (2005-08)	82
	Holly Gault (2003-06)	82
9.	Grace Hagan (2015-18)	80
	Taylor Estrada (2013-16)	80
11.	Caroline Smith (2002-05)	79
12.	Jamie Fletcher (2011-14)	76

MINUTES PLAYED (FIELD)*

No.	Player	Minutes
1.	Estelle Johnson (2006-09)	7,470
2.	Afton Sauer (2004-07)	7,459
3.	Kayla Morrison (2014-17)	7,368
4.	Shelby Williamson (2009-12)	7,232
5.	Liana Salazar (2011-15)	6,933
6.	Whitney Berry (2009-12)	6,739
7.	Taylor Estrada (2013-16)	6,578
8.	Grace Hagan (2015-18)	6,454
9.	Missy Geha (2005-08)	6,416
10.	Jamie Fletcher (2011-14)	6,337

* Minutes played became an official stat in 2004

GAMES PLAYED (KEEPERS)

No.	Player	Games
1.	Meghan Miller (2001-04)	88
2.	Julie Hanley (2005-09)	65
3.	Kaitlyn Stroud (2010-14)	63
4.	Maddie Dobyns (2014-Present)	60
5.	Kat Liebetrau (2009-12)	54

SAVES

No.	Player	Saves
1.	Jen Fecke (1996-98)	375
2.	Meghan Miller (2001-04)	362
3.	Kaitlyn Stroud (2010-2014)	281
4.	Kat Liebetrau (2009-12)	228
	Julie Hanley (2005-09)	228

GOALS AGAINST AVG. (MIN. 2,500 MIN.)

No.	Player	GAA
1.	Meghan Miller (2001-04) (85 GA, 7,836 min.)	0.98
2.	Sarah Peters (2018-Present) (35 GA, 3,113 min.)	1.01
3.	Maddie Dobyns (2014-17) (64 GA, 5,427 min.)	1.06
4.	Kaitlyn Stroud (2010-14) (75 GA, 5,582 min.)	1.21
5.	Julie Hanley (2005-09) (81 GA, 5,515 min.)	1.32

SAVE PERCENTAGE (MIN. 100 SHOTS FACED)

No.	Player	Save Pct.
1.	Betsy Pollard (1996-99) (29 GA, 127 saves)	.814
2.	Meghan Miller (2001-04) (85 GA, 362 saves)	.810
3.	Kaitlyn Stroud (2010-14) (75 GA, 281 saves)	.789
4.	Colleen Quinn (2004-07) (44 GA, 157 saves)	.781
5.	Jen Fecke (1996-98) (110 GA, 375 saves)	.773

SHUTOUTS

No.	Player	Shutouts
1.	Meghan Miller (2001-04)	28
2.	Julie Hanley (2005-09)	16
3.	Maddie Dobyns (2014-17)	14
4.	Sarah Peters (2018-Present)	13
	Kaitlyn Stroud (2010-14)	13
6.	Kat Liebetrau (2009-12)	12

WINS

No.	Player	Wins
1.	Meghan Miller (2001-04)	60
2.	Julie Hanley (2005-09)	36
3.	Kaitlyn Stroud (2010-14)	32
4.	Maddie Dobyns (2014-17)	29
5.	Kat Liebetrau (2009-12)	23

TV/RADIO ROSTER

**0** **GABBIE DAWE**
Fr. / GK / 5-10
Memphis, Tenn.**00** **SARAH PETERS**
So. / GK / 5-10
Lee's Summit, Mo.**1** **MELANIA PASAR**
Fr. / GK / 5-11
Potoroz, Slovenia**2** **ELLIE PRYBYLSKI**
Fr. / D / F / 5-5
Forsyth County, Ga.**3** **MYA SHERIDAN**
Fr. / F / 5-5
Schertz, Texas**4** **KAILEY LANE**
So. / F / 5-9
Omaha, Neb.**6** **KAELA HANSEN**
So. / D / 5-7
Burnaby, British Columbia**7** **AVERY HALL**
Jr. / M / 5-5
McKinney, Texas**8** **EBBA COSTOW**
Fr. / M / 5-5
Uppsala, Sweden**9** **MADISON MEADOR**
Sr. / D / 5-7
Ballwin, Mo.**10** **GRACELY BRILEY**
Fr. / M / 5-9
Olathe, Kan.**11** **CHAIS WRIGHT**
RS-Fr. / D / 5-4
Kansas City, Mo.**12** **KATIE McCLURE**
Fr. / F / 5-4
Wichita, Kan.**13** **KATHRYN CASTRO**
Jr. / M / 5-3
Plano, Texas**14** **SAMANTHA BARNETT**
So. / M / 5-8
Edmond, Okla.**15** **CERI HOLLAND**
Jr. / M / 5-6
West Yorkshire, England**16** **ITALIA BRADLEY**
So. / D / 5-7
Coppell, Texas**17** **LIA BEYER**
Fr. / D / 5-7
Parker, Colo.**18** **EMILIE GAVILLET**
RS-Fr. / GK / 5-9
Montreux, Switzerland**19** **EVA ELÍASDÓTTIR**
Sr. / F / 5-6
Thorlakhshofn, Iceland**20** **MARGHERITA GIUBILATO**
Fr. / F / M / 5-4
Martellago, Italy**21** **ISABELLA CAVALCANTE**
Jr. / D / 5-7
Glen Ellyn, Ill.**22** **MANDI DUGGAN**
Jr. / F / 5-2
Aurora, Colo.**23** **GRACE WILTGEN**
Fr. / D / 5-6
Denton, Texas**24** **ELISE REINA**
Fr. / D / 5-2
Fayetteville, Ark.**26** **ADDISYN MERRICK**
Sr. / D / 5-5
Lee's Summit, Mo.**27** **SOPHIE MAIERHOFER**
Sr. / M / 5-7**28** **BRI AMOS**
Sr. / M / 5-7
Tulsa, Okla.**MARK FRANCIS**
Head Coach
21st Season