



KANSAS

#KUsoccer

f /KANSASSOCCER

t /KUWSOCCER

o /KANSASSOCCER

OCT. 18, 2019 | KANSAS STATE | MATCH NOTES

KANSAS COMMUNICATIONS

JAYHAWKS

10-4-1 OVERALL

United Soccer rank: **23**

Head Coach: Mark Francis

2-2-1

TopDrawer rank: --

Record: 229-167-35 (21st year)



-vs-



3-9-2 OVERALL

United Soccer rank: --

Head Coach: Mike Dibbini

1-4-0

TopDrawer rank: --

Record: 17-41-8 (4th year)

WILDCATS

2019 SCHEDULE

Date	KU Rnk	OPP Rnk	Opponent	TV	Time/Result
AUGUST (3-0-0)					
22	rv/-	-/-	NEBRASKA	ESPN+	W, 4-0
25	rv/-	-/-	LOYOLA-CHICAGO	ESPN+	W, 6-0
29	18/-	20/18	MEMPHIS	ESPN+	W, 2-1
SEPTEMBER (6-3-0)					
1	18/-	-/-	FLORIDA ATLANTIC	ESPN+	W, 1-0
6	11/-	-/-	vs. DePaul*		L, 0-1
8	11/-	rv/-	at Purdue*	BTN+	W, 2-1
13	18/-	-/-	at Northwestern	BTN+	W, 1-0
15	18/-	-/-	at Western Michigan		W, 2-0
19	14/rv	7/7	BYU	ESPN+	L, 0-2
22	14/rv	-/-	KENNESAW STATE	ESPN+	W, 3-1
26	17/rv	-/-	TEXAS*	FSI	L, 0-1
29	17/rv	-/-	BAYLOR*	ESPN+	W, 4-1
OCTOBER (1-1-1)					
3	21/rv	25/-	at Oklahoma State*	ESPN+	L, 2-5
10	rv/-	-/-	at Oklahoma*	FS Oklahoma	W, 1-0 (OT)
13	rv/-	14/25	at Texas Tech*	FS Southwest	T, 0-0 (2OT)
18	23/-	-/-	KANSAS STATE*	ESPN+	7 p.m.
24	-/-	-/-	WEST VIRGINIA*	ESPN+	7 p.m.
27	-/-	-/-	at TCU*	FS Southwest	1 p.m.
31	-/-	-/-	at Iowa State*		7 p.m.
NOVEMBER					
3-10	Big 12 Championship<		TBD		TBD

All times Central and subject to change; Home games **BOLD** and played at Rock Chalk Park; Rank: United Soccer Coaches Top 25 / TopDrawer Soccer Top 25; * Boilermaker Challenge Cup (West Lafayette, Ind.); * Big 12 Conference Game; < Big 12 Championship (Kansas City, Mo.)

BY THE NUMBERS

8 The Jayhawks currently boast the eighth-toughest schedule in the NCAA. Of the teams with the 10 hardest schedules, KU is one of only three to have already collected 10 wins.

13 Thirteen of KU's 28 goals this season have come in either the first 15 minutes or the final 15 minutes of regulation and overtime. Last season, the Jayhawks didn't score any goals in the first 15 minutes but netted nine of their 28 goals after the 74th minute.

22 Kansas has amassed a +22 goal differential in home games since the start of the 2018 season. In that span, KU is 14-4-0 and has been shut out only twice in those 18 matches.



GAME

16

KANSAS STATE at #23 KANSAS

Dillons Sunflower Showdown

Lawrence, Kan. • Rock Chalk Park (2,500)

Friday, October 5, 2019 • 7 p.m. CT



BIG 12 NOW ON ESPN+

Play-by-Play: Dave Stewart
Webcast: Huw Williams
Producer: Curtis Lorenz



JAYHAWK RADIO NETWORK

Radio: IMG Jayhawk Radio Network
Webcast: KUAthletics.leanplay.com
Play-by-Play: Jack Nadeau

QUICK KICKS

- The Jayhawks welcome the Kansas State Wildcats for the third soccer edition of the Dillons Sunflower Showdown. The in-state rivals have split the first two years of the series, each claiming wins on the other's home pitch.
- Kansas is coming off a 0-0 draw with No. 14 Texas in Lubbock on Oct. 13. It capped an unbeaten weekend on the road for the Jayhawks, who also tallied a 1-0 overtime win at Oklahoma on Oct. 10.
- Kansas was slotted at No. 14 in the season's fourth Rating Percentage Index (RPI) released by the NCAA this week. It marked the first time since 2014 that the Jayhawks were slotted in the top-20 of the RPI in four-straight weeks.
- KU's 28 goals scored this season rank 45th in the NCAA and third in the conference. The figure has already surpassed the goals scored by the 2015, 2016 and 2017 squads and matches the total from the entire 2018 campaign.
- Kansas is currently navigating through the eighth-toughest schedule in the NCAA. The Jayhawks have played or will play 11 teams that are ranked 80th or better in this week's RPI.
- Sophomore goalkeeper Sarah Peters was named the Big 12 Co-Defensive Player of the Week Tuesday falling her two shutouts and 10 saves against Oklahoma last week. She is the third Jayhawk to claim league weekly award this season.
- Following KU's overtime win at Oklahoma Thursday and its draw at Texas Tech Sunday, the Jayhawks are 10-3-12 in their last 25 matches that have gone to extra time. This stretch dates back to the 2015 season.
- Junior Mandi Duggan has scored four goals in her last three outings. This after the Aurora, Colorado product netted three goals in her previous 37 matches as a Jayhawk.
- Since 2014, the Jayhawks are 49-2-1 in matches in which they score two or more goals. This includes a 15-1-0 mark since the start of the 2018 season, with the lone blemish coming in the 5-2 loss to OSU two weeks ago in Stillwater.
- Ten different Jayhawks have scored a goal this season. McClure leads the team with nine goals, which ranks her 31st in the NCAA.

SERIES AT A GLANCE

OVERALL

in Lawrence

Last Meeting

TIED, 1-1-0

KSU leads, 1-0-0

W, 2-0, @ KSU (10.14.18)



10-4-1

<< **W-L-D**

3-9-2

23

<< **UNITED SOCCER RANK**

-

1.87

<< **GOALS PER GAME**

1.00

14.1

SHOTS PER GAME >>

15.4

.132

<< **SHOT PERCENTAGE**

.065

.415

<< **SHOT ON GOAL PERCENTAGE**

.394

0.87

<< **GOALS ALLOWED PER GAME**

1.64

2.9

SAVES PER GAME >>

5.6

.768

SAVE PERCENTAGE >>

.775

2-2

<< **PENALTIES** >>

2-2

9.6

FOULS PER GAME >>

9.8

8-0

<< **YELLOW - RED CARDS**

7-0

LAST MATCH STARTERS



NUMERICAL ROSTER

NO.	NAME	POS.	HT.	YR.	HOMETOWN (PREVIOUS SCHOOL)
0	Gabbie Dawe	.GK	5-10	Fr.	Memphis, Tenn. (Houston HS)
00	Sarah Peters	.GK	5-10	So.	Lee's Summit, Mo. (Lee's Summit North HS)
1	Melania Pasar	.GK	5-11	Fr.	Portoroz, Slovenia (Ginnasio Antonio Sema Pirano)
2	Ellie Prybylski	.D/F	5-5	Fr.	Forsyth County, Ga. (Lambert HS)
3	Mya Sheridan	.F	5-5	Fr.	Schertz, Texas (Samuel Clemens HS)
4	Kailey Lane	.F	5-9	So.	Omaha, Neb. (Millard North HS)
6	Kaela Hansen	.D	5-7	So.	Burnaby, B.C. (Burnaby Central Secondary)
7	Avery Hall	.M	5-5	Jr.	McKinney, Texas (McKinney Boyd HS)
8	Ebba Costow	.M	5-5	Fr.	Uppsala, Sweden (Celsiusskolan)
9	Madison Meador	.D	5-7	Sr.	Ballwin, Mo. (Marquette HS/Ole Miss)
10	Gracely Briley	.M	5-9	Fr.	Olathe, Kan. (Blue Valley Southwest HS)
11	Chais Wright	.D	5-4	RS-Fr.	Kansas City, Mo. (Park Hill HS)
12	Katie McClure	.F	5-4	Sr.	Wichita, Kan. (Maize HS)
13	Kathryn Castro	.M	5-3	Sr.	Plano, Texas (Plano West Senior High)
14	Samantha Barnett	.M	5-8	So.	Edmond, Okla. (Edmond Memorial HS)
15	Ceri Holland	.M	5-5	Jr.	West Yorkshire, England (South Craven School)
16	Italia Bradley	.D	5-7	So.	Coppell, Texas (Coppell HS)
17	Lia Beyer	.D	5-7	Fr.	Parker, Colo. (Legend HS)
18	Emilie Gavillet	.GK	5-9	RS-Fr.	Montreux, Switzerland (Wilhelm Hausenstein Gymnasium)
19	Eva Eliasdóttir	.F	5-9	Sr.	Thorlakhofn, Iceland (Fjölbrotaskóli Suðurlands)
20	Margherita Giubilato	.F	5-4	Fr.	Martellago, Italy (Accademia Dante Alighieri)
21	Isabella Cavalcante	.D	5-7	Jr.	Glen Ellyn, Ill. (Glenbard West HS)
22	Mandi Duggan	.F	5-2	Jr.	Aurora, Colo. (Grandview HS)
23	Grace Wiltgen	.D	5-6	So.	Denton, Texas (Denton HS)
24	Elise Reina	.D	5-2	Sr.	Fayetteville, Ark. (Har-Ber HS)
26	Addisyn Merrick	.D	5-6	Sr.	Lee's Summit, Mo. (Lee's Summit North HS)
27	Sophie Maierhofer	.M	5-7	Sr.	Graz, Austria (University of Bremen)
28	Bri Amos	.F	5-7	So.	Tulsa, Okla. (Union HS)

STAFF

NAME	POSITION // YEAR AT KU	ALMA MATER // YEAR
Mark Francis	Head Coach // 21st	SMU // 1987
Kelly Miller	Assoc. Head Coach // 21st	Copper Union // 1996
Laura Jackson	Assistant Coach // 1st	Iona // 2012
Derek Shoare	Volunteer Asst. Coach // 5th	St. Mary's (London) // 1980
Shelby Larson	Dir. of Operations // 1st	Tampa // 2014

PRONUNCIATION GUIDE

Isabella CAVALCANTE	kav-uhl-KAHN-tay
Ebba COSTOW	COST-ov
Mandi DUGGAN	DEW-guhn
Eva ELIASDÓTTIR	ell-EYE-iss-daw-ter
Emilie GAVILLET	GAH-vee-ay
MARGHERITA GIUBILATO	marg-uh-REET-uh joo-bee-LAH-toe
CERI Holland	CARE-ee
Madison MEADOR	MEH-der
Sophie MAIERHOFER	MY-er-ha-fur
Ellie PRYBYLSKI	.prib-ILL-skee
Grace WILTGEN	WILL-chen
CHAIIS Wright	CHASE

RADIO/TV ROSTER



0 **GABBIE DAWE**
Fr. // GK // 5-10
Memphis, Tenn.



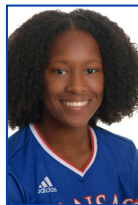
00 **SARAH PETERS**
So. // GK // 5-10
Lee's Summit, Mo.



1 **MILANIA PASAR**
Fr. // GK // 5-11
Portoroz, Slovenia



2 **ELLIE PRYBYLSKI**
Fr. // D/F // 5-5
Forsyth County, Ga.



3 **MYA SHERIDAN**
Fr. // F // 5-5
Schertz, Texas



4 **KAILEY LANE**
So. // F // 5-9
Omaha, Neb.



6 **KAELA HANSEN**
So. // D // 5-7
Burnaby, B.C.



7 **AVERY HALL**
So. // M // 5-5
McKinney, Texas



8 **EBBA COSTOW**
Fr. // M // 5-5
Uppsala, Sweden



9 **MADISON MEADOR**
Sr. // D // 5-7
Ballwin, Mo.



10 **GRACELEY BRILEY**
Fr. // M // 5-9
Olathe, Kan.



11 **CHAIIS WRIGHT**
R-Fr. // D // 5-4
Kansas City, Mo.



12 **KATIE MCCLURE**
Sr. // F // 5-4
Wichita, Kan.



13 **KATHRYN CASTRO**
Jr. // M // 5-3
Plano, Texas



14 **SAMANTHA BARNETT**
So. // M // 5-8
Edmond, Okla.



15 **CERI HOLLAND**
Jr. // M // 5-5
West Yorkshire, England



16 **ITALIA BRADLEY**
So. // D // 5-7
Coppell, Texas



17 **LIA BEYER**
Fr. // D // 5-7
Parker, Colo.



18 **EBILIE GAVILLET**
R-Fr. // GK // 5-9
Montreux, Switzerland



19 **EVA ELIASDÓTTIR**
Sr. // D // 5-9
Thorlakhofn, Iceland



20 **MARGHERITA GIUBILATO**
Fr. // F // 5-4
Martellago, Italy



21 **ISABELLA CAVALCANTE**
Jr. // F // 5-7
Glen Ellyn, Ill.



22 **MANDI DUGGAN**
Jr. // F // 5-2
Aurora, Colo.



23 **GRACE WILTGEN**
So. // D // 5-6
Denton, Texas



24 **ELISE REINA**
Sr. // D // 5-2
Fayetteville, Ark.



26 **ADDISYN MERRICK**
Sr. // D // 5-6
Lee's Summit, Mo.



27 **SOPHIE MAIERHOFER**
Sr. // M // 5-7
Graz, Austria



28 **BRI AMOS**
So. // F // 5-7
Tulsa, Okla.



HC **MARK FRANCIS**
Head Coach
21st season

SERIES VS. KANSAS STATE

The contest Friday will mark the third between Kansas and Kansas State with both teams having a victory in hand in the young series. The Wildcats claimed a 1-0 win in Lawrence in 2017 before the Jayhawks took a 2-0 victory in Manhattan last season.

SCOUTING THE WILDCATS

Kansas State enters Friday's match coming off a 2-1 win over Iowa State last Thursday in Ames. The was the Wildcats' first in Big 12 play this season. Each of K-State's four league losses have come by one goal.

Offensively, K-State is led by Laramie Hall and Katie Cramer who have each netted four goals apiece. Brookelynn Entz, the Big 12's reigning offensive player of the week, is tops on her squad with four assists. She is also one of eight Wildcats to have tallied double digit shots so far this year.

On defense, Kansas State has conceded 23 goals and picked up four shutouts through its first 14 outings of 2019. Rachel Harris has started in goal for the Wildcats in nine of its 14 matches this season. She boasts a goals-against average of 1.63 and has collected 50 saves.

Kansas State is led by Mike Dibbini, who is in his fourth season at the helm in Manhattan. Stone has a record of 17-41-8 as the K-State head coach.

SUNFLOWER SHOWDOWN REVIEW

This weekend the Jayhawks will take part in the third soccer edition in the storied history of the Sunflower Showdown in-state rivalry between Kansas and Kansas State. The rivalry began in 1902 with the first meeting between the KU and KSU football teams, a 16-0 Jayhawk victory.

In the 117 years since, the Jayhawks and Wildcats have done battle in hundreds of match-ups across several fields of competition. In head-to-head competitions for the sports that both schools still currently sponsor (baseball, men's basketball, women's basketball, football, women's tennis, women's rowing and women's volleyball), Kansas leads that all-time Sunflower Showdown series at 605-477-6.

NO GAMES OFF

Before Kansas soccer even hit the pitch for its first match of the season, the Jayhawks knew they would be in for a gauntlet of a schedule in 2019.

The 2019 Jayhawks' slate, which currently sits as the eighth-toughest in all of NCAA DI, features nine teams that competed in the NCAA Tournament a year ago as well as three reigning conference champions. The Jayhawks, sitting at 10-4-1 after their first 15 games of the season, have played or will play five teams that are ranked or receiving votes in the most recent United Soccer Coaches' top-25 poll. That number includes two squads inside the top-10.

The Jayhawks have already played four top-25 teams over the first two months of the season - No. 20 Memphis (W, 2-1), No. 7 BYU (L, 0-2), No. 25 Oklahoma State (L, 2-5) and No. 14 Texas Tech (T, 0-0).

It appears as though KU could face several more battles with top-25 teams this season with the second half of Big 12 Conference play and the league tournament still to come. The conference currently features four teams that are ranked or receiving votes in the Coaches' poll and that includes No. 13 Texas Tech, No. 15 Oklahoma State and the 23rd-ranked Jayhawks.

PETERS NAMED BIG 12 CO-DEFENSIVE PLAYER OF THE WEEK

Kansas goalkeeper Sarah Peters was named the Big 12's Co-Defensive Player of the Week by the league office Tuesday. The sophomore, who tallied a pair of shutouts between the posts last week, earned her second conference weekly award and became the third Jayhawk to claim the honor this season after Katie McClure was named the Offensive Player of the Week on Aug. 27 and Addisyn Merrick earned Defensive Player of the Week honors on Sept. 17.

Peters, who hails from Lee's Summit, Missouri, recorded two shutouts as the Jayhawks defeated Oklahoma 1-0 in overtime and tied Texas Tech 0-0, both on the road. The sophomore goalkeeper led the league with 10 saves in week eight and kept KU's opponents scoreless in over 208 minutes of play. Peters' six shutouts on the year are tied for the league lead and her 0.81 goals-against average is second among keepers who have played 800 or more minutes.

SPREADING THE WEALTH

The KU offense has shown to be a tough assignment for opposing defenses this year after a host of Jayhawks have made their presence known on the stat sheet. Thirteen different Jayhawks have had their hand in at least one of the team's goals thus far in 2019, either scoring or assisting. A total of eight players have managed to tally double-digit shots.

This is a trend that has been carried over from last year's squad which was also an unselfish bunch, as 11 different Jayhawks tallied at least one goal or assist in 2018.

LAST TIME OUT

More than 100 minutes was not enough to separate the Kansas Jayhawks and No. 14 Texas Tech Red Raiders as the two squads played to a 0-0 draw. Junior midfielder Ceri Holland led the squad with six shots, while sophomore goalkeeper Sarah Peters tallied four saves, one coming on a TTU penalty kick, en route to her sixth shutout of the year.

The two sides managed three shots apiece in the two 10-minute overtime periods but no golden goals were in the cards as KU and TTU settled for a scoreless draw. The Red Raiders ended the match outshooting the Jayhawks 14-11, however Kansas was able to put seven of its shots on target, compared to just four for the home team.

QUICK FACTS**GENERAL INFORMATION**

Location	Lawrence, Kan.
Enrollment	28,401
Founded	1866
Nickname	Jayhawks
School Colors	Crimson and Blue (PMS: Blue 293; Crimson 186)
Conference	Big 12
Chancellor	Douglas A. Girod
Athletics Director	Jeff Long
Associate Athletics Director/Soccer Administrator	Jane Fulton
Athletics Website	www.kuathletics.com
Ticket Office Phone	1.800.34.HAWKS (42957)

SOCCER FACILITY

Home Facility (Capacity)	Rock Chalk Park (2,500)
KU Record at Rock Chalk Park	32-17-2 (.647)
Opened	2014
Surface	Natural Grass (Bermuda and Rye)

COACHING STAFF/SUPPORT STAFF

Head Coach	Mark Francis (SMU, 1987)
Record at Kansas	229-167-35 (21st season)
Overall	262-192-36 (24th season)
Associate Head Coach	Kelly Miller (The Cooper Union, 1996)
Year at Kansas	21st
Assistant Coach	Laura Jackson (Iona, 2012)
Year at Kansas	First
Volunteer Assistant	Derek Shoare
Year at Kansas	Fifth

2018 IN REVIEW

Overall Record	12-6-3 (.643)
Big 12 Record	5-4-0 (.556)
Big 12 Finish	6th
Home	9-2-0 (.810)
Away	2-4-1 (.357)
Neutral	1-0-2 (.500)

PROGRAM HISTORY

First Year of Soccer at Kansas	1995 (25th season)
All-Time Record	253-215-38 (.538)
All-Time Big 12 Record	94-109-18 (.466)
Conference Titles	1 (2004)
NCAA Postseason Appearances	8
(2001, 2003, 2004, 2008, 2011, 2014, 2016, 2018)	
NCAA Postseason Record	6-8-0 (.429)

2019 TEAM INFORMATION

Letterwinners Returning/Lost	18/9
Starters Returning/Lost	9/3
Newcomers	8

BIG 12 STANDINGS**BIG 12****OVERALL**

	Record	%	Home	Away	Stk	Pts	Record	%	Home	Away	Neut	Stk
Texas Tech	3-0-2	0.800	1-0-2	2-0	T1	11	11-1-2	0.857	5-0-2	4-1-0	2-0-0	T1
Oklahoma State	3-1-1	0.700	2-0	1-1-1	W3	10	10-1-3	0.821	7-0-1	3-1-2	0-0-0	W3
Texas	3-2	0.600	1-2	2-0	L2	9	8-6	0.571	5-4	3-2	0-0	L2
TCU	2-1-1	0.625	1-0-1	1-1	W1	7	8-4-1	0.654	4-1-1	4-3-0	0-0-0	W1
KANSAS	2-2-1	0.500	1-1	1-1-1	T1	7	10-4-1	0.700	6-2-0	4-1-1	0-1-0	T1
Oklahoma	2-2-1	0.500	2-1	0-1-1	W1	7	7-5-3	0.567	4-2-1	3-3-2	0-0-0	W1
Baylor	2-2	0.500	1-0	1-2	L1	6	6-4-3	0.577	3-1-1	3-3-2	0-0-0	L1
West Virginia	2-2	0.500	1-1	1-1	L1	6	7-5-1	0.577	6-1-1	1-3-0	0-1-0	L1
Kansas State	1-4	0.200	1-2	0-2	W1	3	3-9-2	0.286	3-5-0	0-4-2	0-0-0	W1
Iowa State	0-4	0.000	0-2	0-2	L4	0	3-10	0.231	1-3	2-7	0-0	L5

THIS WEEK IN THE BIG 12

All times central

Friday, October 18

Texas at Baylor [Big 12 Now on ESPN+], 7 p.m.
 Kansas State at Kansas [Big 12 Now on ESPN+], 7 p.m.
 TCU at Texas Tech [TexasTech.TV], 7 p.m.

Sunday, October 20

Oklahoma State at Iowa State [Cyclones.tv], 12 p.m.
 Oklahoma at West Virginia [ESPNU], 2 p.m.

UNITED SOCCER COACHES POLL
OCT. 15, 2019

Rank	Team	Previous	Record
1.	Virginia (19)	833	.11-0-3
2.	Stanford (14)	825	.12-1-0
3.	North Carolina (1)	778	.12-1-1
4.	Southern California	743	.11-1-1
5.	BYU	705	.12-0-1
6.	Florida State	671	.11-3-0
7.	South Carolina	600	.11-1-1
8.	Arkansas	586	.11-2-1
9.	Duke	572	.7-1-5
10.	Wisconsin	531	.10-2-1
11.	Georgetown	513	.10-2-2
12.	Memphis	488	.13-1-1
13.	Texas Tech	450	.11-1-2
14.	Louisville	404	.11-1-1
15.	Oklahoma State	350	.10-1-3
16.	UCLA	302	.9-3-1
17.	Clemson	291	.8-4-1
18.	Texas A&M	279	.10-2-3
19.	Michigan	193	.11-3-1
20.	Santa Clara	175	.8-5-1
21.	Central Florida	146	.8-2-2
22.	Rutgers	133	.10-2-2
23.	KANSAS	102	.10-4-1
24.	Florida	93	.9-5-0
25.	Washington	77	.8-3-2

Others receiving votes: Virginia Tech (60), Washington State (60), Saint Louis (20), Arizona (20), Iowa (14), South Florida (12), Vanderbilt (9), North Carolina State (7), TCU (4), Penn State (2), Gonzaga (1), Alabama (1)

Kansas 2019 opponents are in italics

TOP DRAWER SOCCER POLL
OCT. 14, 2019

Rank	Team	Record	Conf.
1.	Virginia	.11-0-3	.3-0-3
2.	North Carolina	.12-1-1	.7-0-1
3.	Stanford	.12-1-0	.5-0-0
4.	USC	.11-1-1	.4-1-0
5.	BYU	.12-0-1	.2-0-1
6.	Florida State	.11-3-0	.5-1-0
7.	South Carolina	.11-1-1	.5-0-1
8.	Louisville	.11-1-1	.4-1-1
9.	Memphis	.13-1-1	.5-0-1
10.	Duke	.7-1-5	.2-1-4
11.	Georgetown	.10-2-2	.4-0-1
12.	Washington State	.9-3-1	.2-2-1
13.	Brown	.9-1-1	.3-0-0
14.	Wisconsin	.10-2-1	.6-0-0
15.	UCLA	.9-3-1	.3-2-0
16.	Texas A&M	.10-2-3	.4-1-1
17.	Arkansas	.11-2-1	.5-1-0
18.	Clemson	.8-4-1	.2-4-0
19.	Virginia Tech	.9-3-2	.1-3-2
20.	Rutgers	.10-2-2	.4-2-1
21.	South Florida	.8-3-0	.3-1-0
22.	Oklahoma State	.10-1-3	.3-1-2
23.	Vanderbilt	.10-3-1	.3-2-1
24.	Texas Tech	.11-1-2	.3-0-2
25.	California	.9-3-2	.1-2-2

Others receiving votes: Santa Clara (8-5-1), Oregon State (9-2-2), UCF (8-2-2), Michigan (11-3-1), Florida (9-5-0)

Kansas 2019 opponents are in italics

RPI TOP-25

Rank	Team	Record
1	Stanford	.12-1-0
2	Florida St.	.11-3-0
3	North Carolina	.12-1-1
4	Southern California	.11-1-1
5	Brown	.9-1-1
6	Arkansas	.11-2-1
7	Virginia	.11-0-3
8	Wisconsin	.10-2-1
9	Duke	.7-1-5
10	Clemson	.8-4-1
11	South Carolina	.11-1-1
12	Louisville	.11-1-1
13	Virginia Tech	.9-3-2
14	KANSAS	.10-4-1
15	Florida	.9-5-0
16	BYU	.12-0-1
17	Texas Tech	.11-1-2
18	NC State	.6-4-4
19	UCLA	.9-3-1
20	Georgetown	.10-2-2
21	Washington State	.9-3-1
22	Washington	.8-3-2
23	Texas A&M	.10-2-3
24	Hofstra	.11-3-1
25	Oklahoma State	.10-1-3

HOME SWEET HOME

Rock Chalk Park has been a welcome site for the Jayhawks in recent years as KU is enjoying a successful four-year stint playing on its home turf. The Jayhawks are 36-16-2 (.685) in matches played at home during the regular season since the start of the 2014 campaign. From 2013-14, Kansas also enjoyed an 11-match home winning streak, the longest in program history.

Since moving into Rock Chalk Park, Kansas has built a goal differential of +39 and boasts a goals-against average of 0.92, a number that includes 19 shutouts.

IRON JAYHAWK

Senior Katie McClure has continued an impressive streak into her final year in Lawrence as she has started each of the Jayhawks' last 72 matches of the Jayhawks' matches dating back to her freshman year in 2016. McClure's mark is already among the longest in program history as it sits sixth on the all-time list among field players.

CONSECUTIVE MATCHES STARTED BY
A JAYHAWK FIELD PLAYER

Rnk	Name (Yrs.)	Games
1.	Kayla Morrison (2014-17)	83
	Estelle Johnson (2006-09)	83
	Afton Sauer (2004-07)	83
4.	Whitney Berry (2009-12)	82
	Shelby Williamson (2009-12)	82
6.	Katie McClure (2016-Present)	71

RPI REVIEW

With the release of the season's four official Ratings Percentage Index (RPI) report by the NCAA this week, several good signs stick out for the Jayhawks. Kansas checked in at No. 14 on the list that takes numerous factors into account including strength of schedule, record against top-50 teams and home versus road record. In the first report released on Sept. 24, KU was slotted at No. 8, it's highest to start the year since the weekly RPI report became public in 2011.

RPI WATCH

RECORD VS.

RPI 1-25	.0-2-1
RPI 26-50	.3-1-0
RPI 51-100	.5-1-0
RPI 101-150	.2-0-0
RPI 150+	.0-0-0

GOAL DIFFERENTIAL VS.

RPI 1-25	.-5
RPI 26-50	.+4
RPI 51-100	.+12
RPI 101-150	.+4
RPI 150+	.-

BEST RESULTS

at #17 Memphis	T, 0-0
vs #30 Florida Atlantic	W, 1-0
vs #31 Memphis	W, 2-1

WORST RESULTS

vs. #48 Texas	L, 0-1
vs. #69 DePaul	L, 0-1

UPCOMING OPPONENTS

RPI	Team	Conference
151	Kansas State	Big 12
38	West Virginia	Big 12
59	TCU	Big 12
179	Iowa State	Big 12

KANSAS
RANK
14

KANSAS
Strength of
Schedule
8

BIG 12
RPI
4

This week's report shows that the Big 12 is among the nation's toughest conferences after the conclusion of nonconference play. The league tallied the fourth-highest ranking in the week's RPI and boasts eight of its 10 teams inside the top-60. The conference's high ranking also means the Jayhawks will get plenty of chances to up their national standing as two of their final four contests will be against teams currently ranked inside the top-60 of the RPI.

LET'S GET DEFENSIVE

The Jayhawks have once again proven to be a stout defensive team, carrying over the trend from their last several seasons. Kansas currently boasts a goals-against average of 0.85 this season, which encompasses seven shutouts in those first 15 outings. The Jayhawks are allowing just over three opponent shots on goal per match.

KU has already put together several impressive shutout streaks to start this season. Kansas went 189-straight minutes without conceding a goal to start the year, and recently wrapped up a 295-minute opponent scoreless stretch. KU has tallied four opponent scoreless streaks of 300 minutes or more in the last five seasons.

BOUNCING BACK

The Jayhawks have been good bouncing back when they are coming off a loss, especially when they are playing on their home turf. KU has carried over this trend into this season, claiming wins following each of their three losses so far this season.

Since moving to Rock Chalk Park in 2014, Kansas is 9-3-2 when playing a home match following a loss. That includes a 4-0-0 since the start of the 2018 season.

The KU offense has also proven to be potent in games coming off being shutout. The Jayhawks have not been blanked in consecutive matches since 2015 and are 10-1-4 in matches coming off being shut out in that span.

WEEK-BY-WEEK IN THE POLLS

	PS	1	2	3	4	5	6	7	8	9	10	FINAL
United Soccer Coaches	RV	18	11	18	14	17	21	RV	23			
Top Drawer Soccer	--	--	--	--	RV	RV	RV	--	--			
RPI	--	--	--	--	--	8	13	18	14			

BIG 12 PLAYER OF THE WEEK AWARDS

AUG. 27

Offensive . . . **Katie McClure (KU)**
 Defensive . . . Nikki Panas (OU)
 Freshman . . . Olyvia Dowell (OSU)

SEPT. 3

Offensive . . . Kaylee Dao (OU)
 Defensive . . . Emily Alvarado (TCU)
 Freshman . . . Gracie Brian (TCU)

SEPT. 10

Offensive . . . Haley Berg (UT)
 Defensive . . . Kim Rodriguez (OSU)
 Freshman . . . Grace Collins (TCU)

SEPT. 17

Offensive . . . Kirsten Davis (TTU)
 Defensive . . . **Addysn Merrick (KU)**
 Freshman . . . Mira Emma (ISU)

SEPT. 24

Offensive . . . Grace Yochum (OSU)
 Defensive . . . Jennifer Wandt (BU)
 Freshman . . . Madison White (TTU)

OCT. 1

Offensive . . . Yazmeen Ryan (TCU)
 Defensive . . . Nicole Curry (UT)
 Freshman . . . Madison White (TTU)

OCT. 8

Offensive . . . Kaylee Dao (OU)
 Defensive . . . Madison White (TTU)
 Freshman . . . Elizabeth Kooiman (BU)

OCT. 15

Offensive . . . Brookelynn Entz (KSU)
 Defensive . . . **Sarah Peters (KU)**
 Defensive . . . Madison White (TTU)
 Freshman . . . Hannah Anderson (TTU)

OCT. 22

Offensive . . .
 Defensive . . .
 Freshman . . .

OCT. 29

Offensive . . .
 Defensive . . .
 Freshman . . .

NOV. 1

Offensive . . .
 Defensive . . .
 Freshman . . .

KATIE MCCLUTCH

Senior Katie McClure has firmly positioned herself as one of the most clutch players in program history. Already this season, the Wichita product has tallied five game-winning goals, including the winner in the final seconds against No. 20 Memphis on Aug. 26. These late-match heroics are nothing new for McClure, who has proved time and time again throughout her career that she performs best when the match is in its final stages.

Her her goal against Kennesaw State on Sept. 22 marked the 16th game-winner of her career and has her at No. 1 on the Kansas all-time list.

Of McClure's 31-career goals, 10 of them have come in the final 15 minutes of regulation or overtime, which includes four golden goals last season.

TOP-25 TAKEDOWNS

The Aug. 29 over No. 20 Memphis marked the fourth-consecutive season the Jayhawks have tallied at least one victory over a team ranked among the top-25 in the nation.

Kansas is 8-15-3 against ranked foes since 2016, with seven of those losses coming against teams inside the top-10. Prior to this recent run, the Jayhawks managed just six victories over top-25 teams from 2010-15.

McCLURE MINUTES

Senior Katie McClure is putting an emphatic stamp on an already outstanding career at KU, having already posted nine goals (five game-winners) and three assists through her first 14 outings this season. Last year saw her make headlines across the state, the region and the nation. She led the Jayhawks with 11 goals, seven game-winning goals, 28 shots on goal and 25 points, figures that ranked the Wichita product among the top-10 in the Big 12 in their respective categories.

Fourteen matches into her career finale, she has already made big jumps on some impressive lists, creeping closer to inserting her name among the top offensive players in Jayhawk history. Her 31 career goals currently rank her second on Kansas' all-time goal scorer chart. McClure's 16 game-winning goals are the most ever for a Jayhawk.

KANSAS CAREER GOAL SCORING LEADERS

Rnk	Name (Yrs.)	Goals
1.	Caroline Smith (2002-05)	51
2.	Katie McClure (2016-Present)	31
3.	Liana Salazar (2011-15)	28
4.	Caroline Kastor (2010-13)	26
	Rachel Gilfillan (2001-04)	26

LATE MATCH MAGIC

The Jayhawks have been a clutch bunch so far this season, a trend which they have carried over from a year ago. Kansas has netted eight goals in the final 15 minutes of regulation or overtime, four of which have been game-winners.

The Jayhawks were also clutch in crunch time during the 2018

campaign. Thirteen of the Jayhawks' 28 goals scored came in the 60th minute or later. That number included 10 goals Kansas tallied in the final 10 minutes of regulation or in overtime.

The Jayhawks came out on top in seven of those matches that saw Kansas score in the 80th minute or later. KU netted five golden goals in 2018, four off the boot of senior forward Katie McClure and one from senior forward Eva Eliasdottir in KU's 2-1 win over TCU (10/12). McClure scored seven game-winners last season. Those seven game-winning strikes ranked her first among Big 12 players and were tied for the most by a Jayhawk in school history.

KU PICKED SIXTH IN BIG 12 PRESEASON COACHES' POLL

Kansas soccer was predicted to finish sixth in the 2019 league standings according to the Big 12 preseason coaches' poll which was released two weeks ago. The ranking marked the seventh time in the last eight years that KU has been picked sixth or higher in the conference's preseason poll.

Just three points separated the 2018 Big 12 Championship title-winning Mountaineers from the defending regular-season champion Bears at the top of the poll with 75 and 72 points, respectively. The Longhorns were slotted third with 65 total points ahead of TCU in fourth with 57 points. Texas Tech, Kansas and Oklahoma State were next at fifth, sixth and seventh, while Oklahoma, Iowa State and Kansas State rounded out the poll in the eighth, ninth and tenth spots.

PRESEASON BIG 12 COACHES POLL

Rnk	TEAM (1ST PLACE VOTES)	POINTS
1	West Virginia	75
2	Baylor	72
3	Texas	65
4	TCU	57
5	Texas Tech	52
6	Kansas	44
7	Oklahoma State	33
8	Oklahoma	26
9	Iowa State	17
10	Kansas State	9

FIRST TO SCORE, WINS GALORE

Dating back to the beginning of the 2012 season, now at 159 games, Kansas has developed an interesting trend when it comes to which team tallies the first goal of the match. During that 159-game span, the Jayhawks were on the losing end only four times in contests which they put in the match's first goal. Kansas has amassed a record of 73-4-8 in those games (90.6 winning %), which includes eight of KU's wins this season.

UP NEXT

The Jayhawks will hit the pitch at Rock Chalk Park for the final time in the regular season when they host West Virginia on Thursday, Oct. 24 at 7 p.m. The team will honor seven Jayhawks - Mandi Duggan, Eva Eliasdottir, Sophie Maierhofer, Katie McClure, Madison Meador, Addysn Merrick, Elise Reina - who will be playing their final regular-season match in Lawrence.

NCAA / BIG 12 RANKINGS

BIG 12 Top-10 (10.13.19); NCAA Top-100 (10.13.19)



TEAM

W-L-T Percentage (.700, 10-4-1) . . .	3	59
Points Per Game (5.2)	5	87
Goals Per Game (1.9)	4	70
Assists Per Game (1.5)	5	94
Shots Per Game (14.1)	8	95
Shots on Goal Per Game (5.9)	8	-
Corners Per Game (5.7)	5	56
Offsides Per Game (1.8)	6	-
Fouls Per Game (9.6)	5	-
Goals-Against Avg. (.849)	3	60
Saves Per Game (2.8)	9	-
Save Percentage (.768)	5	-
Shutouts (7)	3	-

INDIVIDUAL (ALL GAMES)

TOTAL POINTS

Katie McClure (24)	2	21
------------------------------	---	----

TOTAL GOALS

Katie McClure (9)	3	31
-----------------------------	---	----

GAME-WINNING GOALS

Katie McClure (5)	1	3
-----------------------------	---	---

SHOTS PER GAME

Katie McClure (3.3)	6	79
-------------------------------	---	----

SHUTOUTS

Sarah Peters (6)	1	68
----------------------------	---	----

GOALS-AGAINST AVERAGE

Sarah Peters (0.81)	3	55
-------------------------------	---	----

GAMES STARTED STREAKS

Player	Current	Career Long
Katie McClure	72	72
Ceri Holland	55	55
Sarah Peters	35	35
Kaela Hansen	35	35
Isabella Cavalcante	19	21
Addysn Merrick	17	44
Sophie Maierhofer	14	14
Ellie Prybylski	8	8
Ebba Costow	3	4
Grace Wiltgen	3	3
Mandi Duggan	2	4
Elise Reina	0	24
Eva Eliasdottir	0	20
Madison Meador	0	15
Kailey Lane	0	7
Kathryn Castro	0	6
Bri Amos	0	4
Italia Bradley	0	2

CARD ACCUMULATIONS

Player	Yellow	Red
Ceri Holland	2	0
Isabella Cavalcante	1	0
Mandi Duggan	1	0
Katie McClure	1	0
Addysn Merrick	1	0
Sarah Peters	1	0
Mya Sheridan	1	0

Yellow Accumulation Rule: Any player(s) or coach(es) who have received a total of **five cautions in one season** shall be suspended and shall not participate in the next regularly scheduled game, including postseason games.



HEAD COACH

MARK FRANCIS

21st SEASON AT KANSAS, 1999-PRESENT

Collegiate Record: 262-192-36 (.571)

At Kansas: 229-167-35 (.571) / **Big 12:** 88-88-15 (.500)

Alma Mater: SMU, 1987 / **Hometown:** London, England

KU IN THE FRANCIS ERA

14 seasons with 10 or more victories
First-Ever Big 12 Championship in **2004**
Eight NCAA Tournament Appearances
 KU's First-Ever **Sweet 16** Appearance
 Achieved First-Ever **Top-10** Ranking
Six All-Americans
Four Freshman All-Americans
74 All-Big 12 Selections
25 NSCAA All-Central Region Players
Four Academic All-Americans
177 Academic All-Big 12 Selections
14-Time NSCAA Team Academic Award

Continuity is an essential part of a successful athletic program, and in his first 20 seasons at the helm of Kansas soccer, head coach Mark Francis has brought just that.

After taking over a program just past its infancy, Francis effectively etched his signature on Kansas soccer by becoming not only the winningest coach in its history, but leading his team to eight NCAA Tournaments, 16 Big 12 Championship Tournaments and helping 74 student-athletes garner all-conference accolades, including six that went on to earn All-America status.

Since 1999, Francis has amassed a 219-163-34 record, with 14 seasons of at least 10 victories. He is ranked second among active Big 12 coaches in wins at a single school. He also leads the league among active coaches with his 86 career Big 12 victories.

Francis' résumé is extensive, as he has coached and played at nearly all levels of the game. Francis worked his way up through the head coaching ranks wearing a whistle at the high school, junior college, Division I and professional levels. As a player, Francis was a three-time All-American at SMU and spent 10 seasons playing professionally in the APSL, the NPSL and the USISL.

After moving into its new, state-of-the-art facility at Rock Chalk Park in 2014, Francis' program took another step forward, elevating itself as one of the top teams in the Big 12 and a perennial top-25 NCAA squad. Now as the tenants of one of the top soccer facilities in the U.S., Francis and his staff are attracting some of the top talent from across the globe to Lawrence and the results over the last five seasons can back up the progress being made. Francis saw his Jayhawk team take the program even further in 2018 as he coached Kansas to its eighth NCAA Tournament appearance and their fifth in the second round of the Big Dance.

Francis helped his squad to their highest Big 12 finish in over a decade in 2016 as the Jayhawks posted a second-place finish on the league table, only suffering one loss in the conference season.

It was a season to remember for Francis and the Jayhawks in 2014, as he led his squad to one of the best seasons in program history. He picked up his 200th career coaching victory in KU's 4-1 win over Wake Forest and proceed to see his team reel off eight-straight wins to start the season, the best start in program history. His team ended the year with 15 victories, the third-most ever by a Jayhawk squad and made the program's sixth NCAA tournament appearance. Junior Liana Salazar also had a breakout season in becoming Kansas' sixth All-America honoree after she was named to the Third Team.

Francis tallied his 150th KU coaching victory in 2012 and led his squad to its 10th 10-win season during his tenure in Lawrence. Senior Whitney Berry became KU's all-time assists leader (32) and the program's 11th player to be named to the All-Big 12 First Team.

The 2008 season was one for the record books as Kansas recorded 13 wins and returned to the NCAA Tournament. The Jayhawks knocked off four nationally-ranked teams en route to their tournament berth, including a pair of wins over long-time nemesis Texas A&M. KU became the first team in three years to defeat the Aggies twice in the same season.

The Jayhawks topped four other ranked teams during the season and capped their remarkable run with a 2-1 triumph over Denver in the first round of the NCAA Tournament. Several players received accolades throughout and following the season. Freshman Emily Cressy was

named a Freshman All-American by Soccer Buzz as well as Soccer America, while teammates Monica Dolinsky and Johnson joined her on the All-Central Region Team. Dolinsky was also named All-Big 12 First Team, while Cressy became KU's first Big 12 Rookie of the Year.

The 2004 season was a year filled with program firsts as numerous records were broken. The Jayhawks compiled a program-best record of 18-5 on their way to the Big 12 Championship. It was the first for the soccer team and second among KU women's sports, the first going to basketball in 1997. Francis earned Big 12 Coach of the Year as well as the Central Region Coach of the Year honors. He also won his 100th overall match with a victory against Texas Tech on Oct. 1.

In 2003, Kansas soccer reached new heights under Francis' leadership. The Jayhawks posted an 18-6-1 mark and advanced to the Sweet 16 round of the NCAA Tournament. With a 6-3-1 record in the Big 12, KU finished third. Along with the team accomplishments, several players were honored for their efforts during the 2003 campaign, including Caroline Smith being named to several All-America teams as well as Holly Gault being selected as a Freshman All-American by Soccer Buzz. With Francis' help, KU's players etched their names in the record book, as Smith became the program's all-time leader in goals, points and game-winning goals and Miller set the school mark in career shutouts and career GAA.

In 2002, Francis led Kansas to an overall record of 11-7-2, including a then-school record six-straight wins and a seven-game unbeaten streak during the first half of the season. The Jayhawks opened the season 6-1-1, marking their best start ever. Francis' team ranked in the Central Region's Top 10 for 10 consecutive weeks.

FRANCIS BY THE NUMBERS

Year	School	Record	Conf. Rec(Finish)	Conf. Tournament	NCAA
1996	South Alabama	2-17-0	--	--	--
1997	South Alabama	18-3-1	5-0-0 (1st)	Champion (2-0-0)	--
1998	South Alabama	13-5-0	5-0-0 (1st)	Semifinals (0-1-0)	--
1999	Kansas	8-10-1	3-6-1 (9th)	--	--
2000	Kansas	7-11-2	3-6-1 (18th)	Quarterfinals (0-1-0)	--
2001	Kansas	13-7-0	7-3-0 (4th)	Quarterfinals (0-1-0)	First Round (0-1-0)
2002	Kansas	11-7-2	4-5-1 (6th)	Quarterfinals (0-1-0)	--
2003	Kansas	18-6-1	6-3-1 (3rd)	Semifinals (1-1-0)	Sweet 16 (2-1-0)
2004	Kansas	18-5-0	8-2-0 (1st)	Semifinals (1-1-0)	Second Round (1-1-0)
2005	Kansas	11-7-2	6-3-1 (12nd)	Quarterfinals (0-1-0)	--
2006	Kansas	11-7-1	6-4-0 (4th)	Quarterfinals (0-0-1)	--
2007	Kansas	7-10-4	5-2-3 (13rd)	Quarterfinals (0-1-0)	--
2008	Kansas	13-8-2	4-5-1 (7th)	Semifinals (1-0-1)	Second Round (1-1-0)
2009	Kansas	12-8-2	4-6-0 (17th)	Quarterfinals (0-1-0)	--
2010	Kansas	6-13-0	1-9-0 (11th)	--	--
2011	Kansas	11-9-1	3-5-0 (16th)	Quarterfinals (0-0-1)	First Round (0-1-0)
2012	Kansas	10-8-2	3-5-0 (6th)	Quarterfinals (0-1-0)	--
2013	Kansas	7-11-2	2-5-1 (8th)	Quarterfinals (0-1-0)	--
2014	Kansas	15-6-0	5-3-0 (3rd)	Quarterfinals (0-1-0)	First Round (0-1-0)
2015	Kansas	10-9-2	3-4-1 (6th)	Final (2-1-0)	--
2016	Kansas	11-6-4	5-1-2 (2nd)	Quarterfinals (0-1-0)	Second Round (1-1-0)
2017	Kansas	8-9-3	3-5-1 (6th)	Quarterfinals (0-1-0)	--
2018	Kansas	12-6-3	5-4-0 (6th)	Quarterfinals (0-0-1)	Second Round (1-1-0)
2019	Kansas	10-4-1	2-2-1	--	--
At Kansas	21 seasons	229-167-35 (.571)	88-88-15 (.500)	5-14-4 (.212)	5-8-0 (.385)
OVERALL	24 seasons	262-192-36 (.571)	97-88-15 (.523)	7-15-4 (.346)	5-8-0 (.385)

CATEGORICAL RECORDS

	Big 12	Overall		Big 12	Overall
Overall	2-2-1	10-4-1	vs. RPI 1-25 opponents	0-1-1	0-2-1
Home	1-1-0	6-2-0	vs. RPI 26-50 opponents	1-1-0	3-1-0
Road	1-1-1	4-1-1	vs. RPI 51-100 opponents	1-0-0	5-1-0
Neutral Sites	0-0-0	0-1-0	vs. RPI 101-150 opponents	0-0-0	2-0-0
			vs. RPI 151+ opponents	0-0-0	0-0-0
On Thursdays	1-2-0	3-3-0	vs. UnitedSoccer ranked opponents	0-1-1	1-2-1
On Fridays	0-0-0	1-1-0	vs. UnitedSoccer Top-10 opponents	0-0-0	0-1-0
On Sundays	1-0-1	6-0-1	vs. UnitedSoccer unranked opponents	2-1-0	9-2-0
When Scoring First	2-0-0	8-0-0	vs. nonconference opponents	0-0-0	8-2-0
When Opponent Scores First	0-2-0	2-4-0			
When Leading at Half	1-0-0	5-0-0	In one-goal games	1-1-0	5-2-0
When Trailing at Half	0-1-0	2-1-0			
When Tied at Half	1-1-1	3-2-1	In 90+ degrees	0-0-0	0-0-0
In Regulation	1-2-0	9-4-0	In 80-89 degrees	1-0-1	2-1-1
In Overtime	1-0-1	1-0-1	In 70-79 degrees	0-1-0	5-2-0
In August	0-0-0	3-0-0	In 60-69 degrees	0-1-0	2-1-0
In September	1-1-0	6-3-0	In 50-59 degrees	1-0-0	1-0-0
In October	1-1-1	1-1-1	In sub-50 degrees	0-0-0	0-0-0
In November	0-0-0	0-0-0			
When scoring zero goals	0-1-1	0-3-1	Wearing white uniforms	1-1-0	3-2-0
When scoring one goal	1-0-0	3-0-0	Wearing blue uniforms	0-0-1	5-1-1
When scoring two goals	0-1-0	3-1-0	Wearing red uniforms	0-1-0	1-1-0
When scoring three goals	0-0-0	1-0-0	Wearing alternate uniforms	1-0-0	1-0-0
When scoring four goals or more	1-0-0	3-0-0			
When allowing zero goals	1-0-1	6-0-1	In televised games	2-2-1	9-3-1
When allowing one goal	1-1-0	4-2-0			
When allowing two goals	0-0-0	0-1-0			
When allowing three goals	0-0-0	0-0-0			
When allowing four goals or more	0-1-0	0-1-0			
When outshooting opponent	0-2-1	5-3-1			
When being outshot	2-0-0	5-1-0			
When tied in shots	0-0-0	0-0-0			

MISCELLANEOUS STATS

QUICKEST GOAL:

Katie McClure (2:54) vs. Nebraska, 8/22/19

QUICKEST GOAL AGAINST:

Stasia Mallin (8:44) of Memphis, 8/29/19

GAME-WINNING GOALS AFTER 75':

Katie McClure (88:54) vs. Memphis, 8/29/19

Kailey Lane (84:51) at Purdue, 9/8/19

Chais Wright (79:43) at W. Michigan, 9/15/19

Mandi Duggan (98:07) at Oklahoma, 10/10/19

GAME-TYING GOALS AFTER 75':

GAME-WINNING GOALS AGAINST AFTER 75':

GAME-TYING GOALS AGAINST AFTER 75':

MULTI-GOAL GAMES:

Katie McClure (3) vs. Nebraska, 8/22/19

Ceri Holland (2) vs. Loyola-Chicago, 8/25/19

Katie McClure (2) vs. Kennesaw State, 9/22/19

Mandi Duggan (2) vs. Baylor, 9/29/19

MULTI-GOAL GAMES AGAINST:

Charme Margan (2) vs. Oklahoma State, 10/3/19

HAT TRICKS:

Katie McClure vs. Nebraska, 8/22/19

HAT TRICKS AGAINST:

OWN GOALS FOR:

OWN GOALS AGAINST:

RED CARDS:

OPPONENT RED CARDS:

STARTERS - BY MATCH

	GK	F	F	M	M	M	D	D	D	D	D
Nebraska (8/22)	Peters	McClure	Amos	Costow	Maierhofer	Holland	Prybylski	Hansen	Merrick	Cavalcante	Reina
Loyola-Chicago (8/25)	Peters	McClure	Amos	Costow	Maierhofer	Holland	Prybylski	Hansen	Merrick	Cavalcante	Reina
Memphis (8/29)	Peters	McClure	Amos	Costow	Maierhofer	Holland	Prybylski	Hansen	Merrick	Cavalcante	Reina
Florida Atlantic (9/1)	Peters	McClure	Amos	Costow	Maierhofer	Holland	Reina	Hansen	Merrick	Meador	Cavalcante
DePaul (9/6)	Peters	McClure	Amos	Costow	Maierhofer	Holland	Bradley	Hansen	Merrick	Meador	Cavalcante
Purdue (9/8)	Peters	McClure	Lane	Castro	Maierhofer	Holland	Bradley	Hansen	Merrick	Meador	Cavalcante
Northwestern (9/13)	Peters	McClure	Lane	Castro	Maierhofer	Holland	Prybylski	Hansen	Merrick	Meador	Cavalcante
Western Michigan (9/15)	Peters	McClure	Lane	Castro	Maierhofer	Holland	Prybylski	Hansen	Merrick	Meador	Cavalcante
BYU (9/19)	Peters	McClure	Lane	Castro	Maierhofer	Holland	Prybylski	Hansen	Merrick	Meador	Cavalcante
Kennesaw State (9/22)	Peters	McClure	Lane	Castro	Maierhofer	Holland	Prybylski	Hansen	Merrick	Meador	Cavalcante
Texas (9/26)	Peters	McClure	Lane	Castro	Maierhofer	Holland	Prybylski	Hansen	Merrick	Meador	Cavalcante
Baylor (9/29)	Peters	McClure	Lane	Costow	Maierhofer	Holland	Prybylski	Hansen	Merrick	Cavalcante	Wiltgen
Oklahoma State (10/3)	Peters	McClure	Lane	Costow	Maierhofer	Holland	Prybylski	Hansen	Merrick	Cavalcante	Wiltgen
Oklahoma (10/10)	Peters	McClure	Duggan	Costow	Maierhofer	Holland	Prybylski	Hansen	Merrick	Cavalcante	Wiltgen
Texas Tech (10/13)	Peters	McClure	Duggan	Costow	Maierhofer	Holland	Prybylski	Hansen	Merrick	Cavalcante	Wiltgen
Kansas State (10/18)											
West Virginia (10/24)											
TCU (10/27)											
Iowa State (10/31)											

THE LAST TIME...

TEAM

Home Win.....4-1 vs. Baylor, Sept. 29, 2019
 Home Loss.....0-1 vs. Texas, Sept. 16, 2019
 Home Tie.....1-1 vs. Oklahoma State, Oct. 9, 2016

Away Win1-0 at Oklahoma, Oct. 10, 2019
 Away Loss.....2-5 at Oklahoma State, Oct. 3, 2019
 Away Tie0-0 (2 OT) at Texas Tech, Oct. 13, 2019

Neutral Win.....3-0 vs. Oregon State, Aug. 24, 2018
 Neutral Loss0-1 vs. DePaul, Sept. 6, 2019
 Neutral Tie0-0 (2 OT) vs. Texas, Oct. 28, 2018

OT Win1-0 (OT) at Oklahoma, Oct. 10, 2019
 OT Loss.....1-2 (OT) vs. Texas Tech, Oct. 14, 2018
 Played 2 OTs.....0-0 (2 OT) at Texas Tech, Oct. 13, 2019

Big 12 Win.....1-0 at Oklahoma, Oct. 10, 2019
 Big 12 Loss2-5 vs. Oklahoma State, Oct. 3, 2019
 Big 12 Tie.....0-0 (2 OT) at Texas Tech, Oct. 13, 2019

Win over Top-25 team.....2-1 vs. #20 Memphis, Aug. 29, 2019
 Win over Top-10 team2-1 vs. #9 Texas, Oct. 13, 2017

Scored 0 Goals.....vs. Texas Tech, Oct. 13, 2019
 Scored 1 Goal.....at Oklahoma, Oct. 10, 2019
 Scored 2 Goals.....at Oklahoma State, Oct. 3, 2019
 Scored 3 Goalsvs. Kennesaw State, Sept. 22, 2019
 Scored 4 Goals.....vs. Baylor, Sept. 29, 2019
 Score 5+ Goals6 vs. Loyola-Chicago, Aug. 25, 2019

Allowed 0 Goalsvs. Texas Tech, Oct. 13, 2019
 Allowed 1 Goalvs. Baylor, Sept. 29, 2019
 Allowed 2 Goals.....vs. BYU, Sept. 19, 2019
 Allowed 3 Goals.....at Baylor, Oct. 21, 2018
 Allowed 4 Goals.....at North Carolina, Nov. 16, 2018
 Allowed 5+ Goals5 at Oklahoma State, Oct. 6, 2019

Amassed 20+ Shots.....31 at Western Michigan, Sept. 15, 2019
 Amassed 30+ Shots.....31 at Western Michigan, Sept. 15, 2019

Allowed 20+ Shots.....(20) DePaul, Sept. 6, 2019
 Allowed 30+ Shots.....(33) Texas, Nov. 5, 2004

Amassed 10+ Shots on Goal.....15 at Western Michigan, Sept. 15, 2019
 Amassed 15+ Shots on Goal15 at Western Michigan, Sept. 15, 2019

Allowed 10+ Shots on Goal.....10 at Oklahoma State, Oct. 3, 2019
 Allowed 15+ Shots on Goal20 by Georgia, Aug. 29, 2010

Amassed 10+ Corner Kicks10 at Iowa State, Sept. 29, 2017
 Allowed 10+ Corner Kicks12 vs. TCU, Nov. 1, 2017

Called for 15+ Fouls15 vs. Oklahoma, Oct. 10, 2019
 Called for 25+ Fouls25 vs. Oklahoma State, Oct. 9, 1998

Opponent Called for 15+ Fouls.....(17) Texas Tech, Sept. 24, 2017
 Opponent Called for 25+ Fouls.....(27) Oklahoma State, Oct. 9, 2016

Scored 1 Penalty Kick.....vs. Memphis, Aug. 29, 2019
 Scored 2 Penalty Kicks.....vs. Texas Tech, Sept. 23, 2016

Allowed 1 Penalty Kickvs. Texas, Oct. 19, 2018
 Allowed 2 Penalty Kicks.....Oral Roberts, Sept. 27, 2009

INDIVIDUAL

Hat Trick.....Katie McClure vs. Nebraska (Aug. 22, 2019)
 Brace.....(2) Mandi Duggan vs. Baylor (Sept. 29, 2019)

2 AssistsKatie McClure vs. Baylor (Sept. 19, 2019)
 3 AssistsWhitney Berry vs. Texas (Sept. 30, 2011)

3 Points (Goal+Assist)Katie McClure vs. Purdue (Sept. 8, 2019)
 5+ Points.....(5) Ceri Holland vs. Loyola-Chicago (Aug. 25, 2019)

8+ Shots.....(8) Grace Hagan at Cincinnati (Sept. 6, 2018)
 10+ Shots(12) Caroline Smith vs. Missouri (Oct. 28, 2005)

5+ Shots on Goal(5) Grace Hagan vs. Saint Louis (Sept. 14, 2018)

Scored Penalty KickCeri Holland vs. Memphis (Aug. 29, 2019)
 Missed Penalty KickCeri Holland vs. Texas (Oct. 19, 2018)

10+ Saves(11) Kaitlyn Stroud vs. Oklahoma (Nov. 1, 2013)
 ShutoutSarah Peters at Texas Tech (Oct. 13, 2019)

Red CardHannah Lukinac at TCU (Sept. 22, 2017)

INDIVIDUAL OPPONENT

Hat Trick.....Anna Canniglia, Nebraska (Oct. 23, 2009)
 Brace.....Charme Morgan, Oklahoma State (Oct. 3, 2019)

2 AssistsJaci Jones, Oklahoma State (Oct. 3, 2019)
 3+ Assists.....(3) Julia Ashley, North Carolina (Nov. 16, 2018)

3 PointsJulia Ashley & Rachael Dorwart, North Carolina (Nov. 16, 2018)
 5+ Points.....(5) Amanda Hill, West Virginia (Oct. 16, 2015)

8+ Shots.....(8) Nadia Gomes, BYU (Sept. 18, 2017)
 10+ Shots(13) Courtney Saunders, Baylor (Oct. 2, 1998)

5+ Shots on Goal(6) Maddie Pokorny, Saint Louis (Nov. 9, 2017)

Scored Penalty KickKayra Dollas, Texas (Oct. 19, 2018)
 Missed Penalty KickPaula Leblic, Oregon State (Aug. 27, 2017)

10+ Saves(13) Maggie Rogers, Western Michigan (Sept. 15, 2019)
 ShutoutMadison White, Texas Tech (Oct. 13, 2019)

Red CardKassidie Stade, Oklahoma (Nov. 1, 2013)

OVERALL STATISTICS



2019 Kansas Soccer
Kansas Overall Individual Statistics (as of Oct 13, 2019)
All games



Overall: 10-4-1 Conf: 2-2-1 Home: 6-2-0 Away: 4-1-1 Neut: 0-1-0

##	Player	gp-gs	min	g	a	pts	sh	sh%	sog	sog%	yc	rc	gwg	pk-att	fg	ot	hat	gtg	foul	cnr
12	McClure, Katie	15-15	983	9	6	24	49	.184	19	.388	1	0	5	0-0	3	0	1	1	5	0
15	Holland, Ceri	15-15	1125	4	3	11	39	.103	16	.410	2	0	0	2-2	0	0	0	1	3	3
4	Lane, Kailey	15-8	677	4	1	9	13	.308	7	.538	0	0	3	0-0	1	0	0	0	3	0
22	Duggan, Mandi	15-2	540	4	0	8	15	.267	10	.667	1	0	1	0-0	2	1	0	0	1	1
28	Amos, Bri	15-5	539	1	3	5	9	.111	5	.556	0	0	0	0-0	0	0	0	0	4	4
27	Maierhofer, Sophie	15-15	1180	2	0	4	13	.154	4	.308	0	0	0	0-0	1	0	0	0	3	3
8	Costow, Ebba	15-9	630	1	2	4	2	.500	1	.500	0	0	0	0-0	0	0	0	0	1	24
2	Prybylski, Ellie	15-12	776	0	4	4	4	.000	1	.250	0	0	0	0-0	0	0	0	0	0	19
14	Barnett, Samantha	15-0	499	1	1	3	12	.083	6	.500	0	0	0	0-0	0	0	0	0	1	0
13	Castro, Kathryn	15-6	542	1	0	2	15	.067	7	.467	0	0	0	0-0	0	0	0	0	0	3
11	Wright, Chais	10-0	217	1	0	2	5	.200	3	.600	0	0	1	0-0	1	0	0	0	0	0
21	Cavalcante, Isabella	15-15	1172	0	2	2	11	.000	3	.273	1	0	0	0-0	0	0	0	0	2	0
26	Merrick, Addisyn	15-15	1320	0	1	1	2	.000	0	.000	1	0	0	0-0	0	0	0	0	0	0
10	Briley, Gracely	6-0	122	0	0	0	6	.000	1	.167	0	0	0	0-0	0	0	0	0	0	2
19	Eliasdottir, Eva	8-0	229	0	0	0	5	.000	1	.200	0	0	0	0-0	0	0	0	0	0	0
7	Hall, Avery	7-0	89	0	0	0	3	.000	2	.667	0	0	0	0-0	0	0	0	0	0	0
6	Hansen, Kaela	15-15	1125	0	0	0	3	.000	0	.000	0	0	0	0-0	0	0	0	0	2	0
23	Wiltgen, Grace	14-4	556	0	0	0	2	.000	1	.500	0	0	0	0-0	0	0	0	0	0	0
9	Meador, Madison	13-8	660	0	0	0	2	.000	0	.000	0	0	0	0-0	0	0	0	0	0	0
24	Reina, Elise	4-4	236	0	0	0	1	.000	1	1.000	0	0	0	0-0	0	0	0	0	0	8
16	Bradley, Italia	13-2	403	0	0	0	1	.000	0	.000	0	0	0	0-0	0	0	0	0	0	1
20	Giubilato, Margherit	3-0	38	0	0	0	0	.000	0	.000	0	0	0	0-0	0	0	0	0	0	0
18	Gavillet, Emilie	1-0	10	0	0	0	0	.000	0	.000	0	0	0	0-0	0	0	0	0	0	0
17	Beyer, Lia	3-0	63	0	0	0	0	.000	0	.000	0	0	0	0-0	0	0	0	0	0	0
3	Sheridan, Mya	7-0	73	0	0	0	0	.000	0	.000	1	0	0	0-0	0	0	0	0	0	0
1	Pasar, Melania	2-0	37	0	0	0	0	.000	0	.000	0	0	0	0-0	0	0	0	0	0	0
00	Peters, Sarah	15-15	1331	0	0	0	0	.000	0	.000	1	0	0	0-0	0	0	0	0	1	0
Total		15	-	28	23	79	212	.132	88	.415	8	0	10	2-2	8	1	1	2	144	-
Opponents		15	-	13	9	35	155	.084	56	.361	6	0	4	0-1	6	0	0	0	129	-

#	Goalie	gp-gs	Goal Average			Saves		Record				Shots faced
			min	ga	gaavg	saves	pct	w	l	t	sho/cbo	
18	Gavillet, Emilie	1-0	9:31	0	0.00	0	.000	0	0	0	0/1	0
00	Peters, Sarah	15-15	1331:50	12	0.81	41	.774	10	4	1	6/1	149
1	Pasar, Melania	2-0	36:46	1	2.45	0	.000	0	0	0	0/1	3
TM TEAM		-	0:00	0	0.00	2	1.000	0	0	0	1/0	0
Total		15	1378:07	13	0.85	43	.768	10	4	1	7	152
Opponents		15	1378:07	28	1.83	60	.682	4	10	1	4	210

Team saves: 2

Goals by Period	1st	2nd	OT	OT2	Total
Kansas	13	14	1	0	28
Opponents	5	8	0	0	13

Shots by Period	1st	2nd	OT	OT2	Total
Kansas	88	118	6	0	212
Opponents	76	74	4	1	155

Saves by Period	1st	2nd	OT	OT2	Total
Kansas	26	15	1	1	43
Opponents	26	33	1	0	60

Corners by Period	1st	2nd	OT	OT2	Total
Kansas	29	56	1	0	86
Opponents	27	27	0	2	56

Fouls by Period	1st	2nd	OT	OT2	Total
Kansas	65	77	0	2	144
Opponents	64	62	2	1	129

Attendance Summary	KU	Opponent
Total	4580	3333
Dates/Avg Per Date	8/572	6/556
Neutral Site #/Avg	1/137	

CONFERENCE STATISTICS



2019 Kansas Soccer
Kansas Overall Individual Statistics (as of Oct 13, 2019)
Conference games



Overall: 2-2-1 Conf: 2-2-1 Home: 1-1-0 Away: 1-1-1 Neut: 0-0-0

##	Player	gp-gs	min	g	a	pts	sh	sh%	sog	sog%	yc	rc	gwg	pk-att	fg	ot	hat	gtg	foul	cnr
22	Duggan, Mandi	5-2	287	4	0	8	5	.800	4	.800	0	0	1	0-0	2	1	0	0	0	1
12	McClure, Katie	5-5	394	0	3	3	15	.000	5	.333	1	0	0	0-0	0	0	0	0	0	0
15	Holland, Ceri	5-5	425	1	0	2	13	.077	7	.538	2	0	0	0-0	0	0	0	0	0	3
4	Lane, Kailey	5-3	221	1	0	2	5	.200	2	.400	0	0	1	0-0	0	0	0	0	0	0
8	Costow, Ebba	5-4	208	1	0	2	1	1.000	1	1.000	0	0	0	0-0	0	0	0	0	0	8
2	Prybylski, Ellie	5-5	274	0	1	1	3	.000	1	.333	0	0	0	0-0	0	0	0	0	0	9
28	Amos, Bri	5-0	124	0	1	1	0	.000	0	.000	0	0	0	0-0	0	0	0	0	0	2
19	Eliasdottir, Eva	5-0	146	0	0	0	4	.000	1	.250	0	0	0	0-0	0	0	0	0	0	0
27	Maierhofer, Sophie	5-5	466	0	0	0	3	.000	0	.000	0	0	0	0-0	0	0	0	0	0	1
21	Cavalcante, Isabella	5-5	478	0	0	0	3	.000	1	.333	0	0	0	0-0	0	0	0	0	0	0
14	Barnett, Samantha	5-0	221	0	0	0	3	.000	2	.667	0	0	0	0-0	0	0	0	0	0	0
23	Wiltgen, Grace	5-4	257	0	0	0	1	.000	0	.000	0	0	0	0-0	0	0	0	0	0	0
13	Castro, Kathryn	5-1	148	0	0	0	1	.000	0	.000	0	0	0	0-0	0	0	0	0	0	2
26	Merrick, Addisyn	5-5	472	0	0	0	0	.000	0	.000	0	0	0	0-0	0	0	0	0	0	0
16	Bradley, Italia	5-0	148	0	0	0	0	.000	0	.000	0	0	0	0-0	0	0	0	0	0	0
11	Wright, Chais	3-0	64	0	0	0	0	.000	0	.000	0	0	0	0-0	0	0	0	0	0	0
9	Meador, Madison	3-1	48	0	0	0	0	.000	0	.000	0	0	0	0-0	0	0	0	0	0	0
7	Hall, Avery	1-0	2	0	0	0	0	.000	0	.000	0	0	0	0-0	0	0	0	0	0	0
6	Hansen, Kaela	5-5	386	0	0	0	0	.000	0	.000	0	0	0	0-0	0	0	0	0	0	0
3	Sheridan, Mya	1-0	10	0	0	0	0	.000	0	.000	1	0	0	0-0	0	0	0	0	0	0
Total		5	-	7	5	19	57	.123	24	.421	4	0	2	0-0	2	1	0	0	48	-
Opponents		5	-	7	6	20	67	.104	29	.433	4	0	2	0-1	2	0	0	0	47	-

#	Goalie	gp-gs	Goal Average			Saves		Record				Shots faced
			min	ga	gaavg	saves	pct	w	l	t	sho/cbo	
00	Peters, Sarah	5-5	478:07	7	1.32	21	.750	2	2	1	2/0	65
TM	TEAM	-	0:00	0	0.00	1	1.000	0	0	0	0/0	0
Total		5	478:07	7	1.32	22	.759	2	2	1	2	65
Opponents		5	478:07	7	1.32	17	.708	2	2	1	2	57

Team saves: 1

Goals by Period	1st	2nd	OT	OT2	Total
Kansas	1	5	1	0	7
Opponents	3	4	0	0	7

Shots by Period	1st	2nd	OT	OT2	Total
Kansas	18	33	6	0	57
Opponents	33	29	4	1	67

Saves by Period	1st	2nd	OT	OT2	Total
Kansas	12	8	1	1	22
Opponents	5	11	1	0	17

Corners by Period	1st	2nd	OT	OT2	Total
Kansas	8	17	1	0	26
Opponents	11	10	0	2	23

Fouls by Period	1st	2nd	OT	OT2	Total
Kansas	20	26	0	2	48
Opponents	21	23	2	1	47

Attendance Summary	KU	Opponent
Total	1448	1874
Dates/Avg Per Date	2/724	3/625
Neutral Site #/Avg	0/0	

KANSAS TEAM STATS GAME-BY-GAME

Date	Opponent	Score	G	A	Pts	Sh	Sh%	Sog	Sog%	GW	GT	UA	OT	PK-Att	YC	RC	Min
Aug 22, 2019	NEBRASKA	4-0	4	3	11	15	.267	6	.400	1	0	2	0	0-0	0	0	991
Aug 25, 2019	LOYOLA-CHICAGO	6-0	6	6	18	23	.261	12	.522	1	0	2	0	1-1	0	0	991
Aug 29, 2019	MEMPHIS	2-1	2	1	5	10	.200	7	.700	1	1	1	0	1-1	1	0	991
Sep 01, 2019	FLORIDA ATLANTIC	1-0	1	2	4	4	.250	1	.250	1	0	0	0	0-0	0	0	990
Sep 06, 2019	vs DePaul	0-1	0	0	0	20	.000	3	.150	0	0	0	0	0-0	0	0	990
Sep 08, 2019	at Purdue	2-1	2	3	7	13	.154	5	.385	1	1	0	0	0-0	2	0	989
Sep 13, 2019	at Northwestern	1-0	1	1	3	8	.125	4	.500	1	0	0	0	0-0	1	0	991
Sep 15, 2019	at Western Michigan	2-0	2	1	5	31	.065	15	.484	1	0	1	0	0-0	0	0	990
Sep 19, 2019	BYU	0-2	0	0	0	12	.000	4	.333	0	0	0	0	0-0	0	0	1003
Sep 22, 2019	KENNESAW STATE	3-1	3	1	7	19	.158	7	.368	1	0	2	0	0-0	0	0	989
Sep 26, 2019	TEXAS	0-1	0	0	0	12	.000	1	.083	0	0	0	0	0-0	0	0	989
Sep 29, 2019	BAYLOR	4-1	4	4	12	10	.400	5	.500	1	0	1	0	0-0	1	0	989
Oct 03, 2019	at Oklahoma State	2-5	2	1	5	14	.143	7	.500	0	0	1	0	0-0	2	0	990
Oct 10, 2019	at Oklahoma	1-0	1	0	2	10	.100	4	.400	1	0	1	1	0-0	1	0	1079
Oct 13	at Texas Tech	0-0	0	0	0	11	.000	7	.636	0	0	0	0	0-0	0	0	1210
		28-13	28	23	79	212	.132	88	.415	10	2	11	1	2-2	8	0	15172
Opponent			13	9	35	155	.084	56	.361	4	0	6	0	0-1	6	0	-

TEAM PER-GAME

Games played: 15

Shots per game: 14.13;Goals per game: 1.87

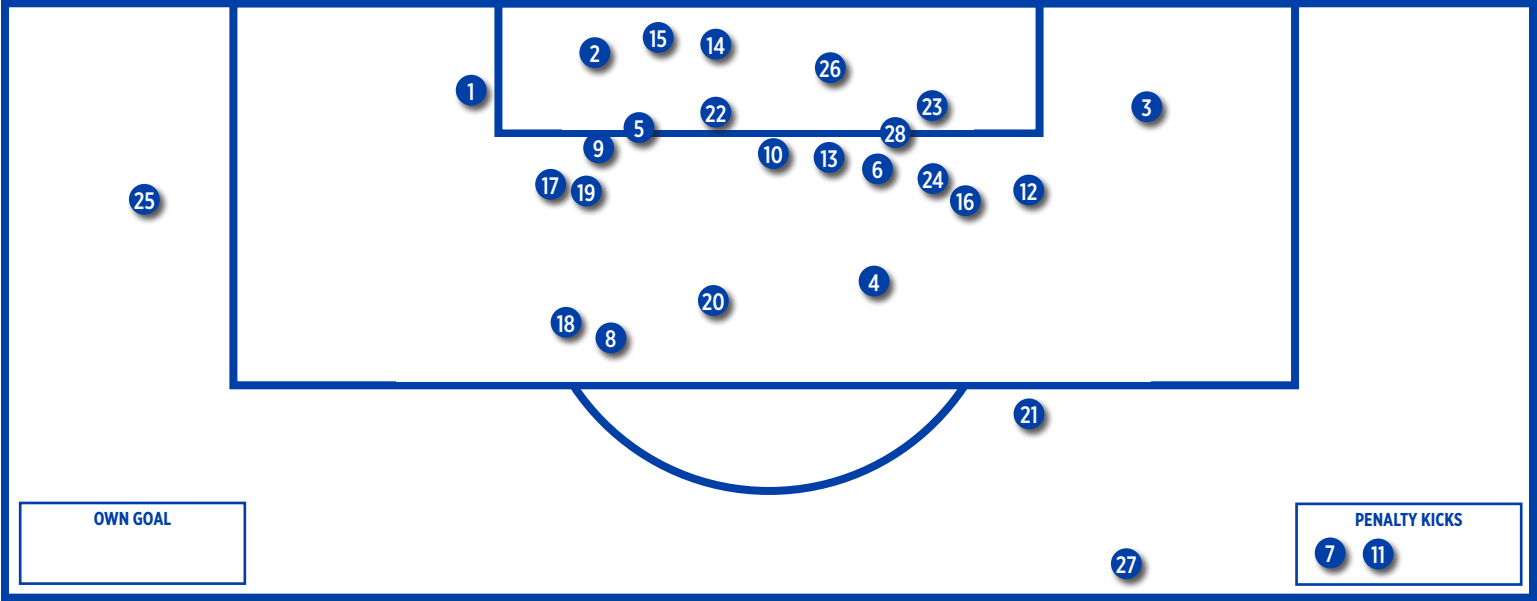
Assists per game: 1.53;Points per game: 5.27

KANSAS GAME-BY-GAME COMPARISON (KANSAS/OPPONENT)

Date	Opponent	Score	Goals	Assists	Shots	On Goal	Corners	CKgoals	Fouls	YC	RC	Offside
Aug 22	NEBRASKA	4-0	4/0	3/0	15/13	6/3	3/5	0/0	9/4	0/0	0/0	4/3
Aug 25	LOYOLA-CHICAGO	6-0	6/0	6/0	23/3	12/0	8/2	1/0	10/8	0/0	0/0	0/1
Aug 29	MEMPHIS	2-1	2/1	1/0	10/11	7/3	4/4	0/1	18/14	1/0	0/0	1/1
Sep 01	FLORIDA ATLANTIC	1-0	1/0	2/0	4/9	1/2	8/4	0/0	8/13	0/1	0/0	4/1
Sep 06	DePaul	0-1	0/1	0/0	20/5	3/1	9/2	0/0	6/6	0/0	0/0	1/0
Sep 08	Purdue	2-1	2/1	3/1	13/18	5/8	3/3	0/0	13/11	2/0	0/0	3/3
Sep 13	Northwestern	1-0	1/0	1/0	8/3	4/3	6/4	0/0	7/10	1/0	0/0	0/1
Sep 15	Western Michigan	2-0	2/0	1/0	31/5	15/1	6/2	0/0	13/7	0/0	0/0	2/0
Sep 19	BYU	0-2	0/2	0/1	12/16	4/4	6/5	0/0	6/5	0/1	0/0	4/3
Sep 22	KENNESAW STATE	3-1	3/1	1/1	19/5	7/2	7/2	0/0	6/4	0/0	0/0	4/0
Sep 26	TEXAS	0-1	0/1	0/2	12/9	1/5	9/3	0/0	5/8	0/1	0/0	2/1
Sep 29	BAYLOR	4-1	4/1	4/1	10/15	5/4	4/9	1/1	5/9	1/2	0/0	2/4
Oct 03	Oklahoma State	2-5	2/5	1/3	14/13	7/10	4/2	0/1	15/9	2/1	0/0	0/2
Oct 10	Oklahoma	1-0	1/0	0/0	10/16	4/6	4/4	0/0	15/10	1/0	0/0	3/0
Oct 13	Texas Tech	0-0	0/0	0/0	11/14	7/4	5/5	0/0	8/11	0/0	0/0	2/1
		28-13	28/13	23/9	212/155	88/56	86/56	2/3	144/129	8/6	0/0	32/21

Note: Game totals are displayed in the format TEAM/OPPONENT for each category

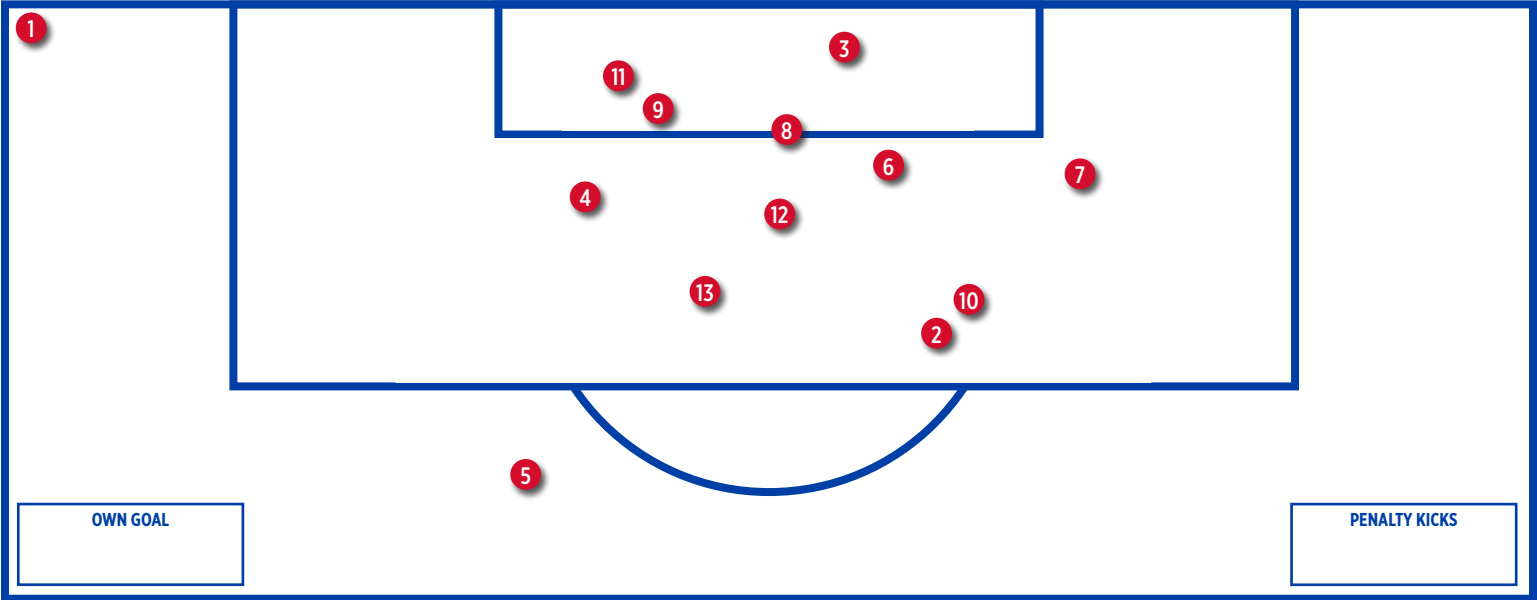
KANSAS GOAL CHART



KANSAS GOAL INFORMATION

1 - Katie McClure (Amos) vs. Nebraska, 2:54	11 - Ceri Holland (penalty) vs. Memphis, 51:42 <	21 - Katie McClure (unassisted) vs. Kennesaw State, 55:38
2 - Bri Amos (McClure, Holland) vs. Nebraska, 8:07	12 - Katie McClure (Cavalcante) vs. Memphis, 88:54	22 - Mandi Duggan (Amos) vs. Baylor, 29:09
3 - Katie McClure (unassisted) vs. Nebraska, 24:18	13 - Katie McClure (Amos, Cavalcante) vs. Florida Atlantic, 12:21	23 - Kailey Lane (McClure, Prybylski) vs. Baylor, 49:52
4 - Katie McClure (unassisted) vs. Nebraska, 77:40	14 - Katie McClure (Barnett) vs. Purdue, 58:14	24 - Mandi Duggan (McClure) vs. Baylor, 80:42
5 - Katie McClure (Holland) vs. Loyola-Chicago, 3:27	15 - Kailey Lane (Prybylski, McClure) vs. Purdue, 84:51	25 - Ebba Costow (unassisted) vs. Baylor, 89:59 *
6 - Sophie Maierhofer (McClure, Prybylski) vs. Loyola-Chicago, 26:59	16 - Kailey Lane (Prybylski) vs. Northwestern, 24:06 *	26 - Ceri Holland (McClure) vs. Oklahoma St., 52:38
7 - Ceri Holland (unassisted) vs. Loyola-Chicago, 27:22 <	17 - Chais Wright (unassisted) vs. Western Michigan, 79:43 *	27 - Mandi Duggan (unassisted) vs. Oklahoma St., 61:22
8 - Kathryn Castro (Lane, Merrick) vs. Loyola-Chicago, 34:41	18 - Samantha Barnett (Costow) vs. Western Michigan, 80:29	28 - Mandi Duggan (unassisted) vs. Oklahoma, 98:07
9 - Kailey Lane (unassisted) vs. Loyola-Chicago, 41:22	19 - Sophie Maierhofer (Holland) vs. Kennesaw State, 7:47	
10 - Ceri Holland (Costow) vs. Loyola-Chicago, 53:04*	20 - Katie McClure (unassisted) vs. Kennesaw State, 17:00	

OPPONENT GOAL CHART



OPPONENT GOAL INFORMATION

1 - Stasia Mallin (Memphis), 8:44 *	11 - Julia Lenhardt (Oklahoma St), 31:01 +
2 - Jade Eriksen-Russo (DePaul), 45:26	12 - Charme Morgan (Oklahoma St), 52:08
3 - Hannah Melchiorre (Purdue), 20:57 *	13 - Gabriella Coleman (Oklahoma St), 70:11
4 - Elise Flake (BYU), 45:33	
5 - Mikayla Colohan (BYU), 47:14	
6 - Camryn Simmons (Kennesaw State), 73:32	
7 - Cyera Hintzen (Texas), 69:36 +	
8 - Michaela Gorman (Baylor), 85:38 *	
9 - Camy Huddleston (Oklahoma St), 9:52 *	
10 - Charme Morgan (Oklahoma St), 28:28	

Key: + Off free kick, < Penalty Kick, * Off Corner

SINGLE MATCH INDIVIDUAL RECORDS

POINTS

No.	Player	Points
1.	Katie McClure (vs. Nebraska, Aug. 22, 2019)	7
	Shannon McCabe (vs. Francis Marion, Oct. 19, 2008)	7
	Caroline Smith (vs. Northwestern, Aug. 29, 2003)	7
3.	Grace Hagan (vs. Saint Louis, Sept. 14, 2018)	6
	Monica Dolinsky (at Missouri, Oct. 15, 2006)	6
	Jessica Smith (vs. Oklahoma State, Oct. 7, 2005)	6
	Caroline Smith (vs. Florida State, Sept. 12, 2003)	6
	Monica Brothers (at Oklahoma State, Sept. 30, 2001)	6
	Natalie Hoogveld (at Colorado, Oct. 14, 2001)	6
	Brianna Valento (vs. St. Louis, Oct. 30, 2001)	6

GOALS

No.	Player	Goals
1.	Katie McClure (vs. Nebraska, Aug. 22, 2019)	3
	Grace Hagan (vs. Saint Louis, Sept. 14, 2018)	3
	Shannon McCabe (vs. Francis Marion, Oct. 19, 2008)	3
	Jessica Smith (vs. Oklahoma State, Oct. 7, 2005)	3
	Caroline Smith (vs. Florida State, Sept. 12, 2003)	3
	Caroline Smith (vs. Northwestern, Aug. 29, 2003)	3
	Brianna Valento (vs. St. Louis, Oct. 30, 2001)	3
	Natalie Hoogveld (at Colorado, Oct. 14, 2001)	3
	Monica Brothers (vs. Oklahoma State, Sept. 30, 2001)	3

ASSISTS

No.	Player	Goals
1.	Hilla Rantala (at Oklahoma State, Sept. 30, 2001)	4
2.	Whitney Berry (vs. Texas, Sept. 30, 2011)	3
	Monica Dolinsky (vs. Texas A&M, Nov. 5, 2008)	3
	Jessica Bush (vs. UAB, Sept. 5, 2008)	3
	Hilla Rantala (vs. St. Louis, Oct. 30, 2001)	3
	Melanie Schroeder (vs. UNLV, Sept. 7, 2001)	3

SHOTS

No.	Player	Shots
1.	Caroline Smith (vs. Missouri, Oct. 28, 2005)	12
2.	Caroline Smith (vs. Colorado, Sept. 27, 2002)	10
	Denise Cooke (vs. CMSU, Oct. 13, 1995)	10

SHOTS ON GOAL

No.	Player	SOG
1.	Caroline Smith (vs. Missouri, Oct. 28, 2005)	7
2.	Caroline Smith (at Mississippi State, Sept. 8, 2002)	6
3.	Grace Hagan (vs. Saint Louis, Sept. 14, 2018)	5
	Ingrid Vidal (at Missouri, Oct. 21, 2011)	5
	Jessica Smith (vs. Oklahoma State, Oct. 7, 2005)	5
	Caroline Smith (vs. UC Irvine, Sept. 16, 2005)	5

	Caroline Smith (vs. Baylor, Oct. 3, 2004)	5
	Nicole Cauzillo (vs. Texas Tech, Oct. 1, 2004)	5
	Caroline Smith (vs. Colorado, Sept. 27, 2002)	5
	Monica Brothers (vs. North Texas, Aug. 31, 2001)	5

SAVES

No.	Player	Saves
1.	Betsy Pollard (at Texas Tech, Oct. 3, 1999)	16
2.	Kat Liebetrau (at Georgia, Aug. 29, 2010)	15
	Laura Rohde (at Mississippi, Oct. 29, 1999)	15
	Jen Fecke (vs. UTEP, Oct. 6, 1996)	15
5.	Betsy Pollard (at Georgia, Sept. 17, 1999)	14
	Betsy Pollard (at Utah, Sept. 3, 1999)	14
	Jen Fecke (at Baylor, Sept. 14, 1997)	14

INDIVIDUAL STREAKS

Consecutive Matches w/ a Point	9
(Hilla Rantala, Aug. 31-Oct. 5, 2001)	
Consecutive Matches w/ a Goal	5 (twice)
(Liana Salazar, Aug. 22 - Sept. 5 2014)	
(Hilla Rantala, Sept. 1-Sept. 23, 2001)	
Consecutive Matches w/ an Assist	4
(Whitney Berry, Sept. 27-Oct. 9, 2009)	

Single Match Team Records

Points (vs. Francis Marion, Oct. 19, 2008)	19
Goals (vs. Francis Marion, Oct. 19, 2008)	7
Assists (last vs. Loyola Chicago, Aug. 25, 2019)	6 (five times)
Shots (vs. Michigan, Aug. 26, 2005)	36
Shots on Goal (vs. Wyoming, Aug. 29, 1999)	20
Saves (at Texas Tech, Oct. 3, 1999)	16
Shots Allowed (at Nebraska, Sept. 22, 1995)	45
Shots on Goal Allowed (at Nebraska, Oct. 15, 1999)	19
Fewest Shots (at Virginia, Sept. 19, 1997)	0
Fewest Shots on Goal (vs. Baylor, Oct. 15, 2017), (vs. West Virginia, Nov. 6, 2013), (at Virginia, Sept. 19, 1997)	0 (3 times)
Corner Kicks (vs. Baylor, Sept. 23, 2005)	21
Fouls (at Oklahoma State, Oct. 9, 1998)	25
Goals (In Defeat) (vs. Nebraska, Oct. 23, 2009 [L, 4-7])	4
Goals (Both Teams) (vs. Nebraska, Oct. 23, 2009 [L, 4-7])	11
Goals Allowed (at Nebraska, Oct. 15, 1999), (at Nebraska, Sept. 22, 1995)	8 (twice)

Consecutive Matches w/ a GWG (Katie McClure, Aug. 22-Sept. 1, 2019)	4
Consecutive Shutouts (Meghan Miller, Aug. 28-Sept. 9, 2004)	5

OPPONENT HIGHS

Points (Anna Caniglia, Nebraska, Oct. 23, 2009)	7
Goals Last: (Anna Caniglia, Nebraska, Oct. 23, 2009)	3 (nine times)
Assists (Julia Ashley, North Carolina, Nov. 16, 2018) (Kristen Koop, Texas A&M, Sept. 13, 1996) (Sandy Smith, Nebraska, Sept. 22, 1995)	3
Shots (Courtney Saunders, Baylor, Oct. 2, 1998)	13
Shots on Goal (Maddie Pokorny, Saint Louis, Nov. 9, 2018) (Becky Nelson, Oklahoma, Oct. 24, 2003)	6 (two times)
Saves (Amanda Vandervort, Wyoming, Aug. 29, 1999)	16

Goals Allowed (In Victory) (vs. Duke, Sept. 10, 2006 [W, 4-3]) (at Oklahoma State, Sept. 30, 2001 [W, 5-3]) (vs. Colorado, Sept. 28, 1997 [W, 4-3])	3 (three times)
First Half Goals (vs. Loyola-Chicago, Aug. 25, 2019)	5
Second Half Goals (vs. Francis Marion, Oct. 19, 2008)	5
Margin of Victory (vs. Francis Marion, Oct. 19, 2008 [W, 7-0])	7
Margin of Defeat (at Nebraska, 10/15/1999 [1-8, L]), (at Nebraska, 9/22/1995 [1-8, L])	7 (twice)
Quickest Goal (Caroline Kastor, at Colorado, Oct. 25, 2010)	0:18
Quickest Goal Allowed (Whitney Palmer, Oklahoma, Oct. 10, 2010)	0:11
Quickest Goal (Second Half) (Shayna Teutsch, at UTEP, Oct. 6, 1996)	45:11
Quickest Goal Allowed (Second Half) (Elise Flake, BYU, Sept. 19, 2019)	45:33
Quickest Goal (Overtime) (Kim Boyer, vs. Missouri State, Sept. 18, 2007)	91:55
Quickest Goal Allowed (Overtime) (Kasey Langdon, Oklahoma St., Oct. 10, 2008)	92:03
Shortest Span Between Goals (Lindsey Horner, Carmel Kaplinger vs. Iowa State, Sept. 29, 2000)	0:15
Shortest Span Between Goals Allowed (Katie Baruth and Carol Ditch, Texas, Sept. 15, 1996)	0:14
Shortest Span Between Goals (Both Teams) (KayAnne Gummertsall, Duke and Holly Gault, Kansas, Sept. 10, 2006)	0:08
Attendance (Home) (vs. Kansas State, Oct. 6, 2017)	2,514
Attendance (Away) (at Saint Louis, Sept. 8, 2017)	5,205

SINGLE SEASON RECORDS

POINTS

No.	Player	Points
1.	Caroline Smith (2003) (19 goals, 3 assists)	41
2.	Caroline Smith (2004) (11 goals, 10 assists)	32
	Hilla Rantala (2001) (10 goals, 12 assists)	32
4.	Liana Salazar (2014) (13 goals, 4 assists)	30
5.	Whitney Berry (2011) (8 goals, 13 assists)	29
6.	Ingrid Vidal (2011) (11 goals, 6 assists)	28
	Monica Dolinsky (2008) (9 goals, 10 assists)	28
8.	Emily Cressy (2009) (12 goals, 3 assists)	27
	Caroline Smith (2002) (12 goals, 3 assists)	27
10.	Caroline Smith (2005) (9 goals, 8 assists)	26

GOALS

No.	Player	Goals
1.	Caroline Smith (2003)	19
2.	Liana Salazar (2014)	13
3.	Emily Cressy (2009)	12
	Caroline Smith (2002)	12
5.	Katie McClure (2018)	11
	Caroline Kastor (2012)	11
	Ingrid Vidal (2011)	11
	Caroline Smith (2004)	11
9.	Hilla Rantala (2001)	10
10.	Katie McClure (2019)	9
	Monica Dolinsky (2008)	9
	Shannon McCabe (2008)	9
	Caroline Smith (2005)	9
	Monica Brothers (2001)	9

GAME-WINNING GOALS

No.	Player	GWG
1.	Katie McClure (2018)	7
	Caroline Smith (2003)	7
3.	Katie McClure (2019)	5
	Caroline Kastor (2012)	5
	Emily Cressy (2009)	5
	Rachel Gilfillan (2004)	5
7.	Eight Times	4

ASSISTS

No.	Player	Assists
1.	Whitney Berry (2011)	13
2.	Hilla Rantala (2001)	12
3.	Monica Dolinsky (2009)	10
	Monica Dolinsky (2008)	10
	Caroline Smith (2004)	10
6.	Whitney Berry (2009)	9
7.	Caroline Smith (2005)	8
	Melanie Schroeder (2000)	8
	Meghann Haven (1999)	8
10.	Ali Kimura (2014)	7
	Whitney Berry (2012)	7
	Caroline Kastor (2011)	7
	Jessica Bush (2008)	7
	Holly Gault (2006)	7
	Lauren Williams (2004)	7

SHOTS

No.	Player	Shots
1.	Caroline Smith (2005)	98
2.	Caroline Smith (2004)	92
3.	Whitney Berry (2011)	85
	Caroline Smith (2003)	85
5.	Monica Dolinsky (2008)	79
6.	Emily Cressy (2009)	73
7.	Monica Dolinsky (2009)	71
8.	Denise Cooke (1995)	68
9.	Whitney Berry (2012)	66
10.	Whitney Berry (2010)	65

SHOTS ON GOAL

No.	Player	SOG
1.	Caroline Smith (2003)	46
2.	Caroline Smith (2004)	45
3.	Caroline Smith (2005)	43
4.	Emily Cressy (2009)	42
5.	Whitney Berry (2011)	41
6.	Monica Dolinsky (2008)	37
7.	Caroline Kastor (2012)	32
	Caroline Smith (2002)	32
9.	Whitney Berry (2012)	30
	Hilla Rantala (2001)	30

* - Individual shots on goal kept since 1999

MINUTES PLAYED (FIELD)

No.	Player	Minutes
1.	Estelle Johnson (2008)	2,110
2.	Shelby Williamson (2009)	2,012
3.	Estelle Johnson (2009)	1,987
4.	Kayla Morrison (2016)	1,985
5.	Afton Sauer (2004)	1,981
6.	Kayla Morrison (2015)	1,977
7.	Morgan Williams (2015)	1,963
8.	Geneva Magness (2009)	1,958
9.	Lauren Jackson (2009)	1,916
10.	Afton Sauer (2007)	1,911

* - Individual minutes kept since 2004

MINUTES PLAYED (KEEPERS)

No.	Player	Minutes
1.	Meghan Miller (2003)	2,281
2.	Maddie Dobyns (2015)	2,074
3.	Meghan Miller (2004)	2,060
4.	Sarah Peters (2018)	1,989
5.	Colleen Quinn (2007)	1,952

SAVES

No.	Player	Saves
1.	Jen Fecke (1996)	150
2.	Jen Fecke (1997)	147
3.	Betsy Pollard (1999)	125
4.	Kat Liebetrau (2010)	113
5.	Meghan Miller (2003)	111

GOALS AGAINST AVG. (MINIMUM 1,000 MIN.)

No.	Player	GAA
1.	Meghan Miller (2004) (13 GA, 2,061 min.)	0.57
2.	Kaitlyn Stroud (2014) (14 GA, 1,722 min.)	0.73
3.	Meghan Miller (2003) (19 GA, 2,281 min.)	0.75
4.	Maddie Dobyns (2016) (14 GA, 1,554 min.)	0.81
5.	Sarah Peters (2019) (12 GA, 1,378 min.)	0.85
6.	Julie Hanley (2006) (19 GA, 1,738 min.)	0.98

SAVE PERCENTAGE (MINIMUM 1,000 MIN.)

No.	Player	Save Pct.
1.	Meghan Miller (2004) (13 GA, 96 saves)	.881
2.	Meghan Miller (2003) (19 GA, 111 saves)	.854
3.	Kaitlyn Stroud (2014) (14 GA, 77 saves)	.846
4.	Betsy Pollard (1999) (29 GA, 125 saves)	.812
5.	Kaitlyn Stroud (2013) (25 GA, 107 saves)	.811

SHUTOUTS

No.	Player	Shutouts
1.	Meghan Miller (2004)	11
2.	Meghan Miller (2003)	10
3.	Sarah Peters (2018)	9
4.	Kaitlyn Stroud (2014)	8
5.	Julie Hanley (2006)	7
6.	Sarah Peters (2019)	6
	Maddie Dobyns (2015)	6

WINS

No.	Player	Wins
1.	Meghan Miller (2004)	18
	Meghan Miller (2003)	18
3.	Kaitlyn Stroud (2014)	14
4.	Julie Hanley (2008)	13
	Meghan Miller (2001)	13
6.	Sarah Peters (2018)	12
7.	Julie Hanley (2006)	11

CAREER RECORDS

POINTS

No.	Player	Pts.
1. . . .	Caroline Smith (2002-05)	126
2. . . .	Whitney Berry (2009-12)	78
3. . . .	Monica Dolinsky (2006-09)	76
4. . . .	Katie McClure (2016-Present)	75
	(31 goals, 13 assists)	
5. . . .	Liana Salazar (2011-15)	68
	Rachel Gilfillan (2001-04)	68
	(26 goals, 16 assists)	
7. . . .	Grace Hagan (2015-18)	67
	(25 goals, 17 assists)	
8. . . .	Caroline Kastor (2010-13)	66
	(26 goals, 14 assists)	
9. . . .	Ashley Williams (2012-15)	52
	(21 goals, 10 assists)	
	Emily Cressy (2008-10)	52
	(23 goals, 6 assists)	

GOALS

No.	Player	Goals
1. . . .	Caroline Smith (2002-05)	51
2. . . .	Katie McClure (2016-Present)	31
3. . . .	Liana Salazar (2011-15)	28
4. . . .	Caroline Kastor (2010-13)	26
	Rachel Gilfillan (2001-04)	26
6. . . .	Grace Hagan (2015-18)	25
7. . . .	Whitney Berry (2009-12)	23
	Emily Cressy (2008-10)	23
	Monica Dolinsky (2006-09)	23
10. . . .	Ashley Williams (2012-15)	21

GAME-WINNING GOALS

No.	Player	GWG
1. . . .	Katie McClure (2016-Present)	16
2. . . .	Caroline Smith (2002-05)	14
3. . . .	Emily Cressy (2008-10)	11
4. . . .	Ashley Williams (2012-15)	10
	Rachel Gilfillan (2001-04)	10
6. . . .	Monica Brothers (2001-04)	8
7. . . .	Liana Salazar (2011-15)	7
	Caroline Kastor (2010-13)	7
	Monica Dolinsky (2006-09)	7
	Jessica Bush (2005-08)	7
11. . . .	Jamie Fletcher (2011-14)	6
	Shannon McCabe (2006-09)	6

ASSISTS

No.	Player	Assists
1. . . .	Whitney Berry (2009-12)	32
2. . . .	Monica Dolinsky (2006-09)	30
3. . . .	Caroline Smith (2002-05)	24
4. . . .	Jessica Bush (2005-08)	21
5. . . .	Holly Gault (2003-06)	19
	Hilla Rantala (1999-2001)	19
7. . . .	Grace Hagan (2015-18)	17
	Amy Geha (2001-04)	17
	Melanie Schroeder (1998-2001)	17
10. . . .	Rachel Gilfillan (2001-04)	16

SHOTS

No.	Player	Shots
1. . . .	Caroline Smith (2002-05)	333
2. . . .	Whitney Berry (2009-12)	267
3. . . .	Monica Dolinsky (2006-09)	226
4. . . .	Katie McClure (2016-Present)	213
5. . . .	Jamie Fletcher (2011-14)	206
6. . . .	Liana Salazar (2011-15)	194
7. . . .	Grace Hagan (2015-Present)	179
8. . . .	Rachel Gilfillan (2001-04)	175
9. . . .	Caroline Kastor (2010-13)	159
10. . . .	Ashley Williams (2012-15)	154

SHOTS ON GOAL

No.	Player	SOG
1. . . .	Caroline Smith (2002-05)	166
2. . . .	Whitney Berry (2009-12)	113
3. . . .	Katie McClure (2016-Present)	98
4. . . .	Monica Dolinsky (2006-09)	96
5. . . .	Rachel Gilfillan (2001-04)	92
6. . . .	Liana Salazar (2011-15)	86
7. . . .	Grace Hagan (2015-18)	82
8. . . .	Jamie Fletcher (2011-14)	79
9. . . .	Emily Cressy (2008-10)	78
10. . . .	Caroline Kastor (2010-13)	77

GAMES PLAYED (FIELD)

No.	Player	Games
1. . . .	Amy Geha (2001-04)	88
2. . . .	Rachel Gilfillan (2001-04)	87
	Lauren Williams (2001-04)	87
4. . . .	Estelle Johnson (2006-09)	85
	Holly Gault (2003-06)	85
	Monica Brothers (2001-04)	85
7. . . .	Lacey Novak (2003-06)	84
	Stacy Leeper (2001-04)	84
9. . . .	Grace Hagan (2015-18)	83
	Kayla Morrison (2014-17)	83
	Liana Salazar (2011-15)	83
	Kim Boyer (2006-09)	83
	Monica Dolinsky (2006-09)	83
	Jessica Bush (2005-08)	83
	Afton Sauer (2004-07)	83
	Jessica Smith (2002-05)	83

GAMES STARTED (FIELD)

No.	Player	Games
1. . . .	Kayla Morrison (2014-17)	83
	Estelle Johnson (2006-09)	83
	Afton Sauer (2004-07)	83
4. . . .	Liana Salazar (2011-15)	82
	Whitney Berry (2009-12)	82
	Shelby Williamson (2009-12)	82
	Jessica Bush (2005-08)	82
	Holly Gault (2003-06)	82
9. . . .	Grace Hagan (2015-18)	80
	Taylor Estrada (2013-16)	80
11. . . .	Caroline Smith (2002-05)	79
12. . . .	Jamie Fletcher (2011-14)	76

MINUTES PLAYED (FIELD)*

No.	Player	Minutes
1. . . .	Estelle Johnson (2006-09)	7,470
2. . . .	Afton Sauer (2004-07)	7,459
3. . . .	Kayla Morrison (2014-17)	7,368
4. . . .	Shelby Williamson (2009-12)	7,232
5. . . .	Liana Salazar (2011-15)	6,933
6. . . .	Whitney Berry (2009-12)	6,739
7. . . .	Addisyn Merrick (2016-Present)	6,672
8. . . .	Taylor Estrada (2013-16)	6,578
9. . . .	Grace Hagan (2015-18)	6,454
10. . . .	Missy Geha (2005-08)	6,416

* Minutes played became an official stat in 2004

GAMES PLAYED (KEEPERS)

No.	Player	Games
1. . . .	Meghan Miller (2001-04)	88
2. . . .	Julie Hanley (2005-09)	65
3. . . .	Kaitlyn Stroud (2010-14)	63
4. . . .	Maddie Dobyns (2014-Present)	60
5. . . .	Kat Liebetrau (2009-12)	54

SAVES

No.	Player	Saves
1. . . .	Jen Fecke (1996-98)	375
2. . . .	Meghan Miller (2001-04)	362
3. . . .	Kaitlyn Stroud (2010-2014)	281
4. . . .	Kat Liebetrau (2009-12)	228
	Julie Hanley (2005-09)	228

GOALS AGAINST AVG. (MIN. 2,500 MIN.)

No.	Player	GAA
1. . . .	Sarah Peters (2018-Present)	0.95
	(35 GA, 3,321 min.)	
2. . . .	Meghan Miller (2001-04)	0.98
	(85 GA, 7,836 min.)	
3. . . .	Maddie Dobyns (2014-17)	1.06
	(64 GA, 5,427 min.)	
4. . . .	Kaitlyn Stroud (2010-14)	1.21
	(75 GA, 5,582 min.)	
5. . . .	Julie Hanley (2005-09)	1.32
	(81 GA, 5,515 min.)	

SAVE PERCENTAGE (MIN. 100 SHOTS FACED)

No.	Player	Save Pct.
1. . . .	Betsy Pollard (1996-99)814
	(29 GA, 127 saves)	
2. . . .	Meghan Miller (2001-04)810
	(85 GA, 362 saves)	
3. . . .	Kaitlyn Stroud (2010-14)789
	(75 GA, 281 saves)	
4. . . .	Colleen Quinn (2004-07)781
	(44 GA, 157 saves)	
5. . . .	Jen Fecke (1996-98)773
	(110 GA, 375 saves)	

SHUTOUTS

No.	Player	Shutouts
1. . . .	Meghan Miller (2001-04)	28
2. . . .	Julie Hanley (2005-09)	16
3. . . .	Sarah Peters (2018-Present)	15
4. . . .	Maddie Dobyns (2014-17)	14
5. . . .	Kaitlyn Stroud (2010-14)	13
6. . . .	Kat Liebetrau (2009-12)	12

WINS

No.	Player	Wins
1. . . .	Meghan Miller (2001-04)	60
2. . . .	Julie Hanley (2005-09)	36
3. . . .	Kaitlyn Stroud (2010-14)	32
4. . . .	Maddie Dobyns (2014-17)	29
5. . . .	Kat Liebetrau (2009-12)	23

CAREER STATISTICS

Amos, Bri											
Season	GP-GS	Min.	G	A	Pts	Shot	Shot%	SOG	SOG%	GW	PK-Att
2018	10-1	228	0	1	1	3	.000	0	.000	0	0-0
2019	15-5	539	1	3	5	9	.111	5	.556	0	0-0
TOTAL	25-6	767	1	4	6	12	.083	5	.417	0	0-0

Barnett, Samantha											
Season	GP-GS	Min.	G	A	Pts	Shot	Shot%	SOG	SOG%	GW	PK-Att
2018	20-0	281	0	0	0	4	.000	1	.250	0	0-0
2019	15-0	499	1	1	3	12	.083	6	.500	0	0-0
TOTAL	35-0	780	1	1	3	16	.062	7	.438	0	0-0

Beyer, Lia											
Season	GP-GS	Min.	G	A	Pts	Shot	Shot%	SOG	SOG%	GW	PK-Att
2019	3-0	63	0	0	0	0	.000	0	.000	0	0-0
TOTAL	3-0	63	0	0	0	0	.000	0	.000	0	0-0

Bradley, Italia											
Season	GP-GS	Min.	G	A	Pts	Shot	Shot%	SOG	SOG%	GW	PK-Att
2018	13-0	170	0	0	0	0	.000	0	.000	0	0-0
2019	13-2	403	0	0	0	1	.000	0	.000	0	0-0
TOTAL	26-2	573	0	0	0	1	.000	0	.000	0	0-0

Briley, Gracely											
Season	GP-GS	Min.	G	A	Pts	Shot	Shot%	SOG	SOG%	GW	PK-Att
2019	6-0	122	0	0	0	6	.000	1	.167	0	0-0
TOTAL	6-0	122	0	0	0	6	.000	1	.167	0	0-0

Castro, Kathryn											
Season	GP-GS	Min.	G	A	Pts	Shot	Shot%	SOG	SOG%	GW	PK-Att
2017	18-4	550	0	0	0	7	.000	3	.429	0	0-0
2018	21-5	779	0	0	0	9	.000	2	.222	0	0-0
2019	15-6	542	1	0	2	15	.067	7	.467	0	0-0
TOTAL	54-15	1871	1	0	2	31	.032	12	.387	0	0-0

Cavalcante, Isabella											
Season	GP-GS	Min.	G	A	Pts	Shot	Shot%	SOG	SOG%	GW	PK-Att
2017	20-20	1663	1	1	3	10	.100	4	.400	1	0-0
2018	15-11	1006	0	1	1	4	.000	1	.250	0	0-0
2019	15-15	1172	0	2	2	11	.000	3	.273	0	0-0
TOTAL	50-46	3841	1	4	6	25	.040	8	.320	1	0-0

Costow, Ebba											
Season	GP-GS	Min.	G	A	Pts	Shot	Shot%	SOG	SOG%	GW	PK-Att
2019	15-9	630	1	2	4	2	.500	1	.500	0	0-0
TOTAL	15-9	630	1	2	4	2	.500	1	.500	0	0-0

Duggan, Mandi											
Season	GP-GS	Min.	G	A	Pts	Shot	Shot%	SOG	SOG%	GW	PK-Att
2016	20-4	504	3	0	6	10	.300	3	.300	3	0-0
2018	6-0	99	0	0	0	1	.000	0	.000	0	0-0
2019	15-2	540	4	0	8	15	.267	10	.667	1	0-0
TOTAL	41-6	1143	7	0	14	26	.269	13	.500	4	0-0

Eliasdottir, Eva											
Season	GP-GS	Min.	G	A	Pts	Shot	Shot%	SOG	SOG%	GW	PK-Att
2016	16-0	297	0	1	1	3	.000	2	.667	0	0-0
2017	20-20	1640	1	1	3	5	.200	1	.200	0	0-0
2018	15-11	754	1	2	4	5	.200	1	.200	1	0-0
2019	8-0	229	0	0	0	5	.000	1	.200	0	0-0
TOTAL	59-31	2920	2	4	8	18	.111	5	.278	1	0-0

Gavillet, Emilie											
Season	GP-GS	Min.	G	A	Pts	Shot	Shot%	SOG	SOG%	GW	PK-Att
2019	1-0	10	0	0	0	0	.000	0	.000	0	0-0
TOTAL	1-0	10	0	0	0	0	.000	0	.000	0	0-0

Season	GP-GS	Minutes	GA	GAAvg	Saves	Save%	W	L	T	Sho
2019	1-0	9:31	0	0.00	0	.000	0	0	0	0.1
TOTAL	1-0	9:31	0	0.00	0	.000	0	0	0	0.1

Giubilato, Margherit											
Season	GP-GS	Min.	G	A	Pts	Shot	Shot%	SOG	SOG%	GW	PK-Att
2019	3-0	38	0	0	0	0	.000	0	.000	0	0-0
TOTAL	3-0	38	0	0	0	0	.000	0	.000	0	0-0

Hall, Avery											
Season	GP-GS	Min.	G	A	Pts	Shot	Shot%	SOG	SOG%	GW	PK-Att
2017	1-0	13	0	0	0	0	.000	0	.000	0	0-0
2018	3-0	45	0	0	0	0	.000	0	.000	0	0-0
2019	7-0	89	0	0	0	3	.000	2	.667	0	0-0
TOTAL	11-0	147	0	0	0	3	.000	2	.667	0	0-0

Hansen, Kaela											
Season	GP-GS	Min.	G	A	Pts	Shot	Shot%	SOG	SOG%	GW	PK-Att
2018	21-21	1650	0	0	0	6	.000	1	.167	0	0-0
2019	15-15	1125	0	0	0	3	.000	0	.000	0	0-0
TOTAL	36-36	2775	0	0	0	9	.000	1	.111	0	0-0

Holland, Ceri											
Season	GP-GS	Min.	G	A	Pts	Shot	Shot%	SOG	SOG%	GW	PK-Att
2017	20-20	1564	1	1	3	34	.029	14	.412	0	0-0
2018	21-21	1690	1	4	6	38	.026	11	.289	1	0-1
2019	15-15	1125	4	3	11	39	.103	16	.410	0	2-2
TOTAL	56-56	4379	6	8	20	111	.054	41	.369	1	2-3

Lane, Kailey											
Season	GP-GS	Min.	G	A	Pts	Shot	Shot%	SOG	SOG%	GW	PK-Att
2018	4-0	30	0	0	0	0	.000	0	.000	0	0-0
2019	15-8	677	4	1	9	13	.308	7	.538	3	0-0
TOTAL	19-8	707	4	1	9	13	.308	7	.538	3	0-0

Maierhofer, Sophie											
Season	GP-GS	Min.	G	A	Pts	Shot	Shot%	SOG	SOG%	GW	PK-Att
2016	12-9	714	1	0	2	3	.333	2	.667	0	0-0
2017	18-16	1159	4	1	9	25	.160	12	.480	1	0-0
2018	6-1	123	0	0	0	2	.000	0	.000	0	0-0
2019	15-15	1180	2	0	4	13	.154	4	.308	0	0-0
TOTAL	51-41	3176	7	1	15	43	.163	18	.419	1	0-0

McClure, Katie											
Season	GP-GS	Min.	G	A	Pts	Shot	Shot%	SOG	SOG%	GW	PK-Att
2016	21-16	1405	5	2	12	54	.093	28	.519	3	0-0
2017	20-20	1412	6	2	14	52	.115	25	.481	1	0-0
2018	21-21	1462	11	3	25	58	.190	26	.448	7	0-0
2019	15-15	983	9	6	24	49	.184	19	.388	5	0-0
TOTAL	77-72	5262	31	13	75	213	.146	98	.460	16	0-0

Meador, Madison											
Season	GP-GS	Min.	G	A	Pts	Shot	Shot%	SOG	SOG%	GW	PK-Att
2017	18-3	726	0	2	2	3	.000	1	.333	0	0-0
2018	20-20	1793	1	0	2	9	.111	2	.222	1	0-0
2019	13-8	660	0	0	0	2	.000	0	.000	0	0-0
TOTAL	51-31	3179	1	2	4	14	.071	3	.214	1	0-0

Merrick, Addisyn											
Season	GP-GS	Min.	G	A	Pts	Shot	Shot%	SOG	SOG%	GW	PK-Att
2016	21-14	1630	1	0	2	11	.091	5	.455	0	0-0
2017	20-20	1867	0	0	0	1	.000	1	1.000	0	0-0
2018	21-19	1855	0	0	0	4	.000	2	.500	0	0-0
2019	15-15	1320	0	1	1	2	.000	0	.000	0	0-0
TOTAL	77-68	6672	1	1	3	18	.056	8	.444	0	0-0

Pasar, Melania											
Season	GP-GS	Min.	G	A	Pts	Shot	Shot%	SOG	SOG%	GW	PK-Att
2019	2-0	37	0	0	0	0	.000	0	.000	0	0-0
TOTAL	2-0	37	0	0	0	0	.000	0	.000	0	0-0

Season	GP-GS	Minutes	GA	GAAvg	Saves	Save%	W	L	T	Sho
2019	2-0	36:46	1	2.45	0	.000	0	0	0	0.1
TOTAL	2-0	36:46	1	2.45	0	.000	0	0	0	0.1

Peters, Sarah											
Season	GP-GS	Min.	G	A	Pts	Shot	Shot%	SOG	SOG%	GW	PK-Att
2018	21-0	1989	0	0	0	0	.000	0	.000	0	0-0
2019	15-0	1331	0	0	0	0	.000	0	.000	0	0-0
TOTAL	36-0	3320	0	0	0	0	.000	0	.000	0	0-0

TV/RADIO ROSTER



0 **GABBIE DAWE**
Fr. / GK / 5-10
Memphis, Tenn.



00 **SARAH PETERS**
So. / GK / 5-10
Lee's Summit, Mo.



1 **MELANIA PASAR**
Fr. / GK / 5-11
Potoroz, Slovenia



2 **ELLIE PRYBYLSKI**
Fr. / D / F / 5-5
Forsyth County, Ga.



3 **MYA SHERIDAN**
Fr. / F / 5-5
Schertz, Texas



4 **KAILEY LANE**
So. / F / 5-9
Omaha, Neb.



6 **KAELA HANSEN**
So. / D / 5-7
Burnaby, British Columbia



7 **AVERY HALL**
Jr. / M / 5-5
McKinney, Texas



8 **EBBA COSTOW**
Fr. / M / 5-5
Uppsala, Sweden



9 **MADISON MEADOR**
Sr. / D / 5-7
Ballwin, Mo.



10 **GRACELEY BRILEY**
Fr. / M / 5-9
Olathe, Kan.



11 **CHAIS WRIGHT**
RS-Fr. / D / 5-4
Kansas City, Mo.



12 **KATIE MCCLURE**
Fr. / F / 5-4
Wichita, Kan.



13 **KATHRYN CASTRO**
Jr. / M / 5-3
Plano, Texas



14 **SAMANTHA BARNETT**
So. / M / 5-8
Edmond, Okla.



15 **CERI HOLLAND**
Jr. / M / 5-6
West Yorkshire, England



16 **ITALIA BRADLEY**
So. / D / 5-7
Coppell, Texas



17 **LIA BEYER**
Fr. / D / 5-7
Parker, Colo.



18 **EMILIE GAVILLET**
RS-Fr. / GK / 5-9
Montreux, Switzerland



19 **EVA ELÍASDÓTTIR**
Sr. / F / 5-6
Thorlakhshofn, Iceland



20 **MARGHERITA GIUBILATO**
Fr. / F / M / 5-4
Martellago, Italy



21 **ISABELLA CAVALCANTE**
Jr. / D / 5-7
Glen Ellyn, Ill.



22 **MANDI DUGGAN**
Jr. / F / 5-2
Aurora, Colo.



23 **GRACE WILTGEN**
Fr. / D / 5-6
Denton, Texas



24 **ELISE REINA**
Fr. / D / 5-2
Fayetteville, Ark.



26 **ADDISYN MERRICK**
Sr. / D / 5-5
Lee's Summit, Mo.



27 **SOPHIE MAIERHOFER**
Sr. / M / 5-7



28 **BRI AMOS**
So. / M / 5-7
Tulsa, Okla.



MARK FRANCIS
Head Coach
21st Season