



**Kansas at BYU**

11/27/19 Lahaina Civic Center, Lahaina  
2019-20 Men's Basketball

Game Time: 3:30 AM  
Game Duration: 1:47  
Attendance: 2,400

Officials: Terry Wymer, Chris Rastatter, Keith Kimble

**Kansas - 71**

**Record: 5-1**

NO.	Name	F	Min	FG			3P			FT			Rebounds			Fouls		TP	AS	TO	ST	Blocks		+/-
				M-A	M-A	M-A	OR	DR	TOT	PF	FD	BS	BA											
33	David McCormack	F	19:51	7-9	0-0	2-2	1	4	5	0	2	16	1	1	1	0	0	0	0	0	4			
35	Udoka Azubuike	C	26:26	5-6	0-0	1-5	3	7	10	1	4	11	1	2	1	0	0	0	18					
00	Marcus Garrett	G	25:14	3-5	1-3	0-0	0	6	6	3	0	7	3	2	2	0	0	14						
1	Devon Dotson	G	37:25	5-16	0-3	3-3	1	1	2	1	5	13	8	2	2	0	0	19						
30	Ochai Agbaji	G	30:49	6-9	2-4	0-0	1	4	5	0	2	14	3	2	1	0	1	14						
4	Isaiah Moss		29:42	2-8	1-5	0-1	1	2	3	2	2	5	1	1	2	0	0	19						
13	Tristan Enaruna		16:20	0-3	0-1	3-4	1	0	1	0	2	3	1	1	1	1	0	-1						
2	Christian Braun		08:20	1-3	0-2	0-0	0	0	0	1	0	2	0	1	0	0	0	-2						
22	Silvio DeSousa		03:34	0-2	0-0	0-0	1	1	2	1	0	0	0	0	0	0	0	-4						
20	Michael Jankovich		01:15	0-0	0-0	0-0	0	0	0	1	0	0	0	0	0	0	0	0						
5	Elijah Elliott		00:32	0-0	0-0	0-0	0	0	0	0	0	0	0	0	0	0	0	-3						
12	Chris Teahan		00:32	0-0	0-0	0-0	0	0	0	0	0	0	0	0	0	0	0	-3						
Team												0	1	1			0							
<b>Totals</b>				29-61	4-18	9-15	9	26	35	10	17	71	18	12	9	1	1	15						

Shooting By Period		
1st FG%	12-29	41.4%
3PT%	2-9	22.2%
FT%	3-3	100%
2nd FG%	17-32	53.1%
3PT%	2-9	22.2%
FT%	6-12	50%
GM FG%	29-61	47.5%
3PT%	4-18	22.2%
FT%	9-15	60.0%

Dead Ball Rebounds: 2, 0

Technical Fouls::NONE

**BYU - 56**

**Record: 4-3**

NO.	Name	F	Min	FG			3P			FT			Rebounds			Fouls		TP	AS	TO	ST	Blocks		+/-
				M-A	M-A	M-A	OR	DR	TOT	PF	FD	BS	BA											
33	Dalton Nixon	F	25:46	2-8	1-5	0-0	1	3	4	3	2	5	2	5	3	0	0	-9						
40	Kolby Lee	F	27:03	6-8	1-2	0-0	2	1	3	4	0	13	1	2	0	0	0	-9						
4	Alex Barcello	G	24:36	2-5	1-4	0-0	0	3	3	2	0	5	1	1	1	0	0	-11						
5	Jake Toolson	G	33:20	3-9	1-5	0-0	0	7	7	1	0	7	2	2	0	0	0	-17						
30	TJ Haws	G	34:02	6-14	3-9	1-1	1	2	3	1	4	16	5	4	1	0	1	-11						
2	Zac Seljaas		22:21	0-4	0-4	2-3	0	1	1	0	1	2	2	0	0	0	0	-14						
44	Connor Harding		22:59	2-4	1-2	0-0	1	6	7	3	1	5	0	3	0	0	0	-13						
13	Taylor Maughan		03:42	0-0	0-0	0-0	0	2	2	1	1	0	0	1	0	0	0	3						
21	Trevin Knell		02:43	0-1	0-1	0-0	0	1	1	2	0	0	0	0	0	1	0	-2						
3	Blaze Nield		02:24	0-0	0-0	0-0	0	0	0	0	1	0	1	0	0	0	0	2						
15	Cameron Pearson		00:32	0-0	0-0	0-0	0	0	0	0	0	0	0	0	0	0	0	3						
24	Evan Troy		00:32	1-1	1-1	0-0	0	0	0	0	0	3	0	0	0	0	0	3						
Team												0	1	1			0			2				
<b>Totals</b>				22-54	9-33	3-4	5	27	32	17	10	56	14	20	5	1	1	-15						

Shooting By Period		
1st FG%	10-26	38.5%
3PT%	5-17	29.4%
FT%	2-3	66.7%
2nd FG%	12-28	42.9%
3PT%	4-16	25.0%
FT%	1-1	100%
GM FG%	22-54	40.7%
3PT%	9-33	27.3%
FT%	3-4	75.0%

Dead Ball Rebounds: 2, 0

Technical Fouls::NONE

	KU	BYU
Biggest lead	20 (2 <sup>nd</sup> 3:04)	2 (1 <sup>st</sup> 15:46)
Best Scoring Run	10(2 <sup>nd</sup> 7:31)	5(1 <sup>st</sup> 9:52)
Lead Changes	10	
Times Tied	3	
Time with Lead	30:43	08:03

Points from	KU	BYU
Turnovers	17	4
Paint	42	18
Second Chance	7	7
Fast Breaks	13	5
Bench	10	10

	Period by Period Scoring		
	1st	2nd	TOT
KU	29	42	71
BYU	27	29	56



**Kansas at BYU**

11/27/19 Lahaina Civic Center, Lahaina  
2019-20 Men's Basketball

**Game Time:** 3:30 AM  
**Game Duration:** 1:47  
**Attendance:** 2,400

**Officials:** Terry Wymer, Chris Rastatter, Keith Kimble

**Period 1**

**Quarter Starters:**

<b>BYU</b>	4 Barcello A	5 Toolson J	30 Haws T	33 Nixon D	40 Lee K
<b>KU</b>	00 Garrett M	1 Dotson D	30 Agbaji O	33 McCormack D	35 Azubuike U

Game Time	BYU	Score	Diff	KU
20:00	40 LEE K jumpball lost			35 AZUBUIKE U jumpball won
19:35		<b>0-2</b>	<b>-2</b>	33 MCCORMACK D 2pt FG outside the paint, jump shot made (2)
19:35				1 DOTSON D assist (1)
19:18	5 TOOLSON J 3pt FG , jump shot made (3)	<b>3-2</b>	<b>1</b>	
19:18	40 LEE K assist (1)			
18:53		<b>3-4</b>	<b>-1</b>	1 DOTSON D 2pt FG outside the paint, jump shot made (2)
18:47	4 BARCELLO A 2pt FG fast break outside the paint, jump shot made (2)	<b>5-4</b>	<b>1</b>	
18:47	30 HAWS T assist (1)			
18:31	33 NIXON D steal (1)			00 GARRETT M turnover bad pass (1)
18:23	33 NIXON D 3pt FG , jump shot missed			
18:20				00 GARRETT M defensive rebound (1)
18:17	4 BARCELLO A foul personal (1 - 1)			1 DOTSON D foul drawn (1)
18:12				1 DOTSON D 3pt FG , jump shot missed
18:08	5 TOOLSON J defensive rebound (1)			
18:01	30 HAWS T turnover lost ball (1)			
17:39				33 MCCORMACK D 2pt FG outside the paint, jump shot missed
17:34	5 TOOLSON J defensive rebound (2)			
17:25	30 HAWS T 3pt FG , jump shot missed			
17:22				35 AZUBUIKE U defensive rebound (1)
17:10				35 AZUBUIKE U 2pt FG in the paint, layup missed
17:07	30 HAWS T defensive rebound (1)			
16:55	33 NIXON D 3pt FG , jump shot missed			
16:51				1 DOTSON D defensive rebound (1)
16:42		<b>5-6</b>	<b>-1</b>	33 MCCORMACK D 2pt FG in the paint, layup made (4)
16:42				30 AGBAJI O assist (1)
16:18	30 HAWS T 2pt FG outside the paint, made (2)	<b>7-6</b>	<b>1</b>	
16:03		<b>7-8</b>	<b>-1</b>	35 AZUBUIKE U 2pt FG in the paint, alleyoop made (2)
16:03				1 DOTSON D assist (2)
15:46	4 BARCELLO A 3pt FG , jump shot made (5)	<b>10-8</b>	<b>2</b>	
15:46	5 TOOLSON J assist (1)			
15:27	33 NIXON D steal (2)			35 AZUBUIKE U turnover bad pass (1)
15:21	30 HAWS T foul drawn (1)			00 GARRETT M foul personal (1 - 1)
15:21	Timeout media			
15:14	40 LEE K foul offensive (1 - 2)			30 AGBAJI O foul drawn (1)
15:14	40 LEE K turnover offensive (1)			
15:14	40 LEE K substitution out			
15:14	2 SELJAAS Z substitution in			
14:47				1 DOTSON D 2pt FG outside the paint, jump shot missed
14:45	5 TOOLSON J defensive rebound (3)			
14:45				33 MCCORMACK D substitution out
14:45				4 MOSS I substitution in
14:31	2 SELJAAS Z 3pt FG , jump shot missed			



**Kansas at BYU**

11/27/19 Lahaina Civic Center, Lahaina  
2019-20 Men's Basketball

**Game Time:** 3:30 AM  
**Game Duration:** 1:47  
**Attendance:** 2,400

**Officials:** Terry Wymer, Chris Rastatter, Keith Kimble

Game Time	BYU	Score	Diff	KU
14:26				00 GARRETT M defensive rebound (2)
14:22		<b>10-10</b>	<b>0</b>	30 AGBAJI O 2pt FG fast break in the paint, made (2)
14:01	33 NIXON D 3pt FG , jump shot missed			
13:57				30 AGBAJI O defensive rebound (1)
13:50		<b>10-12</b>	<b>-2</b>	1 DOTSON D 2pt FG fast break in the paint, made (4)
13:50				30 AGBAJI O assist (2)
13:50	33 NIXON D foul shooting (1 - 3)			1 DOTSON D foul drawn (2)
13:50		<b>10-13</b>	<b>-3</b>	1 DOTSON D free throw fast break 1 - 1 made (5)
13:50				00 GARRETT M substitution out
13:50				13 ENARUNA T substitution in
13:31	5 TOOLSON J 2pt FG outside the paint, missed			
13:28				4 MOSS I defensive rebound (1)
13:24				30 AGBAJI O 3pt FG , jump shot missed
13:20	5 TOOLSON J defensive rebound (4)			
13:00	33 NIXON D 2pt FG in the paint, layup made (2)	<b>12-13</b>	<b>-1</b>	
13:00	30 HAWS T assist (2)			
12:52				1 DOTSON D 2pt FG in the paint, missed
12:48	33 NIXON D defensive rebound (1)			
12:44	33 NIXON D turnover travel (1)			
12:44	4 BARCELLO A substitution out			
12:44	33 NIXON D substitution out			
12:44	40 LEE K substitution in			
12:44	44 HARDING C substitution in			
12:44				30 AGBAJI O substitution out
12:44				35 AZUBUIKE U substitution out
12:44				00 GARRETT M substitution in
12:44				33 MCCORMACK D substitution in
12:32		<b>12-16</b>	<b>-4</b>	4 MOSS I 3pt FG , jump shot made (3)
12:32				00 GARRETT M assist (1)
12:04	5 TOOLSON J 2pt FG in the paint, made (5)	<b>14-16</b>	<b>-2</b>	
11:42		<b>14-18</b>	<b>-4</b>	33 MCCORMACK D 2pt FG in the paint, layup made (6)
11:42				13 ENARUNA T assist (1)
11:35	30 HAWS T 3pt FG fast break, made (5)	<b>17-18</b>	<b>-1</b>	
11:17				13 ENARUNA T 3pt FG , jump shot missed
11:14	44 HARDING C defensive rebound (1)			
10:54	30 HAWS T 2pt FG in the paint, jump shot blocked			
10:54				13 ENARUNA T block (1)
10:48				33 MCCORMACK D defensive rebound (1)
10:47				4 MOSS I 3pt FG , jump shot missed
10:43	5 TOOLSON J defensive rebound (5)			
10:32	5 TOOLSON J 3pt FG , missed			
10:29				00 GARRETT M defensive rebound (3)
10:23				00 GARRETT M 3pt FG , jump shot missed
10:19				4 MOSS I offensive rebound (2)
10:15				33 MCCORMACK D 2pt FG outside the paint, missed
10:10	2 SELJAAS Z defensive rebound (1)			
09:52	2 SELJAAS Z foul drawn (1)			4 MOSS I foul shooting (1 - 2)
09:52	Timeout media			
09:52	5 TOOLSON J substitution out			



**Kansas at BYU**

11/27/19 Lahaina Civic Center, Lahaina  
2019-20 Men's Basketball

**Game Time:** 3:30 AM  
**Game Duration:** 1:47  
**Attendance:** 2,400

**Officials:** Terry Wymer, Chris Rastatter, Keith Kimble

Game Time	BYU	Score	Diff	KU
09:52	40 LEE K substitution out			
09:52	4 BARCELLO A substitution in			
09:52	33 NIXON D substitution in			
09:52				1 DOTSON D substitution out
09:52				33 MCCORMACK D substitution out
09:52				2 BRAUN C substitution in
09:52				22 DESOUSA S substitution in
09:52	2 SELJAAS Z free throw 1 - 3 missed			
09:52	offensive dead ball rebound (1)			
09:52	2 SELJAAS Z free throw 2 - 3 made (1)	<b>18-18</b>	<b>0</b>	
09:52	2 SELJAAS Z free throw 3 - 3 made (2)	<b>19-18</b>	<b>1</b>	
09:42				13 ENARUNA T 2pt FG in the paint, layup missed
09:37				22 DESOUSA S offensive rebound (1)
09:37				22 DESOUSA S 2pt FG in the paint, jump shot missed
09:34	33 NIXON D defensive rebound (2)			
09:10	33 NIXON D foul drawn (1)			4 MOSS I foul personal (2 - 3)
09:10				4 MOSS I substitution out
09:10				13 ENARUNA T substitution out
09:10				1 DOTSON D substitution in
09:10				30 AGBAJI O substitution in
09:09	33 NIXON D turnover travel (2)			
08:42	30 HAWS T foul drawn (2)			00 GARRETT M foul offensive (2 - 4)
08:42				00 GARRETT M turnover offensive (2)
08:42				00 GARRETT M substitution out
08:42				22 DESOUSA S substitution out
08:42				4 MOSS I substitution in
08:42				35 AZUBUIKE U substitution in
08:19	30 HAWS T foul drawn (3)			1 DOTSON D foul personal (1 - 5)
08:08	4 BARCELLO A 3pt FG , jump shot missed			
08:04	33 NIXON D offensive rebound (3)			
08:03	33 NIXON D 2pt FG in the paint, layup missed			
07:59				35 AZUBUIKE U defensive rebound (2)
07:49				2 BRAUN C 3pt FG , jump shot missed
07:46	4 BARCELLO A defensive rebound (1)			
07:25	30 HAWS T 3pt FG , jump shot missed			
07:21				35 AZUBUIKE U defensive rebound (3)
07:13	33 NIXON D foul drawn (2)			2 BRAUN C foul offensive (1 - 6)
07:13				2 BRAUN C turnover offensive (1)
07:13	Timeout media			
07:13	30 HAWS T substitution out			
07:13	33 NIXON D substitution out			
07:13	5 TOOLSON J substitution in			
07:13	40 LEE K substitution in			
07:13				2 BRAUN C substitution out
07:13				13 ENARUNA T substitution in
06:58	5 TOOLSON J turnover bad pass (1)			
06:45				35 AZUBUIKE U turnover 3 seconds (2)
06:31	44 HARDING C turnover bad pass (1)			4 MOSS I steal (1)
06:25				1 DOTSON D 2pt FG in the paint, layup missed



**Kansas at BYU**

11/27/19 Lahaina Civic Center, Lahaina  
2019-20 Men's Basketball

**Game Time:** 3:30 AM  
**Game Duration:** 1:47  
**Attendance:** 2,400

**Officials:** Terry Wymer, Chris Rastatter, Keith Kimble

Game Time	BYU	Score	Diff	KU
06:21	5 TOOLSON J defensive rebound (6)			
06:07	4 BARCELLO A turnover bad pass (1)			1 DOTSON D steal (1)
05:58		<b>19-20</b>	<b>-1</b>	30 AGBAJI O 2pt FG in the paint, layup made (4)
05:58				1 DOTSON D assist (3)
05:26	4 BARCELLO A 3pt FG , jump shot missed			
05:23	offensive dead ball rebound (2)			
05:23	turnover shot clock (8)			
05:23	2 SELJAAS Z substitution out			
05:23	4 BARCELLO A substitution out			
05:23	30 HAWS T substitution in			
05:23	33 NIXON D substitution in			
05:10	44 HARDING C foul personal (1 - 4)			1 DOTSON D foul drawn (3)
04:57				13 ENARUNA T turnover bad pass (1)
04:44	33 NIXON D 2pt FG in the paint, layup missed			
04:41				35 AZUBUIKE U defensive rebound (4)
04:36		<b>19-22</b>	<b>-3</b>	1 DOTSON D 2pt FG fast break in the paint, made (7)
04:13	44 HARDING C foul offensive (2 - 5)			4 MOSS I foul drawn (1)
04:13	44 HARDING C turnover offensive (2)			
04:13	40 LEE K substitution out			
04:13	2 SELJAAS Z substitution in			
03:53				1 DOTSON D 2pt FG in the paint, missed
03:52	defensive rebound (14)			
03:52		Timeout media		
03:22	30 HAWS T turnover lost ball (2)			35 AZUBUIKE U steal (1)
03:17		<b>19-24</b>	<b>-5</b>	35 AZUBUIKE U 2pt FG fast break in the paint, dunk, made (4)
03:00	2 SELJAAS Z 3pt FG , jump shot missed			
02:55				30 AGBAJI O defensive rebound (2)
02:50	33 NIXON D steal (3)			1 DOTSON D turnover bad pass (1)
02:50	44 HARDING C substitution out			
02:50	4 BARCELLO A substitution in			
02:24	30 HAWS T 3pt FG , jump shot missed			
02:21				30 AGBAJI O defensive rebound (3)
02:22	33 NIXON D foul personal (2 - 6)			30 AGBAJI O foul drawn (2)
02:21	33 NIXON D substitution out			
02:21	40 LEE K substitution in			
02:08	30 HAWS T steal (1)			30 AGBAJI O turnover bad pass (1)
02:03	40 LEE K 2pt FG in the paint, layup made (2)	<b>21-24</b>	<b>-3</b>	
02:03	2 SELJAAS Z assist (1)			
02:03				35 AZUBUIKE U substitution out
02:03				33 MCCORMACK D substitution in
01:52		<b>21-27</b>	<b>-6</b>	30 AGBAJI O 3pt FG , jump shot made (7)
01:52				1 DOTSON D assist (4)
01:35	40 LEE K 3pt FG , jump shot made (5)	<b>24-27</b>	<b>-3</b>	
01:35	4 BARCELLO A assist (1)			
01:18	40 LEE K foul personal (2 - 7)			33 MCCORMACK D foul drawn (1)
01:18	40 LEE K substitution out			
01:18	13 MAUGHAN T substitution in			
01:18				4 MOSS I substitution out
01:18				2 BRAUN C substitution in



Official Basketball Play by Play - First Half

### Kansas at BYU

11/27/19 Lahaina Civic Center, Lahaina  
2019-20 Men's Basketball

**Game Time:** 3:30 AM  
**Game Duration:** 1:47  
**Attendance:** 2,400

**Officials:** Terry Wymer, Chris Rastatter, Keith Kimble

Game Time	BYU	Score	Diff	KU
01:18		<b>24-28</b>	<b>-4</b>	33 MCCORMACK D 1&1 free throw 1 made (7)
01:18		<b>24-29</b>	<b>-5</b>	33 MCCORMACK D 1&1 free throw 2 made (8)
01:05	30 HAWS T 3pt FG , jump shot made (8)	<b>27-29</b>	<b>-2</b>	
01:05	2 SELJAAS Z assist (2)			
00:58				Timeout 30 Sec
00:46				1 DOTSON D 2pt FG in the paint, missed
00:42	4 BARCELLO A defensive rebound (2)			
00:20	30 HAWS T 3pt FG , jump shot missed			
00:14				33 MCCORMACK D defensive rebound (2)
00:01				2 BRAUN C 3pt FG , jump shot missed
00:00	30 HAWS T defensive rebound (2)			
<b>END OF PERIOD</b>				
<b>BYU 27-29 KU</b>				



**Kansas at BYU**

11/27/19 Lahaina Civic Center, Lahaina  
2019-20 Men's Basketball

Game Time: 3:30 AM  
Game Duration: 1:47  
Attendance: 2,400

Officials: Terry Wymer, Chris Rastatter, Keith Kimble

**Kansas - 29**

NO.	Name	F/C	Min	FG			Rebounds			Fouls		TP	AS	TO	ST	Blocks		+/-
				M-A	M-A	M-A	OR	DR	TOT	PF	FD					BS	BA	
33	David McCormack	F	10:10	3-5	0-0	2-2	0	2	2	0	1	8	0	0	0	0	0	-3
35	Udoka Azubuike	C	13:55	2-3	0-0	0-0	0	4	4	0	0	4	0	2	1	0	0	5
00	Marcus Garrett	G	10:12	0-1	0-1	0-0	0	3	3	2	0	0	1	2	0	0	0	1
1	Devon Dotson	G	19:18	3-9	0-1	1-1	0	1	1	1	3	7	4	1	1	0	0	4
30	Ochai Agbaji	G	16:26	3-4	1-2	0-0	0	3	3	0	2	7	2	1	0	0	0	4
4	Isaiah Moss		12:59	1-2	1-2	0-0	1	1	2	2	1	3	0	0	1	0	0	5
13	Tristan Enaruna		11:53	0-2	0-1	0-0	0	0	0	0	0	0	1	1	0	1	0	-1
2	Christian Braun		03:57	0-2	0-2	0-0	0	0	0	1	0	0	0	1	0	0	0	-3
22	Silvio DeSousa		01:10	0-1	0-0	0-0	1	0	1	0	0	0	0	0	0	0	0	-2
Team							0	0	0		0		0					
<b>Totals</b>				12-29	2-9	3-3	2	14	16	6	7	29	8	8	3	1	0	2

Shooting By Period		
1st FG%	12-29	41.4%
3PT%	2-9	22.2%
FT%	3-3	100%
GM FG%	12-29	41.4%
3PT%	2-9	22.2%
FT%	3-3	100.0%

Dead Ball Rebounds: 0, 0

Technical Fouls::NONE

**BYU - 27**

NO.	Name	F/C	Min	FG			Rebounds			Fouls		TP	AS	TO	ST	Blocks		+/-
				M-A	M-A	M-A	OR	DR	TOT	PF	FD					BS	BA	
33	Dalton Nixon	F	12:56	1-6	0-3	0-0	1	2	3	2	2	2	0	2	3	0	0	-3
40	Kolby Lee	F	11:42	2-2	1-1	0-0	0	0	0	2	0	5	1	1	0	0	0	0
4	Alex Barcello	G	14:35	2-4	1-3	0-0	0	2	2	1	0	5	1	1	0	0	0	2
5	Jake Toolson	G	17:21	2-4	1-2	0-0	0	6	6	0	0	5	1	1	0	0	0	-4
30	TJ Haws	G	18:10	3-8	2-6	0-0	0	2	2	0	3	8	2	2	1	0	1	0
2	Zac Seljaas		14:04	0-2	0-2	2-3	0	1	1	0	1	2	2	0	0	0	0	-2
44	Connor Harding		09:54	0-0	0-0	0-0	0	1	1	2	0	0	0	2	0	0	0	-4
13	Taylor Maughan		01:18	0-0	0-0	0-0	0	0	0	0	0	0	0	0	0	0	0	1
Team							0	1	1		0		1					
<b>Totals</b>				10-26	5-17	2-3	1	15	16	7	6	27	7	10	4	0	1	-2

Shooting By Period		
1st FG%	10-26	38.5%
3PT%	5-17	29.4%
FT%	2-3	66.7%
GM FG%	10-26	38.5%
3PT%	5-17	29.4%
FT%	2-3	66.7%

Dead Ball Rebounds: 2, 0

Technical Fouls::NONE

	KU	BYU
Biggest lead	6 (1 <sup>st</sup> 1:52)	2 (1 <sup>st</sup> 15:46)
Best Scoring Run	6(1 <sup>st</sup> 3:17)	5(1 <sup>st</sup> 9:52)
Lead Changes	10	
Times Tied	2	
Time with Lead	11:00	08:03

Points from	KU	BYU
Turnovers	7	2
Paint	16	6
Second Chance	0	0
Fast Breaks	9	5
Bench	3	2

	Period by Period Scoring	
	1st	TOT
KU	29	29
BYU	27	27



**Kansas at BYU**

11/27/19 Lahaina Civic Center, Lahaina  
2019-20 Men's Basketball

**Game Time:** 3:30 AM  
**Game Duration:** 1:47  
**Attendance:** 2,400

**Officials:** Terry Wymer, Chris Rastatter, Keith Kimble

**Period 2**

**Quarter Starters:**

<b>BYU</b>	5 Toolson J	30 Haws T	4 Barcello A	33 Nixon D	40 Lee K
<b>KU</b>	1 Dotson D	30 Agbaji O	33 McCormack D	00 Garrett M	35 Azubuike U

Game Time	BYU	Score	Diff	KU
20:00	2 SELJAAS Z substitution out			
20:00	13 MAUGHAN T substitution out			
20:00	33 NIXON D substitution in			
20:00	40 LEE K substitution in			
20:00				2 BRAUN C substitution out
20:00				13 ENARUNA T substitution out
20:00				00 GARRETT M substitution in
20:00				35 AZUBUIKE U substitution in
19:45	33 NIXON D foul personal (3 - 1)			35 AZUBUIKE U foul drawn (1)
19:39				1 DOTSON D turnover bad pass (2)
19:10	5 TOOLSON J 2pt FG outside the paint, made (7)	<b>29-29</b>	<b>0</b>	
18:53		<b>29-31</b>	<b>-2</b>	33 MCCORMACK D 2pt FG in the paint, layup made (10)
18:53				00 GARRETT M assist (2)
18:37	5 TOOLSON J 3pt FG , jump shot missed			
18:33				35 AZUBUIKE U defensive rebound (5)
18:27		<b>29-33</b>	<b>-4</b>	00 GARRETT M 2pt FG in the paint, made (2)
18:00	40 LEE K 2pt FG outside the paint, jump shot missed			
17:57	40 LEE K offensive rebound (1)			
17:48	40 LEE K 2pt FG in the paint, made (7)	<b>31-33</b>	<b>-2</b>	
17:48	5 TOOLSON J assist (2)			
17:39		<b>31-35</b>	<b>-4</b>	33 MCCORMACK D 2pt FG in the paint, alleyoop made (12)
17:39				1 DOTSON D assist (5)
17:22	33 NIXON D turnover bad pass (3)			
17:15				30 AGBAJI O turnover bad pass (2)
17:15	33 NIXON D substitution out			
17:15	2 SELJAAS Z substitution in			
17:15				30 AGBAJI O substitution out
17:15				4 MOSS I substitution in
16:54	2 SELJAAS Z 3pt FG , jump shot missed			
16:51				defensive rebound (18)
16:35				1 DOTSON D 2pt FG in the paint, missed
16:32	40 LEE K defensive rebound (2)			
16:29	4 BARCELLO A 3pt FG , jump shot missed			
16:26				00 GARRETT M defensive rebound (4)
16:17	4 BARCELLO A steal (1)			33 MCCORMACK D turnover bad pass (1)
16:08	30 HAWS T 3pt FG , jump shot missed			
16:04				35 AZUBUIKE U defensive rebound (6)
15:51		<b>31-38</b>	<b>-7</b>	00 GARRETT M 3pt FG , jump shot made (5)
15:51				33 MCCORMACK D assist (1)
15:35	2 SELJAAS Z 3pt FG , jump shot missed			
15:32				4 MOSS I defensive rebound (3)
15:24				1 DOTSON D 3pt FG , jump shot missed
15:23				35 AZUBUIKE U offensive rebound (7)





**Kansas at BYU**

11/27/19 Lahaina Civic Center, Lahaina  
2019-20 Men's Basketball

**Game Time:** 3:30 AM  
**Game Duration:** 1:47  
**Attendance:** 2,400

**Officials:** Terry Wymer, Chris Rastatter, Keith Kimble

Game Time	BYU	Score	Diff	KU
15:24	Timeout media			
15:24	40 LEE K foul shooting (3 - 2)			35 AZUBUIKE U foul drawn (2)
15:24	4 BARCELLO A substitution out			
15:24	44 HARDING C substitution in			
15:24				33 MCCORMACK D substitution out
15:24				30 AGBAJI O substitution in
15:24				35 AZUBUIKE U free throw 1 - 2 missed
15:24				offensive dead ball rebound (1)
15:24		<b>31-39</b>	<b>-8</b>	35 AZUBUIKE U free throw 2 - 2 made (5)
14:59	40 LEE K turnover lost ball (2)			00 GARRETT M steal (1)
14:54				4 MOSS I 3pt FG , jump shot missed
14:50	44 HARDING C defensive rebound (2)			
14:27	44 HARDING C turnover bad pass (3)			
14:04		<b>31-42</b>	<b>-11</b>	30 AGBAJI O 3pt FG , jump shot made (10)
14:04				35 AZUBUIKE U assist (1)
13:37	40 LEE K 3pt FG , jump shot missed			
13:32	44 HARDING C offensive rebound (3)			
13:25	5 TOOLSON J 2pt FG outside the paint, missed			
13:20	40 LEE K offensive rebound (3)			
13:20	40 LEE K 2pt FG in the paint, layup made (9)	<b>33-42</b>	<b>-9</b>	
13:05	40 LEE K foul shooting (4 - 3)			35 AZUBUIKE U foul drawn (3)
13:05				35 AZUBUIKE U free throw 1 - 2 missed
13:05				offensive dead ball rebound (2)
13:05	5 TOOLSON J substitution out			
13:05	40 LEE K substitution out			
13:05	4 BARCELLO A substitution in			
13:05	33 NIXON D substitution in			
13:05				35 AZUBUIKE U free throw 2 - 2 missed
13:05	33 NIXON D defensive rebound (4)			
12:40	33 NIXON D 3pt FG , jump shot missed			
12:35				35 AZUBUIKE U defensive rebound (8)
12:28		<b>33-44</b>	<b>-11</b>	35 AZUBUIKE U 2pt FG in the paint, dunk, made (7)
12:28				30 AGBAJI O assist (3)
12:15				35 AZUBUIKE U substitution out
12:15				33 MCCORMACK D substitution in
12:15	Timeout 30 Sec			
12:15	Timeout media			
12:15				00 GARRETT M substitution out
12:15				13 ENARUNA T substitution in
12:07	30 HAWS T 2pt FG outside the paint, made (10)	<b>35-44</b>	<b>-9</b>	
11:48		<b>35-46</b>	<b>-11</b>	30 AGBAJI O 2pt FG outside the paint, made (12)
11:28	33 NIXON D turnover bad pass (4)			
11:28	Timeout media			
11:28	44 HARDING C substitution out			
11:28	5 TOOLSON J substitution in			
11:01				30 AGBAJI O 3pt FG , jump shot missed
10:56	5 TOOLSON J defensive rebound (7)			
10:37	5 TOOLSON J 3pt FG , jump shot missed			
10:32				33 MCCORMACK D defensive rebound (3)



**Kansas at BYU**

11/27/19 Lahaina Civic Center, Lahaina  
2019-20 Men's Basketball

**Game Time:** 3:30 AM  
**Game Duration:** 1:47  
**Attendance:** 2,400

**Officials:** Terry Wymer, Chris Rastatter, Keith Kimble

Game Time	BYU	Score	Diff	KU
10:18				1 DOTSON D 3pt FG , jump shot missed
10:14				30 AGBAJI O offensive rebound (4)
10:13		<b>35-48</b>	<b>-13</b>	30 AGBAJI O 2pt FG in the paint, layup made (14)
09:56	30 HAWS T 2pt FG outside the paint, missed			
09:53				33 MCCORMACK D defensive rebound (4)
09:49				4 MOSS I 3pt FG , jump shot missed
09:45				13 ENARUNA T offensive rebound (1)
09:43				13 ENARUNA T 2pt FG in the paint, layup missed
09:42				33 MCCORMACK D offensive rebound (5)
09:41	30 HAWS T foul personal (1 - 4)			33 MCCORMACK D foul drawn (2)
09:41	2 SELJAAS Z substitution out			
09:41	30 HAWS T substitution out			
09:41	40 LEE K substitution in			
09:41	44 HARDING C substitution in			
09:41				33 MCCORMACK D substitution out
09:41				35 AZUBUIKE U substitution in
09:18				13 ENARUNA T substitution out
09:18				00 GARRETT M substitution in
09:33		<b>35-50</b>	<b>-15</b>	1 DOTSON D 2pt FG in the paint, made (9)
09:01	turnover shot clock (15)			
08:48				4 MOSS I turnover travel (1)
08:48	33 NIXON D substitution out			
08:48	21 KNELL T substitution in			
08:39	21 KNELL T 3pt FG , jump shot missed			
08:35				30 AGBAJI O defensive rebound (5)
08:26		<b>35-52</b>	<b>-17</b>	35 AZUBUIKE U 2pt FG in the paint, layup made (9)
08:26				1 DOTSON D assist (6)
08:26	21 KNELL T foul shooting (1 - 5)			35 AZUBUIKE U foul drawn (4)
08:26				35 AZUBUIKE U free throw 1 - 1 missed
08:25	44 HARDING C defensive rebound (4)			
08:08	44 HARDING C foul drawn (1)			00 GARRETT M foul personal (3 - 1)
08:05	44 HARDING C 3pt FG , jump shot missed			
08:01				00 GARRETT M defensive rebound (5)
07:57	4 BARCELLO A foul personal (2 - 6)			1 DOTSON D foul drawn (4)
07:57	Timeout media			
07:57	21 KNELL T substitution out			
07:57	30 HAWS T substitution in			
07:54				30 AGBAJI O 2pt FG in the paint, layup blocked
07:54	21 KNELL T block (1)			
07:54	4 BARCELLO A defensive rebound (3)			
07:09	4 BARCELLO A substitution out			
07:09	21 KNELL T substitution in			
07:35	5 TOOLSON J turnover lost ball (2)			00 GARRETT M steal (2)
07:31		<b>35-54</b>	<b>-19</b>	4 MOSS I 2pt FG fast break in the paint, layup made (5)
07:31				00 GARRETT M assist (3)
07:31	21 KNELL T foul shooting (2 - 7)			4 MOSS I foul drawn (2)
07:31				4 MOSS I free throw fast break 1 - 1 missed
07:31	44 HARDING C defensive rebound (5)			
07:03	30 HAWS T 2pt FG in the paint, layup made (12)	<b>37-54</b>	<b>-17</b>	



**Kansas at BYU**

11/27/19 Lahaina Civic Center, Lahaina  
2019-20 Men's Basketball

**Game Time:** 3:30 AM  
**Game Duration:** 1:47  
**Attendance:** 2,400

**Officials:** Terry Wymer, Chris Rastatter, Keith Kimble

Game Time	BYU	Score	Diff	KU
07:03	30 HAWS T foul drawn (4)			35 AZUBUIKE U foul shooting (1 - 2)
07:03	21 KNELL T substitution out			
07:03	33 NIXON D substitution in			
07:03	30 HAWS T free throw 1 - 1 made (13)	<b>38-54</b>	<b>-16</b>	
06:48	5 TOOLSON J foul shooting (1 - 8)			1 DOTSON D foul drawn (5)
06:48		<b>38-55</b>	<b>-17</b>	1 DOTSON D free throw 1 - 2 made (10)
06:48		<b>38-56</b>	<b>-18</b>	1 DOTSON D free throw 2 - 2 made (11)
06:38	30 HAWS T 3pt FG , jump shot made (16)	<b>41-56</b>	<b>-15</b>	
06:38	33 NIXON D assist (1)			
06:18		<b>41-58</b>	<b>-17</b>	1 DOTSON D 2pt FG in the paint, made (13)
06:02	33 NIXON D turnover lost ball (5)			30 AGBAJI O steal (1)
05:55				1 DOTSON D 2pt FG in the paint, layup missed
05:51				35 AZUBUIKE U offensive rebound (9)
05:50		<b>41-60</b>	<b>-19</b>	35 AZUBUIKE U 2pt FG in the paint, dunk, made (11)
05:41	30 HAWS T 3pt FG , jump shot missed			
05:38				00 GARRETT M defensive rebound (6)
05:25				4 MOSS I 2pt FG in the paint, layup missed
05:22				35 AZUBUIKE U offensive rebound (10)
05:16				00 GARRETT M 3pt FG , jump shot missed
05:13	44 HARDING C defensive rebound (6)			
04:56	40 LEE K 2pt FG in the paint, layup made (11)	<b>43-60</b>	<b>-17</b>	
04:56	30 HAWS T assist (3)			
04:55	Timeout 30 Sec			
04:55				30 AGBAJI O substitution out
04:55				35 AZUBUIKE U substitution out
04:55				2 BRAUN C substitution in
04:55				33 MCCORMACK D substitution in
04:42		<b>43-62</b>	<b>-19</b>	00 GARRETT M 2pt FG in the paint, made (7)
04:28	40 LEE K 2pt FG in the paint, layup made (13)	<b>45-62</b>	<b>-17</b>	
04:28	30 HAWS T assist (4)			
04:11		<b>45-64</b>	<b>-19</b>	33 MCCORMACK D 2pt FG in the paint, made (14)
04:11				4 MOSS I assist (1)
03:51	5 TOOLSON J 3pt FG , jump shot missed			
03:46	30 HAWS T offensive rebound (3)			
03:43	33 NIXON D 3pt FG , jump shot made (5)	<b>48-64</b>	<b>-16</b>	
03:43	30 HAWS T assist (5)			
03:22		<b>48-66</b>	<b>-18</b>	33 MCCORMACK D 2pt FG outside the paint, made (16)
03:22				1 DOTSON D assist (7)
03:08	30 HAWS T turnover lost ball (3)			1 DOTSON D steal (2)
03:04		<b>48-68</b>	<b>-20</b>	2 BRAUN C 2pt FG fast break in the paint, dunk, made (2)
03:04				1 DOTSON D assist (8)
02:46	30 HAWS T turnover lost ball (4)			4 MOSS I steal (2)
02:37				4 MOSS I 3pt FG , jump shot missed
02:34	44 HARDING C defensive rebound (7)			
02:28	44 HARDING C 3pt FG , jump shot made (3)	<b>51-68</b>	<b>-17</b>	
02:28	33 NIXON D assist (2)			
02:24	Timeout 30 Sec			
02:24		Timeout media		
02:24	5 TOOLSON J substitution out			



**Kansas at BYU**

11/27/19 Lahaina Civic Center, Lahaina  
2019-20 Men's Basketball

**Game Time:** 3:30 AM  
**Game Duration:** 1:47  
**Attendance:** 2,400

**Officials:** Terry Wymer, Chris Rastatter, Keith Kimble

Game Time	BYU	Score	Diff	KU
02:24	30 HAWS T substitution out			
02:24	3 NIELD B substitution in			
02:24	13 MAUGHAN T substitution in			
02:24				00 GARRETT M substitution out
02:24				33 MCCORMACK D substitution out
02:24				22 DESOUSA S substitution in
02:24				30 AGBAJI O substitution in
02:04				22 DESOUSA S 2pt FG in the paint, jump shot missed
02:01				1 DOTSON D offensive rebound (2)
01:54				1 DOTSON D 2pt FG outside the paint, jump shot missed
01:53	13 MAUGHAN T defensive rebound (1)			
01:53	13 MAUGHAN T foul drawn (1)			22 DESOUSA S foul personal (1 - 3)
01:53				1 DOTSON D substitution out
01:53				13 ENARUNA T substitution in
01:39	44 HARDING C 2pt FG in the paint, layup made (5)	<b>53-68</b>	<b>-15</b>	
01:15	44 HARDING C foul personal (3 - 9)			13 ENARUNA T foul drawn (1)
01:15	33 NIXON D substitution out			
01:15	40 LEE K substitution out			
01:15	2 SELJAAS Z substitution in			
01:15	21 KNELL T substitution in			
01:15				30 AGBAJI O substitution out
01:15				20 JANKOVICH M substitution in
01:15		<b>53-69</b>	<b>-16</b>	13 ENARUNA T 1&1 free throw 1 made (1)
01:15		<b>53-70</b>	<b>-17</b>	13 ENARUNA T 1&1 free throw 2 made (2)
01:11	44 HARDING C 2pt FG in the paint, jump shot missed			
01:07				22 DESOUSA S defensive rebound (2)
00:49				4 MOSS I 2pt FG in the paint, missed
00:46	21 KNELL T defensive rebound (1)			
00:38	13 MAUGHAN T turnover bad pass (1)			13 ENARUNA T steal (1)
00:31	13 MAUGHAN T foul personal (1 - 10)			13 ENARUNA T foul drawn (2)
00:31		<b>53-71</b>	<b>-18</b>	13 ENARUNA T free throw 1 - 2 made (3)
00:31	2 SELJAAS Z substitution out			
00:31	44 HARDING C substitution out			
00:31	15 PEARSON C substitution in			
00:31	24 TROY E substitution in			
00:31				2 BRAUN C substitution out
00:31				4 MOSS I substitution out
00:31				5 ELLIOTT E substitution in
00:31				12 TEAHAN C substitution in
00:31				13 ENARUNA T free throw 2 - 2 missed
00:30	13 MAUGHAN T defensive rebound (2)			
00:19	3 NIELD B foul drawn (1)			20 JANKOVICH M foul personal (1 - 4)
00:12	24 TROY E 3pt FG , jump shot made (3)	<b>56-71</b>	<b>-15</b>	
00:12	3 NIELD B assist (1)			
<b>END OF GAME</b>				
<b>BYU 56-71 KU</b>				



**Kansas at BYU**

11/27/19 Lahaina Civic Center, Lahaina  
2019-20 Men's Basketball

Game Time: 3:30 AM  
Game Duration: 1:47  
Attendance: 2,400

Officials: Terry Wymer, Chris Rastatter, Keith Kimble

**Kansas - 42**

NO.	Name	Min	FG			Rebounds			Fouls		TP	AS	TO	ST	Blocks		+/-
			M-A	M-A	M-A	OR	DR	TOT	PF	FD					BS	BA	
33	David McCormack	F 09:41	4-4	0-0	0-0	1	2	3	0	1	8	1	1	0	0	0	7
35	Udoka Azubuike	C 12:31	3-3	0-0	1-5	3	3	6	1	4	7	1	0	0	0	0	13
00	Marcus Garrett	G 15:02	3-4	1-2	0-0	0	3	3	1	0	7	2	0	2	0	0	13
1	Devon Dotson	G 18:07	2-7	0-2	2-2	1	0	1	0	2	6	4	1	1	0	0	15
30	Ochai Agbaji	G 14:23	3-5	1-2	0-0	1	1	2	0	0	7	1	1	1	0	1	10
4	Isaiah Moss	16:43	1-6	0-3	0-1	0	1	1	0	1	2	1	1	1	0	0	14
13	Tristan Enaruna	04:27	0-1	0-0	3-4	1	0	1	0	2	3	0	0	1	0	0	0
2	Christian Braun	04:23	1-1	0-0	0-0	0	0	0	0	0	2	0	0	0	0	0	1
22	Silvio DeSousa	02:24	0-1	0-0	0-0	0	1	1	1	0	0	0	0	0	0	0	-2
20	Michael Jankovich	01:15	0-0	0-0	0-0	0	0	0	1	0	0	0	0	0	0	0	0
5	Elijah Elliott	00:32	0-0	0-0	0-0	0	0	0	0	0	0	0	0	0	0	0	-3
12	Chris Teahan	00:32	0-0	0-0	0-0	0	0	0	0	0	0	0	0	0	0	0	-3
Team						0	1	1			0		0				
<b>Totals</b>			17-32	2-9	6-12	7	12	19	4	10	42	10	4	6	0	1	13

Shooting By Period		
2 <sup>nd</sup> FG%	17-32	53.1%
3PT%	2-9	22.2%
FT%	6-12	50%
GM FG%	17-32	53.1%
3PT%	2-9	22.2%
FT%	6-12	50.0%

Dead Ball Rebounds: 2, 0

Technical Fouls::NONE

**BYU - 29**

NO.	Name	Min	FG			Rebounds			Fouls		TP	AS	TO	ST	Blocks		+/-
			M-A	M-A	M-A	OR	DR	TOT	PF	FD					BS	BA	
33	Dalton Nixon	F 12:50	1-2	1-2	0-0	0	1	1	1	0	3	2	3	0	0	0	-6
40	Kolby Lee	F 15:21	4-6	0-1	0-0	2	1	3	2	0	8	0	1	0	0	0	-9
4	Alex Barcello	G 10:01	0-1	0-1	0-0	0	1	1	1	0	0	0	0	1	0	0	-13
5	Jake Toolson	G 15:59	1-5	0-3	0-0	0	1	1	1	0	2	1	1	0	0	0	-13
30	TJ Haws	G 15:52	3-6	1-3	1-1	1	0	1	1	1	8	3	2	0	0	0	-11
2	Zac Seljaas	08:17	0-2	0-2	0-0	0	0	0	0	0	0	0	0	0	0	0	-12
44	Connor Harding	13:05	2-4	1-2	0-0	1	5	6	1	1	5	0	1	0	0	0	-9
21	Trevin Knell	02:43	0-1	0-1	0-0	0	1	1	2	0	0	0	0	0	1	0	-2
3	Blaze Nield	02:24	0-0	0-0	0-0	0	0	0	0	1	0	1	0	0	0	0	2
13	Taylor Maughan	02:24	0-0	0-0	0-0	0	2	2	1	1	0	0	1	0	0	0	2
15	Cameron Pearson	00:32	0-0	0-0	0-0	0	0	0	0	0	0	0	0	0	0	0	3
24	Evan Troy	00:32	1-1	1-1	0-0	0	0	0	0	0	3	0	0	0	0	0	3
Team						0	0	0			0		1				
<b>Totals</b>			12-28	4-16	1-1	4	12	16	10	4	29	7	10	1	1	0	-13

Shooting By Period		
2 <sup>nd</sup> FG%	12-28	42.9%
3PT%	4-16	25.0%
FT%	1-1	100%
GM FG%	12-28	42.9%
3PT%	4-16	25.0%
FT%	1-1	100.0%

Dead Ball Rebounds: 0, 0

Technical Fouls::NONE

	KU	BYU
Biggest lead	20 (2 <sup>nd</sup> 3:04)	0 (1 <sup>st</sup> 20:00)
Best Scoring Run	10(2 <sup>nd</sup> 7:31)	5(2 <sup>nd</sup> 1:39)
Lead Changes	0	
Times Tied	1	
Time with Lead	18:53	00:00

Points from	KU	BYU
Turnovers	10	2
Paint	26	12
Second Chance	7	7
Fast Breaks	4	0
Bench	7	8

	Period by Period Scoring	
	2 <sup>nd</sup>	TOT
KU	42	42
BYU	29	29



**Kansas at BYU**

11/27/19 Lahaina Civic Center, Lahaina  
2019-20 Men's Basketball

**Game Time:** 3:30 AM  
**Game Duration:** 1:47  
**Attendance:** 2,400

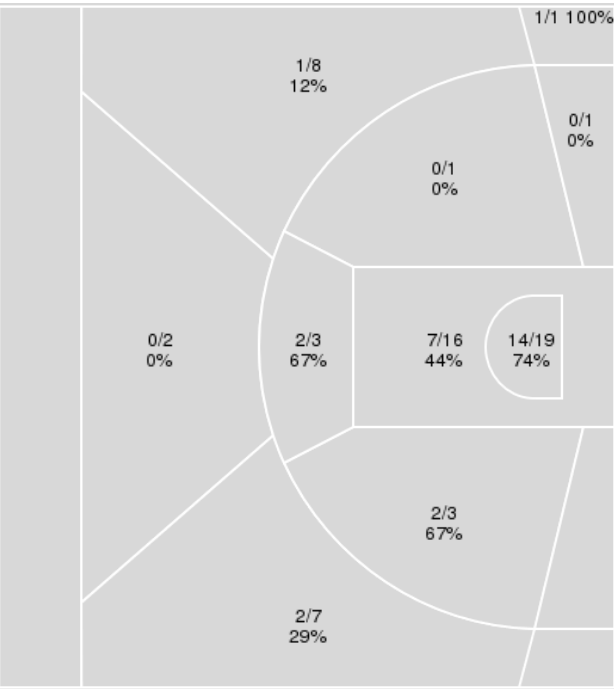
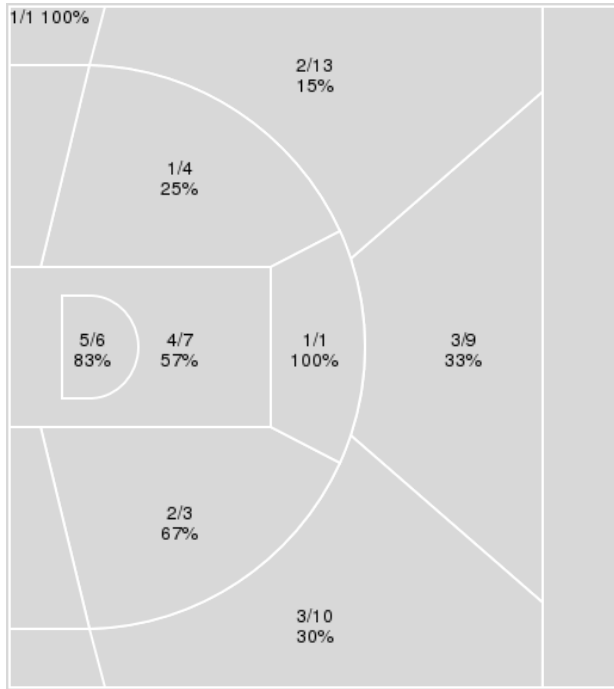
**Officials:** Terry Wymer, Chris Rastatter, Keith Kimble

{ Players => 1, 2, 3, 4, 5, 10, 13, 15, 21, 23, 24, 25, 30, 33, 40, 42, 44; }  
FG Types => All; Results => All;

{ Players => 00, 1, 2, 3, 4, 5, 10, 12, 13, 20, 22, 30, 33, 35, 44; } FG  
Types => All; Results => All;

**BYU**

**Kansas**



BYU	M/A	%
Field Goals	22/54	41
2 Points	13/21	62
3 Points	9/33	27
Free Throws	3/4	75

Kansas	M/A	%
Field Goals	29/61	48
2 Points	25/43	58
3 Points	4/18	22
Free Throws	9/15	60



**Kansas at BYU**

11/27/19 Lahaina Civic Center, Lahaina  
2019-20 Men's Basketball

Game Time: 3:30 AM  
Game Duration: 1:47  
Attendance: 2,400

Officials: Terry Wymer, Chris Rastatter, Keith Kimble

**Kansas**

No	Name	Mins		Score		Points Diff		Points per Min		Assists		Rebounds		Steals		Turnovers	
		On	Off	On	Off	On	Off	On	Off	On	Off	On	Off	On	Off	On	Off
00	Marcus Garrett	25:14	14:46	53 - 39	18 - 17	14	1	2.10	1.22	16	2	21	14	5	4	7	5
1	Devon Dotson	37:25	02:35	68 - 49	3 - 7	19	-4	1.82	1.16	18	0	33	2	8	1	12	0
2	Christian Braun	08:20	31:40	13 - 15	58 - 41	-2	17	1.56	1.83	3	15	6	29	3	6	2	10
4	Isaiah Moss	29:42	10:18	55 - 36	16 - 20	19	-4	1.85	1.55	13	5	30	5	9	0	7	5
5	Elijah Elliott	00:32	39:28	0 - 3	71 - 53	-3	18	0.00	1.80	0	18	0	35	0	9	0	12
12	Chris Teahan	00:32	39:28	0 - 3	71 - 53	-3	18	0.00	1.80	0	18	0	35	0	9	0	12
13	Tristan Enaruna	16:20	23:40	23 - 24	48 - 32	-1	16	1.41	2.03	4	14	15	20	4	5	4	8
20	Michael Jankovich	01:15	38:45	3 - 3	68 - 53	0	15	2.40	1.75	0	18	1	34	1	8	0	12
22	Silvio DeSousa	03:34	36:26	3 - 7	68 - 49	-4	19	0.84	1.87	0	18	3	32	1	8	1	11
30	Ochai Agbaji	30:49	09:11	52 - 38	19 - 18	14	1	1.69	2.07	12	6	25	10	6	3	11	1
33	David McCormack	19:51	20:09	39 - 35	32 - 21	4	11	1.96	1.59	12	6	18	17	2	7	5	7
35	Udoka Azubuike	26:26	13:34	46 - 28	25 - 28	18	-3	1.74	1.84	12	6	23	12	6	3	11	1

**BYU**

No	Name	Mins		Score		Points Diff		Points per Min		Assists		Rebounds		Steals		Turnovers	
		On	Off	On	Off	On	Off	On	Off	On	Off	On	Off	On	Off	On	Off
2	Zac Seljaas	22:21	17:39	21 - 35	35 - 36	-14	-1	0.94	1.98	4	10	20	12	3	2	11	9
3	Blaze Nield	02:24	37:36	5 - 3	51 - 68	2	-17	2.08	1.36	1	13	3	29	0	5	1	19
4	Alex Barcello	24:36	15:24	28 - 39	28 - 32	-11	-4	1.14	1.82	8	6	17	15	4	1	11	9
5	Jake Toolson	33:20	06:40	47 - 64	9 - 7	-17	2	1.41	1.35	13	1	25	7	5	0	17	3
13	Taylor Maughan	03:42	36:18	8 - 5	48 - 66	3	-18	2.16	1.32	2	12	5	27	0	5	1	19
15	Cameron Pearson	00:32	39:28	3 - 0	53 - 71	3	-18	5.63	1.34	1	13	1	31	0	5	0	20
21	Trevin Knell	02:43	37:17	5 - 7	51 - 64	-2	-13	1.84	1.37	1	13	5	27	0	5	2	18
24	Evan Troy	00:32	39:28	3 - 0	53 - 71	3	-18	5.63	1.34	1	13	1	31	0	5	0	20
30	TJ Haws	34:02	05:58	51 - 62	5 - 9	-11	-4	1.50	0.84	13	1	27	5	5	0	14	6
33	Dalton Nixon	25:46	14:14	36 - 45	20 - 26	-9	-6	1.40	1.41	10	4	17	15	3	2	12	8
40	Kolby Lee	27:03	12:57	44 - 53	12 - 18	-9	-6	1.63	0.93	11	3	19	13	4	1	15	5
44	Connor Harding	22:59	17:01	29 - 42	27 - 29	-13	-2	1.26	1.59	5	9	20	12	1	4	16	4



**Kansas at BYU**

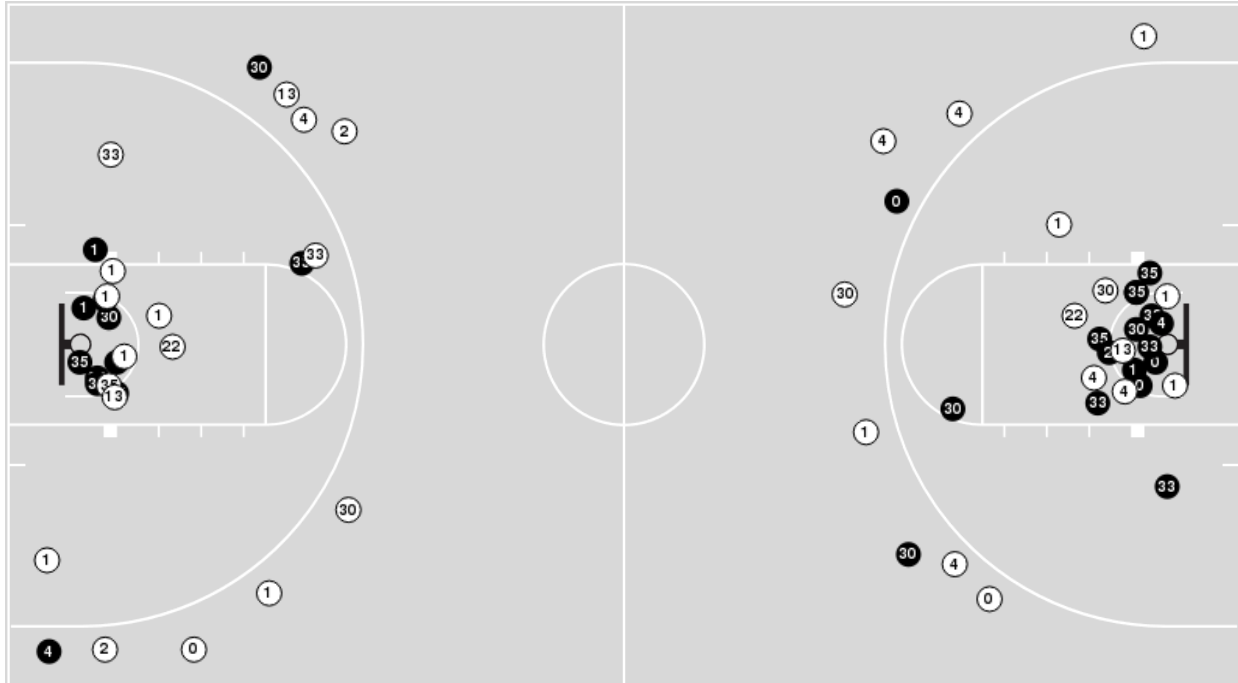
11/27/19 Lahaina Civic Center, Lahaina  
2019-20 Men's Basketball

Officials: Terry Wymer, Chris Rastatter, Keith Kimble

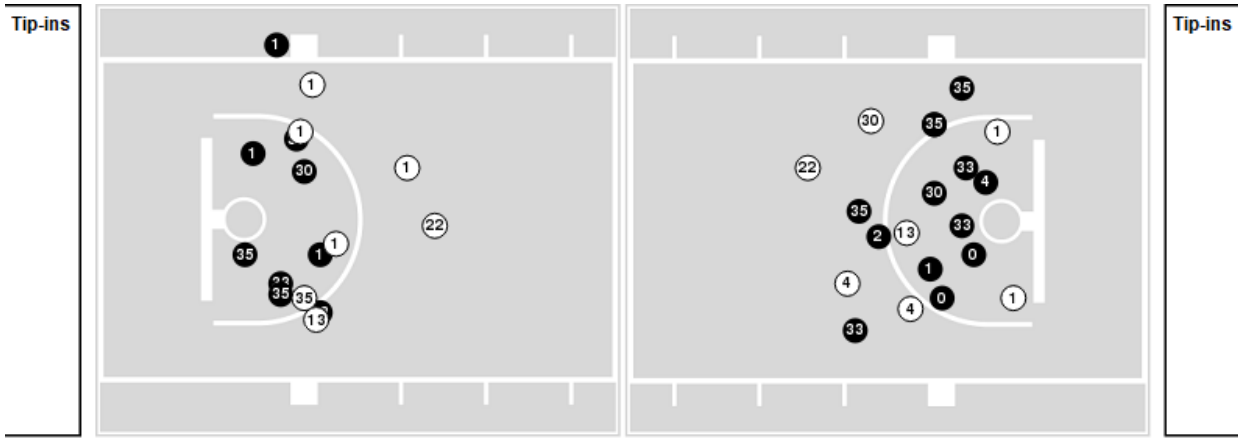
Players => 00, 1, 2, 3, 4, 5, 10, 12, 13, 20, 22, 30, 33, 35, 44 FG Types=>All Results=>All

**Kansas**

**All Field Goals**



**Blow Up Chart**



● Made ○ Missed N - Player Number

Kansas	M/A	%
Field Goals	29/61	48
2 Points	25/43	58
3 Points	4/18	22
Free Throws	9/15	60

Kansas	M/A	%
Points in the Paint	42 (21 / 35)	60
Fast Break Points	13 (7/8)	88
Second Chance Points	7 (4/10)	40
Effective FG%	51	

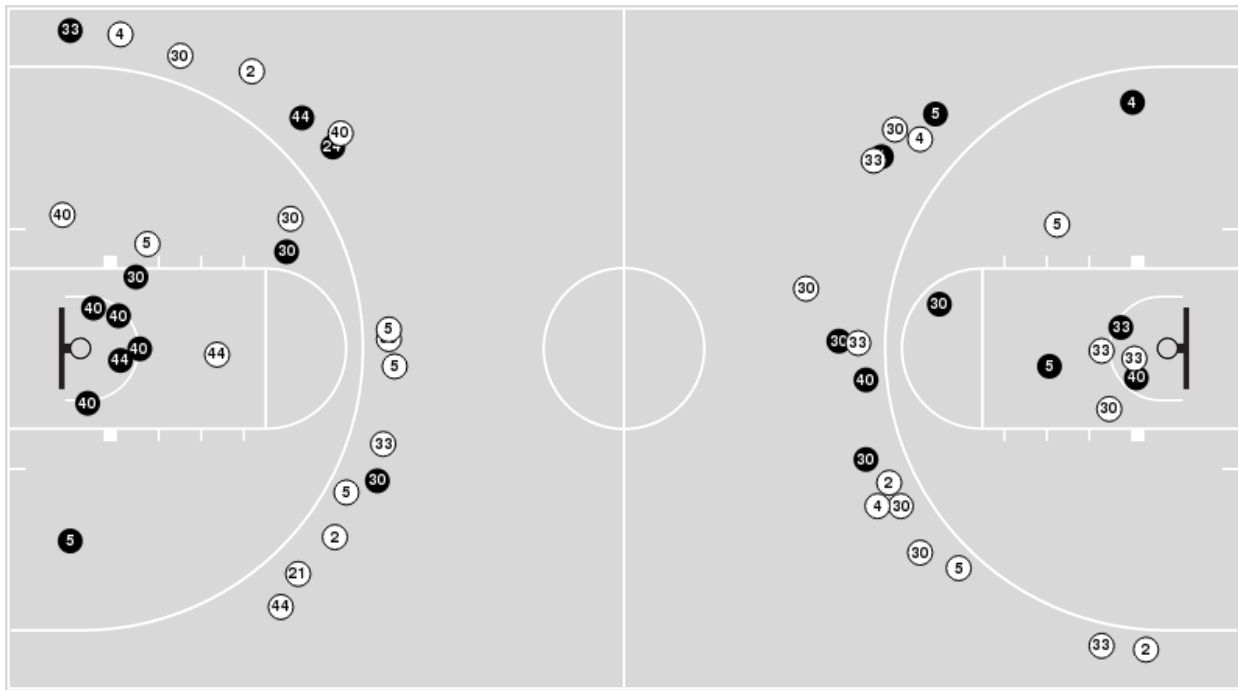




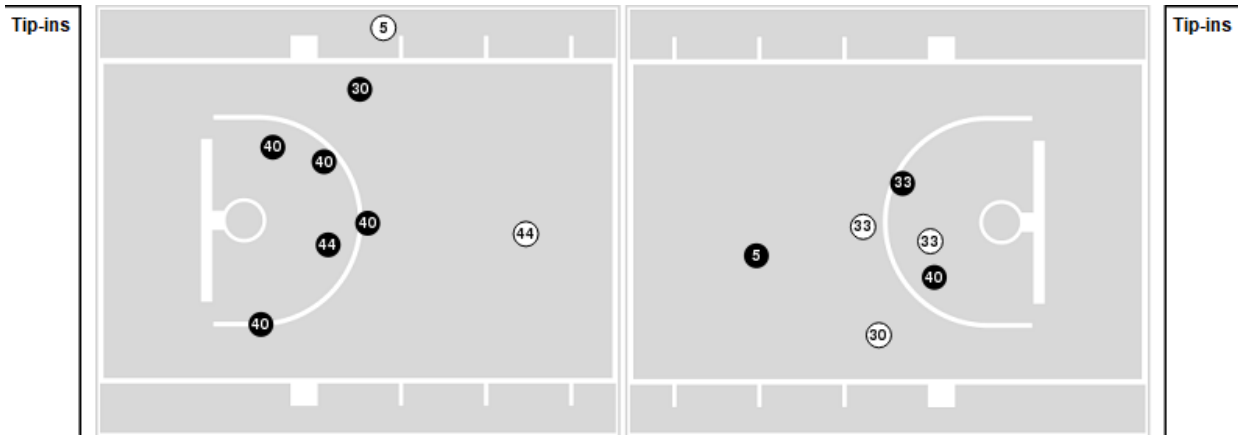
Players => 1, 2, 3, 4, 5, 10, 13, 15, 21, 23, 24, 25, 30, 33, 40, 42, 44 FG Types=>AllResults=>All

**BYU**

**All Field Goals**



**Blow Up Chart**



● Made ○ Missed N - Player Number

BYU	M/A	%
Field Goals	22/54	41
2 Points	13/21	62
3 Points	9/33	27
Free Throws	3/4	75

BYU	M/A	%
Points in the Paint	18 (9 / 13)	69
Fast Break Points	5 (2/2)	100
Second Chance Points	7 (3/5)	60
Effective FG%	49	



**Kansas at BYU**

11/27/19 Lahaina Civic Center, Lahaina  
2019-20 Men's Basketball

**Game Time:** 3:30 AM  
**Game Duration:** 1:47  
**Attendance:** 2,400

**Officials:** Terry Wymer, Chris Rastatter, Keith Kimble

**Kansas**

Lineup	Quarter On	Time On	Quarter Off	Time Off	Time on Court	Score	Score Diff	Reb	Stl	Tov	Ass	PPP
00- Garrett M/ 1- Dotson D/ 30- Agbaji O/ 33- McCormack D/ 35- Azubuike U/	1	20:00	1	14:45	05:15	8-10	-2	3	0	2	3	0.8000
00- Garrett M/ 1- Dotson D/ 4- Moss I/ 30- Agbaji O/ 35- Azubuike U/	1	14:45	1	13:50	00:55	5-0	5	2	0	0	1	2.0492
1- Dotson D/ 4- Moss I/ 13- Enaruna T/ 30- Agbaji O/ 35- Azubuike U/	1	13:50	1	12:44	01:06	0-2	-2	1	0	0	0	0.0000
00- Garrett M/ 1- Dotson D/ 4- Moss I/ 13- Enaruna T/ 33- McCormack D/	1	12:44	1	09:52	02:52	5-5	0	3	0	0	2	1.0000
00- Garrett M/ 2- Braun C/ 4- Moss I/ 13- Enaruna T/ 22- DeSousa S/	1	09:52	1	09:10	00:42	0-2	-2	1	0	0	0	0.0000
00- Garrett M/ 1- Dotson D/ 2- Braun C/ 22- DeSousa S/ 30- Agbaji O/	1	09:10	1	08:42	00:28	0-0	0	0	0	1	0	0.0000
1- Dotson D/ 2- Braun C/ 4- Moss I/ 30- Agbaji O/ 35- Azubuike U/	1	08:42	1	07:13	01:29	0-0	0	2	0	1	0	0.0000
1- Dotson D/ 4- Moss I/ 13- Enaruna T/ 30- Agbaji O/ 35- Azubuike U/	1	07:13	1	02:03	05:10	6-2	4	3	3	4	1	0.6667
1- Dotson D/ 4- Moss I/ 13- Enaruna T/ 30- Agbaji O/ 33- McCormack D/	1	02:03	1	01:18	00:45	3-3	0	0	0	0	1	3.0000
1- Dotson D/ 2- Braun C/ 13- Enaruna T/ 30- Agbaji O/ 33- McCormack D/	1	01:18	2	20:00	01:18	2-3	-1	1	0	0	0	0.6944
00- Garrett M/ 1- Dotson D/ 30- Agbaji O/ 33- McCormack D/ 35- Azubuike U/	2	20:00	2	17:15	02:45	6-4	2	1	0	2	2	1.2000
00- Garrett M/ 1- Dotson D/ 4- Moss I/ 33- McCormack D/ 35- Azubuike U/	2	17:15	2	15:24	01:51	3-0	3	5	0	1	1	1.0000
00- Garrett M/ 1- Dotson D/ 4- Moss I/ 30- Agbaji O/ 35- Azubuike U/	2	15:24	2	12:15	03:09	6-2	4	1	1	0	2	1.2605
00- Garrett M/ 1- Dotson D/ 4- Moss I/ 30- Agbaji O/ 33- McCormack D/	2	12:15	2	12:15	00:00	0-0	0	0	0	0	0	0.0000
1- Dotson D/ 4- Moss I/ 13- Enaruna T/ 30- Agbaji O/ 33- McCormack D/	2	12:15	2	09:41	02:34	4-2	2	5	0	0	0	1.3333
1- Dotson D/ 4- Moss I/ 13- Enaruna T/ 30- Agbaji O/ 35- Azubuike U/	2	09:41	2	09:41	00:23	0-0	0	0	0	0	0	0.0000
00- Garrett M/ 1- Dotson D/ 4- Moss I/ 30- Agbaji O/ 35- Azubuike U/	2	09:41	2	04:55	04:23	12-8	4	5	2	1	2	1.2295
00- Garrett M/ 1- Dotson D/ 2- Braun C/ 4- Moss I/ 33- McCormack D/	2	04:55	2	02:24	02:31	8-8	0	0	2	0	3	1.6000
1- Dotson D/ 2- Braun C/ 4- Moss I/ 22- DeSousa S/ 30- Agbaji O/	2	02:24	2	01:53	00:31	0-0	0	1	0	0	0	0.0000
2- Braun C/ 4- Moss I/ 13- Enaruna T/ 22- DeSousa S/ 30- Agbaji O/	2	01:53	2	01:15	00:38	0-2	-2	0	0	0	0	0.0000
2- Braun C/ 4- Moss I/ 13- Enaruna T/ 20- Jankovich M/ 22- DeSousa S/	2	01:15	2	00:31	00:43	3-0	3	1	1	0	0	1.2931
5- Elliott E/ 12- Teahan C/ 13- Enaruna T/ 20- Jankovich M/ 22- DeSousa S/	2	00:31	2	00:00	00:32	0-3	-3	0	0	0	0	0.0000



**Kansas at BYU**

11/27/19 Lahaina Civic Center, Lahaina  
2019-20 Men's Basketball

**Game Time:** 3:30 AM  
**Game Duration:** 1:47  
**Attendance:** 2,400

**Officials:** Terry Wymer, Chris Rastatter, Keith Kimble

**BYU**

Lineup	Quarter On	Time On	Quarter Off	Time Off	Time on Court	Score	Score Diff	Reb	Stl	Tov	Ass	PPP
4- Barcello A/ 5- Toolson J/ 30- Haws T/ 33- Nixon D/ 40- Lee K/	1	20:00	1	15:14	04:46	10-8	2	3	2	2	3	1.1111
2- Seljaas Z/ 4- Barcello A/ 5- Toolson J/ 30- Haws T/ 33- Nixon D/	1	15:14	1	12:44	02:30	2-5	-3	3	0	1	1	0.4000
2- Seljaas Z/ 5- Toolson J/ 30- Haws T/ 40- Lee K/ 44- Harding C/	1	12:44	1	09:52	02:52	5-5	0	3	0	0	0	1.2500
2- Seljaas Z/ 4- Barcello A/ 30- Haws T/ 33- Nixon D/ 44- Harding C/	1	09:52	1	07:13	02:39	2-0	2	3	0	1	0	0.4630
2- Seljaas Z/ 4- Barcello A/ 5- Toolson J/ 40- Lee K/ 44- Harding C/	1	07:13	1	05:23	01:50	0-2	-2	1	0	4	0	0.0000
5- Toolson J/ 30- Haws T/ 33- Nixon D/ 40- Lee K/ 44- Harding C/	1	05:23	1	04:13	01:10	0-2	-2	0	0	1	0	0.0000
2- Seljaas Z/ 5- Toolson J/ 30- Haws T/ 33- Nixon D/ 44- Harding C/	1	04:13	1	02:50	01:23	0-2	-2	1	1	1	0	0.0000
2- Seljaas Z/ 4- Barcello A/ 5- Toolson J/ 30- Haws T/ 33- Nixon D/	1	02:50	1	02:22	00:29	0-0	0	0	0	0	0	0.0000
2- Seljaas Z/ 4- Barcello A/ 5- Toolson J/ 30- Haws T/ 40- Lee K/	1	02:22	1	01:18	01:03	5-3	2	0	1	0	2	2.5000
2- Seljaas Z/ 4- Barcello A/ 5- Toolson J/ 13- Maughan T/ 30- Haws T/	1	01:18	2	20:00	01:18	3-2	1	2	0	0	1	1.5000
4- Barcello A/ 5- Toolson J/ 30- Haws T/ 33- Nixon D/ 40- Lee K/	2	20:00	2	17:15	02:45	4-6	-2	1	0	1	1	1.0000
2- Seljaas Z/ 4- Barcello A/ 5- Toolson J/ 30- Haws T/ 40- Lee K/	2	17:15	2	15:24	01:51	0-3	-3	1	1	0	0	0.0000
2- Seljaas Z/ 5- Toolson J/ 30- Haws T/ 40- Lee K/ 44- Harding C/	2	15:24	2	13:05	02:19	2-4	-2	3	0	2	0	0.6667
2- Seljaas Z/ 4- Barcello A/ 30- Haws T/ 33- Nixon D/ 44- Harding C/	2	13:05	2	11:28	01:37	2-4	-2	1	0	1	0	0.6667
2- Seljaas Z/ 4- Barcello A/ 5- Toolson J/ 30- Haws T/ 33- Nixon D/	2	11:28	2	09:41	01:47	0-2	-2	1	0	0	0	0.0000
4- Barcello A/ 5- Toolson J/ 33- Nixon D/ 40- Lee K/ 44- Harding C/	2	09:41	2	08:48	00:53	0-2	-2	0	0	1	0	0.0000
4- Barcello A/ 5- Toolson J/ 21- Knell T/ 40- Lee K/ 44- Harding C/	2	08:48	2	07:57	00:51	0-2	-2	1	0	0	0	0.0000
4- Barcello A/ 5- Toolson J/ 30- Haws T/ 40- Lee K/ 44- Harding C/	2	07:57	2	07:40	00:48	0-0	0	0	0	0	0	0.0000
5- Toolson J/ 21- Knell T/ 30- Haws T/ 40- Lee K/ 44- Harding C/	2	07:40	2	07:03	00:06	2-2	0	2	0	1	0	1.0000
5- Toolson J/ 30- Haws T/ 33- Nixon D/ 40- Lee K/ 44- Harding C/	2	07:03	2	02:24	04:39	14-14	0	3	0	3	5	1.4831
3- Nield B/ 13- Maughan T/ 33- Nixon D/ 40- Lee K/ 44- Harding C/	2	02:24	2	01:15	01:09	2-0	2	1	0	0	0	2.0000
2- Seljaas Z/ 3- Nield B/ 13- Maughan T/ 21- Knell T/ 44- Harding C/	2	01:15	2	00:31	00:43	0-3	-3	1	0	1	0	0.0000
3- Nield B/ 13- Maughan T/ 15- Pearson C/ 21- Knell T/ 24- Troy E/	2	00:31	2	00:00	00:32	3-0	3	1	0	0	1	3.0000



**Kansas at BYU**

11/27/19 Lahaina Civic Center, Lahaina  
2019-20 Men's Basketball

**Game Time:** 3:30 AM  
**Game Duration:** 1:47  
**Attendance:** 2,400

**Officials:** Terry Wymer, Chris Rastatter, Keith Kimble

**Kansas**

Lineup	Time	Score	Score Diff	Pts/Min	Reb	Stl	Tov	Ass	PPP
00- Garrett M/ 1- Dotson D/ 4- Moss I/ 30- Agbaji O/ 35- Azubuike U/	08:27	23-10	13	2.7219	8	3	1	5	1.3561
00- Garrett M/ 1- Dotson D/ 30- Agbaji O/ 33- McCormack D/ 35- Azubuike U/	08:00	14-14	0	1.7500	4	0	4	5	0.9333
1- Dotson D/ 4- Moss I/ 13- Enaruna T/ 30- Agbaji O/ 35- Azubuike U/	06:39	6-4	2	0.9023	4	3	4	1	0.5455
1- Dotson D/ 4- Moss I/ 13- Enaruna T/ 30- Agbaji O/ 33- McCormack D/	03:19	7-5	2	2.1106	5	0	0	1	1.7500
00- Garrett M/ 1- Dotson D/ 4- Moss I/ 13- Enaruna T/ 33- McCormack D/	02:52	5-5	0	1.7442	3	0	0	2	1.0000
00- Garrett M/ 1- Dotson D/ 2- Braun C/ 4- Moss I/ 33- McCormack D/	02:31	8-8	0	3.1788	0	2	0	3	1.6000
00- Garrett M/ 1- Dotson D/ 4- Moss I/ 33- McCormack D/ 35- Azubuike U/	01:51	3-0	3	1.6216	5	0	1	1	1.0000
1- Dotson D/ 2- Braun C/ 4- Moss I/ 30- Agbaji O/ 35- Azubuike U/	01:29	0-0	0	0.0000	2	0	1	0	0.0000
1- Dotson D/ 2- Braun C/ 13- Enaruna T/ 30- Agbaji O/ 33- McCormack D/	01:18	2-3	-1	1.5385	1	0	0	0	0.6944
2- Braun C/ 4- Moss I/ 13- Enaruna T/ 20- Jankovich M/ 22- DeSousa S/	00:43	3-0	3	4.1860	1	1	0	0	1.2931
00- Garrett M/ 2- Braun C/ 4- Moss I/ 13- Enaruna T/ 22- DeSousa S/	00:42	0-2	-2	0.0000	1	0	0	0	0.0000
2- Braun C/ 4- Moss I/ 13- Enaruna T/ 22- DeSousa S/ 30- Agbaji O/	00:38	0-2	-2	0.0000	0	0	0	0	0.0000
5- Elliott E/ 12- Teahan C/ 13- Enaruna T/ 20- Jankovich M/ 22- DeSousa S/	00:32	0-3	-3	0.0000	0	0	0	0	0.0000
1- Dotson D/ 2- Braun C/ 4- Moss I/ 22- DeSousa S/ 30- Agbaji O/	00:31	0-0	0	0.0000	1	0	0	0	0.0000
00- Garrett M/ 1- Dotson D/ 2- Braun C/ 22- DeSousa S/ 30- Agbaji O/	00:28	0-0	0	0.0000	0	0	1	0	0.0000
00- Garrett M/ 1- Dotson D/ 4- Moss I/ 30- Agbaji O/ 33- McCormack D/	00:00	0-0	0	NaN	0	0	0	0	0.0000



**Kansas at BYU**

11/27/19 Lahaina Civic Center, Lahaina  
2019-20 Men's Basketball

**Game Time:** 3:30 AM  
**Game Duration:** 1:47  
**Attendance:** 2,400

**Officials:** Terry Wymer, Chris Rastatter, Keith Kimble

**BYU**

Lineup	Time	Score	Score Diff	Pts/Min	Reb	Stl	Tov	Ass	PPP
4- Barcello A/ 5- Toolson J/ 30- Haws T/ 33- Nixon D/ 40- Lee K/	07:31	14-14	0	1.8625	4	2	3	4	1.0769
5- Toolson J/ 30- Haws T/ 33- Nixon D/ 40- Lee K/ 44- Harding C/	05:49	14-16	-2	2.4069	3	0	4	5	1.2238
2- Seljaas Z/ 5- Toolson J/ 30- Haws T/ 40- Lee K/ 44- Harding C/	05:11	7-9	-2	1.3505	6	0	2	0	1.0000
2- Seljaas Z/ 4- Barcello A/ 5- Toolson J/ 30- Haws T/ 33- Nixon D/	04:46	2-7	-5	0.4196	4	0	1	1	0.2500
2- Seljaas Z/ 4- Barcello A/ 30- Haws T/ 33- Nixon D/ 44- Harding C/	04:16	4-4	0	0.9375	4	0	2	0	0.5464
2- Seljaas Z/ 4- Barcello A/ 5- Toolson J/ 30- Haws T/ 40- Lee K/	02:54	5-6	-1	1.7241	1	2	0	2	0.8333
2- Seljaas Z/ 4- Barcello A/ 5- Toolson J/ 40- Lee K/ 44- Harding C/	01:50	0-2	-2	0.0000	1	0	4	0	0.0000
2- Seljaas Z/ 5- Toolson J/ 30- Haws T/ 33- Nixon D/ 44- Harding C/	01:23	0-2	-2	0.0000	1	1	1	0	0.0000
2- Seljaas Z/ 4- Barcello A/ 5- Toolson J/ 13- Maughan T/ 30- Haws T/	01:18	3-2	1	2.3077	2	0	0	1	1.5000
3- Nield B/ 13- Maughan T/ 33- Nixon D/ 40- Lee K/ 44- Harding C/	01:09	2-0	2	1.7391	1	0	0	0	2.0000
4- Barcello A/ 5- Toolson J/ 33- Nixon D/ 40- Lee K/ 44- Harding C/	00:53	0-2	-2	0.0000	0	0	1	0	0.0000
4- Barcello A/ 5- Toolson J/ 21- Knell T/ 40- Lee K/ 44- Harding C/	00:51	0-2	-2	0.0000	1	0	0	0	0.0000
4- Barcello A/ 5- Toolson J/ 30- Haws T/ 40- Lee K/ 44- Harding C/	00:48	0-0	0	0.0000	0	0	0	0	0.0000
2- Seljaas Z/ 3- Nield B/ 13- Maughan T/ 21- Knell T/ 44- Harding C/	00:43	0-3	-3	0.0000	1	0	1	0	0.0000
3- Nield B/ 13- Maughan T/ 15- Pearson C/ 21- Knell T/ 24- Troy E/	00:32	3-0	3	5.6250	1	0	0	1	3.0000
5- Toolson J/ 21- Knell T/ 30- Haws T/ 40- Lee K/ 44- Harding C/	00:06	2-2	0	20.0000	2	0	1	0	1.0000