



Officials: Kipp Kissinger, Ray Natili, Keith Kimble

Oklahoma St. - 58

Record: 14-14 (4-11)

NO.	Name	Min	FG	3P	FT	Rebounds			Fouls		TP	AS	TO	ST	Blocks		+/-
			M-A	M-A	M-A	OR	DR	TOT	PF	FD					BS	BA	
12	Cameron McGriff	F 31:12	6-14	1-3	3-4	3	2	5	4	3	16	0	3	0	1	0	-23
14	Yor Anei	F 28:45	3-9	0-0	1-2	2	3	5	1	2	7	2	2	1	4	0	-20
1	Jonathan Laurent	G 24:33	0-2	0-0	0-0	1	7	8	2	2	0	1	2	0	1	2	-19
13	Isaac Likekele	G 34:54	3-8	0-0	5-7	0	6	6	3	5	11	0	3	1	2	2	-28
21	Lindy Waters, III	G 32:08	4-7	1-3	2-2	0	2	2	3	1	11	1	1	1	0	0	-31
4	Thomas Dziagwa	10:38	1-6	1-6	0-0	0	0	0	1	0	3	0	0	0	0	0	-13
22	Kalib Boone	11:10	1-3	0-0	4-4	0	1	1	4	2	6	2	0	1	0	0	-4
0	Avery Anderson, III	11:54	1-2	0-0	0-0	0	1	1	1	0	2	1	2	0	0	0	-6
20	Keylan Boone	07:18	1-1	0-0	0-0	0	1	1	0	0	2	0	0	0	1	0	5
35	Hidde Roessink	02:28	0-0	0-0	0-0	0	0	0	0	0	0	0	0	0	0	0	6
31	Dee Mitchell	05:00	0-0	0-0	0-0	0	0	0	0	0	0	1	0	0	0	0	8
Team						1	2	3			0		0				
<b>Totals</b>			20-52	3-12	15-19	7	25	32	19	15	58	8	13	4	9	4	-25

Shooting By Period		
1st FG%	10-31	32.3%
3PT%	2-9	22.2%
FT%	3-5	60%
2nd FG%	10-21	47.6%
3PT%	1-3	33.3%
FT%	12-14	85.7%
GM FG%	20-52	38.5%
3PT%	3-12	25.0%
FT%	15-19	78.9%

Dead Ball Rebounds: 3, 0

Technical Fouls: McGriff 2<sup>nd</sup> 14:37

Kansas - 83

Record: 25-3 (14-1)

NO.	Name	Min	FG	3P	FT	Rebounds			Fouls		TP	AS	TO	ST	Blocks		+/-
			M-A	M-A	M-A	OR	DR	TOT	PF	FD					BS	BA	
35	Udoka Azubuike	C 26:33	6-7	0-0	7-8	8	8	16	1	9	19	2	2	0	3	0	27
0	Marcus Garrett	G 31:14	2-8	0-3	1-1	1	2	3	2	2	5	7	1	1	0	0	24
1	Devon Dotson	G 27:24	3-12	1-4	4-5	0	5	5	2	2	11	4	2	1	0	4	30
4	Isaiah Moss	G 27:33	3-7	3-6	0-0	0	4	4	2	1	9	1	0	1	0	0	29
30	Ochai Agbaji	G 27:21	5-9	2-6	3-3	0	0	0	1	2	15	1	1	0	0	1	21
2	Christian Braun	22:08	3-5	3-4	1-1	0	2	2	2	1	10	0	1	0	0	0	9
13	Tristan Enaruna	16:49	1-4	1-3	1-2	1	1	2	1	1	4	0	0	0	0	1	-1
33	David McCormack	15:50	5-10	0-0	0-0	2	2	4	4	0	10	1	2	0	1	2	0
12	Chris Teahan	02:34	0-1	0-1	0-0	0	0	0	0	0	0	0	0	0	0	0	-7
20	Michael Jankovich	02:34	0-1	0-1	0-0	1	0	1	0	0	0	0	1	0	0	1	-7
Team						0	1	1			0		0				
<b>Totals</b>			28-64	10-28	17-20	13	25	38	15	18	83	16	10	3	4	9	25

Shooting By Period		
1st FG%	11-32	34.4%
3PT%	5-18	27.8%
FT%	8-9	88.9%
2nd FG%	17-32	53.1%
3PT%	5-10	50.0%
FT%	9-11	81.8%
GM FG%	28-64	43.8%
3PT%	10-28	35.7%
FT%	17-20	85.0%

Dead Ball Rebounds: 1, 1

Technical Fouls: NONE

	OSU	KAN	Points from		Period by Period Scoring				
Biggest lead	3 (1 <sup>st</sup> 16:56)	36 (2 <sup>nd</sup> 4:37)	OSU	KAN	1st	2nd	TOT		
Best Scoring Run	11 (2 <sup>nd</sup> 1:11)	11 (2 <sup>nd</sup> 14:06)	15	19	OSU	25	33	58	
Lead Changes	5		Paint	24	28	KAN	35	48	83
Times Tied	2		Second Chance	6	14				
Time with Lead	02:27	36:09	Fast Breaks	8	11				
			Bench	13	24				



**Period 1**

**Quarter Starters:**

<b>KAN</b>	0 Garrett M	1 Dotson D	4 Moss I	30 Agbaji O	35 Azubuike U
<b>OSU</b>	1 Laurent J	12 McGriff C	13 Likekele I	14 Anei Y	21 Waters, III L

Game Time	KAN	Score	Diff	OSU
20:00	35 AZUBUIKE U jumpball won			14 ANEI Y jumpball lost
19:44	1 DOTSON D 2pt FG in the paint, layup blocked			
19:44				14 ANEI Y block (1)
19:41				13 LIKEKELE I defensive rebound (1)
19:30				14 ANEI Y 2pt FG outside the paint, step back jump shot missed
19:27				12 MCGRIFF C offensive rebound (1)
19:15		<b>0-2</b>	<b>-2</b>	21 WATERS, III L 2pt FG outside the paint, jump shot made (2)
18:51	30 AGBAJI O 3pt FG , jump shot made (3)	<b>3-2</b>	<b>1</b>	
18:51	35 AZUBUIKE U assist (1)			
18:22				1 LAURENT J 2pt FG outside the paint, jump shot blocked
18:22	35 AZUBUIKE U block (1)			
18:18	35 AZUBUIKE U defensive rebound (1)			
18:14	30 AGBAJI O 3pt FG , jump shot missed			
18:11				13 LIKEKELE I defensive rebound (2)
17:51				12 MCGRIFF C turnover travel (1)
17:26	4 MOSS I 3pt FG , jump shot missed			
17:23				13 LIKEKELE I defensive rebound (3)
17:20				13 LIKEKELE I 2pt FG in the paint, layup missed
17:17	4 MOSS I defensive rebound (1)			
17:14	1 DOTSON D 2pt FG in the paint, layup missed			
17:14				1 LAURENT J defensive rebound (1)
17:13				13 LIKEKELE I 2pt FG in the paint, layup blocked
17:13	35 AZUBUIKE U block (2)			
17:10				offensive rebound (6)
16:57		<b>3-4</b>	<b>-1</b>	12 MCGRIFF C 2pt FG outside the paint, jump shot made (2)
16:57	1 DOTSON D 3pt FG , jump shot missed			
16:57	0 GARRETT M offensive rebound (1)			
16:57	30 AGBAJI O turnover bad pass (1)			13 LIKEKELE I steal (1)
16:56		<b>3-6</b>	<b>-3</b>	13 LIKEKELE I 2pt FG fast break in the paint, layup made (2)
16:52	30 AGBAJI O foul shooting (1 - 1)			13 LIKEKELE I foul drawn (1)
16:37				13 LIKEKELE I free throw fast break 1 - 1 missed
16:36	0 GARRETT M defensive rebound (2)			
15:55	0 GARRETT M 3pt FG , jump shot missed			
15:52				1 LAURENT J defensive rebound (2)
15:48				21 WATERS, III L 3pt FG , jump shot missed
15:45	4 MOSS I defensive rebound (2)			
15:36	4 MOSS I 3pt FG , jump shot made (3)	<b>6-6</b>	<b>0</b>	
15:36	30 AGBAJI O assist (1)			
15:20				12 MCGRIFF C 2pt FG in the paint, layup missed
15:17	4 MOSS I defensive rebound (3)			
15:12	30 AGBAJI O 3pt FG , jump shot missed			
15:09				1 LAURENT J defensive rebound (3)
14:57		<b>6-8</b>	<b>-2</b>	12 MCGRIFF C 2pt FG in the paint, layup made (4)



**Oklahoma St. at Kansas**

02/24/20 Allen Fieldhouse, Lawrence  
2019-20 Men's Basketball

**Game Time:** 8:00 PM  
**Game Duration:** 2:00  
**Attendance:** 16,300

**Officials:** Kipp Kissinger, Ray Natili, Keith Kimble

Game Time	KAN	Score	Diff	OSU
14:30	1 DOTSON D 3pt FG , jump shot made (3)	<b>9-8</b>	<b>1</b>	
14:30	0 GARRETT M assist (1)			
14:13				12 MCGRIFF C 2pt FG outside the paint, jump shot missed
14:11				14 ANEI Y offensive rebound (1)
14:10				14 ANEI Y 2pt FG in the paint, layup missed
14:08	35 AZUBUIKE U defensive rebound (2)			
13:54	4 MOSS I 3pt FG , jump shot missed			
13:51				14 ANEI Y defensive rebound (2)
13:21				12 MCGRIFF C 3pt FG , jump shot missed
13:18	35 AZUBUIKE U defensive rebound (3)			
13:12	1 DOTSON D 2pt FG in the paint, layup blocked			
13:12				13 LIKEKELE I block (1)
13:08				1 LAURENT J defensive rebound (4)
12:53				1 LAURENT J turnover bad pass (1)
12:53	Timeout media			
12:53	0 GARRETT M substitution out			
12:53	30 AGBAJI O substitution out			
12:53	35 AZUBUIKE U substitution out			
12:53	2 BRAUN C substitution in			
12:53	13 ENARUNA T substitution in			
12:53	33 MCCORMACK D substitution in			
12:53				1 LAURENT J substitution out
12:53				14 ANEI Y substitution out
12:53				4 DZIAGWA T substitution in
12:53				22 BOONE K substitution in
12:43	33 MCCORMACK D turnover bad pass (1)			22 BOONE K steal (1)
12:40	33 MCCORMACK D foul shooting (1 - 2)			13 LIKEKELE I foul drawn (2)
12:40		<b>9-9</b>	<b>0</b>	13 LIKEKELE I free throw fast break 1 - 2 made (3)
12:40		<b>9-10</b>	<b>-1</b>	13 LIKEKELE I free throw fast break 2 - 2 made (4)
12:25	2 BRAUN C 3pt FG , jump shot made (3)	<b>12-10</b>	<b>2</b>	
12:05				22 BOONE K 2pt FG outside the paint, jump shot missed
12:02				12 MCGRIFF C offensive rebound (2)
12:00				4 DZIAGWA T 3pt FG , jump shot missed
11:59	defensive dead ball rebound (1)			
11:59	Timeout media			
11:59	1 DOTSON D substitution out			
11:59	0 GARRETT M substitution in			
11:43	0 GARRETT M 2pt FG in the paint, layup missed			
11:38	33 MCCORMACK D offensive rebound (1)			
11:38	33 MCCORMACK D 2pt FG in the paint, dunk, made (2)	<b>14-10</b>	<b>4</b>	
11:21				4 DZIAGWA T 3pt FG , jump shot missed
11:17	13 ENARUNA T defensive rebound (1)			
11:08	13 ENARUNA T foul drawn (1)			12 MCGRIFF C foul shooting (1 - 1)
11:08	13 ENARUNA T free throw 1 - 2 made (1)	<b>15-10</b>	<b>5</b>	
11:08	4 MOSS I substitution out			
11:08	33 MCCORMACK D substitution out			
11:08	30 AGBAJI O substitution in			
11:08	35 AZUBUIKE U substitution in			
11:07	13 ENARUNA T free throw 2 - 2 missed			



Game Time	KAN	Score	Diff	OSU
11:06				21 WATERS, III L defensive rebound (1)
10:40				4 DZIAGWA T 3pt FG , jump shot missed
10:37	35 AZUBUIKE U defensive rebound (4)			
10:30	35 AZUBUIKE U 2pt FG in the paint, dunk, missed			
10:28	35 AZUBUIKE U offensive rebound (5)			
10:28	35 AZUBUIKE U foul drawn (1)			22 BOONE K foul personal (1 - 2)
10:28				4 DZIAGWA T substitution out
10:28				0 ANDERSON, III A substitution in
10:19	35 AZUBUIKE U foul drawn (2)			22 BOONE K foul shooting (2 - 3)
10:19	35 AZUBUIKE U free throw 1 - 2 made (1)	<b>16-10</b>	<b>6</b>	
10:19				22 BOONE K substitution out
10:19				14 ANEI Y substitution in
10:19	35 AZUBUIKE U free throw 2 - 2 made (2)	<b>17-10</b>	<b>7</b>	
09:55		<b>17-12</b>	<b>5</b>	21 WATERS, III L 2pt FG outside the paint, jump shot made (4)
09:30	0 GARRETT M 3pt FG , jump shot missed			
09:26				14 ANEI Y defensive rebound (3)
09:03				13 LIKEKELE I 2pt FG in the paint, layup missed
08:55				14 ANEI Y offensive rebound (4)
08:55		<b>17-14</b>	<b>3</b>	14 ANEI Y 2pt FG in the paint, layup made (2)
08:45	35 AZUBUIKE U foul drawn (3)			21 WATERS, III L foul shooting (1 - 4)
08:45	35 AZUBUIKE U free throw 1 - 2 made (3)	<b>18-14</b>	<b>4</b>	
08:45	13 ENARUNA T substitution out			
08:45	1 DOTSON D substitution in			
08:45				12 MCGRUFF C substitution out
08:45				14 ANEI Y substitution out
08:45				1 LAURENT J substitution in
08:45				20 BOONE K substitution in
08:45	35 AZUBUIKE U free throw 2 - 2 made (4)	<b>19-14</b>	<b>5</b>	
08:40				21 WATERS, III L substitution out
08:40				14 ANEI Y substitution in
08:37				0 ANDERSON, III A 2pt FG outside the paint, jump shot missed
08:33	1 DOTSON D defensive rebound (1)			
08:09	1 DOTSON D 3pt FG , jump shot missed			
08:06	35 AZUBUIKE U offensive rebound (6)			
08:01	35 AZUBUIKE U 2pt FG in the paint, jump shot made (6)	<b>21-14</b>	<b>7</b>	
07:44	35 AZUBUIKE U foul shooting (1 - 3)			14 ANEI Y foul drawn (1)
07:44				Timeout media
07:44	0 GARRETT M substitution out			
07:44	35 AZUBUIKE U substitution out			
07:44	4 MOSS I substitution in			
07:44	33 MCCORMACK D substitution in			
07:44				13 LIKEKELE I substitution out
07:44				21 WATERS, III L substitution in
07:44				14 ANEI Y free throw 1 - 2 missed
07:44				offensive dead ball rebound (1)
07:44		<b>21-15</b>	<b>6</b>	14 ANEI Y free throw 2 - 2 made (3)
07:25	33 MCCORMACK D 2pt FG in the paint, layup made (4)	<b>23-15</b>	<b>8</b>	
07:25	0 GARRETT M assist (2)			
07:11	2 BRAUN C substitution out			



**Oklahoma St. at Kansas**

02/24/20 Allen Fieldhouse, Lawrence  
2019-20 Men's Basketball

**Game Time:** 8:00 PM  
**Game Duration:** 2:00  
**Attendance:** 16,300

**Officials:** Kipp Kissinger, Ray Natili, Keith Kimble

Game Time	KAN	Score	Diff	OSU
07:11	0 GARRETT M substitution in			
06:57				14 ANEI Y 2pt FG outside the paint, jump shot missed
06:53	1 DOTSON D defensive rebound (2)			
06:48	1 DOTSON D turnover bad pass (1)			
06:48				0 ANDERSON, III A substitution out
06:48				20 BOONE K substitution out
06:48				12 MCGRUFF C substitution in
06:48				13 LIKEKELE I substitution in
06:24		<b>23-17</b>	<b>6</b>	14 ANEI Y 2pt FG in the paint, layup made (5)
06:24				1 LAURENT J assist (1)
06:08	33 MCCORMACK D 2pt FG outside the paint, jump shot made (6)	<b>25-17</b>	<b>8</b>	
06:08	1 DOTSON D assist (1)			
05:58				13 LIKEKELE I 2pt FG in the paint, layup blocked
05:58	33 MCCORMACK D block (1)			
05:54	4 MOSS I defensive rebound (4)			
05:52	30 AGBAJI O 2pt FG fast break in the paint, alleyoop made (5)	<b>27-17</b>	<b>10</b>	
05:52	1 DOTSON D assist (2)			
05:47				Timeout 30 Sec
05:30	0 GARRETT M foul personal (1 - 4)			13 LIKEKELE I foul drawn (3)
05:21				21 WATERS, III L 3pt FG , jump shot missed
05:19	defensive rebound (17)			
05:19				21 WATERS, III L substitution out
05:19				4 DZIAGWA T substitution in
05:10	1 DOTSON D 2pt FG in the paint, layup blocked			
05:10				14 ANEI Y block (2)
05:07	33 MCCORMACK D offensive rebound (2)			
04:48	33 MCCORMACK D 2pt FG in the paint, layup blocked			
04:48				14 ANEI Y block (3)
04:48				14 ANEI Y defensive rebound (5)
04:41		<b>27-19</b>	<b>8</b>	12 MCGRUFF C 2pt FG in the paint, dunk, made (6)
04:41				14 ANEI Y assist (1)
04:29	1 DOTSON D 2pt FG in the paint, jump shot missed			
04:28				defensive rebound (17)
04:28	1 DOTSON D substitution out			
04:28	30 AGBAJI O substitution out			
04:28	33 MCCORMACK D substitution out			
04:28	2 BRAUN C substitution in			
04:28	13 ENARUNA T substitution in			
04:28	35 AZUBUIKE U substitution in			
04:06				12 MCGRUFF C 2pt FG in the paint, layup missed
04:03	2 BRAUN C defensive rebound (1)			
04:01	4 MOSS I 3pt FG fast break, jump shot made (6)	<b>30-19</b>	<b>11</b>	
04:01	0 GARRETT M assist (3)			
03:46				Timeout media
03:46				1 LAURENT J substitution out
03:46				21 WATERS, III L substitution in
03:30				12 MCGRUFF C 2pt FG outside the paint, jump shot missed
03:27	35 AZUBUIKE U defensive rebound (7)			



Game Time	KAN	Score	Diff	OSU
03:00	4 MOSS I 3pt FG , jump shot missed			
02:59	35 AZUBUIKE U offensive rebound (8)			
02:59	35 AZUBUIKE U foul drawn (4)			13 LIKEKELE I foul personal (1 - 5)
02:51	13 ENARUNA T 3pt FG , jump shot missed			
02:50	35 AZUBUIKE U offensive rebound (9)			
02:50	35 AZUBUIKE U foul drawn (5)			14 ANEI Y foul personal (1 - 6)
02:44	2 BRAUN C 3pt FG , jump shot missed			
02:40				defensive rebound (18)
02:27		<b>30-22</b>	<b>8</b>	4 DZIAGWA T 3pt FG , jump shot made (3)
02:27				21 WATERS, III L assist (1)
02:14	2 BRAUN C foul drawn (1)			12 MCGRIFF C foul personal (2 - 7)
02:14	13 ENARUNA T substitution out			
02:14	30 AGBAJI O substitution in			
02:14	2 BRAUN C 1&1 free throw 1 made (4)	<b>31-22</b>	<b>9</b>	
02:14	35 AZUBUIKE U turnover lane violation (1)			
02:14	2 BRAUN C substitution out			
02:14	1 DOTSON D substitution in			
02:14				12 MCGRIFF C substitution out
02:14				1 LAURENT J substitution in
02:02		<b>31-25</b>	<b>6</b>	21 WATERS, III L 3pt FG , jump shot made (7)
02:02	Timeout 30 Sec			
01:45	35 AZUBUIKE U 2pt FG in the paint, dunk, made (8)	<b>33-25</b>	<b>8</b>	
01:45	0 GARRETT M assist (4)			
01:34	0 GARRETT M foul personal (2 - 5)			1 LAURENT J foul drawn (1)
01:34	0 GARRETT M substitution out			
01:34	2 BRAUN C substitution in			
01:18				4 DZIAGWA T 3pt FG , jump shot missed
01:15	35 AZUBUIKE U defensive rebound (10)			
01:08	30 AGBAJI O foul drawn (1)			21 WATERS, III L foul personal (2 - 8)
01:08				4 DZIAGWA T substitution out
01:08				0 ANDERSON, III A substitution in
01:08	30 AGBAJI O 1&1 free throw 1 made (6)	<b>34-25</b>	<b>9</b>	
01:08	30 AGBAJI O 1&1 free throw 2 made (7)	<b>35-25</b>	<b>10</b>	
00:35				21 WATERS, III L turnover (1)
00:05	30 AGBAJI O 3pt FG , jump shot missed			
00:02	35 AZUBUIKE U offensive rebound (11)			
00:02				21 WATERS, III L substitution out
00:02				35 ROESSINK H substitution in
00:01	30 AGBAJI O 3pt FG , jump shot blocked			
00:01				13 LIKEKELE I block (2)
00:00				1 LAURENT J defensive rebound (5)
<b>END OF PERIOD</b>				
<b>KAN 35-25 OSU</b>				



**Oklahoma St. at Kansas**

02/24/20 Allen Fieldhouse, Lawrence  
2019-20 Men's Basketball

Game Time: 8:00 PM  
Game Duration: 2:00  
Attendance: 16,300

Officials: Kipp Kissinger, Ray Natili, Keith Kimble

**Oklahoma St. - 25**

NO.	Name	Min	FG			Rebounds			Fouls		TP	AS	TO	ST	Blocks		+/-
			M-A	3P	FT	OR	DR	TOT	PF	FD					BS	BA	
12	Cameron McGriff	F 15:49	3-8	0-1	0-0	2	0	2	2	0	6	0	1	0	0	0	-5
14	Yor Anei	F 17:21	2-5	0-0	1-2	2	3	5	1	1	5	1	0	0	3	0	-4
1	Jonathan Laurent	G 14:20	0-1	0-0	0-0	0	5	5	0	1	0	1	1	0	0	1	-9
13	Isaac Likekele	G 19:04	1-5	0-0	2-3	0	3	3	1	3	4	0	0	1	2	2	-9
21	Lindy Waters, III	G 17:29	3-5	1-3	0-0	0	1	1	2	0	7	1	1	0	0	0	-7
4	Thomas Dziagwa	06:36	1-5	1-5	0-0	0	0	0	0	0	3	0	0	0	0	0	-2
22	Kalib Boone	02:34	0-1	0-0	0-0	0	0	0	2	0	0	0	0	1	0	0	-5
0	Avery Anderson, III	04:48	0-1	0-0	0-0	0	0	0	0	0	0	0	0	0	0	0	-5
20	Keylan Boone	01:57	0-0	0-0	0-0	0	0	0	0	0	0	0	0	0	0	0	-4
35	Hidde Roessink	00:02	0-0	0-0	0-0	0	0	0	0	0	0	0	0	0	0	0	0
Team						1	2	3			0						
<b>Totals</b>			10-31	2-9	3-5	5	14	19	8	5	25	3	3	2	5	3	-10

Shooting By Period		
1 <sup>st</sup> FG%	10-31	32.3%
3PT%	2-9	22.2%
FT%	3-5	60%
GM FG%	10-31	32.3%
3PT%	2-9	22.2%
FT%	3-5	60.0%

Dead Ball Rebounds: 1, 0

Technical Fouls::NONE

**Kansas - 35**

NO.	Name	Min	FG			Rebounds			Fouls		TP	AS	TO	ST	Blocks		+/-
			M-A	3P	FT	OR	DR	TOT	PF	FD					BS	BA	
35	Udoka Azubuike	C 14:59	2-3	0-0	4-4	5	6	11	1	5	8	1	1	0	2	0	5
0	Marcus Garrett	G 16:59	0-3	0-2	0-0	1	1	2	2	0	0	4	0	0	0	0	6
1	Devon Dotson	G 14:32	1-8	1-3	0-0	0	2	2	0	0	3	2	1	0	0	3	7
4	Isaiah Moss	G 16:36	2-5	2-5	0-0	0	4	4	0	0	6	0	0	0	0	0	8
30	Ochai Agbaji	G 16:01	2-6	1-5	2-2	0	0	0	1	1	7	1	1	0	0	1	6
2	Christian Braun	09:30	1-2	1-2	1-1	0	1	1	0	1	4	0	0	0	0	0	10
13	Tristan Enaruna	06:22	0-1	0-1	1-2	0	1	1	0	1	1	0	0	0	0	0	3
33	David McCormack	05:01	3-4	0-0	0-0	2	0	2	1	0	6	0	1	0	1	1	5
Team						0	1	1			0						
<b>Totals</b>			11-32	5-18	8-9	8	16	24	5	8	35	8	4	0	3	5	10

Shooting By Period		
1 <sup>st</sup> FG%	11-32	34.4%
3PT%	5-18	27.8%
FT%	8-9	88.9%
GM FG%	11-32	34.4%
3PT%	5-18	27.8%
FT%	8-9	88.9%

Dead Ball Rebounds: 0, 1

Technical Fouls::NONE

	OSU	KAN	Points from		Period by Period Scoring			
Biggest lead	3 (1 <sup>st</sup> 16:56)	11 (1 <sup>st</sup> 4:01)	OSU	KAN	1 <sup>st</sup>	TOT		
Best Scoring Run	4 (1 <sup>st</sup> 16:56)	8 (1 <sup>st</sup> 10:19)	9	0	OSU	25	25	
Lead Changes	5		Paint	10	10			
Times Tied	2		Second Chance	6	6	KAN	35	35
Time with Lead	02:27	16:09	Fast Breaks	4	5			
			Bench	3	11			



**Period 2**

**Quarter Starters:**

<b>KAN</b>	0 Garrett M	1 Dotson D	4 Moss I	30 Agbaji O	35 Azubuike U
<b>OSU</b>	1 Laurent J	12 McGriff C	13 Likekele I	14 Anei Y	21 Waters, III L

Game Time	KAN	Score	Diff	OSU
20:00	2 BRAUN C substitution out			
20:00	0 GARRETT M substitution in			
20:00				0 ANDERSON, III A substitution out
20:00				35 ROESSINK H substitution out
20:00				12 MCGRIFF C substitution in
20:00				21 WATERS, III L substitution in
19:48	0 GARRETT M 2pt FG in the paint, layup missed			
19:45				21 WATERS, III L defensive rebound (2)
19:36		<b>35-27</b>	<b>8</b>	21 WATERS, III L 2pt FG in the paint, layup made (9)
19:20	0 GARRETT M 3pt FG , jump shot missed			
19:17				1 LAURENT J defensive rebound (6)
19:04	4 MOSS I foul shooting (1 - 1)			13 LIKEKELE I foul drawn (4)
19:04				13 LIKEKELE I free throw 1 - 2 missed
19:04				offensive dead ball rebound (2)
19:04		<b>35-28</b>	<b>7</b>	13 LIKEKELE I free throw 2 - 2 made (5)
18:52	1 DOTSON D 2pt FG in the paint, layup blocked			
18:52				14 ANEI Y block (4)
18:48				13 LIKEKELE I defensive rebound (4)
18:42				1 LAURENT J 2pt FG in the paint, layup blocked
18:42	35 AZUBUIKE U block (3)			
18:38	1 DOTSON D defensive rebound (3)			
18:26	1 DOTSON D 3pt FG , jump shot missed			
18:23	35 AZUBUIKE U offensive rebound (12)			
18:22	35 AZUBUIKE U 2pt FG in the paint, dunk, made (10)	<b>37-28</b>	<b>9</b>	
17:57				14 ANEI Y turnover travel (1)
17:37	30 AGBAJI O 2pt FG outside the paint, jump shot made (9)	<b>39-28</b>	<b>11</b>	
17:37	30 AGBAJI O foul drawn (2)			1 LAURENT J foul shooting (1 - 1)
17:37	30 AGBAJI O free throw 1 - 1 made (10)	<b>40-28</b>	<b>12</b>	
17:05		<b>40-30</b>	<b>10</b>	13 LIKEKELE I 2pt FG in the paint, layup made (7)
17:05				14 ANEI Y assist (2)
16:43	35 AZUBUIKE U foul drawn (6)			1 LAURENT J foul personal (2 - 2)
16:27	30 AGBAJI O 3pt FG , jump shot made (13)	<b>43-30</b>	<b>13</b>	
16:01				14 ANEI Y 2pt FG in the paint, hook shot missed
15:58				1 LAURENT J offensive rebound (7)
15:57	4 MOSS I steal (1)			1 LAURENT J turnover lost ball (2)
15:55	4 MOSS I foul drawn (1)			21 WATERS, III L foul personal (3 - 3)
15:55				Timeout media
15:55				1 LAURENT J substitution out
15:55				4 DZIAGWA T substitution in
15:40	0 GARRETT M turnover lost ball (1)			21 WATERS, III L steal (1)
15:32	0 GARRETT M foul drawn (1)			13 LIKEKELE I foul offensive (2 - 4)
15:32				13 LIKEKELE I turnover offensive (1)
15:07	4 MOSS I 3pt FG , jump shot made (9)	<b>46-30</b>	<b>16</b>	





**Oklahoma St. at Kansas**

02/24/20 Allen Fieldhouse, Lawrence  
2019-20 Men's Basketball

**Game Time:** 8:00 PM  
**Game Duration:** 2:00  
**Attendance:** 16,300

**Officials:** Kipp Kissinger, Ray Natili, Keith Kimble

Game Time	KAN	Score	Diff	OSU
15:07	0 GARRETT M assist (5)			
14:39				21 WATERS, III L 2pt FG outside the paint, jump shot missed
14:37				12 MCGRIFF C offensive rebound (3)
14:37	1 DOTSON D foul personal (1 - 2)			12 MCGRIFF C foul drawn (1)
14:37				12 MCGRIFF C foul class A technical (3 - 5)
14:37				12 MCGRIFF C turnover offensive (2)
14:37	1 DOTSON D free throw 1 - 2 made (4)	<b>47-30</b>	<b>17</b>	
14:37	1 DOTSON D free throw 2 - 2 made (5)	<b>48-30</b>	<b>18</b>	
14:37				12 MCGRIFF C turnover (3)
14:37	35 AZUBUIKE U turnover bad pass (2)			
14:37	1 DOTSON D steal (1)			13 LIKEKELE I turnover lost ball (2)
14:36	1 DOTSON D 2pt FG fast break in the paint, layup made (7)	<b>50-30</b>	<b>20</b>	
14:36	0 GARRETT M assist (6)			
14:31	1 DOTSON D foul drawn (1)			4 DZIAGWA T foul shooting (1 - 6)
14:06	1 DOTSON D free throw fast break 1 - 1 made (8)	<b>51-30</b>	<b>21</b>	
14:04				4 DZIAGWA T substitution out
14:04				14 ANEI Y substitution out
14:04				0 ANDERSON, III A substitution in
14:04				22 BOONE K substitution in
13:53		<b>51-32</b>	<b>19</b>	12 MCGRIFF C 2pt FG in the paint, step back jump shot made (8)
13:53				22 BOONE K assist (1)
13:52				Timeout 30 Sec
13:38	30 AGBAJI O 2pt FG outside the paint, jump shot made (15)	<b>53-32</b>	<b>21</b>	
13:16				0 ANDERSON, III A turnover bad pass (1)
12:59	1 DOTSON D 2pt FG in the paint, layup made (10)	<b>55-32</b>	<b>23</b>	
12:45	0 GARRETT M steal (1)			0 ANDERSON, III A turnover bad pass (2)
12:40	0 GARRETT M 2pt FG fast break in the paint, layup made (2)	<b>57-32</b>	<b>25</b>	
12:38	0 GARRETT M foul drawn (2)			12 MCGRIFF C foul shooting (4 - 7)
12:38				12 MCGRIFF C substitution out
12:38				0 ANDERSON, III A substitution out
12:38				1 LAURENT J substitution in
12:38				4 DZIAGWA T substitution in
12:38	0 GARRETT M free throw fast break 1 - 1 made (3)	<b>58-32</b>	<b>26</b>	
12:38	0 GARRETT M substitution out			
12:38	2 BRAUN C substitution in			
12:25				13 LIKEKELE I 2pt FG in the paint, jump shot missed
12:22	35 AZUBUIKE U defensive rebound (13)			
12:05	35 AZUBUIKE U 2pt FG in the paint, alleyoop made (12)	<b>60-32</b>	<b>28</b>	
12:05	4 MOSS I assist (1)			
11:50	4 MOSS I foul shooting (2 - 3)			22 BOONE K foul drawn (1)
11:50	Timeout media			
11:50	1 DOTSON D substitution out			
11:50	0 GARRETT M substitution in			
11:50		<b>60-33</b>	<b>27</b>	22 BOONE K free throw 1 - 2 made (1)
11:50		<b>60-34</b>	<b>26</b>	22 BOONE K free throw 2 - 2 made (2)
11:27	4 MOSS I 2pt FG in the paint, layup missed			
11:24	35 AZUBUIKE U offensive rebound (14)			
11:24	35 AZUBUIKE U 2pt FG in the paint, layup made (14)	<b>62-34</b>	<b>28</b>	



**Oklahoma St. at Kansas**

02/24/20 Allen Fieldhouse, Lawrence  
2019-20 Men's Basketball

**Game Time:** 8:00 PM  
**Game Duration:** 2:00  
**Attendance:** 16,300

**Officials:** Kipp Kissinger, Ray Natili, Keith Kimble

Game Time	KAN	Score	Diff	OSU
11:24	35 AZUBUIKE U foul drawn (7)			22 BOONE K foul shooting (3 - 8)
11:24	35 AZUBUIKE U free throw 1 - 1 made (15)	<b>63-34</b>	<b>29</b>	
11:10				4 DZIAGWA T 3pt FG , jump shot missed
11:07	2 BRAUN C defensive rebound (2)			
10:49	35 AZUBUIKE U foul drawn (8)			22 BOONE K foul shooting (4 - 9)
10:49	35 AZUBUIKE U free throw 1 - 2 missed			
10:49	offensive dead ball rebound (2)			
10:49				22 BOONE K substitution out
10:49				14 ANEI Y substitution in
10:49	35 AZUBUIKE U free throw 2 - 2 made (16)	<b>64-34</b>	<b>30</b>	
10:49	35 AZUBUIKE U substitution out			
10:49	33 MCCORMACK D substitution in			
10:27	2 BRAUN C foul shooting (1 - 4)			21 WATERS, III L foul drawn (1)
10:27		<b>64-35</b>	<b>29</b>	21 WATERS, III L free throw 1 - 2 made (10)
10:27	30 AGBAJI O substitution out			
10:27	13 ENARUNA T substitution in			
10:27		<b>64-36</b>	<b>28</b>	21 WATERS, III L free throw 2 - 2 made (11)
10:27				4 DZIAGWA T substitution out
10:27				12 MCGRUFF C substitution in
10:13	0 GARRETT M 2pt FG in the paint, turnaround jump shot made (5)	<b>66-36</b>	<b>30</b>	
09:50		<b>66-38</b>	<b>28</b>	14 ANEI Y 2pt FG in the paint, hook shot made (7)
09:27	2 BRAUN C 3pt FG , jump shot made (7)	<b>69-38</b>	<b>31</b>	
09:27	0 GARRETT M assist (7)			
09:12				12 MCGRUFF C 2pt FG in the paint, jump shot missed
09:10	33 MCCORMACK D defensive rebound (3)			
09:03	33 MCCORMACK D 2pt FG in the paint, jump shot blocked			
09:03				1 LAURENT J block (1)
09:03				1 LAURENT J defensive rebound (8)
09:03	jump ball situation			
09:03	4 MOSS I substitution out			
09:03	1 DOTSON D substitution in			
08:48				14 ANEI Y 2pt FG outside the paint, jump shot missed
08:45	1 DOTSON D defensive rebound (4)			
08:23	1 DOTSON D turnover bad pass (2)			14 ANEI Y steal (1)
08:23	1 DOTSON D foul personal (2 - 5)			14 ANEI Y foul drawn (2)
08:06	13 ENARUNA T foul shooting (1 - 6)			13 LIKEKELE I foul drawn (5)
08:06		<b>69-39</b>	<b>30</b>	13 LIKEKELE I free throw 1 - 2 made (8)
08:06		<b>69-40</b>	<b>29</b>	13 LIKEKELE I free throw 2 - 2 made (9)
08:06				13 LIKEKELE I substitution out
08:06				0 ANDERSON, III A substitution in
07:44	33 MCCORMACK D 2pt FG outside the paint, jump shot made (8)	<b>71-40</b>	<b>31</b>	
07:27				14 ANEI Y turnover bad pass (2)
07:27	Timeout media			
07:07	13 ENARUNA T 3pt FG , jump shot made (4)	<b>74-40</b>	<b>34</b>	
07:07	33 MCCORMACK D assist (1)			
06:53				14 ANEI Y 2pt FG in the paint, hook shot missed
06:49	0 GARRETT M defensive rebound (3)			
06:44	33 MCCORMACK D foul offensive (2 - 7)			1 LAURENT J foul drawn (2)



**Oklahoma St. at Kansas**

02/24/20 Allen Fieldhouse, Lawrence  
2019-20 Men's Basketball

**Game Time:** 8:00 PM  
**Game Duration:** 2:00  
**Attendance:** 16,300

**Officials:** Kipp Kissinger, Ray Natili, Keith Kimble

Game Time	KAN	Score	Diff	OSU
06:44	33 MCCORMACK D turnover offensive (2)			
06:44	0 GARRETT M substitution out			
06:44	35 AZUBUIKE U substitution in			
06:30	33 MCCORMACK D foul shooting (3 - 8)			12 MCGRUFF C foul drawn (2)
06:30		<b>74-41</b>	<b>33</b>	12 MCGRUFF C free throw 1 - 2 made (9)
06:30		<b>74-42</b>	<b>32</b>	12 MCGRUFF C free throw 2 - 2 made (10)
06:30				1 LAURENT J substitution out
06:30				13 LIKEKELE I substitution in
06:17	13 ENARUNA T 2pt FG in the paint, layup blocked			
06:17				12 MCGRUFF C block (1)
06:13				12 MCGRUFF C defensive rebound (4)
06:09		<b>74-44</b>	<b>30</b>	12 MCGRUFF C 2pt FG outside the paint, jump shot made (12)
05:48	13 ENARUNA T 3pt FG , jump shot missed			
05:45	35 AZUBUIKE U offensive rebound (15)			
05:43	2 BRAUN C 3pt FG , jump shot made (10)	<b>77-44</b>	<b>33</b>	
05:43	35 AZUBUIKE U assist (2)			
05:30				12 MCGRUFF C 2pt FG outside the paint, jump shot missed
05:27	35 AZUBUIKE U defensive rebound (16)			
05:21	1 DOTSON D foul drawn (2)			0 ANDERSON, III A foul personal (1 - 10)
05:21	1 DOTSON D free throw 1 - 2 made (11)	<b>78-44</b>	<b>34</b>	
05:21				14 ANEI Y substitution out
05:21				21 WATERS, III L substitution out
05:21				20 BOONE K substitution in
05:21				22 BOONE K substitution in
05:21	1 DOTSON D free throw 2 - 2 missed			
05:21				12 MCGRUFF C defensive rebound (5)
05:17		<b>78-47</b>	<b>31</b>	12 MCGRUFF C 3pt FG , jump shot made (15)
05:17				0 ANDERSON, III A assist (1)
05:00	35 AZUBUIKE U 2pt FG in the paint, alleyoop made (18)	<b>80-47</b>	<b>33</b>	
05:00	1 DOTSON D assist (3)			
05:00	35 AZUBUIKE U foul drawn (9)			13 LIKEKELE I foul shooting (3 - 11)
05:00				0 ANDERSON, III A substitution out
05:00				31 MITCHELL D substitution in
05:00	35 AZUBUIKE U free throw 1 - 1 made (19)	<b>81-47</b>	<b>34</b>	
04:50				12 MCGRUFF C 3pt FG , jump shot missed
04:47	1 DOTSON D defensive rebound (5)			
04:37	33 MCCORMACK D 2pt FG in the paint, layup made (10)	<b>83-47</b>	<b>36</b>	
04:37	1 DOTSON D assist (4)			
04:25				13 LIKEKELE I turnover lost ball (3)
04:25				Timeout 30 Sec
04:21	1 DOTSON D substitution out			
04:21	35 AZUBUIKE U substitution out			
04:21	0 GARRETT M substitution in			
04:21	30 AGBAJI O substitution in			
04:06	2 BRAUN C 2pt FG in the paint, layup missed			
04:02	13 ENARUNA T offensive rebound (2)			
03:55	33 MCCORMACK D 2pt FG outside the paint, jump shot missed			
03:52				22 BOONE K defensive rebound (1)
03:39		<b>83-49</b>	<b>34</b>	20 BOONE K 2pt FG in the paint, layup made (2)



**Oklahoma St. at Kansas**

02/24/20 Allen Fieldhouse, Lawrence  
2019-20 Men's Basketball

**Game Time:** 8:00 PM  
**Game Duration:** 2:00  
**Attendance:** 16,300

**Officials:** Kipp Kissinger, Ray Natili, Keith Kimble

Game Time	KAN	Score	Diff	OSU
03:39				22 BOONE K assist (2)
03:22	0 GARRETT M 2pt FG in the paint, layup missed			
03:19				13 LIKEKELE I defensive rebound (5)
03:14		<b>83-51</b>	<b>32</b>	13 LIKEKELE I 2pt FG fast break outside the paint, jump shot made (11)
02:50	33 MCCORMACK D 2pt FG in the paint, jump shot missed			
02:47				13 LIKEKELE I defensive rebound (6)
02:34	33 MCCORMACK D foul shooting (4 - 9)			12 MCGRIFF C foul drawn (3)
02:34				12 MCGRIFF C free throw 1 - 2 missed
02:34				offensive dead ball rebound (3)
02:34	0 GARRETT M substitution out			
02:34	30 AGBAJI O substitution out			
02:34	12 TEAHAN C substitution in			
02:34	20 JANKOVICH M substitution in			
02:34				13 LIKEKELE I substitution out
02:34				0 ANDERSON, III A substitution in
02:34		<b>83-52</b>	<b>31</b>	12 MCGRIFF C free throw 2 - 2 made (16)
02:26	2 BRAUN C turnover bad pass (1)			
02:26				12 MCGRIFF C substitution out
02:26				35 ROESSINK H substitution in
02:16	2 BRAUN C foul shooting (2 - 10)			22 BOONE K foul drawn (2)
02:16		<b>83-53</b>	<b>30</b>	22 BOONE K free throw 1 - 2 made (3)
02:16		<b>83-54</b>	<b>29</b>	22 BOONE K free throw 2 - 2 made (4)
01:55	12 TEAHAN C 3pt FG , jump shot missed			
01:51				20 BOONE K defensive rebound (1)
01:44		<b>83-56</b>	<b>27</b>	22 BOONE K 2pt FG in the paint, dunk, made (6)
01:44				31 MITCHELL D assist (1)
01:29	20 JANKOVICH M 3pt FG , jump shot blocked			
01:29				20 BOONE K block (1)
01:25	20 JANKOVICH M offensive rebound (1)			
01:19	33 MCCORMACK D 2pt FG in the paint, jump shot missed			
01:15				0 ANDERSON, III A defensive rebound (1)
01:11		<b>83-58</b>	<b>25</b>	0 ANDERSON, III A 2pt FG fast break in the paint, layup made (2)
00:50	20 JANKOVICH M turnover lost ball (1)			
00:28				22 BOONE K 2pt FG in the paint, layup missed
00:25	33 MCCORMACK D defensive rebound (4)			
<b>END OF GAME</b>				
<b>KAN 83-58 OSU</b>				



Oklahoma St. at Kansas

02/24/20 Allen Fieldhouse, Lawrence  
2019-20 Men's Basketball

Game Time: 8:00 PM  
Game Duration: 2:00  
Attendance: 16,300

Officials: Kipp Kissinger, Ray Natili, Keith Kimble

Oklahoma St. - 33

NO.	Name	Min	FG			Rebounds			Fouls		TP	AS	TO	ST	Blocks		+/-
			M-A	M-A	M-A	OR	DR	TOT	PF	FD					BS	BA	
12	Cameron McGriff	F 15:23	3-6	1-2	3-4	1	2	3	2	3	10	0	2	0	1	0	-18
14	Yor Anei	F 11:24	1-4	0-0	0-0	0	0	0	0	1	2	1	2	1	1	0	-16
1	Jonathan Laurent	G 10:13	0-1	0-0	0-0	1	2	3	2	1	0	0	1	0	1	1	-10
13	Isaac Likekele	G 15:50	2-3	0-0	3-4	0	3	3	2	2	7	0	3	0	0	0	-19
21	Lindy Waters, III	G 14:39	1-2	0-0	2-2	0	1	1	1	1	4	0	0	1	0	0	-24
4	Thomas Dziagwa	04:02	0-1	0-1	0-0	0	0	0	1	0	0	0	0	0	0	0	-11
0	Avery Anderson, III	07:06	1-1	0-0	0-0	0	1	1	1	0	2	1	2	0	0	0	-1
22	Kalib Boone	08:36	1-2	0-0	4-4	0	1	1	2	2	6	2	0	0	0	0	1
20	Keylan Boone	05:21	1-1	0-0	0-0	0	1	1	0	0	2	0	0	0	1	0	9
31	Dee Mitchell	05:00	0-0	0-0	0-0	0	0	0	0	0	0	1	0	0	0	0	8
35	Hidde Roessink	02:26	0-0	0-0	0-0	0	0	0	0	0	0	0	0	0	0	0	6
Team						0	0	0			0		0				
<b>Totals</b>			10-21	1-3	12-14	2	11	13	11	10	33	5	10	2	4	1	-15

Shooting By Period		
2 <sup>nd</sup> FG%	10-21	47.6%
3PT%	1-3	33.3%
FT%	12-14	85.7%
GM FG%	10-21	47.6%
3PT%	1-3	33.3%
FT%	12-14	85.7%

Dead Ball Rebounds: 2, 0

Technical Fouls: McGriff 2<sup>nd</sup> 14:37

Kansas - 48

NO.	Name	Min	FG			Rebounds			Fouls		TP	AS	TO	ST	Blocks		+/-
			M-A	M-A	M-A	OR	DR	TOT	PF	FD					BS	BA	
35	Udoka Azubuike	C 11:34	4-4	0-0	3-4	3	2	5	0	4	11	1	1	0	1	0	22
0	Marcus Garrett	G 14:15	2-5	0-1	1-1	0	1	1	0	2	5	3	1	1	0	0	18
1	Devon Dotson	G 12:52	2-4	0-1	4-5	0	3	3	2	2	8	2	1	1	0	1	23
4	Isaiah Moss	G 10:57	1-2	1-1	0-0	0	0	0	2	1	3	1	0	1	0	0	21
30	Ochai Agbaji	G 11:20	3-3	1-1	1-1	0	0	0	0	1	8	0	0	0	0	0	15
2	Christian Braun	12:38	2-3	2-2	0-0	0	1	1	2	0	6	0	1	0	0	0	-1
33	David McCormack	10:49	2-6	0-0	0-0	0	2	2	3	0	4	1	1	0	0	1	-5
13	Tristan Enaruna	10:27	1-3	1-2	0-0	1	0	1	1	0	3	0	0	0	0	1	-4
12	Chris Teahan	02:34	0-1	0-1	0-0	0	0	0	0	0	0	0	0	0	0	0	-7
20	Michael Jankovich	02:34	0-1	0-1	0-0	1	0	1	0	0	0	0	1	0	0	1	-7
Team						0	0	0			0		0				
<b>Totals</b>			17-32	5-10	9-11	5	9	14	10	10	48	8	6	3	1	4	15

Shooting By Period		
2 <sup>nd</sup> FG%	17-32	53.1%
3PT%	5-10	50.0%
FT%	9-11	81.8%
GM FG%	17-32	53.1%
3PT%	5-10	50.0%
FT%	9-11	81.8%

Dead Ball Rebounds: 1, 0

Technical Fouls: NONE

	OSU	KAN	Points from	OSU	KAN	Period by Period Scoring	
Biggest lead	0 (1 <sup>st</sup> 20:00)	36 (2 <sup>nd</sup> 4:37)	Turnovers	6	19		
Best Scoring Run	11 (2 <sup>nd</sup> 1:11)	11 (2 <sup>nd</sup> 14:06)	Paint	14	18		
Lead Changes	0		Second Chance	0	8	OSU	33
Times Tied	0		Fast Breaks	4	6		33
Time with Lead	00:00	19:48	Bench	10	13	KAN	48
							48

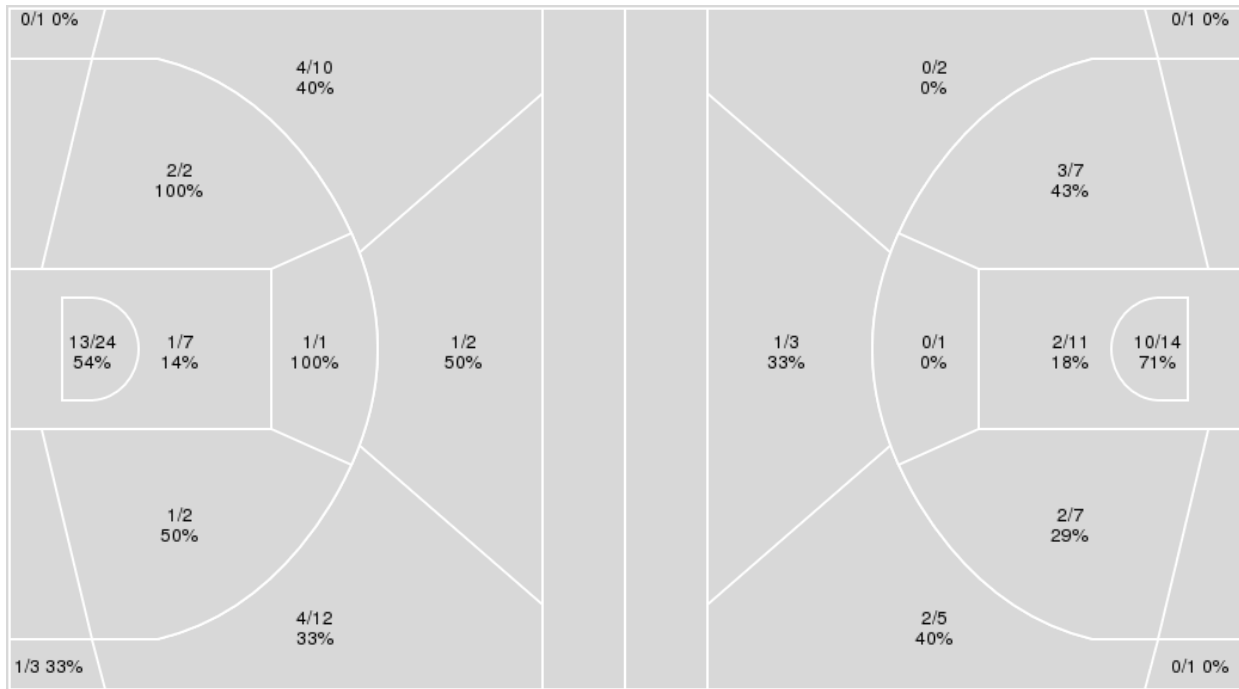


{ Players => 0, 1, 2, 3, 4, 5, 10, 12, 13, 20, 22, 30, 33, 35, 44; } FG  
Types => All; Results => All;

{ Players => All; } FG Types => All; Results => All;

**Kansas**

**Oklahoma St.**



<b>Kansas</b>	<b>M/A</b>	<b>%</b>
Field Goals	28/64	44
2 Points	18/36	50
3 Points	10/28	36
Free Throws	17/20	85

<b>Oklahoma St.</b>	<b>M/A</b>	<b>%</b>
Field Goals	20/52	38
2 Points	17/40	42
3 Points	3/12	25
Free Throws	15/19	79



**Oklahoma St. at Kansas**

02/24/20 Allen Fieldhouse, Lawrence  
2019-20 Men's Basketball

Game Time: 8:00 PM  
Game Duration: 2:00  
Attendance: 16,300

Officials: Kipp Kissinger, Ray Natili, Keith Kimble

**Oklahoma St.**

No	Name	Mins		Score		Points Diff		Points per Min		Assists		Rebounds		Steals		Turnovers	
		On	Off	On	Off	On	Off	On	Off	On	Off	On	Off	On	Off	On	Off
0	Avery Anderson, III	11:54	28:06	21 - 27	37 - 56	-6	-19	1.76	1.32	3	5	7	25	0	4	4	9
1	Jonathan Laurent	24:33	15:27	31 - 50	27 - 33	-19	-6	1.26	1.75	3	5	19	13	2	2	6	7
4	Thomas Dziagwa	10:38	29:22	14 - 27	44 - 56	-13	-12	1.32	1.50	2	6	6	26	2	2	4	9
12	Cameron McGriff	31:12	08:48	44 - 67	14 - 16	-23	-2	1.41	1.59	7	1	29	3	4	0	12	1
13	Isaac Likekele	34:54	05:06	48 - 76	10 - 7	-28	3	1.38	1.96	7	1	30	2	4	0	12	1
14	Yor Anei	28:45	11:15	38 - 58	20 - 25	-20	-5	1.32	1.78	4	4	24	8	3	1	10	3
20	Keylan Boone	07:18	32:42	15 - 10	43 - 73	5	-30	2.05	1.31	3	5	6	26	0	4	1	12
21	Lindy Waters, III	32:08	07:52	42 - 73	16 - 10	-31	6	1.31	2.03	4	4	23	9	4	0	12	1
22	Kalib Boone	11:10	28:50	20 - 24	38 - 59	-4	-21	1.79	1.32	4	4	8	24	1	3	3	10
31	Dee Mitchell	05:00	35:00	11 - 3	47 - 80	8	-33	2.20	1.34	2	6	5	27	0	4	1	12
35	Hidde Roessink	02:28	37:32	6 - 0	52 - 83	6	-31	2.43	1.39	1	7	3	29	0	4	0	13

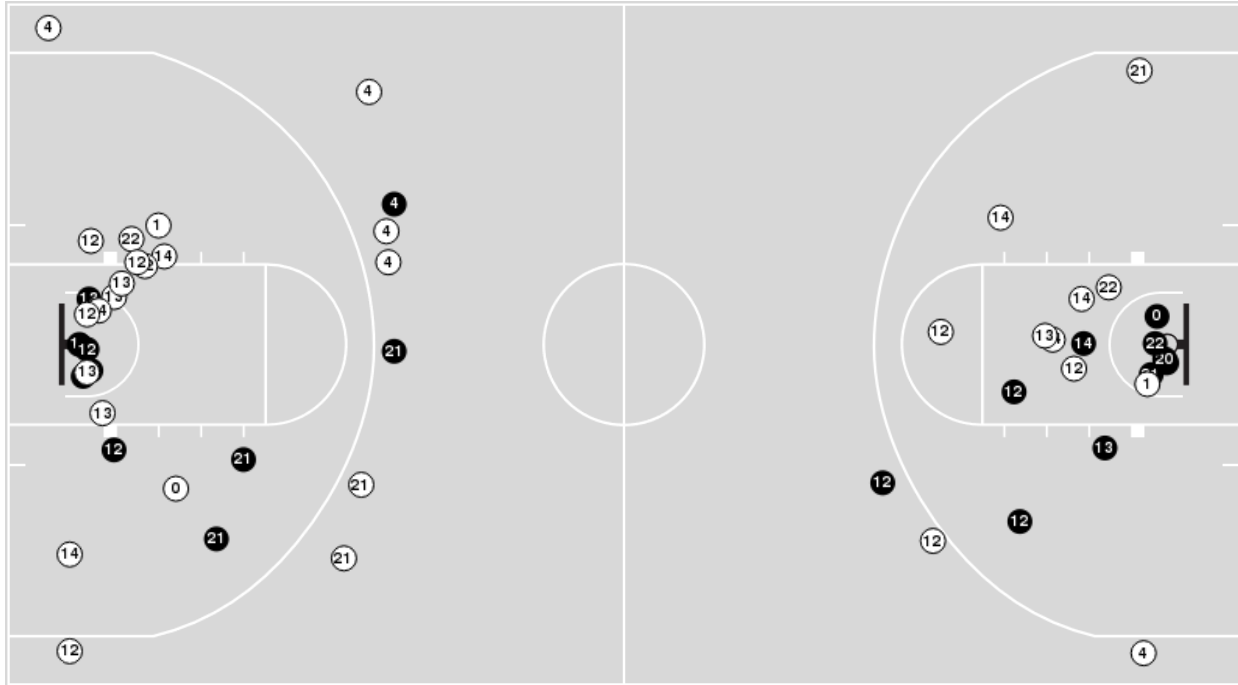
**Kansas**

No	Name	Mins		Score		Points Diff		Points per Min		Assists		Rebounds		Steals		Turnovers	
		On	Off	On	Off	On	Off	On	Off	On	Off	On	Off	On	Off	On	Off
0	Marcus Garrett	31:14	08:46	65 - 41	18 - 17	24	1	2.08	2.05	11	5	30	8	3	0	7	3
1	Devon Dotson	27:24	12:36	64 - 34	19 - 24	30	-5	2.34	1.51	14	2	24	14	3	0	7	3
2	Christian Braun	22:08	17:52	45 - 36	38 - 22	9	16	2.03	2.13	8	8	24	14	0	3	6	4
4	Isaiah Moss	27:33	12:27	63 - 34	20 - 24	29	-4	2.29	1.61	12	4	26	12	3	0	6	4
12	Chris Teahan	02:34	37:26	0 - 7	83 - 51	-7	32	0.00	2.22	0	16	2	36	0	3	2	8
13	Tristan Enaruna	16:49	23:11	31 - 32	52 - 26	-1	26	1.84	2.24	6	10	17	21	0	3	5	5
20	Michael Jankovich	02:34	37:26	0 - 7	83 - 51	-7	32	0.00	2.22	0	16	2	36	0	3	2	8
30	Ochai Agbaji	27:21	12:39	55 - 34	28 - 24	21	4	2.01	2.21	10	6	24	14	3	0	5	5
33	David McCormack	15:50	24:10	31 - 31	52 - 27	0	25	1.96	2.15	8	8	15	23	0	3	6	4
35	Udoka Azubuike	26:33	13:27	61 - 34	22 - 24	27	-2	2.30	1.64	11	5	26	12	3	0	4	6

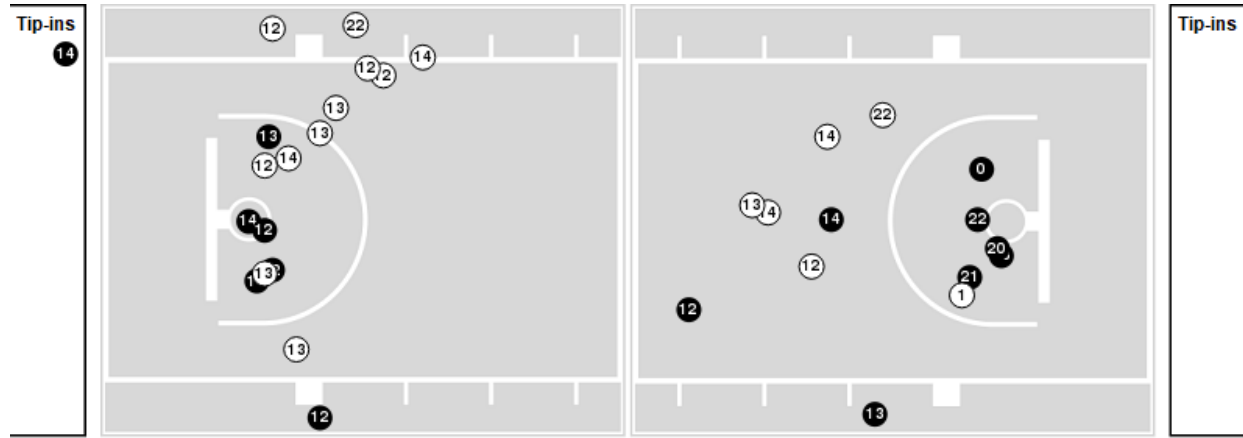


Players => AllFG Types=>AllResults=>All  
**Oklahoma St.**

**All Field Goals**



**Blow Up Chart**



● Made    ○ Missed    N - Player Number

Oklahoma St.	M/A	%
Field Goals	20/52	38
2 Points	17/40	42
3 Points	3/12	25
Free Throws	15/19	79

Oklahoma St.	M/A	%
Points in the Paint	24 (12 / 25)	48
Fast Break Points	8 (5/6)	83
Second Chance Points	6 (3/5)	60
Effective FG%	41	

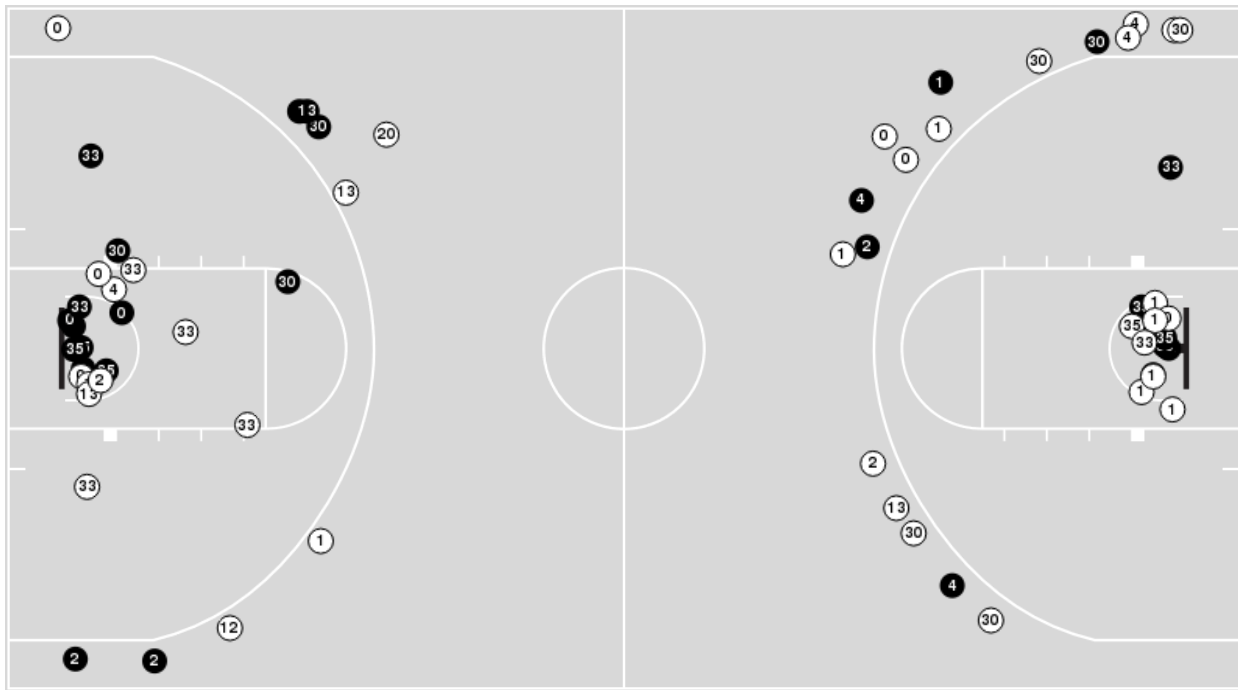




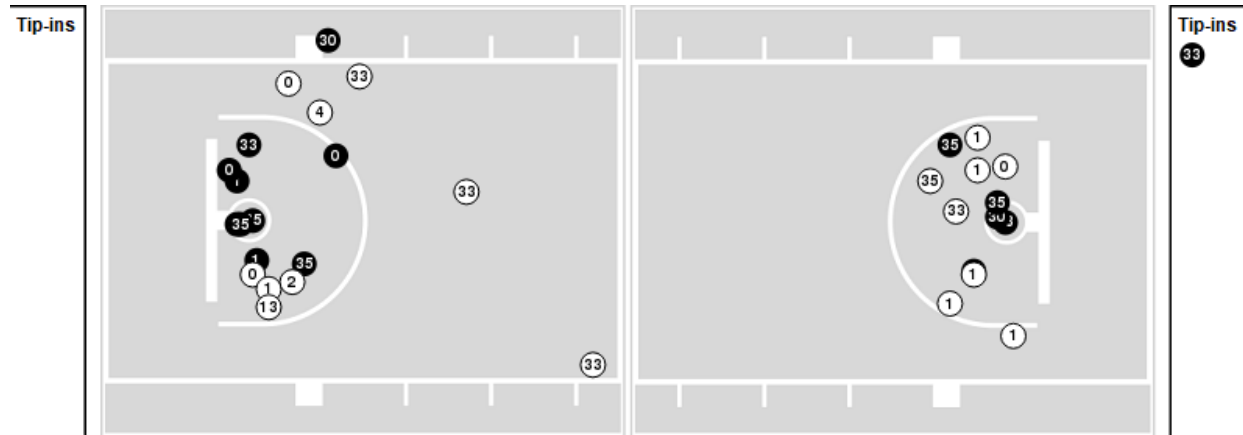
Players => 0, 1, 2, 3, 4, 5, 10, 12, 13, 20, 22, 30, 33, 35, 44 FG Types=>All Results=>All

**Kansas**

**All Field Goals**



**Blow Up Chart**



**N** Made    **(N)** Missed    N - Player Number

Kansas	M/A	%
Field Goals	28/64	44
2 Points	18/36	50
3 Points	10/28	36
Free Throws	17/20	85

Kansas	M/A	%
Points in the Paint	28 (14 / 31)	45
Fast Break Points	11 (6/6)	100
Second Chance Points	14 (8/13)	62
Effective FG%	52	



**Oklahoma St. at Kansas**

02/24/20 Allen Fieldhouse, Lawrence  
2019-20 Men's Basketball

**Game Time:** 8:00 PM  
**Game Duration:** 2:00  
**Attendance:** 16,300

**Officials:** Kipp Kissinger, Ray Natili, Keith Kimble

**Oklahoma St.**

Lineup	Quarter On	Time On	Quarter Off	Time Off	Time on Court	Score	Score Diff	Reb	Stl	Tov	Ass	PPP
1- Laurent J/ 12- McGriff C/ 13- Likekele I/ 14- Anei Y/ 21- Waters, III L/	1	20:00	1	12:53	07:07	8-9	-1	11	1	2	0	0.6431
4- Dziagwa T/ 12- McGriff C/ 13- Likekele I/ 21- Waters, III L/ 22- Boone K/	1	12:53	1	10:28	02:25	2-6	-4	2	1	0	0	0.5155
0- Anderson, III A/ 12- McGriff C/ 13- Likekele I/ 21- Waters, III L/ 22- Boone K/	1	10:28	1	10:19	00:09	0-1	-1	0	0	0	0	0.0000
0- Anderson, III A/ 12- McGriff C/ 13- Likekele I/ 14- Anei Y/ 21- Waters, III L/	1	10:19	1	08:45	01:34	4-2	2	2	0	0	0	2.0000
0- Anderson, III A/ 1- Laurent J/ 13- Likekele I/ 20- Boone K/ 21- Waters, III L/	1	08:45	1	08:40	00:05	0-1	-1	0	0	0	0	0.0000
0- Anderson, III A/ 1- Laurent J/ 13- Likekele I/ 14- Anei Y/ 20- Boone K/	1	08:40	1	07:44	00:56	0-2	-2	0	0	0	0	0.0000
0- Anderson, III A/ 1- Laurent J/ 14- Anei Y/ 20- Boone K/ 21- Waters, III L/	1	07:44	1	06:48	00:56	1-2	-1	0	0	0	0	0.5319
1- Laurent J/ 12- McGriff C/ 13- Likekele I/ 14- Anei Y/ 21- Waters, III L/	1	06:48	1	05:19	01:29	2-4	-2	0	0	0	1	0.6667
1- Laurent J/ 4- Dziagwa T/ 12- McGriff C/ 13- Likekele I/ 14- Anei Y/	1	05:19	1	03:46	01:33	2-3	-1	2	0	0	1	1.0000
4- Dziagwa T/ 12- McGriff C/ 13- Likekele I/ 14- Anei Y/ 21- Waters, III L/	1	03:46	1	02:14	01:32	3-1	2	1	0	0	1	1.5000
1- Laurent J/ 4- Dziagwa T/ 13- Likekele I/ 14- Anei Y/ 21- Waters, III L/	1	02:14	1	01:08	01:06	3-2	1	0	0	0	0	1.5000
0- Anderson, III A/ 1- Laurent J/ 13- Likekele I/ 14- Anei Y/ 21- Waters, III L/	1	01:08	1	00:02	01:06	0-2	-2	0	0	1	0	0.0000
0- Anderson, III A/ 1- Laurent J/ 13- Likekele I/ 14- Anei Y/ 35- Roessink H/	1	00:02	2	20:00	00:02	0-0	0	1	0	0	0	0.0000
1- Laurent J/ 12- McGriff C/ 13- Likekele I/ 14- Anei Y/ 21- Waters, III L/	2	20:00	2	15:55	04:05	5-8	-3	4	0	2	1	0.8503
4- Dziagwa T/ 12- McGriff C/ 13- Likekele I/ 14- Anei Y/ 21- Waters, III L/	2	15:55	2	14:04	01:43	0-8	-8	1	1	4	0	0.0000
0- Anderson, III A/ 12- McGriff C/ 13- Likekele I/ 21- Waters, III L/ 22- Boone K/	2	14:04	2	12:38	01:34	2-6	-4	0	0	2	1	0.6667
1- Laurent J/ 4- Dziagwa T/ 13- Likekele I/ 21- Waters, III L/ 22- Boone K/	2	12:38	2	10:49	01:49	2-6	-4	0	0	0	0	0.6944
1- Laurent J/ 4- Dziagwa T/ 13- Likekele I/ 14- Anei Y/ 21- Waters, III L/	2	10:49	2	10:27	00:22	2-1	1	0	0	0	0	2.2727
1- Laurent J/ 12- McGriff C/ 13- Likekele I/ 14- Anei Y/ 21- Waters, III L/	2	10:27	2	08:06	02:21	4-5	-1	1	1	0	0	1.0309
0- Anderson, III A/ 1- Laurent J/ 12- McGriff C/ 14- Anei Y/ 21- Waters, III L/	2	08:06	2	06:30	01:36	2-5	-3	0	0	1	0	0.6944
0- Anderson, III A/ 12- McGriff C/ 13- Likekele I/ 14- Anei Y/ 21- Waters, III L/	2	06:30	2	05:21	01:09	2-4	-2	1	0	0	0	1.0000
0- Anderson, III A/ 12- McGriff C/ 13- Likekele I/ 20- Boone K/ 22- Boone K/	2	05:21	2	05:00	00:21	3-2	1	1	0	0	1	3.0000
12- McGriff C/ 13- Likekele I/ 20- Boone K/ 22- Boone K/ 31- Mitchell D/	2	05:00	2	02:34	02:26	4-3	1	3	0	1	1	0.9009
0- Anderson, III A/ 12- McGriff C/ 20- Boone K/ 22- Boone K/ 31- Mitchell D/	2	02:34	2	02:26	00:08	1-0	1	0	0	0	0	2.2727
0- Anderson, III A/ 20- Boone K/ 22- Boone K/ 31- Mitchell D/ 35- Roessink H/	2	02:26	2	00:00	02:26	6-0	6	2	0	0	1	1.5464



**Oklahoma St. at Kansas**

02/24/20 Allen Fieldhouse, Lawrence  
2019-20 Men's Basketball

**Game Time:** 8:00 PM  
**Game Duration:** 2:00  
**Attendance:** 16,300

**Officials:** Kipp Kissinger, Ray Natili, Keith Kimble

**Kansas**

Lineup	Quarter On	Time On	Quarter Off	Time Off	Time on Court	Score	Score Diff	Reb	Stl	Tov	Ass	PPP
0- Garrett M/ 1- Dotson D/ 4- Moss I/ 30- Agbaji O/ 35- Azubuike U/	1	20:00	1	12:53	07:07	9-8	1	8	0	1	3	0.7500
1- Dotson D/ 2- Braun C/ 4- Moss I/ 13- Enaruna T/ 33- McCormack D/	1	12:53	1	11:59	00:54	3-2	1	0	0	1	0	1.5000
0- Garrett M/ 2- Braun C/ 4- Moss I/ 13- Enaruna T/ 33- McCormack D/	1	11:59	1	11:08	00:51	3-0	3	2	0	0	0	2.0833
0- Garrett M/ 2- Braun C/ 13- Enaruna T/ 30- Agbaji O/ 35- Azubuike U/	1	11:08	1	08:45	02:23	3-4	-1	2	0	0	0	1.0870
0- Garrett M/ 1- Dotson D/ 2- Braun C/ 30- Agbaji O/ 35- Azubuike U/	1	08:45	1	07:44	01:01	3-0	3	2	0	0	0	2.0833
1- Dotson D/ 2- Braun C/ 4- Moss I/ 30- Agbaji O/ 33- McCormack D/	1	07:44	1	07:11	00:33	2-1	1	0	0	0	1	2.0000
0- Garrett M/ 1- Dotson D/ 4- Moss I/ 30- Agbaji O/ 33- McCormack D/	1	07:11	1	04:28	02:43	4-4	0	4	0	1	2	0.8000
0- Garrett M/ 2- Braun C/ 4- Moss I/ 13- Enaruna T/ 35- Azubuike U/	1	04:28	1	02:14	02:14	3-3	0	4	0	0	1	1.5000
0- Garrett M/ 2- Braun C/ 4- Moss I/ 30- Agbaji O/ 35- Azubuike U/	1	02:14	1	02:14	00:00	1-0	1	0	0	1	0	0.6944
0- Garrett M/ 1- Dotson D/ 4- Moss I/ 30- Agbaji O/ 35- Azubuike U/	1	02:14	1	01:34	00:40	2-3	-1	0	0	0	1	2.0000
1- Dotson D/ 2- Braun C/ 4- Moss I/ 30- Agbaji O/ 35- Azubuike U/	1	01:34	2	20:00	01:34	2-0	2	2	0	0	0	1.0638
0- Garrett M/ 1- Dotson D/ 4- Moss I/ 30- Agbaji O/ 35- Azubuike U/	2	20:00	2	12:38	07:22	23-7	16	2	3	2	2	1.5132
1- Dotson D/ 2- Braun C/ 4- Moss I/ 30- Agbaji O/ 35- Azubuike U/	2	12:38	2	11:50	00:48	2-0	2	1	0	0	1	2.0000
0- Garrett M/ 2- Braun C/ 4- Moss I/ 30- Agbaji O/ 35- Azubuike U/	2	11:50	2	10:49	01:01	4-2	2	2	0	0	0	1.7241
0- Garrett M/ 2- Braun C/ 4- Moss I/ 30- Agbaji O/ 33- McCormack D/	2	10:49	2	10:27	00:22	0-1	-1	0	0	0	0	0.0000
0- Garrett M/ 2- Braun C/ 4- Moss I/ 13- Enaruna T/ 33- McCormack D/	2	10:27	2	09:03	01:24	5-3	2	1	0	0	1	1.6667
0- Garrett M/ 1- Dotson D/ 2- Braun C/ 13- Enaruna T/ 33- McCormack D/	2	09:03	2	06:44	02:19	5-2	3	2	0	2	1	1.2500
1- Dotson D/ 2- Braun C/ 13- Enaruna T/ 33- McCormack D/ 35- Azubuike U/	2	06:44	2	04:21	02:23	9-7	2	3	0	0	3	1.6917
0- Garrett M/ 2- Braun C/ 13- Enaruna T/ 30- Agbaji O/ 33- McCormack D/	2	04:21	2	02:34	01:47	0-4	-4	1	0	0	0	0.0000
2- Braun C/ 12- Teahan C/ 13- Enaruna T/ 20- Jankovich M/ 33- McCormack D/	2	02:34	2	00:00	02:34	0-7	-7	2	0	2	0	0.0000



**Oklahoma St. at Kansas**

02/24/20 Allen Fieldhouse, Lawrence  
2019-20 Men's Basketball

**Game Time:** 8:00 PM  
**Game Duration:** 2:00  
**Attendance:** 16,300

**Officials:** Kipp Kissinger, Ray Natili, Keith Kimble

**Oklahoma St.**

Lineup	Time	Score	Score Diff	Pts/Min	Reb	Stl	Tov	Ass	PPP
1- Laurent J/ 12- McGriff C/ 13- Likekele I/ 14- Anei Y/ 21- Waters, III L/	15:02	19-26	-7	1.2639	16	2	4	2	0.7540
4- Dziagwa T/ 12- McGriff C/ 13- Likekele I/ 14- Anei Y/ 21- Waters, III L/	03:15	3-9	-6	0.9231	2	1	4	1	0.5000
0- Anderson, III A/ 12- McGriff C/ 13- Likekele I/ 14- Anei Y/ 21- Waters, III L/	02:43	6-6	0	2.2086	3	0	0	0	1.5000
12- McGriff C/ 13- Likekele I/ 20- Boone K/ 22- Boone K/ 31- Mitchell D/	02:26	4-3	1	1.6438	3	0	1	1	0.9009
0- Anderson, III A/ 20- Boone K/ 22- Boone K/ 31- Mitchell D/ 35- Roessink H/	02:26	6-0	6	2.4658	2	0	0	1	1.5464
4- Dziagwa T/ 12- McGriff C/ 13- Likekele I/ 21- Waters, III L/ 22- Boone K/	02:25	2-6	-4	0.8276	2	1	0	0	0.5155
1- Laurent J/ 4- Dziagwa T/ 13- Likekele I/ 21- Waters, III L/ 22- Boone K/	01:49	2-6	-4	1.1009	0	0	0	0	0.6944
0- Anderson, III A/ 12- McGriff C/ 13- Likekele I/ 21- Waters, III L/ 22- Boone K/	01:43	2-7	-5	1.1650	0	0	2	1	0.6667
0- Anderson, III A/ 1- Laurent J/ 12- McGriff C/ 14- Anei Y/ 21- Waters, III L/	01:36	2-5	-3	1.2500	0	0	1	0	0.6944
1- Laurent J/ 4- Dziagwa T/ 12- McGriff C/ 13- Likekele I/ 14- Anei Y/	01:33	2-3	-1	1.2903	2	0	0	1	1.0000
1- Laurent J/ 4- Dziagwa T/ 13- Likekele I/ 14- Anei Y/ 21- Waters, III L/	01:28	5-3	2	3.4091	0	0	0	0	1.7361
0- Anderson, III A/ 1- Laurent J/ 13- Likekele I/ 14- Anei Y/ 21- Waters, III L/	01:06	0-2	-2	0.0000	0	0	1	0	0.0000
0- Anderson, III A/ 1- Laurent J/ 13- Likekele I/ 14- Anei Y/ 20- Boone K/	00:56	0-2	-2	0.0000	0	0	0	0	0.0000
0- Anderson, III A/ 1- Laurent J/ 14- Anei Y/ 20- Boone K/ 21- Waters, III L/	00:56	1-2	-1	1.0714	0	0	0	0	0.5319
0- Anderson, III A/ 12- McGriff C/ 13- Likekele I/ 20- Boone K/ 22- Boone K/	00:21	3-2	1	8.5714	1	0	0	1	3.0000
0- Anderson, III A/ 12- McGriff C/ 20- Boone K/ 22- Boone K/ 31- Mitchell D/	00:08	1-0	1	7.5000	0	0	0	0	2.2727
0- Anderson, III A/ 1- Laurent J/ 13- Likekele I/ 20- Boone K/ 21- Waters, III L/	00:05	0-1	-1	0.0000	0	0	0	0	0.0000
0- Anderson, III A/ 1- Laurent J/ 13- Likekele I/ 14- Anei Y/ 35- Roessink H/	00:02	0-0	0	0.0000	1	0	0	0	0.0000



**Oklahoma St. at Kansas**

02/24/20 Allen Fieldhouse, Lawrence  
2019-20 Men's Basketball

**Game Time:** 8:00 PM  
**Game Duration:** 2:00  
**Attendance:** 16,300

**Officials:** Kipp Kissinger, Ray Natili, Keith Kimble

**Kansas**

Lineup	Time	Score	Score Diff	Pts/Min	Reb	Stl	Tov	Ass	PPP
0- Garrett M/ 1- Dotson D/ 4- Moss I/ 30- Agbaji O/ 35- Azubuike U/	15:09	34-18	16	2.2442	10	3	3	6	1.2057
0- Garrett M/ 1- Dotson D/ 4- Moss I/ 30- Agbaji O/ 33- McCormack D/	02:43	4-4	0	1.4724	4	0	1	2	0.8000
2- Braun C/ 12- Teahan C/ 13- Enaruna T/ 20- Jankovich M/ 33- McCormack D/	02:34	0-7	-7	0.0000	2	0	2	0	0.0000
0- Garrett M/ 2- Braun C/ 13- Enaruna T/ 30- Agbaji O/ 35- Azubuike U/	02:23	3-4	-1	1.2587	2	0	0	0	1.0870
1- Dotson D/ 2- Braun C/ 13- Enaruna T/ 33- McCormack D/ 35- Azubuike U/	02:23	9-7	2	3.7762	3	0	0	3	1.6917
1- Dotson D/ 2- Braun C/ 4- Moss I/ 30- Agbaji O/ 35- Azubuike U/	02:22	4-0	4	1.6901	3	0	0	1	1.3889
0- Garrett M/ 1- Dotson D/ 2- Braun C/ 13- Enaruna T/ 33- McCormack D/	02:19	5-2	3	2.1583	2	0	2	1	1.2500
0- Garrett M/ 2- Braun C/ 4- Moss I/ 13- Enaruna T/ 33- McCormack D/	02:15	8-3	5	3.5556	3	0	0	1	1.8018
0- Garrett M/ 2- Braun C/ 4- Moss I/ 13- Enaruna T/ 35- Azubuike U/	02:14	3-3	0	1.3433	4	0	0	1	1.5000
0- Garrett M/ 2- Braun C/ 13- Enaruna T/ 30- Agbaji O/ 33- McCormack D/	01:47	0-4	-4	0.0000	1	0	0	0	0.0000
0- Garrett M/ 1- Dotson D/ 2- Braun C/ 30- Agbaji O/ 35- Azubuike U/	01:01	3-0	3	2.9508	2	0	0	0	2.0833
0- Garrett M/ 2- Braun C/ 4- Moss I/ 30- Agbaji O/ 35- Azubuike U/	01:01	5-2	3	4.9180	2	0	1	0	1.3298
1- Dotson D/ 2- Braun C/ 4- Moss I/ 13- Enaruna T/ 33- McCormack D/	00:54	3-2	1	3.3333	0	0	1	0	1.5000
1- Dotson D/ 2- Braun C/ 4- Moss I/ 30- Agbaji O/ 33- McCormack D/	00:33	2-1	1	3.6364	0	0	0	1	2.0000
0- Garrett M/ 2- Braun C/ 4- Moss I/ 30- Agbaji O/ 33- McCormack D/	00:22	0-1	-1	0.0000	0	0	0	0	0.0000