



Kansas at Kentucky

12/01/20 Bankers Life Fieldhouse, Indianapolis
State Farm Champions Classic

Officials: Patrick Adams, Doug Sirmons, Jamie Luckie

Kansas - 65

Record: 2-1

NO.	Name	F	Min	FG	3P	FT	Rebounds			Fouls		TP	AS	TO	ST	Blocks		+/-
				M-A	M-A	M-A	OR	DR	TOT	PF	FD					BS	BA	
10	Jalen Wilson	F	31:08	8-16	2-5	5-8	3	7	10	4	7	23	0	3	0	0	0	10
33	David McCormack	F	19:21	1-9	0-0	5-6	2	3	5	1	6	7	0	2	0	0	3	-7
0	Marcus Garrett	G	34:51	4-11	0-1	0-0	1	4	5	2	0	8	1	3	1	0	3	7
2	Christian Braun	G	37:49	2-10	0-4	4-8	6	7	13	3	7	8	0	0	2	2	3	7
30	Ochai Agbaji	G	37:00	5-17	3-9	4-6	1	4	5	1	4	17	3	2	1	1	1	9
44	Mitch Lightfoot		02:26	0-0	0-0	0-0	0	0	0	0	0	0	0	0	0	0	0	-5
24	Bryce Thompson		09:04	0-2	0-1	0-0	0	0	0	3	0	0	0	0	0	0	1	-12
13	Tristan Enaruna		01:41	0-0	0-0	0-0	0	0	0	0	0	0	0	0	0	0	0	-2
3	Dajuan Harris		25:04	0-1	0-0	2-2	0	1	1	2	2	2	5	0	4	1	0	12
1	Tyon Grant-Foster		01:36	0-1	0-1	0-0	1	0	1	0	0	0	0	0	0	0	1	-4
Team							5	2	7			0		1				
Totals				20-67	5-21	20-30	19	28	47	17	26	65	9	11	8	4	12	3

Shooting By Period		
1 st FG%	11-35	31.4%
3PT%	2-10	20.0%
FT%	5-9	55.6%
2 nd FG%	9-32	28.1%
3PT%	3-11	27.3%
FT%	15-21	71.4%
GM FG%	20-67	29.9%
3PT%	5-21	23.8%
FT%	20-30	66.7%

Dead Ball Rebounds: 8, 1

Technical Fouls: Braun 1st:04 Coach 2nd:19:45

Kentucky - 62

Record: 1-2

NO.	Name	F	Min	FG	3P	FT	Rebounds			Fouls		TP	AS	TO	ST	Blocks		+/-
				M-A	M-A	M-A	OR	DR	TOT	PF	FD					BS	BA	
23	Isaiah Jackson	F	30:08	3-7	0-1	1-1	3	9	12	4	3	7	0	1	0	8	0	-4
30	Olivier Sarr	F	13:56	4-6	0-0	0-0	2	4	6	4	2	8	1	0	0	2	0	6
2	Devin Askew	G	24:16	1-5	0-2	5-6	1	1	2	3	2	7	1	4	1	0	1	6
3	Brandon Boston Jr.	G	30:54	4-13	0-4	4-4	1	5	6	1	2	12	1	3	1	0	1	-9
5	Terrence Clarke	G	34:56	3-11	0-4	0-0	1	2	3	5	0	6	2	3	0	1	1	-2
10	Davion Mintz		22:48	4-11	2-5	2-4	2	0	2	0	3	12	2	3	2	0	1	0
21	Cam'Ron Fletcher		13:06	0-2	0-2	0-0	0	2	2	3	0	0	0	0	2	0	0	-2
55	Lance Ware		09:53	0-0	0-0	1-2	0	1	1	3	1	1	1	0	1	1	0	0
11	Dontaie Allen		08:29	1-2	1-2	0-0	0	0	0	1	0	3	0	0	0	0	0	-3
0	Jacob Toppin		11:34	2-4	0-1	2-3	2	1	3	2	2	6	0	1	0	0	0	-7
Team							1	5	6			0		1				
Totals				22-61	3-21	15-20	13	30	43	26	15	62	8	16	7	12	4	-3

Shooting By Period		
1 st FG%	14-31	45.2%
3PT%	1-7	14.3%
FT%	6-9	66.7%
2 nd FG%	8-30	26.7%
3PT%	2-14	14.3%
FT%	9-11	81.8%
GM FG%	22-61	36.1%
3PT%	3-21	14.3%
FT%	15-20	75.0%

Dead Ball Rebounds: 2, 0

Technical Fouls: NONE

	KU	KEN
Biggest lead	5 (2 nd 2:26)	13 (1 st 6:12)
Best Scoring Run	10 (2 nd 12:46)	15 (1 st 10:59)
Lead Changes	6	
Times Tied	8	
Time with Lead	08:30	26:14

Points from	KU	KEN
Turnovers	18	8
Paint	28	30
Second Chance	11	16
Fast Breaks	12	9
Bench	2	22

	Period by Period Scoring		
	1st	2nd	TOT
KU	29	36	65
KEN	35	27	62



Kansas at Kentucky

Period 1

Quarter Starters:

KU	0 Garrett M	2 Braun C	10 Wilson J	30 Agbaji O	33 McCormack D
KEN	2 Askew D	3 Boston Jr. B	5 Clarke T	23 Jackson I	30 Sarr O

Game Time	KU	Score	Diff	KEN
20:00	33 MCCORMACK D jumpball won			30 SARR O jumpball lost
19:42	2 BRAUN C 2pt FG in the paint, driving layup missed			
19:39	2 BRAUN C offensive rebound (1)			
19:33	33 MCCORMACK D foul offensive (1 - 1)			30 SARR O foul drawn (1)
19:33	33 MCCORMACK D turnover offensive (1)			
19:24	2 BRAUN C foul drawn (1)			5 CLARKE T foul offensive (1 - 1)
19:24				5 CLARKE T turnover offensive (1)
19:16	30 AGBAJI O 2pt FG from turnover in the paint, alleyoop missed			
19:13				23 JACKSON I defensive rebound (1)
19:03				5 CLARKE T 3pt FG , jump shot missed
19:01	33 MCCORMACK D defensive rebound (1)			
18:54	33 MCCORMACK D 2pt FG in the paint, turnaround jump shot missed			
18:50				30 SARR O defensive rebound (1)
18:34				5 CLARKE T 2pt FG outside the paint, floating jump shot missed
18:31	10 WILSON J defensive rebound (1)			
18:23	0 GARRETT M 2pt FG outside the paint, pull up jump shot missed			
18:22	offensive dead ball rebound (1)			
18:22	33 MCCORMACK D foul drawn (1)			23 JACKSON I foul loose ball (1 - 2)
18:16	0 GARRETT M turnover bad pass (1)			2 ASKEW D steal (1)
18:08				2 ASKEW D 3pt FG from turnover, jump shot missed
18:04	2 BRAUN C defensive rebound (2)			
17:55	10 WILSON J 2pt FG outside the paint, jump shot missed			
17:52				30 SARR O defensive rebound (2)
17:44	0 GARRETT M steal (1)			3 BOSTON JR. B turnover lost ball (1)
17:40	2 BRAUN C 3pt FG from turnover, jump shot missed			
17:37	30 AGBAJI O offensive rebound (1)			
17:37	30 AGBAJI O 2pt FG fast break from turnover second chance in the paint, layup made (2)	2-0	2	
17:19				3 BOSTON JR. B 2pt FG outside the paint, pull up jump shot missed
17:16	30 AGBAJI O defensive rebound (2)			
17:06	10 WILSON J 3pt FG , jump shot missed			
17:02				30 SARR O defensive rebound (3)
16:53				5 CLARKE T 3pt FG , step back jump shot missed
16:49				23 JACKSON I offensive rebound (2)
16:48				3 BOSTON JR. B 3pt FG second chance, jump shot missed
16:44				5 CLARKE T offensive rebound (1)
16:43		2-2	0	5 CLARKE T 2pt FG second chance in the paint, layup made (2)
16:31	30 AGBAJI O 3pt FG , pull up jump shot made (5)	5-2	3	
16:15		5-4	1	23 JACKSON I 2pt FG in the paint, dunk, made (2)
16:15				30 SARR O assist (1)
16:15	2 BRAUN C foul shooting (1 - 2)			23 JACKSON I foul drawn (1)



Kansas at Kentucky

12/01/20 Bankers Life Fieldhouse, Indianapolis
State Farm Champions Classic

Officials: Patrick Adams, Doug Sirmons, Jamie Luckie

Game Time	KU	Score	Diff	KEN
16:15	33 MCCORMACK D substitution out			
16:15	44 LIGHTFOOT M substitution in			
16:15				3 BOSTON JR. B substitution out
16:15				10 MINTZ D substitution in
16:15		5-5	0	23 JACKSON I free throw 1 - 1 made (3)
16:03	0 GARRETT M turnover bad pass (2)			10 MINTZ D steal (1)
15:57		5-7	-2	10 MINTZ D 2pt FG from turnover in the paint, driving layup made (2)
15:40	30 AGBAJI O 3pt FG , jump shot missed			
15:36				23 JACKSON I defensive rebound (3)
15:33				5 CLARKE T turnover travel (2)
15:33	Timeout media			
15:11	0 GARRETT M 2pt FG from turnover in the paint, pull up jump shot missed			
15:08	0 GARRETT M offensive rebound (1)			
15:06	30 AGBAJI O 2pt FG from turnover second chance in the paint, layup blocked			
15:06				23 JACKSON I block (1)
15:05				defensive rebound (8)
15:05	0 GARRETT M substitution out			
15:05	24 THOMPSON B substitution in			
15:05				23 JACKSON I substitution out
15:05				21 FLETCHER C substitution in
14:40				30 SARR O 2pt FG outside the paint, turnaround jump shot missed
14:36				30 SARR O offensive rebound (4)
14:36		5-9	-4	30 SARR O 2pt FG second chance in the paint, layup made (2)
14:12	10 WILSON J turnover lost ball (1)			21 FLETCHER C steal (1)
14:07				10 MINTZ D 3pt FG from turnover, jump shot missed
14:03	10 WILSON J defensive rebound (2)			
13:49	10 WILSON J foul drawn (1)			21 FLETCHER C foul personal (1 - 3)
13:49	10 WILSON J substitution out			
13:49	44 LIGHTFOOT M substitution out			
13:49	13 ENARUNA T substitution in			
13:49	33 MCCORMACK D substitution in			
13:49				5 CLARKE T substitution out
13:49				3 BOSTON JR. B substitution in
13:43	2 BRAUN C foul drawn (2)			30 SARR O foul shooting (1 - 4)
13:43	2 BRAUN C free throw 1 - 2 missed			
13:43	offensive dead ball rebound (2)			
13:43	2 BRAUN C free throw 2 - 2 missed			
13:40				defensive rebound (10)
13:10				2 ASKEW D 2pt FG in the paint, turnaround jump shot missed
13:09	defensive rebound (9)			
13:09	2 BRAUN C substitution out			
13:09	0 GARRETT M substitution in			
13:09				30 SARR O substitution out
13:09				55 WARE L substitution in
13:04	0 GARRETT M turnover bad pass (3)			55 WARE L steal (1)
12:57	24 THOMPSON B foul shooting (1 - 3)			10 MINTZ D foul drawn (1)



Kansas at Kentucky

12/01/20 Bankers Life Fieldhouse, Indianapolis
State Farm Champions Classic

Officials: Patrick Adams, Doug Sirmons, Jamie Luckie

Game Time	KU	Score	Diff	KEN
12:57				10 MINTZ D free throw fast break 1 - 2 missed
12:57				offensive dead ball rebound (1)
12:57				10 MINTZ D free throw fast break 2 - 2 missed
12:56				10 MINTZ D offensive rebound (1)
12:53		5-11	-6	3 BOSTON JR. B 2pt FG from turnover second chance in the paint, dunk, made (2)
12:53				10 MINTZ D assist (1)
12:50	Timeout 30 Sec			
12:50	13 ENARUNA T substitution out			
12:50	10 WILSON J substitution in			
12:36	30 AGBAJI O turnover bad pass (1)			3 BOSTON JR. B steal (1)
12:29				10 MINTZ D 3pt FG from turnover, jump shot missed
12:24				10 MINTZ D offensive rebound (2)
12:04		5-13	-8	3 BOSTON JR. B 2pt FG from turnover second chance in the paint, driving layup made (4)
11:44	10 WILSON J 2pt FG in the paint, driving layup missed			
11:41	33 MCCORMACK D offensive rebound (2)			
11:40	33 MCCORMACK D turnover lost ball (2)			21 FLETCHER C steal (2)
11:40	Timeout media			
11:40	24 THOMPSON B substitution out			
11:40	33 MCCORMACK D substitution out			
11:40	2 BRAUN C substitution in			
11:40	3 HARRIS D substitution in			
11:40				2 ASKEW D substitution out
11:40				21 FLETCHER C substitution out
11:40				5 CLARKE T substitution in
11:40				23 JACKSON I substitution in
11:28	3 HARRIS D steal (1)			10 MINTZ D turnover bad pass (1)
11:18	30 AGBAJI O 2pt FG from turnover in the paint, driving layup missed			
11:16				23 JACKSON I defensive rebound (4)
11:13	3 HARRIS D foul shooting (1 - 4)			10 MINTZ D foul drawn (2)
11:13		5-14	-9	10 MINTZ D free throw fast break 1 - 2 made (3)
11:13		5-15	-10	10 MINTZ D free throw fast break 2 - 2 made (4)
11:02	10 WILSON J turnover bad pass (2)			10 MINTZ D steal (2)
10:59		5-17	-12	10 MINTZ D 2pt FG fast break from turnover in the paint, dunk, made (6)
10:56	Timeout 30 Sec			
10:56	10 WILSON J substitution out			
10:56	24 THOMPSON B substitution in			
10:27	24 THOMPSON B 2pt FG in the paint, driving layup blocked			
10:27				55 WARE L block (1)
10:23				23 JACKSON I defensive rebound (5)
10:19				3 BOSTON JR. B 2pt FG in the paint, driving layup missed
10:14	30 AGBAJI O defensive rebound (3)			
10:09	30 AGBAJI O 3pt FG , step back jump shot missed			
10:04				23 JACKSON I defensive rebound (6)
09:51				3 BOSTON JR. B 2pt FG in the paint, driving layup blocked
09:51	2 BRAUN C block (1)			
09:49	30 AGBAJI O defensive rebound (4)			



Kansas at Kentucky

12/01/20 Bankers Life Fieldhouse, Indianapolis
State Farm Champions Classic

Officials: Patrick Adams, Doug Sirmons, Jamie Luckie

Game Time	KU	Score	Diff	KEN
09:41	0 GARRETT M 2pt FG in the paint, driving layup made (2)	7-17	-10	
09:41	30 AGBAJI O assist (1)			
09:30	3 HARRIS D steal (2)			10 MINTZ D turnover bad pass (2)
09:26	0 GARRETT M 2pt FG fast break from turnover in the paint, dunk, made (4)	9-17	-8	
09:26	3 HARRIS D assist (1)			
09:26				Timeout 30 Sec
09:26	30 AGBAJI O substitution out			
09:26	33 MCCORMACK D substitution in			
09:26				10 MINTZ D substitution out
09:26				55 WARE L substitution out
09:26				2 ASKEW D substitution in
09:26				30 SARR O substitution in
09:09	24 THOMPSON B foul personal (2 - 5)			23 JACKSON I foul drawn (2)
09:09	0 GARRETT M substitution out			
09:09	1 GRANT-FOSTER T substitution in			
09:02		9-19	-10	30 SARR O 2pt FG outside the paint, jump shot made (4)
09:02				2 ASKEW D assist (1)
08:47	33 MCCORMACK D 2pt FG in the paint, layup blocked			
08:47				23 JACKSON I block (2)
08:47				23 JACKSON I defensive rebound (7)
08:47	jump ball situation			
08:28		9-21	-12	30 SARR O 2pt FG in the paint, layup made (6)
08:14	2 BRAUN C 2pt FG in the paint, layup blocked			
08:14				30 SARR O block (1)
08:11				2 ASKEW D defensive rebound (1)
08:07				2 ASKEW D turnover bad pass (1)
07:57	1 GRANT-FOSTER T 3pt FG from turnover, jump shot blocked			
07:57				23 JACKSON I block (3)
07:52	1 GRANT-FOSTER T offensive rebound (1)			
07:48	24 THOMPSON B 3pt FG from turnover second chance, jump shot missed			
07:45	offensive dead ball rebound (3)			
07:45	33 MCCORMACK D foul drawn (2)			30 SARR O foul loose ball (2 - 5)
07:45				Timeout media
07:45	24 THOMPSON B substitution out			
07:45	30 AGBAJI O substitution in			
07:45				3 BOSTON JR. B substitution out
07:45				30 SARR O substitution out
07:45				11 ALLEN D substitution in
07:45				21 FLETCHER C substitution in
07:37	33 MCCORMACK D 2pt FG from turnover second chance outside the paint, turnaround jump shot missed			
07:34	2 BRAUN C offensive rebound (3)			
07:33	2 BRAUN C 2pt FG from turnover second chance in the paint, layup blocked			
07:33				5 CLARKE T block (1)
07:33	2 BRAUN C offensive rebound (4)			
07:33	jump ball situation			
07:33	1 GRANT-FOSTER T substitution out			



Kansas at Kentucky

12/01/20 Bankers Life Fieldhouse, Indianapolis
State Farm Champions Classic

Officials: Patrick Adams, Doug Sirmons, Jamie Luckie

Game Time	KU	Score	Diff	KEN
07:33	0 GARRETT M substitution in			
07:33				23 JACKSON I substitution out
07:33				55 WARE L substitution in
07:22	33 MCCORMACK D 2pt FG second chance in the paint, layup made (2)	11-21	-10	
06:57		11-23	-12	2 ASKEW D 2pt FG in the paint, pull up jump shot made (2)
06:41	30 AGBAJI O foul drawn (1)			11 ALLEN D foul personal (1 - 6)
06:36	0 GARRETT M 2pt FG in the paint, driving layup made (6)	13-23	-10	
06:12		13-26	-13	11 ALLEN D 3pt FG , jump shot made (3)
06:12				55 WARE L assist (1)
05:55	33 MCCORMACK D foul drawn (3)			2 ASKEW D foul shooting (1 - 7)
05:55	33 MCCORMACK D free throw 1 - 2 made (3)	14-26	-12	
05:55				2 ASKEW D substitution out
05:55				10 MINTZ D substitution in
05:55	33 MCCORMACK D free throw 2 - 2 made (4)	15-26	-11	
05:55	33 MCCORMACK D substitution out			
05:55	10 WILSON J substitution in			
05:55				55 WARE L substitution out
05:55				23 JACKSON I substitution in
05:36		15-28	-13	23 JACKSON I 2pt FG in the paint, layup made (5)
05:36				5 CLARKE T assist (1)
05:14	30 AGBAJI O 3pt FG , pull up jump shot made (8)	18-28	-10	
04:52		18-30	-12	5 CLARKE T 2pt FG in the paint, pull up jump shot made (4)
04:36	2 BRAUN C 2pt FG in the paint, driving layup made (2)	20-30	-10	
04:29				5 CLARKE T 2pt FG outside the paint, pull up jump shot missed
04:26				23 JACKSON I offensive rebound (8)
04:20		20-32	-12	23 JACKSON I 2pt FG second chance in the paint, hook shot made (7)
03:57	10 WILSON J 2pt FG in the paint, layup made (2)	22-32	-10	
03:43	Timeout media			
03:43				11 ALLEN D substitution out
03:43				3 BOSTON JR. B substitution in
03:25				turnover shot clock (7)
03:25				10 MINTZ D substitution out
03:25				2 ASKEW D substitution in
03:09	0 GARRETT M 2pt FG from turnover in the paint, driving layup blocked			
03:09				23 JACKSON I block (4)
03:08	offensive rebound (16)			
03:08				21 FLETCHER C substitution out
03:08				0 TOPPIN J substitution in
03:01	0 GARRETT M 2pt FG from turnover second chance outside the paint, step back jump shot made (8)	24-32	-8	
02:46				3 BOSTON JR. B 2pt FG in the paint, driving layup missed
02:43	0 GARRETT M defensive rebound (2)			
02:41	30 AGBAJI O 3pt FG , jump shot missed			
02:34	offensive dead ball rebound (4)			
02:34	10 WILSON J foul drawn (2)			0 TOPPIN J foul loose ball (1 - 8)
02:34	10 WILSON J 1&1 free throw 1 missed			
02:33				23 JACKSON I defensive rebound (9)



Kansas at Kentucky

12/01/20 Bankers Life Fieldhouse, Indianapolis
State Farm Champions Classic

Officials: Patrick Adams, Doug Sirmons, Jamie Luckie

Game Time	KU	Score	Diff	KEN
02:22				23 JACKSON I 2pt FG outside the paint, jump shot missed
02:19	2 BRAUN C defensive rebound (5)			
02:06	2 BRAUN C 2pt FG in the paint, dunk, made (4)	26-32	-6	
02:06	3 HARRIS D assist (2)			
02:04	2 BRAUN C foul class A technical (2 - 6)			
02:04		26-33	-7	2 ASKEW D free throw 1 - 2 made (3)
02:04		26-34	-8	2 ASKEW D free throw 2 - 2 made (4)
01:41				23 JACKSON I 2pt FG in the paint, turnaround jump shot missed
01:39	10 WILSON J defensive rebound (3)			
01:36	30 AGBAJI O 3pt FG , jump shot missed			
01:32				3 BOSTON JR. B defensive rebound (1)
01:14	2 BRAUN C steal (1)			2 ASKEW D turnover bad pass (2)
01:10	2 BRAUN C foul drawn (3)			2 ASKEW D foul personal (2 - 9)
01:10				2 ASKEW D substitution out
01:10				10 MINTZ D substitution in
01:10	2 BRAUN C 1&1 free throw 1 made (5)	27-34	-7	
01:10	2 BRAUN C 1&1 free throw 2 missed			
01:09				23 JACKSON I defensive rebound (10)
00:49				10 MINTZ D 2pt FG outside the paint, pull up jump shot missed
00:46	2 BRAUN C defensive rebound (6)			
00:41	30 AGBAJI O foul drawn (2)			23 JACKSON I foul personal (2 - 10)
00:41	30 AGBAJI O free throw 1 - 2 made (9)	28-34	-6	
00:41	2 BRAUN C substitution out			
00:41	13 ENARUNA T substitution in			
00:41				0 TOPPIN J substitution out
00:41				23 JACKSON I substitution out
00:41				21 FLETCHER C substitution in
00:41				55 WARE L substitution in
00:41	30 AGBAJI O free throw 2 - 2 made (10)	29-34	-5	
00:27	10 WILSON J foul personal (1 - 7)			55 WARE L foul drawn (1)
00:27		29-35	-6	55 WARE L 1&1 free throw 1 made (1)
00:27				55 WARE L 1&1 free throw 2 missed
00:26	0 GARRETT M defensive rebound (3)			
00:00	30 AGBAJI O 2pt FG outside the paint, turnaround jump shot missed			
00:00	offensive rebound (22)			
END OF PERIOD				
KU 29-35 KEN				



Kansas at Kentucky

12/01/20 Bankers Life Fieldhouse, Indianapolis
State Farm Champions Classic

Game Time: 9:30 PM
Game Duration: 2:14

Officials: Patrick Adams, Doug Sirmons, Jamie Luckie

Kansas - 29

NO.	Name	F	Min	FG	3P	FT	Rebounds			Fouls		TP	AS	TO	ST	Blocks		+/-	
				M-A	M-A	M-A	OR	DR	TOT	PF	FD					BS	BA		
10	Jalen Wilson	F	14:00	1-4	0-1	0-1	0	3	3	1	2	2	0	2	0	0	0	0	-5
33	David McCormack	F	09:25	1-4	0-0	2-2	1	1	2	1	3	4	0	2	0	0	1	0	-6
0	Marcus Garrett	G	16:28	4-7	0-0	0-0	1	2	3	0	0	8	0	3	1	0	1	0	
2	Christian Braun	G	17:49	2-6	0-1	1-4	3	3	6	2	3	5	0	0	1	1	2	-2	
30	Ochai Agbaji	G	18:19	3-11	2-6	2-2	1	3	4	0	2	10	1	1	0	0	1	-2	
44	Mitch Lightfoot		02:26	0-0	0-0	0-0	0	0	0	0	0	0	0	0	0	0	0	-5	
24	Bryce Thompson		06:36	0-2	0-1	0-0	0	0	0	2	0	0	0	0	0	0	1	-6	
13	Tristan Enaruna		01:41	0-0	0-0	0-0	0	0	0	0	0	0	0	0	0	0	0	-2	
3	Dajuan Harris		11:40	0-0	0-0	0-0	0	0	0	1	0	0	2	0	2	0	0	2	
1	Tyon Grant-Foster		01:36	0-1	0-1	0-0	1	0	1	0	0	0	0	0	0	0	1	-4	
Team							2	1	3			0		0					
Totals				11-35	2-10	5-9	9	13	22	7	10	29	3	8	4	1	7	-6	

Shooting By Period		
1 st FG%	11-35	31.4%
3PT%	2-10	20.0%
FT%	5-9	55.6%
GM FG%	11-35	31.4%
3PT%	2-10	20.0%
FT%	5-9	55.6%

Dead Ball Rebounds: 4, 0

Technical Fouls: Braun 1st2:04

Kentucky - 35

NO.	Name	F	Min	FG	3P	FT	Rebounds			Fouls		TP	AS	TO	ST	Blocks		+/-
				M-A	M-A	M-A	OR	DR	TOT	PF	FD					BS	BA	
23	Isaiah Jackson	F	14:15	3-5	0-0	1-1	2	8	10	2	2	7	0	0	0	4	0	1
30	Olivier Sarr	F	08:32	3-4	0-0	0-0	1	3	4	2	1	6	1	0	0	1	0	8
2	Devin Askew	G	14:06	1-3	0-1	2-2	0	1	1	2	0	4	1	2	1	0	0	10
3	Brandon Boston Jr.	G	13:32	2-7	0-1	0-0	0	1	1	0	0	4	0	1	1	0	1	3
5	Terrence Clarke	G	17:51	2-6	0-2	0-0	1	0	1	1	0	4	1	2	0	1	0	2
10	Davion Mintz		10:29	2-5	0-2	2-4	2	0	2	0	2	6	1	2	2	0	0	5
21	Cam'Ron Fletcher		08:44	0-0	0-0	0-0	0	0	0	1	0	0	0	0	2	0	0	4
55	Lance Ware		06:03	0-0	0-0	1-2	0	0	0	0	1	1	1	0	1	1	0	3
11	Dontaie Allen		04:02	1-1	1-1	0-0	0	0	0	1	0	3	0	0	0	0	0	-2
0	Jacob Toppin		02:26	0-0	0-0	0-0	0	0	0	1	0	0	0	0	0	0	0	-4
Team							0	2	2			0		1				
Totals				14-31	1-7	6-9	6	15	21	10	6	35	5	8	7	7	1	6

Shooting By Period		
1 st FG%	14-31	45.2%
3PT%	1-7	14.3%
FT%	6-9	66.7%
GM FG%	14-31	45.2%
3PT%	1-7	14.3%
FT%	6-9	66.7%

Dead Ball Rebounds: 1, 0

Technical Fouls: NONE

	KU	KEN
Biggest lead	3 (1 st 16:31)	13 (1 st 6:12)
Best Scoring Run	6 (1 st 2:06)	15 (1 st 10:59)
Lead Changes	1	
Times Tied	2	
Time with Lead	01:10	15:57

Points from	KU	KEN
Turnovers	7	8
Paint	16	24
Second Chance	6	10
Fast Breaks	4	4
Bench	0	10

	Period by Period Scoring		
	1st	2nd	TOT
KU	29	36	65
KEN	35	27	62



Kansas at Kentucky

12/01/20 Bankers Life Fieldhouse, Indianapolis
State Farm Champions Classic

Officials: Patrick Adams, Doug Sirmons, Jamie Luckie

Period 2

Quarter Starters:

KU	0 Garrett M	2 Braun C	10 Wilson J	30 Agbaji O	33 McCormack D
KEN	2 Askew D	3 Boston Jr. B	5 Clarke T	23 Jackson I	30 Sarr O

Game Time	KU	Score	Diff	KEN
20:00	3 HARRIS D substitution out			
20:00	13 ENARUNA T substitution out			
20:00	2 BRAUN C substitution in			
20:00	33 MCCORMACK D substitution in			
20:00				10 MINTZ D substitution out
20:00				21 FLETCHER C substitution out
20:00				55 WARE L substitution out
20:00				2 ASKEW D substitution in
20:00				23 JACKSON I substitution in
20:00				30 SARR O substitution in
19:45	0 GARRETT M foul personal (1 - 1)			2 ASKEW D foul drawn (1)
19:45	foul coach class A technical (2)			
19:45		29-36	-7	2 ASKEW D free throw 1 - 2 made (5)
19:45				2 ASKEW D free throw 2 - 2 missed
19:45				offensive dead ball rebound (2)
19:30		29-38	-9	5 CLARKE T 2pt FG second chance outside the paint, pull up jump shot made (6)
19:14	33 MCCORMACK D 2pt FG in the paint, layup blocked			
19:14				30 SARR O block (2)
19:14	offensive rebound (23)			
19:10	10 WILSON J 2pt FG second chance outside the paint, jump shot missed			
19:06				30 SARR O defensive rebound (5)
18:55				5 CLARKE T 2pt FG in the paint, driving layup blocked
18:55	2 BRAUN C block (2)			
18:51	10 WILSON J defensive rebound (4)			
18:40	10 WILSON J foul offensive (2 - 3)			30 SARR O foul drawn (2)
18:40	10 WILSON J turnover offensive (3)			
18:23				3 BOSTON JR. B 3pt FG from turnover, jump shot missed
18:21	2 BRAUN C defensive rebound (7)			
18:21	2 BRAUN C foul drawn (4)			30 SARR O foul personal (3 - 1)
18:21				30 SARR O substitution out
18:21				55 WARE L substitution in
18:04	10 WILSON J 2pt FG in the paint, driving layup made (4)	31-38	-7	
17:46				5 CLARKE T 3pt FG , jump shot missed
17:44	defensive dead ball rebound (5)			
17:44	10 WILSON J foul drawn (3)			55 WARE L foul loose ball (1 - 2)
17:44				55 WARE L substitution out
17:44				21 FLETCHER C substitution in
17:29	33 MCCORMACK D 2pt FG in the paint, turnaround jump shot missed			
17:26	10 WILSON J offensive rebound (5)			
17:26	10 WILSON J 2pt FG second chance in the paint, layup missed			
17:26				defensive rebound (23)



Kansas at Kentucky

12/01/20 Bankers Life Fieldhouse, Indianapolis
State Farm Champions Classic

Officials: Patrick Adams, Doug Sirmons, Jamie Luckie

Game Time	KU	Score	Diff	KEN
16:59				21 FLETCHER C 3pt FG , jump shot missed
16:55	10 WILSON J defensive rebound (6)			
16:44	0 GARRETT M 2pt FG in the paint, pull up jump shot blocked			
16:44				23 JACKSON I block (5)
16:40				21 FLETCHER C defensive rebound (1)
16:39	2 BRAUN C foul drawn (5)			5 CLARKE T foul offensive (2 - 3)
16:39				5 CLARKE T turnover offensive (3)
16:24	33 MCCORMACK D foul drawn (4)			21 FLETCHER C foul shooting (2 - 4)
16:24	33 MCCORMACK D free throw 1 - 2 made (5)	32-38	-6	
16:24	33 MCCORMACK D free throw 2 - 2 made (6)	33-38	-5	
16:07				21 FLETCHER C 3pt FG , jump shot missed
16:04	0 GARRETT M defensive rebound (4)			
15:51	30 AGBAJI O 2pt FG in the paint, driving layup missed			
15:49				21 FLETCHER C defensive rebound (2)
15:45				3 BOSTON JR. B turnover travel (2)
15:45	Timeout media			
15:26	0 GARRETT M 3pt FG from turnover, jump shot missed			
15:22	10 WILSON J offensive rebound (7)			
15:22	10 WILSON J 2pt FG from turnover second chance in the paint, layup made (6)	35-38	-3	
15:02				5 CLARKE T 2pt FG outside the paint, pull up jump shot missed
15:00				3 BOSTON JR. B offensive rebound (2)
14:58				23 JACKSON I 2pt FG second chance in the paint, jump shot missed
14:55	10 WILSON J defensive rebound (8)			
14:45	33 MCCORMACK D 2pt FG in the paint, layup blocked			
14:45				23 JACKSON I block (6)
14:38	2 BRAUN C offensive rebound (8)			
14:37	2 BRAUN C 3pt FG second chance, jump shot missed			
14:33	offensive rebound (32)			
14:33	0 GARRETT M substitution out			
14:33	3 HARRIS D substitution in			
14:33				3 BOSTON JR. B substitution out
14:33				21 FLETCHER C substitution out
14:33				0 TOPPIN J substitution in
14:33				10 MINTZ D substitution in
14:33				23 JACKSON I substitution out
14:33				55 WARE L substitution in
14:25	33 MCCORMACK D 2pt FG second chance in the paint, layup missed			
14:24	10 WILSON J offensive rebound (9)			
14:24	10 WILSON J foul drawn (4)			5 CLARKE T foul shooting (3 - 5)
14:24	10 WILSON J free throw 1 - 2 missed			
14:24	offensive dead ball rebound (6)			
14:24				5 CLARKE T substitution out
14:24				11 ALLEN D substitution in
14:24	10 WILSON J free throw 2 - 2 made (7)	36-38	-2	
13:54				2 ASKEW D 3pt FG , pull up jump shot missed
13:50	10 WILSON J defensive rebound (10)			
13:43	33 MCCORMACK D foul drawn (5)			2 ASKEW D foul personal (3 - 6)



Kansas at Kentucky

12/01/20 Bankers Life Fieldhouse, Indianapolis
State Farm Champions Classic

Officials: Patrick Adams, Doug Sirmons, Jamie Luckie

Game Time	KU	Score	Diff	KEN
13:43				2 ASKEW D substitution out
13:43				3 BOSTON JR. B substitution in
13:37	10 WILSON J foul drawn (5)			55 WARE L foul shooting (2 - 7)
13:37	10 WILSON J free throw 1 - 2 made (8)	37-38	-1	
13:37				0 TOPPIN J substitution out
13:37				55 WARE L substitution out
13:37				23 JACKSON I substitution in
13:37				30 SARR O substitution in
13:37	10 WILSON J free throw 2 - 2 missed			
13:36	2 BRAUN C offensive rebound (9)			
13:28	10 WILSON J 3pt FG second chance, jump shot missed			
13:23				3 BOSTON JR. B defensive rebound (3)
12:56				Timeout 30 Sec
12:56	Timeout media			
12:56	33 MCCORMACK D substitution out			
12:56	0 GARRETT M substitution in			
12:53				3 BOSTON JR. B 3pt FG , step back jump shot missed
12:48	2 BRAUN C defensive rebound (10)			
12:46	2 BRAUN C foul drawn (6)			30 SARR O foul shooting (4 - 8)
12:46	2 BRAUN C free throw fast break 1 - 2 made (6)	38-38	0	
12:46				11 ALLEN D substitution out
12:46				30 SARR O substitution out
12:46				5 CLARKE T substitution in
12:46				21 FLETCHER C substitution in
12:46	2 BRAUN C free throw fast break 2 - 2 made (7)	39-38	1	
12:23	0 GARRETT M foul personal (2 - 4)			10 MINTZ D foul drawn (3)
12:18				10 MINTZ D 2pt FG in the paint, jump shot missed
12:16				23 JACKSON I offensive rebound (11)
12:16	10 WILSON J foul personal (3 - 5)			23 JACKSON I foul drawn (3)
12:02		39-40	-1	3 BOSTON JR. B 2pt FG second chance in the paint, driving layup made (6)
11:37	10 WILSON J 2pt FG in the paint, driving layup made (10)	41-40	1	
11:37	3 HARRIS D assist (3)			
11:37	10 WILSON J foul drawn (6)			21 FLETCHER C foul shooting (3 - 9)
11:37	Timeout media			
11:37				10 MINTZ D substitution out
11:37				21 FLETCHER C substitution out
11:37				0 TOPPIN J substitution in
11:37				2 ASKEW D substitution in
11:37	10 WILSON J free throw 1 - 1 made (11)	42-40	2	
11:14	2 BRAUN C steal (2)			2 ASKEW D turnover bad pass (3)
10:55	10 WILSON J 2pt FG from turnover in the paint, driving layup missed			
10:53				3 BOSTON JR. B defensive rebound (4)
10:46				2 ASKEW D 2pt FG in the paint, driving layup blocked
10:46	3 HARRIS D block (1)			
10:42				2 ASKEW D offensive rebound (2)
10:30				3 BOSTON JR. B turnover travel (3)
10:13	30 AGBAJI O turnover travel (2)			
10:03	3 HARRIS D steal (3)			2 ASKEW D turnover lost ball (4)



Kansas at Kentucky

12/01/20 Bankers Life Fieldhouse, Indianapolis
State Farm Champions Classic

Officials: Patrick Adams, Doug Sirmons, Jamie Luckie

Game Time	KU	Score	Diff	KEN
10:00	10 WILSON J foul drawn (7)			23 JACKSON I foul shooting (3 - 10)
10:00	10 WILSON J free throw fast break 1 - 2 made (12)	43-40	3	
10:00				2 ASKEW D substitution out
10:00				10 MINTZ D substitution in
10:00	10 WILSON J free throw fast break 2 - 2 made (13)	44-40	4	
09:35				3 BOSTON JR. B 2pt FG outside the paint, pull up jump shot missed
09:31				0 TOPPIN J offensive rebound (1)
09:31		44-42	2	0 TOPPIN J 2pt FG second chance in the paint, jump shot made (2)
09:31	10 WILSON J foul shooting (4 - 6)			0 TOPPIN J foul drawn (1)
09:31	10 WILSON J substitution out			
09:31	33 MCCORMACK D substitution in			
09:31				23 JACKSON I substitution out
09:31				55 WARE L substitution in
09:31				0 TOPPIN J free throw 1 - 1 missed
09:29				offensive rebound (32)
09:19				0 TOPPIN J 2pt FG second chance outside the paint, pull up jump shot missed
09:15	0 GARRETT M defensive rebound (5)			
09:10	30 AGBAJI O 3pt FG , jump shot missed			
09:07	offensive rebound (38)			
09:07	30 AGBAJI O substitution out			
09:07	24 THOMPSON B substitution in			
09:02	2 BRAUN C 3pt FG second chance, step back jump shot missed			
08:59				defensive rebound (33)
08:41				3 BOSTON JR. B 3pt FG , step back jump shot missed
08:36	33 MCCORMACK D defensive rebound (3)			
08:24	3 HARRIS D 2pt FG outside the paint, pull up jump shot missed			
08:20				55 WARE L defensive rebound (1)
08:17		44-44	0	0 TOPPIN J 2pt FG fast break in the paint, layup made (4)
08:17				10 MINTZ D assist (2)
08:02	33 MCCORMACK D 2pt FG outside the paint, turnaround jump shot missed			
07:59				3 BOSTON JR. B defensive rebound (5)
07:48	Timeout media			
07:48	3 HARRIS D substitution out			
07:48	30 AGBAJI O substitution in			
07:48				3 BOSTON JR. B substitution out
07:48				11 ALLEN D substitution in
07:34				11 ALLEN D 3pt FG , jump shot missed
07:31	33 MCCORMACK D defensive rebound (4)			
07:15	30 AGBAJI O 2pt FG in the paint, turnaround jump shot missed			
07:14	33 MCCORMACK D offensive rebound (5)			
07:14	33 MCCORMACK D foul drawn (6)			55 WARE L foul shooting (3 - 11)
07:14	33 MCCORMACK D free throw 1 - 2 made (7)	45-44	1	
07:14				55 WARE L substitution out
07:14				23 JACKSON I substitution in
07:14	33 MCCORMACK D free throw 2 - 2 missed			
07:13				23 JACKSON I defensive rebound (12)



Kansas at Kentucky

12/01/20 Bankers Life Fieldhouse, Indianapolis
State Farm Champions Classic

Officials: Patrick Adams, Doug Sirmons, Jamie Luckie

Game Time	KU	Score	Diff	KEN
07:01	24 THOMPSON B foul shooting (3 - 7)			0 TOPPIN J foul drawn (2)
07:01		45-45	0	0 TOPPIN J free throw 1 - 2 made (5)
07:01		45-46	-1	0 TOPPIN J free throw 2 - 2 made (6)
06:47	0 GARRETT M 2pt FG in the paint, driving layup blocked			
06:47				23 JACKSON I block (7)
06:44				5 CLARKE T defensive rebound (2)
06:41		45-49	-4	10 MINTZ D 3pt FG fast break, jump shot made (9)
06:41				5 CLARKE T assist (2)
06:39	Timeout 30 Sec			
06:39	33 MCCORMACK D substitution out			
06:39	3 HARRIS D substitution in			
06:39	10 WILSON J substitution in			
06:39	24 THOMPSON B substitution out			
06:20	30 AGBAJI O 3pt FG , jump shot missed			
06:17				5 CLARKE T defensive rebound (3)
06:11	30 AGBAJI O steal (1)			23 JACKSON I turnover bad pass (1)
06:00	2 BRAUN C 2pt FG from turnover in the paint, driving layup blocked			
06:00				23 JACKSON I block (8)
06:00				defensive rebound (39)
06:00				5 CLARKE T substitution out
06:00				3 BOSTON JR. B substitution in
05:47	3 HARRIS D foul drawn (1)			0 TOPPIN J foul offensive (2 - 12)
05:47				0 TOPPIN J turnover offensive (1)
05:29	10 WILSON J 3pt FG from turnover, jump shot made (16)	48-49	-1	
05:29	3 HARRIS D assist (4)			
05:09	3 HARRIS D foul shooting (2 - 8)			3 BOSTON JR. B foul drawn (1)
05:09		48-50	-2	3 BOSTON JR. B free throw 1 - 2 made (7)
05:09				11 ALLEN D substitution out
05:09				5 CLARKE T substitution in
05:09		48-51	-3	3 BOSTON JR. B free throw 2 - 2 made (8)
04:53	10 WILSON J 3pt FG , jump shot made (19)	51-51	0	
04:53	30 AGBAJI O assist (2)			
04:35				23 JACKSON I 3pt FG , jump shot missed
04:31	30 AGBAJI O defensive rebound (5)			
04:27	10 WILSON J 3pt FG , jump shot missed			
04:23				3 BOSTON JR. B defensive rebound (6)
04:19	30 AGBAJI O foul personal (1 - 9)			3 BOSTON JR. B foul drawn (2)
04:19		51-52	-1	3 BOSTON JR. B 1&1 free throw 1 made (9)
04:19				23 JACKSON I substitution out
04:19				30 SARR O substitution in
04:19		51-53	-2	3 BOSTON JR. B 1&1 free throw 2 made (10)
04:03	2 BRAUN C 3pt FG , jump shot missed			
03:59				0 TOPPIN J defensive rebound (2)
03:55				10 MINTZ D 2pt FG in the paint, driving layup missed
03:52				30 SARR O offensive rebound (6)
03:52				30 SARR O 2pt FG second chance in the paint, dunk, missed
03:51	3 HARRIS D defensive rebound (1)			
03:49	10 WILSON J 2pt FG fast break in the paint, driving layup made (21)	53-53	0	



Kansas at Kentucky

12/01/20 Bankers Life Fieldhouse, Indianapolis
State Farm Champions Classic

Officials: Patrick Adams, Doug Sirmons, Jamie Luckie

Game Time	KU	Score	Diff	KEN
03:49	30 AGBAJI O assist (3)			
03:27				10 MINTZ D 2pt FG in the paint, layup blocked
03:27	30 AGBAJI O block (1)			
03:25				0 TOPPIN J offensive rebound (3)
03:25				0 TOPPIN J 3pt FG second chance, jump shot missed
03:25	defensive rebound (44)			
03:25	3 HARRIS D foul drawn (2)			5 CLARKE T foul loose ball (4 - 13)
03:25	Timeout media			
03:25	3 HARRIS D free throw 1 - 2 made (1)	54-53	1	
03:25	3 HARRIS D free throw 2 - 2 made (2)	55-53	2	
03:25				0 TOPPIN J substitution out
03:25				23 JACKSON I substitution in
03:07		55-55	0	30 SARR O 2pt FG outside the paint, turnaround jump shot made (8)
03:07				3 BOSTON JR. B assist (1)
02:45	30 AGBAJI O 3pt FG , pull up jump shot made (13)	58-55	3	
02:45	0 GARRETT M assist (1)			
02:29	3 HARRIS D steal (4)			10 MINTZ D turnover bad pass (3)
02:26	30 AGBAJI O 2pt FG fast break from turnover in the paint, dunk, made (15)	60-55	5	
02:26	3 HARRIS D assist (5)			
02:26				Timeout 30 Sec
02:26				10 MINTZ D substitution out
02:26				2 ASKEW D substitution in
02:05	2 BRAUN C foul shooting (3 - 10)			2 ASKEW D foul drawn (2)
02:05		60-56	4	2 ASKEW D free throw 1 - 2 made (6)
02:05				30 SARR O substitution out
02:05				10 MINTZ D substitution in
02:05		60-57	3	2 ASKEW D free throw 2 - 2 made (7)
01:38	10 WILSON J 2pt FG in the paint, layup made (23)	62-57	5	
01:20		62-59	3	3 BOSTON JR. B 2pt FG outside the paint, floating jump shot made (12)
00:42	0 GARRETT M 2pt FG in the paint, driving layup missed			
00:41	offensive dead ball rebound (7)			
00:41	turnover shot clock (11)			
00:41				10 MINTZ D substitution out
00:41				30 SARR O substitution in
00:32				5 CLARKE T 3pt FG from turnover, jump shot missed
00:30	2 BRAUN C defensive rebound (11)			
00:25	30 AGBAJI O foul drawn (3)			5 CLARKE T foul personal (5 - 14)
00:25				5 CLARKE T substitution out
00:25				10 MINTZ D substitution in
00:25	30 AGBAJI O free throw 1 - 2 missed			
00:25	offensive dead ball rebound (8)			
00:25	30 AGBAJI O free throw 2 - 2 missed			
00:25	2 BRAUN C offensive rebound (12)			
00:23	2 BRAUN C foul drawn (7)			23 JACKSON I foul personal (4 - 15)
00:23	2 BRAUN C free throw 1 - 2 missed			
00:23	offensive dead ball rebound (9)			
00:23	2 BRAUN C free throw 2 - 2 made (8)	63-59	4	



Kansas at Kentucky

12/01/20 Bankers Life Fieldhouse, Indianapolis
State Farm Champions Classic

Officials: Patrick Adams, Doug Sirmons, Jamie Luckie

Game Time	KU	Score	Diff	KEN
00:12		63-62	1	10 MINTZ D 3pt FG , pull up jump shot made (12)
00:12				Timeout 60 Sec
00:12				30 SARR O substitution out
00:12				21 FLETCHER C substitution in
00:10	30 AGBAJI O foul drawn (4)			3 BOSTON JR. B foul personal (1 - 16)
00:10	30 AGBAJI O free throw 1 - 2 made (16)	64-62	2	
00:10				21 FLETCHER C substitution out
00:10				30 SARR O substitution in
00:10	30 AGBAJI O free throw 2 - 2 made (17)	65-62	3	
00:10	Timeout 60 Sec			
00:10				2 ASKEW D substitution out
00:10				11 ALLEN D substitution in
00:05				10 MINTZ D 3pt FG , pull up jump shot missed
00:01	2 BRAUN C defensive rebound (13)			
END OF GAME				
KU 65-62 KEN				



Kansas at Kentucky

12/01/20 Bankers Life Fieldhouse, Indianapolis
State Farm Champions Classic

Officials: Patrick Adams, Doug Sirmons, Jamie Luckie

Kansas - 36

NO.	Name	F	Min	FG	3P	FT	Rebounds			Fouls		TP	AS	TO	ST	Blocks		+/-
				M-A	M-A	M-A	OR	DR	TOT	PF	FD					BS	BA	
10	Jalen Wilson	F	17:08	7-12	2-4	5-7	3	4	7	3	5	21	0	1	0	0	0	15
33	David McCormack	F	09:56	0-5	0-0	3-4	1	2	3	0	3	3	0	0	0	0	2	-1
0	Marcus Garrett	G	18:23	0-4	0-1	0-0	0	2	2	2	0	0	1	0	0	0	2	7
2	Christian Braun	G	20:00	0-4	0-3	3-4	3	4	7	1	4	3	0	0	1	1	1	9
30	Ochai Agbaji	G	18:41	2-6	1-3	2-4	0	1	1	1	2	7	2	1	1	1	0	11
13	Tristan Enaruna		00:00															
3	Dajuan Harris		13:24	0-1	0-0	2-2	0	1	1	1	2	2	3	0	2	1	0	10
24	Bryce Thompson		02:28	0-0	0-0	0-0	0	0	0	1	0	0	0	0	0	0	0	-6
Team							3	1	4			0		1				
Totals				9-32	3-11	15-21	10	15	25	10	16	36	6	3	4	3	5	9

Shooting By Period		
2 nd FG%	9-32	28.1%
3PT%	3-11	27.3%
FT%	15-21	71.4%
GM FG%	9-32	28.1%
3PT%	3-11	27.3%
FT%	15-21	71.4%

Dead Ball Rebounds: 4, 1

Technical Fouls: Coach 2nd 19:45

Kentucky - 27

NO.	Name	F	Min	FG	3P	FT	Rebounds			Fouls		TP	AS	TO	ST	Blocks		+/-
				M-A	M-A	M-A	OR	DR	TOT	PF	FD					BS	BA	
23	Isaiah Jackson	F	15:53	0-2	0-1	0-0	1	1	2	2	1	0	0	1	0	4	0	-5
30	Olivier Sarr	F	05:24	1-2	0-0	0-0	1	1	2	2	1	2	0	0	0	1	0	-2
2	Devin Askew	G	10:10	0-2	0-1	3-4	1	0	1	1	2	3	0	2	0	0	1	-4
3	Brandon Boston Jr.	G	17:22	2-6	0-3	4-4	1	4	5	1	2	8	1	2	0	0	0	-12
5	Terrence Clarke	G	17:05	1-5	0-2	0-0	0	2	2	4	0	2	1	1	0	0	1	-4
55	Lance Ware		03:50	0-0	0-0	0-0	0	1	1	3	0	0	0	0	0	0	0	-3
21	Cam'Ron Fletcher		04:22	0-2	0-2	0-0	0	2	2	2	0	0	0	0	0	0	0	-6
0	Jacob Toppin		09:08	2-4	0-1	2-3	2	1	3	1	2	6	0	1	0	0	0	-3
10	Davion Mintz		12:19	2-6	2-3	0-0	0	0	0	0	1	6	1	1	0	0	1	-5
11	Dontaie Allen		04:27	0-1	0-1	0-0	0	0	0	0	0	0	0	0	0	0	0	-1
Team							1	3	4			0		0				
Totals				8-30	2-14	9-11	7	15	22	16	9	27	3	8	0	5	3	-9

Shooting By Period		
2 nd FG%	8-30	26.7%
3PT%	2-14	14.3%
FT%	9-11	81.8%
GM FG%	8-30	26.7%
3PT%	2-14	14.3%
FT%	9-11	81.8%

Dead Ball Rebounds: 1, 0

Technical Fouls: NONE

	KU	KEN
Biggest lead	5 (2 nd 2:26)	9 (2 nd 19:30)
Best Scoring Run	10 (2 nd 12:46)	5 (2 nd 6:41)
Lead Changes	5	
Times Tied	6	
Time with Lead	07:20	10:02

Points from	KU	KEN
Turnovers	11	0
Paint	12	6
Second Chance	5	6
Fast Breaks	8	5
Bench	2	12

	Period by Period Scoring		
	1st	2nd	TOT
KU	29	36	65
KEN	35	27	62



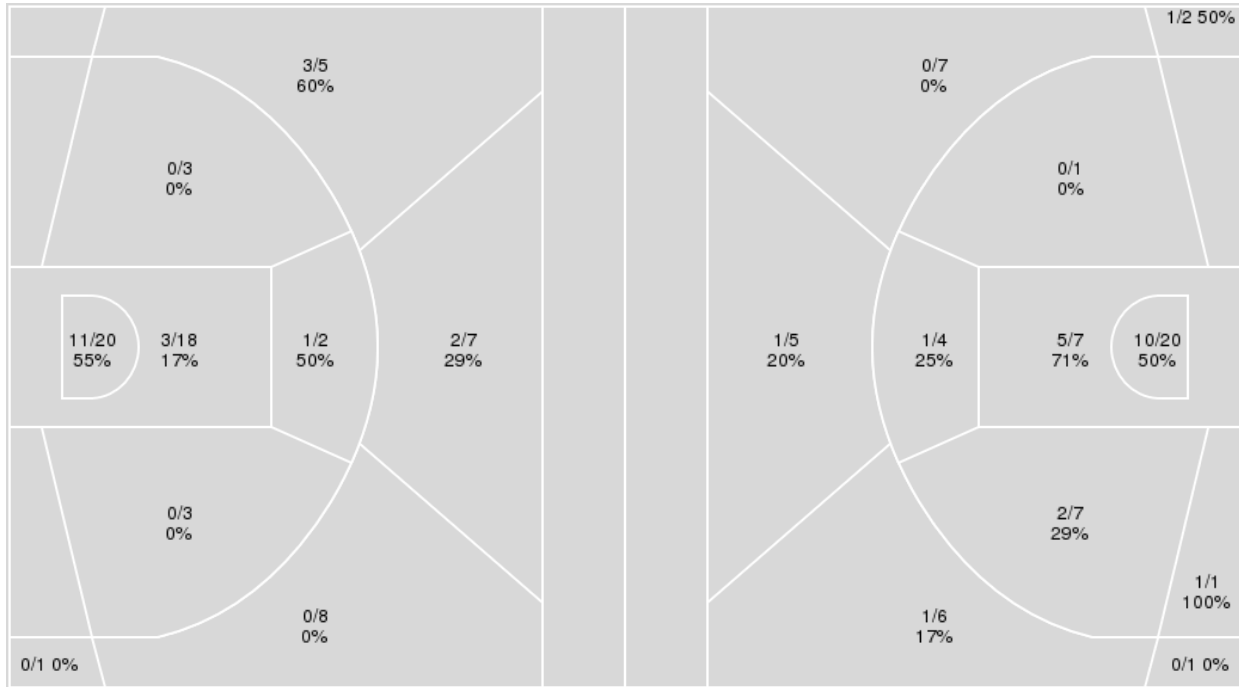
Officials: Patrick Adams, Doug Sirmons, Jamie Luckie

{ Players => 0, 1, 2, 3, 4, 10, 12, 13, 20, 24, 30, 33, 35, 44; } FG Types
 => All; Results => All;

{ Players => 0, 2, 3, 5, 10, 11, 12, 13, 14, 20, 21, 23, 25, 30, 55; } FG
 Types => All; Results => All;

Kansas

Kentucky



Kansas	M/A	%
Field Goals	20/67	30
2 Points	15/46	33
3 Points	5/21	24
Free Throws	20/30	67

Kentucky	M/A	%
Field Goals	22/61	36
2 Points	19/40	48
3 Points	3/21	14
Free Throws	15/20	75



Kansas at Kentucky

12/01/20 Bankers Life Fieldhouse, Indianapolis
State Farm Champions Classic

Officials: Patrick Adams, Doug Sirmons, Jamie Luckie

Kansas

No	Name	Mins		Score		Points Diff		Points per Min		Assists		Rebounds		Steals		Turnovers	
		On	Off	On	Off	On	Off	On	Off	On	Off	On	Off	On	Off	On	Off
0	Marcus Garrett	34:51	05:09	63 - 56	2 - 6	7	-4	1.81	0.39	9	0	39	8	8	0	10	1
1	Tyon Grant-Foster	01:36	38:24	0 - 4	65 - 58	-4	7	0.00	1.69	0	9	3	44	0	8	0	11
2	Christian Braun	37:49	02:11	64 - 57	1 - 5	7	-4	1.69	0.46	9	0	44	3	8	0	8	3
3	Dajuan Harris	25:04	14:56	53 - 41	12 - 21	12	-9	2.11	0.80	9	0	25	22	7	1	3	8
10	Jalen Wilson	31:08	08:52	54 - 44	11 - 18	10	-7	1.73	1.24	7	2	36	11	7	1	10	1
13	Tristan Enaruna	01:41	38:19	1 - 3	64 - 59	-2	5	0.59	1.67	0	9	3	44	0	8	1	10
24	Bryce Thompson	09:04	30:56	5 - 17	60 - 45	-12	15	0.55	1.94	2	7	9	38	1	7	4	7
30	Ochai Agbaji	37:00	03:00	65 - 56	0 - 6	9	-6	1.76	0.00	9	0	45	2	8	0	11	0
33	David McCormack	19:21	20:39	20 - 27	45 - 35	-7	10	1.03	2.18	0	9	29	18	1	7	6	5
44	Mitch Lightfoot	02:26	37:34	0 - 5	65 - 57	-5	8	0.00	1.73	0	9	2	45	0	8	2	9

Kentucky

No	Name	Mins		Score		Points Diff		Points per Min		Assists		Rebounds		Steals		Turnovers	
		On	Off	On	Off	On	Off	On	Off	On	Off	On	Off	On	Off	On	Off
0	Jacob Toppin	11:34	28:26	15 - 22	47 - 43	-7	4	1.30	1.65	2	6	18	25	0	7	6	10
2	Devin Askew	24:16	15:44	34 - 28	28 - 37	6	-9	1.40	1.78	4	4	23	20	6	1	10	6
3	Brandon Boston Jr.	30:54	09:06	41 - 50	21 - 15	-9	6	1.33	2.31	5	3	35	8	5	2	14	2
5	Terrence Clarke	34:56	05:04	54 - 56	8 - 9	-2	-1	1.55	1.58	7	1	39	4	4	3	15	1
10	Davion Mintz	22:48	17:12	43 - 43	19 - 22	0	-3	1.89	1.10	5	3	26	17	6	1	7	9
11	Dontaie Allen	08:29	31:31	17 - 20	45 - 45	-3	0	2.00	1.43	3	5	6	37	0	7	2	14
21	Cam'Ron Fletcher	13:06	26:54	20 - 22	42 - 43	-2	-1	1.53	1.56	3	5	10	33	4	3	3	13
23	Isaiah Jackson	30:08	09:52	47 - 51	15 - 14	-4	1	1.56	1.52	5	3	32	11	3	4	16	0
30	Olivier Sarr	13:56	26:04	23 - 17	39 - 48	6	-9	1.65	1.50	3	5	17	26	3	4	5	11
55	Lance Ware	09:53	30:07	16 - 16	46 - 49	0	-3	1.62	1.53	3	5	9	34	4	3	2	14

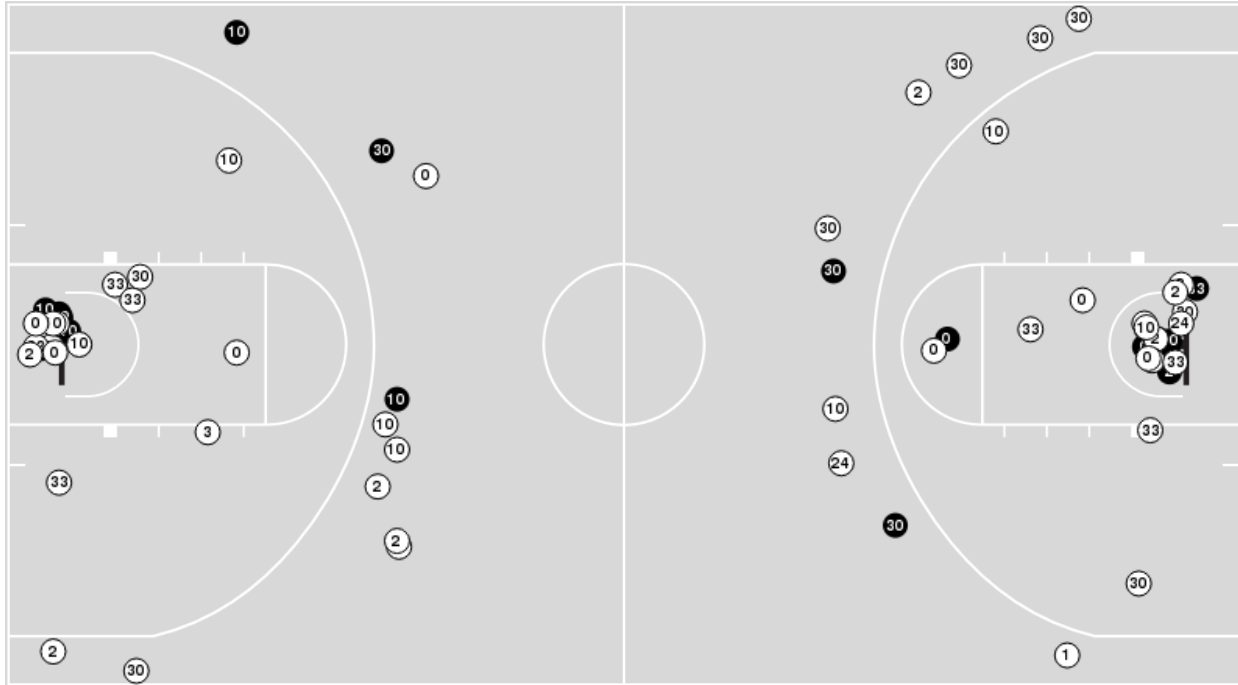


Officials: Patrick Adams, Doug Sirmons, Jamie Luckie

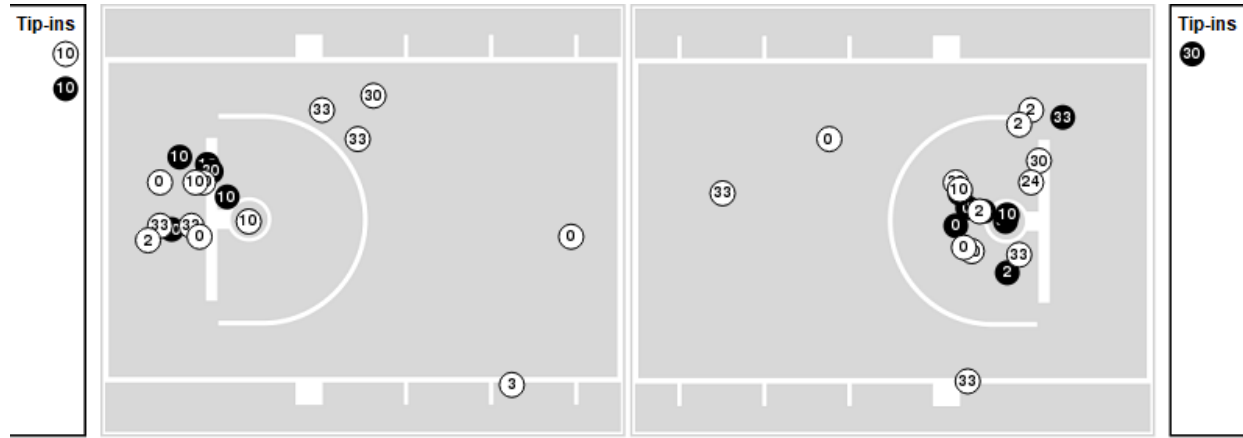
Players => 0, 1, 2, 3, 4, 10, 12, 13, 20, 24, 30, 33, 35, 44FG Types=>AllResults=>All

Kansas

All Field Goals



Blow Up Chart



● Made ○ Missed N - Player Number

Kansas	M/A	%
Field Goals	20/67	30
2 Points	15/46	33
3 Points	5/21	24
Free Throws	20/30	67

Kansas	M/A	%
Points in the Paint	28 (14 / 38)	37
Fast Break Points	12 (8/8)	100
Second Chance Points	11 (7/21)	33
Effective FG%	34	

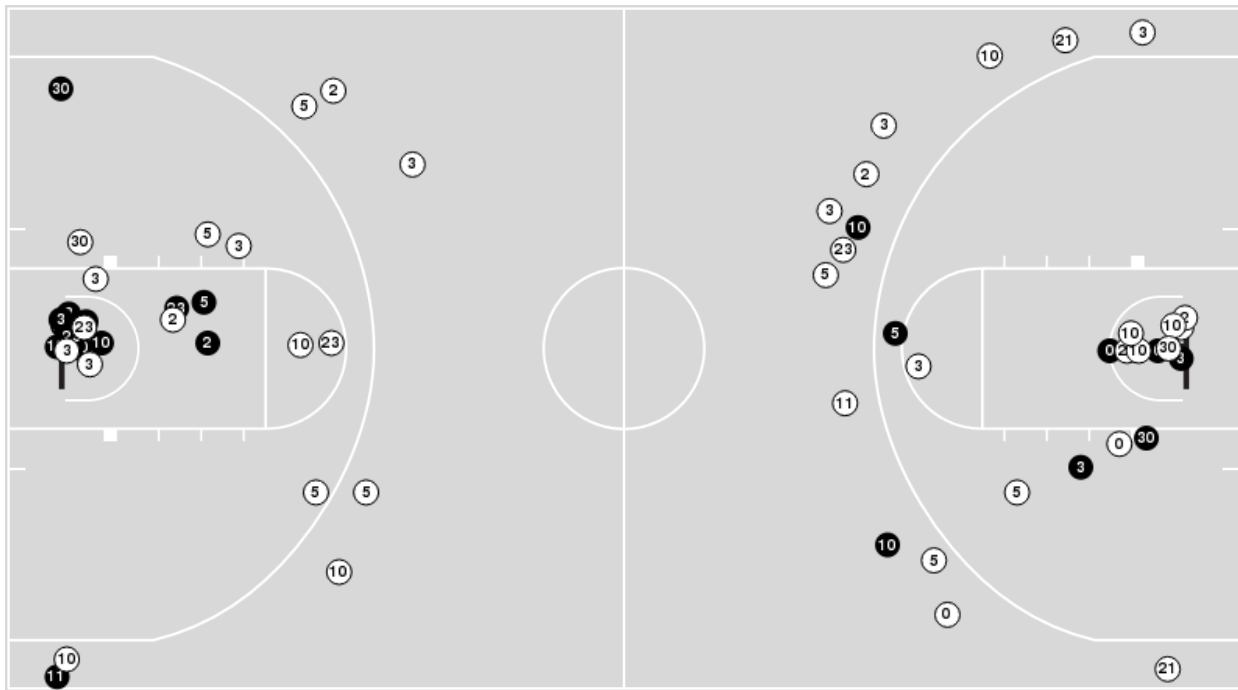


Officials: Patrick Adams, Doug Sirmons, Jamie Luckie

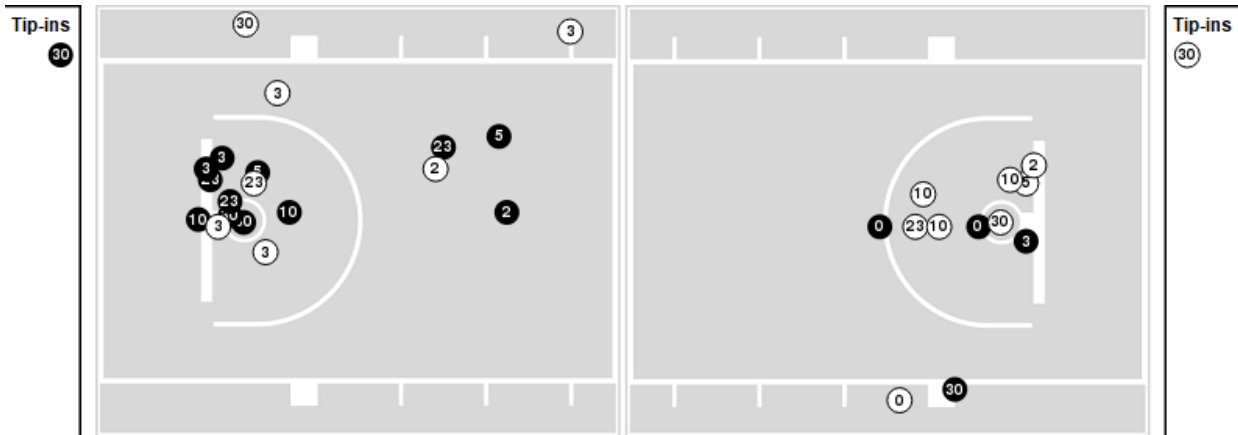
Players => 0, 2, 3, 5, 10, 11, 12, 13, 14, 20, 21, 23, 25, 30, 55FG Types=>AllResults=>All

Kentucky

All Field Goals



Blow Up Chart



● Made ○ Missed N - Player Number

Kentucky	M/A	%
Field Goals	22/61	36
2 Points	19/40	48
3 Points	3/21	14
Free Throws	15/20	75

Kentucky	M/A	%
Points in the Paint	30 (15 / 27)	56
Fast Break Points	9 (5/7)	71
Second Chance Points	16 (8/14)	57
Effective FG%	39	



Kansas at Kentucky

12/01/20 Bankers Life Fieldhouse, Indianapolis
State Farm Champions Classic

Officials: Patrick Adams, Doug Sirmons, Jamie Luckie

Kansas

Lineup	Quarter On	Time On	Quarter Off	Time Off	Time on Court	Score	Score Diff	Reb	Stl	Tov	Ass	PPP
0- Garrett M/ 2- Braun C/ 10- Wilson J/ 30- Agbaji O/ 33- McCormack D/	1	20:00	1	16:15	03:45	5-4	1	6	1	2	0	0.5556
0- Garrett M/ 2- Braun C/ 10- Wilson J/ 30- Agbaji O/ 44- Lightfoot M/	1	16:15	1	15:05	01:10	0-3	-3	1	0	1	0	0.0000
2- Braun C/ 10- Wilson J/ 24- Thompson B/ 30- Agbaji O/ 44- Lightfoot M/	1	15:05	1	13:49	01:16	0-2	-2	1	0	1	0	0.0000
2- Braun C/ 13- Enaruna T/ 24- Thompson B/ 30- Agbaji O/ 33- McCormack D/	1	13:49	1	13:09	00:40	0-0	0	1	0	0	0	0.0000
0- Garrett M/ 13- Enaruna T/ 24- Thompson B/ 30- Agbaji O/ 33- McCormack D/	1	13:09	1	12:50	00:19	0-2	-2	0	0	1	0	0.0000
0- Garrett M/ 10- Wilson J/ 24- Thompson B/ 30- Agbaji O/ 33- McCormack D/	1	12:50	1	11:40	01:10	0-2	-2	1	0	2	0	0.0000
0- Garrett M/ 2- Braun C/ 3- Harris D/ 10- Wilson J/ 30- Agbaji O/	1	11:40	1	10:56	00:44	0-4	-4	0	1	1	0	0.0000
0- Garrett M/ 2- Braun C/ 3- Harris D/ 24- Thompson B/ 30- Agbaji O/	1	10:56	1	09:26	01:30	4-0	4	2	1	0	2	1.0000
0- Garrett M/ 2- Braun C/ 3- Harris D/ 24- Thompson B/ 33- McCormack D/	1	09:26	1	09:09	00:17	0-0	0	0	0	0	0	0.0000
1- Grant-Foster T/ 2- Braun C/ 3- Harris D/ 24- Thompson B/ 33- McCormack D/	1	09:09	1	07:45	01:24	0-4	-4	1	0	0	0	0.0000
1- Grant-Foster T/ 2- Braun C/ 3- Harris D/ 30- Agbaji O/ 33- McCormack D/	1	07:45	1	07:33	00:12	0-0	0	2	0	0	0	0.0000
0- Garrett M/ 2- Braun C/ 3- Harris D/ 30- Agbaji O/ 33- McCormack D/	1	07:33	1	05:55	01:38	6-5	1	0	0	0	0	2.0833
0- Garrett M/ 2- Braun C/ 3- Harris D/ 10- Wilson J/ 30- Agbaji O/	1	05:55	1	00:41	05:13	13-8	5	5	1	0	1	1.4840
0- Garrett M/ 3- Harris D/ 10- Wilson J/ 13- Enaruna T/ 30- Agbaji O/	1	00:41	2	20:00	00:42	1-1	0	2	0	0	0	2.2727
0- Garrett M/ 2- Braun C/ 10- Wilson J/ 30- Agbaji O/ 33- McCormack D/	2	20:00	2	14:33	05:27	6-3	3	10	0	1	0	0.7614
2- Braun C/ 3- Harris D/ 10- Wilson J/ 30- Agbaji O/ 33- McCormack D/	2	14:33	2	12:56	01:37	2-0	2	3	0	0	0	1.1364
0- Garrett M/ 2- Braun C/ 3- Harris D/ 10- Wilson J/ 30- Agbaji O/	2	12:56	2	09:31	03:25	7-4	3	1	2	1	1	1.3462
0- Garrett M/ 2- Braun C/ 3- Harris D/ 30- Agbaji O/ 33- McCormack D/	2	09:31	2	09:07	00:24	0-0	0	2	0	0	0	0.0000
0- Garrett M/ 2- Braun C/ 3- Harris D/ 24- Thompson B/ 33- McCormack D/	2	09:07	2	07:48	01:19	0-2	-2	1	0	0	0	0.0000
0- Garrett M/ 2- Braun C/ 24- Thompson B/ 30- Agbaji O/ 33- McCormack D/	2	07:48	2	06:39	01:09	1-5	-4	2	0	0	0	0.5319
0- Garrett M/ 2- Braun C/ 3- Harris D/ 10- Wilson J/ 30- Agbaji O/	2	06:39	2	00:00	06:39	20-13	7	6	2	1	5	1.3774



Kansas at Kentucky

12/01/20 Bankers Life Fieldhouse, Indianapolis
State Farm Champions Classic

Officials: Patrick Adams, Doug Sirmons, Jamie Luckie

Kentucky

Lineup	Quarter On	Time On	Quarter Off	Time Off	Time on Court	Score	Score Diff	Reb	Stl	Tov	Ass	PPP
2- Askew D/3- Boston Jr. B/5- Clarke T/23- Jackson I/30- Sarr O/	1	20:00	1	16:15	03:45	4-5	-1	6	1	2	1	0.5000
2- Askew D/5- Clarke T/10- Mintz D/23- Jackson I/30- Sarr O/	1	16:15	1	15:05	01:10	3-0	3	2	1	1	0	1.2295
2- Askew D/5- Clarke T/10- Mintz D/21- Fletcher C/30- Sarr O/	1	15:05	1	13:49	01:16	2-0	2	1	1	0	0	1.0000
2- Askew D/3- Boston Jr. B/10- Mintz D/21- Fletcher C/30- Sarr O/	1	13:49	1	13:09	00:40	0-0	0	1	0	0	0	0.0000
2- Askew D/3- Boston Jr. B/10- Mintz D/21- Fletcher C/55- Ware L/	1	13:09	1	11:40	01:29	4-0	4	2	3	0	1	2.1277
3- Boston Jr. B/5- Clarke T/10- Mintz D/23- Jackson I/55- Ware L/	1	11:40	1	09:26	02:14	4-4	0	3	1	2	0	0.6803
2- Askew D/3- Boston Jr. B/5- Clarke T/23- Jackson I/30- Sarr O/	1	09:26	1	07:45	01:41	4-0	4	2	0	1	1	1.3333
2- Askew D/5- Clarke T/11- Allen D/21- Fletcher C/23- Jackson I/	1	07:45	1	07:33	00:12	0-0	0	0	0	0	0	0.0000
2- Askew D/5- Clarke T/11- Allen D/21- Fletcher C/55- Ware L/	1	07:33	1	05:55	01:38	5-5	0	0	0	0	1	2.5000
5- Clarke T/10- Mintz D/11- Allen D/21- Fletcher C/55- Ware L/	1	05:55	1	05:55	00:00	0-1	-1	0	0	0	0	0.0000
5- Clarke T/10- Mintz D/11- Allen D/21- Fletcher C/23- Jackson I/	1	05:55	1	03:43	02:12	6-7	-1	1	0	0	1	2.0000
3- Boston Jr. B/5- Clarke T/10- Mintz D/21- Fletcher C/23- Jackson I/	1	03:43	1	03:25	00:18	0-0	0	0	0	1	0	0.0000
2- Askew D/3- Boston Jr. B/5- Clarke T/21- Fletcher C/23- Jackson I/	1	03:25	1	03:08	00:17	0-0	0	0	0	0	0	0.0000
0- Toppin J/2- Askew D/3- Boston Jr. B/5- Clarke T/23- Jackson I/	1	03:08	1	01:10	01:58	2-4	-2	2	0	1	0	0.4098
0- Toppin J/3- Boston Jr. B/5- Clarke T/10- Mintz D/23- Jackson I/	1	01:10	1	00:41	00:28	0-2	-2	1	0	0	0	0.0000
3- Boston Jr. B/5- Clarke T/10- Mintz D/21- Fletcher C/55- Ware L/	1	00:41	2	20:00	00:42	1-1	0	0	0	0	0	1.1364
2- Askew D/3- Boston Jr. B/5- Clarke T/23- Jackson I/30- Sarr O/	2	20:00	2	18:21	01:39	3-0	3	1	0	0	0	0.7732
2- Askew D/3- Boston Jr. B/5- Clarke T/23- Jackson I/55- Ware L/	2	18:21	2	17:44	00:37	0-2	-2	0	0	0	0	0.0000
2- Askew D/3- Boston Jr. B/5- Clarke T/21- Fletcher C/23- Jackson I/	2	17:44	2	14:33	03:11	0-4	-4	4	0	2	0	0.0000
0- Toppin J/2- Askew D/5- Clarke T/10- Mintz D/23- Jackson I/	2	14:33	2	14:33	00:00	0-0	0	0	0	0	0	0.0000
0- Toppin J/2- Askew D/5- Clarke T/10- Mintz D/55- Ware L/	2	14:33	2	14:24	00:09	0-0	0	0	0	0	0	0.0000
0- Toppin J/2- Askew D/10- Mintz D/11- Allen D/55- Ware L/	2	14:24	2	13:43	00:41	0-1	-1	0	0	0	0	0.0000
0- Toppin J/3- Boston Jr. B/10- Mintz D/11- Allen D/55- Ware L/	2	13:43	2	13:37	00:06	0-1	-1	0	0	0	0	0.0000
3- Boston Jr. B/10- Mintz D/11- Allen D/23- Jackson I/30- Sarr O/	2	13:37	2	12:46	00:51	0-1	-1	1	0	0	0	0.0000
3- Boston Jr. B/5- Clarke T/10- Mintz D/21- Fletcher C/23- Jackson I/	2	12:46	2	11:37	01:09	2-3	-1	1	0	0	0	2.0000
0- Toppin J/2- Askew D/3- Boston Jr. B/5- Clarke T/23- Jackson I/	2	11:37	2	10:00	01:37	0-2	-2	2	0	3	0	0.0000
0- Toppin J/3- Boston Jr. B/5- Clarke T/10- Mintz D/23- Jackson I/	2	10:00	2	09:31	00:29	2-1	1	1	0	0	0	2.0000
0- Toppin J/3- Boston Jr. B/5- Clarke T/10- Mintz D/55- Ware L/	2	09:31	2	07:48	01:43	2-0	2	4	0	0	1	0.8197
0- Toppin J/5- Clarke T/10- Mintz D/11- Allen D/55- Ware L/	2	07:48	2	07:14	00:34	0-1	-1	0	0	0	0	0.0000
0- Toppin J/5- Clarke T/10- Mintz D/11- Allen D/23- Jackson I/	2	07:14	2	06:00	01:14	5-0	5	4	0	1	1	1.7361
0- Toppin J/3- Boston Jr. B/10- Mintz D/11- Allen D/23- Jackson I/	2	06:00	2	05:09	00:51	1-3	-2	0	0	1	0	0.6944
0- Toppin J/3- Boston Jr. B/5- Clarke T/10- Mintz D/23- Jackson I/	2	05:09	2	04:19	00:50	2-3	-1	1	0	0	0	1.0638
0- Toppin J/3- Boston Jr. B/5- Clarke T/10- Mintz D/30- Sarr O/	2	04:19	2	03:25	00:54	1-4	-3	3	0	0	0	0.4098
3- Boston Jr. B/5- Clarke T/10- Mintz D/23- Jackson I/30- Sarr O/	2	03:25	2	02:26	00:59	2-5	-3	0	0	1	1	1.0000
2- Askew D/3- Boston Jr. B/5- Clarke T/23- Jackson I/30- Sarr O/	2	02:26	2	02:05	00:21	1-0	1	0	0	0	0	2.2727
2- Askew D/3- Boston Jr. B/5- Clarke T/10- Mintz D/23- Jackson I/	2	02:05	2	00:41	01:23	3-2	1	0	0	0	0	2.0833
2- Askew D/3- Boston Jr. B/5- Clarke T/23- Jackson I/30- Sarr O/	2	00:41	2	00:25	00:16	0-0	0	0	0	0	0	0.0000
2- Askew D/3- Boston Jr. B/10- Mintz D/23- Jackson I/30- Sarr O/	2	00:25	2	00:12	00:14	3-1	2	0	0	0	0	3.0000
2- Askew D/3- Boston Jr. B/10- Mintz D/21- Fletcher C/23- Jackson I/	2	00:12	2	00:10	00:02	0-1	-1	0	0	0	0	0.0000
2- Askew D/3- Boston Jr. B/10- Mintz D/23- Jackson I/30- Sarr O/	2	00:10	2	00:10	00:00	0-1	-1	0	0	0	0	0.0000
3- Boston Jr. B/10- Mintz D/11- Allen D/23- Jackson I/30- Sarr O/	2	00:10	2	00:00	00:10	0-0	0	0	0	0	0	0.0000



Kansas at Kentucky

12/01/20 Bankers Life Fieldhouse, Indianapolis
State Farm Champions Classic

Game Time: 9:30 PM
Game Duration: 2:14

Officials: Patrick Adams, Doug Sirmons, Jamie Luckie

Kansas

Lineup	Time	Score	Score Diff	Pts/Min	Reb	Stl	Tov	Ass	PPP
0- Garrett M/ 2- Braun C/ 3- Harris D/ 10- Wilson J/ 30- Agbaji O/	16:01	40-29	11	2.4974	12	6	3	7	1.3123
0- Garrett M/ 2- Braun C/ 10- Wilson J/ 30- Agbaji O/ 33- McCormack D/	09:12	11-7	4	1.1957	16	1	3	0	0.6517
0- Garrett M/ 2- Braun C/ 3- Harris D/ 30- Agbaji O/ 33- McCormack D/	02:02	6-5	1	2.9508	2	0	0	0	2.0833
2- Braun C/ 3- Harris D/ 10- Wilson J/ 30- Agbaji O/ 33- McCormack D/	01:37	2-0	2	1.2371	3	0	0	0	1.1364
0- Garrett M/ 2- Braun C/ 3- Harris D/ 24- Thompson B/ 33- McCormack D/	01:36	0-2	-2	0.0000	1	0	0	0	0.0000
0- Garrett M/ 2- Braun C/ 3- Harris D/ 24- Thompson B/ 30- Agbaji O/	01:30	4-0	4	2.6667	2	1	0	2	1.0000
1- Grant-Foster T/ 2- Braun C/ 3- Harris D/ 24- Thompson B/ 33- McCormack D/	01:24	0-4	-4	0.0000	1	0	0	0	0.0000
2- Braun C/ 10- Wilson J/ 24- Thompson B/ 30- Agbaji O/ 44- Lightfoot M/	01:16	0-2	-2	0.0000	1	0	1	0	0.0000
0- Garrett M/ 2- Braun C/ 10- Wilson J/ 30- Agbaji O/ 44- Lightfoot M/	01:10	0-3	-3	0.0000	1	0	1	0	0.0000
0- Garrett M/ 10- Wilson J/ 24- Thompson B/ 30- Agbaji O/ 33- McCormack D/	01:10	0-2	-2	0.0000	1	0	2	0	0.0000
0- Garrett M/ 2- Braun C/ 24- Thompson B/ 30- Agbaji O/ 33- McCormack D/	01:09	1-5	-4	0.8696	2	0	0	0	0.5319
0- Garrett M/ 3- Harris D/ 10- Wilson J/ 13- Enaruna T/ 30- Agbaji O/	00:42	1-1	0	1.4286	2	0	0	0	2.2727
2- Braun C/ 13- Enaruna T/ 24- Thompson B/ 30- Agbaji O/ 33- McCormack D/	00:40	0-0	0	0.0000	1	0	0	0	0.0000
0- Garrett M/ 13- Enaruna T/ 24- Thompson B/ 30- Agbaji O/ 33- McCormack D/	00:19	0-2	-2	0.0000	0	0	1	0	0.0000
1- Grant-Foster T/ 2- Braun C/ 3- Harris D/ 30- Agbaji O/ 33- McCormack D/	00:12	0-0	0	0.0000	2	0	0	0	0.0000



Kansas at Kentucky

12/01/20 Bankers Life Fieldhouse, Indianapolis
State Farm Champions Classic

Officials: Patrick Adams, Doug Sirmons, Jamie Luckie

Kentucky

Lineup	Time	Score	Score Diff	Pts/Min	Reb	Stl	Tov	Ass	PPP
2- Askew D/3- Boston Jr. B/5- Clarke T/23- Jackson I/30- Sarr O/	07:42	12-5	7	1.5584	9	1	3	2	0.7353
0- Toppin J/2- Askew D/3- Boston Jr. B/5- Clarke T/23- Jackson I/	03:35	2-6	-4	0.5581	4	0	4	0	0.2538
2- Askew D/3- Boston Jr. B/5- Clarke T/21- Fletcher C/23- Jackson I/	03:28	0-4	-4	0.0000	4	0	2	0	0.0000
3- Boston Jr. B/5- Clarke T/10- Mintz D/23- Jackson I/55- Ware L/	02:14	4-4	0	1.7910	3	1	2	0	0.6803
5- Clarke T/10- Mintz D/11- Allen D/21- Fletcher C/23- Jackson I/	02:12	6-7	-1	2.7273	1	0	0	1	2.0000
0- Toppin J/3- Boston Jr. B/5- Clarke T/10- Mintz D/23- Jackson I/	01:47	4-6	-2	2.2430	3	0	0	0	1.0309
0- Toppin J/3- Boston Jr. B/5- Clarke T/10- Mintz D/55- Ware L/	01:43	2-0	2	1.1650	4	0	0	1	0.8197
2- Askew D/5- Clarke T/11- Allen D/21- Fletcher C/55- Ware L/	01:38	5-5	0	3.0612	0	0	0	1	2.5000
2- Askew D/3- Boston Jr. B/10- Mintz D/21- Fletcher C/55- Ware L/	01:29	4-0	4	2.6966	2	3	0	1	2.1277
3- Boston Jr. B/5- Clarke T/10- Mintz D/21- Fletcher C/23- Jackson I/	01:27	2-3	-1	1.3793	1	0	1	0	1.0000
2- Askew D/3- Boston Jr. B/5- Clarke T/10- Mintz D/23- Jackson I/	01:23	3-2	1	2.1687	0	0	0	0	2.0833
2- Askew D/5- Clarke T/10- Mintz D/21- Fletcher C/30- Sarr O/	01:16	2-0	2	1.5789	1	1	0	0	1.0000
0- Toppin J/5- Clarke T/10- Mintz D/11- Allen D/23- Jackson I/	01:14	5-0	5	4.0541	4	0	1	1	1.7361
2- Askew D/5- Clarke T/10- Mintz D/23- Jackson I/30- Sarr O/	01:10	3-0	3	2.5714	2	1	1	0	1.2295
3- Boston Jr. B/10- Mintz D/11- Allen D/23- Jackson I/30- Sarr O/	01:01	0-1	-1	0.0000	1	0	0	0	0.0000
3- Boston Jr. B/5- Clarke T/10- Mintz D/23- Jackson I/30- Sarr O/	00:59	2-5	-3	2.0339	0	0	1	1	1.0000
0- Toppin J/3- Boston Jr. B/5- Clarke T/10- Mintz D/30- Sarr O/	00:54	1-4	-3	1.1111	3	0	0	0	0.4098
0- Toppin J/3- Boston Jr. B/10- Mintz D/11- Allen D/23- Jackson I/	00:51	1-3	-2	1.1765	0	0	1	0	0.6944
3- Boston Jr. B/5- Clarke T/10- Mintz D/21- Fletcher C/55- Ware L/	00:42	1-1	0	1.4286	0	0	0	0	1.1364
0- Toppin J/2- Askew D/10- Mintz D/11- Allen D/55- Ware L/	00:41	0-1	-1	0.0000	0	0	0	0	0.0000
2- Askew D/3- Boston Jr. B/10- Mintz D/21- Fletcher C/30- Sarr O/	00:40	0-0	0	0.0000	1	0	0	0	0.0000
2- Askew D/3- Boston Jr. B/5- Clarke T/23- Jackson I/55- Ware L/	00:37	0-2	-2	0.0000	0	0	0	0	0.0000
0- Toppin J/5- Clarke T/10- Mintz D/11- Allen D/55- Ware L/	00:34	0-1	-1	0.0000	0	0	0	0	0.0000
2- Askew D/3- Boston Jr. B/10- Mintz D/23- Jackson I/30- Sarr O/	00:14	3-2	1	12.8571	0	0	0	0	3.0000
2- Askew D/5- Clarke T/11- Allen D/21- Fletcher C/23- Jackson I/	00:12	0-0	0	0.0000	0	0	0	0	0.0000
0- Toppin J/2- Askew D/5- Clarke T/10- Mintz D/55- Ware L/	00:09	0-0	0	0.0000	0	0	0	0	0.0000
0- Toppin J/3- Boston Jr. B/10- Mintz D/11- Allen D/55- Ware L/	00:06	0-1	-1	0.0000	0	0	0	0	0.0000
2- Askew D/3- Boston Jr. B/10- Mintz D/21- Fletcher C/23- Jackson I/	00:02	0-1	-1	0.0000	0	0	0	0	0.0000
5- Clarke T/10- Mintz D/11- Allen D/21- Fletcher C/55- Ware L/	00:00	0-1	-1	NaN	0	0	0	0	0.0000
0- Toppin J/2- Askew D/5- Clarke T/10- Mintz D/23- Jackson I/	00:00	0-0	0	NaN	0	0	0	0	0.0000