



Officials: Tiara Cruse, Greg Small, Nick Marshall

North Dakota St. - 72

Record: 5-1

NO.	Name	F	Min	FG	3P	FT	Rebounds			Fouls		TP	AS	TO	ST	Blocks		+/-
				M-A	M-A	M-A	OR	DR	TOT	PF	FD					BS	BA	
12	Marie Olson	F	25:56	3-4	3-3	2-4	1	7	8	4	3	11	1	4	0	2	0	1
34	Emily Dietz	F	31:13	5-8	0-0	1-2	2	4	6	3	3	11	1	2	3	2	0	7
5	Ryan Cobbins	G	20:07	1-4	0-1	7-10	1	4	5	2	5	9	0	0	0	0	0	-9
11	Heaven Hamling	G	30:15	7-14	0-3	0-0	0	1	1	0	1	14	5	2	2	0	1	6
22	Michelle Gaislerova	G	15:42	0-6	0-3	0-0	0	2	2	1	3	0	0	0	0	0	1	-3
23	Olivia Skibiel		13:46	3-6	3-4	0-0	0	2	2	2	0	9	1	0	0	0	0	3
24	Abby Schulte		21:11	1-7	1-4	3-4	0	1	1	2	2	6	2	1	0	1	0	11
25	Britney Epperson		08:47	0-2	0-0	0-2	2	1	3	2	3	0	1	0	0	0	0	-4
0	Reneya Hopkins		12:13	1-4	0-1	2-2	0	1	1	3	2	4	2	1	0	0	1	-5
3	Kadie Deaton		20:50	3-7	0-1	2-2	1	5	6	2	2	8	0	0	0	0	1	8
Team							0	3	3			0		1				
<b>Totals</b>				24-62	7-20	17-26	7	31	38	21	24	72	13	11	5	5	4	3

Technical Fouls::NONE

Shooting By Period		
1 <sup>st</sup> FG%	2-15	13.3%
3PT%	0-5	0.0%
FT%	1-2	50%
2 <sup>nd</sup> FG%	8-21	38.1%
3PT%	4-7	57.1%
FT%	4-8	50%
3 <sup>rd</sup> FG%	9-14	64.3%
3PT%	2-4	50.0%
FT%	3-4	75%
4 <sup>th</sup> FG%	5-12	41.7%
3PT%	1-4	25.0%
FT%	9-12	75%
GM FG%	24-62	38.7%
3PT%	7-20	35.0%
FT%	17-26	65.4%

Dead Ball Rebounds: 8, 2

Kansas - 69

Record: 4-2

NO.	Name	F	Min	FG	3P	FT	Rebounds			Fouls		TP	AS	TO	ST	Blocks		+/-
				M-A	M-A	M-A	OR	DR	TOT	PF	FD					BS	BA	
1	Tina Stephens	F	29:00	6-14	1-2	3-6	1	3	4	4	4	16	2	0	2	0	1	0
11	Ioanna Chatzileonti	F	28:54	3-9	0-2	0-0	3	9	12	4	1	6	1	1	0	3	0	4
5	Aniya Thomas	G	22:00	3-6	0-2	0-2	0	1	1	4	1	6	2	2	0	0	0	4
15	Zakiyah Franklin	G	31:31	1-7	0-2	3-3	1	4	5	1	4	5	3	1	0	0	1	-4
20	Julie Brosseau	G	31:46	2-8	0-6	9-9	0	4	4	1	5	13	1	2	1	0	1	-5
21	Brooklyn Mitchell		21:29	4-9	1-1	6-8	0	1	1	3	6	15	1	3	3	0	1	0
35	Bailey Helgren		17:19	1-1	0-0	0-0	0	5	5	1	0	2	0	1	0	1	0	-3
25	Chandler Prater		13:15	2-6	0-2	0-0	0	3	3	4	0	4	1	0	0	0	1	-4
12	Katrine Jessen		01:50	0-0	0-0	0-0	0	1	1	2	0	0	0	1	0	0	0	-3
10	Emma Merriweather		02:56	1-1	0-0	0-0	0	0	0	0	0	2	0	0	0	0	0	-4
Team							4	1	5			0		0				
<b>Totals</b>				23-61	2-17	21-28	9	32	41	24	21	69	11	11	6	4	5	-3

Technical Fouls::NONE

Shooting By Period		
1 <sup>st</sup> FG%	8-16	50.0%
3PT%	0-3	0.0%
FT%	2-3	66.7%
2 <sup>nd</sup> FG%	5-13	38.5%
3PT%	1-4	25.0%
FT%	1-2	50%
3 <sup>rd</sup> FG%	6-12	50.0%
3PT%	0-4	0.0%
FT%	12-14	85.7%
4 <sup>th</sup> FG%	4-20	20.0%
3PT%	1-6	16.7%
FT%	6-9	66.7%
GM FG%	23-61	37.7%
3PT%	2-17	11.8%
FT%	21-28	75.0%

Dead Ball Rebounds: 3, 0

	NDSU	Kansas
Biggest lead	6 (3 <sup>rd</sup> 4:36)	13 (1 <sup>st</sup> 1:29)
Best Scoring Run	7 (2 <sup>nd</sup> 7:33)	13 (1 <sup>st</sup> 4:31)
Lead Changes	8	
Times Tied	6	
Time with Lead	13:08	23:21

Points from	NDSU	Kansas
Turnovers	7	11
Paint	24	32
Second Chance	10	5
Fast Breaks	7	15
Bench	27	23

	Period by Period Scoring				
	1st	2nd	3rd	4th	TOT
NDSU	5	24	23	20	72
Kansas	18	12	24	15	69



**North Dakota St. at Kansas**

12/21/20 Allen Fieldhouse, Lawrence  
2020-21 Women's Basketball

**Game Time:** 1:00 PM  
**Game Duration:** 1:57  
**Attendance:** 456

**Officials:** Tiara Cruse, Greg Small, Nick Marshall

**Period 1**

**Quarter Starters:**

<b>Kansas</b>	1 Stephens T	5 Thomas A	11 Chatzileonti I	15 Franklin Z	20 Brosseau J
<b>NDSU</b>	5 Cobbins R	11 Hamling H	12 Olson M	22 Gaislerova M	34 Dietz E

Game Time	Kansas	Score	Diff	NDSU
10:00	11 CHATZILEONTI I jumpball lost			34 DIETZ E jumpball won
09:29		<b>0-2</b>	<b>-2</b>	11 HAMLING H 2pt FG in the paint, floating jump shot made (2)
09:14	1 STEPHENS T 2pt FG in the paint, layup made (2)	<b>2-2</b>	<b>0</b>	
09:14	15 FRANKLIN Z assist (1)			
09:00				12 OLSON M turnover travel (1)
08:42	20 BROSSEAU J turnover travel (1)			
08:26				11 HAMLING H 3pt FG from turnover, jump shot missed
08:22	20 BROSSEAU J defensive rebound (1)			
08:22	20 BROSSEAU J foul drawn (1)			5 COBBINS R foul loose ball (1 - 1)
08:03	1 STEPHENS T 2pt FG in the paint, layup made (4)	<b>4-2</b>	<b>2</b>	
07:50				34 DIETZ E 2pt FG outside the paint, jump shot missed
07:46	15 FRANKLIN Z defensive rebound (1)			
07:42	20 BROSSEAU J 3pt FG , jump shot missed			
07:37				12 OLSON M defensive rebound (1)
07:27				22 GAISLEROVA M 2pt FG in the paint, driving layup blocked
07:27	11 CHATZILEONTI I block (1)			
07:21	11 CHATZILEONTI I defensive rebound (1)			
07:20	1 STEPHENS T 2pt FG in the paint, layup blocked			
07:20				12 OLSON M block (1)
07:20				defensive rebound (2)
07:20				23 SKIBIEL O substitution in
07:20				12 OLSON M substitution out
07:10				22 GAISLEROVA M 3pt FG , jump shot missed
06:59	11 CHATZILEONTI I defensive rebound (2)			
06:54	5 THOMAS A 2pt FG in the paint, driving layup made (2)	<b>6-2</b>	<b>4</b>	
06:33				34 DIETZ E 2pt FG in the paint, hook shot missed
06:28	1 STEPHENS T defensive rebound (1)			
06:17	15 FRANKLIN Z 2pt FG in the paint, driving layup made (2)	<b>8-2</b>	<b>6</b>	
06:17	15 FRANKLIN Z foul drawn (1)			5 COBBINS R foul shooting (2 - 2)
06:17				5 COBBINS R substitution out
06:17				24 SCHULTE A substitution in
06:17	15 FRANKLIN Z free throw 1 - 1 made (3)	<b>9-2</b>	<b>7</b>	
05:57				23 SKIBIEL O 2pt FG outside the paint, jump shot missed
05:52	11 CHATZILEONTI I defensive rebound (3)			
05:51	20 BROSSEAU J turnover travel (2)			
05:42				11 HAMLING H 3pt FG from turnover, jump shot missed
05:38	20 BROSSEAU J defensive rebound (2)			
05:23	5 THOMAS A 2pt FG in the paint, driving layup missed			
05:19				23 SKIBIEL O defensive rebound (1)
05:15				24 SCHULTE A 3pt FG , jump shot missed
05:11	15 FRANKLIN Z defensive rebound (2)			
05:08	5 THOMAS A 2pt FG fast break in the paint, layup made (4)	<b>11-2</b>	<b>9</b>	
05:08	15 FRANKLIN Z assist (2)			



**North Dakota St. at Kansas**

12/21/20 Allen Fieldhouse, Lawrence  
2020-21 Women's Basketball

**Game Time:** 1:00 PM  
**Game Duration:** 1:57  
**Attendance:** 456

**Officials:** Tiara Cruse, Greg Small, Nick Marshall

Game Time	Kansas	Score	Diff	NDSU
05:06				Timeout 30 Sec
05:06	11 CHATZILEONTI I substitution out			
05:06	20 BROSSEAU J substitution out			
05:06	21 MITCHELL B substitution in			
05:06	35 HELGREN B substitution in			
05:06				34 DIETZ E substitution out
05:06				25 EPPERSON B substitution in
04:44				22 GAISLEROVA M 3pt FG , jump shot missed
04:40	15 FRANKLIN Z defensive rebound (3)			
04:31	1 STEPHENS T 2pt FG in the paint, driving layup made (6)	<b>13-2</b>	<b>11</b>	
04:20				11 HAMLING H substitution out
04:20				22 GAISLEROVA M substitution out
04:20				23 SKIBIEL O substitution out
04:20				0 HOPKINS R substitution in
04:20				3 DEATON K substitution in
04:20				12 OLSON M substitution in
04:11				25 EPPERSON B 2pt FG outside the paint, turnaround jump shot missed
04:07	35 HELGREN B defensive rebound (1)			
04:02	21 MITCHELL B 2pt FG in the paint, driving layup missed			
03:58				12 OLSON M defensive rebound (2)
03:56	5 THOMAS A foul shooting (1 - 1)			24 SCHULTE A foul drawn (1)
03:56	1 STEPHENS T substitution out			
03:56	5 THOMAS A substitution out			
03:56	11 CHATZILEONTI I substitution in			
03:56	25 PRATER C substitution in			
03:56		<b>13-3</b>	<b>10</b>	24 SCHULTE A free throw fast break 1 - 2 made (1)
03:56				24 SCHULTE A free throw fast break 2 - 2 missed
03:54	11 CHATZILEONTI I defensive rebound (4)			
03:44	21 MITCHELL B foul drawn (1)			0 HOPKINS R foul personal (1 - 3)
03:34	11 CHATZILEONTI I 3pt FG , jump shot missed			
03:29				3 DEATON K defensive rebound (1)
03:23				24 SCHULTE A 2pt FG in the paint, driving layup missed
03:18	25 PRATER C defensive rebound (1)			
03:12	21 MITCHELL B foul drawn (2)			24 SCHULTE A foul shooting (1 - 4)
03:12				12 OLSON M substitution out
03:12				25 EPPERSON B substitution out
03:12				5 COBBINS R substitution in
03:12				34 DIETZ E substitution in
03:12	21 MITCHELL B free throw 1 - 2 made (1)	<b>14-3</b>	<b>11</b>	
03:12	21 MITCHELL B free throw 2 - 2 missed			
03:11	11 CHATZILEONTI I offensive rebound (5)			
03:03	21 MITCHELL B turnover bad pass (1)			34 DIETZ E steal (1)
02:54				5 COBBINS R substitution out
02:54				12 OLSON M substitution in
02:49				3 DEATON K 2pt FG from turnover in the paint, driving layup blocked
02:49	35 HELGREN B block (1)			
02:40	25 PRATER C defensive rebound (2)			
02:34	25 PRATER C 2pt FG in the paint, driving layup blocked			



**North Dakota St. at Kansas**

12/21/20 Allen Fieldhouse, Lawrence  
2020-21 Women's Basketball

**Game Time:** 1:00 PM

**Game Duration:** 1:57

**Attendance:** 456

**Officials:** Tiara Cruse, Greg Small, Nick Marshall

Game Time	Kansas	Score	Diff	NDSU
02:34				34 DIETZ E block (1)
02:30				34 DIETZ E defensive rebound (1)
02:30	25 PRATER C foul personal (1 - 2)			3 DEATON K foul drawn (1)
02:30	15 FRANKLIN Z substitution out			
02:30	25 PRATER C substitution out			
02:30	35 HELGREN B substitution out			
02:30	1 STEPHENS T substitution in			
02:30	5 THOMAS A substitution in			
02:30	20 BROSSEAU J substitution in			
02:30				3 DEATON K substitution out
02:30				22 GAISLEROVA M substitution in
02:23	1 STEPHENS T steal (1)			24 SCHULTE A turnover bad pass (1)
01:56	1 STEPHENS T 2pt FG from turnover in the paint, jump shot missed			
01:52				22 GAISLEROVA M defensive rebound (1)
01:42				0 HOPKINS R 2pt FG in the paint, jump shot blocked
01:42	11 CHATZILEONTI I block (2)			
01:36				12 OLSON M offensive rebound (3)
01:34	21 MITCHELL B steal (1)			12 OLSON M turnover bad pass (2)
01:29	21 MITCHELL B 2pt FG fast break from turnover in the paint, driving layup made (3)	<b>16-3</b>	<b>13</b>	
01:00		<b>16-5</b>	<b>11</b>	0 HOPKINS R 2pt FG in the paint, layup made (2)
01:00				12 OLSON M assist (1)
00:41	20 BROSSEAU J 2pt FG outside the paint, jump shot made (2)	<b>18-5</b>	<b>13</b>	
00:39				22 GAISLEROVA M substitution out
00:39				11 HAMLING H substitution in
00:19	21 MITCHELL B steal (2)			34 DIETZ E turnover lost ball (1)
00:03	5 THOMAS A 3pt FG from turnover, jump shot missed			
00:01				defensive rebound (9)
00:01				0 HOPKINS R substitution out
00:01				22 GAISLEROVA M substitution in
<b>END OF PERIOD</b>				
<b>Kansas 18-5 NDSU</b>				



**North Dakota St. at Kansas**

12/21/20 Allen Fieldhouse, Lawrence  
2020-21 Women's Basketball

Game Time: 1:00 PM  
Game Duration: 1:57  
Attendance: 456

Officials: Tiara Cruse, Greg Small, Nick Marshall

**North Dakota St. - 5**

NO.	Name	F	Min	FG			Rebounds			Fouls		TP	AS	TO	ST	Blocks		+/-
				M-A	3P	FT	OR	DR	TOT	PF	FD					BS	BA	
12	Marie Olson	F	06:42	0-0	0-0	0-0	1	2	3	0	0	0	1	2	0	1	0	-3
34	Emily Dietz	F	08:06	0-2	0-0	0-0	0	1	1	0	0	0	0	1	1	1	0	-12
5	Ryan Cobbins	G	04:01	0-0	0-0	0-0	0	0	0	2	0	0	0	0	0	0	0	-7
11	Heaven Hamling	G	06:19	1-3	0-2	0-0	0	0	0	0	0	2	0	0	0	0	0	-11
22	Michelle Gaislerova	G	07:32	0-3	0-2	0-0	0	1	1	0	0	0	0	0	0	0	1	-13
23	Olivia Skibiel		03:00	0-1	0-0	0-0	0	1	1	0	0	0	0	0	0	0	0	-9
24	Abby Schulte		06:17	0-2	0-1	1-2	0	0	0	1	1	1	0	1	0	0	0	-7
25	Britney Epperson		01:54	0-1	0-0	0-0	0	0	0	0	0	0	0	0	0	0	0	-1
0	Reneya Hopkins		04:19	1-2	0-0	0-0	0	0	0	1	0	2	0	0	0	0	1	-2
3	Kadie Deaton		01:50	0-1	0-0	0-0	0	1	1	0	1	0	0	0	0	0	1	0
Team							0	2	2			0		0				
<b>Totals</b>				2-15	0-5	1-2	1	8	9	4	2	5	1	4	1	2	3	-13

Shooting By Period		
1st FG%	2-15	13.3%
3PT%	0-5	0.0%
FT%	1-2	50%
GM FG%	2-15	13.3%
3PT%	0-5	0.0%
FT%	1-2	50.0%

Dead Ball Rebounds: 0, 0

Technical Fouls::NONE

**Kansas - 18**

NO.	Name	F	Min	FG			Rebounds			Fouls		TP	AS	TO	ST	Blocks		+/-
				M-A	3P	FT	OR	DR	TOT	PF	FD					BS	BA	
1	Tina Stephens	F	08:34	3-5	0-0	0-0	0	1	1	0	0	6	0	0	1	0	1	13
11	Ioanna Chatzileonti	F	08:50	0-1	0-1	0-0	1	4	5	0	0	0	0	0	0	2	0	11
5	Aniya Thomas	G	08:34	2-4	0-1	0-0	0	0	0	1	0	4	0	0	0	0	0	13
15	Zakiyah Franklin	G	07:30	1-1	0-0	1-1	0	3	3	0	1	3	2	0	0	0	0	11
20	Julie Brosseau	G	07:24	1-2	0-1	0-0	0	2	2	0	1	2	0	2	0	0	0	11
21	Brooklyn Mitchell		05:06	1-2	0-0	1-2	0	0	0	0	2	3	0	1	2	0	0	4
35	Bailey Helgren		02:36	0-0	0-0	0-0	0	1	1	0	0	0	0	0	0	1	0	2
25	Chandler Prater		01:26	0-1	0-0	0-0	0	2	2	1	0	0	0	0	0	0	1	0
Team							0	0	0			0		0				
<b>Totals</b>				8-16	0-3	2-3	1	13	14	2	4	18	2	3	3	3	2	13

Shooting By Period		
1st FG%	8-16	50.0%
3PT%	0-3	0.0%
FT%	2-3	66.7%
GM FG%	8-16	50.0%
3PT%	0-3	0.0%
FT%	2-3	66.7%

Dead Ball Rebounds: 0, 0

Technical Fouls::NONE

	NDSU	Kansas
Biggest lead	2 (1 <sup>st</sup> 9:29)	13 (1 <sup>st</sup> 1:29)
Best Scoring Run	2 (1 <sup>st</sup> 9:29)	13 (1 <sup>st</sup> 4:31)
Lead Changes	1	
Times Tied	1	
Time with Lead	00:15	08:03

Points from	NDSU	Kansas
Turnovers	0	2
Paint	4	14
Second Chance	0	0
Fast Breaks	1	4
Bench	3	3

	Period by Period Scoring				
	1st	2nd	3rd	4th	TOT
NDSU	5	24	23	20	72
Kansas	18	12	24	15	69



**North Dakota St. at Kansas**

12/21/20 Allen Fieldhouse, Lawrence  
2020-21 Women's Basketball

Game Time: 1:00 PM

Game Duration: 1:57

Attendance: 456

Officials: Tiara Cruse, Greg Small, Nick Marshall

**Period 2**

**Quarter Starters:**

<b>Kansas</b>	1 Stephens T	5 Thomas A	11 Chatzileonti I	15 Franklin Z	20 Brosseau J
<b>NDSU</b>	11 Hamling H	12 Olson M	22 Gaislerova M	24 Schulte A	34 Dietz E

Game Time	Kansas	Score	Diff	NDSU
10:00	21 MITCHELL B substitution out			
10:00	15 FRANKLIN Z substitution in			
09:45	11 CHATZILEONTI I 3pt FG , jump shot missed			
09:41				22 GAISLEROVA M defensive rebound (2)
09:28				12 OLSON M 2pt FG in the paint, driving layup missed
09:24				34 DIETZ E offensive rebound (2)
09:22		<b>18-7</b>	<b>11</b>	34 DIETZ E 2pt FG second chance in the paint, layup made (2)
09:08	11 CHATZILEONTI I 2pt FG outside the paint, jump shot missed			
09:06				defensive dead ball rebound (1)
09:06	1 STEPHENS T foul loose ball (1 - 1)			12 OLSON M foul drawn (1)
08:58		<b>18-9</b>	<b>9</b>	11 HAMLING H 2pt FG in the paint, layup made (4)
08:40	1 STEPHENS T 2pt FG in the paint, layup missed			
08:34				34 DIETZ E defensive rebound (3)
08:14				34 DIETZ E 2pt FG in the paint, layup missed
08:10	5 THOMAS A defensive rebound (1)			
08:09	5 THOMAS A turnover bad pass (1)			11 HAMLING H steal (1)
08:02				11 HAMLING H 2pt FG from turnover in the paint, layup missed
07:58	20 BROSSEAU J defensive rebound (3)			
07:50	1 STEPHENS T 3pt FG , jump shot missed			
07:45				24 SCHULTE A defensive rebound (1)
07:33	1 STEPHENS T substitution out			
07:33	5 THOMAS A substitution out			
07:33	11 CHATZILEONTI I substitution out			
07:33	12 JESSEN K substitution in			
07:33	21 MITCHELL B substitution in			
07:33	35 HELGREN B substitution in			
07:33	21 MITCHELL B foul personal (1 - 2)			34 DIETZ E foul drawn (1)
07:33		<b>18-12</b>	<b>6</b>	12 OLSON M 3pt FG , jump shot made (3)
07:33				11 HAMLING H assist (1)
07:22	35 HELGREN B turnover bad pass (1)			
07:16				34 DIETZ E substitution out
07:16				25 EPPERSON B substitution in
06:42				22 GAISLEROVA M 2pt FG from turnover outside the paint, jump shot missed
06:35				25 EPPERSON B offensive rebound (1)
06:35				25 EPPERSON B 2pt FG from turnover second chance in the paint, layup missed
06:35				25 EPPERSON B offensive rebound (2)
06:35	21 MITCHELL B foul personal (2 - 3)			25 EPPERSON B foul drawn (1)
06:35	21 MITCHELL B substitution out			
06:35	5 THOMAS A substitution in			
06:31				24 SCHULTE A 3pt FG from turnover second chance, jump shot missed
06:27	12 JESSEN K defensive rebound (1)			



**North Dakota St. at Kansas**

12/21/20 Allen Fieldhouse, Lawrence  
2020-21 Women's Basketball

**Game Time:** 1:00 PM  
**Game Duration:** 1:57  
**Attendance:** 456

**Officials:** Tiara Cruse, Greg Small, Nick Marshall

Game Time	Kansas	Score	Diff	NDSU
06:18	12 JESSEN K foul offensive (1 - 4)			22 GAISLEROVA M foul drawn (1)
06:18	12 JESSEN K turnover offensive (1)			
06:04				24 SCHULTE A 2pt FG from turnover in the paint, layup missed
06:01	15 FRANKLIN Z defensive rebound (4)			
05:54	15 FRANKLIN Z 2pt FG in the paint, driving layup missed			
05:51				12 OLSON M defensive rebound (4)
05:45				22 GAISLEROVA M 3pt FG , jump shot missed
05:43				offensive dead ball rebound (2)
05:43	12 JESSEN K foul loose ball (2 - 5)			25 EPPERSON B foul drawn (2)
05:43	12 JESSEN K substitution out			
05:43	1 STEPHENS T substitution in			
05:43				22 GAISLEROVA M substitution out
05:43				3 DEATON K substitution in
05:43				25 EPPERSON B free throw 1 - 2 missed
05:43				offensive dead ball rebound (3)
05:43				25 EPPERSON B free throw 2 - 2 missed
05:43	35 HELGREN B defensive rebound (2)			
05:43	15 FRANKLIN Z 2pt FG in the paint, driving layup missed			
05:41	1 STEPHENS T offensive rebound (2)			
05:40	15 FRANKLIN Z foul drawn (2)			25 EPPERSON B foul personal (1 - 1)
05:14	20 BROSSEAU J substitution out			
05:14	25 PRATER C substitution in			
05:14				12 OLSON M substitution out
05:14				25 EPPERSON B substitution out
05:14				23 SKIBIEL O substitution in
05:14				34 DIETZ E substitution in
05:13	5 THOMAS A 2pt FG second chance outside the paint, jump shot made (6)	<b>20-12</b>	<b>8</b>	
05:06		<b>20-15</b>	<b>5</b>	23 SKIBIEL O 3pt FG , jump shot made (3)
05:06				24 SCHULTE A assist (1)
04:28	15 FRANKLIN Z turnover lost ball (1)			34 DIETZ E steal (2)
04:22				11 HAMLING H 2pt FG from turnover in the paint, layup missed
04:19	35 HELGREN B defensive rebound (3)			
04:08	1 STEPHENS T 2pt FG outside the paint, jump shot made (8)	<b>22-15</b>	<b>7</b>	
04:08	5 THOMAS A assist (1)			
03:51		<b>22-18</b>	<b>4</b>	23 SKIBIEL O 3pt FG , jump shot made (6)
03:51				11 HAMLING H assist (2)
03:30	1 STEPHENS T 3pt FG , jump shot made (11)	<b>25-18</b>	<b>7</b>	
03:30	15 FRANKLIN Z assist (3)			
03:12				11 HAMLING H 2pt FG in the paint, layup missed
03:05				34 DIETZ E offensive rebound (4)
03:05		<b>25-20</b>	<b>5</b>	34 DIETZ E 2pt FG second chance in the paint, layup made (4)
02:56	1 STEPHENS T foul drawn (1)			23 SKIBIEL O foul shooting (1 - 2)
02:56	Timeout media			
02:56	35 HELGREN B substitution out			
02:56	10 MERRIWEATHER E substitution in			
02:56				11 HAMLING H substitution out
02:56				0 HOPKINS R substitution in
02:56	1 STEPHENS T free throw 1 - 2 missed			



## North Dakota St. at Kansas

12/21/20 Allen Fieldhouse, Lawrence  
2020-21 Women's Basketball

Game Time: 1:00 PM

Game Duration: 1:57

Attendance: 456

Officials: Tiara Cruse, Greg Small, Nick Marshall

Game Time	Kansas	Score	Diff	NDSU
02:56	offensive dead ball rebound (1)			
02:56	1 STEPHENS T free throw 2 - 2 made (12)	<b>26-20</b>	<b>6</b>	
02:56	1 STEPHENS T substitution out			
02:56	11 CHATZILEONTI I substitution in			
02:47	5 THOMAS A foul shooting (2 - 6)			0 HOPKINS R foul drawn (1)
02:47	5 THOMAS A substitution out			
02:47	20 BROSSEAU J substitution in			
02:47		<b>26-21</b>	<b>5</b>	0 HOPKINS R free throw 1 - 2 made (3)
02:47		<b>26-22</b>	<b>4</b>	0 HOPKINS R free throw 2 - 2 made (4)
02:30	25 PRATER C 3pt FG , jump shot missed			
02:27				defensive rebound (18)
02:09				3 DEATON K 2pt FG in the paint, driving layup missed
02:06				3 DEATON K offensive rebound (2)
02:04				23 SKIBIEL O 3pt FG second chance, jump shot missed
02:03				offensive dead ball rebound (4)
02:03	25 PRATER C foul loose ball (2 - 7)			24 SCHULTE A foul drawn (2)
02:03		<b>26-23</b>	<b>3</b>	24 SCHULTE A free throw 1 - 2 made (2)
02:03		<b>26-24</b>	<b>2</b>	24 SCHULTE A free throw 2 - 2 made (3)
01:54	15 FRANKLIN Z 2pt FG outside the paint, pull up jump shot missed			
01:47				0 HOPKINS R defensive rebound (1)
01:43				0 HOPKINS R 2pt FG outside the paint, jump shot missed
01:43	11 CHATZILEONTI I defensive rebound (6)			
01:43	11 CHATZILEONTI I foul drawn (1)			23 SKIBIEL O foul loose ball (2 - 3)
01:43				23 SKIBIEL O substitution out
01:43				12 OLSON M substitution in
01:29	10 MERRIWEATHER E 2pt FG in the paint, layup made (2)	<b>28-24</b>	<b>4</b>	
01:29	25 PRATER C assist (1)			
01:16		<b>28-26</b>	<b>2</b>	3 DEATON K 2pt FG outside the paint, jump shot made (2)
00:57	25 PRATER C 2pt FG outside the paint, pull up jump shot made (2)	<b>30-26</b>	<b>4</b>	
00:38	11 CHATZILEONTI I foul shooting (1 - 8)			12 OLSON M foul drawn (2)
00:38				12 OLSON M free throw 1 - 2 missed
00:38				offensive dead ball rebound (5)
00:38				12 OLSON M free throw 2 - 2 missed
00:37	11 CHATZILEONTI I defensive rebound (7)			
00:21	11 CHATZILEONTI I turnover bad pass (1)			34 DIETZ E steal (3)
00:03		<b>30-29</b>	<b>1</b>	12 OLSON M 3pt FG from turnover, jump shot made (6)
00:03				0 HOPKINS R assist (1)
<b>END OF PERIOD</b>				
<b>Kansas 30-29 NDSU</b>				





**North Dakota St. at Kansas**

12/21/20 Allen Fieldhouse, Lawrence  
2020-21 Women's Basketball

Game Time: 1:00 PM  
Game Duration: 1:57  
Attendance: 456

Officials: Tiara Cruse, Greg Small, Nick Marshall

**North Dakota St. - 24**

NO.	Name	F	Min	FG			Rebounds			Fouls		TP	AS	TO	ST	Blocks		+/-
				M-A	3P	FT	OR	DR	TOT	PF	FD					BS	BA	
12	Marie Olson	F	06:29	2-3	2-2	0-2	0	1	1	0	2	6	0	0	0	0	0	8
34	Emily Dietz	F	07:58	2-3	0-0	0-0	2	1	3	0	1	4	0	0	2	0	0	12
5	Ryan Cobbins	G	00:00															
11	Heaven Hamling	G	07:04	1-4	0-0	0-0	0	0	0	0	0	2	2	0	1	0	0	8
22	Michelle Gaislerova	G	04:17	0-2	0-1	0-0	0	1	1	0	1	0	0	0	0	0	0	7
24	Abby Schulte		10:00	0-2	0-1	2-2	0	1	1	0	1	2	1	0	0	0	0	12
25	Britney Epperson		02:02	0-1	0-0	0-2	2	0	2	1	2	0	0	0	0	0	0	0
3	Kadie Deaton		05:43	1-2	0-0	0-0	1	0	1	0	0	2	0	0	0	0	0	5
23	Olivia Skibieli		03:31	2-3	2-3	0-0	0	0	0	2	0	6	0	0	0	0	0	4
0	Reneya Hopkins		02:56	0-1	0-0	2-2	0	1	1	0	1	2	1	0	0	0	0	4
Team							0	1	1			0		0				
<b>Totals</b>				8-21	4-7	4-8	5	6	11	3	8	24	4	0	3	0	0	12

Shooting By Period		
2 <sup>nd</sup> FG%	8-21	38.1%
3PT%	4-7	57.1%
FT%	4-8	50%
GM FG%	8-21	38.1%
3PT%	4-7	57.1%
FT%	4-8	50.0%

Dead Ball Rebounds: 4, 1

Technical Fouls::NONE

**Kansas - 12**

NO.	Name	F	Min	FG			Rebounds			Fouls		TP	AS	TO	ST	Blocks		+/-
				M-A	3P	FT	OR	DR	TOT	PF	FD					BS	BA	
1	Tina Stephens	F	05:14	2-4	1-2	1-2	1	0	1	1	1	6	0	0	0	0	0	-4
11	Ioanna Chatzileonti	F	05:23	0-2	0-1	0-0	0	2	2	1	1	0	0	1	0	0	0	-9
5	Aniya Thomas	G	06:15	1-1	0-0	0-0	0	1	1	1	0	2	1	1	0	0	0	-4
15	Zakiyah Franklin	G	10:00	0-3	0-0	0-0	0	1	1	0	1	0	1	1	0	0	0	-12
20	Julie Brosseau	G	07:33	0-0	0-0	0-0	0	1	1	0	0	0	0	0	0	0	0	-12
12	Katrine Jessen		01:50	0-0	0-0	0-0	0	1	1	2	0	0	0	1	0	0	0	-3
21	Brooklyn Mitchell		00:58	0-0	0-0	0-0	0	0	0	2	0	0	0	0	0	0	0	-3
35	Bailey Helgren		04:37	0-0	0-0	0-0	0	2	2	0	0	0	0	1	0	0	0	-4
25	Chandler Prater		05:14	1-2	0-1	0-0	0	0	0	1	0	2	1	0	0	0	0	-5
10	Emma Merriweather		02:56	1-1	0-0	0-0	0	0	0	0	0	2	0	0	0	0	0	-4
Team							0	0	0			0		0				
<b>Totals</b>				5-13	1-4	1-2	1	8	9	8	3	12	3	5	0	0	0	-12

Shooting By Period		
2 <sup>nd</sup> FG%	5-13	38.5%
3PT%	1-4	25.0%
FT%	1-2	50%
GM FG%	5-13	38.5%
3PT%	1-4	25.0%
FT%	1-2	50.0%

Dead Ball Rebounds: 1, 0

Technical Fouls::NONE

	NDSU	Kansas
Biggest lead	0 (1 <sup>st</sup> 10:00)	13 (2 <sup>nd</sup> 9:45)
Best Scoring Run	7(2 <sup>nd</sup> 7:33)	3(2 <sup>nd</sup> 3:30)
Lead Changes	0	
Times Tied	0	
Time with Lead	00:00	09:45

	NDSU	Kansas
Points from		
Turnovers	3	0
Paint	6	2
Second Chance	6	2
Fast Breaks	0	0
Bench	12	4

	Period by Period Scoring				
	1st	2nd	3rd	4th	TOT
NDSU	5	24	23	20	72
Kansas	18	12	24	15	69



**North Dakota St. at Kansas**

12/21/20 Allen Fieldhouse, Lawrence  
2020-21 Women's Basketball

Game Time: 1:00 PM  
Game Duration: 1:57  
Attendance: 456

Officials: Tiara Cruse, Greg Small, Nick Marshall

**North Dakota St. - 29**

NO.	Name	F	Min	FG			Rebounds			Fouls		TP	AS	TO	ST	Blocks		+/-
				M-A	M-A	M-A	OR	DR	TOT	PF	FD					BS	BA	
12	Marie Olson	F	13:11	2-3	2-2	0-2	1	3	4	0	2	6	1	2	0	1	0	5
34	Emily Dietz	F	16:04	2-5	0-0	0-0	2	2	4	0	1	4	0	1	3	1	0	0
5	Ryan Cobbins	G	04:01	0-0	0-0	0-0	0	0	0	2	0	0	0	0	0	0	0	-7
11	Heaven Hamling	G	13:23	2-7	0-2	0-0	0	0	0	0	0	4	2	0	1	0	0	-3
22	Michelle Gaislerova	G	11:49	0-5	0-3	0-0	0	2	2	0	1	0	0	0	0	0	1	-6
23	Olivia Skibiel		06:31	2-4	2-3	0-0	0	1	1	2	0	6	0	0	0	0	0	-5
24	Abby Schulte		16:17	0-4	0-2	3-4	0	1	1	1	2	3	1	1	0	0	0	5
25	Britney Epperson		03:56	0-2	0-0	0-2	2	0	2	1	2	0	0	0	0	0	0	-1
0	Reneya Hopkins		07:15	1-3	0-0	2-2	0	1	1	1	1	4	1	0	0	0	1	2
3	Kadie Deaton		07:33	1-3	0-0	0-0	1	1	2	0	1	2	0	0	0	0	1	5
Team							0	3	3			0		0				
<b>Totals</b>				10-36	4-12	5-10	6	14	20	7	10	29	5	4	4	2	3	-1

Shooting By Period		
1 <sup>st</sup> FG%	2-15	13.3%
3PT%	0-5	0.0%
FT%	1-2	50%
2 <sup>nd</sup> FG%	8-21	38.1%
3PT%	4-7	57.1%
FT%	4-8	50%
GM FG%	10-36	27.8%
3PT%	4-12	33.3%
FT%	5-10	50.0%

Dead Ball Rebounds: 4, 1

Technical Fouls::NONE

**Kansas - 30**

NO.	Name	F	Min	FG			Rebounds			Fouls		TP	AS	TO	ST	Blocks		+/-
				M-A	M-A	M-A	OR	DR	TOT	PF	FD					BS	BA	
1	Tina Stephens	F	13:48	5-9	1-2	1-2	1	1	2	1	1	12	0	0	1	0	1	9
11	Ioanna Chatzileonti	F	14:13	0-3	0-2	0-0	1	6	7	1	1	0	0	1	0	2	0	2
5	Aniya Thomas	G	14:49	3-5	0-1	0-0	0	1	1	2	0	6	1	1	0	0	0	9
15	Zakiyah Franklin	G	17:30	1-4	0-0	1-1	0	4	4	0	2	3	3	1	0	0	0	-1
20	Julie Brosseau	G	14:57	1-2	0-1	0-0	0	3	3	0	1	2	0	2	0	0	0	-1
21	Brooklyn Mitchell		06:04	1-2	0-0	1-2	0	0	0	2	2	3	0	1	2	0	0	1
35	Bailey Helgren		07:13	0-0	0-0	0-0	0	3	3	0	0	0	0	1	0	1	0	-2
25	Chandler Prater		06:40	1-3	0-1	0-0	0	2	2	2	0	2	1	0	0	0	1	-5
12	Katrine Jessen		01:50	0-0	0-0	0-0	0	1	1	2	0	0	0	1	0	0	0	-3
10	Emma Merriweather		02:56	1-1	0-0	0-0	0	0	0	0	0	2	0	0	0	0	0	-4
Team							0	0	0			0		0				
<b>Totals</b>				13-29	1-7	3-5	2	21	23	10	7	30	5	8	3	3	2	1

Shooting By Period		
1 <sup>st</sup> FG%	8-16	50.0%
3PT%	0-3	0.0%
FT%	2-3	66.7%
2 <sup>nd</sup> FG%	5-13	38.5%
3PT%	1-4	25.0%
FT%	1-2	50%
GM FG%	13-29	44.8%
3PT%	1-7	14.3%
FT%	3-5	60.0%

Dead Ball Rebounds: 1, 0

Technical Fouls::NONE

	NDSU	Kansas
Biggest lead	2 (1 <sup>st</sup> 9:29)	13 (1 <sup>st</sup> 1:29)
Best Scoring Run	7(2 <sup>nd</sup> 7:33)	13(1 <sup>st</sup> 4:31)
Lead Changes	1	
Times Tied	1	
Time with Lead	00:15	18:03

Points from	NDSU	Kansas
Turnovers	3	2
Paint	10	16
Second Chance	6	2
Fast Breaks	1	4
Bench	15	7

	Period by Period Scoring				
	1st	2nd	3rd	4th	TOT
NDSU	5	24	23	20	72
Kansas	18	12	24	15	69



## North Dakota St. at Kansas

12/21/20 Allen Fieldhouse, Lawrence  
2020-21 Women's Basketball

Game Time: 1:00 PM

Game Duration: 1:57

Attendance: 456

Officials: Tiara Cruse, Greg Small, Nick Marshall

## Period 3

## Quarter Starters:

<b>Kansas</b>	1 Stephens T	5 Thomas A	11 Chatzileonti I	15 Franklin Z	20 Brosseau J
<b>NDSU</b>	5 Cobbins R	11 Hamling H	12 Olson M	22 Gaislerova M	34 Dietz E

Game Time	Kansas	Score	Diff	NDSU
10:00	10 MERRIWEATHER E substitution out			
10:00	25 PRATER C substitution out			
10:00	1 STEPHENS T substitution in			
10:00	5 THOMAS A substitution in			
10:00				0 HOPKINS R substitution out
10:00				3 DEATON K substitution out
10:00				24 SCHULTE A substitution out
10:00				5 COBBINS R substitution in
10:00				11 HAMLING H substitution in
10:00				22 GAISLEROVA M substitution in
09:49	11 CHATZILEONTI I foul shooting (2 - 1)			5 COBBINS R foul drawn (1)
09:49		<b>30-30</b>	<b>0</b>	5 COBBINS R free throw 1 - 2 made (1)
09:49				5 COBBINS R free throw 2 - 2 missed
09:49	11 CHATZILEONTI I defensive rebound (8)			
09:33	1 STEPHENS T foul drawn (2)			12 OLSON M foul personal (1 - 1)
09:26	1 STEPHENS T 2pt FG in the paint, layup made (14)	<b>32-30</b>	<b>2</b>	
09:26	20 BROSSEAU J assist (1)			
09:14		<b>32-32</b>	<b>0</b>	11 HAMLING H 2pt FG in the paint, driving layup made (6)
08:55	5 THOMAS A 3pt FG , jump shot missed			
08:51				11 HAMLING H defensive rebound (1)
08:46		<b>32-34</b>	<b>-2</b>	11 HAMLING H 2pt FG in the paint, driving layup made (8)
08:30	20 BROSSEAU J 3pt FG , jump shot missed			
08:24	15 FRANKLIN Z offensive rebound (5)			
08:21	20 BROSSEAU J 3pt FG second chance, step back jump shot missed			
08:16				34 DIETZ E defensive rebound (5)
08:09	5 THOMAS A foul personal (3 - 2)			22 GAISLEROVA M foul drawn (2)
08:09	5 THOMAS A substitution out			
08:09	21 MITCHELL B substitution in			
08:09				12 OLSON M substitution out
08:09				23 SKIBIEL O substitution in
08:03		<b>32-36</b>	<b>-4</b>	11 HAMLING H 2pt FG outside the paint, jump shot made (10)
08:03				34 DIETZ E assist (1)
07:48	21 MITCHELL B 2pt FG in the paint, driving layup made (5)	<b>34-36</b>	<b>-2</b>	
07:29	1 STEPHENS T foul personal (2 - 3)			22 GAISLEROVA M foul drawn (3)
07:29	11 CHATZILEONTI I substitution out			
07:29	35 HELGREN B substitution in			
07:24				23 SKIBIEL O 2pt FG outside the paint, jump shot missed
07:21				offensive dead ball rebound (6)
07:21	35 HELGREN B foul loose ball (1 - 4)			34 DIETZ E foul drawn (2)
07:10		<b>34-38</b>	<b>-4</b>	34 DIETZ E 2pt FG second chance in the paint, hook shot made (6)
07:10				23 SKIBIEL O assist (1)
07:01	35 HELGREN B 2pt FG in the paint, layup made (2)	<b>36-38</b>	<b>-2</b>	



**North Dakota St. at Kansas**

12/21/20 Allen Fieldhouse, Lawrence  
2020-21 Women's Basketball

**Game Time:** 1:00 PM  
**Game Duration:** 1:57  
**Attendance:** 456

**Officials:** Tiara Cruse, Greg Small, Nick Marshall

Game Time	Kansas	Score	Diff	NDSU
07:01	21 MITCHELL B assist (1)			
06:46				11 HAMLING H 3pt FG , jump shot missed
06:42	1 STEPHENS T defensive rebound (3)			
06:27	21 MITCHELL B 2pt FG in the paint, jump shot missed			
06:22				5 COBBINS R defensive rebound (1)
06:16				22 GAISLEROVA M 2pt FG in the paint, floating jump shot missed
06:13	20 BROSSAU J defensive rebound (4)			
06:07	21 MITCHELL B foul drawn (3)			22 GAISLEROVA M foul shooting (1 - 2)
06:07	15 FRANKLIN Z substitution out			
06:07	25 PRATER C substitution in			
06:07				5 COBBINS R substitution out
06:07				22 GAISLEROVA M substitution out
06:07				3 DEATON K substitution in
06:07				24 SCHULTE A substitution in
06:07	21 MITCHELL B free throw 1 - 2 made (6)	<b>37-38</b>	<b>-1</b>	
06:07	21 MITCHELL B free throw 2 - 2 made (7)	<b>38-38</b>	<b>0</b>	
05:39		<b>38-40</b>	<b>-2</b>	11 HAMLING H 2pt FG outside the paint, floating jump shot made (12)
05:15	1 STEPHENS T 2pt FG in the paint, driving layup missed			
05:12				3 DEATON K defensive rebound (3)
04:55		<b>38-43</b>	<b>-5</b>	24 SCHULTE A 3pt FG , jump shot made (6)
04:55				11 HAMLING H assist (3)
04:41	1 STEPHENS T foul drawn (3)			34 DIETZ E foul shooting (1 - 3)
04:41	Timeout media			
04:41				34 DIETZ E substitution out
04:41				25 EPPERSON B substitution in
04:41	1 STEPHENS T free throw 1 - 2 made (15)	<b>39-43</b>	<b>-4</b>	
04:41	1 STEPHENS T free throw 2 - 2 missed			
04:41				23 SKIBIEL O defensive rebound (2)
04:36		<b>39-45</b>	<b>-6</b>	3 DEATON K 2pt FG fast break outside the paint, jump shot made (4)
04:36				24 SCHULTE A assist (2)
04:30	25 PRATER C 3pt FG , jump shot missed			
04:30				3 DEATON K defensive rebound (4)
04:16				24 SCHULTE A 3pt FG , jump shot missed
04:16	25 PRATER C defensive rebound (3)			
03:49	21 MITCHELL B foul drawn (4)			25 EPPERSON B foul shooting (2 - 4)
03:49	1 STEPHENS T substitution out			
03:49	11 CHATZILEONTI I substitution in			
03:49				11 HAMLING H substitution out
03:49				23 SKIBIEL O substitution out
03:49				24 SCHULTE A substitution out
03:49				25 EPPERSON B substitution out
03:49				0 HOPKINS R substitution in
03:49				5 COBBINS R substitution in
03:49				12 OLSON M substitution in
03:49				34 DIETZ E substitution in
03:49	21 MITCHELL B free throw 1 - 2 made (8)	<b>40-45</b>	<b>-5</b>	
03:49	21 MITCHELL B free throw 2 - 2 missed			



**North Dakota St. at Kansas**

12/21/20 Allen Fieldhouse, Lawrence  
2020-21 Women's Basketball

**Game Time:** 1:00 PM  
**Game Duration:** 1:57  
**Attendance:** 456

**Officials:** Tiara Cruse, Greg Small, Nick Marshall

Game Time	Kansas	Score	Diff	NDSU
03:48	offensive rebound (29)			
03:36	11 CHATZILEONTI I 2pt FG second chance in the paint, layup made (2)	<b>42-45</b>	<b>-3</b>	
03:22	21 MITCHELL B foul drawn (5)			34 DIETZ E foul offensive (2 - 5)
03:22				34 DIETZ E turnover offensive (2)
03:01	20 BROSSEAU J 2pt FG from turnover in the paint, floating jump shot made (4)	<b>44-45</b>	<b>-1</b>	
02:44	25 PRATER C foul personal (3 - 5)			3 DEATON K foul drawn (2)
02:44	35 HELGREN B substitution out			
02:44	1 STEPHENS T substitution in			
02:44	25 PRATER C substitution out			
02:44	15 FRANKLIN Z substitution in			
02:44		<b>44-46</b>	<b>-2</b>	3 DEATON K free throw 1 - 2 made (5)
02:44		<b>44-47</b>	<b>-3</b>	3 DEATON K free throw 2 - 2 made (6)
02:31	20 BROSSEAU J foul drawn (2)			34 DIETZ E foul shooting (3 - 6)
02:31				34 DIETZ E substitution out
02:31				25 EPPERSON B substitution in
02:31	20 BROSSEAU J free throw 1 - 2 made (5)	<b>45-47</b>	<b>-2</b>	
02:31	20 BROSSEAU J free throw 2 - 2 made (6)	<b>46-47</b>	<b>-1</b>	
02:23				Timeout 30 Sec
02:10				3 DEATON K 2pt FG outside the paint, jump shot missed
02:05	21 MITCHELL B defensive rebound (1)			
02:04	21 MITCHELL B foul drawn (6)			0 HOPKINS R foul shooting (2 - 7)
02:04	21 MITCHELL B free throw fast break 1 - 2 made (9)	<b>47-47</b>	<b>0</b>	
02:04	21 MITCHELL B free throw fast break 2 - 2 made (10)	<b>48-47</b>	<b>1</b>	
02:04				0 HOPKINS R substitution out
02:04				11 HAMLING H substitution in
01:51	21 MITCHELL B steal (3)			11 HAMLING H turnover lost ball (1)
01:48	20 BROSSEAU J foul drawn (3)			12 OLSON M foul shooting (2 - 8)
01:48	20 BROSSEAU J free throw fast break 1 - 2 made (7)	<b>49-47</b>	<b>2</b>	
01:48	20 BROSSEAU J free throw fast break 2 - 2 made (8)	<b>50-47</b>	<b>3</b>	
01:38	1 STEPHENS T steal (2)			12 OLSON M turnover bad pass (3)
01:33	21 MITCHELL B 2pt FG fast break from turnover in the paint, driving layup made (12)	<b>52-47</b>	<b>5</b>	
01:33	1 STEPHENS T assist (1)			
01:27				Timeout 30 Sec
01:27				12 OLSON M substitution out
01:27				23 SKIBIEL O substitution in
01:19		<b>52-50</b>	<b>2</b>	23 SKIBIEL O 3pt FG , jump shot made (9)
01:19				11 HAMLING H assist (4)
00:58	21 MITCHELL B turnover bad pass (2)			
00:32		<b>52-52</b>	<b>0</b>	3 DEATON K 2pt FG from turnover outside the paint, jump shot made (8)
00:32				25 EPPERSON B assist (1)
00:02	20 BROSSEAU J foul drawn (4)			3 DEATON K foul personal (1 - 9)
00:02	20 BROSSEAU J free throw 1 - 2 made (9)	<b>53-52</b>	<b>1</b>	
00:02	20 BROSSEAU J free throw 2 - 2 made (10)	<b>54-52</b>	<b>2</b>	
<b>END OF PERIOD</b>				
<b>Kansas 54-52 NDSU</b>				



**North Dakota St. at Kansas**

12/21/20 Allen Fieldhouse, Lawrence  
2020-21 Women's Basketball

Game Time: 1:00 PM  
Game Duration: 1:57  
Attendance: 456

Officials: Tiara Cruse, Greg Small, Nick Marshall

**North Dakota St. - 23**

NO.	Name	F	Min	FG			Rebounds			Fouls		TP	AS	TO	ST	Blocks		+/-
				M-A	3P	FT	OR	DR	TOT	PF	FD					BS	BA	
12	Marie Olson	F	04:13	0-0	0-0	0-0	0	0	0	2	0	0	0	1	0	0	0	-8
34	Emily Dietz	F	06:37	1-1	0-0	0-0	0	1	1	3	1	2	1	1	0	0	0	3
5	Ryan Cobbins	G	07:42	0-0	0-0	1-2	0	1	1	0	1	1	0	0	0	0	0	-5
11	Heaven Hamling	G	08:15	4-5	0-1	0-0	0	1	1	0	0	8	2	1	0	0	0	6
22	Michelle Gaislerova	G	03:53	0-1	0-0	0-0	0	0	0	1	2	0	0	0	0	0	0	3
23	Olivia Skibieli		05:47	1-2	1-1	0-0	0	1	1	0	0	3	1	0	0	0	0	7
3	Kadie Deaton		06:07	2-3	0-0	2-2	0	2	2	1	1	6	0	0	0	0	0	-4
24	Abby Schulte		02:18	1-2	1-2	0-0	0	0	0	0	0	3	1	0	0	0	0	4
25	Britney Epperson		03:23	0-0	0-0	0-0	0	0	0	1	0	0	1	0	0	0	0	-4
0	Reneya Hopkins		01:45	0-0	0-0	0-0	0	0	0	1	0	0	0	0	0	0	0	-7
Team							0	0	0			0						
<b>Totals</b>				9-14	2-4	3-4	0	6	6	9	5	23	6	3	0	0	0	-1

Shooting By Period		
3rd FG%	9-14	64.3%
3PT%	2-4	50.0%
FT%	3-4	75%
GM FG%	9-14	64.3%
3PT%	2-4	50.0%
FT%	3-4	75.0%

Dead Ball Rebounds: 1, 0

Technical Fouls::NONE

**Kansas - 24**

NO.	Name	F	Min	FG			Rebounds			Fouls		TP	AS	TO	ST	Blocks		+/-
				M-A	3P	FT	OR	DR	TOT	PF	FD					BS	BA	
1	Tina Stephens	F	08:55	1-2	0-0	1-2	0	1	1	1	2	3	1	0	1	0	0	-4
11	Ioanna Chatzileonti	F	06:20	1-1	0-0	0-0	0	1	1	1	0	2	0	0	0	0	0	5
5	Aniya Thomas	G	01:51	0-1	0-1	0-0	0	0	0	1	0	0	0	0	0	0	0	-3
15	Zakiyah Franklin	G	06:37	0-0	0-0	0-0	1	0	1	0	0	0	0	0	0	0	0	0
20	Julie Brosseau	G	10:00	1-3	0-2	6-6	0	1	1	0	3	8	1	0	0	0	0	1
10	Emma Merriweather		00:00															
21	Brooklyn Mitchell		08:09	2-3	0-0	5-6	0	1	1	0	4	9	1	1	1	0	0	4
35	Bailey Helgren		04:45	1-1	0-0	0-0	0	0	0	1	0	2	0	0	0	0	0	1
25	Chandler Prater		03:23	0-1	0-1	0-0	0	1	1	1	0	0	0	0	0	0	0	1
Team							1	0	1			0						
<b>Totals</b>				6-12	0-4	12-14	2	5	7	5	9	24	3	1	2	0	0	1

Shooting By Period		
3rd FG%	6-12	50.0%
3PT%	0-4	0.0%
FT%	12-14	85.7%
GM FG%	6-12	50.0%
3PT%	0-4	0.0%
FT%	12-14	85.7%

Dead Ball Rebounds: 0, 0

Technical Fouls::NONE

	NDSU	Kansas
Biggest lead	6 (3 <sup>rd</sup> 4:36)	5 (3 <sup>rd</sup> 1:33)
Best Scoring Run	6(3 <sup>rd</sup> 8:03)	8(3 <sup>rd</sup> 1:33)
Lead Changes	2	
Times Tied	5	
Time with Lead	06:14	01:46

Points from	NDSU	Kansas
Turnovers	2	6
Paint	6	12
Second Chance	2	2
Fast Breaks	2	6
Bench	12	11

	Period by Period Scoring				
	1st	2nd	3rd	4th	TOT
NDSU	5	24	23	20	72
Kansas	18	12	24	15	69



**North Dakota St. at Kansas**

12/21/20 Allen Fieldhouse, Lawrence  
2020-21 Women's Basketball

**Game Time:** 1:00 PM  
**Game Duration:** 1:57  
**Attendance:** 456

**Officials:** Tiara Cruse, Greg Small, Nick Marshall

**Period 4**

**Quarter Starters:**

<b>Kansas</b>	1 Stephens T	11 Chatzileonti I	15 Franklin Z	20 Brosseau J	21 Mitchell B
<b>NDSU</b>	3 Deaton K	5 Cobbins R	11 Hamling H	23 Skibiell O	25 Epperson B

Game Time	Kansas	Score	Diff	NDSU
09:46	11 CHATZILEONTI I 2pt FG in the paint, layup made (4)	<b>56-52</b>	<b>4</b>	
09:46	1 STEPHENS T assist (2)			
09:25	1 STEPHENS T foul shooting (3 - 1)			5 COBBINS R foul drawn (2)
09:25				5 COBBINS R free throw 1 - 2 missed
09:25				offensive dead ball rebound (7)
09:25		<b>56-53</b>	<b>3</b>	5 COBBINS R free throw 2 - 2 made (2)
09:02	1 STEPHENS T 2pt FG in the paint, layup missed			
08:59				25 EPPERSON B defensive rebound (3)
08:53		<b>56-55</b>	<b>1</b>	11 HAMLING H 2pt FG in the paint, driving layup made (14)
08:34	1 STEPHENS T 2pt FG outside the paint, jump shot missed			
08:32				defensive dead ball rebound (8)
08:32	11 CHATZILEONTI I foul loose ball (3 - 2)			25 EPPERSON B foul drawn (3)
08:32				5 COBBINS R substitution out
08:32				23 SKIBIEL O substitution out
08:32				25 EPPERSON B substitution out
08:32				12 OLSON M substitution in
08:32				24 SCHULTE A substitution in
08:32				34 DIETZ E substitution in
08:32	1 STEPHENS T substitution out			
08:32	15 FRANKLIN Z substitution out			
08:32	5 THOMAS A substitution in			
08:32	35 HELGREN B substitution in			
08:13				3 DEATON K 3pt FG , jump shot missed
08:08	35 HELGREN B defensive rebound (4)			
08:02	11 CHATZILEONTI I 2pt FG in the paint, layup missed			
07:59				12 OLSON M defensive rebound (5)
07:53		<b>56-58</b>	<b>-2</b>	12 OLSON M 3pt FG , jump shot made (9)
07:53				11 HAMLING H assist (5)
07:28	21 MITCHELL B 3pt FG , jump shot made (15)	<b>59-58</b>	<b>1</b>	
07:28	11 CHATZILEONTI I assist (1)			
07:19	20 BROSSEAU J foul personal (1 - 3)			11 HAMLING H foul drawn (1)
07:19	11 CHATZILEONTI I substitution out			
07:19	1 STEPHENS T substitution in			
07:19				11 HAMLING H substitution out
07:19				0 HOPKINS R substitution in
07:07		<b>59-60</b>	<b>-1</b>	34 DIETZ E 2pt FG in the paint, hook shot made (8)
07:07				0 HOPKINS R assist (2)
06:56	20 BROSSEAU J 3pt FG , jump shot blocked			
06:56				24 SCHULTE A block (1)
06:56	offensive rebound (32)			
06:56				3 DEATON K substitution out
06:56				5 COBBINS R substitution in



**North Dakota St. at Kansas**

12/21/20 Allen Fieldhouse, Lawrence  
2020-21 Women's Basketball

**Game Time:** 1:00 PM  
**Game Duration:** 1:57  
**Attendance:** 456

**Officials:** Tiara Cruse, Greg Small, Nick Marshall

Game Time	Kansas	Score	Diff	NDSU
06:49	21 MITCHELL B 2pt FG second chance in the paint, layup blocked			
06:49				34 DIETZ E block (2)
06:41				12 OLSON M defensive rebound (6)
06:37				5 COBBINS R 2pt FG in the paint, layup missed
06:32	35 HELGREN B defensive rebound (5)			
06:30	20 BROSSEAU J 3pt FG , jump shot missed			
06:26				5 COBBINS R defensive rebound (2)
06:08				24 SCHULTE A 2pt FG outside the paint, jump shot missed
06:03	1 STEPHENS T defensive rebound (4)			
05:56	5 THOMAS A foul drawn (1)			24 SCHULTE A foul shooting (2 - 1)
05:56	20 BROSSEAU J substitution out			
05:56	21 MITCHELL B substitution out			
05:56	15 FRANKLIN Z substitution in			
05:56	25 PRATER C substitution in			
05:56				24 SCHULTE A substitution out
05:56				11 HAMLING H substitution in
05:56	5 THOMAS A free throw 1 - 2 missed			
05:56	offensive dead ball rebound (2)			
05:56	5 THOMAS A free throw 2 - 2 missed			
05:54				12 OLSON M defensive rebound (7)
05:41	25 PRATER C foul shooting (4 - 4)			5 COBBINS R foul drawn (3)
05:41	1 STEPHENS T substitution out			
05:41	11 CHATZILEONTI I substitution in			
05:41		<b>59-61</b>	<b>-2</b>	5 COBBINS R free throw 1 - 2 made (3)
05:41		<b>59-62</b>	<b>-3</b>	5 COBBINS R free throw 2 - 2 made (4)
05:19	11 CHATZILEONTI I 2pt FG outside the paint, jump shot made (6)	<b>61-62</b>	<b>-1</b>	
05:19	5 THOMAS A assist (2)			
04:46				0 HOPKINS R 3pt FG , jump shot missed
04:45				offensive dead ball rebound (9)
04:45				turnover shot clock (8)
04:45	Timeout media			
04:32	25 PRATER C 2pt FG from turnover in the paint, floating jump shot made (4)	<b>63-62</b>	<b>1</b>	
04:25	15 FRANKLIN Z foul drawn (3)			0 HOPKINS R foul offensive (3 - 2)
04:25				0 HOPKINS R turnover offensive (1)
04:12	25 PRATER C 2pt FG from turnover in the paint, driving layup missed			
04:10	offensive rebound (35)			
04:07	5 THOMAS A foul offensive (4 - 5)			0 HOPKINS R foul drawn (2)
04:07	5 THOMAS A turnover offensive (2)			
04:06				0 HOPKINS R substitution out
04:06				3 DEATON K substitution in
03:39		<b>63-64</b>	<b>-1</b>	5 COBBINS R 2pt FG from turnover in the paint, driving layup made (6)
03:21	15 FRANKLIN Z 3pt FG , jump shot missed			
03:15	11 CHATZILEONTI I offensive rebound (9)			
03:12	Timeout 30 Sec			
03:12	5 THOMAS A substitution out			
03:12	35 HELGREN B substitution out			





**North Dakota St. at Kansas**

12/21/20 Allen Fieldhouse, Lawrence  
2020-21 Women's Basketball

**Game Time:** 1:00 PM  
**Game Duration:** 1:57  
**Attendance:** 456

**Officials:** Tiara Cruse, Greg Small, Nick Marshall

Game Time	Kansas	Score	Diff	NDSU
03:12	1 STEPHENS T substitution in			
03:12	21 MITCHELL B substitution in			
03:00	11 CHATZILEONTI I 2pt FG second chance in the paint, jump shot missed			
02:57				3 DEATON K defensive rebound (5)
02:52				5 COBBINS R 3pt FG , jump shot missed
02:47				5 COBBINS R offensive rebound (3)
02:45	21 MITCHELL B foul shooting (3 - 6)			5 COBBINS R foul drawn (4)
02:45	25 PRATER C substitution out			
02:45	20 BROSSEAU J substitution in			
02:45		<b>63-65</b>	<b>-2</b>	5 COBBINS R free throw 1 - 2 made (7)
02:45		<b>63-66</b>	<b>-3</b>	5 COBBINS R free throw 2 - 2 made (8)
02:25	11 CHATZILEONTI I 2pt FG in the paint, hook shot missed			
02:21				5 COBBINS R defensive rebound (4)
02:17				5 COBBINS R 2pt FG in the paint, driving layup missed
02:14	11 CHATZILEONTI I defensive rebound (10)			
02:07	15 FRANKLIN Z 2pt FG outside the paint, jump shot blocked			
02:07				12 OLSON M block (2)
02:07	offensive rebound (38)			
02:02	21 MITCHELL B turnover lost ball (3)			11 HAMLING H steal (2)
01:57	20 BROSSEAU J steal (1)			11 HAMLING H turnover bad pass (2)
01:43	21 MITCHELL B 2pt FG from turnover in the paint, driving layup missed			
01:38				3 DEATON K defensive rebound (6)
01:12		<b>63-68</b>	<b>-5</b>	34 DIETZ E 2pt FG in the paint, hook shot made (10)
01:04	15 FRANKLIN Z foul drawn (4)			12 OLSON M foul shooting (3 - 3)
01:04	15 FRANKLIN Z free throw fast break 1 - 2 made (4)	<b>64-68</b>	<b>-4</b>	
01:04	15 FRANKLIN Z free throw fast break 2 - 2 made (5)	<b>65-68</b>	<b>-3</b>	
01:04				12 OLSON M turnover (4)
00:57	20 BROSSEAU J 3pt FG from turnover, jump shot missed			
00:54	11 CHATZILEONTI I offensive rebound (11)			
00:53	1 STEPHENS T foul drawn (4)			12 OLSON M foul shooting (4 - 4)
00:53	1 STEPHENS T free throw 1 - 2 missed			
00:53	offensive dead ball rebound (3)			
00:53	1 STEPHENS T free throw 2 - 2 made (16)	<b>66-68</b>	<b>-2</b>	
00:27				11 HAMLING H 2pt FG in the paint, driving layup blocked
00:27	11 CHATZILEONTI I block (3)			
00:27	11 CHATZILEONTI I defensive rebound (12)			
00:27	Timeout 30 Sec			
00:22	15 FRANKLIN Z 3pt FG , jump shot missed			
00:18				12 OLSON M defensive rebound (8)
00:19	1 STEPHENS T foul personal (4 - 7)			12 OLSON M foul drawn (3)
00:19		<b>66-69</b>	<b>-3</b>	12 OLSON M free throw fast break 1 - 2 made (10)
00:19		<b>66-70</b>	<b>-4</b>	12 OLSON M free throw fast break 2 - 2 made (11)
00:19	Timeout 30 Sec			
00:15	1 STEPHENS T 2pt FG in the paint, layup missed			
00:14				34 DIETZ E defensive rebound (6)
00:14	11 CHATZILEONTI I foul personal (4 - 8)			34 DIETZ E foul drawn (3)
00:14				34 DIETZ E free throw fast break 1 - 2 missed
00:14				offensive dead ball rebound (10)



Official Basketball Play by Play - 4th Period

**North Dakota St. at Kansas**

12/21/20 Allen Fieldhouse, Lawrence  
2020-21 Women's Basketball

**Game Time:** 1:00 PM  
**Game Duration:** 1:57  
**Attendance:** 456

**Officials:** Tiara Cruse, Greg Small, Nick Marshall

Game Time	Kansas	Score	Diff	NDSU
00:14		<b>66-71</b>	<b>-5</b>	34 DIETZ E free throw fast break 2 - 2 made (11)
00:14	Timeout 60 Sec			
00:11	20 BROSSEAU J foul drawn (5)			3 DEATON K foul shooting (2 - 5)
00:11	20 BROSSEAU J free throw fast break 1 - 3 made (11)	<b>67-71</b>	<b>-4</b>	
00:11	20 BROSSEAU J free throw fast break 2 - 3 made (12)	<b>68-71</b>	<b>-3</b>	
00:11	20 BROSSEAU J free throw fast break 3 - 3 made (13)	<b>69-71</b>	<b>-2</b>	
00:11				Timeout 60 Sec
00:11	1 STEPHENS T substitution out			
00:11	11 CHATZILEONTI I substitution out			
00:11	25 PRATER C substitution in			
00:11	35 HELGREN B substitution in			
00:10	15 FRANKLIN Z foul personal (1 - 9)			5 COBBINS R foul drawn (5)
00:10	25 PRATER C substitution out			
00:10	35 HELGREN B substitution out			
00:10	1 STEPHENS T substitution in			
00:10	11 CHATZILEONTI I substitution in			
00:10		<b>69-72</b>	<b>-3</b>	5 COBBINS R free throw fast break 1 - 2 made (9)
00:10				5 COBBINS R free throw fast break 2 - 2 missed
00:08	defensive rebound (41)			
00:03	21 MITCHELL B 2pt FG in the paint, layup missed			
00:00				5 COBBINS R defensive rebound (5)
<b>END OF GAME</b>				
<b>Kansas 69-72 NDSU</b>				



**North Dakota St. at Kansas**

12/21/20 Allen Fieldhouse, Lawrence  
2020-21 Women's Basketball

Game Time: 1:00 PM  
Game Duration: 1:57  
Attendance: 456

Officials: Tiara Cruse, Greg Small, Nick Marshall

**North Dakota St. - 20**

NO.	Name	F	Min	FG			Rebounds			Fouls		TP	AS	TO	ST	Blocks		+/-
				M-A	3P	FT	OR	DR	TOT	PF	FD					BS	BA	
12	Marie Olson	F	08:32	1-1	1-1	2-2	0	4	4	2	1	5	0	1	0	1	0	4
34	Emily Dietz	F	08:32	2-2	0-0	1-2	0	1	1	0	1	5	0	0	0	1	0	4
5	Ryan Cobbins	G	08:24	1-4	0-1	6-8	1	3	4	0	4	8	0	0	0	0	0	3
11	Heaven Hamling	G	08:37	1-2	0-0	0-0	0	0	0	0	1	2	1	1	1	0	1	3
22	Michelle Gaislerova	G	00:00															
23	Olivia Skibiel		01:28	0-0	0-0	0-0	0	0	0	0	0	0	0	0	0	0	0	1
25	Britney Epperson		01:28	0-0	0-0	0-0	0	1	1	0	1	0	0	0	0	0	0	1
24	Abby Schulte		02:36	0-1	0-0	0-0	0	0	0	1	0	0	0	0	0	1	0	2
0	Reneya Hopkins		03:13	0-1	0-1	0-0	0	0	0	1	1	0	1	1	0	0	0	0
3	Kadie Deaton		07:10	0-1	0-1	0-0	0	2	2	1	0	0	0	0	0	0	0	7
Team							0	0	0			0		1				
<b>Totals</b>				5-12	1-4	9-12	1	11	12	5	9	20	2	4	1	3	1	5

Shooting By Period		
4 <sup>th</sup> FG%	5-12	41.7%
3PT%	1-4	25.0%
FT%	9-12	75%
GM FG%	5-12	41.7%
3PT%	1-4	25.0%
FT%	9-12	75.0%

Dead Ball Rebounds: 3, 1

Technical Fouls::NONE

**Kansas - 15**

NO.	Name	F	Min	FG			Rebounds			Fouls		TP	AS	TO	ST	Blocks		+/-
				M-A	3P	FT	OR	DR	TOT	PF	FD					BS	BA	
1	Tina Stephens	F	06:17	0-3	0-0	1-2	0	1	1	2	1	1	1	0	0	0	0	-5
11	Ioanna Chatzileonti	F	08:21	2-5	0-0	0-0	2	2	4	2	0	4	1	0	0	1	0	-3
5	Aniya Thomas	G	05:20	0-0	0-0	0-2	0	0	0	1	1	0	1	1	0	0	0	-2
15	Zakiyah Franklin	G	07:24	0-3	0-2	2-2	0	0	0	1	2	2	0	0	0	0	1	-3
20	Julie Brosseau	G	06:49	0-3	0-3	3-3	0	0	0	1	1	3	0	0	1	0	1	-5
35	Bailey Helgren		05:21	0-0	0-0	0-0	0	2	2	0	0	0	0	0	0	0	0	-2
25	Chandler Prater		03:12	1-2	0-0	0-0	0	0	0	1	0	2	0	0	0	0	0	0
21	Brooklyn Mitchell		07:16	1-4	1-1	0-0	0	0	0	1	0	3	0	1	0	0	1	-5
Team							3	1	4			0		0				
<b>Totals</b>				4-20	1-6	6-9	5	6	11	9	5	15	3	2	1	1	3	-5

Shooting By Period		
4 <sup>th</sup> FG%	4-20	20.0%
3PT%	1-6	16.7%
FT%	6-9	66.7%
GM FG%	4-20	20.0%
3PT%	1-6	16.7%
FT%	6-9	66.7%

Dead Ball Rebounds: 2, 0

Technical Fouls::NONE

	NDSU	Kansas
Biggest lead	5 (4 <sup>th</sup> 1:12)	4 (4 <sup>th</sup> 9:46)
Best Scoring Run	6(4 <sup>th</sup> 7:53)	4(4 <sup>th</sup> 4:32)
Lead Changes	5	
Times Tied	0	
Time with Lead	06:39	03:07

Points from	NDSU	Kansas
Turnovers	2	3
Paint	8	4
Second Chance	2	1
Fast Breaks	4	5
Bench	0	5

	Period by Period Scoring				
	1st	2nd	3rd	4th	TOT
NDSU	5	24	23	20	72
Kansas	18	12	24	15	69



**North Dakota St. at Kansas**

12/21/20 Allen Fieldhouse, Lawrence  
2020-21 Women's Basketball

Game Time: 1:00 PM  
Game Duration: 1:57  
Attendance: 456

Officials: Tiara Cruse, Greg Small, Nick Marshall

**North Dakota St. - 43**

NO.	Name	F	Min	FG			Rebounds			Fouls		TP	AS	TO	ST	Blocks		+/-
				M-A	M-A	M-A	OR	DR	TOT	PF	FD					BS	BA	
12	Marie Olson	F	12:45	1-1	1-1	2-2	0	4	4	4	1	5	0	2	0	1	0	-4
34	Emily Dietz	F	15:09	3-3	0-0	1-2	0	2	2	3	2	7	1	1	0	1	0	7
5	Ryan Cobbins	G	16:06	1-4	0-1	7-10	1	4	5	0	5	9	0	0	0	0	0	-2
11	Heaven Hamling	G	16:52	5-7	0-1	0-0	0	1	1	0	1	10	3	2	1	0	1	9
22	Michelle Gaislerova	G	03:53	0-1	0-0	0-0	0	0	0	1	2	0	0	0	0	0	0	3
23	Olivia Skibiel		07:15	1-2	1-1	0-0	0	1	1	0	0	3	1	0	0	0	0	8
3	Kadie Deaton		13:17	2-4	0-1	2-2	0	4	4	2	1	6	0	0	0	0	0	3
24	Abby Schulte		04:54	1-3	1-2	0-0	0	0	0	1	0	3	1	0	0	1	0	6
25	Britney Epperson		04:51	0-0	0-0	0-0	0	1	1	1	1	0	1	0	0	0	0	-3
0	Reneya Hopkins		04:58	0-1	0-1	0-0	0	0	0	2	1	0	1	1	0	0	0	-7
Team							0	0	0			0		1				
<b>Totals</b>				14-26	3-8	12-16	1	17	18	14	14	43	8	7	1	3	1	4

Shooting By Period		
3 <sup>rd</sup> FG%	9-14	64.3%
3PT%	2-4	50.0%
FT%	3-4	75%
4 <sup>th</sup> FG%	5-12	41.7%
3PT%	1-4	25.0%
FT%	9-12	75%
GM FG%	14-26	53.8%
3PT%	3-8	37.5%
FT%	12-16	75.0%

Dead Ball Rebounds: 4, 1

Technical Fouls::NONE

**Kansas - 39**

NO.	Name	F	Min	FG			Rebounds			Fouls		TP	AS	TO	ST	Blocks		+/-
				M-A	M-A	M-A	OR	DR	TOT	PF	FD					BS	BA	
1	Tina Stephens	F	15:12	1-5	0-0	2-4	0	2	2	3	3	4	2	0	1	0	0	-9
11	Ioanna Chatzileonti	F	14:41	3-6	0-0	0-0	2	3	5	3	0	6	1	0	0	1	0	2
5	Aniya Thomas	G	07:11	0-1	0-1	0-2	0	0	0	2	1	0	1	1	0	0	0	-5
15	Zakiah Franklin	G	14:01	0-3	0-2	2-2	1	0	1	1	2	2	0	0	0	0	1	-3
20	Julie Brosseau	G	16:49	1-6	0-5	9-9	0	1	1	1	4	11	1	0	1	0	1	-4
10	Emma Merriweather		00:00															
21	Brooklyn Mitchell		15:25	3-7	1-1	5-6	0	1	1	1	4	12	1	2	1	0	1	-1
35	Bailey Helgren		10:06	1-1	0-0	0-0	0	2	2	1	0	2	0	0	0	0	0	-1
25	Chandler Prater		06:35	1-3	0-1	0-0	0	1	1	2	0	2	0	0	0	0	0	1
Team							4	1	5			0		0				
<b>Totals</b>				10-32	1-10	18-23	7	11	18	14	14	39	6	3	3	1	3	-4

Shooting By Period		
3 <sup>rd</sup> FG%	6-12	50.0%
3PT%	0-4	0.0%
FT%	12-14	85.7%
4 <sup>th</sup> FG%	4-20	20.0%
3PT%	1-6	16.7%
FT%	6-9	66.7%
GM FG%	10-32	31.3%
3PT%	1-10	10.0%
FT%	18-23	78.3%

Dead Ball Rebounds: 2, 0

Technical Fouls::NONE

	NDSU	Kansas
Biggest lead	6 (3 <sup>rd</sup> 4:36)	5 (3 <sup>rd</sup> 1:33)
Best Scoring Run	6(3 <sup>rd</sup> 8:03)	8(3 <sup>rd</sup> 1:33)
Lead Changes	7	
Times Tied	5	
Time with Lead	12:53	05:07

Points from	NDSU	Kansas
Turnovers	4	9
Paint	14	16
Second Chance	4	3
Fast Breaks	6	11
Bench	12	16

	Period by Period Scoring				
	1st	2nd	3rd	4th	TOT
NDSU	5	24	23	20	72
Kansas	18	12	24	15	69



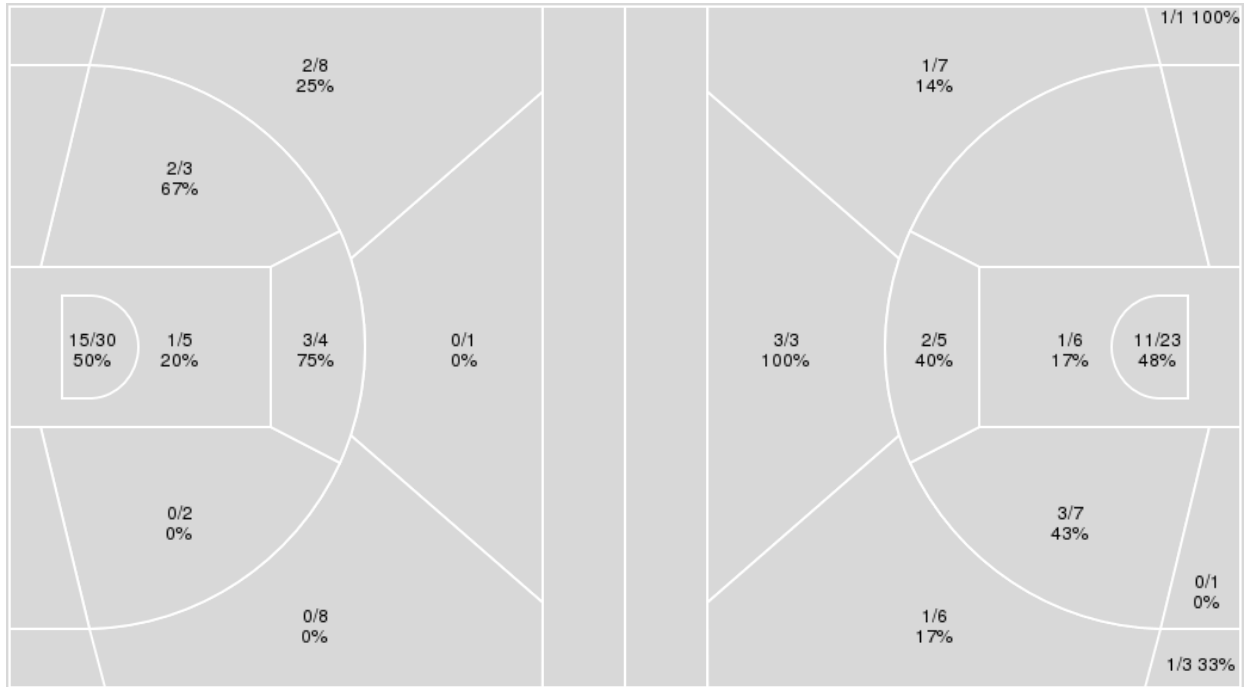
**Officials:** Tiara Cruse, Greg Small, Nick Marshall

{ Players => 0, 1, 4, 5, 10, 11, 12, 13, 15, 20, 21, 25, 31, 35, 45; } FG  
 Types => All; Results => All;

{ Players => All; } FG Types => All; Results => All;

**Kansas**

**North Dakota St.**



<b>Kansas</b>	<b>M/A</b>	<b>%</b>
Field Goals	23/61	38
2 Points	21/44	48
3 Points	2/17	12
Free Throws	21/28	75

<b>North Dakota St.</b>	<b>M/A</b>	<b>%</b>
Field Goals	24/62	39
2 Points	17/42	40
3 Points	7/20	35
Free Throws	17/26	65



**North Dakota St. at Kansas**

12/21/20 Allen Fieldhouse, Lawrence  
2020-21 Women's Basketball

**Game Time:** 1:00 PM  
**Game Duration:** 1:57  
**Attendance:** 456

**Officials:** Tiara Cruse, Greg Small, Nick Marshall

**North Dakota St.**

No	Name	Mins		Score		Points Diff		Points per Min		Assists		Rebounds		Steals		Turnovers	
		On	Off	On	Off	On	Off	On	Off	On	Off	On	Off	On	Off	On	Off
0	Reneya Hopkins	12:13	27:47	18 - 23	54 - 46	-5	8	1.47	1.94	3	10	12	26	2	3	6	5
3	Kadie Deaton	20:50	19:10	50 - 42	22 - 27	8	-5	2.40	1.15	9	4	19	19	4	1	5	6
5	Ryan Cobbins	20:07	19:53	33 - 42	39 - 27	-9	12	1.64	1.96	4	9	16	22	2	3	8	3
11	Heaven Hamling	30:15	09:45	56 - 50	16 - 19	6	-3	1.85	1.64	10	3	28	10	3	2	8	3
12	Marie Olson	25:56	14:04	41 - 40	31 - 29	1	2	1.58	2.20	5	8	28	10	3	2	11	0
22	Michelle Gaislerova	15:42	24:18	20 - 23	52 - 46	-3	6	1.27	2.14	4	9	15	23	1	4	3	8
23	Olivia Skibiel	13:46	26:14	31 - 28	41 - 41	3	0	2.25	1.56	8	5	10	28	1	4	0	11
24	Abby Schulte	21:11	18:49	39 - 28	33 - 41	11	-8	1.84	1.75	9	4	24	14	4	1	3	8
25	Britney Epperson	08:47	31:13	11 - 15	61 - 54	-4	7	1.25	1.95	3	10	8	30	0	5	2	9
34	Emily Dietz	31:13	08:47	61 - 54	11 - 15	7	-4	1.95	1.25	10	3	30	8	5	0	9	2

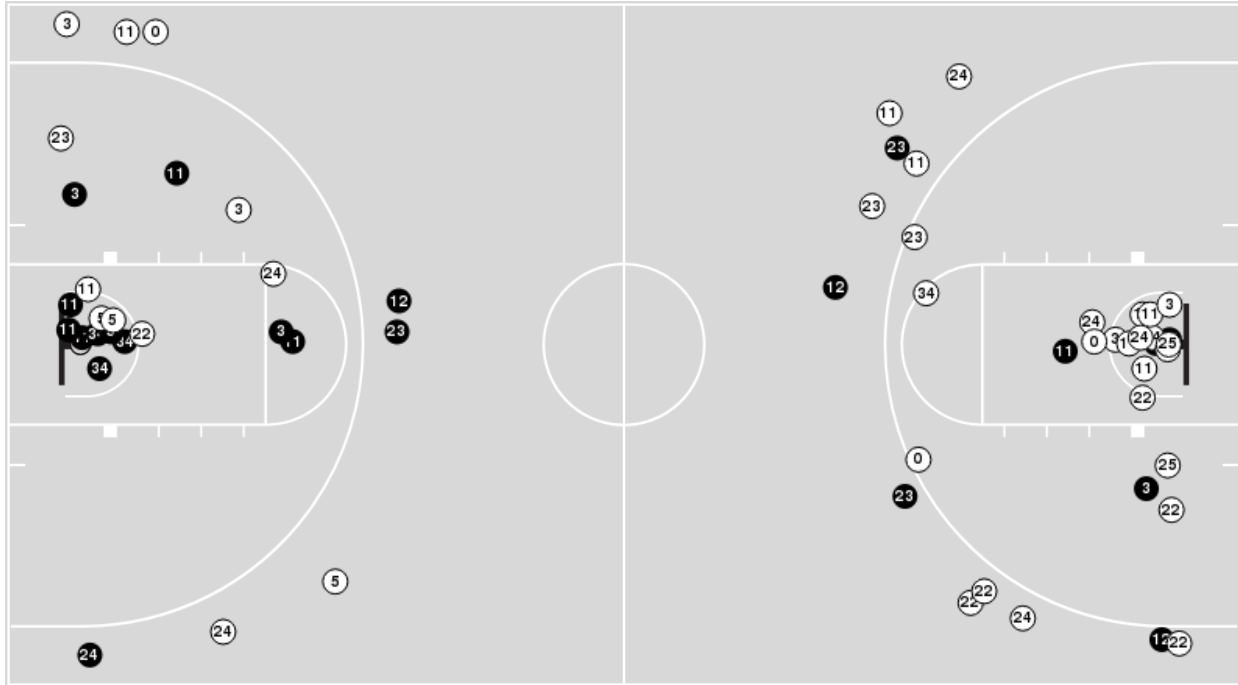
**Kansas**

No	Name	Mins		Score		Points Diff		Points per Min		Assists		Rebounds		Steals		Turnovers	
		On	Off	On	Off	On	Off	On	Off	On	Off	On	Off	On	Off	On	Off
1	Tina Stephens	29:00	11:00	52 - 52	17 - 20	0	-3	1.79	1.55	8	3	29	12	6	0	6	5
5	Aniya Thomas	22:00	18:00	34 - 30	35 - 42	4	-7	1.55	1.94	7	4	25	16	3	3	6	5
10	Emma Merriweather	02:56	37:04	5 - 9	64 - 63	-4	1	1.70	1.73	1	10	2	39	0	6	1	10
11	Ioanna Chatzileonti	28:54	11:06	54 - 50	15 - 22	4	-7	1.87	1.35	8	3	28	13	6	0	8	3
12	Katrine Jessen	01:50	38:10	0 - 3	69 - 69	-3	0	0.00	1.81	0	11	2	39	0	6	2	9
15	Zakiyah Franklin	31:31	08:29	54 - 58	15 - 14	-4	1	1.71	1.77	10	1	35	6	3	3	11	0
20	Julie Brosseau	31:46	08:14	54 - 59	15 - 13	-5	2	1.70	1.82	8	3	32	9	6	0	8	3
21	Brooklyn Mitchell	21:29	18:31	40 - 40	29 - 32	0	-3	1.86	1.57	4	7	20	21	6	0	4	7
25	Chandler Prater	13:15	26:45	25 - 29	44 - 43	-4	1	1.89	1.64	4	7	11	30	0	6	4	7
35	Bailey Helgren	17:19	22:41	27 - 30	42 - 42	-3	0	1.56	1.85	5	6	21	20	0	6	5	6

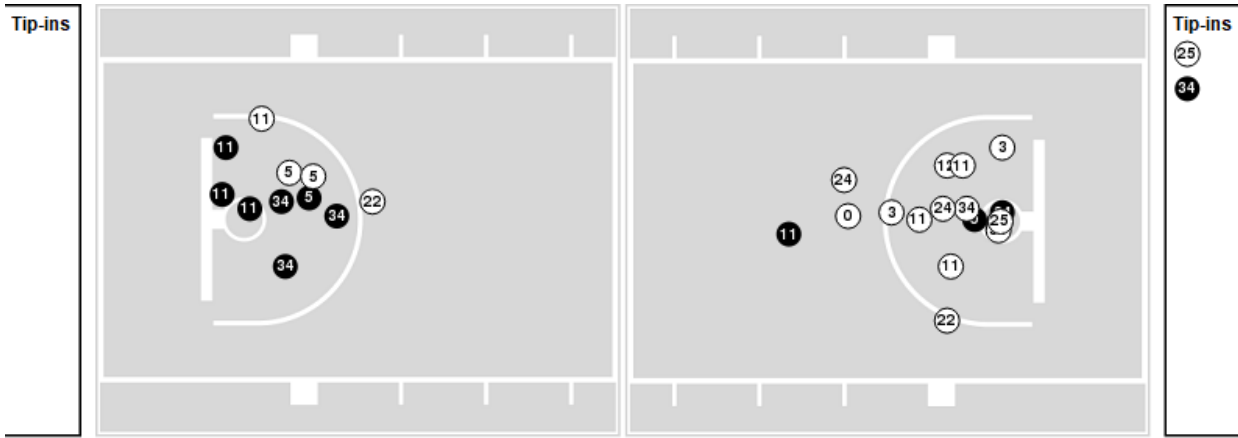


Players => AllFG Types=>AllResults=>All  
**North Dakota St.**

**All Field Goals**



**Blow Up Chart**



**N** Made    **(N)** Missed    N - Player Number

North Dakota St.	M/A	%
Field Goals	24/62	39
2 Points	17/42	40
3 Points	7/20	35
Free Throws	17/26	65

North Dakota St.	M/A	%
Points in the Paint	24 (12 / 29)	41
Fast Break Points	7 (6/9)	67
Second Chance Points	10 (7/12)	58
Effective FG%	44	

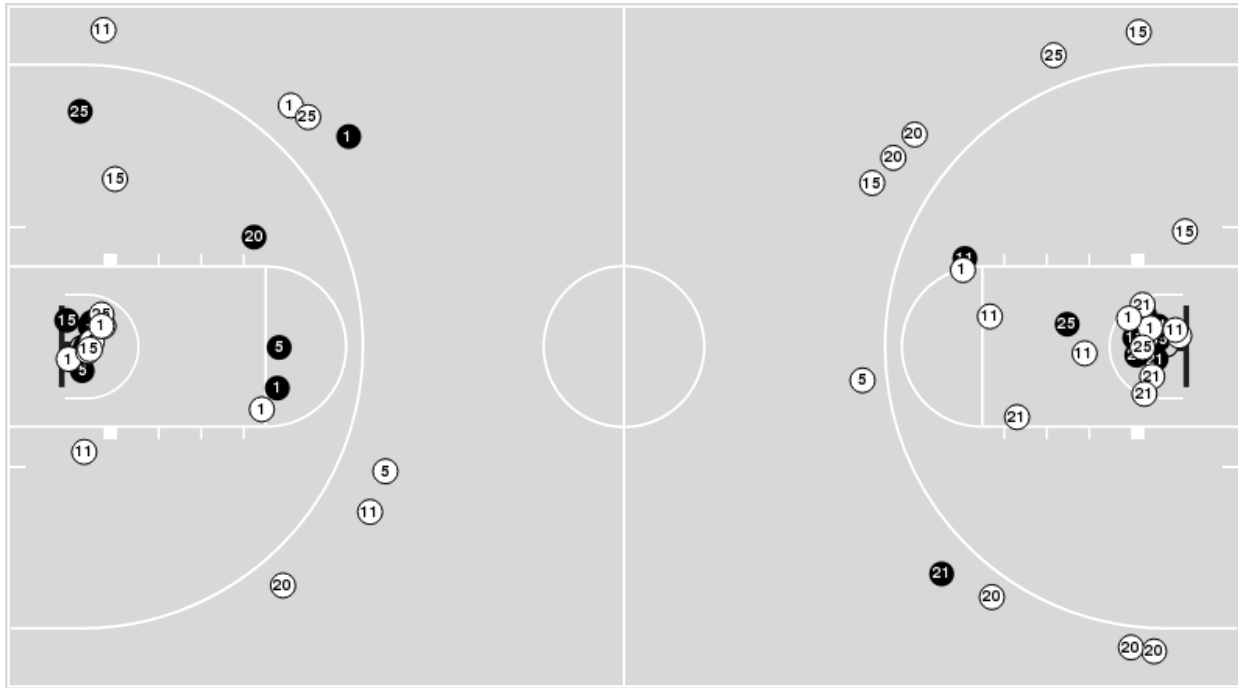


**Officials:** Tiara Cruse, Greg Small, Nick Marshall

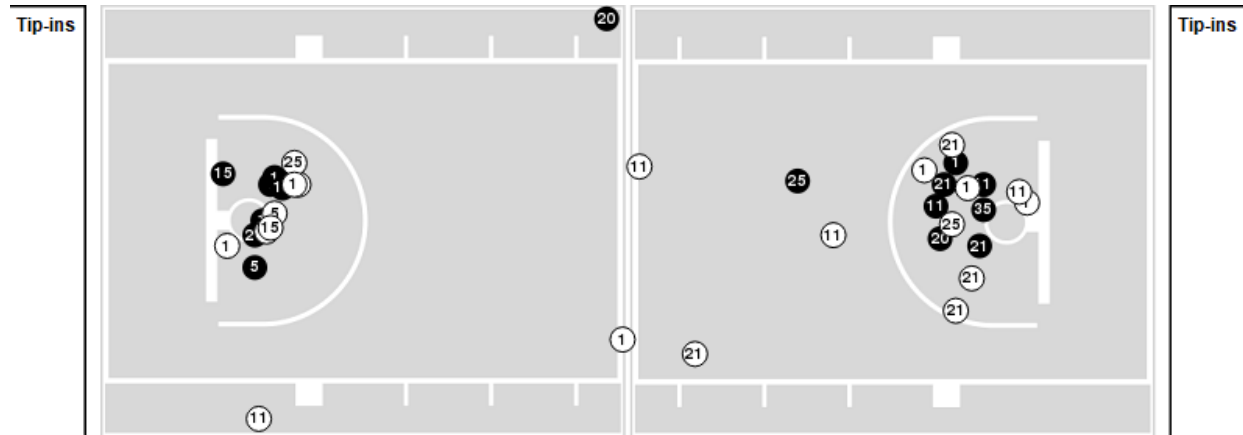
Players => 0, 1, 4, 5, 10, 11, 12, 13, 15, 20, 21, 25, 31, 35, 45FG Types=>AllResults=>All

### Kansas

#### All Field Goals



#### Blow Up Chart



● Made    ○ Missed    N - Player Number

Kansas	M/A	%
Field Goals	23/61	38
2 Points	21/44	48
3 Points	2/17	12
Free Throws	21/28	75

Kansas	M/A	%
Points in the Paint	32 (16 / 35)	46
Fast Break Points	15 (12/12)	100
Second Chance Points	5 (3/7)	43
Effective FG%	39	





**North Dakota St. at Kansas**

12/21/20 Allen Fieldhouse, Lawrence  
2020-21 Women's Basketball

**Game Time:** 1:00 PM  
**Game Duration:** 1:57  
**Attendance:** 456

**Officials:** Tiara Cruse, Greg Small, Nick Marshall

**North Dakota St.**

Lineup	Quarter On	Time On	Quarter Off	Time Off	Time on Court	Score	Score Diff	Reb	Stl	Tov	Ass	PPP
5- Cobbins R/ 11- Hamling H/ 12- Olson M/ 22- Gaislerova M/ 34- Dietz E/	1	10:00	1	07:20	02:40	2-4	-2	2	0	1	0	0.4000
5- Cobbins R/ 11- Hamling H/ 22- Gaislerova M/ 23- Skibiel O/ 34- Dietz E/	1	07:20	1	06:17	01:03	0-4	-4	0	0	0	0	0.0000
11- Hamling H/ 22- Gaislerova M/ 23- Skibiel O/ 24- Schulte A/ 34- Dietz E/	1	06:17	1	05:06	01:11	0-3	-3	1	0	0	0	0.0000
11- Hamling H/ 22- Gaislerova M/ 23- Skibiel O/ 24- Schulte A/ 25- Epperson B/	1	05:06	1	04:20	00:46	0-2	-2	0	0	0	0	0.0000
0- Hopkins R/ 3- Deaton K/ 12- Olson M/ 24- Schulte A/ 25- Epperson B/	1	04:20	1	03:12	01:08	1-0	1	2	0	0	0	0.3472
0- Hopkins R/ 3- Deaton K/ 5- Cobbins R/ 24- Schulte A/ 34- Dietz E/	1	03:12	1	02:54	00:18	0-1	-1	0	1	0	0	0.0000
0- Hopkins R/ 3- Deaton K/ 12- Olson M/ 24- Schulte A/ 34- Dietz E/	1	02:54	1	02:30	00:24	0-0	0	1	0	0	0	0.0000
0- Hopkins R/ 12- Olson M/ 22- Gaislerova M/ 24- Schulte A/ 34- Dietz E/	1	02:30	1	00:39	01:51	2-4	-2	2	0	2	1	0.6667
0- Hopkins R/ 11- Hamling H/ 12- Olson M/ 24- Schulte A/ 34- Dietz E/	1	00:39	1	00:01	00:38	0-0	0	1	0	1	0	0.0000
11- Hamling H/ 12- Olson M/ 22- Gaislerova M/ 24- Schulte A/ 34- Dietz E/	1	00:01	2	07:16	02:45	7-0	7	4	1	0	1	1.4000
11- Hamling H/ 12- Olson M/ 22- Gaislerova M/ 24- Schulte A/ 25- Epperson B/	2	07:16	2	05:43	01:33	0-0	0	3	0	0	0	0.0000
3- Deaton K/ 11- Hamling H/ 12- Olson M/ 24- Schulte A/ 25- Epperson B/	2	05:43	2	05:14	00:29	0-0	0	0	0	0	0	0.0000
3- Deaton K/ 11- Hamling H/ 23- Skibiel O/ 24- Schulte A/ 34- Dietz E/	2	05:14	2	02:56	02:18	8-7	1	1	1	0	2	2.0000
0- Hopkins R/ 3- Deaton K/ 23- Skibiel O/ 24- Schulte A/ 34- Dietz E/	2	02:56	2	01:43	01:13	4-1	3	3	0	0	0	1.0638
0- Hopkins R/ 3- Deaton K/ 12- Olson M/ 24- Schulte A/ 34- Dietz E/	2	01:43	3	10:00	01:43	5-4	1	0	1	0	1	1.7361
5- Cobbins R/ 11- Hamling H/ 12- Olson M/ 22- Gaislerova M/ 34- Dietz E/	3	10:00	3	08:09	01:51	5-2	3	2	0	0	0	1.7361
5- Cobbins R/ 11- Hamling H/ 22- Gaislerova M/ 23- Skibiel O/ 34- Dietz E/	3	08:09	3	06:07	02:02	4-4	0	1	0	0	2	0.8000
3- Deaton K/ 11- Hamling H/ 23- Skibiel O/ 24- Schulte A/ 34- Dietz E/	3	06:07	3	04:41	01:26	5-2	3	1	0	0	1	2.5000
3- Deaton K/ 11- Hamling H/ 23- Skibiel O/ 24- Schulte A/ 25- Epperson B/	3	04:41	3	03:49	00:52	2-1	1	2	0	0	1	1.0000
0- Hopkins R/ 3- Deaton K/ 5- Cobbins R/ 12- Olson M/ 34- Dietz E/	3	03:49	3	02:31	01:18	2-5	-3	0	0	1	0	1.0638
0- Hopkins R/ 3- Deaton K/ 5- Cobbins R/ 12- Olson M/ 25- Epperson B/	3	02:31	3	02:04	00:27	0-4	-4	0	0	0	0	0.0000
3- Deaton K/ 5- Cobbins R/ 11- Hamling H/ 12- Olson M/ 25- Epperson B/	3	02:04	3	01:27	00:37	0-4	-4	0	0	2	0	0.0000
3- Deaton K/ 5- Cobbins R/ 11- Hamling H/ 23- Skibiel O/ 25- Epperson B/	3	01:27	4	08:32	02:55	8-4	4	1	0	0	2	2.0619
3- Deaton K/ 11- Hamling H/ 12- Olson M/ 24- Schulte A/ 34- Dietz E/	4	08:32	4	07:19	01:13	3-3	0	1	0	0	1	1.5000
0- Hopkins R/ 3- Deaton K/ 12- Olson M/ 24- Schulte A/ 34- Dietz E/	4	07:19	4	06:56	00:23	2-0	2	0	0	0	1	2.0000
0- Hopkins R/ 5- Cobbins R/ 12- Olson M/ 24- Schulte A/ 34- Dietz E/	4	06:56	4	05:56	01:00	0-0	0	2	0	0	0	0.0000
0- Hopkins R/ 5- Cobbins R/ 11- Hamling H/ 12- Olson M/ 34- Dietz E/	4	05:56	4	04:06	01:50	2-4	-2	1	0	2	0	0.5155
3- Deaton K/ 5- Cobbins R/ 11- Hamling H/ 12- Olson M/ 34- Dietz E/	4	04:06	4	00:00	04:06	10-6	4	7	1	2	0	1.0504



**North Dakota St. at Kansas**

12/21/20 Allen Fieldhouse, Lawrence  
2020-21 Women's Basketball

**Game Time:** 1:00 PM  
**Game Duration:** 1:57  
**Attendance:** 456

**Officials:** Tiara Cruse, Greg Small, Nick Marshall

**Kansas**

Lineup	Quarter On	Time On	Quarter Off	Time Off	Time on Court	Score	Score Diff	Reb	Stl	Tov	Ass	PPP
1- Stephens T/ 5- Thomas A/ 11- Chatzileonti I/ 15- Franklin Z/ 20- Brosseau J/	1	10:00	1	05:06	04:54	11-2	9	8	0	2	2	1.0536
1- Stephens T/ 5- Thomas A/ 15- Franklin Z/ 21- Mitchell B/ 35- Helgren B/	1	05:06	1	03:56	01:10	2-0	2	2	0	0	0	1.0000
11- Chatzileonti I/ 15- Franklin Z/ 21- Mitchell B/ 25- Prater C/ 35- Helgren B/	1	03:56	1	02:30	01:26	1-1	0	4	0	1	0	0.3472
1- Stephens T/ 5- Thomas A/ 11- Chatzileonti I/ 20- Brosseau J/ 21- Mitchell B/	1	02:30	2	10:00	02:30	4-2	2	0	3	0	0	1.0000
1- Stephens T/ 5- Thomas A/ 11- Chatzileonti I/ 15- Franklin Z/ 20- Brosseau J/	2	10:00	2	07:33	02:27	0-4	-4	2	0	1	0	0.0000
12- Jessen K/ 15- Franklin Z/ 20- Brosseau J/ 21- Mitchell B/ 35- Helgren B/	2	07:33	2	06:35	00:58	0-3	-3	0	0	1	0	0.0000
5- Thomas A/ 12- Jessen K/ 15- Franklin Z/ 20- Brosseau J/ 35- Helgren B/	2	06:35	2	05:43	00:52	0-0	0	2	0	1	0	0.0000
1- Stephens T/ 5- Thomas A/ 15- Franklin Z/ 20- Brosseau J/ 35- Helgren B/	2	05:43	2	05:14	00:29	0-0	0	2	0	0	0	0.0000
1- Stephens T/ 5- Thomas A/ 15- Franklin Z/ 25- Prater C/ 35- Helgren B/	2	05:14	2	02:56	02:18	7-8	-1	1	0	1	2	1.7500
1- Stephens T/ 5- Thomas A/ 10- Merriweather E/ 15- Franklin Z/ 25- Prater C/	2	02:56	2	02:56	00:00	1-0	1	0	0	0	0	1.1364
5- Thomas A/ 10- Merriweather E/ 11- Chatzileonti I/ 15- Franklin Z/ 25- Prater C/	2	02:56	2	02:47	00:09	0-0	0	0	0	0	0	0.0000
10- Merriweather E/ 11- Chatzileonti I/ 15- Franklin Z/ 20- Brosseau J/ 25- Prater C/	2	02:47	3	10:00	02:47	4-9	-5	2	0	1	1	0.8000
1- Stephens T/ 5- Thomas A/ 11- Chatzileonti I/ 15- Franklin Z/ 20- Brosseau J/	3	10:00	3	08:09	01:51	2-5	-3	2	0	0	1	0.6667
1- Stephens T/ 11- Chatzileonti I/ 15- Franklin Z/ 20- Brosseau J/ 21- Mitchell B/	3	08:09	3	07:29	00:40	2-2	0	0	0	0	0	2.0000
1- Stephens T/ 15- Franklin Z/ 20- Brosseau J/ 21- Mitchell B/ 35- Helgren B/	3	07:29	3	06:07	01:22	2-2	0	2	0	0	1	1.0000
1- Stephens T/ 20- Brosseau J/ 21- Mitchell B/ 25- Prater C/ 35- Helgren B/	3	06:07	3	03:49	02:18	3-7	-4	1	0	0	0	0.7979
11- Chatzileonti I/ 20- Brosseau J/ 21- Mitchell B/ 25- Prater C/ 35- Helgren B/	3	03:49	3	02:44	01:05	5-0	5	1	0	0	0	2.6596
1- Stephens T/ 11- Chatzileonti I/ 20- Brosseau J/ 21- Mitchell B/ 25- Prater C/	3	02:44	3	02:44	00:00	0-0	0	0	0	0	0	0.0000
1- Stephens T/ 11- Chatzileonti I/ 15- Franklin Z/ 20- Brosseau J/ 21- Mitchell B/	3	02:44	4	08:32	04:12	12-10	2	1	2	1	2	1.4085
5- Thomas A/ 11- Chatzileonti I/ 20- Brosseau J/ 21- Mitchell B/ 35- Helgren B/	4	08:32	4	07:19	01:13	3-3	0	1	0	0	1	1.5000
1- Stephens T/ 5- Thomas A/ 20- Brosseau J/ 21- Mitchell B/ 35- Helgren B/	4	07:19	4	05:56	01:23	0-2	-2	3	0	0	0	0.0000
1- Stephens T/ 5- Thomas A/ 15- Franklin Z/ 25- Prater C/ 35- Helgren B/	4	05:56	4	05:41	00:15	0-0	0	0	0	0	0	0.0000
5- Thomas A/ 11- Chatzileonti I/ 15- Franklin Z/ 25- Prater C/ 35- Helgren B/	4	05:41	4	03:12	02:29	4-4	0	2	0	1	1	1.3333
1- Stephens T/ 11- Chatzileonti I/ 15- Franklin Z/ 21- Mitchell B/ 25- Prater C/	4	03:12	4	02:45	00:27	0-0	0	0	0	0	0	0.0000
1- Stephens T/ 11- Chatzileonti I/ 15- Franklin Z/ 20- Brosseau J/ 21- Mitchell B/	4	02:45	4	00:11	02:34	6-7	-1	4	1	1	0	0.7426
15- Franklin Z/ 20- Brosseau J/ 21- Mitchell B/ 25- Prater C/ 35- Helgren B/	4	00:11	4	00:10	00:01	0-0	0	0	0	0	0	0.0000
1- Stephens T/ 11- Chatzileonti I/ 15- Franklin Z/ 20- Brosseau J/ 21- Mitchell B/	4	00:10	4	00:00	00:10	0-1	-1	1	0	0	0	0.0000



**North Dakota St. at Kansas**

12/21/20 Allen Fieldhouse, Lawrence  
2020-21 Women's Basketball

**Game Time:** 1:00 PM  
**Game Duration:** 1:57  
**Attendance:** 456

**Officials:** Tiara Cruse, Greg Small, Nick Marshall

**North Dakota St.**

Lineup	Time	Score	Score Diff	Pts/Min	Reb	Stl	Tov	Ass	PPP
5- Cobbins R/ 11- Hamling H/ 12- Olson M/ 22- Gaislerova M/ 34- Dietz E/	04:31	7-6	1	1.5498	4	0	1	0	0.8883
3- Deaton K/ 5- Cobbins R/ 11- Hamling H/ 12- Olson M/ 34- Dietz E/	04:06	10-6	4	2.4390	7	1	2	0	1.0504
3- Deaton K/ 11- Hamling H/ 23- Skibiel O/ 24- Schulte A/ 34- Dietz E/	03:44	13-9	4	3.4821	2	1	0	3	2.1667
5- Cobbins R/ 11- Hamling H/ 22- Gaislerova M/ 23- Skibiel O/ 34- Dietz E/	03:05	4-8	-4	1.2973	1	0	0	2	0.5714
3- Deaton K/ 5- Cobbins R/ 11- Hamling H/ 23- Skibiel O/ 25- Epperson B/	02:55	8-4	4	2.7429	1	0	0	2	2.0619
11- Hamling H/ 12- Olson M/ 22- Gaislerova M/ 24- Schulte A/ 34- Dietz E/	02:45	7-0	7	2.5455	4	1	0	1	1.4000
0- Hopkins R/ 3- Deaton K/ 12- Olson M/ 24- Schulte A/ 34- Dietz E/	02:30	7-4	3	2.8000	1	1	0	2	1.4344
0- Hopkins R/ 12- Olson M/ 22- Gaislerova M/ 24- Schulte A/ 34- Dietz E/	01:51	2-4	-2	1.0811	2	0	2	1	0.6667
0- Hopkins R/ 5- Cobbins R/ 11- Hamling H/ 12- Olson M/ 34- Dietz E/	01:50	2-4	-2	1.0909	1	0	2	0	0.5155
11- Hamling H/ 12- Olson M/ 22- Gaislerova M/ 24- Schulte A/ 25- Epperson B/	01:33	0-0	0	0.0000	3	0	0	0	0.0000
0- Hopkins R/ 3- Deaton K/ 5- Cobbins R/ 12- Olson M/ 34- Dietz E/	01:18	2-5	-3	1.5385	0	0	1	0	1.0638
0- Hopkins R/ 3- Deaton K/ 23- Skibiel O/ 24- Schulte A/ 34- Dietz E/	01:13	4-1	3	3.2877	3	0	0	0	1.0638
3- Deaton K/ 11- Hamling H/ 12- Olson M/ 24- Schulte A/ 34- Dietz E/	01:13	3-3	0	2.4658	1	0	0	1	1.5000
11- Hamling H/ 22- Gaislerova M/ 23- Skibiel O/ 24- Schulte A/ 34- Dietz E/	01:11	0-3	-3	0.0000	1	0	0	0	0.0000
0- Hopkins R/ 3- Deaton K/ 12- Olson M/ 24- Schulte A/ 25- Epperson B/	01:08	1-0	1	0.8824	2	0	0	0	0.3472
0- Hopkins R/ 5- Cobbins R/ 12- Olson M/ 24- Schulte A/ 34- Dietz E/	01:00	0-0	0	0.0000	2	0	0	0	0.0000
3- Deaton K/ 11- Hamling H/ 23- Skibiel O/ 24- Schulte A/ 25- Epperson B/	00:52	2-1	1	2.3077	2	0	0	1	1.0000
11- Hamling H/ 22- Gaislerova M/ 23- Skibiel O/ 24- Schulte A/ 25- Epperson B/	00:46	0-2	-2	0.0000	0	0	0	0	0.0000
0- Hopkins R/ 11- Hamling H/ 12- Olson M/ 24- Schulte A/ 34- Dietz E/	00:38	0-0	0	0.0000	1	0	1	0	0.0000
3- Deaton K/ 5- Cobbins R/ 11- Hamling H/ 12- Olson M/ 25- Epperson B/	00:37	0-4	-4	0.0000	0	0	2	0	0.0000
3- Deaton K/ 11- Hamling H/ 12- Olson M/ 24- Schulte A/ 25- Epperson B/	00:29	0-0	0	0.0000	0	0	0	0	0.0000
0- Hopkins R/ 3- Deaton K/ 5- Cobbins R/ 12- Olson M/ 25- Epperson B/	00:27	0-4	-4	0.0000	0	0	0	0	0.0000
0- Hopkins R/ 3- Deaton K/ 5- Cobbins R/ 24- Schulte A/ 34- Dietz E/	00:18	0-1	-1	0.0000	0	1	0	0	0.0000



**North Dakota St. at Kansas**

12/21/20 Allen Fieldhouse, Lawrence  
2020-21 Women's Basketball

**Game Time:** 1:00 PM  
**Game Duration:** 1:57  
**Attendance:** 456

**Officials:** Tiara Cruse, Greg Small, Nick Marshall

**Kansas**

Lineup	Time	Score	Score Diff	Pts/Min	Reb	Stl	Tov	Ass	PPP
1- Stephens T/ 5- Thomas A/ 11- Chatzileonti I/ 15- Franklin Z/ 20- Brosseau J/	09:12	13-11	2	1.4130	12	0	3	3	0.7050
1- Stephens T/ 11- Chatzileonti I/ 15- Franklin Z/ 20- Brosseau J/ 21- Mitchell B/	07:36	20-20	0	2.6316	6	3	2	2	1.0753
10- Merriweather E/ 11- Chatzileonti I/ 15- Franklin Z/ 20- Brosseau J/ 25- Prater C/	02:47	4-9	-5	1.4371	2	0	1	1	0.8000
1- Stephens T/ 5- Thomas A/ 15- Franklin Z/ 25- Prater C/ 35- Helgren B/	02:33	7-8	-1	2.7451	1	0	1	2	1.4344
1- Stephens T/ 5- Thomas A/ 11- Chatzileonti I/ 20- Brosseau J/ 21- Mitchell B/	02:30	4-2	2	1.6000	0	3	0	0	1.0000
5- Thomas A/ 11- Chatzileonti I/ 15- Franklin Z/ 25- Prater C/ 35- Helgren B/	02:29	4-4	0	1.6107	2	0	1	1	1.3333
1- Stephens T/ 20- Brosseau J/ 21- Mitchell B/ 25- Prater C/ 35- Helgren B/	02:18	3-7	-4	1.3043	1	0	0	0	0.7979
11- Chatzileonti I/ 15- Franklin Z/ 21- Mitchell B/ 25- Prater C/ 35- Helgren B/	01:26	1-1	0	0.6977	4	0	1	0	0.3472
1- Stephens T/ 5- Thomas A/ 20- Brosseau J/ 21- Mitchell B/ 35- Helgren B/	01:23	0-2	-2	0.0000	3	0	0	0	0.0000
1- Stephens T/ 15- Franklin Z/ 20- Brosseau J/ 21- Mitchell B/ 35- Helgren B/	01:22	2-2	0	1.4634	2	0	0	1	1.0000
5- Thomas A/ 11- Chatzileonti I/ 20- Brosseau J/ 21- Mitchell B/ 35- Helgren B/	01:13	3-3	0	2.4658	1	0	0	1	1.5000
1- Stephens T/ 5- Thomas A/ 15- Franklin Z/ 21- Mitchell B/ 35- Helgren B/	01:10	2-0	2	1.7143	2	0	0	0	1.0000
11- Chatzileonti I/ 20- Brosseau J/ 21- Mitchell B/ 25- Prater C/ 35- Helgren B/	01:05	5-0	5	4.6154	1	0	0	0	2.6596
12- Jessen K/ 15- Franklin Z/ 20- Brosseau J/ 21- Mitchell B/ 35- Helgren B/	00:58	0-3	-3	0.0000	0	0	1	0	0.0000
5- Thomas A/ 12- Jessen K/ 15- Franklin Z/ 20- Brosseau J/ 35- Helgren B/	00:52	0-0	0	0.0000	2	0	1	0	0.0000
1- Stephens T/ 5- Thomas A/ 15- Franklin Z/ 20- Brosseau J/ 35- Helgren B/	00:29	0-0	0	0.0000	2	0	0	0	0.0000
1- Stephens T/ 11- Chatzileonti I/ 15- Franklin Z/ 21- Mitchell B/ 25- Prater C/	00:27	0-0	0	0.0000	0	0	0	0	0.0000
5- Thomas A/ 10- Merriweather E/ 11- Chatzileonti I/ 15- Franklin Z/ 25- Prater C/	00:09	0-0	0	0.0000	0	0	0	0	0.0000
15- Franklin Z/ 20- Brosseau J/ 21- Mitchell B/ 25- Prater C/ 35- Helgren B/	00:01	0-0	0	0.0000	0	0	0	0	0.0000
1- Stephens T/ 5- Thomas A/ 10- Merriweather E/ 15- Franklin Z/ 25- Prater C/	00:00	1-0	1	∞	0	0	0	0	1.1364
1- Stephens T/ 11- Chatzileonti I/ 20- Brosseau J/ 21- Mitchell B/ 25- Prater C/	00:00	0-0	0	NaN	0	0	0	0	0.0000