



**Kansas at TCU**

01/05/21 Ed and Rae Schollmaier Arena, Fort Worth  
2020-21 Men's Basketball

Game Time: 9:00 PM  
Game Duration: 1:59  
Attendance: 1,894

Officials: Keith Kimble, Rick Crawford, Ron Groover

**Kansas - 93**

Record: 9-2 (3-1)

NO.	Name	F	Min	FG		3P		FT		Rebounds			Fouls		TP	AS	TO	ST	Blocks		+/-
				M-A	M-A	M-A	OR	DR	TOT	PF	FD	BS	BA								
10	Jalen Wilson	F	35:13	5-10	1-3	5-8	2	6	8	1	4	16	6	1	1	1	0	0	0	0	29
33	David McCormack	F	23:01	7-9	0-0	6-6	3	5	8	1	4	20	1	0	0	2	0	0	0	0	23
2	Christian Braun	G	32:47	4-7	2-4	0-0	0	2	2	3	0	10	3	1	2	0	0	0	0	28	
3	Dajuan Harris	G	27:12	3-5	0-0	1-1	1	1	2	2	2	7	7	1	0	0	0	0	0	26	
30	Ochai Agbaji	G	30:38	7-12	3-6	2-2	0	3	3	0	1	19	3	0	1	1	0	0	0	24	
44	Mitch Lightfoot		16:59	2-6	0-1	0-1	4	1	5	1	1	4	0	2	1	1	0	0	0	6	
1	Tyon Grant-Foster		08:49	2-4	0-2	1-2	0	1	1	1	1	5	0	0	0	0	0	0	0	-1	
13	Tristan Enaruna		16:42	5-8	2-3	0-0	3	4	7	1	0	12	1	3	0	0	0	0	0	-2	
4	Latrell Jossell		02:53	0-1	0-1	0-0	0	0	0	1	0	0	0	0	0	0	0	0	0	4	
12	Chris Teahan		02:53	0-0	0-0	0-0	1	2	3	0	0	0	0	0	0	0	0	0	0	4	
35	Gethro Muscadin		02:53	0-0	0-0	0-0	0	1	1	1	0	0	0	0	0	0	0	0	0	4	
Team										0	1	1			0						
<b>Totals</b>				35-62	8-20	15-20	14	27	41	12	13	93	21	8	5	4	0	0	0	0	29

Shooting By Period		
1st FG%	18-28	64.3%
3PT%	6-10	60.0%
FT%	7-9	77.8%
2nd FG%	17-34	50.0%
3PT%	2-10	20.0%
FT%	8-11	72.7%
GM FG%	35-62	56.5%
3PT%	8-20	40.0%
FT%	15-20	75.0%

Dead Ball Rebounds: 2, 0

Technical Fouls::NONE

**TCU - 64**

Record: 9-3 (2-2)

NO.	Name	F	Min	FG		3P		FT		Rebounds			Fouls		TP	AS	TO	ST	Blocks		+/-
				M-A	M-A	M-A	OR	DR	TOT	PF	FD	BS	BA								
34	Kevin Easley	F	21:49	1-3	1-2	0-0	2	1	3	0	1	3	1	0	0	0	0	0	0	0	-19
21	Kevin Samuel	C	17:58	4-5	0-0	0-0	0	0	0	4	0	8	0	0	0	0	0	1	0	0	-17
1	Mike Miles	G	28:19	0-8	0-3	0-0	0	1	1	1	2	0	1	1	0	0	1	0	0	-23	
4	PJ Fuller	G	23:14	1-4	0-0	3-4	1	0	1	1	2	5	3	0	1	0	1	0	0	-19	
22	RJ Nembhard	G	33:56	6-12	1-3	1-1	0	2	2	1	2	14	6	5	1	0	0	0	0	-30	
5	Charles O'Bannon		15:57	6-9	4-6	2-3	1	5	6	2	2	18	0	2	0	0	0	0	0	-8	
23	Jaedon LeDee		19:48	2-5	0-0	0-0	1	1	2	2	2	4	0	0	0	0	0	1	0	-10	
3	Francisco Farabello		18:53	2-3	1-2	0-0	0	0	0	1	0	5	3	1	0	0	0	0	0	-5	
11	Taryn Todd		11:02	1-4	1-2	0-2	0	1	1	1	1	3	0	1	0	0	0	0	0	-11	
2	Mickey Pearson		04:36	1-1	0-0	0-0	0	0	0	0	0	2	1	0	0	0	0	0	0	1	
0	Eddie Lampkin		02:14	0-1	0-0	0-0	0	1	1	0	0	0	0	0	0	0	0	0	0	-2	
15	Terren Frank		02:14	0-1	0-1	0-0	0	1	1	0	0	0	0	0	0	0	0	0	0	-2	
Team										0	2	2			2						
<b>Totals</b>				25-57	8-19	6-10	5	15	20	13	12	64	15	10	2	0	4	0	0	0	-29

Shooting By Period		
1st FG%	13-29	44.8%
3PT%	3-10	30.0%
FT%	6-10	60%
2nd FG%	12-28	42.9%
3PT%	5-9	55.6%
FT%	0-0	0%
GM FG%	25-57	43.9%
3PT%	8-19	42.1%
FT%	6-10	60.0%

Dead Ball Rebounds: 4, 1

Technical Fouls::NONE

	KU	TCU
Biggest lead	29 (2 <sup>nd</sup> 1:21)	2 (1 <sup>st</sup> 16:45)
Best Scoring Run	9(2 <sup>nd</sup> 1:21)	7(1 <sup>st</sup> 8:14)
Lead Changes	2	
Times Tied	0	
Time with Lead	39:34	00:14

Points from	KU	TCU
Turnovers	13	12
Paint	46	32
Second Chance	10	2
Fast Breaks	14	12
Bench	21	32

	Period by Period Scoring		
	1st	2nd	TOT
KU	49	44	93
TCU	35	29	64



**Officials:** Keith Kimble, Rick Crawford, Ron Groover

**Period 1**

**Quarter Starters:**

<b>TCU</b>	1 Miles M	4 Fuller P	21 Samuel K	22 Nembhard R	34 Easley K
<b>KU</b>	2 Braun C	3 Harris D	10 Wilson J	30 Agbaji O	33 McCormack D

Game Time	TCU	Score	Diff	KU
20:00	21 SAMUEL K jumpball lost			33 MCCORMACK D jumpball won
19:48		<b>0-3</b>	<b>-3</b>	30 AGBAJI O 3pt FG , jump shot made (3)
19:48				3 HARRIS D assist (1)
19:17	1 MILES M 2pt FG outside the paint, step back jump shot missed			
19:14	34 EASLEY K offensive rebound (1)			
18:59	34 EASLEY K 3pt FG second chance, jump shot missed			
18:56				10 WILSON J defensive rebound (1)
18:39				10 WILSON J 2pt FG in the paint, driving layup missed
18:37	defensive rebound (2)			
18:21	34 EASLEY K foul drawn (1)			3 HARRIS D foul personal (1 - 1)
18:05	4 FULLER P 2pt FG in the paint, driving layup made (2)	<b>2-3</b>	<b>-1</b>	
17:47		<b>2-5</b>	<b>-3</b>	33 MCCORMACK D 2pt FG in the paint, hook shot made (2)
17:47				3 HARRIS D assist (2)
17:26	22 NEMBHARD R turnover lost ball (1)			10 WILSON J steal (1)
17:18	4 FULLER P substitution out			
17:18	5 O'BANNON C substitution in			
17:18	34 EASLEY K substitution out			
17:18	4 FULLER P substitution in			
17:09				10 WILSON J 3pt FG from turnover, jump shot missed
17:04	22 NEMBHARD R defensive rebound (1)			
17:02	5 O'BANNON C 2pt FG fast break in the paint, layup made (2)	<b>4-5</b>	<b>-1</b>	
17:02	22 NEMBHARD R assist (1)			
16:52				30 AGBAJI O 3pt FG , jump shot missed
16:49	5 O'BANNON C defensive rebound (1)			
16:45	5 O'BANNON C 3pt FG fast break, jump shot made (5)	<b>7-5</b>	<b>2</b>	
16:45	4 FULLER P assist (1)			
16:31		<b>7-8</b>	<b>-1</b>	2 BRAUN C 3pt FG , jump shot made (3)
16:31				3 HARRIS D assist (3)
15:58	1 MILES M 2pt FG outside the paint, step back jump shot missed			
15:55				3 HARRIS D defensive rebound (1)
15:47		<b>7-10</b>	<b>-3</b>	33 MCCORMACK D 2pt FG in the paint, alleyoop made (4)
15:47				2 BRAUN C assist (1)
15:34	4 FULLER P foul drawn (1)			33 MCCORMACK D foul shooting (1 - 2)
15:34	21 SAMUEL K substitution out			
15:34	23 LEDEE J substitution in			
15:34				33 MCCORMACK D substitution out
15:34				44 LIGHTFOOT M substitution in
15:34	4 FULLER P free throw 1 - 2 missed			
15:34	offensive dead ball rebound (1)			
15:34	4 FULLER P free throw 2 - 2 made (3)	<b>8-10</b>	<b>-2</b>	
15:19		<b>8-12</b>	<b>-4</b>	30 AGBAJI O 2pt FG outside the paint, pull up jump shot made (5)
15:04	22 NEMBHARD R 3pt FG , jump shot missed			



Official Basketball Play by Play - First Half  
**Kansas at TCU**  
 01/05/21 Ed and Rae Schollmaier Arena, Fort Worth  
 2020-21 Men's Basketball

**Game Time:** 9:00 PM  
**Game Duration:** 1:59  
**Attendance:** 1,894

**Officials:** Keith Kimble, Rick Crawford, Ron Groover

Game Time	TCU	Score	Diff	KU
15:01	23 LEDEE J offensive rebound (1)			
15:00	23 LEDEE J 2pt FG second chance in the paint, layup blocked			
15:00				44 LIGHTFOOT M block (1)
14:55				10 WILSON J defensive rebound (2)
14:43		<b>8-15</b>	<b>-7</b>	30 AGBAJI O 3pt FG , jump shot made (8)
14:43				3 HARRIS D assist (4)
14:18	22 NEMBHARD R turnover bad pass (2)			2 BRAUN C steal (1)
14:14		<b>8-17</b>	<b>-9</b>	2 BRAUN C 2pt FG fast break from turnover in the paint, dunk, made (5)
14:13	Timeout 30 Sec			
14:13	22 NEMBHARD R substitution out			
14:13	3 FARABELLO F substitution in			
14:02	1 MILES M foul drawn (1)			44 LIGHTFOOT M foul personal (1 - 3)
14:02	4 FULLER P substitution out			
14:02	11 TODD T substitution in			
13:57	5 O'BANNON C foul drawn (1)			3 HARRIS D foul shooting (2 - 4)
13:55	5 O'BANNON C free throw 1 - 3 made (6)	<b>9-17</b>	<b>-8</b>	
13:55	5 O'BANNON C free throw 2 - 3 missed			
13:55	offensive dead ball rebound (2)			
13:55				3 HARRIS D substitution out
13:55				1 GRANT-FOSTER T substitution in
13:55	5 O'BANNON C free throw 3 - 3 made (7)	<b>10-17</b>	<b>-7</b>	
13:44	5 O'BANNON C foul shooting (1 - 1)			10 WILSON J foul drawn (1)
13:44		<b>10-18</b>	<b>-8</b>	10 WILSON J free throw 1 - 2 made (1)
13:44	1 MILES M substitution out			
13:44	22 NEMBHARD R substitution in			
13:44				10 WILSON J free throw 2 - 2 missed
13:44	5 O'BANNON C defensive rebound (2)			
13:44	5 O'BANNON C foul drawn (2)			2 BRAUN C foul personal (1 - 5)
13:18	22 NEMBHARD R 3pt FG , jump shot made (3)	<b>13-18</b>	<b>-5</b>	
13:18	3 FARABELLO F assist (1)			
12:51				44 LIGHTFOOT M 2pt FG in the paint, hook shot missed
12:46				10 WILSON J offensive rebound (3)
12:46	11 TODD T foul shooting (1 - 2)			10 WILSON J foul drawn (2)
12:46		<b>13-19</b>	<b>-6</b>	10 WILSON J free throw 1 - 2 made (2)
12:46	23 LEDEE J substitution out			
12:46	21 SAMUEL K substitution in			
12:46				2 BRAUN C substitution out
12:46				44 LIGHTFOOT M substitution out
12:46				13 ENARUNA T substitution in
12:46				33 MCCORMACK D substitution in
12:46		<b>13-20</b>	<b>-7</b>	10 WILSON J free throw 2 - 2 made (3)
12:31	22 NEMBHARD R 2pt FG in the paint, driving layup made (5)	<b>15-20</b>	<b>-5</b>	
12:12	5 O'BANNON C foul shooting (2 - 3)			1 GRANT-FOSTER T foul drawn (1)
12:12				1 GRANT-FOSTER T free throw 1 - 2 missed
12:12				offensive dead ball rebound (1)
12:12	5 O'BANNON C substitution out			
12:12	34 EASLEY K substitution in			
12:12		<b>15-21</b>	<b>-6</b>	1 GRANT-FOSTER T free throw 2 - 2 made (1)



**Kansas at TCU**

01/05/21 Ed and Rae Schollmaier Arena, Fort Worth  
2020-21 Men's Basketball

**Game Time:** 9:00 PM  
**Game Duration:** 1:59  
**Attendance:** 1,894

**Officials:** Keith Kimble, Rick Crawford, Ron Groover

Game Time	TCU	Score	Diff	KU
11:49	22 NEMBHARD R 3pt FG , jump shot missed			
11:30	offensive dead ball rebound (3)			
11:30	2pt FG in the paint, wrong basket made	<b>17-21</b>	<b>-4</b>	
11:22		<b>17-23</b>	<b>-6</b>	13 ENARUNA T 2pt FG fast break in the paint, driving layup made (2)
11:03	11 TODD T foul drawn (1)			1 GRANT-FOSTER T foul personal (1 - 6)
11:03	11 TODD T free throw 1 - 2 missed			
11:03	offensive dead ball rebound (4)			
11:03	11 TODD T free throw 2 - 2 missed			
11:03				13 ENARUNA T defensive rebound (1)
11:03				1 GRANT-FOSTER T substitution out
11:03				2 BRAUN C substitution in
10:42		<b>17-26</b>	<b>-9</b>	13 ENARUNA T 3pt FG , jump shot made (5)
10:42				2 BRAUN C assist (2)
10:18	11 TODD T substitution out			
10:18	4 FULLER P substitution in			
10:18	3 FARABELLO F substitution out			
10:18	1 MILES M substitution in			
10:13	22 NEMBHARD R turnover bad pass (3)			
09:46				30 AGBAJI O 3pt FG from turnover, jump shot missed
09:42				33 MCCORMACK D offensive rebound (1)
09:34		<b>17-28</b>	<b>-11</b>	33 MCCORMACK D 2pt FG from turnover second chance outside the paint, hook shot made (6)
09:34				30 AGBAJI O assist (1)
09:16	34 EASLEY K 2pt FG outside the paint, step back jump shot missed			
09:11				2 BRAUN C defensive rebound (1)
09:04	22 NEMBHARD R steal (1)			10 WILSON J turnover lost ball (1)
08:55	22 NEMBHARD R 2pt FG from turnover in the paint, driving layup made (7)	<b>19-28</b>	<b>-9</b>	
08:55	34 EASLEY K assist (1)			
08:55	22 NEMBHARD R foul drawn (1)			10 WILSON J foul shooting (1 - 7)
08:55	22 NEMBHARD R free throw 1 - 1 made (8)	<b>20-28</b>	<b>-8</b>	
08:55				10 WILSON J substitution out
08:55				1 GRANT-FOSTER T substitution in
08:43				2 BRAUN C 3pt FG , jump shot missed
08:39				33 MCCORMACK D offensive rebound (2)
08:38				33 MCCORMACK D 2pt FG second chance outside the paint, jump shot missed
08:36	defensive dead ball rebound (5)			
08:36	4 FULLER P foul drawn (2)			13 ENARUNA T foul personal (1 - 8)
08:36	4 FULLER P 1&1 free throw 1 made (4)	<b>21-28</b>	<b>-7</b>	
08:36	4 FULLER P 1&1 free throw 2 made (5)	<b>22-28</b>	<b>-6</b>	
08:20	4 FULLER P steal (1)			2 BRAUN C turnover lost ball (1)
08:14	21 SAMUEL K 2pt FG fast break from turnover in the paint, alleyoop made (2)	<b>24-28</b>	<b>-4</b>	
08:14	22 NEMBHARD R assist (2)			
08:09				Timeout 60 Sec
08:09				1 GRANT-FOSTER T substitution out
08:09				13 ENARUNA T substitution out
08:09				3 HARRIS D substitution in



Official Basketball Play by Play - First Half  
**Kansas at TCU**  
 01/05/21 Ed and Rae Schollmaier Arena, Fort Worth  
 2020-21 Men's Basketball

**Game Time:** 9:00 PM  
**Game Duration:** 1:59  
**Attendance:** 1,894

**Officials:** Keith Kimble, Rick Crawford, Ron Groover

Game Time	TCU	Score	Diff	KU
08:09				10 WILSON J substitution in
07:58		<b>24-31</b>	<b>-7</b>	10 WILSON J 3pt FG , jump shot made (6)
07:58				30 AGBAJI O assist (2)
07:37	21 SAMUEL K 2pt FG in the paint, layup blocked			
07:37				33 MCCORMACK D block (1)
07:33				30 AGBAJI O defensive rebound (1)
07:25		<b>24-33</b>	<b>-9</b>	3 HARRIS D 2pt FG in the paint, layup made (2)
07:25	22 NEMBHARD R foul shooting (1 - 4)			3 HARRIS D foul drawn (1)
07:25		<b>24-34</b>	<b>-10</b>	3 HARRIS D free throw 1 - 1 made (3)
07:09	21 SAMUEL K 2pt FG in the paint, alleyoop made (4)	<b>26-34</b>	<b>-8</b>	
07:09	22 NEMBHARD R assist (3)			
06:57		<b>26-36</b>	<b>-10</b>	2 BRAUN C 2pt FG in the paint, dunk, made (7)
06:30	1 MILES M 3pt FG , jump shot missed			
06:27				10 WILSON J defensive rebound (4)
06:24		<b>26-38</b>	<b>-12</b>	10 WILSON J 2pt FG fast break in the paint, driving layup made (8)
06:22	Timeout 30 Sec			
06:21	22 NEMBHARD R substitution out			
06:21	3 FARABELLO F substitution in			
06:13	3 FARABELLO F 3pt FG , jump shot missed			
06:10				30 AGBAJI O defensive rebound (2)
05:57				30 AGBAJI O 2pt FG outside the paint, jump shot missed
05:53	34 EASLEY K defensive rebound (2)			
05:37	1 MILES M 3pt FG , jump shot missed			
05:34				30 AGBAJI O defensive rebound (3)
05:21		<b>26-40</b>	<b>-14</b>	33 MCCORMACK D 2pt FG in the paint, layup made (8)
05:21				3 HARRIS D assist (5)
05:00	21 SAMUEL K 2pt FG in the paint, layup made (6)	<b>28-40</b>	<b>-12</b>	
05:00	3 FARABELLO F assist (2)			
04:50	4 FULLER P foul shooting (1 - 5)			30 AGBAJI O foul drawn (1)
04:50		<b>28-41</b>	<b>-13</b>	30 AGBAJI O free throw 1 - 2 made (9)
04:50	1 MILES M substitution out			
04:50	21 SAMUEL K substitution out			
04:50	34 EASLEY K substitution out			
04:50	5 O'BANNON C substitution in			
04:50	22 NEMBHARD R substitution in			
04:50	23 LEDEE J substitution in			
04:50				33 MCCORMACK D substitution out
04:50				44 LIGHTFOOT M substitution in
04:50		<b>28-42</b>	<b>-14</b>	30 AGBAJI O free throw 2 - 2 made (10)
04:50				30 AGBAJI O substitution out
04:50				13 ENARUNA T substitution in
04:31	4 FULLER P 2pt FG outside the paint, jump shot missed			
04:27				13 ENARUNA T defensive rebound (2)
04:14				44 LIGHTFOOT M turnover travel (1)
03:49	22 NEMBHARD R 2pt FG from turnover outside the paint, step back jump shot missed			
03:44				10 WILSON J defensive rebound (5)
03:41				10 WILSON J 2pt FG in the paint, driving layup missed
03:37				3 HARRIS D offensive rebound (2)



Official Basketball Play by Play - First Half  
**Kansas at TCU**  
 01/05/21 Ed and Rae Schollmaier Arena, Fort Worth  
 2020-21 Men's Basketball

**Game Time:** 9:00 PM  
**Game Duration:** 1:59  
**Attendance:** 1,894

**Officials:** Keith Kimble, Rick Crawford, Ron Groover

Game Time	TCU	Score	Diff	KU
03:36				3 HARRIS D 2pt FG second chance in the paint, driving layup missed
03:33	5 O'BANNON C defensive rebound (3)			
03:30	5 O'BANNON C 3pt FG fast break, jump shot made (10)	<b>31-42</b>	<b>-11</b>	
03:30	4 FULLER P assist (2)			
03:11		<b>31-44</b>	<b>-13</b>	13 ENARUNA T 2pt FG in the paint, jump shot made (7)
03:11				10 WILSON J assist (1)
02:42	Timeout media			
02:42	3 FARABELLO F substitution out			
02:42	1 MILES M substitution in			
02:42				3 HARRIS D substitution out
02:42				30 AGBAJI O substitution in
02:34	23 LEDEE J 2pt FG outside the paint, jump shot missed			
02:28	5 O'BANNON C offensive rebound (4)			
02:28	5 O'BANNON C 2pt FG second chance in the paint, layup made (12)	<b>33-44</b>	<b>-11</b>	
02:08		<b>33-46</b>	<b>-13</b>	44 LIGHTFOOT M 2pt FG in the paint, alleyoop made (2)
02:08				13 ENARUNA T assist (1)
01:39	5 O'BANNON C 3pt FG , jump shot missed			
01:35				defensive rebound (16)
01:37	5 O'BANNON C substitution out			
01:37	34 EASLEY K substitution in			
01:18		<b>33-49</b>	<b>-16</b>	13 ENARUNA T 3pt FG , jump shot made (10)
01:18				10 WILSON J assist (2)
00:44	4 FULLER P 2pt FG outside the paint, jump shot blocked			
00:44				30 AGBAJI O block (1)
00:44				2 BRAUN C defensive rebound (2)
00:29				13 ENARUNA T turnover bad pass (1)
00:02	22 NEMBHARD R 2pt FG from turnover in the paint, driving layup made (10)	<b>35-49</b>	<b>-14</b>	
<b>END OF PERIOD</b>				
<b>TCU 35-49 KU</b>				



**Kansas at TCU**

01/05/21 Ed and Rae Schollmaier Arena, Fort Worth  
2020-21 Men's Basketball

Game Time: 9:00 PM  
Game Duration: 1:59  
Attendance: 1,894

Officials: Keith Kimble, Rick Crawford, Ron Groover

**Kansas - 49**

NO.	Name	F	Min	FG			3P			FT			Rebounds			Fouls		TP	AS	TO	ST	Blocks		+/-
				M-A	M-A	M-A	OR	DR	TOT	PF	FD	BS	BA											
10	Jalen Wilson	F	19:14	2-5	1-2	3-4	1	4	5	1	2	8	2	1	1	0	0	18						
33	David McCormack	F	12:22	4-5	0-0	0-0	2	0	2	1	0	8	0	0	0	1	0	10						
2	Christian Braun	G	18:17	3-4	1-2	0-0	0	2	2	1	0	7	2	1	1	0	14							
3	Dajuan Harris	G	11:32	1-2	0-0	1-1	1	1	2	2	1	3	5	0	0	0	17							
30	Ochai Agbaji	G	17:52	3-6	2-4	2-2	0	3	3	0	1	10	2	0	0	1	15							
44	Mitch Lightfoot		07:38	1-2	0-0	0-0	0	0	0	1	0	2	0	1	0	1	4							
1	Tyon Grant-Foster		03:38	0-0	0-0	1-2	0	0	0	1	1	1	0	0	0	0	-6							
13	Tristan Enaruna		09:27	4-4	2-2	0-0	0	2	2	1	0	10	1	1	0	0	-2							
Team							0	1	1			0			0									
<b>Totals</b>				18-28	6-10	7-9	4	13	17	8	5	49	12	4	2	3	0	14						

Shooting By Period		
1st FG%	18-28	64.3%
3PT%	6-10	60.0%
FT%	7-9	77.8%
GM FG%	18-28	64.3%
3PT%	6-10	60.0%
FT%	7-9	77.8%

Dead Ball Rebounds: 1, 0

Technical Fouls::NONE

**TCU - 35**

NO.	Name	F	Min	FG			3P			FT			Rebounds			Fouls		TP	AS	TO	ST	Blocks		+/-
				M-A	M-A	M-A	OR	DR	TOT	PF	FD	BS	BA											
34	Kevin Easley	F	11:41	0-2	0-1	0-0	1	1	2	0	1	0	1	0	0	0	0	-12						
21	Kevin Samuel	C	12:22	3-4	0-0	0-0	0	0	0	0	0	6	0	0	0	0	-10							
1	Mike Miles	G	14:26	0-4	0-2	0-0	0	0	0	0	1	0	0	0	0	0	-13							
4	PJ Fuller	G	16:16	1-3	0-0	3-4	0	0	0	1	2	5	2	0	1	0	-14							
22	RJ Nembhard	G	18:00	4-7	1-3	1-1	0	1	1	1	1	10	3	3	1	0	-14							
5	Charles O'Bannon		08:19	4-5	2-3	2-3	1	3	4	2	2	12	0	0	0	0	-2							
23	Jaedon LeDee		07:38	0-2	0-0	0-0	1	0	1	0	0	0	0	0	0	0	-4							
3	Francisco Farabello		07:34	0-1	0-1	0-0	0	0	0	0	0	0	2	0	0	0	-1							
11	Taryn Todd		03:44	0-0	0-0	0-2	0	0	0	1	1	0	0	0	0	0	0							
Team							0	1	1			2			0									
<b>Totals</b>				13-29	3-10	6-10	3	6	9	5	8	35	8	3	2	0	3	-14						

Shooting By Period		
1st FG%	13-29	44.8%
3PT%	3-10	30.0%
FT%	6-10	60%
GM FG%	13-29	44.8%
3PT%	3-10	30.0%
FT%	6-10	60.0%

Dead Ball Rebounds: 4, 1

Technical Fouls::NONE

	KU	TCU
Biggest lead	16 (1 <sup>st</sup> 1:18)	2 (1 <sup>st</sup> 16:45)
Best Scoring Run	7 (1 <sup>st</sup> 14:14)	7 (1 <sup>st</sup> 8:14)
Lead Changes	2	
Times Tied	0	
Time with Lead	19:34	00:14

Points from	KU	TCU
Turnovers	4	7
Paint	20	20
Second Chance	4	2
Fast Breaks	6	12
Bench	13	12

	Period by Period Scoring		
	1st	2nd	TOT
KU	49	44	93
TCU	35	29	64

**Kansas at TCU**01/05/21 Ed and Rae Schollmaier Arena, Fort Worth  
2020-21 Men's Basketball

Game Time: 9:00 PM

Game Duration: 1:59

Attendance: 1,894

Officials: Keith Kimble, Rick Crawford, Ron Groover

**Period 2****Quarter Starters:**

<b>TCU</b>	1 Miles M	4 Fuller P	21 Samuel K	22 Nembhard R	34 Easley K
<b>KU</b>	2 Braun C	3 Harris D	10 Wilson J	30 Agbaji O	33 McCormack D

Game Time	TCU	Score	Diff	KU
20:00	23 LEDEE J substitution out			
20:00	21 SAMUEL K substitution in			
20:00				13 ENARUNA T substitution out
20:00				44 LIGHTFOOT M substitution out
20:00				3 HARRIS D substitution in
20:00				33 MCCORMACK D substitution in
19:33	1 MILES M 2pt FG in the paint, jump shot blocked			
19:33				33 MCCORMACK D block (2)
19:25	4 FULLER P offensive rebound (1)			
19:24	4 FULLER P 2pt FG second chance in the paint, layup missed			
19:20				33 MCCORMACK D defensive rebound (3)
19:10	21 SAMUEL K foul shooting (1 - 1)			33 MCCORMACK D foul drawn (1)
19:10		<b>35-50</b>	<b>-15</b>	33 MCCORMACK D free throw 1 - 2 made (9)
19:10		<b>35-51</b>	<b>-16</b>	33 MCCORMACK D free throw 2 - 2 made (10)
18:46	21 SAMUEL K 2pt FG in the paint, layup made (8)	<b>37-51</b>	<b>-14</b>	
18:46	4 FULLER P assist (3)			
18:33		<b>37-54</b>	<b>-17</b>	30 AGBAJI O 3pt FG , jump shot made (13)
18:33				2 BRAUN C assist (3)
18:14	22 NEMBHARD R turnover bad pass (4)			30 AGBAJI O steal (1)
18:08				2 BRAUN C 3pt FG from turnover, jump shot missed
18:00				10 WILSON J offensive rebound (6)
17:58	1 MILES M foul shooting (1 - 2)			33 MCCORMACK D foul drawn (2)
17:58		<b>37-55</b>	<b>-18</b>	33 MCCORMACK D free throw 1 - 2 made (11)
17:58		<b>37-56</b>	<b>-19</b>	33 MCCORMACK D free throw 2 - 2 made (12)
17:51	1 MILES M 2pt FG in the paint, driving layup missed			
17:48				10 WILSON J defensive rebound (7)
17:36		<b>37-58</b>	<b>-21</b>	33 MCCORMACK D 2pt FG in the paint, hook shot made (14)
17:36	21 SAMUEL K foul shooting (2 - 3)			33 MCCORMACK D foul drawn (3)
17:36		<b>37-59</b>	<b>-22</b>	33 MCCORMACK D free throw 1 - 1 made (15)
17:23	22 NEMBHARD R 2pt FG in the paint, jump shot made (12)	<b>39-59</b>	<b>-20</b>	
16:48		<b>39-61</b>	<b>-22</b>	30 AGBAJI O 2pt FG in the paint, alleyoop made (15)
16:48				10 WILSON J assist (3)
16:39	1 MILES M foul drawn (2)			2 BRAUN C foul personal (2 - 1)
16:29	34 EASLEY K 3pt FG , jump shot made (3)	<b>42-61</b>	<b>-19</b>	
16:29	22 NEMBHARD R assist (4)			
16:10				3 HARRIS D turnover travel (1)
15:59	22 NEMBHARD R turnover bad pass (5)			
15:59				Timeout media
15:34		<b>42-63</b>	<b>-21</b>	33 MCCORMACK D 2pt FG from turnover in the paint, layup made (17)
15:34				30 AGBAJI O assist (3)
15:32	21 SAMUEL K foul shooting (3 - 4)			33 MCCORMACK D foul drawn (4)
15:32	21 SAMUEL K substitution out			





**Kansas at TCU**

01/05/21 Ed and Rae Schollmaier Arena, Fort Worth  
2020-21 Men's Basketball

**Game Time:** 9:00 PM  
**Game Duration:** 1:59  
**Attendance:** 1,894

**Officials:** Keith Kimble, Rick Crawford, Ron Groover

Game Time	TCU	Score	Diff	KU
15:32	23 LEDEE J substitution in			
15:32		<b>42-64</b>	<b>-22</b>	33 MCCORMACK D free throw 1 - 1 made (18)
15:07	22 NEMBHARD R 2pt FG in the paint, layup missed			
15:03				33 MCCORMACK D defensive rebound (4)
15:02				33 MCCORMACK D 2pt FG in the paint, turnaround jump shot missed
15:00	defensive rebound (11)			
15:00	1 MILES M substitution out			
15:00	4 FULLER P substitution out			
15:00	34 EASLEY K substitution out			
15:00	3 FARABELLO F substitution in			
15:00	5 O'BANNON C substitution in			
15:00	11 TODD T substitution in			
14:46	11 TODD T turnover lost ball (1)			
14:41		<b>42-66</b>	<b>-24</b>	30 AGBAJI O 2pt FG fast break from turnover in the paint, driving layup made (17)
14:41				10 WILSON J assist (4)
14:25	23 LEDEE J 2pt FG in the paint, jump shot missed			
14:21				33 MCCORMACK D defensive rebound (5)
14:17		<b>42-68</b>	<b>-26</b>	30 AGBAJI O 2pt FG fast break in the paint, alleyoop made (19)
14:17				3 HARRIS D assist (6)
14:16	Timeout 30 Sec			
14:16	Timeout media			
14:16	11 TODD T substitution out			
14:16	2 PEARSON M substitution in			
13:58	5 O'BANNON C turnover bad pass (1)			
13:52	3 FARABELLO F foul personal (1 - 5)			3 HARRIS D foul drawn (2)
13:47				30 AGBAJI O 2pt FG from turnover outside the paint, jump shot missed
13:44	5 O'BANNON C defensive rebound (5)			
13:35	23 LEDEE J 2pt FG in the paint, hook shot made (2)	<b>44-68</b>	<b>-24</b>	
13:20		<b>44-70</b>	<b>-26</b>	3 HARRIS D 2pt FG in the paint, layup made (5)
13:20				10 WILSON J assist (5)
13:00	2 PEARSON M 2pt FG outside the paint, jump shot made (2)	<b>46-70</b>	<b>-24</b>	
12:46		<b>46-72</b>	<b>-26</b>	10 WILSON J 2pt FG in the paint, driving layup made (10)
12:27	22 NEMBHARD R 2pt FG in the paint, driving layup made (14)	<b>48-72</b>	<b>-24</b>	
12:27	2 PEARSON M assist (1)			
12:26				30 AGBAJI O substitution out
12:26				33 MCCORMACK D substitution out
12:26				13 ENARUNA T substitution in
12:26				44 LIGHTFOOT M substitution in
12:11		<b>48-74</b>	<b>-26</b>	3 HARRIS D 2pt FG outside the paint, jump shot made (7)
12:03	23 LEDEE J foul drawn (1)			2 BRAUN C foul personal (3 - 2)
11:59	5 O'BANNON C 3pt FG , jump shot made (15)	<b>51-74</b>	<b>-23</b>	
11:59	3 FARABELLO F assist (3)			
11:46	23 LEDEE J foul shooting (1 - 6)			10 WILSON J foul drawn (3)
11:46	Timeout media			
11:46	1 MILES M substitution in			
11:46	22 NEMBHARD R substitution out			
11:46				3 HARRIS D substitution out



## Kansas at TCU

01/05/21 Ed and Rae Schollmaier Arena, Fort Worth  
2020-21 Men's Basketball

Game Time: 9:00 PM

Game Duration: 1:59

Attendance: 1,894

Officials: Keith Kimble, Rick Crawford, Ron Groover

Game Time	TCU	Score	Diff	KU
11:46				30 AGBAJI O substitution in
11:46		51-75	-24	10 WILSON J free throw 1 - 2 made (11)
11:46		51-76	-25	10 WILSON J free throw 2 - 2 made (12)
11:19	1 MILES M 3pt FG , jump shot missed			
11:14				13 ENARUNA T defensive rebound (3)
11:05				44 LIGHTFOOT M turnover bad pass (2)
10:37	5 O'BANNON C 2pt FG from turnover outside the paint, jump shot missed			
10:29				10 WILSON J defensive rebound (8)
10:27				30 AGBAJI O 3pt FG , jump shot missed
10:20	5 O'BANNON C defensive rebound (6)			
10:19	5 O'BANNON C turnover lost ball (2)			
10:19	5 O'BANNON C substitution out			
10:19	34 EASLEY K substitution in			
10:19				2 BRAUN C substitution out
10:19				3 HARRIS D substitution in
10:13				13 ENARUNA T 2pt FG from turnover in the paint, layup missed
10:10				44 LIGHTFOOT M offensive rebound (1)
10:06				10 WILSON J 3pt FG from turnover second chance, jump shot missed
10:01				13 ENARUNA T offensive rebound (4)
09:55				13 ENARUNA T turnover travel (2)
09:40	2 PEARSON M substitution out			
09:40	4 FULLER P substitution in			
09:33	3 FARABELLO F 3pt FG from turnover, jump shot made (3)	54-76	-22	
09:33	1 MILES M assist (1)			
09:08				13 ENARUNA T turnover travel (3)
08:46	23 LEDEE J 2pt FG from turnover in the paint, layup made (4)	56-76	-20	
08:25		56-78	-22	13 ENARUNA T 2pt FG outside the paint, step back jump shot made (12)
08:25				10 WILSON J assist (6)
08:00	3 FARABELLO F turnover bad pass (1)			44 LIGHTFOOT M steal (1)
07:45				13 ENARUNA T 3pt FG from turnover, jump shot missed
07:40				44 LIGHTFOOT M offensive rebound (2)
07:42	Timeout media			
07:42	4 FULLER P substitution out			
07:42	23 LEDEE J substitution out			
07:42	21 SAMUEL K substitution in			
07:42	22 NEMBHARD R substitution in			
07:42				10 WILSON J substitution out
07:42				2 BRAUN C substitution in
07:29				2 BRAUN C 2pt FG from turnover second chance in the paint, layup missed
07:24				44 LIGHTFOOT M offensive rebound (3)
07:24		56-80	-24	44 LIGHTFOOT M 2pt FG from turnover second chance in the paint, layup made (4)
07:04	3 FARABELLO F 2pt FG in the paint, driving layup made (5)	58-80	-22	
06:50				44 LIGHTFOOT M 3pt FG , jump shot missed
06:46				13 ENARUNA T offensive rebound (5)
06:36				44 LIGHTFOOT M 2pt FG second chance in the paint, layup missed



**Kansas at TCU**

01/05/21 Ed and Rae Schollmaier Arena, Fort Worth  
2020-21 Men's Basketball

**Game Time:** 9:00 PM  
**Game Duration:** 1:59  
**Attendance:** 1,894

**Officials:** Keith Kimble, Rick Crawford, Ron Groover

Game Time	TCU	Score	Diff	KU
06:34				44 LIGHTFOOT M offensive rebound (4)
06:34	21 SAMUEL K foul shooting (4 - 7)			44 LIGHTFOOT M foul drawn (1)
06:34	3 FARABELLO F substitution out			
06:34	21 SAMUEL K substitution out			
06:34	11 TODD T substitution in			
06:34	23 LEDEE J substitution in			
06:34				30 AGBAJI O substitution out
06:34				10 WILSON J substitution in
06:34				44 LIGHTFOOT M free throw 1 - 1 missed
06:34				13 ENARUNA T offensive rebound (6)
06:20				13 ENARUNA T 2pt FG second chance in the paint, layup missed
06:15	23 LEDEE J defensive rebound (2)			
06:14	22 NEMBHARD R 2pt FG outside the paint, jump shot missed			
06:09				13 ENARUNA T defensive rebound (7)
06:06				3 HARRIS D 2pt FG in the paint, jump shot missed
06:03	1 MILES M defensive rebound (1)			
06:02	1 MILES M turnover lost ball (1)			2 BRAUN C steal (2)
05:58	23 LEDEE J foul shooting (2 - 8)			10 WILSON J foul drawn (4)
05:58				10 WILSON J free throw fast break 1 - 2 missed
05:58				offensive dead ball rebound (2)
05:58				44 LIGHTFOOT M substitution out
05:58				33 MCCORMACK D substitution in
05:58				10 WILSON J free throw fast break 2 - 2 missed
05:58	22 NEMBHARD R defensive rebound (2)			
05:43	1 MILES M 2pt FG in the paint, driving layup missed			
05:40	34 EASLEY K offensive rebound (3)			
05:24	11 TODD T 2pt FG second chance in the paint, layup missed			
05:21				33 MCCORMACK D defensive rebound (6)
05:20		<b>58-82</b>	<b>-24</b>	10 WILSON J 2pt FG fast break in the paint, driving layup made (14)
05:20				3 HARRIS D assist (7)
05:11	34 EASLEY K substitution out			
05:11	5 O'BANNON C substitution in			
05:11				13 ENARUNA T substitution out
05:11				1 GRANT-FOSTER T substitution in
04:43	11 TODD T 3pt FG , jump shot made (3)	<b>61-82</b>	<b>-21</b>	
04:43	22 NEMBHARD R assist (5)			
04:23				10 WILSON J 2pt FG in the paint, driving layup missed
04:17				33 MCCORMACK D offensive rebound (7)
04:17		<b>61-84</b>	<b>-23</b>	33 MCCORMACK D 2pt FG second chance in the paint, dunk, made (20)
04:07	5 O'BANNON C 3pt FG , jump shot made (18)	<b>64-84</b>	<b>-20</b>	
04:07	22 NEMBHARD R assist (6)			
03:34		<b>64-87</b>	<b>-23</b>	2 BRAUN C 3pt FG , jump shot made (10)
03:07	22 NEMBHARD R 2pt FG in the paint, jump shot missed			
03:04				33 MCCORMACK D defensive rebound (8)
03:01		<b>64-89</b>	<b>-25</b>	10 WILSON J 2pt FG fast break in the paint, driving layup made (16)
03:01				33 MCCORMACK D assist (1)



**Kansas at TCU**

01/05/21 Ed and Rae Schollmaier Arena, Fort Worth  
2020-21 Men's Basketball

**Game Time:** 9:00 PM  
**Game Duration:** 1:59  
**Attendance:** 1,894

**Officials:** Keith Kimble, Rick Crawford, Ron Groover

Game Time	TCU	Score	Diff	KU
02:53	Timeout 60 Sec			
02:53	Timeout media			
02:53	1 MILES M substitution out			
02:53	3 FARABELLO F substitution in			
02:53				2 BRAUN C substitution out
02:53				3 HARRIS D substitution out
02:53				10 WILSON J substitution out
02:53				33 MCCORMACK D substitution out
02:53				4 JOSSELL L substitution in
02:53				12 TEAHAN C substitution in
02:53				35 MUSCADIN G substitution in
02:53				44 LIGHTFOOT M substitution in
02:45	5 O'BANNON C 3pt FG , jump shot missed			
02:41				12 TEAHAN C defensive rebound (1)
02:33		<b>64-91</b>	<b>-27</b>	1 GRANT-FOSTER T 2pt FG in the paint, driving layup made (3)
02:14	23 LEDEE J foul drawn (2)			35 MUSCADIN G foul personal (1 - 3)
02:14	5 O'BANNON C substitution out			
02:14	23 LEDEE J substitution out			
02:14	0 LAMPKIN E substitution in			
02:14	15 FRANK T substitution in			
02:11	22 NEMBHARD R foul drawn (2)			4 JOSSELL L foul personal (1 - 4)
01:59	11 TODD T 3pt FG , jump shot missed			
01:54				12 TEAHAN C defensive rebound (2)
01:40				1 GRANT-FOSTER T 3pt FG , jump shot missed
01:35	15 FRANK T defensive rebound (1)			
01:31	15 FRANK T 3pt FG , jump shot missed			
01:28				1 GRANT-FOSTER T defensive rebound (1)
01:21		<b>64-93</b>	<b>-29</b>	1 GRANT-FOSTER T 2pt FG in the paint, driving layup made (5)
01:05	0 LAMPKIN E 2pt FG outside the paint, jump shot missed			
01:02				44 LIGHTFOOT M defensive rebound (5)
00:54				44 LIGHTFOOT M 2pt FG in the paint, layup missed
00:50	11 TODD T defensive rebound (1)			
00:39	11 TODD T 2pt FG in the paint, layup missed			
00:35				35 MUSCADIN G defensive rebound (1)
00:29				1 GRANT-FOSTER T 3pt FG , jump shot missed
00:26				12 TEAHAN C offensive rebound (3)
00:14				4 JOSSELL L 3pt FG second chance, jump shot missed
00:10	0 LAMPKIN E defensive rebound (1)			
<b>END OF GAME</b>				
<b>TCU 64-93 KU</b>				



**Kansas at TCU**

01/05/21 Ed and Rae Schollmaier Arena, Fort Worth  
2020-21 Men's Basketball

Game Time: 9:00 PM  
Game Duration: 1:59  
Attendance: 1,894

Officials: Keith Kimble, Rick Crawford, Ron Groover

**Kansas - 44**

NO.	Name	F	Min	FG			3P			FT			Rebounds			Fouls		TP	AS	TO	ST	Blocks		+/-
				M-A	M-A	M-A	OR	DR	TOT	PF	FD	BS	BA											
10	Jalen Wilson	F	15:59	3-5	0-1	2-4	1	2	3	0	2	8	4	0	0	0	0	0	0	0	0	0	11	
33	David McCormack	F	10:39	3-4	0-0	6-6	1	5	6	0	4	12	1	0	0	1	0	0	0	1	0	13		
2	Christian Braun	G	14:30	1-3	1-2	0-0	0	0	0	2	0	3	1	0	1	0	0	1	0	0	0	14		
3	Dajuan Harris	G	15:40	2-3	0-0	0-0	0	0	0	0	1	4	2	1	0	0	0	0	0	0	0	9		
30	Ochai Agbaji	G	12:46	4-6	1-2	0-0	0	0	0	0	0	9	1	0	1	0	0	0	0	0	0	9		
13	Tristan Enaruna		07:15	1-4	0-1	0-0	3	2	5	0	0	2	0	2	0	0	0	0	0	0	0	0		
44	Mitch Lightfoot		09:21	1-4	0-1	0-1	4	1	5	0	1	2	0	1	1	1	0	0	0	0	0	2		
1	Tyon Grant-Foster		05:11	2-4	0-2	0-0	0	1	1	0	0	4	0	0	0	0	0	0	0	0	0	5		
4	Latrell Jossell		02:53	0-1	0-1	0-0	0	0	0	1	0	0	0	0	0	0	0	0	0	0	0	4		
12	Chris Teahan		02:53	0-0	0-0	0-0	1	2	3	0	0	0	0	0	0	0	0	0	0	0	0	4		
35	Gethro Muscadin		02:53	0-0	0-0	0-0	0	1	1	1	0	0	0	0	0	0	0	0	0	0	0	4		
Team							0	0	0			0				0								
<b>Totals</b>				17-34	2-10	8-11	10	14	24	4	8	44	9	4	3	1	0	15						

Shooting By Period		
2nd FG%	17-34	50.0%
3PT%	2-10	20.0%
FT%	8-11	72.7%
GM FG%	17-34	50.0%
3PT%	2-10	20.0%
FT%	8-11	72.7%

Dead Ball Rebounds: 1, 0

Technical Fouls::NONE

**TCU - 29**

NO.	Name	F	Min	FG			3P			FT			Rebounds			Fouls		TP	AS	TO	ST	Blocks		+/-
				M-A	M-A	M-A	OR	DR	TOT	PF	FD	BS	BA											
34	Kevin Easley	F	10:08	1-1	1-1	0-0	1	0	1	0	0	3	0	0	0	0	0	0	0	0	0	0	-7	
21	Kevin Samuel	C	05:36	1-1	0-0	0-0	0	0	0	4	0	2	0	0	0	0	0	0	0	0	0	0	-7	
1	Mike Miles	G	13:53	0-4	0-1	0-0	0	1	1	1	1	0	1	1	0	1	1	0	0	0	1	-10		
4	PJ Fuller	G	06:58	0-1	0-0	0-0	1	0	1	0	0	0	1	0	0	0	0	0	0	0	0	-5		
22	RJ Nembhard	G	15:56	2-5	0-0	0-0	0	1	1	0	1	4	3	2	0	0	0	0	0	0	0	-16		
23	Jaedon LeDee		12:10	2-3	0-0	0-0	0	1	1	2	2	4	0	0	0	0	0	0	0	0	0	-6		
3	Francisco Farabello		11:19	2-2	1-1	0-0	0	0	0	1	0	5	1	1	0	0	0	0	0	0	0	-4		
5	Charles O'Bannon		07:38	2-4	2-3	0-0	0	2	2	0	0	6	0	2	0	0	0	0	0	0	0	-6		
11	Taryn Todd		07:18	1-4	1-2	0-0	0	1	1	0	0	3	0	1	0	0	0	0	0	0	0	-11		
2	Mickey Pearson		04:36	1-1	0-0	0-0	0	0	0	0	0	2	1	0	0	0	0	0	0	0	0	1		
0	Eddie Lampkin		02:14	0-1	0-0	0-0	0	1	1	0	0	0	0	0	0	0	0	0	0	0	0	-2		
15	Terren Frank		02:14	0-1	0-1	0-0	0	1	1	0	0	0	0	0	0	0	0	0	0	0	0	-2		
Team							0	1	1			0				0								
<b>Totals</b>				12-28	5-9	0-0	2	9	11	8	4	29	7	7	0	0	1	-15						

Shooting By Period		
2nd FG%	12-28	42.9%
3PT%	5-9	55.6%
FT%	0-0	0%
GM FG%	12-28	42.9%
3PT%	5-9	55.6%
FT%	0-0	0.0%

Dead Ball Rebounds: 0, 0

Technical Fouls::NONE

	KU	TCU
Biggest lead	29 (2 <sup>nd</sup> 1:21)	0 (1 <sup>st</sup> 20:00)
Best Scoring Run	9(2 <sup>nd</sup> 1:21)	5(2 <sup>nd</sup> 8:46)
Lead Changes	0	
Times Tied	0	
Time with Lead	19:33	00:00

Points from	KU	TCU
Turnovers	9	5
Paint	26	12
Second Chance	6	0
Fast Breaks	8	0
Bench	8	20

	Period by Period Scoring		
	1st	2nd	TOT
KU	49	44	93
TCU	35	29	64



**Kansas at TCU**

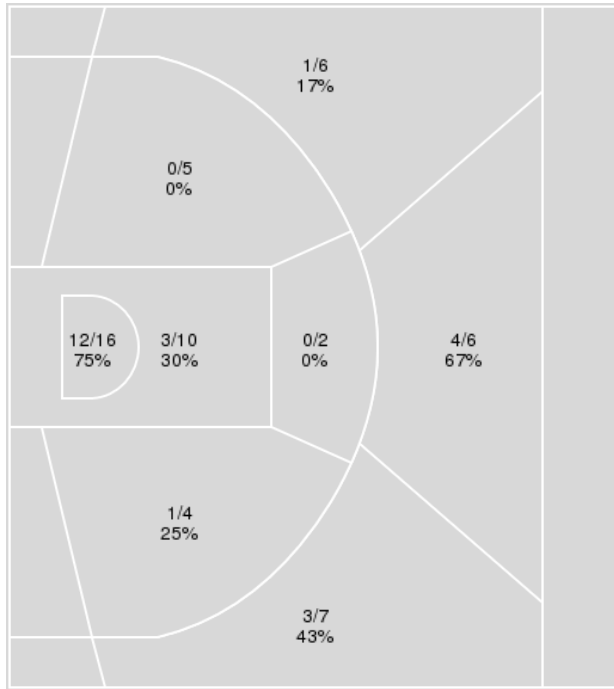
01/05/21 Ed and Rae Schollmaier Arena, Fort Worth  
2020-21 Men's Basketball

**Game Time:** 9:00 PM  
**Game Duration:** 1:59  
**Attendance:** 1,894

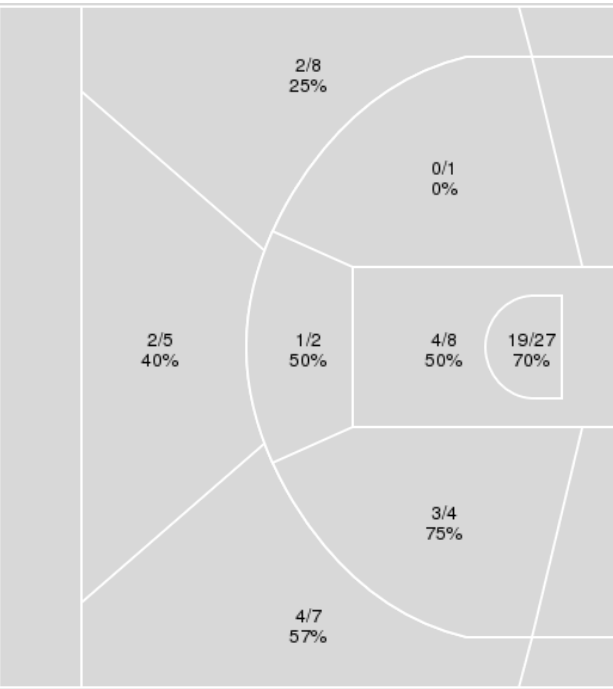
**Officials:** Keith Kimble, Rick Crawford, Ron Groover

{ Players => 0, 1, 2, 3, 4, 5, 10, 11, 13, 15, 21, 22, 23, 30, 31, 34; } FG { Players => All; } FG Types => All; Results => All;  
Types => All; Results => All;

**TCU**



**Kansas**



TCU	M/A	%
Field Goals	24/56	43
2 Points	16/37	43
3 Points	8/19	42
Free Throws	6/10	60

Kansas	M/A	%
Field Goals	35/62	56
2 Points	27/42	64
3 Points	8/20	40
Free Throws	15/20	75



**Kansas at TCU**

01/05/21 Ed and Rae Schollmaier Arena, Fort Worth  
2020-21 Men's Basketball

Game Time: 9:00 PM  
Game Duration: 1:59  
Attendance: 1,894

Officials: Keith Kimble, Rick Crawford, Ron Groover

**Kansas**

No	Name	Mins		Score		Points Diff		Points per Min		Assists		Rebounds		Steals		Turnovers	
		On	Off	On	Off	On	Off	On	Off	On	Off	On	Off	On	Off	On	Off
1	Tyon Grant-Foster	08:49	31:11	17 - 18	76 - 46	-1	30	1.93	2.44	1	20	11	30	0	5	1	7
2	Christian Braun	32:47	07:13	83 - 55	10 - 9	28	1	2.53	1.39	20	1	31	10	4	1	6	2
3	Dajuan Harris	27:12	12:48	71 - 45	22 - 19	26	3	2.61	1.72	17	4	26	15	5	0	4	4
4	Latrell Jossell	02:53	37:07	4 - 0	89 - 64	4	25	1.39	2.40	0	21	6	35	0	5	0	8
10	Jalen Wilson	35:13	04:47	87 - 58	6 - 6	29	0	2.47	1.25	21	0	31	10	5	0	7	1
12	Chris Teahan	02:53	37:07	4 - 0	89 - 64	4	25	1.39	2.40	0	21	6	35	0	5	0	8
13	Tristan Enaruna	16:42	23:18	26 - 28	67 - 36	-2	31	1.56	2.88	7	14	20	21	2	3	7	1
30	Ochai Agbaji	30:38	09:22	76 - 52	17 - 12	24	5	2.48	1.81	18	3	27	14	4	1	7	1
33	David McCormack	23:01	16:59	64 - 41	29 - 23	23	6	2.78	1.71	16	5	18	23	2	3	3	5
35	Gethro Muscadin	02:53	37:07	4 - 0	89 - 64	4	25	1.39	2.40	0	21	6	35	0	5	0	8
44	Mitch Lightfoot	16:59	23:01	29 - 23	64 - 41	6	23	1.71	2.78	5	16	23	18	3	2	5	3

**TCU**

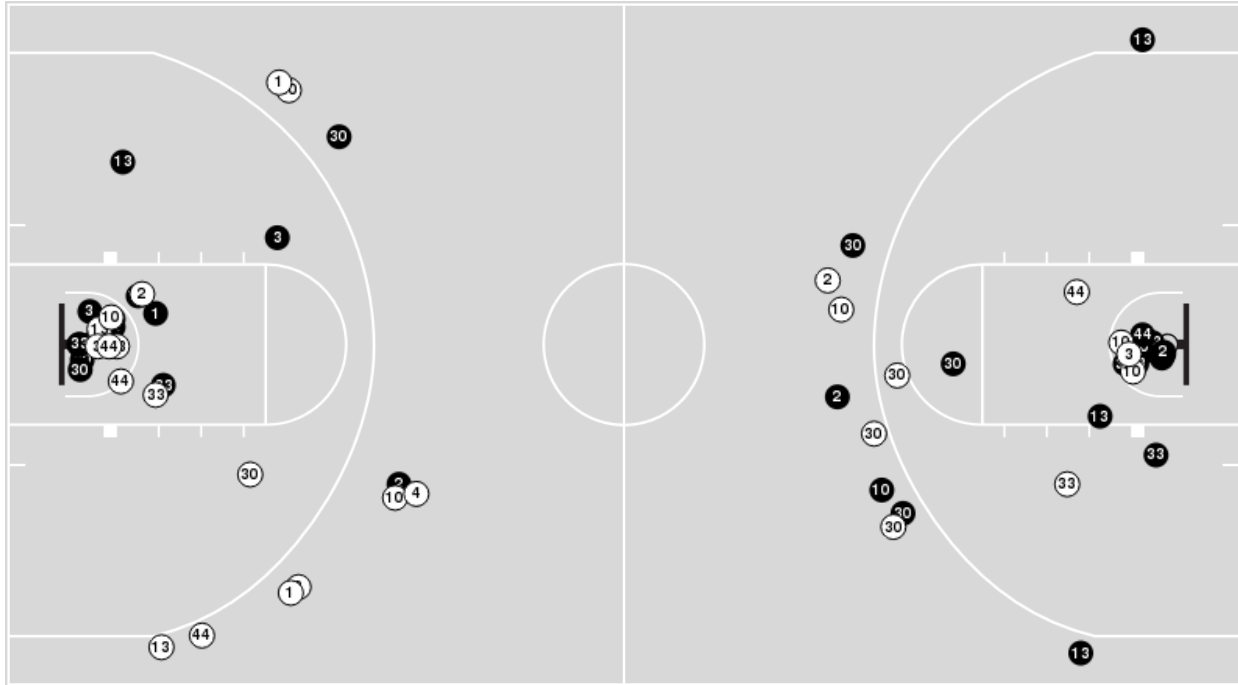
No	Name	Mins		Score		Points Diff		Points per Min		Assists		Rebounds		Steals		Turnovers	
		On	Off	On	Off	On	Off	On	Off	On	Off	On	Off	On	Off	On	Off
0	Eddie Lampkin	02:14	37:46	0 - 2	64 - 91	-2	-27	0.00	1.69	0	15	3	17	0	2	0	10
1	Mike Miles	28:19	11:41	45 - 68	19 - 25	-23	-6	1.59	1.63	11	4	14	6	2	0	8	2
2	Mickey Pearson	04:36	35:24	9 - 8	55 - 85	1	-30	1.96	1.55	2	13	2	18	0	2	2	8
3	Francisco Farabello	18:53	21:07	30 - 35	34 - 58	-5	-24	1.59	1.61	6	9	8	12	0	2	4	6
4	PJ Fuller	23:14	16:46	38 - 57	26 - 36	-19	-10	1.64	1.55	10	5	10	10	2	0	6	4
5	Charles O'Bannon	15:57	24:03	33 - 41	31 - 52	-8	-21	2.07	1.29	8	7	8	12	0	2	4	6
11	Taryn Todd	11:02	28:58	15 - 26	49 - 67	-11	-18	1.36	1.69	3	12	8	12	0	2	2	8
15	Terren Frank	02:14	37:46	0 - 2	64 - 91	-2	-27	0.00	1.69	0	15	3	17	0	2	0	10
21	Kevin Samuel	17:58	22:02	31 - 48	33 - 45	-17	-12	1.73	1.50	8	7	6	14	2	0	4	6
22	RJ Nembhard	33:56	06:04	55 - 85	9 - 8	-30	1	1.62	1.48	13	2	18	2	2	0	8	2
23	Jaedon LeDee	19:48	20:12	33 - 43	31 - 50	-10	-19	1.67	1.53	7	8	11	9	0	2	6	4
34	Kevin Easley	21:49	18:11	31 - 50	33 - 43	-19	-10	1.42	1.81	7	8	9	11	2	0	6	4



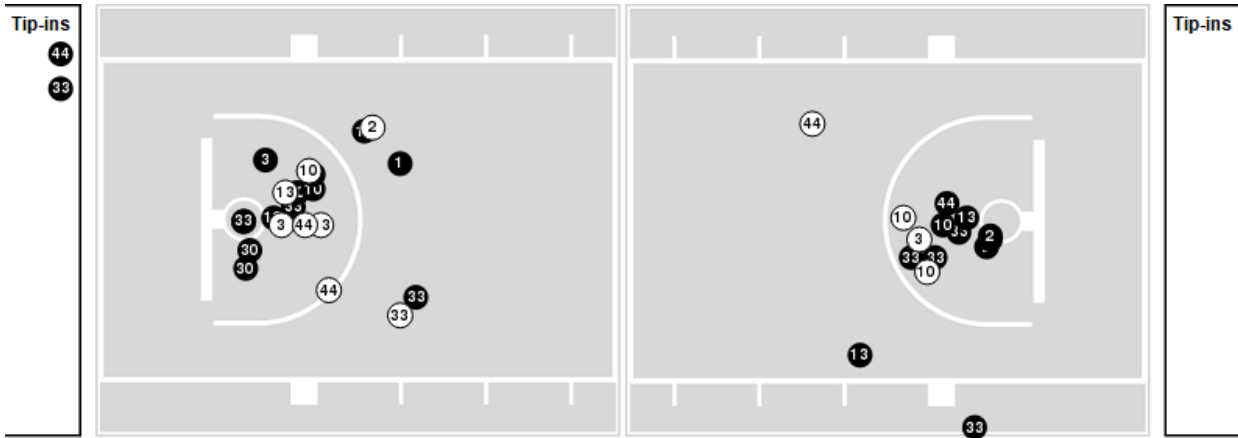
Players => AllFG Types=>AllResults=>All

**Kansas**

**All Field Goals**



**Blow Up Chart**



● Made    ○ Missed    N - Player Number

Kansas	M/A	%
Field Goals	35/62	56
2 Points	27/42	64
3 Points	8/20	40
Free Throws	15/20	75

Kansas	M/A	%
Points in the Paint	46 (23 / 35)	66
Fast Break Points	14 (7/9)	78
Second Chance Points	10 (7/15)	47
Effective FG%	63	





**Kansas at TCU**

01/05/21 Ed and Rae Schollmaier Arena, Fort Worth  
2020-21 Men's Basketball

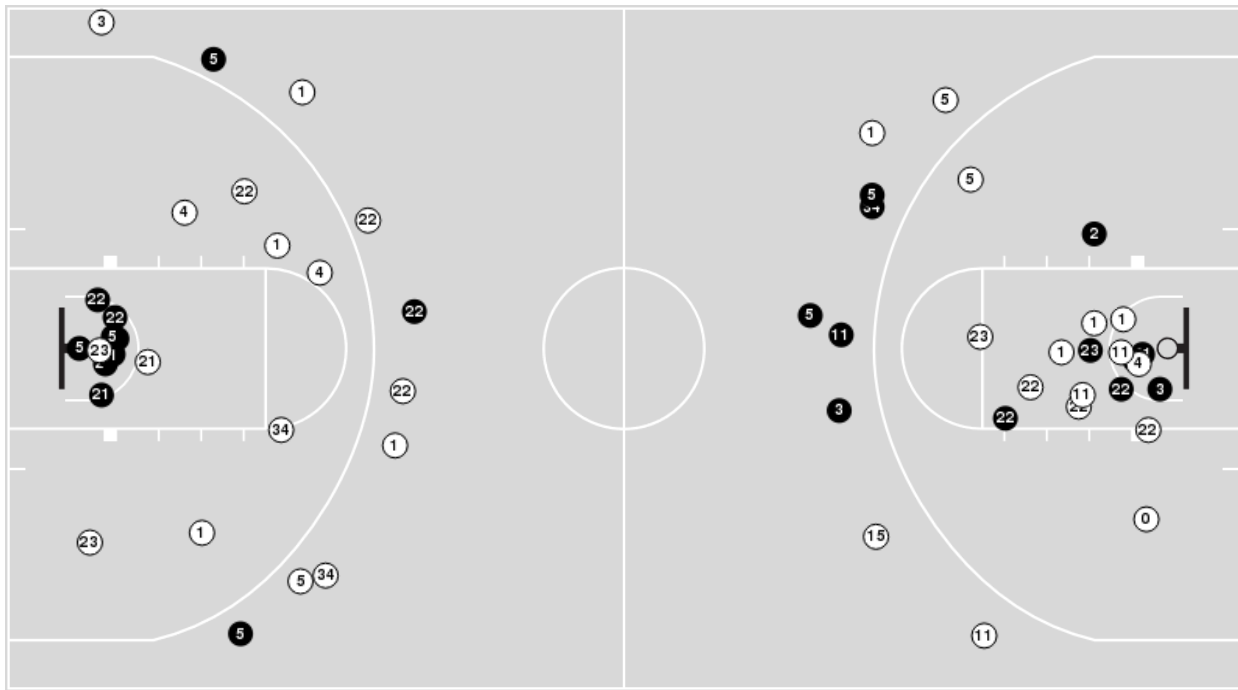
Game Time: 9:00 PM  
Game Duration: 1:59  
Attendance: 1,894

Officials: Keith Kimble, Rick Crawford, Ron Groover

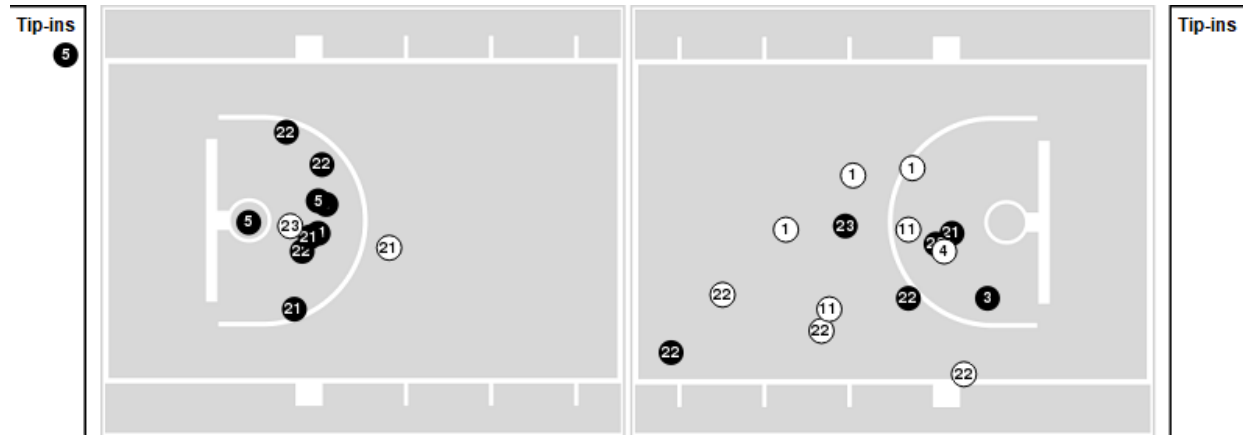
Players => 0, 1, 2, 3, 4, 5, 10, 11, 13, 15, 21, 22, 23, 30, 31, 34 FG Types=>All Results=>All

**TCU**

**All Field Goals**



**Blow Up Chart**



● Made ○ Missed N - Player Number

TCU	M/A	%
Field Goals	24/56	43
2 Points	16/37	43
3 Points	8/19	42
Free Throws	6/10	60

TCU	M/A	%
Points in the Paint	32 (16 / 27)	59
Fast Break Points	12 (6/6)	100
Second Chance Points	2 (1/5)	20
Effective FG%	51	



**Officials:** Keith Kimble, Rick Crawford, Ron Groover

**Kansas**

Lineup	Quarter On	Time On	Quarter Off	Time Off	Time on Court	Score	Score Diff	Reb	Stl	Tov	Ass	PPP
2- Braun C/ 3- Harris D/ 10- Wilson J/ 30- Agbaji O/ 33- McCormack D/	1	20:00	1	15:34	04:26	10-7	3	2	1	0	4	1.4286
2- Braun C/ 3- Harris D/ 10- Wilson J/ 30- Agbaji O/ 44- Lightfoot M/	1	15:34	1	13:55	01:39	7-2	5	1	1	0	1	2.3333
1- Grant-Foster T/ 2- Braun C/ 10- Wilson J/ 30- Agbaji O/ 44- Lightfoot M/	1	13:55	1	12:46	01:09	2-4	-2	1	0	0	0	1.5152
1- Grant-Foster T/ 10- Wilson J/ 13- Enaruna T/ 30- Agbaji O/ 33- McCormack D/	1	12:46	1	11:03	01:43	4-4	0	1	0	0	0	1.7241
2- Braun C/ 10- Wilson J/ 13- Enaruna T/ 30- Agbaji O/ 33- McCormack D/	1	11:03	1	08:55	02:08	5-3	2	2	0	1	2	1.6667
1- Grant-Foster T/ 2- Braun C/ 13- Enaruna T/ 30- Agbaji O/ 33- McCormack D/	1	08:55	1	08:09	00:46	0-4	-4	1	0	1	0	0.0000
2- Braun C/ 3- Harris D/ 10- Wilson J/ 30- Agbaji O/ 33- McCormack D/	1	08:09	1	04:50	03:19	13-4	9	4	0	0	2	1.8895
2- Braun C/ 3- Harris D/ 10- Wilson J/ 30- Agbaji O/ 44- Lightfoot M/	1	04:50	1	04:50	00:00	1-0	1	0	0	0	0	2.2727
2- Braun C/ 3- Harris D/ 10- Wilson J/ 13- Enaruna T/ 44- Lightfoot M/	1	04:50	1	02:42	02:08	2-3	-1	3	0	1	1	0.6667
2- Braun C/ 10- Wilson J/ 13- Enaruna T/ 30- Agbaji O/ 44- Lightfoot M/	1	02:42	2	20:00	02:42	5-4	1	2	0	1	2	1.6667
2- Braun C/ 3- Harris D/ 10- Wilson J/ 30- Agbaji O/ 33- McCormack D/	2	20:00	2	12:26	07:34	23-13	10	5	1	1	6	1.6862
2- Braun C/ 3- Harris D/ 10- Wilson J/ 13- Enaruna T/ 44- Lightfoot M/	2	12:26	2	11:46	00:40	2-3	-1	0	0	0	0	2.0000
2- Braun C/ 10- Wilson J/ 13- Enaruna T/ 30- Agbaji O/ 44- Lightfoot M/	2	11:46	2	10:19	01:27	2-0	2	2	0	1	0	0.6944
3- Harris D/ 10- Wilson J/ 13- Enaruna T/ 30- Agbaji O/ 44- Lightfoot M/	2	10:19	2	07:42	02:37	2-5	-3	3	1	2	1	0.6667
2- Braun C/ 3- Harris D/ 13- Enaruna T/ 30- Agbaji O/ 44- Lightfoot M/	2	07:42	2	06:34	01:08	2-2	0	3	0	0	0	2.0000
2- Braun C/ 3- Harris D/ 10- Wilson J/ 13- Enaruna T/ 44- Lightfoot M/	2	06:34	2	05:58	00:36	0-0	0	2	1	0	0	0.0000
2- Braun C/ 3- Harris D/ 10- Wilson J/ 13- Enaruna T/ 33- McCormack D/	2	05:58	2	05:11	00:47	2-0	2	1	0	0	1	1.3889
1- Grant-Foster T/ 2- Braun C/ 3- Harris D/ 10- Wilson J/ 33- McCormack D/	2	05:11	2	02:53	02:18	7-6	1	2	0	0	1	2.3333
1- Grant-Foster T/ 4- Jossell L/ 12- Teahan C/ 35- Muscadin G/ 44- Lightfoot M/	2	02:53	2	00:00	02:53	4-0	4	6	0	0	0	0.8000



**Officials:** Keith Kimble, Rick Crawford, Ron Groover

**TCU**

Lineup	Quarter On	Time On	Quarter Off	Time Off	Time on Court	Score	Score Diff	Reb	Stl	Tov	Ass	PPP
1- Miles M/ 4- Fuller P/ 21- Samuel K/ 22- Nembhard R/ 34- Easley K/	1	20:00	1	17:18	02:42	2-5	-3	2	0	1	0	0.6667
1- Miles M/ 5- O'Bannon C/ 21- Samuel K/ 22- Nembhard R/ 34- Easley K/	1	17:18	1	17:18	00:00	0-0	0	0	0	0	0	0.0000
1- Miles M/ 4- Fuller P/ 5- O'Bannon C/ 21- Samuel K/ 22- Nembhard R/	1	17:18	1	15:34	01:44	5-5	0	2	0	0	2	1.6667
1- Miles M/ 4- Fuller P/ 5- O'Bannon C/ 22- Nembhard R/ 23- LeDee J/	1	15:34	1	14:13	01:21	1-7	-6	1	0	1	0	0.3472
1- Miles M/ 3- Farabello F/ 4- Fuller P/ 5- O'Bannon C/ 23- LeDee J/	1	14:13	1	14:02	00:11	0-0	0	0	0	0	0	0.0000
1- Miles M/ 3- Farabello F/ 5- O'Bannon C/ 11- Todd T/ 23- LeDee J/	1	14:02	1	13:44	00:18	2-1	1	0	0	0	0	1.5152
3- Farabello F/ 5- O'Bannon C/ 11- Todd T/ 22- Nembhard R/ 23- LeDee J/	1	13:44	1	12:46	00:58	3-1	2	1	0	0	1	3.0000
3- Farabello F/ 5- O'Bannon C/ 11- Todd T/ 21- Samuel K/ 22- Nembhard R/	1	12:46	1	12:12	00:34	2-1	1	0	0	0	0	2.0000
3- Farabello F/ 11- Todd T/ 21- Samuel K/ 22- Nembhard R/ 34- Easley K/	1	12:12	1	10:18	01:54	2-6	-4	0	0	0	0	0.6944
3- Farabello F/ 4- Fuller P/ 21- Samuel K/ 22- Nembhard R/ 34- Easley K/	1	10:18	1	10:18	00:00	0-0	0	0	0	0	0	0.0000
1- Miles M/ 4- Fuller P/ 21- Samuel K/ 22- Nembhard R/ 34- Easley K/	1	10:18	1	06:21	03:57	9-12	-3	0	2	1	3	1.0817
1- Miles M/ 3- Farabello F/ 4- Fuller P/ 21- Samuel K/ 34- Easley K/	1	06:21	1	04:50	01:31	2-3	-1	1	0	0	1	0.6667
3- Farabello F/ 4- Fuller P/ 5- O'Bannon C/ 22- Nembhard R/ 23- LeDee J/	1	04:50	1	02:42	02:08	3-3	0	1	0	0	1	1.0000
1- Miles M/ 4- Fuller P/ 5- O'Bannon C/ 22- Nembhard R/ 23- LeDee J/	1	02:42	1	01:37	01:05	2-2	0	1	0	0	0	1.0000
1- Miles M/ 4- Fuller P/ 22- Nembhard R/ 23- LeDee J/ 34- Easley K/	1	01:37	2	20:00	01:37	2-3	-1	0	0	0	0	1.0000
1- Miles M/ 4- Fuller P/ 21- Samuel K/ 22- Nembhard R/ 34- Easley K/	2	20:00	2	15:32	04:28	7-14	-7	1	0	2	2	1.0000
1- Miles M/ 4- Fuller P/ 22- Nembhard R/ 23- LeDee J/ 34- Easley K/	2	15:32	2	15:00	00:32	0-1	-1	1	0	0	0	0.0000
3- Farabello F/ 5- O'Bannon C/ 11- Todd T/ 22- Nembhard R/ 23- LeDee J/	2	15:00	2	14:16	00:44	0-4	-4	0	0	1	0	0.0000
2- Pearson M/ 3- Farabello F/ 5- O'Bannon C/ 22- Nembhard R/ 23- LeDee J/	2	14:16	2	11:46	02:30	9-6	3	1	0	1	2	1.8000
1- Miles M/ 2- Pearson M/ 3- Farabello F/ 5- O'Bannon C/ 23- LeDee J/	2	11:46	2	10:19	01:27	0-2	-2	1	0	1	0	0.0000
1- Miles M/ 2- Pearson M/ 3- Farabello F/ 23- LeDee J/ 34- Easley K/	2	10:19	2	09:40	00:39	0-0	0	0	0	0	0	0.0000
1- Miles M/ 3- Farabello F/ 4- Fuller P/ 23- LeDee J/ 34- Easley K/	2	09:40	2	07:42	01:58	5-2	3	0	0	1	1	1.6667
1- Miles M/ 3- Farabello F/ 21- Samuel K/ 22- Nembhard R/ 34- Easley K/	2	07:42	2	06:34	01:08	2-2	0	0	0	0	0	2.0000
1- Miles M/ 11- Todd T/ 22- Nembhard R/ 23- LeDee J/ 34- Easley K/	2	06:34	2	05:11	01:23	0-2	-2	4	0	1	0	0.0000
1- Miles M/ 5- O'Bannon C/ 11- Todd T/ 22- Nembhard R/ 23- LeDee J/	2	05:11	2	02:53	02:18	6-7	-1	0	0	0	2	2.0000
3- Farabello F/ 5- O'Bannon C/ 11- Todd T/ 22- Nembhard R/ 23- LeDee J/	2	02:53	2	02:14	00:39	0-2	-2	0	0	0	0	0.0000
0- Lampkin E/ 3- Farabello F/ 11- Todd T/ 15- Frank T/ 22- Nembhard R/	2	02:14	2	00:00	02:14	0-2	-2	3	0	0	0	0.0000



**Kansas at TCU**

01/05/21 Ed and Rae Schollmaier Arena, Fort Worth  
2020-21 Men's Basketball

**Game Time:** 9:00 PM  
**Game Duration:** 1:59  
**Attendance:** 1,894

**Officials:** Keith Kimble, Rick Crawford, Ron Groover

**Kansas**

Lineup	Time	Score	Score Diff	Pts/Min	Reb	Stl	Tov	Ast	PPP
2- Braun C/ 3- Harris D/ 10- Wilson J/ 30- Agbaji O/ 33- McCormack D/	15:19	46-24	22	3.0033	11	2	1	12	1.6715
2- Braun C/ 10- Wilson J/ 13- Enaruna T/ 30- Agbaji O/ 44- Lightfoot M/	04:09	7-4	3	1.6867	4	0	2	2	1.1905
2- Braun C/ 3- Harris D/ 10- Wilson J/ 13- Enaruna T/ 44- Lightfoot M/	03:24	4-6	-2	1.1765	5	1	1	1	0.6803
1- Grant-Foster T/ 4- Jossell L/ 12- Teahan C/ 35- Muscadin G/ 44- Lightfoot M/	02:53	4-0	4	1.3873	6	0	0	0	0.8000
3- Harris D/ 10- Wilson J/ 13- Enaruna T/ 30- Agbaji O/ 44- Lightfoot M/	02:37	2-5	-3	0.7643	3	1	2	1	0.6667
1- Grant-Foster T/ 2- Braun C/ 3- Harris D/ 10- Wilson J/ 33- McCormack D/	02:18	7-6	1	3.0435	2	0	0	1	2.3333
2- Braun C/ 10- Wilson J/ 13- Enaruna T/ 30- Agbaji O/ 33- McCormack D/	02:08	5-3	2	2.3438	2	0	1	2	1.6667
1- Grant-Foster T/ 10- Wilson J/ 13- Enaruna T/ 30- Agbaji O/ 33- McCormack D/	01:43	4-4	0	2.3301	1	0	0	0	1.7241
2- Braun C/ 3- Harris D/ 10- Wilson J/ 30- Agbaji O/ 44- Lightfoot M/	01:39	8-2	6	4.8485	1	1	0	1	2.3256
1- Grant-Foster T/ 2- Braun C/ 10- Wilson J/ 30- Agbaji O/ 44- Lightfoot M/	01:09	2-4	-2	1.7391	1	0	0	0	1.5152
2- Braun C/ 3- Harris D/ 13- Enaruna T/ 30- Agbaji O/ 44- Lightfoot M/	01:08	2-2	0	1.7647	3	0	0	0	2.0000
2- Braun C/ 3- Harris D/ 10- Wilson J/ 13- Enaruna T/ 33- McCormack D/	00:47	2-0	2	2.5532	1	0	0	1	1.3889
1- Grant-Foster T/ 2- Braun C/ 13- Enaruna T/ 30- Agbaji O/ 33- McCormack D/	00:46	0-4	-4	0.0000	1	0	1	0	0.0000



**Kansas at TCU**

01/05/21 Ed and Rae Schollmaier Arena, Fort Worth  
2020-21 Men's Basketball

**Game Time:** 9:00 PM  
**Game Duration:** 1:59  
**Attendance:** 1,894

**Officials:** Keith Kimble, Rick Crawford, Ron Groover

**TCU**

Lineup	Time	Score	Score Diff	Pts/Min	Reb	Stl	Tov	Ast	PPP
1- Miles M/ 4- Fuller P/ 21- Samuel K/ 22- Nembhard R/ 34- Easley K/	11:07	18-31	-13	1.6192	3	2	4	5	0.9825
2- Pearson M/ 3- Farabello F/ 5- O'Bannon C/ 22- Nembhard R/ 23- LeDee J/	02:30	9-6	3	3.6000	1	0	1	2	1.8000
1- Miles M/ 4- Fuller P/ 5- O'Bannon C/ 22- Nembhard R/ 23- LeDee J/	02:26	3-9	-6	1.2329	2	0	1	0	0.6148
3- Farabello F/ 5- O'Bannon C/ 11- Todd T/ 22- Nembhard R/ 23- LeDee J/	02:21	3-7	-4	1.2766	1	0	1	1	0.7500
1- Miles M/ 5- O'Bannon C/ 11- Todd T/ 22- Nembhard R/ 23- LeDee J/	02:18	6-7	-1	2.6087	0	0	0	2	2.0000
0- Lampkin E/ 3- Farabello F/ 11- Todd T/ 15- Frank T/ 22- Nembhard R/	02:14	0-2	-2	0.0000	3	0	0	0	0.0000
1- Miles M/ 4- Fuller P/ 22- Nembhard R/ 23- LeDee J/ 34- Easley K/	02:09	2-4	-2	0.9302	1	0	0	0	0.6667
3- Farabello F/ 4- Fuller P/ 5- O'Bannon C/ 22- Nembhard R/ 23- LeDee J/	02:08	3-3	0	1.4063	1	0	0	1	1.0000
1- Miles M/ 3- Farabello F/ 4- Fuller P/ 23- LeDee J/ 34- Easley K/	01:58	5-2	3	2.5424	0	0	1	1	1.6667
3- Farabello F/ 11- Todd T/ 21- Samuel K/ 22- Nembhard R/ 34- Easley K/	01:54	2-6	-4	1.0526	0	0	0	0	0.6944
1- Miles M/ 4- Fuller P/ 5- O'Bannon C/ 21- Samuel K/ 22- Nembhard R/	01:44	5-5	0	2.8846	2	0	0	2	1.6667
1- Miles M/ 3- Farabello F/ 4- Fuller P/ 21- Samuel K/ 34- Easley K/	01:31	2-3	-1	1.3187	1	0	0	1	0.6667
1- Miles M/ 2- Pearson M/ 3- Farabello F/ 5- O'Bannon C/ 23- LeDee J/	01:27	0-2	-2	0.0000	1	0	1	0	0.0000
1- Miles M/ 11- Todd T/ 22- Nembhard R/ 23- LeDee J/ 34- Easley K/	01:23	0-2	-2	0.0000	4	0	1	0	0.0000
1- Miles M/ 3- Farabello F/ 21- Samuel K/ 22- Nembhard R/ 34- Easley K/	01:08	2-2	0	1.7647	0	0	0	0	2.0000
1- Miles M/ 2- Pearson M/ 3- Farabello F/ 23- LeDee J/ 34- Easley K/	00:39	0-0	0	0.0000	0	0	0	0	0.0000
3- Farabello F/ 5- O'Bannon C/ 11- Todd T/ 21- Samuel K/ 22- Nembhard R/	00:34	2-1	1	3.5294	0	0	0	0	2.0000
1- Miles M/ 3- Farabello F/ 5- O'Bannon C/ 11- Todd T/ 23- LeDee J/	00:18	2-1	1	6.6667	0	0	0	0	1.5152
1- Miles M/ 3- Farabello F/ 4- Fuller P/ 5- O'Bannon C/ 23- LeDee J/	00:11	0-0	0	0.0000	0	0	0	0	0.0000
1- Miles M/ 5- O'Bannon C/ 21- Samuel K/ 22- Nembhard R/ 34- Easley K/	00:00	0-0	0	NaN	0	0	0	0	0.0000
3- Farabello F/ 4- Fuller P/ 21- Samuel K/ 22- Nembhard R/ 34- Easley K/	00:00	0-0	0	NaN	0	0	0	0	0.0000