



Oklahoma St. at Kansas

01/30/21 Allen Fieldhouse, Lawrence
2020-21 Women's Basketball

Officials: Michael McConnell, Maj Forsberg, Bryan Enterline

Oklahoma St. - 75

Record: 12-5 (8-3)

NO.	Name	Min	FG			Rebounds			Fouls		TP	AS	TO	ST	Blocks		+/-
			M-A	M-A	M-A	OR	DR	TOT	PF	FD					BS	BA	
4	Natasha Mack	F 28:38	10-20	0-1	1-2	5	11	16	0	4	21	0	1	4	6	0	30
14	Taylen Collins	F 15:36	0-3	0-0	1-2	3	1	4	1	1	1	0	2	2	0	0	-3
15	Lexy Keys	G 31:38	3-8	1-4	2-2	0	3	3	2	1	9	3	1	1	2	1	28
21	Ja'Mee Asberry	G 36:09	6-16	3-3	0-0	1	2	3	1	1	15	4	1	2	0	0	26
23	Lauren Fields	G 32:25	7-15	0-5	9-10	2	4	6	2	7	23	1	3	1	0	0	17
1	Kassidy De Lapp	14:21	0-3	0-0	0-0	0	6	6	1	1	0	2	1	1	2	1	1
2	Neferatali Notoa	24:59	1-4	0-1	2-3	1	4	5	4	2	4	2	1	1	0	0	29
25	Abbie Winchester	08:08	1-2	0-0	0-0	1	1	2	0	0	2	1	1	0	0	0	-3
11	Bigue Sarr	01:03	0-0	0-0	0-0	0	0	0	0	0	0	0	0	0	0	0	0
3	Micah Dennis	03:51	0-1	0-0	0-0	1	1	2	1	0	0	0	0	0	0	0	-2
35	Brittany Reeves	03:12	0-1	0-0	0-0	1	1	2	1	0	0	0	0	0	0	0	-3
Team						1	1	2			0		0				
Totals			28-73	4-14	15-19	16	35	51	13	17	75	13	11	12	10	2	24

Technical Fouls::NONE

Shooting By Period		
1 st FG%	4-16	25.0%
3PT%	0-6	0.0%
FT%	1-2	50%
2 nd FG%	5-22	22.7%
3PT%	2-3	66.7%
FT%	1-2	50%
3 rd FG%	10-20	50.0%
3PT%	1-3	33.3%
FT%	7-8	87.5%
4 th FG%	9-15	60.0%
3PT%	1-2	50.0%
FT%	6-7	85.7%
GM FG%	28-73	38.4%
3PT%	4-14	28.6%
FT%	15-19	78.9%

Dead Ball Rebounds: 2, 0

Kansas - 51

Record: 6-7 (2-5)

NO.	Name	Min	FG			Rebounds			Fouls		TP	AS	TO	ST	Blocks		+/-
			M-A	M-A	M-A	OR	DR	TOT	PF	FD					BS	BA	
1	Tina Stephens	F 17:09	1-6	0-0	0-0	0	2	2	3	0	2	0	3	1	0	1	-12
45	Chisom Ajekwu	C 22:46	2-10	0-0	0-0	4	6	10	2	1	4	0	1	0	2	4	-8
5	Aniya Thomas	G 30:56	3-8	2-6	0-0	1	7	8	1	1	8	1	0	2	0	1	-12
13	Holly Kersgieter	G 29:21	3-13	0-3	6-7	1	5	6	3	5	12	1	2	2	0	3	-22
15	Zakayah Franklin	G 29:52	3-11	0-3	3-4	1	1	2	2	2	9	2	2	0	0	0	-22
11	Ioanna Chatzileonti	21:05	2-4	0-0	2-2	0	4	4	2	1	6	1	7	0	0	0	-20
4	Mia Vuksic	07:28	1-3	1-3	0-0	0	0	0	2	0	3	0	1	0	0	1	-13
21	Brooklyn Mitchell	10:08	1-1	1-1	1-2	0	0	0	1	1	4	2	1	0	0	0	-2
20	Julie Brosseau	19:43	1-5	1-5	0-0	0	1	1	1	2	3	1	2	0	0	0	-14
25	Chandler Prater	11:32	0-2	0-0	0-0	1	3	4	0	0	0	1	0	1	0	0	5
Team						5	2	7			0		0				
Totals			17-63	5-21	12-15	13	31	44	17	13	51	9	19	6	2	10	-24

Technical Fouls::NONE

Shooting By Period		
1 st FG%	3-18	16.7%
3PT%	0-6	0.0%
FT%	6-8	75%
2 nd FG%	4-12	33.3%
3PT%	0-2	0.0%
FT%	0-0	0%
3 rd FG%	4-17	23.5%
3PT%	0-5	0.0%
FT%	3-3	100%
4 th FG%	6-16	37.5%
3PT%	5-8	62.5%
FT%	3-4	75%
GM FG%	17-63	27.0%
3PT%	5-21	23.8%
FT%	12-15	80.0%

Dead Ball Rebounds: 1, 0

	OKSTAT	KANSAS
Biggest lead	31 (4 th 4:21)	5 (1 st 6:53)
Best Scoring Run	10(3 rd 2:23)	7(4 th 1:31)
Lead Changes	3	
Times Tied	1	
Time with Lead	23:14	14:23

	OKSTAT	KANSAS
Points from		
Turnovers	17	11
Paint	32	20
Second Chance	5	6
Fast Breaks	17	4
Bench	6	16

	Period by Period Scoring				
	1st	2nd	3rd	4th	TOT
OKSTAT	9	13	28	25	75
KANSAS	12	8	11	20	51



Period 1

Quarter Starters:

KANSAS	1 Stephens T	5 Thomas A	13 Kersgieter H	15 Franklin Z	45 Ajekwu C
OKSTAT	4 Mack N	14 Collins T	15 Keys L	21 Asberry J	23 Fields L

Game Time	KANSAS	Score	Diff	OKSTAT
10:00	45 AJEKWU C jumpball lost			4 MACK N jumpball won
09:46				23 FIELDS L 3pt FG , jump shot missed
09:42	45 AJEKWU C defensive rebound (1)			
09:35	15 FRANKLIN Z foul drawn (1)			15 KEYS L foul shooting (1 - 1)
09:35	15 FRANKLIN Z free throw 1 - 2 made (1)	1-0	1	
09:35	15 FRANKLIN Z free throw 2 - 2 missed			
09:33	45 AJEKWU C offensive rebound (2)			
09:32	45 AJEKWU C 2pt FG second chance in the paint, layup blocked			
09:32				4 MACK N block (1)
09:32				4 MACK N defensive rebound (1)
09:22		1-2	-1	23 FIELDS L 2pt FG in the paint, turnaround jump shot made (2)
09:02	13 KERSGIETER H turnover travel (1)			
08:44				4 MACK N turnover travel (1)
08:32	5 THOMAS A 3pt FG from turnover, jump shot missed			
08:27	45 AJEKWU C offensive rebound (3)			
08:27	45 AJEKWU C 2pt FG from turnover second chance in the paint, layup made (2)	3-2	1	
08:16				21 ASBERRY J 2pt FG outside the paint, jump shot missed
08:13	1 STEPHENS T defensive rebound (1)			
07:57	13 KERSGIETER H 2pt FG in the paint, layup missed			
07:54	45 AJEKWU C offensive rebound (4)			
07:50	45 AJEKWU C 2pt FG second chance in the paint, layup made (4)	5-2	3	
07:38				4 MACK N 3pt FG , step back jump shot missed
07:32	13 KERSGIETER H defensive rebound (1)			
07:31	15 FRANKLIN Z turnover bad pass (1)			4 MACK N steal (1)
07:20				15 KEYS L 3pt FG from turnover, jump shot missed
07:13				4 MACK N offensive rebound (2)
07:13				4 MACK N 2pt FG from turnover second chance in the paint, layup missed
07:11	defensive rebound (7)			
07:11	45 AJEKWU C substitution out			
07:11	11 CHATZILEONTI I substitution in			
07:11				23 FIELDS L substitution out
07:11				2 NOTOAN substitution in
07:11				4 MACK N substitution out
07:11				1 DE LAPP K substitution in
06:53	13 KERSGIETER H foul drawn (1)			2 NOTOAN foul shooting (1 - 2)
06:53	13 KERSGIETER H free throw 1 - 2 made (1)	6-2	4	
06:53	13 KERSGIETER H free throw 2 - 2 made (2)	7-2	5	
06:47	1 STEPHENS T foul shooting (1 - 1)			14 COLLINS T foul drawn (1)
06:46				14 COLLINS T free throw 1 - 2 missed
06:46				offensive dead ball rebound (1)



Oklahoma St. at Kansas

01/30/21 Allen Fieldhouse, Lawrence
2020-21 Women's Basketball

Officials: Michael McConnell, Maj Forsberg, Bryan Enterline

Game Time	KANSAS	Score	Diff	OKSTAT
06:46		7-3	4	14 COLLINS T free throw 2 - 2 made (1)
06:26	11 CHATZILEONTI I 2pt FG in the paint, layup missed			
06:24				1 DE LAPP K defensive rebound (1)
06:16				21 ASBERRY J turnover bad pass (1)
06:16	1 STEPHENS T substitution out			
06:16	4 VUKSIC M substitution in			
06:04	15 FRANKLIN Z 3pt FG from turnover, jump shot missed			
06:01				1 DE LAPP K defensive rebound (2)
05:46		7-5	2	15 KEYS L 2pt FG outside the paint, pull up jump shot made (2)
05:35	5 THOMAS A 2pt FG in the paint, layup blocked			
05:35				1 DE LAPP K block (1)
05:35	offensive rebound (8)			
05:35	15 FRANKLIN Z substitution out			
05:35	21 MITCHELL B substitution in			
05:35				14 COLLINS T substitution out
05:35				25 WINCHESTER A substitution in
05:34	13 KERSGIETER H 2pt FG second chance in the paint, layup missed			
05:32	13 KERSGIETER H offensive rebound (2)			
05:32	13 KERSGIETER H 2pt FG second chance in the paint, layup missed			
05:32				1 DE LAPP K defensive rebound (3)
05:32	13 KERSGIETER H foul personal (1 - 2)			1 DE LAPP K foul drawn (1)
05:32	13 KERSGIETER H substitution out			
05:32	20 BROSSEAU J substitution in			
05:32				1 DE LAPP K substitution out
05:32				4 MACK N substitution in
05:19		7-7	0	4 MACK N 2pt FG in the paint, turnaround jump shot made (2)
05:19				25 WINCHESTER A assist (1)
05:00	11 CHATZILEONTI I turnover bad pass (1)			
05:00	Timeout media			
05:00	4 VUKSIC M substitution out			
05:00	11 CHATZILEONTI I substitution out			
05:00	1 STEPHENS T substitution in			
05:00	45 AJEKWU C substitution in			
04:42				2 NOTOAN 3pt FG from turnover, jump shot missed
04:40	45 AJEKWU C defensive rebound (5)			
04:27	20 BROSSEAU J 3pt FG , jump shot missed			
04:24				25 WINCHESTER A defensive rebound (1)
04:20				15 KEYS L substitution out
04:20				23 FIELDS L substitution in
04:18				21 ASBERRY J 2pt FG outside the paint, jump shot missed
04:15	5 THOMAS A defensive rebound (1)			
04:02	1 STEPHENS T turnover bad pass (1)			
04:02	5 THOMAS A substitution out			
04:02	13 KERSGIETER H substitution in			
04:02				2 NOTOAN substitution out
04:02				14 COLLINS T substitution in
03:50	1 STEPHENS T steal (1)			25 WINCHESTER A turnover bad pass (1)
03:31	20 BROSSEAU J turnover bad pass (1)			14 COLLINS T steal (1)



Oklahoma St. at Kansas

01/30/21 Allen Fieldhouse, Lawrence
2020-21 Women's Basketball

Officials: Michael McConnell, Maj Forsberg, Bryan Enterline

Game Time	KANSAS	Score	Diff	OKSTAT
03:26	13 KERSGIETER H steal (1)			14 COLLINS T turnover bad pass (1)
03:21	1 STEPHENS T 2pt FG fast break from turnover in the paint, layup made (2)	9-7	2	
03:21	13 KERSGIETER H assist (1)			
03:04				4 MACK N 2pt FG outside the paint, jump shot missed
03:00	45 AJEKWU C defensive rebound (6)			
02:51	20 BROSSEAU J foul drawn (1)			23 FIELDS L foul personal (1 - 3)
02:51	20 BROSSEAU J substitution out			
02:51	21 MITCHELL B substitution out			
02:51	5 THOMAS A substitution in			
02:51	15 FRANKLIN Z substitution in			
02:51				4 MACK N substitution out
02:51				25 WINCHESTER A substitution out
02:51				1 DE LAPP K substitution in
02:51				11 SARR B substitution in
02:33	15 FRANKLIN Z 2pt FG in the paint, layup missed			
02:30				1 DE LAPP K defensive rebound (4)
02:20	13 KERSGIETER H steal (2)			1 DE LAPP K turnover bad pass (1)
02:20	1 STEPHENS T substitution out			
02:20	25 PRATER C substitution in			
02:20				21 ASBERRY J substitution out
02:20				3 DENNIS M substitution in
02:11	13 KERSGIETER H 3pt FG from turnover, jump shot missed			
02:07				23 FIELDS L defensive rebound (1)
02:00	25 PRATER C steal (1)			23 FIELDS L turnover bad pass (1)
01:53	5 THOMAS A 3pt FG from turnover, jump shot missed			
01:50	offensive rebound (13)			
01:48	13 KERSGIETER H foul drawn (2)			14 COLLINS T foul shooting (1 - 4)
01:48				11 SARR B substitution out
01:48				4 MACK N substitution in
01:48	13 KERSGIETER H free throw 1 - 2 made (3)	10-7	3	
01:48	13 KERSGIETER H free throw 2 - 2 made (4)	11-7	4	
01:35	45 AJEKWU C foul personal (1 - 3)			4 MACK N foul drawn (1)
01:35				14 COLLINS T substitution out
01:35				15 KEYS L substitution in
01:31				23 FIELDS L 3pt FG , jump shot missed
01:29	5 THOMAS A defensive rebound (2)			
01:22	13 KERSGIETER H foul drawn (3)			3 DENNIS M foul shooting (1 - 5)
01:22	13 KERSGIETER H free throw 1 - 2 made (5)	12-7	5	
01:22	13 KERSGIETER H free throw 2 - 2 missed			
01:20	25 PRATER C offensive rebound (1)			
01:17	15 FRANKLIN Z 3pt FG second chance, jump shot missed			
01:14				3 DENNIS M defensive rebound (1)
01:09				3 DENNIS M 2pt FG outside the paint, jump shot missed
01:06	5 THOMAS A defensive rebound (3)			
01:03	13 KERSGIETER H 2pt FG in the paint, layup blocked			
01:03				15 KEYS L block (1)
01:03				1 DE LAPP K defensive rebound (5)
00:45				15 KEYS L 2pt FG in the paint, jump shot blocked



Oklahoma St. at Kansas

01/30/21 Allen Fieldhouse, Lawrence
2020-21 Women's Basketball

Officials: Michael McConnell, Maj Forsberg, Bryan Enterline

Game Time	KANSAS	Score	Diff	OKSTAT
00:45	45 AJEKWU C block (1)			
00:40	13 KERSGIETER H defensive rebound (3)			
00:14	13 KERSGIETER H 2pt FG in the paint, layup blocked			
00:14				1 DE LAPP K block (2)
00:10				4 MACK N defensive rebound (3)
00:06				23 FIELDS L 3pt FG , jump shot missed
00:03				3 DENNIS M offensive rebound (2)
00:00		12-9	3	23 FIELDS L 2pt FG second chance in the paint, layup made (4)
END OF PERIOD				
KANSAS 12-9 OKSTAT				



Oklahoma St. at Kansas

01/30/21 Allen Fieldhouse, Lawrence
2020-21 Women's Basketball

Officials: Michael McConnell, Maj Forsberg, Bryan Enterline

Oklahoma St. - 9

NO.	Name	F	Min	FG			Rebounds			Fouls		TP	AS	TO	ST	Blocks		+/-
				M-A	3P	FT	OR	DR	TOT	PF	FD					BS	BA	
4	Natasha Mack	F	07:18	1-4	0-1	0-0	1	2	3	0	1	2	0	1	1	1	0	-4
14	Taylen Collins	F	06:52	0-0	0-0	1-2	0	0	0	1	1	1	0	1	1	0	0	-6
15	Lexy Keys	G	07:15	1-3	0-1	0-0	0	0	0	1	0	2	0	0	0	1	1	1
21	Ja'Mee Asberry	G	07:40	0-2	0-0	0-0	0	0	0	0	0	0	0	1	0	0	0	-2
23	Lauren Fields	G	07:09	2-5	0-3	0-0	0	1	1	1	0	4	0	1	0	0	0	-6
1	Kassidy De Lapp		04:30	0-0	0-0	0-0	0	5	5	0	1	0	0	1	0	2	0	0
2	Neferatali Notoa		03:09	0-1	0-1	0-0	0	0	0	1	0	0	0	0	0	0	0	3
25	Abbie Winchester		02:44	0-0	0-0	0-0	0	1	1	0	0	0	1	1	0	0	0	0
11	Bigue Sarr		01:03	0-0	0-0	0-0	0	0	0	0	0	0	0	0	0	0	0	0
3	Micah Dennis		02:20	0-1	0-0	0-0	1	1	2	1	0	0	0	0	0	0	0	-1
Team							0	0	0			0						
Totals				4-16	0-6	1-2	2	10	12	5	3	9	1	6	2	4	1	-3

Shooting By Period		
1st FG%	4-16	25.0%
3PT%	0-6	0.0%
FT%	1-2	50%
GM FG%	4-16	25.0%
3PT%	0-6	0.0%
FT%	1-2	50.0%

Dead Ball Rebounds: 1, 0

Technical Fouls::NONE

Kansas - 12

NO.	Name	F	Min	FG			Rebounds			Fouls		TP	AS	TO	ST	Blocks		+/-
				M-A	3P	FT	OR	DR	TOT	PF	FD					BS	BA	
1	Tina Stephens	F	06:24	1-1	0-0	0-0	0	1	1	1	0	2	0	1	1	0	0	6
45	Chisom Ajekwu	C	07:49	2-3	0-0	0-0	3	3	6	1	0	4	0	0	0	1	1	6
5	Aniya Thomas	G	08:49	0-3	0-2	0-0	0	3	3	0	0	0	0	0	0	0	1	1
13	Holly Kersgieter	G	08:30	0-6	0-1	5-6	1	2	3	1	3	5	1	1	2	0	2	5
15	Zakiyah Franklin	G	07:16	0-3	0-2	1-2	0	0	0	0	1	1	0	1	0	0	0	3
11	Ioanna Chatzileonti		02:11	0-1	0-0	0-0	0	0	0	0	0	0	0	1	0	0	0	-3
4	Mia Vuksic		01:16	0-0	0-0	0-0	0	0	0	0	0	0	0	0	0	0	0	-4
21	Brooklyn Mitchell		02:44	0-0	0-0	0-0	0	0	0	0	0	0	0	0	0	0	0	0
20	Julie Brosseau		02:41	0-1	0-1	0-0	0	0	0	0	1	0	0	1	0	0	0	0
25	Chandler Prater		02:20	0-0	0-0	0-0	1	0	1	0	0	0	0	0	1	0	0	1
Team							2	1	3			0						
Totals				3-18	0-6	6-8	7	10	17	3	5	12	1	5	4	1	4	3

Shooting By Period		
1st FG%	3-18	16.7%
3PT%	0-6	0.0%
FT%	6-8	75%
GM FG%	3-18	16.7%
3PT%	0-6	0.0%
FT%	6-8	75.0%

Dead Ball Rebounds: 0, 0

Technical Fouls::NONE

	OKSTAT	KANSAS
Biggest lead	1 (1 st 9:22)	5 (1 st 6:53)
Best Scoring Run	5 (1 st 5:19)	6 (1 st 6:53)
Lead Changes	2	
Times Tied	1	
Time with Lead	00:55	06:42

	OKSTAT	KANSAS
Points from		
Turnovers	0	6
Paint	6	6
Second Chance	2	6
Fast Breaks	0	2
Bench	0	0

	Period by Period Scoring				
	1st	2nd	3rd	4th	TOT
OKSTAT	9	13	28	25	75
KANSAS	12	8	11	20	51

**Period 2****Quarter Starters:**

KANSAS	1 Stephens T	5 Thomas A	11 Chatzileonti I	13 Kersgieter H	15 Franklin Z
OKSTAT	1 De Lapp K	4 Mack N	15 Keys L	21 Asberry J	23 Fields L

Game Time	KANSAS	Score	Diff	OKSTAT
10:00	25 PRATER C substitution out			
10:00	45 AJEKWU C substitution out			
10:00	1 STEPHENS T substitution in			
10:00	11 CHATZILEONTI I substitution in			
10:00				3 DENNIS M substitution out
10:00				21 ASBERRY J substitution in
09:38	1 STEPHENS T foul offensive (2 - 1)			21 ASBERRY J foul drawn (1)
09:38	1 STEPHENS T turnover offensive (2)			
09:38	1 STEPHENS T substitution out			
09:38	25 PRATER C substitution in			
09:18				21 ASBERRY J 2pt FG from turnover outside the paint, jump shot missed
09:15	11 CHATZILEONTI I defensive rebound (1)			
08:55	11 CHATZILEONTI I turnover bad pass (2)			23 FIELDS L steal (1)
08:50				1 DE LAPP K substitution out
08:50				15 KEYS L substitution out
08:50				2 NOTOAN N substitution in
08:50				25 WINCHESTER A substitution in
08:39				2 NOTOAN N 2pt FG from turnover in the paint, jump shot missed
08:36				4 MACK N offensive rebound (4)
08:35				23 FIELDS L 3pt FG from turnover second chance, jump shot missed
08:31				25 WINCHESTER A offensive rebound (2)
08:22				4 MACK N 2pt FG from turnover second chance in the paint, layup missed
08:19	15 FRANKLIN Z defensive rebound (1)			
08:12	15 FRANKLIN Z 2pt FG outside the paint, jump shot made (3)	14-9	5	
08:01	11 CHATZILEONTI I foul personal (1 - 2)			4 MACK N foul drawn (2)
08:01	13 KERSGIETER H substitution out			
08:01	20 BROSEAU J substitution in			
07:58				21 ASBERRY J 2pt FG outside the paint, jump shot missed
07:54	25 PRATER C defensive rebound (2)			
07:37	11 CHATZILEONTI I turnover travel (3)			
07:37	11 CHATZILEONTI I substitution out			
07:37	45 AJEKWU C substitution in			
07:15				23 FIELDS L 2pt FG from turnover outside the paint, jump shot missed
07:09				4 MACK N offensive rebound (5)
07:09		14-11	3	4 MACK N 2pt FG from turnover second chance in the paint, layup made (4)
07:06	25 PRATER C substitution out			
07:06	11 CHATZILEONTI I substitution in			
06:58	11 CHATZILEONTI I turnover bad pass (4)			4 MACK N steal (2)
06:39				23 FIELDS L 2pt FG from turnover outside the paint, jump shot missed

**Oklahoma St. at Kansas**01/30/21 Allen Fieldhouse, Lawrence
2020-21 Women's Basketball

Officials: Michael McConnell, Maj Forsberg, Bryan Enterline

Game Time	KANSAS	Score	Diff	OKSTAT
06:38	20 BROSSEAU J defensive rebound (1)			
06:38	20 BROSSEAU J foul drawn (2)			2 NOTOAN foul personal (2 - 1)
06:38	20 BROSSEAU J substitution out			
06:38	13 KERSGIETER H substitution in			
06:38				4 MACK N substitution out
06:38				35 REEVES B substitution in
06:38				2 NOTOAN substitution out
06:38				14 COLLINS T substitution in
06:24	45 AJEKWU C 2pt FG in the paint, layup missed			
06:21				35 REEVES B defensive rebound (1)
06:11				25 WINCHESTER A 2pt FG outside the paint, jump shot missed
06:06				14 COLLINS T offensive rebound (1)
06:06				14 COLLINS T 2pt FG second chance in the paint, layup missed
06:04				35 REEVES B offensive rebound (2)
06:04				35 REEVES B 2pt FG second chance in the paint, layup missed
06:03	11 CHATZILEONTI I defensive rebound (2)			
05:57	13 KERSGIETER H 2pt FG in the paint, layup made (7)	16-11	5	
05:26				21 ASBERRY J 2pt FG outside the paint, jump shot missed
05:23				14 COLLINS T offensive rebound (2)
05:12				21 ASBERRY J 2pt FG second chance outside the paint, jump shot missed
05:09				23 FIELDS L offensive rebound (2)
05:01				21 ASBERRY J 2pt FG second chance in the paint, jump shot missed
05:01	45 AJEKWU C defensive rebound (7)			
05:01	45 AJEKWU C foul drawn (1)			35 REEVES B foul personal (1 - 2)
04:57	Timeout media			
04:57	15 FRANKLIN Z substitution out			
04:57	21 MITCHELL B substitution in			
04:57				25 WINCHESTER A substitution out
04:57				35 REEVES B substitution out
04:57				2 NOTOAN substitution in
04:57				4 MACK N substitution in
04:46	45 AJEKWU C 2pt FG in the paint, jump shot blocked			
04:46				4 MACK N block (2)
04:39	45 AJEKWU C offensive rebound (8)			
04:39	45 AJEKWU C 2pt FG second chance in the paint, layup missed			
04:38				23 FIELDS L defensive rebound (3)
04:36		16-14	2	21 ASBERRY J 3pt FG , jump shot made (3)
04:36				2 NOTOAN assist (1)
04:14	11 CHATZILEONTI I turnover 3 seconds (5)			
04:14	11 CHATZILEONTI I substitution out			
04:14	1 STEPHENS T substitution in			
03:58	45 AJEKWU C foul shooting (2 - 3)			4 MACK N foul drawn (3)
03:58		16-15	1	4 MACK N free throw 1 - 2 made (5)
03:58				4 MACK N free throw 2 - 2 missed
03:57				14 COLLINS T offensive rebound (3)
03:56				14 COLLINS T turnover lost ball (2)
03:56	45 AJEKWU C substitution out			
03:56	11 CHATZILEONTI I substitution in			

**Oklahoma St. at Kansas**01/30/21 Allen Fieldhouse, Lawrence
2020-21 Women's Basketball

Officials: Michael McConnell, Maj Forsberg, Bryan Enterline

Game Time	KANSAS	Score	Diff	OKSTAT
03:26	11 CHATZILEONTI I 2pt FG from turnover in the paint, layup made (2)	18-15	3	
03:26	21 MITCHELL B assist (1)			
03:13	5 THOMAS A steal (1)			23 FIELDS L turnover lost ball (2)
03:13	13 KERSGIETER H foul drawn (4)			23 FIELDS L foul personal (2 - 3)
03:13				Timeout 30 Sec
03:13	21 MITCHELL B substitution out			
03:13	15 FRANKLIN Z substitution in			
03:13				14 COLLINS T substitution out
03:13				23 FIELDS L substitution out
03:13				1 DE LAPP K substitution in
03:13				15 KEYS L substitution in
03:04	15 FRANKLIN Z 2pt FG in the paint, layup missed			
03:00				4 MACK N defensive rebound (6)
02:53		18-17	1	4 MACK N 2pt FG outside the paint, jump shot made (7)
02:26	11 CHATZILEONTI I 2pt FG in the paint, jump shot missed			
02:24				4 MACK N defensive rebound (7)
02:19		18-19	-1	4 MACK N 2pt FG outside the paint, jump shot made (9)
02:19				21 ASBERRY J assist (1)
02:02	13 KERSGIETER H 3pt FG , jump shot missed			
01:58				4 MACK N defensive rebound (8)
01:40				2 NOTOAN N 2pt FG in the paint, layup missed
01:36				4 MACK N offensive rebound (9)
01:36				4 MACK N 2pt FG second chance in the paint, layup missed
01:34				21 ASBERRY J offensive rebound (1)
01:29				4 MACK N 2pt FG second chance in the paint, jump shot missed
01:26	11 CHATZILEONTI I defensive rebound (3)			
01:12	1 STEPHENS T 2pt FG in the paint, jump shot missed			
01:09				2 NOTOAN N defensive rebound (1)
01:07				15 KEYS L turnover travel (1)
01:07	1 STEPHENS T substitution out			
01:07	5 THOMAS A substitution out			
01:07	4 VUKSIC M substitution in			
01:07	20 BROSSEAU J substitution in			
00:53	20 BROSSEAU J 3pt FG , jump shot missed			
00:50	offensive rebound (26)			
00:44	11 CHATZILEONTI I turnover bad pass (6)			15 KEYS L steal (1)
00:36		18-22	-4	21 ASBERRY J 3pt FG from turnover, jump shot made (6)
00:36				1 DE LAPP K assist (1)
00:08	15 FRANKLIN Z 2pt FG in the paint, driving layup made (5)	20-22	-2	
00:00				21 ASBERRY J 2pt FG in the paint, layup missed
00:00	defensive rebound (27)			
END OF PERIOD				
KANSAS 20-22 OKSTAT				



Oklahoma St. at Kansas

01/30/21 Allen Fieldhouse, Lawrence
2020-21 Women's Basketball

Officials: Michael McConnell, Maj Forsberg, Bryan Enterline

Oklahoma St. - 13

NO.	Name	F	Min	FG			Rebounds			Fouls		TP	AS	TO	ST	Blocks		+/-
				M-A	3P	FT	OR	DR	TOT	PF	FD					BS	BA	
4	Natasha Mack	F	08:19	3-6	0-0	1-2	3	3	6	0	2	7	0	0	1	1	0	7
14	Taylen Collins	F	03:25	0-1	0-0	0-0	3	0	3	0	0	0	0	1	0	0	0	0
15	Lexy Keys	G	04:23	0-0	0-0	0-0	0	0	0	0	0	0	0	1	1	0	0	5
21	Ja'Mee Asberry	G	10:00	2-8	2-2	0-0	1	0	1	0	1	6	1	0	0	0	0	5
23	Lauren Fields	G	06:47	0-3	0-1	0-0	1	1	2	1	0	0	0	1	1	0	0	0
3	Micah Dennis		00:00															
2	Neferatali Notoa		07:09	0-2	0-0	0-0	0	1	1	1	0	0	1	0	0	0	0	7
25	Abbie Winchester		03:53	0-1	0-0	0-0	1	0	1	0	0	0	0	0	0	0	0	-2
35	Brittany Reeves		01:41	0-1	0-0	0-0	1	1	2	1	0	0	0	0	0	0	0	-2
1	Kassidy De Lapp		04:23	0-0	0-0	0-0	0	0	0	0	0	0	1	0	0	0	0	5
Team							0	0	0		0		0					
Totals				5-22	2-3	1-2	10	6	16	3	3	13	3	3	3	1	0	5

Shooting By Period		
2 nd FG%	5-22	22.7%
3PT%	2-3	66.7%
FT%	1-2	50%
GM FG%	5-22	22.7%
3PT%	2-3	66.7%
FT%	1-2	50.0%

Dead Ball Rebounds: 0, 0

Technical Fouls::NONE

Kansas - 8

NO.	Name	F	Min	FG			Rebounds			Fouls		TP	AS	TO	ST	Blocks		+/-
				M-A	3P	FT	OR	DR	TOT	PF	FD					BS	BA	
1	Tina Stephens	F	03:29	0-1	0-0	0-0	0	0	0	1	0	0	0	1	0	0	0	-3
45	Chisom Ajekwu	C	03:41	0-3	0-0	0-0	1	1	2	1	1	0	0	0	0	0	1	-4
5	Aniya Thomas	G	08:53	0-0	0-0	0-0	0	0	0	0	0	0	0	0	1	0	0	-4
13	Holly Kersgieter	G	08:37	1-2	0-1	0-0	0	0	0	0	1	2	0	0	0	0	0	-3
15	Zakiyah Franklin	G	08:16	2-3	0-0	0-0	0	1	1	0	0	4	0	0	0	0	0	-3
11	Ioanna Chatzileonti		09:11	1-2	0-0	0-0	0	3	3	1	0	2	0	5	0	0	0	-2
25	Chandler Prater		02:32	0-0	0-0	0-0	0	1	1	0	0	0	0	0	0	0	0	0
20	Julie Brosseau		02:30	0-1	0-1	0-0	0	1	1	0	1	0	0	0	0	0	0	-3
21	Brooklyn Mitchell		01:44	0-0	0-0	0-0	0	0	0	0	0	0	1	0	0	0	0	-2
4	Mia Vuksic		01:07	0-0	0-0	0-0	0	0	0	0	0	0	0	0	0	0	0	-1
Team							1	1	2		0		0					
Totals				4-12	0-2	0-0	2	8	10	3	3	8	1	6	1	0	1	-5

Shooting By Period		
2 nd FG%	4-12	33.3%
3PT%	0-2	0.0%
FT%	0-0	0%
GM FG%	4-12	33.3%
3PT%	0-2	0.0%
FT%	0-0	0.0%

Dead Ball Rebounds: 0, 0

Technical Fouls::NONE

	OKSTAT	KANSAS
Biggest lead	4 (2 nd 0:36)	5 (2 nd 8:12)
Best Scoring Run	7 (2 nd 0:36)	2 (2 nd 8:12)
Lead Changes	1	
Times Tied	0	
Time with Lead	02:19	06:59

Points from	OKSTAT	KANSAS
Turnovers	6	2
Paint	2	6
Second Chance	2	0
Fast Breaks	0	0
Bench	0	2

	Period by Period Scoring				
	1st	2nd	3rd	4th	TOT
OKSTAT	9	13	28	25	75
KANSAS	12	8	11	20	51



Oklahoma St. at Kansas

01/30/21 Allen Fieldhouse, Lawrence
2020-21 Women's Basketball

Officials: Michael McConnell, Maj Forsberg, Bryan Enterline

Oklahoma St. - 22

NO.	Name	F	Min	FG			Rebounds			Fouls		TP	AS	TO	ST	Blocks		+/-
				M-A	3P	FT	OR	DR	TOT	PF	FD					BS	BA	
4	Natasha Mack	F	15:37	4-10	0-1	1-2	4	5	9	0	3	9	0	1	2	2	0	3
14	Taylen Collins	F	10:17	0-1	0-0	1-2	3	0	3	1	1	1	0	2	1	0	0	-6
15	Lexy Keys	G	11:38	1-3	0-1	0-0	0	0	0	1	0	2	0	1	1	1	1	6
21	Ja'Mee Asberry	G	17:40	2-10	2-2	0-0	1	0	1	0	1	6	1	1	0	0	0	3
23	Lauren Fields	G	13:56	2-8	0-4	0-0	1	2	3	2	0	4	0	2	1	0	0	-6
1	Kassidy De Lapp		08:53	0-0	0-0	0-0	0	5	5	0	1	0	1	1	0	2	0	5
2	Neferatali Notoa		10:18	0-3	0-1	0-0	0	1	1	2	0	0	1	0	0	0	0	10
25	Abbie Winchester		06:37	0-1	0-0	0-0	1	1	2	0	0	0	1	1	0	0	0	-2
11	Bigue Sarr		01:03	0-0	0-0	0-0	0	0	0	0	0	0	0	0	0	0	0	0
3	Micah Dennis		02:20	0-1	0-0	0-0	1	1	2	1	0	0	0	0	0	0	0	-1
35	Brittany Reeves		01:41	0-1	0-0	0-0	1	1	2	1	0	0	0	0	0	0	0	-2
Team							0	0	0		0		0					
Totals				9-38	2-9	2-4	12	16	28	8	6	22	4	9	5	5	1	2

Shooting By Period		
1st FG%	4-16	25.0%
3PT%	0-6	0.0%
FT%	1-2	50%
2nd FG%	5-22	22.7%
3PT%	2-3	66.7%
FT%	1-2	50%
GM FG%	9-38	23.7%
3PT%	2-9	22.2%
FT%	2-4	50.0%

Dead Ball Rebounds: 1, 0

Technical Fouls::NONE

Kansas - 20

NO.	Name	F	Min	FG			Rebounds			Fouls		TP	AS	TO	ST	Blocks		+/-
				M-A	3P	FT	OR	DR	TOT	PF	FD					BS	BA	
1	Tina Stephens	F	09:53	1-2	0-0	0-0	0	1	1	2	0	2	0	2	1	0	0	3
45	Chisom Ajekwu	C	11:30	2-6	0-0	0-0	4	4	8	2	1	4	0	0	0	1	2	2
5	Aniya Thomas	G	17:42	0-3	0-2	0-0	0	3	3	0	0	0	0	0	1	0	1	-3
13	Holly Kersgieter	G	17:07	1-8	0-2	5-6	1	2	3	1	4	7	1	1	2	0	2	2
15	Zakiyah Franklin	G	15:32	2-6	0-2	1-2	0	1	1	0	1	5	0	1	0	0	0	0
11	Ioanna Chatzileonti		11:22	1-3	0-0	0-0	0	3	3	1	0	2	0	6	0	0	-5	
4	Mia Vuksic		02:23	0-0	0-0	0-0	0	0	0	0	0	0	0	0	0	0	-5	
21	Brooklyn Mitchell		04:28	0-0	0-0	0-0	0	0	0	0	0	0	1	0	0	0	-2	
20	Julie Brosseau		05:11	0-2	0-2	0-0	0	1	1	0	2	0	0	1	0	0	-3	
25	Chandler Prater		04:52	0-0	0-0	0-0	1	1	2	0	0	0	0	0	1	0	1	
Team							3	2	5		0		0					
Totals				7-30	0-8	6-8	9	18	27	6	8	20	2	11	5	1	5	-2

Shooting By Period		
1st FG%	3-18	16.7%
3PT%	0-6	0.0%
FT%	6-8	75%
2nd FG%	4-12	33.3%
3PT%	0-2	0.0%
FT%	0-0	0%
GM FG%	7-30	23.3%
3PT%	0-8	0.0%
FT%	6-8	75.0%

Dead Ball Rebounds: 0, 0

Technical Fouls::NONE

	OKSTAT	KANSAS
Biggest lead	4 (2 nd 0:36)	5 (1 st 6:53)
Best Scoring Run	7 (2 nd 0:36)	6 (1 st 6:53)
Lead Changes	3	
Times Tied	1	
Time with Lead	03:14	14:23

Points from	OKSTAT	KANSAS
Turnovers	6	8
Paint	8	12
Second Chance	4	6
Fast Breaks	0	2
Bench	0	2

	Period by Period Scoring				
	1st	2nd	3rd	4th	TOT
OKSTAT	9	13	28	25	75
KANSAS	12	8	11	20	51

**Period 3****Quarter Starters:**

KANSAS	1 Stephens T	5 Thomas A	13 Kersgieter H	15 Franklin Z	45 Ajekwu C
OKSTAT	4 Mack N	14 Collins T	15 Keys L	21 Asberry J	23 Fields L

Game Time	KANSAS	Score	Diff	OKSTAT
10:00	4 VUKSIC M substitution out			
10:00	11 CHATZILEONTI I substitution out			
10:00	20 BROSSEAU J substitution out			
10:00	1 STEPHENS T substitution in			
10:00	5 THOMAS A substitution in			
10:00	45 AJEKWU C substitution in			
10:00				1 DE LAPP K substitution out
10:00				2 NOTOAN N substitution out
10:00				14 COLLINS T substitution in
10:00				23 FIELDS L substitution in
09:48				4 MACK N 2pt FG in the paint, layup missed
09:45	13 KERSGIETER H defensive rebound (4)			
09:32	45 AJEKWU C 2pt FG in the paint, layup missed			
09:32	offensive rebound (29)			
09:22	1 STEPHENS T 2pt FG second chance in the paint, layup missed			
09:19	5 THOMAS A offensive rebound (4)			
09:02	1 STEPHENS T 2pt FG second chance outside the paint, jump shot missed			
08:59				15 KEYS L defensive rebound (1)
08:36				14 COLLINS T 2pt FG in the paint, layup missed
08:31	5 THOMAS A defensive rebound (5)			
08:19	5 THOMAS A 3pt FG , jump shot missed			
08:14				4 MACK N defensive rebound (10)
08:11	5 THOMAS A steal (2)			23 FIELDS L turnover bad pass (3)
08:02	5 THOMAS A 3pt FG from turnover, jump shot missed			
07:58				23 FIELDS L defensive rebound (4)
07:53	13 KERSGIETER H foul personal (2 - 1)			23 FIELDS L foul drawn (1)
07:53	45 AJEKWU C substitution out			
07:53	11 CHATZILEONTI I substitution in			
07:35		20-24	-4	4 MACK N 2pt FG in the paint, turnaround jump shot made (11)
07:16	15 FRANKLIN Z 3pt FG , jump shot missed			
07:13				14 COLLINS T defensive rebound (4)
07:07				4 MACK N 2pt FG in the paint, layup missed
07:02				4 MACK N offensive rebound (11)
07:02				4 MACK N 2pt FG second chance in the paint, layup missed
07:02	1 STEPHENS T defensive rebound (2)			
06:52	13 KERSGIETER H 3pt FG , jump shot missed			
06:48				4 MACK N defensive rebound (12)
06:44		20-26	-6	23 FIELDS L 2pt FG fast break in the paint, layup made (6)
06:44	13 KERSGIETER H foul shooting (3 - 2)			23 FIELDS L foul drawn (2)
06:44	1 STEPHENS T substitution out			
06:44	13 KERSGIETER H substitution out			
06:44	20 BROSSEAU J substitution in			



Oklahoma St. at Kansas

01/30/21 Allen Fieldhouse, Lawrence
2020-21 Women's Basketball

Officials: Michael McConnell, Maj Forsberg, Bryan Enterline

Game Time	KANSAS	Score	Diff	OKSTAT
06:44	25 PRATER C substitution in			
06:44				4 MACK N substitution out
06:44				1 DE LAPP K substitution in
06:44		20-27	-7	23 FIELDS L free throw fast break 1 - 1 made (7)
06:30	11 CHATZILEONTI I turnover bad pass (7)			21 ASBERRY J steal (1)
06:26	5 THOMAS A foul shooting (1 - 3)			23 FIELDS L foul drawn (3)
06:26	Timeout 30 Sec			
06:26		20-28	-8	23 FIELDS L free throw fast break 1 - 2 made (8)
06:26		20-29	-9	23 FIELDS L free throw fast break 2 - 2 made (9)
06:09	15 FRANKLIN Z 2pt FG in the paint, driving layup made (7)	22-29	-7	
06:02				14 COLLINS T 2pt FG in the paint, layup missed
05:58	5 THOMAS A defensive rebound (6)			
05:56	25 PRATER C 2pt FG in the paint, layup missed			
05:54	offensive rebound (34)			
05:54	20 BROSSEAU J turnover bad pass (2)			14 COLLINS T steal (2)
05:54		22-31	-9	23 FIELDS L 2pt FG from turnover in the paint, layup made (11)
05:54				1 DE LAPP K assist (2)
05:54	11 CHATZILEONTI I 2pt FG in the paint, layup made (4)	24-31	-7	
05:54	25 PRATER C assist (1)			
05:07				1 DE LAPP K 2pt FG in the paint, layup missed
05:03	25 PRATER C defensive rebound (3)			
05:00	5 THOMAS A 2pt FG fast break in the paint, layup made (2)	26-31	-5	
05:00	15 FRANKLIN Z assist (1)			
04:41	20 BROSSEAU J foul shooting (1 - 4)			15 KEYS L foul drawn (1)
04:41	Timeout media			
04:41				1 DE LAPP K substitution out
04:41				14 COLLINS T substitution out
04:41				2 NOTOAN substitution in
04:41				4 MACK N substitution in
04:41		26-32	-6	15 KEYS L free throw 1 - 2 made (3)
04:41		26-33	-7	15 KEYS L free throw 2 - 2 made (4)
04:32	20 BROSSEAU J 3pt FG , jump shot missed			
04:28				15 KEYS L defensive rebound (2)
04:25	11 CHATZILEONTI I substitution out			
04:25	25 PRATER C substitution out			
04:25	1 STEPHENS T substitution in			
04:25	45 AJEKWU C substitution in			
04:19				15 KEYS L 3pt FG , jump shot missed
04:15	5 THOMAS A defensive rebound (7)			
04:07	15 FRANKLIN Z foul drawn (2)			21 ASBERRY J foul shooting (1 - 1)
04:07	15 FRANKLIN Z free throw 1 - 2 made (8)	27-33	-6	
04:07	15 FRANKLIN Z free throw 2 - 2 made (9)	28-33	-5	
03:56		28-35	-7	4 MACK N 2pt FG in the paint, layup made (13)
03:56				15 KEYS L assist (1)
03:44	1 STEPHENS T turnover lost ball (3)			21 ASBERRY J steal (2)
03:40		28-37	-9	21 ASBERRY J 2pt FG fast break from turnover outside the paint, pull up jump shot made (8)
03:40				23 FIELDS L assist (1)
03:26	1 STEPHENS T 2pt FG in the paint, layup blocked			



Game Time	KANSAS	Score	Diff	OKSTAT
03:26				4 MACK N block (3)
03:23				4 MACK N defensive rebound (13)
03:20				15 KEYS L 2pt FG outside the paint, jump shot missed
03:19				23 FIELDS L offensive rebound (5)
03:19	1 STEPHENS T foul personal (3 - 5)			23 FIELDS L foul drawn (4)
03:19	20 BROSSEAU J substitution out			
03:19	13 KERSGIETER H substitution in			
03:19		28-38	-10	23 FIELDS L free throw 1 - 2 made (12)
03:19				23 FIELDS L free throw 2 - 2 missed
03:17	45 AJEKWU C defensive rebound (9)			
03:05	15 FRANKLIN Z turnover bad pass (2)			4 MACK N steal (3)
02:59		28-41	-13	15 KEYS L 3pt FG fast break from turnover, jump shot made (7)
02:59				21 ASBERRY J assist (2)
02:59	Timeout 30 Sec			
02:38	1 STEPHENS T 2pt FG in the paint, layup missed			
02:35				15 KEYS L defensive rebound (3)
02:23		28-43	-15	4 MACK N 2pt FG in the paint, layup made (15)
02:06	13 KERSGIETER H 2pt FG in the paint, layup made (9)	30-43	-13	
02:06	13 KERSGIETER H foul drawn (5)			15 KEYS L foul shooting (2 - 2)
02:06	1 STEPHENS T substitution out			
02:06	11 CHATZILEONTI I substitution in			
02:06	13 KERSGIETER H free throw 1 - 1 made (10)	31-43	-12	
01:53				23 FIELDS L 3pt FG , jump shot missed
01:50	11 CHATZILEONTI I defensive rebound (4)			
01:40	45 AJEKWU C turnover bad pass (1)			4 MACK N steal (4)
01:31		31-45	-14	21 ASBERRY J 2pt FG from turnover outside the paint, jump shot made (10)
01:13	45 AJEKWU C 2pt FG in the paint, layup blocked			
01:13				4 MACK N block (4)
01:09				2 NOTOAN N defensive rebound (2)
01:07		31-47	-16	23 FIELDS L 2pt FG fast break in the paint, layup made (14)
01:07	15 FRANKLIN Z foul shooting (1 - 6)			23 FIELDS L foul drawn (5)
01:07	45 AJEKWU C substitution out			
01:07	1 STEPHENS T substitution in			
01:07	5 THOMAS A substitution out			
01:07	20 BROSSEAU J substitution in			
01:07				4 MACK N substitution out
01:07				1 DE LAPP K substitution in
01:07		31-48	-17	23 FIELDS L free throw fast break 1 - 1 made (15)
00:51	13 KERSGIETER H 2pt FG in the paint, layup missed			
00:48				1 DE LAPP K defensive rebound (6)
00:46		31-50	-19	21 ASBERRY J 2pt FG fast break outside the paint, pull up jump shot made (12)
00:27	13 KERSGIETER H turnover bad pass (2)			1 DE LAPP K steal (1)
00:00				23 FIELDS L 2pt FG from turnover in the paint, layup missed
00:00				offensive rebound (41)
END OF PERIOD				
KANSAS 31-50 OKSTAT				



Oklahoma St. at Kansas

01/30/21 Allen Fieldhouse, Lawrence
2020-21 Women's Basketball

Officials: Michael McConnell, Maj Forsberg, Bryan Enterline

Oklahoma St. - 28

NO.	Name	F	Min	FG			Rebounds			Fouls		TP	AS	TO	ST	Blocks		+/-
				M-A	3P	FT	OR	DR	TOT	PF	FD					BS	BA	
4	Natasha Mack	F	06:50	3-6	0-0	0-0	1	3	4	0	0	6	0	0	2	2	0	15
14	Taylen Collins	F	05:19	0-2	0-0	0-0	0	1	1	0	0	0	0	0	1	0	0	3
15	Lexy Keys	G	10:00	1-3	1-2	2-2	0	3	3	1	1	5	1	0	0	0	0	17
21	Ja'Mee Asberry	G	10:00	3-3	0-0	0-0	0	0	0	1	0	6	1	0	2	0	0	17
23	Lauren Fields	G	10:00	3-5	0-1	5-6	1	1	2	0	5	11	1	1	0	0	0	17
1	Kassidy De Lapp		03:10	0-1	0-0	0-0	0	1	1	0	0	0	1	0	1	0	0	2
2	Neferatali Notoa		04:41	0-0	0-0	0-0	0	1	1	0	0	0	0	0	0	0	0	14
Team							1	0	1			0		0				
Totals				10-20	1-3	7-8	3	10	13	2	6	28	4	1	6	2	0	17

Shooting By Period		
3rd FG%	10-20	50.0%
3PT%	1-3	33.3%
FT%	7-8	87.5%
GM FG%	10-20	50.0%
3PT%	1-3	33.3%
FT%	7-8	87.5%

Dead Ball Rebounds: 0, 0

Technical Fouls::NONE

Kansas - 11

NO.	Name	F	Min	FG			Rebounds			Fouls		TP	AS	TO	ST	Blocks		+/-
				M-A	3P	FT	OR	DR	TOT	PF	FD					BS	BA	
1	Tina Stephens	F	06:42	0-4	0-0	0-0	0	1	1	1	0	0	0	1	0	0	1	-13
45	Chisom Ajekwu	C	05:25	0-2	0-0	0-0	0	1	1	0	0	0	0	1	0	0	1	-9
5	Aniya Thomas	G	08:53	1-3	0-2	0-0	1	3	4	1	0	2	0	0	1	0	0	-14
13	Holly Kersgieter	G	06:35	1-3	0-1	1-1	0	1	1	2	1	3	0	1	0	0	0	-14
15	Zakiyah Franklin	G	10:00	1-2	0-1	2-2	0	0	0	1	1	4	1	1	0	0	0	-17
4	Mia Vuksic		00:00															
11	Ioanna Chatzileonti		05:34	1-1	0-0	0-0	0	1	1	0	0	2	0	1	0	0	0	-11
20	Julie Brosseau		04:32	0-1	0-1	0-0	0	0	0	1	0	0	0	1	0	0	0	-6
25	Chandler Prater		02:19	0-1	0-0	0-0	0	1	1	0	0	0	1	0	0	0	0	-1
Team							2	0	2			0		0				
Totals				4-17	0-5	3-3	3	8	11	6	2	11	2	6	1	0	2	-17

Shooting By Period		
3rd FG%	4-17	23.5%
3PT%	0-5	0.0%
FT%	3-3	100%
GM FG%	4-17	23.5%
3PT%	0-5	0.0%
FT%	3-3	100.0%

Dead Ball Rebounds: 0, 0

Technical Fouls::NONE

	OKSTAT	KANSAS
Biggest lead	19 (3 rd 0:46)	0 (1 st 10:00)
Best Scoring Run	10(3 rd 2:23)	4(3 rd 5:00)
Lead Changes	0	
Times Tied	0	
Time with Lead	09:48	00:00

	OKSTAT	KANSAS
Points from		
Turnovers	11	0
Paint	12	8
Second Chance	1	0
Fast Breaks	15	2
Bench	0	2

	Period by Period Scoring				
	1st	2nd	3rd	4th	TOT
OKSTAT	9	13	28	25	75
KANSAS	12	8	11	20	51



Oklahoma St. at Kansas

01/30/21 Allen Fieldhouse, Lawrence
2020-21 Women's Basketball

Officials: Michael McConnell, Maj Forsberg, Bryan Enterline

Period 4

Quarter Starters:

KANSAS	1 Stephens T	11 Chatzileonti I	13 Kersgieter H	15 Franklin Z	20 Brosseau J
OKSTAT	2 Notoa N	4 Mack N	15 Keys L	21 Asberry J	23 Fields L

Game Time	KANSAS	Score	Diff	OKSTAT
10:00				1 DE LAPP K substitution out
10:00				4 MACK N substitution in
09:49	20 BROSSEAU J 3pt FG , jump shot missed			
09:45				2 NOTOA N defensive rebound (3)
09:38		31-52	-21	23 FIELDS L 2pt FG in the paint, layup made (17)
09:38				21 ASBERRY J assist (3)
09:26	1 STEPHENS T substitution out			
09:26	4 VUKSIC M substitution in			
09:14	4 VUKSIC M 3pt FG , jump shot made (3)	34-52	-18	
09:14	15 FRANKLIN Z assist (2)			
09:03		34-54	-20	15 KEYS L 2pt FG outside the paint, pull up jump shot made (9)
08:43	13 KERSGIETER H 2pt FG outside the paint, pull up jump shot made (12)	36-54	-18	
08:31		36-56	-20	4 MACK N 2pt FG in the paint, layup made (17)
08:31				2 NOTOA N assist (2)
08:15	4 VUKSIC M turnover bad pass (1)			
08:06	11 CHATZILEONTI I foul personal (2 - 1)			4 MACK N foul drawn (4)
07:53				21 ASBERRY J 2pt FG from turnover in the paint, layup missed
07:49	13 KERSGIETER H defensive rebound (5)			
07:44	13 KERSGIETER H 2pt FG in the paint, layup blocked			
07:44				4 MACK N block (5)
07:41				21 ASBERRY J defensive rebound (2)
07:39	15 FRANKLIN Z foul shooting (2 - 2)			23 FIELDS L foul drawn (6)
07:39		36-57	-21	23 FIELDS L free throw fast break 1 - 2 made (18)
07:39		36-58	-22	23 FIELDS L free throw fast break 2 - 2 made (19)
07:31	4 VUKSIC M 3pt FG , jump shot missed			
07:28				4 MACK N defensive rebound (14)
07:22		36-60	-24	4 MACK N 2pt FG in the paint, layup made (19)
07:22				21 ASBERRY J assist (4)
07:08	11 CHATZILEONTI I foul drawn (1)			2 NOTOA N foul shooting (3 - 1)
07:08	11 CHATZILEONTI I free throw 1 - 2 made (5)	37-60	-23	
07:08	11 CHATZILEONTI I free throw 2 - 2 made (6)	38-60	-22	
07:08	Timeout 30 Sec			
06:52		38-62	-24	4 MACK N 2pt FG in the paint, turnaround jump shot made (21)
06:35	15 FRANKLIN Z 2pt FG in the paint, layup missed			
06:31	15 FRANKLIN Z offensive rebound (2)			
06:31	15 FRANKLIN Z 2pt FG second chance in the paint, layup missed			
06:30				2 NOTOA N defensive rebound (4)
06:22				4 MACK N 2pt FG in the paint, layup missed
06:19	13 KERSGIETER H defensive rebound (6)			
06:08	20 BROSSEAU J 3pt FG , jump shot made (3)	41-62	-21	
06:08	11 CHATZILEONTI I assist (1)			
05:51		41-64	-23	2 NOTOA N 2pt FG outside the paint, jump shot made (2)

**Oklahoma St. at Kansas**01/30/21 Allen Fieldhouse, Lawrence
2020-21 Women's Basketball

Officials: Michael McConnell, Maj Forsberg, Bryan Enterline

Game Time	KANSAS	Score	Diff	OKSTAT
05:51	4 VUKSIC M foul shooting (1 - 3)			2 NOTOAN foul drawn (1)
05:51	11 CHATZILEONTI I substitution out			
05:51	45 AJEKWU C substitution in			
05:51		41-65	-24	2 NOTOAN free throw 1 - 1 made (3)
05:43	15 FRANKLIN Z 2pt FG outside the paint, jump shot missed			
05:40				defensive rebound (46)
05:40	15 FRANKLIN Z substitution out			
05:40	21 MITCHELL B substitution in			
05:19		41-67	-26	23 FIELDS L 2pt FG in the paint, driving layup made (21)
04:52	4 VUKSIC M 3pt FG , jump shot blocked			
04:52				15 KEYS L block (2)
04:46				4 MACK N defensive rebound (15)
04:45		41-70	-29	21 ASBERRY J 3pt FG , jump shot made (15)
04:45				15 KEYS L assist (2)
04:26	45 AJEKWU C 2pt FG in the paint, layup blocked			
04:26				4 MACK N block (6)
04:22				21 ASBERRY J defensive rebound (3)
04:21	4 VUKSIC M foul shooting (2 - 4)			23 FIELDS L foul drawn (7)
04:21	4 VUKSIC M substitution out			
04:21	13 KERSGIETER H substitution out			
04:21	5 THOMAS A substitution in			
04:21	25 PRATER C substitution in			
04:21		41-71	-30	23 FIELDS L free throw 1 - 2 made (22)
04:21		41-72	-31	23 FIELDS L free throw 2 - 2 made (23)
04:10	45 AJEKWU C 2pt FG in the paint, layup missed			
04:07				4 MACK N defensive rebound (16)
04:03	5 THOMAS A foul drawn (1)			2 NOTOAN foul offensive (4 - 2)
04:03				2 NOTOAN turnover offensive (1)
03:49				4 MACK N substitution out
03:49				1 DE LAPP K substitution in
03:41	5 THOMAS A 3pt FG from turnover, jump shot made (5)	44-72	-28	
03:41	21 MITCHELL B assist (2)			
03:13				15 KEYS L 3pt FG , jump shot missed
03:09				2 NOTOAN offensive rebound (5)
02:51				1 DE LAPP K 2pt FG second chance in the paint, jump shot blocked
02:51	45 AJEKWU C block (2)			
02:47	25 PRATER C defensive rebound (4)			
02:37	21 MITCHELL B 3pt FG , jump shot made (3)	47-72	-25	
02:37	5 THOMAS A assist (1)			
02:13				1 DE LAPP K 2pt FG in the paint, layup missed
02:10	45 AJEKWU C defensive rebound (10)			
02:02	25 PRATER C 2pt FG in the paint, jump shot missed			
01:58				23 FIELDS L defensive rebound (6)
01:37				21 ASBERRY J 2pt FG in the paint, driving layup missed
01:33	5 THOMAS A defensive rebound (8)			
01:31	21 MITCHELL B foul drawn (1)			1 DE LAPP K foul shooting (1 - 3)
01:31				1 DE LAPP K substitution out
01:31				21 ASBERRY J substitution out



Oklahoma St. at Kansas

01/30/21 Allen Fieldhouse, Lawrence
2020-21 Women's Basketball

Officials: Michael McConnell, Maj Forsberg, Bryan Enterline

Game Time	KANSAS	Score	Diff	OKSTAT
01:31				23 FIELDS L substitution out
01:31				3 DENNIS M substitution in
01:31				25 WINCHESTER A substitution in
01:31				35 REEVES B substitution in
01:31	21 MITCHELL B free throw 1 - 2 missed			
01:31	offensive dead ball rebound (1)			
01:31	21 MITCHELL B free throw 2 - 2 made (4)	48-72	-24	
01:14	21 MITCHELL B foul personal (1 - 5)			2 NOTOAN N foul drawn (2)
01:14				2 NOTOAN N free throw 1 - 2 missed
01:14				offensive dead ball rebound (2)
01:14		48-73	-25	2 NOTOAN N free throw 2 - 2 made (4)
01:02	5 THOMAS A 3pt FG , jump shot made (8)	51-73	-22	
01:02	20 BROSSEAU J assist (1)			
00:43		51-75	-24	25 WINCHESTER A 2pt FG in the paint, layup made (2)
00:43				15 KEYS L assist (3)
00:21	21 MITCHELL B turnover bad pass (1)			2 NOTOAN N steal (1)
END OF GAME				
KANSAS 51-75 OKSTAT				



Oklahoma St. at Kansas

01/30/21 Allen Fieldhouse, Lawrence
2020-21 Women's Basketball

Officials: Michael McConnell, Maj Forsberg, Bryan Enterline

Oklahoma St. - 25

NO.	Name	F	Min	FG			Rebounds			Fouls		TP	AS	TO	ST	Blocks		+/-
				M-A	3P	FT	OR	DR	TOT	PF	FD					BS	BA	
4	Natasha Mack	F	06:11	3-4	0-0	0-0	0	3	3	0	1	6	0	0	0	2	0	12
14	Taylen Collins	F	00:00															
15	Lexy Keys	G	10:00	1-2	0-1	0-0	0	0	0	0	0	2	2	0	0	1	0	5
21	Ja'Mee Asberry	G	08:29	1-3	1-1	0-0	0	2	2	0	0	3	2	0	0	0	0	6
23	Lauren Fields	G	08:29	2-2	0-0	4-4	0	1	1	0	2	8	0	0	0	0	0	6
2	Neferatali Notoa		10:00	1-1	0-0	2-3	1	2	3	2	2	4	1	1	1	0	0	5
1	Kassidy De Lapp		02:18	0-2	0-0	0-0	0	0	0	1	0	0	0	0	0	0	1	-6
3	Micah Dennis		01:31	0-0	0-0	0-0	0	0	0	0	0	0	0	0	0	0	0	-1
25	Abbie Winchester		01:31	1-1	0-0	0-0	0	0	0	0	0	2	0	0	0	0	0	-1
35	Brittany Reeves		01:31	0-0	0-0	0-0	0	0	0	0	0	0	0	0	0	0	0	-1
Team							0	1	1			0		0				
Totals				9-15	1-2	6-7	1	9	10	3	5	25	5	1	1	3	1	5

Shooting By Period		
4 th FG%	9-15	60.0%
3PT%	1-2	50.0%
FT%	6-7	85.7%
GM FG%	9-15	60.0%
3PT%	1-2	50.0%
FT%	6-7	85.7%

Dead Ball Rebounds: 1, 0

Technical Fouls::NONE

Kansas - 20

NO.	Name	F	Min	FG			Rebounds			Fouls		TP	AS	TO	ST	Blocks		+/-
				M-A	3P	FT	OR	DR	TOT	PF	FD					BS	BA	
1	Tina Stephens	F	00:34	0-0	0-0	0-0	0	0	0	0	0	0	0	0	0	0	0	-2
45	Chisom Ajekwu	C	05:51	0-2	0-0	0-0	0	1	1	0	0	0	0	0	0	1	1	-1
5	Aniya Thomas	G	04:21	2-2	2-2	0-0	0	1	1	0	1	6	1	0	0	0	0	5
13	Holly Kersgieter	G	05:39	1-2	0-0	0-0	0	2	2	0	0	2	0	0	0	0	1	-10
15	Zakiyah Franklin	G	04:20	0-3	0-0	0-0	1	0	1	1	0	0	1	0	0	0	0	-5
11	Ioanna Chatzileonti		04:09	0-0	0-0	2-2	0	0	0	1	1	2	1	0	0	0	0	-4
20	Julie Brosseau		10:00	1-2	1-2	0-0	0	0	0	0	0	3	1	0	0	0	0	-5
4	Mia Vuksic		05:05	1-3	1-3	0-0	0	0	0	2	0	3	0	1	0	0	1	-8
21	Brooklyn Mitchell		05:40	1-1	1-1	1-2	0	0	0	1	1	4	1	1	0	0	0	0
25	Chandler Prater		04:21	0-1	0-0	0-0	0	1	1	0	0	0	0	0	0	0	0	5
Team							0	0	0			0		0				
Totals				6-16	5-8	3-4	1	5	6	5	3	20	5	2	0	1	3	-5

Shooting By Period		
4 th FG%	6-16	37.5%
3PT%	5-8	62.5%
FT%	3-4	75%
GM FG%	6-16	37.5%
3PT%	5-8	62.5%
FT%	3-4	75.0%

Dead Ball Rebounds: 1, 0

Technical Fouls::NONE

	OKSTAT	KANSAS
Biggest lead	31 (4 th 4:21)	0 (1 st 10:00)
Best Scoring Run	10(4 th 4:21)	7(4 th 1:31)
Lead Changes	0	
Times Tied	0	
Time with Lead	09:49	00:00

	OKSTAT	KANSAS
Points from		
Turnovers	0	3
Paint	12	0
Second Chance	0	0
Fast Breaks	2	0
Bench	6	12

Period by Period Scoring					
	1st	2nd	3rd	4th	TOT
OKSTAT	9	13	28	25	75
KANSAS	12	8	11	20	51



Oklahoma St. at Kansas

01/30/21 Allen Fieldhouse, Lawrence
2020-21 Women's Basketball

Officials: Michael McConnell, Maj Forsberg, Bryan Enterline

Oklahoma St. - 53

NO.	Name	Min	FG			Rebounds			Fouls		TP	AS	TO	ST	Blocks		+/-
			M-A	M-A	M-A	OR	DR	TOT	PF	FD					BS	BA	
4	Natasha Mack	F 13:01	6-10	0-0	0-0	1	6	7	0	1	12	0	0	2	4	0	27
14	Taylen Collins	F 05:19	0-2	0-0	0-0	0	1	1	0	0	0	0	0	1	0	0	3
15	Lexy Keys	G 20:00	2-5	1-3	2-2	0	3	3	1	1	7	3	0	0	1	0	22
21	Ja'Mee Asberry	G 18:29	4-6	1-1	0-0	0	2	2	1	0	9	3	0	2	0	0	23
23	Lauren Fields	G 18:29	5-7	0-1	9-10	1	2	3	0	7	19	1	1	0	0	0	23
1	Kassidy De Lapp	05:28	0-3	0-0	0-0	0	1	1	1	0	0	1	0	1	0	1	-4
2	Neferatali Notoa	14:41	1-1	0-0	2-3	1	3	4	2	2	4	1	1	1	0	0	19
3	Micah Dennis	01:31	0-0	0-0	0-0	0	0	0	0	0	0	0	0	0	0	0	-1
25	Abbie Winchester	01:31	1-1	0-0	0-0	0	0	0	0	0	2	0	0	0	0	0	-1
35	Brittany Reeves	01:31	0-0	0-0	0-0	0	0	0	0	0	0	0	0	0	0	0	-1
Team						1	1	2			0		0				
Totals			19-35	2-5	13-15	4	19	23	5	11	53	9	2	7	5	1	22

Shooting By Period		
3 rd FG%	10-20	50.0%
3PT%	1-3	33.3%
FT%	7-8	87.5%
4 th FG%	9-15	60.0%
3PT%	1-2	50.0%
FT%	6-7	85.7%
GM FG%	19-35	54.3%
3PT%	2-5	40.0%
FT%	13-15	86.7%

Dead Ball Rebounds: 1, 0

Technical Fouls::NONE

Kansas - 31

NO.	Name	Min	FG			Rebounds			Fouls		TP	AS	TO	ST	Blocks		+/-
			M-A	M-A	M-A	OR	DR	TOT	PF	FD					BS	BA	
1	Tina Stephens	F 07:16	0-4	0-0	0-0	0	1	1	1	0	0	0	1	0	0	1	-15
45	Chisom Ajekwu	C 11:16	0-4	0-0	0-0	0	2	2	0	0	0	0	1	0	1	2	-10
5	Aniya Thomas	G 13:14	3-5	2-4	0-0	1	4	5	1	1	8	1	0	1	0	0	-9
13	Holly Kersgieter	G 12:14	2-5	0-1	1-1	0	3	3	2	1	5	0	1	0	0	1	-24
15	Zakiyah Franklin	G 14:20	1-5	0-1	2-2	1	0	1	2	1	4	2	1	0	0	0	-22
11	Ioanna Chatzileonti	09:43	1-1	0-0	2-2	0	1	1	1	1	4	1	1	0	0	0	-15
20	Julie Brosseau	14:32	1-3	1-3	0-0	0	0	0	1	0	3	1	1	0	0	0	-11
25	Chandler Prater	06:40	0-2	0-0	0-0	0	2	2	0	0	0	1	0	0	0	0	4
4	Mia Vuksic	05:05	1-3	1-3	0-0	0	0	0	2	0	3	0	1	0	0	1	-8
21	Brooklyn Mitchell	05:40	1-1	1-1	1-2	0	0	0	1	1	4	1	1	0	0	0	0
Team						2	0	2			0		0				
Totals			10-33	5-13	6-7	4	13	17	11	5	31	7	8	1	1	5	-22

Shooting By Period		
3 rd FG%	4-17	23.5%
3PT%	0-5	0.0%
FT%	3-3	100%
4 th FG%	6-16	37.5%
3PT%	5-8	62.5%
FT%	3-4	75%
GM FG%	10-33	30.3%
3PT%	5-13	38.5%
FT%	6-7	85.7%

Dead Ball Rebounds: 1, 0

Technical Fouls::NONE

	OKSTAT	KANSAS
Biggest lead	31 (4 th 4:21)	0 (1 st 10:00)
Best Scoring Run	10(3 rd 2:23)	7(4 th 1:31)
Lead Changes	0	
Times Tied	0	
Time with Lead	19:48	00:00

	OKSTAT	KANSAS
Points from		
Turnovers	11	3
Paint	24	8
Second Chance	1	0
Fast Breaks	17	2
Bench	6	14

	Period by Period Scoring				
	1st	2nd	3rd	4th	TOT
OKSTAT	9	13	28	25	75
KANSAS	12	8	11	20	51



Oklahoma St. at Kansas

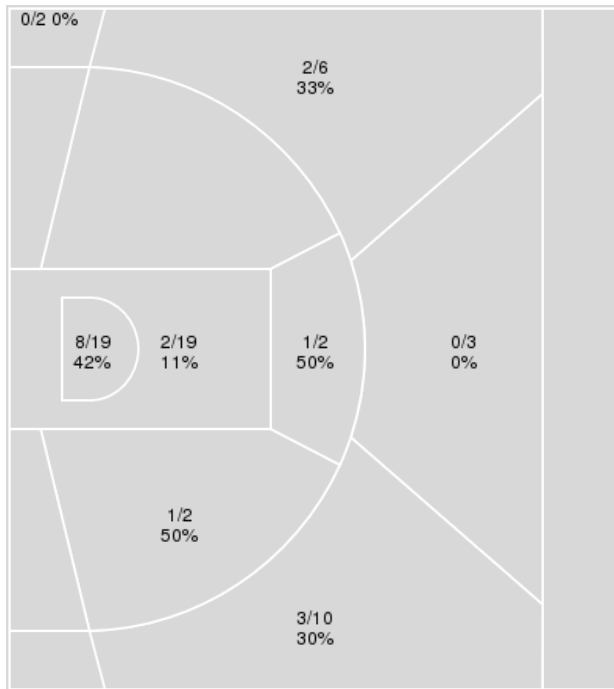
01/30/21 Allen Fieldhouse, Lawrence
2020-21 Women's Basketball

Officials: Michael McConnell, Maj Forsberg, Bryan Enterline

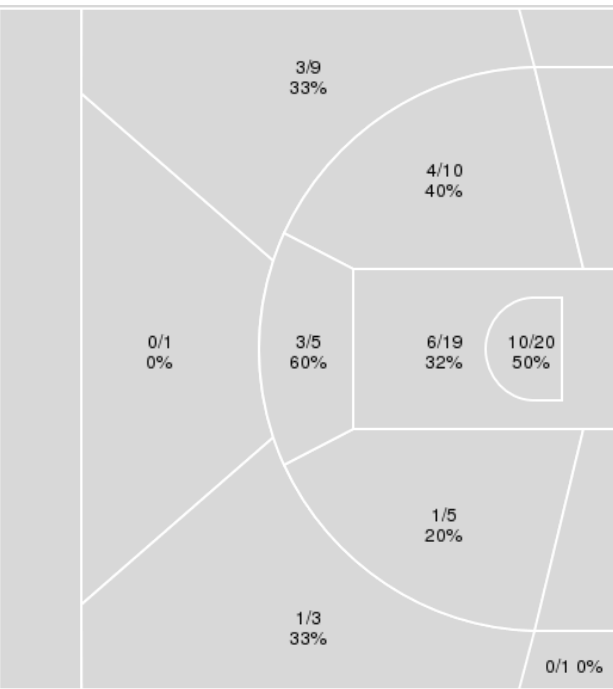
{ Players => 0, 1, 4, 5, 10, 11, 12, 13, 15, 20, 21, 25, 31, 35, 45; } FG
Types => All; Results => All;

{ Players => All; } FG Types => All; Results => All;

Kansas



Oklahoma St.



Kansas	M/A	%
Field Goals	17/63	27
2 Points	12/42	29
3 Points	5/21	24
Free Throws	12/15	80

Oklahoma St.	M/A	%
Field Goals	28/73	38
2 Points	24/59	41
3 Points	4/14	29
Free Throws	15/19	79



Oklahoma St. at Kansas

01/30/21 Allen Fieldhouse, Lawrence
2020-21 Women's Basketball

Officials: Michael McConnell, Maj Forsberg, Bryan Enterline

Oklahoma St.

No	Name	Mins		Score		Points Diff		Points per Min		Assists		Rebounds		Steals		Turnovers	
		On	Off	On	Off	On	Off	On	Off	On	Off	On	Off	On	Off	On	Off
1	Kassidy De Lapp	14:21	25:39	20 - 19	55 - 32	1	23	1.39	2.14	3	10	19	32	5	7	4	7
2	Neferatali Notoa	24:59	15:01	62 - 33	13 - 18	29	-5	2.48	0.87	12	1	32	19	7	5	5	6
3	Micah Dennis	03:51	36:09	5 - 7	70 - 44	-2	26	1.30	1.94	1	12	5	46	1	11	1	10
4	Natasha Mack	28:38	11:22	61 - 31	14 - 20	30	-6	2.13	1.23	11	2	37	14	8	4	8	3
11	Bigue Sarr	01:03	38:57	0 - 0	75 - 51	0	24	0.00	1.93	0	13	2	49	0	12	2	9
14	Taylen Collins	15:36	24:24	18 - 21	57 - 30	-3	27	1.15	2.34	2	11	19	32	4	8	9	2
15	Lexy Keys	31:38	08:22	69 - 41	6 - 10	28	-4	2.18	0.72	12	1	39	12	10	2	5	6
21	Ja'Mee Asberry	36:09	03:51	70 - 44	5 - 7	26	-2	1.94	1.30	12	1	46	5	11	1	10	1
23	Lauren Fields	32:25	07:35	60 - 43	15 - 8	17	7	1.85	1.98	9	4	41	10	10	2	9	2
25	Abbie Winchester	08:08	31:52	7 - 10	68 - 41	-3	27	0.86	2.13	2	11	10	41	3	9	2	9
35	Brittany Reeves	03:12	36:48	3 - 6	72 - 45	-3	27	0.94	1.96	1	12	5	46	1	11	0	11

Kansas

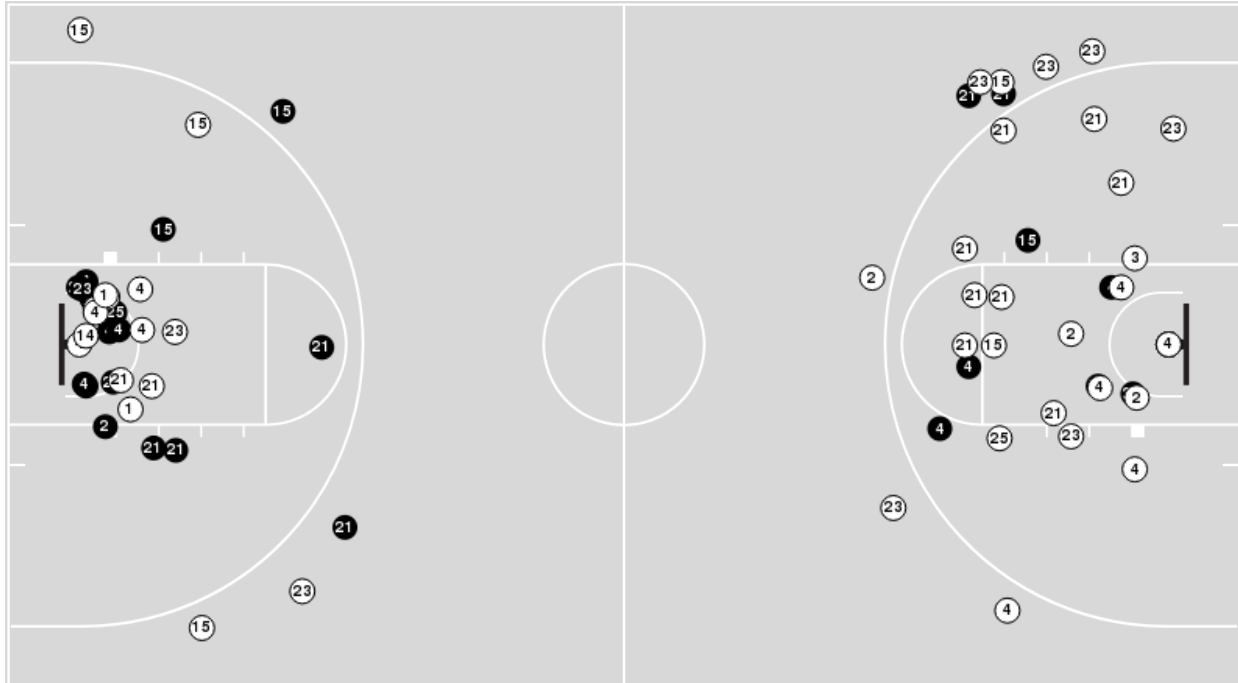
No	Name	Mins		Score		Points Diff		Points per Min		Assists		Rebounds		Steals		Turnovers	
		On	Off	On	Off	On	Off	On	Off	On	Off	On	Off	On	Off	On	Off
1	Tina Stephens	17:09	22:51	15 - 27	36 - 48	-12	-12	0.87	1.58	2	7	18	26	5	1	8	11
4	Mia Vuksic	07:28	32:32	12 - 25	39 - 50	-13	-11	1.61	1.20	2	7	7	37	0	6	3	16
5	Aniya Thomas	30:56	09:04	37 - 49	14 - 26	-12	-12	1.20	1.54	6	3	38	6	4	2	15	4
11	Ioanna Chatzileonti	21:05	18:55	27 - 47	24 - 28	-20	-4	1.28	1.27	5	4	20	24	1	5	12	7
13	Holly Kersgieter	29:21	10:39	33 - 55	18 - 20	-22	-2	1.12	1.69	4	5	33	11	6	0	11	8
15	Zakayah Franklin	29:52	10:08	37 - 59	14 - 16	-22	-2	1.24	1.38	4	5	36	8	3	3	14	5
20	Julie Brosseau	19:43	20:17	32 - 46	19 - 29	-14	-10	1.62	0.94	8	1	17	27	2	4	12	7
21	Brooklyn Mitchell	10:08	29:52	14 - 16	37 - 59	-2	-22	1.38	1.24	5	4	8	36	3	3	5	14
25	Chandler Prater	11:32	28:28	21 - 16	30 - 59	5	-29	1.82	1.05	5	4	14	30	1	5	5	14
45	Chisom Ajekwu	22:46	17:14	27 - 35	24 - 40	-8	-16	1.19	1.39	4	5	29	15	5	1	10	9



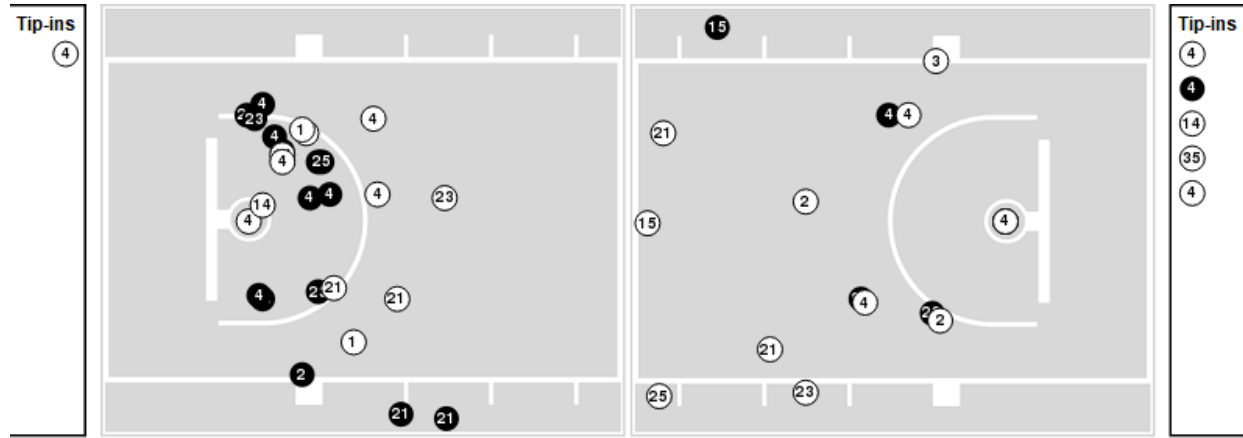
Officials: Michael McConnell, Maj Forsberg, Bryan Enterline

Players => AllFG Types=>AllResults=>All
Oklahoma St.

All Field Goals



Blow Up Chart



● Made ○ Missed N - Player Number

Oklahoma St.	M/A	%
Field Goals	28/73	38
2 Points	24/59	41
3 Points	4/14	29
Free Throws	15/19	79

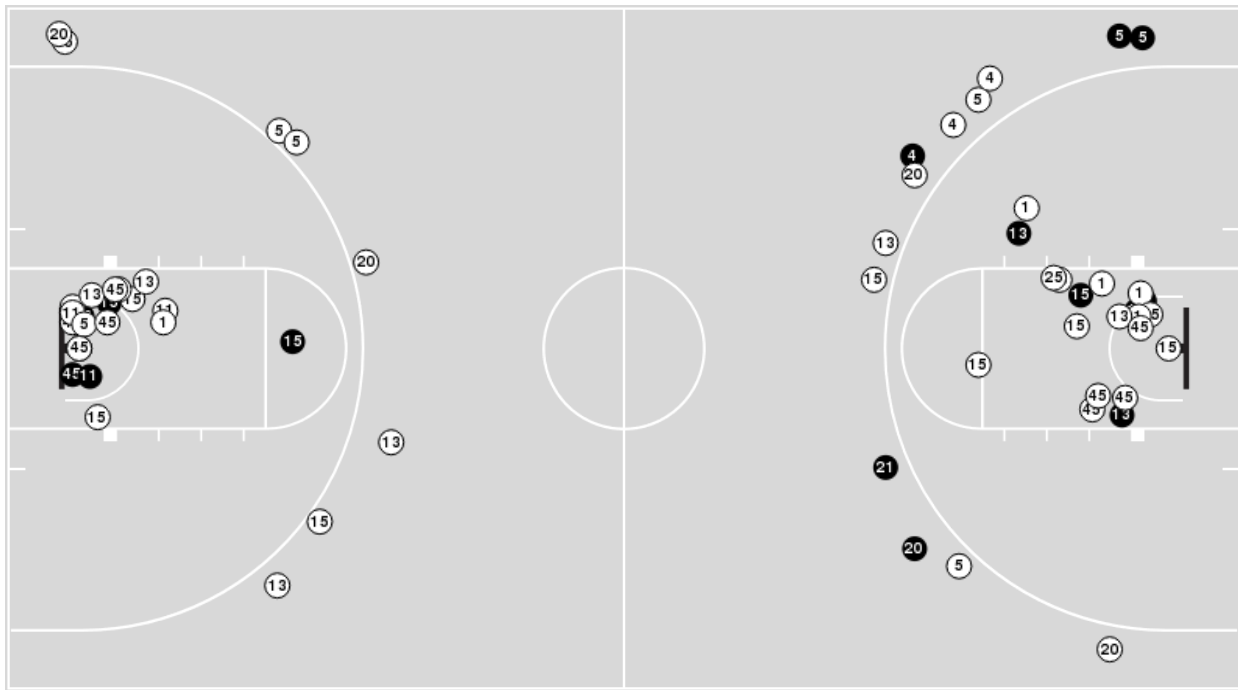
Oklahoma St.	M/A	%
Points in the Paint	32 (16 / 39)	41
Fast Break Points	17 (11/11)	100
Second Chance Points	5 (3/15)	20
Effective FG%	41	



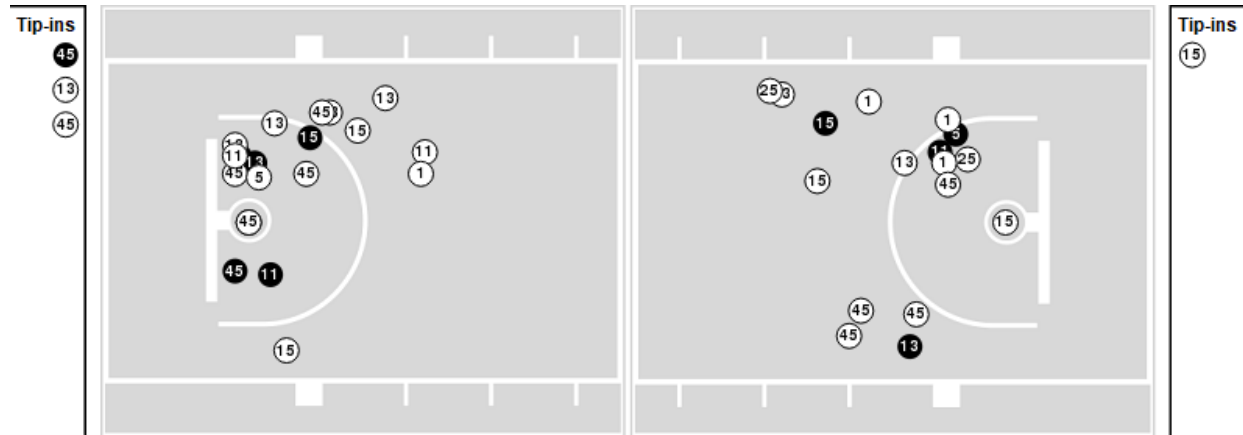
Players => 0, 1, 4, 5, 10, 11, 12, 13, 15, 20, 21, 25, 31, 35, 45FG Types=>AllResults=>All

Kansas

All Field Goals



Blow Up Chart



● Made ○ Missed N - Player Number

Kansas	M/A	%
Field Goals	17/63	27
2 Points	12/42	29
3 Points	5/21	24
Free Throws	12/15	80

Kansas	M/A	%
Points in the Paint	20 (10 / 38)	26
Fast Break Points	4 (2/2)	100
Second Chance Points	6 (4/12)	33
Effective FG%	31	



Oklahoma St. at Kansas

01/30/21 Allen Fieldhouse, Lawrence
2020-21 Women's Basketball

Officials: Michael McConnell, Maj Forsberg, Bryan Enterline

Oklahoma St.

Lineup	Quarter On	Time On	Quarter Off	Time Off	Time on Court	Score	Score Diff	Reb	Stl	Tov	Ass	PPP
4- Mack N/ 14- Collins T/ 15- Keys L/ 21- Asberry J/ 23- Fields L/	1	10:00	1	07:11	02:49	2-5	-3	2	1	1	0	0.3333
2- Notoa N/ 4- Mack N/ 14- Collins T/ 15- Keys L/ 21- Asberry J/	1	07:11	1	07:11	00:00	0-0	0	0	0	0	0	0.0000
1- De Lapp K/ 2- Notoa N/ 14- Collins T/ 15- Keys L/ 21- Asberry J/	1	07:11	1	05:35	01:36	3-2	1	2	0	1	0	1.0417
1- De Lapp K/ 2- Notoa N/ 15- Keys L/ 21- Asberry J/ 25- Winchester A/	1	05:35	1	05:32	00:03	0-0	0	1	0	0	0	0.0000
2- Notoa N/ 4- Mack N/ 15- Keys L/ 21- Asberry J/ 25- Winchester A/	1	05:32	1	04:20	01:12	2-0	2	1	0	0	1	1.0000
2- Notoa N/ 4- Mack N/ 21- Asberry J/ 23- Fields L/ 25- Winchester A/	1	04:20	1	04:02	00:18	0-0	0	0	0	0	0	0.0000
4- Mack N/ 14- Collins T/ 21- Asberry J/ 23- Fields L/ 25- Winchester A/	1	04:02	1	02:51	01:11	0-2	-2	0	1	2	0	0.0000
1- De Lapp K/ 11- Sarr B/ 14- Collins T/ 21- Asberry J/ 23- Fields L/	1	02:51	1	02:20	00:31	0-0	0	1	0	1	0	0.0000
1- De Lapp K/ 3- Dennis M/ 11- Sarr B/ 14- Collins T/ 23- Fields L/	1	02:20	1	01:48	00:32	0-0	0	1	0	1	0	0.0000
1- De Lapp K/ 3- Dennis M/ 4- Mack N/ 14- Collins T/ 23- Fields L/	1	01:48	1	01:35	00:13	0-2	-2	0	0	0	0	0.0000
1- De Lapp K/ 3- Dennis M/ 4- Mack N/ 15- Keys L/ 23- Fields L/	1	01:35	2	10:00	01:35	2-1	1	4	0	0	0	0.5000
1- De Lapp K/ 4- Mack N/ 15- Keys L/ 21- Asberry J/ 23- Fields L/	2	10:00	2	08:50	01:10	0-0	0	0	1	0	0	0.0000
2- Notoa N/ 4- Mack N/ 21- Asberry J/ 23- Fields L/ 25- Winchester A/	2	08:50	2	06:38	02:12	2-2	0	3	1	0	0	0.5000
2- Notoa N/ 21- Asberry J/ 23- Fields L/ 25- Winchester A/ 35- Reeves B/	2	06:38	2	06:38	00:00	0-0	0	0	0	0	0	0.0000
14- Collins T/ 21- Asberry J/ 23- Fields L/ 25- Winchester A/ 35- Reeves B/	2	06:38	2	04:57	01:41	0-2	-2	5	0	0	0	0.0000
2- Notoa N/ 4- Mack N/ 14- Collins T/ 21- Asberry J/ 23- Fields L/	2	04:57	2	03:13	01:44	4-2	2	2	0	2	1	1.3889
1- De Lapp K/ 2- Notoa N/ 4- Mack N/ 15- Keys L/ 21- Asberry J/	2	03:13	3	10:00	03:13	7-2	5	6	1	1	2	1.1667
4- Mack N/ 14- Collins T/ 15- Keys L/ 21- Asberry J/ 23- Fields L/	3	10:00	3	06:44	03:16	4-0	4	6	0	1	0	0.6667
1- De Lapp K/ 14- Collins T/ 15- Keys L/ 21- Asberry J/ 23- Fields L/	3	06:44	3	04:41	02:03	5-6	-1	0	2	0	1	1.1574
2- Notoa N/ 4- Mack N/ 15- Keys L/ 21- Asberry J/ 23- Fields L/	3	04:41	3	01:07	03:34	16-5	11	5	3	0	3	1.6393
1- De Lapp K/ 2- Notoa N/ 15- Keys L/ 21- Asberry J/ 23- Fields L/	3	01:07	4	10:00	01:07	3-0	3	2	1	0	0	2.0833
2- Notoa N/ 4- Mack N/ 15- Keys L/ 21- Asberry J/ 23- Fields L/	4	10:00	4	03:49	06:11	22-10	12	8	0	1	4	1.6667
1- De Lapp K/ 2- Notoa N/ 15- Keys L/ 21- Asberry J/ 23- Fields L/	4	03:49	4	01:31	02:18	0-6	-6	2	0	0	0	0.0000
2- Notoa N/ 3- Dennis M/ 15- Keys L/ 25- Winchester A/ 35- Reeves B/	4	01:31	4	00:00	01:31	3-4	-1	0	1	0	1	1.5957



Oklahoma St. at Kansas

01/30/21 Allen Fieldhouse, Lawrence
2020-21 Women's Basketball

Game Time: 4:00 PM
Game Duration: 1:47

Officials: Michael McConnell, Maj Forsberg, Bryan Enterline

Kansas

Lineup	Quarter On	Time On	Quarter Off	Time Off	Time on Court	Score	Score Diff	Reb	Stl	Tov	Ass	PPP
1- Stephens T/ 5- Thomas A/ 13- Kersgieter H/ 15- Franklin Z/ 45- Ajekwu C/	1	10:00	1	07:11	02:49	5-2	3	7	0	2	0	1.0246
1- Stephens T/ 5- Thomas A/ 11- Chatzileonti I/ 13- Kersgieter H/ 15- Franklin Z/	1	07:11	1	06:16	00:55	2-1	1	0	0	0	0	1.0638
4- Vuksic M/ 5- Thomas A/ 11- Chatzileonti I/ 13- Kersgieter H/ 15- Franklin Z/	1	06:16	1	05:35	00:41	0-2	-2	1	0	0	0	0.0000
4- Vuksic M/ 5- Thomas A/ 11- Chatzileonti I/ 13- Kersgieter H/ 21- Mitchell B/	1	05:35	1	05:32	00:03	0-0	0	1	0	0	0	0.0000
4- Vuksic M/ 5- Thomas A/ 11- Chatzileonti I/ 20- Brosseau J/ 21- Mitchell B/	1	05:32	1	05:00	00:32	0-2	-2	0	0	1	0	0.0000
1- Stephens T/ 5- Thomas A/ 20- Brosseau J/ 21- Mitchell B/ 45- Ajekwu C/	1	05:00	1	04:02	00:58	0-0	0	2	0	1	0	0.0000
1- Stephens T/ 13- Kersgieter H/ 20- Brosseau J/ 21- Mitchell B/ 45- Ajekwu C/	1	04:02	1	02:51	01:11	2-0	2	1	2	1	1	1.0000
1- Stephens T/ 5- Thomas A/ 13- Kersgieter H/ 15- Franklin Z/ 45- Ajekwu C/	1	02:51	1	02:20	00:31	0-0	0	0	1	0	0	0.0000
5- Thomas A/ 13- Kersgieter H/ 15- Franklin Z/ 25- Prater C/ 45- Ajekwu C/	1	02:20	2	10:00	02:20	3-2	1	5	1	0	0	0.6303
1- Stephens T/ 5- Thomas A/ 11- Chatzileonti I/ 13- Kersgieter H/ 15- Franklin Z/	2	10:00	2	09:38	00:22	0-0	0	0	0	1	0	0.0000
5- Thomas A/ 11- Chatzileonti I/ 13- Kersgieter H/ 15- Franklin Z/ 25- Prater C/	2	09:38	2	08:01	01:37	2-0	2	2	0	1	0	1.0000
5- Thomas A/ 11- Chatzileonti I/ 15- Franklin Z/ 20- Brosseau J/ 25- Prater C/	2	08:01	2	07:37	00:24	0-0	0	1	0	1	0	0.0000
5- Thomas A/ 15- Franklin Z/ 20- Brosseau J/ 25- Prater C/ 45- Ajekwu C/	2	07:37	2	07:06	00:31	0-2	-2	0	0	0	0	0.0000
5- Thomas A/ 11- Chatzileonti I/ 15- Franklin Z/ 20- Brosseau J/ 45- Ajekwu C/	2	07:06	2	06:38	00:28	0-0	0	1	0	1	0	0.0000
5- Thomas A/ 11- Chatzileonti I/ 13- Kersgieter H/ 15- Franklin Z/ 45- Ajekwu C/	2	06:38	2	04:57	01:41	2-0	2	2	0	0	0	1.0000
5- Thomas A/ 11- Chatzileonti I/ 13- Kersgieter H/ 21- Mitchell B/ 45- Ajekwu C/	2	04:57	2	04:14	00:43	0-3	-3	1	0	1	0	0.0000
1- Stephens T/ 5- Thomas A/ 13- Kersgieter H/ 21- Mitchell B/ 45- Ajekwu C/	2	04:14	2	03:56	00:18	0-1	-1	0	0	0	0	0.0000
1- Stephens T/ 5- Thomas A/ 11- Chatzileonti I/ 13- Kersgieter H/ 21- Mitchell B/	2	03:56	2	03:13	00:43	2-0	2	0	1	0	1	2.0000
1- Stephens T/ 5- Thomas A/ 11- Chatzileonti I/ 13- Kersgieter H/ 15- Franklin Z/	2	03:13	2	01:07	02:06	0-4	-4	1	0	0	0	0.0000
4- Vuksic M/ 11- Chatzileonti I/ 13- Kersgieter H/ 15- Franklin Z/ 20- Brosseau J/	2	01:07	3	10:00	01:07	2-3	-1	2	0	1	0	1.0000
1- Stephens T/ 5- Thomas A/ 13- Kersgieter H/ 15- Franklin Z/ 45- Ajekwu C/	3	10:00	3	07:53	02:07	0-0	0	4	1	0	0	0.0000
1- Stephens T/ 5- Thomas A/ 11- Chatzileonti I/ 13- Kersgieter H/ 15- Franklin Z/	3	07:53	3	06:44	01:09	0-4	-4	1	0	0	0	0.0000
5- Thomas A/ 11- Chatzileonti I/ 15- Franklin Z/ 20- Brosseau J/ 25- Prater C/	3	06:44	3	04:25	02:19	6-7	-1	3	0	2	2	1.0000
1- Stephens T/ 5- Thomas A/ 15- Franklin Z/ 20- Brosseau J/ 45- Ajekwu C/	3	04:25	3	03:19	01:06	2-4	-2	1	0	1	0	0.6944
1- Stephens T/ 5- Thomas A/ 13- Kersgieter H/ 15- Franklin Z/ 45- Ajekwu C/	3	03:19	3	02:06	01:13	2-6	-4	1	0	1	0	0.6667
5- Thomas A/ 11- Chatzileonti I/ 13- Kersgieter H/ 15- Franklin Z/ 45- Ajekwu C/	3	02:06	3	01:07	00:59	1-4	-3	1	0	1	0	0.4098
1- Stephens T/ 5- Thomas A/ 11- Chatzileonti I/ 13- Kersgieter H/ 15- Franklin Z/	3	01:07	3	01:07	00:00	0-0	0	0	0	0	0	0.0000
1- Stephens T/ 11- Chatzileonti I/ 13- Kersgieter H/ 15- Franklin Z/ 20- Brosseau J/	3	01:07	4	09:26	01:41	0-5	-5	0	0	1	0	0.0000
4- Vuksic M/ 11- Chatzileonti I/ 13- Kersgieter H/ 15- Franklin Z/ 20- Brosseau J/	4	09:26	4	05:51	03:35	10-12	-2	3	0	1	2	1.2690
4- Vuksic M/ 13- Kersgieter H/ 15- Franklin Z/ 20- Brosseau J/ 45- Ajekwu C/	4	05:51	4	05:40	00:11	0-1	-1	0	0	0	0	0.0000
4- Vuksic M/ 13- Kersgieter H/ 20- Brosseau J/ 21- Mitchell B/ 45- Ajekwu C/	4	05:40	4	04:21	01:19	0-5	-5	0	0	0	0	0.0000
5- Thomas A/ 20- Brosseau J/ 21- Mitchell B/ 25- Prater C/ 45- Ajekwu C/	4	04:21	4	00:00	04:21	10-5	5	3	0	1	3	1.4535



Oklahoma St. at Kansas

01/30/21 Allen Fieldhouse, Lawrence
2020-21 Women's Basketball

Officials: Michael McConnell, Maj Forsberg, Bryan Enterline

Oklahoma St.

Lineup	Time	Score	Score Diff	Pts/Min	Reb	Stl	Tov	Ass	PPP
2- Notoa N/ 4- Mack N/ 15- Keys L/ 21- Asberry J/ 23- Fields L/	09:45	38-15	23	3.8974	13	3	1	7	1.6551
4- Mack N/ 14- Collins T/ 15- Keys L/ 21- Asberry J/ 23- Fields L/	06:05	6-5	1	0.9863	8	1	2	0	0.5000
1- De Lapp K/ 2- Notoa N/ 15- Keys L/ 21- Asberry J/ 23- Fields L/	03:25	3-6	-3	0.8780	4	1	0	0	0.6757
1- De Lapp K/ 2- Notoa N/ 4- Mack N/ 15- Keys L/ 21- Asberry J/	03:13	7-2	5	2.1762	6	1	1	2	1.1667
2- Notoa N/ 4- Mack N/ 21- Asberry J/ 23- Fields L/ 25- Winchester A/	02:30	2-2	0	0.8000	3	1	0	0	0.4000
1- De Lapp K/ 14- Collins T/ 15- Keys L/ 21- Asberry J/ 23- Fields L/	02:03	5-6	-1	2.4390	0	2	0	1	1.1574
2- Notoa N/ 4- Mack N/ 14- Collins T/ 21- Asberry J/ 23- Fields L/	01:44	4-2	2	2.3077	2	0	2	1	1.3889
14- Collins T/ 21- Asberry J/ 23- Fields L/ 25- Winchester A/ 35- Reeves B/	01:41	0-2	-2	0.0000	5	0	0	0	0.0000
1- De Lapp K/ 2- Notoa N/ 14- Collins T/ 15- Keys L/ 21- Asberry J/	01:36	3-2	1	1.8750	2	0	1	0	1.0417
1- De Lapp K/ 3- Dennis M/ 4- Mack N/ 15- Keys L/ 23- Fields L/	01:35	2-1	1	1.2632	4	0	0	0	0.5000
2- Notoa N/ 3- Dennis M/ 15- Keys L/ 25- Winchester A/ 35- Reeves B/	01:31	3-4	-1	1.9780	0	1	0	1	1.5957
2- Notoa N/ 4- Mack N/ 15- Keys L/ 21- Asberry J/ 25- Winchester A/	01:12	2-0	2	1.6667	1	0	0	1	1.0000
4- Mack N/ 14- Collins T/ 21- Asberry J/ 23- Fields L/ 25- Winchester A/	01:11	0-2	-2	0.0000	0	1	2	0	0.0000
1- De Lapp K/ 4- Mack N/ 15- Keys L/ 21- Asberry J/ 23- Fields L/	01:10	0-0	0	0.0000	0	1	0	0	0.0000
1- De Lapp K/ 3- Dennis M/ 11- Sarr B/ 14- Collins T/ 23- Fields L/	00:32	0-0	0	0.0000	1	0	1	0	0.0000
1- De Lapp K/ 11- Sarr B/ 14- Collins T/ 21- Asberry J/ 23- Fields L/	00:31	0-0	0	0.0000	1	0	1	0	0.0000
1- De Lapp K/ 3- Dennis M/ 4- Mack N/ 14- Collins T/ 23- Fields L/	00:13	0-2	-2	0.0000	0	0	0	0	0.0000
1- De Lapp K/ 2- Notoa N/ 15- Keys L/ 21- Asberry J/ 25- Winchester A/	00:03	0-0	0	0.0000	1	0	0	0	0.0000
2- Notoa N/ 4- Mack N/ 14- Collins T/ 15- Keys L/ 21- Asberry J/	00:00	0-0	0	NaN	0	0	0	0	0.0000
2- Notoa N/ 21- Asberry J/ 23- Fields L/ 25- Winchester A/ 35- Reeves B/	00:00	0-0	0	NaN	0	0	0	0	0.0000



Oklahoma St. at Kansas

01/30/21 Allen Fieldhouse, Lawrence
2020-21 Women's Basketball

Officials: Michael McConnell, Maj Forsberg, Bryan Enterline

Kansas

Lineup	Time	Score	Score Diff	Pts/Min	Reb	Stl	Tov	Ass	PPP
1- Stephens T/ 5- Thomas A/ 13- Kersgieter H/ 15- Franklin Z/ 45- Ajekwu C/	06:40	7-8	-1	1.0500	12	2	3	0	0.5892
4- Vuksic M/ 11- Chatzileonti I/ 13- Kersgieter H/ 15- Franklin Z/ 20- Brosseau J/	04:42	12-15	-3	2.5532	5	0	2	2	1.2146
1- Stephens T/ 5- Thomas A/ 11- Chatzileonti I/ 13- Kersgieter H/ 15- Franklin Z/	04:32	2-9	-7	0.4412	2	0	1	0	0.2252
5- Thomas A/ 20- Brosseau J/ 21- Mitchell B/ 25- Prater C/ 45- Ajekwu C/	04:21	10-5	5	2.2989	3	0	1	3	1.4535
5- Thomas A/ 11- Chatzileonti I/ 15- Franklin Z/ 20- Brosseau J/ 25- Prater C/	02:43	6-7	-1	2.2086	4	0	3	2	0.8571
5- Thomas A/ 11- Chatzileonti I/ 13- Kersgieter H/ 15- Franklin Z/ 45- Ajekwu C/	02:40	3-4	-1	1.1250	3	0	1	0	0.6757
5- Thomas A/ 13- Kersgieter H/ 15- Franklin Z/ 25- Prater C/ 45- Ajekwu C/	02:20	3-2	1	1.2857	5	1	0	0	0.6303
1- Stephens T/ 11- Chatzileonti I/ 13- Kersgieter H/ 15- Franklin Z/ 20- Brosseau J/	01:41	0-5	-5	0.0000	0	0	1	0	0.0000
5- Thomas A/ 11- Chatzileonti I/ 13- Kersgieter H/ 15- Franklin Z/ 25- Prater C/	01:37	2-0	2	1.2371	2	0	1	0	1.0000
4- Vuksic M/ 13- Kersgieter H/ 20- Brosseau J/ 21- Mitchell B/ 45- Ajekwu C/	01:19	0-5	-5	0.0000	0	0	0	0	0.0000
1- Stephens T/ 13- Kersgieter H/ 20- Brosseau J/ 21- Mitchell B/ 45- Ajekwu C/	01:11	2-0	2	1.6901	1	2	1	1	1.0000
1- Stephens T/ 5- Thomas A/ 15- Franklin Z/ 20- Brosseau J/ 45- Ajekwu C/	01:06	2-4	-2	1.8182	1	0	1	0	0.6944
1- Stephens T/ 5- Thomas A/ 20- Brosseau J/ 21- Mitchell B/ 45- Ajekwu C/	00:58	0-0	0	0.0000	2	0	1	0	0.0000
5- Thomas A/ 11- Chatzileonti I/ 13- Kersgieter H/ 21- Mitchell B/ 45- Ajekwu C/	00:43	0-3	-3	0.0000	1	0	1	0	0.0000
1- Stephens T/ 5- Thomas A/ 11- Chatzileonti I/ 13- Kersgieter H/ 21- Mitchell B/	00:43	2-0	2	2.7907	0	1	0	1	2.0000
4- Vuksic M/ 5- Thomas A/ 11- Chatzileonti I/ 13- Kersgieter H/ 15- Franklin Z/	00:41	0-2	-2	0.0000	1	0	0	0	0.0000
4- Vuksic M/ 5- Thomas A/ 11- Chatzileonti I/ 20- Brosseau J/ 21- Mitchell B/	00:32	0-2	-2	0.0000	0	0	1	0	0.0000
5- Thomas A/ 15- Franklin Z/ 20- Brosseau J/ 25- Prater C/ 45- Ajekwu C/	00:31	0-2	-2	0.0000	0	0	0	0	0.0000
5- Thomas A/ 11- Chatzileonti I/ 15- Franklin Z/ 20- Brosseau J/ 45- Ajekwu C/	00:28	0-0	0	0.0000	1	0	1	0	0.0000
1- Stephens T/ 5- Thomas A/ 13- Kersgieter H/ 21- Mitchell B/ 45- Ajekwu C/	00:18	0-1	-1	0.0000	0	0	0	0	0.0000
4- Vuksic M/ 13- Kersgieter H/ 15- Franklin Z/ 20- Brosseau J/ 45- Ajekwu C/	00:11	0-1	-1	0.0000	0	0	0	0	0.0000
4- Vuksic M/ 5- Thomas A/ 11- Chatzileonti I/ 13- Kersgieter H/ 21- Mitchell B/	00:03	0-0	0	0.0000	1	0	0	0	0.0000