



**Emporia St. at Kansas**

11/03/21 Allen Fieldhouse, Lawrence  
2021-22 Men's Basketball

Game Time: 7:00 PM  
Game Duration: 1:44  
Attendance: 16,200

Officials: Kipp Kissinger, Brooks Wells, Amy Bonner

Emporia St. - 60

Record: 0-0

NO.	Name	C	Min	FG	3P	FT	Rebounds			Fouls		TP	AS	TO	ST	Blocks		+/-
				M-A	M-A	M-A	OR	DR	TOT	PF	FD					BS	BA	
0	Mayuom Buom	C	24:12	6-10	1-2	1-3	3	3	6	1	2	14	1	1	0	0	1	-16
30	Mason Thiessen	C	19:21	0-0	0-0	0-0	0	4	4	2	0	0	0	0	0	3	0	-8
2	Tray Buchanan	G	22:36	4-11	0-3	11-11	0	3	3	5	6	19	1	4	1	0	0	-3
4	Kaden Evans	G	31:17	0-5	0-4	0-0	0	3	3	0	1	0	1	2	4	0	1	-30
5	Jumah'Ri Turner	G	28:40	5-17	1-4	2-3	1	4	5	0	3	13	1	1	1	1	2	-20
14	Gage McGuire		16:18	2-5	0-0	0-0	2	2	4	2	0	4	0	1	0	1	1	-6
23	Adam Nance		13:15	2-3	2-2	0-0	0	2	2	0	2	6	0	1	0	0	1	-5
1	Peyton Rogers-Schmidt		11:56	1-1	0-0	0-0	0	1	1	1	1	2	0	0	0	0	0	-14
3	Brooks Haddock		16:05	0-4	0-4	0-0	0	2	2	0	0	0	2	0	0	0	0	-17
12	Marquis McCray		09:24	1-4	0-1	0-0	0	3	3	1	1	2	1	3	0	0	1	-7
20	PJ Johnson		02:49	0-0	0-0	0-0	0	0	0	1	0	0	0	0	0	0	0	-6
22	Gabe Collins		02:39	0-1	0-0	0-0	0	0	0	0	1	0	0	0	0	0	0	1
32	Kabeya Tshibangu		01:28	0-0	0-0	0-0	0	0	0	0	0	0	0	0	0	0	0	1
Team							1	0	1			0		1				
<b>Totals</b>				21-61	4-20	14-17	7	27	34	13	17	60	7	14	6	5	7	-26

Shooting By Period		
1st FG%	10-29	34.5%
3PT%	2-8	25.0%
FT%	3-3	100%
2nd FG%	11-32	34.4%
3PT%	2-12	16.7%
FT%	11-14	78.6%
GM FG%	21-61	34.4%
3PT%	4-20	20.0%
FT%	14-17	82.4%

Dead Ball Rebounds: 1, 0

Technical Fouls::NONE

Kansas - 86

Record: 0-0

NO.	Name	C	Min	FG	3P	FT	Rebounds			Fouls		TP	AS	TO	ST	Blocks		+/-
				M-A	M-A	M-A	OR	DR	TOT	PF	FD					BS	BA	
33	David McCormack	F	15:00	5-8	0-0	6-6	2	6	8	1	4	16	1	0	1	2	1	20
2	Christian Braun	G	24:01	4-10	2-6	0-0	0	3	3	1	0	10	3	1	1	1	0	17
3	Dajuan Harris	G	22:14	3-3	0-0	0-0	0	1	1	1	0	6	2	2	1	0	0	13
12	Chris Teahan	G	06:43	0-0	0-0	0-0	0	1	1	1	0	0	0	0	0	0	0	0
30	Ochai Agbaji	G	23:19	6-12	5-7	0-0	0	7	7	0	0	17	2	0	2	0	1	22
1	Joseph Yesufu		20:50	2-7	0-0	0-0	1	0	1	2	1	4	3	1	3	0	1	8
44	Mitch Lightfoot		07:46	1-4	1-1	2-2	4	1	5	0	2	5	0	1	0	2	0	7
11	Remy Martin		18:04	7-10	1-2	0-0	0	2	2	3	1	15	4	1	1	0	0	22
21	Zach Clemence		09:34	2-2	0-0	0-0	0	4	4	3	0	4	0	1	0	1	0	-2
0	Bobby Pettiford		20:19	1-4	0-1	1-1	0	4	4	1	1	3	2	0	0	0	0	12
31	Cam Martin		07:40	0-2	0-1	0-0	1	3	4	1	3	0	0	1	1	1	1	1
24	KJ Adams, Jr.		14:10	1-3	0-0	0-0	0	1	1	0	0	2	1	0	0	0	1	13
5	Kyle Cuffe, Jr.		06:41	1-3	0-2	0-0	0	0	0	2	0	2	0	2	0	0	0	-3
20	Michael Jankovich		03:39	0-2	0-2	2-2	0	1	1	1	1	2	0	0	0	0	0	0
Team							2	1	3			0		0				
<b>Totals</b>				33-70	9-22	11-11	10	35	45	17	13	86	18	10	10	7	5	26

Shooting By Period		
1st FG%	21-34	61.8%
3PT%	6-10	60.0%
FT%	3-3	100%
2nd FG%	12-36	33.3%
3PT%	3-12	25.0%
FT%	8-8	100%
GM FG%	33-70	47.1%
3PT%	9-22	40.9%
FT%	11-11	100.0%

Dead Ball Rebounds: 0, 0

Technical Fouls::NONE

	ESU	Kan
Biggest lead	2 (1st 19:24)	36 (2nd 10:19)
Best Scoring Run	8 (2nd 9:16)	11 (1st 1:27)
Lead Changes	5	
Times Tied	0	
Time with Lead	02:12	37:12

Points from	ESU	Kan
Turnovers	10	20
Paint	30	42
Second Chance	4	7
Fast Breaks	0	15
Bench	14	37

	Period by Period Scoring		
	1st	2nd	TOT
ESU	25	35	60
Kan	51	35	86



## Period 1

## Quarter Starters:

Kan	2 Braun C	3 Harris D	12 Teahan C	30 Agbaji O	33 McCormack D
ESU	0 Buom M	2 Buchanan T	4 Evans K	5 Turner J	30 Thiessen M

Game Time	Kan	Score	Diff	ESU
20:00	33 MCCORMACK D jumpball won			0 BUOM M jumpball lost
19:47	33 MCCORMACK D 2pt FG in the paint, hook shot missed			
19:41				5 TURNER J defensive rebound (1)
19:24		0-2	-2	0 BUOM M 2pt FG in the paint, layup made (2)
19:09	33 MCCORMACK D foul drawn (1)			30 THIESEN M foul personal (1 - 1)
18:56	33 MCCORMACK D 2pt FG in the paint, layup blocked			
18:56				30 THIESEN M block (1)
18:51				30 THIESEN M defensive rebound (1)
18:49				5 TURNER J 2pt FG in the paint, hook shot missed
18:44	12 TEAHAN C defensive rebound (1)			
18:33	30 AGBAJI O 3pt FG , jump shot missed			
18:29				30 THIESEN M defensive rebound (2)
18:18				2 BUCHANAN T turnover travel (1)
18:06	2 BRAUN C 3pt FG from turnover, jump shot missed			
18:02	33 MCCORMACK D offensive rebound (1)			
18:01	30 AGBAJI O 3pt FG from turnover second chance, jump shot made (3)	3-2	1	
18:01	33 MCCORMACK D assist (1)			
17:42				2 BUCHANAN T 3pt FG , jump shot missed
17:38	30 AGBAJI O defensive rebound (1)			
17:30	33 MCCORMACK D 2pt FG in the paint, hook shot made (2)	5-2	3	
17:17	2 BRAUN C steal (1)			2 BUCHANAN T turnover bad pass (2)
17:12	2 BRAUN C turnover lost ball (1)			5 TURNER J steal (1)
16:53				4 EVANS K turnover out of bounds (1)
16:39	2 BRAUN C 3pt FG from turnover, jump shot made (3)	8-2	6	
16:39	3 HARRIS D assist (1)			
16:16		8-4	4	0 BUOM M 2pt FG in the paint, layup made (4)
16:16	33 MCCORMACK D foul shooting (1 - 1)			0 BUOM M foul drawn (1)
16:16		8-5	3	0 BUOM M free throw 1 - 1 made (5)
16:05	2 BRAUN C 2pt FG in the paint, layup missed			
16:02				0 BUOM M defensive rebound (1)
15:58	2 BRAUN C foul shooting (1 - 2)			2 BUCHANAN T foul drawn (1)
15:58	Timeout media			
15:58	12 TEAHAN C substitution out			
15:58	33 MCCORMACK D substitution out			
15:58	1 YESUFU J substitution in			
15:58	44 LIGHTFOOT M substitution in			
15:58				0 BUOM M substitution out
15:58				30 THIESEN M substitution out
15:58				14 MCGUIRE G substitution in
15:58				23 NANCE A substitution in
15:58		8-6	2	2 BUCHANAN T free throw 1 - 2 made (1)
15:58		8-7	1	2 BUCHANAN T free throw 2 - 2 made (2)



**Emporia St. at Kansas**

11/03/21 Allen Fieldhouse, Lawrence  
2021-22 Men's Basketball

**Game Time:** 7:00 PM  
**Game Duration:** 1:44  
**Attendance:** 16,200

**Officials:** Kipp Kissinger, Brooks Wells, Amy Bonner

Game Time	Kan	Score	Diff	ESU
15:46	44 LIGHTFOOT M turnover lost ball (1)			4 EVANS K steal (1)
15:36		<b>8-9</b>	<b>-1</b>	14 MCGUIRE G 2pt FG from turnover in the paint, layup made (2)
15:36				2 BUCHANAN T assist (1)
15:21	44 LIGHTFOOT M foul drawn (1)			2 BUCHANAN T foul personal (1 - 2)
15:15	3 HARRIS D turnover bad pass (1)			
14:57	30 AGBAJI O steal (1)			2 BUCHANAN T turnover lost ball (3)
14:53	2 BRAUN C 2pt FG fast break from turnover in the paint, layup made (5)	<b>10-9</b>	<b>1</b>	
14:53	30 AGBAJI O assist (1)			
14:36		<b>10-11</b>	<b>-1</b>	2 BUCHANAN T 2pt FG in the paint, layup made (4)
14:30	30 AGBAJI O 3pt FG fast break, jump shot made (6)	<b>13-11</b>	<b>2</b>	
14:30	1 YESUFU J assist (1)			
14:02				5 TURNER J 2pt FG in the paint, layup blocked
14:02	2 BRAUN C block (1)			
13:58	2 BRAUN C defensive rebound (1)			
13:57	3 HARRIS D 2pt FG fast break in the paint, layup made (2)	<b>15-11</b>	<b>4</b>	
13:57	30 AGBAJI O assist (2)			
13:36	3 HARRIS D substitution out			
13:36	11 MARTIN R substitution in			
13:29		<b>15-13</b>	<b>2</b>	5 TURNER J 2pt FG in the paint, layup made (2)
13:18	1 YESUFU J 2pt FG in the paint, layup blocked			
13:18				5 TURNER J block (1)
13:15				5 TURNER J defensive rebound (2)
13:11				14 MCGUIRE G 2pt FG in the paint, layup blocked
13:11	44 LIGHTFOOT M block (1)			
13:05	30 AGBAJI O defensive rebound (2)			
13:00	11 MARTIN R turnover bad pass (1)			4 EVANS K steal (2)
12:47				5 TURNER J 3pt FG from turnover, jump shot missed
12:45	30 AGBAJI O defensive rebound (3)			
12:32	11 MARTIN R 2pt FG outside the paint, step back jump shot made (2)	<b>17-13</b>	<b>4</b>	
12:06				5 TURNER J 2pt FG in the paint, layup missed
12:03	44 LIGHTFOOT M defensive rebound (1)			
11:57	11 MARTIN R 2pt FG in the paint, driving layup made (4)	<b>19-13</b>	<b>6</b>	
11:55	Timeout media			
11:55	2 BRAUN C substitution out			
11:55	44 LIGHTFOOT M substitution out			
11:55	3 HARRIS D substitution in			
11:55	21 CLEMENCE Z substitution in			
11:55				2 BUCHANAN T substitution out
11:55				5 TURNER J substitution out
11:55				14 MCGUIRE G substitution out
11:55				23 NANCE A substitution out
11:55				0 BUOM M substitution in
11:55				1 ROGERS-SCHMIDT P substitution in
11:55				3 HADDOCK B substitution in
11:55				12 MCCRAY M substitution in
11:37		<b>19-15</b>	<b>4</b>	1 ROGERS-SCHMIDT P 2pt FG in the paint, layup made (2)
11:37				3 HADDOCK B assist (1)



**Emporia St. at Kansas**

11/03/21 Allen Fieldhouse, Lawrence  
2021-22 Men's Basketball

**Game Time:** 7:00 PM  
**Game Duration:** 1:44  
**Attendance:** 16,200

**Officials:** Kipp Kissinger, Brooks Wells, Amy Bonner

Game Time	Kan	Score	Diff	ESU
11:23	21 CLEMENCE Z 2pt FG in the paint, layup made (2)	<b>21-15</b>	<b>6</b>	
11:23	11 MARTIN R assist (1)			
11:10	1 YESUFU J steal (1)			12 MCCRAY M turnover lost ball (1)
11:05	3 HARRIS D 2pt FG fast break from turnover in the paint, layup made (4)	<b>23-15</b>	<b>8</b>	
11:05	1 YESUFU J assist (2)			
10:47		<b>23-18</b>	<b>5</b>	0 BUOM M 3pt FG , jump shot made (8)
10:47				4 EVANS K assist (1)
10:33	30 AGBAJI O 2pt FG outside the paint, jump shot missed			
10:30				12 MCCRAY M defensive rebound (1)
10:12				12 MCCRAY M 3pt FG , jump shot missed
10:09	3 HARRIS D defensive rebound (1)			
10:01	11 MARTIN R 2pt FG outside the paint, step back jump shot made (6)	<b>25-18</b>	<b>7</b>	
09:45	21 CLEMENCE Z foul personal (1 - 3)			1 ROGERS-SCHMIDT P foul drawn (1)
09:45	3 HARRIS D substitution out			
09:45	30 AGBAJI O substitution out			
09:45	0 PETTIFORD B substitution in			
09:45	2 BRAUN C substitution in			
09:45	21 CLEMENCE Z substitution out			
09:45	31 MARTIN C substitution in			
09:24				turnover shot clock (6)
09:09	11 MARTIN R 3pt FG from turnover, jump shot made (9)	<b>28-18</b>	<b>10</b>	
08:50	1 YESUFU J foul personal (1 - 4)			12 MCCRAY M foul drawn (1)
08:36				12 MCCRAY M 2pt FG in the paint, layup missed
08:33	0 PETTIFORD B defensive rebound (1)			
08:27	11 MARTIN R 3pt FG , jump shot missed			
08:24				12 MCCRAY M defensive rebound (2)
08:08				12 MCCRAY M 2pt FG in the paint, layup blocked
08:08	31 MARTIN C block (1)			
08:02				0 BUOM M offensive rebound (2)
07:52		<b>28-20</b>	<b>8</b>	0 BUOM M 2pt FG second chance in the paint, dunk, made (10)
07:48	11 MARTIN R 2pt FG in the paint, driving layup made (11)	<b>30-20</b>	<b>10</b>	
07:34	31 MARTIN C steal (1)			12 MCCRAY M turnover lost ball (2)
07:29	Timeout media			
07:29	1 YESUFU J substitution out			
07:29	11 MARTIN R substitution out			
07:29	3 HARRIS D substitution in			
07:29	24 ADAMS, JR. K substitution in			
07:29				0 BUOM M substitution out
07:29				1 ROGERS-SCHMIDT P substitution out
07:29				4 EVANS K substitution out
07:29				12 MCCRAY M substitution out
07:29				2 BUCHANAN T substitution in
07:29				5 TURNER J substitution in
07:29				14 MCGUIRE G substitution in
07:29				30 THIESSEN M substitution in
07:19	0 PETTIFORD B 2pt FG from turnover in the paint, driving layup made (2)	<b>32-20</b>	<b>12</b>	
07:19	0 PETTIFORD B foul drawn (1)			2 BUCHANAN T foul shooting (2 - 3)



**Emporia St. at Kansas**

11/03/21 Allen Fieldhouse, Lawrence  
2021-22 Men's Basketball

**Game Time:** 7:00 PM  
**Game Duration:** 1:44  
**Attendance:** 16,200

**Officials:** Kipp Kissinger, Brooks Wells, Amy Bonner

Game Time	Kan	Score	Diff	ESU
07:19	0 PETTIFORD B free throw 1 - 1 made (3)	<b>33-20</b>	<b>13</b>	
07:05	3 HARRIS D steal (1)			5 TURNER J turnover lost ball (1)
07:00	24 ADAMS, JR. K 2pt FG from turnover in the paint, layup blocked			
07:00				30 THIESSEN M block (2)
06:57	offensive rebound (10)			
06:49	2 BRAUN C 3pt FG from turnover second chance, jump shot missed			
06:46				2 BUCHANAN T defensive rebound (1)
06:32				2 BUCHANAN T 2pt FG in the paint, layup missed
06:29	0 PETTIFORD B defensive rebound (2)			
06:22	24 ADAMS, JR. K 2pt FG in the paint, layup made (2)	<b>35-20</b>	<b>15</b>	
06:22	2 BRAUN C assist (1)			
06:06		<b>35-22</b>	<b>13</b>	5 TURNER J 2pt FG outside the paint, step back jump shot made (4)
05:53	31 MARTIN C foul drawn (1)			14 MCGUIRE G foul personal (1 - 4)
05:53	31 MARTIN C substitution out			
05:53	33 MCCORMACK D substitution in			
05:53				2 BUCHANAN T substitution out
05:53				4 EVANS K substitution in
05:45	2 BRAUN C 2pt FG in the paint, floating jump shot missed			
05:40				4 EVANS K defensive rebound (1)
05:27				3 HADDOCK B 3pt FG , jump shot missed
05:23	33 MCCORMACK D defensive rebound (2)			
05:06	33 MCCORMACK D 2pt FG in the paint, dunk, made (4)	<b>37-22</b>	<b>15</b>	
05:06	24 ADAMS, JR. K assist (1)			
04:46	33 MCCORMACK D steal (1)			14 MCGUIRE G turnover lost ball (1)
04:40	33 MCCORMACK D 2pt FG fast break from turnover in the paint, alleyoop made (6)	<b>39-22</b>	<b>17</b>	
04:40	2 BRAUN C assist (2)			
04:21				4 EVANS K 3pt FG , jump shot missed
04:18				14 MCGUIRE G offensive rebound (1)
04:17				3 HADDOCK B 3pt FG second chance, jump shot missed
04:13				14 MCGUIRE G offensive rebound (2)
04:11				14 MCGUIRE G 2pt FG second chance in the paint, jump shot missed
04:09	24 ADAMS, JR. K defensive rebound (1)			
03:59	33 MCCORMACK D 2pt FG in the paint, turnaround jump shot missed			
03:54				30 THIESSEN M defensive rebound (3)
03:26				5 TURNER J 2pt FG in the paint, layup blocked
03:26	33 MCCORMACK D block (1)			
03:25	defensive rebound (14)			
03:25				Timeout media
03:25	2 BRAUN C substitution out			
03:25	3 HARRIS D substitution out			
03:25	11 MARTIN R substitution in			
03:25	30 AGBAJI O substitution in			
03:25				3 HADDOCK B substitution out
03:25				14 MCGUIRE G substitution out
03:25				30 THIESSEN M substitution out

**Emporia St. at Kansas**11/03/21 Allen Fieldhouse, Lawrence  
2021-22 Men's Basketball

Game Time: 7:00 PM

Game Duration: 1:44

Attendance: 16,200

Officials: Kipp Kissinger, Brooks Wells, Amy Bonner

Game Time	Kan	Score	Diff	ESU
03:25				1 ROGERS-SCHMIDT P substitution in
03:25				2 BUCHANAN T substitution in
03:25				23 NANCE A substitution in
03:14	30 AGBAJI O 3pt FG , jump shot made (9)	<b>42-22</b>	<b>20</b>	
03:14	11 MARTIN R assist (2)			
02:52	11 MARTIN R foul personal (1 - 5)			5 TURNER J foul drawn (1)
02:47				5 TURNER J 2pt FG outside the paint, jump shot missed
02:44	11 MARTIN R defensive rebound (1)			
02:26	11 MARTIN R 2pt FG outside the paint, jump shot missed			
02:23				23 NANCE A defensive rebound (1)
02:08				23 NANCE A 2pt FG in the paint, hook shot blocked
02:08	33 MCCORMACK D block (2)			
02:04	33 MCCORMACK D defensive rebound (3)			
01:57	33 MCCORMACK D foul drawn (2)			1 ROGERS-SCHMIDT P foul shooting (1 - 5)
01:56	33 MCCORMACK D free throw 1 - 2 made (7)	<b>43-22</b>	<b>21</b>	
01:56	0 PETTIFORD B substitution out			
01:56	1 YESUFU J substitution in			
01:56	33 MCCORMACK D free throw 2 - 2 made (8)	<b>44-22</b>	<b>22</b>	
01:36				2 BUCHANAN T 2pt FG in the paint, jump shot missed
01:33	11 MARTIN R defensive rebound (2)			
01:32	11 MARTIN R foul drawn (1)			2 BUCHANAN T foul personal (3 - 6)
01:32				2 BUCHANAN T substitution out
01:32				23 NANCE A substitution out
01:32				0 BUOM M substitution in
01:32				3 HADDOCK B substitution in
01:27	30 AGBAJI O 2pt FG in the paint, driving layup made (11)	<b>46-22</b>	<b>24</b>	
01:06		<b>46-25</b>	<b>21</b>	5 TURNER J 3pt FG , jump shot made (7)
00:55	30 AGBAJI O 3pt FG , jump shot made (14)	<b>49-25</b>	<b>24</b>	
00:55	1 YESUFU J assist (3)			
00:26	30 AGBAJI O steal (2)			0 BUOM M turnover lost ball (1)
00:20	11 MARTIN R 2pt FG fast break from turnover in the paint, jump shot made (13)	<b>51-25</b>	<b>26</b>	
00:01				5 TURNER J 2pt FG outside the paint, jump shot missed
00:00	33 MCCORMACK D defensive rebound (4)			
<b>END OF PERIOD</b>				
<b>Kan 51-25 ESU</b>				



**Emporia St. at Kansas**

11/03/21 Allen Fieldhouse, Lawrence  
2021-22 Men's Basketball

Game Time: 7:00 PM  
Game Duration: 1:44  
Attendance: 16,200

Officials: Kipp Kissinger, Brooks Wells, Amy Bonner

**Emporia St. - 25**

NO.	Name	C	Min	FG			Rebounds			Fouls		TP	AS	TO	ST	Blocks		+/-
				M-A	3P	FT	OR	DR	TOT	PF	FD					BS	BA	
0	Mayuom Buom	C	10:00	4-4	1-1	1-1	1	1	2	0	1	10	0	1	0	0	0	-11
30	Mason Thiessen	C	08:06	0-0	0-0	0-0	0	3	3	1	0	0	0	0	0	2	0	-10
2	Tray Buchanan	G	11:34	1-4	0-1	2-2	0	1	1	3	1	4	1	3	0	0	0	-14
4	Kaden Evans	G	18:24	0-1	0-1	0-0	0	1	1	0	0	0	1	1	2	0	0	-23
5	Jumah'Ri Turner	G	15:34	3-10	1-2	0-0	0	2	2	0	1	7	0	1	1	1	2	-22
14	Gage McGuire		08:07	1-3	0-0	0-0	2	0	2	1	0	2	0	1	0	0	1	-10
23	Adam Nance		05:56	0-1	0-0	0-0	0	1	1	0	0	0	0	0	0	0	1	-8
1	Peyton Rogers-Schmidt		07:51	1-1	0-0	0-0	0	0	0	1	1	2	0	0	0	0	0	-13
3	Brooks Haddock		10:02	0-2	0-2	0-0	0	0	0	0	0	0	1	0	0	0	0	-15
12	Marquis McCray		04:26	0-3	0-1	0-0	0	2	2	0	1	0	0	2	0	0	1	-4
Team							0	0	0			0		1				
<b>Totals</b>				10-29	2-8	3-3	3	11	14	6	5	25	3	10	3	3	5	-26

Shooting By Period		
1st FG%	10-29	34.5%
3PT%	2-8	25.0%
FT%	3-3	100%
GM FG%	10-29	34.5%
3PT%	2-8	25.0%
FT%	3-3	100.0%

Dead Ball Rebounds: 0, 0

Technical Fouls::NONE

**Kansas - 51**

NO.	Name	C	Min	FG			Rebounds			Fouls		TP	AS	TO	ST	Blocks		+/-
				M-A	3P	FT	OR	DR	TOT	PF	FD					BS	BA	
33	David McCormack	F	09:55	3-6	0-0	2-2	1	3	4	1	2	8	1	0	1	2	1	16
2	Christian Braun	G	14:25	2-6	1-3	0-0	0	1	1	1	0	5	2	1	1	1	0	16
3	Dajuan Harris	G	12:38	2-2	0-0	0-0	0	1	1	0	0	4	1	1	1	0	0	12
12	Chris Teahan	G	04:02	0-0	0-0	0-0	0	1	1	0	0	0	0	0	0	0	0	3
30	Ochai Agbaji	G	13:40	5-7	4-5	0-0	0	3	3	0	0	14	2	0	2	0	0	16
1	Joseph Yesufu		10:25	0-1	0-0	0-0	0	0	0	1	0	0	3	0	1	0	1	12
44	Mitch Lightfoot		04:03	0-0	0-0	0-0	0	1	1	0	1	0	0	1	0	1	0	3
11	Remy Martin		09:32	6-8	1-2	0-0	0	2	2	1	1	13	2	1	0	0	0	15
21	Zach Clemence		02:10	1-1	0-0	0-0	0	0	0	1	0	2	0	0	0	0	0	1
0	Bobby Pettiford		07:49	1-1	0-0	1-1	0	2	2	0	1	3	0	0	0	0	0	14
31	Cam Martin		03:52	0-0	0-0	0-0	0	0	0	0	1	0	0	0	1	1	0	6
24	KJ Adams, Jr.		07:29	1-2	0-0	0-0	0	1	1	0	0	2	1	0	0	0	1	16
Team							1	1	2			0		0				
<b>Totals</b>				21-34	6-10	3-3	2	16	18	5	6	51	12	4	7	5	3	26

Shooting By Period		
1st FG%	21-34	61.8%
3PT%	6-10	60.0%
FT%	3-3	100%
GM FG%	21-34	61.8%
3PT%	6-10	60.0%
FT%	3-3	100.0%

Dead Ball Rebounds: 0, 0

Technical Fouls::NONE

	ESU	Kan
Biggest lead	2 (1st 19:24)	26 (1st 0:20)
Best Scoring Run	7 (1st 15:36)	11 (1st 1:27)
Lead Changes	5	
Times Tied	0	
Time with Lead	02:12	17:12

	ESU	Kan
Points from		
Turnovers	2	20
Paint	14	26
Second Chance	2	3
Fast Breaks	0	13
Bench	4	20

	Period by Period Scoring		
	1st	2nd	TOT
ESU	25	35	60
Kan	51	35	86

**Emporia St. at Kansas**11/03/21 Allen Fieldhouse, Lawrence  
2021-22 Men's Basketball

Game Time: 7:00 PM

Game Duration: 1:44

Attendance: 16,200

Officials: Kipp Kissinger, Brooks Wells, Amy Bonner

**Period 2****Quarter Starters:**

<b>Kan</b>	2 Braun C	3 Harris D	12 Teahan C	30 Agbaji O	33 McCormack D
<b>ESU</b>	0 Buom M	2 Buchanan T	4 Evans K	5 Turner J	30 Thiessen M

Game Time	Kan	Score	Diff	ESU
20:00	1 YESUFU J substitution out			
20:00	11 MARTIN R substitution out			
20:00	24 ADAMS, JR. K substitution out			
20:00	2 BRAUN C substitution in			
20:00	3 HARRIS D substitution in			
20:00	12 TEAHAN C substitution in			
20:00				1 ROGERS-SCHMIDT P substitution out
20:00				3 HADDOCK B substitution out
20:00				2 BUCHANAN T substitution in
20:00				30 THIESEN M substitution in
19:47		<b>51-27</b>	<b>24</b>	0 BUOM M 2pt FG in the paint, layup made (12)
19:27	33 MCCORMACK D foul drawn (3)			0 BUOM M foul shooting (1 - 1)
19:27	33 MCCORMACK D free throw 1 - 2 made (9)	<b>52-27</b>	<b>25</b>	
19:27	33 MCCORMACK D free throw 2 - 2 made (10)	<b>53-27</b>	<b>26</b>	
19:12		<b>53-29</b>	<b>24</b>	2 BUCHANAN T 2pt FG in the paint, jump shot made (6)
19:12				0 BUOM M assist (1)
18:46	33 MCCORMACK D 2pt FG outside the paint, hook shot made (12)	<b>55-29</b>	<b>26</b>	
18:29	12 TEAHAN C foul personal (1 - 1)			2 BUCHANAN T foul drawn (2)
18:23				5 TURNER J 2pt FG outside the paint, jump shot missed
18:21	30 AGBAJI O defensive rebound (4)			
18:15	30 AGBAJI O 2pt FG in the paint, layup blocked			
18:15				30 THIESEN M block (3)
18:11	33 MCCORMACK D offensive rebound (5)			
18:09	2 BRAUN C 3pt FG second chance, jump shot missed			
18:06				4 EVANS K defensive rebound (2)
17:57		<b>55-31</b>	<b>24</b>	2 BUCHANAN T 2pt FG outside the paint, jump shot made (8)
17:51	3 HARRIS D turnover lost ball (2)			4 EVANS K steal (3)
17:51	3 HARRIS D foul personal (1 - 2)			4 EVANS K foul drawn (1)
17:40		<b>55-33</b>	<b>22</b>	5 TURNER J 2pt FG from turnover in the paint, step back jump shot made (9)
17:19	33 MCCORMACK D foul drawn (4)			30 THIESEN M foul shooting (2 - 2)
17:19	33 MCCORMACK D free throw 1 - 2 made (13)	<b>56-33</b>	<b>23</b>	
17:19	12 TEAHAN C substitution out			
17:19	11 MARTIN R substitution in			
17:19	33 MCCORMACK D free throw 2 - 2 made (14)	<b>57-33</b>	<b>24</b>	
17:06				2 BUCHANAN T 2pt FG in the paint, turnaround jump shot missed
17:02	33 MCCORMACK D defensive rebound (6)			
16:53				2 BUCHANAN T substitution out
16:53				20 JOHNSON P substitution in
16:43	3 HARRIS D 2pt FG in the paint, layup made (6)	<b>59-33</b>	<b>26</b>	
16:24				0 BUOM M 2pt FG in the paint, hook shot missed
16:20	2 BRAUN C defensive rebound (2)			





**Emporia St. at Kansas**

11/03/21 Allen Fieldhouse, Lawrence  
2021-22 Men's Basketball

**Game Time:** 7:00 PM  
**Game Duration:** 1:44  
**Attendance:** 16,200

**Officials:** Kipp Kissinger, Brooks Wells, Amy Bonner

Game Time	Kan	Score	Diff	ESU
16:15	30 AGBAJI O 3pt FG , jump shot missed			
16:11				0 BUOM M defensive rebound (3)
16:05				4 EVANS K 3pt FG , jump shot missed
16:02	33 MCCORMACK D defensive rebound (7)			
15:46	33 MCCORMACK D 2pt FG in the paint, hook shot made (16)	<b>61-33</b>	<b>28</b>	
15:46	11 MARTIN R assist (3)			
15:25				5 TURNER J 3pt FG , jump shot missed
15:22	33 MCCORMACK D defensive rebound (8)			
15:14	11 MARTIN R 2pt FG in the paint, driving layup made (15)	<b>63-33</b>	<b>30</b>	
14:55	Timeout media			
14:55	2 BRAUN C substitution out			
14:55	3 HARRIS D substitution out			
14:55	33 MCCORMACK D substitution out			
14:55	0 PETTIFORD B substitution in			
14:55	1 YESUFU J substitution in			
14:55	44 LIGHTFOOT M substitution in			
14:55				5 TURNER J substitution out
14:55				20 JOHNSON P substitution out
14:55				30 THIESEN M substitution out
14:55				2 BUCHANAN T substitution in
14:55				3 HADDOCK B substitution in
14:55				14 MCGUIRE G substitution in
14:45				4 EVANS K 2pt FG in the paint, jump shot blocked
14:45	44 LIGHTFOOT M block (2)			
14:38	0 PETTIFORD B defensive rebound (3)			
14:37	0 PETTIFORD B 2pt FG in the paint, layup missed			
14:33				14 MCGUIRE G defensive rebound (3)
14:29	11 MARTIN R foul shooting (2 - 3)			2 BUCHANAN T foul drawn (3)
14:29		<b>63-34</b>	<b>29</b>	2 BUCHANAN T free throw 1 - 2 made (9)
14:29		<b>63-35</b>	<b>28</b>	2 BUCHANAN T free throw 2 - 2 made (10)
14:14	30 AGBAJI O 3pt FG , jump shot made (17)	<b>66-35</b>	<b>31</b>	
13:55		<b>66-37</b>	<b>29</b>	0 BUOM M 2pt FG in the paint, hook shot made (14)
13:39	1 YESUFU J foul drawn (1)			2 BUCHANAN T foul personal (4 - 3)
13:39				2 BUCHANAN T substitution out
13:39				12 MCCRAY M substitution in
13:28	44 LIGHTFOOT M 2pt FG in the paint, hook shot missed			
13:26				3 HADDOCK B defensive rebound (1)
13:15	11 MARTIN R steal (1)			12 MCCRAY M turnover bad pass (3)
13:09	30 AGBAJI O 2pt FG from turnover in the paint, dunk, missed			
13:06				12 MCCRAY M defensive rebound (3)
13:05				3 HADDOCK B 3pt FG , jump shot missed
13:02	30 AGBAJI O defensive rebound (5)			
12:48	44 LIGHTFOOT M 3pt FG , jump shot made (3)	<b>69-37</b>	<b>32</b>	
12:48	0 PETTIFORD B assist (1)			
12:23		<b>69-39</b>	<b>30</b>	14 MCGUIRE G 2pt FG in the paint, layup made (4)
12:23				3 HADDOCK B assist (2)
12:10	1 YESUFU J 2pt FG in the paint, dunk, missed			
12:05	44 LIGHTFOOT M offensive rebound (2)			



**Emporia St. at Kansas**

11/03/21 Allen Fieldhouse, Lawrence  
2021-22 Men's Basketball

**Game Time:** 7:00 PM  
**Game Duration:** 1:44  
**Attendance:** 16,200

**Officials:** Kipp Kissinger, Brooks Wells, Amy Bonner

Game Time	Kan	Score	Diff	ESU
12:05	44 LIGHTFOOT M 2pt FG second chance in the paint, layup missed			
12:03	44 LIGHTFOOT M offensive rebound (3)			
12:03	44 LIGHTFOOT M 2pt FG second chance in the paint, layup missed			
11:58	1 YESUFU J offensive rebound (1)			
11:58	1 YESUFU J 2pt FG second chance in the paint, layup made (2)	<b>71-39</b>	<b>32</b>	
11:43				14 MCGUIRE G 2pt FG in the paint, layup missed
11:40	30 AGBAJI O defensive rebound (6)			
11:27	11 MARTIN R 2pt FG outside the paint, jump shot missed			
11:24	44 LIGHTFOOT M offensive rebound (4)			
11:15	1 YESUFU J 2pt FG second chance in the paint, layup missed			
11:12	44 LIGHTFOOT M offensive rebound (5)			
11:12	44 LIGHTFOOT M foul drawn (2)			12 MCCRAY M foul shooting (1 - 4)
11:12	Timeout media			
11:12	11 MARTIN R substitution out			
11:12	30 AGBAJI O substitution out			
11:12	2 BRAUN C substitution in			
11:12	3 HARRIS D substitution in			
11:12				0 BUOM M substitution out
11:12				3 HADDOCK B substitution out
11:12				14 MCGUIRE G substitution out
11:12				1 ROGERS-SCHMIDT P substitution in
11:12				5 TURNER J substitution in
11:12				23 NANCE A substitution in
11:12	44 LIGHTFOOT M free throw 1 - 2 made (4)	<b>72-39</b>	<b>33</b>	
11:12	44 LIGHTFOOT M free throw 2 - 2 made (5)	<b>73-39</b>	<b>34</b>	
11:12	44 LIGHTFOOT M substitution out			
11:12	21 CLEMENCE Z substitution in			
11:00	1 YESUFU J foul personal (2 - 4)			23 NANCE A foul drawn (1)
10:38				4 EVANS K 3pt FG , jump shot missed
10:35	2 BRAUN C defensive rebound (3)			
10:19	2 BRAUN C 2pt FG in the paint, layup made (7)	<b>75-39</b>	<b>36</b>	
10:19	0 PETTIFORD B assist (2)			
10:02		<b>75-42</b>	<b>33</b>	23 NANCE A 3pt FG , jump shot made (3)
10:02				12 MCCRAY M assist (1)
09:55	1 YESUFU J turnover dribbling violation (1)			
09:55				1 ROGERS-SCHMIDT P substitution out
09:55				4 EVANS K substitution out
09:55				14 MCGUIRE G substitution in
09:55				30 THIESSEN M substitution in
09:39	0 PETTIFORD B foul shooting (1 - 5)			5 TURNER J foul drawn (2)
09:32		<b>75-43</b>	<b>32</b>	5 TURNER J free throw 1 - 2 made (10)
09:32				12 MCCRAY M substitution out
09:32				2 BUCHANAN T substitution in
09:32		<b>75-44</b>	<b>31</b>	5 TURNER J free throw 2 - 2 made (11)
09:26	2 BRAUN C 3pt FG , jump shot missed			
09:23				5 TURNER J defensive rebound (3)
09:16		<b>75-47</b>	<b>28</b>	23 NANCE A 3pt FG , jump shot made (6)
09:16				5 TURNER J assist (1)



**Emporia St. at Kansas**

11/03/21 Allen Fieldhouse, Lawrence  
2021-22 Men's Basketball

**Game Time:** 7:00 PM  
**Game Duration:** 1:44  
**Attendance:** 16,200

**Officials:** Kipp Kissinger, Brooks Wells, Amy Bonner

Game Time	Kan	Score	Diff	ESU
08:56	2 BRAUN C 3pt FG , jump shot made (10)	<b>78-47</b>	<b>31</b>	
08:56	3 HARRIS D assist (2)			
08:36				2 BUCHANAN T 3pt FG , jump shot missed
08:33				5 TURNER J offensive rebound (4)
08:29	21 CLEMENCE Z foul shooting (2 - 6)			2 BUCHANAN T foul drawn (4)
08:29		<b>78-48</b>	<b>30</b>	2 BUCHANAN T free throw 1 - 2 made (11)
08:29				14 MCGUIRE G substitution out
08:29				22 COLLINS G substitution in
08:29		<b>78-49</b>	<b>29</b>	2 BUCHANAN T free throw 2 - 2 made (12)
08:12	1 YESUFU J 2pt FG in the paint, layup missed			
08:10				30 THIESSEN M defensive rebound (4)
08:02	1 YESUFU J steal (2)			23 NANCE A turnover lost ball (1)
07:39	0 PETTIFORD B 2pt FG from turnover outside the paint, jump shot missed			
07:36				23 NANCE A defensive rebound (2)
07:32		<b>78-51</b>	<b>27</b>	2 BUCHANAN T 2pt FG in the paint, layup made (14)
07:17	1 YESUFU J 2pt FG in the paint, dunk, made (4)	<b>80-51</b>	<b>29</b>	
07:17	2 BRAUN C assist (3)			
06:55				22 COLLINS G 2pt FG in the paint, jump shot missed
06:52	21 CLEMENCE Z defensive rebound (1)			
06:41	21 CLEMENCE Z foul offensive (3 - 7)			22 COLLINS G foul drawn (1)
06:41	21 CLEMENCE Z turnover offensive (1)			
06:41	Timeout media			
06:41	0 PETTIFORD B substitution out			
06:41	1 YESUFU J substitution out			
06:41	2 BRAUN C substitution out			
06:41	3 HARRIS D substitution out			
06:41	21 CLEMENCE Z substitution out			
06:41	5 CUFFE, JR. K substitution in			
06:41	11 MARTIN R substitution in			
06:41	24 ADAMS, JR. K substitution in			
06:41	30 AGBAJI O substitution in			
06:41	31 MARTIN C substitution in			
06:41				22 COLLINS G substitution out
06:41				23 NANCE A substitution out
06:41				0 BUOM M substitution in
06:41				14 MCGUIRE G substitution in
06:25				2 BUCHANAN T 2pt FG from turnover in the paint, layup missed
06:22	30 AGBAJI O defensive rebound (7)			
06:17	31 MARTIN C foul drawn (2)			14 MCGUIRE G foul personal (2 - 5)
06:10	30 AGBAJI O 2pt FG outside the paint, jump shot missed			
06:06				2 BUCHANAN T defensive rebound (2)
06:04				5 TURNER J 2pt FG in the paint, layup missed
05:59				0 BUOM M offensive rebound (4)
05:59				0 BUOM M 2pt FG second chance in the paint, layup missed
05:58	31 MARTIN C defensive rebound (1)			
05:55	5 CUFFE, JR. K 3pt FG , jump shot missed			
05:51				0 BUOM M defensive rebound (5)
05:50	11 MARTIN R foul personal (3 - 8)			5 TURNER J foul drawn (3)



**Emporia St. at Kansas**

11/03/21 Allen Fieldhouse, Lawrence  
2021-22 Men's Basketball

**Game Time:** 7:00 PM  
**Game Duration:** 1:44  
**Attendance:** 16,200

**Officials:** Kipp Kissinger, Brooks Wells, Amy Bonner

Game Time	Kan	Score	Diff	ESU
05:50	30 AGBAJI O substitution out			
05:50	1 YESUFU J substitution in			
05:50				5 TURNER J 1&1 free throw 1 missed
05:49	31 MARTIN C defensive rebound (2)			
05:32	31 MARTIN C turnover lost ball (1)			2 BUCHANAN T steal (1)
05:28		<b>80-53</b>	<b>27</b>	5 TURNER J 2pt FG from turnover in the paint, floating jump shot made (13)
05:08	24 ADAMS, JR. K 2pt FG in the paint, jump shot missed			
05:05	31 MARTIN C offensive rebound (3)			
05:04	31 MARTIN C 2pt FG second chance in the paint, jump shot blocked			
05:04				14 MCGUIRE G block (1)
05:00				14 MCGUIRE G defensive rebound (4)
04:57	1 YESUFU J steal (3)			2 BUCHANAN T turnover lost ball (4)
04:52	1 YESUFU J 2pt FG from turnover in the paint, dunk, missed			
04:48				2 BUCHANAN T defensive rebound (3)
04:46				2 BUCHANAN T 3pt FG , jump shot missed
04:43	31 MARTIN C defensive rebound (4)			
04:41	5 CUFFE, JR. K 2pt FG fast break in the paint, layup made (2)	<b>82-53</b>	<b>29</b>	
04:41	11 MARTIN R assist (4)			
04:17	31 MARTIN C foul shooting (1 - 9)			2 BUCHANAN T foul drawn (5)
04:16		<b>82-54</b>	<b>28</b>	2 BUCHANAN T free throw 1 - 3 made (15)
04:16		<b>82-55</b>	<b>27</b>	2 BUCHANAN T free throw 2 - 3 made (16)
04:16	11 MARTIN R substitution out			
04:16	0 PETTIFORD B substitution in			
04:16				30 THIESSEN M substitution out
04:16				32 TSHIBANGU K substitution in
04:16		<b>82-56</b>	<b>26</b>	2 BUCHANAN T free throw 3 - 3 made (17)
03:59	31 MARTIN C 3pt FG , jump shot missed			
03:56				5 TURNER J defensive rebound (5)
03:44				5 TURNER J 3pt FG , jump shot missed
03:39				offensive rebound (30)
03:39	Timeout media			
03:39	1 YESUFU J substitution out			
03:39	20 JANKOVICH M substitution in			
03:39				0 BUOM M substitution out
03:39				14 MCGUIRE G substitution out
03:39				32 TSHIBANGU K substitution out
03:39				1 ROGERS-SCHMIDT P substitution in
03:39				4 EVANS K substitution in
03:39				23 NANCE A substitution in
03:23				5 TURNER J 2pt FG second chance in the paint, floating jump shot missed
03:20	0 PETTIFORD B defensive rebound (4)			
03:11	5 CUFFE, JR. K foul offensive (1 - 10)			23 NANCE A foul drawn (2)
03:11	5 CUFFE, JR. K turnover offensive (1)			
03:11				5 TURNER J substitution out
03:11				3 HADDOCK B substitution in
03:05	5 CUFFE, JR. K foul personal (2 - 11)			2 BUCHANAN T foul drawn (6)
03:05		<b>82-57</b>	<b>25</b>	2 BUCHANAN T free throw 1 - 2 made (18)



## Emporia St. at Kansas

11/03/21 Allen Fieldhouse, Lawrence  
2021-22 Men's Basketball

Game Time: 7:00 PM

Game Duration: 1:44

Attendance: 16,200

Officials: Kipp Kissinger, Brooks Wells, Amy Bonner

Game Time	Kan	Score	Diff	ESU
03:05		<b>82-58</b>	<b>24</b>	2 BUCHANAN T free throw 2 - 2 made (19)
02:53	31 MARTIN C foul drawn (3)			2 BUCHANAN T foul personal (5 - 6)
02:53				2 BUCHANAN T substitution out
02:53				0 BUOM M substitution in
02:53	31 MARTIN C substitution out			
02:53	21 CLEMENCE Z substitution in			
02:42	21 CLEMENCE Z 2pt FG in the paint, driving layup made (4)	<b>84-58</b>	<b>26</b>	
02:16				0 BUOM M 3pt FG , jump shot missed
02:12	20 JANKOVICH M defensive rebound (1)			
02:08	5 CUFFE, JR. K turnover lost ball (2)			4 EVANS K steal (4)
02:08				4 EVANS K turnover travel (2)
02:00	20 JANKOVICH M 3pt FG from turnover, jump shot missed			
01:56				3 HADDOCK B defensive rebound (2)
01:46				3 HADDOCK B 3pt FG , jump shot missed
01:44	21 CLEMENCE Z defensive rebound (2)			
01:39	5 CUFFE, JR. K 3pt FG , jump shot missed			
01:36				4 EVANS K defensive rebound (3)
01:30				4 EVANS K 3pt FG , jump shot missed
01:24	21 CLEMENCE Z defensive rebound (3)			
01:17	20 JANKOVICH M 3pt FG , jump shot missed			
01:13				1 ROGERS-SCHMIDT P defensive rebound (1)
00:50	20 JANKOVICH M foul shooting (1 - 12)			0 BUOM M foul drawn (2)
00:50				0 BUOM M free throw 1 - 2 missed
00:50				offensive dead ball rebound (1)
00:50				1 ROGERS-SCHMIDT P substitution out
00:50				3 HADDOCK B substitution out
00:50				4 EVANS K substitution out
00:50				23 NANCE A substitution out
00:50				12 MCCRAY M substitution in
00:50				20 JOHNSON P substitution in
00:50				22 COLLINS G substitution in
00:50				32 TSHIBANGU K substitution in
00:50				0 BUOM M free throw 2 - 2 missed
00:49				0 BUOM M offensive rebound (6)
00:47				0 BUOM M 2pt FG second chance in the paint, jump shot blocked
00:47	21 CLEMENCE Z block (1)			
00:43	21 CLEMENCE Z defensive rebound (4)			
00:31	20 JANKOVICH M foul drawn (1)			20 JOHNSON P foul personal (1 - 7)
00:31				0 BUOM M substitution out
00:31				30 THIESSEN M substitution in
00:31	20 JANKOVICH M 1&1 free throw 1 made (1)	<b>85-58</b>	<b>27</b>	
00:31	20 JANKOVICH M 1&1 free throw 2 made (2)	<b>86-58</b>	<b>28</b>	
00:05		<b>86-60</b>	<b>26</b>	12 MCCRAY M 2pt FG in the paint, turnaround jump shot made (2)
00:01	0 PETTIFORD B 3pt FG , step back jump shot missed			
00:00	offensive rebound (45)			
<b>END OF GAME</b>				
<b>Kan 86-60 ESU</b>				



**Emporia St. at Kansas**

11/03/21 Allen Fieldhouse, Lawrence  
2021-22 Men's Basketball

Game Time: 7:00 PM  
Game Duration: 1:44  
Attendance: 16,200

Officials: Kipp Kissinger, Brooks Wells, Amy Bonner

**Emporia St. - 35**

NO.	Name	C	Min	FG			3P			FT			Rebounds			Fouls		TP	AS	TO	ST	Blocks		+/-
				M-A	M-A	M-A	OR	DR	TOT	PF	FD	OR	DR	TOT	BS	BA								
0	Mayuom Buom	C	14:12	2-6	0-1	0-2	2	2	4	1	1	4	1	1	0	0	0	0	0	0	1	1	-5	
30	Mason Thiessen	C	11:15	0-0	0-0	0-0	0	1	1	1	0	0	0	0	0	0	0	0	0	0	1	0	2	
2	Tray Buchanan	G	11:02	3-7	0-2	9-9	0	2	2	2	5	15	0	1	1	0	0	1	1	0	0	11		
4	Kaden Evans	G	12:53	0-4	0-3	0-0	0	2	2	0	1	0	0	0	1	2	0	1	2	0	1	-7		
5	Jumah'Ri Turner	G	13:06	2-7	0-2	2-3	1	2	3	0	2	6	1	0	0	0	0	0	0	0	0	2		
20	PJ Johnson		02:49	0-0	0-0	0-0	0	0	0	1	0	0	0	0	0	0	0	0	0	0	0	-6		
3	Brooks Haddock		06:03	0-2	0-2	0-0	0	2	2	0	0	0	0	1	0	0	0	0	0	0	0	-2		
14	Gage McGuire		08:11	1-2	0-0	0-0	0	2	2	1	0	2	0	0	0	0	1	0	0	1	0	4		
12	Marquis McCray		04:58	1-1	0-0	0-0	0	1	1	1	0	2	1	1	1	0	0	0	0	0	0	-3		
1	Peyton Rogers-Schmidt		04:05	0-0	0-0	0-0	0	1	1	0	0	0	0	0	0	0	0	0	0	0	0	-1		
23	Adam Nance		07:19	2-2	2-2	0-0	0	1	1	0	2	6	0	1	0	0	0	0	0	0	0	3		
22	Gabe Collins		02:39	0-1	0-0	0-0	0	0	0	0	1	0	0	0	0	0	0	0	0	0	0	1		
32	Kabeya Tshibangu		01:28	0-0	0-0	0-0	0	0	0	0	0	0	0	0	0	0	0	0	0	0	0	1		
Team							1	0	1			0			0									
<b>Totals</b>				11-32	2-12	11-14	4	16	20	7	12	35	4	4	3	2	2	0						

Shooting By Period		
2 <sup>nd</sup> FG%	11-32	34.4%
3PT%	2-12	16.7%
FT%	11-14	78.6%
GM FG%	11-32	34.4%
3PT%	2-12	16.7%
FT%	11-14	78.6%

Dead Ball Rebounds: 1, 0

Technical Fouls::NONE

**Kansas - 35**

NO.	Name	C	Min	FG			3P			FT			Rebounds			Fouls		TP	AS	TO	ST	Blocks		+/-
				M-A	M-A	M-A	OR	DR	TOT	PF	FD	OR	DR	TOT	BS	BA								
33	David McCormack	F	05:05	2-2	0-0	4-4	1	3	4	0	2	8	0	0	0	0	0	0	0	0	0	0	4	
2	Christian Braun	G	09:36	2-4	1-3	0-0	0	2	2	0	0	5	1	0	0	0	0	0	0	0	0	1		
3	Dajuan Harris	G	09:36	1-1	0-0	0-0	0	0	0	1	0	2	1	1	0	0	0	0	0	0	0	1		
12	Chris Teahan	G	02:41	0-0	0-0	0-0	0	0	0	1	0	0	0	0	0	0	0	0	0	0	0	-3		
30	Ochai Agbaji	G	09:39	1-5	1-2	0-0	0	4	4	0	0	3	0	0	0	0	0	0	0	0	1	6		
11	Remy Martin		08:32	1-2	0-0	0-0	0	0	0	2	0	2	2	0	1	0	0	0	0	0	0	7		
0	Bobby Pettiford		12:30	0-3	0-1	0-0	0	2	2	1	0	0	2	0	0	0	0	0	0	0	0	-2		
1	Joseph Yesufu		10:25	2-6	0-0	0-0	1	0	1	1	1	4	0	1	2	0	0	0	0	0	0	-4		
44	Mitch Lightfoot		03:43	1-4	1-1	2-2	4	0	4	0	1	5	0	0	0	1	0	0	0	1	0	4		
21	Zach Clemence		07:24	1-1	0-0	0-0	0	4	4	2	0	2	0	1	0	1	0	1	0	0	0	-3		
5	Kyle Cuffe, Jr.		06:41	1-3	0-2	0-0	0	0	0	2	0	2	0	2	0	0	0	0	0	0	0	-3		
24	KJ Adams, Jr.		06:41	0-1	0-0	0-0	0	0	0	0	0	0	0	0	0	0	0	0	0	0	0	-3		
31	Cam Martin		03:48	0-2	0-1	0-0	1	3	4	1	2	0	0	1	0	0	0	0	0	1	0	-5		
20	Michael Jankovich		03:39	0-2	0-2	2-2	0	1	1	1	1	2	0	0	0	0	0	0	0	0	0	0		
Team							1	0	1			0			0									
<b>Totals</b>				12-36	3-12	8-8	8	19	27	12	7	35	6	6	3	2	2	0						

Shooting By Period		
2 <sup>nd</sup> FG%	12-36	33.3%
3PT%	3-12	25.0%
FT%	8-8	100%
GM FG%	12-36	33.3%
3PT%	3-12	25.0%
FT%	8-8	100.0%

Dead Ball Rebounds: 0, 0

Technical Fouls::NONE

	ESU	Kan
Biggest lead	0 (1 <sup>st</sup> 20:00)	36 (2 <sup>nd</sup> 10:19)
Best Scoring Run	8(2 <sup>nd</sup> 9:16)	8(2 <sup>nd</sup> 15:14)
Lead Changes	0	
Times Tied	0	
Time with Lead	00:00	19:47

Points from	ESU	Kan
Turnovers	8	0
Paint	16	16
Second Chance	2	4
Fast Breaks	0	2
Bench	10	17

	Period by Period Scoring		
	1st	2nd	TOT
ESU	25	35	60
Kan	51	35	86



**Emporia St. at Kansas**

11/03/21 Allen Fieldhouse, Lawrence  
2021-22 Men's Basketball

**Game Time:** 7:00 PM  
**Game Duration:** 1:44  
**Attendance:** 16,200

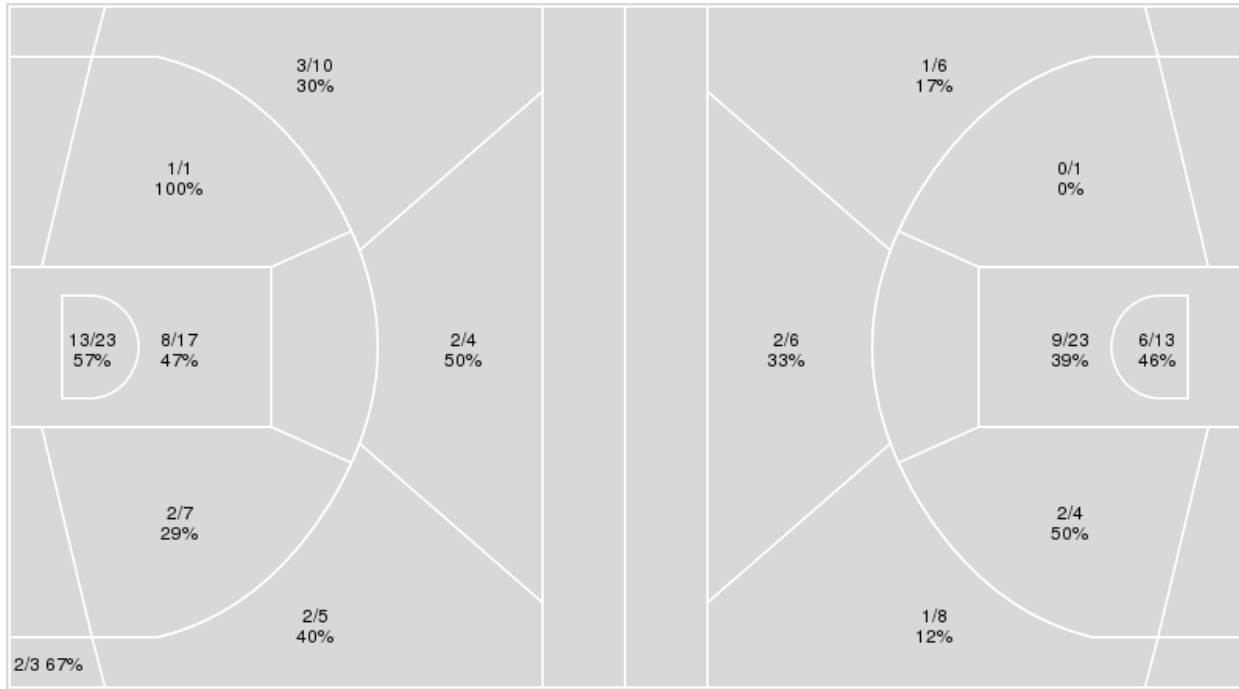
**Officials:** Kipp Kissinger, Brooks Wells, Amy Bonner

{ Players => 0, 1, 2, 3, 5, 10, 11, 12, 13, 15, 20, 21, 24, 30, 31, 33, 44, 55; } FG Types => All; Results => All;

{ Players => 0, 1, 2, 3, 4, 5, 10, 12, 13, 14, 20, 21, 22, 23, 30, 32; } FG Types => All; Results => All;

**Kansas**

**Emporia St.**



<b>Kansas</b>	<b>M/A</b>	<b>%</b>
Field Goals	33/70	47
2 Points	24/48	50
3 Points	9/22	41
Free Throws	11/11	100

<b>Emporia St.</b>	<b>M/A</b>	<b>%</b>
Field Goals	21/61	34
2 Points	17/41	41
3 Points	4/20	20
Free Throws	14/17	82

**Emporia St. at Kansas**11/03/21 Allen Fieldhouse, Lawrence  
2021-22 Men's Basketball

Game Time: 7:00 PM

Game Duration: 1:44

Attendance: 16,200

Officials: Kipp Kissinger, Brooks Wells, Amy Bonner

**Emporia St.**

No	Name	Mins		Score		Points Diff		Points per Min		Assists		Rebounds		Steals		Turnovers	
		On	Off	On	Off	On	Off	On	Off	On	Off	On	Off	On	Off	On	Off
0	Mayuom Buom	24:12	15:48	34 - 50	26 - 36	-16	-10	1.40	1.65	4	3	23	11	4	2	10	4
1	Peyton Rogers-Schmidt	11:56	28:04	15 - 29	45 - 57	-14	-12	1.26	1.60	3	4	7	27	1	5	5	9
2	Tray Buchanan	22:36	17:24	42 - 45	18 - 41	-3	-23	1.86	1.03	3	4	20	14	5	1	7	7
3	Brooks Haddock	16:05	23:55	20 - 37	40 - 49	-17	-9	1.24	1.67	3	4	14	20	1	5	8	6
4	Kaden Evans	31:17	08:43	42 - 72	18 - 14	-30	4	1.34	2.07	6	1	21	13	5	1	11	3
5	Jumah'Ri Turner	28:40	11:20	43 - 63	17 - 23	-20	-6	1.50	1.50	4	3	24	10	5	1	9	5
12	Marquis McCray	09:24	30:36	15 - 22	45 - 64	-7	-19	1.60	1.47	4	3	6	28	0	6	4	10
14	Gage McGuire	16:18	23:42	27 - 33	33 - 53	-6	-20	1.66	1.39	3	4	18	16	3	3	5	9
20	PJ Johnson	02:49	37:11	2 - 8	58 - 78	-6	-20	0.71	1.56	0	7	2	32	0	6	0	14
22	Gabe Collins	02:39	37:21	5 - 4	55 - 82	1	-27	1.89	1.47	0	7	3	31	0	6	1	13
23	Adam Nance	13:15	26:45	22 - 27	38 - 59	-5	-21	1.66	1.42	3	4	9	25	3	3	3	11
30	Mason Thiessen	19:21	20:39	30 - 38	30 - 48	-8	-18	1.55	1.45	2	5	20	14	3	3	7	7
32	Kabeya Tshibangu	01:28	38:32	3 - 2	57 - 84	1	-27	2.05	1.48	0	7	3	31	0	6	0	14

**Kansas**

No	Name	Mins		Score		Points Diff		Points per Min		Assists		Rebounds		Steals		Turnovers	
		On	Off	On	Off	On	Off	On	Off	On	Off	On	Off	On	Off	On	Off
0	Bobby Pettiford	20:19	19:41	39 - 27	47 - 33	12	14	1.92	2.39	8	10	24	21	5	5	4	6
1	Joseph Yesufu	20:50	19:10	49 - 41	37 - 19	8	18	2.35	1.93	11	7	21	24	7	3	6	4
2	Christian Braun	24:01	15:59	54 - 37	32 - 23	17	9	2.25	2.00	12	6	21	24	6	4	7	3
3	Dajuan Harris	22:14	17:46	51 - 38	35 - 22	13	13	2.29	1.97	14	4	18	27	6	4	6	4
5	Kyle Cuffe, Jr.	06:41	33:19	6 - 9	80 - 51	-3	29	0.90	2.40	1	17	11	34	1	9	3	7
11	Remy Martin	18:04	21:56	44 - 22	42 - 38	22	4	2.44	1.91	7	11	26	19	5	5	2	8
12	Chris Teahan	06:43	33:17	13 - 13	73 - 47	0	26	1.94	2.19	2	16	5	40	1	9	2	8
20	Michael Jankovich	03:39	36:21	4 - 4	82 - 56	0	26	1.10	2.26	0	18	6	39	0	10	2	8
21	Zach Clemence	09:34	30:26	17 - 19	69 - 41	-2	28	1.78	2.27	5	13	8	37	2	8	3	7
24	KJ Adams, Jr.	14:10	25:50	27 - 14	59 - 46	13	13	1.91	2.28	6	12	20	25	4	6	3	7
30	Ochai Agbaji	23:19	16:41	57 - 35	29 - 25	22	4	2.44	1.74	11	7	28	17	5	5	5	5
31	Cam Martin	07:40	32:20	12 - 11	74 - 49	1	25	1.57	2.29	2	16	9	36	3	7	2	8
33	David McCormack	15:00	25:00	36 - 16	50 - 44	20	6	2.40	2.00	7	11	16	29	3	7	2	8
44	Mitch Lightfoot	07:46	32:14	21 - 14	65 - 46	7	19	2.70	2.02	4	14	12	33	2	8	3	7





**Emporia St. at Kansas**

11/03/21 Allen Fieldhouse, Lawrence  
2021-22 Men's Basketball

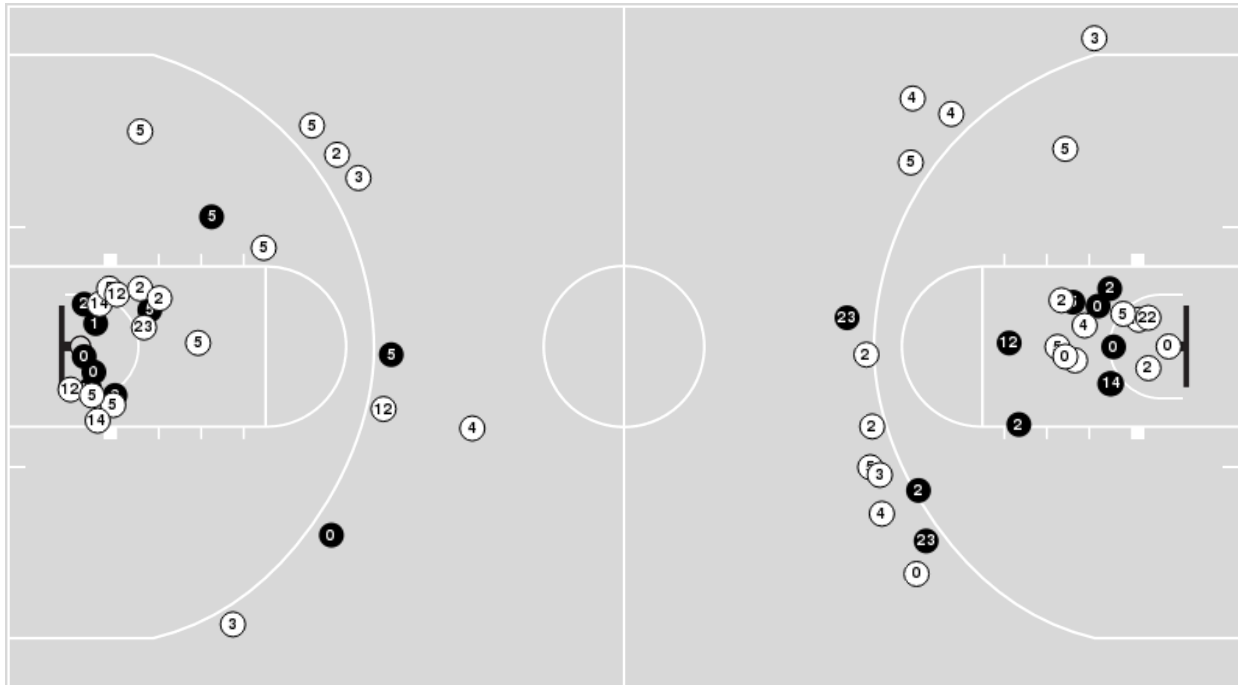
**Game Time:** 7:00 PM  
**Game Duration:** 1:44  
**Attendance:** 16,200

**Officials:** Kipp Kissinger, Brooks Wells, Amy Bonner

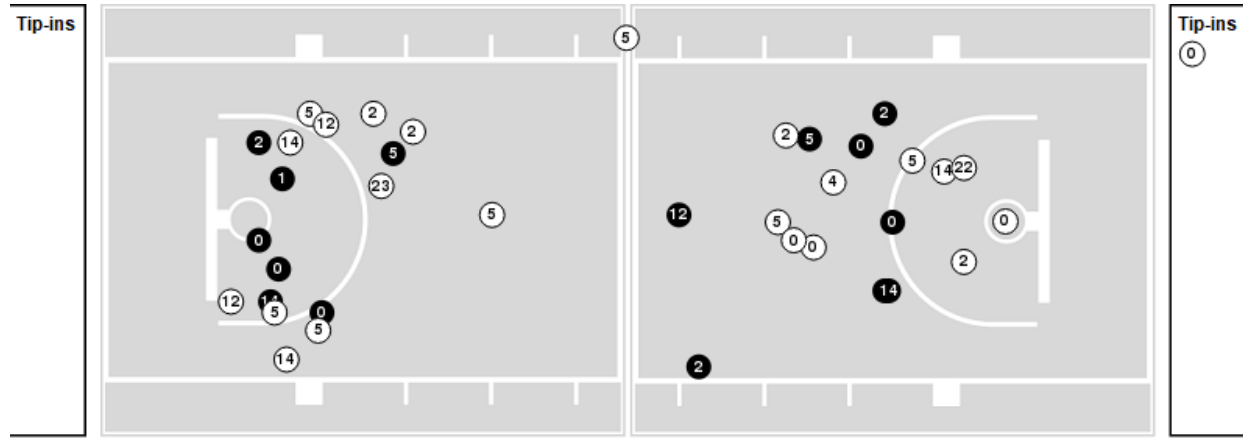
Players => 0, 1, 2, 3, 4, 5, 10, 12, 13, 14, 20, 21, 22, 23, 30, 32FG Types=>AllResults=>All

**Emporia St.**

**All Field Goals**



**Blow Up Chart**



● Made ○ Missed N - Player Number

Emporia St.	M/A	%
Field Goals	21/61	34
2 Points	17/41	41
3 Points	4/20	20
Free Throws	14/17	82

Emporia St.	M/A	%
Points in the Paint	30 (15 / 36)	42
Fast Break Points	0 (0/0)	0
Second Chance Points	4 (3/8)	38
Effective FG%	38	

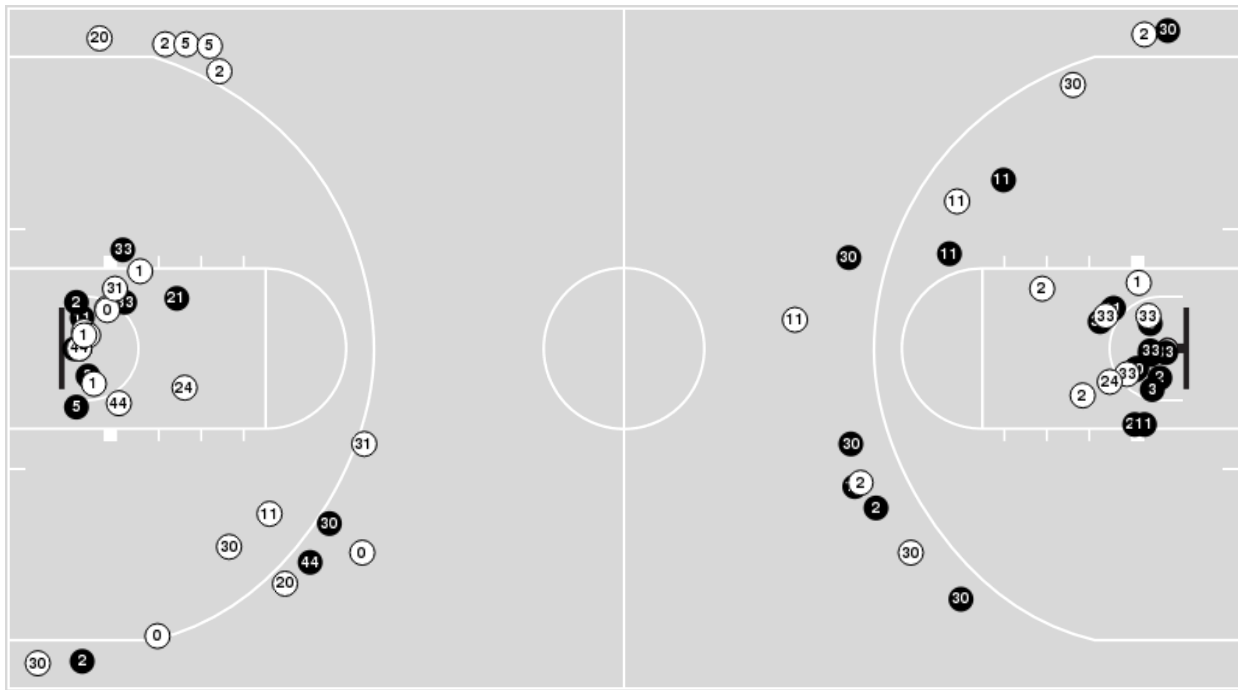


**Officials:** Kipp Kissinger, Brooks Wells, Amy Bonner

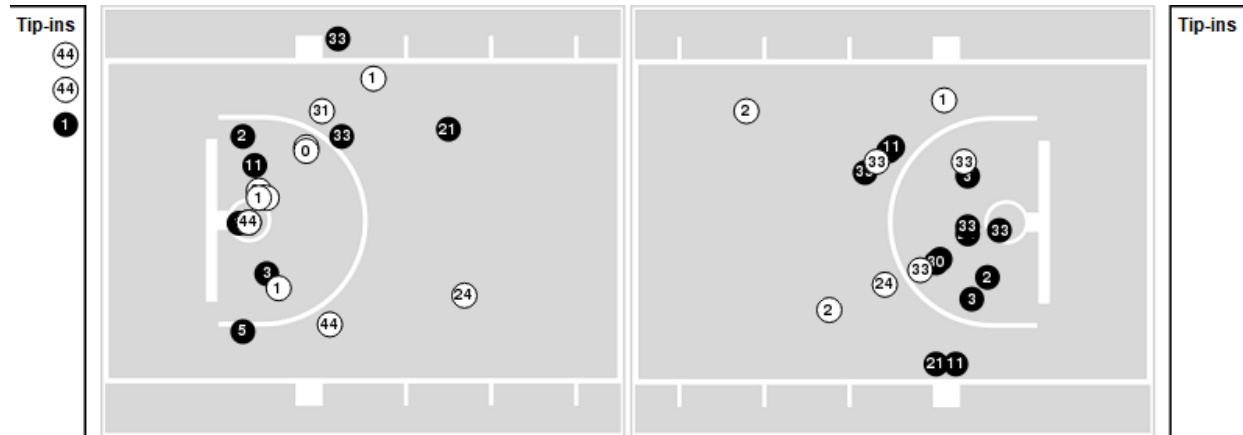
Players => 0, 1, 2, 3, 5, 10, 11, 12, 13, 15, 20, 21, 24, 30, 31, 33, 44, 55FG Types=>AllResults=>All

### Kansas

#### All Field Goals



#### Blow Up Chart



● Made ○ Missed N - Player Number

Kansas	M/A	%
Field Goals	33/70	47
2 Points	24/48	50
3 Points	9/22	41
Free Throws	11/11	100

Kansas	M/A	%
Points in the Paint	42 (21 / 40)	53
Fast Break Points	15 (7/7)	100
Second Chance Points	7 (4/10)	40
Effective FG%	54	



**Emporia St. at Kansas**

11/03/21 Allen Fieldhouse, Lawrence  
2021-22 Men's Basketball

**Game Time:** 7:00 PM  
**Game Duration:** 1:44  
**Attendance:** 16,200

**Officials:** Kipp Kissinger, Brooks Wells, Amy Bonner

**Emporia St.**

Lineup	Quarter On	Time On	Quarter Off	Time Off	Time on Court	Score	Score Diff	Reb	Stl	Tov	Ass	PPP
0- Buom M/ 2- Buchanan T/ 4- Evans K/ 5- Turner J/ 30- Thiessen M/	1	20:00	1	15:58	04:02	5-8	-3	4	1	3	0	0.6720
2- Buchanan T/ 4- Evans K/ 5- Turner J/ 14- McGuire G/ 23- Nance A/	1	15:58	1	11:55	04:03	8-11	-3	1	2	1	1	0.9009
0- Buom M/ 1- Rogers-Schmidt P/ 3- Haddock B/ 4- Evans K/ 12- McCray M/	1	11:55	1	07:29	04:26	7-11	-4	3	0	3	2	0.8750
2- Buchanan T/ 3- Haddock B/ 5- Turner J/ 14- McGuire G/ 30- Thiessen M/	1	07:29	1	05:53	01:36	2-5	-3	1	0	1	0	0.6667
3- Haddock B/ 4- Evans K/ 5- Turner J/ 14- McGuire G/ 30- Thiessen M/	1	05:53	1	03:25	02:28	0-4	-4	4	0	1	0	0.0000
1- Rogers-Schmidt P/ 2- Buchanan T/ 4- Evans K/ 5- Turner J/ 23- Nance A/	1	03:25	1	01:32	01:53	0-5	-5	1	0	0	0	0.0000
0- Buom M/ 1- Rogers-Schmidt P/ 3- Haddock B/ 4- Evans K/ 5- Turner J/	1	01:32	2	20:00	01:32	3-7	-4	0	0	1	0	1.0000
0- Buom M/ 2- Buchanan T/ 4- Evans K/ 5- Turner J/ 30- Thiessen M/	2	20:00	2	16:53	03:07	8-6	2	1	1	0	1	1.3333
0- Buom M/ 4- Evans K/ 5- Turner J/ 20- Johnson P/ 30- Thiessen M/	2	16:53	2	14:55	01:58	0-6	-6	1	0	0	0	0.0000
0- Buom M/ 2- Buchanan T/ 3- Haddock B/ 4- Evans K/ 14- McGuire G/	2	14:55	2	13:39	01:16	4-3	1	1	0	0	0	1.3889
0- Buom M/ 3- Haddock B/ 4- Evans K/ 12- McCray M/ 14- McGuire G/	2	13:39	2	11:12	02:27	2-5	-3	2	0	1	1	0.5000
1- Rogers-Schmidt P/ 4- Evans K/ 5- Turner J/ 12- McCray M/ 23- Nance A/	2	11:12	2	09:55	01:17	3-4	-1	0	0	0	1	1.5000
5- Turner J/ 12- McCray M/ 14- McGuire G/ 23- Nance A/ 30- Thiessen M/	2	09:55	2	09:32	00:23	1-0	1	0	0	0	0	2.2727
2- Buchanan T/ 5- Turner J/ 14- McGuire G/ 23- Nance A/ 30- Thiessen M/	2	09:32	2	08:29	01:03	5-3	2	2	0	0	1	2.6596
2- Buchanan T/ 5- Turner J/ 22- Collins G/ 23- Nance A/ 30- Thiessen M/	2	08:29	2	06:41	01:48	3-2	1	2	0	1	0	0.8721
0- Buom M/ 2- Buchanan T/ 5- Turner J/ 14- McGuire G/ 30- Thiessen M/	2	06:41	2	04:16	02:25	4-2	2	5	1	1	0	0.6329
0- Buom M/ 2- Buchanan T/ 5- Turner J/ 14- McGuire G/ 32- Tshibangu K/	2	04:16	2	03:39	00:37	1-0	1	2	0	0	0	2.2727
1- Rogers-Schmidt P/ 2- Buchanan T/ 4- Evans K/ 5- Turner J/ 23- Nance A/	2	03:39	2	03:11	00:28	0-0	0	0	0	0	0	0.0000
1- Rogers-Schmidt P/ 2- Buchanan T/ 3- Haddock B/ 4- Evans K/ 23- Nance A/	2	03:11	2	02:53	00:18	2-0	2	0	0	0	0	2.2727
0- Buom M/ 1- Rogers-Schmidt P/ 3- Haddock B/ 4- Evans K/ 23- Nance A/	2	02:53	2	00:50	02:02	0-2	-2	3	1	1	0	0.0000
0- Buom M/ 12- McCray M/ 20- Johnson P/ 22- Collins G/ 32- Tshibangu K/	2	00:50	2	00:31	00:20	0-0	0	1	0	0	0	0.0000
12- McCray M/ 20- Johnson P/ 22- Collins G/ 30- Thiessen M/ 32- Tshibangu K/	2	00:31	2	00:00	00:31	2-2	0	0	0	0	0	2.0000



**Emporia St. at Kansas**

11/03/21 Allen Fieldhouse, Lawrence  
2021-22 Men's Basketball

**Game Time:** 7:00 PM  
**Game Duration:** 1:44  
**Attendance:** 16,200

**Officials:** Kipp Kissinger, Brooks Wells, Amy Bonner

**Kansas**

Lineup	Quarter On	Time On	Quarter Off	Time Off	Time on Court	Score	Score Diff	Reb	Stl	Tov	Ass	PPP
2- Braun C/3- Harris D/12- Teahan C/30- Agbaji O/33- McCormack D/	1	20:00	1	15:58	04:02	8-5	3	3	1	1	2	1.0000
1- Yesufu J/2- Braun C/3- Harris D/30- Agbaji O/44- Lightfoot M/	1	15:58	1	13:36	02:22	7-6	1	1	1	2	3	1.4000
1- Yesufu J/2- Braun C/11- Martin R/30- Agbaji O/44- Lightfoot M/	1	13:36	1	11:55	01:41	4-2	2	3	0	1	0	1.0000
1- Yesufu J/3- Harris D/11- Martin R/21- Clemence Z/30- Agbaji O/	1	11:55	1	09:45	02:10	6-5	1	1	1	0	2	1.5000
0- Pettiford B/1- Yesufu J/2- Braun C/11- Martin R/21- Clemence Z/	1	09:45	1	09:45	00:00	0-0	0	0	0	0	0	0.0000
0- Pettiford B/1- Yesufu J/2- Braun C/11- Martin R/31- Martin C/	1	09:45	1	07:29	02:16	5-2	3	1	1	0	0	1.6667
0- Pettiford B/2- Braun C/3- Harris D/24- Adams, Jr. K/31- Martin C/	1	07:29	1	05:53	01:36	5-2	3	2	1	0	1	1.4535
0- Pettiford B/2- Braun C/3- Harris D/24- Adams, Jr. K/33- McCormack D/	1	05:53	1	03:25	02:28	4-0	4	3	1	0	2	1.0000
0- Pettiford B/11- Martin R/24- Adams, Jr. K/30- Agbaji O/33- McCormack D/	1	03:25	1	01:56	01:29	4-0	4	2	0	0	1	1.6393
1- Yesufu J/11- Martin R/24- Adams, Jr. K/30- Agbaji O/33- McCormack D/	1	01:56	2	20:00	01:56	8-3	5	2	1	0	1	2.3256
2- Braun C/3- Harris D/12- Teahan C/30- Agbaji O/33- McCormack D/	2	20:00	2	17:19	02:41	5-8	-3	2	0	1	0	1.1574
2- Braun C/3- Harris D/11- Martin R/30- Agbaji O/33- McCormack D/	2	17:19	2	14:55	02:24	7-0	7	4	0	0	1	1.5766
0- Pettiford B/1- Yesufu J/11- Martin R/30- Agbaji O/44- Lightfoot M/	2	14:55	2	11:12	03:43	8-6	2	8	1	0	1	1.3333
0- Pettiford B/1- Yesufu J/2- Braun C/3- Harris D/44- Lightfoot M/	2	11:12	2	11:12	00:00	2-0	2	0	0	0	0	2.2727
0- Pettiford B/1- Yesufu J/2- Braun C/3- Harris D/21- Clemence Z/	2	11:12	2	06:41	04:31	7-12	-5	2	1	2	3	0.8750
5- Cuffe, Jr. K/11- Martin R/24- Adams, Jr. K/30- Agbaji O/31- Martin C/	2	06:41	2	05:50	00:51	0-0	0	2	0	0	0	0.0000
1- Yesufu J/5- Cuffe, Jr. K/11- Martin R/24- Adams, Jr. K/31- Martin C/	2	05:50	2	04:16	01:34	2-4	-2	3	1	1	1	0.5000
0- Pettiford B/1- Yesufu J/5- Cuffe, Jr. K/24- Adams, Jr. K/31- Martin C/	2	04:16	2	03:39	00:37	0-1	-1	0	0	0	0	0.0000
0- Pettiford B/5- Cuffe, Jr. K/20- Jankovich M/24- Adams, Jr. K/31- Martin C/	2	03:39	2	02:53	00:46	0-2	-2	1	0	1	0	0.0000
0- Pettiford B/5- Cuffe, Jr. K/20- Jankovich M/21- Clemence Z/24- Adams, Jr. K/	2	02:53	2	00:00	02:53	4-2	2	5	0	1	0	0.6803



**Emporia St. at Kansas**

11/03/21 Allen Fieldhouse, Lawrence  
2021-22 Men's Basketball

**Game Time:** 7:00 PM  
**Game Duration:** 1:44  
**Attendance:** 16,200

**Officials:** Kipp Kissinger, Brooks Wells, Amy Bonner

**Emporia St.**

Lineup	Time	Score	Score Diff	Pts/Min	Reb	Stl	Tov	Ass	PPP
0- Buom M/ 2- Buchanan T/ 4- Evans K/ 5- Turner J/ 30- Thiessen M/	07:09	13-14	-1	1.8182	5	2	3	1	0.9673
0- Buom M/ 1- Rogers-Schmidt P/ 3- Haddock B/ 4- Evans K/ 12- McCray M/	04:26	7-11	-4	1.5789	3	0	3	2	0.8750
2- Buchanan T/ 4- Evans K/ 5- Turner J/ 14- McGuire G/ 23- Nance A/	04:03	8-11	-3	1.9753	1	2	1	1	0.9009
3- Haddock B/ 4- Evans K/ 5- Turner J/ 14- McGuire G/ 30- Thiessen M/	02:28	0-4	-4	0.0000	4	0	1	0	0.0000
0- Buom M/ 3- Haddock B/ 4- Evans K/ 12- McCray M/ 14- McGuire G/	02:27	2-5	-3	0.8163	2	0	1	1	0.5000
0- Buom M/ 2- Buchanan T/ 5- Turner J/ 14- McGuire G/ 30- Thiessen M/	02:25	4-2	2	1.6552	5	1	1	0	0.6329
1- Rogers-Schmidt P/ 2- Buchanan T/ 4- Evans K/ 5- Turner J/ 23- Nance A/	02:21	0-5	-5	0.0000	1	0	0	0	0.0000
0- Buom M/ 1- Rogers-Schmidt P/ 3- Haddock B/ 4- Evans K/ 23- Nance A/	02:02	0-2	-2	0.0000	3	1	1	0	0.0000
0- Buom M/ 4- Evans K/ 5- Turner J/ 20- Johnson P/ 30- Thiessen M/	01:58	0-6	-6	0.0000	1	0	0	0	0.0000
2- Buchanan T/ 5- Turner J/ 22- Collins G/ 23- Nance A/ 30- Thiessen M/	01:48	3-2	1	1.6667	2	0	1	0	0.8721
2- Buchanan T/ 3- Haddock B/ 5- Turner J/ 14- McGuire G/ 30- Thiessen M/	01:36	2-5	-3	1.2500	1	0	1	0	0.6667
0- Buom M/ 1- Rogers-Schmidt P/ 3- Haddock B/ 4- Evans K/ 5- Turner J/	01:32	3-7	-4	1.9565	0	0	1	0	1.0000
1- Rogers-Schmidt P/ 4- Evans K/ 5- Turner J/ 12- McCray M/ 23- Nance A/	01:17	3-4	-1	2.3377	0	0	0	1	1.5000
0- Buom M/ 2- Buchanan T/ 3- Haddock B/ 4- Evans K/ 14- McGuire G/	01:16	4-3	1	3.1579	1	0	0	0	1.3889
2- Buchanan T/ 5- Turner J/ 14- McGuire G/ 23- Nance A/ 30- Thiessen M/	01:03	5-3	2	4.7619	2	0	0	1	2.6596
0- Buom M/ 2- Buchanan T/ 5- Turner J/ 14- McGuire G/ 32- Tshibangu K/	00:37	1-0	1	1.6216	2	0	0	0	2.2727
12- McCray M/ 20- Johnson P/ 22- Collins G/ 30- Thiessen M/ 32- Tshibangu K/	00:31	2-2	0	3.8710	0	0	0	0	2.0000
5- Turner J/ 12- McCray M/ 14- McGuire G/ 23- Nance A/ 30- Thiessen M/	00:23	1-0	1	2.6087	0	0	0	0	2.2727
0- Buom M/ 12- McCray M/ 20- Johnson P/ 22- Collins G/ 32- Tshibangu K/	00:20	0-0	0	0.0000	1	0	0	0	0.0000
1- Rogers-Schmidt P/ 2- Buchanan T/ 3- Haddock B/ 4- Evans K/ 23- Nance A/	00:18	2-0	2	6.6667	0	0	0	0	2.2727



**Emporia St. at Kansas**

11/03/21 Allen Fieldhouse, Lawrence  
2021-22 Men's Basketball

**Game Time:** 7:00 PM  
**Game Duration:** 1:44  
**Attendance:** 16,200

**Officials:** Kipp Kissinger, Brooks Wells, Amy Bonner

**Kansas**

Lineup	Time	Score	Score Diff	Pts/Min	Reb	Stl	Tov	Ass	PPP
2- Braun C/ 3- Harris D/ 12- Teahan C/ 30- Agbaji O/ 33- McCormack D/	06:43	13-13	0	1.9355	5	1	2	2	1.0552
0- Pettiford B/ 1- Yesufu J/ 2- Braun C/ 3- Harris D/ 21- Clemence Z/	04:31	7-12	-5	1.5498	2	1	2	3	0.8750
0- Pettiford B/ 1- Yesufu J/ 11- Martin R/ 30- Agbaji O/ 44- Lightfoot M/	03:43	8-6	2	2.1525	8	1	0	1	1.3333
0- Pettiford B/ 5- Cuffe, Jr. K/ 20- Jankovich M/ 21- Clemence Z/ 24- Adams, Jr. K/	02:53	4-2	2	1.3873	5	0	1	0	0.6803
0- Pettiford B/ 2- Braun C/ 3- Harris D/ 24- Adams, Jr. K/ 33- McCormack D/	02:28	4-0	4	1.6216	3	1	0	2	1.0000
2- Braun C/ 3- Harris D/ 11- Martin R/ 30- Agbaji O/ 33- McCormack D/	02:24	7-0	7	2.9167	4	0	0	1	1.5766
1- Yesufu J/ 2- Braun C/ 3- Harris D/ 30- Agbaji O/ 44- Lightfoot M/	02:22	7-6	1	2.9577	1	1	2	3	1.4000
0- Pettiford B/ 1- Yesufu J/ 2- Braun C/ 11- Martin R/ 31- Martin C/	02:16	5-2	3	2.2059	1	1	0	0	1.6667
1- Yesufu J/ 3- Harris D/ 11- Martin R/ 21- Clemence Z/ 30- Agbaji O/	02:10	6-5	1	2.7692	1	1	0	2	1.5000
1- Yesufu J/ 11- Martin R/ 24- Adams, Jr. K/ 30- Agbaji O/ 33- McCormack D/	01:56	8-3	5	4.1379	2	1	0	1	2.3256
1- Yesufu J/ 2- Braun C/ 11- Martin R/ 30- Agbaji O/ 44- Lightfoot M/	01:41	4-2	2	2.3762	3	0	1	0	1.0000
0- Pettiford B/ 2- Braun C/ 3- Harris D/ 24- Adams, Jr. K/ 31- Martin C/	01:36	5-2	3	3.1250	2	1	0	1	1.4535
1- Yesufu J/ 5- Cuffe, Jr. K/ 11- Martin R/ 24- Adams, Jr. K/ 31- Martin C/	01:34	2-4	-2	1.2766	3	1	1	1	0.5000
0- Pettiford B/ 11- Martin R/ 24- Adams, Jr. K/ 30- Agbaji O/ 33- McCormack D/	01:29	4-0	4	2.6966	2	0	0	1	1.6393
5- Cuffe, Jr. K/ 11- Martin R/ 24- Adams, Jr. K/ 30- Agbaji O/ 31- Martin C/	00:51	0-0	0	0.0000	2	0	0	0	0.0000
0- Pettiford B/ 5- Cuffe, Jr. K/ 20- Jankovich M/ 24- Adams, Jr. K/ 31- Martin C/	00:46	0-2	-2	0.0000	1	0	1	0	0.0000
0- Pettiford B/ 1- Yesufu J/ 5- Cuffe, Jr. K/ 24- Adams, Jr. K/ 31- Martin C/	00:37	0-1	-1	0.0000	0	0	0	0	0.0000
0- Pettiford B/ 1- Yesufu J/ 2- Braun C/ 11- Martin R/ 21- Clemence Z/	00:00	0-0	0	NaN	0	0	0	0	0.0000
0- Pettiford B/ 1- Yesufu J/ 2- Braun C/ 3- Harris D/ 44- Lightfoot M/	00:00	2-0	2	∞	0	0	0	0	2.2727