



Officials: Pat Adams, Byron Jarrett, Jeb Hartness

#6/6 Kansas - 95

Record: 9-1

NO.	Name	Min	FG			Rebounds			Fouls		TP	AS	TO	ST	Blocks		+/-
			M-A	M-A	M-A	OR	DR	TOT	PF	FD					BS	BA	
10	Jalen Wilson	F 33:25	7-16	3-7	7-8	3	7	10	3	4	24	2	1	3	0	0	31
24	KJ Adams, Jr.	F 32:15	9-11	0-0	1-2	3	3	6	2	2	19	3	3	2	1	0	27
3	Dajuan Harris	G 32:27	2-2	0-0	2-2	0	2	2	2	3	6	9	2	2	0	0	33
4	Gradey Dick	G 31:34	6-11	3-5	1-2	0	7	7	3	2	16	5	3	1	0	1	25
15	Kevin McCullar	G 28:17	8-12	2-6	3-3	1	3	4	2	5	21	3	2	5	0	0	20
0	Bobby Pettiford	11:59	1-2	0-0	0-0	0	2	2	2	1	2	1	0	0	0	0	5
23	Ernest Udeh Jr.	02:55	0-0	0-0	0-0	0	0	0	1	1	0	1	0	0	0	0	5
1	Joseph Yesufu	14:56	1-3	1-2	1-2	0	0	0	2	1	4	0	1	0	0	0	-5
11	MJ Rice	03:46	0-1	0-1	0-0	0	0	0	1	0	0	0	0	0	0	0	-2
31	Cam Martin	02:16	0-1	0-0	0-0	0	0	0	0	1	0	0	0	0	0	1	-6
21	Zach Clemence	02:34	0-0	0-0	0-0	0	0	0	0	0	0	0	0	0	0	0	2
35	Zuby Ejiofor	02:02	0-1	0-0	0-0	0	3	3	1	0	0	0	1	0	0	0	-1
20	Michael Jankovich	00:47	1-1	1-1	0-0	0	0	0	0	0	3	0	0	0	0	0	3
22	Dillon Wilhite	00:47	0-0	0-0	0-0	0	0	0	0	0	0	0	0	0	0	0	3
Team						1	0	1			0		1				
<b>Totals</b>			35-61	10-22	15-19	8	27	35	19	20	95	24	14	13	1	2	28

Shooting By Period		
1st FG%	20-31	64.5%
3PT%	6-10	60.0%
FT%	4-6	66.7%
2nd FG%	15-30	50.0%
3PT%	4-12	33.3%
FT%	11-13	84.6%
GM FG%	35-61	57.4%
3PT%	10-22	45.5%
FT%	15-19	78.9%

Dead Ball Rebounds: 0, 0

Technical Fouls::NONE

Missouri - 67

Record: 9-1

NO.	Name	Min	FG			Rebounds			Fouls		TP	AS	TO	ST	Blocks		+/-
			M-A	M-A	M-A	OR	DR	TOT	PF	FD					BS	BA	
24	Kobe Brown	F 19:30	1-5	0-1	2-2	2	4	6	3	2	4	0	3	0	0	0	-17
35	Noah Carter	F 23:17	4-8	1-3	3-4	2	5	7	3	4	12	0	2	0	1	0	-10
4	DeAndre Gholston	G 23:02	4-11	0-1	3-4	1	1	2	4	5	11	0	4	1	0	0	-30
5	D'Moi Hodge	G 28:11	4-10	4-9	3-6	1	6	7	3	3	15	1	1	2	0	0	-30
10	Nick Honor	G 31:48	6-8	1-2	2-2	0	0	0	2	1	15	5	3	1	0	0	-21
2	Tre Gomillion	15:56	2-5	0-1	2-5	2	1	3	1	4	6	1	6	0	0	0	-14
55	Sean East II	26:07	1-5	0-2	0-0	0	1	1	3	0	2	1	2	0	0	0	-9
23	Aidan Shaw	22:24	1-3	0-1	0-0	0	0	0	1	0	2	0	0	1	1	1	1
13	Ronnie DeGray III	08:58	0-2	0-0	0-0	2	1	3	0	0	0	0	0	0	0	0	-7
31	Ben Sternberg	00:47	0-0	0-0	0-0	0	0	0	0	0	0	0	0	0	0	0	-3
Team						2	2	4			0		0				
<b>Totals</b>			23-57	6-20	15-23	12	21	33	20	19	67	8	21	5	2	1	-28

Shooting By Period		
1st FG%	12-36	33.3%
3PT%	3-13	23.1%
FT%	6-9	66.7%
2nd FG%	11-21	52.4%
3PT%	3-7	42.9%
FT%	9-14	64.3%
GM FG%	23-57	40.4%
3PT%	6-20	30.0%
FT%	15-23	65.2%

Dead Ball Rebounds: 3, 1

Technical Fouls::NONE

	Kansas	Mizzou
Biggest lead	29 (2 <sup>nd</sup> 2:11)	2 (1 <sup>st</sup> 19:07)
Best Scoring Run	10 (2 <sup>nd</sup> 17:42)	6 (2 <sup>nd</sup> 9:41)
Lead Changes	1	
Times Tied	2	
Time with Lead	37:50	00:39

Points from	Kansas	Mizzou
Turnovers	28	15
Paint	46	28
Second Chance	8	4
Fast Breaks	22	10
Bench	9	10

	Period by Period Scoring		
	1st	2nd	TOT
Kansas	50	45	95
Mizzou	33	34	67



Period 1

Quarter Starters:

Mizzou	4 Gholston D	5 Hodge D	10 Honor N	24 Brown K	35 Carter N
Kansas	3 Harris D	4 Dick G	10 Wilson J	15 McCullar K	24 Adams, Jr. K

Game Time	Mizzou	Score	Diff	Kansas
20:00	35 CARTER N jumpball won			24 ADAMS, JR. K jumpball lost
19:56	10 HONOR N turnover bad pass (1)			
19:33				24 ADAMS, JR. K 2pt FG from turnover in the paint, layup missed
19:30				10 WILSON J offensive rebound (1)
19:29				10 WILSON J 2pt FG from turnover second chance in the paint, layup missed
19:26	4 GHOLSTON D defensive rebound (1)			
19:07	24 BROWN K 2pt FG in the paint, layup made (2)	2-0	2	
19:07	5 HODGE D assist (1)			
18:46		2-2	0	4 DICK G 2pt FG in the paint, layup made (2)
18:23	4 GHOLSTON D 2pt FG in the paint, layup made (2)	4-2	2	
18:05		4-4	0	24 ADAMS, JR. K 2pt FG in the paint, layup made (2)
18:05				15 MCCULLAR K assist (1)
17:59	5 HODGE D 3pt FG , jump shot missed			
17:57				10 WILSON J defensive rebound (2)
17:50		4-7	-3	15 MCCULLAR K 3pt FG , jump shot made (3)
17:29	10 HONOR N foul drawn (1)			24 ADAMS, JR. K foul shooting (1 - 1)
17:29	10 HONOR N free throw 1 - 2 made (1)	5-7	-2	
17:29	10 HONOR N free throw 2 - 2 made (2)	6-7	-1	
17:13		6-9	-3	24 ADAMS, JR. K 2pt FG in the paint, layup made (4)
17:13				3 HARRIS D assist (1)
17:13	35 CARTER N foul shooting (1 - 1)			24 ADAMS, JR. K foul drawn (1)
17:13	35 CARTER N substitution out			
17:13	2 GOMILLION T substitution in			
17:13		6-10	-4	24 ADAMS, JR. K free throw 1 - 1 made (5)
16:58	2 GOMILLION T turnover bad pass (1)			24 ADAMS, JR. K steal (1)
16:53		6-12	-6	10 WILSON J 2pt FG from turnover in the paint, layup made (2)
16:53				4 DICK G assist (1)
16:48	4 GHOLSTON D foul drawn (1)			15 MCCULLAR K foul personal (1 - 2)
16:42	5 HODGE D 3pt FG , jump shot made (3)	9-12	-3	
16:42	2 GOMILLION T assist (1)			
16:15		9-14	-5	4 DICK G 2pt FG outside the paint, jump shot made (4)
16:15				3 HARRIS D assist (2)
16:05	4 GHOLSTON D 2pt FG in the paint, layup missed			
16:02				4 DICK G defensive rebound (1)
15:58		9-16	-7	15 MCCULLAR K 2pt FG fast break in the paint, layup made (5)
15:58				4 DICK G assist (2)
15:35	24 BROWN K 2pt FG in the paint, jump shot missed			
15:31	5 HODGE D offensive rebound (1)			
15:30	5 HODGE D 3pt FG second chance, jump shot missed			
15:28				4 DICK G defensive rebound (2)
15:25	5 HODGE D foul shooting (1 - 2)			15 MCCULLAR K foul drawn (1)
15:25	4 GHOLSTON D substitution out			



Game Time	Mizzou	Score	Diff	Kansas
15:25	55 EAST II S substitution in			
15:25				15 MCCULLAR K substitution out
15:25				24 ADAMS, JR. K substitution out
15:25				0 PETTIFORD B substitution in
15:25				23 UDEH JR. E substitution in
15:25		9-17	-8	10 WILSON J free throw fast break 1 - 2 made (3)
15:25		9-18	-9	10 WILSON J free throw fast break 2 - 2 made (4)
15:10	24 BROWN K foul drawn (1)			23 UDEH JR. E foul personal (1 - 3)
14:55	24 BROWN K 3pt FG , jump shot missed			
14:52	2 GOMILLION T offensive rebound (1)			
14:50	2 GOMILLION T turnover lost ball (2)			10 WILSON J steal (1)
14:45		9-21	-12	4 DICK G 3pt FG fast break from turnover, jump shot made (7)
14:33	2 GOMILLION T 2pt FG in the paint, layup made (2)	11-21	-10	
14:33	2 GOMILLION T foul drawn (1)			0 PETTIFORD B foul shooting (1 - 4)
14:33	5 HODGE D substitution out			
14:33	10 HONOR N substitution out			
14:33	4 GHOLSTON D substitution in			
14:33	35 CARTER N substitution in			
14:33	2 GOMILLION T free throw 1 - 1 made (3)	12-21	-9	
14:12		12-24	-12	4 DICK G 3pt FG , jump shot made (10)
14:12				3 HARRIS D assist (3)
13:58	4 GHOLSTON D 2pt FG in the paint, layup missed			
13:56				10 WILSON J defensive rebound (3)
13:51		12-26	-14	4 DICK G 2pt FG fast break in the paint, layup made (12)
13:51				10 WILSON J assist (1)
13:50	Timeout 30 Sec			
13:50	55 EAST II S substitution out			
13:50	23 SHAW A substitution in			
13:43	24 BROWN K substitution out			
13:43	55 EAST II S substitution in			
13:35	35 CARTER N 2pt FG in the paint, layup made (2)	14-26	-12	
12:57		14-28	-14	3 HARRIS D 2pt FG in the paint, layup made (2)
12:57				23 UDEH JR. E assist (1)
12:47	55 EAST II S 3pt FG , jump shot missed			
12:40	2 GOMILLION T offensive rebound (2)			
12:40	2 GOMILLION T 2pt FG second chance in the paint, layup missed			
12:38	35 CARTER N offensive rebound (1)			
12:38	35 CARTER N 2pt FG second chance in the paint, layup made (4)	16-28	-12	
12:30	4 GHOLSTON D foul personal (1 - 3)			23 UDEH JR. E foul drawn (1)
12:30				3 HARRIS D substitution out
12:30				23 UDEH JR. E substitution out
12:30				15 MCCULLAR K substitution in
12:30				24 ADAMS, JR. K substitution in
12:24				24 ADAMS, JR. K turnover lost ball (1)
12:24	2 GOMILLION T 3pt FG from turnover, jump shot missed			
12:23				10 WILSON J defensive rebound (4)
12:22	23 SHAW A steal (1)			4 DICK G turnover lost ball (1)
12:08	35 CARTER N 3pt FG from turnover, jump shot missed			



Game Time	Mizzou	Score	Diff	Kansas
12:08				15 MCCULLAR K defensive rebound (1)
12:08				15 MCCULLAR K 3pt FG , jump shot missed
12:08	55 EAST II S defensive rebound (1)			
12:07	35 CARTER N 2pt FG in the paint, layup missed			
12:04	offensive rebound (7)			
11:19	Timeout media			
11:19				4 DICK G substitution out
11:19				3 HARRIS D substitution in
11:17	2 GOMILLION T turnover bad pass (3)			15 MCCULLAR K steal (1)
11:14		16-30	-14	15 MCCULLAR K 2pt FG fast break from turnover in the paint, dunk, made (7)
10:50	2 GOMILLION T foul drawn (2)			0 PETTIFORD B foul shooting (2 - 5)
10:50	2 GOMILLION T free throw 1 - 2 missed			
10:50	offensive dead ball rebound (1)			
10:50	4 GHOLSTON D substitution out			
10:50	35 CARTER N substitution out			
10:50	55 EAST II S substitution out			
10:50	5 HODGE D substitution in			
10:50	10 HONOR N substitution in			
10:50	24 BROWN K substitution in			
10:50				0 PETTIFORD B substitution out
10:50				1 YESUFU J substitution in
10:48	2 GOMILLION T free throw 2 - 2 missed			
10:47	24 BROWN K offensive rebound (1)			
10:36	2 GOMILLION T turnover bad pass (4)			3 HARRIS D steal (1)
10:13	2 GOMILLION T foul drawn (3)			15 MCCULLAR K foul offensive (2 - 6)
10:13				15 MCCULLAR K turnover offensive (1)
10:13				15 MCCULLAR K substitution out
10:13				4 DICK G substitution in
10:13	2 GOMILLION T substitution out			
10:13	13 DEGRAY III R substitution in			
10:01	23 SHAW A 2pt FG from turnover in the paint, jump shot blocked			
10:01				24 ADAMS, JR. K block (1)
09:57	offensive rebound (9)			
09:54	24 BROWN K 2pt FG from turnover second chance outside the paint, jump shot missed			
09:47	13 DEGRAY III R offensive rebound (1)			
09:47	13 DEGRAY III R 2pt FG from turnover second chance in the paint, layup missed			
09:47	24 BROWN K offensive rebound (2)			
09:47	jump ball situation			
09:47	24 BROWN K turnover lost ball (1)			3 HARRIS D steal (2)
09:35	5 HODGE D steal (1)			10 WILSON J turnover lost ball (1)
09:32	5 HODGE D foul drawn (1)			3 HARRIS D foul shooting (1 - 7)
09:32	5 HODGE D free throw 1 - 2 missed			
09:32	offensive dead ball rebound (2)			
09:32	5 HODGE D free throw 2 - 2 made (4)	17-30	-13	
09:12				10 WILSON J 3pt FG , jump shot missed
09:09	5 HODGE D defensive rebound (2)			
09:06	5 HODGE D 2pt FG in the paint, layup missed			



#6/6 Kansas at Missouri

12/10/22 Mizzou Arena, Columbia  
2022-23 Men's Basketball

Game Time: 4:15 PM  
Game Duration: 2:13  
Attendance: 15,061

Officials: Pat Adams, Byron Jarrett, Jeb Hartness

Game Time	Mizzou	Score	Diff	Kansas
09:03	13 DEGRAY III R offensive rebound (2)			
09:02	10 HONOR N turnover lost ball (2)			10 WILSON J steal (2)
08:53		<b>17-33</b>	<b>-16</b>	4 DICK G 3pt FG from turnover, jump shot made (15)
08:53				10 WILSON J assist (2)
08:35	10 HONOR N 2pt FG in the paint, layup missed			
08:33				24 ADAMS, JR. K defensive rebound (1)
08:26		<b>17-36</b>	<b>-19</b>	1 YESUFU J 3pt FG , jump shot made (3)
08:26				4 DICK G assist (3)
08:16	Timeout 30 Sec			
08:16	10 HONOR N substitution out			
08:16	13 DEGRAY III R substitution out			
08:16	23 SHAW A substitution out			
08:16	4 GHOLSTON D substitution in			
08:16	35 CARTER N substitution in			
08:16	55 EAST II S substitution in			
08:16				10 WILSON J substitution out
08:16				11 RICE M substitution in
08:05	4 GHOLSTON D 2pt FG in the paint, layup made (4)	<b>19-36</b>	<b>-17</b>	
07:49				1 YESUFU J 2pt FG in the paint, jump shot missed
07:49	defensive rebound (14)			
07:36	4 GHOLSTON D 2pt FG in the paint, jump shot missed			
07:34				4 DICK G defensive rebound (3)
07:21				4 DICK G 3pt FG , jump shot missed
07:19	35 CARTER N defensive rebound (2)			
07:09	4 GHOLSTON D 3pt FG , jump shot missed			
07:06				4 DICK G defensive rebound (4)
06:46		<b>19-38</b>	<b>-19</b>	24 ADAMS, JR. K 2pt FG in the paint, dunk, made (7)
06:46				3 HARRIS D assist (4)
06:32	4 GHOLSTON D foul drawn (2)			11 RICE M foul shooting (1 - 8)
06:32	4 GHOLSTON D free throw 1 - 2 made (5)	<b>20-38</b>	<b>-18</b>	
06:32	5 HODGE D substitution out			
06:32	35 CARTER N substitution out			
06:32	10 HONOR N substitution in			
06:32	23 SHAW A substitution in			
06:32				11 RICE M substitution out
06:32				10 WILSON J substitution in
06:32	4 GHOLSTON D free throw 2 - 2 made (6)	<b>21-38</b>	<b>-17</b>	
06:24	23 SHAW A foul personal (1 - 4)			10 WILSON J foul drawn (1)
06:22				3 HARRIS D turnover bad pass (1)
06:18	55 EAST II S 3pt FG from turnover, jump shot missed			
06:14	4 GHOLSTON D offensive rebound (2)			
06:13	4 GHOLSTON D 2pt FG from turnover second chance outside the paint, jump shot missed			
06:10				10 WILSON J defensive rebound (5)
06:10	4 GHOLSTON D foul personal (2 - 5)			3 HARRIS D foul drawn (1)
05:58				4 DICK G 2pt FG in the paint, layup blocked
05:58	23 SHAW A block (1)			
05:58				offensive rebound (12)
05:52		<b>21-40</b>	<b>-19</b>	24 ADAMS, JR. K 2pt FG second chance in the paint, jump shot made (9)



#6/6 Kansas at Missouri

12/10/22 Mizzou Arena, Columbia  
2022-23 Men's Basketball

Game Time: 4:15 PM  
Game Duration: 2:13  
Attendance: 15,061

Officials: Pat Adams, Byron Jarrett, Jeb Hartness

Game Time	Mizzou	Score	Diff	Kansas
05:46	4 GHOLSTON D foul offensive (3 - 6)			4 DICK G foul drawn (1)
05:46	4 GHOLSTON D turnover offensive (1)			
05:46	4 GHOLSTON D substitution out			
05:46	5 HODGE D substitution in			
05:43				1 YESUFU J turnover travel (1)
05:27	5 HODGE D 3pt FG from turnover, jump shot made (7)	<b>24-40</b>	<b>-16</b>	
05:27	10 HONOR N assist (1)			
05:06	10 HONOR N steal (1)			24 ADAMS, JR. K turnover lost ball (2)
05:01	23 SHAW A 2pt FG fast break from turnover in the paint, layup made (2)	<b>26-40</b>	<b>-14</b>	
05:01	10 HONOR N assist (2)			
04:53				Timeout 30 Sec
04:53				1 YESUFU J substitution out
04:53				15 MCCULLAR K substitution in
04:31				10 WILSON J 2pt FG in the paint, layup missed
04:28				24 ADAMS, JR. K offensive rebound (2)
04:28				24 ADAMS, JR. K 2pt FG second chance in the paint, layup missed
04:28	defensive dead ball rebound (3)			
04:09	24 BROWN K turnover travel (2)			
03:53		<b>26-42</b>	<b>-16</b>	24 ADAMS, JR. K 2pt FG from turnover in the paint, dunk, made (11)
03:53				3 HARRIS D assist (5)
03:35	10 HONOR N 2pt FG in the paint, layup made (4)	<b>28-42</b>	<b>-14</b>	
03:22				3 HARRIS D turnover travel (2)
03:22	Timeout media			
03:22	24 BROWN K substitution out			
03:22	13 DEGRAY III R substitution in			
03:22				3 HARRIS D substitution out
03:22				0 PETTIFORD B substitution in
03:11	5 HODGE D 3pt FG from turnover, jump shot missed			
03:08				4 DICK G defensive rebound (5)
02:39				10 WILSON J 3pt FG , jump shot missed
02:39				24 ADAMS, JR. K offensive rebound (3)
02:39	55 EAST II S foul personal (1 - 7)			24 ADAMS, JR. K foul drawn (2)
02:38				24 ADAMS, JR. K 1&1 free throw 1 missed
02:37	5 HODGE D defensive rebound (3)			
02:21	13 DEGRAY III R 2pt FG in the paint, layup missed			
02:19				0 PETTIFORD B defensive rebound (1)
02:10				0 PETTIFORD B 2pt FG in the paint, jump shot missed
02:08	5 HODGE D defensive rebound (4)			
02:04	55 EAST II S 2pt FG in the paint, jump shot missed			
02:01				4 DICK G defensive rebound (6)
01:57		<b>28-44</b>	<b>-16</b>	24 ADAMS, JR. K 2pt FG fast break in the paint, dunk, made (13)
01:57				15 MCCULLAR K assist (2)
01:38	10 HONOR N 3pt FG , jump shot made (7)	<b>31-44</b>	<b>-13</b>	
01:26				0 PETTIFORD B substitution out
01:26				15 MCCULLAR K substitution out
01:26				1 YESUFU J substitution in



Official Basketball Play by Play - First Half

**#6/6 Kansas at Missouri**

12/10/22 Mizzou Arena, Columbia  
2022-23 Men's Basketball

**Game Time:** 4:15 PM  
**Game Duration:** 2:13  
**Attendance:** 15,061

**Officials:** Pat Adams, Byron Jarrett, Jeb Hartness

Game Time	Mizzou	Score	Diff	Kansas
01:26				3 HARRIS D substitution in
01:23		<b>31-47</b>	<b>-16</b>	10 WILSON J 3pt FG , jump shot made (7)
01:23				4 DICK G assist (4)
00:51	23 SHAW A 3pt FG , jump shot missed			
00:49				3 HARRIS D defensive rebound (1)
00:41		<b>31-49</b>	<b>-18</b>	24 ADAMS, JR. K 2pt FG in the paint, dunk, made (15)
00:41				3 HARRIS D assist (6)
00:06	55 EAST II S 2pt FG outside the paint, jump shot made (2)	<b>33-49</b>	<b>-16</b>	
00:00	10 HONOR N foul shooting (1 - 8)			1 YESUFU J foul drawn (1)
00:00		<b>33-50</b>	<b>-17</b>	1 YESUFU J free throw fast break 1 - 2 made (4)
00:00				1 YESUFU J free throw fast break 2 - 2 missed
00:00	5 HODGE D defensive rebound (5)			
<b>END OF PERIOD</b>				
<b>Mizzou 33-50 Kansas</b>				



#6/6 Kansas at Missouri

12/10/22 Mizzou Arena, Columbia  
2022-23 Men's Basketball

Game Time: 4:15 PM  
Game Duration: 2:13  
Attendance: 15,061

Officials: Pat Adams, Byron Jarrett, Jeb Hartness

#6/6 Kansas - 50

NO.	Name	F	Min	FG	3P	FT	Rebounds			Fouls		TP	AS	TO	ST	Blocks		+/-
				M-A	M-A	M-A	OR	DR	TOT	PF	FD					BS	BA	
10	Jalen Wilson	F	18:16	2-6	1-3	2-2	1	4	5	0	1	7	2	1	2	0	0	18
24	KJ Adams, Jr.	F	17:05	7-9	0-0	1-2	2	1	3	1	2	15	0	2	1	1	0	12
3	Dajuan Harris	G	16:53	1-1	0-0	0-0	0	1	1	1	1	2	6	2	2	0	0	18
4	Gradey Dick	G	18:54	6-8	3-4	0-0	0	6	6	0	1	15	4	1	0	0	1	15
15	Kevin McCullar	G	10:19	3-4	1-2	0-0	0	1	1	2	1	7	2	1	1	0	0	8
0	Bobby Pettiford		06:31	0-1	0-0	0-0	0	1	1	2	0	0	0	0	0	0	0	6
23	Ernest Udeh Jr.		02:55	0-0	0-0	0-0	0	0	0	1	1	0	1	0	0	0	0	5
1	Joseph Yesufu		07:23	1-2	1-1	1-2	0	0	0	0	1	4	0	1	0	0	0	4
11	MJ Rice		01:44	0-0	0-0	0-0	0	0	0	1	0	0	0	0	0	0	0	-1
Team							1	0	1			0		0				
<b>Totals</b>				20-31	6-10	4-6	4	14	18	8	8	50	15	8	6	1	1	17

Shooting By Period		
1st FG%	20-31	64.5%
3PT%	6-10	60.0%
FT%	4-6	66.7%
GM FG%	20-31	64.5%
3PT%	6-10	60.0%
FT%	4-6	66.7%

Dead Ball Rebounds: 0, 0

Technical Fouls::NONE

Missouri - 33

NO.	Name	F	Min	FG	3P	FT	Rebounds			Fouls		TP	AS	TO	ST	Blocks		+/-
				M-A	M-A	M-A	OR	DR	TOT	PF	FD					BS	BA	
24	Kobe Brown	F	13:45	1-4	0-1	0-0	2	0	2	0	1	2	0	2	0	0	0	-14
35	Noah Carter	F	08:14	2-4	0-1	0-0	1	1	2	1	0	4	0	0	0	0	0	-6
4	DeAndre Gholston	G	10:48	2-7	0-1	2-2	1	1	2	3	2	6	0	1	0	0	0	-11
5	D'Moi Hodge	G	15:31	2-6	2-5	1-2	1	4	5	1	1	7	1	0	1	0	0	-12
10	Nick Honor	G	14:33	2-3	1-1	2-2	0	0	0	1	1	7	2	2	1	0	0	-14
2	Tre Gomillion		07:00	1-3	0-1	1-3	2	0	2	0	3	3	1	4	0	0	0	-11
55	Sean East II		12:44	1-4	0-2	0-0	0	1	1	1	0	2	0	0	0	0	0	-5
23	Aidan Shaw		12:06	1-3	0-1	0-0	0	0	0	1	0	2	0	0	1	1	1	-4
13	Ronnie DeGray III		05:19	0-2	0-0	0-0	2	0	2	0	0	0	0	0	0	0	0	-8
Team							2	1	3			0		0				
<b>Totals</b>				12-36	3-13	6-9	11	8	19	8	8	33	4	9	3	1	1	-17

Shooting By Period		
1st FG%	12-36	33.3%
3PT%	3-13	23.1%
FT%	6-9	66.7%
GM FG%	12-36	33.3%
3PT%	3-13	23.1%
FT%	6-9	66.7%

Dead Ball Rebounds: 2, 1

Technical Fouls::NONE

	Kansas	Mizzou
Biggest lead	19 (1 <sup>st</sup> 8:26)	2 (1 <sup>st</sup> 19:07)
Best Scoring Run	9 (1 <sup>st</sup> 14:45)	5 (1 <sup>st</sup> 5:01)
Lead Changes	1	
Times Tied	2	
Time with Lead	17:50	00:39

	Kansas	Mizzou
Points from		
Turnovers	12	6
Paint	26	16
Second Chance	2	2
Fast Breaks	14	2
Bench	4	7

	Period by Period Scoring		
	1st	2nd	TOT
Kansas	50	45	95
Mizzou	33	34	67





#6/6 Kansas at Missouri

12/10/22 Mizzou Arena, Columbia  
2022-23 Men's Basketball

Game Time: 4:15 PM  
Game Duration: 2:13  
Attendance: 15,061

Officials: Pat Adams, Byron Jarrett, Jeb Hartness

Period 2

Quarter Starters:

Mizzou	4 Gholston D	5 Hodge D	10 Honor N	24 Brown K	35 Carter N
Kansas	3 Harris D	4 Dick G	10 Wilson J	15 McCullar K	24 Adams, Jr. K

Game Time	Mizzou	Score	Diff	Kansas
20:00	13 DEGRAY III R substitution out			
20:00	23 SHAW A substitution out			
20:00	55 EAST II S substitution out			
20:00	4 GHOLSTON D substitution in			
20:00	24 BROWN K substitution in			
20:00	35 CARTER N substitution in			
20:00				1 YESUFU J substitution out
20:00				15 MCCULLAR K substitution in
19:40	10 HONOR N turnover bad pass (3)			15 MCCULLAR K steal (2)
19:38	24 BROWN K foul shooting (1 - 1)			15 MCCULLAR K foul drawn (2)
19:38		<b>33-51</b>	<b>-18</b>	15 MCCULLAR K free throw fast break 1 - 2 made (8)
19:38		<b>33-52</b>	<b>-19</b>	15 MCCULLAR K free throw fast break 2 - 2 made (9)
19:27	4 GHOLSTON D turnover bad pass (2)			4 DICK G steal (1)
19:23		<b>33-54</b>	<b>-21</b>	3 HARRIS D 2pt FG fast break from turnover in the paint, layup made (4)
19:23				4 DICK G assist (5)
19:09	24 BROWN K 2pt FG in the paint, jump shot missed			
19:07				15 MCCULLAR K defensive rebound (2)
18:54		<b>33-57</b>	<b>-24</b>	10 WILSON J 3pt FG , jump shot made (10)
18:54				3 HARRIS D assist (7)
18:48	Timeout 30 Sec			
18:35	4 GHOLSTON D 2pt FG in the paint, layup missed			
18:33				4 DICK G defensive rebound (7)
18:24				15 MCCULLAR K 3pt FG , jump shot missed
18:20	24 BROWN K defensive rebound (3)			
18:20	24 BROWN K turnover bad pass (3)			15 MCCULLAR K steal (3)
17:59				10 WILSON J 3pt FG from turnover, jump shot missed
17:56	24 BROWN K defensive rebound (4)			
17:55	5 HODGE D turnover lost ball (1)			
17:55	24 BROWN K substitution out			
17:55	23 SHAW A substitution in			
17:55	5 HODGE D substitution out			
17:55	55 EAST II S substitution in			
17:42		<b>33-59</b>	<b>-26</b>	24 ADAMS, JR. K 2pt FG from turnover in the paint, layup made (17)
17:42				3 HARRIS D assist (8)
17:28	35 CARTER N 2pt FG in the paint, layup missed			
17:25	35 CARTER N offensive rebound (3)			
17:25	35 CARTER N 2pt FG second chance in the paint, layup made (6)	<b>35-59</b>	<b>-24</b>	
17:04	4 GHOLSTON D steal (1)			24 ADAMS, JR. K turnover lost ball (3)
17:00	4 GHOLSTON D 2pt FG fast break from turnover in the paint, layup made (8)	<b>37-59</b>	<b>-22</b>	
17:00	4 GHOLSTON D foul drawn (3)			4 DICK G foul shooting (1 - 1)



## #6/6 Kansas at Missouri

12/10/22 Mizzou Arena, Columbia  
2022-23 Men's Basketball

Game Time: 4:15 PM

Game Duration: 2:13

Attendance: 15,061

Officials: Pat Adams, Byron Jarrett, Jeb Hartness

Game Time	Mizzou	Score	Diff	Kansas
17:00	4 GHOLSTON D free throw fast break 1 - 1 made (9)	<b>38-59</b>	<b>-21</b>	
16:51	10 HONOR N foul shooting (2 - 2)			10 WILSON J foul drawn (2)
16:51		<b>38-60</b>	<b>-22</b>	10 WILSON J free throw 1 - 2 made (11)
16:50				10 WILSON J free throw 2 - 2 missed
16:49	35 CARTER N defensive rebound (4)			
16:32	55 EAST II S 2pt FG outside the paint, jump shot missed			
16:29				24 ADAMS, JR. K defensive rebound (4)
16:25				4 DICK G 2pt FG in the paint, layup missed
16:22				10 WILSON J offensive rebound (6)
16:22		<b>38-62</b>	<b>-24</b>	10 WILSON J 2pt FG second chance in the paint, layup made (13)
16:17	35 CARTER N foul drawn (1)			10 WILSON J foul shooting (1 - 2)
16:17	35 CARTER N free throw fast break 1 - 2 made (7)	<b>39-62</b>	<b>-23</b>	
16:17	4 GHOLSTON D substitution out			
16:17	13 DEGRAY III R substitution in			
16:17	35 CARTER N free throw fast break 2 - 2 made (8)	<b>40-62</b>	<b>-22</b>	
16:17	10 HONOR N substitution out			
16:17	2 GOMILLION T substitution in			
15:51	35 CARTER N foul shooting (2 - 3)			10 WILSON J foul drawn (3)
15:51				Timeout media
15:51		<b>40-63</b>	<b>-23</b>	10 WILSON J free throw 1 - 2 made (14)
15:51		<b>40-64</b>	<b>-24</b>	10 WILSON J free throw 2 - 2 made (15)
15:35	2 GOMILLION T 2pt FG outside the paint, jump shot missed			
15:31				10 WILSON J defensive rebound (7)
15:15	35 CARTER N foul drawn (2)			4 DICK G foul offensive (2 - 3)
15:15				4 DICK G turnover offensive (2)
15:15	23 SHAW A substitution out			
15:15	10 HONOR N substitution in			
15:00	10 HONOR N 2pt FG from turnover outside the paint, jump shot made (9)	<b>42-64</b>	<b>-22</b>	
14:43				4 DICK G turnover lost ball (3)
14:28	2 GOMILLION T turnover lost ball (5)			15 MCCULLAR K steal (4)
14:24				15 MCCULLAR K turnover bad pass (2)
14:04	35 CARTER N foul drawn (3)			10 WILSON J foul personal (2 - 4)
14:04	2 GOMILLION T 2pt FG from turnover in the paint, layup made (5)	<b>44-64</b>	<b>-20</b>	
14:04	10 HONOR N assist (3)			
14:04				10 WILSON J 3pt FG , jump shot missed
13:56	13 DEGRAY III R defensive rebound (3)			
13:51	55 EAST II S foul offensive (2 - 4)			3 HARRIS D foul drawn (2)
13:51	55 EAST II S turnover offensive (1)			
13:51	2 GOMILLION T substitution out			
13:51	4 GHOLSTON D substitution in			
13:51				4 DICK G substitution out
13:51				1 YESUFU J substitution in
13:02		<b>44-66</b>	<b>-22</b>	15 MCCULLAR K 2pt FG from turnover in the paint, dunk, made (11)
13:02				24 ADAMS, JR. K assist (1)
12:38	4 GHOLSTON D foul drawn (4)			10 WILSON J foul personal (3 - 5)
12:38				10 WILSON J substitution out



#6/6 Kansas at Missouri

12/10/22 Mizzou Arena, Columbia  
2022-23 Men's Basketball

Game Time: 4:15 PM  
Game Duration: 2:13  
Attendance: 15,061

Officials: Pat Adams, Byron Jarrett, Jeb Hartness

Game Time	Mizzou	Score	Diff	Kansas
12:38				4 DICK G substitution in
12:38	13 DEGRAY III R substitution out			
12:38	35 CARTER N substitution out			
12:38	2 GOMILLION T substitution in			
12:38	5 HODGE D substitution in			
12:25	10 HONOR N 2pt FG in the paint, layup made (11)	46-66	-20	
12:12				Timeout 30 Sec
11:49				turnover shot clock (13)
11:29	jump ball situation			
11:29	2 GOMILLION T turnover lost ball (6)			24 ADAMS, JR. K steal (2)
11:08		46-69	-23	15 MCCULLAR K 3pt FG from turnover, jump shot made (14)
11:08				3 HARRIS D assist (9)
11:02	4 GHOLSTON D turnover lost ball (3)			15 MCCULLAR K steal (5)
10:56				1 YESUFU J 3pt FG from turnover, jump shot missed
10:55				15 MCCULLAR K offensive rebound (3)
10:55	5 HODGE D foul personal (2 - 5)			15 MCCULLAR K foul drawn (3)
10:55	4 GHOLSTON D substitution out			
10:55	23 SHAW A substitution in			
10:48				15 MCCULLAR K 3pt FG from turnover second chance, jump shot missed
10:45	5 HODGE D defensive rebound (6)			
10:43	5 HODGE D foul drawn (2)			1 YESUFU J foul shooting (1 - 6)
10:43	5 HODGE D free throw fast break 1 - 2 made (8)	47-69	-22	
10:43	5 HODGE D free throw fast break 2 - 2 missed			
10:41				24 ADAMS, JR. K defensive rebound (5)
10:26		47-71	-24	15 MCCULLAR K 2pt FG in the paint, layup made (16)
10:26				24 ADAMS, JR. K assist (2)
10:14	5 HODGE D 3pt FG , jump shot made (11)	50-71	-21	
10:14	10 HONOR N assist (4)			
09:53				4 DICK G 3pt FG , jump shot missed
09:51	2 GOMILLION T defensive rebound (3)			
09:49	10 HONOR N substitution out			
09:49	35 CARTER N substitution in			
09:49				4 DICK G substitution out
09:49				24 ADAMS, JR. K substitution out
09:49				10 WILSON J substitution in
09:49				31 MARTIN C substitution in
09:41	5 HODGE D 3pt FG , jump shot made (14)	53-71	-18	
09:41	55 EAST II S assist (1)			
09:14	2 GOMILLION T foul personal (1 - 6)			31 MARTIN C foul drawn (1)
09:14				1 YESUFU J substitution out
09:14				0 PETTIFORD B substitution in
09:14	35 CARTER N substitution out			
09:14	4 GHOLSTON D substitution in			
09:14				3 HARRIS D substitution out
09:14				1 YESUFU J substitution in
09:06		53-73	-20	15 MCCULLAR K 2pt FG in the paint, layup made (18)
09:06				0 PETTIFORD B assist (1)
08:53	55 EAST II S foul offensive (3 - 7)			0 PETTIFORD B foul drawn (1)



#6/6 Kansas at Missouri

12/10/22 Mizzou Arena, Columbia  
2022-23 Men's Basketball

Game Time: 4:15 PM  
Game Duration: 2:13  
Attendance: 15,061

Officials: Pat Adams, Byron Jarrett, Jeb Hartness

Game Time	Mizzou	Score	Diff	Kansas
08:53	55 EAST II S turnover offensive (2)			
08:53	2 GOMILLION T substitution out			
08:53	5 HODGE D substitution out			
08:53	55 EAST II S substitution out			
08:53	10 HONOR N substitution in			
08:53	24 BROWN K substitution in			
08:53	35 CARTER N substitution in			
08:37				31 MARTIN C 2pt FG from turnover in the paint, layup blocked
08:37	35 CARTER N block (1)			
08:32	35 CARTER N defensive rebound (5)			
08:28	35 CARTER N 3pt FG , jump shot made (11)	56-73	-17	
08:28	10 HONOR N assist (5)			
08:01				15 MCCULLAR K 3pt FG , jump shot missed
07:58	35 CARTER N defensive rebound (6)			
07:54	4 GHOLSTON D 2pt FG fast break in the paint, layup made (11)	58-73	-15	
07:33	24 BROWN K foul shooting (2 - 8)			10 WILSON J foul drawn (4)
07:33	Timeout media			
07:33				1 YESUFU J substitution out
07:33				31 MARTIN C substitution out
07:33				4 DICK G substitution in
07:33				24 ADAMS, JR. K substitution in
07:33		58-74	-16	10 WILSON J free throw 1 - 2 made (16)
07:33		58-75	-17	10 WILSON J free throw 2 - 2 made (17)
07:13	10 HONOR N 2pt FG in the paint, layup made (13)	60-75	-15	
06:50				4 DICK G 2pt FG outside the paint, jump shot missed
06:50	defensive rebound (29)			
06:50	24 BROWN K substitution out			
06:50	5 HODGE D substitution in			
06:50				0 PETTIFORD B substitution out
06:50				3 HARRIS D substitution in
06:37	10 HONOR N 3pt FG , jump shot missed			
06:35				3 HARRIS D defensive rebound (2)
06:33		60-77	-17	10 WILSON J 2pt FG fast break outside the paint, jump shot made (19)
06:19	35 CARTER N turnover lost ball (1)			10 WILSON J steal (3)
06:15	5 HODGE D foul shooting (3 - 9)			3 HARRIS D foul drawn (3)
06:15		60-78	-18	3 HARRIS D free throw fast break 1 - 2 made (5)
06:15		60-79	-19	3 HARRIS D free throw fast break 2 - 2 made (6)
05:58	4 GHOLSTON D foul offensive (4 - 10)			15 MCCULLAR K foul drawn (4)
05:58	4 GHOLSTON D turnover offensive (4)			
05:58	4 GHOLSTON D substitution out			
05:58	24 BROWN K substitution in			
05:35				10 WILSON J 2pt FG from turnover outside the paint, jump shot missed
05:33	24 BROWN K defensive rebound (5)			
05:19	24 BROWN K foul drawn (2)			4 DICK G foul personal (3 - 7)
05:19	23 SHAW A substitution out			
05:19	2 GOMILLION T substitution in			
05:19	24 BROWN K 1&1 free throw 1 made (3)	61-79	-18	
05:19	24 BROWN K 1&1 free throw 2 made (4)	62-79	-17	



#6/6 Kansas at Missouri

12/10/22 Mizzou Arena, Columbia  
2022-23 Men's Basketball

Game Time: 4:15 PM  
Game Duration: 2:13  
Attendance: 15,061

Officials: Pat Adams, Byron Jarrett, Jeb Hartness

Game Time	Mizzou	Score	Diff	Kansas
04:58	24 BROWN K foul shooting (3 - 11)			4 DICK G foul drawn (2)
04:58		<b>62-80</b>	<b>-18</b>	4 DICK G free throw 1 - 2 made (16)
04:57				4 DICK G free throw 2 - 2 missed
04:56	24 BROWN K defensive rebound (6)			
04:43	35 CARTER N turnover lost ball (2)			
04:21		<b>62-82</b>	<b>-20</b>	15 MCCULLAR K 2pt FG from turnover in the paint, layup made (20)
04:21				24 ADAMS, JR. K assist (3)
04:21	35 CARTER N foul shooting (3 - 12)			15 MCCULLAR K foul drawn (5)
04:21	2 GOMILLION T substitution out			
04:21	24 BROWN K substitution out			
04:21	4 GHOLSTON D substitution in			
04:21	55 EAST II S substitution in			
04:21	35 CARTER N substitution out			
04:21	2 GOMILLION T substitution in			
04:21		<b>62-83</b>	<b>-21</b>	15 MCCULLAR K free throw 1 - 1 made (21)
04:09	4 GHOLSTON D 2pt FG outside the paint, jump shot missed			
04:06				15 MCCULLAR K defensive rebound (4)
04:00				10 WILSON J 2pt FG outside the paint, jump shot missed
03:57				24 ADAMS, JR. K offensive rebound (6)
03:57		<b>62-85</b>	<b>-23</b>	24 ADAMS, JR. K 2pt FG second chance in the paint, layup made (19)
03:51	Timeout media			
03:51				4 DICK G substitution out
03:51				0 PETTIFORD B substitution in
03:44	2 GOMILLION T foul drawn (4)			24 ADAMS, JR. K foul shooting (2 - 8)
03:44	2 GOMILLION T free throw 1 - 2 missed			
03:44	offensive dead ball rebound (4)			
03:44	2 GOMILLION T free throw 2 - 2 made (6)	<b>63-85</b>	<b>-22</b>	
03:18				10 WILSON J 2pt FG in the paint, layup missed
03:15				10 WILSON J offensive rebound (8)
03:15		<b>63-87</b>	<b>-24</b>	10 WILSON J 2pt FG second chance in the paint, layup made (21)
03:01	5 HODGE D 3pt FG , jump shot missed			
02:59				10 WILSON J defensive rebound (9)
02:41		<b>63-89</b>	<b>-26</b>	0 PETTIFORD B 2pt FG in the paint, layup made (2)
02:41				15 MCCULLAR K assist (3)
02:34	4 GHOLSTON D foul drawn (5)			3 HARRIS D foul personal (2 - 9)
02:34	2 GOMILLION T substitution out			
02:34	35 CARTER N substitution in			
02:34				24 ADAMS, JR. K substitution out
02:34				21 CLEMENCE Z substitution in
02:34	4 GHOLSTON D 1&1 free throw 1 missed			
02:31				10 WILSON J defensive rebound (10)
02:11		<b>63-92</b>	<b>-29</b>	10 WILSON J 3pt FG , jump shot made (24)
02:02	4 GHOLSTON D substitution out			
02:02	23 SHAW A substitution in			
02:02				3 HARRIS D substitution out
02:02				10 WILSON J substitution out
02:02				15 MCCULLAR K substitution out



**#6/6 Kansas at Missouri**

12/10/22 Mizzou Arena, Columbia  
2022-23 Men's Basketball

**Game Time:** 4:15 PM  
**Game Duration:** 2:13  
**Attendance:** 15,061

**Officials:** Pat Adams, Byron Jarrett, Jeb Hartness

Game Time	Mizzou	Score	Diff	Kansas
02:02				1 YESUFU J substitution in
02:02				11 RICE M substitution in
02:02				35 EJIOFOR Z substitution in
02:02	35 CARTER N foul drawn (4)			35 EJIOFOR Z foul personal (1 - 10)
02:02	35 CARTER N free throw 1 - 2 made (12)	<b>64-92</b>	<b>-28</b>	
02:02	35 CARTER N free throw 2 - 2 missed			
02:01				35 EJIOFOR Z defensive rebound (1)
02:00	5 HODGE D steal (2)			35 EJIOFOR Z turnover lost ball (1)
01:53	10 HONOR N 2pt FG from turnover outside the paint, jump shot made (15)	<b>66-92</b>	<b>-26</b>	
01:19				35 EJIOFOR Z 2pt FG in the paint, layup missed
01:17	35 CARTER N defensive rebound (7)			
01:11	35 CARTER N 3pt FG , jump shot missed			
01:08				0 PETTIFORD B defensive rebound (2)
00:56				11 RICE M 3pt FG , jump shot missed
00:54	5 HODGE D defensive rebound (7)			
00:47	5 HODGE D foul drawn (3)			1 YESUFU J foul personal (2 - 11)
00:47	5 HODGE D free throw 1 - 2 made (15)	<b>67-92</b>	<b>-25</b>	
00:47				0 PETTIFORD B substitution out
00:47				1 YESUFU J substitution out
00:47				20 JANKOVICH M substitution in
00:47				22 WILHITE D substitution in
00:47	10 HONOR N substitution out			
00:47	31 STERNBERG B substitution in			
00:45	5 HODGE D free throw 2 - 2 missed			
00:44				35 EJIOFOR Z defensive rebound (2)
00:35		<b>67-95</b>	<b>-28</b>	20 JANKOVICH M 3pt FG , jump shot made (3)
00:20	5 HODGE D 3pt FG , jump shot missed			
00:17				35 EJIOFOR Z defensive rebound (3)
<b>END OF GAME</b>				
<b>Mizzou 67-95 Kansas</b>				



#6/6 Kansas at Missouri

12/10/22 Mizzou Arena, Columbia  
2022-23 Men's Basketball

Game Time: 4:15 PM  
Game Duration: 2:13  
Attendance: 15,061

Officials: Pat Adams, Byron Jarrett, Jeb Hartness

#6/6 Kansas - 45

NO.	Name	F	Min	FG	3P	FT	Rebounds			Fouls		TP	AS	TO	ST	Blocks		+/-
				M-A	M-A	M-A	OR	DR	TOT	PF	FD					BS	BA	
10	Jalen Wilson	F	15:09	5-10	2-4	5-6	2	3	5	3	3	17	0	0	1	0	0	13
24	KJ Adams, Jr.	F	15:10	2-2	0-0	0-0	1	2	3	1	0	4	3	1	1	0	0	15
3	Dajuan Harris	G	15:34	1-1	0-0	2-2	0	1	1	1	2	4	3	0	0	0	0	15
4	Gradey Dick	G	12:40	0-3	0-1	1-2	0	1	1	3	1	1	1	2	1	0	0	10
15	Kevin McCullar	G	17:58	5-8	1-4	3-3	1	2	3	0	4	14	1	1	4	0	0	12
1	Joseph Yesufu		07:33	0-1	0-1	0-0	0	0	0	2	0	0	0	0	0	0	0	-9
31	Cam Martin		02:16	0-1	0-0	0-0	0	0	0	0	1	0	0	0	0	0	1	-6
0	Bobby Pettiford		05:28	1-1	0-0	0-0	0	1	1	0	1	2	1	0	0	0	0	-1
21	Zach Clemence		02:34	0-0	0-0	0-0	0	0	0	0	0	0	0	0	0	0	0	2
11	MJ Rice		02:02	0-1	0-1	0-0	0	0	0	0	0	0	0	0	0	0	0	-1
35	Zuby Ejiofor		02:02	0-1	0-0	0-0	0	3	3	1	0	0	0	1	0	0	0	-1
20	Michael Jankovich		00:47	1-1	1-1	0-0	0	0	0	0	0	3	0	0	0	0	0	3
22	Dillon Wilhite		00:47	0-0	0-0	0-0	0	0	0	0	0	0	0	0	0	0	0	3
Team							0	0	0			0		1				
<b>Totals</b>				15-30	4-12	11-13	4	13	17	11	12	45	9	6	7	0	1	11

Shooting By Period		
2 <sup>nd</sup> FG%	15-30	50.0%
3PT%	4-12	33.3%
FT%	11-13	84.6%
GM FG%	15-30	50.0%
3PT%	4-12	33.3%
FT%	11-13	84.6%

Dead Ball Rebounds: 0, 0

Technical Fouls::NONE

Missouri - 34

NO.	Name	F	Min	FG	3P	FT	Rebounds			Fouls		TP	AS	TO	ST	Blocks		+/-
				M-A	M-A	M-A	OR	DR	TOT	PF	FD					BS	BA	
24	Kobe Brown	F	05:45	0-1	0-0	2-2	0	4	4	3	1	2	0	1	0	0	0	-3
35	Noah Carter	F	15:03	2-4	1-2	3-4	1	4	5	2	4	8	0	2	0	1	0	-4
4	DeAndre Gholston	G	12:14	2-4	0-0	1-2	0	0	0	1	3	5	0	3	1	0	0	-19
5	D'Moi Hodge	G	12:40	2-4	2-4	2-4	0	2	2	2	2	8	0	1	1	0	0	-18
10	Nick Honor	G	17:15	4-5	0-1	0-0	0	0	0	1	0	8	3	1	0	0	0	-7
23	Aidan Shaw		10:18	0-0	0-0	0-0	0	0	0	0	0	0	0	0	0	0	0	5
55	Sean East II		13:23	0-1	0-0	0-0	0	0	0	2	0	0	1	2	0	0	0	-4
2	Tre Gomillion		08:56	1-2	0-0	1-2	0	1	1	1	1	3	0	2	0	0	0	-3
13	Ronnie DeGray III		03:39	0-0	0-0	0-0	0	1	1	0	0	0	0	0	0	0	0	1
31	Ben Sternberg		00:47	0-0	0-0	0-0	0	0	0	0	0	0	0	0	0	0	0	-3
Team							0	1	1			0		0				
<b>Totals</b>				11-21	3-7	9-14	1	13	14	12	11	34	4	12	2	1	0	-11

Shooting By Period		
2 <sup>nd</sup> FG%	11-21	52.4%
3PT%	3-7	42.9%
FT%	9-14	64.3%
GM FG%	11-21	52.4%
3PT%	3-7	42.9%
FT%	9-14	64.3%

Dead Ball Rebounds: 1, 0

Technical Fouls::NONE

	Kansas	Mizzou
Biggest lead	29 (2 <sup>nd</sup> 2:11)	0 (1 <sup>st</sup> 20:00)
Best Scoring Run	9(2 <sup>nd</sup> 17:42)	6(2 <sup>nd</sup> 9:41)
Lead Changes	0	
Times Tied	0	
Time with Lead	20:00	00:00

Points from	Kansas	Mizzou
Turnovers	16	9
Paint	20	12
Second Chance	6	2
Fast Breaks	8	8
Bench	5	3

Period by Period Scoring			
	1st	2nd	TOT
Kansas	50	45	95
Mizzou	33	34	67



**#6/6 Kansas at Missouri**

12/10/22 Mizzou Arena, Columbia  
2022-23 Men's Basketball

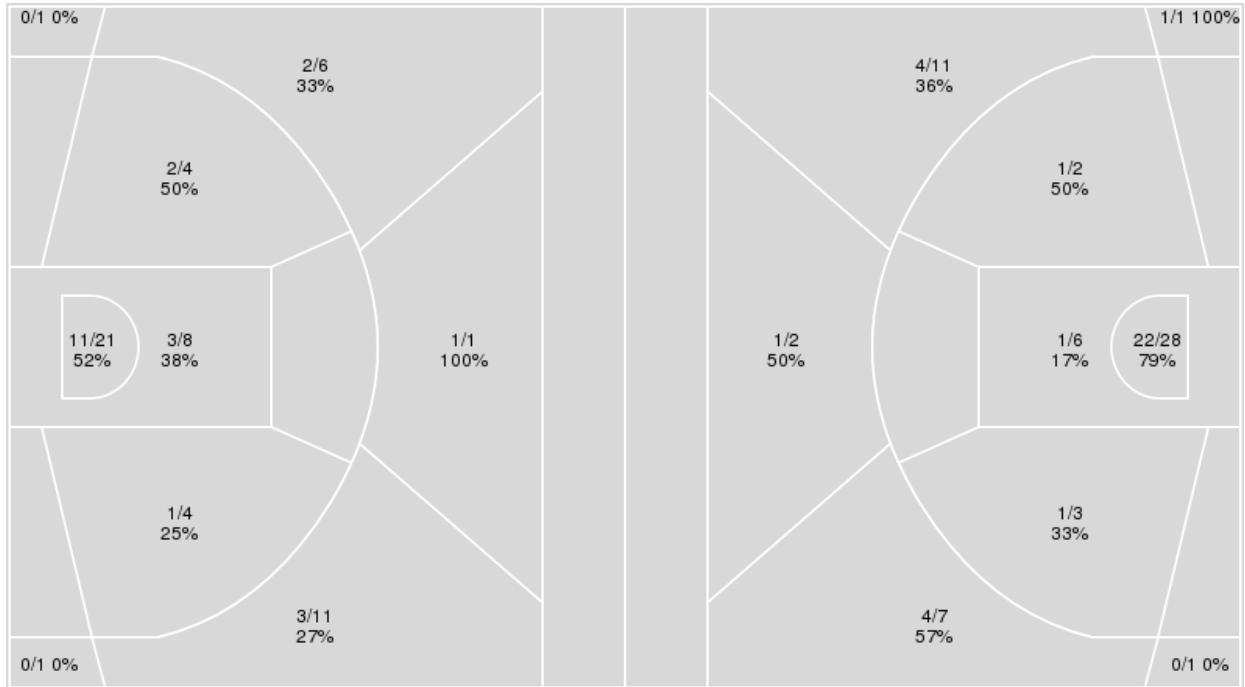
Officials: Pat Adams, Byron Jarrett, Jeb Hartness

{ Players => All; } FG Types => All; Results => All;

{ Players => 0, 1, 3, 4, 5, 10, 11, 12, 13, 15, 20, 21, 22, 23, 24, 31, 35; }  
FG Types => All; Results => All;

**Missouri**

**#6/6 Kansas**



Missouri	M/A	%
Field Goals	23/57	40
2 Points	17/37	46
3 Points	6/20	30
Free Throws	15/23	65

#6/6 Kansas	M/A	%
Field Goals	35/61	57
2 Points	25/39	64
3 Points	10/22	45
Free Throws	15/19	79





#6/6 Kansas at Missouri

12/10/22 Mizzou Arena, Columbia  
2022-23 Men's Basketball

Game Time: 4:15 PM  
Game Duration: 2:13  
Attendance: 15,061

Officials: Pat Adams, Byron Jarrett, Jeb Hartness

#6/6 Kansas

No	Name	Mins		Score		Points Diff		Points per Min		Assists		Rebounds		Steals		Turnovers	
		On	Off	On	Off	On	Off	On	Off	On	Off	On	Off	On	Off	On	Off
0	Bobby Pettiford	11:59	28:01	27 - 22	68 - 45	5	23	2.25	2.43	6	18	12	23	2	11	3	11
1	Joseph Yesufu	14:56	25:04	25 - 30	70 - 37	-5	33	1.67	2.79	9	15	10	25	5	8	7	7
3	Dajuan Harris	32:27	07:33	86 - 53	9 - 14	33	-5	2.65	1.19	22	2	25	10	13	0	11	3
4	Gradey Dick	31:34	08:26	79 - 54	16 - 13	25	3	2.50	1.90	21	3	28	7	11	2	12	2
10	Jalen Wilson	33:25	06:35	85 - 54	10 - 13	31	-3	2.54	1.52	21	3	27	8	11	2	12	2
11	MJ Rice	03:46	36:14	5 - 7	90 - 60	-2	30	1.33	2.48	1	23	6	29	0	13	1	13
15	Kevin McCullar	28:17	11:43	64 - 44	31 - 23	20	8	2.26	2.65	16	8	24	11	10	3	9	5
20	Michael Jankovich	00:47	39:13	3 - 0	92 - 67	3	25	3.83	2.35	0	24	2	33	0	13	0	14
21	Zach Clemence	02:34	37:26	6 - 4	89 - 63	2	26	2.34	2.38	0	24	5	30	0	13	1	13
22	Dillon Wilhite	00:47	39:13	3 - 0	92 - 67	3	25	3.83	2.35	0	24	2	33	0	13	0	14
23	Ernest Udeh Jr.	02:55	37:05	12 - 7	83 - 60	5	23	4.11	2.24	3	21	1	34	1	12	0	14
24	KJ Adams, Jr.	32:15	07:45	75 - 48	20 - 19	27	1	2.33	2.58	20	4	29	6	12	1	13	1
31	Cam Martin	02:16	37:44	2 - 8	93 - 59	-6	34	0.88	2.46	1	23	0	35	0	13	0	14
35	Zuby Ejiofor	02:02	37:58	3 - 4	92 - 63	-1	29	1.48	2.42	0	24	4	31	0	13	1	13

Missouri

No	Name	Mins		Score		Points Diff		Points per Min		Assists		Rebounds		Steals		Turnovers	
		On	Off	On	Off	On	Off	On	Off	On	Off	On	Off	On	Off	On	Off
2	Tre Gomillion	15:56	24:04	26 - 40	41 - 55	-14	-14	1.63	1.70	4	4	11	22	1	4	10	11
4	DeAndre Gholston	23:02	16:58	34 - 64	33 - 31	-30	2	1.48	1.94	3	5	16	17	2	3	13	8
5	D'Moi Hodge	28:11	11:49	43 - 73	24 - 22	-30	2	1.53	2.03	6	2	22	11	3	2	17	4
10	Nick Honor	31:48	08:12	56 - 77	11 - 18	-21	-7	1.76	1.34	7	1	27	6	4	1	19	2
13	Ronnie DeGray III	08:58	31:02	11 - 18	56 - 77	-7	-21	1.23	1.80	1	7	9	24	1	4	4	17
23	Aidan Shaw	22:24	17:36	43 - 42	24 - 53	1	-29	1.92	1.36	5	3	24	9	5	0	9	12
24	Kobe Brown	19:30	20:30	33 - 50	34 - 45	-17	-11	1.69	1.66	5	3	19	14	2	3	13	8
31	Ben Sternberg	00:47	39:13	0 - 3	67 - 92	-3	-25	0.00	1.71	0	8	0	33	0	5	0	21
35	Noah Carter	23:17	16:43	41 - 51	26 - 44	-10	-18	1.76	1.56	4	4	19	14	3	2	11	10
55	Sean East II	26:07	13:53	48 - 57	19 - 38	-9	-19	1.84	1.37	5	3	18	15	4	1	9	12

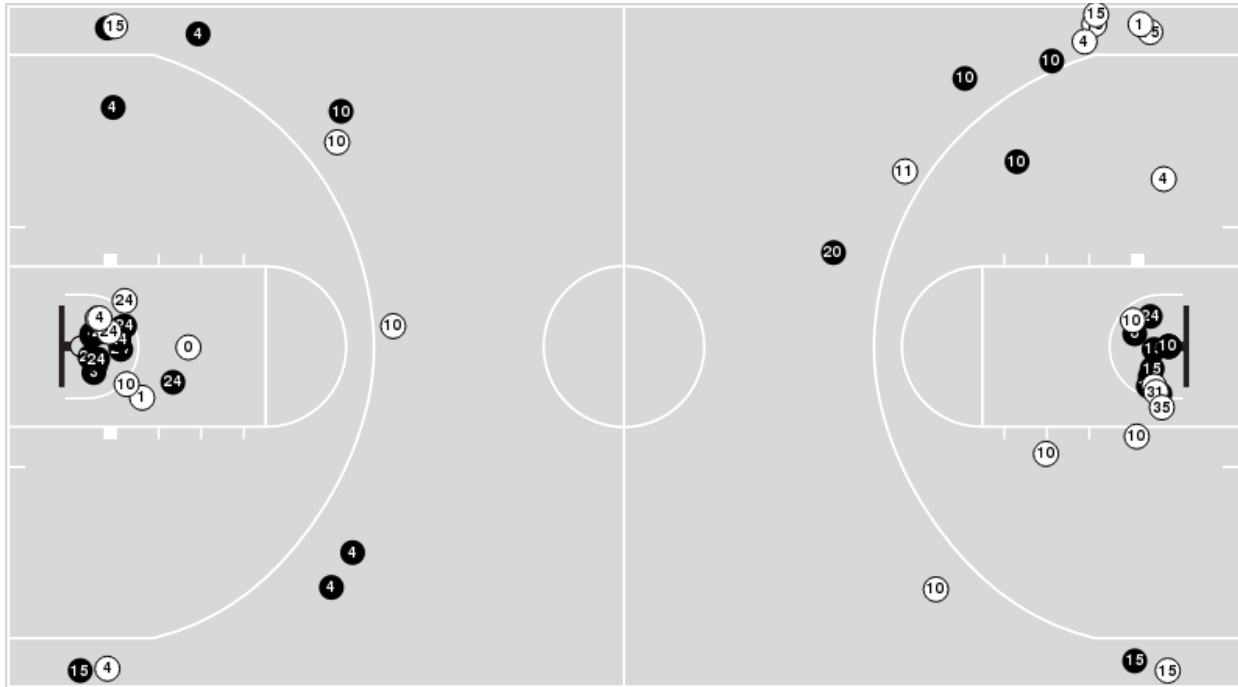


**Officials:** Pat Adams, Byron Jarrett, Jeb Hartness

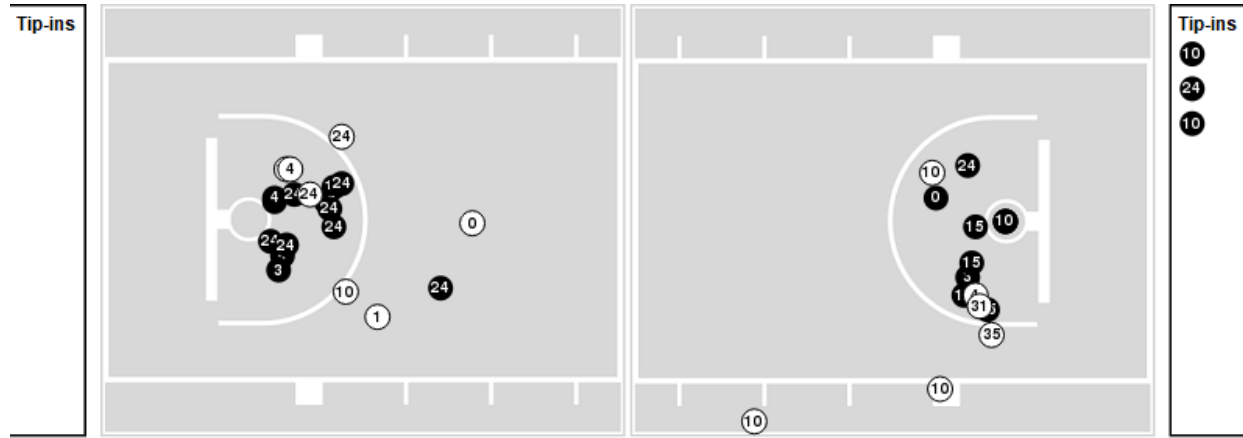
Players => 0, 1, 3, 4, 5, 10, 11, 12, 13, 15, 20, 21, 22, 23, 24, 31, 35FG Types=>AllResults=>All

**#6/6 Kansas**

**All Field Goals**



**Blow Up Chart**



● Made ○ Missed N - Player Number

#6/6 Kansas	M/A	%
Field Goals	35/61	57
2 Points	25/39	64
3 Points	10/22	45
Free Throws	15/19	79

#6/6 Kansas	M/A	%
Points in the Paint	46 (23 / 34)	68
Fast Break Points	22 (14/15)	93
Second Chance Points	8 (4/8)	50
Effective FG%	66	

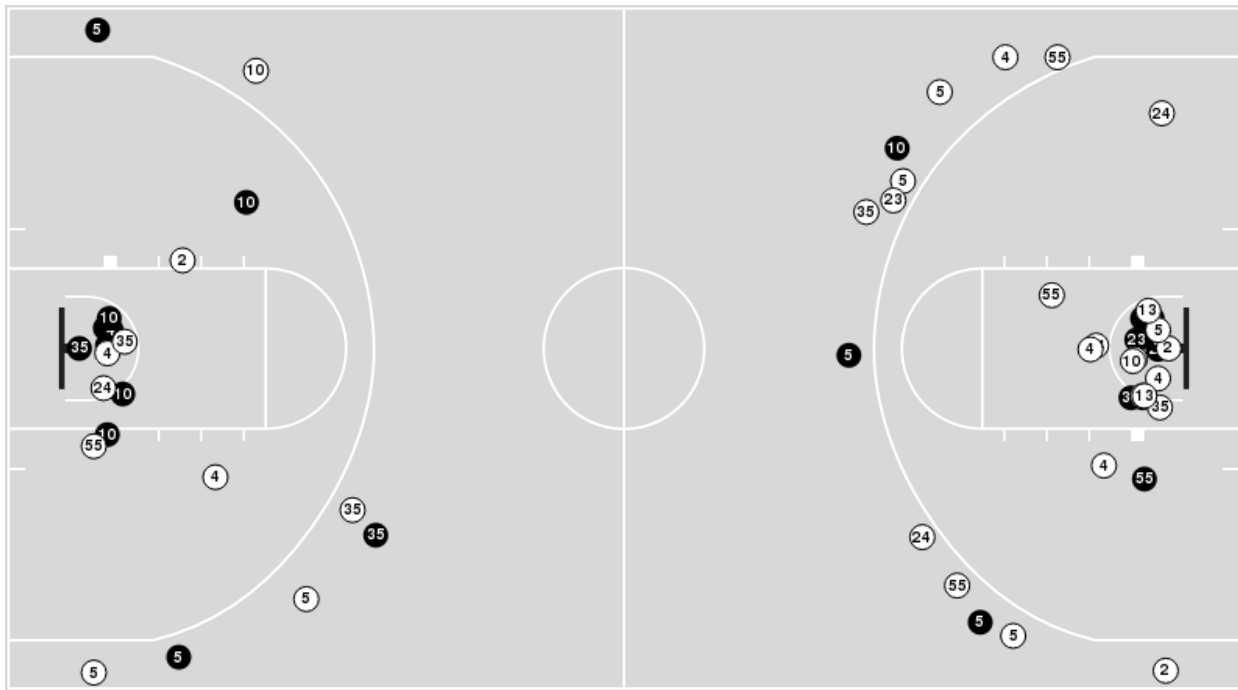


**Officials:** Pat Adams, Byron Jarrett, Jeb Hartness

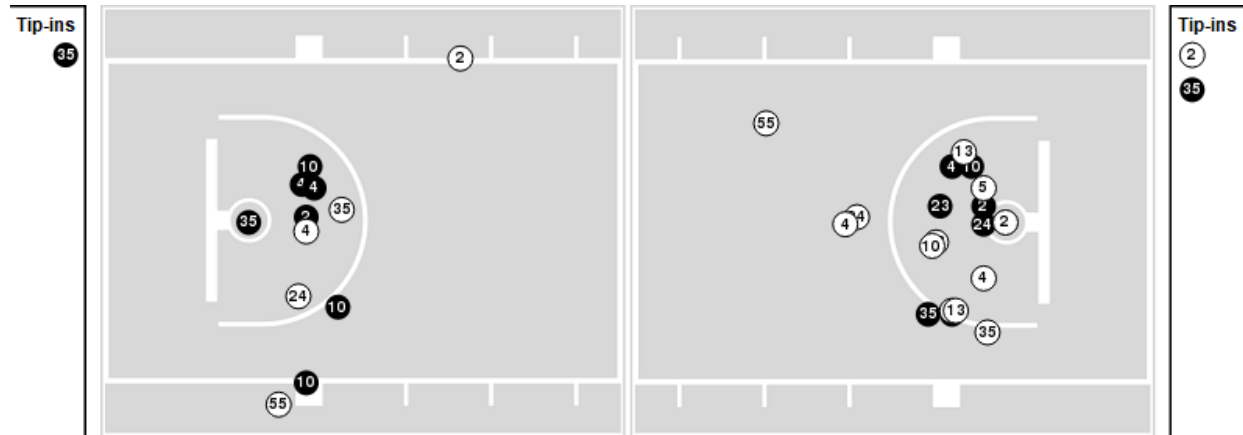
Players => AllFG Types=>AllResults=>All

**Missouri**

**All Field Goals**



**Blow Up Chart**



● Made ○ Missed N - Player Number

Missouri	M/A	%
Field Goals	23/57	40
2 Points	17/37	46
3 Points	6/20	30
Free Throws	15/23	65

Missouri	M/A	%
Points in the Paint	28 (14 / 29)	48
Fast Break Points	10 (7/9)	78
Second Chance Points	4 (2/7)	29
Effective FG%	46	



#6/6 Kansas at Missouri

12/10/22 Mizzou Arena, Columbia  
2022-23 Men's Basketball

Game Time: 4:15 PM  
Game Duration: 2:13  
Attendance: 15,061

Officials: Pat Adams, Byron Jarrett, Jeb Hartness

#6/6 Kansas

Lineup	Quarter On	Time On	Quarter Off	Time Off	Time on Court	Score	Score Diff	Reb	Stl	Tov	Ass	PPP
3- Harris D/ 4- Dick G/ 10- Wilson J/ 15- McCullar K/ 24- Adams, Jr. K/	1	20:00	1	15:25	04:35	16-9	7	4	1	0	5	1.8957
0- Pettiford B/ 3- Harris D/ 4- Dick G/ 10- Wilson J/ 23- Udeh Jr. E/	1	15:25	1	12:30	02:55	12-7	5	1	1	0	3	2.4590
0- Pettiford B/ 4- Dick G/ 10- Wilson J/ 15- McCullar K/ 24- Adams, Jr. K/	1	12:30	1	11:19	01:11	0-0	0	2	0	2	0	0.0000
0- Pettiford B/ 3- Harris D/ 10- Wilson J/ 15- McCullar K/ 24- Adams, Jr. K/	1	11:19	1	10:50	00:29	2-0	2	0	1	0	0	2.0000
1- Yesufu J/ 3- Harris D/ 10- Wilson J/ 15- McCullar K/ 24- Adams, Jr. K/	1	10:50	1	10:13	00:37	0-0	0	0	1	1	0	0.0000
1- Yesufu J/ 3- Harris D/ 4- Dick G/ 10- Wilson J/ 24- Adams, Jr. K/	1	10:13	1	08:16	01:57	6-1	5	1	2	1	2	1.5000
1- Yesufu J/ 3- Harris D/ 4- Dick G/ 11- Rice M/ 24- Adams, Jr. K/	1	08:16	1	06:32	01:44	2-3	-1	2	0	0	1	0.6667
1- Yesufu J/ 3- Harris D/ 4- Dick G/ 10- Wilson J/ 24- Adams, Jr. K/	1	06:32	1	04:53	01:39	2-6	-4	2	0	3	0	0.5000
3- Harris D/ 4- Dick G/ 10- Wilson J/ 15- McCullar K/ 24- Adams, Jr. K/	1	04:53	1	03:22	01:31	2-2	0	1	0	1	1	0.6667
0- Pettiford B/ 4- Dick G/ 10- Wilson J/ 15- McCullar K/ 24- Adams, Jr. K/	1	03:22	1	01:26	01:56	2-3	-1	4	0	0	1	0.8197
1- Yesufu J/ 3- Harris D/ 4- Dick G/ 10- Wilson J/ 24- Adams, Jr. K/	1	01:26	2	20:00	01:26	6-2	4	1	0	0	2	2.0833
3- Harris D/ 4- Dick G/ 10- Wilson J/ 15- McCullar K/ 24- Adams, Jr. K/	2	20:00	2	13:51	06:09	14-11	3	5	4	4	3	1.0264
1- Yesufu J/ 3- Harris D/ 10- Wilson J/ 15- McCullar K/ 24- Adams, Jr. K/	2	13:51	2	12:38	01:13	2-0	2	0	0	0	1	2.0000
1- Yesufu J/ 3- Harris D/ 4- Dick G/ 15- McCullar K/ 24- Adams, Jr. K/	2	12:38	2	09:49	02:49	5-6	-1	2	2	1	2	1.0000
1- Yesufu J/ 3- Harris D/ 10- Wilson J/ 15- McCullar K/ 31- Martin C/	2	09:49	2	09:14	00:35	0-3	-3	0	0	0	0	0.0000
0- Pettiford B/ 3- Harris D/ 10- Wilson J/ 15- McCullar K/ 31- Martin C/	2	09:14	2	09:14	00:00	0-0	0	0	0	0	0	0.0000
0- Pettiford B/ 1- Yesufu J/ 10- Wilson J/ 15- McCullar K/ 31- Martin C/	2	09:14	2	07:33	01:41	2-5	-3	0	0	0	1	0.6667
0- Pettiford B/ 4- Dick G/ 10- Wilson J/ 15- McCullar K/ 24- Adams, Jr. K/	2	07:33	2	06:50	00:43	2-2	0	0	0	0	0	1.0638
3- Harris D/ 4- Dick G/ 10- Wilson J/ 15- McCullar K/ 24- Adams, Jr. K/	2	06:50	2	03:51	02:59	10-2	8	3	1	0	1	1.6129
0- Pettiford B/ 3- Harris D/ 10- Wilson J/ 15- McCullar K/ 24- Adams, Jr. K/	2	03:51	2	02:34	01:17	4-1	3	2	0	0	1	2.0000
0- Pettiford B/ 3- Harris D/ 10- Wilson J/ 15- McCullar K/ 21- Clemence Z/	2	02:34	2	02:02	00:32	3-0	3	1	0	0	0	3.0000
0- Pettiford B/ 1- Yesufu J/ 11- Rice M/ 21- Clemence Z/ 35- Ejiolor Z/	2	02:02	2	00:47	01:15	0-4	-4	2	0	1	0	0.0000
11- Rice M/ 20- Jankovich M/ 21- Clemence Z/ 22- Wilhite D/ 35- Ejiolor Z/	2	00:47	2	00:00	00:47	3-0	3	2	0	0	0	3.0000



#6/6 Kansas at Missouri

12/10/22 Mizzou Arena, Columbia  
2022-23 Men's Basketball

Game Time: 4:15 PM  
Game Duration: 2:13  
Attendance: 15,061

Officials: Pat Adams, Byron Jarrett, Jeb Hartness

Missouri

Lineup	Quarter On	Time On	Quarter Off	Time Off	Time on Court	Score	Score Diff	Reb	Stl	Tov	Ass	PPP
4- Gholston D/ 5- Hodge D/ 10- Honor N/ 24- Brown K/ 35- Carter N/	1	20:00	1	17:13	02:47	6-9	-3	1	0	1	1	1.2295
2- Gomillion T/ 4- Gholston D/ 5- Hodge D/ 10- Honor N/ 24- Brown K/	1	17:13	1	15:25	01:48	3-7	-4	1	0	1	1	0.7500
2- Gomillion T/ 5- Hodge D/ 10- Honor N/ 24- Brown K/ 55- East II S/	1	15:25	1	14:33	00:52	2-5	-3	1	0	1	0	1.0000
2- Gomillion T/ 4- Gholston D/ 24- Brown K/ 35- Carter N/ 55- East II S/	1	14:33	1	13:50	00:43	1-5	-4	0	0	0	0	0.6944
2- Gomillion T/ 4- Gholston D/ 23- Shaw A/ 24- Brown K/ 35- Carter N/	1	13:50	1	13:43	00:07	0-0	0	0	0	0	0	0.0000
2- Gomillion T/ 4- Gholston D/ 23- Shaw A/ 35- Carter N/ 55- East II S/	1	13:43	1	10:50	02:53	4-4	0	4	1	1	0	0.7353
2- Gomillion T/ 5- Hodge D/ 10- Honor N/ 23- Shaw A/ 24- Brown K/	1	10:50	1	10:13	00:37	0-0	0	1	0	1	0	0.0000
5- Hodge D/ 10- Honor N/ 13- DeGray III R/ 23- Shaw A/ 24- Brown K/	1	10:13	1	08:16	01:57	1-6	-5	5	1	2	0	0.2577
4- Gholston D/ 5- Hodge D/ 24- Brown K/ 35- Carter N/ 55- East II S/	1	08:16	1	06:32	01:44	3-2	1	2	0	0	0	0.8721
4- Gholston D/ 10- Honor N/ 23- Shaw A/ 24- Brown K/ 55- East II S/	1	06:32	1	05:46	00:46	1-2	-1	1	0	1	0	0.4098
5- Hodge D/ 10- Honor N/ 23- Shaw A/ 24- Brown K/ 55- East II S/	1	05:46	1	03:22	02:24	7-2	5	0	1	1	2	1.7500
5- Hodge D/ 10- Honor N/ 13- DeGray III R/ 23- Shaw A/ 55- East II S/	1	03:22	2	20:00	03:22	5-8	-3	3	0	0	0	0.8333
4- Gholston D/ 5- Hodge D/ 10- Honor N/ 24- Brown K/ 35- Carter N/	2	20:00	2	17:55	02:05	0-7	-7	2	0	4	0	0.0000
4- Gholston D/ 5- Hodge D/ 10- Honor N/ 23- Shaw A/ 35- Carter N/	2	17:55	2	17:55	00:00	0-0	0	0	0	0	0	0.0000
4- Gholston D/ 10- Honor N/ 23- Shaw A/ 35- Carter N/ 55- East II S/	2	17:55	2	16:17	01:38	6-5	1	2	1	0	0	1.5464
10- Honor N/ 13- DeGray III R/ 23- Shaw A/ 35- Carter N/ 55- East II S/	2	16:17	2	16:17	00:00	1-0	1	0	0	0	0	2.2727
2- Gomillion T/ 13- DeGray III R/ 23- Shaw A/ 35- Carter N/ 55- East II S/	2	16:17	2	15:15	01:02	0-2	-2	0	0	0	0	0.0000
2- Gomillion T/ 10- Honor N/ 13- DeGray III R/ 35- Carter N/ 55- East II S/	2	15:15	2	13:51	01:24	4-0	4	1	0	2	1	1.0000
4- Gholston D/ 10- Honor N/ 13- DeGray III R/ 35- Carter N/ 55- East II S/	2	13:51	2	12:38	01:13	0-2	-2	0	0	0	0	0.0000
2- Gomillion T/ 4- Gholston D/ 5- Hodge D/ 10- Honor N/ 55- East II S/	2	12:38	2	10:55	01:43	2-3	-1	0	0	2	0	0.6667
2- Gomillion T/ 5- Hodge D/ 10- Honor N/ 23- Shaw A/ 55- East II S/	2	10:55	2	09:49	01:06	4-2	2	2	0	0	1	2.1277
2- Gomillion T/ 5- Hodge D/ 23- Shaw A/ 35- Carter N/ 55- East II S/	2	09:49	2	09:14	00:35	3-0	3	0	0	0	1	3.0000
2- Gomillion T/ 4- Gholston D/ 5- Hodge D/ 23- Shaw A/ 55- East II S/	2	09:14	2	08:53	00:21	0-2	-2	0	0	1	0	0.0000
4- Gholston D/ 10- Honor N/ 23- Shaw A/ 24- Brown K/ 35- Carter N/	2	08:53	2	06:50	02:03	7-2	5	3	0	0	1	2.3333
4- Gholston D/ 5- Hodge D/ 10- Honor N/ 23- Shaw A/ 35- Carter N/	2	06:50	2	05:58	00:52	0-4	-4	0	0	2	0	0.0000
5- Hodge D/ 10- Honor N/ 23- Shaw A/ 24- Brown K/ 35- Carter N/	2	05:58	2	05:19	00:39	0-0	0	1	0	0	0	0.0000
2- Gomillion T/ 5- Hodge D/ 10- Honor N/ 24- Brown K/ 35- Carter N/	2	05:19	2	04:21	00:58	2-3	-1	1	0	1	0	1.0638
4- Gholston D/ 5- Hodge D/ 10- Honor N/ 35- Carter N/ 55- East II S/	2	04:21	2	04:21	00:00	0-0	0	0	0	0	0	0.0000
2- Gomillion T/ 4- Gholston D/ 5- Hodge D/ 10- Honor N/ 55- East II S/	2	04:21	2	02:34	01:47	1-7	-6	0	0	0	0	0.3472
4- Gholston D/ 5- Hodge D/ 10- Honor N/ 35- Carter N/ 55- East II S/	2	02:34	2	02:02	00:32	0-3	-3	0	0	0	0	0.0000
5- Hodge D/ 10- Honor N/ 23- Shaw A/ 35- Carter N/ 55- East II S/	2	02:02	2	00:47	01:15	4-0	4	2	1	0	0	1.2048
5- Hodge D/ 23- Shaw A/ 31- Sternberg B/ 35- Carter N/ 55- East II S/	2	00:47	2	00:00	00:47	0-3	-3	0	0	0	0	0.0000



**#6/6 Kansas at Missouri**

12/10/22 Mizzou Arena, Columbia  
2022-23 Men's Basketball

**Game Time:** 4:15 PM  
**Game Duration:** 2:13  
**Attendance:** 15,061

**Officials:** Pat Adams, Byron Jarrett, Jeb Hartness

**#6/6 Kansas**

Lineup	Time	Score	Score Diff	Pts/Min	Reb	Stl	Tov	Ass	PPP
3- Harris D/ 4- Dick G/ 10- Wilson J/ 15- McCullar K/ 24- Adams, Jr. K/	15:14	42-24	18	2.7571	13	6	5	10	1.3427
1- Yesufu J/ 3- Harris D/ 4- Dick G/ 10- Wilson J/ 24- Adams, Jr. K/	05:02	14-9	5	2.7815	4	2	4	4	1.2868
0- Pettiford B/ 4- Dick G/ 10- Wilson J/ 15- McCullar K/ 24- Adams, Jr. K/	03:50	4-5	-1	1.0435	6	0	2	1	0.5464
0- Pettiford B/ 3- Harris D/ 4- Dick G/ 10- Wilson J/ 23- Udeh Jr. E/	02:55	12-7	5	4.1143	1	1	0	3	2.4590
1- Yesufu J/ 3- Harris D/ 4- Dick G/ 15- McCullar K/ 24- Adams, Jr. K/	02:49	5-6	-1	1.7751	2	2	1	2	1.0000
1- Yesufu J/ 3- Harris D/ 10- Wilson J/ 15- McCullar K/ 24- Adams, Jr. K/	01:50	2-0	2	1.0909	0	1	1	1	1.0000
0- Pettiford B/ 3- Harris D/ 10- Wilson J/ 15- McCullar K/ 24- Adams, Jr. K/	01:46	6-1	5	3.3962	2	1	0	1	2.0000
1- Yesufu J/ 3- Harris D/ 4- Dick G/ 11- Rice M/ 24- Adams, Jr. K/	01:44	2-3	-1	1.1538	2	0	0	1	0.6667
0- Pettiford B/ 1- Yesufu J/ 10- Wilson J/ 15- McCullar K/ 31- Martin C/	01:41	2-5	-3	1.1881	0	0	0	1	0.6667
0- Pettiford B/ 1- Yesufu J/ 11- Rice M/ 21- Clemence Z/ 35- Ejiofor Z/	01:15	0-4	-4	0.0000	2	0	1	0	0.0000
11- Rice M/ 20- Jankovich M/ 21- Clemence Z/ 22- Wilhite D/ 35- Ejiofor Z/	00:47	3-0	3	3.8298	2	0	0	0	3.0000
1- Yesufu J/ 3- Harris D/ 10- Wilson J/ 15- McCullar K/ 31- Martin C/	00:35	0-3	-3	0.0000	0	0	0	0	0.0000
0- Pettiford B/ 3- Harris D/ 10- Wilson J/ 15- McCullar K/ 21- Clemence Z/	00:32	3-0	3	5.6250	1	0	0	0	3.0000
0- Pettiford B/ 3- Harris D/ 10- Wilson J/ 15- McCullar K/ 31- Martin C/	00:00	0-0	0	NaN	0	0	0	0	0.0000



#6/6 Kansas at Missouri

12/10/22 Mizzou Arena, Columbia  
2022-23 Men's Basketball

Game Time: 4:15 PM  
Game Duration: 2:13  
Attendance: 15,061

Officials: Pat Adams, Byron Jarrett, Jeb Hartness

Missouri

Lineup	Time	Score	Score Diff	Pts/Min	Reb	Stl	Tov	Ass	PPP
4- Gholston D/ 5- Hodge D/ 10- Honor N/ 24- Brown K/ 35- Carter N/	04:52	6-16	-10	1.2329	3	0	5	1	0.5515
2- Gomillion T/ 4- Gholston D/ 5- Hodge D/ 10- Honor N/ 55- East II S/	03:30	3-10	-7	0.8571	0	0	2	0	0.5102
5- Hodge D/ 10- Honor N/ 13- DeGray III R/ 23- Shaw A/ 55- East II S/	03:22	5-8	-3	1.4851	3	0	0	0	0.8333
2- Gomillion T/ 4- Gholston D/ 23- Shaw A/ 35- Carter N/ 55- East II S/	02:53	4-4	0	1.3873	4	1	1	0	0.7353
5- Hodge D/ 10- Honor N/ 23- Shaw A/ 24- Brown K/ 55- East II S/	02:24	7-2	5	2.9167	0	1	1	2	1.7500
4- Gholston D/ 10- Honor N/ 23- Shaw A/ 24- Brown K/ 35- Carter N/	02:03	7-2	5	3.4146	3	0	0	1	2.3333
5- Hodge D/ 10- Honor N/ 13- DeGray III R/ 23- Shaw A/ 24- Brown K/	01:57	1-6	-5	0.5128	5	1	2	0	0.2577
2- Gomillion T/ 4- Gholston D/ 5- Hodge D/ 10- Honor N/ 24- Brown K/	01:48	3-7	-4	1.6667	1	0	1	1	0.7500
4- Gholston D/ 5- Hodge D/ 24- Brown K/ 35- Carter N/ 55- East II S/	01:44	3-2	1	1.7308	2	0	0	0	0.8721
4- Gholston D/ 10- Honor N/ 23- Shaw A/ 35- Carter N/ 55- East II S/	01:38	6-5	1	3.6735	2	1	0	0	1.5464
2- Gomillion T/ 10- Honor N/ 13- DeGray III R/ 35- Carter N/ 55- East II S/	01:24	4-0	4	2.8571	1	0	2	1	1.0000
5- Hodge D/ 10- Honor N/ 23- Shaw A/ 35- Carter N/ 55- East II S/	01:15	4-0	4	3.2000	2	1	0	0	1.2048
4- Gholston D/ 10- Honor N/ 13- DeGray III R/ 35- Carter N/ 55- East II S/	01:13	0-2	-2	0.0000	0	0	0	0	0.0000
2- Gomillion T/ 5- Hodge D/ 10- Honor N/ 23- Shaw A/ 55- East II S/	01:06	4-2	2	3.6364	2	0	0	1	2.1277
2- Gomillion T/ 13- DeGray III R/ 23- Shaw A/ 35- Carter N/ 55- East II S/	01:02	0-2	-2	0.0000	0	0	0	0	0.0000
2- Gomillion T/ 5- Hodge D/ 10- Honor N/ 24- Brown K/ 35- Carter N/	00:58	2-3	-1	2.0690	1	0	1	0	1.0638
2- Gomillion T/ 5- Hodge D/ 10- Honor N/ 24- Brown K/ 55- East II S/	00:52	2-5	-3	2.3077	1	0	1	0	1.0000
4- Gholston D/ 5- Hodge D/ 10- Honor N/ 23- Shaw A/ 35- Carter N/	00:52	0-4	-4	0.0000	0	0	2	0	0.0000
5- Hodge D/ 23- Shaw A/ 31- Sternberg B/ 35- Carter N/ 55- East II S/	00:47	0-3	-3	0.0000	0	0	0	0	0.0000
4- Gholston D/ 10- Honor N/ 23- Shaw A/ 24- Brown K/ 55- East II S/	00:46	1-2	-1	1.3043	1	0	1	0	0.4098
2- Gomillion T/ 4- Gholston D/ 24- Brown K/ 35- Carter N/ 55- East II S/	00:43	1-5	-4	1.3953	0	0	0	0	0.6944
5- Hodge D/ 10- Honor N/ 23- Shaw A/ 24- Brown K/ 35- Carter N/	00:39	0-0	0	0.0000	1	0	0	0	0.0000
2- Gomillion T/ 5- Hodge D/ 10- Honor N/ 23- Shaw A/ 24- Brown K/	00:37	0-0	0	0.0000	1	0	1	0	0.0000
2- Gomillion T/ 5- Hodge D/ 23- Shaw A/ 35- Carter N/ 55- East II S/	00:35	3-0	3	5.1429	0	0	0	1	3.0000
4- Gholston D/ 5- Hodge D/ 10- Honor N/ 35- Carter N/ 55- East II S/	00:32	0-3	-3	0.0000	0	0	0	0	0.0000
2- Gomillion T/ 4- Gholston D/ 5- Hodge D/ 23- Shaw A/ 55- East II S/	00:21	0-2	-2	0.0000	0	0	1	0	0.0000
2- Gomillion T/ 4- Gholston D/ 23- Shaw A/ 24- Brown K/ 35- Carter N/	00:07	0-0	0	0.0000	0	0	0	0	0.0000
10- Honor N/ 13- DeGray III R/ 23- Shaw A/ 35- Carter N/ 55- East II S/	00:00	1-0	1	∞	0	0	0	0	2.2727