



Kansas at TCU

02/20/23 Ed and Rae Schollmaier Arena, Fort Worth
2022-23 Men's Basketball

Game Time: 8:00 PM
Game Duration: 2:03
Attendance: 7,831

Officials: Kipp Kissinger, Roger Ayers, Terry Oglesby

Kansas - 63

Record: 23-5 (11-4)

NO.	Name	F	Min	FG			Rebounds			Fouls		TP	AS	TO	ST	Blocks		+/-
				M-A	M-A	M-A	OR	DR	TOT	PF	FD					BS	BA	
10	Jalen Wilson	F	33:05	3-11	0-2	1-2	1	12	13	4	6	7	3	3	1	0	1	4
24	KJ Adams, Jr.	F	25:41	2-8	0-1	2-3	1	5	6	4	2	6	2	4	1	0	0	1
3	Dajuan Harris	G	36:46	3-9	0-0	0-0	4	1	5	1	0	6	8	0	0	0	1	8
4	Gradey Dick	G	34:33	7-18	3-10	2-2	2	4	6	2	2	19	2	1	0	0	1	4
15	Kevin McCullar	G	38:53	6-13	0-2	3-5	0	7	7	3	3	15	3	0	1	2	1	6
23	Ernest Udeh Jr.		14:19	3-3	0-0	0-0	1	0	1	3	1	6	1	0	3	1	0	4
0	Bobby Pettiford		08:41	1-1	0-0	0-0	0	1	1	0	0	2	0	1	0	0	0	-2
1	Joseph Yesufu		04:23	0-1	0-1	0-0	0	0	0	0	0	0	0	0	0	0	1	3
11	MJ Rice		03:39	1-2	0-0	0-0	0	1	1	0	0	2	0	1	0	0	0	-3
Team							4	4	8			0		1				
Totals				26-66	3-16	8-12	13	35	48	17	14	63	19	11	6	3	5	5

Shooting By Period		
1 st FG%	15-36	41.7%
3PT%	2-10	20.0%
FT%	1-1	100%
2 nd FG%	11-30	36.7%
3PT%	1-6	16.7%
FT%	7-11	63.6%
GM FG%	26-66	39.4%
3PT%	3-16	18.8%
FT%	8-12	66.7%

Dead Ball Rebounds: 3, 1

Technical Fouls: NONE

TCU - 58

Record: 18-10 (7-8)

NO.	Name	F	Min	FG			Rebounds			Fouls		TP	AS	TO	ST	Blocks		+/-
				M-A	M-A	M-A	OR	DR	TOT	PF	FD					BS	BA	
2	Emanuel Miller	F	27:09	2-9	0-1	4-5	4	3	7	2	3	8	1	1	0	1	0	-11
4	Eddie Lampkin	C	23:51	1-3	0-0	0-3	2	6	8	0	2	2	3	0	0	0	0	11
0	Micah Peavy	G	23:25	2-7	0-3	1-1	1	1	2	4	1	5	0	1	0	0	0	-2
1	Mike Miles	G	37:35	4-14	2-4	3-4	0	4	4	3	5	13	2	2	0	0	0	-8
10	Damion Baugh	G	33:50	4-16	2-6	1-2	0	6	6	2	2	11	4	2	3	1	1	-9
12	Xavier Cork		12:17	1-3	0-0	1-2	2	1	3	1	1	3	0	0	0	0	0	-8
5	Chuck O'Bannon		09:25	1-2	0-0	0-0	0	1	1	1	0	2	1	0	0	2	0	-3
21	JaKobe Coles		16:43	5-8	1-2	1-2	1	2	3	1	2	12	0	0	2	0	1	-2
13	Shahada Wells		15:45	0-4	0-2	2-2	2	3	5	0	1	2	2	1	0	1	1	7
Team							2	1	3			0		0				
Totals				20-66	5-18	13-21	14	28	42	14	17	58	13	7	5	5	3	-5

Shooting By Period		
1 st FG%	11-34	32.4%
3PT%	2-9	22.2%
FT%	5-9	55.6%
2 nd FG%	9-32	28.1%
3PT%	3-9	33.3%
FT%	8-12	66.7%
GM FG%	20-66	30.3%
3PT%	5-18	27.8%
FT%	13-21	61.9%

Dead Ball Rebounds: 4, 0

Technical Fouls: NONE

	KAN	TCU
Biggest lead	7 (1 st 15:50)	4 (1 st 4:43)
Best Scoring Run	7(1 st 15:50)	6(1 st 4:43)
Lead Changes	6	
Times Tied	6	
Time with Lead	30:31	02:51

Points from	KAN	TCU
Turnovers	7	10
Paint	42	30
Second Chance	10	13
Fast Breaks	19	19
Bench	10	19

	Period by Period Scoring		
	1st	2nd	TOT
KAN	33	30	63
TCU	29	29	58



Officials: Kipp Kissinger, Roger Ayers, Terry Oglesby

Period 1

Quarter Starters:

TCU	0 Peavy M	1 Miles M	2 Miller E	4 Lampkin E	10 Baugh D
KAN	3 Harris D	4 Dick G	10 Wilson J	15 McCullar K	24 Adams, Jr. K

Game Time	TCU	Score	Diff	KAN
20:00	4 LAMPKIN E jumpball won			24 ADAMS, JR. K jumpball lost
19:41	4 LAMPKIN E 2pt FG in the paint, hook shot missed			
19:38				10 WILSON J defensive rebound (1)
19:33				4 DICK G 2pt FG in the paint, pull up jump shot missed
19:30	defensive rebound (1)			
19:08	0 PEAVY M 2pt FG in the paint, pull up jump shot missed			
19:06				10 WILSON J defensive rebound (2)
18:46				24 ADAMS, JR. K 2pt FG outside the paint, jump shot missed
18:42	4 LAMPKIN E defensive rebound (1)			
18:34	10 BAUGH D 2pt FG outside the paint, floating jump shot missed			
18:31				15 MCCULLAR K defensive rebound (1)
18:23				15 MCCULLAR K 2pt FG in the paint, layup missed
18:20				3 HARRIS D offensive rebound (1)
18:03				4 DICK G 3pt FG second chance, jump shot missed
17:59	10 BAUGH D defensive rebound (1)			
17:53	1 MILES M 2pt FG in the paint, driving layup missed			
17:50				24 ADAMS, JR. K defensive rebound (1)
17:48				24 ADAMS, JR. K turnover out of bounds (1)
17:48	4 LAMPKIN E substitution out			
17:48	12 CORK X substitution in			
17:40	2 MILLER E 2pt FG from turnover in the paint, layup missed			
17:36	2 MILLER E offensive rebound (1)			
17:27	1 MILES M 3pt FG from turnover second chance, jump shot missed			
17:24				10 WILSON J defensive rebound (3)
17:20		0-3	-3	4 DICK G 3pt FG fast break, jump shot made (3)
17:20				10 WILSON J assist (1)
17:06	1 MILES M foul drawn (1)			24 ADAMS, JR. K foul personal (1 - 1)
16:59	0 PEAVY M 3pt FG , jump shot missed			
16:56	2 MILLER E offensive rebound (2)			
16:53	10 BAUGH D 3pt FG second chance, jump shot missed			
16:51				24 ADAMS, JR. K defensive rebound (2)
16:32				15 MCCULLAR K 2pt FG in the paint, layup missed
16:30				4 DICK G offensive rebound (1)
16:28		0-5	-5	4 DICK G 2pt FG second chance outside the paint, pull up jump shot made (5)
16:28				3 HARRIS D assist (1)
16:04	0 PEAVY M foul offensive (1 - 1)			4 DICK G foul drawn (1)
16:04	0 PEAVY M turnover offensive (1)			
16:04	0 PEAVY M substitution out			
16:04	12 CORK X substitution out			
16:04	4 LAMPKIN E substitution in			
16:04	5 O'BANNON C substitution in			



Official Basketball Play by Play - First Half
Kansas at TCU
 02/20/23 Ed and Rae Schollmaier Arena, Fort Worth
 2022-23 Men's Basketball

Game Time: 8:00 PM
Game Duration: 2:03
Attendance: 7,831

Officials: Kipp Kissinger, Roger Ayers, Terry Oglesby

Game Time	TCU	Score	Diff	KAN
15:50		0-7	-7	15 MCCULLAR K 2pt FG from turnover in the paint, driving layup made (2)
15:27	2 MILLER E 2pt FG in the paint, driving layup made (2)	2-7	-5	
15:27	5 O'BANNON C assist (1)			
15:16				10 WILSON J 2pt FG in the paint, driving layup missed
15:16	10 BAUGH D defensive rebound (2)			
15:11	2 MILLER E 2pt FG fast break in the paint, driving layup made (4)	4-7	-3	
15:11	10 BAUGH D assist (1)			
15:11	2 MILLER E foul drawn (1)			4 DICK G foul shooting (1 - 2)
15:11	Timeout media			
15:11	2 MILLER E free throw fast break 1 - 1 missed			
15:10				10 WILSON J defensive rebound (4)
15:10				24 ADAMS, JR. K substitution out
15:10				23 UDEH JR. E substitution in
14:47				15 MCCULLAR K 3pt FG , jump shot missed
14:44				3 HARRIS D offensive rebound (2)
14:42				3 HARRIS D 2pt FG second chance in the paint, pull up jump shot missed
14:40				3 HARRIS D offensive rebound (3)
14:33		4-9	-5	4 DICK G 2pt FG second chance outside the paint, pull up jump shot made (7)
14:33				3 HARRIS D assist (2)
14:14	10 BAUGH D 2pt FG in the paint, jump shot missed			
14:11	4 LAMPKIN E offensive rebound (2)			
14:09	10 BAUGH D foul drawn (1)			23 UDEH JR. E foul personal (1 - 3)
14:09	2 MILLER E substitution out			
14:09	21 COLES J substitution in			
13:56	1 MILES M 3pt FG second chance, jump shot made (3)	7-9	-2	
13:56	10 BAUGH D assist (2)			
13:26		7-12	-5	4 DICK G 3pt FG , jump shot made (10)
13:26				3 HARRIS D assist (3)
13:12	10 BAUGH D turnover lost ball (1)			23 UDEH JR. E steal (1)
13:12	5 O'BANNON C substitution out			
13:12	10 BAUGH D substitution out			
13:12	0 PEAVY M substitution in			
13:12	13 WELLS S substitution in			
13:00				3 HARRIS D 2pt FG from turnover in the paint, layup missed
12:56	1 MILES M defensive rebound (1)			
12:51	1 MILES M turnover bad pass (1)			15 MCCULLAR K steal (1)
12:50				Timeout 30 Sec
12:50				3 HARRIS D substitution out
12:50				0 PETTIFORD B substitution in
12:45	21 COLES J steal (1)			0 PETTIFORD B turnover bad pass (1)
12:40	21 COLES J 2pt FG fast break from turnover in the paint, jump shot made (2)	9-12	-3	
12:16		9-14	-5	0 PETTIFORD B 2pt FG in the paint, layup made (2)
12:16				4 DICK G assist (1)
11:53	Timeout media			
11:53				23 UDEH JR. E substitution out
11:53				24 ADAMS, JR. K substitution in



Official Basketball Play by Play - First Half
Kansas at TCU
 02/20/23 Ed and Rae Schollmaier Arena, Fort Worth
 2022-23 Men's Basketball

Game Time: 8:00 PM
Game Duration: 2:03
Attendance: 7,831

Officials: Kipp Kissinger, Roger Ayers, Terry Oglesby

Game Time	TCU	Score	Diff	KAN
11:47	1 MILES M 2pt FG in the paint, layup missed			
11:45				10 WILSON J defensive rebound (5)
11:27	1 MILES M foul drawn (2)			10 WILSON J foul offensive (1 - 4)
11:27				10 WILSON J turnover offensive (1)
11:27				0 PETTIFORD B substitution out
11:27				3 HARRIS D substitution in
11:05	4 LAMPKIN E 2pt FG from turnover in the paint, dunk, made (2)	11-14	-3	
11:05	13 WELLS S assist (1)			
10:45				4 DICK G 3pt FG , jump shot missed
10:41	1 MILES M defensive rebound (2)			
10:25	21 COLES J 2pt FG in the paint, layup made (4)	13-14	-1	
10:25	4 LAMPKIN E assist (1)			
10:04		13-16	-3	10 WILSON J 2pt FG in the paint, driving layup made (2)
09:45	13 WELLS S 3pt FG , jump shot missed			
09:41	0 PEAVY M offensive rebound (1)			
09:41	0 PEAVY M 2pt FG second chance in the paint, layup made (2)	15-16	-1	
09:41	0 PEAVY M foul drawn (1)			4 DICK G foul shooting (2 - 5)
09:41	1 MILES M substitution out			
09:41	4 LAMPKIN E substitution out			
09:41	21 COLES J substitution out			
09:41	2 MILLER E substitution in			
09:41	10 BAUGH D substitution in			
09:41	12 CORK X substitution in			
09:41				4 DICK G substitution out
09:41				15 MCCULLAR K substitution out
09:41				0 PETTIFORD B substitution in
09:41				1 YESUFU J substitution in
09:41	0 PEAVY M free throw 1 - 1 made (3)	16-16	0	
09:27				10 WILSON J 3pt FG , jump shot missed
09:25				offensive rebound (13)
09:10				24 ADAMS, JR. K 2pt FG second chance outside the paint, turnaround jump shot missed
09:07	0 PEAVY M defensive rebound (2)			
08:58	12 CORK X foul drawn (1)			10 WILSON J foul shooting (2 - 6)
08:58	12 CORK X free throw 1 - 2 missed			
08:58	offensive dead ball rebound (1)			
08:58				10 WILSON J substitution out
08:58				15 MCCULLAR K substitution in
08:58	12 CORK X free throw 2 - 2 made (1)	17-16	1	
08:39	13 WELLS S substitution out			
08:39	1 MILES M substitution in			
08:26				24 ADAMS, JR. K 3pt FG , jump shot missed
08:24	1 MILES M defensive rebound (3)			
08:07	10 BAUGH D 2pt FG in the paint, driving layup missed			
08:07				defensive rebound (14)
07:48		17-18	-1	15 MCCULLAR K 2pt FG in the paint, layup made (4)
07:48				3 HARRIS D assist (4)
07:27	12 CORK X 2pt FG in the paint, layup missed			
07:24	12 CORK X offensive rebound (1)			



Kansas at TCU

02/20/23 Ed and Rae Schollmaier Arena, Fort Worth
2022-23 Men's Basketball

Game Time: 8:00 PM
Game Duration: 2:03
Attendance: 7,831

Officials: Kipp Kissinger, Roger Ayers, Terry Oglesby

Game Time	TCU	Score	Diff	KAN
07:24	12 CORK X 2pt FG second chance in the paint, layup made (3)	19-18	1	
07:17		19-20	-1	24 ADAMS, JR. K 2pt FG fast break in the paint, dunk, made (2)
07:17				3 HARRIS D assist (5)
07:17	2 MILLER E foul shooting (1 - 2)			24 ADAMS, JR. K foul drawn (1)
07:17	Timeout media			
07:17	0 PEAVY M substitution out			
07:17	5 O'BANNON C substitution in			
07:17		19-21	-2	24 ADAMS, JR. K free throw fast break 1 - 1 made (3)
06:56	2 MILLER E 2pt FG in the paint, turnaround jump shot missed			
06:54				0 PETTIFORD B defensive rebound (1)
06:40				1 YESUFU J 3pt FG , jump shot blocked
06:40	5 O'BANNON C block (1)			
06:37	5 O'BANNON C defensive rebound (1)			
06:37				1 YESUFU J substitution out
06:37				11 RICE M substitution in
06:18	2 MILLER E 2pt FG outside the paint, jump shot missed			
06:14	2 MILLER E offensive rebound (3)			
06:14	2 MILLER E 2pt FG second chance in the paint, layup missed			
06:14				11 RICE M defensive rebound (1)
06:03	10 BAUGH D steal (1)			24 ADAMS, JR. K turnover bad pass (2)
05:59	10 BAUGH D 2pt FG fast break from turnover in the paint, layup made (2)	21-21	0	
05:38				24 ADAMS, JR. K 2pt FG in the paint, layup missed
05:33				24 ADAMS, JR. K offensive rebound (3)
05:33	jump ball situation			
05:33	5 O'BANNON C substitution out			
05:33	12 CORK X substitution out			
05:33	0 PEAVY M substitution in			
05:33	4 LAMPKIN E substitution in			
05:33				0 PETTIFORD B substitution out
05:33				15 MCCULLAR K substitution out
05:33				4 DICK G substitution in
05:33				10 WILSON J substitution in
05:27	2 MILLER E foul personal (2 - 3)			10 WILSON J foul drawn (1)
05:27	2 MILLER E substitution out			
05:27	21 COLES J substitution in			
05:25	21 COLES J foul personal (1 - 4)			10 WILSON J foul drawn (2)
05:17				11 RICE M 2pt FG second chance in the paint, layup missed
05:15	21 COLES J defensive rebound (1)			
05:09	10 BAUGH D foul drawn (2)			24 ADAMS, JR. K foul shooting (2 - 7)
05:09	10 BAUGH D free throw fast break 1 - 2 missed			
05:09	offensive dead ball rebound (2)			
05:09				11 RICE M substitution out
05:09				24 ADAMS, JR. K substitution out
05:09				15 MCCULLAR K substitution in
05:09				23 UDEH JR. E substitution in
05:09	10 BAUGH D free throw fast break 2 - 2 made (3)	22-21	1	
04:53				4 DICK G 3pt FG , jump shot missed
04:50	21 COLES J defensive rebound (2)			



Official Basketball Play by Play - First Half
Kansas at TCU
 02/20/23 Ed and Rae Schollmaier Arena, Fort Worth
 2022-23 Men's Basketball

Game Time: 8:00 PM
Game Duration: 2:03
Attendance: 7,831

Officials: Kipp Kissinger, Roger Ayers, Terry Oglesby

Game Time	TCU	Score	Diff	KAN
04:43	21 COLES J 3pt FG fast break, jump shot made (7)	25-21	4	
04:43	10 BAUGH D assist (3)			
04:41				Timeout 30 Sec
04:20				3 HARRIS D 2pt FG in the paint, driving layup missed
04:17				3 HARRIS D offensive rebound (4)
04:17		25-23	2	3 HARRIS D 2pt FG second chance in the paint, layup made (2)
04:04	4 LAMPKIN E foul drawn (1)			23 UDEH JR. E foul personal (2 - 8)
04:04	4 LAMPKIN E 1&1 free throw 1 missed			
04:03				10 WILSON J defensive rebound (6)
03:48		25-25	0	15 MCCULLAR K 2pt FG in the paint, pull up jump shot made (6)
03:22	0 PEAVY M 2pt FG in the paint, layup missed			
03:20	4 LAMPKIN E offensive rebound (3)			
03:16	1 MILES M 2pt FG second chance in the paint, driving layup made (5)	27-25	2	
03:16	4 LAMPKIN E assist (2)			
03:03		27-27	0	4 DICK G 2pt FG in the paint, driving layup made (12)
03:03				23 UDEH JR. E assist (1)
02:47	1 MILES M 2pt FG outside the paint, jump shot missed			
02:45				10 WILSON J defensive rebound (7)
02:40		27-29	-2	23 UDEH JR. E 2pt FG fast break in the paint, driving layup made (2)
02:40				15 MCCULLAR K assist (1)
02:25	Timeout 30 Sec			
02:25	Timeout media			
02:25	0 PEAVY M substitution out			
02:25	4 LAMPKIN E substitution out			
02:25	12 CORK X substitution in			
02:25	13 WELLS S substitution in			
02:14	21 COLES J 2pt FG in the paint, layup blocked			
02:14				23 UDEH JR. E block (1)
02:10				10 WILSON J defensive rebound (8)
02:09	21 COLES J steal (2)			10 WILSON J turnover lost ball (2)
02:07	13 WELLS S foul drawn (1)			15 MCCULLAR K foul shooting (1 - 9)
02:07	13 WELLS S free throw fast break 1 - 2 made (1)	28-29	-1	
02:07	13 WELLS S free throw fast break 2 - 2 made (2)	29-29	0	
02:07	13 WELLS S substitution out			
02:07	0 PEAVY M substitution in			
01:47				4 DICK G 2pt FG outside the paint, pull up jump shot missed
01:40				4 DICK G offensive rebound (2)
01:40		29-31	-2	4 DICK G 2pt FG second chance in the paint, layup made (14)
01:21	10 BAUGH D 3pt FG , jump shot missed			
01:19				defensive dead ball rebound (1)
01:19	12 CORK X foul personal (1 - 5)			23 UDEH JR. E foul drawn (1)
01:19	12 CORK X substitution out			
01:19	4 LAMPKIN E substitution in			
01:19				4 DICK G substitution out
01:19				1 YESUFU J substitution in
01:19				0 PETTIFORD B substitution in
01:19				10 WILSON J substitution out



Official Basketball Play by Play - First Half
Kansas at TCU
 02/20/23 Ed and Rae Schollmaier Arena, Fort Worth
 2022-23 Men's Basketball

Game Time: 8:00 PM
Game Duration: 2:03
Attendance: 7,831

Officials: Kipp Kissinger, Roger Ayers, Terry Oglesby

Game Time	TCU	Score	Diff	KAN
01:03	13 WELLS S substitution in			
01:03	10 BAUGH D substitution out			
01:03				3 HARRIS D 2pt FG in the paint, driving layup missed
01:03				offensive rebound (23)
00:47				15 MCCULLAR K 3pt FG second chance, jump shot missed
00:45				offensive dead ball rebound (2)
00:46				turnover shot clock (6)
00:46	0 PEAVY M substitution out			
00:46	5 O'BANNON C substitution in			
00:46	4 LAMPKIN E substitution out			
00:46	2 MILLER E substitution in			
00:34	21 COLES J 3pt FG from turnover, jump shot missed			
00:31	2 MILLER E offensive rebound (4)			
00:28	13 WELLS S 3pt FG from turnover second chance, jump shot blocked			
00:28				15 MCCULLAR K block (1)
00:28	offensive rebound (20)			
00:23	1 MILES M 2pt FG from turnover second chance outside the paint, jump shot missed			
00:20				15 MCCULLAR K defensive rebound (2)
00:01		29-33	-4	23 UDEH JR. E 2pt FG in the paint, dunk, made (4)
00:01				15 MCCULLAR K assist (2)
END OF PERIOD				
TCU 29-33 KAN				



Kansas at TCU

02/20/23 Ed and Rae Schollmaier Arena, Fort Worth
2022-23 Men's Basketball

Game Time: 8:00 PM
Game Duration: 2:03
Attendance: 7,831

Officials: Kipp Kissinger, Roger Ayers, Terry Oglesby

Kansas - 33

NO.	Name	F	Min	FG	3P	FT	Rebounds			Fouls		TP	AS	TO	ST	Blocks		+/-
				M-A	M-A	M-A	OR	DR	TOT	PF	FD					BS	BA	
10	Jalen Wilson	F	15:16	1-3	0-1	0-0	0	8	8	2	2	2	1	2	0	0	0	2
24	KJ Adams, Jr.	F	11:34	1-5	0-1	1-1	1	2	3	2	1	3	0	2	0	0	0	-2
3	Dajuan Harris	G	18:37	1-5	0-0	0-0	4	0	4	0	0	2	5	0	0	0	0	4
4	Gradey Dick	G	14:33	6-11	2-5	0-0	2	0	2	2	1	14	1	0	0	0	0	3
15	Kevin McCullar	G	18:53	3-7	0-2	0-0	0	2	2	1	0	6	2	0	1	1	0	5
23	Ernest Udeh Jr.		08:26	2-2	0-0	0-0	0	0	0	2	1	4	1	0	1	1	0	6
0	Bobby Pettiford		06:50	1-1	0-0	0-0	0	1	1	0	0	2	0	1	0	0	0	1
1	Joseph Yesufu		04:23	0-1	0-1	0-0	0	0	0	0	0	0	0	0	0	0	1	3
11	MJ Rice		01:28	0-1	0-0	0-0	0	1	1	0	0	0	0	0	0	0	0	-2
Team							2	1	3			0		1				
Totals				15-36	2-10	1-1	9	15	24	9	5	33	10	6	2	2	1	4

Shooting By Period		
1st FG%	15-36	41.7%
3PT%	2-10	20.0%
FT%	1-1	100%
GM FG%	15-36	41.7%
3PT%	2-10	20.0%
FT%	1-1	100.0%

Dead Ball Rebounds: 1, 1

Technical Fouls::NONE

TCU - 29

NO.	Name	F	Min	FG	3P	FT	Rebounds			Fouls		TP	AS	TO	ST	Blocks		+/-
				M-A	M-A	M-A	OR	DR	TOT	PF	FD					BS	BA	
2	Emanuel Miller	F	10:51	2-6	0-0	0-1	4	0	4	2	1	4	0	0	0	0	0	-6
4	Eddie Lampkin	C	12:16	1-2	0-0	0-1	2	1	3	0	1	2	2	0	0	0	0	2
0	Micah Peavy	G	14:20	1-4	0-1	1-1	1	1	2	1	1	3	0	1	0	0	0	-5
1	Mike Miles	G	18:58	2-7	1-2	0-0	0	3	3	0	2	5	0	1	0	0	0	-6
10	Damion Baugh	G	15:26	1-6	0-2	1-2	0	2	2	0	2	3	3	1	1	0	0	-6
12	Xavier Cork		06:58	1-2	0-0	1-2	1	0	1	1	1	3	0	0	0	0	0	-4
5	Chuck O'Bannon		05:22	0-0	0-0	0-0	0	1	1	0	0	0	1	0	0	1	0	-1
21	JaKobe Coles		09:55	3-5	1-2	0-0	0	2	2	1	0	7	0	0	2	0	1	0
13	Shahada Wells		05:54	0-2	0-2	2-2	0	2	0	0	1	2	1	0	0	0	1	6
Team							1	1	2			0		0				
Totals				11-34	2-9	5-9	9	11	20	5	9	29	7	3	3	1	2	-4

Shooting By Period		
1st FG%	11-34	32.4%
3PT%	2-9	22.2%
FT%	5-9	55.6%
GM FG%	11-34	32.4%
3PT%	2-9	22.2%
FT%	5-9	55.6%

Dead Ball Rebounds: 2, 0

Technical Fouls::NONE

	KAN	TCU
Biggest lead	7 (1st 15:50)	4 (1st 4:43)
Best Scoring Run	7(1st 15:50)	6(1st 4:43)
Lead Changes	6	
Times Tied	5	
Time with Lead	11:34	02:51

Points from	KAN	TCU
Turnovers	2	8
Paint	22	18
Second Chance	8	10
Fast Breaks	8	12
Bench	6	12

	Period by Period Scoring		
	1st	2nd	TOT
KAN	33	30	63
TCU	29	29	58



Officials: Kipp Kissinger, Roger Ayers, Terry Oglesby

Period 2

Quarter Starters:

TCU	0 Peavy M	1 Miles M	2 Miller E	4 Lampkin E	10 Baugh D
KAN	3 Harris D	4 Dick G	10 Wilson J	15 McCullar K	24 Adams, Jr. K

Game Time	TCU	Score	Diff	KAN
20:00	0 PEAVY M substitution in			
20:00	5 O'BANNON C substitution out			
20:00	13 WELLS S substitution out			
20:00	21 COLES J substitution out			
20:00	4 LAMPKIN E substitution in			
20:00	10 BAUGH D substitution in			
20:00				0 PETTIFORD B substitution out
20:00				1 YESUFU J substitution out
20:00				23 UDEH JR. E substitution out
20:00				4 DICK G substitution in
20:00				10 WILSON J substitution in
20:00				24 ADAMS, JR. K substitution in
19:51	10 BAUGH D 3pt FG , jump shot made (6)	32-33	-1	
19:51	1 MILES M assist (1)			
19:32	0 PEAVY M foul shooting (2 - 1)			4 DICK G foul drawn (2)
19:32	0 PEAVY M substitution out			
19:32	5 O'BANNON C substitution in			
19:32		32-34	-2	4 DICK G free throw 1 - 2 made (15)
19:32		32-35	-3	4 DICK G free throw 2 - 2 made (16)
19:02	2 MILLER E turnover bad pass (1)			10 WILSON J steal (1)
18:49				10 WILSON J 2pt FG from turnover in the paint, layup missed
18:46	10 BAUGH D defensive rebound (3)			
18:42	10 BAUGH D 2pt FG in the paint, driving layup missed			
18:38				4 DICK G defensive rebound (3)
18:31	1 MILES M foul drawn (3)			10 WILSON J foul offensive (3 - 1)
18:31				10 WILSON J turnover offensive (3)
18:13	2 MILLER E 2pt FG from turnover outside the paint, pull up jump shot missed			
18:09				24 ADAMS, JR. K defensive rebound (4)
17:59		32-38	-6	4 DICK G 3pt FG , jump shot made (19)
17:59				10 WILSON J assist (2)
17:36	1 MILES M 2pt FG in the paint, dunk, made (7)	34-38	-4	
17:36	10 BAUGH D assist (4)			
17:26				4 DICK G 3pt FG , jump shot blocked
17:26	5 O'BANNON C block (2)			
17:26				offensive rebound (27)
17:16	10 BAUGH D steal (2)			4 DICK G turnover bad pass (1)
17:11	5 O'BANNON C 2pt FG from turnover in the paint, driving layup missed			
17:08				24 ADAMS, JR. K defensive rebound (5)
17:04		34-40	-6	15 MCCULLAR K 2pt FG fast break in the paint, driving layup made (8)
17:04				24 ADAMS, JR. K assist (1)
17:04	5 O'BANNON C foul shooting (1 - 2)			15 MCCULLAR K foul drawn (1)



Kansas at TCU

Officials: Kipp Kissinger, Roger Ayers, Terry Oglesby

Game Time	TCU	Score	Diff	KAN
17:04				15 MCCULLAR K free throw fast break 1 - 1 missed
17:03	2 MILLER E defensive rebound (5)			
16:39	1 MILES M 3pt FG , jump shot made (10)	37-40	-3	
16:39		37-42	-5	24 ADAMS, JR. K 2pt FG in the paint, alleyoop made (5)
16:39				15 MCCULLAR K assist (3)
15:56	5 O'BANNON C 2pt FG in the paint, layup made (2)	39-42	-3	
15:56	1 MILES M assist (2)			
15:32	10 BAUGH D steal (3)			24 ADAMS, JR. K turnover bad pass (3)
15:29	2 MILLER E foul drawn (2)			3 HARRIS D foul shooting (1 - 2)
15:29	Timeout media			
15:29	4 LAMPKIN E substitution out			
15:29	5 O'BANNON C substitution out			
15:29	0 PEAVY M substitution in			
15:29	12 CORK X substitution in			
15:29	2 MILLER E free throw fast break 1 - 2 made (5)	40-42	-2	
15:29	2 MILLER E free throw fast break 2 - 2 made (6)	41-42	-1	
15:10				10 WILSON J 2pt FG in the paint, layup missed
15:07	2 MILLER E defensive rebound (6)			
14:50	1 MILES M 2pt FG in the paint, layup missed			
14:48				15 MCCULLAR K defensive rebound (3)
14:45				10 WILSON J 3pt FG , jump shot missed
14:41	10 BAUGH D defensive rebound (4)			
14:22	1 MILES M turnover bad pass (2)			24 ADAMS, JR. K steal (1)
14:16		41-44	-3	10 WILSON J 2pt FG fast break from turnover in the paint, driving layup made (4)
14:16				4 DICK G assist (2)
14:16	10 BAUGH D foul shooting (1 - 3)			10 WILSON J foul drawn (3)
14:16		41-45	-4	10 WILSON J free throw fast break 1 - 1 made (5)
14:16				10 WILSON J substitution out
14:16				11 RICE M substitution in
14:02	2 MILLER E 3pt FG , jump shot missed			
13:58				defensive rebound (30)
13:42				24 ADAMS, JR. K 2pt FG in the paint, driving layup missed
13:40	2 MILLER E defensive rebound (7)			
13:35	10 BAUGH D 2pt FG in the paint, layup missed			
13:31	12 CORK X offensive rebound (2)			
13:31	12 CORK X 2pt FG second chance in the paint, dunk, missed			
13:30				15 MCCULLAR K defensive rebound (4)
13:29				3 HARRIS D 2pt FG in the paint, driving layup blocked
13:29	2 MILLER E block (1)			
13:28				offensive rebound (32)
13:28	1 MILES M substitution out			
13:28	2 MILLER E substitution out			
13:28	13 WELLS S substitution in			
13:28	21 COLES J substitution in			
13:12				15 MCCULLAR K 2pt FG second chance in the paint, jump shot missed
13:09	13 WELLS S defensive rebound (1)			
12:57	21 COLES J 2pt FG in the paint, hook shot missed			
12:55				4 DICK G defensive rebound (4)



Kansas at TCU

Officials: Kipp Kissinger, Roger Ayers, Terry Oglesby

Game Time	TCU	Score	Diff	KAN
12:51		41-47	-6	11 RICE M 2pt FG fast break in the paint, layup made (2)
12:51				3 HARRIS D assist (6)
12:51	Timeout 30 Sec			
12:51	Timeout media			
12:51	12 CORK X substitution out			
12:51	4 LAMPKIN E substitution in			
12:31	4 LAMPKIN E foul drawn (2)			24 ADAMS, JR. K foul shooting (3 - 3)
12:31	4 LAMPKIN E free throw 1 - 2 missed			
12:31	offensive dead ball rebound (3)			
12:31				24 ADAMS, JR. K substitution out
12:31				23 UDEH JR. E substitution in
12:31	4 LAMPKIN E free throw 2 - 2 missed			
12:30	21 COLES J offensive rebound (3)			
12:28	21 COLES J 2pt FG second chance in the paint, layup made (9)	43-47	-4	
12:28	21 COLES J foul drawn (1)			15 MCCULLAR K foul shooting (2 - 4)
12:28	21 COLES J free throw 1 - 1 made (10)	44-47	-3	
12:05				11 RICE M turnover travel (1)
12:05	10 BAUGH D substitution out			
12:05	1 MILES M substitution in			
12:05				11 RICE M substitution out
12:05				10 WILSON J substitution in
12:05				3 HARRIS D substitution out
12:05				0 PETTIFORD B substitution in
11:50	13 WELLS S turnover bad pass (1)			23 UDEH JR. E steal (2)
11:42				10 WILSON J 2pt FG from turnover in the paint, jump shot missed
11:42	4 LAMPKIN E defensive rebound (4)			
11:35	1 MILES M 2pt FG in the paint, jump shot missed			
11:35	13 WELLS S offensive rebound (2)			
11:26	4 LAMPKIN E 2pt FG second chance in the paint, layup missed			
11:26				15 MCCULLAR K defensive rebound (5)
10:52				4 DICK G 3pt FG , jump shot missed
10:50	13 WELLS S defensive rebound (3)			
10:37	0 PEAVY M 2pt FG fast break in the paint, layup made (5)	46-47	-1	
10:37	13 WELLS S assist (2)			
10:29	0 PEAVY M foul shooting (3 - 4)			15 MCCULLAR K foul drawn (2)
10:29	Timeout media			
10:29	0 PEAVY M substitution out			
10:29	10 BAUGH D substitution in			
10:29				15 MCCULLAR K free throw 1 - 2 missed
10:29				offensive dead ball rebound (3)
10:29		46-48	-2	15 MCCULLAR K free throw 2 - 2 made (9)
10:14	21 COLES J 2pt FG in the paint, layup made (12)	48-48	0	
10:14	21 COLES J foul drawn (2)			23 UDEH JR. E foul shooting (3 - 5)
10:14	13 WELLS S substitution out			
10:14	0 PEAVY M substitution in			
10:14				0 PETTIFORD B substitution out
10:14				23 UDEH JR. E substitution out
10:14				3 HARRIS D substitution in

**Kansas at TCU**02/20/23 Ed and Rae Schollmaier Arena, Fort Worth
2022-23 Men's Basketball

Game Time: 8:00 PM

Game Duration: 2:03

Attendance: 7,831

Officials: Kipp Kissinger, Roger Ayers, Terry Oglesby

Game Time	TCU	Score	Diff	KAN
10:14				24 ADAMS, JR. K substitution in
10:14	21 COLES J free throw 1 - 1 missed			
10:13				24 ADAMS, JR. K defensive rebound (6)
09:59				24 ADAMS, JR. K 2pt FG in the paint, layup missed
09:56	4 LAMPKIN E defensive rebound (5)			
09:50	0 PEAVY M 3pt FG , jump shot missed			
09:46				defensive rebound (36)
09:46	21 COLES J substitution out			
09:46	2 MILLER E substitution in			
09:31				4 DICK G 3pt FG , jump shot missed
09:27	4 LAMPKIN E defensive rebound (6)			
09:17	10 BAUGH D 2pt FG in the paint, driving layup missed			
09:14				4 DICK G defensive rebound (5)
09:11		48-50	-2	3 HARRIS D 2pt FG fast break in the paint, driving layup made (4)
09:11				10 WILSON J assist (3)
09:00	0 PEAVY M substitution out			
09:00	13 WELLS S substitution in			
08:51	2 MILLER E 2pt FG outside the paint, pull up jump shot missed			
08:45				4 DICK G defensive rebound (6)
08:36		48-52	-4	15 MCCULLAR K 2pt FG in the paint, layup made (11)
08:36				24 ADAMS, JR. K assist (2)
08:17	1 MILES M foul drawn (4)			24 ADAMS, JR. K foul shooting (4 - 6)
08:17	1 MILES M free throw 1 - 2 made (11)	49-52	-3	
08:17				24 ADAMS, JR. K substitution out
08:17				23 UDEH JR. E substitution in
08:17	1 MILES M free throw 2 - 2 made (12)	50-52	-2	
08:17	4 LAMPKIN E substitution out			
08:17	12 CORK X substitution in			
08:04		50-54	-4	23 UDEH JR. E 2pt FG in the paint, alleyoop made (6)
08:04				3 HARRIS D assist (7)
07:45	13 WELLS S 2pt FG in the paint, layup missed			
07:42				10 WILSON J defensive rebound (9)
07:26				10 WILSON J 2pt FG in the paint, driving layup missed
07:24	12 CORK X defensive rebound (3)			
07:18	10 BAUGH D 3pt FG fast break, jump shot made (9)	53-54	-1	
07:18	2 MILLER E assist (1)			
06:53				15 MCCULLAR K 2pt FG in the paint, pull up jump shot missed
06:49	1 MILES M defensive rebound (4)			
06:41	1 MILES M 2pt FG in the paint, layup missed			
06:39				defensive rebound (40)
06:39	Timeout media			
06:39	13 WELLS S substitution out			
06:39	0 PEAVY M substitution in			
06:25		53-56	-3	15 MCCULLAR K 2pt FG in the paint, layup made (13)
06:25				3 HARRIS D assist (8)
06:09	0 PEAVY M 3pt FG , jump shot missed			
06:07	offensive rebound (36)			
06:07	0 PEAVY M substitution out			



Kansas at TCU

Officials: Kipp Kissinger, Roger Ayers, Terry Oglesby

Game Time	TCU	Score	Diff	KAN
06:07	12 CORK X substitution out			
06:07	13 WELLS S substitution in			
06:07	21 COLES J substitution in			
05:49	10 BAUGH D 2pt FG second chance in the paint, layup missed			
05:47				10 WILSON J defensive rebound (10)
05:31		53-58	-5	3 HARRIS D 2pt FG in the paint, driving layup made (6)
05:13	10 BAUGH D turnover lost ball (2)			23 UDEH JR. E steal (3)
04:54				10 WILSON J 2pt FG from turnover in the paint, layup blocked
04:54	13 WELLS S block (1)			
04:51				23 UDEH JR. E offensive rebound (1)
04:47				4 DICK G 2pt FG from turnover second chance in the paint, layup missed
04:45				10 WILSON J offensive rebound (11)
04:45		53-60	-7	10 WILSON J 2pt FG from turnover second chance in the paint, layup made (7)
04:41	Timeout 30 Sec			
04:41	21 COLES J substitution out			
04:41	4 LAMPKIN E substitution in			
04:41				23 UDEH JR. E substitution out
04:41				24 ADAMS, JR. K substitution in
04:19	10 BAUGH D 2pt FG in the paint, layup made (11)	55-60	-5	
04:19	4 LAMPKIN E assist (3)			
03:54				4 DICK G 2pt FG in the paint, layup missed
03:52	10 BAUGH D defensive rebound (5)			
03:48	1 MILES M 3pt FG , jump shot missed			
03:45				3 HARRIS D defensive rebound (5)
03:27	1 MILES M foul personal (1 - 5)			10 WILSON J foul drawn (4)
03:27				Timeout media
03:27	13 WELLS S substitution out			
03:27	0 PEAVY M substitution in			
03:21				3 HARRIS D 2pt FG in the paint, layup missed
03:19	4 LAMPKIN E defensive rebound (7)			
02:59	10 BAUGH D 3pt FG , jump shot missed			
02:57				10 WILSON J defensive rebound (12)
02:57	0 PEAVY M foul personal (4 - 6)			10 WILSON J foul drawn (5)
02:43				15 MCCULLAR K 2pt FG in the paint, layup blocked
02:43	10 BAUGH D block (1)			
02:39	4 LAMPKIN E defensive rebound (8)			
02:32	1 MILES M foul drawn (5)			15 MCCULLAR K foul shooting (3 - 7)
02:32	1 MILES M free throw 1 - 2 missed			
02:32	offensive dead ball rebound (4)			
02:32	1 MILES M free throw 2 - 2 made (13)	56-60	-4	
02:32	4 LAMPKIN E substitution out			
02:32	12 CORK X substitution in			
02:12				4 DICK G 3pt FG , jump shot missed
02:08	10 BAUGH D defensive rebound (6)			
02:01	12 CORK X substitution out			
02:01	21 COLES J substitution in			
02:01	0 PEAVY M substitution out			
02:01	13 WELLS S substitution in			



Kansas at TCU

Officials: Kipp Kissinger, Roger Ayers, Terry Oglesby

Game Time	TCU	Score	Diff	KAN
01:44	2 MILLER E foul drawn (3)			10 WILSON J foul shooting (4 - 8)
01:44	2 MILLER E free throw 1 - 2 made (7)	57-60	-3	
01:44	13 WELLS S substitution out			
01:44	21 COLES J substitution out			
01:44	0 PEAVY M substitution in			
01:44	4 LAMPKIN E substitution in			
01:44	2 MILLER E free throw 2 - 2 made (8)	58-60	-2	
01:23	10 BAUGH D foul shooting (2 - 7)			24 ADAMS, JR. K foul drawn (2)
01:23				24 ADAMS, JR. K free throw 1 - 2 missed
01:23				offensive dead ball rebound (4)
01:23	0 PEAVY M substitution out			
01:23	4 LAMPKIN E substitution out			
01:23	13 WELLS S substitution in			
01:23	21 COLES J substitution in			
01:23		58-61	-3	24 ADAMS, JR. K free throw 2 - 2 made (6)
00:58	1 MILES M 2pt FG in the paint, layup missed			
00:55				10 WILSON J defensive rebound (13)
00:35				24 ADAMS, JR. K turnover bad pass (4)
00:26	10 BAUGH D 2pt FG from turnover in the paint, layup blocked			
00:26				15 MCCULLAR K block (2)
00:26				15 MCCULLAR K defensive rebound (6)
00:26	jump ball situation			
00:26	13 WELLS S substitution out			
00:26	0 PEAVY M substitution in			
00:22	1 MILES M foul personal (2 - 8)			10 WILSON J foul drawn (6)
00:22				10 WILSON J 1&1 free throw 1 missed
00:20	13 WELLS S defensive rebound (4)			
00:22	0 PEAVY M substitution out			
00:22	13 WELLS S substitution in			
00:05	10 BAUGH D 3pt FG , jump shot missed			
00:02	13 WELLS S offensive rebound (5)			
00:01	13 WELLS S 2pt FG second chance in the paint, layup missed			
00:00				15 MCCULLAR K defensive rebound (7)
00:01	1 MILES M foul personal (3 - 9)			15 MCCULLAR K foul drawn (3)
00:01		58-62	-4	15 MCCULLAR K 1&1 free throw 1 made (14)
00:01		58-63	-5	15 MCCULLAR K 1&1 free throw 2 made (15)
END OF GAME				
TCU 58-63 KAN				



Kansas at TCU

02/20/23 Ed and Rae Schollmaier Arena, Fort Worth
2022-23 Men's Basketball

Game Time: 8:00 PM
Game Duration: 2:03
Attendance: 7,831

Officials: Kipp Kissinger, Roger Ayers, Terry Oglesby

Kansas - 30

NO.	Name	F	Min	FG	3P	FT	Rebounds			Fouls		TP	AS	TO	ST	Blocks		+/-
				M-A	M-A	M-A	OR	DR	TOT	PF	FD					BS	BA	
10	Jalen Wilson	F	17:49	2-8	0-1	1-2	1	4	5	2	4	5	2	1	1	0	1	2
24	KJ Adams, Jr.	F	14:07	1-3	0-0	1-2	0	3	3	2	1	3	2	2	1	0	0	3
3	Dajuan Harris	G	18:09	2-4	0-0	0-0	0	1	1	1	0	4	3	0	0	0	1	4
4	Gradey Dick	G	20:00	1-7	1-5	2-2	0	4	4	0	1	5	1	1	0	0	1	1
15	Kevin McCullar	G	20:00	3-6	0-0	3-5	0	5	5	2	3	9	1	0	0	1	1	1
1	Joseph Yesufu		00:00	0-0	0-0	0-0	0	0	0	0	0	0	0	0	0	0	0	0
11	MJ Rice		02:11	1-1	0-0	0-0	0	0	0	0	0	2	0	1	0	0	0	-1
23	Ernest Udeh Jr.		05:53	1-1	0-0	0-0	1	0	1	1	0	2	0	0	2	0	0	-2
0	Bobby Pettiford		01:51	0-0	0-0	0-0	0	0	0	0	0	0	0	0	0	0	0	-3
Team							2	3	5			0		0				
Totals				11-30	1-6	7-11	4	20	24	8	9	30	9	5	4	1	4	1

Shooting By Period		
2 nd FG%	11-30	36.7%
3PT%	1-6	16.7%
FT%	7-11	63.6%
GM FG%	11-30	36.7%
3PT%	1-6	16.7%
FT%	7-11	63.6%

Dead Ball Rebounds: 2, 0

Technical Fouls::NONE

TCU - 29

NO.	Name	F	Min	FG	3P	FT	Rebounds			Fouls		TP	AS	TO	ST	Blocks		+/-
				M-A	M-A	M-A	OR	DR	TOT	PF	FD					BS	BA	
2	Emanuel Miller	F	16:18	0-3	0-1	4-4	0	3	3	0	2	4	1	1	0	1	0	-5
4	Eddie Lampkin	C	11:35	0-1	0-0	0-2	0	5	5	0	1	0	1	0	0	0	0	9
0	Micah Peavy	G	09:05	1-3	0-2	0-0	0	0	0	3	0	2	0	0	0	0	0	3
1	Mike Miles	G	18:37	2-7	1-2	3-4	0	1	1	3	3	8	2	1	0	0	0	-2
10	Damion Baugh	G	18:24	3-10	2-4	0-0	0	4	4	2	0	8	1	1	2	1	1	-3
5	Chuck O'Bannon		04:03	1-2	0-0	0-0	0	0	0	1	0	2	0	0	0	1	0	-2
12	Xavier Cork		05:19	0-1	0-0	0-0	1	1	2	0	0	0	0	0	0	0	0	-4
13	Shahada Wells		09:51	0-2	0-0	0-0	2	3	5	0	0	0	1	1	0	1	0	1
21	JaKobe Coles		06:48	2-3	0-0	1-2	1	0	1	0	2	5	0	0	0	0	0	-2
Team							1	0	1			0		0				
Totals				9-32	3-9	8-12	5	17	22	9	8	29	6	4	2	4	1	-1

Shooting By Period		
2 nd FG%	9-32	28.1%
3PT%	3-9	33.3%
FT%	8-12	66.7%
GM FG%	9-32	28.1%
3PT%	3-9	33.3%
FT%	8-12	66.7%

Dead Ball Rebounds: 2, 0

Technical Fouls::NONE

	KAN	TCU
Biggest lead	7 (2 nd 4:45)	0 (1 st 20:00)
Best Scoring Run	6(2 nd 4:45)	5(2 nd 10:37)
Lead Changes	0	
Times Tied	1	
Time with Lead	18:48	00:00

Points from	KAN	TCU
Turnovers	5	2
Paint	20	12
Second Chance	2	3
Fast Breaks	11	7
Bench	4	7

	Period by Period Scoring		
	1st	2nd	TOT
KAN	33	30	63
TCU	29	29	58



Kansas at TCU

02/20/23 Ed and Rae Schollmaier Arena, Fort Worth
2022-23 Men's Basketball

Game Time: 8:00 PM
Game Duration: 2:03
Attendance: 7,831

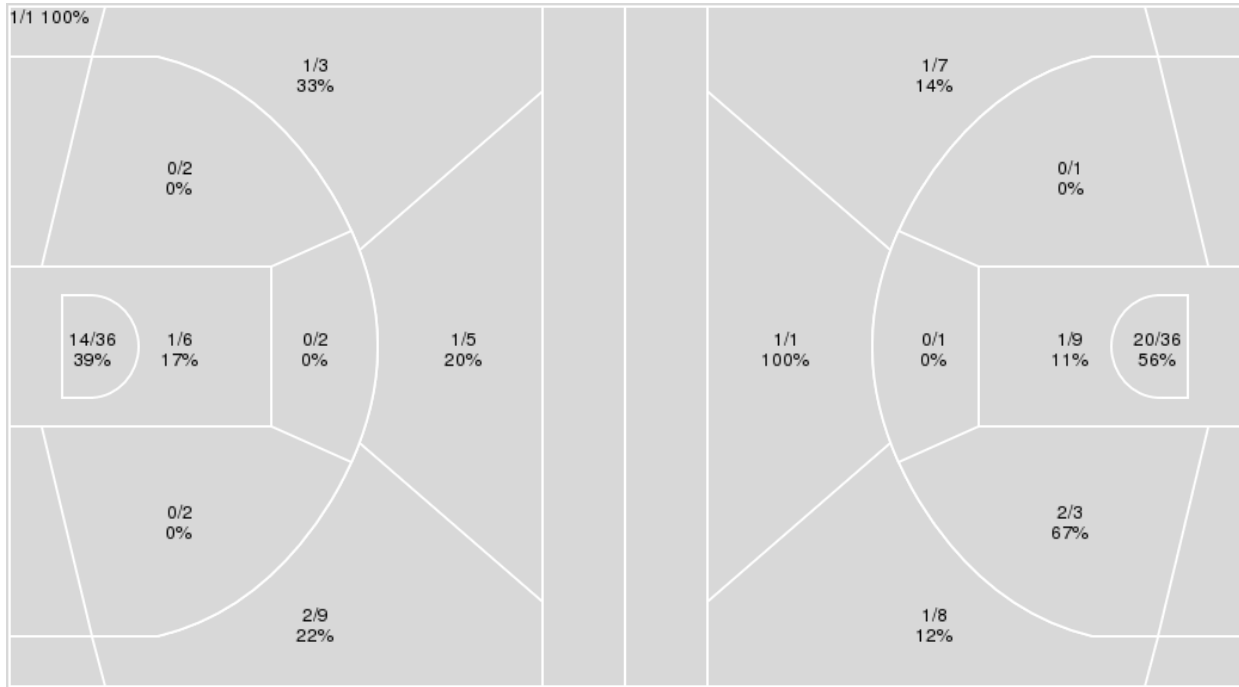
Officials: Kipp Kissinger, Roger Ayers, Terry Oglesby

{ Players => All; } FG Types => All; Results => All;

{ Players => All; } FG Types => All; Results => All;

TCU

Kansas



TCU	M/A	%
Field Goals	20/66	30
2 Points	15/48	31
3 Points	5/18	28
Free Throws	13/21	62

Kansas	M/A	%
Field Goals	26/66	39
2 Points	23/50	46
3 Points	3/16	19
Free Throws	8/12	67



Kansas at TCU

02/20/23 Ed and Rae Schollmaier Arena, Fort Worth
2022-23 Men's Basketball

Game Time: 8:00 PM
Game Duration: 2:03
Attendance: 7,831

Officials: Kipp Kissinger, Roger Ayers, Terry Oglesby

Kansas

No	Name	Mins		Score		Points Diff		Points per Min		Assists		Rebounds		Steals		Turnovers	
		On	Off	On	Off	On	Off	On	Off	On	Off	On	Off	On	Off	On	Off
0	Bobby Pettiford	08:41	31:19	10 - 12	53 - 46	-2	7	1.15	1.69	4	15	9	39	1	5	4	7
1	Joseph Yesufu	04:23	35:37	7 - 4	56 - 54	3	2	1.60	1.57	3	16	5	43	0	6	1	10
3	Dajuan Harris	36:46	03:14	60 - 52	3 - 6	8	-3	1.63	0.93	18	1	46	2	5	1	9	2
4	Gradey Dick	34:33	05:27	56 - 52	7 - 6	4	1	1.62	1.28	16	3	41	7	6	0	9	2
10	Jalen Wilson	33:05	06:55	54 - 50	9 - 8	4	1	1.63	1.30	15	4	38	10	6	0	8	3
11	MJ Rice	03:39	36:21	2 - 5	61 - 53	-3	8	0.55	1.68	1	18	6	42	0	6	2	9
15	Kevin McCullar	38:53	01:07	63 - 57	0 - 1	6	-1	1.62	0.00	19	0	47	1	6	0	11	0
23	Ernest Udeh Jr.	14:19	25:41	28 - 24	35 - 34	4	1	1.96	1.36	8	11	15	33	4	2	4	7
24	KJ Adams, Jr.	25:41	14:19	35 - 34	28 - 24	1	4	1.36	1.96	11	8	33	15	2	4	7	4

TCU

No	Name	Mins		Score		Points Diff		Points per Min		Assists		Rebounds		Steals		Turnovers	
		On	Off	On	Off	On	Off	On	Off	On	Off	On	Off	On	Off	On	Off
0	Micah Peavy	23:25	16:35	30 - 32	28 - 31	-2	-3	1.28	1.69	6	7	30	12	1	4	4	3
1	Mike Miles	37:35	02:25	53 - 61	5 - 2	-8	3	1.41	2.07	13	0	39	3	5	0	7	0
2	Emanuel Miller	27:09	12:51	32 - 43	26 - 20	-11	6	1.18	2.02	7	6	30	12	3	2	4	3
4	Eddie Lampkin	23:51	16:09	44 - 33	14 - 30	11	-16	1.84	0.87	12	1	22	20	3	2	4	3
5	Chuck O'Bannon	09:25	30:35	16 - 19	42 - 44	-3	-2	1.70	1.37	5	8	8	34	3	2	2	5
10	Damion Baugh	33:50	06:10	48 - 57	10 - 6	-9	4	1.42	1.62	10	3	34	8	4	1	5	2
12	Xavier Cork	12:17	27:43	13 - 21	45 - 42	-8	3	1.06	1.62	1	12	16	26	2	3	2	5
13	Shahada Wells	15:45	24:15	27 - 20	31 - 43	7	-12	1.71	1.28	5	8	15	27	2	3	3	4
21	JaKobe Coles	16:43	23:17	27 - 29	31 - 34	-2	-3	1.62	1.33	6	7	16	26	2	3	4	3



Kansas at TCU

02/20/23 Ed and Rae Schollmaier Arena, Fort Worth
2022-23 Men's Basketball

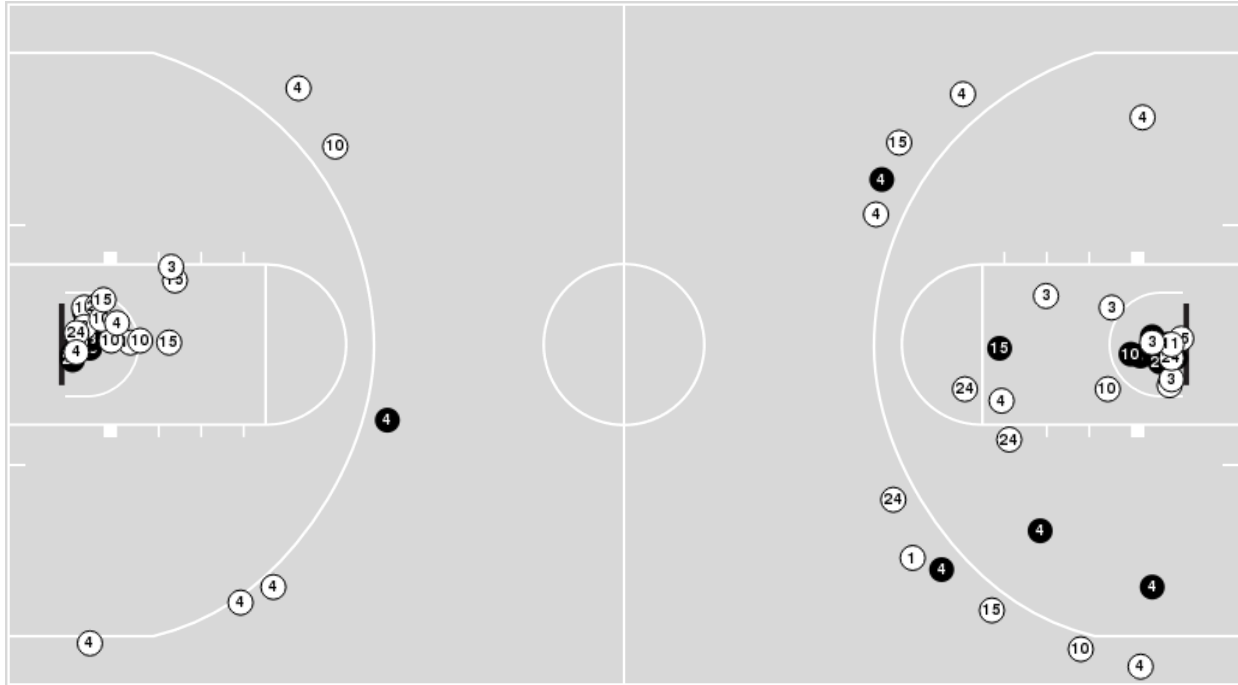
Game Time: 8:00 PM
Game Duration: 2:03
Attendance: 7,831

Officials: Kipp Kissinger, Roger Ayers, Terry Oglesby

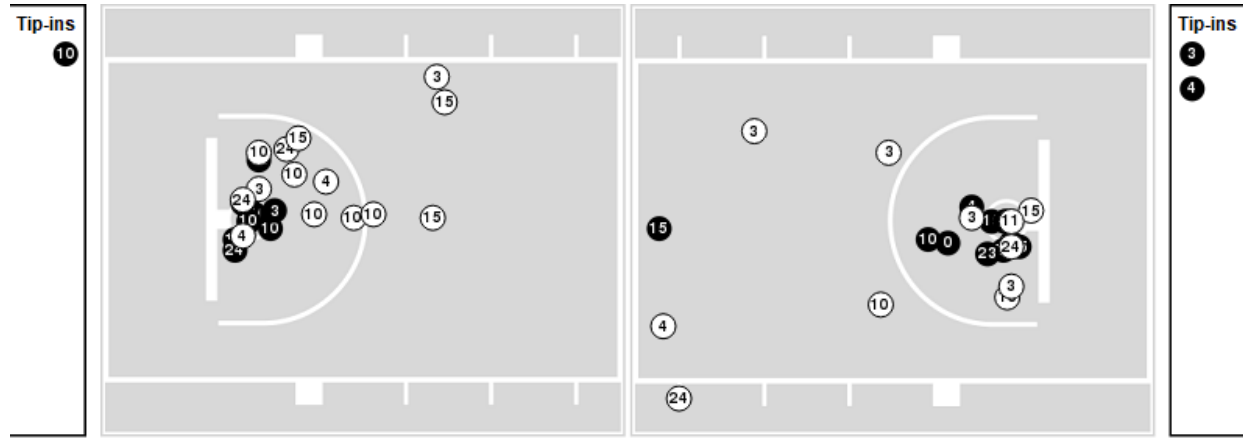
Players => AllFG Types=>AllResults=>All

Kansas

All Field Goals



Blow Up Chart



N Made **O** Missed N - Player Number

Kansas	M/A	%
Field Goals	26/66	39
2 Points	23/50	46
3 Points	3/16	19
Free Throws	8/12	67

Kansas	M/A	%
Points in the Paint	42 (21 / 45)	47
Fast Break Points	19 (11/12)	92
Second Chance Points	10 (5/12)	42
Effective FG%	42	



Kansas at TCU

02/20/23 Ed and Rae Schollmaier Arena, Fort Worth
2022-23 Men's Basketball

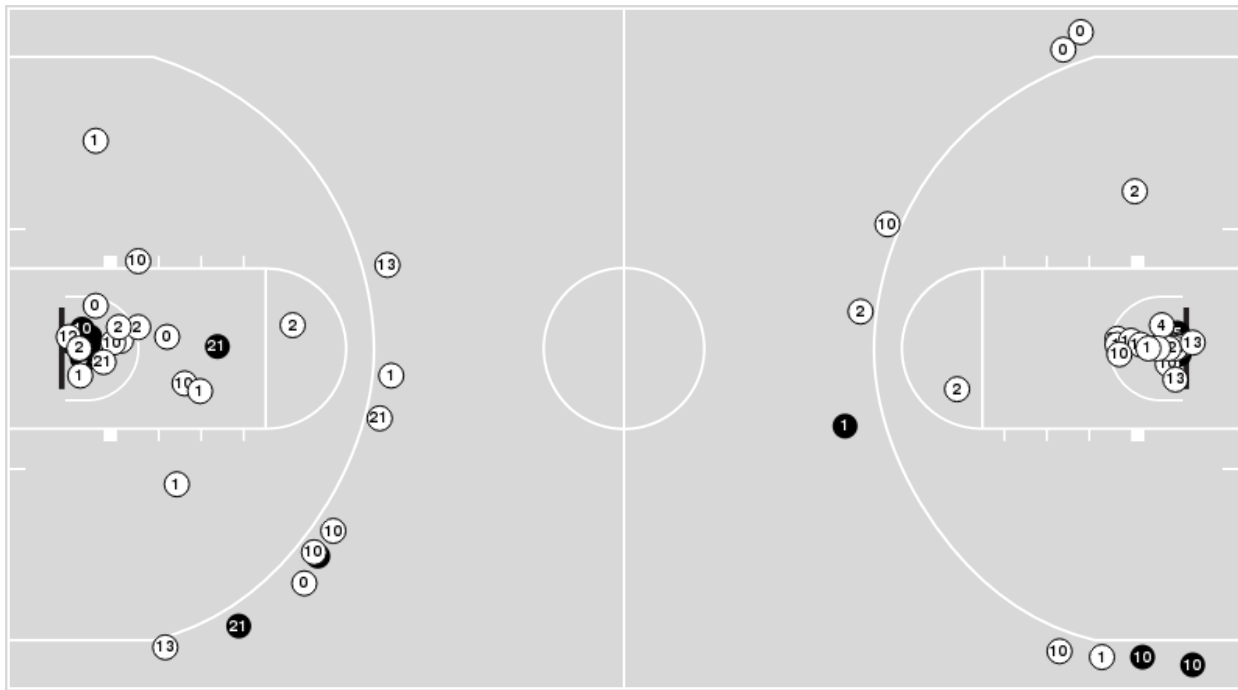
Game Time: 8:00 PM
Game Duration: 2:03
Attendance: 7,831

Officials: Kipp Kissinger, Roger Ayers, Terry Oglesby

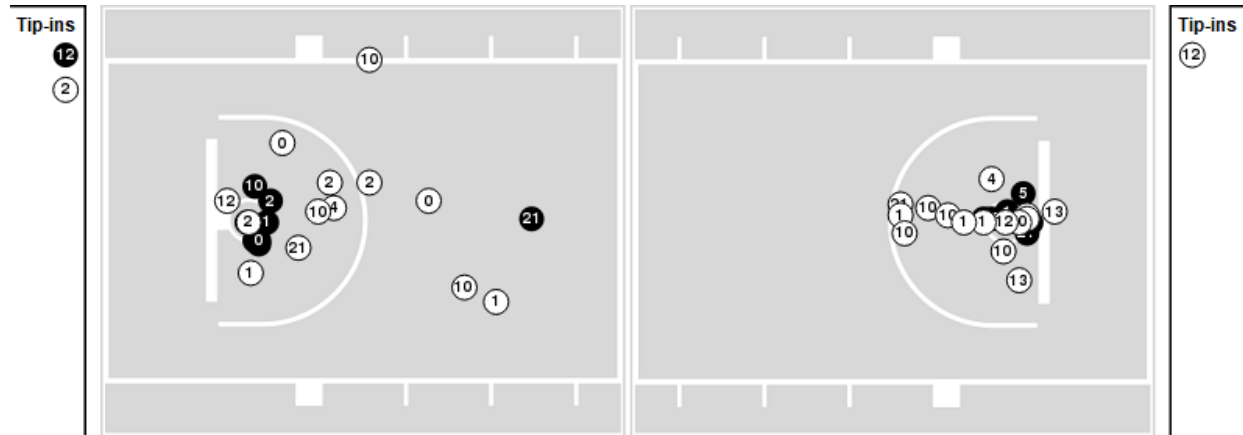
Players => AllFG Types=>AllResults=>All

TCU

All Field Goals



Blow Up Chart



● Made ○ Missed N - Player Number

TCU	M/A	%
Field Goals	20/66	30
2 Points	15/48	31
3 Points	5/18	28
Free Throws	13/21	62

TCU	M/A	%
Points in the Paint	30 (15 / 42)	36
Fast Break Points	19 (11/13)	85
Second Chance Points	13 (7/16)	44
Effective FG%	34	



Officials: Kipp Kissinger, Roger Ayers, Terry Oglesby

Kansas

Lineup	Quarter On	Time On	Quarter Off	Time Off	Time on Court	Score	Score Diff	Reb	Stl	Tov	Ass	PPP
3- Harris D/ 4- Dick G/ 10- Wilson J/ 15- McCullar K/ 24- Adams, Jr. K/	1	20:00	1	15:10	04:50	7-4	3	9	0	1	2	0.8750
3- Harris D/ 4- Dick G/ 10- Wilson J/ 15- McCullar K/ 23- Udeh Jr. E/	1	15:10	1	12:50	02:20	5-3	2	2	2	0	2	1.6667
0- Pettiford B/ 4- Dick G/ 10- Wilson J/ 15- McCullar K/ 23- Udeh Jr. E/	1	12:50	1	11:53	00:57	2-2	0	0	0	1	1	1.0000
0- Pettiford B/ 4- Dick G/ 10- Wilson J/ 15- McCullar K/ 24- Adams, Jr. K/	1	11:53	1	11:27	00:26	0-0	0	1	0	1	0	0.0000
3- Harris D/ 4- Dick G/ 10- Wilson J/ 15- McCullar K/ 24- Adams, Jr. K/	1	11:27	1	09:41	01:46	2-6	-4	0	0	0	0	1.0000
0- Pettiford B/ 1- Yesufu J/ 3- Harris D/ 10- Wilson J/ 24- Adams, Jr. K/	1	09:41	1	08:58	00:43	0-1	-1	1	0	0	0	0.0000
0- Pettiford B/ 1- Yesufu J/ 3- Harris D/ 15- McCullar K/ 24- Adams, Jr. K/	1	08:58	1	06:37	02:21	5-3	2	2	0	0	2	1.1261
0- Pettiford B/ 3- Harris D/ 11- Rice M/ 15- McCullar K/ 24- Adams, Jr. K/	1	06:37	1	05:33	01:04	0-2	-2	2	0	1	0	0.0000
3- Harris D/ 4- Dick G/ 10- Wilson J/ 11- Rice M/ 24- Adams, Jr. K/	1	05:33	1	05:09	00:24	0-0	0	0	0	0	0	0.0000
3- Harris D/ 4- Dick G/ 10- Wilson J/ 15- McCullar K/ 23- Udeh Jr. E/	1	05:09	1	01:19	03:50	10-8	2	5	0	1	2	1.4286
0- Pettiford B/ 1- Yesufu J/ 3- Harris D/ 15- McCullar K/ 23- Udeh Jr. E/	1	01:19	2	20:00	01:19	2-0	2	2	0	1	1	0.6667
3- Harris D/ 4- Dick G/ 10- Wilson J/ 15- McCullar K/ 24- Adams, Jr. K/	2	20:00	2	14:16	05:44	12-12	0	5	2	3	4	1.0204
3- Harris D/ 4- Dick G/ 11- Rice M/ 15- McCullar K/ 24- Adams, Jr. K/	2	14:16	2	12:31	01:45	2-0	2	4	0	0	1	0.6667
3- Harris D/ 4- Dick G/ 11- Rice M/ 15- McCullar K/ 23- Udeh Jr. E/	2	12:31	2	12:05	00:26	0-3	-3	0	0	1	0	0.0000
3- Harris D/ 4- Dick G/ 10- Wilson J/ 15- McCullar K/ 23- Udeh Jr. E/	2	12:05	2	12:05	00:00	0-0	0	0	0	0	0	0.0000
0- Pettiford B/ 4- Dick G/ 10- Wilson J/ 15- McCullar K/ 23- Udeh Jr. E/	2	12:05	2	10:14	01:51	1-4	-3	1	1	0	0	0.3472
3- Harris D/ 4- Dick G/ 10- Wilson J/ 15- McCullar K/ 24- Adams, Jr. K/	2	10:14	2	08:17	01:57	4-1	3	4	0	0	2	1.0000
3- Harris D/ 4- Dick G/ 10- Wilson J/ 15- McCullar K/ 23- Udeh Jr. E/	2	08:17	2	04:41	03:36	8-4	4	5	1	0	2	1.3333
3- Harris D/ 4- Dick G/ 10- Wilson J/ 15- McCullar K/ 24- Adams, Jr. K/	2	04:41	2	00:00	04:41	3-5	-2	5	0	1	0	0.4167



Officials: Kipp Kissinger, Roger Ayers, Terry Oglesby

TCU

Lineup	Quarter On	Time On	Quarter Off	Time Off	Time on Court	Score	Score Diff	Reb	Stl	Tov	Ass	PPP
0- Peavy M/ 1- Miles M/ 2- Miller E/ 4- Lampkin E/ 10- Baugh D/	1	20:00	1	17:48	02:12	0-0	0	3	0	0	0	0.0000
0- Peavy M/ 1- Miles M/ 2- Miller E/ 10- Baugh D/ 12- Cork X/	1	17:48	1	16:04	01:44	0-5	-5	2	0	1	0	0.0000
1- Miles M/ 2- Miller E/ 4- Lampkin E/ 5- O'Bannon C/ 10- Baugh D/	1	16:04	1	14:09	01:55	4-4	0	2	0	0	2	1.6393
1- Miles M/ 4- Lampkin E/ 5- O'Bannon C/ 10- Baugh D/ 21- Coles J/	1	14:09	1	13:12	00:57	3-3	0	0	0	1	1	1.5000
0- Peavy M/ 1- Miles M/ 4- Lampkin E/ 13- Wells S/ 21- Coles J/	1	13:12	1	09:41	03:31	8-4	4	3	1	1	2	1.3333
0- Peavy M/ 2- Miller E/ 10- Baugh D/ 12- Cork X/ 13- Wells S/	1	09:41	1	08:39	01:02	2-0	2	1	0	0	0	1.5152
0- Peavy M/ 1- Miles M/ 2- Miller E/ 10- Baugh D/ 12- Cork X/	1	08:39	1	07:17	01:22	2-4	-2	2	0	0	0	1.0000
1- Miles M/ 2- Miller E/ 5- O'Bannon C/ 10- Baugh D/ 12- Cork X/	1	07:17	1	05:33	01:44	2-1	1	2	1	0	0	0.6667
0- Peavy M/ 1- Miles M/ 2- Miller E/ 4- Lampkin E/ 10- Baugh D/	1	05:33	1	05:27	00:06	0-0	0	0	0	0	0	0.0000
0- Peavy M/ 1- Miles M/ 4- Lampkin E/ 10- Baugh D/ 21- Coles J/	1	05:27	1	02:25	03:02	6-8	-2	3	0	0	2	1.3889
1- Miles M/ 10- Baugh D/ 12- Cork X/ 13- Wells S/ 21- Coles J/	1	02:25	1	02:07	00:18	2-0	2	0	1	0	0	1.0638
0- Peavy M/ 1- Miles M/ 10- Baugh D/ 12- Cork X/ 21- Coles J/	1	02:07	1	01:19	00:48	0-2	-2	0	0	0	0	0.0000
0- Peavy M/ 1- Miles M/ 4- Lampkin E/ 10- Baugh D/ 21- Coles J/	1	01:19	1	01:03	00:16	0-0	0	0	0	0	0	0.0000
0- Peavy M/ 1- Miles M/ 4- Lampkin E/ 13- Wells S/ 21- Coles J/	1	01:03	1	00:46	00:17	0-0	0	0	0	0	0	0.0000
1- Miles M/ 2- Miller E/ 5- O'Bannon C/ 13- Wells S/ 21- Coles J/	1	00:46	2	20:00	00:46	0-2	-2	2	0	0	0	0.0000
0- Peavy M/ 1- Miles M/ 2- Miller E/ 4- Lampkin E/ 10- Baugh D/	2	20:00	2	19:32	00:28	3-0	3	0	0	0	1	3.0000
1- Miles M/ 2- Miller E/ 4- Lampkin E/ 5- O'Bannon C/ 10- Baugh D/	2	19:32	2	15:29	04:03	7-9	-2	2	2	1	2	1.0000
0- Peavy M/ 1- Miles M/ 2- Miller E/ 10- Baugh D/ 12- Cork X/	2	15:29	2	13:28	02:01	2-3	-1	4	0	1	0	0.4098
0- Peavy M/ 10- Baugh D/ 12- Cork X/ 13- Wells S/ 21- Coles J/	2	13:28	2	12:51	00:37	0-2	-2	1	0	0	0	0.0000
0- Peavy M/ 4- Lampkin E/ 10- Baugh D/ 13- Wells S/ 21- Coles J/	2	12:51	2	12:05	00:46	3-0	3	1	0	0	0	2.2727
0- Peavy M/ 1- Miles M/ 4- Lampkin E/ 13- Wells S/ 21- Coles J/	2	12:05	2	10:29	01:36	2-0	2	3	0	1	1	0.6667
1- Miles M/ 4- Lampkin E/ 10- Baugh D/ 13- Wells S/ 21- Coles J/	2	10:29	2	10:14	00:15	2-1	1	0	0	0	0	2.0000
0- Peavy M/ 1- Miles M/ 4- Lampkin E/ 10- Baugh D/ 21- Coles J/	2	10:14	2	09:46	00:28	0-0	0	1	0	0	0	0.0000
0- Peavy M/ 1- Miles M/ 2- Miller E/ 4- Lampkin E/ 10- Baugh D/	2	09:46	2	09:00	00:46	0-2	-2	1	0	0	0	0.0000
1- Miles M/ 2- Miller E/ 4- Lampkin E/ 10- Baugh D/ 13- Wells S/	2	09:00	2	08:17	00:43	2-2	0	0	0	0	0	1.0638
1- Miles M/ 2- Miller E/ 10- Baugh D/ 12- Cork X/ 13- Wells S/	2	08:17	2	06:39	01:38	3-2	1	2	0	0	1	1.0000
0- Peavy M/ 1- Miles M/ 2- Miller E/ 10- Baugh D/ 12- Cork X/	2	06:39	2	06:07	00:32	0-2	-2	1	0	0	0	0.0000
1- Miles M/ 2- Miller E/ 10- Baugh D/ 13- Wells S/ 21- Coles J/	2	06:07	2	04:41	01:26	0-4	-4	0	0	1	0	0.0000
1- Miles M/ 2- Miller E/ 4- Lampkin E/ 10- Baugh D/ 13- Wells S/	2	04:41	2	03:27	01:14	2-0	2	1	0	0	1	1.0000
0- Peavy M/ 1- Miles M/ 2- Miller E/ 4- Lampkin E/ 10- Baugh D/	2	03:27	2	02:32	00:55	1-0	1	2	0	0	0	0.5319
0- Peavy M/ 1- Miles M/ 2- Miller E/ 10- Baugh D/ 12- Cork X/	2	02:32	2	02:01	00:31	0-0	0	1	0	0	0	0.0000
0- Peavy M/ 1- Miles M/ 2- Miller E/ 10- Baugh D/ 21- Coles J/	2	02:01	2	02:01	00:00	0-0	0	0	0	0	0	0.0000
1- Miles M/ 2- Miller E/ 10- Baugh D/ 13- Wells S/ 21- Coles J/	2	02:01	2	01:44	00:17	1-0	1	0	0	0	0	2.2727
0- Peavy M/ 1- Miles M/ 2- Miller E/ 4- Lampkin E/ 10- Baugh D/	2	01:44	2	01:23	00:21	1-0	1	0	0	0	0	2.2727
1- Miles M/ 2- Miller E/ 10- Baugh D/ 13- Wells S/ 21- Coles J/	2	01:23	2	00:26	00:56	0-1	-1	0	0	0	0	0.0000
0- Peavy M/ 1- Miles M/ 2- Miller E/ 10- Baugh D/ 21- Coles J/	2	00:26	2	00:22	00:04	0-0	0	1	0	0	0	0.0000
1- Miles M/ 2- Miller E/ 10- Baugh D/ 13- Wells S/ 21- Coles J/	2	00:22	2	00:00	00:23	0-2	-2	1	0	0	0	0.0000



Kansas at TCU

02/20/23 Ed and Rae Schollmaier Arena, Fort Worth
2022-23 Men's Basketball

Game Time: 8:00 PM
Game Duration: 2:03
Attendance: 7,831

Officials: Kipp Kissinger, Roger Ayers, Terry Oglesby

Kansas

Lineup	Time	Score	Score Diff	Pts/Min	Reb	Stl	Tov	Ass	PPP
3- Harris D/ 4- Dick G/ 10- Wilson J/ 15- McCullar K/ 24- Adams, Jr. K/	18:58	28-28	0	1.4763	23	2	5	8	0.8495
3- Harris D/ 4- Dick G/ 10- Wilson J/ 15- McCullar K/ 23- Udeh Jr. E/	09:46	23-15	8	2.3549	12	3	1	6	1.4375
0- Pettiford B/ 4- Dick G/ 10- Wilson J/ 15- McCullar K/ 23- Udeh Jr. E/	02:48	3-6	-3	1.0714	1	1	1	1	0.6148
0- Pettiford B/ 1- Yesufu J/ 3- Harris D/ 15- McCullar K/ 24- Adams, Jr. K/	02:21	5-3	2	2.1277	2	0	0	2	1.1261
3- Harris D/ 4- Dick G/ 11- Rice M/ 15- McCullar K/ 24- Adams, Jr. K/	01:45	2-0	2	1.1429	4	0	0	1	0.6667
0- Pettiford B/ 1- Yesufu J/ 3- Harris D/ 15- McCullar K/ 23- Udeh Jr. E/	01:19	2-0	2	1.5190	2	0	1	1	0.6667
0- Pettiford B/ 3- Harris D/ 11- Rice M/ 15- McCullar K/ 24- Adams, Jr. K/	01:04	0-2	-2	0.0000	2	0	1	0	0.0000
0- Pettiford B/ 1- Yesufu J/ 3- Harris D/ 10- Wilson J/ 24- Adams, Jr. K/	00:43	0-1	-1	0.0000	1	0	0	0	0.0000
0- Pettiford B/ 4- Dick G/ 10- Wilson J/ 15- McCullar K/ 24- Adams, Jr. K/	00:26	0-0	0	0.0000	1	0	1	0	0.0000
3- Harris D/ 4- Dick G/ 11- Rice M/ 15- McCullar K/ 23- Udeh Jr. E/	00:26	0-3	-3	0.0000	0	0	1	0	0.0000
3- Harris D/ 4- Dick G/ 10- Wilson J/ 11- Rice M/ 24- Adams, Jr. K/	00:24	0-0	0	0.0000	0	0	0	0	0.0000



Official Basketball Line Up Analysis - Final
Kansas at TCU
 02/20/23 Ed and Rae Schollmaier Arena, Fort Worth
 2022-23 Men's Basketball

Game Time: 8:00 PM
Game Duration: 2:03
Attendance: 7,831

Officials: Kipp Kissinger, Roger Ayers, Terry Oglesby

TCU

Lineup	Time	Score	Score Diff	Pts/Min	Reb	Stl	Tov	Ass	PPP
0- Peavy M/ 1- Miles M/ 2- Miller E/ 10- Baugh D/ 12- Cork X/	06:10	4-14	-10	0.6486	10	0	2	0	0.4049
1- Miles M/ 2- Miller E/ 4- Lampkin E/ 5- O'Bannon C/ 10- Baugh D/	05:58	11-13	-2	1.8436	4	2	1	4	1.1653
0- Peavy M/ 1- Miles M/ 4- Lampkin E/ 13- Wells S/ 21- Coles J/	05:24	10-4	6	1.8519	6	1	2	3	1.1111
0- Peavy M/ 1- Miles M/ 2- Miller E/ 4- Lampkin E/ 10- Baugh D/	04:48	5-2	3	1.0417	6	0	0	1	0.6010
0- Peavy M/ 1- Miles M/ 4- Lampkin E/ 10- Baugh D/ 21- Coles J/	03:46	6-8	-2	1.5929	4	0	0	2	1.0417
1- Miles M/ 2- Miller E/ 10- Baugh D/ 13- Wells S/ 21- Coles J/	03:02	1-7	-6	0.3297	1	0	1	0	0.1838
1- Miles M/ 2- Miller E/ 4- Lampkin E/ 10- Baugh D/ 13- Wells S/	01:57	4-2	2	2.0513	1	0	0	1	1.0309
1- Miles M/ 2- Miller E/ 5- O'Bannon C/ 10- Baugh D/ 12- Cork X/	01:44	2-1	1	1.1538	2	1	0	0	0.6667
1- Miles M/ 2- Miller E/ 10- Baugh D/ 12- Cork X/ 13- Wells S/	01:38	3-2	1	1.8367	2	0	0	1	1.0000
0- Peavy M/ 2- Miller E/ 10- Baugh D/ 12- Cork X/ 13- Wells S/	01:02	2-0	2	1.9355	1	0	0	0	1.5152
1- Miles M/ 4- Lampkin E/ 5- O'Bannon C/ 10- Baugh D/ 21- Coles J/	00:57	3-3	0	3.1579	0	0	1	1	1.5000
0- Peavy M/ 1- Miles M/ 10- Baugh D/ 12- Cork X/ 21- Coles J/	00:48	0-2	-2	0.0000	0	0	0	0	0.0000
1- Miles M/ 2- Miller E/ 5- O'Bannon C/ 13- Wells S/ 21- Coles J/	00:46	0-2	-2	0.0000	2	0	0	0	0.0000
0- Peavy M/ 4- Lampkin E/ 10- Baugh D/ 13- Wells S/ 21- Coles J/	00:46	3-0	3	3.9130	1	0	0	0	2.2727
0- Peavy M/ 10- Baugh D/ 12- Cork X/ 13- Wells S/ 21- Coles J/	00:37	0-2	-2	0.0000	1	0	0	0	0.0000
1- Miles M/ 10- Baugh D/ 12- Cork X/ 13- Wells S/ 21- Coles J/	00:18	2-0	2	6.6667	0	1	0	0	1.0638
1- Miles M/ 4- Lampkin E/ 10- Baugh D/ 13- Wells S/ 21- Coles J/	00:15	2-1	1	8.0000	0	0	0	0	2.0000
0- Peavy M/ 1- Miles M/ 2- Miller E/ 10- Baugh D/ 21- Coles J/	00:04	0-0	0	0.0000	1	0	0	0	0.0000