

GET IN THE KNOW ABOUT

KU WOMEN'S GOLF



THE WEATHER IN LAWRENCE, KS

- Lawrence sits at just above 866 feet in elevation
- Although it does snow in Lawrence, it typically only snows 13 inches in a year and the average monthly totals of 4 inches come in the off-season and start to our season (December-February)
- March through May the weather is perfect for playing and practicing (average high of 65 degrees)
- KU is on winter break from December 18th-January 18th and the team typically travels to Arizona before the start of the spring season for a practice training trip



THINGS TO DO IN LAWRENCE



Lawrence, a progressive city of about 100,000 in northeast Kansas, consistently rates as a Top 10 town for its college life, sports, arts, and live music scene.

Attractions

- Massachusetts St. for dining and shopping (downtown Lawrence)
- Rock Chalk Park for sports training
- DeBruce Center (next to Allen Fieldhouse) that hosts the “Rules of Basketball”
- Hobbs Memorial Park, Watkins Museum of History, and Grinter “Sunflower” Farms



ATHLETICS & RECREATION

- The University of Kansas officially sponsors 18 sports: 7 men's and 11 women's.
- Men's sports: basketball, golf, baseball, cross country, football, and track field (indoor and outdoor)
- Women's sports: basketball, rowing, softball, cross country, track and field (indoor and outdoor), golf, soccer, swimming and diving, tennis, volleyball.
- The Jayhawks have won total of 170 conference titles all-time, 24 championships since joining the Big 12. Note that approximately 1/3 of those are from the men's basketball
- 14 National Championships (6 men's basketball, 1 men's CC, men's indoor track and field, 3 men's outdoor track and field, 1 women's track and field



NOTABLE FORMER STUDENT-ATHLETES

Phog Allen

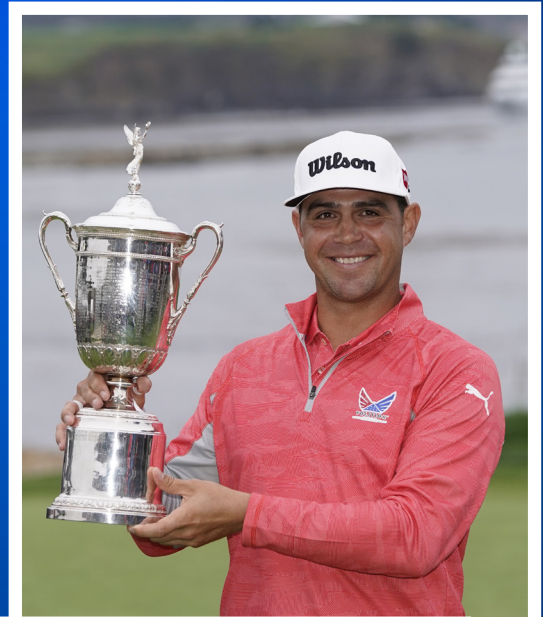


- Ochai Agabji
- Phog Allen
- Christian Braun
- Wilt Chamberlain
- Joel Embiid
- Clyde Lovellette
- Danny Manning
- Dean Smith
- Marilynn Smith
- Lynette Woodard
- Gary Woodland
- Paul Pierce
- Rob Thomson



Joel Embiid

Gary Woodland



Christian Braun



NOTABLE FORMER FEMALE STUDENT-GOLFERS

Marilynn Smith

One of the 13 Founders of the LPGA

Professional Golfer

Tour Champion



Yupaporn Kawinpakorn

2016 WGCA All-American Honorable Mention

Won 5 events senior year

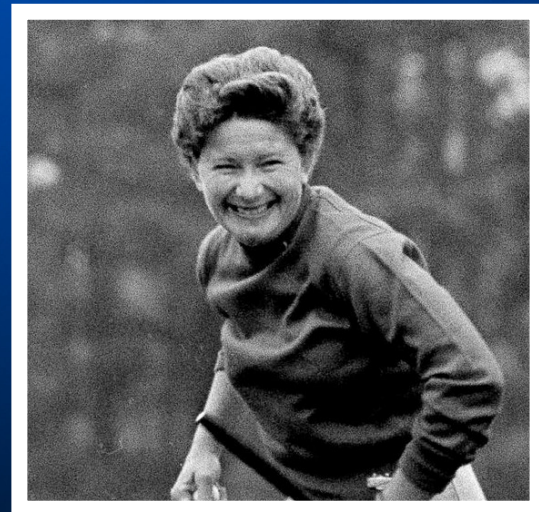
Averaged 71.2 stroke average senior year

3 Time All-Big 12 selection



JAYHAWKS PAST SUCCESS

- Marilyn Smith was one of the original 13 founders of the Ladies Professional Golf Association (LPGA) in 1950 and is a charter member of the organization.
- A three-time President of the LPGA, Smith's influential career as a professional golfer and leader helped pave the way for future women amateurs.
- Smith won 22 times on the LPGA tour, including the 1963 Titleholders, one of the major women's events at the time, in an 18-hole playoff win over Mickey Wright.
- Her two-year career at KU was highlighted by a 1949 National Collegiate Individual title.
- From 1954-72, she won at least one tour event in 14 of 19 years, winning the Titleholders Championship in 1963 and 1964.
- Golf Digest presented her the LPGA Founders Cup for charitable service off the course in 1983.
- She was selected as one of the Distinguished Champions of the Vincent T. Lombardi Tournament in 1987.



UNIVERSITY OF KANSAS ACADEMICS

- KU has an undergraduate population of just under 19,135 students and the student to faculty ratio is 17:1
- 46.7% of classes have fewer than 20 students (2019)
- 200+ Undergraduate fields of study including Sport Management
- WGCA All-American Scholars (55) - 3.5 GPA or higher and competed in 50% or more of regular scheduled tournaments throughout the year
- Most recent: Johanna Ebner, Esme, Hamilton, Lauren Heinlein, Abby Glynn, Jordan Rothman and Anna Shultse



UNIVERSITY OF KANSAS

- Public University
- Enrollment (2022)
Undergrad: 17,985

Graduate: 8180
- Campus Setting
Tree shaded 1,000 acre campus

10 minute drive to downtown Lawrence

We embrace our role as the state's flagship university and a premier research institution, serving the state, nation, and world. We celebrate the energy and compassion that infuse the Jayhawk spirit. And we remain true to our historic values: the elevating force of education, the transformative power of research, and the healing power of service.





QUALITY OF EDUCATION

- A KU degree gives you the edge you need to make a difference in the world. You will receive a world class education.
- Degree programs
The University of Kansas offers more than 200 undergraduate programs (business, engineering, international studies, psychology and many more)
- University of Kansas' ranking in the 2023 edition of Best Colleges among National Universities is #121
- KU School of Business is ranked #41 amongst all public universities. Located in the Capital Federal Hall which is newly built in 2016!





KANSAS WOMEN'S GOLF

2023-24 SCHEDULE



UNM DICK McGUIRE INVITATIONAL - SEPT. 11-12



THE MOLLY INVITATIONAL - SEPT. 25-26



RON MOORE INTERCOLLEGIATE - OCT. 6-8



MERCEDES-BENZ COLLEGIATE CLASSIC - OCT. 15-17



MATCH IN THE DESERT - JAN. 22



UCF CHALLENGE - FEB. 4-6



WISCONSIN WESTBROOK INVITATIONAL - FEB. 25-26



FLORIDA STATE MATCH UP - MARCH 15-17



PING/ASU INVITATIONAL - MARCH 28-30



SMU/BAYLOR MATCH PLAY - APRIL 8-9



BIG 12 CHAMPIONSHIP - APRIL 18-20



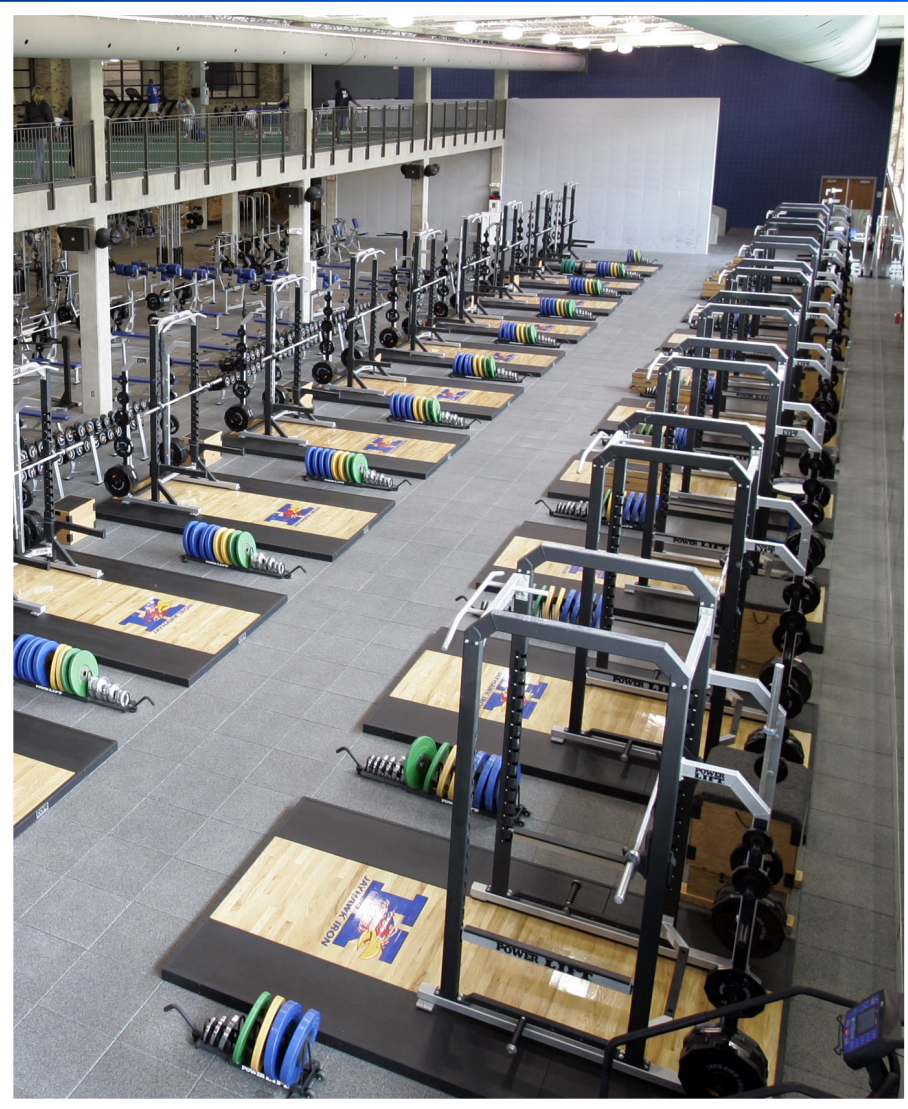
NCAA REGIONALS - MAY 6-8



NCAA CHAMPIONSHIP- MAY 17-22



KU ATHLETICS RESOURCES



Strength and Conditioning

At Kansas we use top notch technology to track each athletes athletic performance progress and help minimize injuries

- Sparta Force Plate System
- EliteForm
- DexaScans

Workouts are individualized and always supervised by a strength coach.



KU ATHLETICS RESOURCES

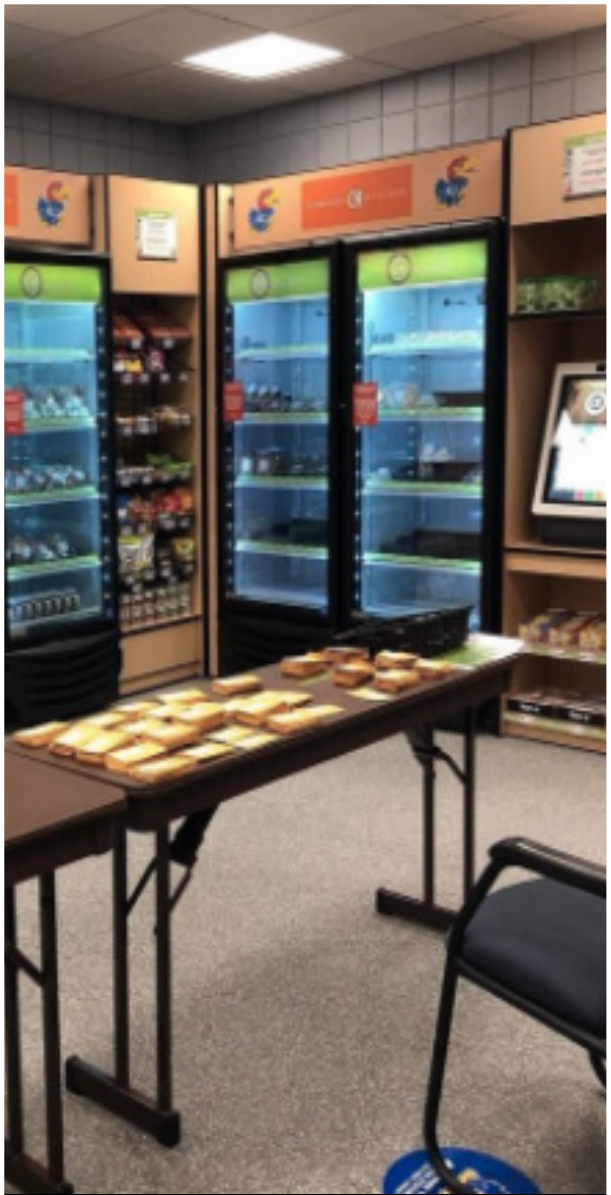
TrackMan and Foresight Sports Launch Monitor

- The Kansas Women's golf program uses a Foresight Sports Launch Monitor for team travel
- All athletes on team on team use Rapsodo Launch Monitor.
- We also have two Trackmans available to use at our facility including an indoor simulator
- Access to Boditrak Force plate system in our indoor teaching bay

Sports Psychology

- Vision 54 training, individual sessions, and work on mental skills throughout the season
- Full time counselor available on staff





KU ATHLETICS RESOURCES

Red Card

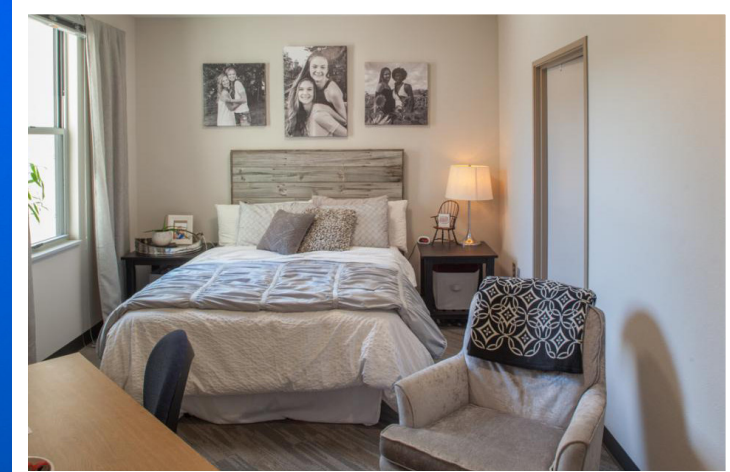
A flexible athlete fueling platform for all student athletes. \$26.50 a day for food

- A meal card incidental with student-athlete participation
- Access to over 10 off campus restaurants around Lawrence
- HyVee Grocery Store was just added to the red card, so you can purchase supplies to cook a meal at home
- Have access to dietician suggestions for all restaurants available on the red card on your app



STOUFFER PLACE APARTMENTS

At Stouffer Apartments Student-athletes have options of 2-bedroom or 4-bedroom apartments. In each apartment student-athletes have their own bedroom and bathroom, and share a living room, full kitchen, and washer-dryer within the apartment.



KU LEADS

- The University of Kansas has a well-established history and tradition of excellence and KU LEADS embodies the pursuit of excellence as the Kansas Athletics student-athlete development unit
- KU Leads' framework focuses on leadership training, community building opportunities, and professional development to enhance the student-athlete experience.
- Their goal is to support current student-athletes, connect past and present student-athletes, and educate student-athletes on the skills necessary to succeed at the University of Kansas and throughout their lives.



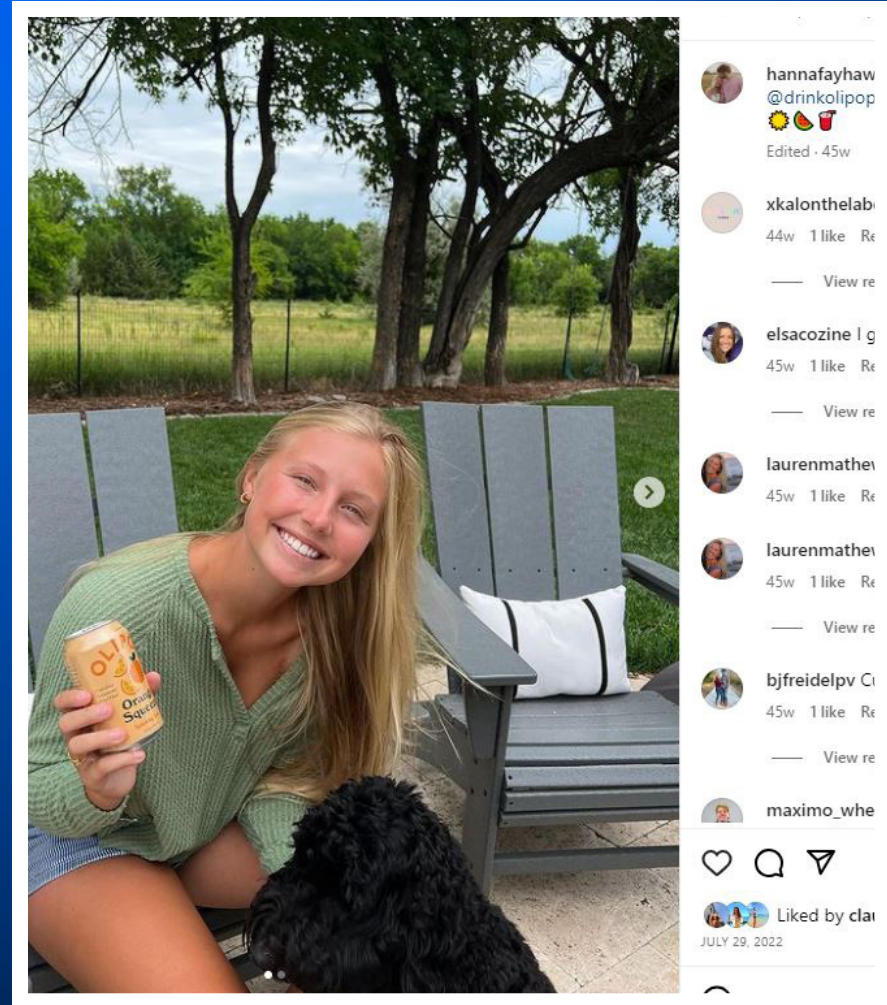
ROCK CHALK CHOICE AWARDS

- Every year we celebrate our student-athlete's accomplishments from the previous academic year with the Rock Chalk Choice Awards. The event includes a red carpet, guest speakers and plenty of awards given out!
- The team also earned a department-high 3.74 GPA this year.



NAME, IMAGE AND LIKENESS (NIL)

- Starting July 1, 2021, the NCAA approved policy which allows student-athletes to be compensated for their name, image, and likeness.
- In response, Kansas Athletics launched Jayhawks Ascend -KU's all encompassing NIL program.
- Partnerships in place with Altius Sports Partners, Opendorse and INFLCR.
- Launched Kansas NIL Marketplace, via Opendorse.
- Hired two full-time Directors of NIL on staff.
- Kansas Athletics hosts events and continued education sessions with student athletes on NIL compliance, brand building, content creation, financial literacy & more.



ADIDAS EQUIPMENT

Kansas owns one of the largest apparel deals in college athletics, a 14 year, \$196 million agreement that extends to 2031 and keeps alive a partnership with Adidas that first formed in 2005.

KU Athletes receive all equipment necessary to compete, practice, workout, and travel in style.



PLAYER DEVELOPMENT



LAUREN CLARK

74.3 → 72.91
1.39 STROKE AVERAGE IMPROVEMENT
IN 1 YEAR



JOHANNA EBNER

77.6 → 75.2
2.4 STROKE AVERAGE IMPROVEMENT
IN 2 YEARS



HANNA HAWKS

78 → 74.67
3.33 STROKE AVERAGE IMPROVEMENT
IN 4 YEARS



JORDAN ROTHMAN

75.9 → 70.67
5.23 STROKE AVERAGE IMPROVEMENT
IN 2 YEARS



LILY HIRST

74.03 → 72.67
1.36 STROKE AVERAGE IMPROVEMENT
IN 1 SEASON



30 YEARS OF COACHING



COACH KUHLE

WAC AND
SUMMIT
LEAGUE
COACH OF
THE YEAR

7 FORMER PLAYERS
COACHING AND
2 FORMER ASSISTANTS
COACHING IN
POWER FIVE SCHOOLS

**19TH YEAR
OF COACHING**

11 PLAYERS FROM
DENVER AND
2 FROM KU
THAT TURNED PRO



COACH BIDNE

**11TH YEAR
OF COACHING**

**BIG WEST
COACH OF
THE YEAR**



HEAD COACH LINDSAY KUHLE



Played collegiate golf at Tulane University

- All conference performer all four years
- Named Tulane Female Scholar-Athlete of the Year in 2005
- While in college qualified for three consecutive U.S. Women's Amateur Championships (2002-2004)
- Finished as the low amateur in the 2004 Colorado Women's Open
- While at Tulane Coach Kuhle recorded 14 top-10 finishes and a tournament win in 2002



HEAD COACH LINDSAY KUHLE

11 Years DI - Head Coaching Experience

Named head coach at the University of Kansas in 2021 after eight seasons at Denver as head coach

- Led KU to its second-ever NCAA regional selection (2023)
- Improved KU's ranking to 51st, its second-highest ranking all-time (2023)
- Commanded the lowest stroke average in program history (2023)

Assistant coach at the University of Georgia (2012-2013)

While at Denver (2013-2021)

- Helped Pioneers to seven conference championships
- Eight straight NCAA Regional Appearances
- Helped the Pioneers finish ranked 39th in the country in the 2020-2021 season
- Coached players Anna Zanusso to a ninth place finish at the NCAA National



ASSOCIATE HEAD COACH - STEPHEN BIDNE

9 Years DI - Head Coaching Experience

University of Northern Colorado (2013-2017)

University of Hawaii (2017-2022)

- 2017 Big West Conference Coach of the Year
- 2022 Big West Conference Team Champions
- Six Team Wins, Six Individual Wins
- Winningest Coach in UH program history

University of Kansas (2022-Present)

- Led KU to their second NCAA Regional appearance all-time, first since 2014.

Played collegiately at the University of Northern Colorado

- 2008 America Sky Conf. Newcomer of the Year
- 2010 America Sky Conf. Player of the Year
- Two Collegiate Individual Wins

Competed on PGA Tour Canada and various mini tours post college. Won 5 times, and had 13 other top-3 finishes.

CERTIFICATIONS

PGA Associate | AimPoint, TPI & BodiTrak Certified





KANSAS WOMEN'S GOLF TEAM RECORDS

LOW 18 HOLES

2023	Westbrook Invitational	279 (-9)
2017	Westbrook Invitational	280 (-8)
2015	Schooner Fall Classic	281 (-3)
2016	Texas Tech Invitational	282 (-6)
2022	Westbrook Invitational	283 (-5)

LOW 36 HOLES

2023	UCF Challenge	566 (-10)
2015	Schooner Fall Classic	566 (-2)
2018	Westbrook Invitational	576 (E)
2017	Westbrook Invitational	576 (E)
2016	Red Raider Invitational	577 (+1)

LOW 54 HOLES

2023	UCF Challenge	852 (-12)
2023	Westbrook Invitational	859 (-5)
2022	Westbrook Invitational	863 (-1)
2017	Westbrook Invitational	865 (+1)
2021	Ron Moore Invitational	867 (+3)

END OF THE SEASON GOLFSTAT RANKINGS

2014	38
2023	51
2015	60
2008	61
2006	62

NCAA APPEARANCES

REGIONAL	NATIONAL
2023	2014
2014	1990

TEAM TITLES

1978	Wichita State Invitational	332-329--661
1983	Kansas Mini-Invitational	--
1986	North-South Classic	331-312-163--806
1986	Kansas Invitational (Kansas A)	313-320--954
1989	Snowbird Intercollegiate	322-305--627
1989	Shocker Classic (Kansas A)	326-325-326--977
1990	Big Eight Championship	312-311-313--936
1991	Alabama Intercollegiate	309-314-318--941
1992	Azalea Seahawk Invitational	316-307-297--920
1992	Yale Intercollegiate	321-333--654
1994	Aztec Invitational	334-334-333--1012
1997	SW Missouri State Invitational	321-336-348--1005
1997	Sunflower Invitational	315-317-300--932
2000	Kansas vs. Coastal Carolina	317--317
2000	Kansas vs. College of Charleston	308--308
2004	Sunflower Invitational	311-319-316--946
2004	Mountain View Collegiate	297-297-290--884
2006	Sunflower Invitational	304-306-307--917
2007	Marilynn Smith Invitational	302-298--600
2009	Duramed Collegiate Invitational	294-295-294--883
2010	Marilynn Smith Invitational	313-290-300--903
2012	Rio Verde Collegiate Invitational	312-297-291--900
2012	Marilynn Smith Sunflower Invitational	303-298-305--906
2012	Price's "Give Em' Five" Intercollegiate	294-289-288--871
2013	Jayhawk-Cornhusker Challenge	317--317
2013	Marilynn Smith Sunflower Invitational	303-299-308--910
2013	Palmetto Intercollegiate	297-295-284--876
2017	Chip-N-Club Invitational	294-306-303--903

SCORING AVERAGE

Season	Rounds	Score
2022-23	30.5	295.41
2018-19	29	298.79
2020-21	21	299.29
2021-22	31	299.48
2013-14	39	299.69
2015-16	29	300.00
2019-20	20	300.00

BIG 12 TOURNAMENT

Season	Finish	Score
2004	4th	886
2009	5th	945
1997	7th	959
2016	7th	887
2017	7th	904
2019	7th	928
2022	7th	903
2004	8th	617
2013	8th	941
2015	8th	906
2023	8th	899



ON-SITE MENTAL HEALTH DOCTORS



Jason Kraman
LSCSW

**Student-Athlete Mental
Health Clinician**



Kristie Baumchen
LSCSW, LCAC

**Director of Mental
Health Services**



Dr. Emily Tyler

**Executive Director of
Mental Health Services**

TEAM NUTRITION



Natasha Hansen
MS, RD, CSSD, LD

Director of Performance
Nutrition

GOLF COURSE FACILITIES



THE JAYHAWK CLUB

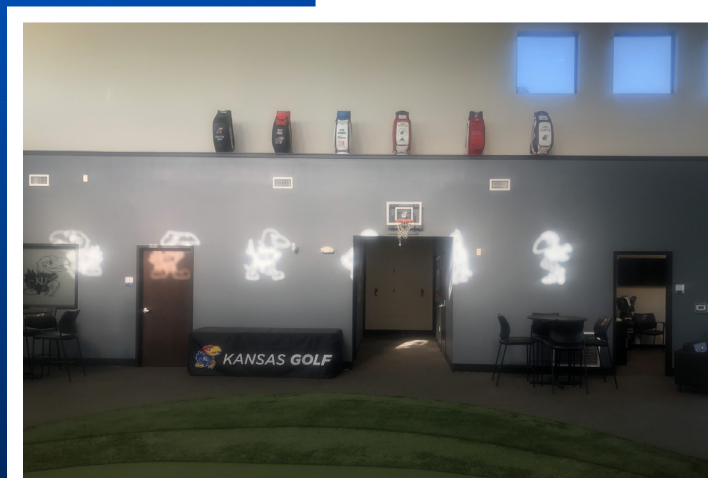
KANSAS PRACTICE FACILITY

Opened in 2018, the Kansas Golf Practice Facility is a state-of-the-art complex that provides the Jayhawks with the necessary tools to train year-round. The 30-acre complex surrounds the driving range at the Jayhawk Club. For on-course performance, the facility includes a large indoor short game area, seven hitting bays and a trackman simulator. Additionally, the private clubhouse for the men's and women's program also includes team-specific lounges, locker rooms and coaches offices.



THE JAYHAWK CLUB

KANSAS PRACTICE FACILITY



THE JAYHAWK CLUB

KANSAS PRACTICE FACILITY



THE JAYHAWK CLUB

KANSAS PRACTICE FACILITY



THE JAYHAWK CLUB - THE BABY JAY SHORT COURSE

The outdoor practice complex includes zoysia, bent and artificial turf teeing areas, allowing players to practice for upcoming tournaments from different wind directions and grasses. There are four greens including a large private putting green and The Baby Jay. The Baby Jay is an 18-hole short course played throughout three large short game areas. The “tees” stay the same every day, yet the hole locations change. The Baby Jay enables players to see a wide variety of shots and post a competitive score every day.



LAWRENCE COUNTRY CLUB

The Lawrence Country Club golf course was completely renovated and re-opened for play in September, 2006. The course was nominated by Golf Digest as one of the top five renovated country club courses in the Midwest Region. All 18 holes were redesigned and sculptured to create a magnificent and challenging course for all levels of play. LCC is one of only two country clubs in the state of Kansas with bent grass tee boxes, fairways, and greens. LCC hosted the Women's Big 12 Golf Championship in 2012.



IT'S A GREAT DAY TO BE A JAYHAWK!

