



BYU at Kansas

02/27/24 Allen Fieldhouse, Lawrence
2023-24 Men's Basketball

Game Time: 7:01 PM
Game Duration: 2:08
Attendance: 16,300

Officials: Gary Maxwell, Terry Oglesby, Jeb Hartness

BYU - 76

Record: 20-8 (8-7)

| NO. | Name | Min | FG | | | 3P | | | FT | | | Rebounds | | | Fouls | | TP | AS | TO | ST | Blocks | | +/- |
|---------------|------------------|---------|-------|-------|-------|----|----|-----|----|----|----|----------|---|---|-------|---|----|----|----|----|--------|--|-----|
| | | | M-A | M-A | M-A | OR | DR | TOT | PF | FD | BS | BA | | | | | | | | | | | |
| 0 | Noah Waterman | F 23:06 | 2-4 | 2-3 | 3-4 | 1 | 5 | 6 | 4 | 3 | 9 | 0 | 0 | 0 | 2 | 0 | 0 | 0 | 2 | 0 | -3 | | |
| 50 | Aly Khalifa | C 16:49 | 1-5 | 1-3 | 3-4 | 0 | 2 | 2 | 2 | 2 | 6 | 1 | 0 | 1 | 0 | 1 | 0 | 1 | 0 | 1 | -13 | | |
| 20 | Spencer Johnson | G 28:46 | 2-7 | 1-4 | 2-2 | 1 | 4 | 5 | 3 | 1 | 7 | 1 | 1 | 4 | 0 | 1 | 4 | 0 | 1 | 5 | | | |
| 21 | Trevin Knell | G 22:11 | 2-7 | 1-5 | 2-3 | 0 | 2 | 2 | 4 | 2 | 7 | 0 | 0 | 1 | 0 | 0 | 1 | 0 | 0 | -3 | | | |
| 30 | Dallin Hall | G 26:13 | 5-8 | 3-6 | 5-6 | 2 | 2 | 4 | 5 | 5 | 18 | 3 | 0 | 1 | 0 | 0 | 2 | 0 | 2 | | | | |
| 2 | Jaxson Robinson | 30:53 | 6-15 | 4-9 | 2-2 | 0 | 3 | 3 | 3 | 1 | 18 | 0 | 2 | 0 | 0 | 1 | 17 | 0 | 1 | | | | |
| 45 | Fousseyni Traore | 22:53 | 2-3 | 0-0 | 2-2 | 1 | 6 | 7 | 2 | 2 | 6 | 5 | 3 | 0 | 0 | 0 | 19 | 0 | 0 | | | | |
| 15 | Richie Saunders | 22:34 | 2-7 | 1-4 | 0-1 | 1 | 3 | 4 | 1 | 1 | 5 | 0 | 1 | 1 | 0 | 0 | 19 | 0 | 0 | | | | |
| 1 | Trey Stewart | 06:36 | 0-0 | 0-0 | 0-0 | 0 | 2 | 2 | 0 | 0 | 0 | 1 | 0 | 0 | 0 | 0 | -3 | 0 | 0 | | | | |
| Team | | | | | | 0 | 2 | 2 | | | 0 | | | 0 | | | | | | | | | |
| Totals | | | 22-56 | 13-34 | 19-24 | 6 | 31 | 37 | 25 | 17 | 76 | 11 | 7 | 8 | 2 | 3 | 8 | | | | | | |

| Shooting By Period | | |
|--------------------|-------|-------|
| 1st FG% | 9-30 | 30.0% |
| 3PT% | 6-19 | 31.6% |
| FT% | 5-7 | 71.4% |
| 2nd FG% | 13-26 | 50.0% |
| 3PT% | 7-15 | 46.7% |
| FT% | 14-17 | 82.4% |
| GM FG% | 22-56 | 39.3% |
| 3PT% | 13-34 | 38.2% |
| FT% | 19-24 | 79.2% |

Dead Ball Rebounds: 3, 0

Technical Fouls: Knell 2nd 17:20 Coach 2nd 7:50

Kansas - 68

Record: 21-7 (9-6)

| NO. | Name | Min | FG | | | 3P | | | FT | | | Rebounds | | | Fouls | | TP | AS | TO | ST | Blocks | | +/- |
|---------------|--------------------|---------|-------|------|-------|----|----|-----|----|----|----|----------|----|---|-------|---|----|----|----|----|--------|---|-----|
| | | | M-A | M-A | M-A | OR | DR | TOT | PF | FD | BS | BA | | | | | | | | | | | |
| 24 | KJ Adams, Jr. | F 33:47 | 5-13 | 0-0 | 1-2 | 2 | 3 | 5 | 4 | 4 | 11 | 2 | 1 | 2 | 2 | 1 | -9 | 2 | 1 | 2 | 2 | 1 | -9 |
| 1 | Hunter Dickinson | C 30:24 | 5-10 | 1-1 | 6-15 | 4 | 7 | 11 | 3 | 9 | 17 | 1 | 2 | 0 | 1 | 0 | -8 | 1 | 2 | 0 | 1 | 0 | -8 |
| 3 | Dajuan Harris Jr. | G 34:30 | 4-9 | 0-2 | 4-6 | 1 | 1 | 2 | 2 | 2 | 12 | 6 | 4 | 1 | 0 | 0 | -4 | 6 | 4 | 1 | 0 | 0 | -4 |
| 10 | Johnny Furphy | G 30:48 | 4-12 | 0-5 | 2-2 | 1 | 8 | 9 | 4 | 3 | 10 | 2 | 0 | 1 | 0 | 1 | -5 | 2 | 0 | 1 | 0 | 1 | -5 |
| 25 | Nicolas Timberlake | G 32:34 | 1-9 | 1-6 | 6-6 | 0 | 5 | 5 | 1 | 3 | 9 | 1 | 1 | 1 | 0 | 0 | -8 | 1 | 1 | 1 | 0 | 0 | -8 |
| 11 | Jamari McDowell | 13:20 | 1-1 | 1-1 | 0-0 | 0 | 1 | 1 | 1 | 0 | 3 | 1 | 1 | 0 | 0 | 0 | -9 | 1 | 1 | 0 | 0 | 0 | -9 |
| 13 | Elmarko Jackson | 13:28 | 1-3 | 0-0 | 0-0 | 0 | 1 | 1 | 1 | 1 | 2 | 1 | 1 | 0 | 0 | 2 | 2 | 1 | 1 | 0 | 0 | 2 | |
| 23 | Parker Braun | 10:53 | 2-2 | 0-0 | 0-0 | 0 | 2 | 2 | 2 | 1 | 4 | 0 | 0 | 0 | 0 | 1 | 1 | 0 | 0 | 0 | 0 | 1 | |
| 14 | Patrick Cassidy | 00:17 | 0-0 | 0-0 | 0-0 | 0 | 0 | 0 | 0 | 0 | 0 | 0 | 0 | 0 | 0 | 0 | 0 | 0 | 0 | 0 | 0 | 0 | |
| Team | | | | | | 2 | 2 | 4 | | | 0 | | | 1 | | | | | | | | | |
| Totals | | | 23-59 | 3-15 | 19-31 | 10 | 30 | 40 | 18 | 23 | 68 | 14 | 11 | 5 | 3 | 2 | -8 | | | | | | |

| Shooting By Period | | |
|--------------------|-------|-------|
| 1st FG% | 15-30 | 50.0% |
| 3PT% | 1-5 | 20.0% |
| FT% | 4-7 | 57.1% |
| 2nd FG% | 8-29 | 27.6% |
| 3PT% | 2-10 | 20.0% |
| FT% | 15-24 | 62.5% |
| GM FG% | 23-59 | 39.0% |
| 3PT% | 3-15 | 20.0% |
| FT% | 19-31 | 61.3% |

Dead Ball Rebounds: 7, 0

Technical Fouls: Dickinson 2nd 17:21

| | BYU | KU |
|------------------|--------------------------|----------------------------|
| Biggest lead | 8 (2 nd 0:23) | 12 (2 nd 18:28) |
| Best Scoring Run | 8 (2 nd 0:23) | 8 (1 st 0:57) |
| Lead Changes | 3 | |
| Times Tied | 3 | |
| Time with Lead | 03:17 | 35:30 |

| Points from | BYU | KU |
|---------------|-----|----|
| Turnovers | 8 | 7 |
| Paint | 16 | 36 |
| Second Chance | 9 | 2 |
| Fast Breaks | 6 | 9 |
| Bench | 29 | 9 |

| | Period by Period Scoring | | |
|-----|--------------------------|-----|-----|
| | 1st | 2nd | TOT |
| BYU | 29 | 47 | 76 |
| KU | 35 | 33 | 68 |



Period 1

Quarter Starters:

| | | | | | |
|------------|---------------|----------------|-------------|-----------------|-----------------|
| KU | 1 Dickinson H | 3 Harris Jr. D | 10 Furphy J | 24 Adams, Jr. K | 25 Timberlake N |
| BYU | 0 Waterman N | 20 Johnson S | 21 Knell T | 30 Hall D | 50 Khalifa A |

| Game Time | KU | Score | Diff | BYU |
|-----------|---|------------|----------|---|
| 20:00 | 1 DICKINSON H jumpball won | | | 0 WATERMAN N jumpball lost |
| 19:30 | 3 HARRIS JR. D 2pt FG in the paint, layup made (2) | 2-0 | 2 | |
| 19:08 | | | | 21 KNELL T 3pt FG , jump shot missed |
| 19:05 | 10 FURPHY J defensive rebound (1) | | | |
| 18:53 | 1 DICKINSON H 2pt FG outside the paint, jump shot missed | | | |
| 18:50 | | | | 21 KNELL T defensive rebound (1) |
| 18:41 | 10 FURPHY J foul shooting (1 - 1) | | | 50 KHALIFA A foul drawn (1) |
| 18:41 | | | | 50 KHALIFA A free throw 1 - 2 missed |
| 18:41 | | | | offensive dead ball rebound (1) |
| 18:41 | | 2-1 | 1 | 50 KHALIFA A free throw 2 - 2 made (1) |
| 18:30 | 24 ADAMS, JR. K 2pt FG in the paint, jump shot made (2) | 4-1 | 3 | |
| 18:30 | 3 HARRIS JR. D assist (1) | | | |
| 18:30 | 24 ADAMS, JR. K foul drawn (1) | | | 30 HALL D foul shooting (1 - 1) |
| 18:30 | 24 ADAMS, JR. K free throw 1 - 1 made (3) | 5-1 | 4 | |
| 18:22 | 3 HARRIS JR. D foul personal (1 - 2) | | | 30 HALL D foul drawn (1) |
| 18:07 | | 5-3 | 2 | 30 HALL D 2pt FG in the paint, layup made (2) |
| 17:37 | 25 TIMBERLAKE N 3pt FG , jump shot missed | | | |
| 17:34 | | | | 20 JOHNSON S defensive rebound (1) |
| 17:24 | | | | 21 KNELL T 3pt FG , jump shot missed |
| 17:22 | 10 FURPHY J defensive rebound (2) | | | |
| 17:14 | 1 DICKINSON H 2pt FG in the paint, hook shot made (2) | 7-3 | 4 | |
| 17:14 | 10 FURPHY J assist (1) | | | |
| 17:14 | 1 DICKINSON H foul drawn (1) | | | 50 KHALIFA A foul shooting (1 - 2) |
| 17:14 | 1 DICKINSON H free throw 1 - 1 made (3) | 8-3 | 5 | |
| 17:02 | | | | 20 JOHNSON S 2pt FG in the paint, layup blocked |
| 17:02 | 24 ADAMS, JR. K block (1) | | | |
| 16:58 | 25 TIMBERLAKE N defensive rebound (1) | | | |
| 16:41 | 24 ADAMS, JR. K 2pt FG in the paint, layup missed | | | |
| 16:37 | 1 DICKINSON H offensive rebound (1) | | | |
| 16:37 | 1 DICKINSON H 2pt FG second chance in the paint, layup missed | | | |
| 16:37 | | | | 50 KHALIFA A defensive rebound (1) |
| 16:31 | | | | 20 JOHNSON S 2pt FG outside the paint, step back jump shot missed |
| 16:28 | defensive rebound (5) | | | |
| 16:02 | 25 TIMBERLAKE N 3pt FG , jump shot missed | | | |
| 15:59 | 10 FURPHY J offensive rebound (3) | | | |
| 15:57 | 3 HARRIS JR. D 3pt FG second chance, jump shot missed | | | |
| 15:56 | 1 DICKINSON H offensive rebound (2) | | | |
| 15:56 | 1 DICKINSON H foul drawn (2) | | | 0 WATERMAN N foul personal (1 - 3) |
| 15:56 | | | | Timeout media |
| 15:56 | | | | 30 HALL D substitution out |
| 15:56 | | | | 50 KHALIFA A substitution out |
| 15:56 | | | | 2 ROBINSON J substitution in |



BYU at Kansas

02/27/24 Allen Fieldhouse, Lawrence
2023-24 Men's Basketball

Game Time: 7:01 PM
Game Duration: 2:08
Attendance: 16,300

Officials: Gary Maxwell, Terry Oglesby, Jeb Hartness

| Game Time | KU | Score | Diff | BYU |
|-----------|---|--------------|----------|--|
| 15:56 | | | | 45 TRAORE F substitution in |
| 15:56 | | | | 20 JOHNSON S substitution out |
| 15:56 | | | | 30 HALL D substitution in |
| 15:43 | 3 HARRIS JR. D turnover bad pass (1) | | | 21 KNELL T steal (1) |
| 15:38 | | | | 2 ROBINSON J turnover lost ball (1) |
| 15:21 | 1 DICKINSON H foul drawn (3) | | | 0 WATERMAN N foul shooting (2 - 4) |
| 15:21 | 1 DICKINSON H free throw 1 - 2 missed | | | |
| 15:21 | offensive dead ball rebound (1) | | | |
| 15:21 | | | | 0 WATERMAN N substitution out |
| 15:21 | | | | 15 SAUNDERS R substitution in |
| 15:21 | 1 DICKINSON H free throw 2 - 2 missed | | | |
| 15:19 | | | | 15 SAUNDERS R defensive rebound (1) |
| 15:07 | | 8-6 | 2 | 30 HALL D 3pt FG , jump shot made (5) |
| 15:07 | | | | 45 TRAORE F assist (1) |
| 14:44 | 10 FURPHY J 3pt FG , jump shot missed | | | |
| 14:42 | | | | 15 SAUNDERS R defensive rebound (2) |
| 14:33 | | | | 15 SAUNDERS R 3pt FG , jump shot missed |
| 14:30 | 10 FURPHY J defensive rebound (4) | | | |
| 14:27 | 1 DICKINSON H 2pt FG fast break in the paint, dunk, made (5) | 10-6 | 4 | |
| 14:27 | 10 FURPHY J assist (2) | | | |
| 14:05 | 24 ADAMS, JR. K steal (1) | | | 45 TRAORE F turnover lost ball (1) |
| 13:54 | 24 ADAMS, JR. K foul drawn (2) | | | 21 KNELL T foul personal (1 - 5) |
| 13:54 | 1 DICKINSON H substitution out | | | |
| 13:54 | 3 HARRIS JR. D substitution out | | | |
| 13:54 | 25 TIMBERLAKE N substitution out | | | |
| 13:54 | 11 MCDOWELL J substitution in | | | |
| 13:54 | 13 JACKSON E substitution in | | | |
| 13:54 | 23 BRAUN P substitution in | | | |
| 13:34 | 13 JACKSON E 2pt FG from turnover outside the paint, pull up jump shot made (2) | 12-6 | 6 | |
| 13:12 | | | | 30 HALL D 3pt FG , jump shot missed |
| 13:10 | | | | 45 TRAORE F offensive rebound (1) |
| 13:10 | 11 MCDOWELL J foul personal (1 - 3) | | | 21 KNELL T foul drawn (1) |
| 13:06 | | 12-8 | 4 | 21 KNELL T 2pt FG second chance in the paint, layup made (2) |
| 12:54 | 10 FURPHY J 2pt FG in the paint, driving layup made (2) | 14-8 | 6 | |
| 12:54 | 24 ADAMS, JR. K assist (1) | | | |
| 12:41 | 24 ADAMS, JR. K foul shooting (1 - 4) | | | 21 KNELL T foul drawn (2) |
| 12:41 | | | | 21 KNELL T free throw 1 - 3 missed |
| 12:41 | | | | offensive dead ball rebound (2) |
| 12:41 | | 14-9 | 5 | 21 KNELL T free throw 2 - 3 made (3) |
| 12:41 | | | | 30 HALL D substitution out |
| 12:41 | | | | 1 STEWART T substitution in |
| 12:41 | | 14-10 | 4 | 21 KNELL T free throw 3 - 3 made (4) |
| 12:17 | 24 ADAMS, JR. K 2pt FG in the paint, jump shot missed | | | |
| 12:15 | | | | 45 TRAORE F defensive rebound (2) |
| 12:06 | | 14-13 | 1 | 2 ROBINSON J 3pt FG , jump shot made (3) |
| 12:06 | | | | 45 TRAORE F assist (2) |
| 11:52 | 23 BRAUN P 2pt FG in the paint, layup made (2) | 16-13 | 3 | |
| 11:52 | 13 JACKSON E assist (1) | | | |



BYU at Kansas

02/27/24 Allen Fieldhouse, Lawrence
2023-24 Men's Basketball

Game Time: 7:01 PM
Game Duration: 2:08
Attendance: 16,300

Officials: Gary Maxwell, Terry Oglesby, Jeb Hartness

| Game Time | KU | Score | Diff | BYU |
|-----------|--|--------------|----------|---|
| 11:33 | 10 FURPHY J steal (1) | | | 15 SAUNDERS R turnover lost ball (1) |
| 11:32 | 13 JACKSON E foul drawn (1) | | | 21 KNELL T foul personal (2 - 6) |
| 11:32 | Timeout media | | | |
| 11:32 | 10 FURPHY J substitution out | | | |
| 11:32 | 23 BRAUN P substitution out | | | |
| 11:32 | 24 ADAMS, JR. K substitution out | | | |
| 11:32 | 1 DICKINSON H substitution in | | | |
| 11:32 | 3 HARRIS JR. D substitution in | | | |
| 11:32 | 25 TIMBERLAKE N substitution in | | | |
| 11:32 | | | | 45 TRAORE F substitution out |
| 11:32 | | | | 50 KHALIFA A substitution in |
| 11:31 | | | | 21 KNELL T substitution out |
| 11:31 | | | | 20 JOHNSON S substitution in |
| 11:26 | 3 HARRIS JR. D 2pt FG from turnover in the paint, hook shot missed | | | |
| 11:23 | | | | 2 ROBINSON J defensive rebound (1) |
| 10:58 | | | | 15 SAUNDERS R 2pt FG in the paint, hook shot missed |
| 10:55 | 25 TIMBERLAKE N defensive rebound (2) | | | |
| 10:46 | 13 JACKSON E 2pt FG in the paint, layup missed | | | |
| 10:43 | | | | 1 STEWART T defensive rebound (1) |
| 10:26 | | | | 15 SAUNDERS R 2pt FG in the paint, step back jump shot missed |
| 10:23 | 1 DICKINSON H defensive rebound (3) | | | |
| 10:12 | 11 MCDOWELL J 3pt FG , jump shot made (3) | 19-13 | 6 | |
| 09:56 | | 19-16 | 3 | 50 KHALIFA A 3pt FG , jump shot made (4) |
| 09:56 | | | | 20 JOHNSON S assist (1) |
| 09:40 | 25 TIMBERLAKE N 2pt FG in the paint, layup missed | | | |
| 09:38 | | | | 20 JOHNSON S defensive rebound (2) |
| 09:31 | | | | 2 ROBINSON J 3pt FG , jump shot missed |
| 09:28 | 1 DICKINSON H defensive rebound (4) | | | |
| 09:16 | 1 DICKINSON H 2pt FG outside the paint, jump shot missed | | | |
| 09:12 | | | | 1 STEWART T defensive rebound (2) |
| 09:01 | | | | 2 ROBINSON J 2pt FG outside the paint, jump shot missed |
| 08:58 | 13 JACKSON E defensive rebound (1) | | | |
| 08:51 | 11 MCDOWELL J substitution out | | | |
| 08:51 | 13 JACKSON E substitution out | | | |
| 08:51 | 10 FURPHY J substitution in | | | |
| 08:51 | 24 ADAMS, JR. K substitution in | | | |
| 08:51 | | | | 1 STEWART T substitution out |
| 08:51 | | | | 15 SAUNDERS R substitution out |
| 08:51 | | | | 20 JOHNSON S substitution out |
| 08:51 | | | | 0 WATERMAN N substitution in |
| 08:51 | | | | 21 KNELL T substitution in |
| 08:51 | | | | 30 HALL D substitution in |
| 08:36 | 10 FURPHY J 2pt FG in the paint, layup made (4) | 21-16 | 5 | |
| 08:16 | 10 FURPHY J foul shooting (2 - 5) | | | 0 WATERMAN N foul drawn (1) |
| 08:16 | | 21-17 | 4 | 0 WATERMAN N free throw 1 - 2 made (1) |
| 08:16 | 10 FURPHY J substitution out | | | |
| 08:16 | 11 MCDOWELL J substitution in | | | |
| 08:16 | | 21-18 | 3 | 0 WATERMAN N free throw 2 - 2 made (2) |



BYU at Kansas

02/27/24 Allen Fieldhouse, Lawrence
2023-24 Men's Basketball

Game Time: 7:01 PM
Game Duration: 2:08
Attendance: 16,300

Officials: Gary Maxwell, Terry Oglesby, Jeb Hartness

| Game Time | KU | Score | Diff | BYU |
|-----------|---|--------------|----------|---|
| 08:02 | 24 ADAMS, JR. K 2pt FG in the paint, jump shot made (5) | 23-18 | 5 | |
| 08:02 | 3 HARRIS JR. D assist (2) | | | |
| 08:02 | 24 ADAMS, JR. K foul drawn (3) | | | 2 ROBINSON J foul shooting (1 - 7) |
| 08:00 | 24 ADAMS, JR. K free throw 1 - 1 missed | | | |
| 07:59 | offensive rebound (13) | | | |
| 07:59 | Timeout media | | | |
| 07:59 | | | | 0 WATERMAN N substitution out |
| 07:59 | | | | 21 KNELL T substitution out |
| 07:59 | | | | 50 KHALIFA A substitution out |
| 07:59 | | | | 15 SAUNDERS R substitution in |
| 07:59 | | | | 20 JOHNSON S substitution in |
| 07:59 | | | | 45 TRAORE F substitution in |
| 07:54 | 3 HARRIS JR. D turnover lost ball (2) | | | 20 JOHNSON S steal (1) |
| 07:51 | 25 TIMBERLAKE N steal (1) | | | 20 JOHNSON S turnover lost ball (1) |
| 07:39 | 24 ADAMS, JR. K 2pt FG from turnover in the paint, layup made (7) | 25-18 | 7 | |
| 07:39 | 11 MCDOWELL J assist (1) | | | |
| 07:27 | | 25-21 | 4 | 20 JOHNSON S 3pt FG , step back jump shot made (3) |
| 07:10 | jump ball situation | | | |
| 07:10 | 24 ADAMS, JR. K turnover lost ball (1) | | | 15 SAUNDERS R steal (1) |
| 06:46 | | 25-24 | 1 | 15 SAUNDERS R 3pt FG from turnover, jump shot made (3) |
| 06:46 | | | | 30 HALL D assist (1) |
| 06:26 | 24 ADAMS, JR. K 2pt FG in the paint, pull up jump shot missed | | | |
| 06:23 | | | | 20 JOHNSON S defensive rebound (3) |
| 06:14 | | | | 15 SAUNDERS R 3pt FG , jump shot missed |
| 06:11 | 1 DICKINSON H defensive rebound (5) | | | |
| 06:11 | 1 DICKINSON H substitution out | | | |
| 06:11 | 11 MCDOWELL J substitution out | | | |
| 06:11 | 25 TIMBERLAKE N substitution out | | | |
| 06:11 | 10 FURPHY J substitution in | | | |
| 06:11 | 13 JACKSON E substitution in | | | |
| 06:11 | 23 BRAUN P substitution in | | | |
| 05:55 | 3 HARRIS JR. D turnover bad pass (3) | | | 20 JOHNSON S steal (2) |
| 05:46 | | | | 15 SAUNDERS R 3pt FG from turnover, jump shot missed |
| 05:44 | 24 ADAMS, JR. K defensive rebound (1) | | | |
| 05:39 | 10 FURPHY J 2pt FG fast break in the paint, dunk, made (6) | 27-24 | 3 | |
| 05:39 | 3 HARRIS JR. D assist (3) | | | |
| 05:23 | | | | 45 TRAORE F 2pt FG in the paint, hook shot missed |
| 05:20 | | | | 20 JOHNSON S offensive rebound (4) |
| 05:18 | | | | 30 HALL D 3pt FG second chance, jump shot missed |
| 05:15 | | | | 15 SAUNDERS R offensive rebound (3) |
| 05:13 | | 27-26 | 1 | 15 SAUNDERS R 2pt FG second chance in the paint, layup made (5) |
| 04:53 | 13 JACKSON E 2pt FG in the paint, jump shot missed | | | |
| 04:50 | | | | 45 TRAORE F defensive rebound (3) |
| 04:29 | | | | 30 HALL D 3pt FG , jump shot missed |
| 04:27 | 10 FURPHY J defensive rebound (5) | | | |
| 04:27 | 10 FURPHY J foul drawn (1) | | | 30 HALL D foul personal (2 - 8) |
| 04:27 | | | | 30 HALL D substitution out |
| 04:27 | | | | 1 STEWART T substitution in |



BYU at Kansas

02/27/24 Allen Fieldhouse, Lawrence
2023-24 Men's Basketball

Game Time: 7:01 PM
Game Duration: 2:08
Attendance: 16,300

Officials: Gary Maxwell, Terry Oglesby, Jeb Hartness

| Game Time | KU | Score | Diff | BYU |
|-----------|--|--------------|----------|---|
| 04:27 | | | | 15 SAUNDERS R substitution out |
| 04:27 | | | | 0 WATERMAN N substitution in |
| 04:27 | | | | 45 TRAORE F substitution out |
| 04:27 | | | | 50 KHALIFA A substitution in |
| 04:27 | 10 FURPHY J 1&1 free throw 1 made (7) | 28-26 | 2 | |
| 04:27 | 10 FURPHY J 1&1 free throw 2 made (8) | 29-26 | 3 | |
| 04:15 | | | | 20 JOHNSON S 3pt FG , jump shot missed |
| 04:14 | defensive rebound (17) | | | |
| 03:59 | 24 ADAMS, JR. K 2pt FG in the paint, driving layup made (9) | 31-26 | 5 | |
| 03:59 | 3 HARRIS JR. D assist (4) | | | |
| 03:49 | | | | 2 ROBINSON J 2pt FG in the paint, layup blocked |
| 03:49 | 24 ADAMS, JR. K block (2) | | | |
| 03:45 | 23 BRAUN P defensive rebound (1) | | | |
| 03:35 | 10 FURPHY J 2pt FG in the paint, floating jump shot blocked | | | |
| 03:35 | | | | 0 WATERMAN N block (1) |
| 03:30 | | | | 50 KHALIFA A defensive rebound (2) |
| 03:11 | | | | 2 ROBINSON J 3pt FG , jump shot missed |
| 03:08 | 23 BRAUN P defensive rebound (2) | | | |
| 03:00 | 3 HARRIS JR. D 2pt FG outside the paint, floating jump shot made (4) | 33-26 | 7 | |
| 02:52 | | | | Timeout 30 Sec |
| 02:52 | Timeout media | | | |
| 02:52 | 3 HARRIS JR. D substitution out | | | |
| 02:52 | 10 FURPHY J substitution out | | | |
| 02:52 | 24 ADAMS, JR. K substitution out | | | |
| 02:52 | 1 DICKINSON H substitution in | | | |
| 02:52 | 11 MCDOWELL J substitution in | | | |
| 02:52 | 25 TIMBERLAKE N substitution in | | | |
| 02:52 | | | | 0 WATERMAN N substitution out |
| 02:52 | | | | 1 STEWART T substitution out |
| 02:52 | | | | 2 ROBINSON J substitution out |
| 02:52 | | | | 15 SAUNDERS R substitution in |
| 02:52 | | | | 21 KNELL T substitution in |
| 02:52 | | | | 30 HALL D substitution in |
| 02:37 | | | | 20 JOHNSON S 3pt FG , jump shot missed |
| 02:34 | 1 DICKINSON H defensive rebound (6) | | | |
| 02:15 | 11 MCDOWELL J turnover bad pass (1) | | | |
| 01:51 | | | | 50 KHALIFA A 3pt FG from turnover, jump shot missed |
| 01:49 | | | | 30 HALL D offensive rebound (1) |
| 01:29 | | | | 50 KHALIFA A 2pt FG from turnover second chance outside the paint, step back jump shot missed |
| 01:25 | 11 MCDOWELL J defensive rebound (1) | | | |
| 01:11 | Timeout 30 Sec | | | |
| 01:11 | 13 JACKSON E substitution out | | | |
| 01:11 | 23 BRAUN P substitution out | | | |
| 01:11 | 3 HARRIS JR. D substitution in | | | |
| 01:11 | 24 ADAMS, JR. K substitution in | | | |
| 01:11 | | | | 21 KNELL T substitution out |
| 01:11 | | | | 30 HALL D substitution out |
| 01:11 | | | | 50 KHALIFA A substitution out |



Official Basketball Play by Play - First Half

BYU at Kansas

02/27/24 Allen Fieldhouse, Lawrence
2023-24 Men's Basketball

Game Time: 7:01 PM

Game Duration: 2:08

Attendance: 16,300

Officials: Gary Maxwell, Terry Oglesby, Jeb Hartness

| Game Time | KU | Score | Diff | BYU |
|----------------------|---|--------------|----------|--|
| 01:11 | | | | 1 STEWART T substitution in |
| 01:11 | | | | 2 ROBINSON J substitution in |
| 01:11 | | | | 45 TRAORE F substitution in |
| 00:57 | 1 DICKINSON H 2pt FG in the paint, hook shot made (7) | 35-26 | 9 | |
| 00:35 | | 35-29 | 6 | 2 ROBINSON J 3pt FG , jump shot made (6) |
| 00:35 | | | | 1 STEWART T assist (1) |
| 00:00 | 3 HARRIS JR. D turnover bad pass (4) | | | 20 JOHNSON S steal (3) |
| END OF PERIOD | | | | |
| KU 35-29 BYU | | | | |



BYU at Kansas

02/27/24 Allen Fieldhouse, Lawrence
2023-24 Men's Basketball

Game Time: 7:01 PM
Game Duration: 2:08
Attendance: 16,300

Officials: Gary Maxwell, Terry Oglesby, Jeb Hartness

BYU - 29

| NO. | Name | F/C | Min | FG | 3P | FT | Rebounds | | | Fouls | | TP | AS | TO | ST | Blocks | | +/- | |
|---------------|------------------|-----|-------|------|------|-----|----------|----|-----|-------|----|----|----|----|----|--------|----|-----|----|
| | | | | M-A | M-A | M-A | OR | DR | TOT | PF | FD | | | | | BS | BA | | |
| 0 | Noah Waterman | F | 07:06 | 0-0 | 0-0 | 2-2 | 0 | 0 | 0 | 2 | 1 | 2 | 0 | 0 | 0 | 1 | 0 | -13 | |
| 50 | Aly Khalifa | C | 10:53 | 1-3 | 1-2 | 1-2 | 0 | 2 | 2 | 1 | 1 | 4 | 0 | 0 | 0 | 0 | 0 | -13 | |
| 20 | Spencer Johnson | G | 14:43 | 1-5 | 1-3 | 0-0 | 1 | 3 | 4 | 0 | 0 | 3 | 1 | 1 | 3 | 0 | 1 | -6 | |
| 21 | Trevin Knell | G | 11:02 | 1-3 | 0-2 | 2-3 | 0 | 1 | 1 | 2 | 2 | 4 | 0 | 0 | 1 | 0 | 0 | -5 | |
| 30 | Dallin Hall | G | 13:24 | 2-5 | 1-4 | 0-0 | 1 | 0 | 1 | 2 | 1 | 5 | 1 | 0 | 0 | 0 | 0 | -3 | |
| 2 | Jaxson Robinson | | 14:15 | 2-6 | 2-4 | 0-0 | 0 | 1 | 1 | 1 | 0 | 6 | 0 | 1 | 0 | 0 | 1 | -1 | |
| 45 | Fousseyni Traore | | 09:07 | 0-1 | 0-0 | 0-0 | 1 | 2 | 3 | 0 | 0 | 0 | 2 | 1 | 0 | 0 | 0 | 7 | |
| 15 | Richie Saunders | | 12:54 | 2-7 | 1-4 | 0-0 | 1 | 2 | 3 | 0 | 0 | 5 | 0 | 1 | 1 | 0 | 0 | 7 | |
| 1 | Trey Stewart | | 06:36 | 0-0 | 0-0 | 0-0 | 0 | 2 | 2 | 0 | 0 | 0 | 1 | 0 | 0 | 0 | 0 | -3 | |
| Team | | | | | | | 0 | 0 | 0 | | | 0 | | | 0 | | | | |
| Totals | | | | 9-30 | 6-19 | 5-7 | 4 | 13 | 17 | 8 | 5 | 29 | 5 | 4 | 5 | 1 | 2 | | -6 |

| Shooting By Period | | |
|--------------------|------|-------|
| 1st FG% | 9-30 | 30.0% |
| 3PT% | 6-19 | 31.6% |
| FT% | 5-7 | 71.4% |
| GM FG% | 9-30 | 30.0% |
| 3PT% | 6-19 | 31.6% |
| FT% | 5-7 | 71.4% |

Dead Ball Rebounds: 2, 0

Technical Fouls::NONE

Kansas - 35

| NO. | Name | F/C | Min | FG | 3P | FT | Rebounds | | | Fouls | | TP | AS | TO | ST | Blocks | | +/- | |
|---------------|--------------------|-----|-------|-------|-----|-----|----------|----|-----|-------|----|----|----|----|----|--------|----|-----|---|
| | | | | M-A | M-A | M-A | OR | DR | TOT | PF | FD | | | | | BS | BA | | |
| 24 | KJ Adams, Jr. | F | 15:38 | 4-7 | 0-0 | 1-2 | 0 | 1 | 1 | 1 | 3 | 9 | 1 | 1 | 1 | 2 | 0 | 6 | |
| 1 | Hunter Dickinson | C | 14:19 | 3-6 | 0-0 | 1-3 | 2 | 4 | 6 | 0 | 3 | 7 | 0 | 0 | 0 | 0 | 0 | 1 | |
| 3 | Dajuan Harris Jr. | G | 15:57 | 2-4 | 0-1 | 0-0 | 0 | 0 | 0 | 1 | 0 | 4 | 4 | 4 | 0 | 0 | 0 | 7 | |
| 10 | Johnny Furphy | G | 12:22 | 3-5 | 0-1 | 2-2 | 1 | 4 | 5 | 2 | 1 | 8 | 2 | 0 | 1 | 0 | 1 | 10 | |
| 25 | Nicolas Timberlake | G | 14:19 | 0-3 | 0-2 | 0-0 | 0 | 2 | 2 | 0 | 0 | 0 | 0 | 0 | 1 | 0 | 0 | 1 | |
| 11 | Jamari McDowell | | 10:00 | 1-1 | 1-1 | 0-0 | 0 | 1 | 1 | 1 | 0 | 3 | 1 | 1 | 0 | 0 | 0 | -5 | |
| 13 | Elmarko Jackson | | 10:03 | 1-3 | 0-0 | 0-0 | 0 | 1 | 1 | 0 | 1 | 2 | 1 | 0 | 0 | 0 | 0 | 5 | |
| 23 | Parker Braun | | 07:22 | 1-1 | 0-0 | 0-0 | 0 | 2 | 2 | 0 | 0 | 2 | 0 | 0 | 0 | 0 | 0 | 5 | |
| Team | | | | | | | 1 | 2 | 3 | | | 0 | | | 0 | | | | |
| Totals | | | | 15-30 | 1-5 | 4-7 | 4 | 17 | 21 | 5 | 8 | 35 | 9 | 6 | 3 | 2 | 1 | | 6 |

| Shooting By Period | | |
|--------------------|-------|-------|
| 1st FG% | 15-30 | 50.0% |
| 3PT% | 1-5 | 20.0% |
| FT% | 4-7 | 57.1% |
| GM FG% | 15-30 | 50.0% |
| 3PT% | 1-5 | 20.0% |
| FT% | 4-7 | 57.1% |

Dead Ball Rebounds: 1, 0

Technical Fouls::NONE

| | BYU | KU |
|------------------|---------------|--------------|
| Biggest lead | 0 (1st 20:00) | 9 (1st 0:57) |
| Best Scoring Run | 6(1st 6:46) | 8(1st 0:57) |
| Lead Changes | 0 | |
| Times Tied | 0 | |
| Time with Lead | 00:00 | 19:30 |

| Points from | BYU | KU |
|---------------|-----|----|
| Turnovers | 3 | 4 |
| Paint | 6 | 24 |
| Second Chance | 4 | 0 |
| Fast Breaks | 0 | 4 |
| Bench | 11 | 7 |

| Period by Period Scoring | | | |
|--------------------------|-----|-----|-----|
| | 1st | 2nd | TOT |
| BYU | 29 | 47 | 76 |
| KU | 35 | 33 | 68 |



Period 2

Quarter Starters:

| | | | | | |
|------------|---------------|----------------|-------------|-----------------|-----------------|
| KU | 1 Dickinson H | 3 Harris Jr. D | 10 Furphy J | 24 Adams, Jr. K | 25 Timberlake N |
| BYU | 0 Waterman N | 20 Johnson S | 21 Knell T | 30 Hall D | 50 Khalifa A |

| Game Time | KU | Score | Diff | BYU |
|-----------|---|--------------|-----------|---|
| 20:00 | 11 MCDOWELL J substitution out | | | |
| 20:00 | 10 FURPHY J substitution in | | | |
| 20:00 | | | | 1 STEWART T substitution out |
| 20:00 | | | | 2 ROBINSON J substitution out |
| 20:00 | | | | 15 SAUNDERS R substitution out |
| 20:00 | | | | 45 TRAORE F substitution out |
| 20:00 | | | | 0 WATERMAN N substitution in |
| 20:00 | | | | 21 KNELL T substitution in |
| 20:00 | | | | 30 HALL D substitution in |
| 20:00 | | | | 50 KHALIFA A substitution in |
| 19:43 | 1 DICKINSON H 2pt FG in the paint, hook shot made (9) | 37-29 | 8 | |
| 19:43 | 25 TIMBERLAKE N assist (1) | | | |
| 19:18 | | | | 0 WATERMAN N 2pt FG outside the paint, jump shot missed |
| 19:14 | 1 DICKINSON H defensive rebound (7) | | | |
| 19:12 | 10 FURPHY J 2pt FG fast break in the paint, layup made (10) | 39-29 | 10 | |
| 19:12 | 1 DICKINSON H assist (1) | | | |
| 18:58 | | | | 50 KHALIFA A 3pt FG , jump shot missed |
| 18:57 | 10 FURPHY J defensive rebound (6) | | | |
| 18:57 | 10 FURPHY J foul drawn (2) | | | 30 HALL D foul personal (3 - 1) |
| 18:41 | 1 DICKINSON H turnover lost ball (1) | | | 50 KHALIFA A steal (1) |
| 18:35 | | | | 0 WATERMAN N 3pt FG from turnover, jump shot missed |
| 18:32 | 25 TIMBERLAKE N defensive rebound (3) | | | |
| 18:28 | 25 TIMBERLAKE N foul drawn (1) | | | 20 JOHNSON S foul shooting (1 - 2) |
| 18:28 | 25 TIMBERLAKE N free throw fast break 1 - 2 made (1) | 40-29 | 11 | |
| 18:28 | 25 TIMBERLAKE N free throw fast break 2 - 2 made (2) | 41-29 | 12 | |
| 18:04 | 1 DICKINSON H foul shooting (1 - 1) | | | 50 KHALIFA A foul drawn (2) |
| 18:04 | | 41-30 | 11 | 50 KHALIFA A free throw 1 - 2 made (5) |
| 18:04 | | 41-31 | 10 | 50 KHALIFA A free throw 2 - 2 made (6) |
| 17:51 | 25 TIMBERLAKE N 3pt FG , jump shot missed | | | |
| 17:48 | 1 DICKINSON H offensive rebound (8) | | | |
| 17:38 | 3 HARRIS JR. D 3pt FG second chance, jump shot missed | | | |
| 17:35 | | | | 0 WATERMAN N defensive rebound (1) |
| 17:28 | | | | 21 KNELL T 3pt FG , jump shot missed |
| 17:26 | 1 DICKINSON H defensive rebound (9) | | | |
| 17:22 | 24 ADAMS, JR. K foul drawn (4) | | | 30 HALL D foul personal (4 - 3) |
| 17:21 | 1 DICKINSON H foul class A technical (2 - 2) | | | |
| 17:21 | 1 DICKINSON H turnover offensive (2) | | | |
| 17:20 | | | | 21 KNELL T foul class A technical (3 - 4) |
| 17:20 | 10 FURPHY J foul drawn (3) | | | 20 JOHNSON S foul personal (2 - 5) |
| 17:20 | | | | 30 HALL D substitution out |
| 17:20 | | | | 2 ROBINSON J substitution in |
| 17:17 | 10 FURPHY J 3pt FG , jump shot missed | | | |
| 17:14 | | | | 21 KNELL T defensive rebound (2) |



BYU at Kansas

02/27/24 Allen Fieldhouse, Lawrence
2023-24 Men's Basketball

Game Time: 7:01 PM
Game Duration: 2:08
Attendance: 16,300

Officials: Gary Maxwell, Terry Oglesby, Jeb Hartness

| Game Time | KU | Score | Diff | BYU |
|-----------|--|--------------|----------|---|
| 17:01 | | | | 2 ROBINSON J 3pt FG , jump shot missed |
| 16:57 | 10 FURPHY J defensive rebound (7) | | | |
| 16:42 | 10 FURPHY J 2pt FG outside the paint, step back jump shot missed | | | |
| 16:39 | | | | 20 JOHNSON S defensive rebound (5) |
| 16:31 | | 41-33 | 8 | 2 ROBINSON J 2pt FG in the paint, layup made (8) |
| 16:31 | | | | 50 KHALIFA A assist (1) |
| 15:54 | 24 ADAMS, JR. K 2pt FG in the paint, jump shot missed | | | |
| 15:54 | | | | 2 ROBINSON J defensive rebound (2) |
| 15:54 | Timeout media | | | |
| 15:54 | | | | 20 JOHNSON S substitution out |
| 15:54 | | | | 50 KHALIFA A substitution out |
| 15:54 | | | | 15 SAUNDERS R substitution in |
| 15:54 | | | | 45 TRAORE F substitution in |
| 15:26 | | 41-35 | 6 | 45 TRAORE F 2pt FG in the paint, hook shot made (2) |
| 15:00 | 3 HARRIS JR. D foul drawn (1) | | | 21 KNELL T foul shooting (4 - 6) |
| 15:00 | 3 HARRIS JR. D free throw 1 - 2 made (5) | 42-35 | 7 | |
| 15:00 | | | | 21 KNELL T substitution out |
| 15:00 | | | | 20 JOHNSON S substitution in |
| 14:59 | 3 HARRIS JR. D free throw 2 - 2 missed | | | |
| 14:58 | | | | 2 ROBINSON J defensive rebound (3) |
| 14:50 | 3 HARRIS JR. D steal (1) | | | 2 ROBINSON J turnover bad pass (2) |
| 14:46 | 1 DICKINSON H foul drawn (4) | | | 2 ROBINSON J foul shooting (2 - 7) |
| 14:46 | 1 DICKINSON H free throw fast break 1 - 2 missed | | | |
| 14:46 | offensive dead ball rebound (2) | | | |
| 14:46 | 1 DICKINSON H free throw fast break 2 - 2 made (10) | 43-35 | 8 | |
| 14:33 | | 43-37 | 6 | 20 JOHNSON S 2pt FG outside the paint, step back jump shot made (5) |
| 14:15 | 1 DICKINSON H foul drawn (5) | | | 0 WATERMAN N foul shooting (3 - 8) |
| 14:15 | 1 DICKINSON H free throw 1 - 2 made (11) | 44-37 | 7 | |
| 14:15 | 1 DICKINSON H free throw 2 - 2 made (12) | 45-37 | 8 | |
| 14:01 | | | | 2 ROBINSON J 3pt FG , jump shot missed |
| 13:59 | | | | 0 WATERMAN N offensive rebound (2) |
| 13:59 | 24 ADAMS, JR. K foul personal (2 - 3) | | | 0 WATERMAN N foul drawn (2) |
| 13:47 | | 45-40 | 5 | 2 ROBINSON J 3pt FG second chance, jump shot made (11) |
| 13:47 | | | | 45 TRAORE F assist (3) |
| 13:36 | 1 DICKINSON H foul drawn (6) | | | 45 TRAORE F foul personal (1 - 9) |
| 13:36 | 3 HARRIS JR. D substitution out | | | |
| 13:36 | 25 TIMBERLAKE N substitution out | | | |
| 13:36 | 11 MCDOWELL J substitution in | | | |
| 13:36 | 13 JACKSON E substitution in | | | |
| 13:36 | 1 DICKINSON H 1&1 free throw 1 made (13) | 46-40 | 6 | |
| 13:36 | 1 DICKINSON H 1&1 free throw 2 made (14) | 47-40 | 7 | |
| 13:36 | 1 DICKINSON H substitution out | | | |
| 13:36 | 23 BRAUN P substitution in | | | |
| 13:19 | 23 BRAUN P foul personal (1 - 4) | | | 45 TRAORE F foul drawn (1) |
| 13:11 | | 47-42 | 5 | 45 TRAORE F 2pt FG in the paint, layup made (4) |
| 12:43 | 24 ADAMS, JR. K 2pt FG in the paint, jump shot missed | | | |
| 12:41 | offensive rebound (28) | | | |



BYU at Kansas

02/27/24 Allen Fieldhouse, Lawrence
2023-24 Men's Basketball

Game Time: 7:01 PM
Game Duration: 2:08
Attendance: 16,300

Officials: Gary Maxwell, Terry Oglesby, Jeb Hartness

| Game Time | KU | Score | Diff | BYU |
|-----------|---|--------------|----------|---|
| 12:38 | 24 ADAMS, JR. K 2pt FG second chance in the paint, jump shot missed | | | |
| 12:33 | offensive dead ball rebound (3) | | | |
| 12:32 | turnover shot clock (9) | | | |
| 12:22 | 24 ADAMS, JR. K steal (2) | | | 45 TRAORE F turnover lost ball (2) |
| 12:16 | 13 JACKSON E turnover bad pass (1) | | | 20 JOHNSON S steal (4) |
| 12:11 | | 47-45 | 2 | 2 ROBINSON J 3pt FG fast break from turnover, jump shot made (14) |
| 12:09 | Timeout media | | | |
| 12:09 | 10 FURPHY J substitution out | | | |
| 12:09 | 23 BRAUN P substitution out | | | |
| 12:09 | 24 ADAMS, JR. K substitution out | | | |
| 12:09 | 1 DICKINSON H substitution in | | | |
| 12:09 | 3 HARRIS JR. D substitution in | | | |
| 12:09 | 25 TIMBERLAKE N substitution in | | | |
| 11:52 | 1 DICKINSON H 2pt FG in the paint, jump shot missed | | | |
| 11:50 | | | | 0 WATERMAN N defensive rebound (3) |
| 11:42 | | | | 2 ROBINSON J 2pt FG outside the paint, jump shot missed |
| 11:39 | 25 TIMBERLAKE N defensive rebound (4) | | | |
| 11:39 | 25 TIMBERLAKE N foul drawn (2) | | | 15 SAUNDERS R foul personal (1 - 10) |
| 11:39 | 25 TIMBERLAKE N free throw 1 - 2 made (3) | 48-45 | 3 | |
| 11:39 | 25 TIMBERLAKE N free throw 2 - 2 made (4) | 49-45 | 4 | |
| 11:19 | | 49-48 | 1 | 0 WATERMAN N 3pt FG , jump shot made (5) |
| 11:19 | | | | 45 TRAORE F assist (4) |
| 11:02 | 3 HARRIS JR. D 2pt FG in the paint, floating jump shot made (7) | 51-48 | 3 | |
| 10:44 | | | | 2 ROBINSON J 2pt FG in the paint, step back jump shot missed |
| 10:40 | 1 DICKINSON H defensive rebound (10) | | | |
| 10:35 | 1 DICKINSON H foul drawn (7) | | | 0 WATERMAN N foul personal (4 - 11) |
| 10:35 | 1 DICKINSON H free throw 1 - 2 missed | | | |
| 10:35 | offensive dead ball rebound (4) | | | |
| 10:35 | 11 MCDOWELL J substitution out | | | |
| 10:35 | 13 JACKSON E substitution out | | | |
| 10:35 | 10 FURPHY J substitution in | | | |
| 10:35 | 24 ADAMS, JR. K substitution in | | | |
| 10:35 | | | | 0 WATERMAN N substitution out |
| 10:35 | | | | 2 ROBINSON J substitution out |
| 10:35 | | | | 21 KNELL T substitution in |
| 10:35 | | | | 30 HALL D substitution in |
| 10:34 | 1 DICKINSON H free throw 2 - 2 missed | | | |
| 10:32 | | | | 45 TRAORE F defensive rebound (4) |
| 10:11 | | | | 20 JOHNSON S 3pt FG , jump shot missed |
| 10:09 | 3 HARRIS JR. D defensive rebound (1) | | | |
| 09:56 | 25 TIMBERLAKE N 2pt FG outside the paint, jump shot missed | | | |
| 09:53 | 1 DICKINSON H offensive rebound (11) | | | |
| 09:53 | 1 DICKINSON H 2pt FG second chance in the paint, jump shot missed | | | |
| 09:53 | | | | defensive rebound (26) |
| 09:53 | | | | 20 JOHNSON S substitution out |
| 09:53 | | | | 45 TRAORE F substitution out |
| 09:53 | | | | 2 ROBINSON J substitution in |



BYU at Kansas

02/27/24 Allen Fieldhouse, Lawrence
2023-24 Men's Basketball

Game Time: 7:01 PM
Game Duration: 2:08
Attendance: 16,300

Officials: Gary Maxwell, Terry Oglesby, Jeb Hartness

| Game Time | KU | Score | Diff | BYU |
|-----------|--|--------------|----------|---|
| 09:53 | | | | 50 KHALIFA A substitution in |
| 09:33 | | | | 21 KNELL T 2pt FG in the paint, layup missed |
| 09:31 | 10 FURPHY J defensive rebound (8) | | | |
| 09:23 | 1 DICKINSON H foul drawn (8) | | | 2 ROBINSON J foul personal (3 - 12) |
| 09:23 | 1 DICKINSON H free throw 1 - 2 missed | | | |
| 09:23 | offensive dead ball rebound (5) | | | |
| 09:22 | 1 DICKINSON H free throw 2 - 2 missed | | | |
| 09:21 | | | | 15 SAUNDERS R defensive rebound (4) |
| 08:57 | | | | 50 KHALIFA A 2pt FG in the paint, layup blocked |
| 08:57 | 1 DICKINSON H block (1) | | | |
| 08:54 | 10 FURPHY J defensive rebound (9) | | | |
| 08:40 | 10 FURPHY J 3pt FG , jump shot missed | | | |
| 08:34 | | | | 30 HALL D defensive rebound (2) |
| 08:34 | jump ball situation | | | |
| 08:34 | 1 DICKINSON H substitution out | | | |
| 08:34 | 23 BRAUN P substitution in | | | |
| 08:15 | | 51-50 | 1 | 2 ROBINSON J 2pt FG in the paint, layup made (16) |
| 08:03 | 3 HARRIS JR. D foul drawn (2) | | | 50 KHALIFA A foul shooting (2 - 13) |
| 08:03 | 3 HARRIS JR. D free throw 1 - 2 missed | | | |
| 08:03 | offensive dead ball rebound (6) | | | |
| 08:03 | | | | 50 KHALIFA A substitution out |
| 08:03 | | | | 45 TRAORE F substitution in |
| 08:03 | 3 HARRIS JR. D free throw 2 - 2 made (8) | 52-50 | 2 | |
| 07:50 | 23 BRAUN P foul drawn (1) | | | 45 TRAORE F foul offensive (2 - 14) |
| 07:50 | | | | 45 TRAORE F turnover offensive (3) |
| 07:50 | Timeout media | | | |
| 07:50 | | | | foul coach class A technical (15) |
| 07:50 | | | | 15 SAUNDERS R substitution out |
| 07:50 | | | | 0 WATERMAN N substitution in |
| 07:50 | 3 HARRIS JR. D free throw 1 - 2 made (9) | 53-50 | 3 | |
| 07:50 | 3 HARRIS JR. D free throw 2 - 2 made (10) | 54-50 | 4 | |
| 07:26 | 23 BRAUN P 2pt FG in the paint, alleyoop made (4) | 56-50 | 6 | |
| 07:26 | 3 HARRIS JR. D assist (5) | | | |
| 07:05 | | | | 2 ROBINSON J 3pt FG , jump shot missed |
| 07:03 | | | | 30 HALL D offensive rebound (3) |
| 06:57 | 10 FURPHY J foul shooting (3 - 5) | | | 30 HALL D foul drawn (2) |
| 06:57 | | 56-51 | 5 | 30 HALL D free throw 1 - 2 made (6) |
| 06:57 | | 56-52 | 4 | 30 HALL D free throw 2 - 2 made (7) |
| 06:31 | 3 HARRIS JR. D 2pt FG outside the paint, hook shot missed | | | |
| 06:30 | | | | 30 HALL D defensive rebound (4) |
| 06:30 | 23 BRAUN P foul personal (2 - 6) | | | 30 HALL D foul drawn (3) |
| 06:30 | 23 BRAUN P substitution out | | | |
| 06:30 | 1 DICKINSON H substitution in | | | |
| 06:07 | | 56-54 | 2 | 30 HALL D 2pt FG in the paint, driving layup made (9) |
| 05:41 | 3 HARRIS JR. D 2pt FG in the paint, jump shot made (12) | 58-54 | 4 | |
| 05:31 | | | | 21 KNELL T 3pt FG , jump shot missed |
| 05:28 | 25 TIMBERLAKE N defensive rebound (5) | | | |
| 05:20 | 10 FURPHY J 2pt FG in the paint, floating jump shot missed | | | |
| 05:17 | | | | 45 TRAORE F defensive rebound (5) |



BYU at Kansas

02/27/24 Allen Fieldhouse, Lawrence
2023-24 Men's Basketball

Game Time: 7:01 PM
Game Duration: 2:08
Attendance: 16,300

Officials: Gary Maxwell, Terry Oglesby, Jeb Hartness

| Game Time | KU | Score | Diff | BYU |
|-----------|--|--------------|-----------|--|
| 05:14 | | 58-57 | 1 | 21 KNELL T 3pt FG fast break, jump shot made (7) |
| 05:14 | | | | 30 HALL D assist (2) |
| 04:50 | 25 TIMBERLAKE N turnover lost ball (1) | | | 30 HALL D steal (1) |
| 04:50 | 10 FURPHY J foul personal (4 - 7) | | | 30 HALL D foul drawn (4) |
| 04:50 | | | | 0 WATERMAN N substitution out |
| 04:50 | | | | 15 SAUNDERS R substitution in |
| 04:50 | | | | 21 KNELL T substitution out |
| 04:50 | | | | 20 JOHNSON S substitution in |
| 04:50 | | 58-58 | 0 | 30 HALL D 1&1 free throw 1 made (10) |
| 04:50 | | 58-59 | -1 | 30 HALL D 1&1 free throw 2 made (11) |
| 04:37 | 3 HARRIS JR. D 2pt FG in the paint, layup missed | | | |
| 04:34 | 24 ADAMS, JR. K offensive rebound (2) | | | |
| 04:34 | 24 ADAMS, JR. K 2pt FG second chance in the paint, layup made (11) | 60-59 | 1 | |
| 04:26 | 25 TIMBERLAKE N foul personal (1 - 8) | | | 15 SAUNDERS R foul drawn (1) |
| 04:25 | | | | 15 SAUNDERS R 1&1 free throw 1 missed |
| 04:23 | 24 ADAMS, JR. K defensive rebound (3) | | | |
| 03:59 | 10 FURPHY J 3pt FG , jump shot missed | | | |
| 03:56 | | | | 45 TRAORE F defensive rebound (6) |
| 03:44 | | 60-62 | -2 | 30 HALL D 3pt FG , jump shot made (14) |
| 03:44 | | | | 45 TRAORE F assist (5) |
| 03:35 | Timeout 30 Sec | | | |
| 03:35 | Timeout media | | | |
| 03:35 | | | | 15 SAUNDERS R substitution out |
| 03:35 | | | | 0 WATERMAN N substitution in |
| 03:26 | 24 ADAMS, JR. K 2pt FG in the paint, jump shot missed | | | |
| 03:25 | | | | 0 WATERMAN N defensive rebound (4) |
| 03:25 | 24 ADAMS, JR. K foul personal (3 - 9) | | | 0 WATERMAN N foul drawn (3) |
| 03:25 | | 60-63 | -3 | 0 WATERMAN N 1&1 free throw 1 made (6) |
| 03:24 | | | | 0 WATERMAN N 1&1 free throw 2 missed |
| 03:23 | 24 ADAMS, JR. K defensive rebound (4) | | | |
| 03:06 | 25 TIMBERLAKE N 3pt FG , jump shot made (7) | 63-63 | 0 | |
| 03:06 | 24 ADAMS, JR. K assist (2) | | | |
| 02:47 | | 63-66 | -3 | 0 WATERMAN N 3pt FG , jump shot made (9) |
| 02:47 | | | | 30 HALL D assist (3) |
| 02:28 | 1 DICKINSON H 3pt FG , jump shot made (17) | 66-66 | 0 | |
| 02:28 | 3 HARRIS JR. D assist (6) | | | |
| 02:04 | 24 ADAMS, JR. K foul shooting (4 - 10) | | | 2 ROBINSON J foul drawn (1) |
| 02:04 | | 66-67 | -1 | 2 ROBINSON J free throw 1 - 2 made (17) |
| 02:04 | | 66-68 | -2 | 2 ROBINSON J free throw 2 - 2 made (18) |
| 01:51 | 24 ADAMS, JR. K 2pt FG in the paint, jump shot blocked | | | |
| 01:51 | | | | 0 WATERMAN N block (2) |
| 01:49 | | | | 0 WATERMAN N defensive rebound (5) |
| 01:33 | | 66-71 | -5 | 30 HALL D 3pt FG , step back jump shot made (17) |
| 01:31 | | | | Timeout 30 Sec |
| 01:11 | 25 TIMBERLAKE N 2pt FG in the paint, jump shot missed | | | |
| 01:09 | | | | 0 WATERMAN N defensive rebound (6) |
| 00:48 | 1 DICKINSON H foul personal (3 - 11) | | | 30 HALL D foul drawn (5) |
| 00:48 | | | | 30 HALL D free throw 1 - 2 missed |



BYU at Kansas

02/27/24 Allen Fieldhouse, Lawrence
2023-24 Men's Basketball

Game Time: 7:01 PM
Game Duration: 2:08
Attendance: 16,300

Officials: Gary Maxwell, Terry Oglesby, Jeb Hartness

| Game Time | KU | Score | Diff | BYU |
|---------------------|--|--------------|-----------|--|
| 00:48 | | | | offensive dead ball rebound (3) |
| 00:48 | | 66-72 | -6 | 30 HALL D free throw 2 - 2 made (18) |
| 00:38 | 25 TIMBERLAKE N 3pt FG , jump shot missed | | | |
| 00:35 | 3 HARRIS JR. D offensive rebound (2) | | | |
| 00:33 | 25 TIMBERLAKE N 3pt FG second chance, jump shot missed | | | |
| 00:29 | 24 ADAMS, JR. K offensive rebound (5) | | | |
| 00:26 | 1 DICKINSON H foul drawn (9) | | | 30 HALL D foul personal (5 - 16) |
| 00:26 | | | | 30 HALL D substitution out |
| 00:26 | | | | 15 SAUNDERS R substitution in |
| 00:26 | 1 DICKINSON H free throw 1 - 2 missed | | | |
| 00:26 | offensive dead ball rebound (7) | | | |
| 00:25 | 1 DICKINSON H free throw 2 - 2 missed | | | |
| 00:23 | | | | 45 TRAORE F defensive rebound (7) |
| 00:23 | 3 HARRIS JR. D foul personal (2 - 12) | | | 45 TRAORE F foul drawn (2) |
| 00:23 | | 66-73 | -7 | 45 TRAORE F free throw 1 - 2 made (5) |
| 00:23 | 1 DICKINSON H substitution out | | | |
| 00:23 | 13 JACKSON E substitution in | | | |
| 00:23 | | | | 15 SAUNDERS R substitution out |
| 00:23 | | | | 21 KNELL T substitution in |
| 00:23 | | 66-74 | -8 | 45 TRAORE F free throw 2 - 2 made (6) |
| 00:18 | 25 TIMBERLAKE N foul drawn (3) | | | 20 JOHNSON S foul personal (3 - 17) |
| 00:18 | 25 TIMBERLAKE N free throw 1 - 2 made (8) | 67-74 | -7 | |
| 00:18 | 25 TIMBERLAKE N free throw 2 - 2 made (9) | 68-74 | -6 | |
| 00:18 | 25 TIMBERLAKE N substitution out | | | |
| 00:18 | 11 MCDOWELL J substitution in | | | |
| 00:18 | | | | Timeout 30 Sec |
| 00:18 | | | | 45 TRAORE F substitution out |
| 00:18 | | | | 15 SAUNDERS R substitution in |
| 00:17 | 13 JACKSON E foul personal (1 - 13) | | | 20 JOHNSON S foul drawn (1) |
| 00:17 | | 68-75 | -7 | 20 JOHNSON S free throw 1 - 2 made (6) |
| 00:17 | | 68-76 | -8 | 20 JOHNSON S free throw 2 - 2 made (7) |
| 00:17 | 24 ADAMS, JR. K substitution out | | | |
| 00:17 | 14 CASSIDY P substitution in | | | |
| 00:13 | 10 FURPHY J 3pt FG , jump shot missed | | | |
| 00:12 | | | | defensive rebound (37) |
| END OF GAME | | | | |
| KU 68-76 BYU | | | | |



BYU at Kansas

02/27/24 Allen Fieldhouse, Lawrence
2023-24 Men's Basketball

Game Time: 7:01 PM
Game Duration: 2:08
Attendance: 16,300

Officials: Gary Maxwell, Terry Oglesby, Jeb Hartness

BYU - 47

| NO. | Name | Min | FG | 3P | FT | Rebounds | | | Fouls | | TP | AS | TO | ST | Blocks | | +/- |
|---------------|------------------|---------|-------|------|-------|----------|----|-----|-------|----|----|----|----|----|--------|----|-----|
| | | | M-A | M-A | M-A | OR | DR | TOT | PF | FD | | | | | BS | BA | |
| 0 | Noah Waterman | F 16:00 | 2-4 | 2-3 | 1-2 | 1 | 5 | 6 | 2 | 2 | 7 | 0 | 0 | 0 | 1 | 0 | 10 |
| 50 | Aly Khalifa | C 05:56 | 0-2 | 0-1 | 2-2 | 0 | 0 | 0 | 1 | 1 | 2 | 1 | 0 | 1 | 0 | 1 | 0 |
| 20 | Spencer Johnson | G 14:03 | 1-2 | 0-1 | 2-2 | 0 | 1 | 1 | 3 | 1 | 4 | 0 | 0 | 1 | 0 | 0 | 11 |
| 21 | Trevin Knell | G 11:09 | 1-4 | 1-3 | 0-0 | 0 | 1 | 1 | 2 | 0 | 3 | 0 | 0 | 0 | 0 | 0 | 2 |
| 30 | Dallin Hall | G 12:49 | 3-3 | 2-2 | 5-6 | 1 | 2 | 3 | 3 | 4 | 13 | 2 | 0 | 1 | 0 | 0 | 5 |
| 1 | Trey Stewart | 00:00 | 0-0 | 0-0 | 0-0 | 0 | 0 | 0 | 0 | 0 | 0 | 0 | 0 | 0 | 0 | 0 | 0 |
| 2 | Jaxson Robinson | 16:38 | 4-9 | 2-5 | 2-2 | 0 | 2 | 2 | 2 | 1 | 12 | 0 | 1 | 0 | 0 | 0 | 18 |
| 15 | Richie Saunders | 09:40 | 0-0 | 0-0 | 0-1 | 0 | 1 | 1 | 1 | 1 | 0 | 0 | 0 | 0 | 0 | 0 | 12 |
| 45 | Fousseyni Traore | 13:46 | 2-2 | 0-0 | 2-2 | 0 | 4 | 4 | 2 | 2 | 6 | 3 | 2 | 0 | 0 | 0 | 12 |
| Team | | | | | | 0 | 2 | 2 | | | 0 | | 0 | | | | |
| Totals | | | 13-26 | 7-15 | 14-17 | 2 | 18 | 20 | 17 | 12 | 47 | 6 | 3 | 3 | 1 | 1 | 14 |

| Shooting By Period | | |
|---------------------|-------|-------|
| 2 nd FG% | 13-26 | 50.0% |
| 3PT% | 7-15 | 46.7% |
| FT% | 14-17 | 82.4% |
| GM FG% | 13-26 | 50.0% |
| 3PT% | 7-15 | 46.7% |
| FT% | 14-17 | 82.4% |

Dead Ball Rebounds: 1, 0

Technical Fouls: Knell 2nd 17:20 Coach 2nd 7:50

Kansas - 33

| NO. | Name | Min | FG | 3P | FT | Rebounds | | | Fouls | | TP | AS | TO | ST | Blocks | | +/- |
|---------------|--------------------|---------|------|------|-------|----------|----|-----|-------|----|----|----|----|----|--------|----|-----|
| | | | M-A | M-A | M-A | OR | DR | TOT | PF | FD | | | | | BS | BA | |
| 24 | KJ Adams, Jr. | F 18:09 | 1-6 | 0-0 | 0-0 | 2 | 2 | 4 | 3 | 1 | 2 | 1 | 0 | 1 | 0 | 1 | -15 |
| 1 | Hunter Dickinson | C 16:05 | 2-4 | 1-1 | 5-12 | 2 | 3 | 5 | 3 | 6 | 10 | 1 | 2 | 0 | 1 | 0 | -9 |
| 3 | Dajuan Harris Jr. | G 18:33 | 2-5 | 0-1 | 4-6 | 1 | 1 | 2 | 1 | 2 | 8 | 2 | 0 | 1 | 0 | 0 | -11 |
| 10 | Johnny Furphy | G 18:26 | 1-7 | 0-4 | 0-0 | 0 | 4 | 4 | 2 | 2 | 2 | 0 | 0 | 0 | 0 | 0 | -15 |
| 25 | Nicolas Timberlake | G 18:15 | 1-6 | 1-4 | 6-6 | 0 | 3 | 3 | 1 | 3 | 9 | 1 | 1 | 0 | 0 | 0 | -9 |
| 11 | Jamari McDowell | 03:20 | 0-0 | 0-0 | 0-0 | 0 | 0 | 0 | 0 | 0 | 0 | 0 | 0 | 0 | 0 | 0 | -4 |
| 13 | Elmarko Jackson | 03:25 | 0-0 | 0-0 | 0-0 | 0 | 0 | 0 | 1 | 0 | 0 | 0 | 1 | 0 | 0 | 0 | -3 |
| 23 | Parker Braun | 03:31 | 1-1 | 0-0 | 0-0 | 0 | 0 | 0 | 2 | 1 | 2 | 0 | 0 | 0 | 0 | 0 | -4 |
| 14 | Patrick Cassidy | 00:17 | 0-0 | 0-0 | 0-0 | 0 | 0 | 0 | 0 | 0 | 0 | 0 | 0 | 0 | 0 | 0 | 0 |
| Team | | | | | | 1 | 0 | 1 | | | 0 | | 1 | | | | |
| Totals | | | 8-29 | 2-10 | 15-24 | 6 | 13 | 19 | 13 | 15 | 33 | 5 | 5 | 2 | 1 | 1 | -14 |

| Shooting By Period | | |
|---------------------|-------|-------|
| 2 nd FG% | 8-29 | 27.6% |
| 3PT% | 2-10 | 20.0% |
| FT% | 15-24 | 62.5% |
| GM FG% | 8-29 | 27.6% |
| 3PT% | 2-10 | 20.0% |
| FT% | 15-24 | 62.5% |

Dead Ball Rebounds: 6, 0

Technical Fouls: Dickinson 2nd 17:21

| | BYU | KU |
|------------------|--------------------------|----------------------------|
| Biggest lead | 8 (2 nd 0:23) | 12 (2 nd 18:28) |
| Best Scoring Run | 8 (2 nd 0:23) | 6 (2 nd 18:28) |
| Lead Changes | 3 | |
| Times Tied | 3 | |
| Time with Lead | 03:17 | 15:43 |

| Points from | BYU | KU |
|---------------|-----|----|
| Turnovers | 5 | 3 |
| Paint | 10 | 12 |
| Second Chance | 5 | 2 |
| Fast Breaks | 6 | 5 |
| Bench | 18 | 2 |

| | Period by Period Scoring | | |
|-----|--------------------------|-----|-----|
| | 1st | 2nd | TOT |
| BYU | 29 | 47 | 76 |
| KU | 35 | 33 | 68 |



BYU at Kansas

02/27/24 Allen Fieldhouse, Lawrence
2023-24 Men's Basketball

Game Time: 7:01 PM
Game Duration: 2:08
Attendance: 16,300

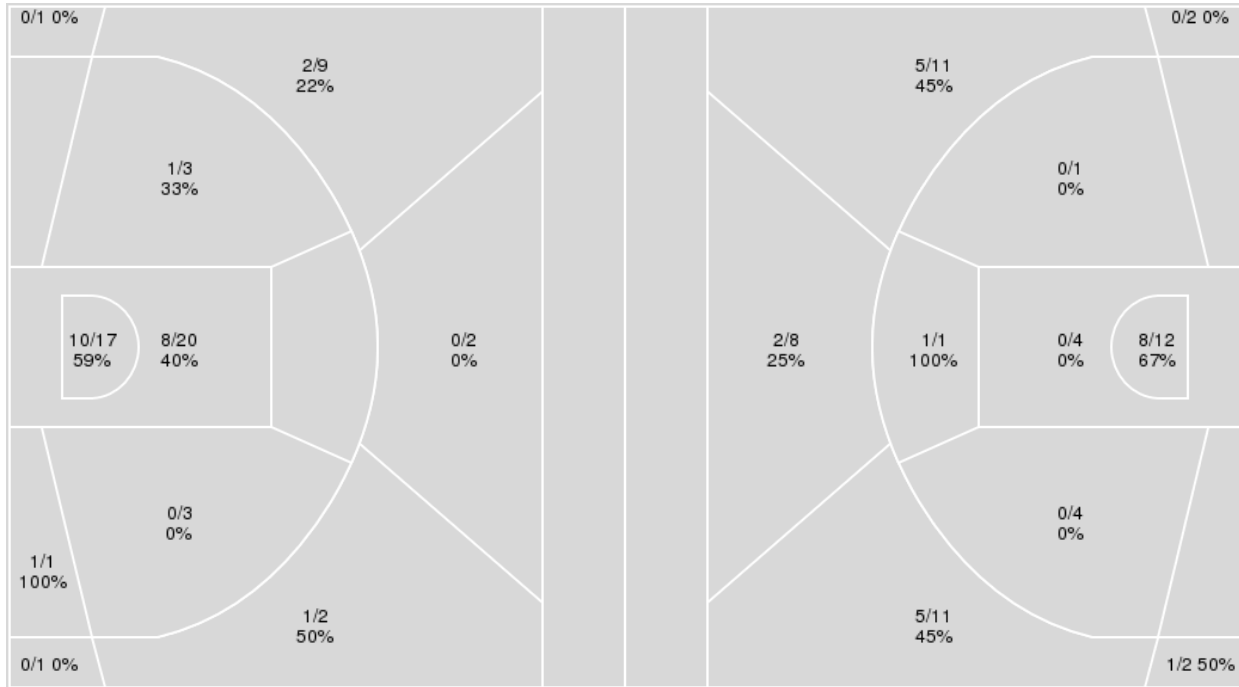
Officials: Gary Maxwell, Terry Oglesby, Jeb Hartness

{ Players => All; } FG Types => All; Results => All;

{ Players => 0, 1, 2, 4, 10, 12, 15, 20, 21, 23, 24, 25, 30, 45, 50, 51; }
FG Types => All; Results => All;

Kansas

BYU



| Kansas | M/A | % |
|---------------|------------|----------|
| Field Goals | 23/59 | 39 |
| 2 Points | 20/44 | 45 |
| 3 Points | 3/15 | 20 |
| Free Throws | 19/31 | 61 |

| BYU | M/A | % |
|-------------|------------|----------|
| Field Goals | 22/56 | 39 |
| 2 Points | 9/22 | 41 |
| 3 Points | 13/34 | 38 |
| Free Throws | 19/24 | 79 |



BYU at Kansas

02/27/24 Allen Fieldhouse, Lawrence
2023-24 Men's Basketball

Game Time: 7:01 PM
Game Duration: 2:08
Attendance: 16,300

Officials: Gary Maxwell, Terry Oglesby, Jeb Hartness

BYU

| No | Name | Mins | | Score | | Points Diff | | Points per Min | | Assists | | Rebounds | | Steals | | Turnovers | |
|----|------------------|-------|-------|---------|---------|-------------|-----|----------------|------|---------|-----|----------|-----|--------|-----|-----------|-----|
| | | On | Off | On | Off | On | Off | On | Off | On | Off | On | Off | On | Off | On | Off |
| 0 | Noah Waterman | 23:06 | 16:54 | 45 - 48 | 31 - 20 | -3 | 11 | 1.95 | 1.83 | 5 | 6 | 19 | 18 | 4 | 4 | 3 | 4 |
| 1 | Trey Stewart | 06:36 | 33:24 | 10 - 13 | 66 - 55 | -3 | 11 | 1.52 | 1.98 | 3 | 8 | 6 | 31 | 1 | 7 | 1 | 6 |
| 2 | Jaxson Robinson | 30:53 | 09:07 | 71 - 54 | 5 - 14 | 17 | -9 | 2.30 | 0.55 | 11 | 0 | 30 | 7 | 7 | 1 | 7 | 0 |
| 15 | Richie Saunders | 22:34 | 17:26 | 49 - 30 | 27 - 38 | 19 | -11 | 2.17 | 1.55 | 8 | 3 | 23 | 14 | 5 | 3 | 6 | 1 |
| 20 | Spencer Johnson | 28:46 | 11:14 | 53 - 48 | 23 - 20 | 5 | 3 | 1.84 | 2.05 | 8 | 3 | 28 | 9 | 6 | 2 | 3 | 4 |
| 21 | Trevin Knell | 22:11 | 17:49 | 33 - 36 | 43 - 32 | -3 | 11 | 1.49 | 2.41 | 4 | 7 | 20 | 17 | 3 | 5 | 4 | 3 |
| 30 | Dallin Hall | 26:13 | 13:47 | 45 - 43 | 31 - 25 | 2 | 6 | 1.72 | 2.25 | 5 | 6 | 23 | 14 | 6 | 2 | 4 | 3 |
| 45 | Fousseyni Traore | 22:53 | 17:08 | 60 - 41 | 16 - 27 | 19 | -11 | 2.62 | 0.93 | 9 | 2 | 21 | 16 | 7 | 1 | 7 | 0 |
| 50 | Aly Khalifa | 16:49 | 23:11 | 14 - 27 | 62 - 41 | -13 | 21 | 0.83 | 2.67 | 2 | 9 | 15 | 22 | 1 | 7 | 0 | 7 |

Kansas

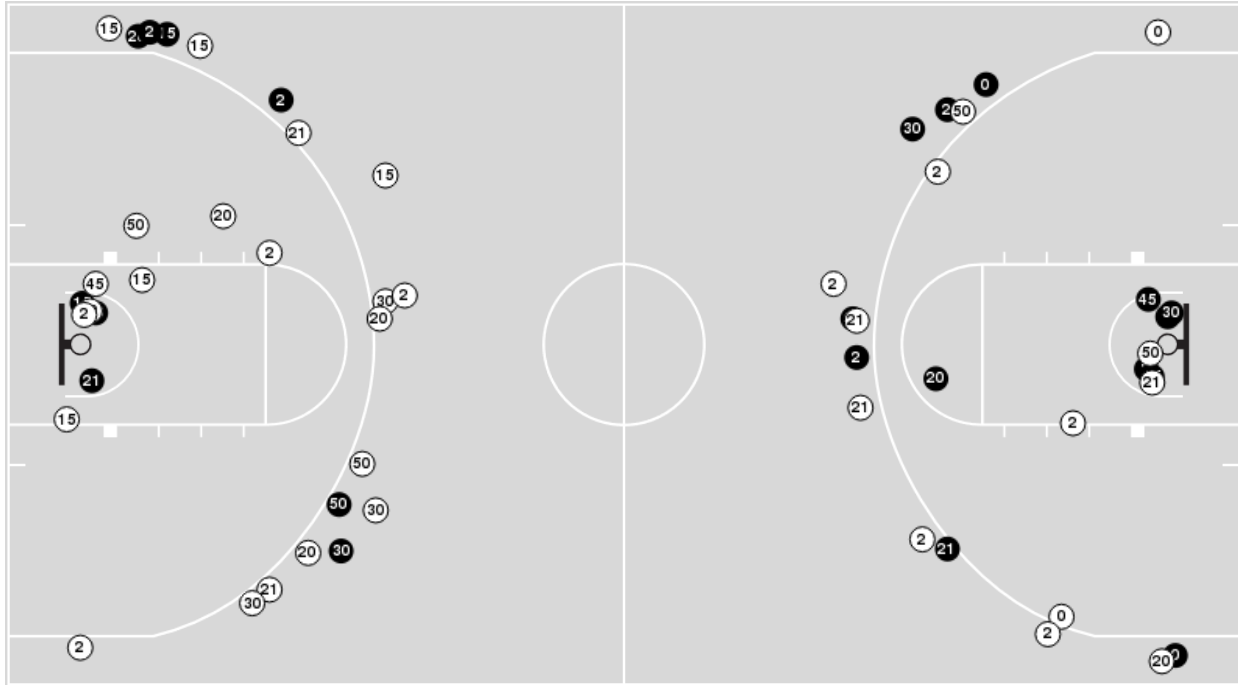
| No | Name | Mins | | Score | | Points Diff | | Points per Min | | Assists | | Rebounds | | Steals | | Turnovers | |
|----|--------------------|-------|-------|---------|---------|-------------|-----|----------------|------|---------|-----|----------|-----|--------|-----|-----------|-----|
| | | On | Off | On | Off | On | Off | On | Off | On | Off | On | Off | On | Off | On | Off |
| 1 | Hunter Dickinson | 30:24 | 09:36 | 47 - 55 | 21 - 21 | -8 | 0 | 1.55 | 2.19 | 9 | 5 | 34 | 6 | 3 | 2 | 8 | 3 |
| 3 | Dajuan Harris Jr. | 34:30 | 05:30 | 60 - 64 | 8 - 12 | -4 | -4 | 1.74 | 1.45 | 12 | 2 | 37 | 3 | 3 | 2 | 8 | 3 |
| 10 | Johnny Furphy | 30:48 | 09:12 | 55 - 60 | 13 - 16 | -5 | -3 | 1.79 | 1.41 | 12 | 2 | 30 | 10 | 4 | 1 | 7 | 4 |
| 11 | Jamari McDowell | 13:20 | 26:41 | 21 - 30 | 47 - 46 | -9 | 1 | 1.58 | 1.76 | 4 | 10 | 11 | 29 | 3 | 2 | 6 | 5 |
| 13 | Elmarko Jackson | 13:28 | 26:32 | 25 - 23 | 43 - 53 | 2 | -10 | 1.86 | 1.62 | 4 | 10 | 14 | 26 | 2 | 3 | 4 | 7 |
| 14 | Patrick Cassidy | 00:17 | 39:43 | 0 - 0 | 68 - 76 | 0 | -8 | 0.00 | 1.71 | 0 | 14 | 0 | 40 | 0 | 5 | 0 | 11 |
| 23 | Parker Braun | 10:53 | 29:07 | 19 - 18 | 49 - 58 | 1 | -9 | 1.75 | 1.68 | 5 | 9 | 8 | 32 | 2 | 3 | 4 | 7 |
| 24 | KJ Adams, Jr. | 33:47 | 06:13 | 61 - 70 | 7 - 6 | -9 | 1 | 1.81 | 1.12 | 14 | 0 | 32 | 8 | 5 | 0 | 10 | 1 |
| 25 | Nicolas Timberlake | 32:34 | 07:27 | 52 - 60 | 16 - 16 | -8 | 0 | 1.60 | 2.15 | 10 | 4 | 34 | 6 | 3 | 2 | 8 | 3 |



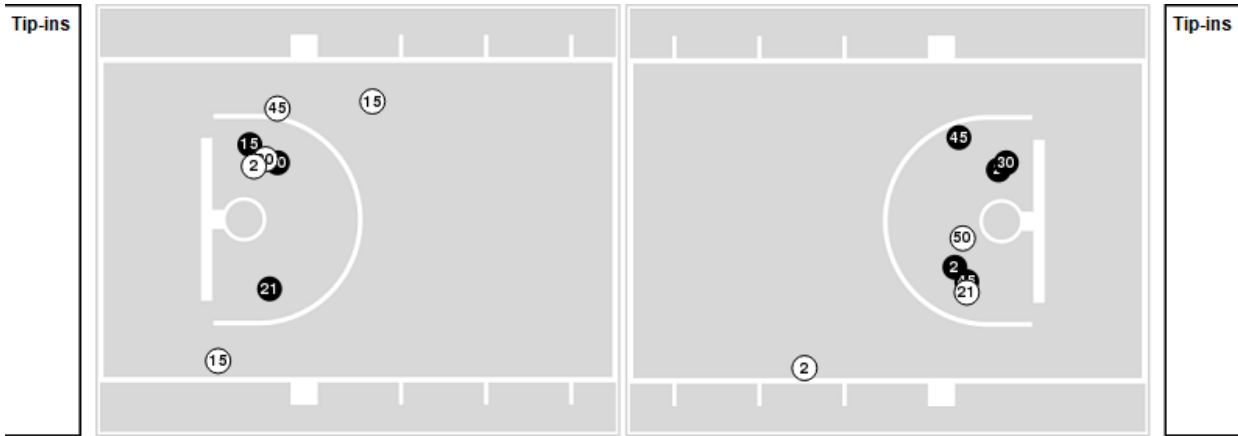
Players => 0, 1, 2, 4, 10, 12, 15, 20, 21, 23, 24, 25, 30, 45, 50, 51 FG Types=>All Results=>All

BYU

All Field Goals



Blow Up Chart



N Made **O** Missed **N** - Player Number

| BYU | M/A | % |
|-------------|-------|----|
| Field Goals | 22/56 | 39 |
| 2 Points | 9/22 | 41 |
| 3 Points | 13/34 | 38 |
| Free Throws | 19/24 | 79 |

| BYU | M/A | % |
|----------------------|-------------|-----|
| Points in the Paint | 16 (8 / 16) | 50 |
| Fast Break Points | 6 (2/2) | 100 |
| Second Chance Points | 9 (5/7) | 71 |
| Effective FG% | 51 | |



BYU at Kansas

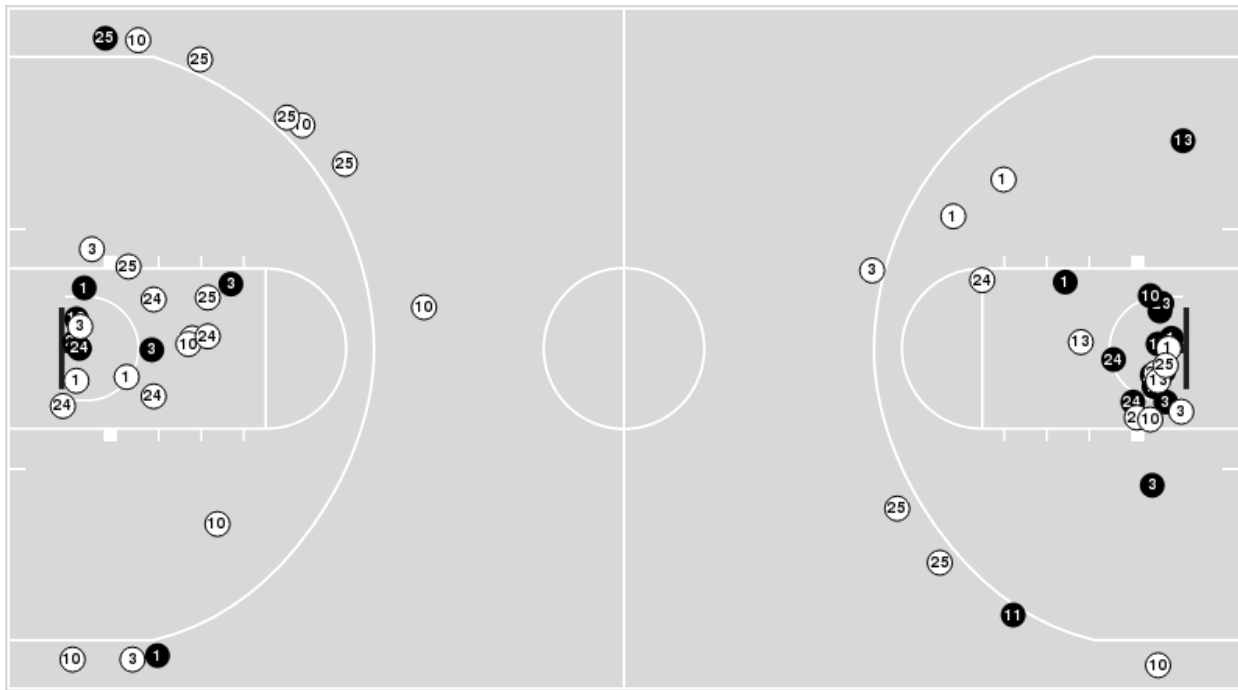
02/27/24 Allen Fieldhouse, Lawrence
2023-24 Men's Basketball

Officials: Gary Maxwell, Terry Oglesby, Jeb Hartness

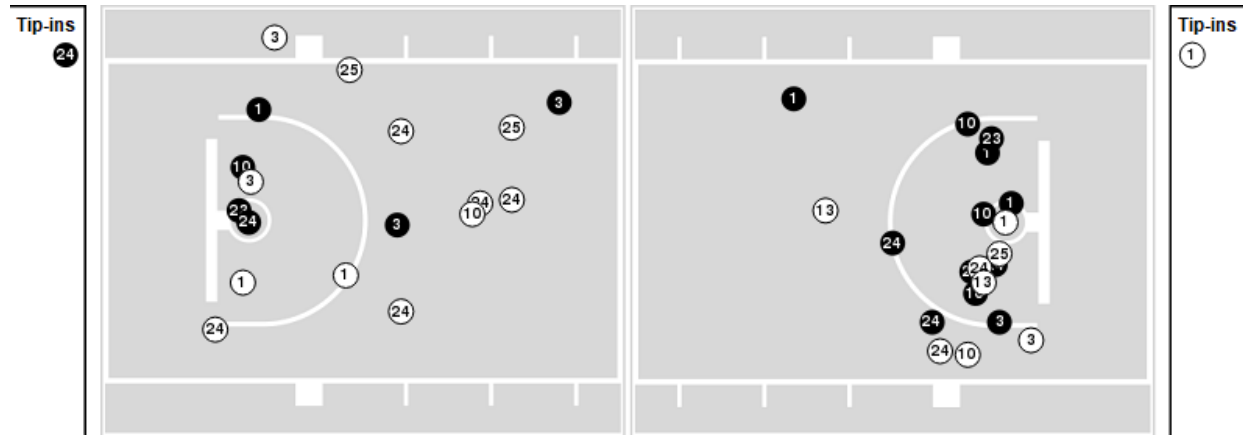
Players => AllFG Types=>AllResults=>All

Kansas

All Field Goals



Blow Up Chart



● Made ○ Missed N - Player Number

| Kansas | M/A | % |
|-------------|-------|----|
| Field Goals | 23/59 | 39 |
| 2 Points | 20/44 | 45 |
| 3 Points | 3/15 | 20 |
| Free Throws | 19/31 | 61 |

| Kansas | M/A | % |
|----------------------|--------------|----|
| Points in the Paint | 36 (18 / 37) | 49 |
| Fast Break Points | 9 (6/7) | 86 |
| Second Chance Points | 2 (1/9) | 11 |
| Effective FG% | 42 | |



BYU at Kansas

02/27/24 Allen Fieldhouse, Lawrence
2023-24 Men's Basketball

Game Time: 7:01 PM
Game Duration: 2:08
Attendance: 16,300

Officials: Gary Maxwell, Terry Oglesby, Jeb Hartness

BYU

| Lineup | Quarter On | Time On | Quarter Off | Time Off | Time on Court | Score | Score Diff | Reb | Stl | Tov | Ass | PPP |
|--|------------|---------|-------------|----------|---------------|-------|------------|-----|-----|-----|-----|--------|
| 0- Waterman N/ 20- Johnson S/ 21- Knell T/ 30- Hall D/ 50- Khalifa A/ | 1 | 20:00 | 1 | 15:56 | 04:04 | 3-8 | -5 | 3 | 0 | 0 | 0 | 0.5102 |
| 0- Waterman N/ 2- Robinson J/ 20- Johnson S/ 21- Knell T/ 45- Traore F/ | 1 | 15:56 | 1 | 15:56 | 00:00 | 0-0 | 0 | 0 | 0 | 0 | 0 | 0.0000 |
| 0- Waterman N/ 2- Robinson J/ 21- Knell T/ 30- Hall D/ 45- Traore F/ | 1 | 15:56 | 1 | 15:21 | 00:35 | 0-0 | 0 | 0 | 1 | 1 | 0 | 0.0000 |
| 2- Robinson J/ 15- Saunders R/ 21- Knell T/ 30- Hall D/ 45- Traore F/ | 1 | 15:21 | 1 | 12:41 | 02:40 | 6-6 | 0 | 3 | 0 | 1 | 1 | 1.2295 |
| 1- Stewart T/ 2- Robinson J/ 15- Saunders R/ 21- Knell T/ 45- Traore F/ | 1 | 12:41 | 1 | 11:32 | 01:09 | 4-2 | 2 | 1 | 0 | 1 | 1 | 1.6393 |
| 1- Stewart T/ 2- Robinson J/ 15- Saunders R/ 21- Knell T/ 50- Khalifa A/ | 1 | 11:32 | 1 | 11:31 | 00:01 | 0-0 | 0 | 0 | 0 | 0 | 0 | 0.0000 |
| 1- Stewart T/ 2- Robinson J/ 15- Saunders R/ 20- Johnson S/ 50- Khalifa A/ | 1 | 11:31 | 1 | 08:51 | 02:40 | 3-3 | 0 | 4 | 0 | 0 | 1 | 0.6000 |
| 0- Waterman N/ 2- Robinson J/ 21- Knell T/ 30- Hall D/ 50- Khalifa A/ | 1 | 08:51 | 1 | 07:59 | 00:52 | 2-4 | -2 | 0 | 0 | 0 | 0 | 2.2727 |
| 2- Robinson J/ 15- Saunders R/ 20- Johnson S/ 30- Hall D/ 45- Traore F/ | 1 | 07:59 | 1 | 04:27 | 03:32 | 8-4 | 4 | 4 | 3 | 1 | 1 | 1.1429 |
| 1- Stewart T/ 2- Robinson J/ 15- Saunders R/ 20- Johnson S/ 45- Traore F/ | 1 | 04:27 | 1 | 04:27 | 00:00 | 0-0 | 0 | 0 | 0 | 0 | 0 | 0.0000 |
| 0- Waterman N/ 1- Stewart T/ 2- Robinson J/ 20- Johnson S/ 45- Traore F/ | 1 | 04:27 | 1 | 04:27 | 00:00 | 0-0 | 0 | 0 | 0 | 0 | 0 | 0.0000 |
| 0- Waterman N/ 1- Stewart T/ 2- Robinson J/ 20- Johnson S/ 50- Khalifa A/ | 1 | 04:27 | 1 | 02:52 | 01:35 | 0-6 | -6 | 1 | 0 | 0 | 0 | 0.0000 |
| 15- Saunders R/ 20- Johnson S/ 21- Knell T/ 30- Hall D/ 50- Khalifa A/ | 1 | 02:52 | 1 | 01:11 | 01:41 | 0-0 | 0 | 1 | 0 | 0 | 0 | 0.0000 |
| 1- Stewart T/ 2- Robinson J/ 15- Saunders R/ 20- Johnson S/ 45- Traore F/ | 1 | 01:11 | 2 | 20:00 | 01:11 | 3-2 | 1 | 0 | 1 | 0 | 1 | 3.0000 |
| 0- Waterman N/ 20- Johnson S/ 21- Knell T/ 30- Hall D/ 50- Khalifa A/ | 2 | 20:00 | 2 | 17:20 | 02:40 | 2-6 | -4 | 1 | 1 | 0 | 0 | 0.4098 |
| 0- Waterman N/ 2- Robinson J/ 20- Johnson S/ 21- Knell T/ 50- Khalifa A/ | 2 | 17:20 | 2 | 15:54 | 01:26 | 2-0 | 2 | 3 | 0 | 0 | 1 | 1.0000 |
| 0- Waterman N/ 2- Robinson J/ 15- Saunders R/ 21- Knell T/ 45- Traore F/ | 2 | 15:54 | 2 | 15:00 | 00:54 | 2-1 | 1 | 0 | 0 | 0 | 0 | 2.0000 |
| 0- Waterman N/ 2- Robinson J/ 15- Saunders R/ 20- Johnson S/ 45- Traore F/ | 2 | 15:00 | 2 | 10:35 | 04:25 | 13-9 | 4 | 3 | 1 | 2 | 2 | 1.4444 |
| 15- Saunders R/ 20- Johnson S/ 21- Knell T/ 30- Hall D/ 45- Traore F/ | 2 | 10:35 | 2 | 09:53 | 00:42 | 0-0 | 0 | 2 | 0 | 0 | 0 | 0.0000 |
| 2- Robinson J/ 15- Saunders R/ 21- Knell T/ 30- Hall D/ 50- Khalifa A/ | 2 | 09:53 | 2 | 08:03 | 01:50 | 2-0 | 2 | 2 | 0 | 0 | 0 | 0.6667 |
| 2- Robinson J/ 15- Saunders R/ 21- Knell T/ 30- Hall D/ 45- Traore F/ | 2 | 08:03 | 2 | 07:50 | 00:13 | 0-1 | -1 | 0 | 0 | 1 | 0 | 0.0000 |
| 0- Waterman N/ 2- Robinson J/ 21- Knell T/ 30- Hall D/ 45- Traore F/ | 2 | 07:50 | 2 | 04:50 | 03:00 | 7-6 | 1 | 3 | 1 | 0 | 1 | 1.8041 |
| 2- Robinson J/ 15- Saunders R/ 21- Knell T/ 30- Hall D/ 45- Traore F/ | 2 | 04:50 | 2 | 04:50 | 00:00 | 0-0 | 0 | 0 | 0 | 0 | 0 | 0.0000 |
| 2- Robinson J/ 15- Saunders R/ 20- Johnson S/ 30- Hall D/ 45- Traore F/ | 2 | 04:50 | 2 | 03:35 | 01:15 | 5-2 | 3 | 1 | 0 | 0 | 1 | 2.1552 |
| 0- Waterman N/ 2- Robinson J/ 20- Johnson S/ 30- Hall D/ 45- Traore F/ | 2 | 03:35 | 2 | 00:26 | 03:08 | 10-6 | 4 | 3 | 0 | 0 | 1 | 2.1552 |
| 0- Waterman N/ 2- Robinson J/ 15- Saunders R/ 20- Johnson S/ 45- Traore F/ | 2 | 00:26 | 2 | 00:23 | 00:02 | 1-0 | 1 | 1 | 0 | 0 | 0 | 2.2727 |
| 0- Waterman N/ 2- Robinson J/ 20- Johnson S/ 21- Knell T/ 45- Traore F/ | 2 | 00:23 | 2 | 00:18 | 00:05 | 1-2 | -1 | 0 | 0 | 0 | 0 | 2.2727 |
| 0- Waterman N/ 2- Robinson J/ 15- Saunders R/ 20- Johnson S/ 21- Knell T/ | 2 | 00:18 | 2 | 00:00 | 00:18 | 2-0 | 2 | 1 | 0 | 0 | 0 | 2.2727 |



Kansas

| Lineup | Quarter On | Time On | Quarter Off | Time Off | Time on Court | Score | Score Diff | Reb | Stl | Tov | Ass | PPP |
|---|------------|---------|-------------|----------|---------------|-------|------------|-----|-----|-----|-----|--------|
| 1- Dickinson H/3- Harris Jr. D/10- Furphy J/24- Adams, Jr. K/25-Timberlake N/ | 1 | 20:00 | 1 | 13:54 | 06:06 | 10-6 | 4 | 8 | 1 | 1 | 3 | 0.9294 |
| 10- Furphy J/11- McDowell J/13- Jackson E/23- Braun P/24- Adams, Jr. K/ | 1 | 13:54 | 1 | 11:32 | 02:22 | 6-7 | -1 | 0 | 1 | 0 | 2 | 1.5000 |
| 1- Dickinson H/3- Harris Jr. D/11- McDowell J/13- Jackson E/25-Timberlake N/ | 1 | 11:32 | 1 | 08:51 | 02:41 | 3-3 | 0 | 4 | 0 | 0 | 0 | 0.6000 |
| 1- Dickinson H/3- Harris Jr. D/10- Furphy J/24- Adams, Jr. K/25-Timberlake N/ | 1 | 08:51 | 1 | 08:16 | 00:35 | 2-1 | 1 | 0 | 0 | 0 | 0 | 2.0000 |
| 1- Dickinson H/3- Harris Jr. D/11- McDowell J/24- Adams, Jr. K/25-Timberlake N/ | 1 | 08:16 | 1 | 06:11 | 02:05 | 4-7 | -3 | 2 | 1 | 2 | 2 | 0.9009 |
| 3- Harris Jr. D/10- Furphy J/13- Jackson E/23- Braun P/24- Adams, Jr. K/ | 1 | 06:11 | 1 | 02:52 | 03:19 | 8-2 | 6 | 5 | 0 | 1 | 2 | 1.1628 |
| 1- Dickinson H/11- McDowell J/13- Jackson E/23- Braun P/25-Timberlake N/ | 1 | 02:52 | 1 | 01:11 | 01:41 | 0-0 | 0 | 2 | 0 | 1 | 0 | 0.0000 |
| 1- Dickinson H/3- Harris Jr. D/11- McDowell J/24- Adams, Jr. K/25-Timberlake N/ | 1 | 01:11 | 2 | 20:00 | 01:11 | 2-3 | -1 | 0 | 0 | 1 | 0 | 1.0000 |
| 1- Dickinson H/3- Harris Jr. D/10- Furphy J/24- Adams, Jr. K/25-Timberlake N/ | 2 | 20:00 | 2 | 13:36 | 06:24 | 10-11 | -1 | 6 | 1 | 2 | 2 | 0.8681 |
| 1- Dickinson H/10- Furphy J/11- McDowell J/13- Jackson E/24- Adams, Jr. K/ | 2 | 13:36 | 2 | 13:36 | 00:00 | 2-0 | 2 | 0 | 0 | 0 | 0 | 2.2727 |
| 10- Furphy J/11- McDowell J/13- Jackson E/23- Braun P/24- Adams, Jr. K/ | 2 | 13:36 | 2 | 12:09 | 01:27 | 0-5 | -5 | 1 | 1 | 2 | 0 | 0.0000 |
| 1- Dickinson H/3- Harris Jr. D/11- McDowell J/13- Jackson E/25-Timberlake N/ | 2 | 12:09 | 2 | 10:35 | 01:34 | 4-3 | 1 | 2 | 0 | 0 | 0 | 1.2048 |
| 1- Dickinson H/3- Harris Jr. D/10- Furphy J/24- Adams, Jr. K/25-Timberlake N/ | 2 | 10:35 | 2 | 08:34 | 02:01 | 0-0 | 0 | 4 | 0 | 0 | 0 | 0.0000 |
| 3- Harris Jr. D/10- Furphy J/23- Braun P/24- Adams, Jr. K/25- Timberlake N/ | 2 | 08:34 | 2 | 06:30 | 02:04 | 5-4 | 1 | 0 | 0 | 0 | 1 | 1.3298 |
| 1- Dickinson H/3- Harris Jr. D/10- Furphy J/24- Adams, Jr. K/25-Timberlake N/ | 2 | 06:30 | 2 | 00:23 | 06:06 | 10-21 | -11 | 6 | 0 | 1 | 2 | 0.9191 |
| 3- Harris Jr. D/10- Furphy J/13- Jackson E/24- Adams, Jr. K/25-Timberlake N/ | 2 | 00:23 | 2 | 00:18 | 00:05 | 2-1 | 1 | 0 | 0 | 0 | 0 | 2.2727 |
| 3- Harris Jr. D/10- Furphy J/11- McDowell J/13- Jackson E/24- Adams, Jr. K/ | 2 | 00:18 | 2 | 00:17 | 00:01 | 0-2 | -2 | 0 | 0 | 0 | 0 | 0.0000 |
| 3- Harris Jr. D/10- Furphy J/11- McDowell J/13- Jackson E/14- Cassidy P/ | 2 | 00:17 | 2 | 00:00 | 00:17 | 0-0 | 0 | 0 | 0 | 0 | 0 | 0.0000 |



BYU at Kansas

02/27/24 Allen Fieldhouse, Lawrence
2023-24 Men's Basketball

Game Time: 7:01 PM
Game Duration: 2:08
Attendance: 16,300

Officials: Gary Maxwell, Terry Oglesby, Jeb Hartness

BYU

| Lineup | Time | Score | Score Diff | Pts/Min | Reb | Stl | Tov | Ass | PPP |
|--|-------|-------|------------|---------|-----|-----|-----|-----|--------|
| 0- Waterman N/ 20- Johnson S/ 21- Knell T/ 30- Hall D/ 50- Khalifa A/ | 06:44 | 5-14 | -9 | 0.7426 | 4 | 1 | 0 | 0 | 0.4647 |
| 2- Robinson J/ 15- Saunders R/ 20- Johnson S/ 30- Hall D/ 45- Traore F/ | 04:47 | 13-6 | 7 | 2.7178 | 5 | 3 | 1 | 2 | 1.3948 |
| 0- Waterman N/ 2- Robinson J/ 15- Saunders R/ 20- Johnson S/ 45- Traore F/ | 04:27 | 14-9 | 5 | 3.1425 | 4 | 1 | 2 | 2 | 1.4831 |
| 0- Waterman N/ 2- Robinson J/ 21- Knell T/ 30- Hall D/ 45- Traore F/ | 03:35 | 7-6 | 1 | 1.9535 | 3 | 2 | 1 | 1 | 1.4344 |
| 0- Waterman N/ 2- Robinson J/ 20- Johnson S/ 30- Hall D/ 45- Traore F/ | 03:08 | 10-6 | 4 | 3.1763 | 3 | 0 | 0 | 1 | 2.1552 |
| 2- Robinson J/ 15- Saunders R/ 21- Knell T/ 30- Hall D/ 45- Traore F/ | 02:53 | 6-7 | -1 | 2.0809 | 3 | 0 | 2 | 1 | 1.0204 |
| 1- Stewart T/ 2- Robinson J/ 15- Saunders R/ 20- Johnson S/ 50- Khalifa A/ | 02:40 | 3-3 | 0 | 1.1250 | 4 | 0 | 0 | 1 | 0.6000 |
| 2- Robinson J/ 15- Saunders R/ 21- Knell T/ 30- Hall D/ 50- Khalifa A/ | 01:50 | 2-0 | 2 | 1.0909 | 2 | 0 | 0 | 0 | 0.6667 |
| 15- Saunders R/ 20- Johnson S/ 21- Knell T/ 30- Hall D/ 50- Khalifa A/ | 01:41 | 0-0 | 0 | 0.0000 | 1 | 0 | 0 | 0 | 0.0000 |
| 0- Waterman N/ 1- Stewart T/ 2- Robinson J/ 20- Johnson S/ 50- Khalifa A/ | 01:35 | 0-6 | -6 | 0.0000 | 1 | 0 | 0 | 0 | 0.0000 |
| 0- Waterman N/ 2- Robinson J/ 20- Johnson S/ 21- Knell T/ 50- Khalifa A/ | 01:26 | 2-0 | 2 | 1.3953 | 3 | 0 | 0 | 1 | 1.0000 |
| 1- Stewart T/ 2- Robinson J/ 15- Saunders R/ 20- Johnson S/ 45- Traore F/ | 01:11 | 3-2 | 1 | 2.5352 | 0 | 1 | 0 | 1 | 3.0000 |
| 1- Stewart T/ 2- Robinson J/ 15- Saunders R/ 21- Knell T/ 45- Traore F/ | 01:09 | 4-2 | 2 | 3.4783 | 1 | 0 | 1 | 1 | 1.6393 |
| 0- Waterman N/ 2- Robinson J/ 15- Saunders R/ 21- Knell T/ 45- Traore F/ | 00:54 | 2-1 | 1 | 2.2222 | 0 | 0 | 0 | 0 | 2.0000 |
| 0- Waterman N/ 2- Robinson J/ 21- Knell T/ 30- Hall D/ 50- Khalifa A/ | 00:52 | 2-4 | -2 | 2.3077 | 0 | 0 | 0 | 0 | 2.2727 |
| 15- Saunders R/ 20- Johnson S/ 21- Knell T/ 30- Hall D/ 45- Traore F/ | 00:42 | 0-0 | 0 | 0.0000 | 2 | 0 | 0 | 0 | 0.0000 |
| 0- Waterman N/ 2- Robinson J/ 15- Saunders R/ 20- Johnson S/ 21- Knell T/ | 00:18 | 2-0 | 2 | 6.4865 | 1 | 0 | 0 | 0 | 2.2727 |
| 0- Waterman N/ 2- Robinson J/ 20- Johnson S/ 21- Knell T/ 45- Traore F/ | 00:05 | 1-2 | -1 | 11.3208 | 0 | 0 | 0 | 0 | 2.2727 |
| 1- Stewart T/ 2- Robinson J/ 15- Saunders R/ 21- Knell T/ 50- Khalifa A/ | 00:01 | 0-0 | 0 | 0.0000 | 0 | 0 | 0 | 0 | 0.0000 |
| 0- Waterman N/ 1- Stewart T/ 2- Robinson J/ 20- Johnson S/ 45- Traore F/ | 00:00 | 0-0 | 0 | NaN | 0 | 0 | 0 | 0 | 0.0000 |



BYU at Kansas

02/27/24 Allen Fieldhouse, Lawrence
2023-24 Men's Basketball

Game Time: 7:01 PM
Game Duration: 2:08
Attendance: 16,300

Officials: Gary Maxwell, Terry Oglesby, Jeb Hartness

Kansas

| Lineup | Time | Score | Score Diff | Pts/Min | Reb | Stl | Tov | Ass | PPP |
|--|-------|-------|------------|---------|-----|-----|-----|-----|--------|
| 1- Dickinson H/ 3- Harris Jr. D/ 10- Furphy J/ 24- Adams, Jr. K/ 25- Timberlake N/ | 21:12 | 32-39 | -7 | 1.5092 | 24 | 2 | 4 | 7 | 0.8538 |
| 1- Dickinson H/ 3- Harris Jr. D/ 11- McDowell J/ 13- Jackson E/ 25- Timberlake N/ | 04:15 | 7-6 | 1 | 1.6471 | 6 | 0 | 0 | 0 | 0.8413 |
| 10- Furphy J/ 11- McDowell J/ 13- Jackson E/ 23- Braun P/ 24- Adams, Jr. K/ | 03:49 | 6-12 | -6 | 1.5721 | 1 | 2 | 2 | 2 | 0.8571 |
| 3- Harris Jr. D/ 10- Furphy J/ 13- Jackson E/ 23- Braun P/ 24- Adams, Jr. K/ | 03:19 | 8-2 | 6 | 2.4121 | 5 | 0 | 1 | 2 | 1.1628 |
| 1- Dickinson H/ 3- Harris Jr. D/ 11- McDowell J/ 24- Adams, Jr. K/ 25- Timberlake N/ | 03:16 | 6-10 | -4 | 1.8367 | 2 | 1 | 3 | 2 | 0.9317 |
| 3- Harris Jr. D/ 10- Furphy J/ 23- Braun P/ 24- Adams, Jr. K/ 25- Timberlake N/ | 02:04 | 5-4 | 1 | 2.4194 | 0 | 0 | 0 | 1 | 1.3298 |
| 1- Dickinson H/ 11- McDowell J/ 13- Jackson E/ 23- Braun P/ 25- Timberlake N/ | 01:41 | 0-0 | 0 | 0.0000 | 2 | 0 | 1 | 0 | 0.0000 |
| 3- Harris Jr. D/ 10- Furphy J/ 11- McDowell J/ 13- Jackson E/ 14- Cassidy P/ | 00:17 | 0-0 | 0 | 0.0000 | 0 | 0 | 0 | 0 | 0.0000 |
| 3- Harris Jr. D/ 10- Furphy J/ 13- Jackson E/ 24- Adams, Jr. K/ 25- Timberlake N/ | 00:05 | 2-1 | 1 | 22.6415 | 0 | 0 | 0 | 0 | 2.2727 |
| 3- Harris Jr. D/ 10- Furphy J/ 11- McDowell J/ 13- Jackson E/ 24- Adams, Jr. K/ | 00:01 | 0-2 | -2 | 0.0000 | 0 | 0 | 0 | 0 | 0.0000 |
| 1- Dickinson H/ 10- Furphy J/ 11- McDowell J/ 13- Jackson E/ 24- Adams, Jr. K/ | 00:00 | 2-0 | 2 | ∞ | 0 | 0 | 0 | 0 | 2.2727 |