

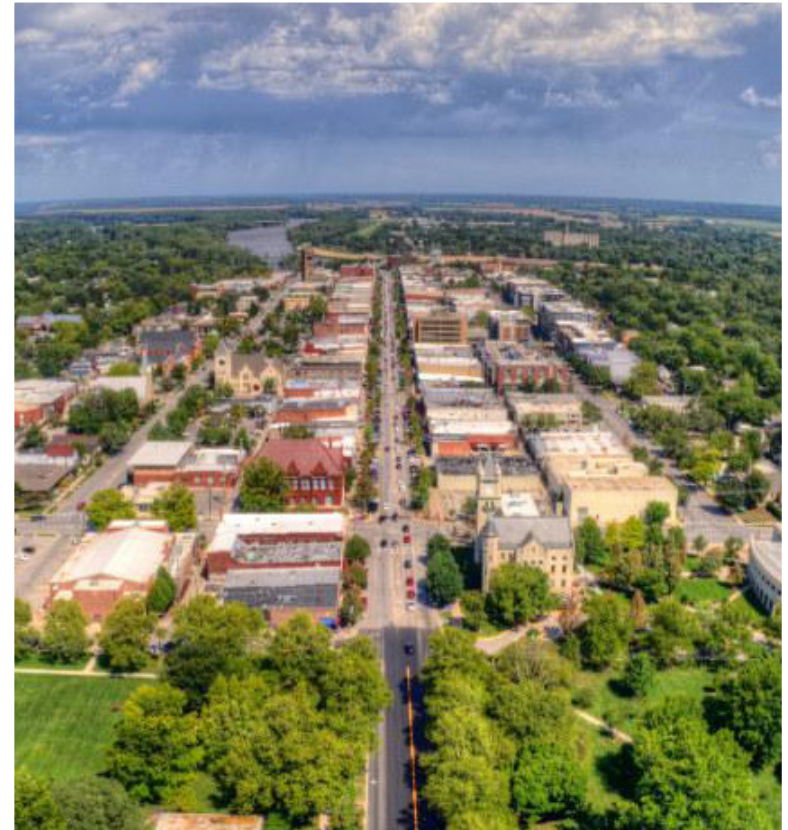
GET IN THE KNOW ABOUT

KU WOMEN'S

G  **L F**

THE WEATHER IN LAWRENCE, KS

- Lawrence sits at just above 866 feet in elevation
- Although it does snow in Lawrence, it typically only snows 13 inches in a year and the average monthly totals of 4 inches come in the off-season and start to our season (December-February)
- March through May the weather is perfect for playing and practicing (average high of 65 degrees)
- KU is on winter break from December 18th-January 18th and the team typically travels to Arizona before the start of the spring season for a practice training trip



THINGS TO DO IN LAWRENCE

Lawrence, a progressive city of about 100,000 in northeast Kansas, consistently rates as a Top 10 town for its college life, sports, arts, and live music scene.

Attractions

- Massachusetts St. for dining and shopping (downtown Lawrence)
- Rock Chalk Park for sports training
- DeBruce Center (next to Allen Fieldhouse) that hosts the “Rules of Basketball”
- Hobbs Memorial Park, Watkins Museum of History, and Grinter “Sunflower” Farms



ATHLETICS & RECREATION

- The University of Kansas officially sponsors 18 sports: 7 men's and 11 women's.
- Men's sports: basketball, golf, baseball, cross country, football and track field (indoor and outdoor)
- Women's sports: basketball, rowing, softball, cross country, track and field (indoor and outdoor), golf, soccer, swimming and diving, tennis and volleyball.
- The Jayhawks have won total of 170 conference titles all-time, 24 championships since joining the Big 12. Note that approximately 1/3 of those are from the men's basketball program.
- 14 National Championships (6 men's basketball, 1 men's XC, men's indoor track and field, 3 men's outdoor track and field, 1 women's track and field)



NOTABLE FORMER STUDENT-ATHLETES

Phog Allen



- Ochai Agabji
- Phog Allen
- Christian Braun
- Wilt Chamberlain
- Joel Embiid
- Clyde Lovellette
- Danny Manning
- Dean Smith
- Marilyn Smith
- Lynette Woodard
- Gary Woodland
- Paul Pierce
- Rob Thomson

Gary Woodland



Joel Embiid



Christian Braun



NOTABLE FORMER KANSAS GOLFERS

Marilynn Smith

One of the 13 Founders of the LPGA

Professional Golfer

Tour Champion



Yupaporn Kawinpakorn

2016 WGCA All-American Honorable Mention

Won 5 events senior year

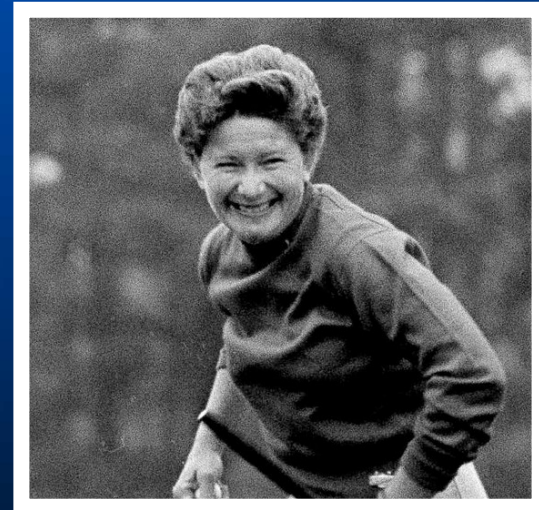
Averaged 71.2 stroke average senior year

3 Time All-Big 12 selection



JAYHAWKS PAST SUCCESS

- Marilyn Smith was one of the original 13 founders of the Ladies Professional Golf Association (LPGA) in 1950 and is a charter member of the organization.
- A three-time President of the LPGA, Smith's influential career as a professional golfer and leader helped pave the way for future women amateurs.
- Smith won 22 times on the LPGA tour, including the 1963 Titleholders, one of the major women's events at the time, in an 18-hole playoff win over Mickey Wright.
- Her two-year career at KU was highlighted by a 1949 National Collegiate Individual title.
- From 1954-72, she won at least one tour event in 14 of 19 years, winning the Titleholders Championship in 1963 and 1964.
- Golf Digest presented her the LPGA Founders Cup for charitable service off the course in 1983.
- She was selected as one of the Distinguished Champions of the Vincent T. Lombardi Tournament in 1987.



UNIVERSITY OF KANSAS ACADEMICS

- KU has an undergraduate population of just under 19,135 students and the student to faculty ratio is 17:1
- 46.7% of classes have fewer than 20 students (2019)
- 200+ Undergraduate fields of study including Sport Management
- WGCA All-American Scholars (55) - 3.5 GPA or higher and competed in 50% or more of regular scheduled tournaments throughout the year
- Most recent: Amy DeKock, Johanna Ebner, Hanna Hawks, Lily Hirst and Jordan Rothman



UNIVERSITY OF KANSAS

- Public University
- Enrollment (2023-24)
29,355
- Campus Setting
Tree shaded 1,000 acre campus

10 minute drive to downtown Lawrence

We embrace our role as the state's flagship university and a premier research institution, serving the state, nation, and world. We celebrate the energy and compassion that infuse the Jayhawk spirit. And we remain true to our historic values: the elevating force of education, the transformative power of research, and the healing power of service.



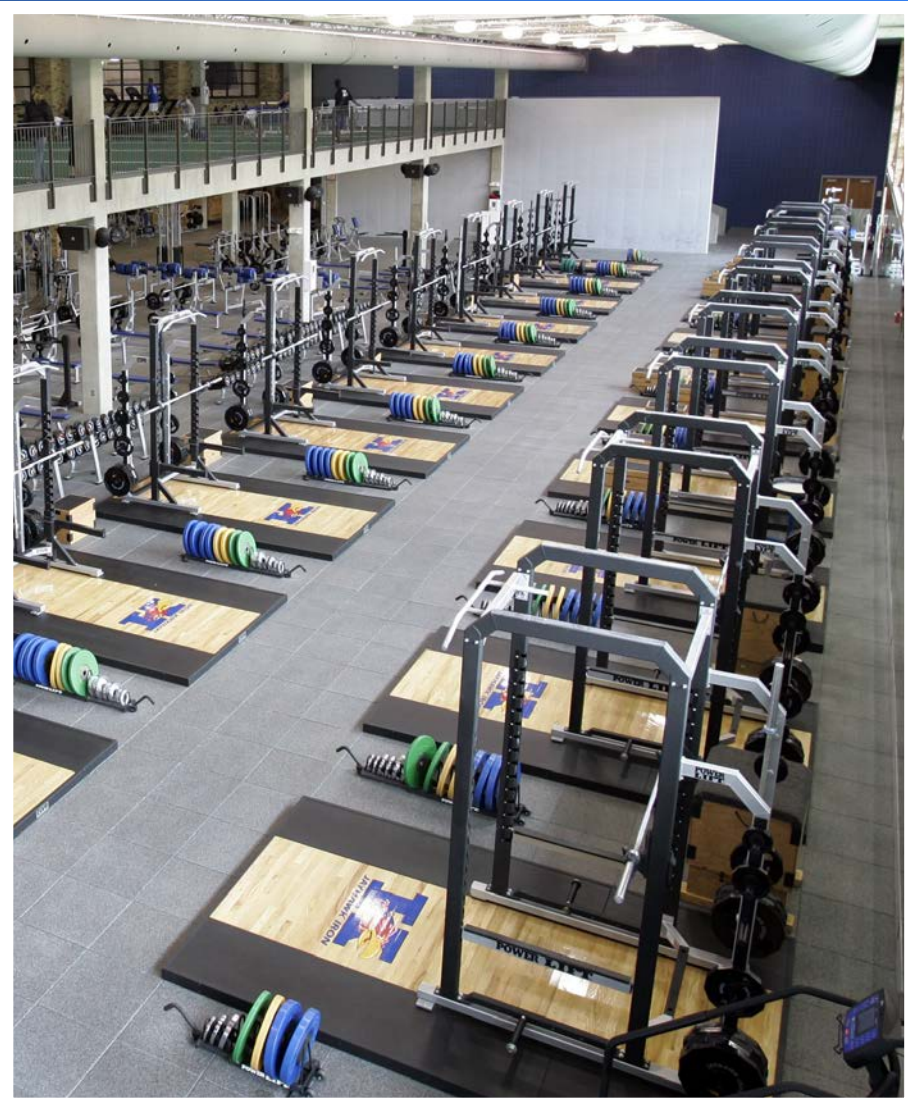


QUALITY OF EDUCATION

- A KU degree gives you the edge you need to make a difference in the world. You will receive a world class education.
- Degree programs
The University of Kansas offers more than 200 undergraduate programs (business, engineering, international studies, psychology and many more)
- University of Kansas' ranking in the 2023 edition of Best Colleges among National Universities is #121
- KU School of Business is ranked #41 amongst all public universities. Located in the Capital Federal Hall which is newly built in 2016!



KU ATHLETICS RESOURCES



Strength and Conditioning

At Kansas we use top notch technology to track each athletes athletic performance progress and help minimize injuries

- Sparta Force Plate System
- EliteForm
- DexaScans

Workouts are individualized and always supervised by a strength coach.



KU ATHLETICS RESOURCES

TrackMan and Foresight Sports Launch Monitor

- The Kansas Women's golf program uses a Foresight Sports Launch Monitor for team travel
- All athletes on team on team use Rapsodo Launch Monitor.
- We also have two Trackmans available to use at our facility including an indoor simulator
- Access to Boditrak Force plate system in our indoor teaching bay

Sports Psychology

- Vision 54 training, individual sessions, and work on mental skills throughout the season
- Full time counselor available on staff

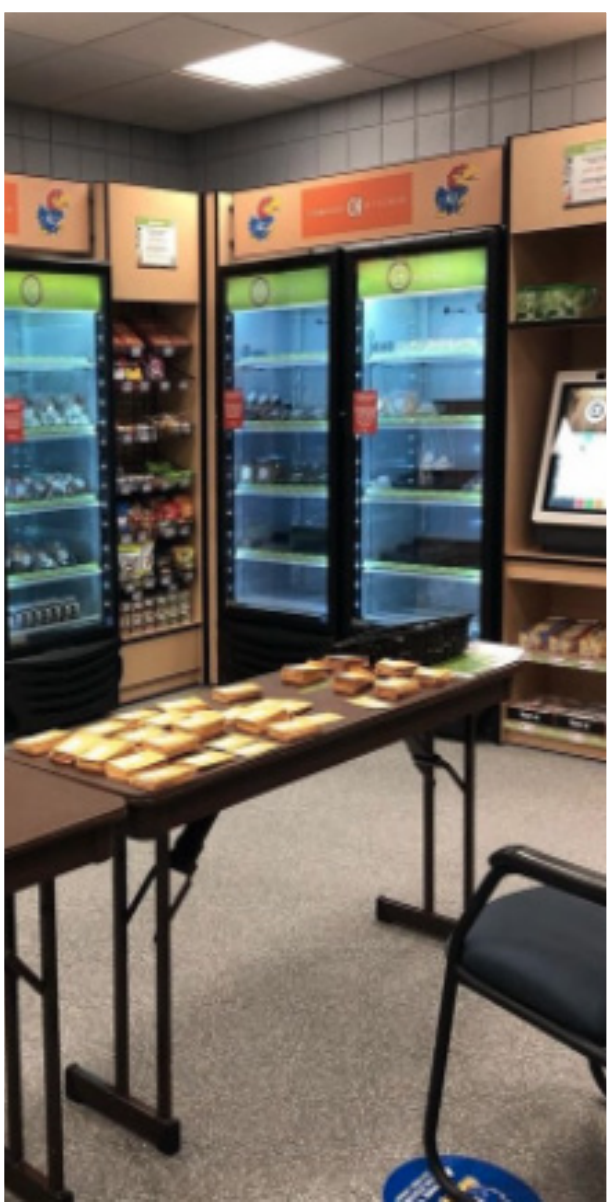


KU ATHLETICS RESOURCES

Red Card

A flexible athlete fueling platform for all student athletes. \$26.50 a day for food

- A meal card incidental with student-athlete participation
- Access to over 10 off campus restaurants around Lawrence
- HyVee Grocery Store was just added to the red card, so you can purchase supplies to cook a meal at home
- Have access to dietician suggestions for all restaurants available on the red card on your app



STOUFFER PLACE APARTMENTS

At Stouffer Apartments Student-athletes have options of 2-bedroom or 4-bedroom apartments. In each apartment student-athletes have their own bedroom and bathroom, and share a living room, full kitchen, and washer-dryer within the apartment.



KU LEADS

- The University of Kansas has a well-established history and tradition of excellence and KU LEADS embodies the pursuit of excellence as the Kansas Athletics student-athlete development unit
- KU Leads' framework focuses on leadership training, community building opportunities, and professional development to enhance the student-athlete experience.
- Their goal is to support current student-athletes, connect past and present student-athletes, and educate student-athletes on the skills necessary to succeed at the University of Kansas and throughout their lives.

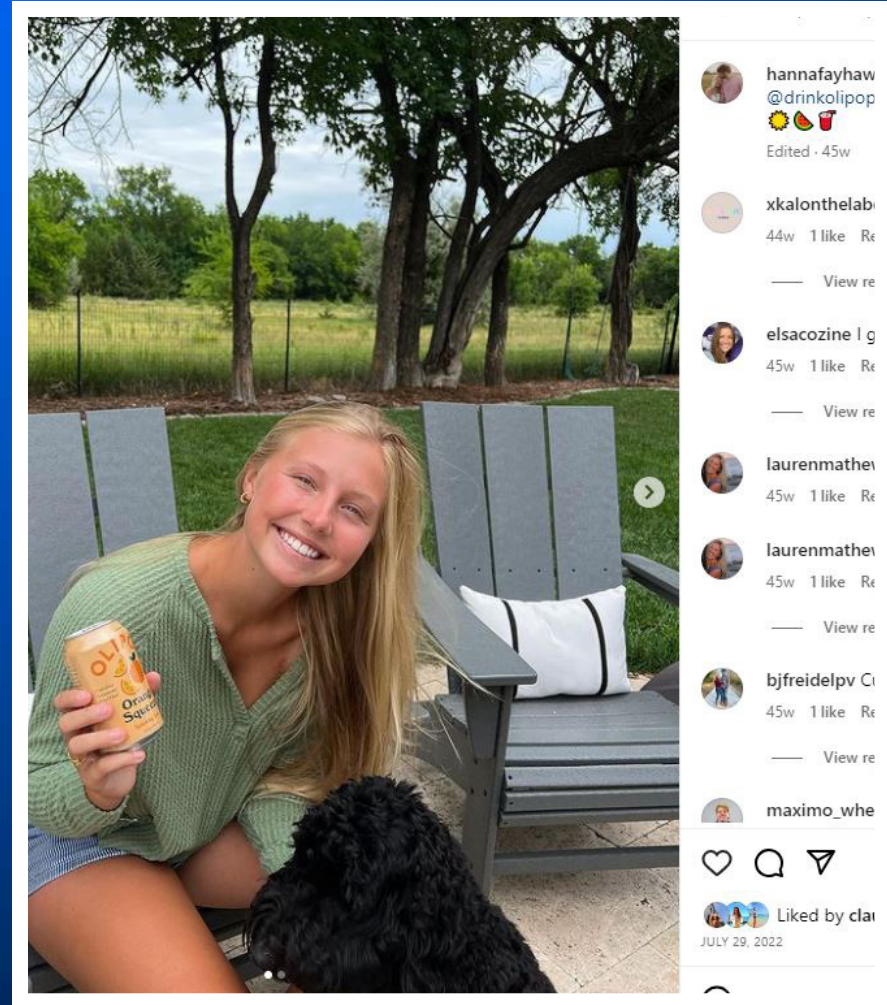
ROCK CHALK CHOICE AWARDS

- Every year we celebrate our student-athlete's accomplishments from the previous academic year with the Rock Chalk Choice Awards. The event includes a red carpet, guest speakers and plenty of awards given out!
- The team also earned a department-high 3.88 GPA for the Fall 2023 semester.



NAME, IMAGE AND LIKENESS (NIL)

- Starting July 1, 2021, the NCAA approved policy which allows student-athletes to be compensated for their name, image, and likeness.
- In response, Kansas Athletics launched Jayhawks Ascend –KU’s all encompassing NIL program.
- Partnerships in place with Altius Sports Partners, Opendorse and INFLCR.
- Launched Kansas NIL Marketplace, via Opendorse.
- Hired two full-time Directors of NIL on staff.
- Kansas Athletics hosts events and continued education sessions with student athletes on NIL compliance, brand building, content creation, financial literacy & more.



ADIDAS EQUIPMENT

Kansas owns one of the largest apparel deals in college athletics, a 14 year, \$196 million agreement that extends to 2031 and keeps alive a partnership with Adidas that first formed in 2005.

KU Athletes receive all equipment necessary to compete, practice, workout, and travel in style.



PLAYER DEVELOPMENT



LAUREN CLARK

74.3 → 73.1
1.2 STROKE AVERAGE IMPROVEMENT
IN 2 SEASONS



JOHANNA EBNER

77.6 → 74.3
3.3 STROKE AVERAGE IMPROVEMENT
IN 3 SEASONS



HANNA HAWKS

78.0 → 73.9
4.1 STROKE AVERAGE IMPROVEMENT
IN 4 SEASONS



JORDAN ROTHMAN

75.9 → 72.3
3.6 STROKE AVERAGE IMPROVEMENT
IN 3 SEASONS



LILY HIRST

74.0 → 72.3
1.7 STROKE AVERAGE IMPROVEMENT
IN 1 SEASON



AMY DEKOCK

82.8 → 72.6
10.2 STROKE AVERAGE IMPROVEMENT
IN 1 SEASON



32 YEARS OF COACHING



COACH KUHLE



COACH BIDNE

WAC AND
SUMMIT
LEAGUE
COACH OF
THE YEAR

7 FORMER PLAYERS
COACHING AND
2 FORMER ASSISTANTS
COACHING IN
POWER FIVE SCHOOLS

20TH YEAR
OF COACHING

11 PLAYERS FROM
DENVER AND
2 FROM KU
THAT TURNED PRO

12TH YEAR
OF COACHING

BIG WEST
COACH OF
THE YEAR



HEAD COACH LINDSAY KUHLE



Played collegiate golf at Tulane University

- All conference performer all four years
- Named Tulane Female Scholar-Athlete of the Year in 2005
- While in college qualified for three consecutive U.S. Women's Amateur Championships (2002-2004)
- Finished as the low amateur in the 2004 Colorado Women's Open
- While at Tulane Coach Kuhle recorded 14 top-10 finishes and a tournament win in 2002



HEAD COACH LINDSAY KUHLE

12 Years DI - Head Coaching Experience

Named head coach at the University of Kansas in 2021 after eight seasons at Denver as head coach

- Led KU to 3rd ever NCAA Regional selection in back-to-back years
- Commanded the lowest stroke average in program history (2024)
- Improved KU's ranking to 48th, its second-highest ranking all-time (2024)

Assistant coach at the University of Georgia (2012-2013)

While at Denver (2013-2021)

- Helped Pioneers to seven conference championships
- Eight straight NCAA Regional Appearances
- Helped the Pioneers finish ranked 39th in the country in the 2020-2021 season
- Coached players Anna Zanusso to a ninth place finish at the NCAA National Championship (2021) and Tonje Daffinrud to 10th in 2014



ASSOCIATE HEAD COACH - STEPHEN BIDNE

10 Years DI - Head Coaching Experience

University of Northern Colorado (2013-2017)

University of Hawaii (2017-2022)

- 2017 Big West Conference Coach of the Year
- 2022 Big West Conference Team Champions
- Six Team Wins, Six Individual Wins
- Winningest Coach in UH program history

University of Kansas (2022-Present)

- Led KU to their second consecutive and third NCAA Regional appearance all-time

Played collegiately at the University of Northern Colorado

- 2008 America Sky Conf. Newcomer of the Year
- 2010 America Sky Conf. Player of the Year
- Two Collegiate Individual Wins

Competed on PGA Tour Canada and various mini tours post college. Won 5 times, and had 13 other top-3 finishes.

CERTIFICATIONS

- PGA CLASS A MEMBER



KANSAS 2023-24 TEAM NOTABLES

- Back-to-back NCAA Regional at-large selections for first time in program history.
- Broke the team 18, 36 and 54-hole program records.
 - *18-hole (-19, Wisconsin Westbrook Inv and -14, UNM)
 - *36-hole (-30, Wisconsin Westbrook Inv.)
 - *54-hole (-43, Wisconsin Westbrook Inv. and -14, Denver Ron Moore Intercollegiate)
- Won the Wisconsin Westbrook Invitational with a score of -43 for the program's first team title since the Chip-N-Club Invitational in 2017.
- Finished seventh at the 2024 Big 12 Championship with a score of 876 (+24), the lowest 54-hole total in program history at the conference championship.
- Carried a 288.25 scoring average in the fall, which is the lowest fall season team stroke average in program history.
- Finished with a 289.3 stroke average on the season, which is the lowest in program history (previously set with a 295.4 average), a 6.1 stroke improvement from the previous best in program history, set last year.
- Finished in 6th place at the NCAA Cle Elum Regional, which was the second highest finish in program history and three spots higher than their seed (#9), which was two places higher than the previous year.
- Ranked 48th in final Spikemark standings, a three-spot improvement from last year.
- Posted a 3.88 Team GPA for the fall semester, setting a new program record and leading all KU Athletics teams for the semester. In the spring semester, the team earned a 3.78 GPA. Kansas finished with a 3.83 GPA on the year, which was also a new program record.
- The team set a program record with 6 players being named to the WGCA Academic-All Scholar team.



SEASON SCORING AVERAGE

289.3



NEW PROGRAM RECORD

KANSAS WOMEN'S GOLF



2ND CONSECUTIVE NCAA TOURNAMENT APPEARANCE

*FIRST TIME IN PROGRAM HISTORY





Jordan Rothman
**CO-BIG 12 GOLFER
OF THE MONTH**



UNM DICK MCGUIRE INVITATIONAL

KANSAS WOMEN'S GOLF
FRESHMAN
RECORD

67 (-5)



LYLA LOUDERBAUGH



WESTBROOK INVITATIONAL

18 HOLE RECORD



(-19)

KANSAS WOMEN'S GOLF





WEBSTERBROOK INVITATIONAL

36 HOLE RECORD



[-30]

KANSAS WOMEN'S GOLF





WESTBROOK INVITATIONAL

54 HOLE *Team Win* RECORD



(-43)

KANSAS WOMEN'S GOLF

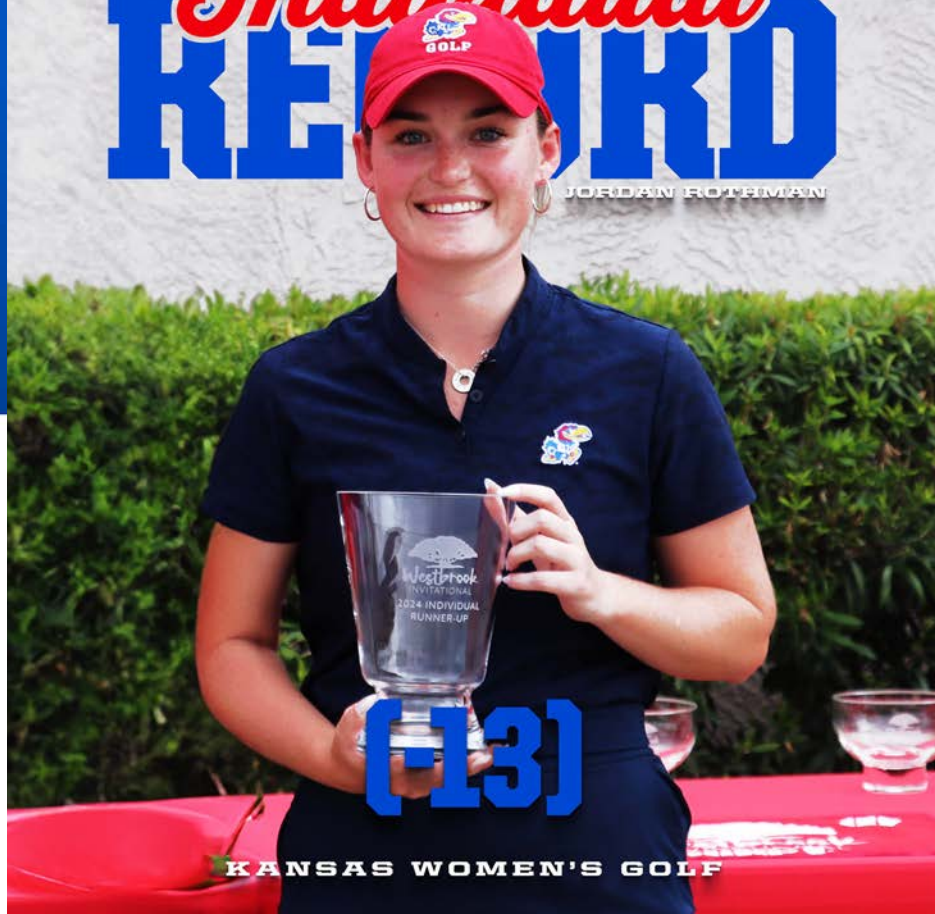




WESTBROOK INVITATIONAL

54 HOLE *Individual* REWARD

JORDAN ROTHMAN



(-13)

KANSAS WOMEN'S GOLF



ON-SITE MENTAL HEALTH DOCTORS



Jason Kraman
LSCSW

**Student-Athlete Mental
Health Clinician**



Kristie Baumchen
LSCSW, LCAC

**Director of Mental
Health Services**



Dr. Emily Tyler

**Executive Director of
Mental Health Services**

TEAM NUTRITION



GOLF COURSE FACILITIES



THE JAYHAWK CLUB

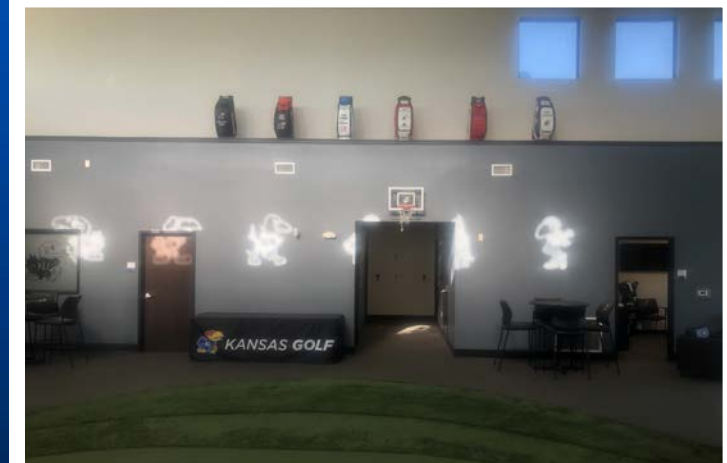
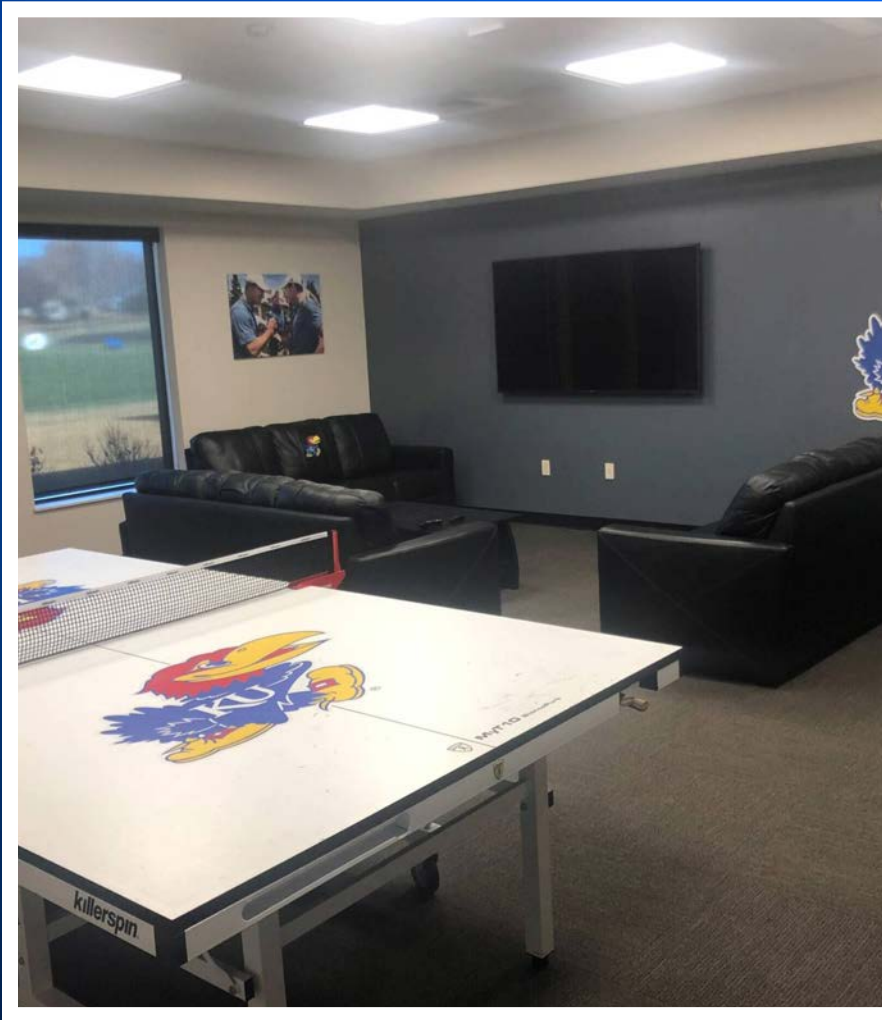
KANSAS PRACTICE FACILITY

Opened in 2018, the Kansas Golf Practice Facility is a state-of-the-art complex that provides the Jayhawks with the necessary tools to train year-round. The 30-acre complex surrounds the driving range at the Jayhawk Club. For on-course performance, the facility includes a large indoor short game area, seven hitting bays and a trackman simulator. Additionally, the private clubhouse for the men's and women's program also includes team-specific lounges, locker rooms and coaches offices.



THE JAYHAWK CLUB

KANSAS PRACTICE FACILITY



THE JAYHAWK CLUB

KANSAS PRACTICE FACILITY



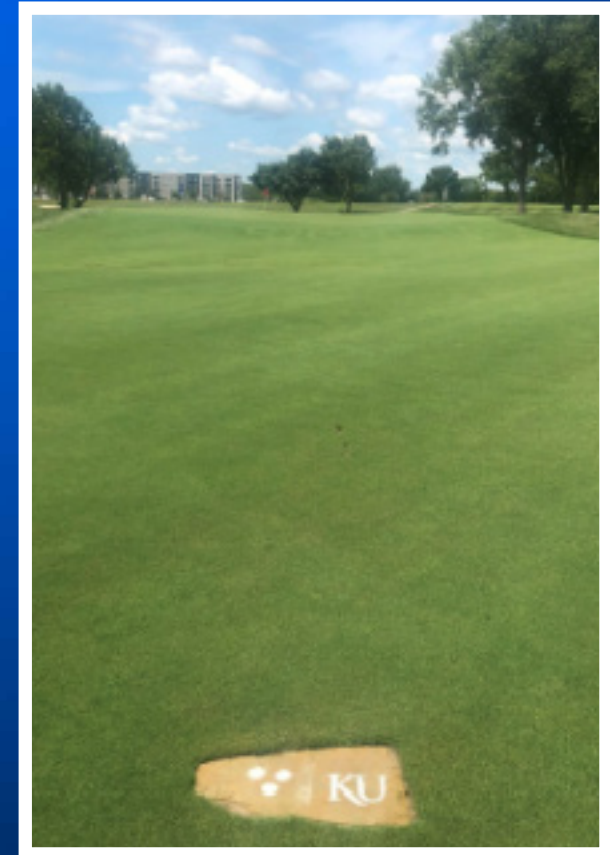
THE JAYHAWK CLUB

KANSAS PRACTICE FACILITY



THE JAYHAWK CLUB - THE BABY JAY SHORT COURSE

The outdoor practice complex includes zoysia, bent and artificial turf teeing areas, allowing players to practice for upcoming tournaments from different wind directions and grasses. There are four greens including a large private putting green and The Baby Jay. The Baby Jay is an 18-hole short course played throughout three large short game areas. The “tees” stay the same every day, yet the hole locations change. The Baby Jay enables players to see a wide variety of shots and post a competitive score every day.



LAWRENCE COUNTRY CLUB

The Lawrence Country Club golf course was completely renovated and re-opened for play in September, 2006. The course was nominated by Golf Digest as one of the top five renovated country club courses in the Midwest Region. All 18 holes were redesigned and sculptured to create a magnificent and challenging course for all levels of play. LCC is one of only two country clubs in the state of Kansas with bent grass tee boxes, fairways, and greens. LCC hosted the Women's Big 12 Golf Championship in 2012.



IT'S A GREAT DAY TO BE A JAYHAWK!

